

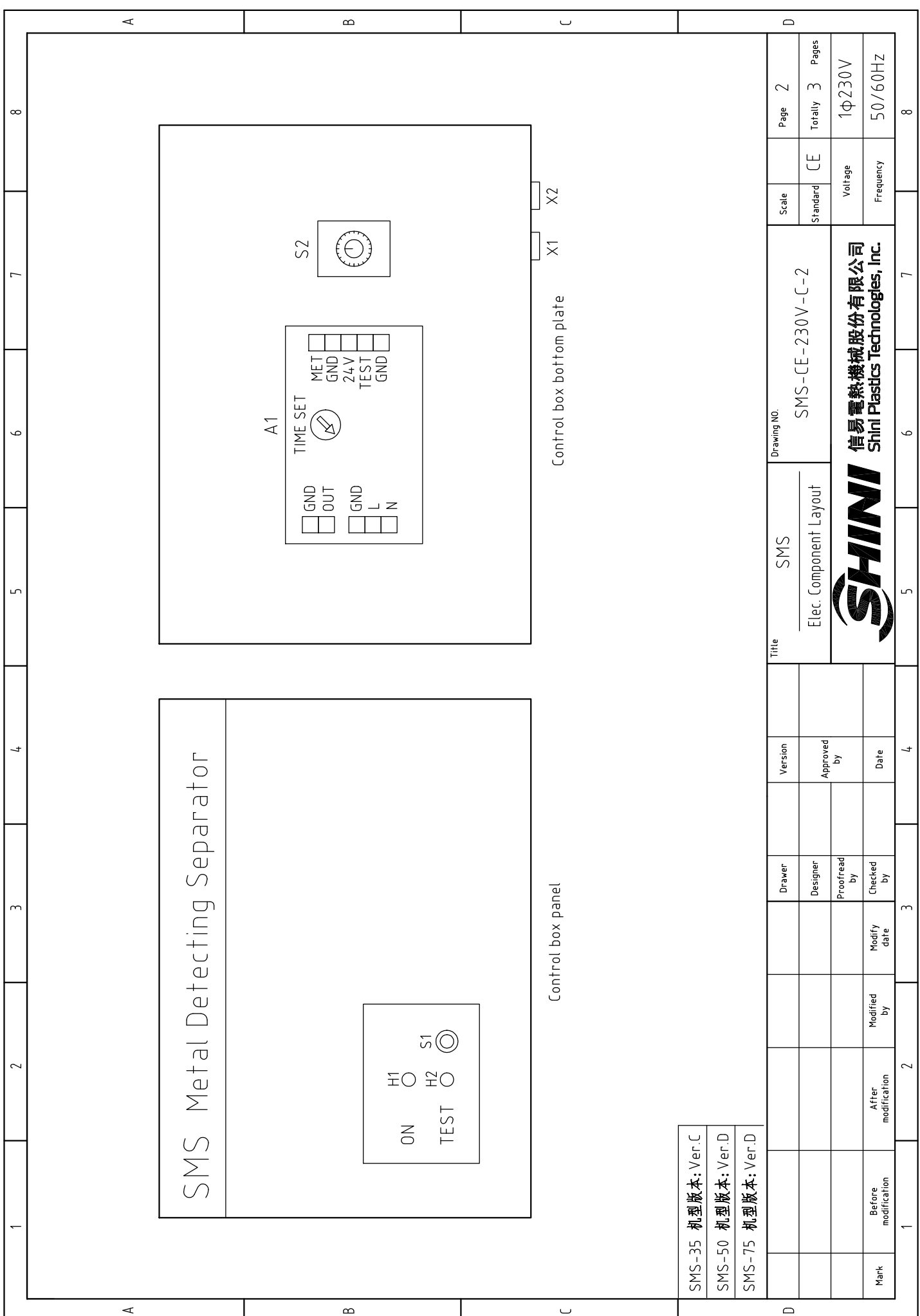
A1
(SMS-01)

- POWER IN 1/PE/100~240V 50/60HZ
- Solenoid Valve
- Separate Indicator Light (Red)
- Testing Press-Button
- Metal Separation Coil
- Sensitivity Adjustment Knob
- Power Supply Indicator Light (Green)

SMS-35	机型版本: Ver.C
SMS-50	机型版本: Ver.D
SMS-75	机型版本: Ver.D


Mark	Before modification	Modified by	Modify date	Checked by	Proofread by	Designer	Drawer	Version	Title SMS Main Circuit Diagram	Drawing NO. SMS-CE-230V-C-1	Scale	Page 1
	After modification	Modified by	Modify date	Checked by	Proofread by	Designer	Drawer	Version			Standard CE	Totally 3
											Voltage	1φ230V
											Frequency	50/60HZ
											8	

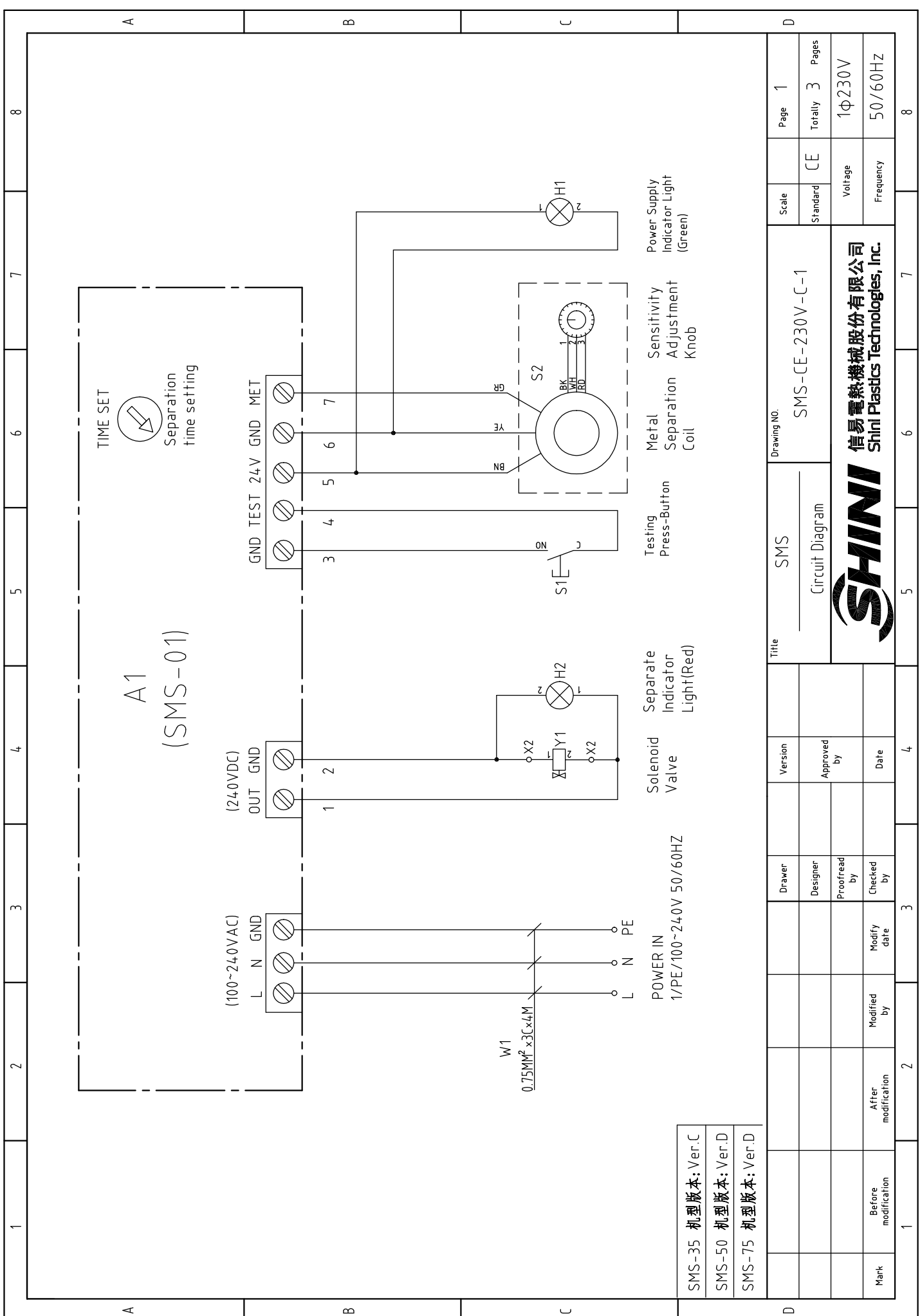




SMS-35 机型版本: Ver.C
 SMS-50 机型版本: Ver.D
 SMS-75 机型版本: Ver.D

Mark	Before modification	Modified by	Modify date	Checked by	Proofread by	Designer	Drawer	Version	Title SMS Elec. Component Layout	Drawing NO. SMS-CE-230V-C-2	Scale	Page 2
	After modification	Modified by	Modify date	Checked by	Proofread by	Designer	Drawer	Standard			CE	Totally 3
											Voltage	1φ230V
											Frequency	50/60HZ
											 信易電熱機械股份有限公司 Shini Plastics Technologies, Inc.	

1		2		3		4		5		6		7		8																															
NO.	Symbol	Name	Manufacturer	Type	Specification	Number	Material number	Remark																																					
1	A1	Metal separating detector controller	DEMAK	SMS-01	100~240VAC 50/60HZ	1	YE80102400000																																						
2	H1	Metal indicator	----	GR	24VDC	1	YE83002400200																																						
3	H2	Metal indicator	----	RD	24VDC	1	YE83002400000																																						
4	S1	Testing press-button	----	GR	24VDC	1	YE83001201000																																						
5	S2	Metal separation coil	DEMAK	35/50/75mm(with sensitivity adjusting knob)	24VDC	1	----	(1)																																					
6	W1	CE power cable	----	H05VV-F	0.75mm×3C	1	YE62050300000	(1) CE cable																																					
7		International power cable	----	MG-802/3P/10A/250	0.75mm×3C	1	YE51802340000	(1) GB cable																																					
A																																													
B																																													
C																																													
D																																													
SMS-35 机型版本: Ver.C SMS-50 机型版本: Ver.D SMS-75 机型版本: Ver.D Notes: (1) Materials not in the control box;																																													
<table border="1"> <tr> <td colspan="2">Title</td> <td colspan="2">Drawing NO.</td> <td colspan="2">Page</td> </tr> <tr> <td colspan="2">SMS</td> <td colspan="2">SMS-CE-230V-C-3</td> <td colspan="2">3</td> </tr> <tr> <td colspan="2">Elec. Parts List 1</td> <td colspan="2">Standard</td> <td colspan="2">CE</td> </tr> <tr> <td colspan="2">Voltage</td> <td colspan="2">Frequency</td> <td colspan="2">1φ230V</td> </tr> <tr> <td colspan="2">50/60HZ</td> <td colspan="2"></td> <td colspan="2">50/60HZ</td> </tr> </table>																Title		Drawing NO.		Page		SMS		SMS-CE-230V-C-3		3		Elec. Parts List 1		Standard		CE		Voltage		Frequency		1φ230V		50/60HZ				50/60HZ	
Title		Drawing NO.		Page																																									
SMS		SMS-CE-230V-C-3		3																																									
Elec. Parts List 1		Standard		CE																																									
Voltage		Frequency		1φ230V																																									
50/60HZ				50/60HZ																																									
 <p>信易電熱機械股份有限公司 Shini Plastics Technologies, Inc.</p>																																													
<table border="1"> <tr> <td>Version</td> <td>Approved by</td> <td>Date</td> </tr> <tr> <td></td> <td></td> <td></td> </tr> <tr> <td>Drawer</td> <td>Designer</td> <td>Proofread by</td> </tr> <tr> <td></td> <td></td> <td></td> </tr> <tr> <td>Checked by</td> <td>Modify date</td> <td>Modified by</td> </tr> <tr> <td></td> <td></td> <td></td> </tr> <tr> <td>Before modification</td> <td>After modification</td> <td></td> </tr> <tr> <td></td> <td></td> <td></td> </tr> </table>																Version	Approved by	Date				Drawer	Designer	Proofread by				Checked by	Modify date	Modified by				Before modification	After modification										
Version	Approved by	Date																																											
Drawer	Designer	Proofread by																																											
Checked by	Modify date	Modified by																																											
Before modification	After modification																																												
1 2 3 4 5 6 7 8																																													

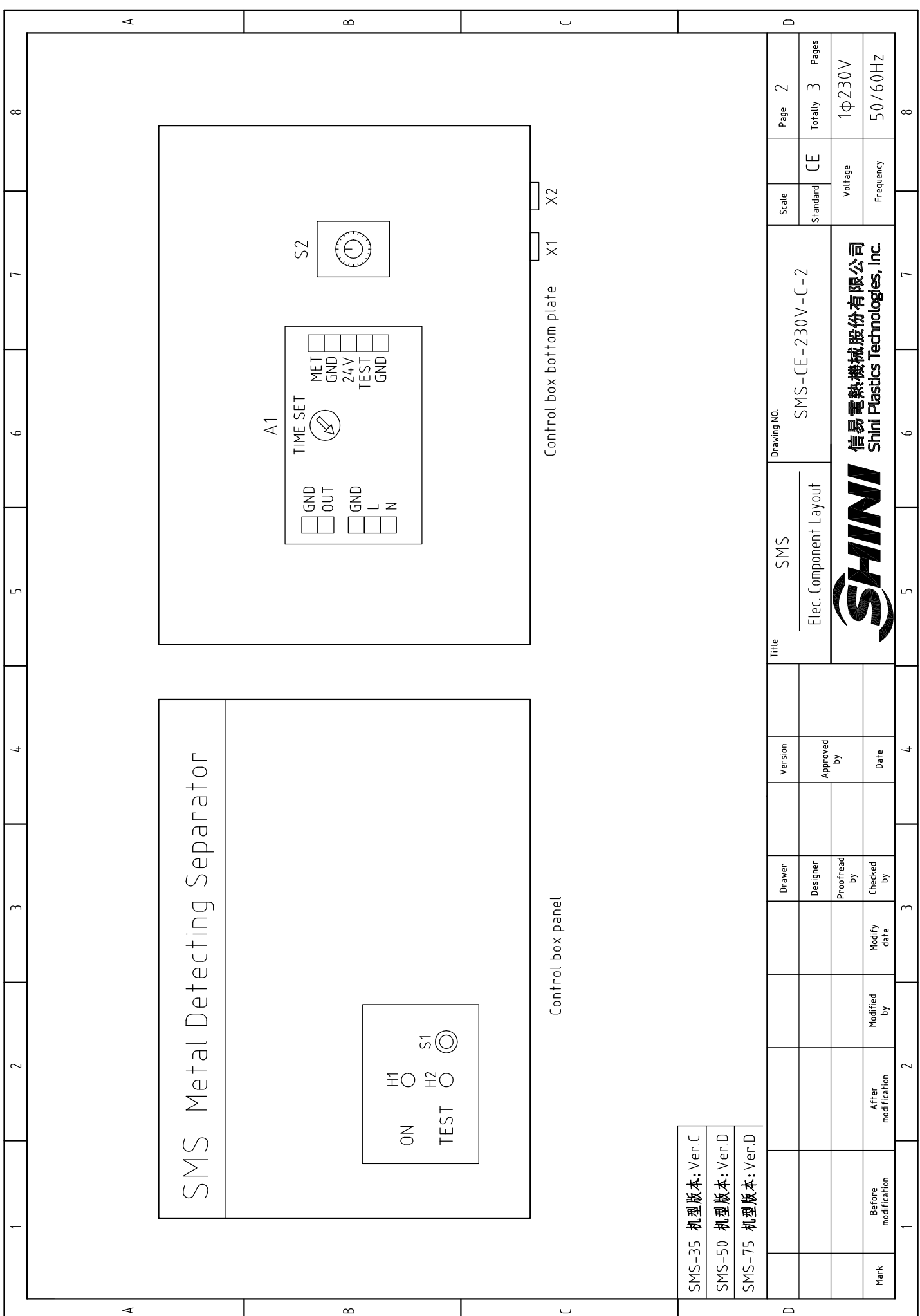


A1
(SMS-01)

- SMS-35 机型版本: Ver.C
- SMS-50 机型版本: Ver.D
- SMS-75 机型版本: Ver.D

Mark	Before modification	Modified by	Modify date	Version	Approved by	Date	Title	Drawing NO.	Scale	Page 1
	After modification	Checked by	Modified by						Standard	Totally 3
								SMS-CE-230V-C-1		Pages
								Voltage		1φ230V
								Frequency		50/60HZ





SMS-35 机型版本: Ver.C
 SMS-50 机型版本: Ver.D
 SMS-75 机型版本: Ver.D

Mark	Before modification	Modified by	Modify date	Checked by	Proofread by	Designer	Drawer	Version	Title SMS Elec. Component Layout	Drawing NO. SMS-CE-230V-C-2	Scale	Page 2
	After modification	Modified by	Modify date	Checked by	Proofread by	Designer	Drawer	Standard CE			Totally 3 Pages	Voltage 1φ230V
										Frequency 50/60HZ	8	



1	2		3	4	5	6	7	8
NO.	Symbol	Name	Manufacturer	Type	Specification	Number	Material number	Remark
1	A1	Metal separating detector controller	DEMAK	SMS-01	100~240VAC 50/60HZ	1	YE80102400000	
2	H1	Metal indicator	----	GR	24VDC	1	YE83002400200	
3	H2	Metal indicator	----	RD	24VDC	1	YE83002400000	
4	S1	Testing press-button	----	GR	24VDC	1	YE83001201000	
5	S2	Metal separation coil	DEMAK	35/50/75mm(with sensitivity adjusting knob)	24VDC	1	----	(1)
6	W1	CE power cable	----	H05VV-F	0.75mmx3C	1	YE62050300000	(1)CE cable
7		International power cable	----	MG-802/3P/10A/250	0.75mmx3C	1	YE51802340000	(1)GB cable
A								
B								
C								
D								
SMS-35 机型版本: Ver.C			SMS-50 机型版本: Ver.D		SMS-75 机型版本: Ver.D		Notes: (1) Materials not in the control box;	
Drawer			Version		Title		Drawing NO.	
Designer			Approved by		Elec. Parts List 1		SMS-CE-230V-C-3	
Proofread by			Date		Scale		Page 3	
Checked by			Modify date		Standard		Totally 3 Pages	
Modified by			After modification		Voltage		1φ230V	
Before modification			1		Frequency		50/60HZ	
2			3		4		5	
7			8		9		10	

