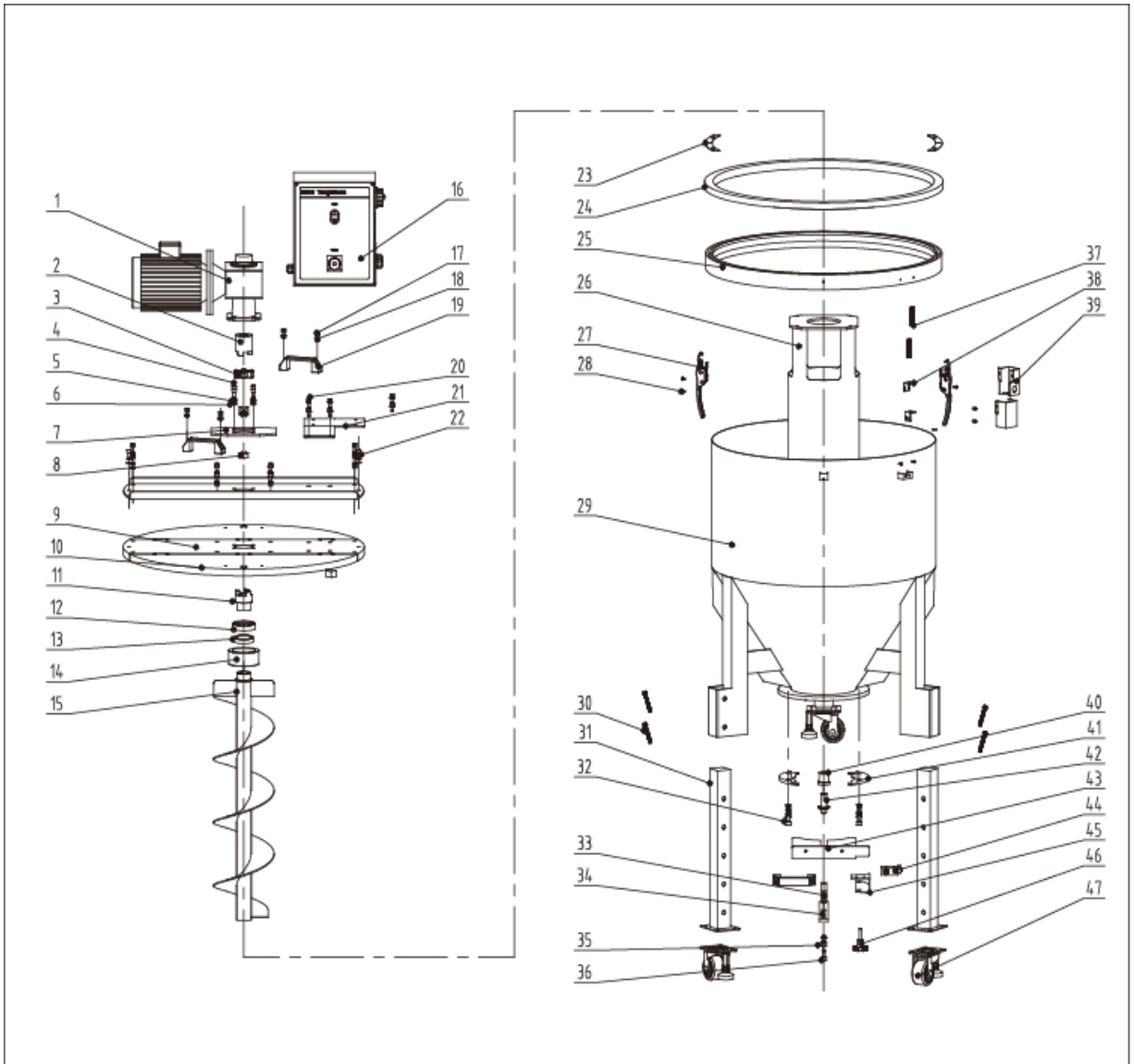


1. Assembly Drawing (SSM-80U)



Remarks: Please refer to material list 2 for specific explanation of the Arabic numbers in parts drawing.

2. Parts List (SSM-80U)

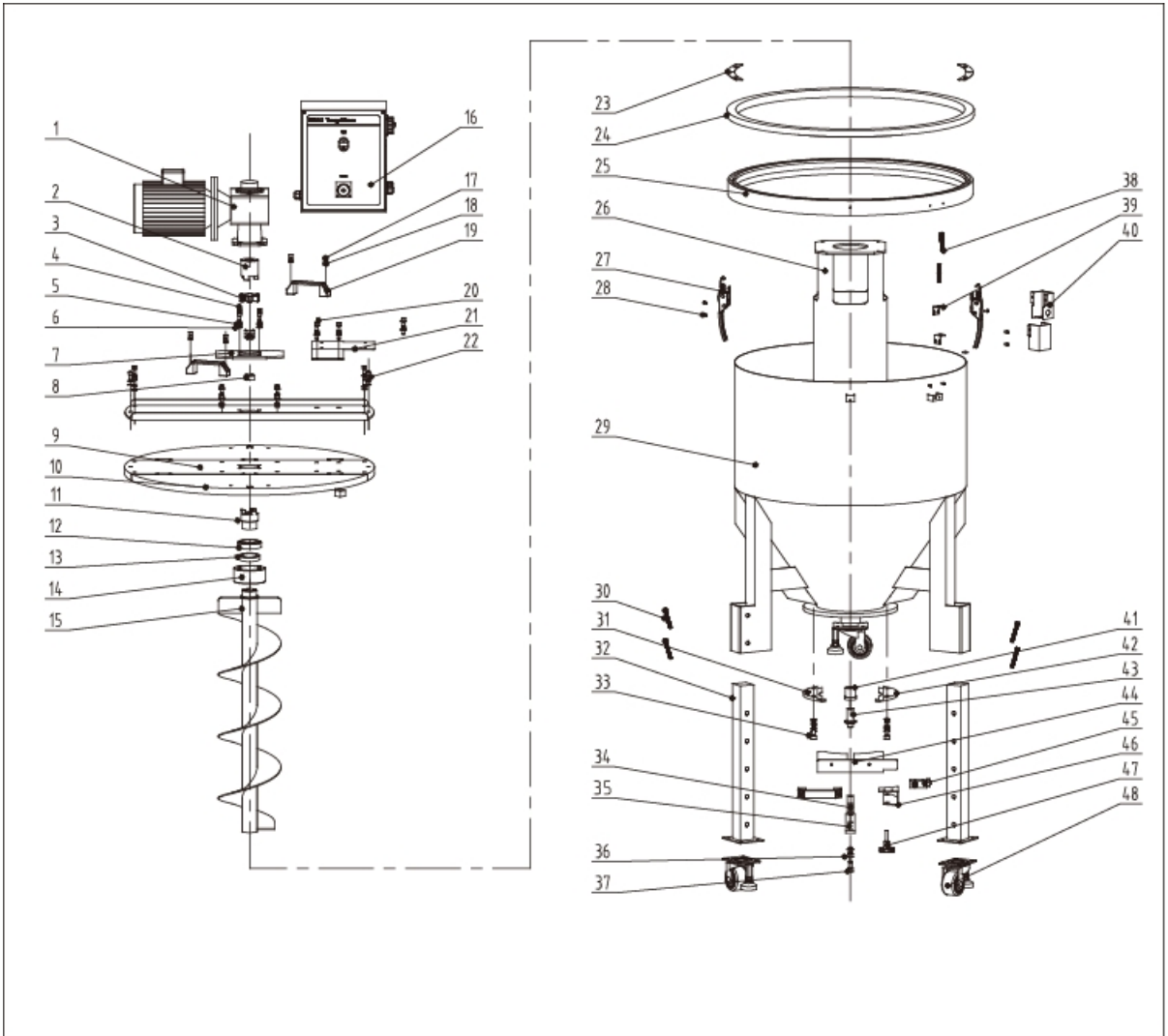
No.	Name	Part No.	No.	Name	Part No.
1	Gear motor *	YM50507500300	25	Aluminum base ring	BH13008001810
2	Shaft connection upper *	BH10160100110	26	Sleeve	-
3	Shaft coupler elastic component ML-95*	YR10009516000	27	Knob SHD-12	YW00121000000
4	Inner hexagon cylindrical screw M8x50	YW61085000000	28	Cross recessed pan head screw M5	YW63051000000
5	"Standard" spring washer 8	YW65008000100	29	Barrel body assembly	-
6	Flat washer A grade (9x16x1.6)	YW66081900000	30	Hexagon screw bolt M12x70	YW60127000000
7	Motor fixed base	-	31	Gate disc fixed plate	-
8	Handle hook	YW00251000000	32	Inner hexagon column screw M10x30	YW61103000100
9	Middle cover	-	33	Main shaft locating bar 1	-
10	Bilateral cover	-	34	Main shaft locating bar	-
11	Shaft coupler upper	BH11160012711	35	Inner hexagon column screw M10x35	YW61103500000
12	Bearing*	YW11320900000	36	Inner hexagon column screw M6x20	YW61062000300
13	Oil seal 45*65*12*	YR20456512000	37	Reed switch	YE15123000100
14	Bearing block	BL12160000040	38	Magnetic proximity switch fixation base 4	-
15	Blending assembly	BH11008002340	39	Magnetic proximity switch fixation base 1	-
16	Control box	BL44160005020	40	shaft sleeve*	BH11801300310
17	Inner hexagon cylindrical screw M8x20	YW61082001200	41	Gate disc fixed plate	BL10800000120
18	Hexagon nut M8 (anti-loose)	YW60082010000	42	Hinge pin*	BH11801400310
19	Aluminum square hand (M8 hole)	BW20012000140	43	Gate disc	-
20	Inner hexagon cylindrical screw M8x12	YW61061200000	44	limit switch	YE14450000000
21	Control box fixed plate	-	45	Microswitch fixed base	-
22	Inner hexagon cylindrical screw M8x40	YW61084000000	46	Star handle	YR40083500000
23	Barrel cover padding edge	-	47	Castor 3"	YW03000301000
24	Barrel fastener	YR10005000300	48		

* means possible broken parts.

** means easy broken part. and spare backup is suggested.

Please confirm the version of manual before placing the purchase order to guarantee that the item number of the spare part is in accordance with the real object.

1. Assembly Drawing (SSM-160U)



Remarks: Please refer to material list 2 for specific explanation of the Arabic numbers in parts drawing.

2. Parts List (SSM-160U)

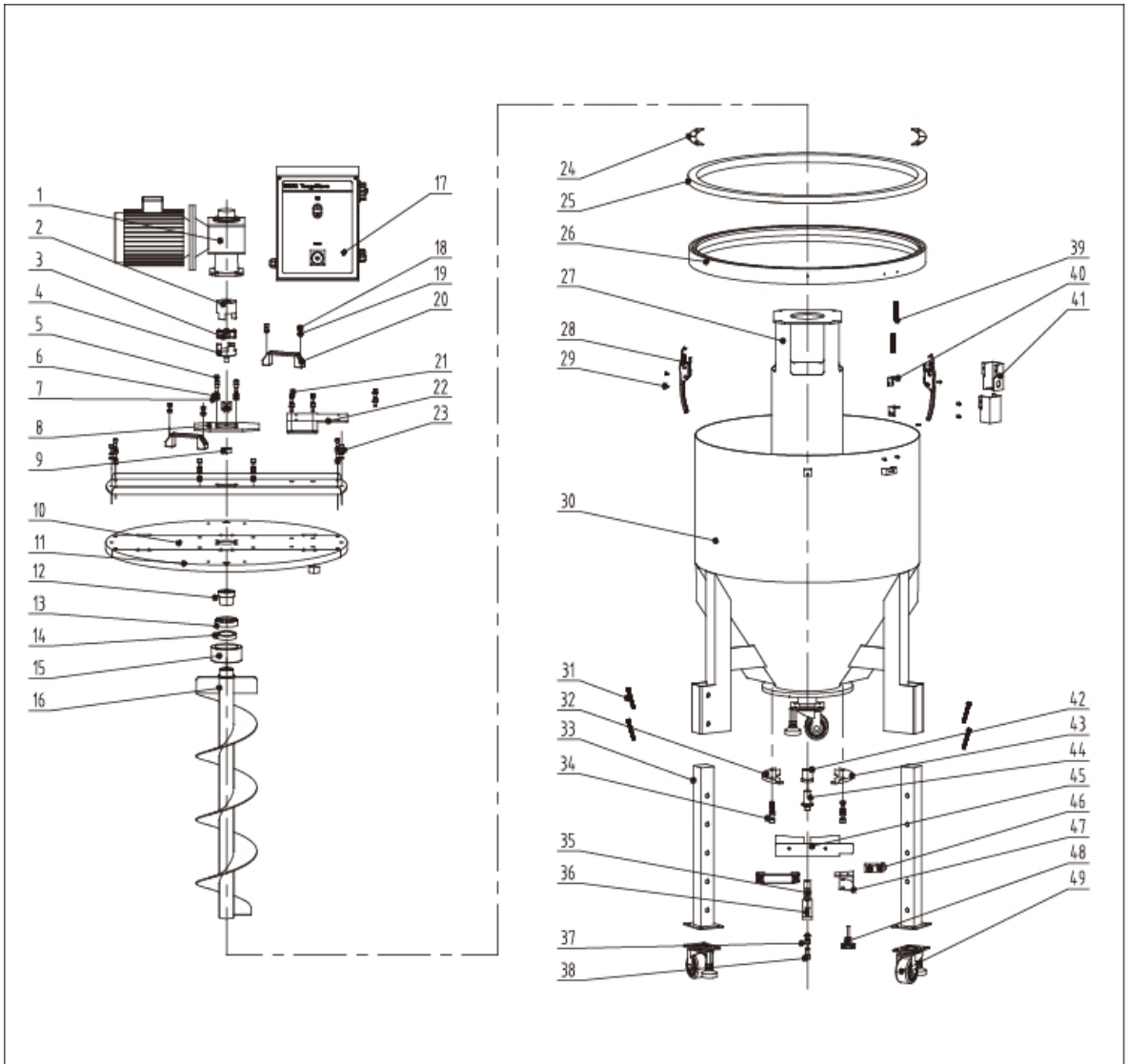
No.	Name	Material No.	No.	Name	Material No.
1	Gear box *	YM50507500300	25	Aluminum base ring	BH13016002210
2	Shaft connection upper*	BH10160100110	26	Sleeve	-
3	Shaft coupler elastic component ML-95*	YR10009516000	27	Handle SHD-12	YW00121000000
4	Inner hexagon cylindrical screw M8x50	YW61085000000	28	Cross recessed pan head screw M5	YW63051000000
5	Standard spring washer 8	YW65008000100	29	Barrel body assembly	-
6	Flat washer A grade (9x16x1.6)	YW66081900000	30	Hexagon screw bolt M12x85	YW60128500000
7	Motor fixed base	-	31	Gate disc fixed plate 1	BL50160600120
8	Handle hook	YW00251000000	32	Slipping machine feet	-
9	Middle cover	-	33	Inner hexagon cylindrical screw M10x30	YW61103000100
10	Bilateral cover	-	34	Main shaft locating bar 1	-
11	Shaft coupler upper	BH11160012711	35	Main shaft locating bar	-
12	Bearing *	YW11320900000	36	Inner hexagon cylindrical screw M10x35	YW61103500000
13	Oil seal 45*65*12*	YR20456512000	37	Inner hexagon cylindrical screw M6x20	YW61062000300
14	Bearing block	BL12160000040	38	Reed switch	YE15123000100
15	Blending assembly	BH11160000040	39	Reed switch fixed seat 4	-
16	Control box	BL44160005020	40	Reed switch fixed seat 1	-
17	Inner hexagon cylindrical screw M8x20	YW61082001200	41	Shaft sleeve **	BR90016002810
18	Hexagon nut M8(anti-loose)	YW60082010000	42	Gate disc fixed plate 2	BL34016041420
19	Aluminum square hand (M8 hole)	BW20012000140	43	Hinge pin *	BL10160000120
20	Inner hexagon cylindrical screw M8x12	YW61061200000	44	Gate disc	-
21	Control box fixed plate	-	45	Limit switch	YE14450000000
22	Inner hexagon cylindrical screw M8x40	YW61084000000	46	Micro-switch fixed base	-
23	Barrel cover padding edge	-	47	Star handle	YR40083500000
24	Barrel fastener	YR10005000300	48	Castor 3"	YW03000301000

* means possible broken parts.

** means easy broken part. and spare backup is suggested.

Please confirm the version of manual before placing the purchase order to guarantee that the item number of the spare part is in accordance with the real object.

1. Assembly Drawing (SSM-300U)



Remarks: Please refer to material list 2 for specific explanation of the Arabic numbers in parts drawing.

2. Parts List (SSM-300U)

No.	Name	Material No.	No.	Name	Material No.
1	Gear box *	YM50507500900	26	Aluminum base ring	BH13016002210
2	Shaft connection upper*	BH10030002640	27	Sleeve	-
3	Shaft coupler elastic component ML-100*	YR10010030000	28	Handle SHD-12	YW00121000000
4	Shaft connection lower	BH11300004711	29	Cross recessed pan head screw M5	YW63051000000
5	Inner hexagon cylindrical screw M8x50	YW61085000000	30	Barrel body assembly	-
6	Standard spring washer 8	YW65008000100	31	Hexagon screw bolt M12x85	YW60128500000
7	Flat washer A grade(9x16x1.6)	YW66081900000	32	Gate disc fixed plate 1	BL50160600120
8	Motor fixed base	-	33	Slipping machine feet	-
9	Handle hook	YW00251000000	34	Inner hexagon cylindrical screw M10x30	YW61103000100
10	Middle cover	-	35	Main shaft locating bar 1	-
11	Bilateral cover	-	36	Main shaft locating bar	-
12	Shaft coupler upper	BH11300000711	37	Inner hexagon cylindrical screw M10x35	YW61103500000
13	Bearing*	YW11320900000	38	Inner hexagon cylindrical screw M6x20	YW61062000300
14	Oil seal 45*65*12*	YR20456512000	39	Reed switch	YE15123000100
15	Bearing block	BL12160000040	40	Reed switch fixed seat 4	-
16	Blending assembly	BH11300000740	41	Reed switch fixed seat 1	-
17	Control box	BL44160005020	42	Shaft sleeve**	BL12300000221
18	Inner hexagon cylindrical screw M8x20	YW61082001200	43	Gate disc fixed plate 2	BL34016041420
19	Hexagon nut M8 (anti-loose)	YW60082010000	44	Hinge pin *	BL10300000120
20	Aluminum square hand (M8 hole)	BW20012000140	45	Gate disc	-
21	Inner hexagon cylindrical screw M8x12	YW61061200000	46	Limit switch	YE14450000000
22	Control box fixed plate	-	47	Micro-switch fixed base	-
23	Inner hexagon cylindrical screw M8x40	YW61084000000	48	Star handle	YR40083500000
24	Barrel cover padding edge	-	49	Castor 3"	YW03000301000
25	Barrel fastener	YR10005000300			

* means possible broken parts.

** means easy broken part. and spare backup is suggested.

Please confirm the version of manual before placing the purchase order to guarantee that the item number of the spare part is in accordance with the real object.