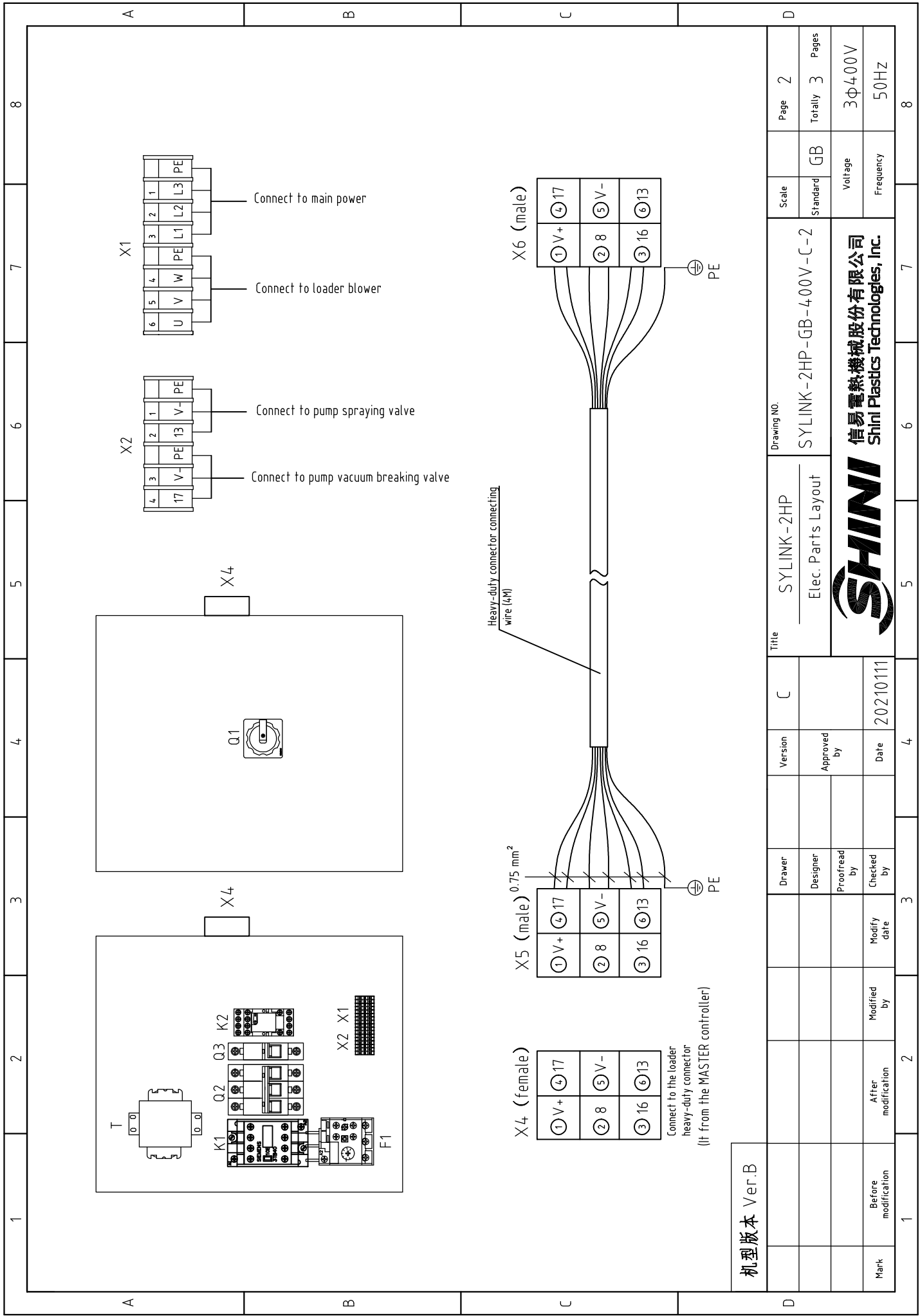



机版本 Ver.B

Mark	Before modification	Modified by	Modify date	Checked by	Date	Version	C	Title	Drawing NO.		Scale	Page 1
	After modification				20210111				Approved by	SYLINK-2HP		
										GB	Totally 3	Pages
										Voltage	3Φ400V	
										Frequency	50HZ	
1	2	3	4	5	6	7	8					



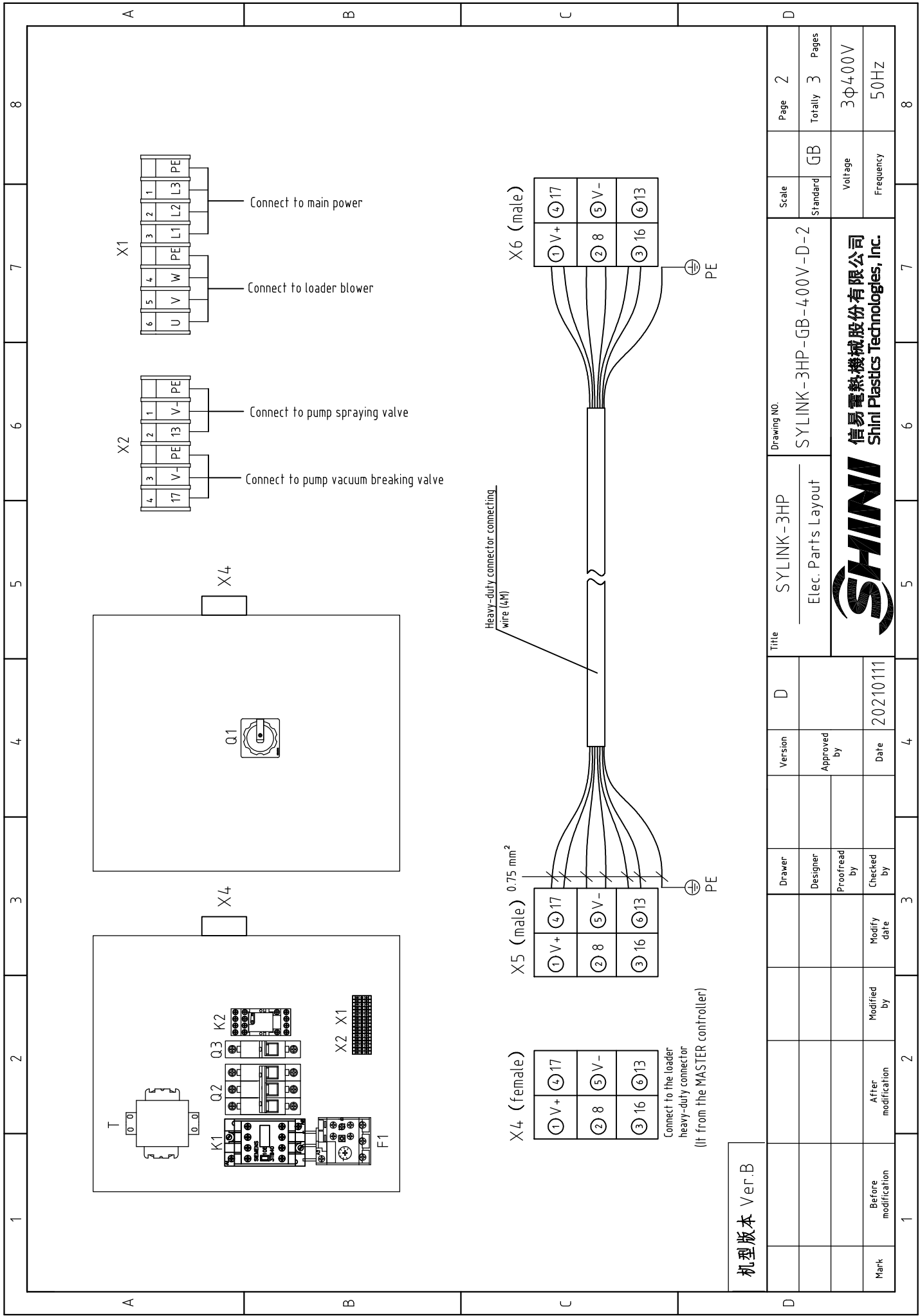


机型版本 Ver.B

Mark	Before modification	Modified by	Modify date	Checked by	Date	Approved by	Version	C	Title	Drawing NO.		Page	2	
	After modification	Modified by	Modify date							Standard	GB	Totally	3	Pages
SYLINK-2HP Elec. Parts Layout										SYLINK-2HP-GB-400V-C-2		Scale		
 <b>信易電熱機械股份有限公司</b> <b>Shini Plastics Technologies, Inc.</b>										Voltage		3φ400V		
										Frequency		50HZ		
1	2	3	4	5	6	7	8							

1		2		3		4		5		6		7		8	
NO.	Symbol	Name	Manufacturer	Type	Specification	Number	Material number	Remark							
1	Q1	Main power switch	EATON	T0-2-1/EA/SVB/20A	20A	1	YE10021160000								
2	Q2	Circuit breakers	TECO	BM-63C/3016S	16A 3P	1	YE40301603000								
3	Q3	Circuit breakers	TECO	BM-63C/1003S	3A 1P	1	YE40100203000								
4	T	Transformer	JIUXIN	IN=4.15V/4.00V OUT=2.4V	80VA	1	YE70040006500								
5	K1	Contactors	SIEMENS	3RT6016-1AB01	24VAC	1	YE00601602500								
6	K2	Middle relay	WEIDMULLER	DRM270024LT	24VDC 12A	1	YE03272400000								
7	F1	Thermal overload relays	SIEMENS	3RU6116-1FB0	3.5-5A	1	YE01160350000								
8	X1,X2	Card-type terminal	HONEYWELL	SK2.5	2.5mm <sup>2</sup>	10	YE60002503200								
9		Wiring terminal	HONEYWELL	GK2.5PE	2.5mm <sup>2</sup> PE	4	YE60002503400								
10	X4	Heavy duty connector	HARTING	Han E-6F	6P+PE	1	YE68000601300								
11	X5,X6	Heavy duty connector	HARTING	Han E-6M	6P+PE	2	YE68000601700								
12		Cable lock head	----	PG16	PCS	2	YE67001600000								
13		Terminal fittings E/GK series	HONEYWELL	----	----	4	YE60000003900								
机 型 版 本 Ver.B															
				Version		C		Title		Drawing NO.		Scale		Page	
				Approved by				SYLINK-2HP		SYLINK-2HP-GB-400V-C-3		Standard		Page 3	
				Date		20210111		Elec. Parts List 1				GB		Totally 3 Pages	
				Checked by				SHINI				Voltage		3φ4.00V	
				Modify date				信易電熱機械股份有限公司				Frequency		50HZ	
				Modified by				SHINI							
				After modification				SHINI							
Mark		Before modification		Modified by				20210111							
1		2		3		4		5		6		7		8	





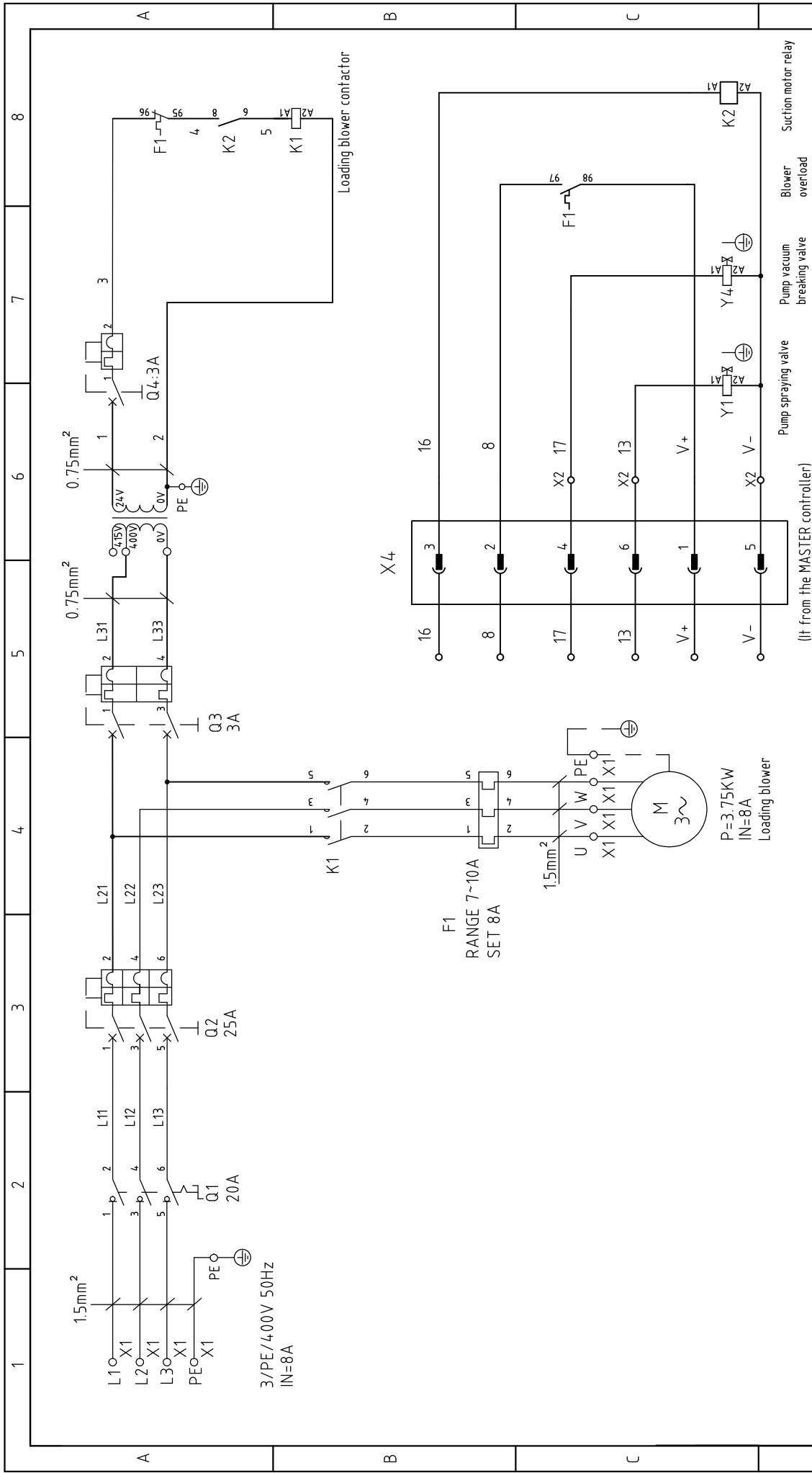
机型版本	Ver.B
Mark	Before modification
Modified by	
Modify date	
Checked by	
Date	20210111
Approved by	
Version	D
Drawer	
Designer	
Proofread by	

Title		SYLINK-3HP		Drawing NO.		SYLINK-3HP-GB-400V-D-2		Scale		Page 2	
Elec. Parts Layout								Standard		Page 3	
								Voltage		3Φ400V	
								Frequency		50Hz	
								GB		Totally 3	
										8	



1		2		3		4		5		6		7		8	
NO.	Symbol	Name	Manufacturer	Type	Specification	Number	Material number	Remark							
1	Q1	Main power switch	EATON	T0-2-1/EAS/SVB/20A	20A	1	YE1002160000								
2	Q2	Circuit breakers	TECO	BM-63C/3016S	16A 3P	1	YE40301603000								
3	Q3	Circuit breakers	TECO	BM-63C/1003S	3A 1P	1	YE401000203000								
4	T	Transformer	JIUXIN	IN=4.15V/4.00V OUT=24V	80VA	1	YE70040006500								
5	K1	Contactors	SIEMENS	3RT6016-1AB01	24VAC	1	YE00601602500								
6	K2	Middle relay	WEIDMULLER	DRM270024LT	24VDC 12A	1	YE03272400000								
7	F1	Thermal overload relays	SIEMENS	3RU6116-1FB0	3.5-5A	1	YE01160350000								
8	X1,X2	Card-type terminal	HONEYWELL	SK2.5	2.5mm <sup>2</sup>	10	YE60002503200								
9		Wiring terminal	HONEYWELL	GK2.5PE	2.5mm <sup>2</sup> PE	4	YE60002503400								
10	X4	Heavy duty connector	HARTING	Han E-6F	6P+PE	1	YE68000601300								
11	X5,X6	Heavy duty connector	HARTING	Han E-6M	6P+PE	2	YE68000601700								
12		Cable lock head	----	PG16	PCS	2	YE67001600000								
13		Terminal fittings E/GK series	HONEYWELL	----	----	4	YE60000003900								
机版本 Ver.B															
				Drawer		Version		Title		Drawing NO.		Scale		Page	
				Designer		Approved by		SYLINK-3HP Elec. Parts List 1		SYLINK-3HP-GB-400V-D-3		Standard		Totally 3	
				Proofread by		Date		20210111				GB		Pages	
Mark		Before modification		Modified by		Modify date						Voltage		3Φ400V	
				Checked by								Frequency		50Hz	
1		2		3		4		5		6		7		8	

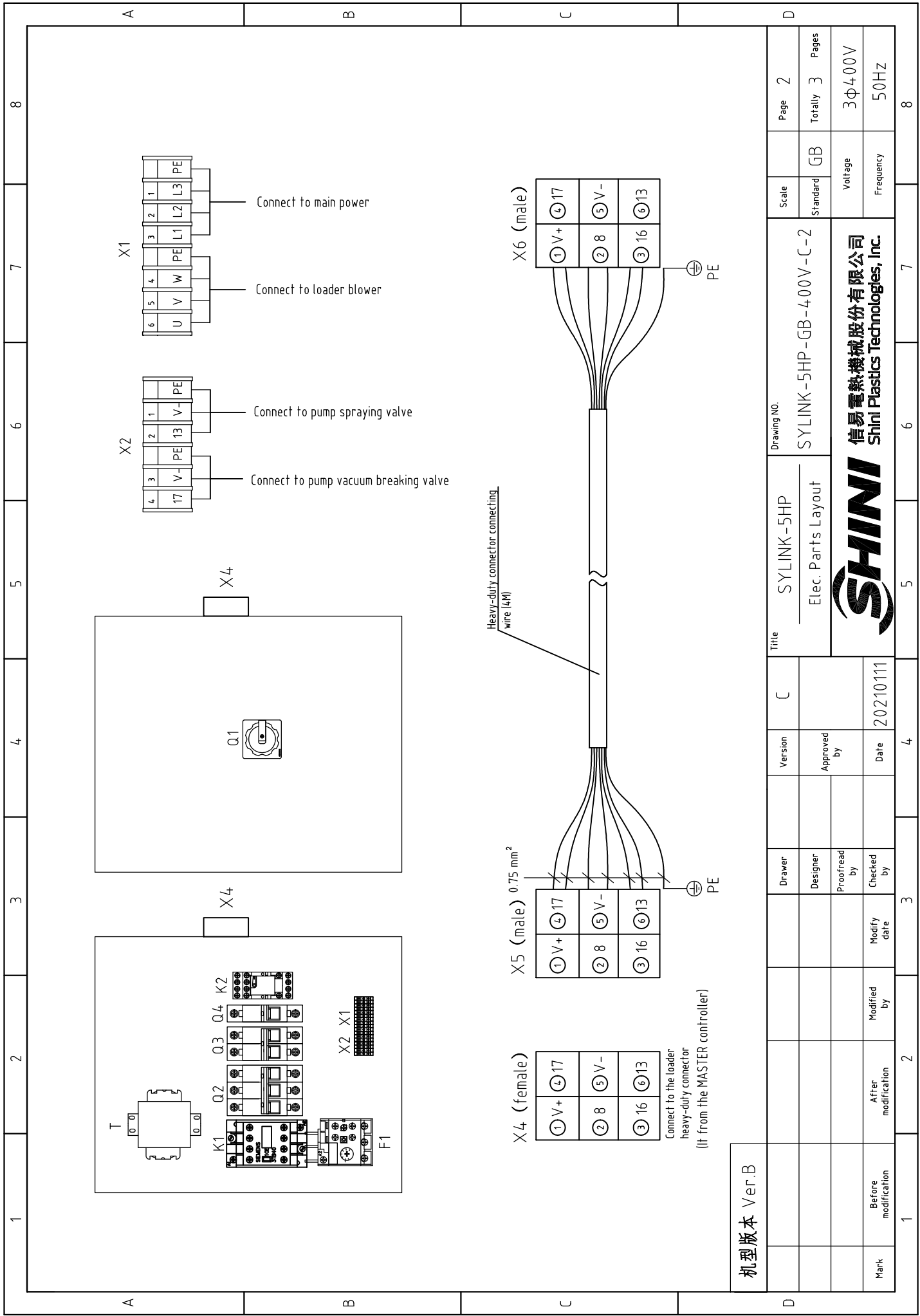




机型版本 Ver.B

Mark	Before modification	Modified by	Modify date	Checked by	Date
					20210111
Drawer	Designer	Proofread by	Checked by	Version	C
				Approved by	
Title SYLINK-5HP					
Drawing No. SYLINK-5HP-GB-400V-C-1					
Main Circuit Diagram					
Scale	Standard	GB	Page	1	
Voltage	Frequency	3Φ400V	Totally	3	
Frequency		50Hz	Pages	8	





机型版本 Ver.B

Mark	Before modification	Modified by	Modify date	Version	C	Title	Drawing NO.	Page	2
	After modification	Checked by	Date					Scale	2
Mark	Before modification	Modified by	Modify date	Version	C	Title	Drawing NO.	Standard	GB
	After modification	Checked by	Date					Standard	GB
								Voltage	3φ400V
								Frequency	50HZ
								Totally	3
								Pages	8



SYLINK-5HP  
Elec. Parts Layout  
SYLINK-5HP-GB-400V-C-2

Connect to the loader heavy-duty connector (it from the MASTER controller)

X5 (male) 0.75 mm<sup>2</sup>

Heavy-duty connector connecting wire (4M)

Connect to main power

Connect to loader blower

Connect to pump spraying valve

Connect to pump vacuum breaking valve



1		2		3		4		5		6		7		8	
NO.	Symbol	Name	Manufacturer	Type	Specification	Number	Material number	Remark							
1	Q1	Main power switch	EATON	T0-2-1/EA/SVB/20A	20A	1	YE1002160000								
2	Q2	Circuit breakers	TECO	BM-63C/3025S	25A 3P	1	YE40302503000								
3	Q3	Circuit breakers	TECO	BM-63C/2003S	3A 2P	1	YE40200203000								
4	Q4	Circuit breakers	TECO	BM-63C/1003S	3A 1P	1	YE40100203000								
5	T	Transformer	JIUXIN	IN=415V/400V OUT=24V	80VA	1	YE70040006500								
6	K1	Contactors	SIEMENS	3RT6017-1AB01	24VAC	1	YE00601702500								
7	K2	Middle relay	WEIDMULLER	DRM270024LT	24VDC 12A	1	YE03272400000								
8	F1	Thermal overload relays	SIEMENS	3RU6116-1JB0	7-10A	1	YE01167100000								
9	X1,X2	Card-type terminal	HONEYWELL	SK2.5	2.5mm <sup>2</sup>	10	YE60002503200								
10		Wiring terminal	HONEYWELL	GK2.5PE	2.5mm <sup>2</sup> PE	4	YE60002503400								
11	X4	Heavy duty connector	HARTING	Han E-6F	6P+PE	1	YE68000601300								
12	X5,X6	Heavy duty connector	HARTING	Han E-6M	6P+PE	2	YE68000601700								
13		Cable lock head	----	PG16	PCS	2	YE67001600000								
14		Terminal fittings E/GK series	HONEYWELL	----	----	4	YE60000003900								
机型版本 Ver.B															
		Drawer		Version		C		Title		Drawing NO.		Scale		Page	
		Designer		Approved by				SYLINK-5HP Elec. Parts List 1		SYLINK-5HP-GB-400V-C-3		Standard		Page 3	
		Proofread by		Date		20210111						GB		Totally 3 Pages	
Mark		After modification		Modified by		Modify date						Voltage		3Φ4.00V	
												Frequency		50HZ	
1		2		3		4		5		6		7		8	







