

机型版本 Ver.D

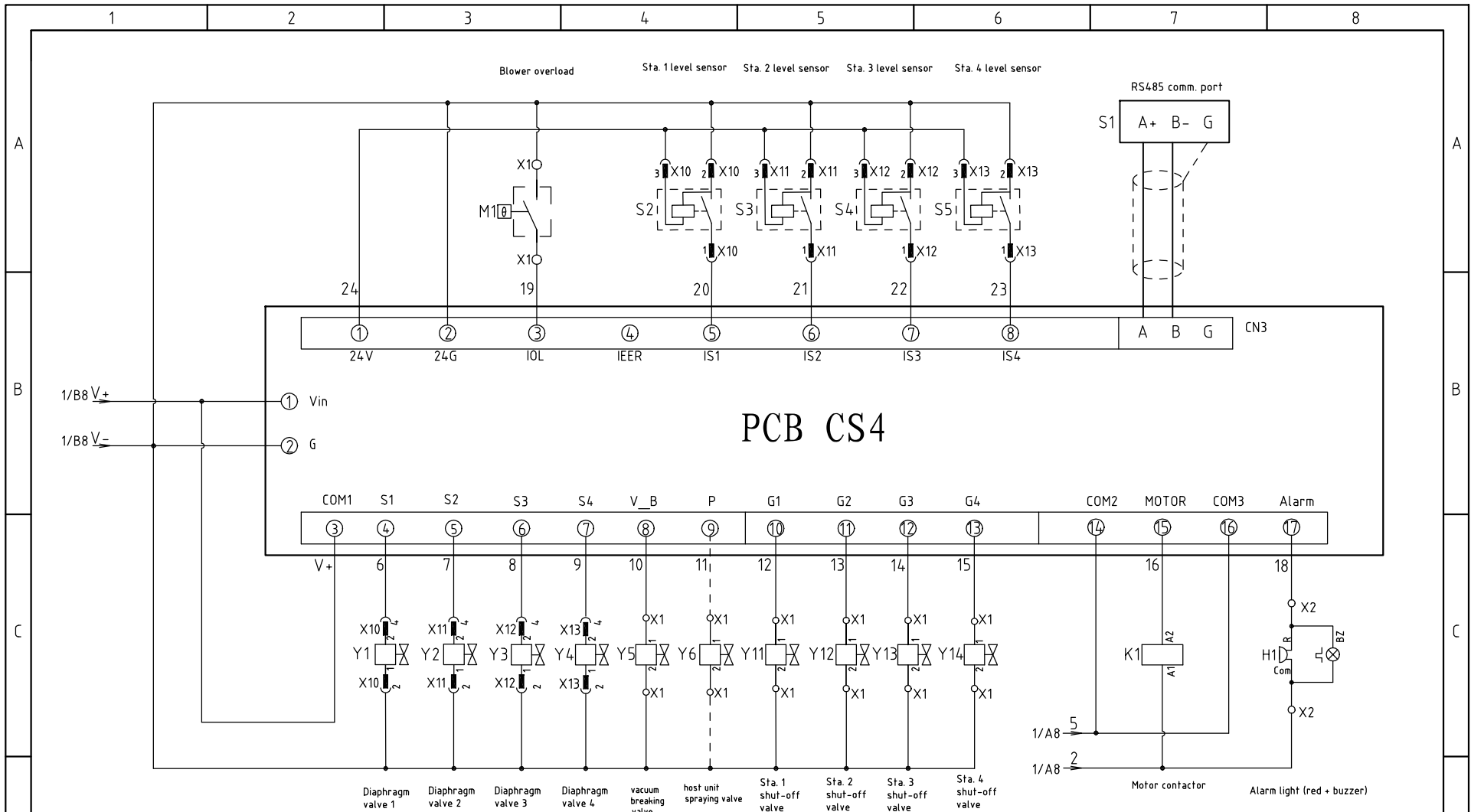
Mark	Before modification	After modification	Modified by	Modify date	Checked by	Date	20191220
					Proofread by		
					Designer	Version	E
					Drawer	Approved by	

Title SAL-2HP-UG124  
Main Circuit Diagram

Drawing NO. SAL-2HP-UG124-CE-230V-E-1

Scale	Page 1
Standard CE	Totally 4 Pages
Voltage	3φ230V
Frequency	50Hz





PCB CS4

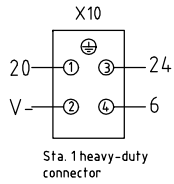
机型版本 Ver.D

Notes: M1 is the thermal protector inside the suction blower.

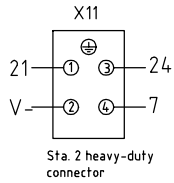
D					Drawer	Version	E	Title	SAL-2HP-UG124	Drawing NO.	Scale	Page	2
					Designer	Approved by		Control Circuit Diagram	SAL-2HP-UG124-CE-230V-E-2	Standard	CE	Totally	4 Pages
Mark	Before modification	After modification	Modified by	Modify date	Proofread by	Checked by	Date	<b>信易電熱機械股份有限公司</b> <b>Shini Plastics Technologies, Inc.</b>	Voltage		3φ230V		
							20191220		Frequency		50Hz		

1 2 3 4 5 6 7 8

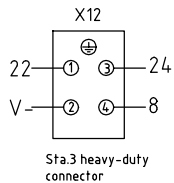
A



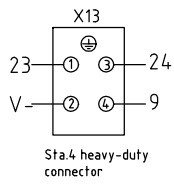
Pin No.	Function	Description
1	Level signal (SENS)	Connect to level sensor 1
2	GND(COM)	
3	24 V+	24VDC solenoid valve
4	Connect to diaphragm valve 1	



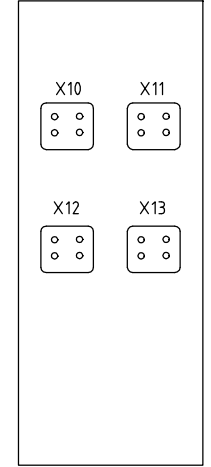
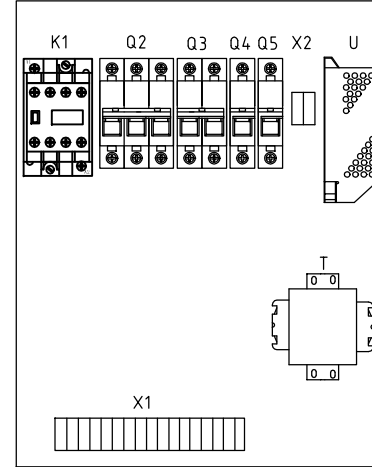
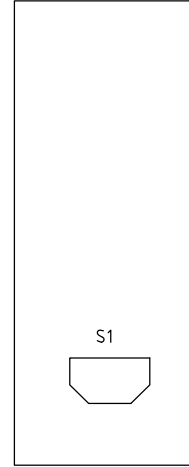
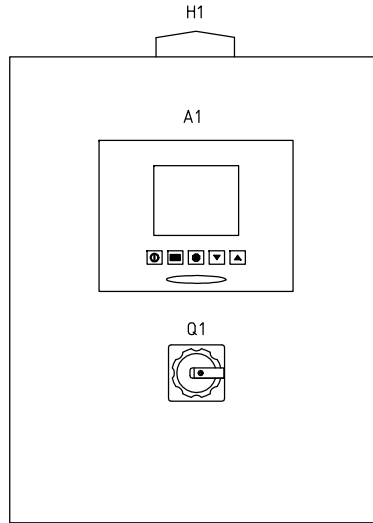
Pin No.	Function	Description
1	Level signal (SENS)	Connect to level sensor 2
2	GND(COM)	
3	24 V+	24VDC solenoid valve
4	Connect to diaphragm valve 2	



Pin No.	Function	Description
1	Level signal (SENS)	Connect to level sensor 3
2	GND(COM)	
3	24 V+	24VDC solenoid valve
4	Connect to diaphragm valve 3	



Pin No.	Function	Description
1	Level signal (SENS)	Connect to level sensor 4
2	GND(COM)	
3	24 V+	24VDC solenoid valve
4	Connect to diaphragm valve 4	



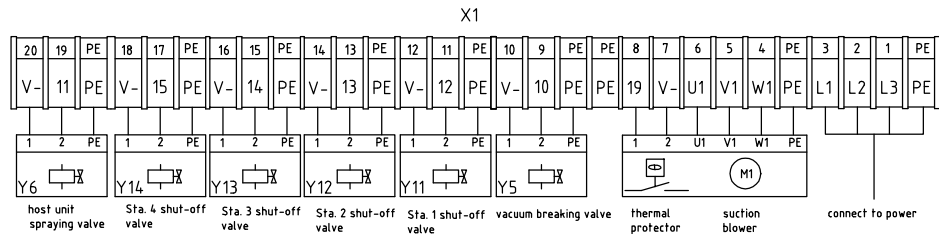
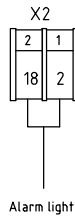
A

B

B

C

C




机型版本 Ver.D

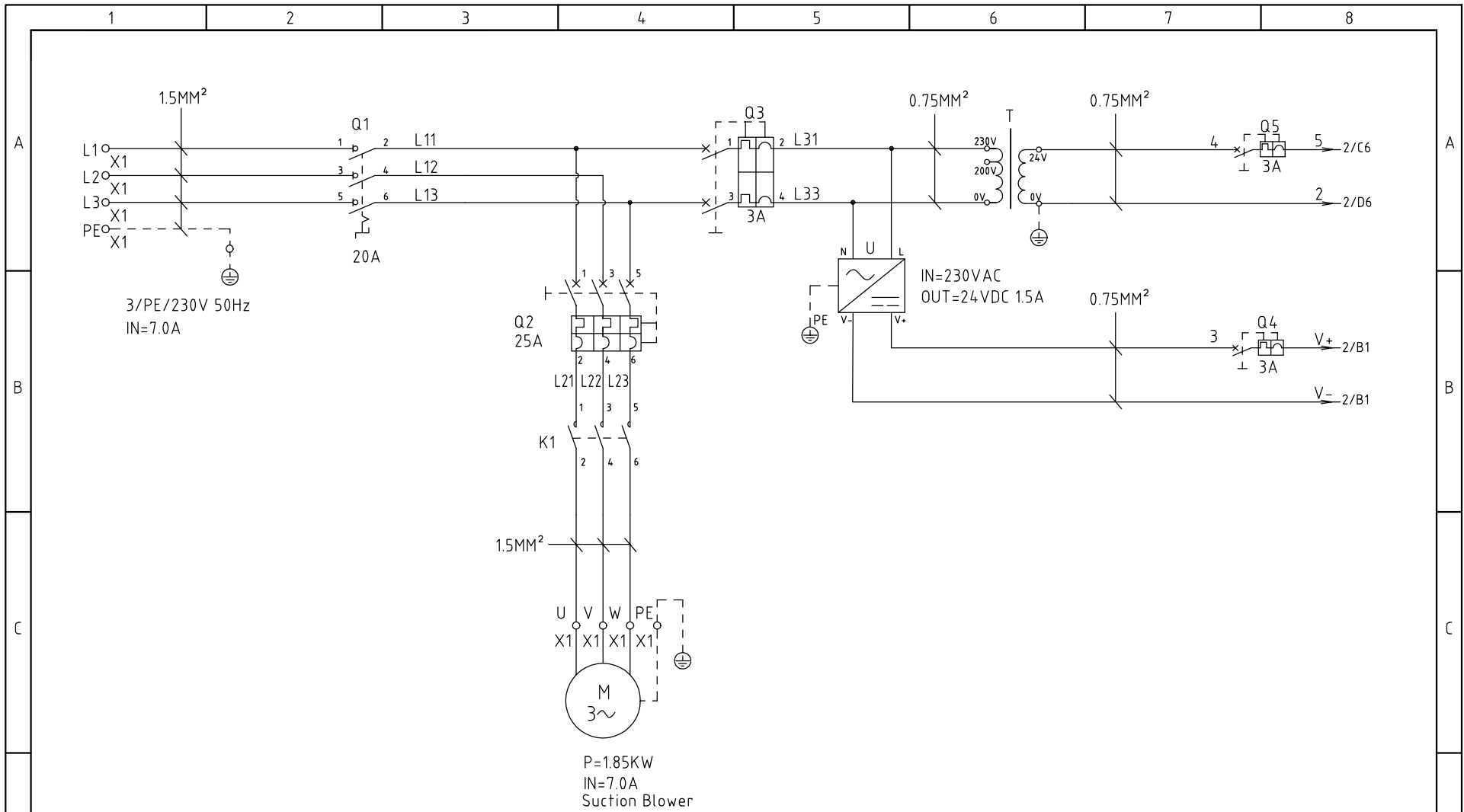
Drawer	Version	E	Title	SAL-2HP-UG124	Drawing NO.	SAL-2HP-UG124-CE-230V-E-3	Scale	Page	3
Designer	Approved by		Elec. Parts Layout & Wiring Diagram				Standard	CE	Totally 4 Pages
Proofread by	Date	20191220	信易電熱機械股份有限公司 Shini Plastics Technologies, Inc.				Voltage	3φ230V	
Mark	Before modification	After modification					Modified by	Modify date	Checked by

D

1 2 3 4 5 6 7 8

1	2		3	4	5	6	7	8
NO	Symbol	Name	Manufacturer	Type	Specification	Number	Material number	Remark
1	Q1	Main switch	EATON	TO-2-1/EA/SVB	20A	1	YE10021160000	
2	Q2	Circuit-breakers	TECO	BM-63C/3020S	20A	1	YE40302003000	
3	Q3	Circuit-breakers	TECO	BM-63C/2003S	3A 2P	1	YE40200203000	
4	Q4 Q5	Circuit-breakers	TECO	BM-63C/1003S	3A 1P	2	YE40100203000	
5	K1	Contactors	SCHNEIDER	LC1-D09B7C	24V 50/60Hz	1	YE00972400000	
6	A1	Controller	YUYUN	CS4	24VAC/DC	1	YE80042401200	
7	S1	RS-485 comm. interface board	YUYUN	---	Dsub-9pin connector	1	YE90048501200	
8		Shell RS-485(SAL-700G-A-19)ver. 0	---	---	---	1	YR40048500000	
9		9-pin serial port connector (male) with shell and screw	---	---	---	1	YE62090000000	
10	H1	Alarm light board	HONGYUN	Red.yel.gre.+ buzzer	24VAC/DC	1	BL90000011520	
11	T	Transformer	JIUXIN	200V/230V OUT=24V	50VA	1	YE70023005100	
12	U	DC power	---	S-35-24	24VDC 1.5A	1	YE71352400000	
13	X1 X2	Terminal Board	HONEYWELL	SK2.5	2.5mm <sup>2</sup>	22	YE60002503200	
14		Terminal Board	HONEYWELL	GK2.5PE	2.5PE	9	YE60002503400	
15		Terminal fittings E/GK series	HONEYWELL	---	PCS	6	YE60000003900	
16	X10-X13	Heavy duty connectors	HARTING	Han E-4F(female)	4P	4	YE68000401400	
17	M	Blower	SHINI	RB-420 with thermal prot.	2HP 230V 50HZ	1	---	(1)
18	Y1-Y6	Solenoid vavle	AIRTAC	---	24VDC	6	---	(1)
19	Y11-Y14	Solenoid vavle	AIRTAC	---	24VDC	4	---	(1)
20	S2-S5	Photoelectricity switch	FOTEK	MT-4MNO-30VDC	10...30VDC	4	---	(1) Photosensor hopper receiver
21		Magnetic proximity switch	SONON	BN12-30BLA	24VDC	4	---	(1) Vacuum hopper receiver

机型版本 Ver.D		Notes: (1)Non-control box installation.								
D	Mark	Before modification	After modification	Modified by	Modify date	Checked by	Date	20191220	 <b>信易電熱機械股份有限公司</b> <b>Shini Plastics Technologies, Inc.</b>	Title SAL-2HP-UG124 Elec. Parts List 1 Drawing NO. SAL-2HP-UG124-CE-230V-E-4 Scale CE Page 4 Standard CE Totally 4 Pages Voltage 3φ230V Frequency 50Hz
	Drawer	Version	E	Approved by						
	Designer	Proofread by								



机型版本 Ver.D

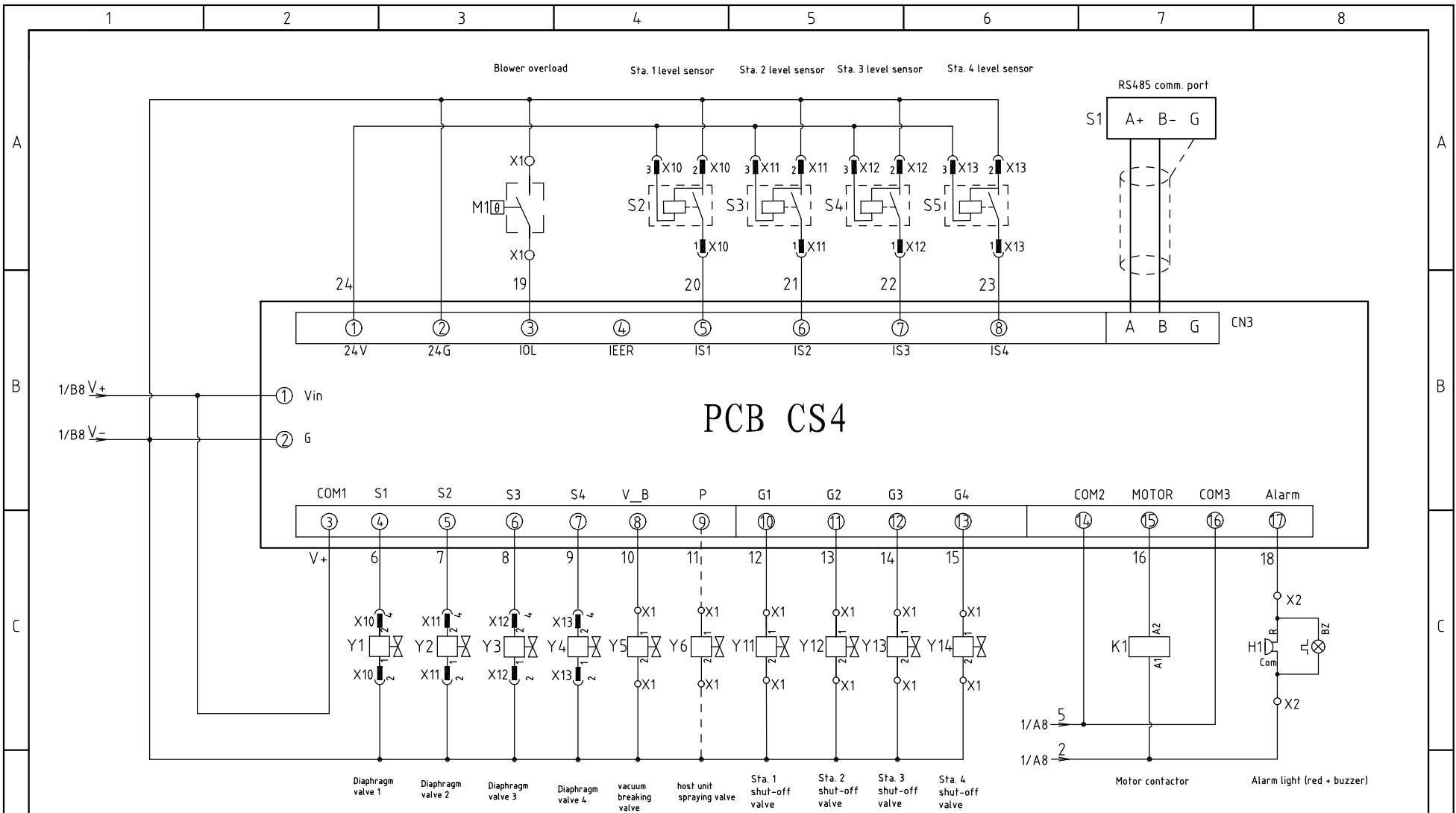
Mark	Before modification	After modification	Modified by	Modify date	Checked by	Date	20191220
					Proofread by		
					Designer		
					Drawer		
					Version	E	
					Approved by		

Title SAL-3HP-UG124  
Main Circuit Diagram

Drawing NO. SAL-3HP-UG124-CE-230V-E-1


**SHINI** 信易電熱機械股份有限公司  
Shini Plastics Technologies, Inc.

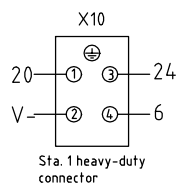
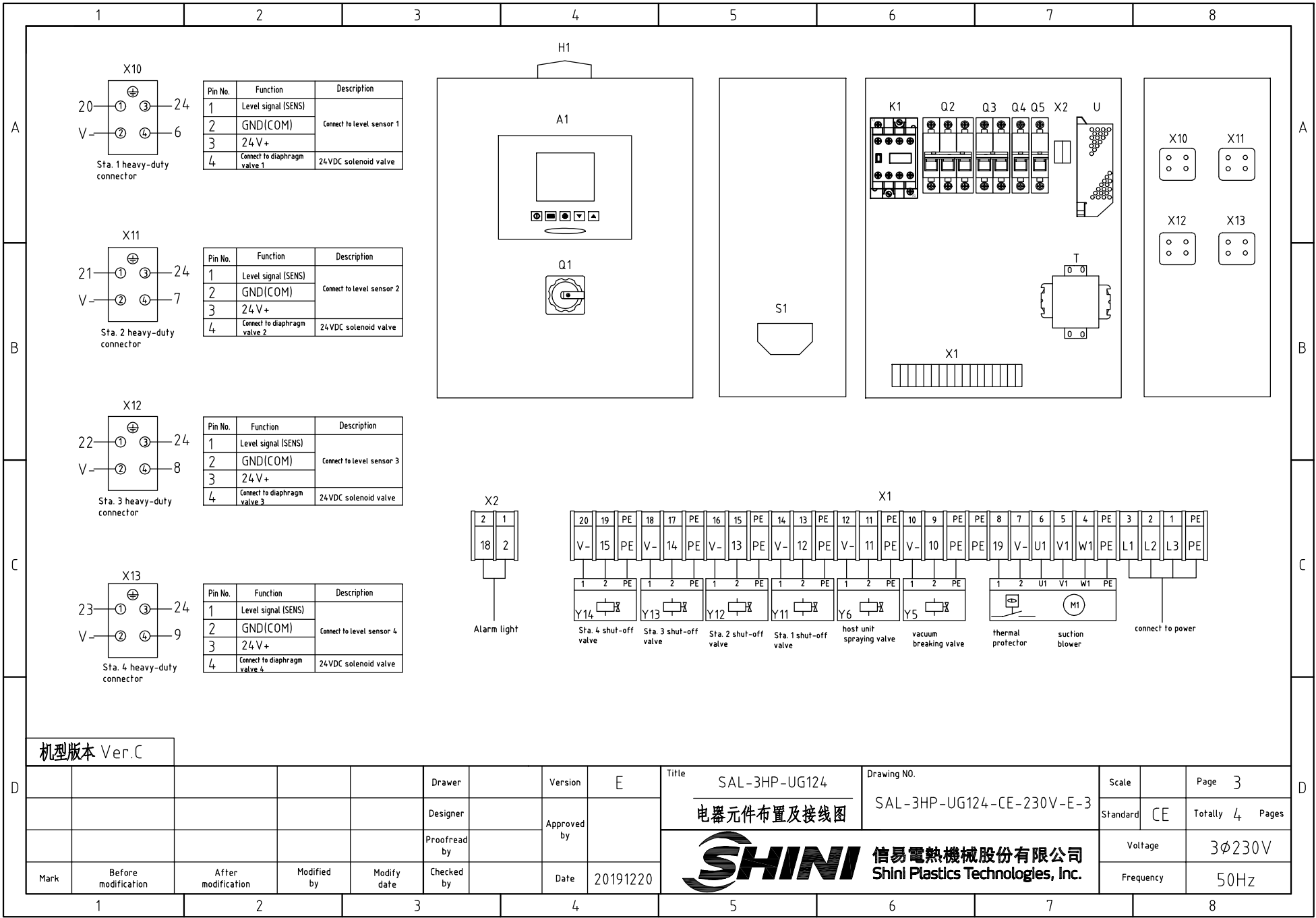
Scale	Page 1
Standard	CE
Voltage	3φ230V
Frequency	50Hz
Totally	4 Pages



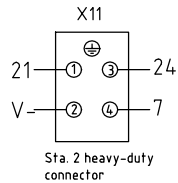
机型版本 Ver.C

Notes: M1 is the thermal protector inside the suction blower.

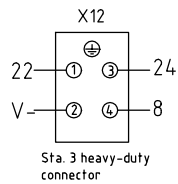
				Drawer	Version	E	Title	SAL-3HP-UG124	Drawing NO.	Scale	Page	2
				Designer	Approved by		Control Circuit Diagram	SAL-3HP-UG124-CE-230V-E-2	Standard	CE	Totally	4 Pages
				Proofread by	Checked by		 <b>信易電熱機械股份有限公司</b> <b>Shini Plastics Technologies, Inc.</b>	Voltage	3φ230V			
Mark	Before modification	After modification	Modified by	Modify date	Date	20191220		Frequency	50Hz			
1	2	3	4	5	6	7	8					



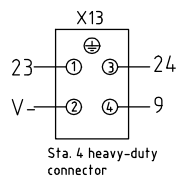
Pin No.	Function	Description
1	Level signal (SENS)	Connect to level sensor 1
2	GND(COM)	
3	24 V+	24VDC solenoid valve
4	Connect to diaphragm valve 1	



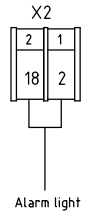
Pin No.	Function	Description
1	Level signal (SENS)	Connect to level sensor 2
2	GND(COM)	
3	24 V+	24VDC solenoid valve
4	Connect to diaphragm valve 2	



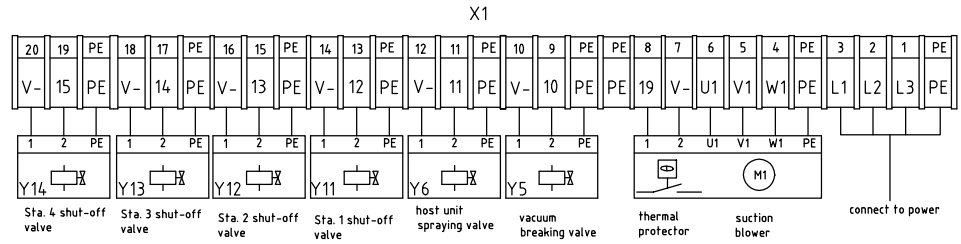
Pin No.	Function	Description
1	Level signal (SENS)	Connect to level sensor 3
2	GND(COM)	
3	24 V+	24VDC solenoid valve
4	Connect to diaphragm valve 3	



Pin No.	Function	Description
1	Level signal (SENS)	Connect to level sensor 4
2	GND(COM)	
3	24 V+	24VDC solenoid valve
4	Connect to diaphragm valve 4	



Alarm light




机型版本 Ver.C

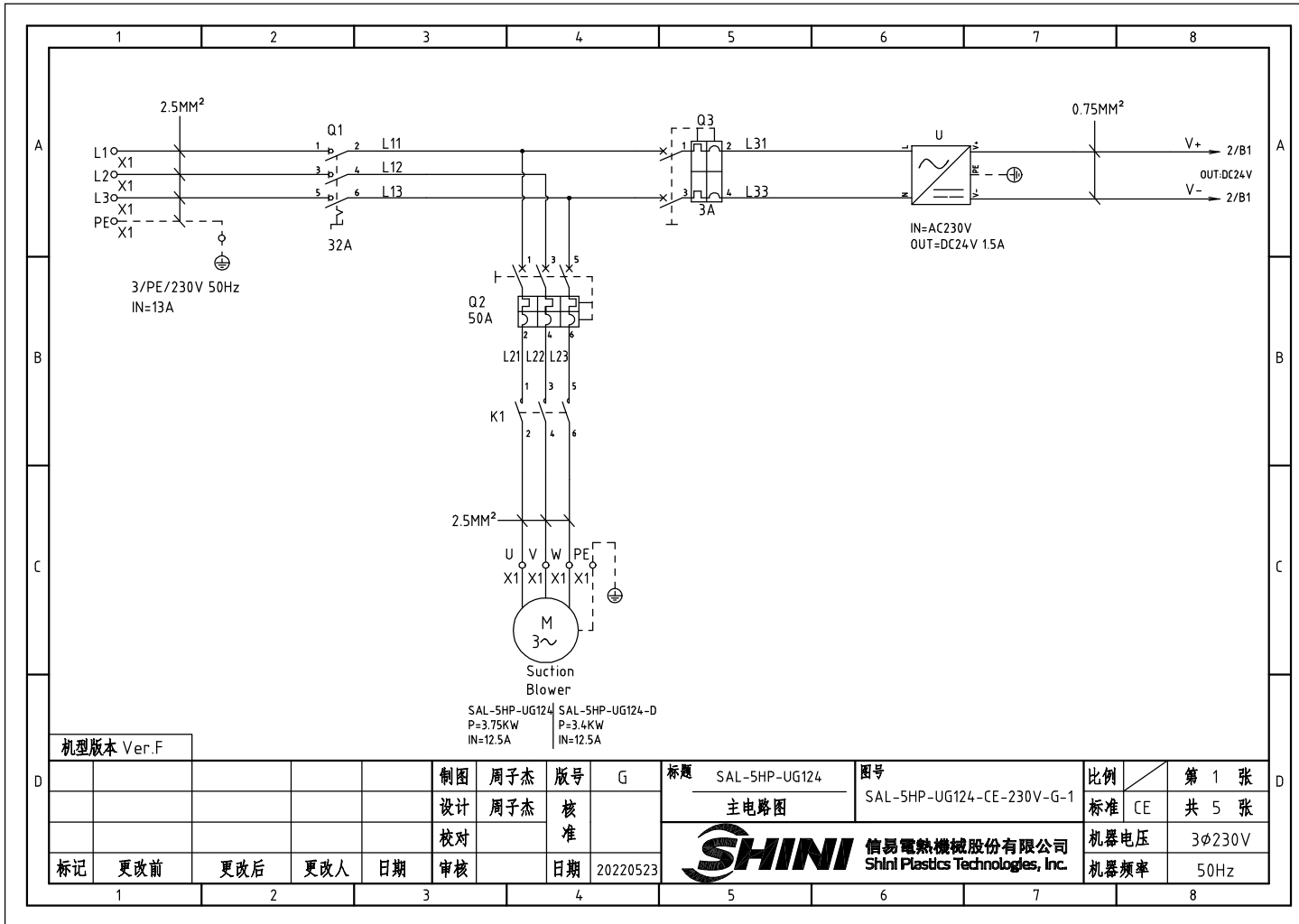
Mark	Before modification	After modification	Modified by	Modify date	Checked by	Date	20191220
Drawer	Version	E	Designer	Approved by	Proofread by		

Title	SAL-3HP-UG124	Drawing NO.	SAL-3HP-UG124-CE-230V-E-3	Scale		Page	3
电器元件布置及接线图				Standard	CE	Totally	4 Pages
<b>信易電熱機械股份有限公司</b> <b>Shini Plastics Technologies, Inc.</b>				Voltage	3φ230V		
				Frequency	50Hz		

	1	2	3	4	5	6	7	8	
	NO	Symbol	Name	Manufacturer	Type	Specification	Number	Material number	Remark
A	1	Q1	Main switch	EATON	T0-2-1/EA/SVB	20A	1	YE10021160000	
	2	Q2	Circuit-breaker	TECO	BM-63C/3025S	25A	1	YE40302503000	
	3	Q3	Circuit-breaker	TECO	BM-63C/2003S	3A 2P	1	YE40200203000	
	4	Q4 Q5	Circuit-breaker	TECO	BM-63C/1003S	3A 1P	2	YE40100203000	
	5	K1	Contactoer	SCHNEIDER	LC1-D09B7C	24V 50/60Hz	1	YE00972400000	
	6	A1	Controllor	YUYUN	CS4	24VAC/DC	1	YE80042401200	
	7	S1	RS-485 comm. interface board	YUYUN	---	双Dsub-9pin接头	1	YE90048501200	
B	8		Shell RS-485(SAL-700G-A-19)ver. 0	---	---	---	1	YR40048500000	
	9		9-pin serial port connector (male) with shell and screw	---	---	---	1	YE62090000000	
	10	H1	Alarm light board	HONGYUN	Red,yel.gre.+ buzzer	24VAC/DC	1	BL90000011520	
	11	T	Transformer	JIUXIN	200V/230V OUT=24V	50VA	1	YE70023005100	
	12	U	DC power	---	S-35-24	24VDC 1.5A	1	YE71352400000	
	13	X1 X2	Terminal Board	HONEYWELL	SK2.5	2.5mm <sup>2</sup>	22	YE60002503200	
	14		Terminal Board	HONEYWELL	GK2.5PE	2.5PE	9	YE60002503400	
C	15		Terminal fittings E/GK series	HONEYWELL	---	PCS	6	YE60000003900	
	16	X10~X13	Heavy duty connectors	HARTING	Han E-4F(female)	4P	4	YE68000401400	
	17	M	Blower	SHINI	RB-430 with thermal prot.	3HP 230V 50HZ	1	---	(1)
	18	Y1~Y6	Solenoid Vavle	AIRTAC	---	24VDC	6	---	(1)
	19	Y11~Y14	Solenoid Vavle	AIRTAC	---	24VDC	4	---	(1)
	20	S2~S5	Photoelectricity switch	FOTEK	MT-4MNO-30VDC	10...30VDC	4	---	(1) Photosensor hopper receiver
	21		Magnetic proximity switch	SONON	BN12-30BLA	24VDC	4	---	(1) Vacuum hopper receiver

机型版本 Ver.C		Notes: (1)Non-control box installation.								
D	Mark	Before modification	After modification	Modified by	Modify date	Checked by	Date	20191220		
	Drawer					Version	E	Title	SAL-3HP-UG124	
	Designer					Approved by			Elec. Parts List 1	
	Proofread by								SAL-3HP-UG124-CE-230V-E-4	
 <b>信易電熱機械股份有限公司</b> <b>Shini Plastics Technologies, Inc.</b>								Scale	Page 4	
								Standard	CE	Totally 4 Pages
								Voltage	3φ230V	
								Frequency	50Hz	



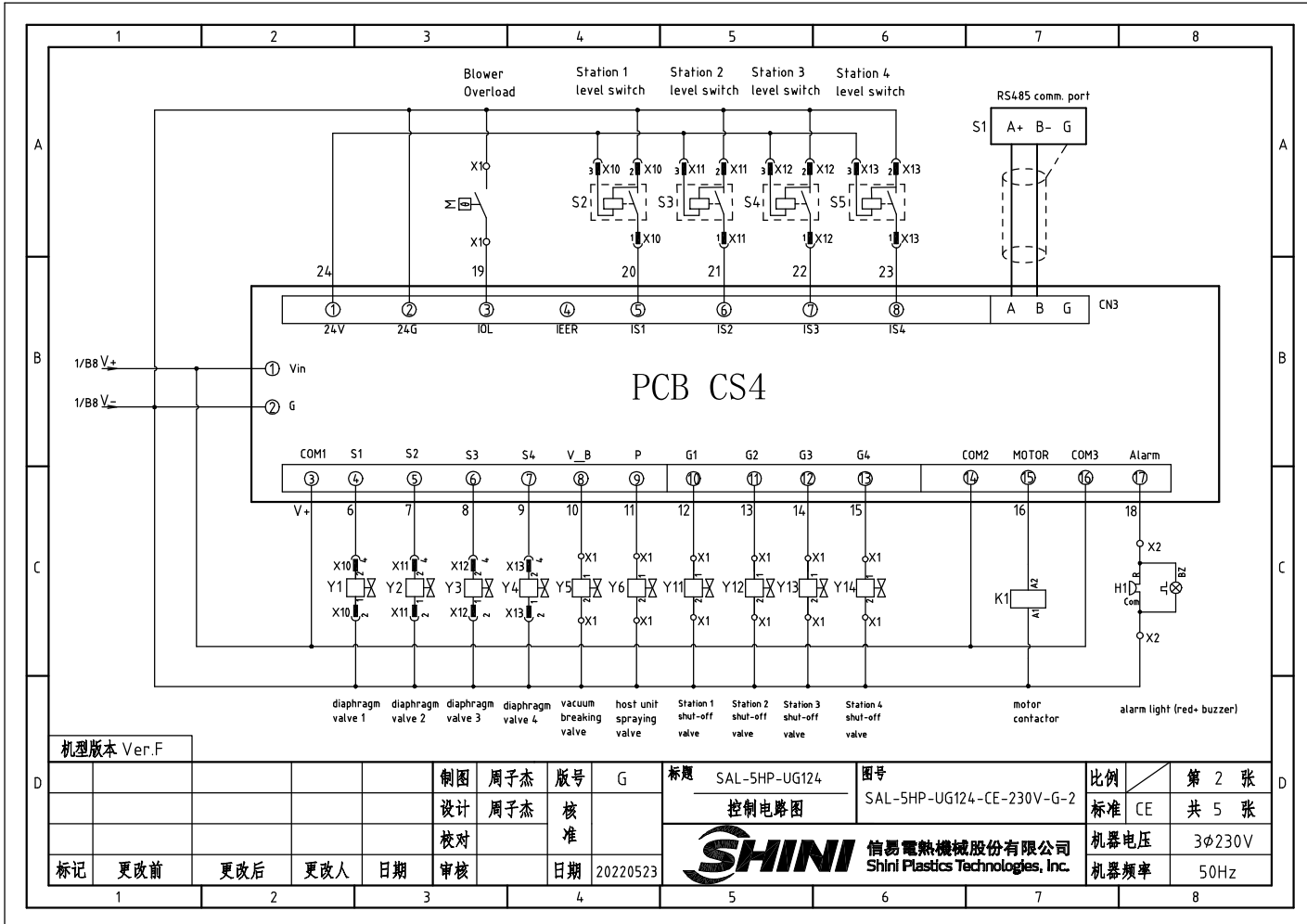


机型版本 Ver.F

					制图	周子杰	版号	G
					设计	周子杰	核	
					校对		准	
标记	更改前	更改后	更改人	日期	审核		日期	20220523
1	2	3	4					

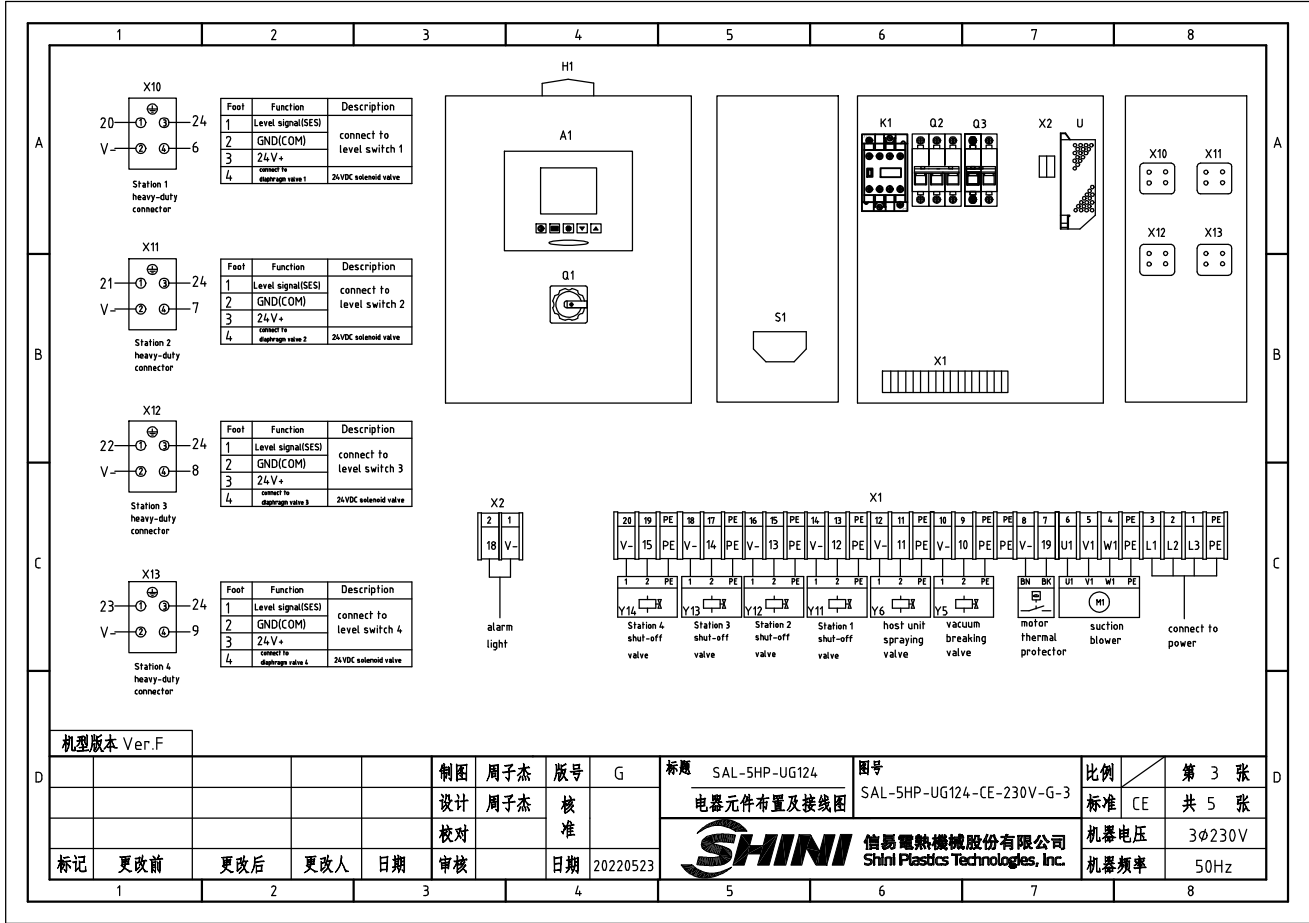
标题	SAL-5HP-UG124	图号	SAL-5HP-UG124-CE-230V-G-1	比例	第 1 张
	主电路图			标准	CE 共 5 张
				机器电压	3φ230V
				机器频率	50Hz





机型版本 Ver.F

D	制图 周子杰				版号 G	标题 SAL-5HP-UG124	图号 SAL-5HP-UG124-CE-230V-G-2	比例	第 2 张
	设计 周子杰				核				标准 CE
	校对				准	SHINI 信易電熱機械股份有限公司 Shini Plastics Technologies, Inc.	机器电压	3φ230V	
标记	更改前	更改后	更改人	日期	审核		日期 20220523	机器频率	50Hz



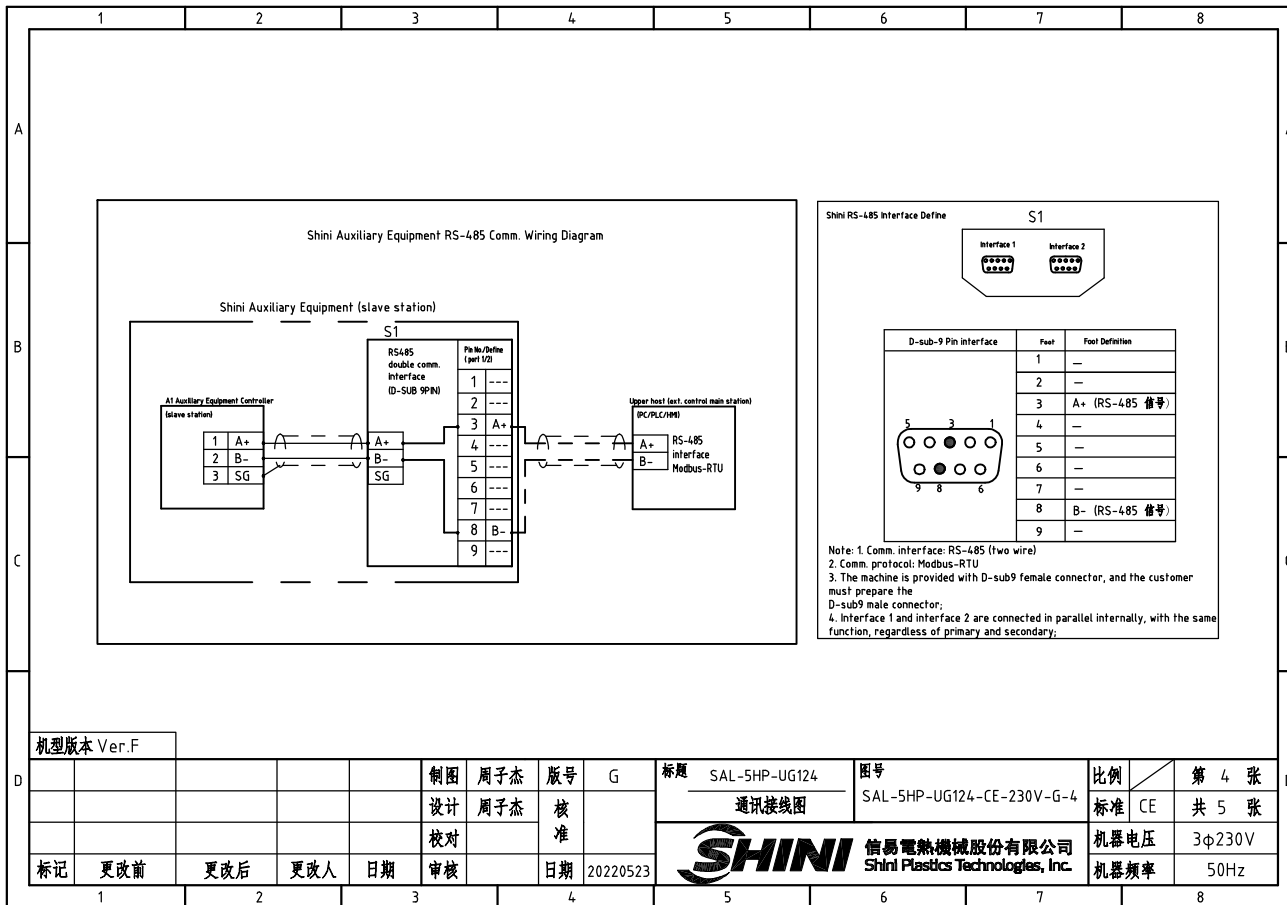
机型版本 Ver.F

制图	周子杰	版号	G
设计	周子杰	核准	
校对		日期	20220523
审核			

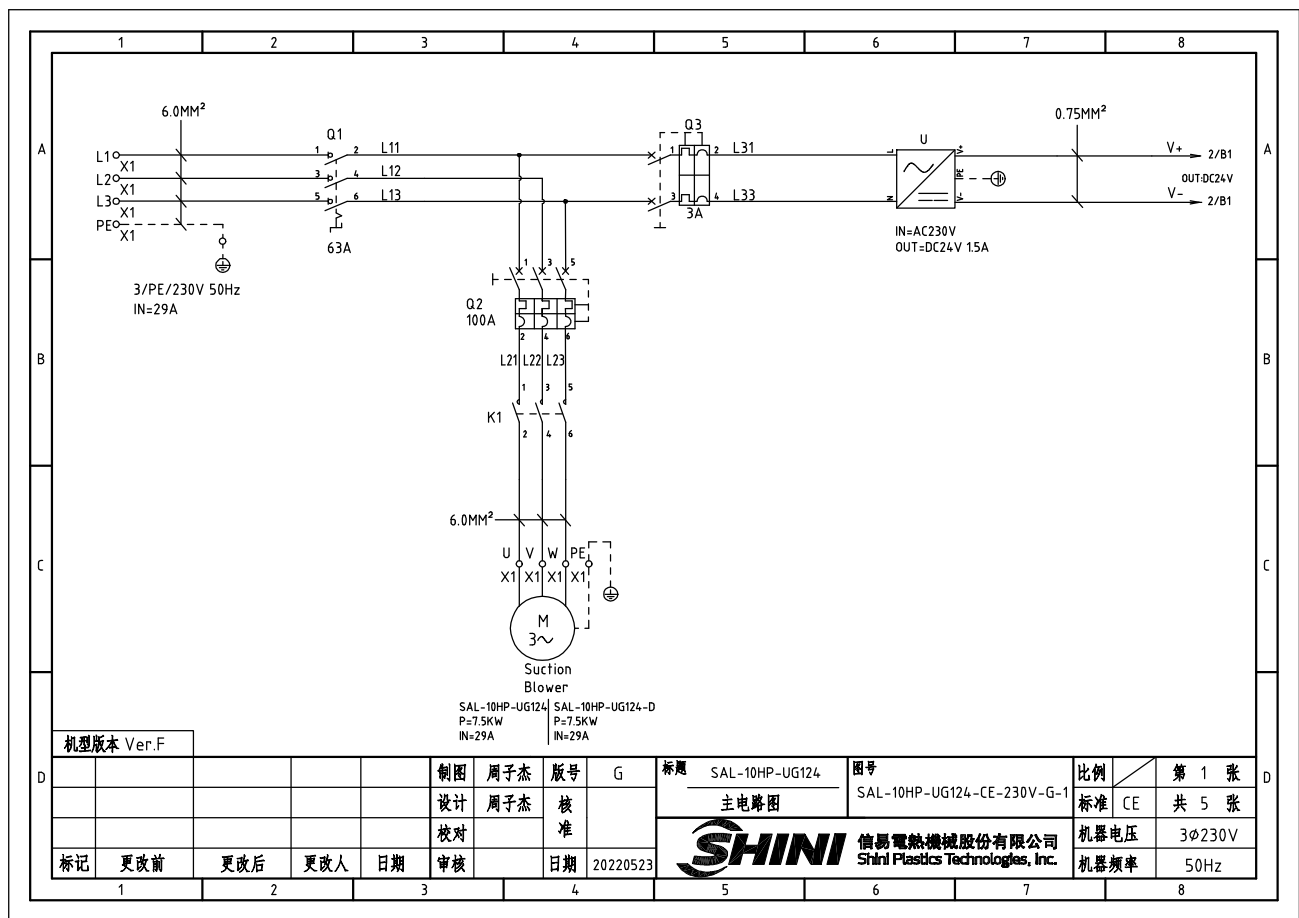
标题 SAL-5HP-UG124  
 图号 SAL-5HP-UG124-CE-230V-G-3  
 电器元件布置及接线图

比例	第 3 张
标准	CE 共 5 张
机器电压	3φ230V
机器频率	50Hz





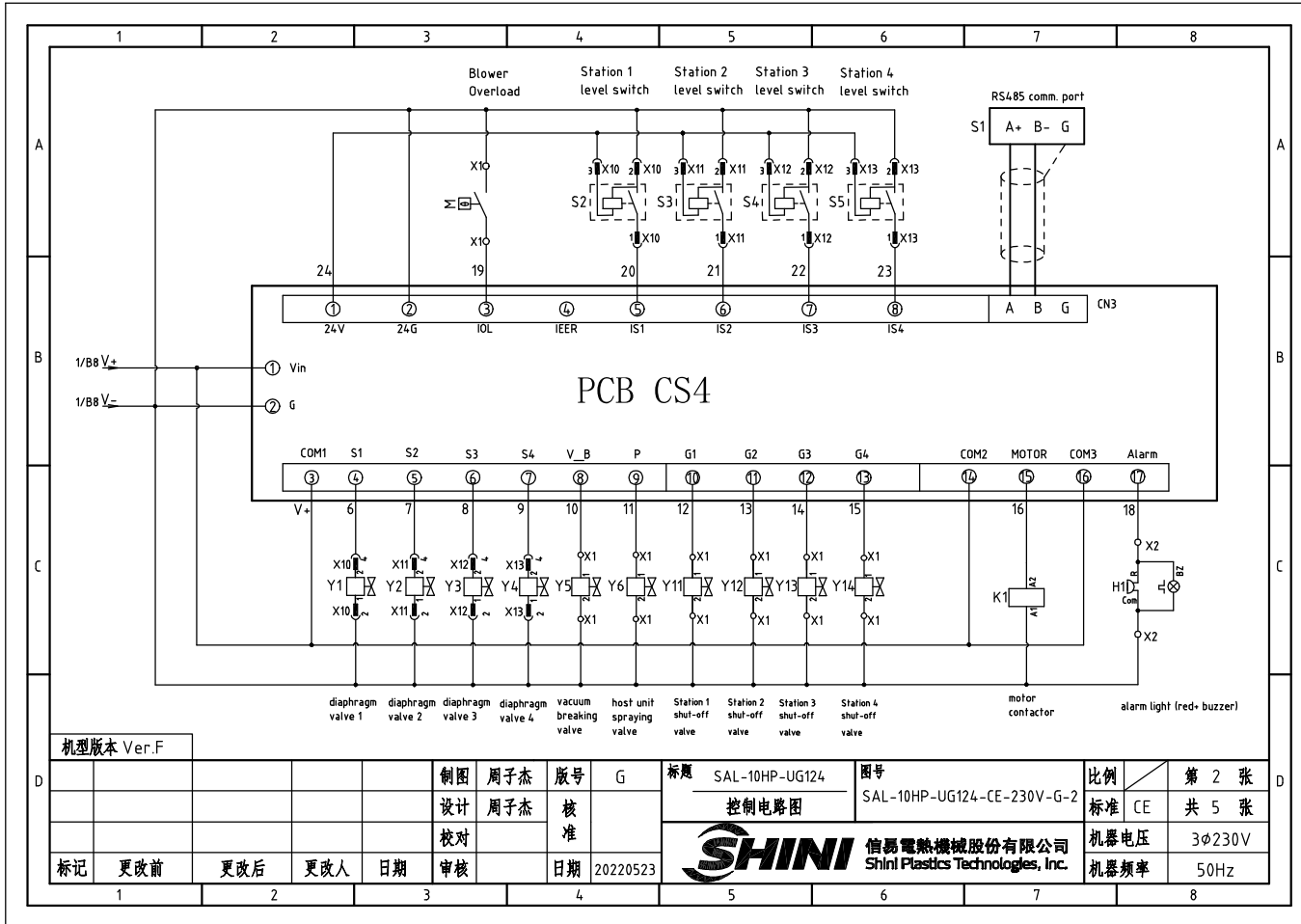




机型版本 Ver.F

					制图	周子杰	版号	G	标题	SAL-10HP-UG124	图号	SAL-10HP-UG124-CE-230V-G-1	比例	第 1 张
					设计	周子杰	核		主电路图		标准	CE	共 5 张	
					校对		准				机器电压	3φ230V		
标记	更改前	更改后	更改人	日期	审核		日期	20220523			机器频率	50Hz		

**SHINI** 信易電熱機械股份有限公司  
Shini Plastics Technologies, Inc.



机型版本 Ver.F

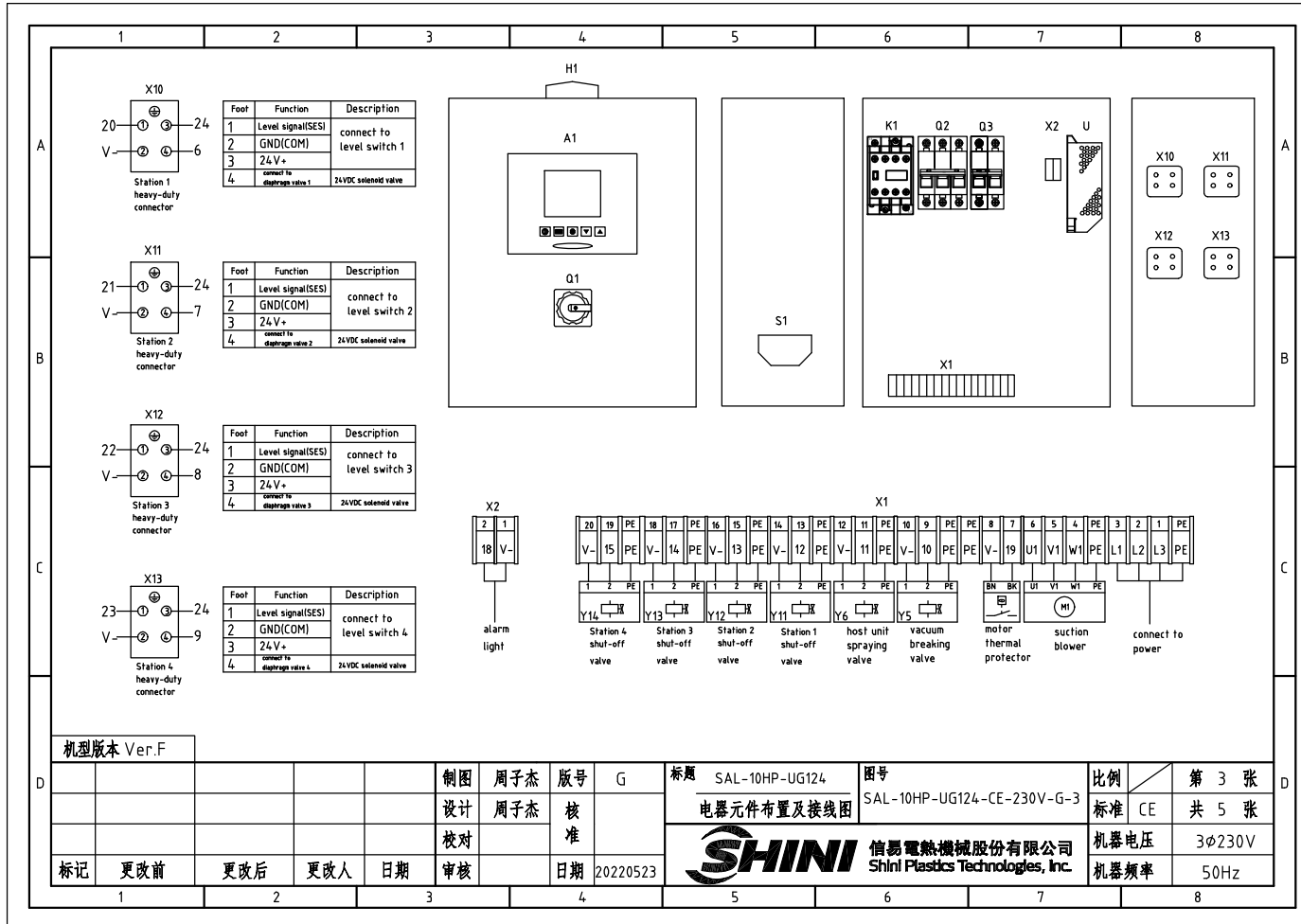
制图	周子杰	版号	G
设计	周子杰	核	
校对		准	
标记	更改前	更改后	更改人
			日期
			日期

标题 SAL-10HP-UG124  
控制电路图

图号 SAL-10HP-UG124-CE-230V-G-2  
SHINI 信易电热机械股份有限公司  
Shini Plastics Technologies, Inc.

比例	第 2 张
标准	共 5 张
机器电压	3φ230V
机器频率	50Hz

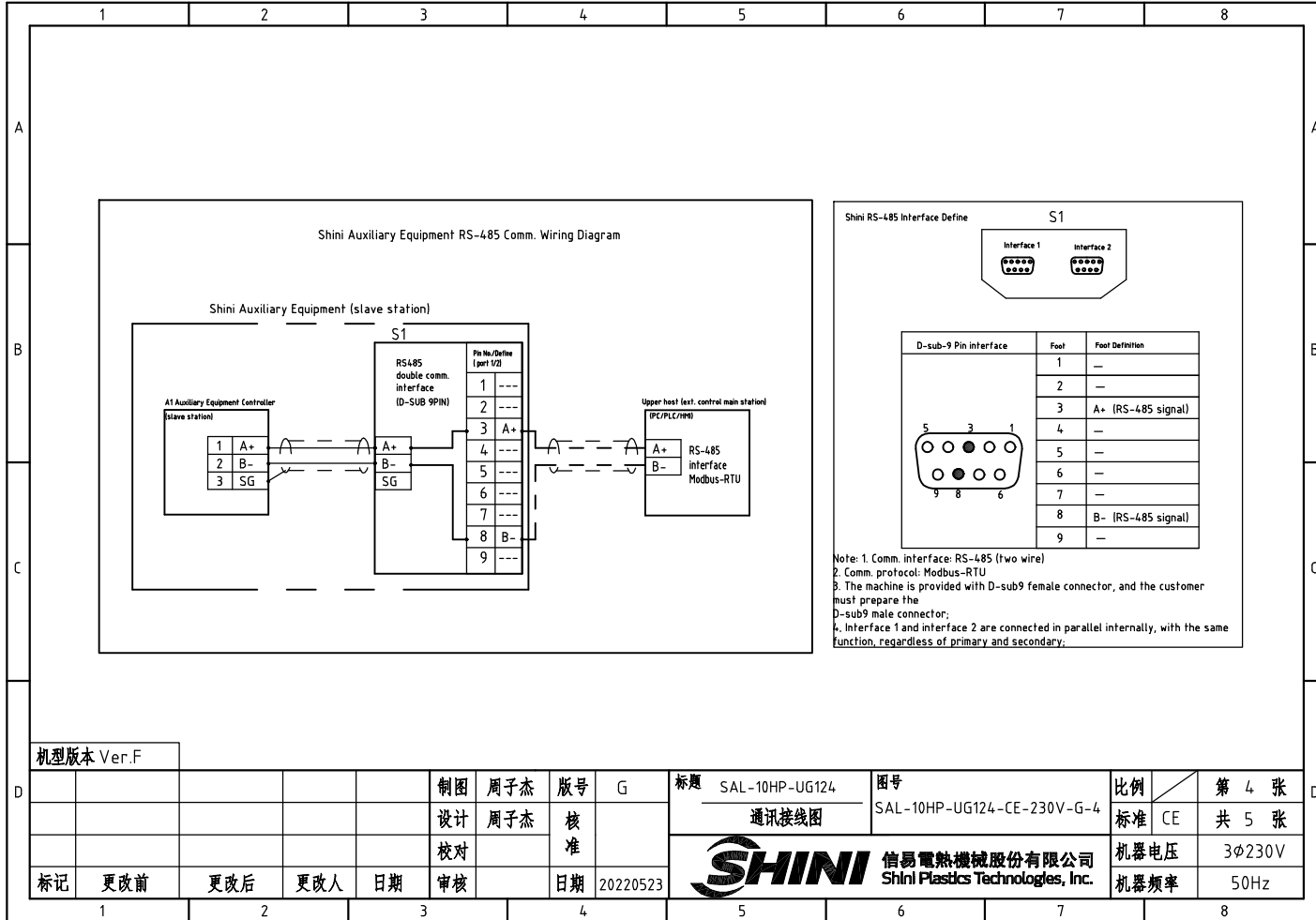
1	2	3	4	5	6	7	8
---	---	---	---	---	---	---	---



机型版本 Ver.F

				制图	周子杰	版号	G	标题	SAL-10HP-UG124	图号	SAL-10HP-UG124-CE-230V-G-3	比例	第 3 张
				设计	周子杰	核准		电器元件布置及接线图				标准	CE 共 5 张
				校对		日期	20220523	<b>SHINI</b>	信易電熱機械股份有限公司 Shini Plastics Technologies, Inc.		机器电压	3φ230V	
标记	更改前	更改后	更改人	日期	审核	日期	20220523	机器频率			50Hz		





机型版本 Ver.F

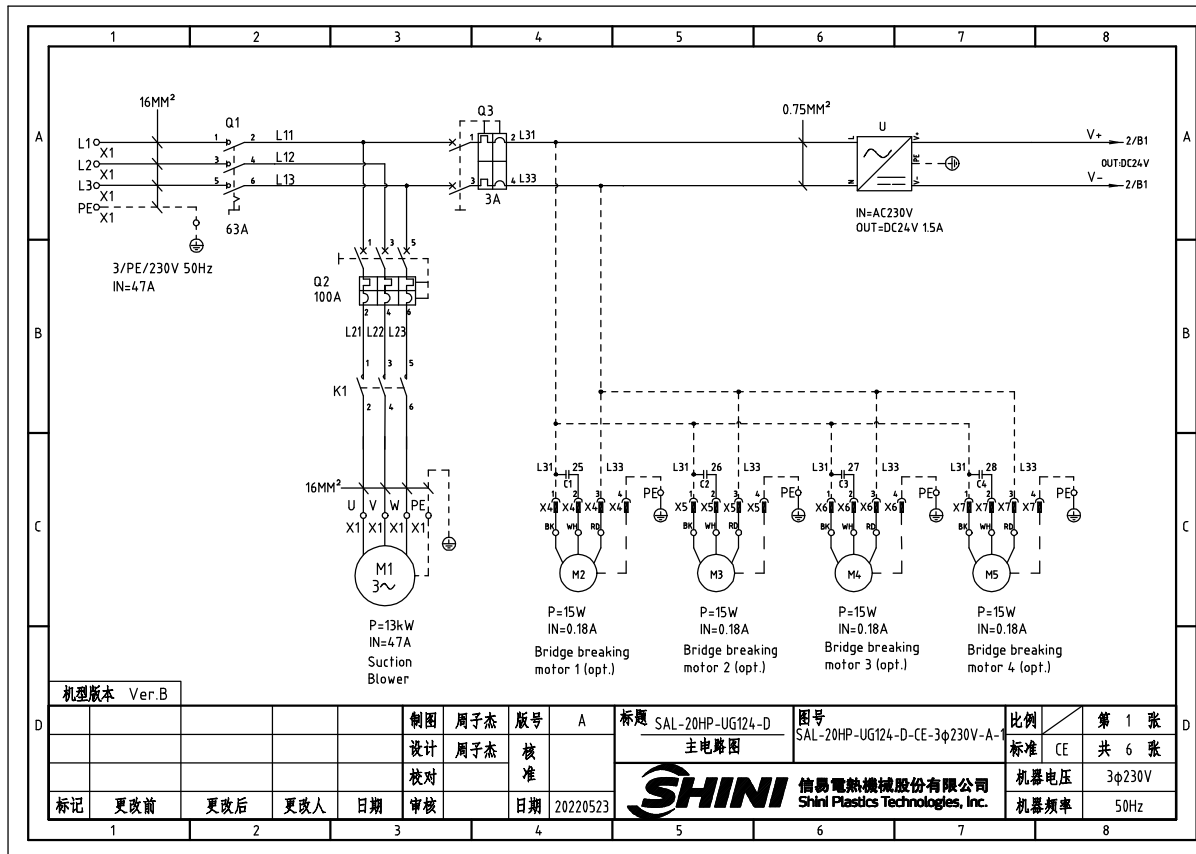
制图	周子杰	版号	G	设计	周子杰	核准	
校对		日期	20220523	审核		日期	
标记	更改前	更改后	更改人	日期			

标题 SAL-10HP-UG124  
 图号 SAL-10HP-UG124-CE-230V-G-4  
 通讯接线图



比例	第 4 张
标准	CE 共 5 张
机器电压	3φ230V
机器频率	50Hz

1		2		3		4		5		6		7		8	
NO	Symbol	Name		Manufacturer		Type		Specification		Number	Material number		Remark		
1	Q1	Main power switch		EATON		P3-63/EA/SVB		63A		1	YE10636300000				
2	Q2	Circuit breakers		TECO		BM-100D/3100S		100A		1	YE40310003000				
3	Q3	Circuit breakers		TECO		BM-63C/2003S		3A 2P		1	YE40200203000				
4	K1	Contactors		SIEMENS		3RT6028-1BB40		24VDC		1	YE00602800600				
5	A1	Controller		YUYUN		CS4		24VAC/DC		1	YE80042401200				
6	S1	RS-485 comm. interface		YUYUN		---		Dsub-9pin connector		1	YE90048501200				
7		Shell RS-485 (SAL-7006-A-19) ver.0		---		---		---		1	YR40048500000				
8		9-pin serial port connector (male), including housing and screws		---		---		---		1	YE62090000000				
9	H1	Alarm light		HONGYUN		red, yel, gre, + buzzer		24VAC/DC		1	BL90000011520				
10	U	DC power		---		S-35-24		24VDC 1.5A		1	YE71352400000				
11	X1 X2	Wiring terminal		HONEYWELL		GK6		6.0mm <sup>2</sup>		6	YE60000603200				
12		Wiring terminal		HONEYWELL		GK6PE		6.0PE		2	YE60000603500				
13		Wiring terminal		HONEYWELL		SK2.5		2.5mm <sup>2</sup>		16	YE60002503200				
14		Wiring terminal		HONEYWELL		GK2.5PE		2.5PE		7	YE60002503400				
15		Terminal fittings E/GK series (honeywell)		HONEYWELL		---		PCS		6	YE60000003900				
16	X10~X13	Heavy duty connectors		HARTING		Han E-4F(母)		4P		4	YE680004014.00				
17	M	Blower		RuiJing		RB-850		10HP 230V 50HZ		1	---		(1)		
18	Y1~Y6	Solenoid valve		AIRTAC		---		24VDC		6	---		(1)		
19	Y11~Y14	Solenoid valve		AIRTAC		---		24VDC		4	---		(1)		
20	S2~S5	Photosensor switch		FOOTEK		MT-4MNO-30VDC		10...30VDC		4	---		(1) SVH		
21		Reed switch		SONON		BN12-30BLA		24VDC		4	---		SMH		
机型版本 Ver.F		Note: (1) Materials not mounted in the control box;													
D					制图	周子杰	版号	G	标题	SAL-10HP-UG124/SAL-10HP-UG124-D	图号	SAL-10HP-UG124-CE-230V-G-5	比例	第 5 张	
					设计	周子杰	核		电气元件明细表一			标准	CE	共 5 张	
					校对		准								
	标记	更改前	更改后	更改人	日期	审核		日期	20220523			信易電熱機械股份有限公司 Shini Plastics Technologies, Inc.		机器电压	3φ230V
													机器频率	50Hz	



机型版本 Ver.B

D					制图	周子杰	版号	A
					设计	周子杰	核	
					校对			
标记	更改前	更改后	更改人	日期	审核		日期	20220523

标题 SAL-20HP-UG124-D  
主电路图

图号 SAL-20HP-UG124-D-CE-3φ230V-A-

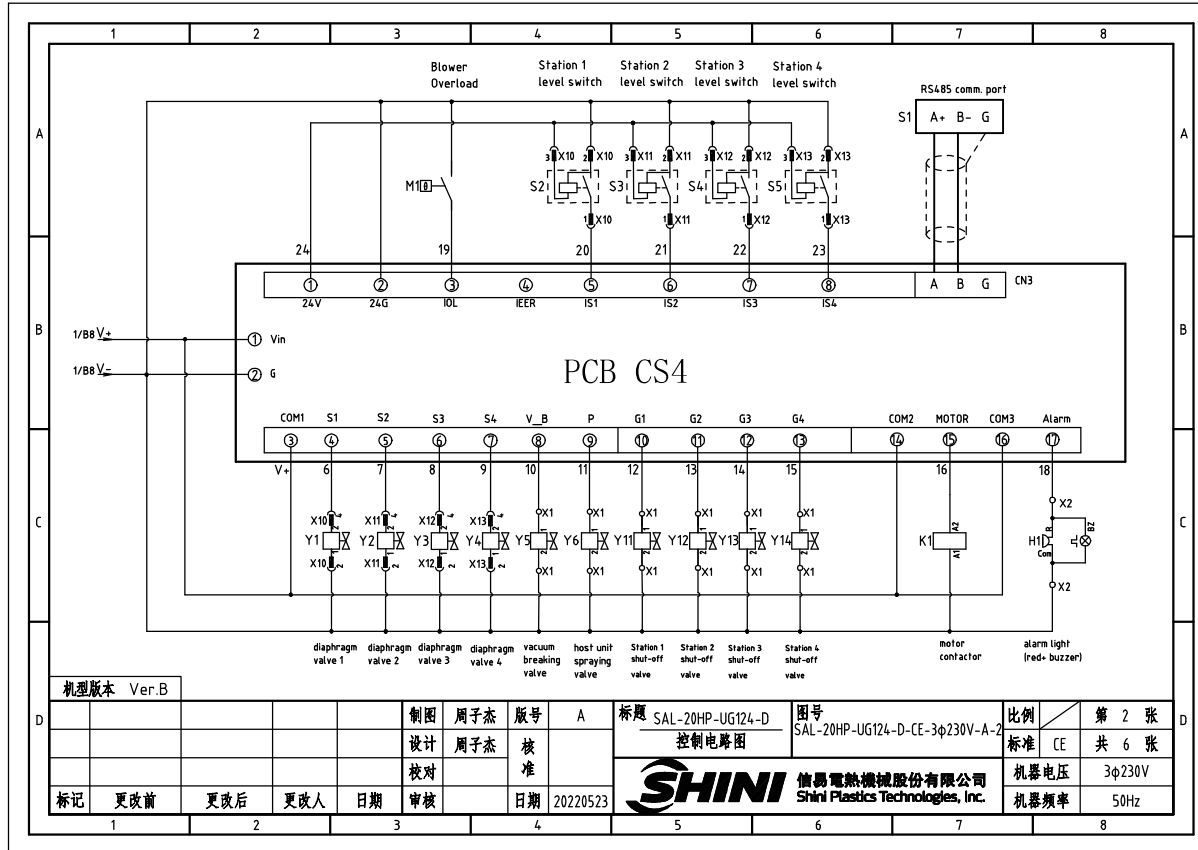
比例 第 1 张

标准 CE 共 6 张

机器电压 3φ230V

机器频率 50Hz





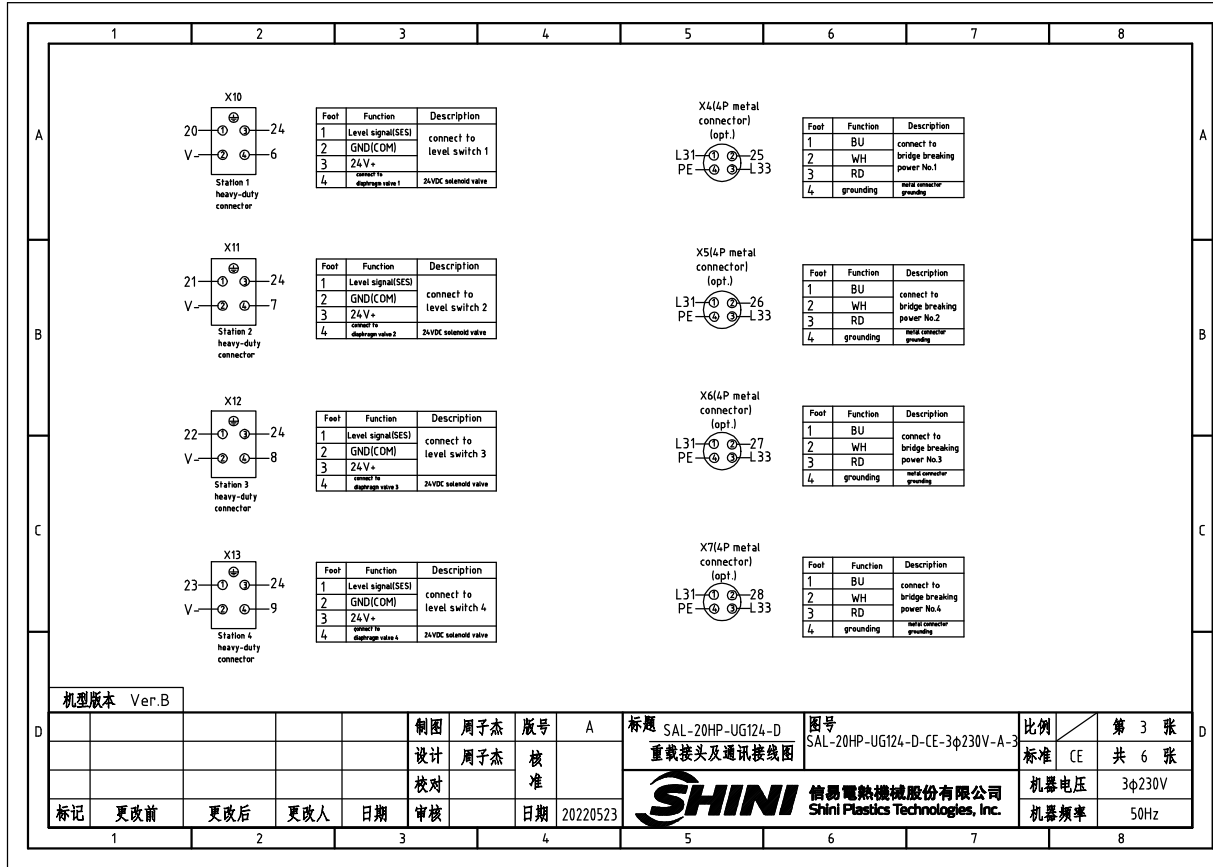
机型版本 Ver.B

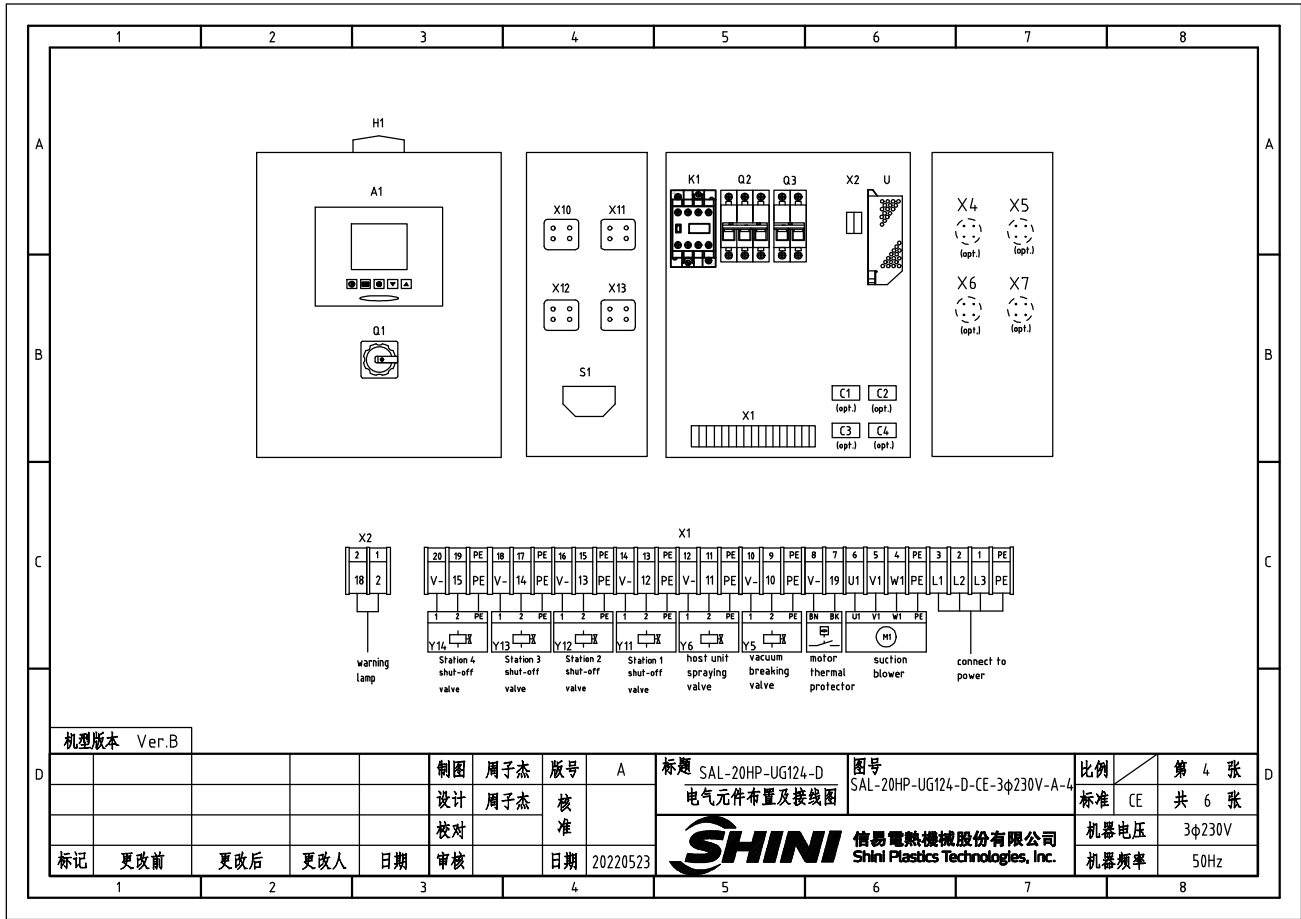
制图	周子杰	版号	A
设计	周子杰	核	
校对		准	
审核		日期	20220523

标题	SAL-20HP-UG124-D 控制电路图	图号	SAL-20HP-UG124-D-CE-3φ230V-A-2
----	---------------------------	----	--------------------------------

比例	第 2 张
标准	CE 共 6 张
机器电压	3φ230V
机器频率	50Hz







机型版本 Ver.B

制图	周子杰	版号	A
设计	周子杰	核准	
校对		审核	
标记	更改前	更改后	更改人
	日期	日期	20220523

标题 SAL-20HP-UG124-D  
 电气元件布置及接线图  
 图号 SAL-20HP-UG124-D-CE-3φ230V-A-4  
**SHINI** 信易电热机械股份有限公司  
 Shini Plastics Technologies, Inc.

比例	第 4 张
标准	CE 共 6 张
机器电压	3φ230V
机器频率	50Hz



1	2	3	4	5	6	7	8		
NO	Symbol	Name	Manufacturer	Type	Specification	unit	Number	Material number	Remark
1	Q1	Main power switch	EATON	P1-32/EA/SVB	63A	PCS	1	YE10636300000	
2	Q2	Circuit breakers	TECO	FBBM-100D/3100T	100A	PCS	1	YE40310003000	
3	Q3	Circuit breakers	TECO	BM-63C/2003S	3A 2P	PCS	1	YE40200203000	
4	K1	Contactors	SIEMENS	3RT5044-1BB40	24VDC	PCS	1	YE00504400600	
5	A1	Controller	YUYUN	CS4	24VAC/DC	PCS	1	YE80042401200	
6	S1	RS-485 comm. interface	YUYUN	---	Dsub-9pin connector	PCS	1	YE90048501200	
7		Shell RS-485 (SAL-700G-A-19) ver.0	---	---	---	PCS	1	YR40048500000	
8		9-pin serial port connector (male), including housing and screws	---	---	---	PCS	1	YE62090000000	
9	H1	Alarm light	SHINI	red, yel, gre, + buzzer	24VAC/DC	PCS	1	BL90000011520	
10	U	DC power	MEAN WELL	LRS-35-24	24VDC 1.5A	PCS	1	YE71352400100	
11	X1 X2	Wiring terminal	HONEYWELL	SK16	16mm <sup>2</sup>	PCS	6	YE60000603200	
12		Wiring terminal	HONEYWELL	GK16PE	16mm <sup>2</sup> PE	PCS	2	YE60000603500	
13		Wiring terminal	HONEYWELL	SK2.5	2.5mm <sup>2</sup>	PCS	16	YE60002503200	
14		Wiring terminal	HONEYWELL	GK2.5PE	2.5mm <sup>2</sup> PE	PCS	6	YE60002503400	
15		Terminal fittings E/GK series (honeywell)	HONEYWELL	---	---	PCS	4	YE60000003900	
16	X10~X13	Heavy duty connectors	HARTING	Han E-4F(socket)	4P	PCS	4	YE68000401400	
17	M1	Blower	ShengHong	EHS-4337(thermal insulation)	20HP 230V 50HZ	PCS	1	---	(1)
18	Y1~Y6	Solenoid valve	AIRTAC	---	24VDC	PCS	6	---	(1)
19	Y11~Y14	Solenoid valve	AIRTAC	---	24VDC	PCS	4	---	(1)
20	S2~S5	Photosensor switch	FOTEK	MT-4MNO-30VDC	10...30VDC	PCS	4	---	(1) SVH
21		Reed switch	SONON	BN12-30BLA	24VDC	PCS	4	---	(1) SMH
22	X4 X5 X6 X7	Heavy-duty connectors	----	PLT-254-RF	4P(socket)	PCS	4	YE68025400100	(2)
23	M2 M3 M4 M5	Bridge breaking motor	----	----	230V 50/60Hz 0.015KW	PCS	4	----	(2)
24	C1 C2 C3 C4	Operating capacitance	----	----	----	PCS	4	----	(2)
25									
机型号 Ver.B Note: (1) Materials not mounted in the control box; (2) Optional bridge breaking motor;									
			制图	周子杰	版号	A	标题 SAL-20HP-UG124-D 电气元件明细表一		图号 SAL-20HP-UG124-D-CE-3φ230V-A-0
			设计	周子杰	核准		比例	CE	第 6 张 共 6 张
			校对				标准	CE	
标记 更改前 更改后 更改人 日期			审核		日期	20220523	SHINI 信易电热机械股份有限公司 Shini Plastics Technologies, Inc.		机器电压 3φ230V 机器频率 50Hz
1	2	3	4	5	6	7	8		