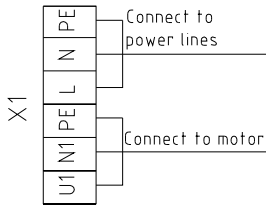
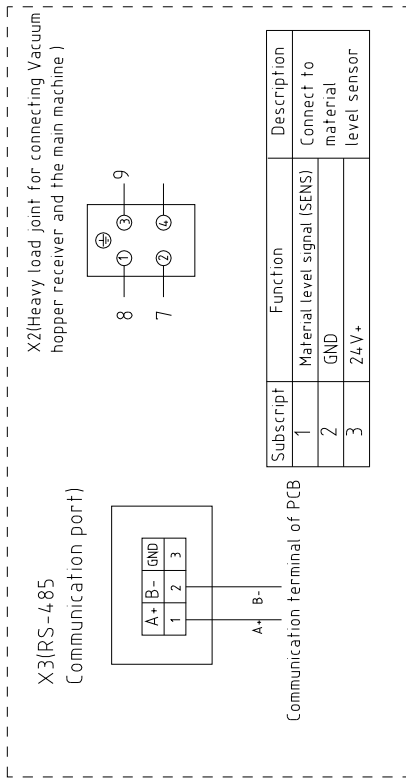
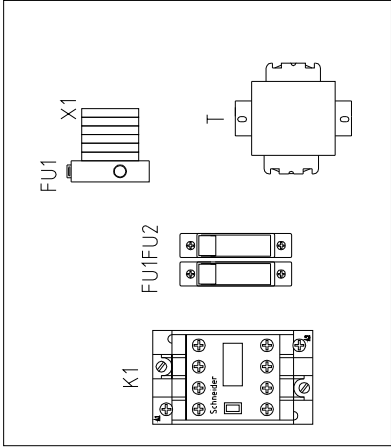
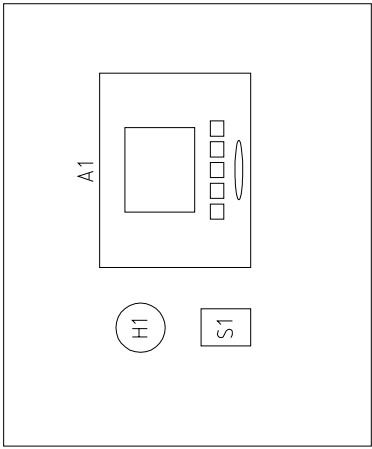


版本 Ver E


D	Mark	Before modification	Modified by	20180827	Checked by	20180827	Date	20180827	Approved by	Version	D	Title	SAL-700G Main Circuit Diagram		Drawing No	SAL-700G-CE-230V-D-1		Scale	Standard	CE	Page	1	Totally	3	Pages
	After modification	Modified by	20180827	Checked by	20180827	Date	20180827	Approved by	Version	D	Title	SAL-700G Main Circuit Diagram		Drawing No	SAL-700G-CE-230V-D-1		Scale	Standard	CE	Page	1	Totally	3	Pages	
Voltage		1/230V																							
Frequency		50/60HZ																							

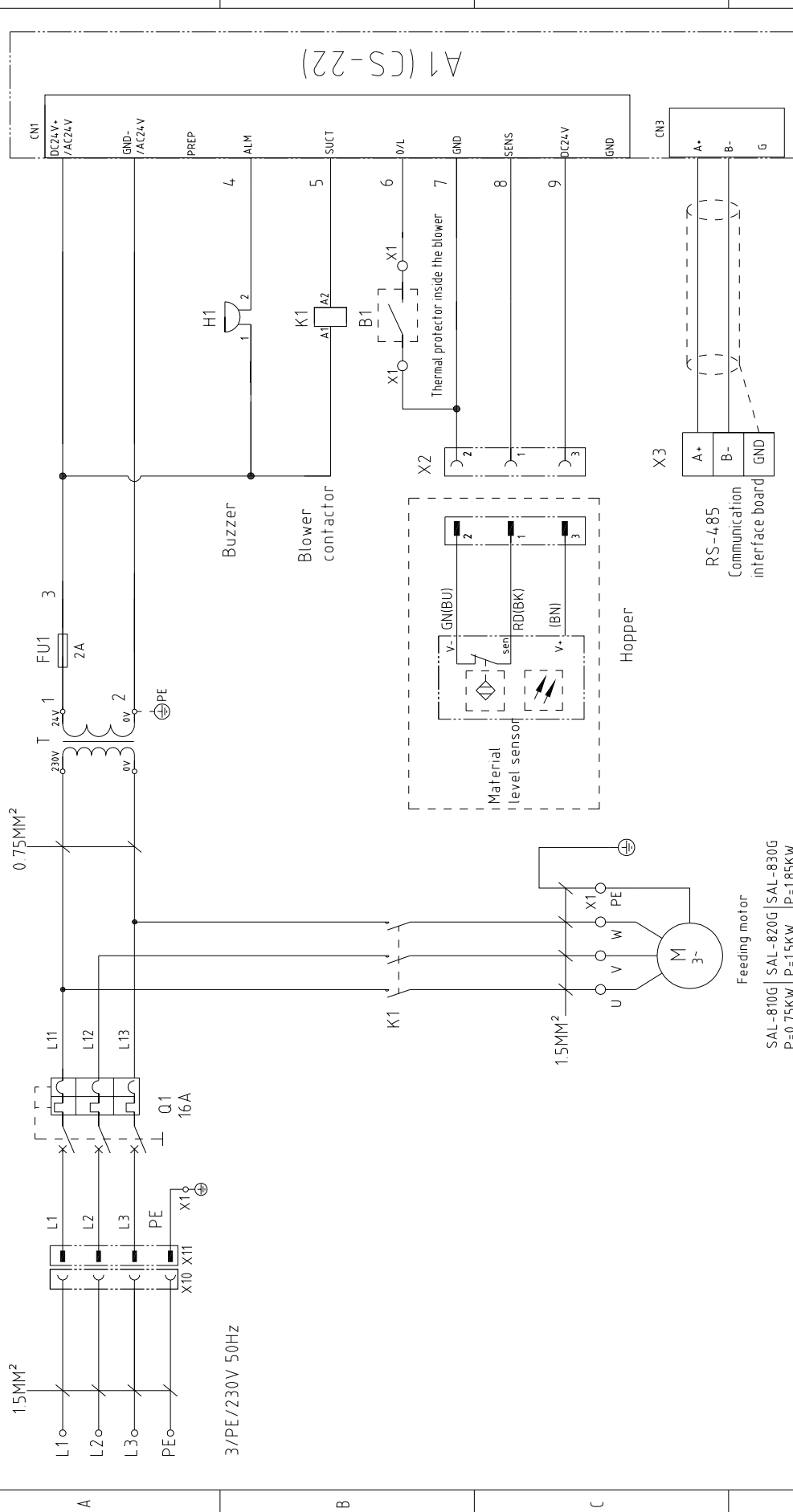


信易電熱機械股份有限公司
Shini Plastics Technologies, Inc.



版本 Ver E

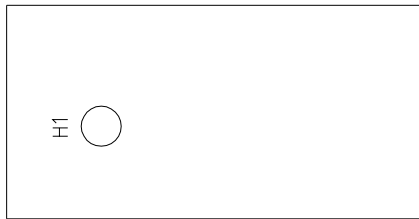
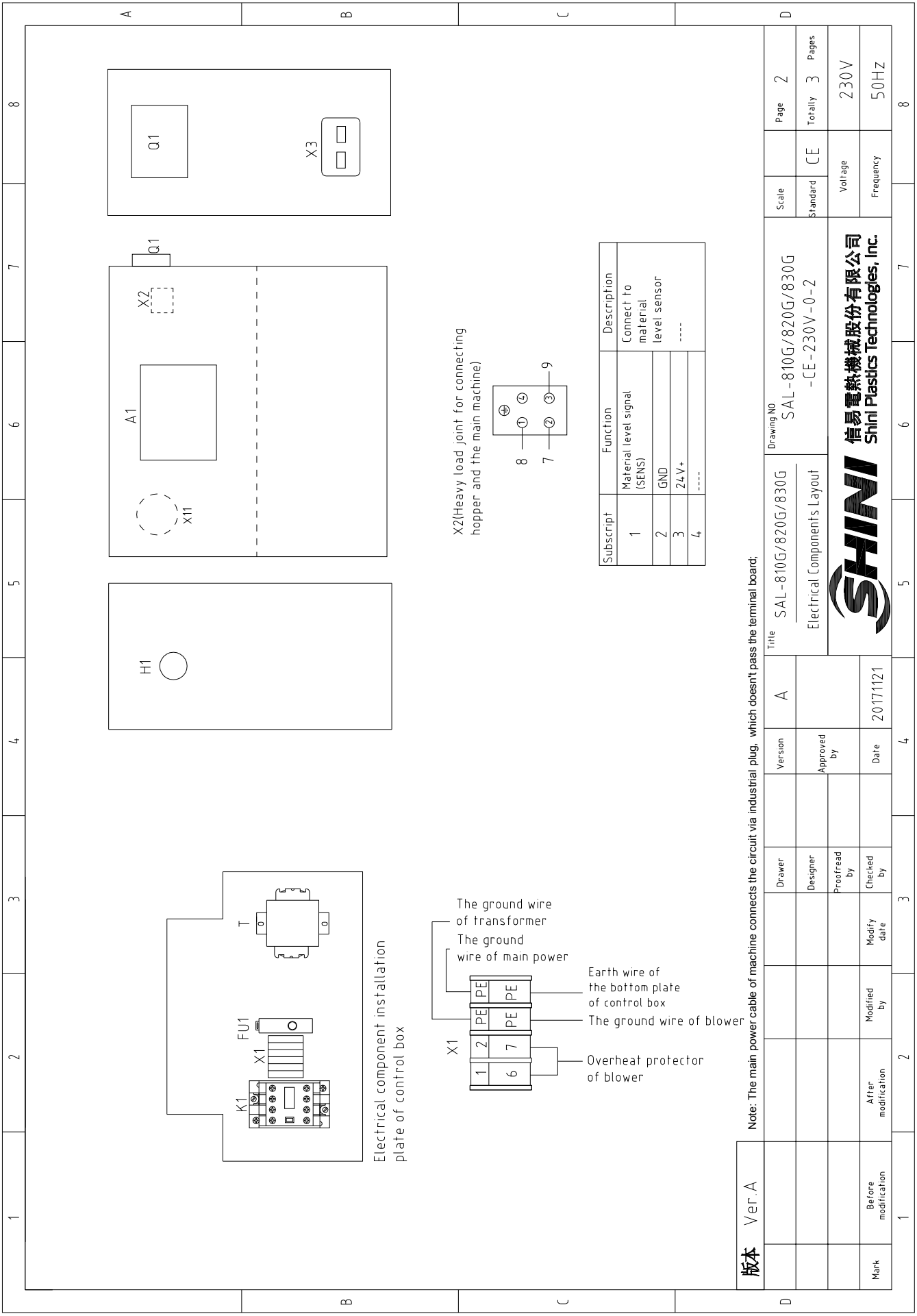
D	Drawer	Version	Title	Drawing NO	Scale	Page
	Designer	Approved by	SAL-700G	SAL-700G-CE-230V-D-2	Standard	2
	Proofread by		Electrical Components Layout	CE	Totally	3
Mark	Modified by	Date		Voltage	Frequency	Pages
	After modification	20180827		1/230V	50/60HZ	
	Before modification					
1	2	3	4	5	6	7
 <p>信易電熱機械股份有限公司 Shini Plastics Technologies, Inc.</p>						
8						



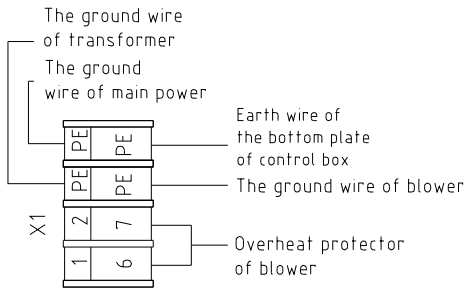
版本	Ver. A	Title	SAL-810G/820G/830G		Drawing NO	SAL-810G/820G/830G		Page	1
			Main Circuit Diagram			-CE-230V-0-1			Standard
Mark	Before modification	Checked by	Date	20171121	Version	Approved by	Voltage	230V	
	After modification							Checked by	Date
SHINI		信易電熱機械股份有限公司		Shini Plastics Technologies, Inc.		Voltage			
						Frequency		50HZ	8

Feeding motor
 SAL-810G | SAL-820G | SAL-830G
 P=0.75KW | P=1.5KW | P=1.85KW
 IN=3.9A | IN=6.5A | IN=7.0A

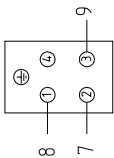




Electrical component installation plate of control box



X2(Heavy load joint for connecting hopper and the main machine)



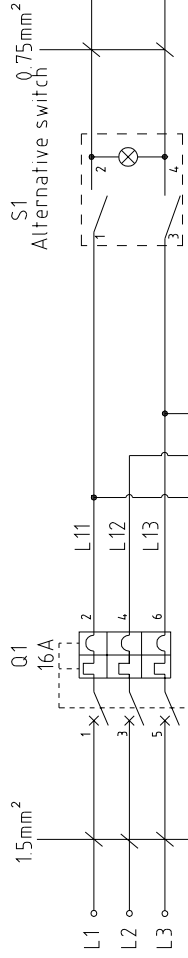
Subscript	Function	Description
1	Material level signal (SENS)	Connect to material level sensor
2	GND	-----
3	24V+	-----
4	-----	-----

版本	Ver. A
Mark	Before modification
	After modification
	Modified by
	Modify date
	Checked by
	Proofread by
	Designer
	Drawer
	Version
	Approved by
	Date
	20171121

Note: The main power cable of machine connects the circuit via industrial plug, which doesn't pass the terminal board.

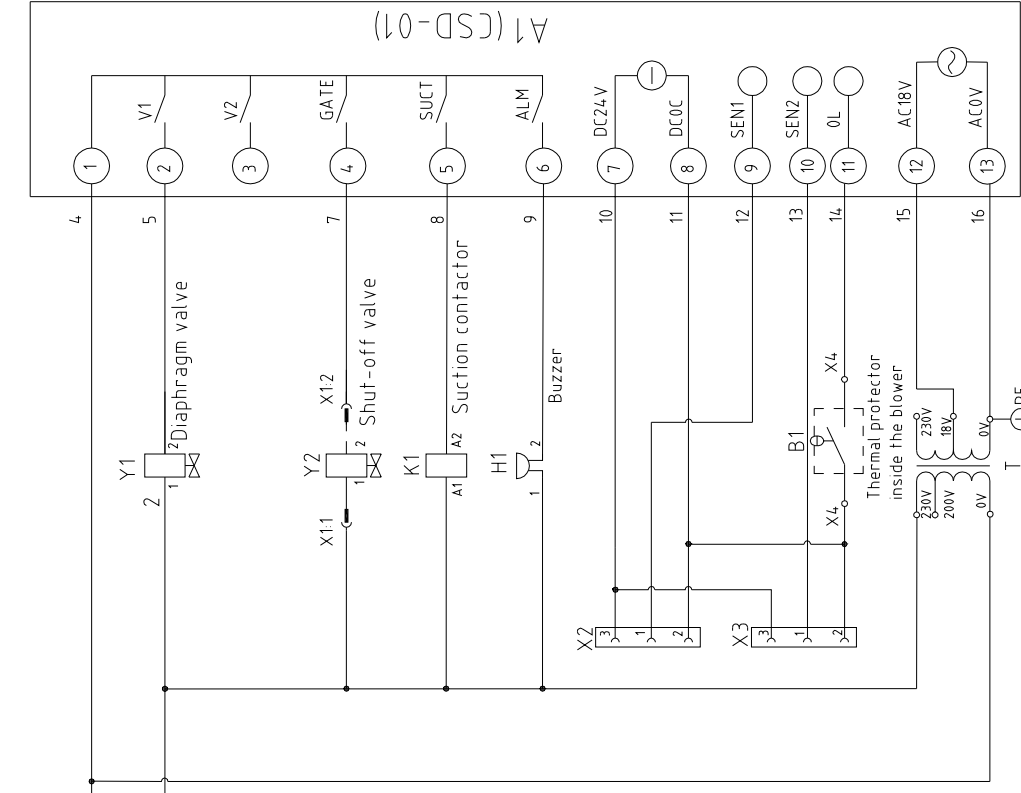
Title		SAL-810G/820G/830G		SAL-810G/820G/830G		Page		2	
Drawing NO		Electrical Components Layout		Standard		Scale		CE	
						Voltage		230V	
						Frequency		50HZ	
						Totally		3	
						Pages		8	





3/PE/230V 50Hz
 IN=3.9A SAL-900G
 IN=6.7A SAL-900G2

Feeding motor
 SAL-900G | SAL-900G2
 P=0.75KW | P=1.5KW
 IN=3.9A | IN=6.7A

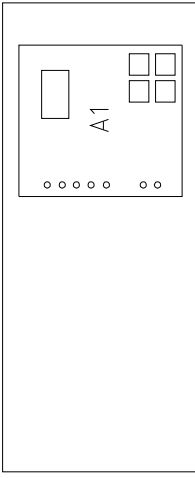


版本 Ver.C

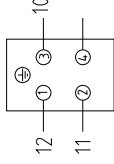
Mark	Before modification	Modified by	Date	20180824
	After modification	Modified by	Date	
Designer	Designer	Proofread by	Checked by	
	Designer	Proofread by	Checked by	
Version	Version	Approved by	Date	
	Version	Approved by	Date	
Title	SAL-900G/900G2	SAL-900G/900G2-CE		
	Main Circuit Diagram	-230V-C-1		

Scale	Standard	CE	Page	1
	Standard	CE	Totally	3 Pages
Voltage	Voltage		230V	
	Frequency		50HZ	

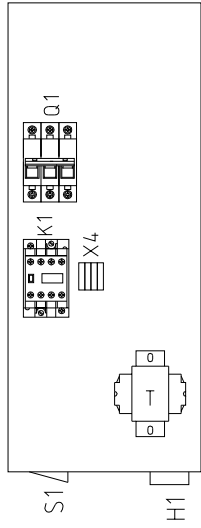




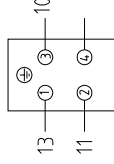
X2(Heavy load joint for connecting vacuum hopper receiver and the main machine)



Subscript	Function	Description
1	Material level signal (SENS)	Connect to material level sensor
2	GND	
3	24V+	
4	----	----

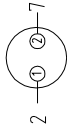


X3(Heavy load joint for connecting photosensor hopper receiver and the main machine)

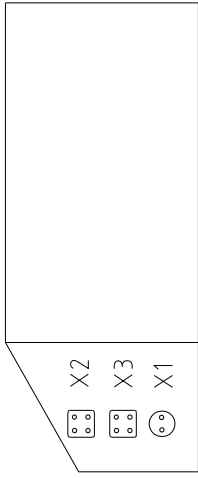


Subscript	Function	Description
1	Material level signal (SENS)	Connect to material level sensor
2	GND	
3	24V+	
4	----	----

X1(Connect to shut-off valve)



Subscript	Function	Description
1	GND	Connect to
2	24V+	shut off valve



Connect the ground wire of X2 heavy-duty connector
 Connect to the ground wire of transformer
 Connect the ground wire of motor
 X4
 PE
 PE
 PE
 11
 14
 Connect the ground wire of X3 heavy-duty connector
 Connect to electrical component installation plate
 Connect to ground wire of main power
 Connect to motor internal overheat protector

Technical requirements: (1) Main power inlet directly connects to breaker interlock without passing by terminal board (2) Motor cable is directly connected to the contactor without connecting the terminal board

版本 Ver.C

Mark	Before modification	Modified by	Modify date	Checked by	Date
					20180824

Version	C	Version	C

Drawer	Designer	Proofread by	Approved by

Title	SAL-900G/900G2	Electrical Components Layout

Scale	Standard	CE

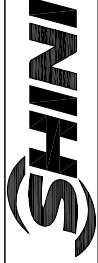
Page	2	Page	2

Standard	CE	Totally	3

Voltage	230V


Frequency	50HZ

Drawing NO SAL-900G/900G2-CE
 -230V-C-2



1	2	3	4	5	6	7	8	
N0	Symbol	Name	Manufacturer	Type	Specification	Number	Material number	Remark
1	Q1	Circuit breakers	TECO	BM-63C/3016S	16A	1	YE40301603000	
2	K1	AC Contactors	SCHNEIDER	LC1-D09M7C	230V 50/60HZ	1	YE00109700100	
A	T	Transformer	JIUXIN	IN=200V/230V, OUT=230V/18V	500mA	1	YE702023004.00	
4	A1	Circuit board	YUYUN	CSD-01	18VAC 50/60HZ	1	YE80101100000	
5	S1	Alternative switch	REAB	R210-C5LBW	4P (WH)	1	YE102104.00000	
6	Y1	Solenoid valve	----	----	230V 50/60HZ	1	----	(1)
7	Y2	Solenoid valve	----	----	230V 50/60HZ	1	----	(1)
8	H1	Buzzer	SHINI	PF-35A	220V AC/DC	1	YE84.003500000	
9	X1	Metal connector	APEX	PLT-252-R	250V 10A 2P	1	YE68025200300	(1)
10	X2 X3	Heavy duty connector	HARTING	Han E-4F(母)	4P	2	YE680004.014.00	(1)
11	X4	Terminal block	HONEYWELL	2.5mm ²	PCS	2	YE6125004.0000	
12		Terminal block	HONEYWELL	2.5mm ² PE	PCS	3	YE6125004.0000	
13		Terminal fittings E/GKseries	HONEYWELL	----	PCS	2	YE60000003900	
14	M1	Motor	----	0.75KW(Overheat protector provided)	----	1	----	(1)SAL-900G
15		Motor	----	15KW(Overheat protector provided)	----	1	----	(1)SAL-900G2
16	B1	Overheat protector	----	----	----	1	----	
17								
C								

版本 Ver.C Note: (1) Means not part of control box.

D	Drawing NO	Title	Version	C	Scale	Page	3
	SAL-900G/900G2	SAL-900G/900G2-CE			Standard	Totally	Pages
	Electrical Components List	-230V-C-3	Approved by		CE	3	3
		 信易电热机械股份有限公司 Shini Plastics Technologies, Inc.		Voltage		230V	
Mark		Before modification	Modified by	Modify date	Frequency		50HZ
1	2	3	4	5	6	7	8