

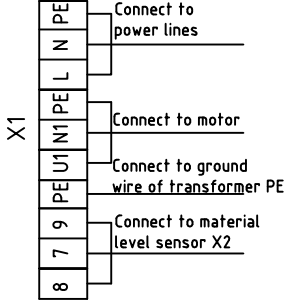
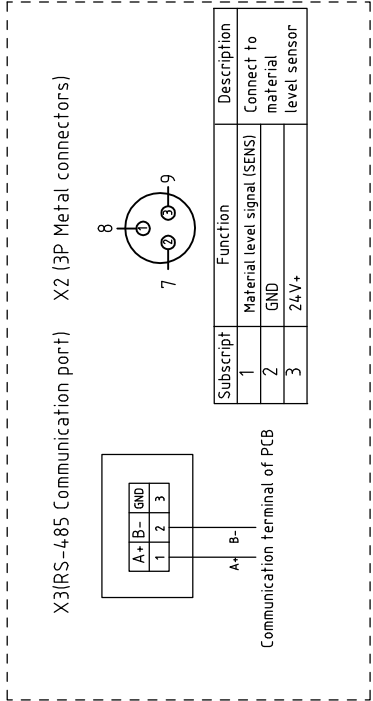
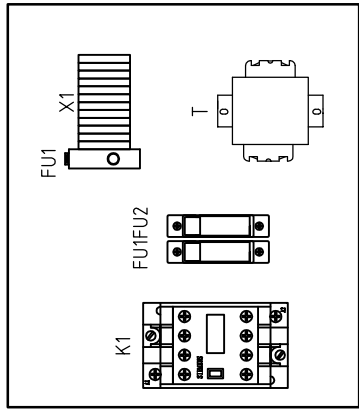
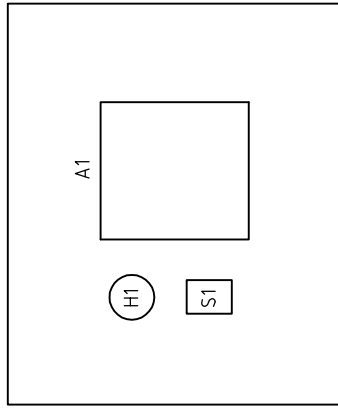
A1 (CS-22)

版本 Ver.D

Title		SAL-700G		Drawing No.		Page 1	
Version		Main Circuit Diagram		Standard		CE	
Designer		SHINI		Voltage		1/230V	
Proofread by		信易塑料机械股份有限公司 Shini Plastics Technologies, Inc.		Frequency		50/60HZ	
Checked by		20180801		Totally		3	
Modified by		Date		Pages		8	
After modification		Date		Voltage		1/230V	
Before modification		Date		Frequency		50/60HZ	

1 2 3 4 5 6 7 8

A B C D



版本 Ver.D

Mark	Before modification	Modified by	Modify date	Checked by	Date	20180801	Title	SAL-700G	Drawing NO.	SAL-700G-CE-230V-C-2	Electrical Components Layout	Standard	Scale	Page
	After modification	Modified by	Modify date	Checked by	Date	CE							2	
											Voltage	1/230V		
											Frequency	50/60HZ		
											Totally	3		
											Pages	8		




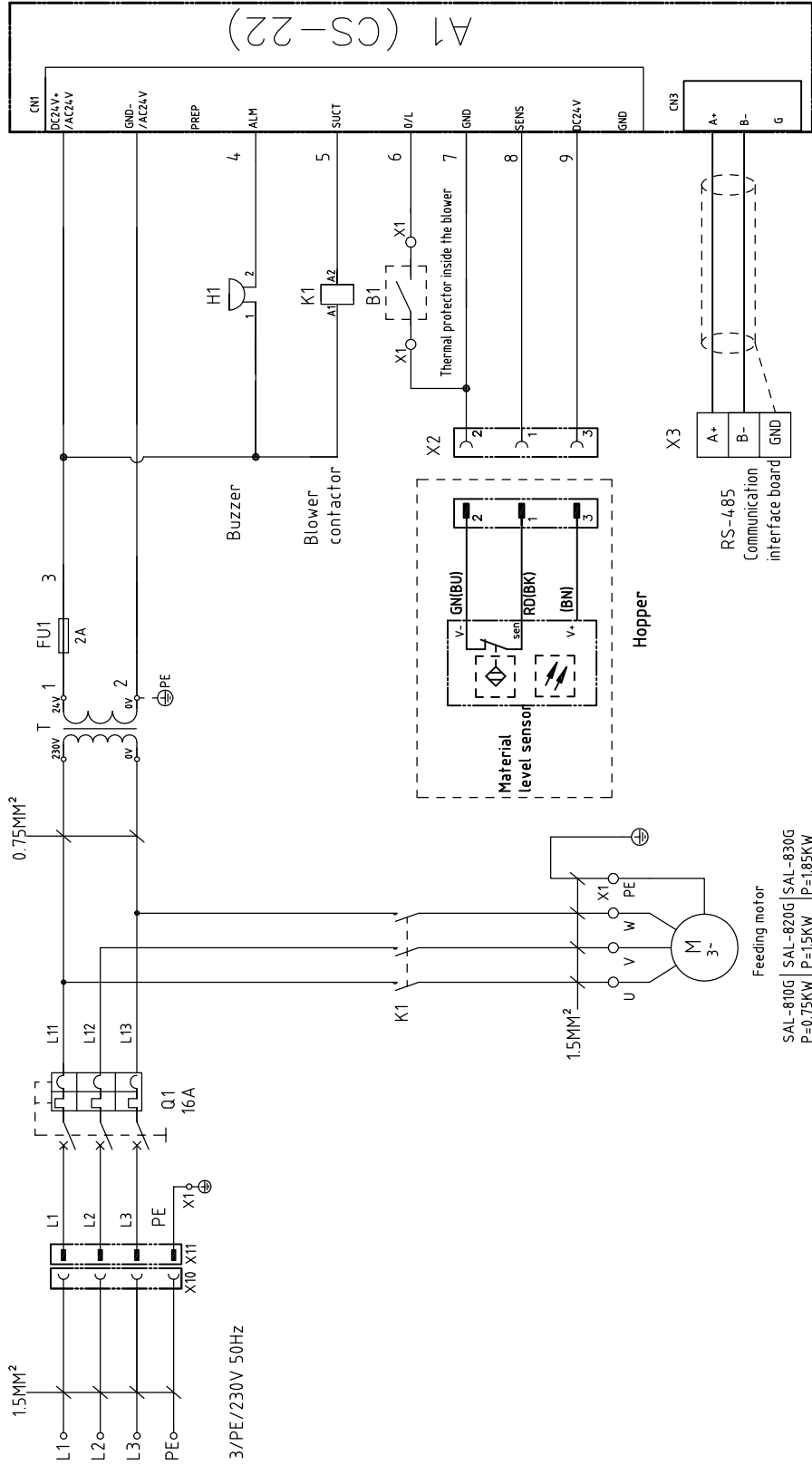
1 2 3 4 5 6 7 8

A B C D

1	2		3	4	5	6	7	8
NO.	Symbol	Name	Manufacturer	Type	Specification	Number	Material number	Remark
1	FU1FU2	Fuse base	MRO	RT14-20	1P	2	YE4.114.2000000	
2		Fuse core	MRO	10x38 500V	10A	2	YE4.6010000100	
3	FU3	Fuse base	---	FS-10	250V 2A	1	YE4.1001000000	A
4	K1	Contactors	Schneider	LC1-D09B7C	24V 50/60Hz	1	YE00972400000	
5	T	Transformer	---	IN=230V OUT=24V	80VA	1	YE70248005900	
6	H1	Buzzer	---	PK-35A	24VAC/DC	1	YE84.003500600	
7	A1	Circuit board	YUYUN	CS-22(Include communication)	24VAC/DC	1	YE80222400600	
8		Control box SSMD ABS+PC(30%)	SHINI	---	PCS	1	YR4.04.00200000	
9		Pressing plate of display screen(88x53x1.010)	SHINI	---	PCS	1	YR90000003300	
10		Lampshade(SIC-015)	SHINI	---	PCS	1	YR9044.1300000	
11		Panel SAL-G 2015 >65N	SHINI	---	PCS	1	YR01105500000	B
12	S1	Control switch	---	R210-C5LBW	4P	1	YE10210400000	
13	X1	Terminal board	Honeywell	SK2.5	2.5mm ²	7	YE60002503200	
14			Honeywell	GK2.5PE	2.5mm ² PE	3	YE600025034.00	
15	X2	Metal connectors	APEX	DF-25-3FR	3P	1	----	(1)
16	X3	RS-485communication interface board	YUYUN	RS-485	---	1	YE9004.8501200	(1)
17		Shell RS485(SAL-700G-A-1910)	---	---	PCS	1	YR4.004.8500000	(1)
18	M	Blower	AMETEK	1.2KW	240V 50/60Hz	1	----	(1)
C								
D								

版本 Ver.D Notes: (1)Means it's not the material inside the control box.

Title		Drawing NO.		Scale		Page	
SAL-700G		SAL-700G-CE-230V-C-3		Standard CE		Totally 3	
Electrical Components List		Voltage		Frequency		1/230V	
						50/60Hz	
 信易塑料机械股份有限公司 Shini Plastics Technologies, Inc.		Date		Voltage		Frequency	
20180801		20180801		1/230V		50/60Hz	
1		2		3		4	
5		6		7		8	



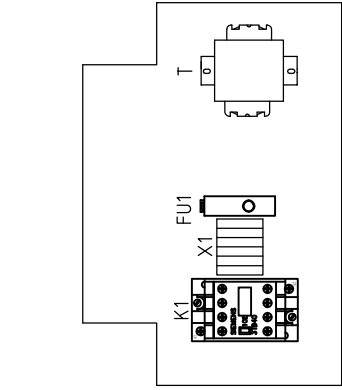
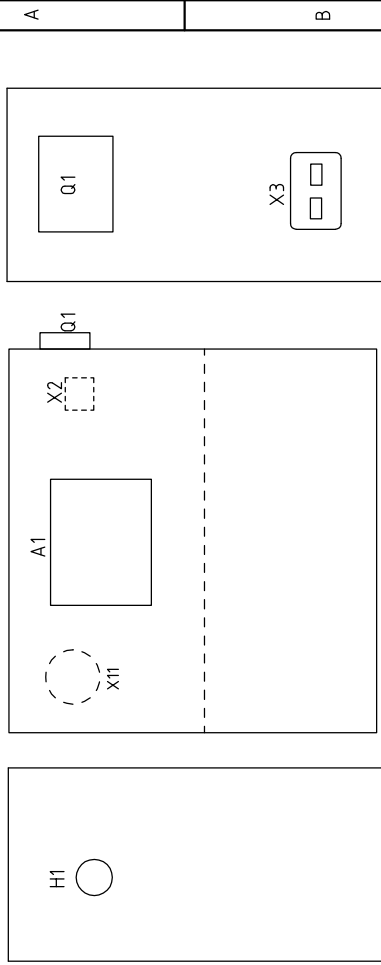
版本 Ver.A

Feeding motor
 SAL-810G | SAL-820G | SAL-830G
 P=0.75KW P=1.5KW P=1.85KW
 IN=3.9A IN=6.5A IN=7.0A

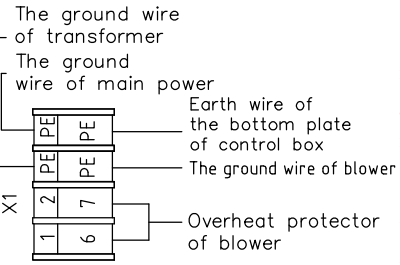
Mark	Before modification	After modification	Modified by	Modify date	Checked by	Date	20171121
Designer							
Proofread by							
Approved by							
Version	A						
Title	SAL-810G/820G/830G		Drawing NO.		SAL-810G/820G/830G		
Main Circuit Diagram		Scale		Standard		CE	
		Voltage		Frequency		230V 50Hz	
		Page		Totally		3 Pages	



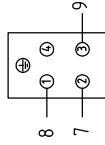
1 2 3 4 5 6 7 8



Electrical component installation plate of control box



X2(Heavy load joint for connecting hopper and the main machine)



Subscript	Function	Description
1	Material level signal (SENS)	Connect to material level sensor
2	GND	----
3	24V+	----
4	----	----

版本 Ver.A

Note: The main power cable of machine connects the circuit via industrial plug, which doesn't pass the terminal board;

Mark	Before modification	Modified by	Modify date	Checked by	Date	Version	A	Title	SAL-810G/820G/830G Electrical Components Layout	Drawing NO.	SAL-810G/820G/830G -CE-230V-0-2	Scale	Page
	After modification											Standard	Totally
					20171121							CE	2
													3
													230V
													50HZ
													8



1	2		3	4	5	6	7	8
NO.	Symbol	Name	Manufacturer	Type	Specification	Number	Material number	Remark
1	X10	Plug	QX	QX-514 4P/16A(Female)	4P/16A	1	YE62051400000	(1)
2	X11	Plug	QX	QX-813 4P/16A(Male)	4P/16A	1	YE62081300000	
3	Q1	Circuit breakers	TECO	BM-63C/3016S	16A	1	YE40301603000	A
4	K1	AC contactors	SIEMENS	3RT6018-1AB01	AC24V	1	YE00601802500	
5	FU1	Fuse base FS-107/6x30/ with 2A core(transparent)	---	FS-101	250V 2A	1	YE41001000000	
6	T	Transformer	---	IN=230V OUT=24V	80VA	1	YE70248005900	
7	H1	Buzzer	---	PK-35A	24-VAC/DC	1	YE84003500600	
8	A1	Circuit board	YUYUN	CS-22	24-VAC/DC	1	YE80222400600	
9	X1	Terminal board	Honeywell	SK2.5	---	2	YE60002503200	
10		Terminal board	Honeywell	GK2.5PE	---	2	YE60002503400	
12	X2	Heavy duty connector	SIBAS	HDC-HA-004.1(Female)	4P	1	YE68041000100	B
13	X3	RS485 Communication interface board	YUYUN	---	---	1	YE90048501200	
14		Shell RS485(SAL-700G-A-19)0	---	---	PCS	1	YR40048500000	
15	M	Motor	SHINI	0.75KW	230V 50Hz	1	---	(1) SAL-810G
16	M	Motor	SHINI	1.5KW	230V 50Hz	1	---	(1) SAL-820G
17	M	Motor	SHINI	1.85KW	230V 50Hz	1	---	(1) SAL-830G
18	B1	Overheat protector	---	---	----	1	---	(1)
C								
D								
版本 Ver.A Notes: (1)Means it's not the material inside the control box.								
				Version	A	Drawing NO. SAL-810G/820G/830G		
Drawer				Designer	Proofread by	Checked by	Modified by	Modify date
Electrical Components List				Approved by	Date	Standard CE		
SHINI				20171121	Voltage			230V
信易塑料机械股份有限公司 Shini Plastics Technologies, Inc.				Frequency			50Hz	
Scale				Page 3		Totally 3		Pages
1				5		6		8