

x means possible broken parts.
 xx means easy broken part, and spare backup is suggested.
 Please confirm the version of manual before placing the purchase order to guarantee that the item number of the spare part is in accordance with the real object.

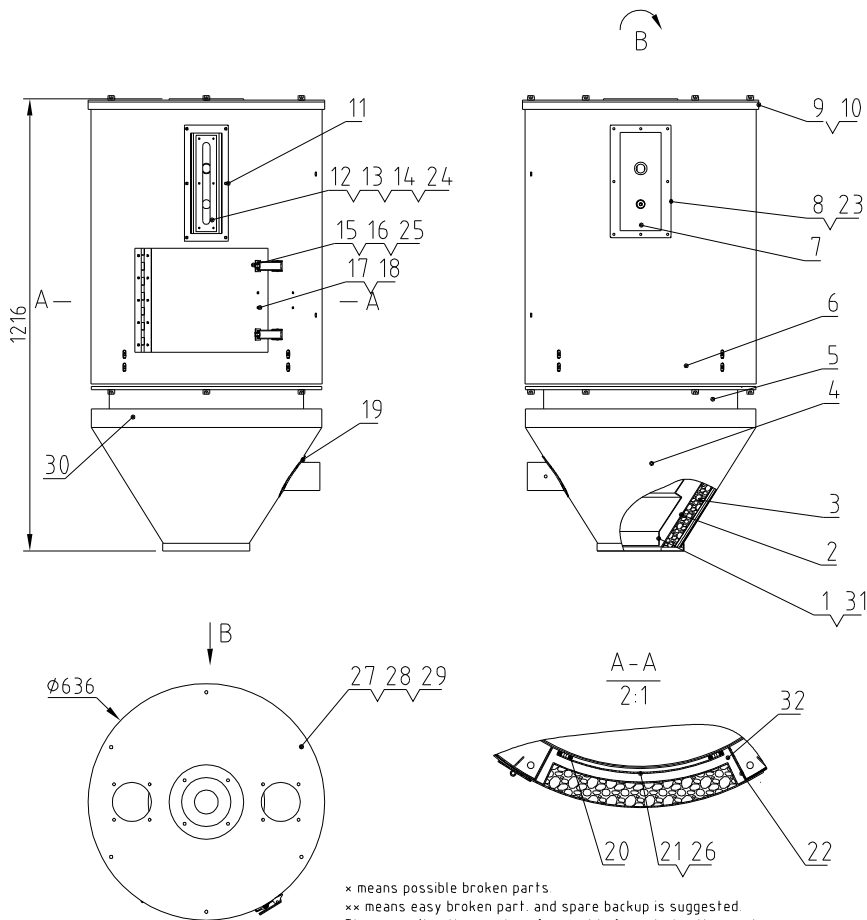
•表示可能损坏的项目; **表示较可能损坏的项目, 建议备份。
 请在下单采购零件之前, 先确认说明书版本号, 以确保零件物料号与实物一致。

Rotary valve power	blower power	heater power	mixing motor power	Ver.
0.4kW	0.55kW	12kW	0.25kW	Ver.C
Rotary valve diameter	Inlet and outlet pipe diameter	Discharge port diameter	Mixing motor speed	hopper capacity
4inch	3inch	4inch	2.4r/min	160L

18	YE15000200000	Anti-rotation level switch 200°		1	
17	BE90600000050	Thermocouple 9400-0000 (SCR-160U-ALL-17 Ver.0)		1	
16	YW02003500000	Heat insulating pipe 1.5" type clay building clay heat insulating 3000		2	
15	YW72033600100	Heat insulating pipe 2" white layer of 4.5" thickness (1.1m)		0.5M	
14	CG24000400150	Rotary valve 300-30/2500/1000/2000/2000		1	
13	SCR-160U-E-ALL	Mixing shaft assembly		1	
12	SCR-160U-F-ALL	Cyclone dust collector assembly		1	
11	YR10001200600	Motor fan motor 200-500W 240V 50Hz 1/2HP		1	
10	BM30055000150	Motor fan motor 200-500W 240V 50Hz 1/2HP		1	
9	YE90070000000	Thermocouple 9400-0000 (SCR-160U-ALL-09)		1	
8	YW02180200100	Heat insulating pipe 1.5" type clay building clay heat insulating 3000		2	
7	BP82184500000	Filter bag φ1800x500mm(SCR-160U-17)	涤纶TD729	2	•
6	SCR-160U-G-ALL	Control box assembly		1	
5	SCR-160U-D-01	Floor stand		1	
4	SCR-160U-C-ALL	Heating case assembly		1	
3	YE16440200200	Logic relay relay for motor control 24VDC 10A		1	
2	SCR-160U-B-ALL	Storage tank assembly		1	
1	YM50903300000	Gear motor SCR03L 100W 112V/110V/400V		1	

序号	代号	名称	材质	数量	备注
		制图		比例 1:25	数量 1
		设计			材质 /
		校对			表面要求 /
标记	更改前	更改后	更改人	日期	审核
				日期	2024.02.29

SHINI 信易电热机械股份有限公司
 Shini Plastics Technologies, Inc.



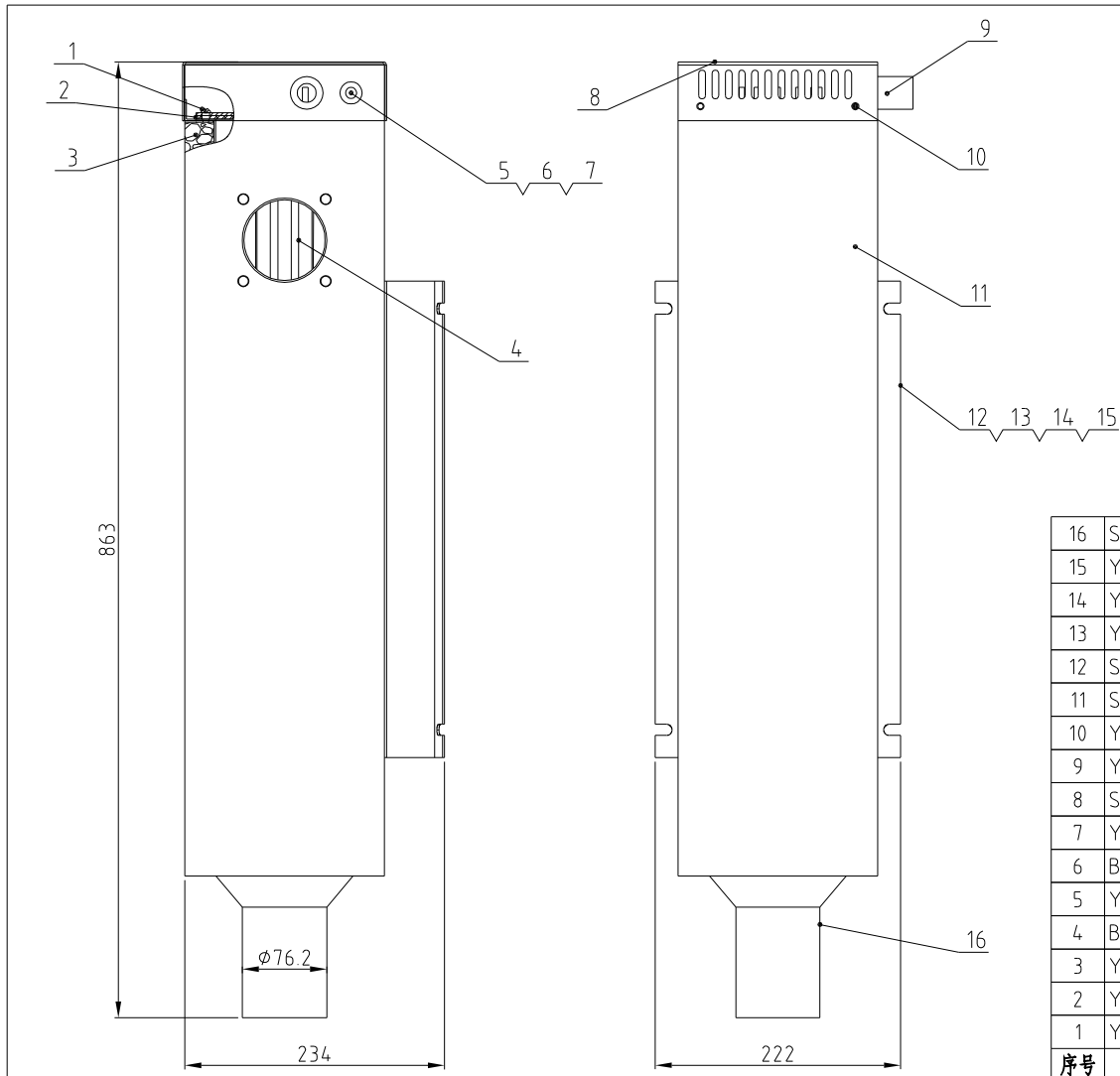
* means possible broken parts
 ** means easy broken part, and spare backup is suggested
 Please confirm the version of manual before placing the purchase order to guarantee that the item number of the spare part is in accordance with the real object

•表示可能损坏的项目；**表示较可能损坏的项目，建议备份。
 请在下单采购零件之前，先确认说明书版本号，以确保零件物料号与实物一致。

31	YW61061500600	Inner hexagon counterbore head screw Q770.1 M5.5-M 8-Longline		6	
30	SCR-160U-B-13	Hopper aluminum cover plate 2	Aluminum plate with patterns L1.0	1	
29	YW65008000100	Standard spring washer GB/T93 8-Longline		16	
28	YW66081600000	Flat washer A grade GB/T97.1 8-Longline		16	
27	YW61083000000	Inner hexagon cylinder head screw Q770.1 M5-M 8-Longline		16	
26	YW62051000000	Large cross socket flat head screw JIS1111 M5-M 5S		8	
25	YW62050500000	Large cross socket flat head screw JIS1111 M5-Longline		4	
24	YW64000500000	Hexagonal nut M5 anti-loose		6	
23	YW67481900000	Cross socket head tapping screw GB/T19826.1 S14-A19		23	
22	SCR-160U-B-14	Cleaning door frame aluminum cover plate 2	Aluminum plate with patterns L1.0	2	
21	SCR-160U-B-18	Cleaning door baffle	SUS201	1	
20	SCR-160U-B-10	Cleaning door fastener	Foam Silicone 8,0	1	
19	SCR-160U-B-16	Hopper air inlet pipe flange	SUS201	1	
18	SCR-160U-B-17	Cleaning door external cover plate	Aluminum plate with patterns L1.0	1	
17	SCR-160U-B-05	Cleaning door	SUS201	1	
16	SCR-160U-B-11	Snap hook	SUS201	2	
15	YW02003000400	Spring buckle adjustable SM-A-35(Ver.C)		2	
14	YW70000100000	Reinforced glass (six holes)	Tempered glass	1	*
13	YR40000600000	Sight glass iron sheet 6 holes	Silica gel	1	*
12	BW09000630040	Sight glass iron six hole plated		1	
11	SCR-160U-B-06	Sight glas	SUS201	1	
10	YR10010040100	Oven silica gel fastener D		7.8M	
9	SCR-160U-B-04	Tank cover		1	
8	SCR-160U-B-09	Level sensor flange	SUS201	1	
7	SCR-160U-B-01	Storage tank		1	
6	SCR-160U-B-07	Hopper cover plate	Aluminum plate with patterns L1.0	1	
5	SCR-160U-B-15	Hopper aluminum cover plate 3	Aluminum plate with patterns L1.0	1	
4	SCR-160U-B-08	Hopper aluminum cover plate	Aluminum plate with patterns L1.0	1	
3	YP60501500000	Epoxy glass laminate wood		0.097	
2	SCR-160U-B-03	External hopper Welding diagram		1	
1	SCR-160U-B-02	Inner hopper		1	

32	SCR-160U-B-12	Cleaning door frame aluminum cover plate 1	Aluminum plate with patterns L1.0	2
----	---------------	--	-----------------------------------	---

						序号	代号	名称	材质	数量	备注		
						标题	SCR-160U	图号	SCR-160U-B-ALL	比例	1:18	数量	1
						储料桶组件				材质 /			
								表面要求		/			
标记	更改前	更改后	更改人	日期	审核	日期	2024.0114	信易电热机械股份有限公司 Shini Plastics Technologies, Inc.		物料号 /			

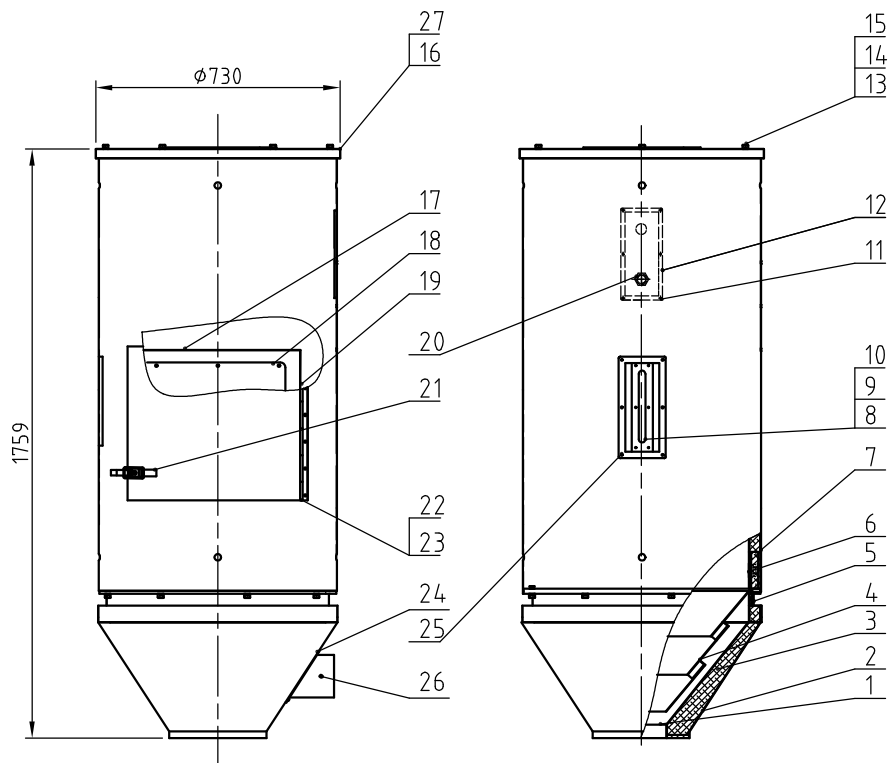


× means possible broken parts.
 ×× means easy broken part and spare backup is suggested.
 Please confirm the version of manual before placing the purchase order to guarantee that the item number of the spare part is in accordance with the real object.

*表示可能损坏的项目; **表示较可能损坏的项目, 建议备份。
 请在下单采购零配件之前, 先确认说明书版本号, 以确保零配件物料号与实物一致。

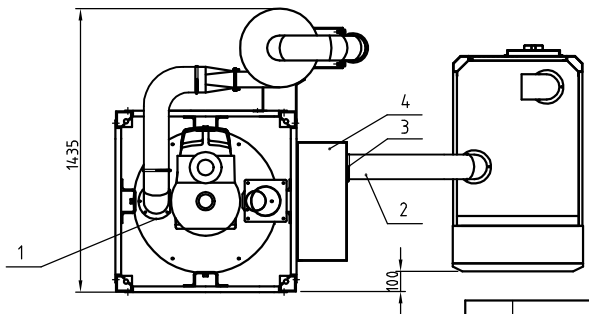
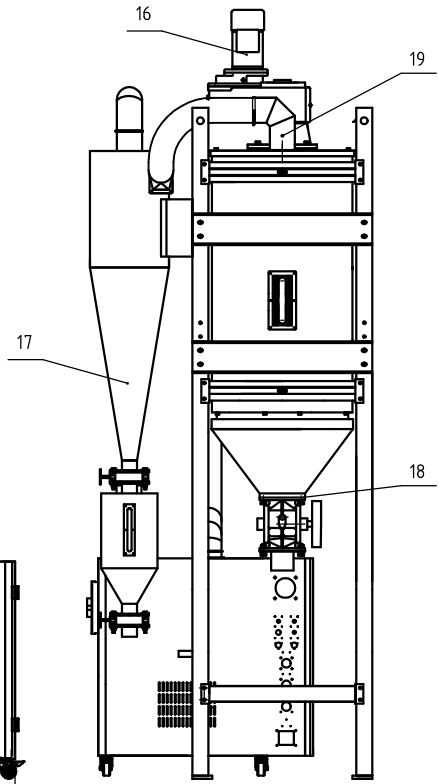
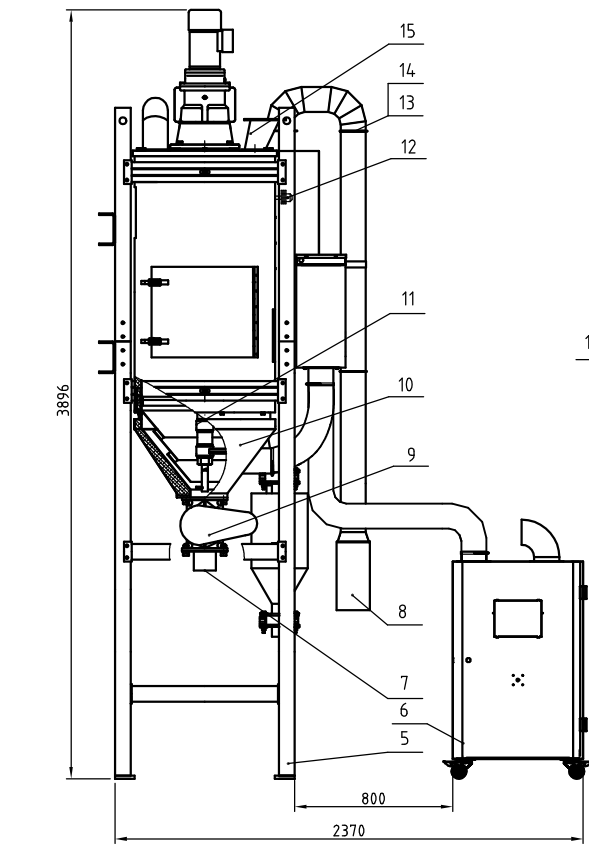
16	SCR-160U-C-02	Hot air duct pipe		1	
15	YW65008000100	Standard spring washer G3/793 Ø-Longzine		4	
14	YW66081600000	Flat washer A grade G3/797.1 (R. 4)Ø41.6 Longzine		4	
13	YW60082500100	Hexagon screw bolt G3/75783 M6x25-12.9 Longzine		4	
12	SCR-160U-C-03	Heating box fixing plate		1	
11	SCR-160U-C-01	Heating box outer box		1	
10	YW62051000100	Large cross socket flat head screw JIS1111 M10x Longzine		6	
9	YE67116040000	Quick connector of hose WQ61-P16B/AD21.2		1	
8	SHD-230U-A-23	Heating tank cover		1	
7	YW63030600000	Cross recessed pan head screw G3/7-823 M6x Longzine		2	
6	BE85013000550	Insulation material (Wool) (for high temp) (heat protection mainly use)		1	
5	YE67109000000	Quick connector of hose WQ61-P16B/AD13.0		1	
4	BH70016007750	Pipe heat		1	
3	YP6282014.0000	Fireproof felt thickness 2mm * length 200 * width 100		0.017	
2	YR10161200000	Insulation material (Wool) (for high temp) (heat protection mainly use)	Silica gel 3.0	1	
1	YW62051500000	Large cross socket flat head screw JIS1111 M10x Longzine		2	
序号	代号	名称	材质	数量	备注

					制图	版号	0	标题	SCR-160U	图号	SCR-160U-C-ALL	比例	1:6	数量	1
					设计	核准			加热箱组件				材质	/	
					校对			信易电热机械股份有限公司 Shini Plastics Technologies, Inc.				表面要求	/		
标记	更改前	更改后	更改人	日期	审核	日期	2024.0114						物料号	/	



27	YR10010040100	Oven silica gel fastener D		1	
26	BE90400000050	Thermocoupler 4M		1	
25	SCR-450U-A-16	Sight glass flange	SUS201(1.5)	1	
24	SCR-450U-A-14	Hopper inlet air pipe flange	SUS201(1.5)	1	
23	SCR-450U-A-12	Cleaning door ext. cover plate	Patterned alu. plate 1.0	1	
22	SCR-450U-A-08	Cleaning door	SUS201	1	
21	YW02003000400	Adjustable snap hook	assembly	2	
20	BH12901620010	Level sensor plug	H58	1	
19	SCR-450U-A-11	Cleaning door cover plate 2	Patterned alu. plate 1.0	2	
18	SCR-450U-A-09	Cleaning door fender plate	SUS201(2.0)	1	
17	SCR-450U-A-10	Cleaning door cover plate 1	Patterned alu. plate 1.0	2	
16	SCR-450U-A-02	Hopper cover	assembly	1	
15	YW65012000000	Standard spring washer GB/T93 12-Longzine		14	
14	YW661224-00000	Flat washer A grade GB/T97.1 12-Longzine		14	
13	YW61123500000	Inner hex. column head screw GB/T70.1 M12×35-12.9-Longzine		14	
12	SCR-450U-A-13	Hopper level flange	SUS201(1.5)	1	
11	YW69042310001	Cross recessed countersunk head tapping screw GB/T 846-ST4.2x13		26	
10	YW70000100000	Reinforced glass (six holes)	Tempered glass	1	
9	YR40000600000	Sight glass fastener six hole	Silica gel	1	
8	BW09000630040	Six hole sight glass iron sheet electroplate	SPCC2.5	1	
7	SCR-450U-A-05	Material storage tank ext. cover plate	Patterned alu. plate 1.0	1	
6	SCR-450U-A-01	Material storage tank	assembly	1	
5	SCR-450U-A-07	Hopper cover plate 2	Patterned alu. plate 1.0	1	
4	SCR-450U-A-04	Inner hopper	assembly	1	
3	YP60501500000	Epoxy glass fiber laminate	assembly	1	
2	SCR-450U-A-06	Hopper cover plate 1	Patterned alu. plate 1.0	1	
1	SCR-450U-A-03	Hopper	assembly	1	
序号	代号	名称	材料	数量	备注

					制图		版号	B	标题	SCR-450U	图号	比例	1:20	数量	1
					设计		核		储料桶组件		SCR-450U-A-ALL		材质		
					校对		准					表面要求			
标记	更改前	更改后	更改人	日期	审核		日期	20220808		信易電熱機械股份有限公司 Shini Plastics Technologies, Inc.		物料号			



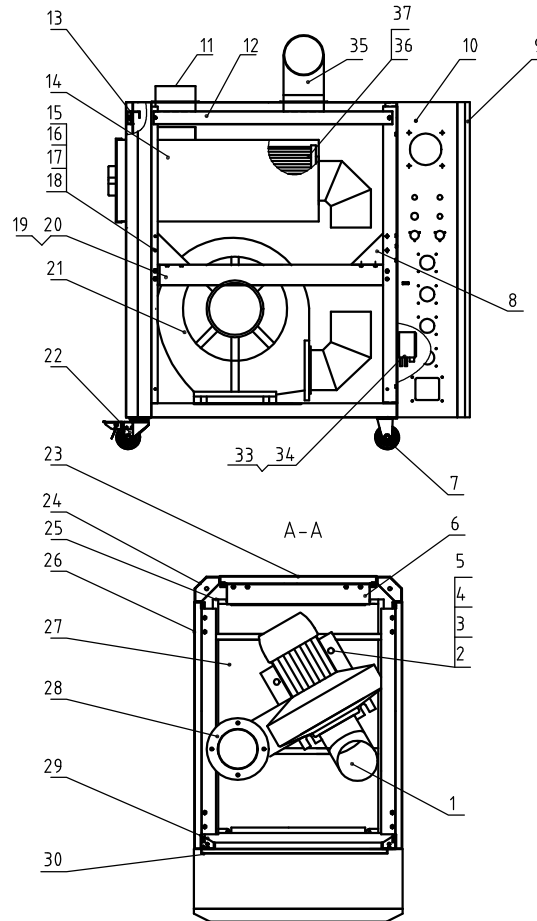
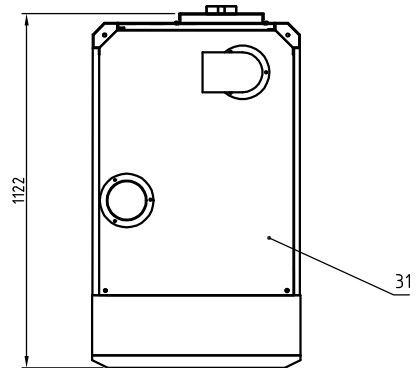
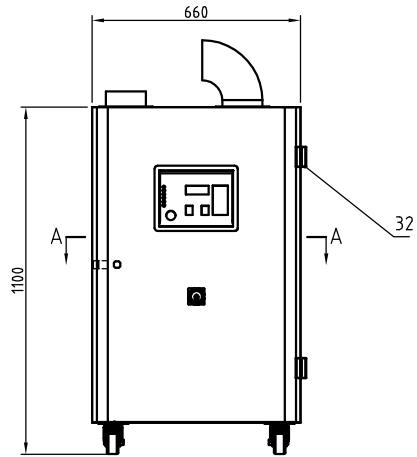
Unloading Motor	Blower Power	Heater Power	Mixing Motor Power	Model Version
0.4kW	2.2kW	24kW	0.55kW	Ver.D
Inlet Air Pipe Dia.	Discharge Port Dia.	Mixing Motor Rotating Speed	Hopper Capacity	
5inch	4inch	2.6r/min	450L	

19	BE90600000050	Thermocouple SM		1	
18	SCR-450U-ALL-16	Rotary discharge valve seal fastener	white silica gel	1	
17	SCR-450U-F-ALL	Cyclone dust collector assembly	Assembly	1	
16	YM50538200800	Gear box	Assembly	1	Nuo De 50HZ
15	SCR-450U-ALL-01	Feed hopper	SUS201	1	
14	YR20000500000	Stainless steel pipe clamp fastener 5"	Silica gel	3	
13	YW07000500000	Stainless steel punching clamp 5"	SUS201	3	
12	YE15000200000	Anti-rotation level switch	Assembly	1	
11	SCR-450U-E-ALL	Mixing shaft assembly	Assembly	1	
10	SCR-450U-A-ALL	Material storage tank assembly	Assembly	1	
9	CG24000400150	Rotary discharge valve SRV-4S	Assembly	1	
8	SCR-450U-ALL-14	Filter cloth bag	TD729	1	
7	SCR-450U-ALL-03	Rotary discharge valve connector	SUS201	1	
6	SCR-450U-B-ALL	Blower frame	Assembly	1	
5	SCR-450U-D-ALL	Floor stand	Assembly	1	
4	SCR-450U-C-ALL	Heating tank assembly	Assembly	1	
3	YW72053600000	Heat-resistant air pipe 5"	Assembly	1	L: 7200mm
2	YW02501200000	Stainless steel pipe clamp 55"	Assembly	6	
1	SCR-450U-ALL-02	Return air port flange	SUS201	1	
序号	代号	名称	材料	数量	备注

制图	版号	1	标题	SCR-450U 结晶机总成	图号	SCR-450U-ALL
设计	核准					
校对	审核					
标记	更改前	更改后	更改人	日期	审核	日期
						20220809

SHINI 信易电热机械股份有限公司
Shini Plastics Technologies, Inc.

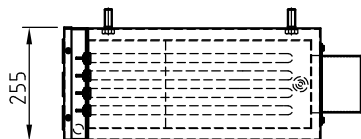
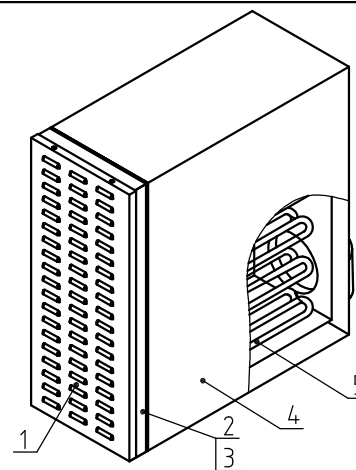
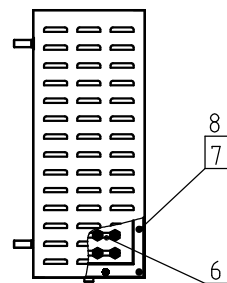
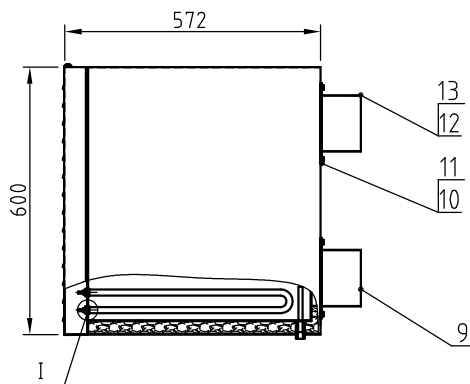
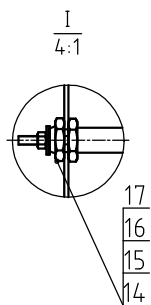
比例	1:24	数量	1
材料			
表面要求			
物料号			



Tech. Req: Parts shall not be scratched or de-burred when assembly.
 Note: The left view is the view after removing the side plate.

37	YR10026000000	Filter hopper fastener Ø260	Silica gel	1	
36	YR50241400100	Filter ADC3		1	
35	SCR-450U-B-23	Inlet air pipe	SUS201	1	
34	YW63041200100	Cross recessed pan head screw M4-12		4	
33	YE15325000000	Negative switch LF32-50	Assembly	1	
32	YW06203100200	Chain CL230-1 right	Assembly	2	
31	SCR-450U-B-14	Top plate	SPCC2.0	1	
30	SCR-450U-B-11	Elec. mount plate	SECC15	1	
29	SCR-450U-B-02	Front column	SPCC	2	
28	SCR-450U-B-19	Blower outlet flange	SUS201	1	
27	SCR-450U-B-04	Blower base	SPCC2.0	1	
26	SCR-450U-B-12	Side plate	SPCC15	2	
25	SCR-450U-B-01	Bottom frame	Assembly	1	
24	SCR-450U-B-03	Rear column	SPCC	2	
23	SCR-450U-B-13	Rear plate	SPCC15	1	
22	YW03000300000	3" brake castor	Assembly	2	
21	BM30224000050	Blower (2.2KW)	Assembly	1	
20	SCR-450U-B-06	Middle beam (right)	SPCC2.0	1	
19	SCR-450U-B-05	Middle beam (left)	SPCC2.0	1	
18	YW64000600300	Hex. nut M6		42	
17	YW65006000100	Spring washer 6		42	
16	YW66061300000	Flat washer 6		42	
15	YW60062000100	Hex. bolt M6x20		42	
14	SCR-450U-B-15	Filter hopper	Assembly	1	
13	SCR-450U-B-09	Rear fixed beam	Assembly	1	
12	SCR-450U-B-08	Side fixed beam	Assembly	2	
11	SCR-450U-B-18	Blower pipe outlet flange	SUS201	1	
10	SCR-450U-B-10	Front plate	SPCC	1	
9	SCR-450U-B-16	Door plank	SPCC15	1	
8	SCR-450U-B-17	Reinforced plate	SPCC2.0	6	
7	YW03000300300	3" black castor	Assembly	2	
6	SCR-450U-B-07	Middle rear beam	SPCC2.0	1	
5	YW64012100000	Hex. nut M12		4	
4	YW65012000000	Spring washer 12		4	
3	YW66122400000	Flat washer 12		4	
2	YW60124000000	Hex. bolt M12x40		4	
1	SCR-450U-B-20	Blower pipe inlet flange	SUS201	1	
序号	代号	名称	材质	数量	备注

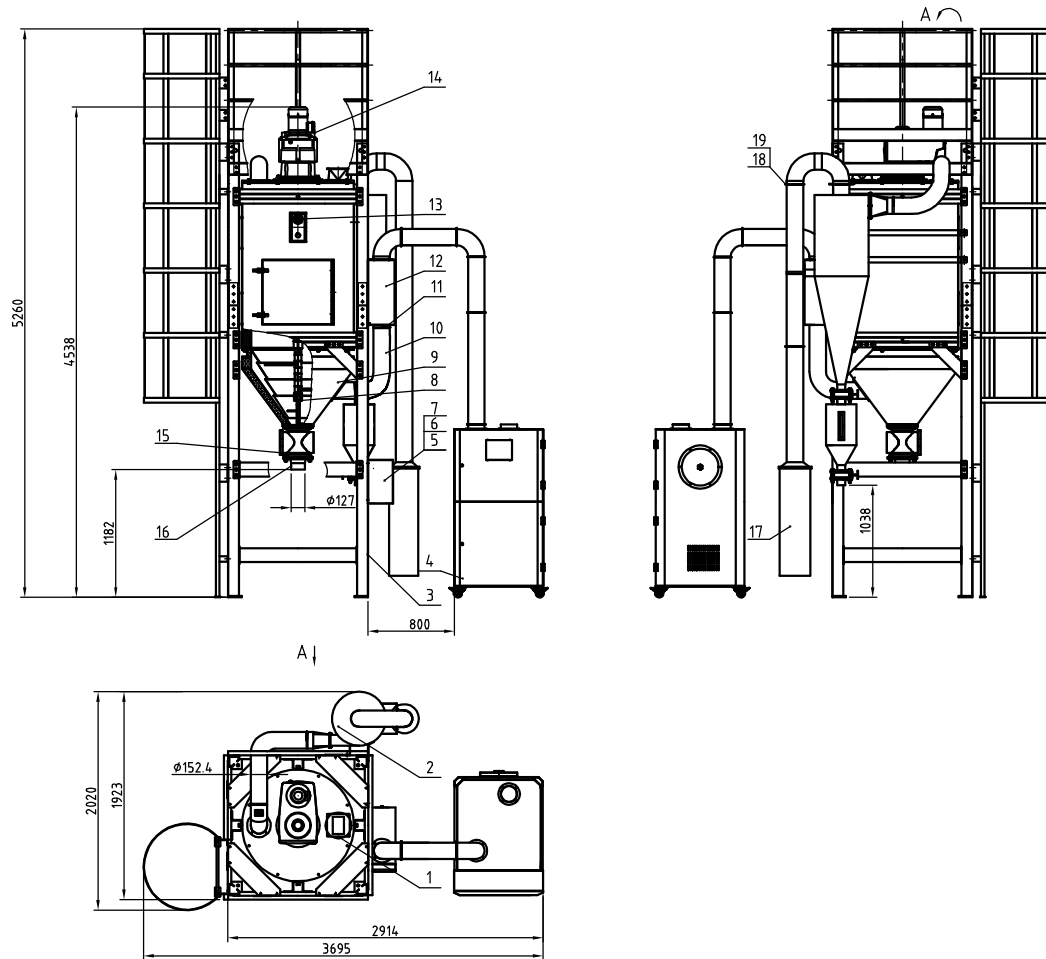
					制图	版号	B	标题	SCR-450U	图号	SCR-450U-B-ALL	比例	1:15	数量	1
					设计	核准			风机架				材质		
					校对							表面要求			
标记	更改前	更改后	更改人	日期	审核	日期	20220808		信易电热机械股份有限公司	Shini Plastics Technologies, Inc.	物料号				



Tech. Req:
1. The parts surface shall not be scratched during assembly.

17	BH11090002310	Pipe heater fixed nut	SUS304	48	
16	YW64031600000	Hex. cap 3/16	SUS201(1.5)	72	
15	YW66051300000	Flat washer 5.5×13×1 Longzine		96	
14	YP52521100000	Natural mica washer 5.2×11	Mica	144	
13	SCR-450U-C-05	Air inlet flange	SUS201(1.5)	1	
12	SCR-450U-C-07	Heating tank air outlet fastener	White silica gel 3.0	2	
11	YW66061300000	Flat washer A grade GB/T97.1 6-Longzine		8	
10	YW60063000000	Hex. bolt GB/T5781 M6×30-Longzine		8	
9	SCR-450U-C-06	Air outlet flange	SUS201(1.5)		
8	YW66061300000	Flat washer A GB/T97.1 6-Longzine		20	
7	YW62062000000	Large cross recessed flat head screw JS1111 M6X20-Longzine		18	
6	YW66523400000	Copper washer	H58	36	
5	BH70045000850	Pipe heater	Assembly	1GR	
4	SCR-450U-C-03	Heating tank welding drawing	Assembly	1	
3	SCR-450U-C-08	Heating tank silica gel fastener	White silica gel 3.0	1	
2	SCR-450U-C-02	Pipe heater mount plate	SECC2.5	1	
1	SCR-450U-C-01	Heating tank cover plate	SPCC1.5	1	
No.	Material number	Name	Mat.	Num.	Remarks

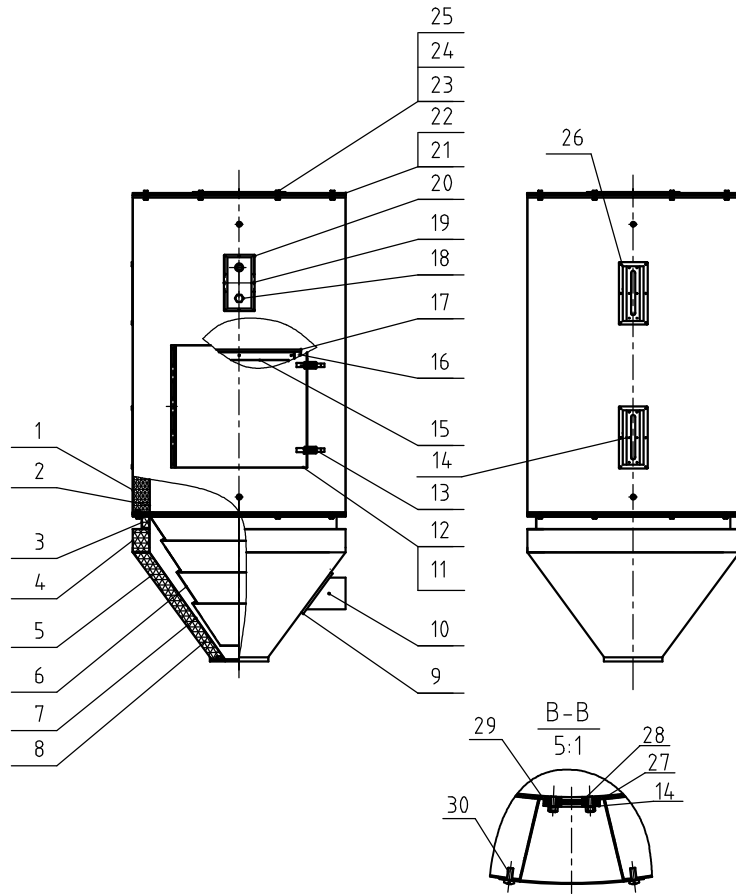
					制图	版号	B	标题	SCR-450U 加热箱组件	图号	SCR-450U-C-ALL	比例	1:15	数量	1
					设计	核							材质		
					校对	准						表面要求			
标记	更改前	更改后	更改人	日期	审核	日期	20220808		信易电热机械股份有限公司 Shini Plastics Technologies, Inc.			物料号			



Blower Power	Heater Power	Mixing Motor Power	Model Version
3.7kW	48kW	1.5kW	Ver.F
Inlet Air Pipe Dia.	Discharge Port Dia.	Mixing Motor Rotating Speed	Hopper Capacity
6inch	5inch	3.7r/min	900L

19	YW07000600900	Stainless steel pipe clamp fastener 6"	white silica gel	3	
18	YW07000600900	Stainless steel punching clamp 6"	SUS201	3	
17	SCR-900U-ALL-08	Filter cloth bag	TD729	1	
16	SCR-900U-ALL-03	Rotary discharge valve connector	SUS201	1	
15	CG24000500150	Rotary discharge valve SRV-5S	Assembly	1	
14	YM50638200200	Gear motor SK6382AFBH	Assembly	1	
13	YE15000200000	Anti-rotation level switch	Assembly	1	
12	SCR-900U-B-ALL	Heating tank assembly	Assembly	1	
11	YW02006500000	Stainless steel pipe clamp 6.5"	SUS201	4	
10	YW72060400000	Heat-resistant air pipe 6"	Assembly	2	L:3200mm
9	SCR-900U-A-ALL	Material storage tank assembly	Assembly	1	
8	SCR-900U-E-ALL	Mixing assembly	Assembly	1	
7	SCR-900U-ALL-06	Elec. component mount plate	SECC1.5	1	
6	SCR-900U-ALL-05	Control box	SPCC1.5	1	
5	SCR-900U-ALL-04	Control box cover	SPCC1.5	1	
4	SCR-900U-C-ALL	Blower frame	Assembly	1	
3	SCR-900U-D-ALL	Floor stand ladder assembly	Assembly	1	with option ML
2	SCR-900U-F-ALL	Cyclone dust collector	Assembly	1	
1	SCR-900U-ALL-02	SSC material pipe inlet adaptor flange	Assembly	1	

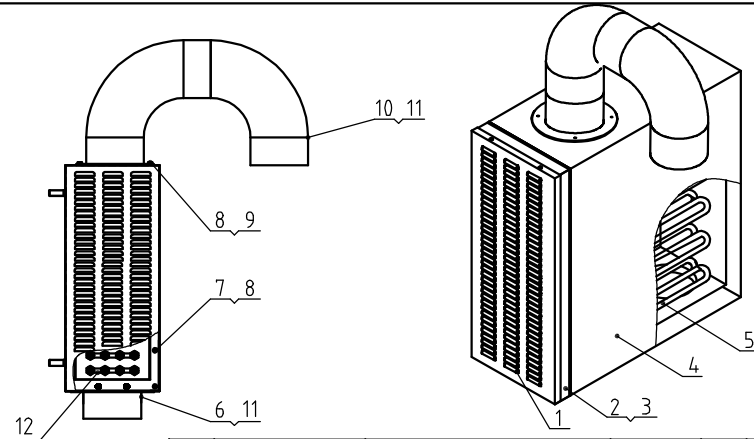
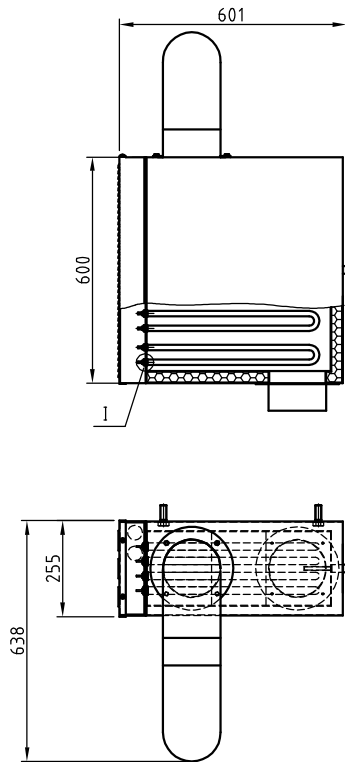
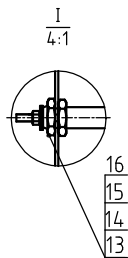
制图	版号	J	标题	SCR-900U 结晶机总成	图号	SCR-900U-ALL	比例	1:38	数量	1
设计	核准		表面要求				材质			
校对	日期	20220805	物料号							
标记	更改前	更改后	更改人	日期	审核	日期	SHINI 信易电热机械股份有限公司 Shini Plastics Technologies, Inc.			



30	YW67481900000	Cross recessed pan head self-drilling and tapping screw GB/T15856.1 S14.8x19-Longzine		20	
29	YW64000500000	Hex nut M5 anti-loose		12	
28	YW70000100000	Reinforced glass (six holes)	Tempered glass	2	
27	YR40000600000	Sight glass fastener six hole	rubber	2	
26	SCR-900U-A-17	Sight glass inner frame	SUS201	2	
25	YW65010000000	Standard spring washer GB/T93 10-Longzine		16	
24	YW66102500000	Flat washer A grade 10x25x1.5-Longzine		16	
23	YW61103500000	Inner hex. column head screw GB/T70.1-M10x35-12.9-Longzine		16	
22	YR10010040100	Oven fastener D type		16M	
21	SCR-900U-A-06	Hopper cover	assembly	1	
20	YW69042310001	Cross recessed countersunk head tapping screw GB/T 846-S14.2x13		38	
19	SCR-900U-A-14	Hopper level sensor flange	SUS201	1	
18	SCR-900U-A-16	Hopper level sensor plug	H62	1	
17	SCR-900U-A-11	Cleaning door cover plate 2	Patterned alu. plate 1.0	2	
16	SCR-900U-A-10	Cleaning door cover plate 1	Patterned alu. plate 1.0	2	
15	SCR-900U-A-08	Cleaning door fender plate	SUS201(2.5)	1	
14	BW09000630040	Sight glass iron sheet six hole	SPCC2.5	2	
13	SHD-900U-B-ALL	Door buckle	assembly	2	borrow
12	SCR-900U-A-07	Cleaning door	SUS201	1	
11	SCR-900U-A-09	Cleaning door cover plate	Patterned alu. plate 1.0	1	
10	BE90600000050	Thermocoupler 5M		1	
9	SCR-900U-A-15	Hopper inlet air pipe flange	SUS201	1	
8	YP60001000100	Heat insulated cotton	assembly	1	
7	SCR-900U-A-02	Hopper	assembly	1	
6	SCR-900U-A-13	Inner hopper	assembly	1	
5	SCR-900U-A-03	Hopper cover plate 1	Patterned alu. plate 1.0	1	
4	SCR-900U-A-04	Hopper cover plate 2	Patterned alu. plate 1.0	1	
3	SCR-900U-A-05	Hopper cover plate 1	Patterned alu. plate 1.0	1	
2	SCR-900U-A-01	Material storage tank	assembly	1	
1	SCR-900U-A-12	Material storage tank cover plate	Patterned alu. plate 1.0	1	
序号	代号	名称	材质	数量	备注

					制图		版号	C	标题	SCR-900U 储料桶组件	图号	SCR-900U-A-ALL	比例	1:28	数量	1
					设计		核									
					校对		准									
标记	更改前	更改后	更改人	日期	审核		日期	20220805					表面要求			
													物料号			

SHINI 信易电热机械股份有限公司
Shini Plastics Technologies, Inc.

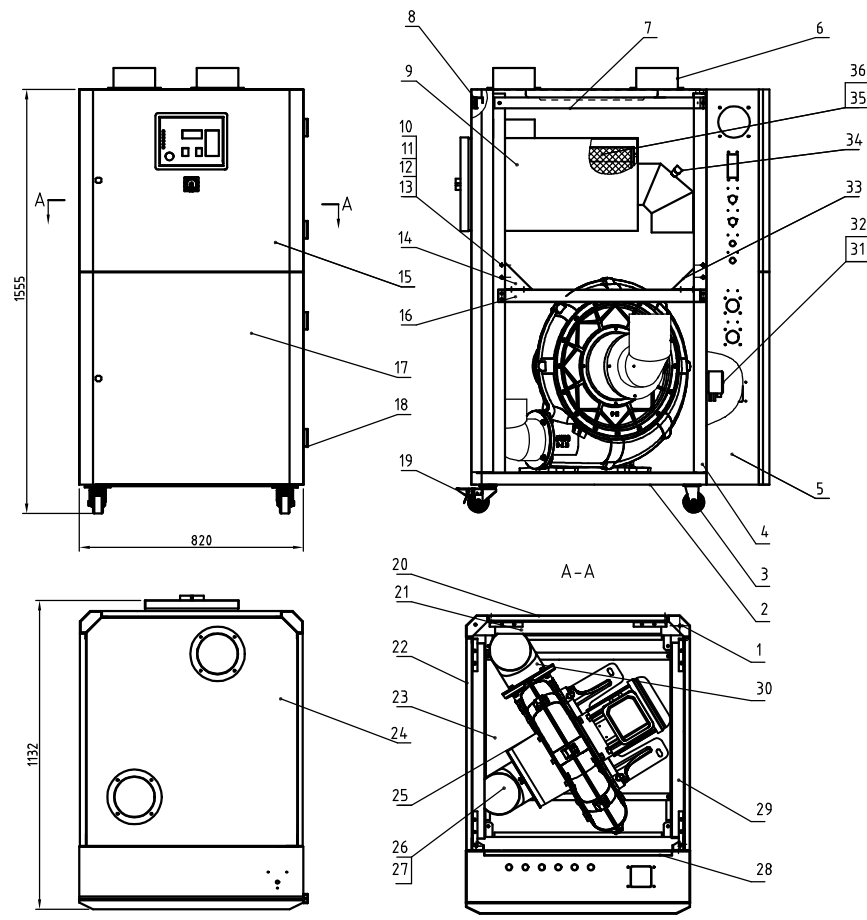


Tech. Req:

1. The parts surface shall not be scratched during assembly.
2. The electrical heating pipes are divided into four groups for wiring, 6 in each group, 12kw;

16	BH11090002310	Pipe heater fixed nut	SUS304	48	
15	YW64031600000	Hex. cap 3/16	SUS201(1.5)	96	
14	YW66051300000	Flat washer 5.5×13×1.0 Longzine		96	
13	YP52521100000	Natural mica washer 5.2×11	Mica	192	
12	YW66523400000	Copper washer	H58	36	
11	SCR-900U-B-08	Heating tank air outlet fastener	White silica gel 3.0	2	
10	SCR-900U-B-05	Air inlet flange	SUS201(1.5)	1	
9	YW60063000000	Hex bolt GB/T5781 M6×30-4.8-Longzine		8	
8	YW66061300000	Flat washer A grade GB/T97.16-Longzine		28	
7	YW62062000000	Large cross recessed flat head screw JS1111 M6X20-Longzine		18	
6	SCR-900U-B-06	Air outlet flange	SUS201(1.5)	1	
5	BH70090000950	Pipe heater	Assembly	1GR	
4	SCR-900U-B-03	Heating tank welding drawing	Assembly	1	
3	SCR-900U-B-07	Heating tank silica gel fastener	White silica gel 3.0	1	
2	SCR-900U-B-02	Pipe heater mount plate	SECC2.5	1	
1	SCR-900U-B-01	Heating tank cover plate	SPCC2.0	1	
序号	代号	名称	材质	数量	备注

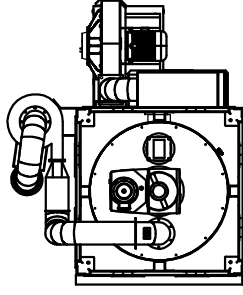
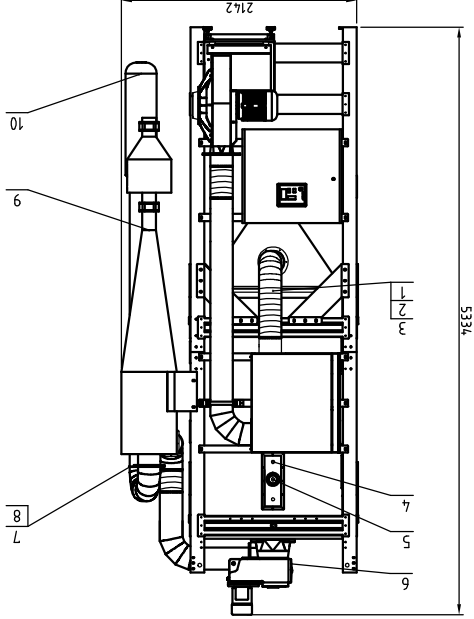
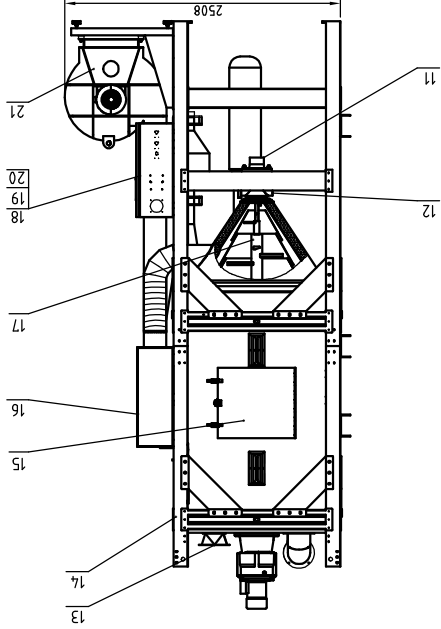
					制图	版号	E	标题	SCR-900U 加热箱组件	图号	SCR-900U-B-ALL	比例	1:15	数量	1
					设计	核准						表面要求		材质	
					校对							物料号			
标记	更改前	更改后	更改人	日期	审核		日期	20220805	信易電熱機械股份有限公司 Shini Plastics Technologies, Inc.						



36	YR10034.000000	Filter hopper fastener $\phi 34$ 0mm	Silica gel	1	
35	YW80083800200	Filter ext. 276inner 167x570	Assembly	1	
34	BL08102100020	Right triangular plate SIC-004	SPCC2.0	3	
33	YW80083800200	Air pipe quick connector APL8-03 3/8	Assembly	2	
32	YW6204.1000000	Large cross recessed flat head screw $\phi 5$ 111M4x10-Longzine		4	
31	YE15325000000	Negative switch LF32-50	Assembly	1	
30	SCR-900U-C-22	Blower outlet flange	SUS201	1	
29	SCR-900U-C-21	Middle beam (right)	Assembly	1	
28	SCR-900U-C-20	Elec. mount plate	SECC1.5	1	
27	SCR-900U-C-19	Air port screen plate	Assembly	1	
26	SCR-900U-C-18	Blower pipe inlet flange	SUS201	1	
25	YM30015001600	Blower (3.7kW CX-150A)	Assembly	1	
24	SCR-900U-C-17	Side plate	SPCC2.0	1	
23	SCR-900U-C-16	Blower fixed plate	SPCC2.0	1	
22	SCR-900U-C-15	Side plate	SPCC1.5	2	
21	SCR-900U-C-14	Middle beam	SPCC2.0	1	
20	SCR-900U-C-13	Rear plate	SPCC1.5	1	
19	YW03000300200	3" black castor	Assembly	2	
18	YW06203100200	Chain CL20-1 right	Assembly	4	
17	SCR-900U-C-12	Lower door plank	SPCC1.5	1	
16	SCR-900U-C-11	Middle beam (left)	Assembly	1	
15	SCR-900U-C-10	Upper door plank	SPCC1.5	1	
14	BL08112000020	Left triangular plate SIC-003	SPCC2.0	3	
13	YW64.000800000	Hex. nut GB/T6172.1 M6-Longzine		4.2	
12	YW65060000000	Standard spring washer GB/T93 6-Longzine		4.2	
11	YW66061300000	Rat washer A grade GB/T97.1 6-Longzine		4.2	
10	YW60062000100	Hex. bolt GB/T5781 M6x20-4.8-Longzine		4.2	
9	SCR-900U-C-08	Filter hopper	Assembly	1	
8	SCR-900U-C-07	Rear fixed beam	Assembly	1	
7	SCR-900U-C-06	Side fixed beam	Assembly	2	
6	SCR-900U-C-05	Blower pipe outlet flange	SUS201	2	
5	SCR-900U-C-04	Front plate	Welding parts	1	
4	SCR-900U-C-03	Front column	Welding parts	2	
3	YW03000300300	Plated fixed black castor 3"	Assembly	2	
2	SCR-900U-C-02	Bottom frame	Assembly	1	
1	SCR-900U-C-01	Rear column	焊件	2	
序号	代号	名称	材质	数量	备注

					制图	版号	D	标题	图号	比例	数量	1
					设计	核准		SCR-900U	SCR-900U-C-ALL	1:15		
					校对			风机架		材质		
					审核					表面要求		
标记	更改前	更改后	更改人	日期	日期	日期	20220805	SHINI 信易电热机械股份有限公司 Shini Plastics Technologies, Inc.		物料号		

Unloading Blower	Blower Power	7.5kW	Heater Power	96kW	Mixing Motor Rating	Ver D	0.4kW
					Hopper Capacity		
					Inlet Air Pipe Dia	8inch	
					Discharge Port Dia	5inch	
					Mixing Motor Rotating Speed	4.3r/min	
					Hopper Capacity	1600L	



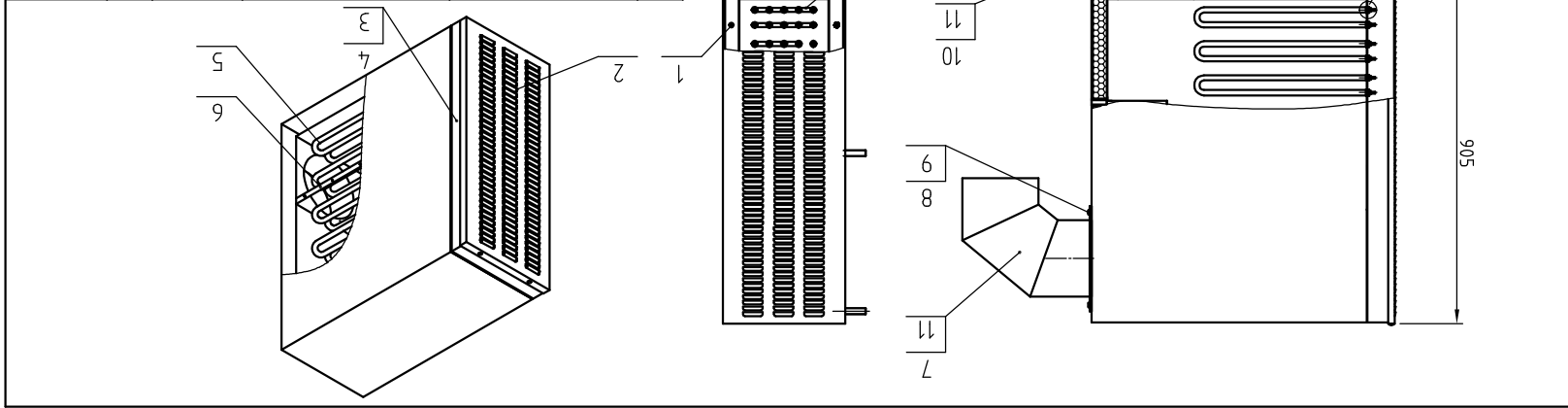
序号	代号	名称	材料	数量	备注
1	YW720804.000000	Heat-resistant air pipe 8"	Assembly	1	L=1500mm
2	YW202008500000	Stainless steel pipe clamp 8.5"	Assembly	6	
3	BE906000000050	Thermocoupler 5M	Assembly	1	
4	BE908000000050	Thermocoupler 8M	Assembly	1	
5	YE150002000000	Anti-rotation level switch	Assembly	1	
6	YM507382000000	Mixing gear motor	Assembly	1	Nuo De
7	SCR-1600U-ALL-20	8" clamp	Assembly	3	
8	YR100080000000	White silica gel fastener	white silica gel	3	
9	SCR-1600U-C-ALL	Cyclone dust collector assembly	Assembly	1	
10	SCR-1600U-ALL-13	Filter cloth bag	polyester fiber	1	
11	SCR-1600U-ALL-06	Rotary discharge valve connector	SUS201	1	
12	CG24000500750	Rotary discharge valve SRV-5S	Assembly	1	
13	SCR-1600U-ALL-05	SSC inlet port adaptor flange	Assembly	1	
14	SCR-1600U-D-A-ALL	Floor stand	Assembly	1	
15	SCR-1600U-A-ALL	Material storage tank assembly	Assembly	1	
16	SCR-1600U-E-ALL	Heating tank assembly	Assembly	1	96KW
17	SCR-1600U-F-ALL	Mixing assembly	Assembly	1	
18	SCR-1600U-ALL-01	Control box door plank	SPCC15	1	
19	SCR-1600U-ALL-02	Control box	SPCC2.0	1	
20	SCR-1600U-ALL-03	Electric mount plate	SECC15	1	
21	SCR-1600U-B-ALL	Blower assembly	Assembly	1	

物料号	物料要求	表面要求	比例	数量	材质	图号	代号	名称	图号	材料	数量	备注
			1:38	1		SCR-1600U-ALL	SCR-1600U	结晶机总装	SCR-1600U		1	
记录	更改前	更改后	更改人	日期	审核	批准	日期	20220810	日期	20220810		

SHINI
信昌电热机械股份有限公司
Shini Pasteros Technologies, Inc

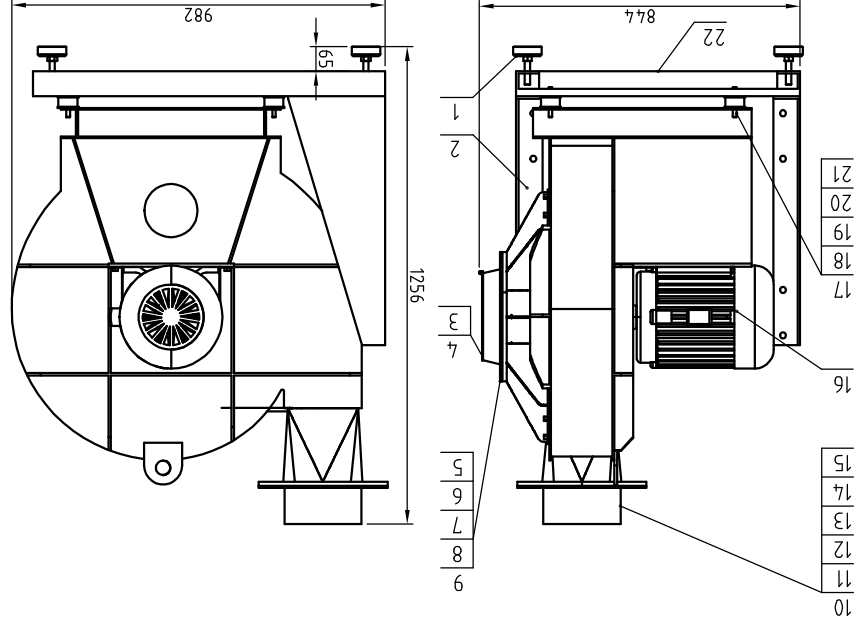
标记	更改前	更改后	更改人	日期	审核	日期	20220810
					校对		
					设计		
					制图		
版号	B	图号	SCR-1600U	标题	加热箱	图号	SCR-1600U-E-ALL
比例	1:15	数量	1	表面处理	RAL9010	物料号	

序号	代号	名称	材料	数量	备注
1	YW62061500000	Large cross recessed flat head screw JIS1111 M6X5-Longzine		32	
2	SCR-1600U-E-03	Heating tank cover plate	SPEC2.0	1	
3	SCR-1600U-E-04	Pipe heater mount plate	SECC2.5	1	
4	SCR-1600U-E-07	Heating tank silica gel fastener	White silica gel 3.0	1	
5	SCR-1600U-E-01	Heating tank welding drawing	Assembly	1	
6	BH701600000850	Pipe heater	Assembly	1GR	96KW
7	SCR-1600U-E-05	Air inlet flange	SUS201	1	
8	YW60063000000	Hex bolt GB/T1781 M6x30-6-8-Longzine		8	
9	YW66061300000	Flat washer A grade GB/T97.1 6-Longzine		8	
10	SCR-1600U-E-06	Air outlet flange	Assembly	1	
11	SCR-1600U-E-08	Heating tank air outlet fastener	White silica gel 3.0	2	
12	YW66523400000	Copper washer	H58	36	
13	YP52521600000	Mica washer	Mica	192	
14	YW66051300000	Flat washer 5.5x13x1.0 Longzine		96	
15	YW64031600000	Hex. cap 3/16	SUS201(1.5)	96	
16	BH11090002310	Pipe heater fixed nut	SUS304	90	
17	YP60613000000	Phenolic laminated cloth plate	Alu silicate felt cotton	1	

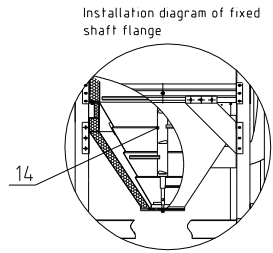
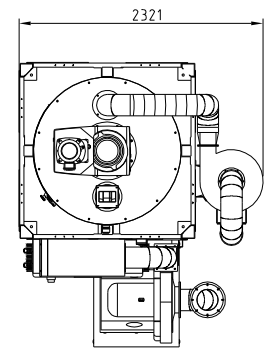
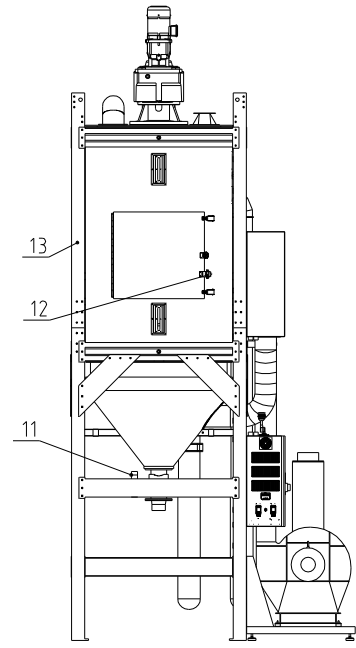
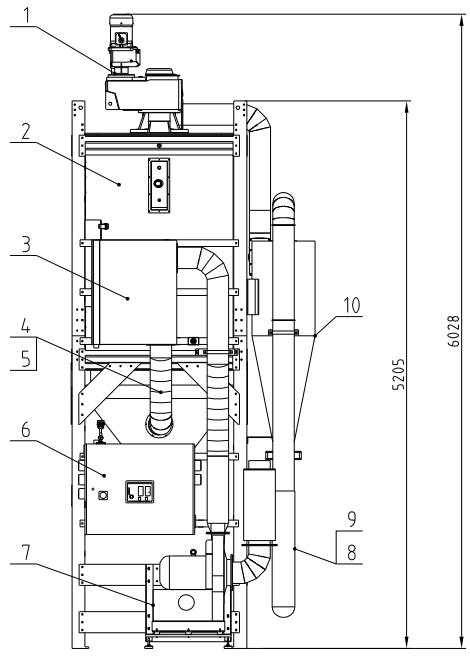


标记	更改前	更改后	更改人	日期	审核	日期	20220810
					校对		
					设计	魏莹	
					核准		
制图	版本号	B	标题	SCR-1600U	图号	SCR-1600U-B-ALL	物料号
					比例	1:15	数量
					数量	1	材料
							表面要求

序号	代号	名称	材料	数量	备注
1	BW30012001410	Foot pad SH120	Assembly	4	
2	SCR-1600U-B-05	Reinforced plate	Foot pad SH120	2	SPH6.0
3	SCR-1600U-B-02	Adjustable air plate	SPPC2.0	1	
4	YW69061000100	Butterfly bolt GB/T 3098 M6x10		2	
5	SCR-1600U-B-06	Adjustable air cover	Welding parts	1	
6	YW60165000200	Hex nut GB/T5783 M16x50-12.9-Longzine		8	
7	YW66163000000	Flat washer A grade GB/T97.1 16-Longzine		16	
8	YW64001600000	Hex nut GB/T6170M16-Longzine		8	
9	YW65016200000	Standard spring washer GB/T93 16-Longzine		8	
10	SCR-1600U-B-03	Blower outlet air pipe	SUS201	1	
11	SCR-1600U-B-04	Blower pipe outlet air flange	white silica gel	1	
12	YW60123500000	Hex bolt GB/T5783 M12x35-8-8-Longzine		12	
13	YW65012200000	Standard spring washer GB/T93 12-Longzine		12	
14	YW661224.00000	Flat washer A grade GB/T97.1 12-Longzine		12	
15	YW64012100000	Hex nut GB/T6170M12-Longzine		8	
16	BM30754500050	Blower CF-75	Assembly	1	
17	YW03536000000	Motor foot pad HB050-30-60A-M10	Assembly	4	
18	YW65010000000	Standard spring washer GB/T93 10-Longzine		4	
19	YW66125000000	Flat washer A grade GB/T97.1 10-Longzine		8	
20	YW64101100000	Hex nut M10 (anti-loose)		4	
21	YW64001000100	Hex nut GB/T6170 M10-Longzine		4	
22	SCR-1600U-B-01	Blower mount plate	Welding parts	1	



Discharging motor	Blower power	Heater power	Mixing motor power	Ver.
0.4kW	15kW	128kW	4kW	Ver.C
	Inlet and outlet pipe diameter	Discharge port diameter	Mixing motor speed	Hopper capacity
	8inch	5inch	3.7r/min	2500L



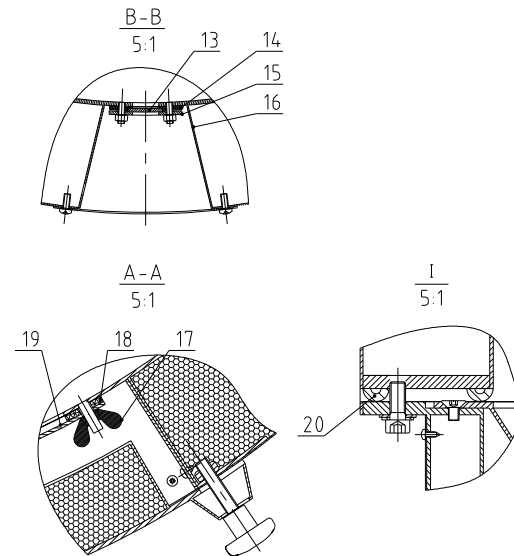
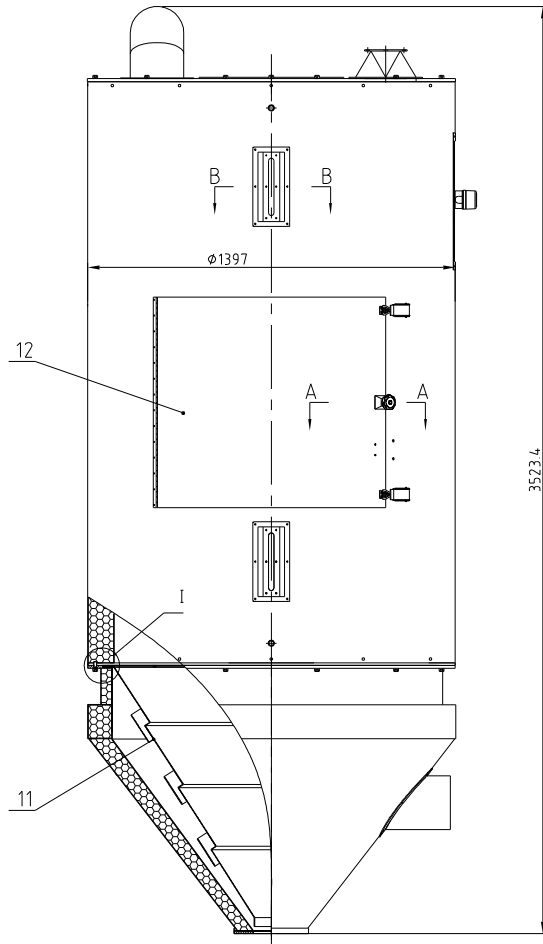
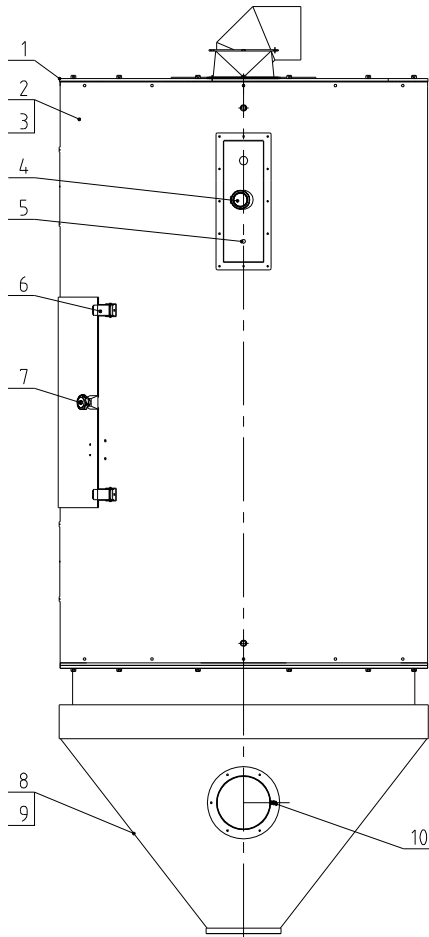
14	SCR-2500U-E-ALL	Mixing assembly		1	
13	SCR-2500U-D-ALL	Tripod assembly		1	
12	YE16440200200	Magnetic coding safety door switch		1	
11	CG24.000500150	SMY-SS-3;1/220V/400V/50HZ/60HZ		1	
10	SCR-2500U-F-ALL	Cyclone dust collector		1	
9	YW02200200100	Dust filter bag clamp specification:		2	
8	YP82215100100	Filter bag 1215X1200MM		2	
7	SCR-2500U-B-ALL	Pan frame		1	
6	SCR-2500U-G-ALL	Control box components		1	
5	YW02008500000	Stainless steel tube bundle 8.5"es		6	
4	YW72080400000	Heat-resistant air duct 8" 4u		2	*
3	SCR-2500U-C-ALL	Heating box		1	
2	SCR-2500U-A-ALL	Crystallization barrel		1	
1	YMS0838200000	Reducer SUREDRIVE TL2 0L-112HP		1	
序号	代号	名称	材料	数量	备注

"x" indicates the items that may be damaged, "x x" indicates the items that are more likely to be damaged. It is recommended to back them up. Please confirm the version number of the instruction manual before placing an order to purchase spare parts, so as to ensure that the material number of spare parts is consistent with the physical one.

					制图	版号	D	标题	SCR-2500U	图号		比例	1:4.5	数量	1
					设计	核准		结晶机总成		SCR-2500U-ALL					
					校对										
标记	更改前	更改后	更改人	日期	审核	日期	20151015					表面要求			

SHINI 信易电热机械股份有限公司
Shini Plastics Technologies, Inc.

物料号 /



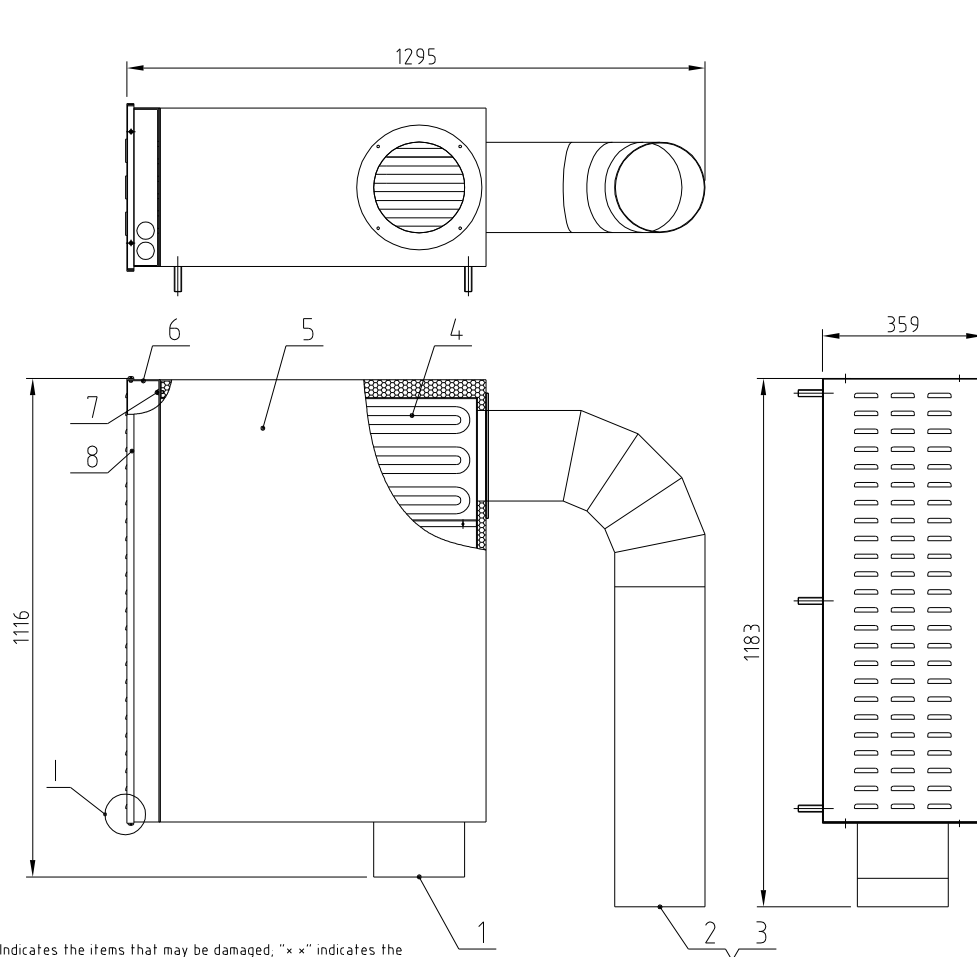
20	YR1001004.0100	Oven Silicone Clamp D Type		17.5	
19	SCR-2500U-A-14	Clean door bezel	SUS201	1	
18	SCR-2500U-A-17	Clean door gasket	Round red silicon gel	1	
17	YW690008000000	Wing nut GB/T 62 M8		24	
16	SHD-4000U-A-57	Frame inside the sight glass	SUS201	2	
15	BW09000630040	Six holes sight glass frame plate 250*110		2	
14	YR400006000000	Sight glass bezel in white and 250*110*2	White silica gel	2	
13	YW700001000000	Tempered glass six holes 250*150*12	Heat/forced glass	2	•
12	SCR-2500U-A-10	clear door		1	
11	SCR-2500U-A-04	Inner hopper	SUS201	1	
10	BE906000000050	Thermocouple 5*93L*40*2M (SCR-450)		1	
9	SCR-2500U-A-06	Hopper outer panel 1	Aluminum plate with pattern LI	1	
8	SCR-2500U-A-03	outer hopper		1	
7	BH10150001310	Big Star combination M10		1	
6	BL02090007820	Door handle assembly SD-400-D-ALL		2	
5	YE90059301800	Thermocouple 5*93L*40*2M		1	
4	YE150002000000	Binary pulse material level switch SR		1	
3	SCR-2500U-A-01	Storage barrel		1	
2	SCR-2500U-A-05	Barrel outer panel	Aluminum plate with pattern LI	1	
1	SCR-2500U-A-02	Barrel lid		1	
序号	代号	名称	材料	数量	备注

"x" indicates the items that may be damaged; "x x" indicates the items that are more likely to be damaged.

It is recommended to back them up.

Please confirm the version number of the instruction manual before placing an order to purchase spare parts, so as to ensure that the material number of spare parts is consistent with the physical one.

					制图	版号	D	标题	SCR-2500U	图号	SCR-2500U-A-ALL	比例	1:18	数量	1
					设计	核准		结晶桶							
					校对										
标记	更改前	更改后	更改人	日期	审核	日期	2015.10.15	SHINI	信易电热机械股份有限公司 Shini Plastics Technologies, Inc.		表面要求		/		
											物料号		/		



Technical requirements:

1. The surface of the parts must not be scratched and must be cleaned thoroughly before assembly.
2. The parts need to be firmly fixed and undergo rust prevention treatment after assembly.
3. YR1035004.0000 is required for the connection between serial numbers 1, 2, 5, and 4. Cut the gasket for sealing, and there should be no air leakage after assembly.
4. The total power of the electric heating tube is 128KW, divided into 5 groups, each group is 25.6KW.

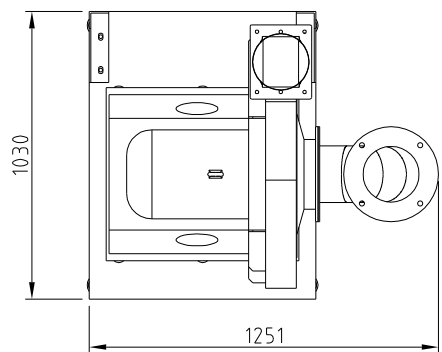
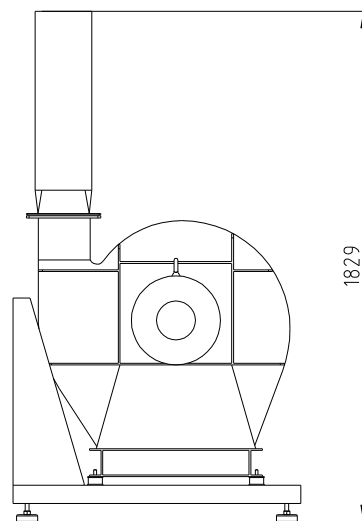
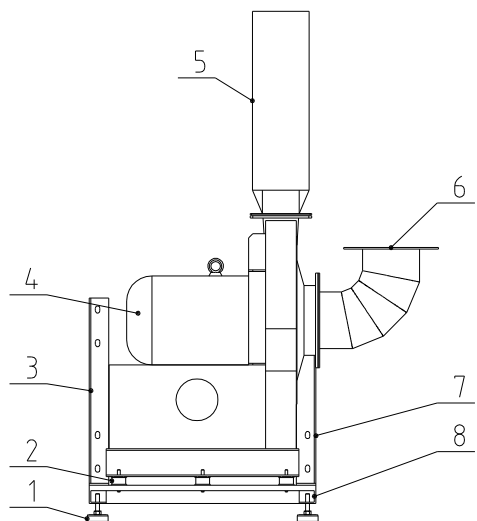
8	SCR-2500U-C-01	Heating box cover plate	SPCC15	1	
7	YW63061500000	Cross recessed pan head screw Q1919 M6x15-Longline		42	
6	BL11250013520	Pipe heater mounting plate SCR-2500U-C-02(Ver.0)	SECC2.5	1	
5	SCR-2500U-C-03	Heating box body		1	
4	BH70250007650	Pipe heater SCR-2500U 3φ/230V, 400V/50HZ, 6000/101G		1	
3	YR1035004.0000	Non-solvent resistant gasket of the air inlet flange, air outlet flange, pipe mounting plate		0.067	
2	SCR-2500U-C-07	Air inlet flange	SUS201	1	
1	SCR-2500U-C-08	Air outlet flange	SUS201	1	
序号	代号	名称	材料	数量	备注

"x" indicates the items that may be damaged; "x x" indicates the items that are more likely to be damaged.

It is recommended to back them up.

Please confirm the version number of the instruction manual before placing an order to purchase spare parts, so as to ensure that the material number of spare parts is consistent with the physical one.

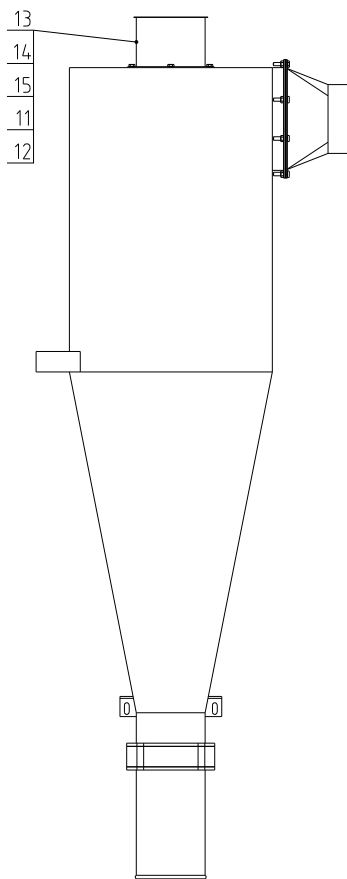
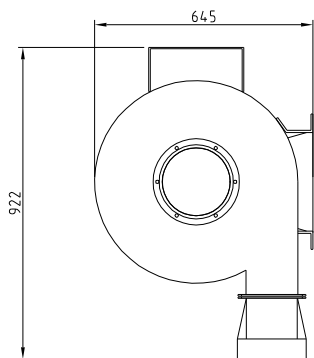
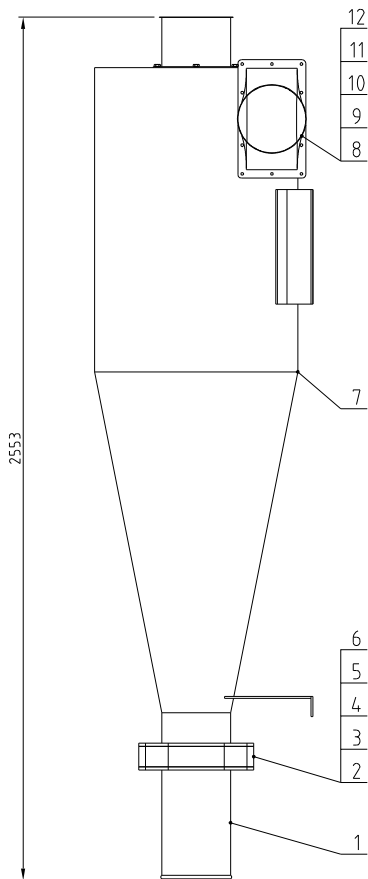
					制图	版号	B	标题	SCR-2500U	图号	比例	1:15	数量	1
					设计	核准		加热箱		SCR-2500U-C-ALL			材质	/
					校对				信易電熱機械股份有限公司 Shini Plastics Technologies, Inc.		表面要求	/		
标记	更改前	更改后	更改人	日期	审核	日期	20151015				物料号	/		



"x" indicates the items that may be damaged; "x x" indicates the items that are more likely to be damaged.
It is recommended to back them up.
Please confirm the version number of the instruction manual before placing an order to purchase spare parts, so as to ensure that the material number of spare parts is consistent with the physical one.

8	SCR-2500U-B-01	Blower mount plate		1	
7	SCR-2500U-B-11	Blower frame right fixing plate	SPH6.0	1	
6	SCR-2500U-B-13	Air inlet elbow		1	
5	SCR-2500U-B-08	Blower Air outlet flange		1	
4	YM30001500000	High pressure centrifugal ventilator 150W		1	
3	SCR-2500U-B-12	Left fixing plate of blower frame	SPH6.0	1	
2	YW03536000000	Electric motor Foot pad HB050-30-60A-M10		4	
1	BW30012001410	Foot pad SH20 can carry 50KG (for Plug-in factory's own use)		4	
序号	代号	名称	材料	数量	备注

					制图	版号	B	标题	SCR-2500U	图号	比例	1:24	数量	1
					设计	核 准		风机架	SCR-2500U-B-ALL			材质	/	
					校对							表面要求	/	
标记	更改前	更改后	更改人	日期	审核	日期	20151015	信易電熱機械股份有限公司 Shini Plastics Technologies, Inc.		物料号	/			



"x" Indicates the items that may be damaged; "x x" indicates the items that are more likely to be damaged. It is recommended to back them up. Please confirm the version number of the instruction manual before placing an order to purchase spare parts, so as to ensure that the material number of spare parts is consistent with the physical one.

15	YW6500800100	Standard spring washer Q270 F-Longzine	6	
14	SCR-2500U-F-02	Exhaust vent flange	1	
13	SCR-2500U-F-05	Exhaust vent flange fastener	1	
12	YW66081600000	Flat Washer Grade A Q270.12.4004 Q-Longzine	16	
11	YW60082500100	Hexagon head bolt Q270B M25-2L F-Longzine	16	
10	YW64080600000	Hexagonal nut Q270 M16-Longzine	10	
9	SCR-2500U-F-04	Air inlet flange	1	
8	SCR-2500U-F-06	Air inlet flange fastener	1	
7	SCR-2500U-F-01	Dust removal bucket	1	
6	YW64001600000	Hexagonal nut Q270 M16-Longzine	4	
5	YW66163000000	Flat washer A grade Q270.11 F-Longzine	8	
4	YW65016200000	Standard spring washer Q270 M-Longzine	4	
3	YW60161000000	Hexagon head bolt Q270B M16-2L F-Longzine	4	
2	YW59818000200	Hexagon head bolt Q270B M16-2L F-Longzine	1	
1	SCR-2500U-F-03	Dust bucket discharge port	1	

序号	代号	名称	材料	数量	备注
				1:14	数量 1
				材质	/
			表面要求		/
			物料号		/

					制图		版号	B	标题	SCR-2500U	图号	SCR-2500U-F-ALL
					设计		核准			旋风除尘器		
					校对							
标记	更改前	更改后	更改人	日期	审核		日期	20151015				

