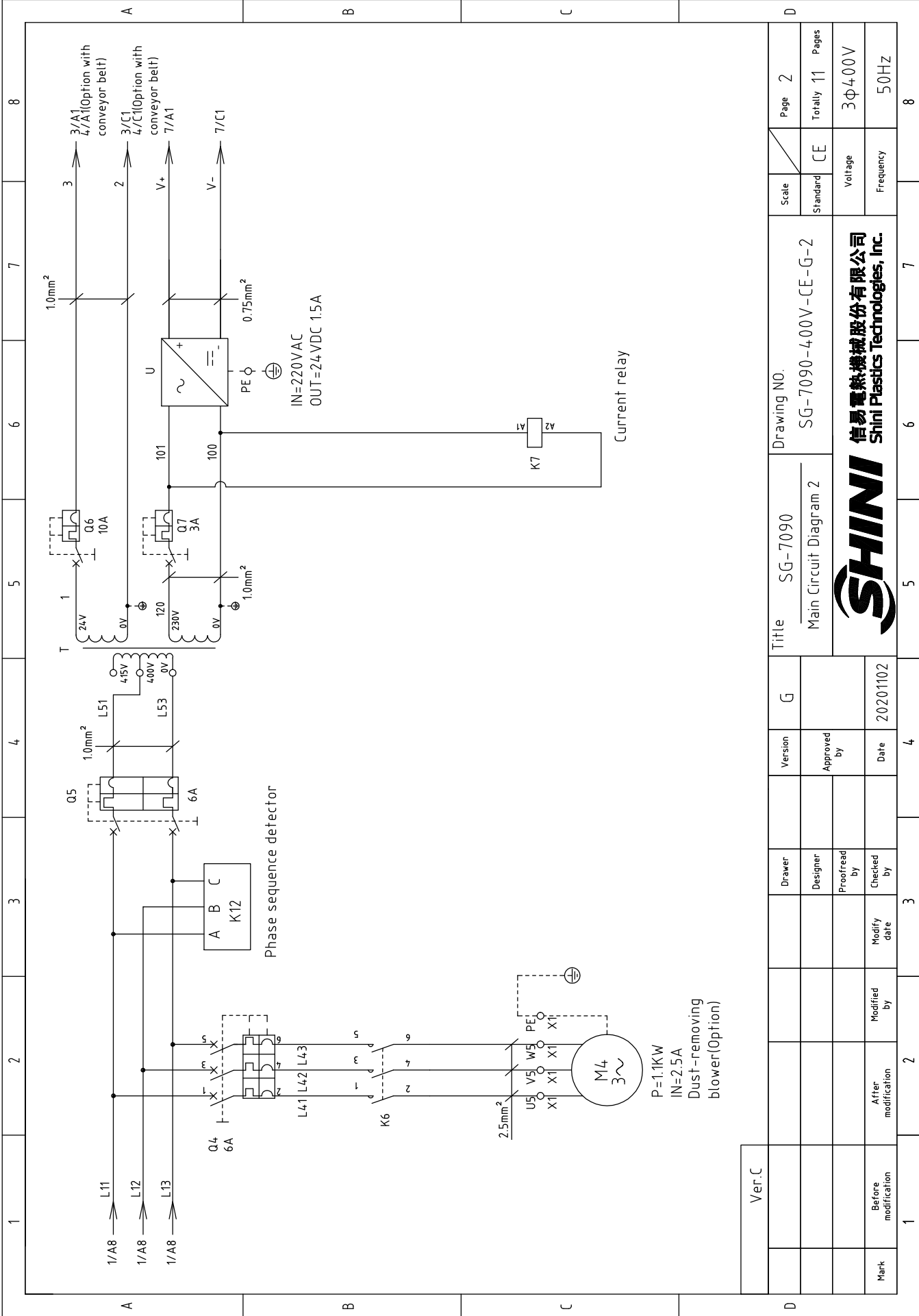
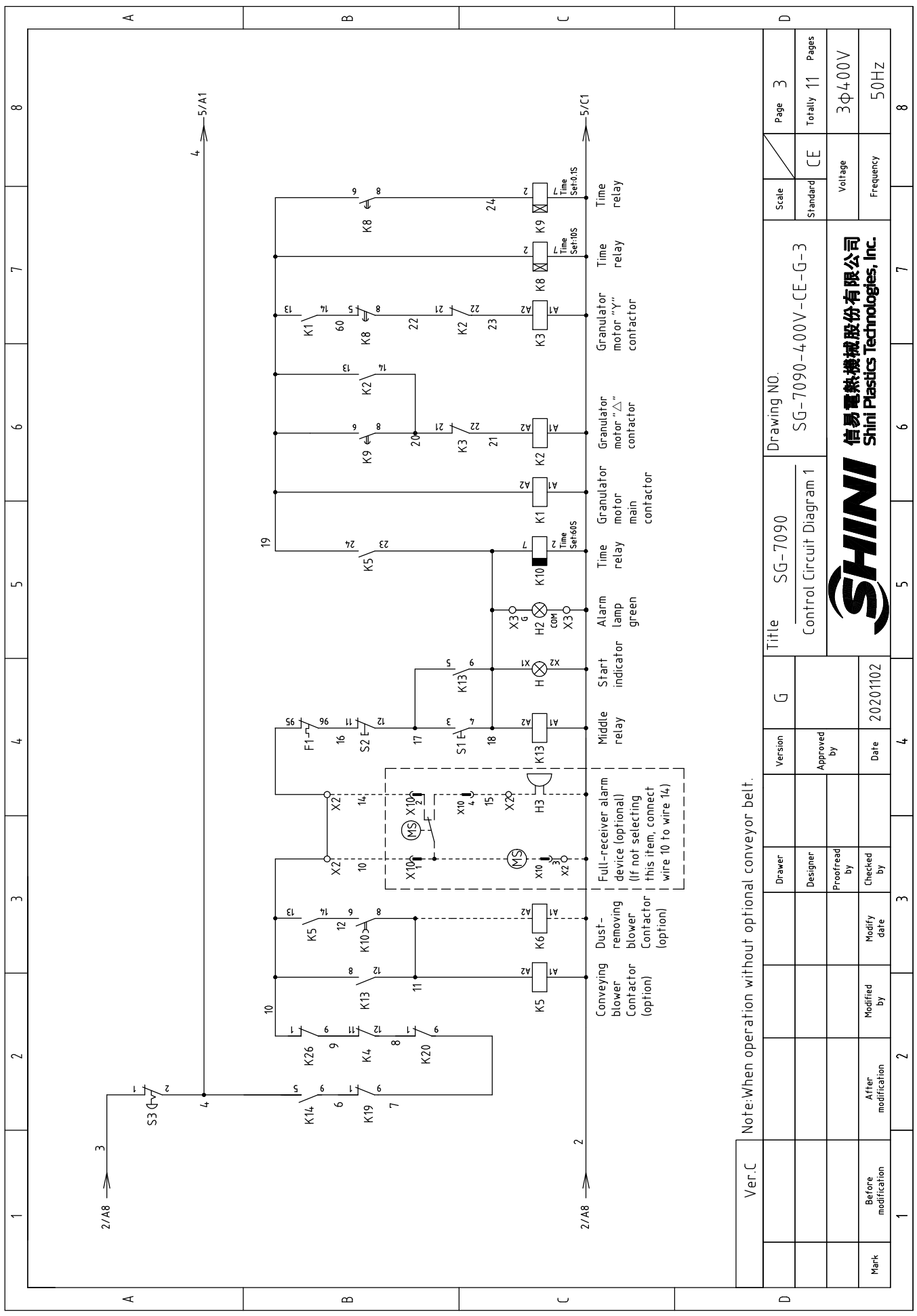


Ver.C	Title		Drawing NO.		Scale		Page 1		
	SG-7090		SG-7090-400V-CE-G-1		Standard CE		Totally 11 Pages		
Main Circuit Diagram		Version		G		Mark		Voltage	
袁锦昌		袁锦昌		20201102		Modified by		3Φ400V	
Designer		Approved by		Date		Modified date		Frequency	
Proofread by				4		After modification		50HZ	
Checked by						Before modification		8	
Mark		Modified by				After modification			



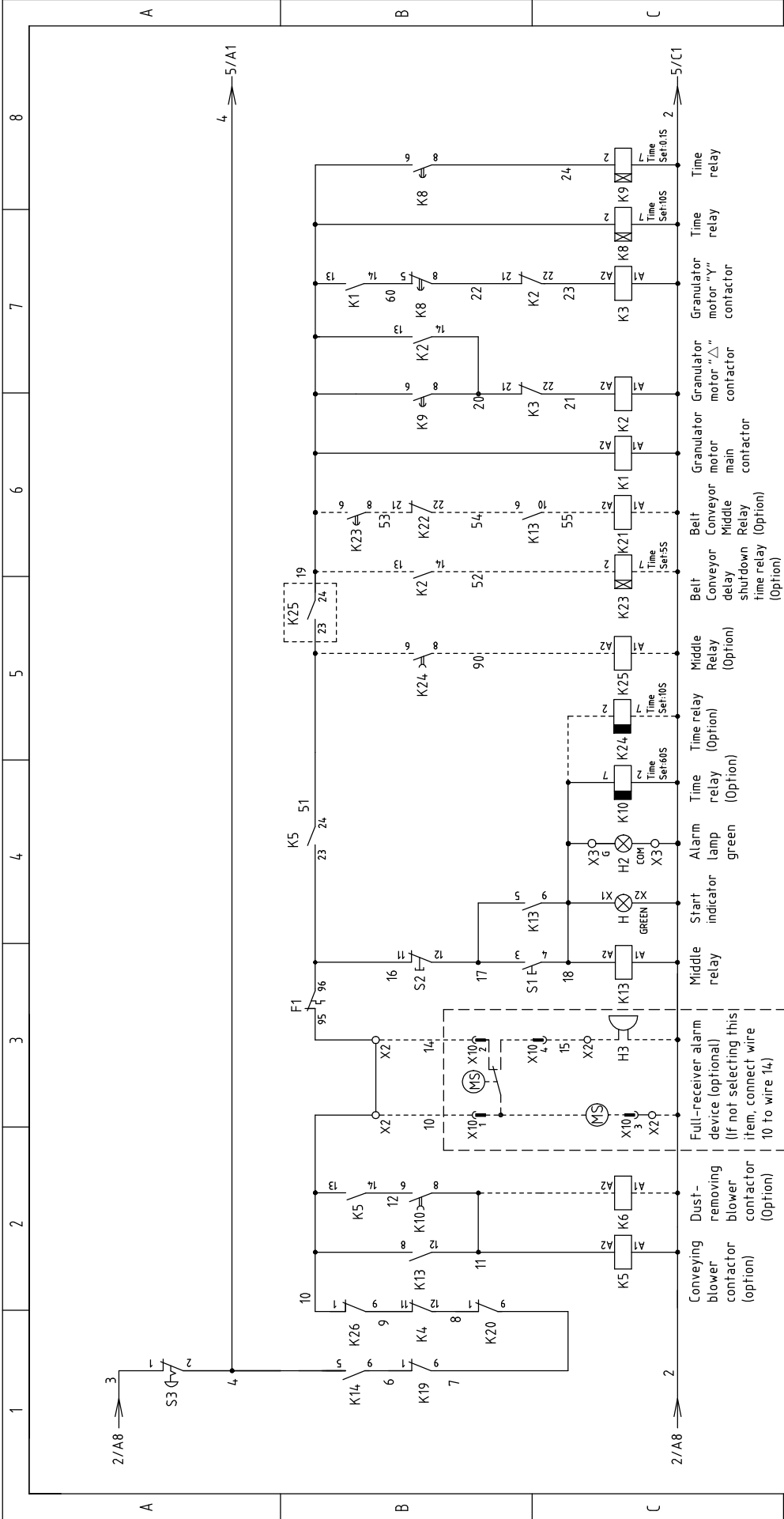


Ver.C	1	2	3	4	G	Title		Drawing NO.		Scale	Page 2
						SG-7090		SG-7090-400V-CE-G-2			
Mark	Before modification	After modification	Modified by	Modify date	Checked by	Proofread by	Designer	Date	20201102	Voltage	Frequency
<p style="text-align: center;">SHINI 信易電熱機械股份有限公司 Shini Plastics Technologies, Inc.</p>											



Ver.C	Note:When operation without optional conveyor belt.	Scale	Page 3
		Standard CE	Totally 11 Pages
Mark	Before modification	Modified by	2
	After modification	Modify date	3
	Checked by	Date	20201102
	Proofread by	Approved by	4
	Designer	Version	G
	Drawer	Title	SG-7090
		Control Circuit Diagram 1	SG-7090-400V-CE-G-3
		Drawing NO.	Page 3
		Standard	CE
		Voltage	3Φ400V
		Frequency	50Hz
			7
			6
			5
			4
			3
			2
			1

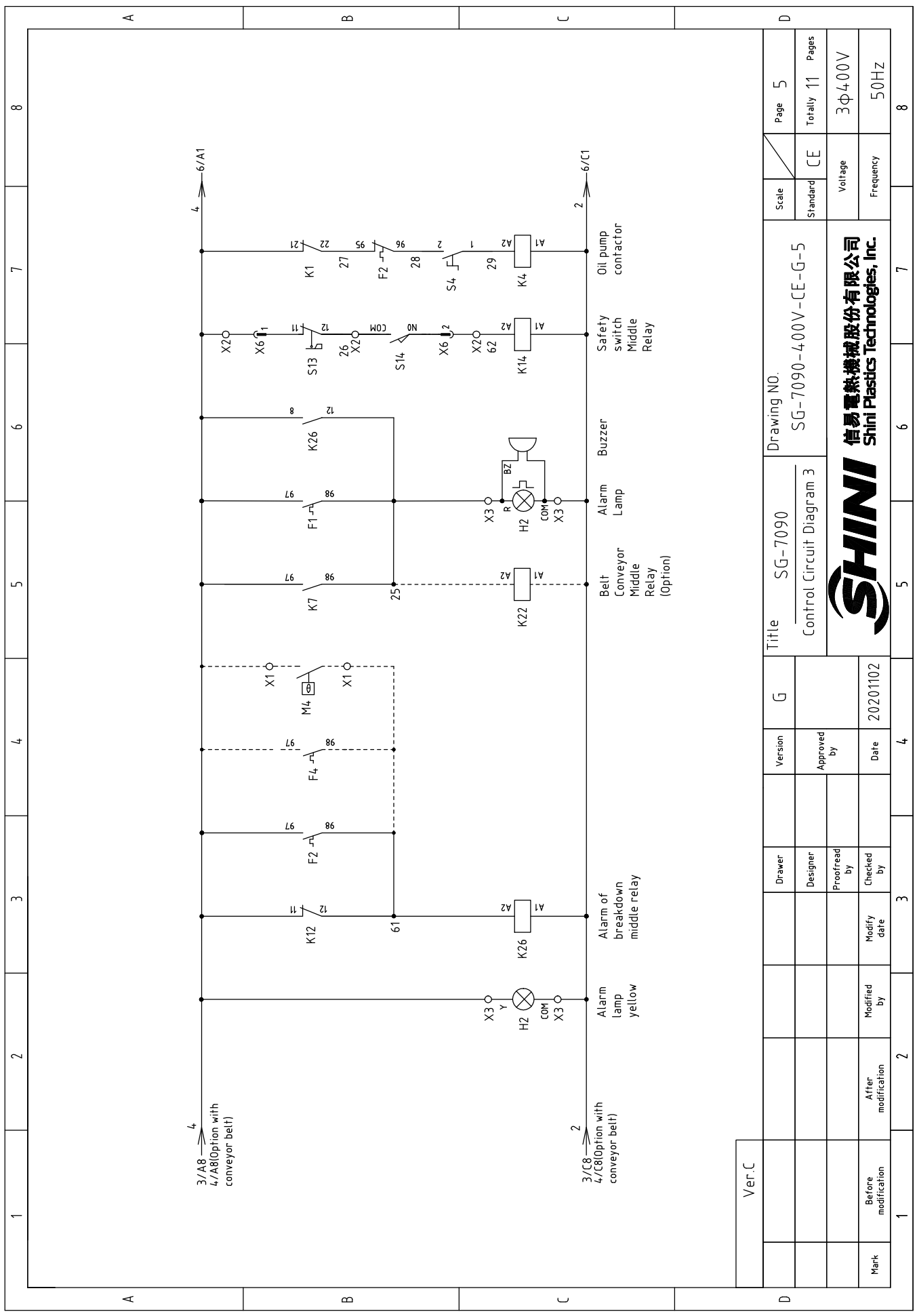




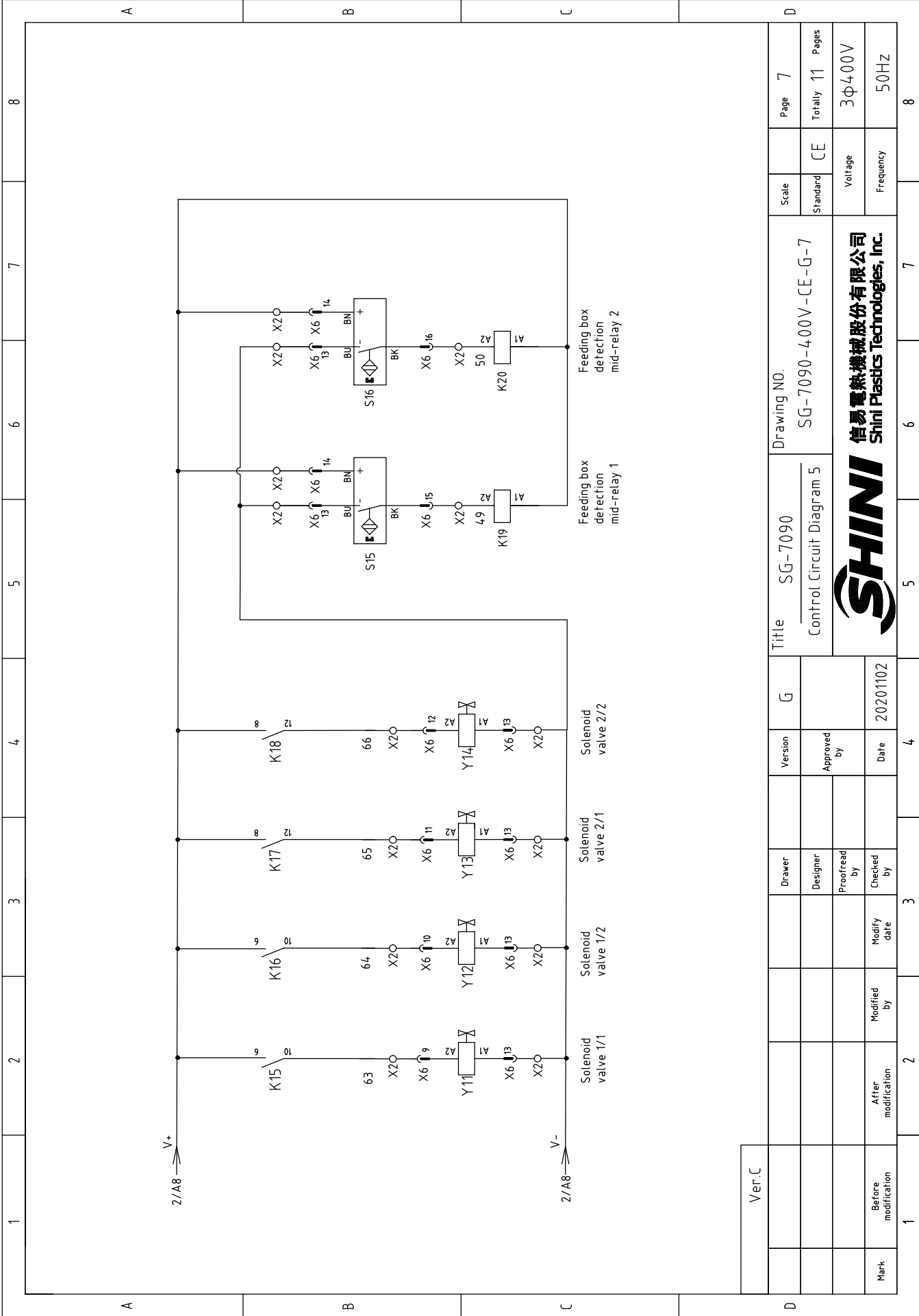
Note: Used when optional with the belt conveyor; The setting range of the K24 time relay is 0 ~ 1min.

Ver.C	1	2	3	4	5	6	7	8	Scale	Standard	CE	Page	4			
												Totally	11	Pages		
Mark	Before modification	After modification	Modified by	Modify date	Checked by	Proofread by	Designer	Drawer	Version	G	Title	SG-7090	Drawing No.	SG-7090-400V-CE-G-4	Voltage	3Φ400V
															Frequency	50Hz

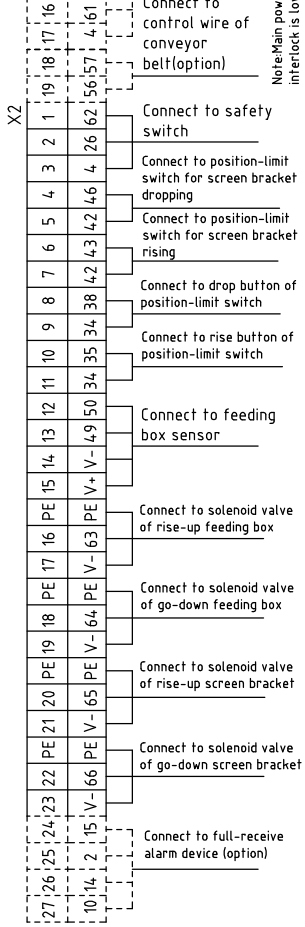
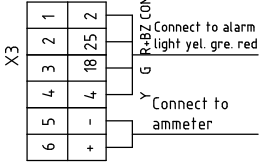
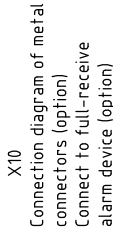
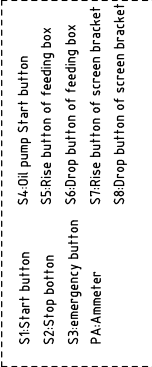
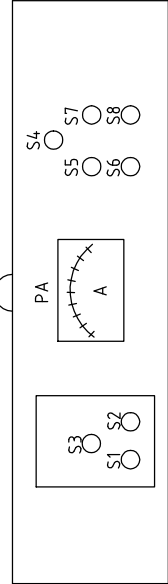
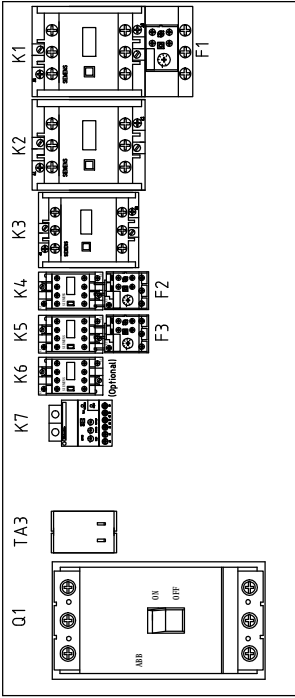
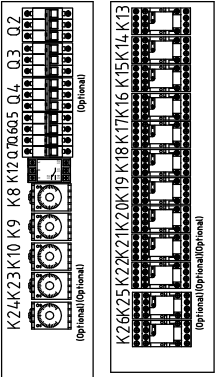
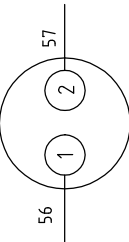
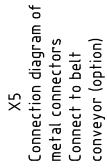
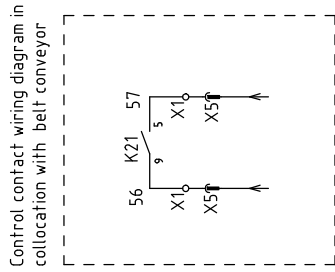
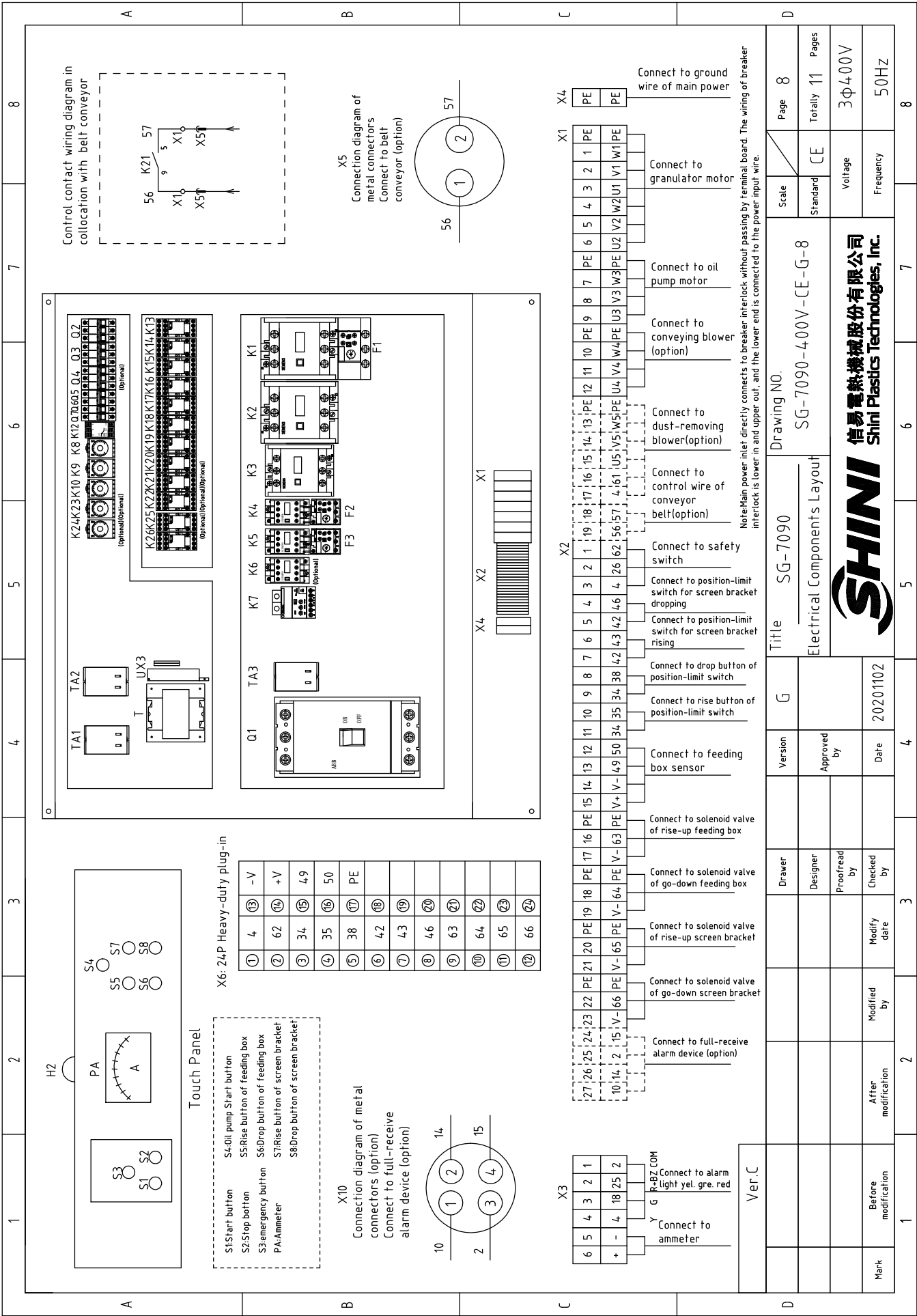
SHINI
 信易電熱機械股份有限公司
 Shini Plastics Technologies, Inc.



Ver.C	Title		Drawing No.		Scale	Page
	SG-7090		SG-7090-400V-CE-G-5		Standard	Totally 11
Mark	Control Circuit Diagram 3		Voltage		Frequency	
	20201102		3Φ400V		50Hz	
Before modification	After modification	Modified by	Checked by	Proofread by	Designer	Drawer
1	2	3	4	5	6	7
SHINI 信易電熱機械股份有限公司 Shini Plastics Technologies, Inc.						



Ver.C	Title		Drawing NO.		Scale	Page
	SG-7090		SG-7090-400V-CE-G-7		Standard	Totally 11 Pages
Control Circuit Diagram 5		Voltage		Frequency		
3Φ400V		50HZ				
SHINI		信易電熱機械股份有限公司		SHINI Plastics Technologies, Inc.		
Ver.C		Version		G		4
Designer		Approved by		Date		20201102
Proofread by		Checked by		Modify date		2
After modification		Modified by		Mark		1
Before modification		Modified by		Mark		1



Ver.C
Mark
Before modification
After modification
Modified by
Modify date
Checked by
Proofread by
Designer
Drawer
Version
G
Approved by
Date
20201102

Title	SG-7090
Electrical Components Layout	
Scale	Page 8
Standard	Totally 11 Pages
CE	CE
Voltage	3φ4.00V
Frequency	50Hz

Ver.C
Mark
Before modification
After modification
Modified by
Modify date
Checked by
Proofread by
Designer
Drawer
Version
G
Approved by
Date
20201102

SG-7090	SG-7090-400V-CE-G-8
Electrical Components Layout	
Scale	Page 8
Standard	Totally 11 Pages
CE	CE
Voltage	3φ4.00V
Frequency	50Hz



Ver.C
Mark
Before modification
After modification
Modified by
Modify date
Checked by
Proofread by
Designer
Drawer
Version
G
Approved by
Date
20201102

Title	SG-7090
Electrical Components Layout	
Scale	Page 8
Standard	Totally 11 Pages
CE	CE
Voltage	3φ4.00V
Frequency	50Hz

Ver.C
Mark
Before modification
After modification
Modified by
Modify date
Checked by
Proofread by
Designer
Drawer
Version
G
Approved by
Date
20201102

1	2		3	4	5	6	7	8
NO.	Symbol	Name	Manufacturer	Type	Specification	Number	Material number	Remark
1	Q1	Break Interlock	ABB	A2B250TMF250/25003PFF	250A	1	YE41252800000	
2	Q2	Circuit breaker	TECO	BM-63C/3P	10A	1	YE40304003000	
3	Q3	Circuit breaker	TECO	BM-63C/3P	40A	1	YE40304003000	
4	Q4	Circuit breaker	TECO	BM-63C/3P	6A	1	YE40300603000	(3)
5	Q5	Circuit breaker	TECO	BM-63C/2006S 2P	6A	1	YE40200600000	
6	Q6	Circuit breaker	TECO	BM-63C/1010S 1P	10A	1	YE40101000100	
7	Q7	Circuit breaker	TECO	BM-63C/1003S 1P	3A	1	YE40100203000	
8	K1,K2	Contacto	SIEMENS	3RT5046-1AC20	95A 24V 50/60Hz	2	YE00504602600	
9		Auxiliary contacto	SIEMENS	3RH5921-1CA01	1NC	3	YE00592110100	
10		Auxiliary contacto	SIEMENS	3RH5921-1CA10	1NO	2	YE00592110000	
11		Auxiliary contacto	SIEMENS	3RH5921-1CA10	1NO	1	YE00592110000	(2)
12	K3	Contacto	SIEMENS	3RT5045-1AC20	80A 24V 50/60Hz	1	YE00504502600	
13	K4	Contacto	SIEMENS	3RT6015-1AB02	7A 24V 50/60Hz	1	YE00601502600	
14		Auxiliary contacto	SIEMENS	3RH6911-1AA10	1NO	2	YE00691110000	
15	K5	Contacto	SIEMENS	3RT6025-1AC20	17A 24V 50/60Hz	1	YE00602502600	
16		Auxiliary contacto	SIEMENS	3RH6911-1AA10	1NO	1	YE00691110000	
17	K6	Contacto	SIEMENS	3RT6015-1AB02	7A 24V 50/60Hz	1	YE00601502600	(3)
18	K7	Current relay	SCHNEIDER	LT4706M7A	0.5-6A (220VAC)	1	YE04470600600	
19	K8	Time relay	YUYUN	TH3A-NAB	24VAC/DC 0-60S	1	YE86602400300	
20	K9	Time relay	YUYUN	TH3M-NAB	24VAC/DC 0~3S/60Min	1	YE86123000000	
21	X6	Heavy-duty plug-in	HARTING	24P+PE(male)	24P	2	YE68002406300	(1)
22		Heavy-duty plug-in	HARTING	24P+PE(female)	24P	2	YE68002407300	(1)
23	TA3	Current transformer	RATTO	RCT-35	300/5A	1	YE04133500000	
24	PA	Ammeter	SFIM	SF670	300/5A	1	YE25677300000	(1)
25	K10	Time relay	YUYUN	TRF-N	24VAC/DC 0~3Min	1	YE86032400000	
Ver.C								
Notes: (1)Means it's not the material inside the control box. (2)Stand for conveying belt optional accessories;(3)Means optional accessories of dedusting motor;(4)Optional accessories of full-receive alarm device.								
Ver.C			Version	G	Title	Drawing NO.	Scale	Page
			Designer	Approved by	SG-7090	SG-7090-400V-CE-G-9	Standard	Page 9
			Proofread by		Electrical Components List 1		CE	Totally 11 Pages
			Checked by	Date			Voltage	3Φ400V
Mark			Before modification	Modified by	20201102		Frequency	50Hz
1	2	3	4	5	6	7	8	



信易電熱機械股份有限公司
Shini Plastics Technologies, Inc.

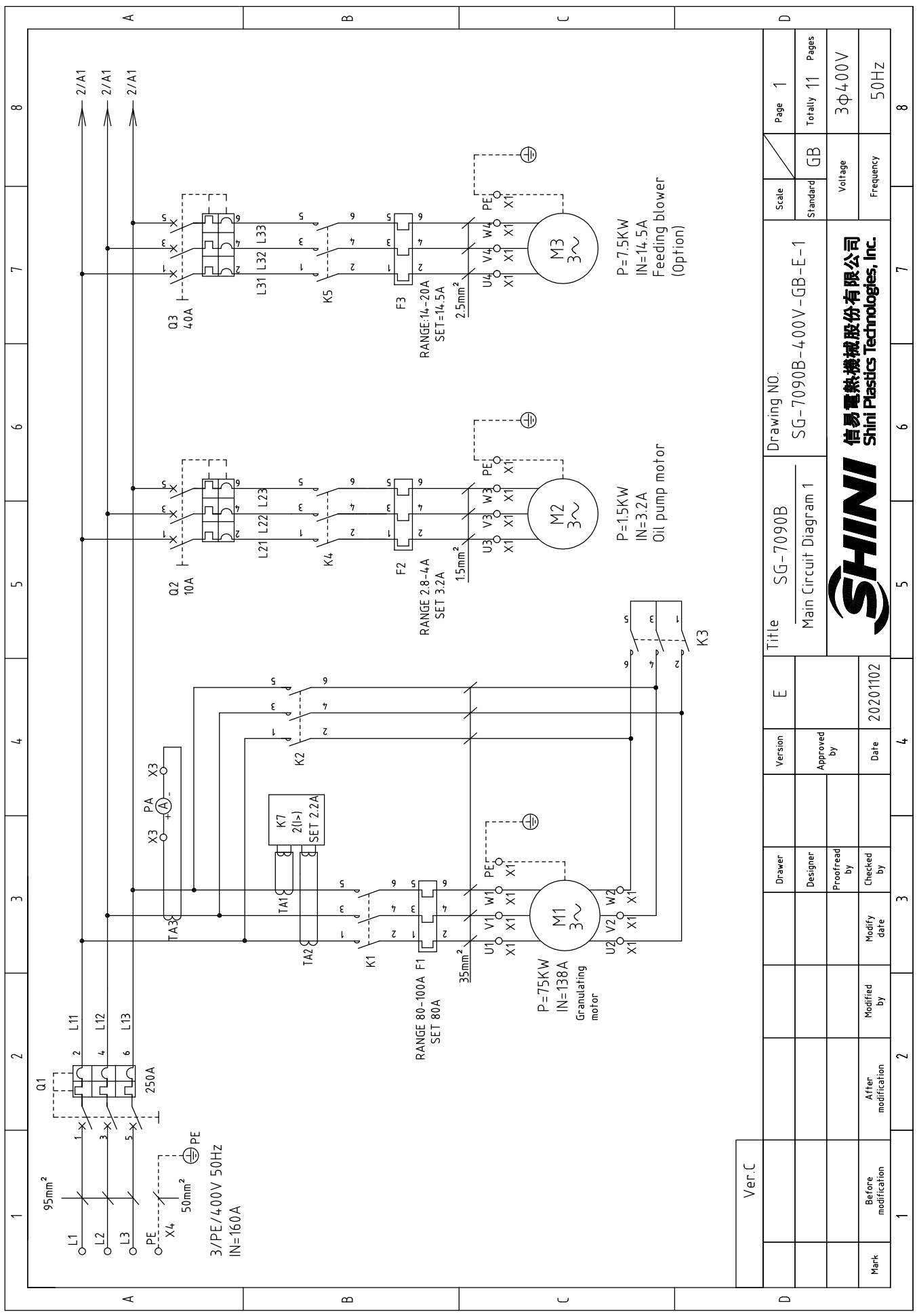
1		2		3		4		5		6		7		8	
NO.	Symbol	Name	Manufacturer	Type	Specification	Number	Material number	Remark							
26	K12	Phase disorder protector	CHAOSHI	ABJ2-12W	400V 50/60Hz	1	YE03103800000								
27	K13	Middle relay	Honeywell	GR-2C-AC24V	24VAC	1	YE03022400300								
28	K13	Middle relay	Honeywell	GR-4C-AC24V	24VAC	1	YE03042400300	(2)							
29	K14	Middle relay	Honeywell	GR-2C-AC24V	24VAC	1	YE03022400300								
30	K15 K16 K17 K18	Middle relay	Honeywell	GR-4C-AC24V	24VAC	4	YE03042400300								
31	K19,K20	Middle relay	WEIDMULLER	DRM270024LT	24VDC	2	YE03272400000								
32	K21,K22,,K25	Middle relay	Honeywell	GR-2C-AC24V	24VAC	3	YE03022400300	(2)							
33	K23	Timer relay	YUYUN	TH3A-NAB	24VAC/DC 0-60S	1	YE86602400300	(2)							
34	K24	Timer relay	YUYUN	TRF-N	24VAC/DC 0~3Min	1	YE86032400000	(2)							
35	F1	Overload relay	SIEMENS	3RU5146-4MB0	80-100A	1	YE01514680000								
36	F2	Overload relay	SIEMENS	3RU6116-1EB0	2.8-4A	1	YE01160280000								
37	F3	Overload relay	SIEMENS	3RU6126-4BB0	14-20A	1	YE01260140000								
38	H2	Three color alarm light	SHINI	Red, green, yellow lights + buzzer	24VAC/DC 50/60Hz	1	BL90002401520	(1)							
39	U	DC power	MEANWELL	EPR-35-24 1.5A	IN100-240V OUT24V	1	YE71352400100								
40	S1, S5~S8(H)	Start button(with light)	SCHNEIDER	XB2BW33MIC	400VAC	5	YE11233100000	(1)							
41	S2	Stop button	SCHNEIDER	XB2BA22C	400VAC	1	YE11222000000	(1)							
42	S3	Emergency stop button	SCHNEIDER	XB2BS542C	400VAC	1	YE11254200000	(1)							
43	S4	Selection switch	ABB	C2SS2-10B-10	Ui=300V Ith=5A	1	YE12210100000	(1)							
44	S9,S10,S11,S12	Position limit switch	SCHMERSAL	TS236-11Z-M20	500V	4	YE10361200000	(1)							
45	X10	Metal connector	APEX	PLT-254-PM	4P	1	YE68025400000	(1)(4)							
46		Metal connector	APEX	PLT-254-RF	4P	1	YE68025400100	(1)(4)							
47	X5	Metal connector	SHINI	PLT-162-RR(公)	2P	1	YE68016200100	(1)(2)							
48	H3	Buzzer	TEND	EA-2	24VAC	1	YE84240200000	(1)(4)							
49	S13	Safety switch	SCHMERSAL	AZ17-11ZK	AZ-17	1	YE16171000000	(1)							
50	T	Transfarmer	BAIYUN	IN=400V/45V OUT=24V/230V	350VA /350mA	1	YE70040007600								
Ver.C															
Notes: (1)Means it's not the material inside the control box. (2)Stand for conveying belt optional accessories;(3)Means optional accessories of dedusting motor;(4)Optional accessories of full-receive alarm device.															
Ver.C		Title		SG-7090		Drawing NO.		SG-7090-400V-CE-G-10		Scale		Page		10	
		Designer		Approved by		Electrical Components List 2				Standard		CE		Totally 11 Pages	
		Proofread by		Date		20201102				Voltage		3Φ400V			
Mark		Before modification		Modified by		Modify date				Frequency		50Hz			
1		2		3		4		5		6		7		8	



1		2		3		4		5		6		7		8	
NO.	Symbol	Name	Manufacturer	Type	Specification	Number	Material number	Remark							
51	S14	Limit switch	SCHMERSAL	ZS 336-11Z	500V	1	YE14.332100000	(1)							
52	S15,S16	Electric sensor	DELIN	DL-12	24VDC	2	YE15122400000	(1)							
53	X1	Terminal board	Honeywell	GK35	35mm ²	6	YE60003503200								
54			Honeywell	GK35PE	35mm ² PE	1	YE60003503500								
55			Honeywell	SK2.5	2.5mm ²	6	YE60002503200								
56			Honeywell	GK2.5PE	2.5mm ² PE	2	YE60002503400								
57			Honeywell	SK2.5	2.5mm ²	5	YE60002503200	(3)							
58			Honeywell	GK2.5PE	2.5mm ² PE	1	YE60002503400	(3)							
59			Honeywell	SK2.5	2.5mm ²	2	YE60002503200	(2)							
60	X2 X3	Terminal board	Honeywell	SK2.5	2.5mm ²	29	YE60002503200								
61			Honeywell	GK2.5PE	2.5mm ² PE	1	YE60002503400								
62			Honeywell	SK2.5	2.5mm ²	4	YE60002503200	(4)							
63	X4	Terminal board	NACHI	NCT-50PE	----	1	YE61005040100								
64		Terminal fittings E/GK series	Honeywell	GK series	PCS	4	YE60000003900								
65	K26	Middle relay	Honeywell	GR-2C-AC24V	24VAC	1	YE03022400300								
66	TA1,TA2	Current transformer	RATIO	RCT-35	150/5A	2	YE04150500000								
67	Y11 Y12 Y13 Y14	Solenoid Valve	----	----	24V DC	4	----	(1)							
68	M1	MoFor	----	75KW	400V 50Hz	1	----	(1)							
69	M2	Oil pump motor	----	1.5KW	400V 50Hz	1	----	(1)							
70	M3	Blower	----	7.5KW	400V 50Hz	1	----	(1)							
71	M4	Blower	----	1.1KW	400V 50Hz	1	----	(1)(3)							
72	MS	Material level switch	SIPAI	SR-80	24VAC	1	YE15802400100	(1)(4)							
<p>Notes: (1)Means it's not the material inside the control box. (2)Stand for conveying belt optional accessories;(3)Means optional accessories of dedusting motor;(4)Optional accessories of full-receive alarm device.</p>															
Ver. C		Title		SG-7090		Drawing NO.		Scale		Page		11		8	
		Electrical Components List 3		SG-7090-400V-CE-G-11		CE		Voltage		3Φ400V		Totally		11 Pages	
Mark		Before modification		Modified by		Modify date		Checked by		Date		20201102			
1		2		3		4		5		6		7		8	



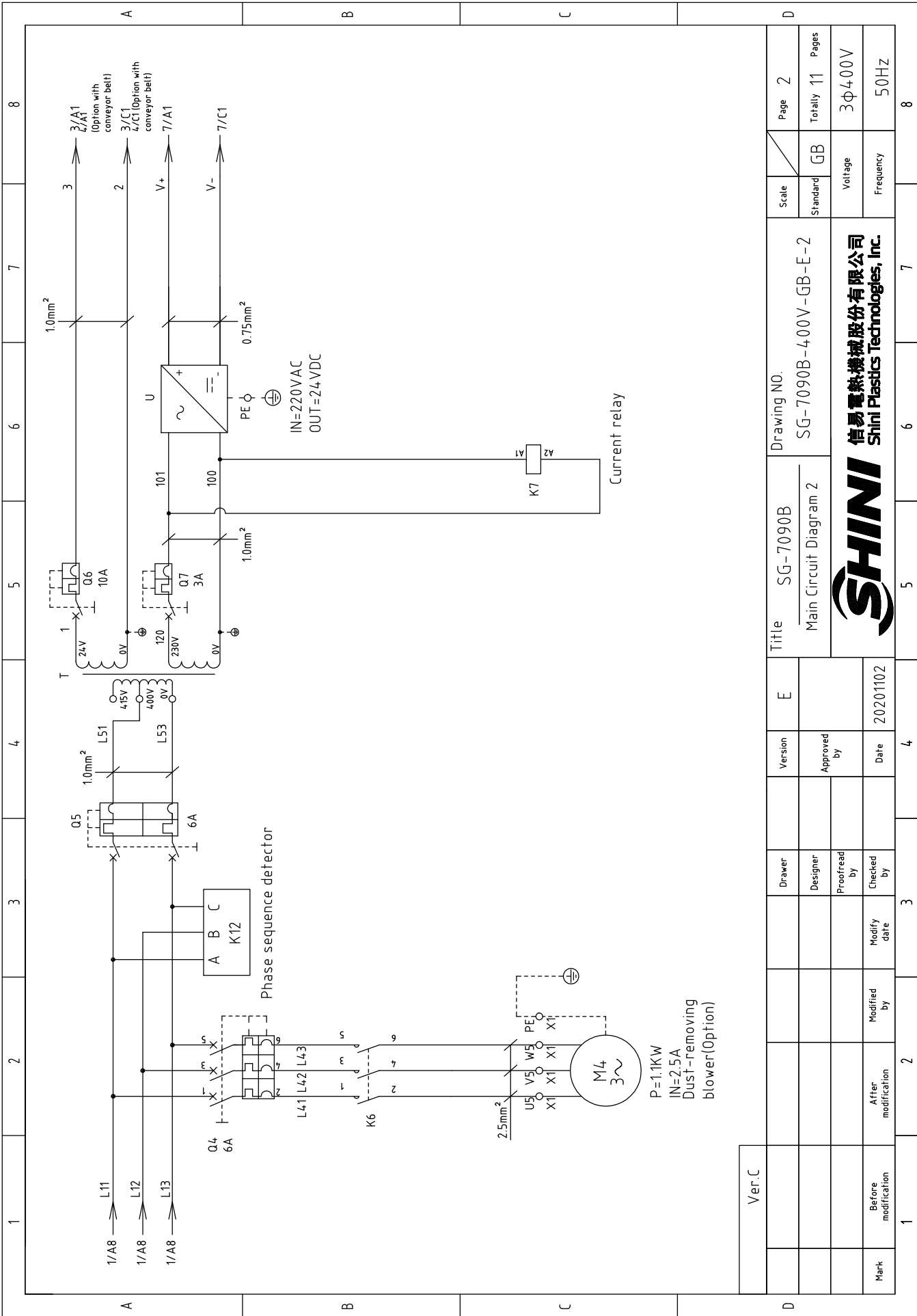
信易電熱機械股份有限公司
Shini Plastics Technologies, Inc.



Ver.C	Mark		Before modification	After modification	Date	Checked by	Proofread by	Designer	Drawer	Version	E	Title		Drawing NO.		Scale	Page 1	
	1	2	3	4								SG-7090B		SG-7090B-4.00V-GB-E-1				Standard
					20201102								GB	11	11		3Φ400V	50Hz

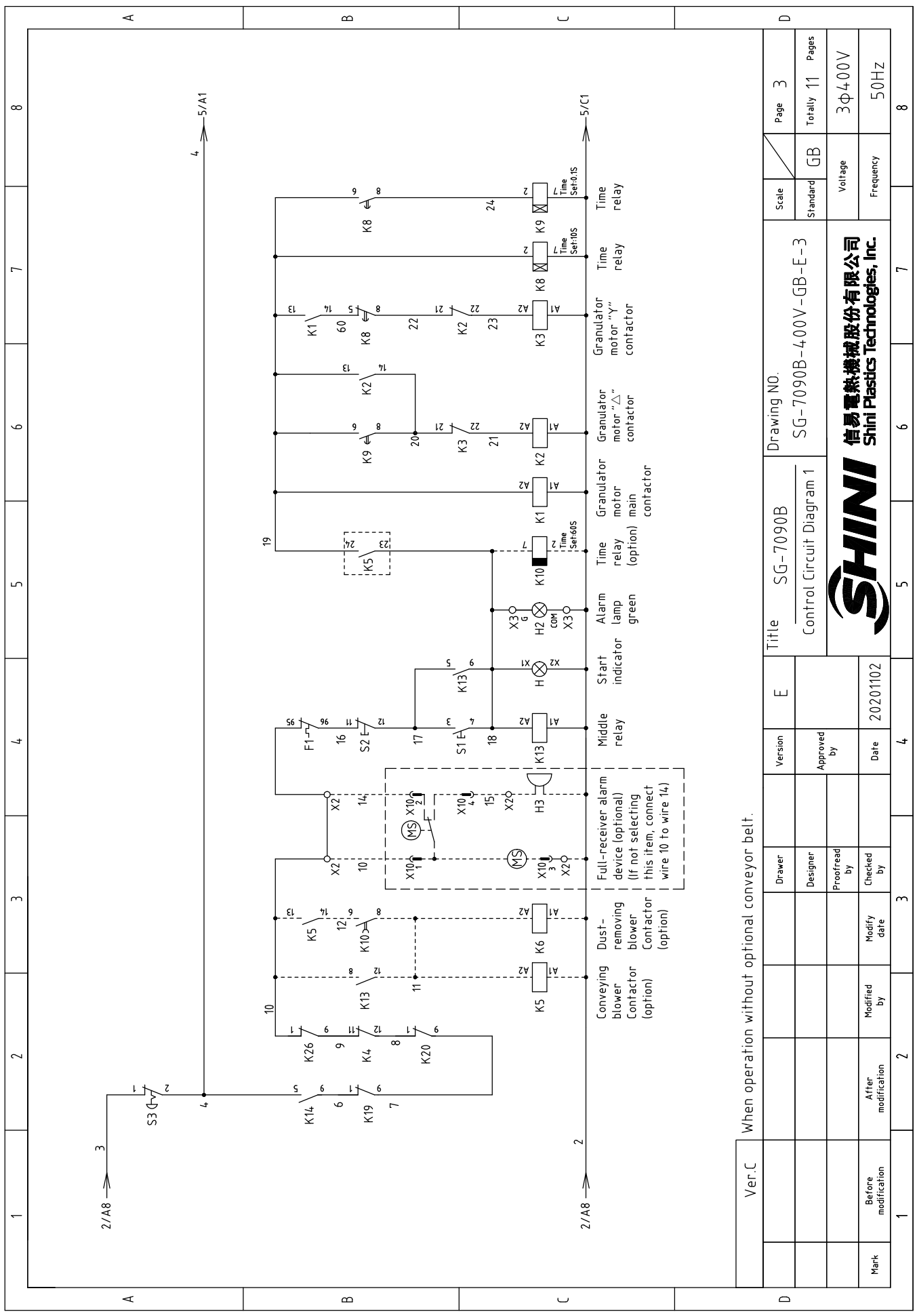



信易電熱機械股份有限公司
Shini Plastics Technologies, Inc.

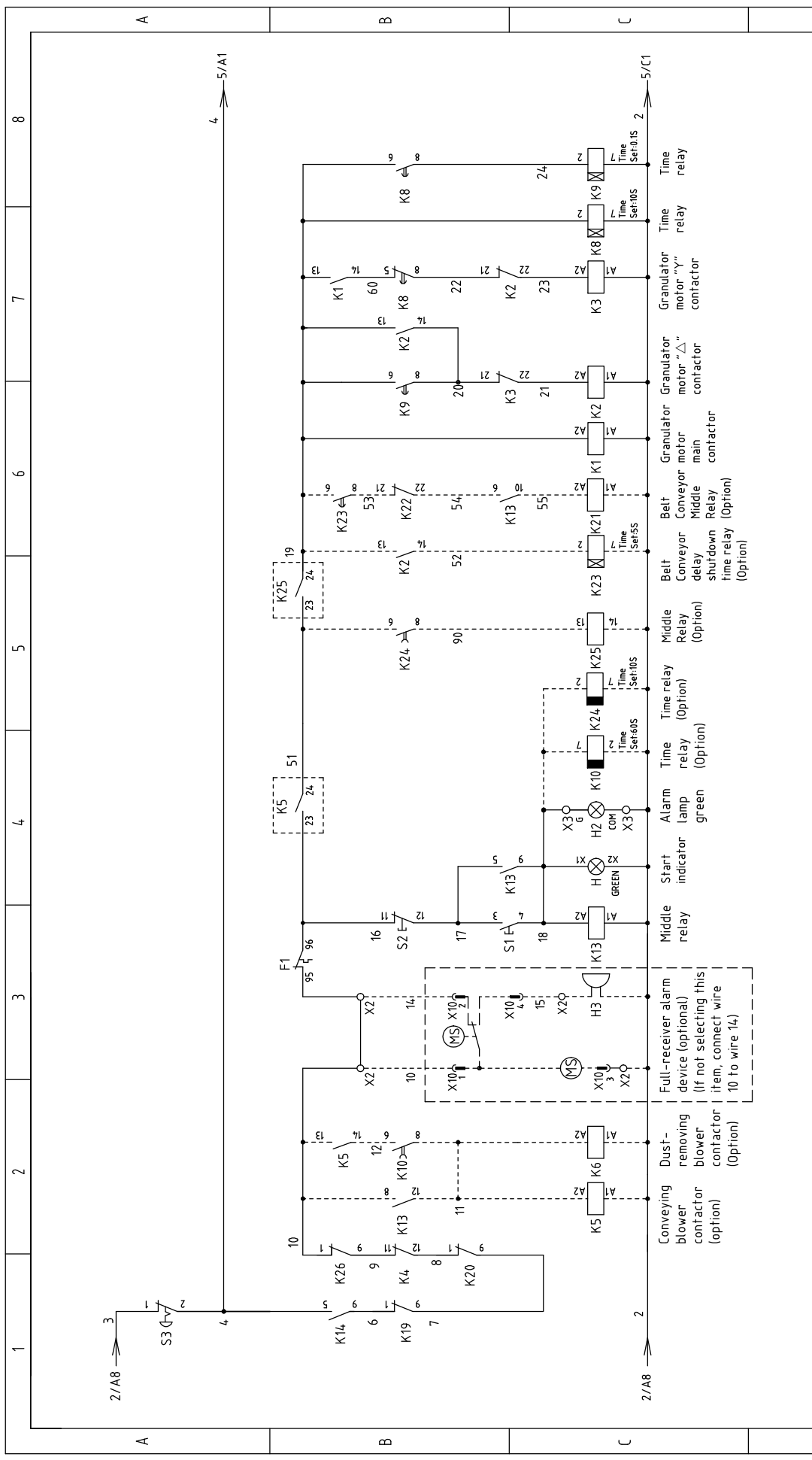


Ver.C	1		2		3		4		5		6		7		8	
	Mark	Before modification	After modification	Modified by	Modify date	Checked by	Date	Approved by	E	Version	Drawer	Designer	Proofread by	Checked by	Modify date	20201102

D	Scale	Standard	GB	Drawing NO.	SG-7090B-4.00V-GB-E-2			Page 2
		Totally	11		Pages			
Voltage	3φ400V			Frequency	50Hz			
	Title				SG-7090B Main Circuit Diagram 2			
 信易電熱機械股份有限公司 Shini Plastics Technologies, Inc.								



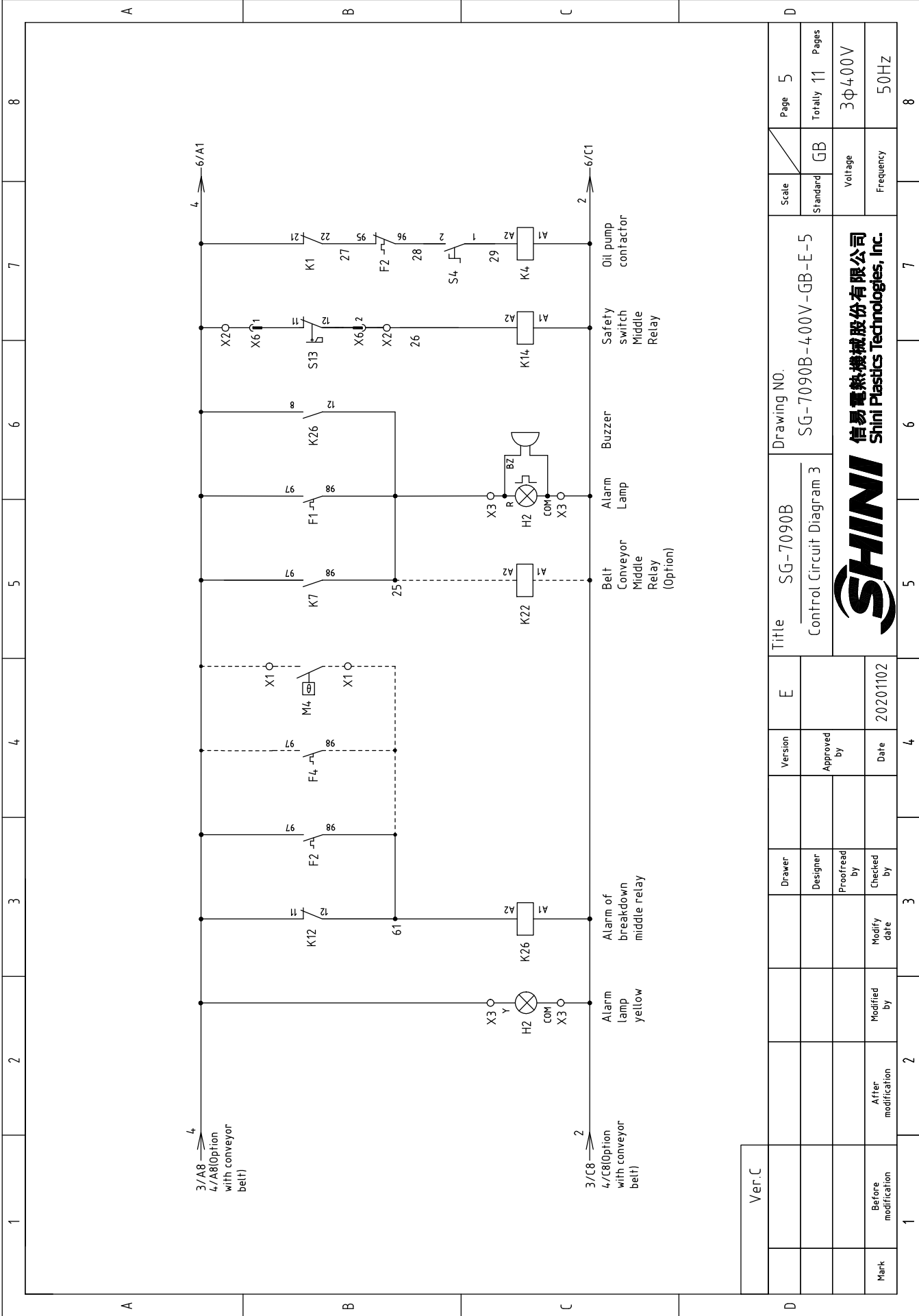
Ver.C	When operation without optional conveyor belt.			E	Title		Drawing No.		Scale	Page 3
	Drawer	Designer	Version		SG-7090B		SG-7090B-4.00V-GB-E-3			
Mark	Before modification	Modified by	Checked by	Approved by	Control Circuit Diagram 1		Voltage		Frequency	Pages
	After modification	Modify date	Date	20201102	3φ400V		50Hz			
1	2	3	4	5	6	7	8	 信易電熱機械股份有限公司 Shini Plastics Technologies, Inc.		



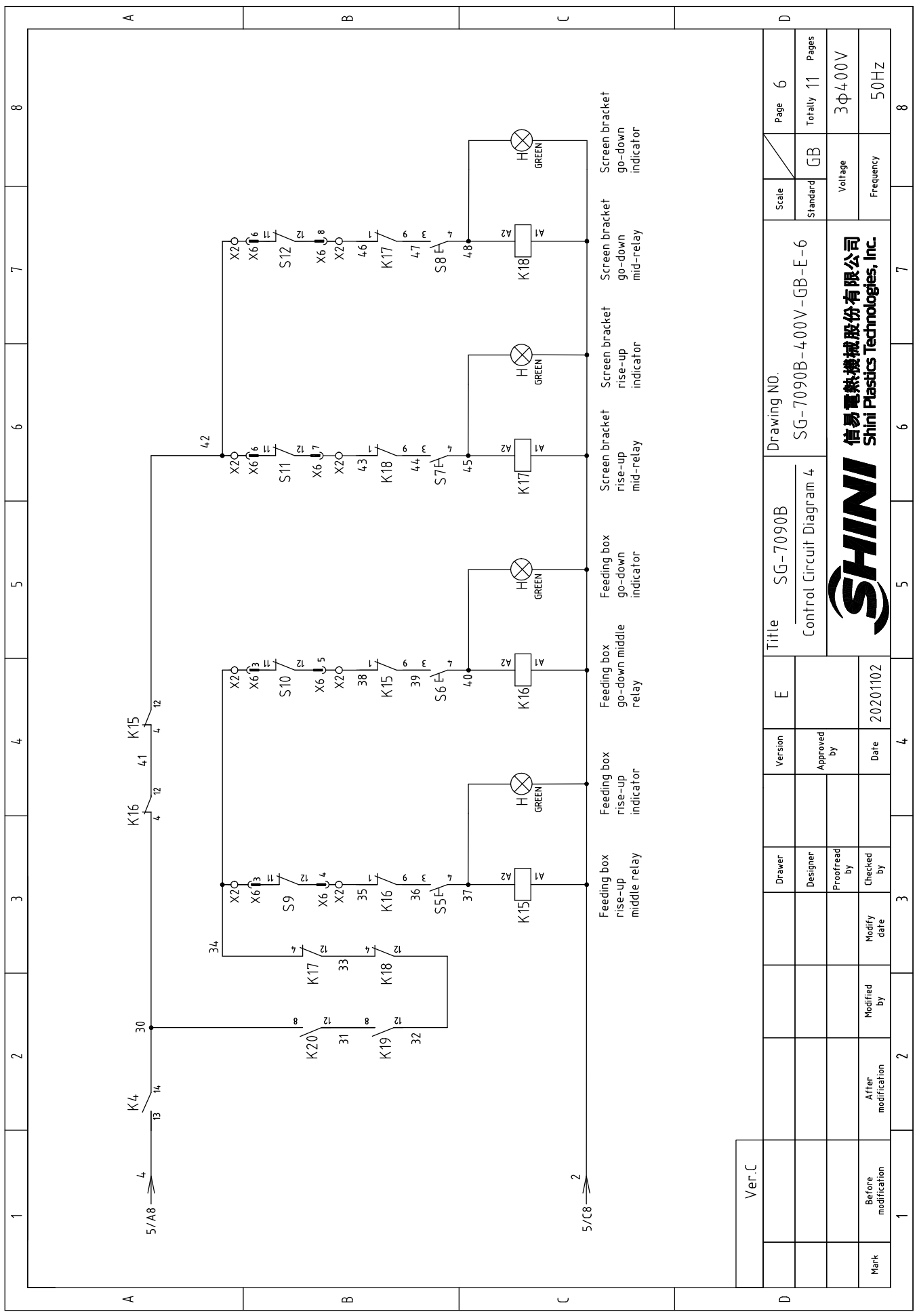
Ver.C	E	Version	Title	Drawing No.		Page
				SG-7090B	SG-7090B-400V-GB-E-4	
Mark	Before modification	Modified by	Date	Control Circuit Diagram 2		Totally 11
				20201102	Approved by	Pages
1	2	3	4	5	6	7
				Scale	Standard	GB
				Voltage		3φ400V
				Frequency		50HZ

SHINI
信易電熱機械股份有限公司
Shini Plastics Technologies, Inc.


Note: Used when optional with the belt conveyor; The setting range of the K24 time relay is 0 ~ 1min.



Ver.C	Scale	Page 5	Standard	GB	Voltage	Frequency	Totally 11	Pages	3Φ400V	50Hz	
											Standard
Title		Drawing NO.		Scale		Page		Totally		Pages	
SG-7090B		SG-7090B-4.00V-GB-E-5		GB		5		11		11	
Control Circuit Diagram 3		SHINI		信易電熱機械股份有限公司		Shini Plastics Technologies, Inc.					
Mark	Before modification	After modification	Modified by	Modify date	Checked by	Date	Approved by	Version	E	Title	
						20201102				SG-7090B	
										Control Circuit Diagram 3	
										SHINI	
										信易電熱機械股份有限公司	
										Shini Plastics Technologies, Inc.	



Ver.C	1		2		3		4		5		6		7		8	
	Mark	Before modification	After modification	Modified by	Modify date	Checked by	Date	Approved by	Version	E	Title		Drawing NO.		Scale	Page
							20201102				SG-7090B		SG-7090B-400V-GB-E-6		Standard	Totally
											Control Circuit Diagram 4		GB		Voltage	Pages
											SHINI		信易電熱機械股份有限公司		Frequency	3Φ400V
											SHINI		Shini Plastics Technologies, Inc.		50Hz	8

1	2	3	4	5	6	7	8	
1	Break Interlock	ABB	A2B250TMF250/25003PFF	250A				
2	Circuit breaker	TECO	BM-63C/3P	10A			YE4-1252800000	
3	Circuit breaker	TECO	BM-63C/3P	40A			YE40301003000	
4	Circuit breaker	TECO	BM-63C/3P	6A			YE40304003000 (2)	
5	Circuit breaker	TECO	BM-63C/2006S 2P	6A			YE40300603000 (3)	
6	Circuit breaker	TECO	BM-63C/1010S 1P	10A			YE40200600000	
7	Circuit breaker	TECO	BM-63C/1003S 1P	3A			YE40101000100	
8	K1,K2	SIEMENS	3RT5046-1AC20	95A 24V 50/60Hz			YE00504602600	
9	Auxiliary contactor	SIEMENS	3RH5921-1CA01	1NC			YE00592110100	
10	Auxiliary contactor	SIEMENS	3RH5921-1CA10	1NO			YE00592110000	
11	Auxiliary contactor	SIEMENS	3RH5921-1CA10	1NO			YE00592110000 (5)	
12	Contactor	SIEMENS	3RT5045-1AC20	80A 24V 50/60Hz			YE00504502600	
13	Contactor	SIEMENS	3RT6015-1AB02	7A 24V 50/60Hz			YE00601502600	
14	Auxiliary contactor	SIEMENS	3RH6911-1AA10	1NO			YE00691110000	
15	Contactor	SIEMENS	3RT6025-1AC20	17A 24V 50/60Hz			YE00602502600 (2)	
16	Auxiliary contactor	SIEMENS	3RH6911-1AA10	1NO			YE00691110000 (2)	
17	Contactor	SIEMENS	3RT6015-1AB02	7A 24V 50/60Hz			YE00601502600 (3)	
18	Current relay	SCHNEIDER	LT4706M7A	0.5-6A (220VAC)			YE04470600600	
19	Time relay	YUYUN	TH3A-NAB	24VAC/DC 0-60S			YE86602400300	
20	Time relay	YUYUN	TH3M-NAB	24VAC/DC 0~3S/60Min			YE866123000000	
21	Current transformer	RATTO	RCT-35	300/5A			YE04133500000	
22	Ammeter	SFIM	SF670	300/5A			YE25677300000 (1)	
23	Heavy-duty plug-in	HARTING	24P+PE(male)	24P			YE68002406300 (1)	
24	Heavy-duty plug-in	HARTING	24P+PE(female)	24P			YE68002407300 (1)	
25	Time relay	YUYUN	TRF-N	24VAC/DC 0~3Min			YE866032400000 (2)	
Ver.C								
Note: (1) means not part of control box. (2)Means accessories for material conveying blower; (3)Means optional accessories of dedusting blower; (4)Means optional accessories of full-receive alarm device; (5)Stand for conveying belt optional accessories.								
Ver.C			标题 SG-7090B		图号 SG-7090B-4.00V-GB-E-9		比例 第 9 张	
			电气元件明细表一				标准 GB 共 11 张	
			制图 袁锦昌		E		机器电压 3Φ400V	
			设计 袁锦昌		核 准		机器频率 50Hz	
			校对		日期 20201102			
更改前			更改后		更改人		日期	
1	2	3	4	5	6	7	8	
 SHINI 信易電熱機械股份有限公司 Shini Plastics Technologies, Inc.								

1	2	3	4	5	6	7	8
26	K12	Phase disorder protector	CHAOSHI	ABJ2-12W	400V 50/60Hz	1	YE03103800000
27	K13	Middle relay	Honeywell	GR-2C-AC24V	24VAC	1	YE030224-00300
28	K13	Middle relay	Honeywell	GR-4C-AC24V	24VAC	1	YE030424-00300
29	K14	Middle relay	Honeywell	GR-2C-AC24V	24VAC	1	YE030224-00300
30	K15 K16	Middle relay	Honeywell	GR-4C-AC24V	24VAC	2	YE030424-00300
31	K17 K18	Middle relay	Honeywell	GR-4C-AC24V	24VAC	2	YE030424-00300
32	K19,K20	Middle relay	WEIDMULLER	DRM270024LT	24VDC	2	YE032724-00000
33	K21,K22,K25	Middle relay	Honeywell	GR-2C-AC24V	24VAC	3	YE030224-00300
34	K23	Timer relay	YUYUN	TH3A-NAB	24VAC/DC 0-60S	1	YE866024-00300
35	K24	Timer relay	YUYUN	TRF-N	24VAC/DC 0~3Min	1	YE860324-00000
36	F1	Overload relay	SIEMENS	3RU5146-4MB0	80-100A	1	YE01514680000
37	F2	Overload relay	SIEMENS	3RU6116-1EB0	2.8-4A	1	YE01160280000
38	F3	Overload relay	SIEMENS	3RU6126-4BB0	14-20A	1	YE0126014-0000
39	K26	Middle relay	Honeywell	GR-2C-AC24V	24VAC	1	YE030224-00300
40	TA1,TA2	Current transformer	RATIO	RCT-35	150/5A	2	YE04150500000
41	T	Transformer	BAIYUN	IN=400V/415V OUT=24V/ 230V	350VA/350mA	1	YE7004-0007600
42	H2	Three-color alarm lamp	SHINI	Red, green, yellow lights + buzzer	24VAC/DC 50/60Hz	1	BL900024-01520
43	U	DC power	MEANWELL	EPR-35-24 1.5A	IN100-240V OUT24V	1	YE713524-00100
44	S1, S5-S8(H)	Start button (with light)	SCHNEIDER	XB2BW33M1C	400VAC	5	YE11233100000
45	S2	Stop button	SCHNEIDER	XB2BA22C	400VAC	1	YE11222000000
46	S3	Emergency stop button	SCHNEIDER	XB2BS542C	400VAC	1	YE11254200000
47	S4	Selection switch	ABB	C2SS2-10B-10	Ui=300V Ith=5A	1	YE12210100000
48	S9,S10,S11,S12	Position limit switch	SCHMERSAL	TS236-11Z-M20	500V	4	YE10361200000
49	Y11 Y12 Y13 Y14	Solenoid Valve	----	----	24VDC	4	----
50	X4	Terminal board	NACHI	NCT-50PE	----	1	YE6100504-0100
Note: (1) means not part of control box. (2)Means accessories for material conveying blower; (3)Means optional accessories of dedusting blower; (4)Means optional accessories of full-receive alarm device; (5)Stand for conveying belt optional accessories.							
Ver.C		制图 袁锦昌		标题 SG-7090B		图号 SG-7090B-4.00V-GB-E-10	
		设计 袁锦昌		电气元件明细表二		比例 第 10 张	
		校对				标准 GB 共 11 张	
标记 更改前		更改后		更改人		机器电压 3φ400V	
		日期		日期		机器频率 50Hz	
1	2	3	4	5	6	7	8

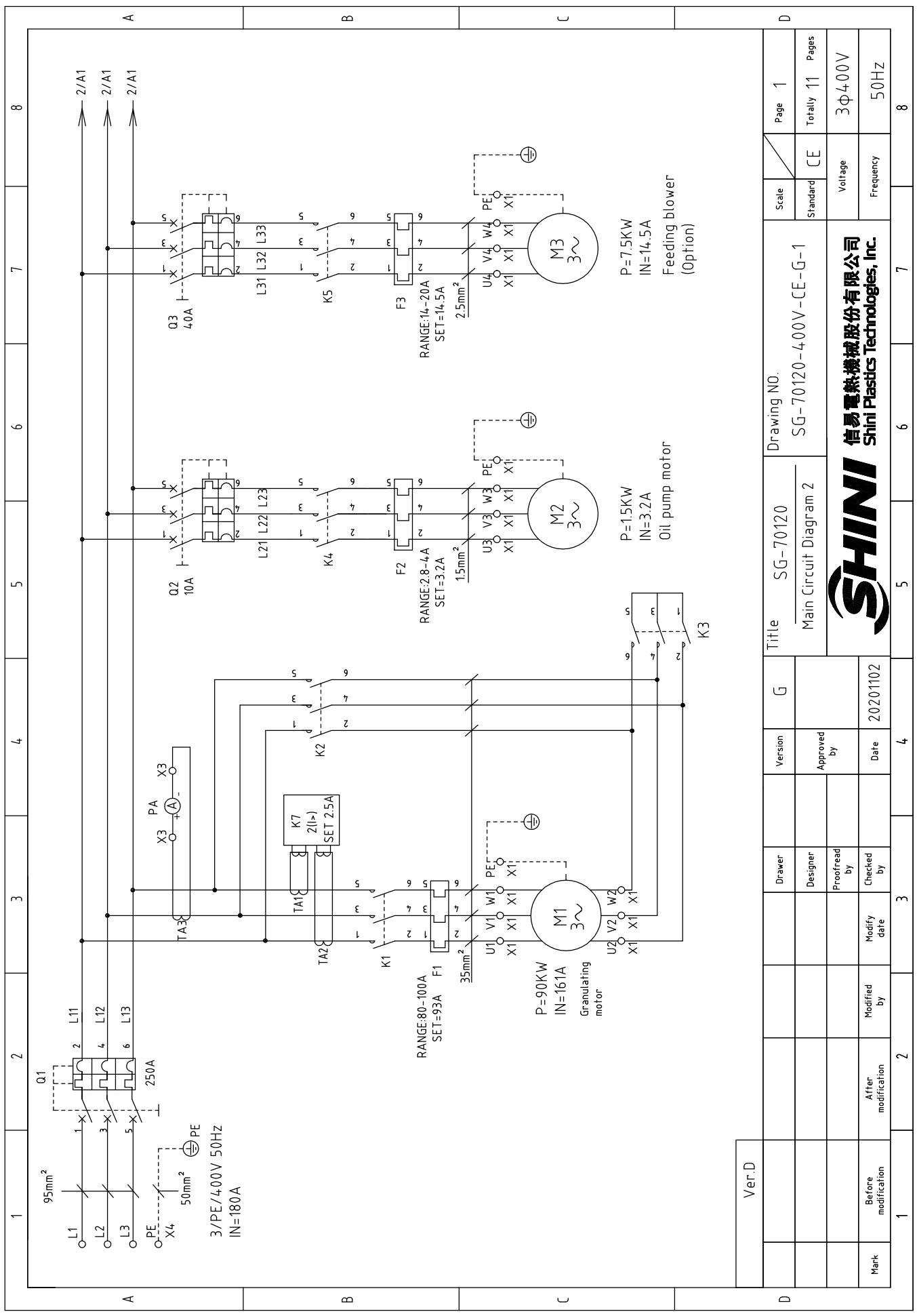


信易电热机械股份有限公司
Shini Plastics Technologies, Inc.

1	2	3	4	5	6	7	8
51	Terminal fittings E/GK series	Honeywell	GK series	PCS	4	YE6000003900	
52	Safety switch	SCHMERSAL	AZ17-11ZK	AZ-17	1	YE1617110000	(1)
53	S14, S15	DELIN	DL-12	24VDC	2	YE1512240000	(1)
54	X1	Honeywell	GK35	35mm ²	6	YE6000350320	
55		Honeywell	GK35PE	35mm ² PE	1	YE6000350350	
56		Honeywell	SK2.5	2.5mm ²	3	YE6000250320	
57		Honeywell	GK2.5PE	2.5mm ² PE	1	YE6000250340	
58		Honeywell	SK2.5	2.5mm ²	3	YE6000250320	(2)
59		Honeywell	GK2.5PE	2.5mm ² PE	1	YE6000250340	(2)
60		Honeywell	SK2.5	2.5mm ²	5	YE6000250320	(3)
61		Honeywell	GK2.5PE	2.5mm ² PE	1	YE6000250340	(3)
62		Honeywell	SK2.5	2.5mm ²	2	YE6000250320	(5)
63	X2 X3	Honeywell	SK2.5	2.5mm ²	28	YE6000250320	
64		Honeywell	GK2.5PE	2.5mm ² PE	1	YE6000250340	
65		Honeywell	SK2.5	2.5mm ²	4	YE6000250320	(4)
66	X5	SHINI	PLT-162-RR(Male)	2P	1	YE68016200100	(1)(5)
67	X10	APEX	PLT-254-PM	4P	1	YE68025400000	(1)(4)
68		APEX	PLT-254-RF	4P	1	YE68025400100	(1)(4)
69	H3	TEND	EA-2	24VAC	1	YE84240200000	(1)(4)
70	MS	SPAI	SR-80	24VAC	1	YE15802400100	(1)(4)
71	M1	-----	75KW	400V 50Hz	1	-----	(1)
72	M2	-----	1.5KW	400V 50Hz	1	-----	(1)
73	M3	-----	7.5KW	400V 50Hz	1	-----	(1)(2)
74	M4	-----	1.1KW	400V 50Hz	1	-----	(1)(3)
<p>Note: (1) means not part of control box. (2)Means accessories for material conveying blower; (3)Means optional accessories of dedusting blower; (4)Means optional accessories of full-receive alarm device; (5)Stand for conveying belt optional accessories.</p>							
Ver.C		制图		标题		图号	
		袁锦昌		SG-7090B		SG-7090B-400V-GB-E-11	
		设计		电气元件明细表三		比例	
		袁锦昌				标准 GB	
		校对				机器电压	
		审核				机器频率	
标记		更改后		更改人		更改日期	
更改前		更改后		更改人		更改日期	
		日期		20201102		3Φ400V	
		日期				50Hz	
		日期				8	

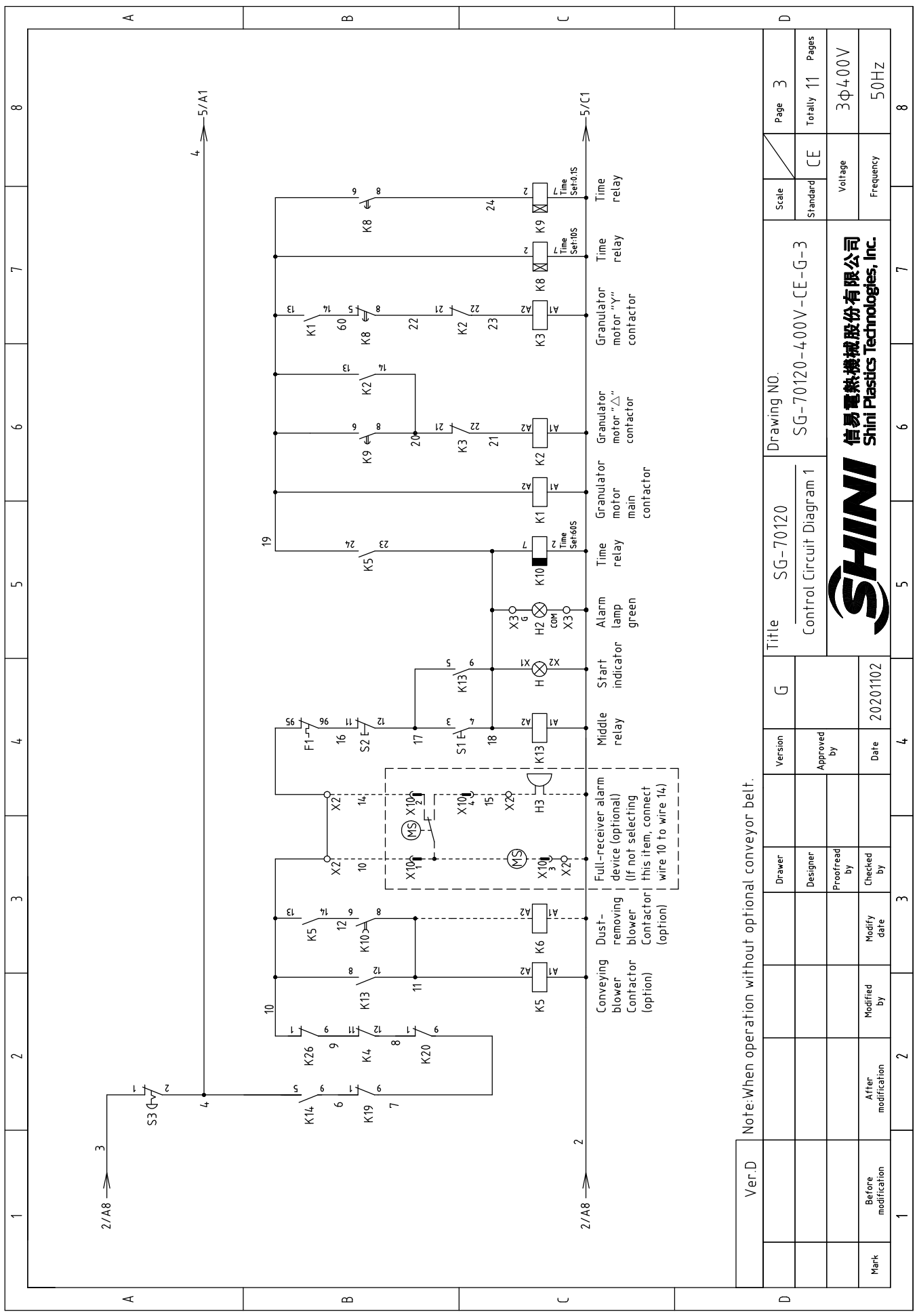


信易電熱機械股份有限公司
Shini Plastics Technologies, Inc.



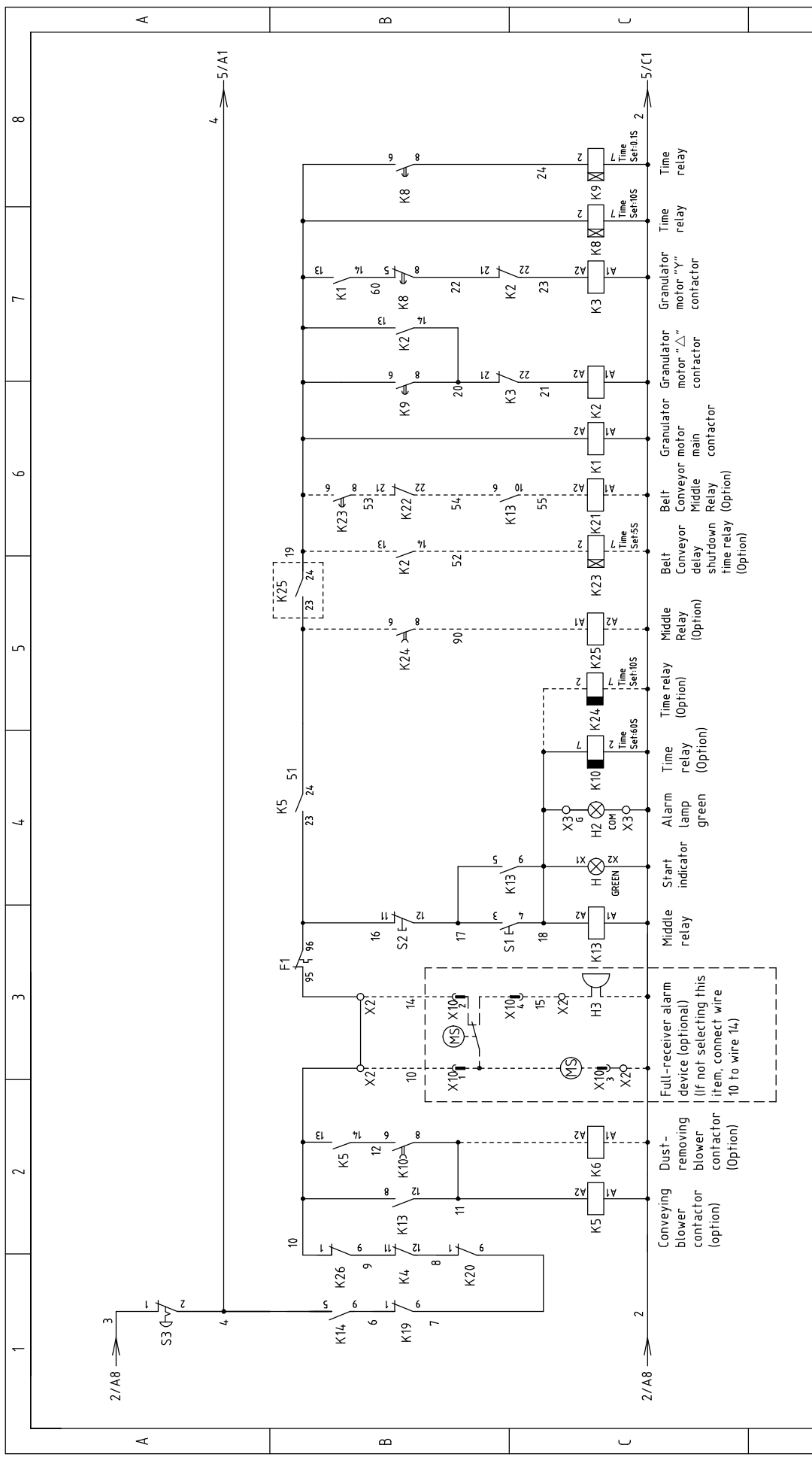
Ver.D	Title		Drawing NO.		Scale		Page		
	Main Circuit Diagram 2		SG-70120-400V-CE-G-1		CE		1		
Mark	Before modification	After modification	Modified by	Modify date	Checked by	Proofread by	Designer	Drawer	
									Date
20201102									
Total		Pages		Voltage		Frequency		8	
11		3Φ400V		50Hz					



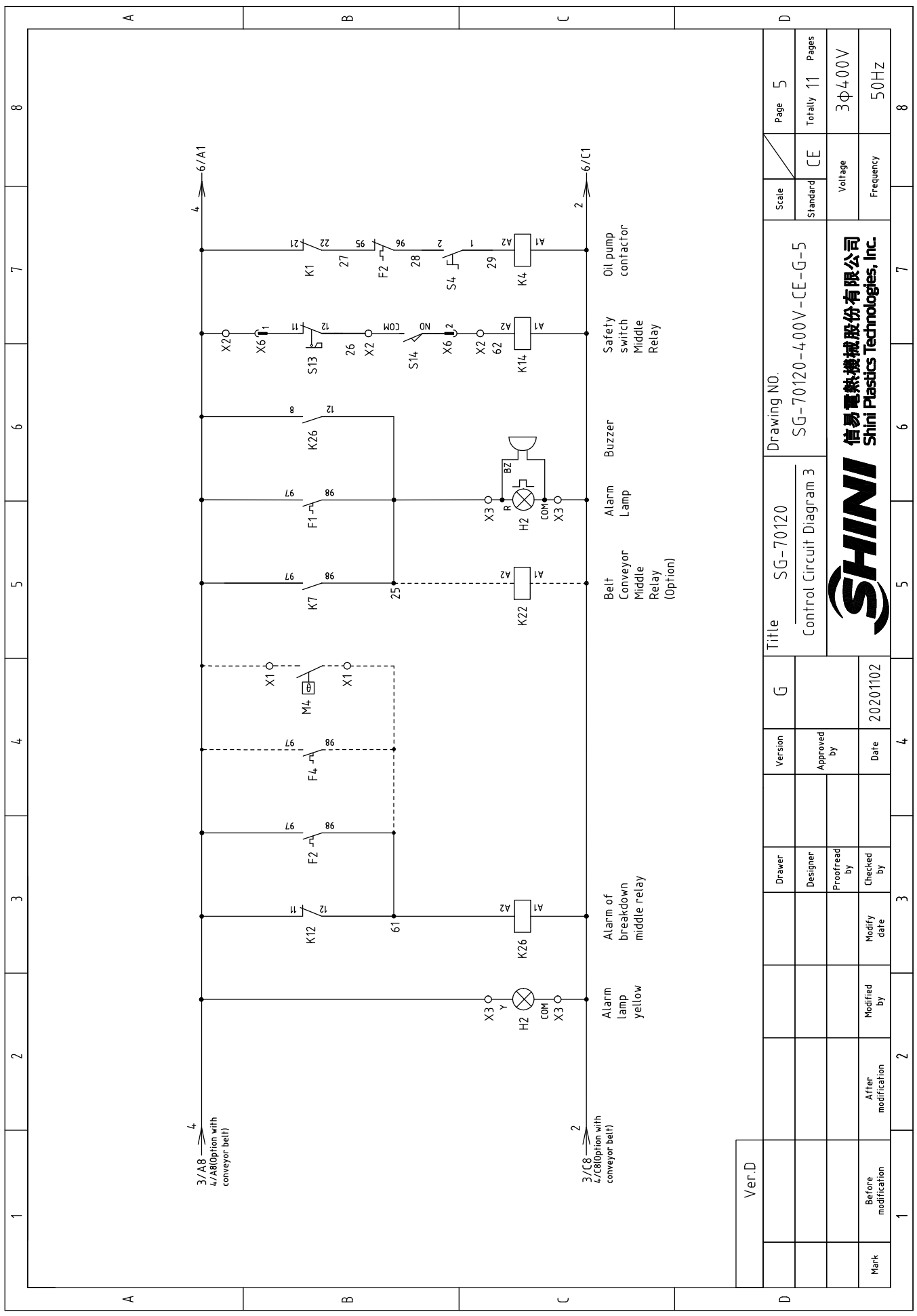


Ver.D Note:When operation without optional conveyor belt.

Ver.D	Scale	Standard	CE	Totally	11	Pages	3	
	Title		Drawing NO.		Voltage		Frequency	
	Control Circuit Diagram 1		SG-70120		SG-70120-400V-CE-G-3		3Φ400V	
	Full-receiver alarm device (optional) (if not selecting this item, connect wire 10 to wire 14)		Version		Date		50Hz	
	Dust-removing blower Contactor (option)		Approved by		20201102			
	Conveying blower Contactor (option)		Date		4			
Mark	Before modification	After modification	Modified by	Modify date				
	1	2	3	4	5	6	7	
	SHINI 信易電熱機械股份有限公司 Shini Plastics Technologies, Inc.							8

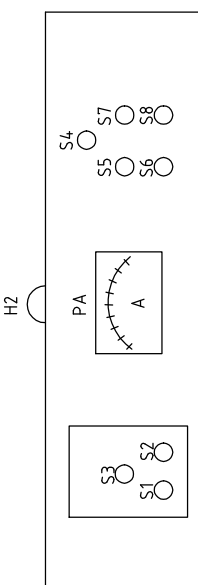
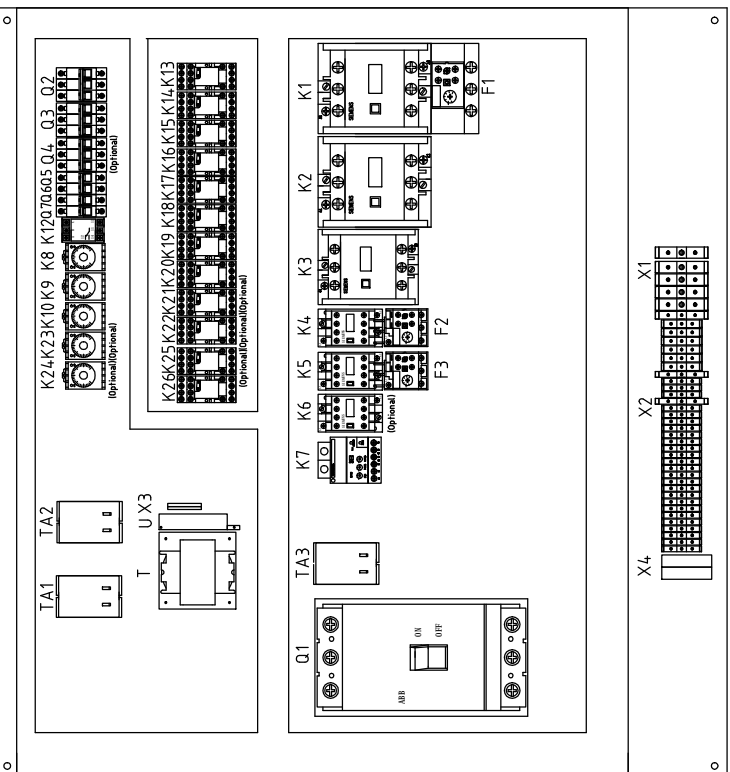
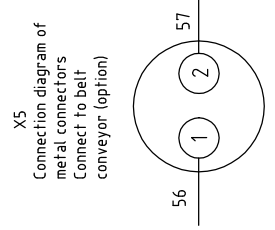
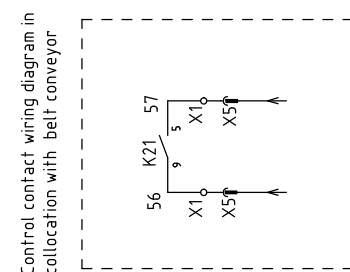


Ver.D	G	Version	Title	Drawing No.		Page
				SG-70120	SG-70120-400V-CE-G-4	
Mark	Before modification	Modified by	Date	Control Circuit Diagram 2		Totally 11
				20201102	CE	Pages
						3Φ400V
						50HZ
1	2	3	4	5	6	7
<p>Note: Used when optional with the belt conveyor; The setting range of the K24 time relay is 0 ~ 1min.</p>						
信易電熱機械股份有限公司 Shini Plastics Technologies, Inc.						
Voltage Frequency						
3Φ400V 50HZ						

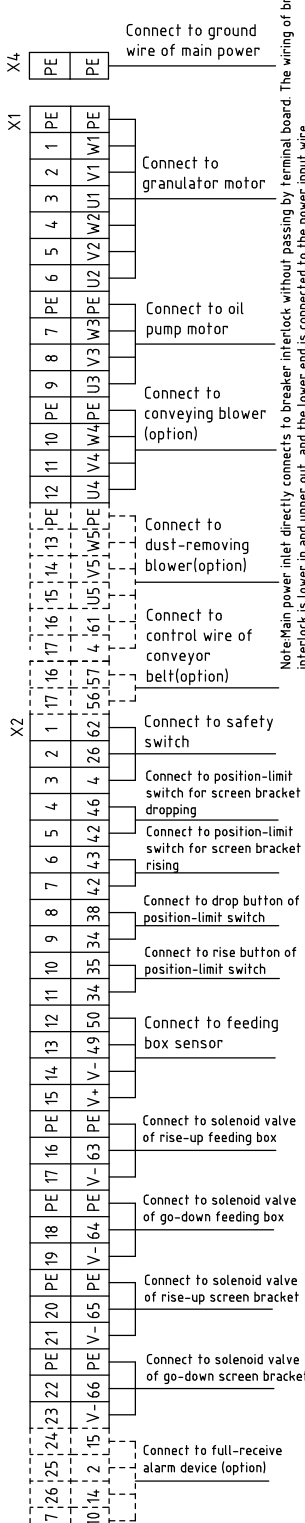
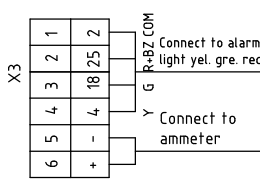
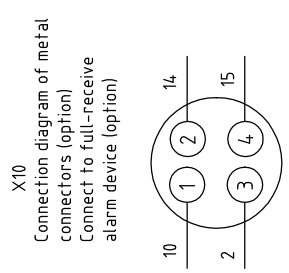


Ver.D	G	Title	Drawing No.	Scale	Page
				Standard	Totally
		SG-70120	SG-70120-400V-CE-G-5	CE	11
		Control Circuit Diagram 3		Voltage	3φ400V
				Frequency	50Hz
Mark	Before modification	After modification	Modified by	Checked by	Date
1	2	3	4	5	8

SHINI
 信易電熱機械股份有限公司
 Shini Plastics Technologies, Inc.



- X6: 24P Heavy-duty plug-in
- | | | | | | | | | | | | |
|----|----|----|----|----|----|----|----|----|----|----|----|
| ① | ② | ③ | ④ | ⑤ | ⑥ | ⑦ | ⑧ | ⑨ | ⑩ | ⑪ | ⑫ |
| 4 | 62 | 34 | 35 | 38 | 42 | 43 | 46 | 63 | 64 | 65 | 66 |
| -V | +V | 49 | 50 | PE | | | | | | | |
- S1 Start button
 - S2 Stop button
 - S3 emergency button
 - PA Ammeter
 - S4 Oil pump Start button
 - S5 Rise button of feeding box
 - S6 Drop button of feeding box
 - S7 Rise button of screen bracket
 - S8 Drop button of screen bracket



Note: Main power inlet directly connects to breaker interlock without passing by terminal board. The wiring of breaker interlock is lower in and upper out, and the lower end is connected to the power input wire.

Ver.D	G	Version	G	Title		Scale		Page 8
				SG-70120	SG-70120-400V-CE-G-8	Standard	CE	
Mark	Before modification	Modified by	Date	Electrical Components Layout		Voltage		3Φ400V
				20201102	20201102	Frequency	50HZ	
1	2	3	4	5	6	7	8	8



1	2		3	4	5	6	7	8
NO.	Symbol	Name	Manufacturer	Type	Specification	Number	Material number	Remark
1	Q1	Break Interlock	ABB	A3N400TMF320/32003PFF	320A	1	YE41503400000	Delete
2	Q1	Break Interlock	ABB	A2B250TMF250/25003PFF	250A	1	YE41252800000	New
3	Q2	Circuit breaker	TECO	BM-63C/3P	10A	1	YE40301003000	
4	Q3	Circuit breaker	TECO	BM-63C/3P	40A	1	YE40304003000	
5	Q4	Circuit breaker	TECO	BM-63C/3P	6A	1	YE40300603000	(3)
6	Q5	Circuit breaker	TECO	BM-63C/2006S 2P	6A	1	YE40200600000	
7	Q6	Circuit breaker	TECO	BM-63C/1010S 1P	10A	1	YE40101000100	
8	Q7	Circuit breaker	TECO	BM-63C/1003S 1P	3A	1	YE40100203000	
9	K1,K2	Contactor	SIEMENS	3RT5054-1AB36	115A 24VAC 50/60Hz	2	YE00505400900	
10	K3	Contactor	SIEMENS	3RT5046-1AC20	95A 24V 50/60Hz	1	YE00504602600	
11		Auxiliary contactor	SIEMENS	3RH5921-1CA01	1NC	1	YE00592110100	
12	K4	Contactor	SIEMENS	3RT6015-1AB02	7A 24V 50/60Hz	1	YE00601502600	
13		Auxiliary contactor	SIEMENS	3RH6911-1AA10	1NO	2	YE00691110000	
14	K5	Contactor	SIEMENS	3RT6025-1AC20	17A 24V 50/60Hz	1	YE00602502600	
15		Auxiliary contactor	SIEMENS	3RH6911-1AA10	1NO	1	YE00691110000	
16	K6	Contactor	SIEMENS	3RT6015-1AB02	7A 24V 50/60Hz	1	YE00601502600	(3)
17	X4	Terminal board	NACHI	NCT-50PE	----	1	YE61005040100	
18		Terminal fittings E/GK series	Honeywell	GK series	PCS	4	YE60000003900	
19	S15,S16	Electric sensor	DELIN	DL-12	24VDC	2	YE15122400000	(1)
20	TA3	Current relay	RATTO	RCT-35	300/5A	1	YE04133500000	
21	PA	Ammeter	SFIM	SF670	300/5A	1	YE25677300000	(1)
22	X6	Heavy-duty plug-in	HARTING	24P+PE(male)	24P	2	YE68002406300	(1)
23		Heavy-duty plug-in	HARTING	24P+PE(female)	24P	2	YE68002407300	(1)
24	K10	Time relay	YUYUN	TRF-N	24VAC/DC 0~3Min	1	YE86032400000	
25	K12	Phase disorder protector	CHAOSHI	ABJ2-12W	400V 50/60Hz	1	YE03103800000	
Ver.D		Notes: (1)Means it's not the material inside the control box (2)Stand for conveying belt optional accessories;(3)Means optional accessories of dedusting motor;(4)Optional accessories of full-receive alarm device.		Title SG-70120		Drawing NO. SG-70120-400V-CE-G-9		Scale
		Drawer	Version	G	Standard	CE	Voltage	Page 9
		Designer	Approved by	Electrical Components List 1	Totally	11	Pages	
		Proofread by	Date	20201102	Frequency	3Φ400V	50Hz	
Mark	Before modification	After modification	Modified by	Date	20201102	3	4	8



信易電熱機械股份有限公司
Shini Plastics Technologies, Inc.

1	2		3	4	5	6	7	8
NO.	Symbol	Name	Manufacturer	Type	Specification	Number	Material number	Remark
26	K13	Middle relay	Honeywell	GR-2C-AC24V	24VAC	1	YE03022400300	
27	K13	Middle relay	Honeywell	GR-4C-AC24V	24VAC	1	YE03042400300	(2)
28	K14	Middle relay	Honeywell	GR-2C-AC24V	24VAC	1	YE03022400300	
29	K15 K16 K17 K18	Middle relay	Honeywell	GR-4C-AC24V	24VAC	4	YE03042400300	
30	K19,K20	Middle relay	WEIDMULLER	DRM270024LT	24VDC	2	YE03272400000	
31	K21,K22,K25	Middle relay	Honeywell	GR-2C-AC24V	24VAC	3	YE03022400300	(2)
32	K23	Timer relay	YUYUN	TH3A-NAB	24VAC/DC 0-60S	1	YE86602400300	(2)
33	K24	Timer relay	YUYUN	TRF-N	24VAC/DC 0~3Min	1	YE86032400000	(2)
34	F1	Overload relay	SIEMENS	3UA60402X	80-110A	1	YE01801100000	
35	F2	Overload relay	SIEMENS	3RU6116-1EB0	2.8-4A	1	YE01160280000	
36	F3	Overload relay	SIEMENS	3RU6126-4BB0	14-20A	1	YE01260140000	
37	K26	Middle relay	Honeywell	GR-2C-AC24V	24VAC	1	YE03022400300	
38	TA1,TA2	Current transformer	RATIO	RCT-35	150/5A	2	YE04150500000	
39	T	Transformarmer	BAIYUN	IN=400V/415V OUT=24V/ 230V	350VA/350mA	1	YE70040007600	
40	X10	Metal connector	APEX	PLT-254-PM	4P	1	YE68025400000	(1)(4)
41		Metal connector	APEX	PLT-254-RF	4P	1	YE68025400100	(1)(4)
42	H2	Three color alarm light	SHINI	Red, green, yellow lights + buzzer	24VAC/DC 50/60Hz	1	BL90002401520	(1)
43	U	DC power	MEANWELL	EPR-35-24 1.5A	IN100-240V OUT24V	1	YE71352400100	
44	S1, S5~S8(H)	Start button(with light)	SCHNEIDER	XB2BW33M1C	400VAC	5	YE11233100000	(1)
45	S2	Stop botton	SCHNEIDER	XB2BA22C	400VAC	1	YE11222000000	(1)
46	S3	Emergency stop button	SCHNEIDER	XB2BS542C	400VAC	1	YE11254200000	(1)
47	S4	Selection switch	ABB	C2SS2-10B-10	Ui=300V Ith=5A	1	YE12210100000	(1)
48	S9,S10,S11,S12	Position limit switch	SCHMERSAL	TS236-11Z-M20	500V	4	YE10361200000	(1)
49	S13	Safety switch	SCHMERSAL	AZ17-11ZK	AZ-17	1	YE16171100000	(1)
50	S14	Limit switch	SCHMERSAL	ZS 336-11Z	500V	1	YE14332100000	(1)

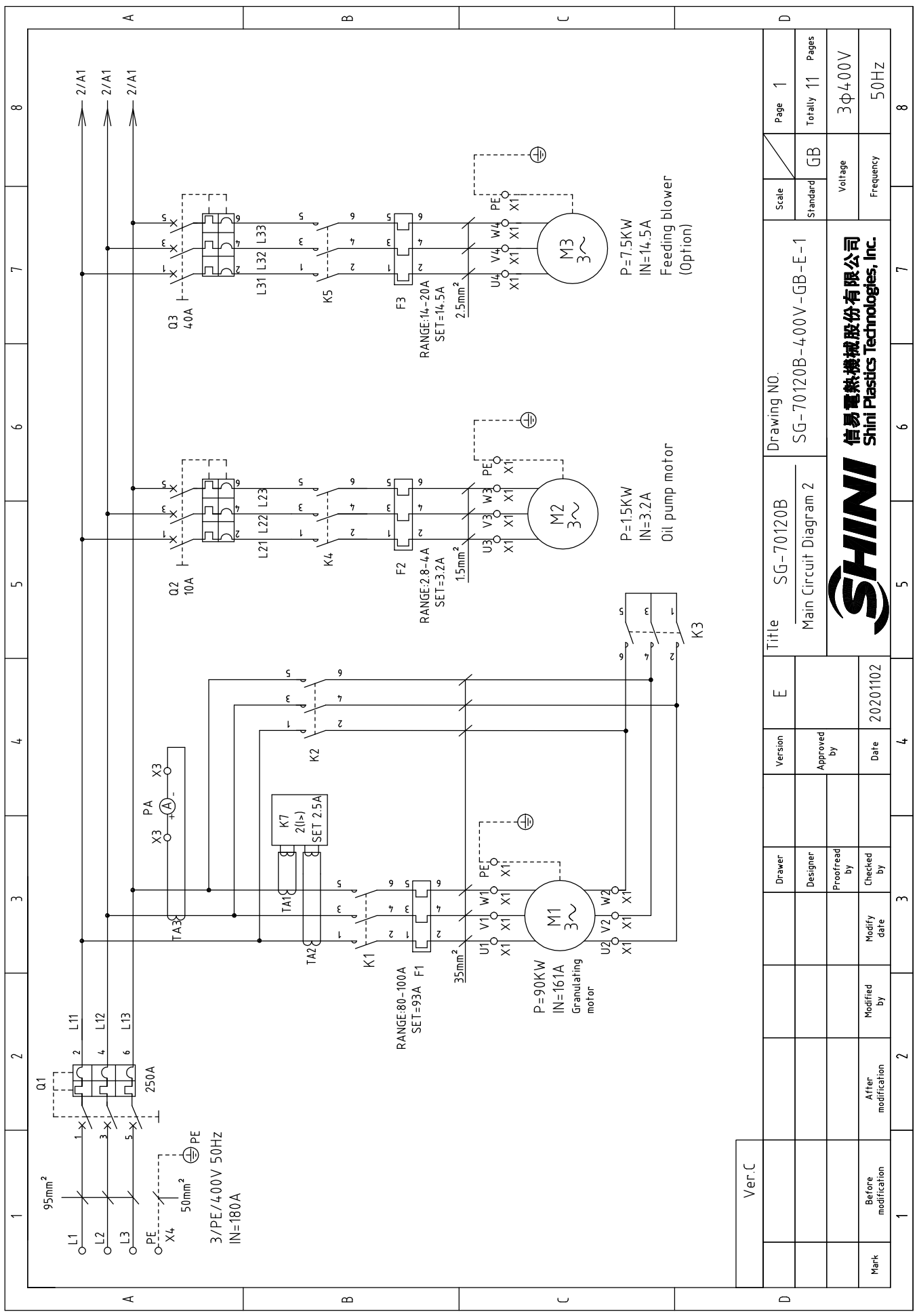
1	2		3	4	5	6	7	8
Ver.D	Notes: (1)Means it's not the material inside the control box.(2)Stand for conveying belt optional accessories;(3)Means optional accessories of dedusting motor;(4)Optional accessories of full-receive alarm device.	Drawer	Designer	Version	G	Title	Drawing NO.	Scale
						SG-70120	SG-70120-400V-CE-G-10	Standard
		Proofread by	Approved by			Electrical Components List 2		CE
Mark	Before modification	Modified by	Modify date	Date				Voltage
				20201102				Frequency
								3Φ400V
								50Hz

1	2		3	4	5	6	7	8
Ver.D	Notes: (1)Means it's not the material inside the control box.(2)Stand for conveying belt optional accessories;(3)Means optional accessories of dedusting motor;(4)Optional accessories of full-receive alarm device.	Drawer	Designer	Version	G	Title	Drawing NO.	Scale
						SG-70120	SG-70120-400V-CE-G-10	Standard
		Proofread by	Approved by			Electrical Components List 2		CE
Mark	Before modification	Modified by	Modify date	Date				Voltage
				20201102				Frequency
								3Φ400V
								50Hz

1	2		3	4	5	6	7	8
Ver.D	Notes: (1)Means it's not the material inside the control box.(2)Stand for conveying belt optional accessories;(3)Means optional accessories of dedusting motor;(4)Optional accessories of full-receive alarm device.	Drawer	Designer	Version	G	Title	Drawing NO.	Scale
						SG-70120	SG-70120-400V-CE-G-10	Standard
		Proofread by	Approved by			Electrical Components List 2		CE
Mark	Before modification	Modified by	Modify date	Date				Voltage
				20201102				Frequency
								3Φ400V
								50Hz

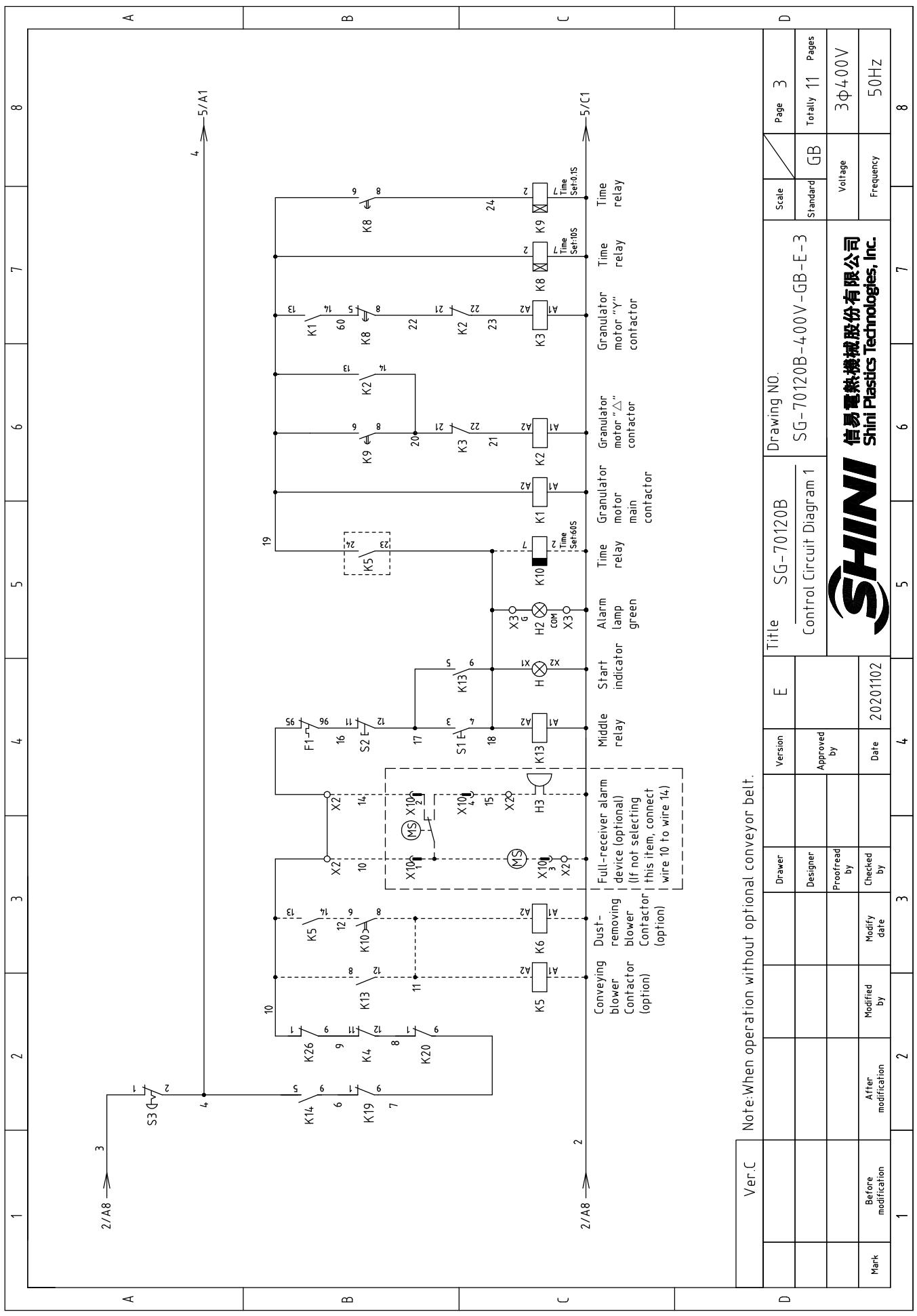
1	2		3	4	5	6	7	8
Ver.D	Notes: (1)Means it's not the material inside the control box.(2)Stand for conveying belt optional accessories;(3)Means optional accessories of dedusting motor;(4)Optional accessories of full-receive alarm device.	Drawer	Designer	Version	G	Title	Drawing NO.	Scale
						SG-70120	SG-70120-400V-CE-G-10	Standard
		Proofread by	Approved by			Electrical Components List 2		CE
Mark	Before modification	Modified by	Modify date	Date				Voltage
				20201102				Frequency
								3Φ400V
								50Hz



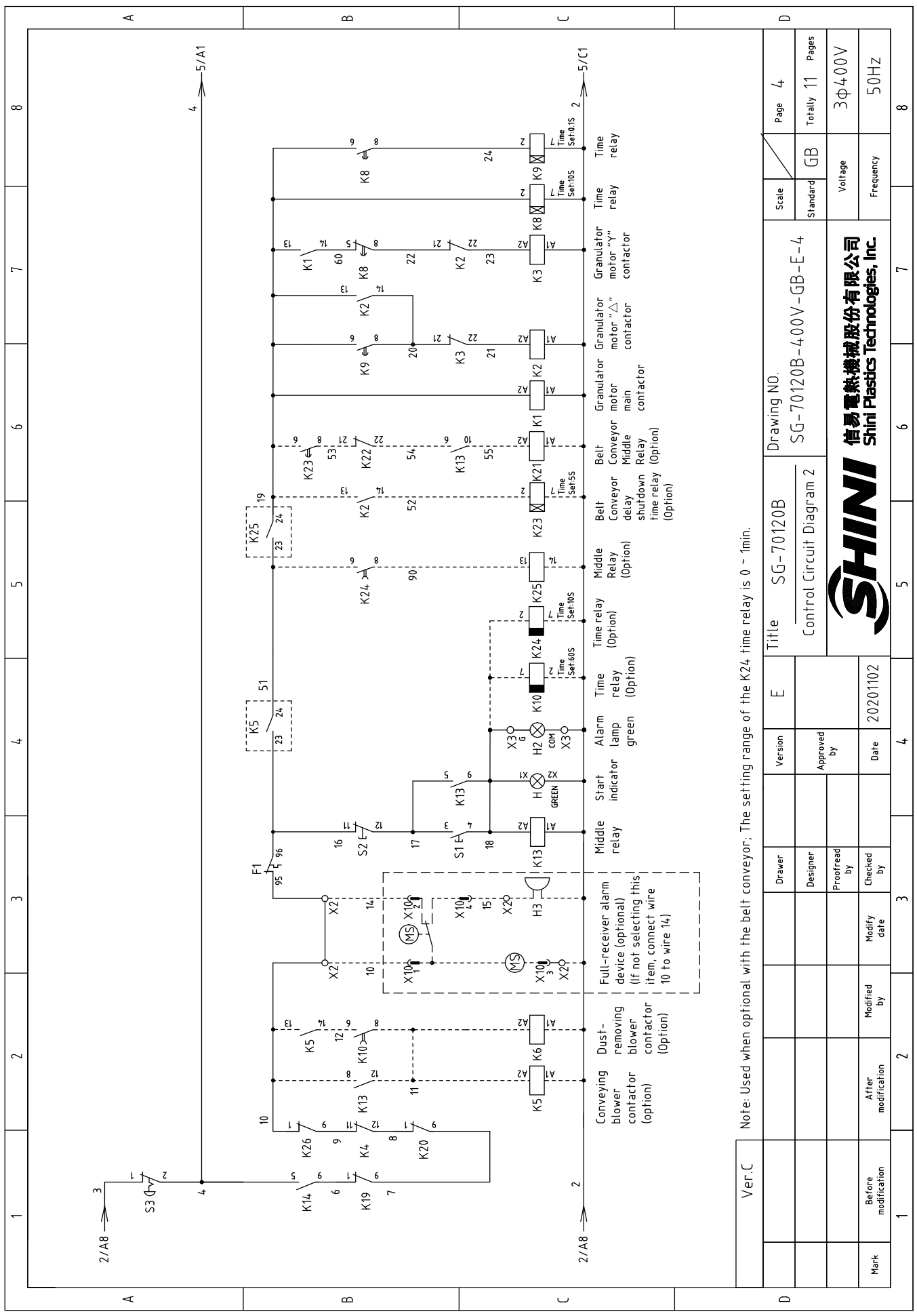


Ver.C	Mark		Before modification	After modification	Modified by	Modify date	Checked by	Proofread by	Designer	Drawer	Version	E	Title		Drawing NO.		Scale	Page 1
	1	2	3	4	5	6	7	8	SG-70120B Main Circuit Diagram 2		SG-70120B-400V-GB-E-1		GB	Totally 11	Pages	3φ400V	Frequency	50Hz




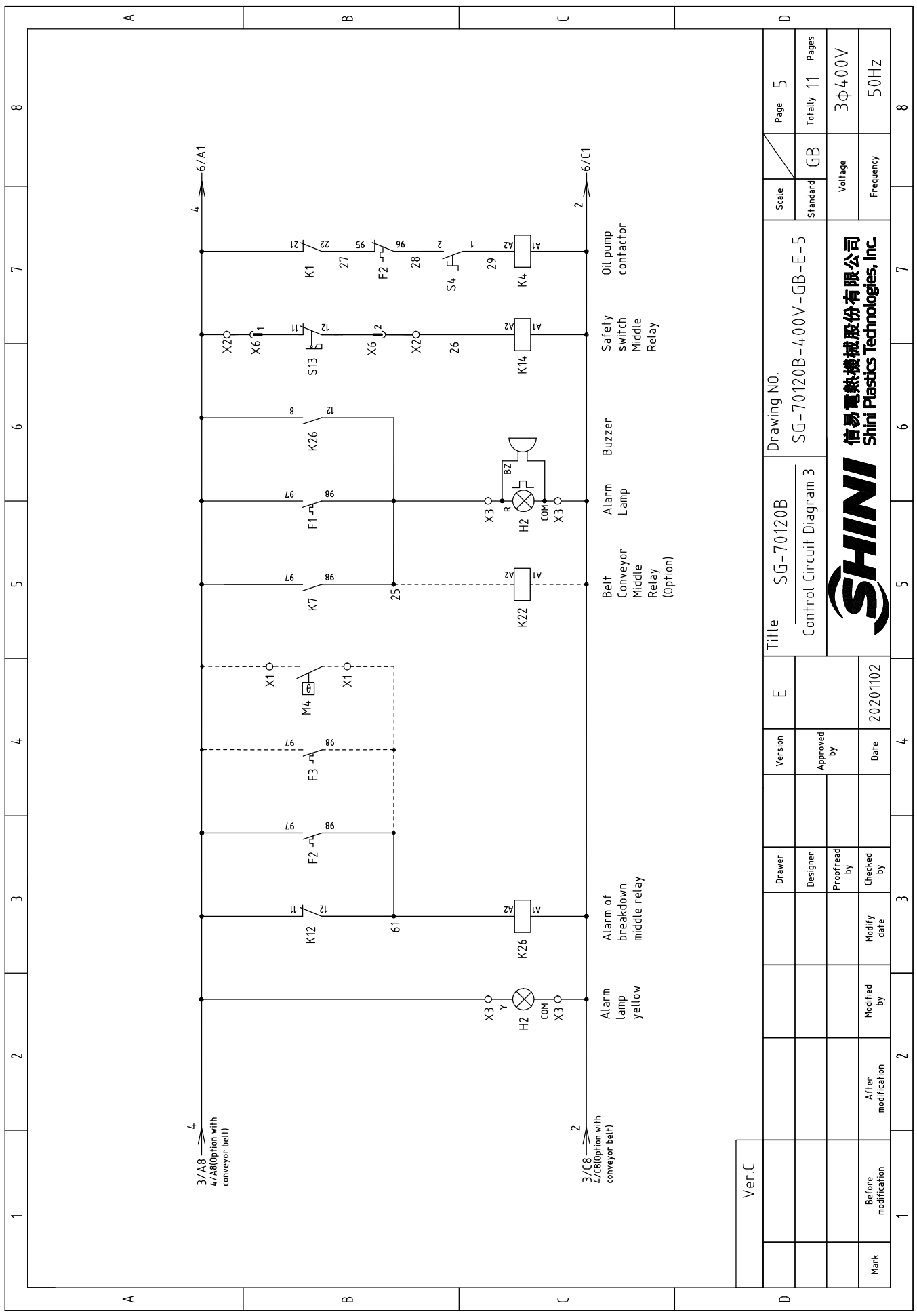


Ver.C	Note: When operation without optional conveyor belt.			E	Title		Drawing No.		Scale	Page 3
	Modified by	Modified date	Proofread by		Approved by	Version	Control Circuit Diagram 1	SG-70120B		
Mark	Before modification	After modification	Checked by	Date	SHINI		信易電熱機械股份有限公司 Shini Plastics Technologies, Inc.		Voltage	3Φ400V
1	2	3	4	5	6	7	8	Frequency	50HZ	



Ver.C

D	Mark	Before modification	Modified by	2	3	4	E	Version	Title	Drawing No.	Scale	Page	4
		After modification	Checked by	3	4	Standard						GB	Totally
Note: Used when optional with the belt conveyor; The setting range of the K24 time relay is 0 ~ 1min.										SG-70120B-400V-GB-E-4		Voltage 3Φ400V	
Control Circuit Diagram 2										SG-70120B-400V-GB-E-4		Frequency 50HZ	
 信易電熱機械股份有限公司 Shini Plastics Technologies, Inc.												8	



Ver.C	Scale		Page	5
	Standard	GB	Totally	11
Mark	Before modification	Modified by	Frequency	50HZ
	After modification	Modify date	Voltage	3Φ400V

Title	SG-70120B		E	Version	Approved by	Date	20201102
	Control Circuit Diagram 3						
Drawing NO.		SG-70120B-400V-GB-E-5		Checked by		4	
Control Circuit Diagram 3		Belt Conveyor Middle Relay (Option)		Proofread by		3	
Alarm Lamp		Alarm of breakdown middle relay		Designer		2	
Buzzer		Alarm lamp yellow		Checked by		1	
Safety switch Middle Relay		Oil pump contactor		Modified by		1	
Oil pump contactor		Belt Conveyor Middle Relay (Option)		Modify date		1	

SHINI
 信易電熱機械股份有限公司
 Shini Plastics Technologies, Inc.


Scale	Page	5
Standard	Totally	11
Voltage	Frequency	3Φ400V 50HZ

1	2		3	4	5	6	7	8	
NO.	Symbol	Name	Manufacturer	Type	Specification	Number	Material number	Remark	
1	Q1	Break Interlock	ABB	A3N400TMF320/32003PFF	320A	1	YE41503400000	Delete	
2	Q1	Break Interlock	ABB	A3N250TMF250/25003PFF	250A	1	YE41252800000	New	
3	Q2	Circuit breaker	TECO	BM-63C/3P	10A	1	YE40301003000		
4	Q3	Circuit breaker	TECO	BM-63C/3P	40A	1	YE40304003000	(2)	
5	Q4	Circuit breaker	TECO	BM-63C/3P	6A	1	YE40300603000	(3)	
6	Q5	Circuit breaker	TECO	BM-63C/2006S 2P	6A	1	YE40200600000		
7	Q6	Circuit breaker	TECO	BM-63C/1010S 1P	10A	1	YE40101000100		
8	Q7	Circuit breaker	TECO	BM-63C/1003S 1P	3A	1	YE40100203000		
9	K1,K2	Contacto	SIEMENS	3RT5054-1AB36	115A 24VAC 50/60Hz	2	YE00505400900		
10	K3	Contacto	SIEMENS	3RT5046-1AC20	95A 24V 50/60Hz	1	YE00504602600		
11	K4	Auxiliary contacto	SIEMENS	3RH5921-1CA01	1NC	1	YE00592110100		
12	K4	Contacto	SIEMENS	3RT6015-1AB02	7A 24V 50/60Hz	1	YE00601502600		
13	K5	Auxiliary contacto	SIEMENS	3RH6911-1AA10	1NO	2	YE00691110000		
14	K5	Contacto	SIEMENS	3RT6025-1AC20	17A 24V 50/60Hz	1	YE00602502600	(2)	
15	K6	Auxiliary contacto	SIEMENS	3RH6911-1AA10	1NO	1	YE00691110000	(2)	
16	K6	Contacto	SIEMENS	3RT6015-1AB02	7A 24V 50/60Hz	1	YE00601502600	(3)	
17	K7	Current relay	SCHNEIDER	LT4706M7A	0.5-6A (220VAC)	1	YE04470600600		
18	K8	Time relay	YUYUN	TH3A-NAB	24VAC/DC 0-60S	1	YE86602400300		
19	K9	Time relay	YUYUN	TH3M-NAB	24VAC/DC 0~3S/60Min	1	YE86123000000		
20	K10	Time relay	YUYUN	TRF-N	24VAC/DC 0~3Min	1	YE86032400000	(2)	
21	K12	Phase disorder protector	CHAOSHI	ABJ2-12W	400V 50/60Hz	1	YE03103800000		
22	X6	Heavy-duty plug-in	HARTING	24P+PE(male)	24P	2	YE68002406300	(1)	
23	X6	Heavy-duty plug-in	HARTING	24P+PE(female)	24P	2	YE68002407300	(1)	
24	TA3	Current transformer	RATTO	RCT-35	300/5A	1	YE04133500000		
25	PA	Ammeter	SFIM	SF670	300/5A	1	YE25677300000	(1)	
Ver. C				Title		Drawing NO.		Page 9	
				SG-70120B		SG-70120B-4.00V-GB-E-9		Totally 11 Pages	
				Electrical Components List 1		GB		Voltage	
								Frequency	
Mark		Before modification		Modified by		Modified date		Checked by	
1		2		3		4		5	
								6	
								7	
								8	



Notes: (1)Means it's not the material inside the control box.(2) Means accessories for material conveying blower.(3)Means optional accessories of dedusting blower.(4)Means optional accessories of full-receive alarm device.(5)Stand for conveying bell optional accessories.

Scale	Page 9
Standard	Totally 11 Pages
GB	3φ4.00V
Voltage	50Hz
Frequency	

1		2		3		4		5		6		7		8	
NO.	Symbol	Name	Manufacturer	Type	Specification	Number	Material number	Remark							
51	X1	Terminal board	Honeywell	GK35	35mm ²	6	YE60003503200								
52			Honeywell	GK35PE	35mm ² PE	1	YE60003503500								
53			Honeywell	SK2.5	2.5mm ²	3	YE60002503200								
54			Honeywell	GK2.5PE	2.5mm ² PE	1	YE60002503400								
55			Honeywell	SK2.5	2.5mm ²	3	YE60002503200	(2)							
56			Honeywell	GK2.5PE	2.5mm ² PE	1	YE60002503400	(2)							
57			Honeywell	SK2.5	2.5mm ²	5	YE60002503200	(3)							
58			Honeywell	GK2.5PE	2.5mm ² PE	1	YE60002503400	(3)							
59			Honeywell	SK2.5	2.5mm ²	2	YE60002503200	(5)							
60	X2 X3	Terminal board	Honeywell	SK2.5	2.5mm ²	28	YE60002503200								
61			Honeywell	GK2.5PE	2.5mm ² PE	1	YE60002503400								
62			Honeywell	SK2.5	2.5mm ²	4	YE60002503200	(4)							
63	X4	Terminal board	NACHI	NCT-50PE	----	1	YE61005040100								
64		Terminal fittings E/GK series	Honeywell	GK series	PCS	4	YE60000003900								
65	X5	Metal connector	SHINI	PLT-162-RR(Mate)	2P	1	YE68016200100	(1)(5)							
66	H3	Buzzer	TEND	EA-2	24VAC	1	YE84240200000	(1)(4)							
67	M1	Motor	----	90KW	400V 50Hz	1	----	(1)							
68	M2	Oil pump motor	----	1.5KW	400V 50Hz	1	----	(1)							
69	M3	Blower	----	7.5KW	400V 50Hz	1	----	(1)(2)							
70	M4	Blower	----	1.1KW	400V 50Hz	1	----	(1)(3)							
71	Y11 Y12 Y13 Y14	Solenoid Valve	----	----	24VDC	4	----	(1)							
72	MS	Material level switch	SIPAI	SR-80	24VAC	1	YE15802400100	(1)(4)							
Ver. C Notes: (1)Means it's not the material inside the control box.(2) Means accessories for material conveying blower.(3)Means optional accessories of dedusting blower.(4)Means optional accessories of full-receive alarm device.(5)Stand for conveying belt optional accessories.															
D															
Drawing NO. SG-70120B-400V-GB-E-11										Scale		Page 11			
Electrical Components List 3										Standard		Totally 11		Pages	
										Voltage		3φ4.00V			
										Frequency		50Hz			
1		2		3		4		5		6		7		8	