

机型版本 Ver.B	Version	0
Drawer	Designer	Proofread by
After modification	Modify date	Checked by
Before modification	20210111	Date

Title		SYLINK-2HP
Drawing NO.		SYLINK-2HP-GB-230V-0-1
Main Circuit Diagram		

Scale	Page	8
Standard	Totally	3
GB	Pages	
Voltage	3φ230V	
Frequency	50HZ	



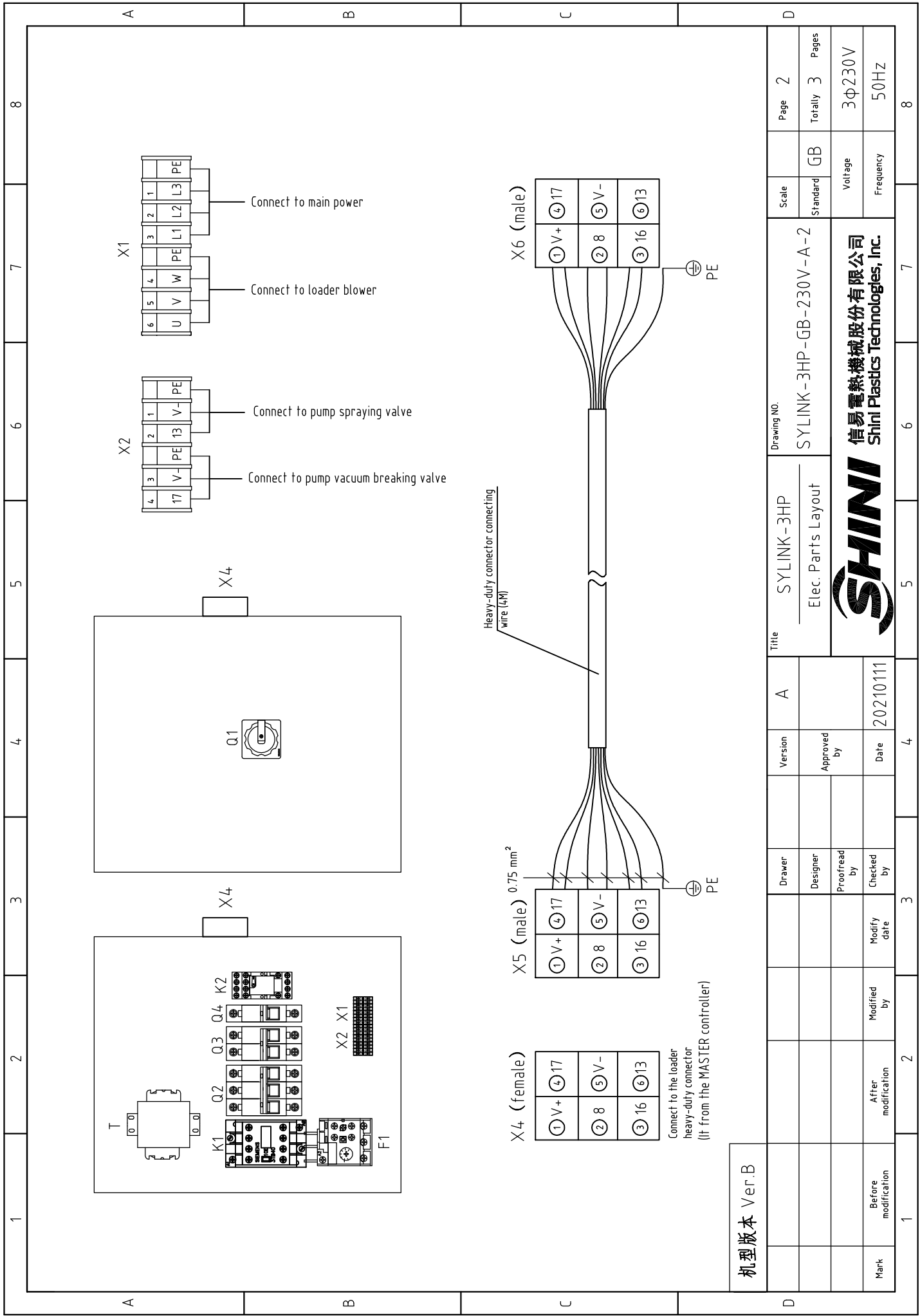
(It from the MASTER controller)



1		2		3		4		5		6		7		8	
NO.	Symbol	Name	Manufacturer	Type	Specification	Number	Material number	Remark							
1	Q1	Main power switch	EATON	T0-2-1/EA/SVB/20A	20A	1	YE1002160000								
2	Q2	Circuit breakers	TECO	BM-63/3020S	20A	1	YE40302003000								
3	Q3	Circuit breakers	TECO	BM-63C/2003S	3A 2P	1	YE40200203000								
4	Q4	Circuit breakers	TECO	BM-63C/1003S	3A 1P	1	YE40100203000								
5	T	Transformer	JIUXIN	IN=230V/200V OUT=24V	80VA	1	YE70023005200								
6	K1	Contactors	SIEMENS	3RT6017-1AB01	24VAC	1	YE00601702500								
7	K2	Middle relay	WEIDMULLER	DRM270024LT	24VDC 12A	1	YE03272400000								
8	F1	hermal overload relays	SIEMENS	3RU6116-1HB0	5.5-8A	1	YE01160550000								
9	X1,X2	Card-type terminal	HONEYWELL	SK2.5	2.5mm <sup>2</sup>	10	YE60002503200								
10		Wiring terminal	HONEYWELL	GK2.5PE	2.5mm <sup>2</sup> PE	4	YE60002503400								
11	X4	Heavy duty connector	HARTING	Han E-6F	6P+PE	1	YE68000601300								
12	X5,X6	Heavy duty connector	HARTING	Han E-6M	6P+PE	2	YE68000601700								
13		Cable lock head	----	PG16	PCS	2	YE67001600000								
14		Terminal fittings E/GK series	HONEYWELL	----	----	4	YE60000003900								
机 型 版 本 Ver.B															
		Drawer		Version		0		Title		SYLINK-2HP		Drawing NO.		Scale	
		Designer		Approved by				Elec. Parts List 1		SYLINK-2HP-GB-230V-0-3		Standard		Page 3	
		Proofread by		Date		20210111						GB		Totally 3 Pages	
Mark		After modification		Modified by		Modify date						Voltage		3Φ230V	
												Frequency		50HZ	
1		2		3		4		5		6		7		8	







机型版本 Ver.B

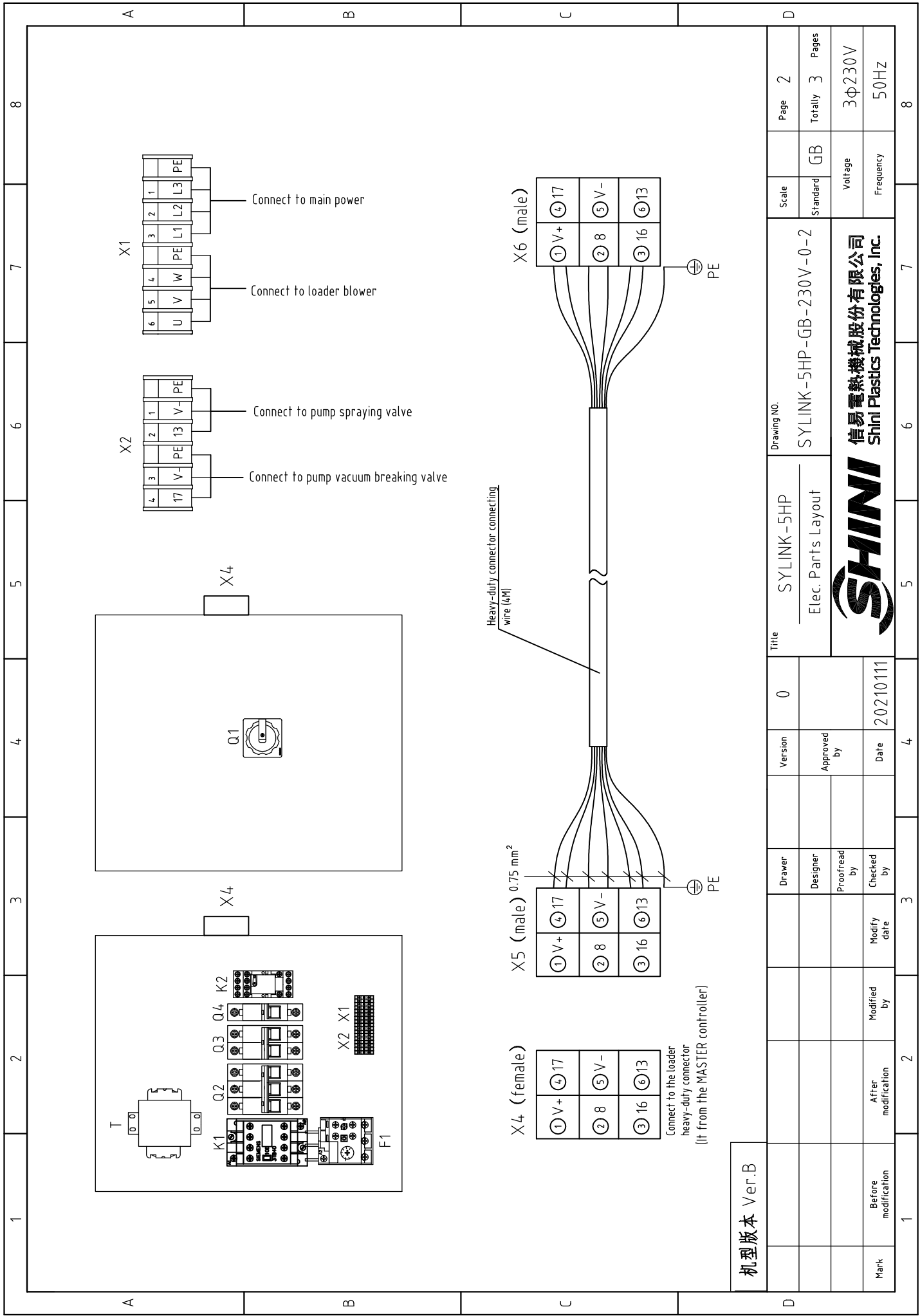
Mark	Before modification	Modified by	Modify date	Checked by	Date	Approved by	Version	A	Title	SYLINK-3HP Elec. Parts Layout	Drawing NO. SYLINK-3HP-GB-230V-A-2	Scale	Page 2
	After modification	Modified by	Modify date									Standard	Totally 3
												Voltage	3φ230V
												Frequency	50HZ
												Standard	GB
												Pages	8



1		2		3		4		5		6		7		8	
NO.	Symbol	Name	Manufacturer	Type	Specification	Number	Material number	Remark							
1	Q1	Main power switch	EATON	T0-2-1/EA/SVB/20A	20A	1	YE10021160000								
2	Q2	Circuit breakers	TECO	BM-63/3025S	25A	1	YE40302503000								
3	Q3	Circuit breakers	TECO	BM-63C/2003S	3A 2P	1	YE40200203000								
4	Q4	Circuit breakers	TECO	BM-63C/1003S	3A 1P	1	YE40100203000								
5	T	Transformer	JIUXIN	IN=230V/200V OUT=24V	80VA	1	YE70023005200								
6	K1	Contactors	SIEMENS	3RT6017-1AB01	24VAC	1	YE00601702500								
7	K2	Middle relay	WEIDMULLER	DRM270024LT	24VDC 12A	1	YE03272400000								
8	F1	Thermal overload relays	SIEMENS	3RU6116-1HB0	5.5-8A	1	YE01160550000								
9	X1,X2	Card-type terminal board	HONEYWELL	SK2.5	2.5mm <sup>2</sup>	10	YE60002503200								
10		Wiring terminal	HONEYWELL	GK2.5PE	2.5mm <sup>2</sup> PE	4	YE60002503400								
11	X4	Heavy-duty connector	HARTING	Han E-6F	6P+PE	1	YE68000601300								
12	X5,X6	Heavy-duty connector	HARTING	Han E-6M	6P+PE	2	YE68000601700								
13		Cable lock head	----	PG16	PCS	2	YE67001600000								
14		Terminal fittings E/GK series	HONEYWELL	----	----	4	YE60000003900								
机型版本 Ver.B															
				Drawer		Version		Title		Drawing NO.		Scale		Page	
				Designer		Approved by		SYLINK-3HP Elec. Parts List 1		SYLINK-3HP-GB-230V-A-3		Standard		Page 3	
				Proofread by		Date						GB		Totally 3 Pages	
				Checked by		20210111						Voltage		3Φ230V	
Mark		After modification		Modified by		Modify date						Frequency		50HZ	
1		2		3		4		5		6		7		8	







1 2 3 4 5 6 7 8

A B C D

机型版本	Ver.B
Mark	Before modification
	Modified by
	Modify date
	Checked by
	Proofread by
	Designer
	Drawer
	Version
	0
	Approved by
	Date
	20210111

Title		SYLINK-5HP		Drawing NO.		Page 2	
Elec. Parts Layout		SYLINK-5HP-GB-230V-0-2		Standard		Page 3	
				GB		Totally 3	
				Voltage		3φ230V	
				Frequency		50HZ	

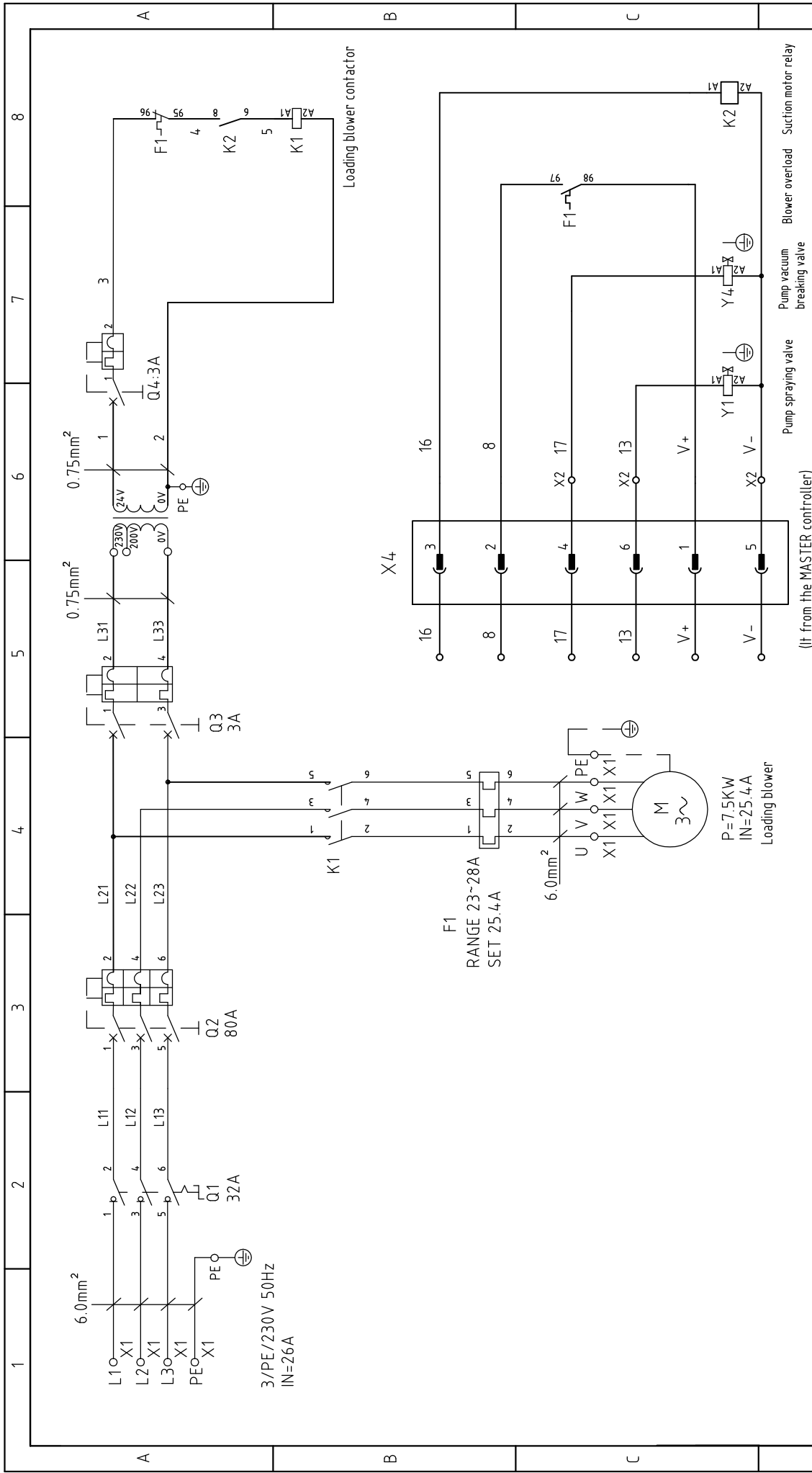
**SHINI**  
 信易電熱機械股份有限公司  
 Shini Plastics Technologies, Inc.

1 2 3 4 5 6 7 8



1		2		3		4		5		6		7		8	
NO.	Symbol	Name	Manufacturer	Type	Specification	Number	Material number	Remark							
1	Q1	Main power switch	EATON	T0-2-1/EA/SVB/20A	20A	1	YE1002160000								
2	Q2	Circuit breakers	TECO	BM-63C/3050S	50A 3P	1	YE40305003000								
3	Q3	Circuit breakers	TECO	BM-63C/2003S	3A 2P	1	YE40200203000								
4	Q4	Circuit breakers	TECO	BM-63C/1003S	3A 1P	1	YE40100203000								
5	T	Transformer	JIUXIN	IN=230V/200V OUT=24V	80VA	1	YE70023005200								
6	K1	Contactors	SIEMENS	3RT6026-1AC20	24 VAC	1	YE00602602600								
7	K2	Middle relay	WEIDMULLER	DRM270024LT	24 VDC 12A	1	YE03272400000								
8	F1	Thermal overload relays	SIEMENS	3RU6126-4-AB0	11-16A	1	YE01260110000								
9	X1	Terminal board	HONEYWELL	SK4.0	4.0mm <sup>2</sup>	6	YE61040000000								
10		Wiring terminal board	HONEYWELL	GK4.0PE	4.0mm <sup>2</sup> PE	2	YE61043500000								
11	X2	Card-type terminal	HONEYWELL	SK2.5	2.5mm <sup>2</sup>	4	YE60002503200								
12		Wiring terminal board	HONEYWELL	GK2.5PE	2.5mm <sup>2</sup> PE	2	YE60002503400								
13	X4	Heavy-duty connector	HARTING	Han E-6F	6P+PE	1	YE68000601300								
14	X5,X6	Heavy-duty connector	HARTING	Han E-6M	6P+PE	2	YE68000601700								
15		Cable lock head	----	PG16	PCS	2	YE67001600000								
16		Terminal fittings E/GK series	HONEYWELL	----	----	4	YE60000003900								
C															
D															
机 型 版 本 Ver.B															
		Drawer		Version		0		Title		SYLINK-5HP		Drawing NO.		Page 3	
		Designer		Approved by				Elec. Parts List 1		SYLINK-5HP-GB-230V-0-3		Standard		Page 3	
		Proofread by		Date		20210111				GB		Voltage		3φ230V	
Mark		After modification		Modify date						Frequency		50Hz			
1		2		3		4		5		6		7		8	

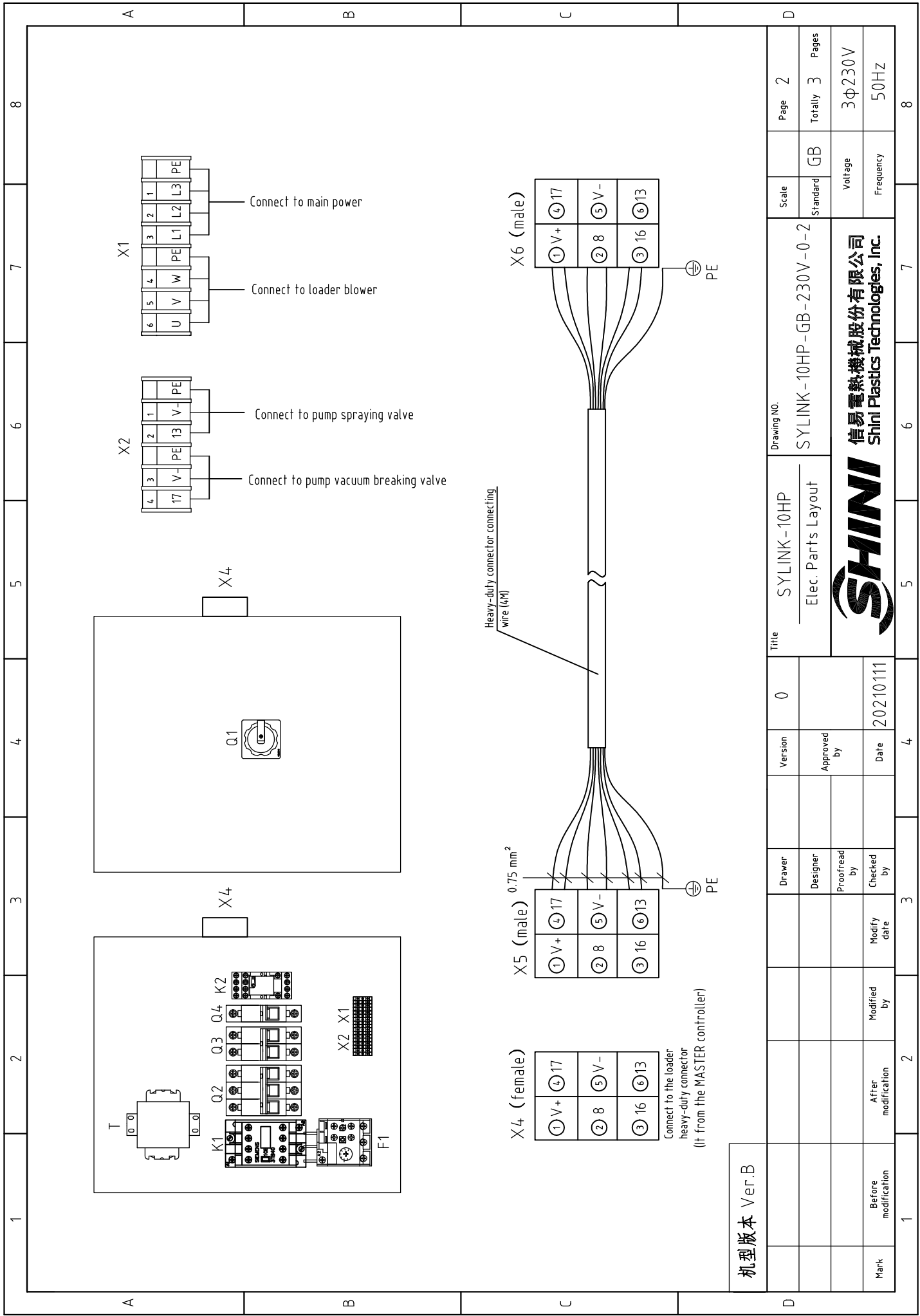




机型版本 Ver.B

Title	SYLINK-10HP		Drawing No.	SYLINK-10HP-GB-230V-0-1		Scale	Page	1	
	Main Circuit Diagram			Standard	GB		Totally	3	Pages
Version	0		Approved by	Date	20210111	Voltage	3Φ230V		
	Drawer	Designer					Proofread by	Checked by	Modify date
After modification			Before modification	1	2	3			





机型版本 Ver.B

Mark	Before modification	Modified by	Modify date	Checked by	Date	Approved by	Version	0	Title	Drawing NO.		Page	
	After modification									SYLINK-10HP	SYLINK-10HP-GB-230V-0-2		Scale
Mark	Before modification	Modified by	Modify date	Checked by	Date	Approved by	Version	0	Title	Elec. Parts Layout		Standard	Pages
	After modification									SYLINK-10HP	SYLINK-10HP-GB-230V-0-2		
										Voltage		3φ230V	
										Frequency		50HZ	
										Standard		GB	
										Scale			
										Page		2	
										Totally		3	
										Pages		8	



1		2		3		4		5		6		7		8	
NO.	Symbol	Name	Manufacturer	Type	Specification	Number	Material number	Remark							
1	Q1	Main power switch	EATON	P1-32/EA/SVB	32A	1	YE1032320000								
2	Q2	Circuit breakers	TECO	BM-100D/3080S	80A 3P	1	YE40308003000								
3	Q3	Circuit breakers	TECO	BM-63C/2003S	3A 2P	1	YE40200203000								
4	Q4	Circuit breakers	TECO	BM-63C/1003S	3A 1P	1	YE40100203000								
5	T	Transformer	JIUXIN	IN=230V/200V OUT=24V	80VA	1	YE70023005200								
6	K1	Contactors	SIEMENS	3RT6028-1AC20	24VAC	1	YE00602802600								
7	K2	Middle relay	WEIDMULLER	DRM270024LT	24VDC 12A	1	YE03272400000								
8	F1	Thermal overload relays	SIEMENS	3RU6126-4NB0	23-28A	1	YE01612620000								
9	X1	Terminal board	HONEYWELL	SK6.0	6.0mm <sup>2</sup>	6	YE61060000000								
10		Wiring terminal board	HONEYWELL	GK6.0PE	6.0mm <sup>2</sup> PE	2	YE61063500000								
11	X2	Card-type terminal	HONEYWELL	SK2.5	2.5mm <sup>2</sup>	4	YE60002503200								
12		Wiring terminal board	HONEYWELL	GK2.5PE	2.5mm <sup>2</sup> PE	2	YE60002503400								
13	X4	Heavy-duty connector	HARTING	Han E-6F	6P+PE	1	YE68000601300								
14	X5,X6	Heavy-duty connector	HARTING	Han E-6M	6P+PE	2	YE68000601700								
15		Cable lock head	----	PG16	PCS	2	YE67001600000								
16		Terminal fittings E/GK series	HONEYWELL	----	----	4	YE60000003900								
机 型 版 本 Ver.B															
				Drawer		Version		Title		Drawing NO.		Scale		Page	
				Designer		Approved by		SYLINK-10HP Elec. Parts List 1		SYLINK-10HP-GB-230V-0-3		Standard		Page 3	
				Proofread by		Date						GB		Totally 3 Pages	
				Checked by		20210111						Voltage		3Φ230V	
Mark		Before modification		Modified by		Modify date						Frequency		50HZ	
1		2		3		4		5		6		7		8	

