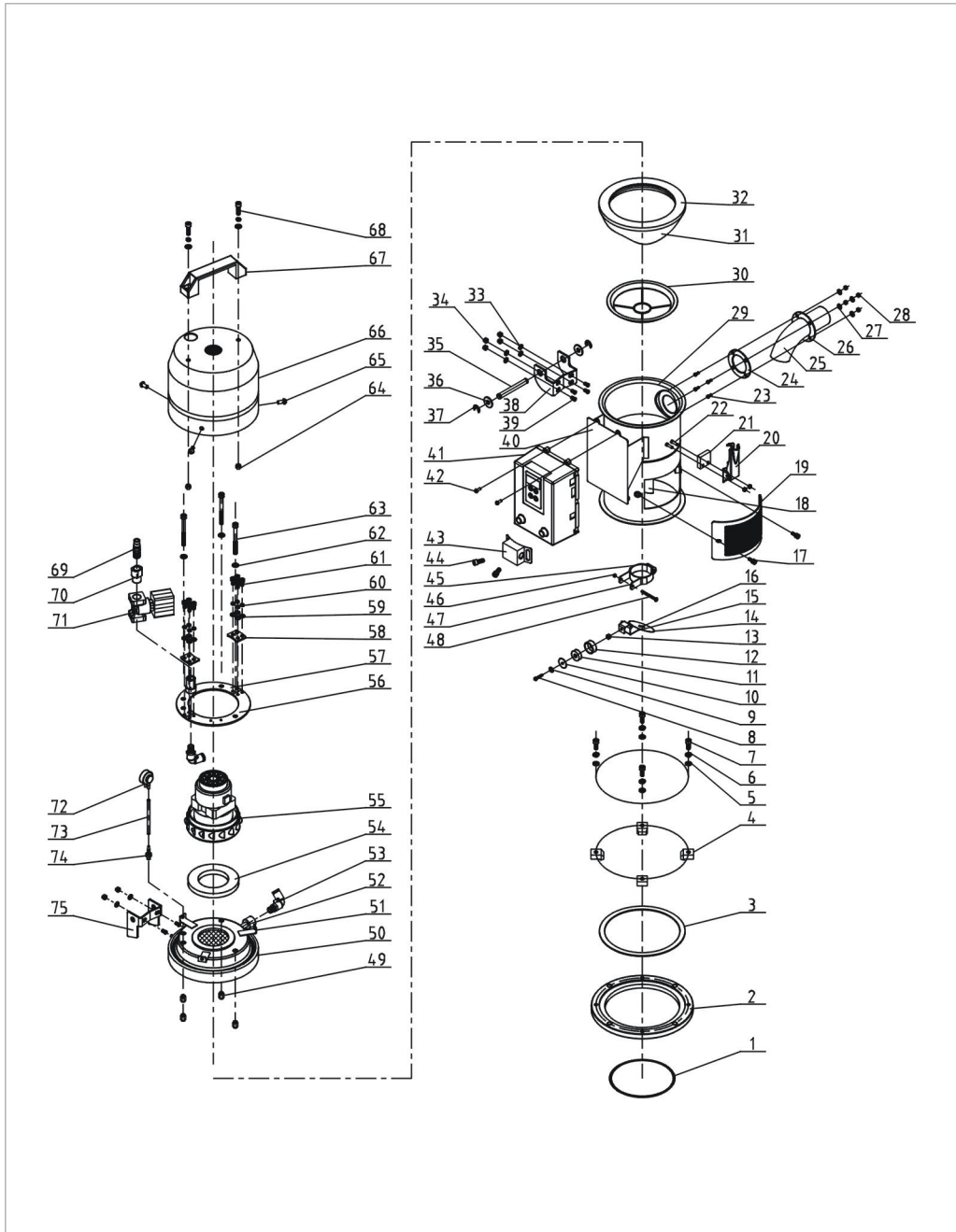


1. Assembly Drawing (SAL-1U)

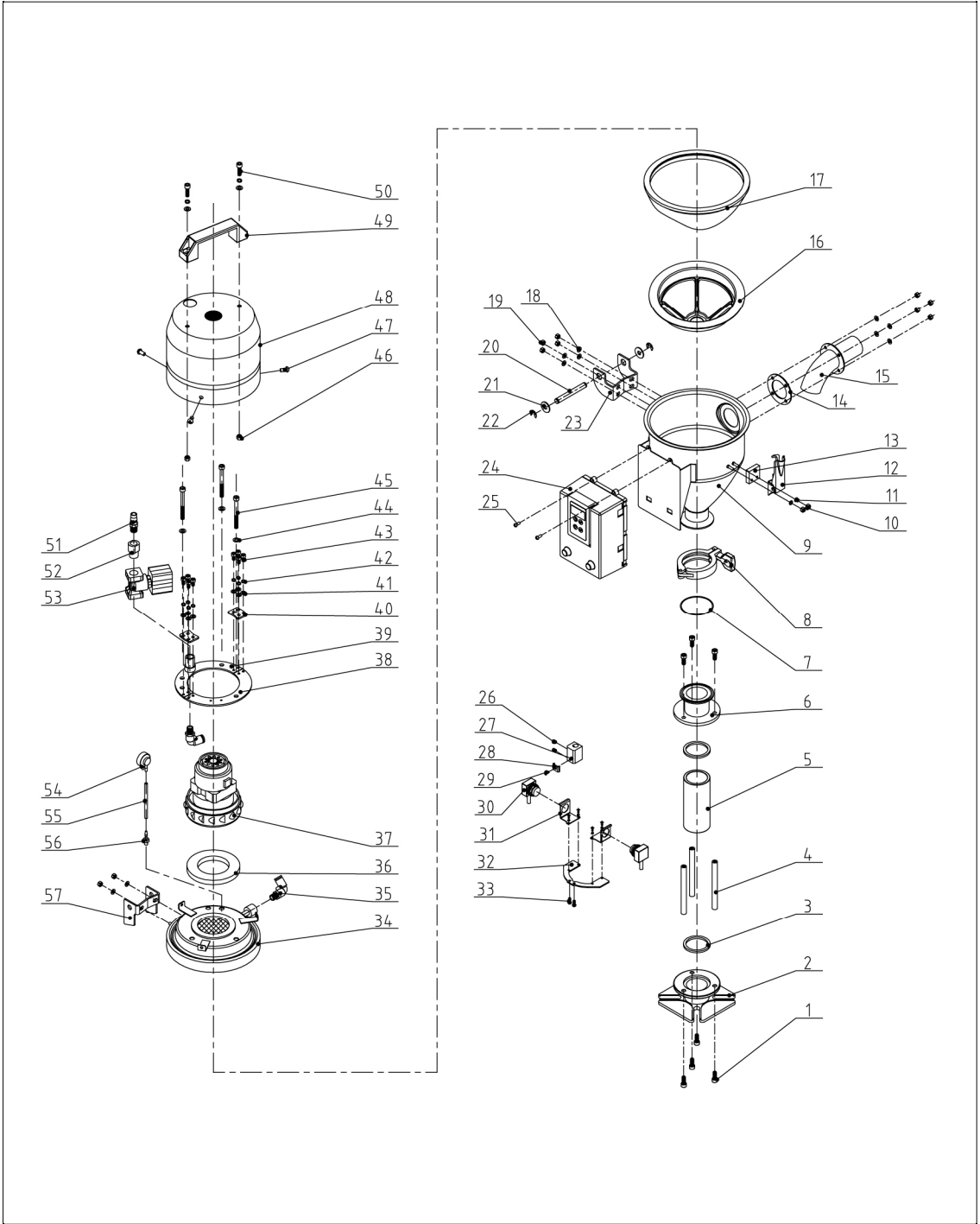


Remarks: Please refer to material list 2 for specific explanation of the numbers in assembly drawing.

2. Parts List (SAL-1U)

No.	Name	Part No.	No.	Name	Part No.
1	O-Type seal ring	YR20205500000	39	Welding screw M5×10	YW69051000000
2	Base	YW20001500110	40	Control box base	-
3	Base ring	-	41	Control box	YR40030600000
4	Pressure block	YW20000600500	42	Cross socket head cap screw M4×6	YW63040600000
5	Flat washer Φ6×13	YW66061300000	43	Sensor shell	-
6	Spring washer M6	YW65006000000	44	Inner hexagon screw	YW61061000100
7	Inner hexagon screw M6×15	YW61061600300	45	Shut-off plate fixing base	-
8	Cross socket head cap screw	YW63032500000	46	Locknut M3	YW64000300000
9	Flat washer 3×10	YW66031000000	47	Shut-off plate fixing base	-
10	Flat washer 3×12	YW66031200000	48	Cross socket head cap screw M3×40	YW63034000000
11	Permanent magnet	YW90213700000	49	Mini-countersunk rivet screw M6	YW64060200000
12	Magnet shield	BH12115000010	50	Hopper cover	-
13	Locknut M3	YW64000300000	51	Blower fixing base	BH10063200040
14	Shut-off plate*	BL21001501920	52	Reverse clean pipe	-
15	Connection block for shut-off plate	-	53	Air pipe quick connector	YW80083800200
16	Lentil head screw	YW09250500000	54	Blower ring	-
17	Star knob M6×15	YR40061500000	55	Carbon brush motor *	YM30122250000
18	Discharge port	-	56	Fixed board 2	-
19	Ventilation window	YR40000600500	57	Fixed board 1	-
20	Snap hook	YW02003000400	58	Fixed board 3	-
21	Pad	YR40000600300	59	Flat washer 5	YW66051000100
22	Welding screw M4×15	YW69041500100	60	Spring washer 5	YW65050000000
23	Welding screw M4×10	YW69041000000	61	Inner hexagon screw	YW61051200100
24	Material inlet pipe fastener	YR10150300000	62	Flat washer 6	YW66061300000
25	Material inlet pipe	BL32333600020	63	Inner hexagon screw	YW61065000100
26	Fixing plate for material inlet pipe	-	64	Locknut	YW64000600200
27	Flat washer 4	YW66040800000	65	Cross socket head cap screw	YW62051500000
28	Locknut M4×0.7	YW64040700100	66	Blower cover	-
29	Material storage tank	-	67	Square aluminum handle	BW20012000040
30	Split washer of filter cloth **	-	68	Inner hexagon screw	YW61062000300
31	Hop-pocket**	BP82000100040	69	Quick connector	YW80031400000
32	Hopper ring*	YR10104000000	70	Connector 3	-
33	Flat washer 5	YW66051000100	71	Solenoid valve *	YE32213100000
34	Locknut M5	YW64000500000	72	Pressure switch	YE16028000000
35	Hinge pin	BH10006003110	73	Blue air pipe	YR60060400000
36	Flat washer 8×22	YW66082200100	74	Pressure switch connector	BH11103000010
37	E-rings 6	YW63051000000	75	upper hinge	BL32000600240
38	Down hinge	BL32000600140			

3. Assembly Drawing (SAL-1U-E)



Remarks: Please refer to material list 4 for specific explanation of the numbers in parts drawing.

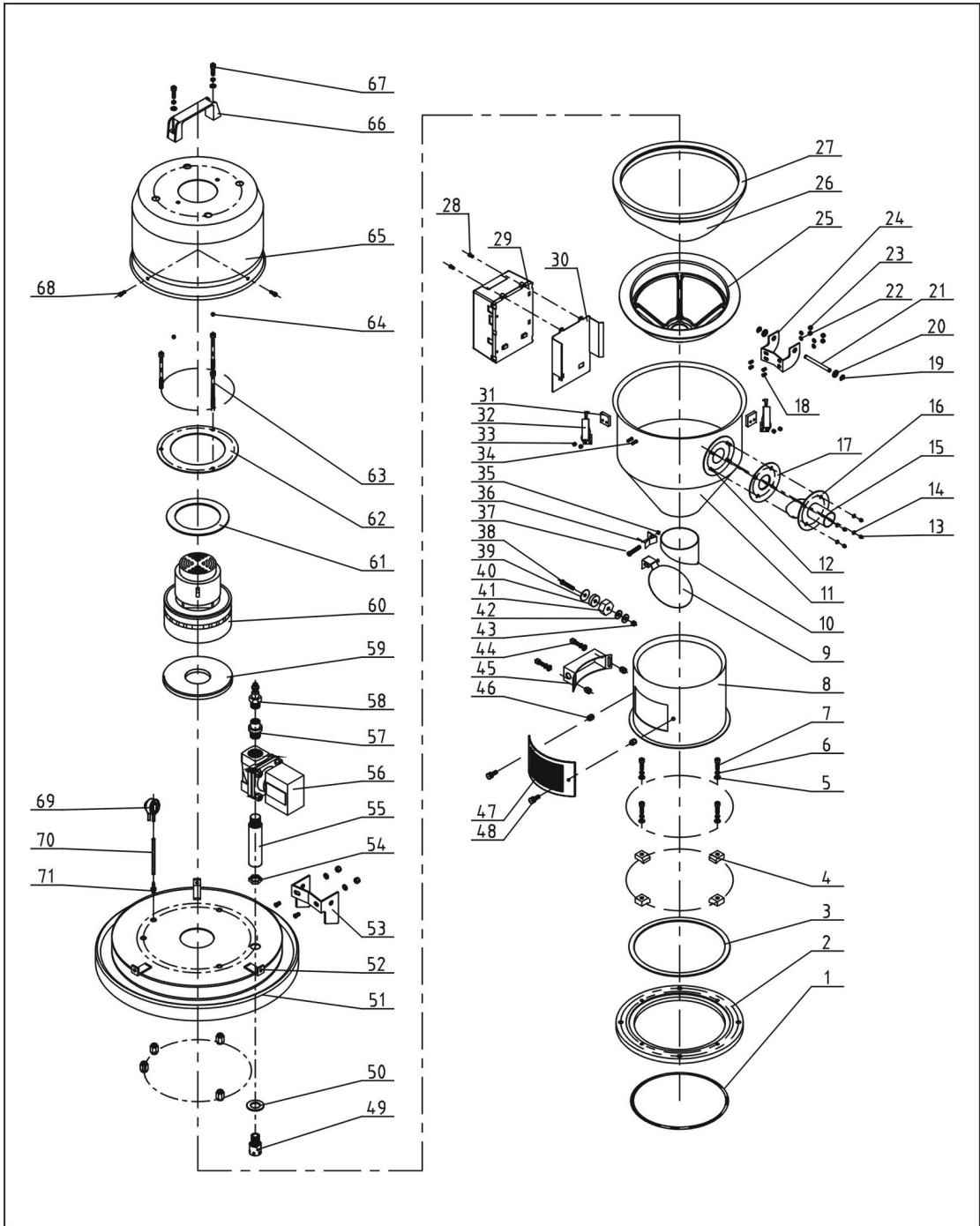
4. Parts List (SAL-1U-E)

No.	Name	Part No.	No.	Name	Part No.
1	Inner hexagon screw M6×15	YW61061600300	30	Photosensor	YE15143900300
2	Glass pipe down flange	YW32000300000	31	Photosensor mounting block	-
3	Glass pipe ring	YW61061600300	32	Photosensor fixing plate	BL90001000120
4	Flange connection shaft	BH10101100010	33	Cross socket head cap screw M4×10	YW63041000000
5	Glass pipe**	YW70504000000	34	Mini-countersunk rivet screw M6	YW64060200000
6	Glass pipe upper flange	BW32000300210	35	Hopper cover	BL22001500821
7	Base ring	YR10000300200	36	Blower cover fixing base	-
8	Stainless steel pipe clamp	YW07002500600	37	Reverse clean pipe	YM30122250000
9	Material storage tank	BL21001502320	38	Fixing plate 2	-
10	Locknut M4×0.7	YW64040700100	39	Fixing plate 1	-
11	Flat washer 4	YW66040800000	40	Fixing plate 3	-
12	Snap hook **	YW02003000400	41	Flat washer 5	YW66051000100
13	Block	YR40000600300	42	Spring washer 5	YW65050000000
14	Material inlet pipe ring	YR10150300000	43	Inner hexagon cylinder head screw	YW61051200100
15	Material inlet pipe	BL32333600020	44	Flat washer 6	YW66061300000
16	Filter cloth split washer**	YR40001500100	45	Inner hexagon screw M6×50	YW61065000100
17	Hop-pocket**	BP82001500044	46	Locknut M6	YW64000600200
18	Flat washer 5	YW66051000100	47	Cross socket head cap screw M5×15	YW62051500000
19	Locknut M5	YW64000500000	48	Blower cover	-
20	Hinge pin	BH10006003110	49	Square aluminum handle L120	BW20012000040
21	Flat washer Φ8×22	YW66082200100	50	Inner hexagon screw M6×20	YW61062000300
22	E rings 6	YW63051000000	51	Quick connector 3" ×1/4PT	YW80031400000
23	Down hinge	BL32000600120	52	Connector 3	BH13031100010
24	Control box	YR40030600000	53	Solenoid valve	YE32213100000
25	Cross socket head cap screw M4×6	YW63040600000	54	Pressure switch	YE16028000000
26	Set screw M4×5	YW63040600000	55	Blue air pipe	YR60060400000
27	Photosensor fixing base	BL21001502420	56	Pressure switch connector	BH11103000010
28	Pressure block of photosensor	BL21061600020	57	Upper hinge	BL32000600240
29	Cross socket head cap screw M4×10	YW63041000000			

* means possible broken parts. ** means easy broken parts. A spare backup is suggested.

Please confirm the version of manual is compatible with equipment before placing the purchase order to guarantee that the item number of the spare part is in accordance with the real object.

5. Assembly Drawing (SAL-3U)



Remarks: Please refer to material list 6 for specific explanation of the numbers in parts drawing.

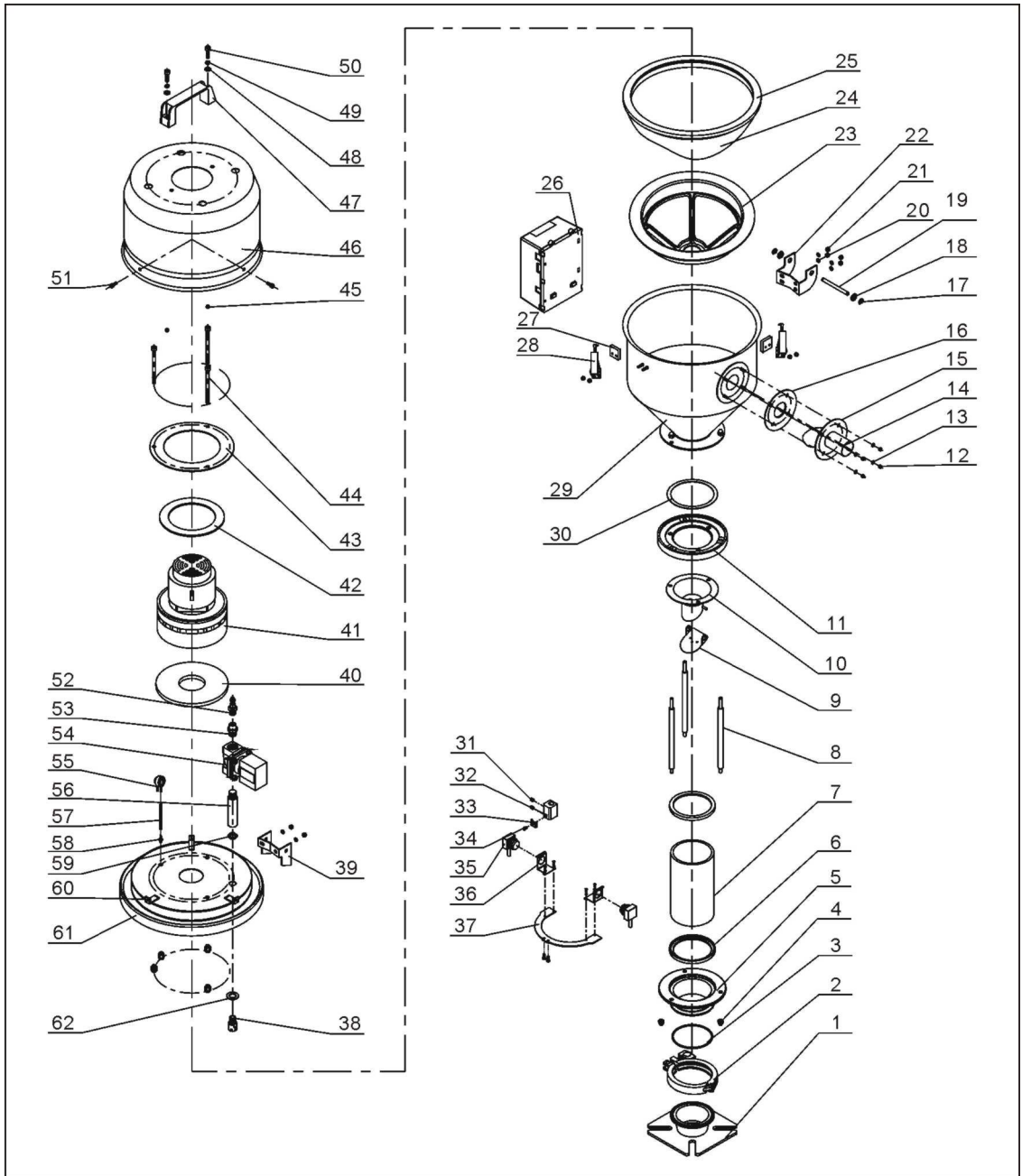
6. Parts List (SAL-3U)

No.	Name	Part No.	No.	Name	Part No.
1	O-Type seal ring	YR20205500000	37	Cross socket head cap screw M3×40	YW63034000000
2	Base	YW20006000000	38	Cross socket head cap screw M6×20	YW63062000000
3	Base ring	-	39	Magnet cover	BL21000600120
4	Pressure block	YW20000600500	40	Permanent magnet	YW90257700000
5	Spring washer M6	YW65006000000	41	Magnet sleeve	BH12000600010
6	Flat washer Φ6	YW66061300000	42	Flat washerΦ8×22	YW66082200100
7	Inner hexagon screw M6×20	YW61062000300	43	Screw M6	YW64000600200
8	Hopper fixing base	BL21063200020	44	Inner hexagon screw M6×10	YW63061000000
9	Baffle plate*	BL21000302320	45	Sensor shell	YR40000600100
10	Discharging port	BL21000600720	46	Mini-countersunk rivet screw M6	YW64060200000
11	Material storage tank	-	47	Ventilation window	YR40000600500
12	Screw M4×10	YW69041000000	48	Star spanner	YR40061500000
13	Locknut M4×0.7	YW64040700100	49	Reverse clean pipe nozzle	BH13033000810
14	Flat washerΦ4	YW66040800000	50	Washer	BP62352100050
15	Material inlet pipe	BL32333600020	51	Hopper cover	-
16	Material inlet pipe fixing plate	-	52	Blower fixing base	-
17	Material inlet pipe ring	YR10150300000	53	Upper hinge	BL32000600240
18	Screw M5×10	YW64040700100	54	Connection nut	-
19	E rings 6	YW66000500000	55	Connector 2	BH13030300010
20	Flat washer Φ8×22	YW66082200100	56	Solenoid valve	YE32213100000
21	Hinge pin	BH10006003110	57	Connector 3	BH13031100010
22	Flat washer Φ5	YW66051000100	58	Quick connector	YW80031400000
23	Locknut M5	YW64000500000	59	Blower ring (down)	YR10070000000
24	Down hinge	BL32000600140	60	Carbon brush motor*	YM30965600000
25	Filter cloth split washer**	YR40003000100	61	Blower ring (upper)	YP62141200000
26	Hop-pocket **	BP82003000044	62	Blower fixing plate	-
27	Hopper ring*	YR10000300100	63	Inner hexagon screw M6×90	YW61069000100
28	Cross socket head cap screw M4×6	YW63040600000	64	Locknut M6	YW64000600200
29	Control box	YR40030600000	65	Blower shell	YR40033000000
30	Control box base	-	66	L120 square aluminum handle	BW20012000040
31	Block	YW02003000400	67	Inner hexagon screw M6×20	YW61062000300
32	Snap hook	YR40000600300	68	Cross socket head cap screw M5×15	YW62051500000
33	Locknut M4×0.7	YW69040700100	69	Pressure switch	YE15002000100
34	Screw M4×15	YW64041500100	70	Blue air pipe	YR60060400000
35	Locknut M3	YW64000300000	71	Pressure switch connector	BH11103000010
36	Fixing base of baffle plate	BL20000601220			

* means possible broken parts. ** means easy broken parts. A spare backup is suggested.

Please confirm the version of manual is compatible with equipment before placing the purchase order to guarantee that the item number of the spare part is in accordance with the real object.

7. Assembly Drawing (SAL-3U-E)



Remarks: Please refer to material list 8 for specific explanation of the numbers in parts drawing.

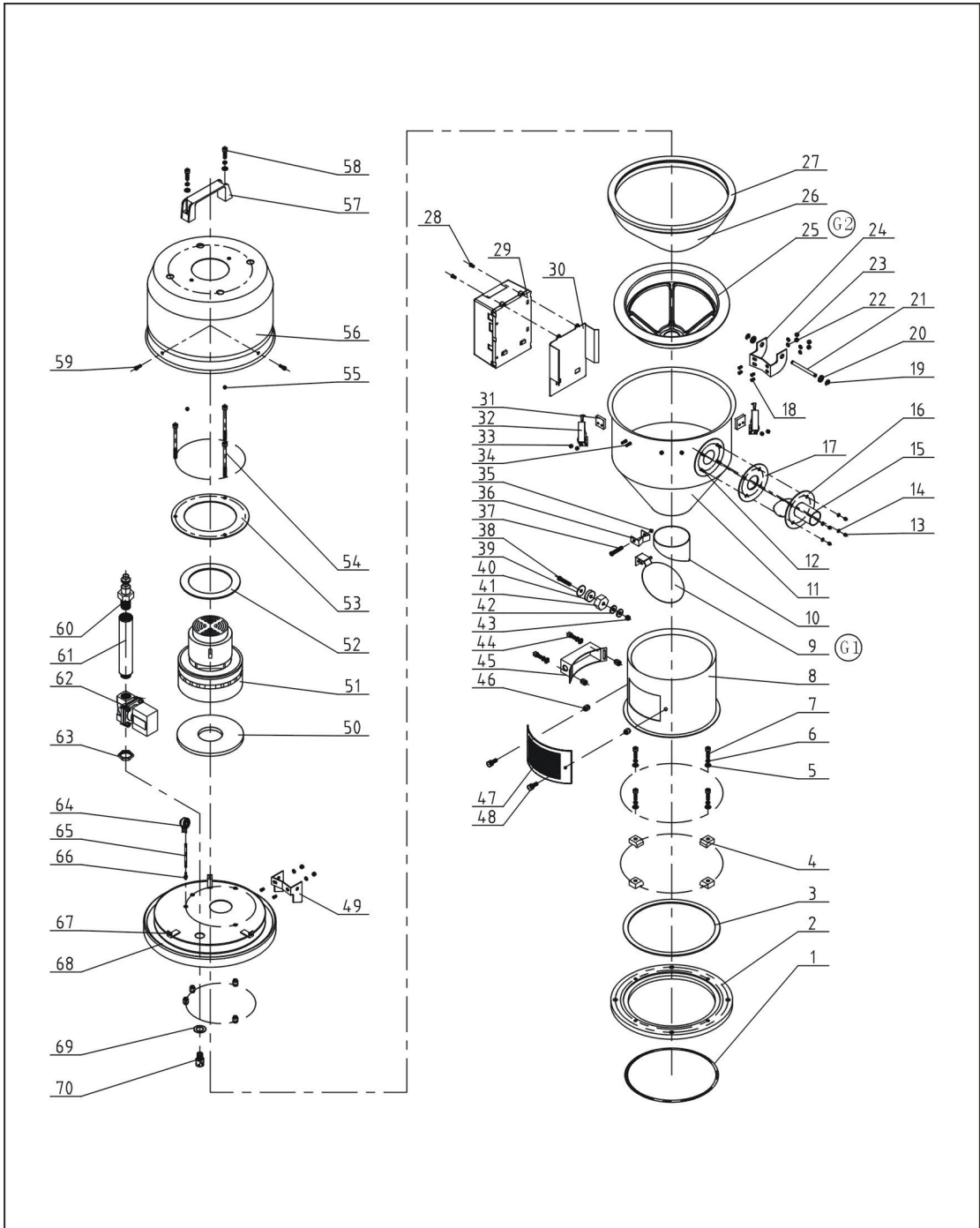
8. Parts List (SAL-3U-E)

No.	Name	Part No.	No.	Name	Part No.
1	Mounting flange	BH13060100040	32	Photosensor fixing base	BL90001000120
2	3" stainless steel pipe clamp	YW07000300000	33	Pressure block of photosensor	YW31616200000
3	Cap nut M6	YR20802600000	34	Cross socket head cap screw M4×10	YW63041000000
4	Cap nut M6	YW64006000100	35	Photosensor	YE15143900300
5	Glass pipe down flange	BH13062600010	36	Photosensor mounting block (come with photosensor)	-
6	Glass pipe ring	YR10060200000	37	Photosensor fixing plate	BL21061200020
7	Glass pipe*	YW70317000600	38	Reverse clean pipe nozzle	BH13033000810
8	Flange connection shaft	BH10000600640	39	Upper hinge	BL32000600240
9	Non-return flap	-	40	Blower ring (down)	YR10070000000
10	Discharging port	BW32060300610	41	Carbon brush motor 1.15kW	YM30965600000
11	Glass pipe upper flange	BH13062400010	42	Blower ring (upper)	YP62141200000
12	Locknut M4×0.7	YW64040700100	43	Blower fixing board	BL21000300420
13	Flat washer 4	YW66040800000	44	Inner hexagon cylindrical screw M6×90	YW61069000100
14	Material inlet pipe	BL32333600020	45	Locknut M6	YW64000600200
15	Material inlet pipe fixing plate	BL20036000320	46	Blower shell	YR40000300100
16	Material inlet pipe ring	YR10150300000	47	Square aluminum handle L120	BW20012000040
17	E-rings 6	YW63051000000	48	Flat washer 6	YW66061300000
18	Flat washer M8×22	YW66082200100	49	Spring washer 6	YW65006000000
19	Hinge pin	BH10006003110	50	Inner hexagon cylindrical screw M6×20	YW61062000300
20	Flat washer 5	YW66051000100	51	Cross socket head cap screw M5×15	YW62051500000
21	Locknut M5	YW64000500000	52	Quick connector 3" ×1/4PT	YW80031400000
22	Down hinge	BL32000600140	53	Connector 3	BH13031100010
23	Filter cloth split washer**	YR40003000100	54	Solenoid valve*	YE32213100000
24	Hop-pocket **	BP82003000044	55	Pressure switch	YE15002000100
25	Hopper ring*	YR10000300100	56	Connector 2	BH13030300010
26	Control box	YR40030600000	57	Blue air pipe Φ6×Φ4	YR60060400000
27	Snap hook block	YR40000600800	58	Pressure switch connector	BH11103000010
28	Snap hook	YW02003000400	59	Connection nut 1	BH12030400410
29	Material storage tank	-	60	Blower cover fixing base	-
30	Hopper base plate ring	-	61	Hopper cover	-
31	Set screw M4×5	YW68004500000	62	Washer Φ30×Φ17×2	BP62352100050

* means possible broken parts. ** means easy broken parts. A spare backup is suggested.

Please confirm the version of manual is compatible with equipment before placing the purchase order to guarantee that the item number of the spare part is in accordance with the real object.

9. Assembly Drawing (SAL-6U)



Remarks: Please refer to material list 10 for specific explanation of the numbers in parts drawing.

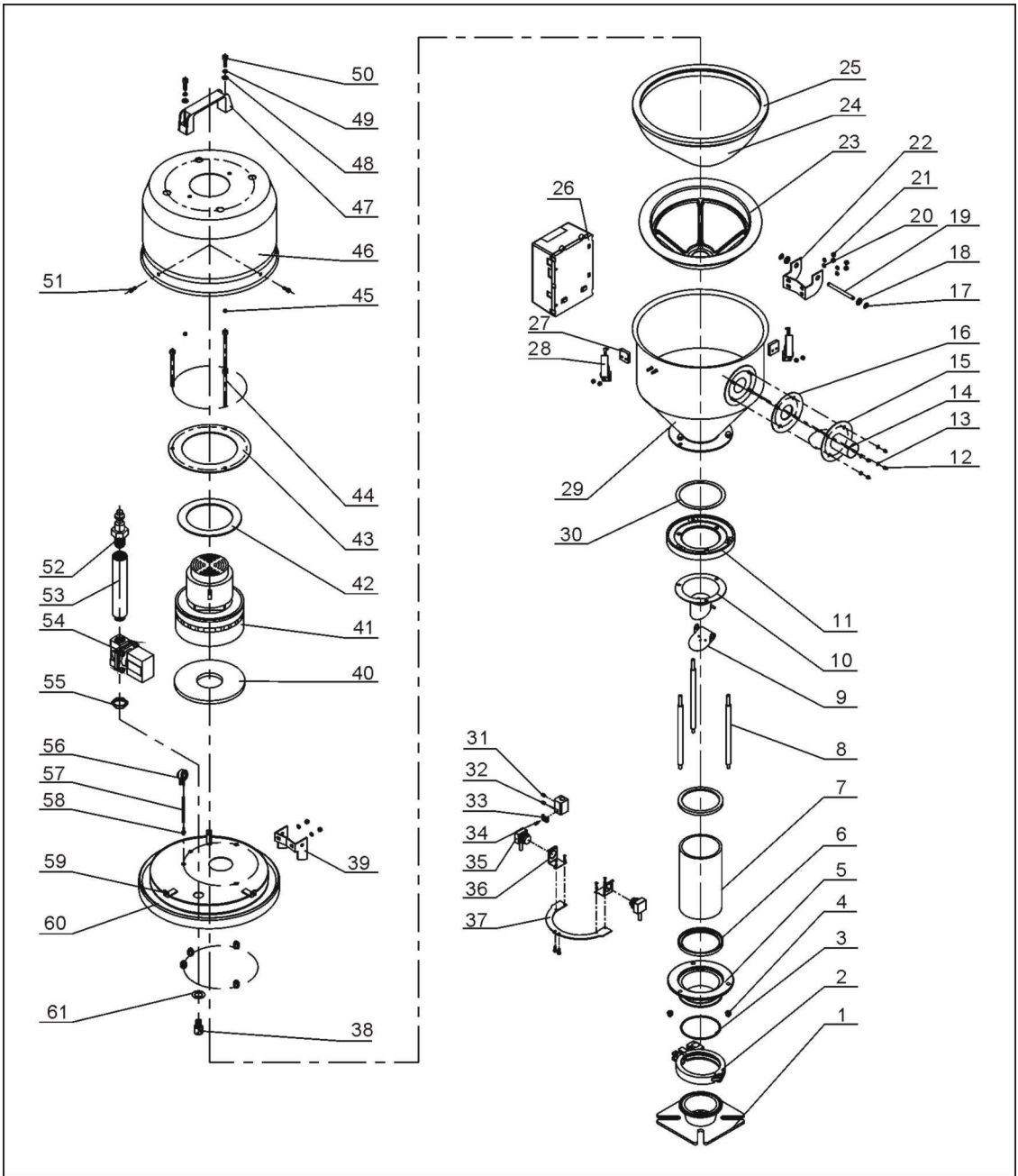
10. Parts List (SAL-6U)

No.	Name	Part No.	No.	Name	Part No.
1	O-Type seal ring	YR20205500000	36	Fixing base of baffle plate	BL20000601220
2	Base	YW20006000000	37	Cross socket head cap screw M3×40	YW63034000000
3	Base ring	-	38	Cross socket head cap screw M6×20	YW63062000000
4	Pressure block	YW20000600500	39	Magnet cover	BL21000600120
5	Spring washer M6	YW65006000100	40	Permanent magnet	YW90257700000
6	Flat washerΦ6	YW66061300000	41	Magnet sleeve	BH12000600010
7	Inner hexagon screw M6×20	YW61062000300	42	Flat washer Φ8×22	YW66082200100
8	Hopper fixing base	BL21000600020	43	Locknut M6	YW64000600200
9	Baffle plate	BL21000302320	44	Inner hexagon cylindrical screw M6×10	YW63061000000
10	Discharging port	BL21000600720	45	Sensor shell	YR40000600100
11	Material storage tank	-	46	Mini-countersunk rivet screw M6	YW64060200000
12	Screw M4×10	YW69041000000	47	Ventilation window	YR40000600500
13	Locknut M4×0.7	YW64040700100	48	Star spanner	YR40061500000
14	Flat washer Φ4	YW66040800000	49	Upper hinge	BL32000600240
15	Material inlet pipe	-	50	Blower ring (down)	YR10070000000
16	Material inlet pipe fixing plate	-	51	Carbon brush motor*	YM30965600000
17	Material inlet pipe ring	-	52	Blower ring (upper)	YP62141200000
18	Screw M5×10	YW64040700100	53	Blower fixing board	-
19	E rings	YW66000500000	54	Inner hexagon cylindrical screw M6×90	YW61069000100
20	Flat washer Φ8×22	YW66082200100	55	Locknut M6	YW64000600200
21	Hinge pin	BH10006003110	56	Blower shell	YR40036000000
22	Flat washer Φ5	YW66051000100	57	L120 Square aluminum handle	BW20012000040
23	Locknut M5	YW64000500000	58	Inner hexagon cylindrical screw M6×20	YW61062000300
24	Down hinge	BL32000600140	59	Cross socket head cap screw M5×15	YW62051500000
25	Filter cloth split washer**	YR40006000000	60	Quick connector	YW80031400000
26	Hop-pocket **	BP82006000044	61	Connector 2	BH13030300010
27	Hopper ring*	YR10000600200	62	Solenoid valve*	YE32213100000
28	Cross socket head cap screw M4×6	YW63040600000	63	Connection nut	BH12030400410
29	Control box	YR40030600000	64	Pressure switch	YE15002000100
30	Control box base	-	65	Blue air pipe	YR60060400000
31	Block	YR40000600300	66	Pressure switch connector	BH11103000010
32	Snap hook	YW02003000400	67	Blower shell fixing base	-
33	Locknut M4×0.7	YW64040700100	68	Hopper cover	-
34	Screw M4×15	YW69041500100	69	Washer	BP62352100050
35	Locknut M3	YW64000300000	70	Reverse clean pipe nozzle	BH13033000810

* means possible broken parts. ** means easy broken parts. A spare backup is suggested.

Please confirm the version of manual is compatible with equipment before placing the purchase order to guarantee that the item number of the spare part is in accordance with the real object.

11. Assembly Drawing (SAL-6U-E)



Remarks: Please refer to material list 12 for specific explanation of the numbers in parts drawing.

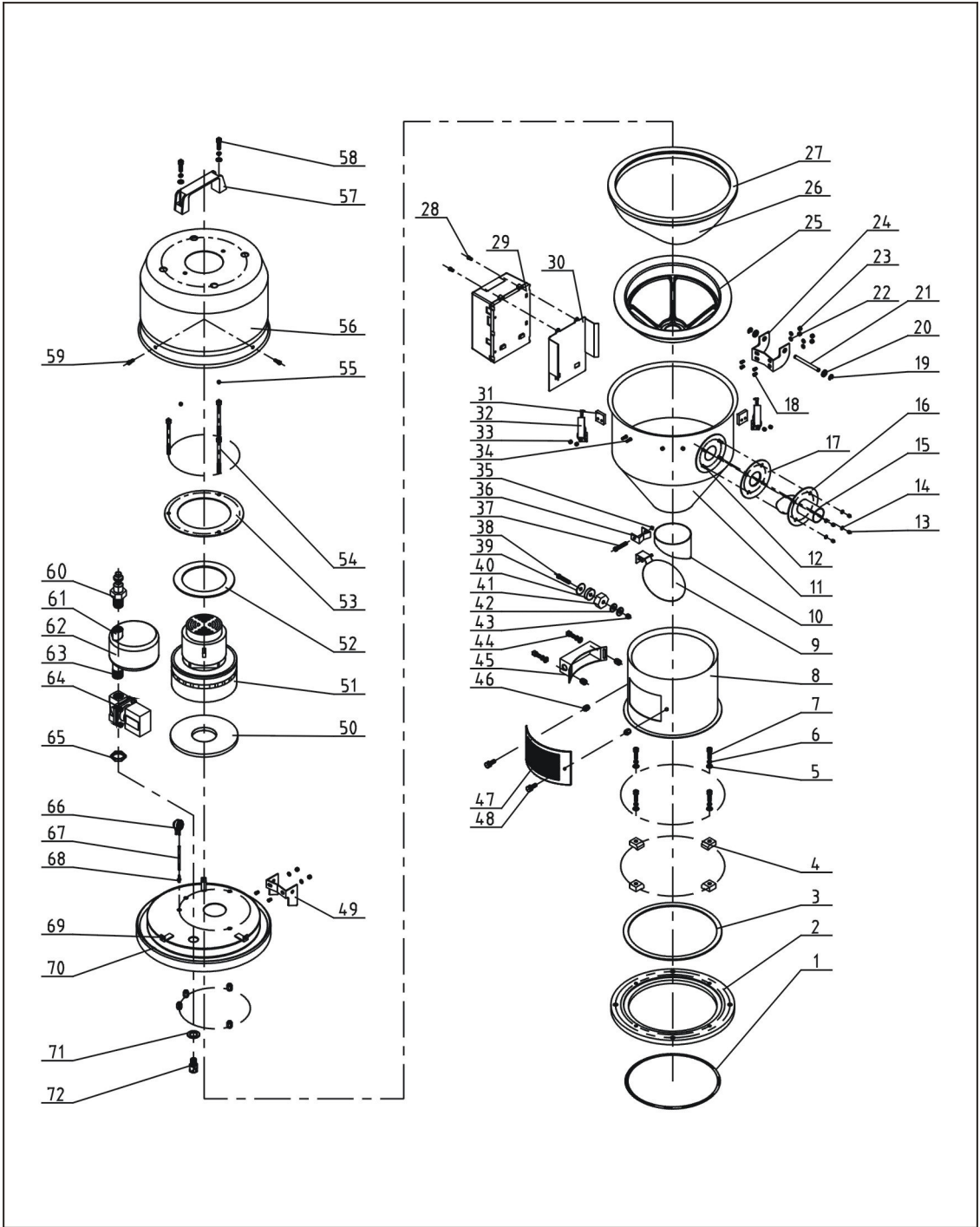
12. Parts List (SAL-6U-E)

No.	Name	Part No.	No.	Name	Part No.
1	Mounting flange	BH13060100040	32	Photosensor fixing base	BL90001000120
2	3" stainless steel pipe clamp	YW07000300000	33	Photosensor pressure block	YW31616200000
3	Cap nut M6	YR20802600000	34	Cross socket head cap screw M4×10	YW63041000000
4	Cap nut M6	YW64006000100	35	photosensor	YE15143900300
5	Glass pipe down flange	BH13062600010	36	Photosensor mounting block (come with photosensor)	-
6	Glass pipe ring	YR10060200000	37	Photosensor fixing plate	BL21061200020
7	Glass pipe*	YW70317000600	38	Reverse clean pipe nozzle	BH13033000810
8	Flange connection shaft	BH10000600640	39	Upper hinge	BL32000600240
9	Non-return flap	-	40	Blower ring (down)	YR10070000000
10	Discharging port	BW32060300610	41	Carbon brush motor 1.15kW	YM30965600000
11	Glass pipe upper flange	BH13062400010	42	Blower ring (upper)	YP62141200000
12	Locknut M4×0.7	YW64040700100	43	Blower fixing board	BL21000300420
13	Flat washer 4	YW66040800000	44	Inner hexagon cylindrical screw M6×90	YW61069000100
14	Material inlet pipe	-	45	Locknut M6	YW64000600200
15	Material inlet pipe fixing plate	BL20036000320	46	Blower shell	BL22001200220
16	Material inlet pipe ring	YR10061200000	47	Square aluminum handle L120	BW20012000040
17	E-rings 6	YW63051000000	48	Flat washer 6	YW66061300000
18	Flat washer M8×22	YW66082200100	49	Spring washer 6	YW65006000000
19	Hinge pin	BH10006003110	50	Inner hexagon cylindrical screw M6×20	YW61062000300
20	Flat washer 5	YW66051000100	51	Cross socket head cap screw M5×15	YW62051500000
21	Locknut M5	YW64000500000	52	Quick connector 3" ×1/4PT	YW80031400000
22	Down hinge	BL32000600140	53	Connector 2	BH13030300010
23	Filter cloth split washer**	YR40006000000	54	Solenoid valve*	YE32213100000
24	Hop-pocket **	BP82003000044	55	Connection nut 1	BH12030400410
25	Hopper ring*	YR10000300100	56	Pressure switch	YE15002000100
26	Control box	YR40030600000	57	Blue air pipe Φ6×Φ4	YR60060400000
27	Snap hook block	YR40000600300	58	Pressure switch connector	BH11103000010
28	Snap hook	YW02003000400	59	Blower cover fixing base	-
29	Material storage tank	-	60	Hopper cover	-
30	Hopper base plate ring	-	61	Washer Φ30×Φ17×2	BP62352100050
31	Set screw M4×5	YW68004500000			

* means possible broken parts. ** means easy broken parts. A spare backup is suggested.

Please confirm the version of manual is compatible with equipment before placing the purchase order to guarantee that the item number of the spare part is in accordance with the real object.

13. Assembly Drawing (SAL-6U-A)



Remarks: Please refer to material list 14 for specific explanation of the numbers in parts drawing.

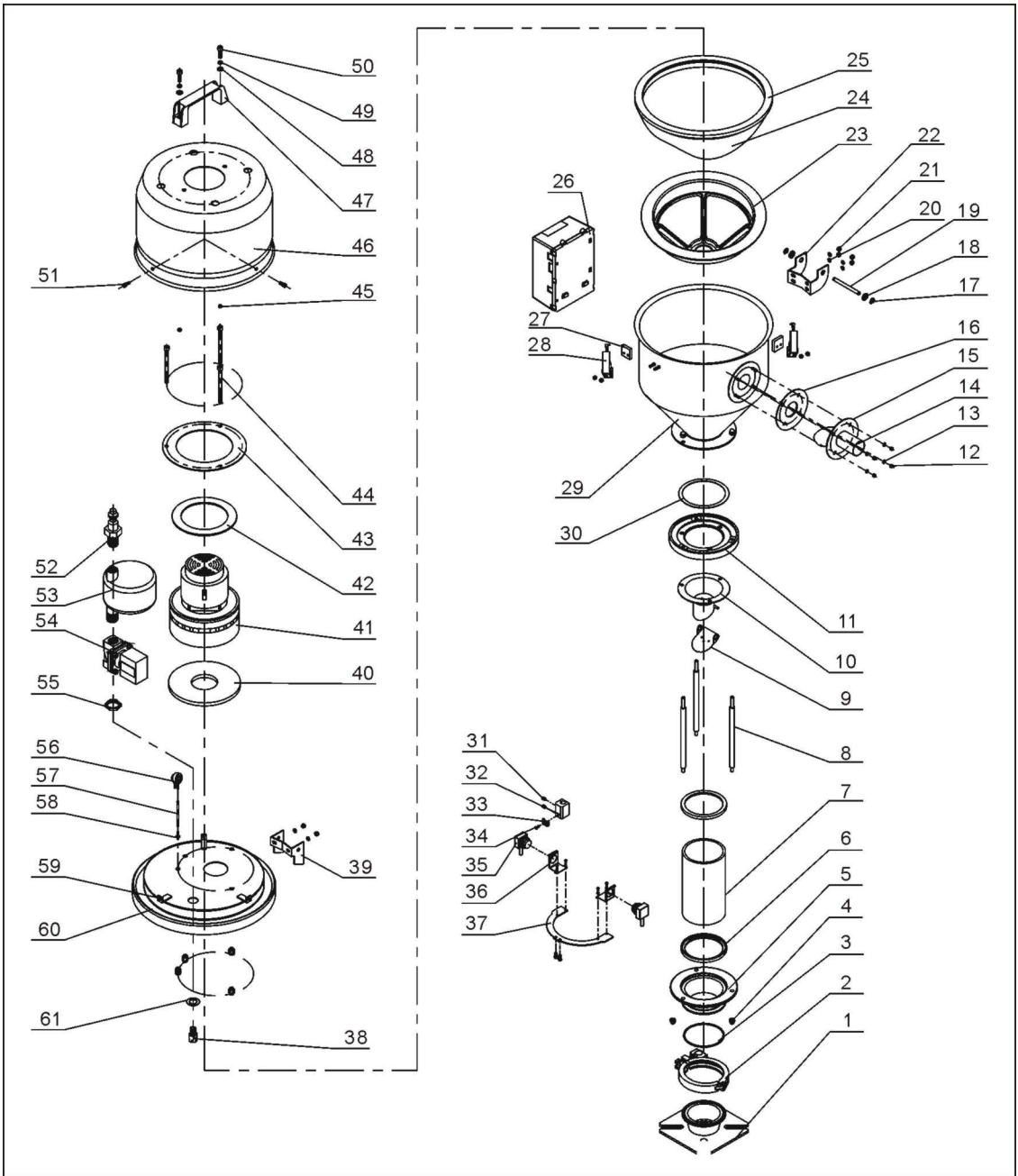
14. Parts List (SAL-6U-A)

No.	Name	Part No.	No.	Name	Part No.
1	O-Type seal ring	YR20205500000	37	Cross socket head cap screw M3×40	YW63034000000
2	Base	YW20006000000	38	Cross socket head cap screw M6×20	YW63062000000
3	Base ring	-	39	Magnet cover	BL21000600120
4	Pressure block	YW20000600500	40	Permanent magnet	YW90257700000
5	Spring washer M6	YW65006000100	41	Magnet sleeve	BH12000600010
6	Flat washer Φ6	YW66061300000	42	Flat washer Φ8×22	YW66082200100
7	Inner hexagon screw M6×20	YW61062000300	43	Locknut M6	YW64000600200
8	Hopper fixing base	BL21000600020	44	Inner hexagon cylindrical screw M6×10	YW63061000000
9	Baffle plate*	BL21000302320	45	Sensor shell	YR40000600100
10	Discharging port	BL21000600720	46	Mini-countersunk rivet screw M6	YW64060200000
11	Material storage tank	-	47	Ventilation window	YR40000600500
12	Screw M4×10	YW69041000000	48	Star spanner	YR40061500000
13	Locknut M4×0.7	YW64040700100	49	Upper hinge	BL32000600240
14	Flat washer Φ4	YW66040800000	50	Blower ring (down)	YR10070000000
15	Material inlet pipe	-	51	Carbon brush motor*	YM30965600000
16	Material inlet pipe fixing piece	-	52	Blower ring (upper)	YP62141200000
17	Material inlet pipe ring	-	53	Blower fixing board	-
18	Screw M5×10	YW64040700100	54	Inner hexagon cylindrical screw M6×90	YW61069000100
19	E rings	YW66000500000	55	Locknut M6	YW64000600200
20	Flat washer Φ8×22	YW66082200100	56	Blower shell	YR40036000000
21	Hinge pin	BH10006003110	57	L120 Square aluminum handle	BW20012000040
22	Flat washer Φ5	YW66051000100	58	Inner hexagon cylindrical screw M6×20	YW61062000300
23	Locknut M5	YW64000500000	59	Cross socket head cap screw M5×15	YW62051500000
24	Down hinge	BL32000600140	60	Quick connector	YW80031400000
25	Filter cloth split washer**	YR40006000000	61	Connection nut 1	-
26	Hop-pocket **	BP82006000044	62	Air accumulator	-
27	Hopper ring*	YR10000600200	63	Connection nut 2	-
28	Cross socket head cap screw M4×6	YW63040600000	64	Solenoid valve*	YE32213100000
29	Control box	YR40030600000	65	Connection nut	BH12030400410
30	Control box base	-	66	Pressure switch	YE15002000100
31	Block	YR40000600300	67	Blue air pipe	YR60060400000
32	Snap hook	YW02003000400	68	Pressure switch connector	BH11103000010
33	Locknut M4×0.7	YW64040700100	69	Blower cover fixing base	-
34	Screw M4×15	YW69041500100	70	Hopper cover	-
35	Locknut M3	YW64000300000	71	Washer	BP62352100050
36	Fixing base of baffle plate	BL20000601220	72	Reverse clean pipe nozzle	BH13033000810

* means possible broken parts. ** means easy broken parts. A spare backup is suggested.

Please confirm the version of manual is compatible with equipment before placing the purchase order to guarantee that the item number of the spare part is in accordance with the real object.

15. Assembly Drawing (SAL-6U-EA)



Remarks: Please refer to material list 16 for specific explanation of the numbers in parts drawing.

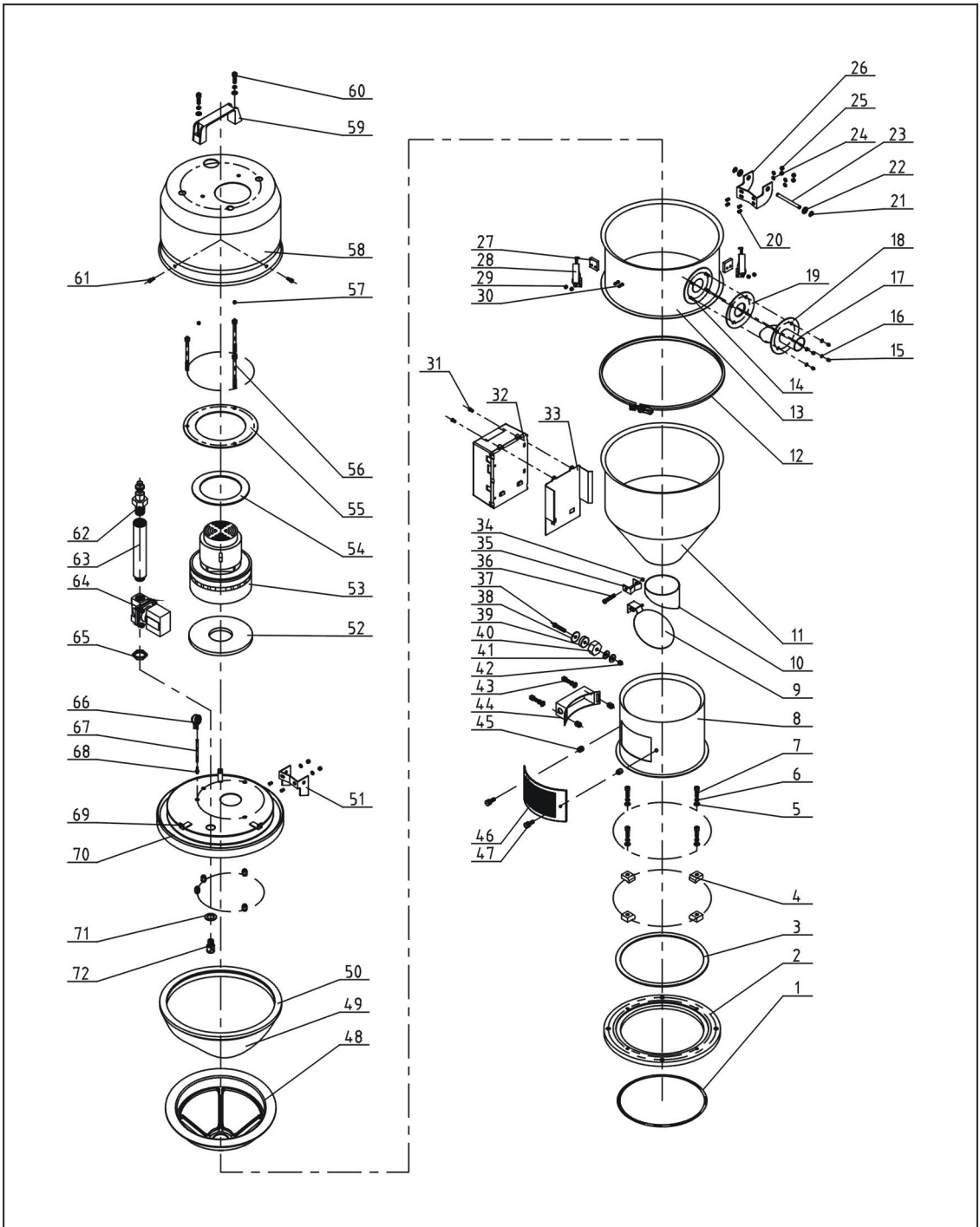
16. Parts List (SAL-6U-EA)

No.	Name	Part No.	No.	Name	Part No.
1	Mounting flange	BL21060200820	32	Photosensor fixing base	BL90001000120
2	3" stainless steel pipe clamp	YW07000300000	33	Photosensor pressure block	YW31616200000
3	Cap nut M6	YR20802600000	34	Cross socket head cap screw M4×10	YW63041000000
4	Cap nut M6	YW64006000100	35	Photosensor	YE15143900000
5	Glass pipe down flange	BW32610900010	36	Photosensor mounting block (come with photosensor)	-
6	Glass pipe ring	YR10060200000	37	Photosensor fixing plate	BL21061200020
7	Glass pipe*	YW70317000600	38	Reverse clean pipe nozzle	BH13033000810
8	Flange connection shaft	BH10000600640	39	Upper hinge	BL32000600240
9	Non-return flap	-	40	Blower ring (down)	YR10070000000
10	Discharging port	-	41	Carbon brush motor 1.15kW	YM30965600000
11	Glass pipe upper flange	BW32610800010	42	Blower ring (upper)	YP62141200000
12	Locknut M4×0.7	YW64040700100	43	Blower fixing board	BL21000300420
13	Flat washer 4	YW66040800000	44	Inner hexagon cylindrical screw M6×90	YW61069000100
14	Material inlet pipe	BL32000600020	45	Locknut M6	YW64000600200
15	Material inlet pipe fixing plate	BL20036000320	46	Blower shell	BL22001200220
16	Material inlet pipe ring	YR10061200000	47	Square aluminum handle L120	BW20012000040
17	E-rings 6	YW63051000000	48	Flat washer 6	YW66061300000
18	Flat washer M8×22	YW66082200100	49	Spring washer 6	YW65006000000
19	Hinge pin	BH10006003110	50	Inner hexagon cylindrical screw M6×20	YW61062000300
20	Flat washer 5	YW66051000100	51	Cross socket head cap screw M5×15	YW62051500000
21	Locknut M5	YW64000500000	52	Quick connector 3" ×1/4PT	YW80031400000
22	Down hinge	BL32000600140	53	Air accumulator	-
23	Filter cloth split washer**	YR40006000000	54	Solenoid valve*	YE32213100000
24	Hop-pocket **	BP82003000044	55	Connection nut 1	BH12030400410
25	Hopper ring *	YR10000300100	56	Pressure switch	YE15002000100
26	Control box	YR40030600000	57	Blue air pipe Φ6×Φ4	YR60060400000
27	Snap hook block	YR40000600300	58	Pressure switch connector	BH11103000010
28	Snap hook	YW02003000400	59	Blower cover fixing base	-
29	Material storage tank	-	60	Hopper cover	-
30	Hopper base plate ring	-	61	Washer Φ30×Φ17×2	BP62352100050
31	Set screw M4×5	YW68004500000			

* means possible broken parts. ** means easy broken parts. A spare backup is suggested.

Please confirm the version of manual is compatible with equipment before placing the purchase order to guarantee that the item number of the spare part is in accordance with the real object.

17. Assembly Drawing (SAL-12U)



Remarks: Please refer to material list 18 for specific explanation of the numbers in parts drawing.

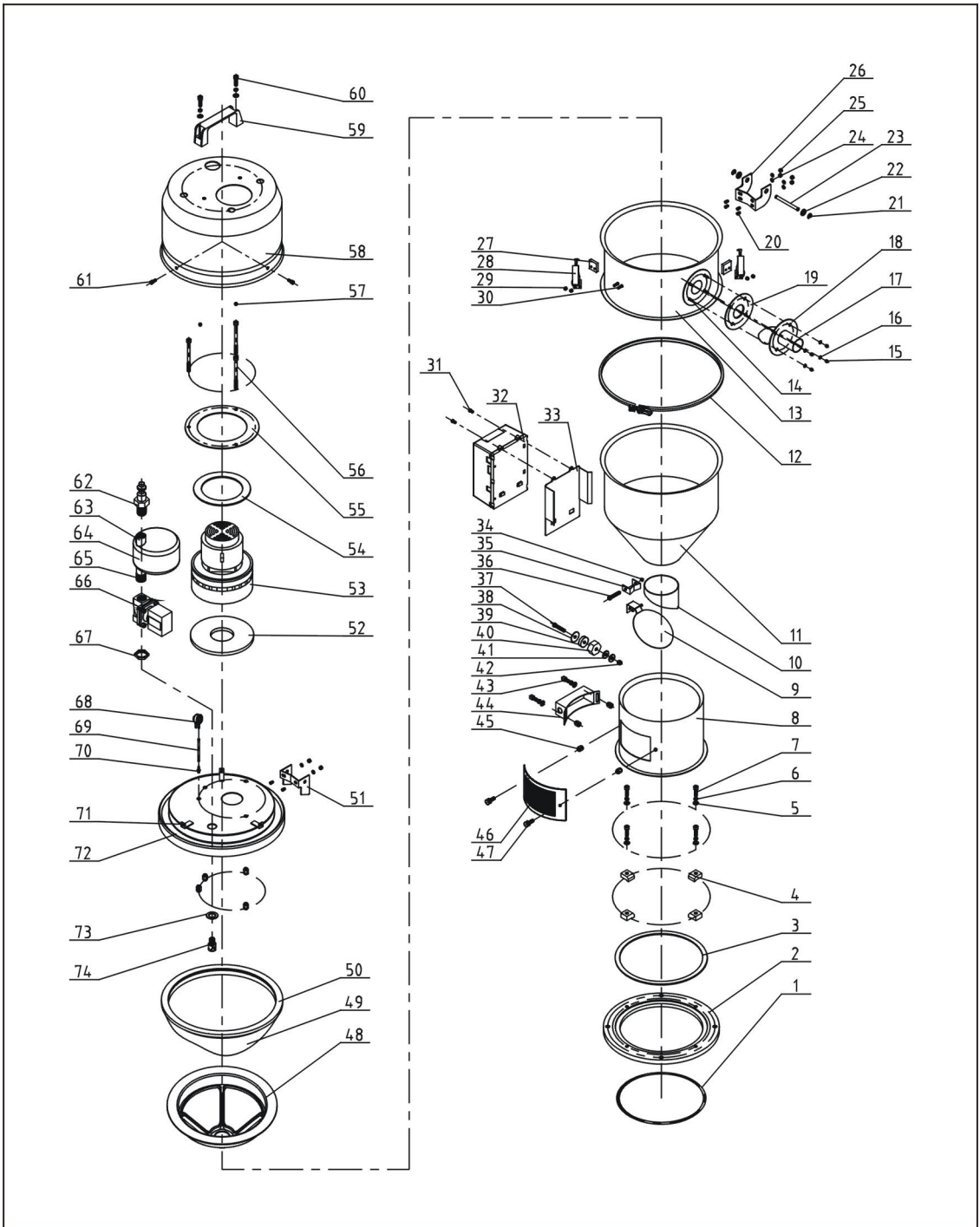
18. Parts List (SAL-12U)

No.	Name	Part No.	No.	Name	Part No.
1	O-Type seal ring	YR20205500000	37	Cross socket head cap screw M6×20	YW63062000000
2	Base	YW20006000000	38	Magnet cover	BL21000600120
3	Base ring	-	39	Permanent magnet	YW90257700000
4	Pressure block	YW20000600500	40	Magnet sleeve	BH12000600010
5	Spring washer M6	YW65006000100	41	Flat washer Φ8×22	YW66082200100
6	Flat washer Φ6	YW66061300000	42	Locknut M6	YW64000600200
7	Inner hexagon screw M6×20	YW61062000300	43	Inner hexagon cylindrical screw M6×10	YW63061000000
8	Hopper fixing base	BL21000600020	44	Sensor shell	YR40000600100
9	Baffle plate *	BL21000302320	45	Mini-countersunk rivet screw M6	YW64060200000
10	Discharging port	BL21000600720	46	Ventilation window	YR40000600500
11	Material storage tank	-	47	Star spanner	YR40061500000
12	Pipe clamp	BH11120400010	48	Filter cloth split washer**	YR40006000000
13	Extra large material tank	-	49	Hop-pocket **	BP82006000044
14	Screw M4×10	YW69041000000	50	Hopper ring *	YR10000600200
15	Locknut M4×0.7	YW64040700100	51	Upper hinge	BL32000600240
16	Flat washer Φ4	YW66040800000	52	Blower ring (down)	YR10070000000
17	Material inlet pipe	-	53	Carbon brush motor*	YM30965600000
18	Material inlet pipe fixing plate	-	54	Blower ring (upper)	YP62141200000
19	Material inlet pipe ring	-	55	Blower fixing board	-
20	Screw M5×10	YW64040700100	56	Inner hexagon cylindrical screw M6×90	YW61069000100
21	E rings	YW66000500000	57	Locknut M6	YW64000600200
22	Flat washerΦ8×22	YW66082200100	58	Blower shell	YR40036000000
23	Hinge pin	BH10006003110	59	L120 Square aluminum handle	BW20012000040
24	Flat washer Φ5	YW66051000100	60	Inner hexagon cylindrical screw M6×20	YW61062000300
25	Locknut M5	YW64000500000	61	Cross socket head cap screw M5×15	YW62051500000
26	Down hinge	BL32000600140	62	Quick connector	YW80031400000
27	Block	YR40000600300	63	Connector 2	BH13030300010
28	Snap hook	YW02003000400	64	Solenoid valve*	YE32213100000
29	Lockup nut M4×0.7	YW64040700100	65	Connection nut	BH12030400410
30	Screw M4×15	YW69041500100	66	Pressure switch	YE15002000100
31	Cross socket head cap screw M4×6	YW63040600000	67	Blue air pipe	YR60060400000
32	Control box	YR40030600000	68	Pressure switch connector	BH11103000010
33	Control box base	-	69	Blower cover fixing base	-
34	Locknut M3	YW64000300000	70	Hopper cover	-
35	Fixing base of baffle plate	BL20000601220	71	Washer	BP62352100050
36	Cross socket head cap screw M3×40	YW63034000000			

* means possible broken parts. ** means easy broken parts. A spare backup is suggested.

Please confirm the version of manual is compatible with equipment before placing the purchase order to guarantee that the item number of the spare part is in accordance with the real object.

19. Assembly Drawing (SAL-12U-A)



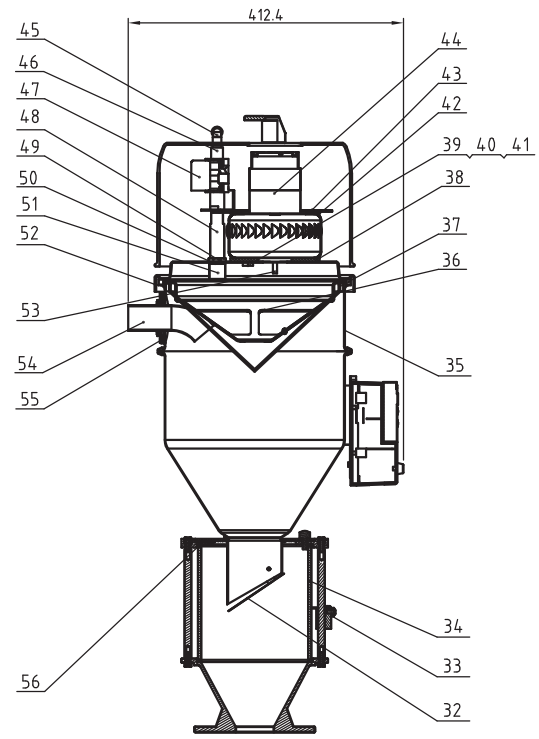
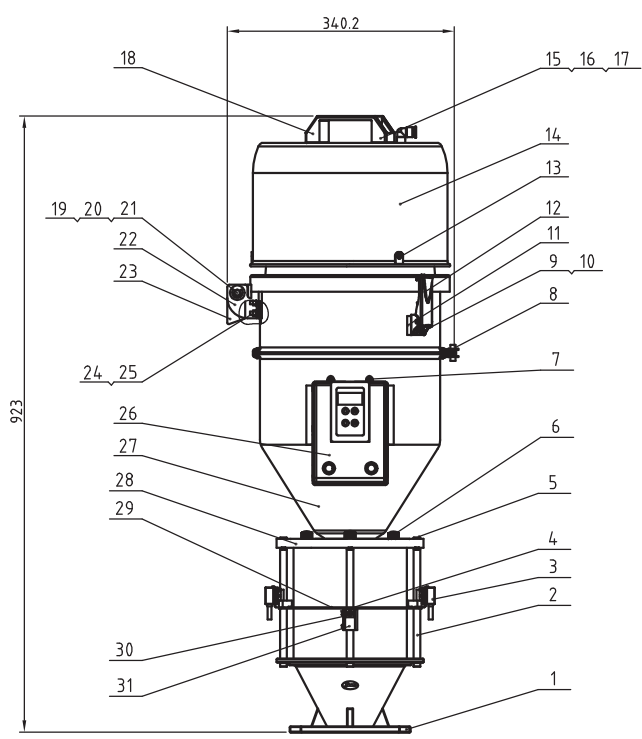
Remarks: Please refer to material list 20 for specific explanation of the Arabic numbers in parts drawing.

20. Parts List (SAL-12U-A)

No.	Name	Part No.	No.	Name	Part No.
1	O-Type seal ring	YR20205500000	38	Magnet cover	BL21000600120
2	Base	YW20006000000	39	Permanent magnet	YW90257700000
3	Base ring	-	40	Magnet sleeve	BH12000600010
4	Pressure block	YW20000600500	41	Flat washer $\Phi 8 \times 22$	YW66082200100
5	Spring washer M6	YW65006000100	42	Locknut M6	YW64000600200
6	Flat washer $\Phi 6$	YW66061300000	43	Inner hexagon cylindrical screw M6 \times 10	YW63061000000
7	Inner hexagon screw M6 \times 20	YW61062000300	44	Sensor shell	YR40000600100
8	Hopper fixing base	BL21000600020	45	Mini-countersunk rivet screw M6	YW64060200000
9	Baffle plate*	BL21000302320	46	Ventilation window	YR40000600500
10	Discharging port	BL21000600720	47	Star spanner	YR40061500000
11	Material storage tank	-	48	Filter cloth split washer**	YR40006000000
12	Pipe clamp	BH11120400010	49	Hop-pocket **	BP82006000044
13	Extra large material tank	-	50	Hopper ring *	YR10000600200
14	Screw M4 \times 10	YW69041000000	51	Upper hinge	BL32000600240
15	Locknut M4 \times 0.7	YW64040700100	52	Blower ring (down)	YR10070000000
16	Flat washer $\Phi 4$	YW66040800000	53	Carbon brush motor*	YM30965600000
17	Material inlet pipe	BL32000600020	54	Blower ring (upper)	YP62141200000
18	Material inlet pipe fixing plate	-	55	Blower fixing board	-
19	Material inlet pipe ring	YR10061200000	56	Inner hexagon cylindrical screw M6 \times 90	YW61069000100
20	Screw M5 \times 10	YW64040700100	57	Locknut M6	YW64000600200
21	E rings	YW66000500000	58	Blower shell	YR40036000000
22	Flat washer $\Phi 8 \times 22$	YW66082200100	59	L120 Square aluminum handle	BW20012000040
23	Hinge pin	BH10006003110	60	Inner hexagon cylindrical screw M6 \times 20	YW61062000300
24	Flat washer $\Phi 5$	YW66051000100	61	Cross socket head cap screw M5 \times 15	YW62051500000
25	Locknut M5	YW64000500000	62	Quick connector	YW80031400000
26	Down hinge	BL32000600140	63	Connection nut 1	-
27	Block	YR40000600300	64	Air accumulator	-
28	Snap hook	YW02003000400	65	Connection nut 2	-
29	Locknut M4 \times 0.7	YW64040700100	66	Solenoid valve*	YE32213100000
30	Screw M4 \times 15	YW69041500100	67	Connection nut	-
31	Cross socket head cap screw M4 \times 6	YW63040600000	68	Pressure switch	YE15002000100
32	Control box	YR40030600000	69	Blue air pipe	YR60060400000
33	Control box base	-	70	Pressure switch connector	-
34	Locknut M3	YW64000300000	71	Blower cover fixing base	-
35	Fixing base of baffle plate	BL20000601220	72	Hopper cover	-
36	Cross socket head cap screw M3 \times 40	YW63034000000	73	Washer	BP62352100050
37	Cross socket head cap screw M6 \times 20	YW63062000000	74	Reverse clean pipe nozzle	-

* means possible broken parts. ** means easy broken parts. A spare backup is suggested.

Please confirm the version of manual is compatible with equipment before placing the purchase order to guarantee that the item number of the spare part is in accordance with the real object.

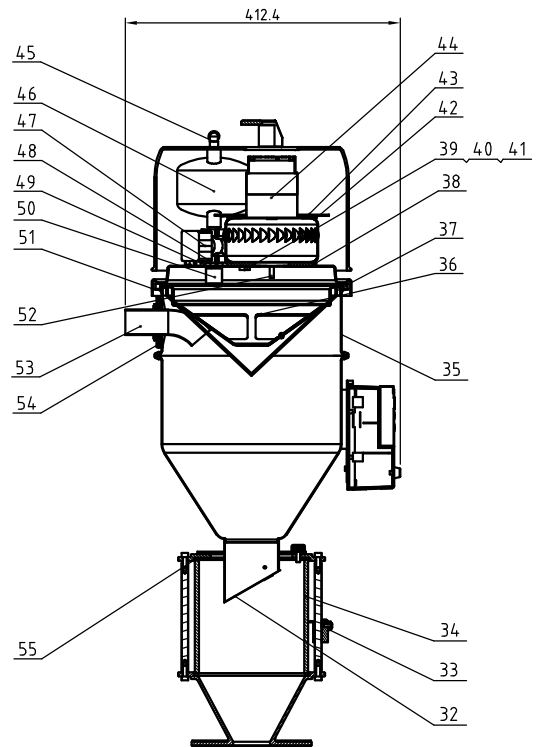
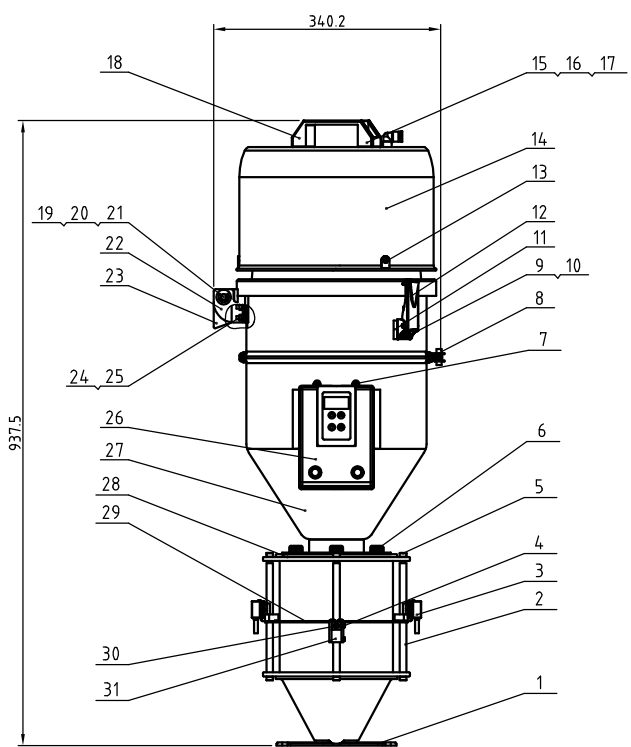


45	YW800814.00100	L-type screw connector APL8-02 V4-08	AirTAC	1	
44	YM30965600000	Carbon motor 1ø220V 1150W	Assembly	1	
43	SAL-3U-A-13	Motor fixed plate	SECC2.0	1	BL21000300420 borrowed
42	YP6214.1200000	Motor fastener (upper)	EVA3.0	1	
41	SAL-6U-42	Pressure switch connector	SUS201	1	BH1100300010 borrowed
40	YR600604.00000	Blue air pipe ø6xø4	Plastics	1	
39	YE15002000100	Pressure switch-150mbar	Assembly	1	
38	SAL-6U-A-25	Motor fastener (lower)	EVA5.0	1	YR10135500000 borrowed
37	SAL-6U-A-27	Hopper fastener & filter cloth assembly	Rubber	1	BP82006000044 borrowed
36	SAL-6U-A-18	Filter cloth ring	Plastics	1	YR40006000000 borrowed
35	SAL-12U-A-03	Large hopper	SUS201	1	BL21001201520 borrowed
34	SVH-12L-A-02	Glass pipe ø170xø160x170	Glass	1	YW70171700000 borrowed
33	SVH-6L-ALL-11	Phosensor pressing block	SUS430	1	YW31616200000 borrowed
32	SVH-12L-A-08	Non-return piece	SUS201	1	BL21001200520 borrowed
31	SVH-6L-ALL-10	Phosensor fixed base	YL12	1	BL90001000120 borrowed
30	YW6304.1200100	Cross recessed pan head screw GB/T-818 M4X12-Longzine		4	
29	SVH-12L-A-01	Phosensor fixed piece	SUS201	1	BL21001200120 borrowed
28	SVH-12L-A-07	Glass pipe upper flange	YL112	1	BW22121000110 borrowed
27	SAL-12U-E-A-ALL-01	Material storage tank	Assembly	1	
26	SAL-6U-A-43	Control box	Rubber	1	YR40030600100 borrowed
25	YW64.000500000	Hex. nut M5 anti-loose		6	
24	YW66051000100	Flat washer A grade GB/T91.15-Longzine		6	
23	SAL-6U-11	Upper hinge	SPCC3.0	1	BL32000600240 borrowed
22	SAL-6U-12	Lower hinge	SPCC3.0	1	BL32000600140 borrowed
21	SAL-6U-31	Hinge pin	SUS201	1	BH10006003110 borrowed
20	YW66082200100	Large washer C grade GB/T968197.1.8.4X24X2- Longzine		2	
19	YW66000600000	Open ring GB/T896 6		2	
18	BW20012000040	Square alu. handle L120		1	
17	YW66061300000	Flat washer A grade GB/T91.16-Longzine		4	
16	YW65006000100	Standard spring washer GB/T93 4-Longzine		2	
15	YW61062000300	Inner hex. column head screw GB/T70.1 M6x20-12.9-Longzine		2	
14	SAL-6U-A-23	Motor cover	Plastics	1	YR40036000000 borrowed
13	YW62051000100	Large cross socket flat head screw H5111 M5x10-Longzine		3	
12	YW02003000400	Snap hook	Assembly	2	
11	YR4.00006003000	Snap hook pad	ABS	2	
10	YW66040800000	Flat washer A grade GB/T91.14-Longzine		8	
9	YW64.040700100	Non-metal insert hex. lock nut GB/T889.1M4		8	
8	SAL-12U-A-04	Pipe clamp	Assembly	1	
7	YW6304.1200100	Cross recessed pan head screw GB/T-818 M4X12- Longzine		2	
6	YW69621600000	Manual screw M6x15		3	
5	YW61061601200	Inner hex. column head screw GB/T70.1 M6x16-12.9-Longzine		8	
4	YW68004500000	Inner hexagon socket set screw with flat point B/T77 M4x5-Longzine		2	
3	YE1514.3900000	Phosensor FOTEK T18-3MN-PE	Assembly	1pair	
2	SVH-12L-A-06	Flange connecting rod	Q235A	4	BH10101600110 borrowed
1	SVH-12L-A-10	Glass pipe lower flange	YL112	1	YW32001200210 borrowed

56	YR10001200100	Glass pipe fastener	Silic gel	2	
55	SAL-6U-A-16	Inlet pipe fastener	Rubber	1	YR10061200000 borrowed
54	SAL-6U-A-14	Inlet pipe	SUS201	1	BL32000600020 borrowed
53	YW61069000100	Inner hex. column head screw GB/T70.1 M6x9-12.9- Longzine		3	
52	SAL-6U-A-05	Hopper cover	SUS201	1	BL21000600020 borrowed
51	SAL-330-A-08	Reverse spraying nozzle	6061	1	BH13033000810 borrowed
50	BR10281500050	Reverse pipe fastener	Rubber	1	
49	SAL-3U-A-04	Connecting nut	H58	1	BH12030400410 borrowed
48	SAL-3U-A-11	Connector 2	6061	1	BH1303100010 borrowed
47	YE32213100000	Solenoid valve	Assembly	1	
46	SAL-3U-A-3	Connector 2	6061	1	BH13030300010 borrowed

Tech.Req:
 1. Main parameters:
 a. Max. conveying capacity: 400Kg/hr(Test mat. bulk density is 0.65Kg/L);
 b. Machine power: 1ø, 230VAC,50Hz;
 c. Motor power: 1.15kw;
 d. Effective hopper capacity: 12L;

				制图	版号	L	标题	SAL-12U-E-A-ALL	图号	SAL-12U-E-A-ALL	比例	1:7	数量	1
				设计	核		装配图						材质	组合件
(M1)	Ver.A	Ver.B		20211223	校						表面要求			
标记	更改前	更改后	更改人	日期	审核	日期	20211223	信易电热机械股份有限公司 Shini Plastics Technologies, Inc.			物料号			



Tech.Req:
 1. Main parameters:
 a. Max. conveying capacity: 400Kg/hr(Test mat. bulk density is 0.65Kg/L);
 b. Machine power: 1Φ, 230VAC,50Hz;
 c. Motor power: 1.15kw;
 d. Effective hopper capacity: 12L;

55	YR10001200100	Glass pipe fastener	Silic gel	2	borrowed	9	YW64040700100	Non-metal insert hex. lock nut GB/T889.1M4		8	
54	SAL-6U-A-16	Inlet pipe fastener	Rubber	1	YR10061200000 borrowed	8	SAL-12U-A-04	Pipe clamp	Assembly	1	borrowed
53	SAL-6U-A-14	Inlet pipe	SUS201	1	borrowed	7	YW63041200100	Cross recessed pan head screw GB/T-818 M4X12-Longzine		2	
52	YW61069000100	Inner hex. column head screw GB/T70.1 M6X90-12.9-Longzine		3		6	YW69621600000	Manual screw M6x15		3	
51	SAL-6U-A-05	Hopper cover	SUS201	1	BL2100600020 borrowed	5	YW61061601200	Inner hex. column head screw GB/T70.1 M6x16-12.9-Longzine		8	
50	SAL-330-A-08	Reverse spraying nozzle	6061	1	BH13033000810 borrowed	4	YW68004500000	Inner hexagon socket set screw with flat point GB/T77 M4x5-Longzine		2	
49	BR10281500050	Reverse pipe fastener	Rubber	1		3	YE1514.3900000	Photosensor FOTEK T18-3MN-PE	Assembly	1	pair
48	SAL-3U-A-04	Connecting nut	H58	1	BH12030400410 borrowed	2	SVH-12L-A-06	Flange connecting rod Q235A		4	BH10101600110 borrowed
47	YE32213100000	Solenoid valve	Assembly	1		1	SVH-12L-10	Glass pipe lower flange	YL112	1	BW32001200210 borrowed
46	SAL-6U-A-A-01	Air accumulator	Assembly	1	borrowed						

45	YW800814.00100	L-type screw connector APLB-02 1/4-#8	AirTAC	1							
44	YM30965600000	Carbon motor 1Φ220V 1150W	Assembly	1							
43	SAL-3U-A-13	Motor fixed plate	SECC2.0	1	BL21000300420 borrowed						
42	YP62141200000	Motor fastener (upper)	EVA3.0	1							
41	SAL-6U-42	Pressure switch connector	SUS201	1	borrowed						
40	YR60060400000	Blue air pipe Φ6xΦ4	Plastics	1							
39	YE15002000100	Pressure switch-150mbar	Assembly	1							
38	SAL-6U-A-25	Motor fastener (lower)	EVA5.0	1	YR10135500000 borrowed						
37	SAL-6U-A-27	Hopper fastener & filter cloth assembly	Rubber	1	YR40006000000 borrowed						
36	SAL-6U-A-18	Filter cloth ring	Plastics	1							
35	SAL-12U-A-03	Large hopper	SUS201	1							
34	SVH-12L-A-02	Glass pipe Φ170xΦ160x170	Glass	1	YW70171700000 borrowed						
33	SVH-6L-ALL-11	Photosensor pressing block	SUS430	1	YW31616200000 borrowed						
32	SVH-12L-A-08	Non-return piece	SUS201	1	BL21001200520 borrowed						
31	SVH-6L-ALL-10	Photosensor fixed base	YL12	1	BL90001000120 borrowed						
30	YW63041200100	Cross recessed pan head screw GB/T-818 M4X12-Longzine		4							
29	SVH-12L-A-01	Photosensor fixed piece	SUS201	1	BL21001200120 borrowed						
28	SVH-12L-07	Glass pipe upper flange	YL112	1	BW22121000110 borrowed						
27	SVH-12L-A-03	Material storage tank	Assembly	1							
26	SAL-6U-A-43	Control box	Plastics	1	YR40030600100 borrowed						
25	YW64000500000	Hex. nut M5 anti-loose		6							
24	YW66051000100	Flat washer A grade GB/T91.15-Longzine		6							
23	SAL-6U-11	Upper hinge	SPCC3.0	1	BL32000600240 borrowed						
22	SAL-6U-12	Lower hinge	SPCC3.0	1	BL32000600140 borrowed						
21	SAL-6U-31	Hinge pin	SUS201	1	BH10006003110 borrowed						
20	YW66082200100	Large washer C grade GB/T5681.911.8.4X24X2-Longzine		2							
19	YW66000600000	Open ring GB/T896.6		2							
18	BW20012000040	Square alu. handle L120	YL12	1							
17	YW66061300000	Flat washer A grade GB/T91.16-Longzine		4							
16	YW65006000100	Standard spring washer GB/T93.4-Longzine		2							
15	YW61062000300	Inner hex. column head screw GB/T70.1 M6X20-12.9-Longzine		2							
14	SAL-6U-A-23	Motor cover	Plastics	1	YR40036000000 borrowed						
13	YW62051000100	Large cross socket flat head screw JIS1111 M5-10-Longzine		3							
12	YW02003000400	Snap hook	Assembly	2							
11	YR40000600300	Snap hook pad	ABS	2							
10	YW66040800000	Flat washer A grade GB/T91.14-Longzine		8							

制图	版号	J	标题	SAL-12U-EA	图号	SAL-12U-EA -A-ALL	比例	1:7	数量	1	备注	
设计	核准		装配图								材质	组合件
校对	日期	20211223	表面要求								物料号	
标记	更改前	更改后	更改人	日期	审核	日期	20211223	SHINI 信易电热机械股份有限公司 Shini Plastics Technologies, Inc.				