

46	YW64.000500000	Hexagonal nut M5 anti loosening		6	
45	BL3206110004.0	Up hinge SAL-6U-11	SPCC3.0	1	
44	BL3206120004.0	Lower hinge SAL-6U-12	SPCC3.0	1	
43	BH10006003110	Hinge sales SAL-6U-A-31	SUS201	1	
42	YW66000600000	Open end retaining ring Q270S6 6 6		2	
41	YW66082200100	Large pulley 6 grade Q270S6.1 4 Q202 Hexamet		2	
40	YW62051000100	Cross groove large flat head screw M10H Hexamet		6	
39	BL210003004.20	Motor fixing plate SAL-3U-A-13	SECC2.0	1	
38	YR10135500000	Filter bracket light M5 outer diameter 15 * 10 * 10	EVA5.0	1	
37	YW61069000100	Hexagonal nut flat top screw Q270.1 M6*3.1 Hexamet		3	
36	YM30965600000	Carbon brush holder 120*140*1.15H/brushage	Assembly	1	
35	BW21275100010	Internal beam SAL-6U25 * 191 (SAL-6U-A-20)	YL112	1	
34	YR20205500000	O-ring inner diameter 8 200 * 5.5	Rubber	1	
33	YP60102500100	Thin lip type with flat head M4 screw with anti-loosening	EVA2.0	0.68	
32	YW61062000300	Hexagonal nut flat top screw Q270.1 M6*3.1 Hexamet		4	
31	YW65006000100	Standard spring washer Q270S 6 Hexamet		4	
30	YW66061300000	Flat washer A/797.1 6 Hexamet rust		4	
29	BW20000630500	Grinding block SAL-6U-A-13	YL112	4	
28	YW64.04.0700100	Non metallic embedded hexagonal lock nut M		4	
27	YR10061200000	Tighten the feeding tube SAL-6U-A-16	Rubber	1	
26	BL32000600020	Thin SL-6U-A-14 for the SAL-300 feeding tube	SUS201	1	
25	YR4.00060000000	Filter cloth retaining ring 65 * 4 * 10 (PVC)	PBT	1	
24	BP8200600004.4	Bag SAL-6U (270 * 90 * 95)	Assembly	1	
23	BH13033000810	Lockwash pipe nozzle SAL-300-A-10 (AL)	AC4D	1	
22	BR10281500050	Tighten SAL-300 (20 * 15mm) lockwash tube	Rubber	1	
21	BH120304.00410	Connecting nut SAL-3U-A-04 (CU)	CU	1	
20	YW90036000600	Large Spring Coasting bracket SAL-300-A-06 Hexamet 1 Q202	Assembly	1	
19	YE15123000000	Hexagonal nut with M5 screw thread 10mm flat top screw	Assembly	1	
18	YR4.0000601100	Lower bearing 20 * 4 * 10 with M2*4 screw thread flat end	ABS	1	
17	YW610616101200	Hexagonal nut flat top screw Q270.1 M6*3.1 Hexamet		2	
16	YW66061300000	Flat washer A grade Q270.1 6 Hexamet		2	
15	YR4.00615000000	Star handle SAL-6U-06/M5 * 16	Plastic	2	
14	YR4.00006010000	Plastic breakable Window SAL-6U-01	ABS	1	
13		Hopper component	SUS304	1	
12		Pipe clamp	Assembly	1	
11		Extra large hopper	SUS201	1	BL21001201520
10	YW64.04.0700100	Metal embedded hexagonal lock nut M		4	
9	YW6604.1000000	Flat washer grade A 4 (4.5*20*1.8)		4	
8	YR4.00006008000	Spring handle plastic pad SAL-6U (white)	ABS	2	
7	YW020030004.00	Adjustable spring handle SAL-6U-A-3 (yellow)	SUS	2	
6		Hopper cover	Assembly	1	
5	YE83121200100	Non light ring 10 * 10 * 10 mm with 10mm outer ring	Assembly	1	
4		Motor outer cover fixing seat	SUS201	3	
3	YW62051000100	Cross groove large flat head screw M10H		3	
2	YR4.00360000000	Plastic motor cover SAL-6U/250 white	Plastic	1	
1	BW2001200004.0	Aluminum square handle L120	YL112	1	

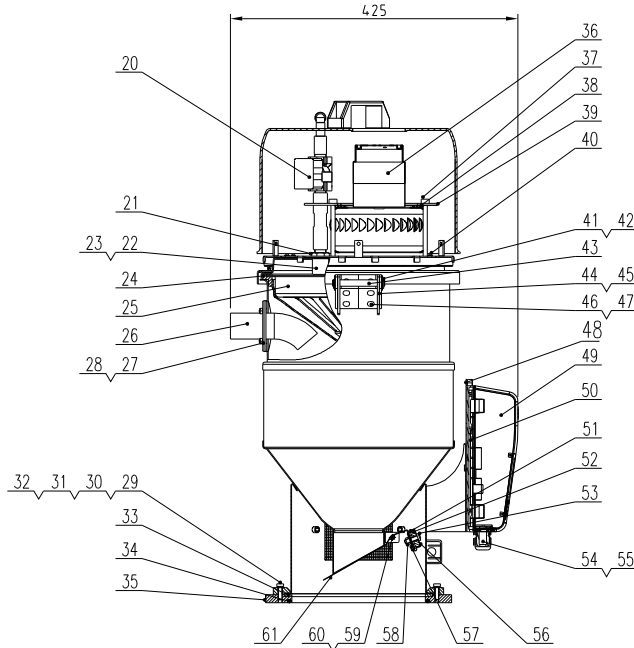
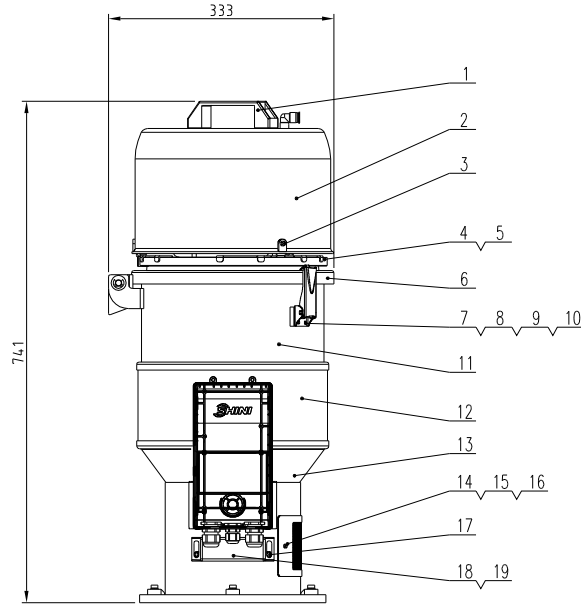
61	BL21000602320	Dropboard SAL-6U-A-06	SUS201	1	
60	YW64.000300000	Anti loosening nut M3		1	
59	YW63034.0000000	Cross groove pin head screw Q270S6 Hexamet		1	
58	YW64.000600200	Hexagonal nut M5 (anti loosening)		1	
57	YW66082200100	Large pulley 6 grade Q270S6.1 4 Q202 Hexamet		1	
56	BL21000600120	Magnet cover SAL-6U-07	SUS201	1	
55	YE67013500000	Cable head PG13.5		2	
54	YE6700094.00000	Cable head PG9		1	
53	YW63063000000	Cross groove pin head screw Q270S6 Hexamet		1	
52	YW90257700000	Permanent magnet 25 * 8 * 7	Permanent magnet	1	
51	BH12000600010	Magnet sleeve SAL-6U-19	H58	1	
50		Lower shell of electrical control box	ABS	1	
49		Upper shell of electrical control box	ABS	1	
48	YW6004.1200600	Hexagonal nut flat top screw Q270.1 M6*3.1 Hexamet		2	
47	YW66051000000	Flat washer A/797.1 6 Hexamet rust		6	

Technical requirements:

1. When the motor wire passes between the hopper cover and the motor cover, it should be noted that the neon light strip with serial number<5>cannot be squeezed;
2. Main performance parameters:
  - a. The maximum conveying capacity is 400Kg/hr (the bulk density of the tested raw material is 0.65Kg/L);
  - b. The machine voltage specification is 1-phase, 230VAC, 50Hz;
  - c. The motor power is 1.15kw;
  - d. The effective capacity of the storage hopper is 12L.

制图	版号	J					
设计	核准						
校对	核准						
标记	更改前	更改后	更改人	日期	审核	日期	2024.0125

标题	SAL-12U	图号	SAL-12U-A-ALL	比例	1:1	数量	1
欧化直立式真空填料机				材质	组件		
SHINI 信易电热机械股份有限公司 Shini Plastics Technologies, Inc.				表面要求	/		
				物料号	/		



**Technical requirements:**

1. When the motor wire passes between the hopper cover and the motor cover, it should be noted that the neon light strip with serial number<5>cannot be squeezed; When installing the glass tube SHR-12U-V-04 with serial number<12>, the glass glue should be evenly applied and then tightly adhered with serial number<11><13>;
2. Main performance parameters:
  - a. The maximum conveying capacity is 400Kg/hr (the bulk density of the tested raw material is 0.65Kg/L);
  - b. The machine voltage specification is 1-phase, 230VAC, 50Hz;
  - c. The motor power is 1.15kw;
  - d. The effective capacity of the storage hopper is 12L.

46	YW64.000500000	Hexagonal nut M5 anti-loosening		6	
45	BL3206110004.0	Upper hinge SAL-6U-11 (galvanized)	SPCC3.0	1	
44	BL3206120004.0	Lower hinge SAL-6U-12 (galvanized)	SPCC3.0	1	
43	BH10006003110	Hinge pine SAL-6U-A-31	SUS201	1	
42	YW66000600000	Open retaining ring G2/7886 6		2	
41	YW66082200100	Large washer C grade G2/7886 (R.42x2)		2	
40	YW62051000100	Large cross socket flat head screw JIS1111 Hex		6	
39	BL210003004.20	Motor fixed plate SAL-3U-A-13	SECC2.0	1	Borrowed
38	YR10135500000	Filter bottom tightening 800C outer	EVA5.0	1	
37	YW61069000100	Hexagon socket head screw G2/770.1 M5x50		3	
36	YM30965600000	Carbon brush blower 12V/70-00/L 15W	Assembly	1	
35	BW21275100010	Installation base SAL-6U 270*197	YL112	1	
34	YR20205500000	Rubber O-ring inner diameter 200*4.5	Rubber	1	
33	YP60102500100	White PVA sponge tape, width 10MM	EVA2.0	0.68	
32	YW61062000300	Hexagon socket head screw G2/770.1		4	
31	YW65006000100	Standard spring washer G2/783 6		4	
30	YW66061300000	Flat washer A grade G2/783 6-Longline		4	
29	BW20000630500	Pressure block SAL-6U-A-13 grind	YL112	4	
28	YW64.04.0700100	Non-metal insert hexagon lock nut M4		4	
27	YR10061200000	Inlet pipe fastener SAL-6U-A-16	Rubber	1	
26	BL32000600020	SAL-6U-A-14 for feeding pipe SAL-360	SUS201	1	
25	YR4.00060000000	Filter cloth retaining ring SAL-6U-A-18	PBT	1	
24	BP8200600004.4	Bag SAL-6U (270 * 90 * 95)	Assembly	1	
23	BH13033000810	Backlash pipe nozzle SAL-3U-A-04(M)	AC4D	1	
22	BR10281500050	Backlash tube tight SAL-3U (20*15mm)	Rubber	1	
21	BH120304.00410	Connecting nut SAL-3U-A-04 (CU)	CU	1	
20	YW90036000600	Bag spray cleaning device SAL-360-A-07	Assembly	1	
19	YE15123000000	Head switch SHP-300A/05mm long 2W	Assembly	1	
18	YR4.0000601100	Non locking M4*14 with M4*14 finger pin nut	ABS	1	
17	YW61061601200	Hexagon socket head screw G2/770.1		2	
16	YW66061300000	Flat Washer Grade A G2/783.1 6-thick hex		2	
15	YR4.00615000000	Star handle SAL-6U-02/M5*15	Plastic	2	

61	BL21000602320	Blanking plate SAL-6U-A-06	SUS201	1	
60	YW64.000300000	Anti-loosening nut M3		1	
59	YW63034.0000000	Cross recessed pan head screw G2/7-608		1	
58	YW64.000600200	Hexagonal nut M5 (anti-loosening)		1	
57	YW66082200100	Large washer C grade G2/7886.1 (R.42x2)		1	
56	BL21000600120	Magnet cover SAL-6U-07	SUS201	1	
55	YE67013500000	Cable grommet PG13.5		2	
54	YE6700094.0000	Cable grommet PC9		1	
53	YW63063000000	Cross recessed pan head screw G2/7-608		1	
52	YW90257700000	Permanent magnet sheet 25*14*7	Permanent magnet	1	
51	BH12000600010	Magnet sleeve SAL-6U-19	H58	1	
50		Lower shell of electric control box	ABS	1	Borrowed
49		Upper shell of electric control box	ABS	1	Borrowed
48	YW6004.1200600	Hexagon socket head screw G2/770.1		2	
47	YW66051000000	Flat Washer Grade A G2/783.1 6-thick hex		6	

制图	版号	0	标题	SAL-12U-V	图号	SAL-12U-V-ALL	比例	1:1	数量	1	备注	
设计	核准		欧化直结式真空填料机				材质	组件				
校对	日期	2024.0125	SHINI		信易电热机械股份有限公司 Shini Plastics Technologies, Inc.		表面要求	/				
标记	更改前	更改后	更改人	日期	审核	日期	物料号	/				