

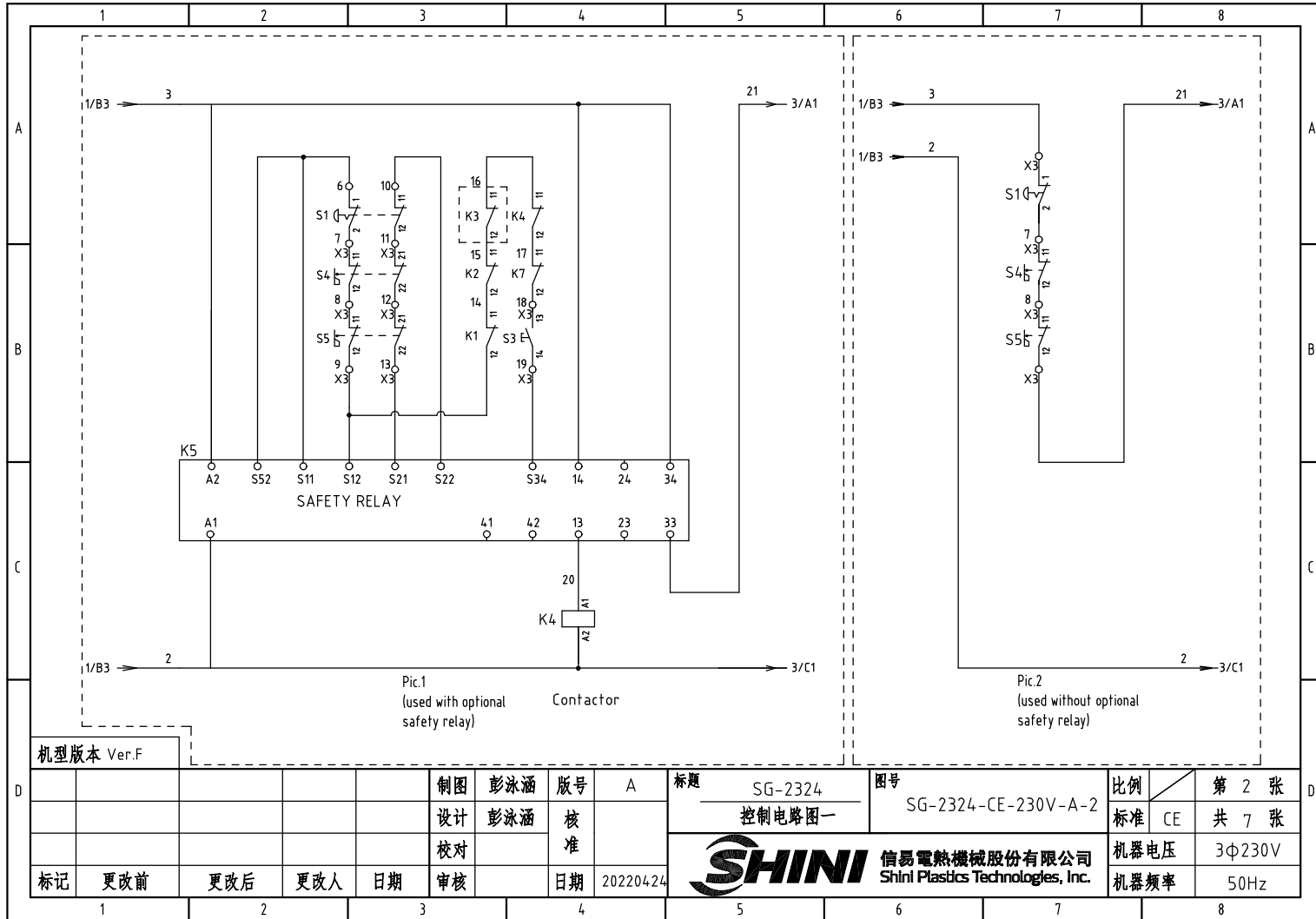
机型版本 Ver.F

					制图	彭泳涵	版号	A
					设计	彭泳涵	核准	
					校对			
标记	更改前	更改后	更改人	日期	审核		日期	20220424


标题	SG-2324 主电路图	图号	SG-2324-CE-230V-A-1
----	-----------------	----	---------------------

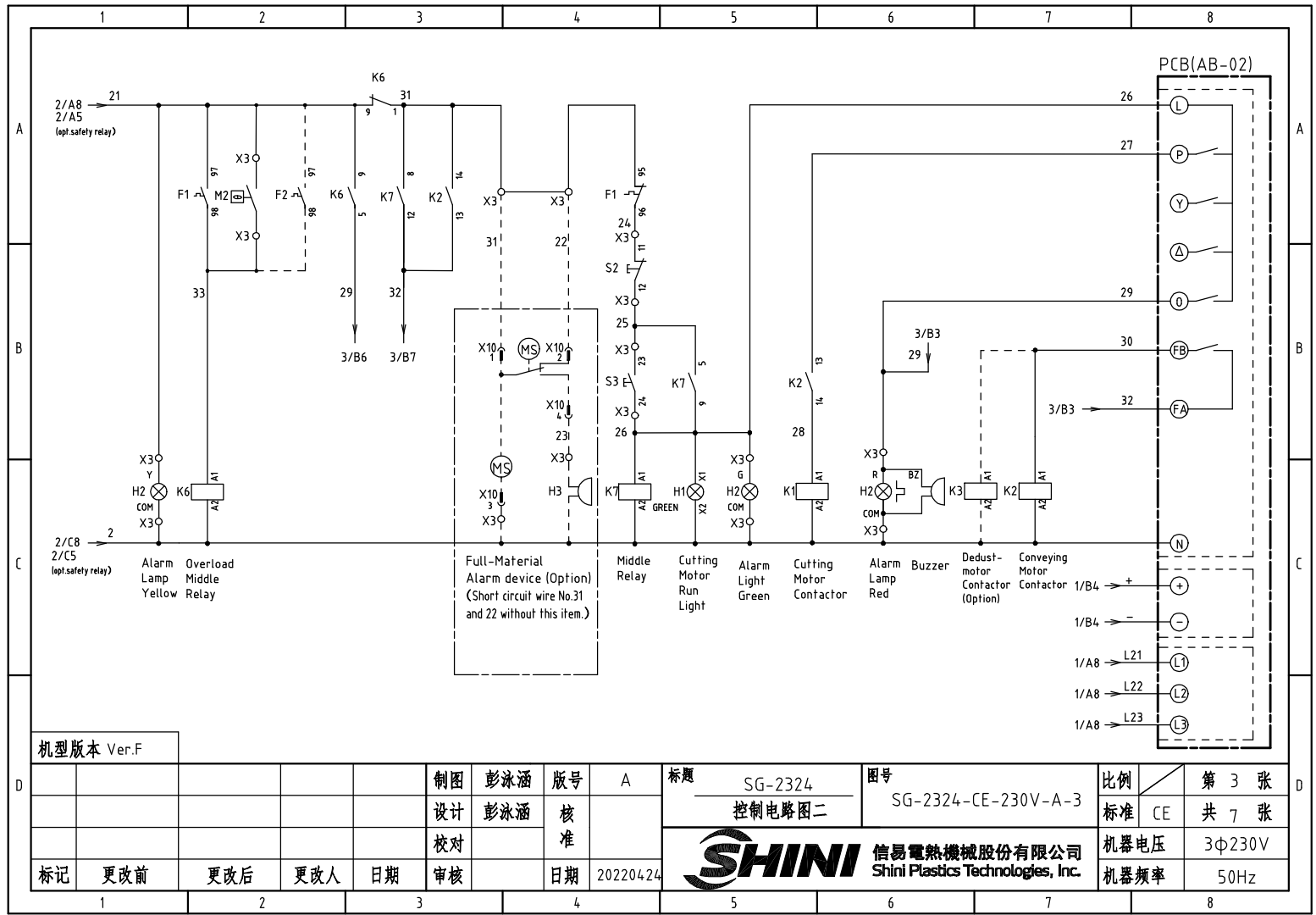
比例	第 1 张
标准	CE 共 7 张
机器电压	3φ230V
机器频率	50Hz





机型版本 Ver.F

					制图	彭泳涵	版号	A	标题	SG-2324	图号	SG-2324-CE-230V-A-2	比例	第 2 张
					设计	彭泳涵	核		控制电路图一			标准	CE	共 7 张
					校对		准		 信易電熱機械股份有限公司 Shini Plastics Technologies, Inc.		机器电压		3Φ230V	
标记	更改前	更改后	更改人	日期	审核	日期	20220424	机器频率			50Hz			



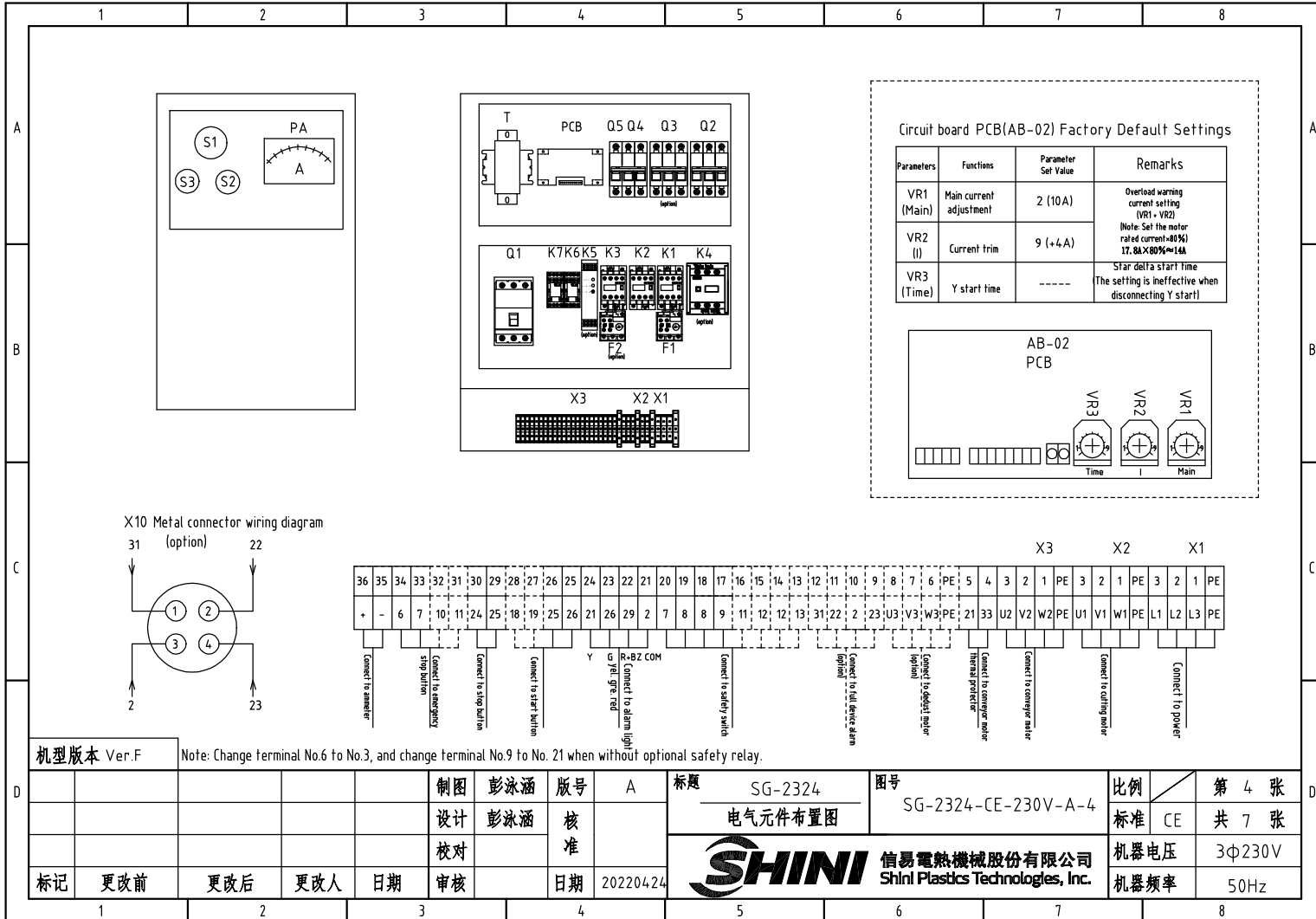
机型版本 Ver.F

					制图	彭泳涵	版号	A
					设计	彭泳涵	核准	
					校对		核准	
标记	更改前	更改后	更改人	日期	审核		日期	20220424

标题 SG-2324 控制电路图二  
图号 SG-2324-CE-230V-A-3

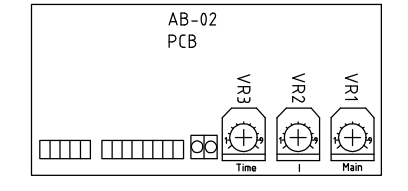


比例	第 3 张
标准	CE 共 7 张
机器电压	3Φ230V
机器频率	50Hz

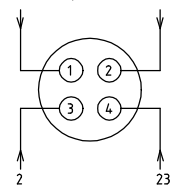


Circuit board PCB(AB-02) Factory Default Settings

Parameters	Functions	Parameter Set Value	Remarks
VR1 (Main)	Main current adjustment	2 (10A)	Overload warning current setting (VR1 + VR2) (Note: Set the motor rated current*80%) 17.8A*80%=14A
VR2 (I)	Current trim	9 (+4A)	
VR3 (Time)	Y start time	-----	Star delta start time (The setting is ineffective when disconnecting Y start)



X10 Metal connector wiring diagram (option)



36	35	34	33	32	31	30	29	28	27	26	25	24	23	22	21	20	19	18	17	16	15	14	13	12	11	10	9	8	7	6	PE	5	4	3	2	1	PE	3	2	1	PE	3	2	1	PE
+	-	6	7	10	11	24	25	18	19	25	26	21	26	29	2	7	8	8	9	11	12	13	13	31	22	2	23	U3	V3	W3	PE	21	33	U2	V2	W2	PE	U1	V1	W1	PE	L1	L2	L3	PE
Connect to ammeter		Connect to emergency stop button		Connect to stop button		Connect to start button		Y		R-BZ COM Connect to alarm light (yellow)		Connect to safety switch		Connect to full device alarm (optional)		Connect to cooling fan (optional)		Connect to emergency stop thermal protector		Connect to emergency stop		Connect to emergency stop		Connect to cutting motor		Connect to power																			


机型版本 Ver.F

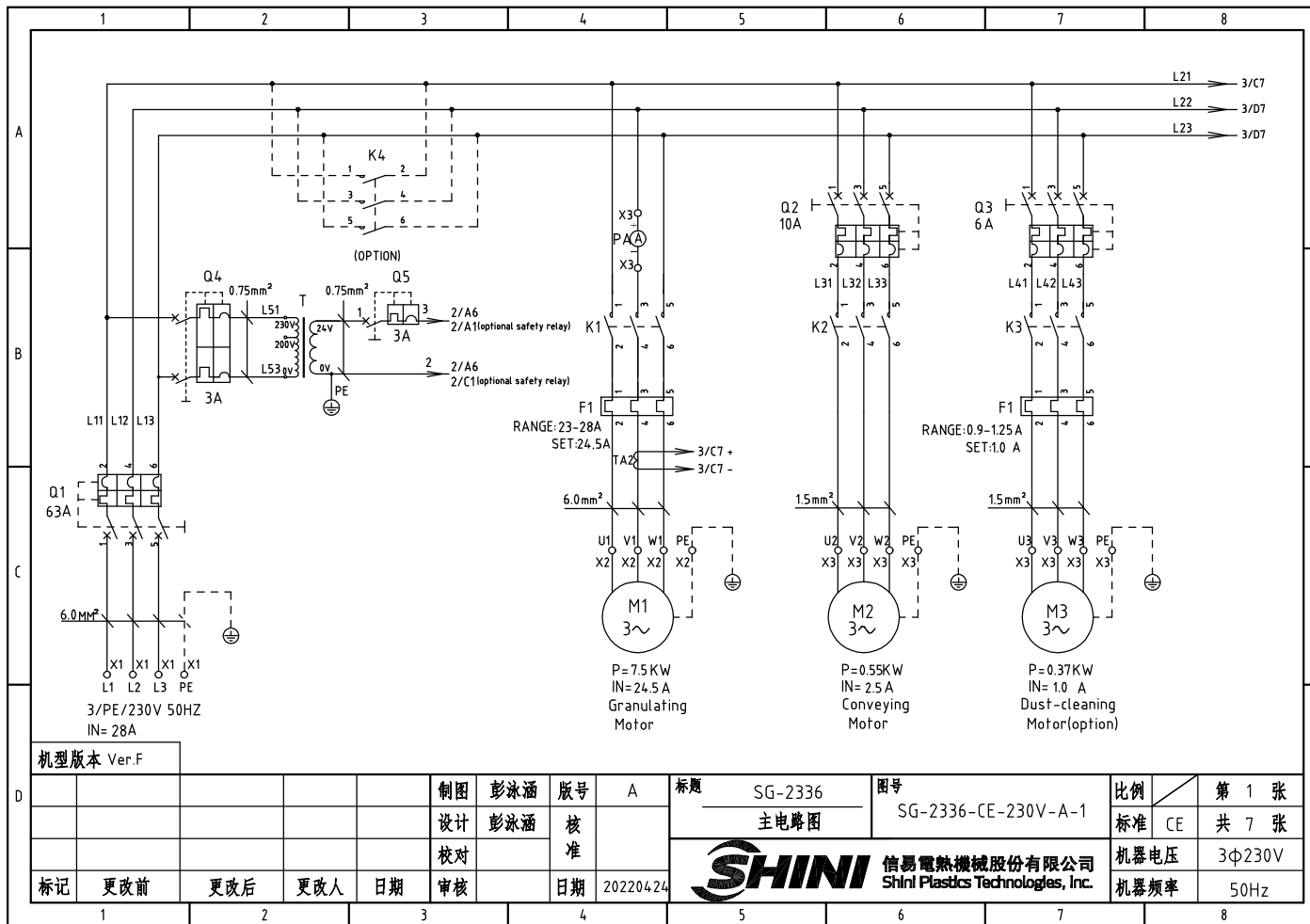
Note: Change terminal No.6 to No.3, and change terminal No.9 to No. 21 when without optional safety relay.

制图	彭泳涵	版号	A	标题	SG-2324	图号	SG-2324-CE-230V-A-4	比例	第 4 张
设计	彭泳涵	核准		电气元件布置图				标准	CE 共 7 张
校对				SHINI 信易电热机械股份有限公司		Shini Plastics Technologies, Inc.		机器电压	3φ230V
标记	更改前	更改后	更改人	日期	20220424			机器频率	50Hz

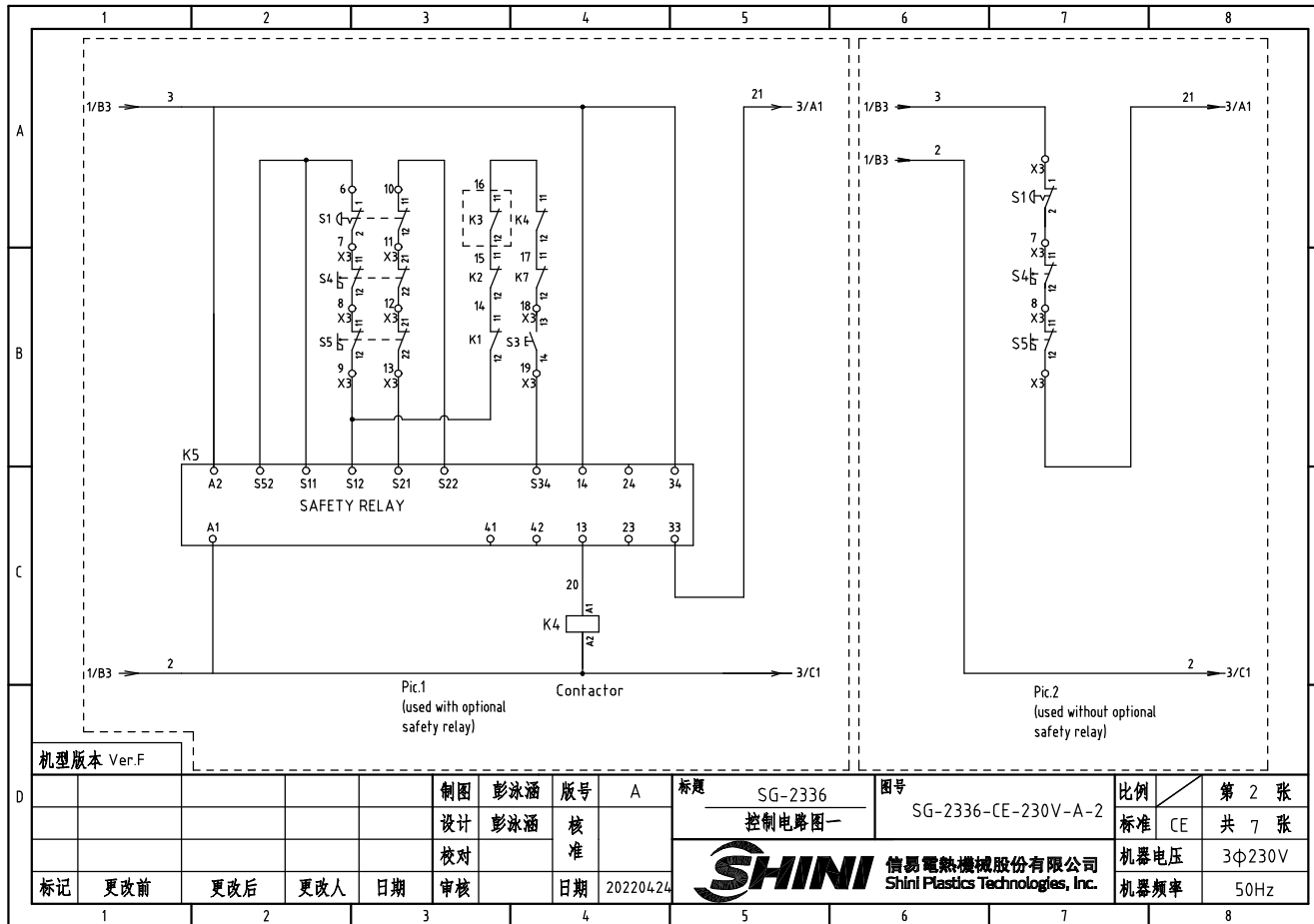
1		2		3		4		5		6		7		8	
A	NO.	Symbol	Name		Manufacturer		Type		Specification		Number	Material number		Remark	
		1	Q1	Plastics shell circuit breaker		TECO		BO100EB3050		50A		1	YE40100300100		
	2		Ext. handle		TECO		1A-CS1-C-D1		-----		1	YE90111100100			
	3	Q2	Circuit breaker		TECO		BM-63C		10A		1	YE40301003000			
	4	Q3	Circuit breaker		TECO		BM-63C		6A		1	YE40300603000		(2)	
	5	K1	Contactor		SIEMENS		3RT6027-1AC20		32A 24V 50/60Hz		1	YE00602702600			
	6	K2	Contactor		SIEMENS		3RT6015-1AB01		7A 24V 50/60Hz		1	YE00601502500			
	7		Auxiliary contact		SIEMENS		3RH6911-1HA11		1NC+1NO		1	YE00691100100			
B	8	K3	Contactor		SIEMENS		3RT6015-1AB02		7A 24V 50/60Hz		1	YE00601502600		(2)	
	9	K4	Contactor		SIEMENS		3RT6028-1AC20		38A 24V 50/60Hz		1	YE00602802600		(4)	
	10	K5	Safety relay		PILZ		PNOZx2.8P		24V AC/DC		1	YE04023000000		(4)	
	11	K7	Middle relay		Honeywell		GR-2C-AC24V		24VAC		1	YE03022400300			
	12	K7	Middle relay		Honeywell		GR-4C-AC24V		24VAC		1	YE03042400300		(4)	
	13	F1	Overload relay		SIEMENS		3RU6126-4CB0		17-22A		1	YE01260170000			
	14	F2	Overload relay		SIEMENS		3RU6116-0KB0		0.9-1.25A		1	YE01160900000		(2)	
C	15	K6	Middle relay		Honeywell		GR-2C-AC24V		24VAC		1	YE03022400300			
	16	Q4	Circuit breaker		TECO		BM-63C/2003S 2P		3A		1	YE40200203000			
	17	Q5	Circuit breaker		TECO		BM-63C/1003S 1P		3A		1	YE40100203000			
	18	T	Transformer		-----		IN=230V/200V OUT=24V		80VA		1	YE70023005200			
	19	X1	Terminal board		HONEYWELL		GK6		6mm <sup>2</sup>		3	YE60000603200			
	20				HONEYWELL		GK6PE		6mm <sup>2</sup> PE		1	YE60000603500			
	21	X2	Terminal board		HONEYWELL		GK6		6mm <sup>2</sup>		3	YE60000603200			
	22				HONEYWELL		GK6PE		6mm <sup>2</sup> PE		1	YE60000603500			
	23	X3	Terminal board		HONEYWELL		GK6		6mm <sup>2</sup>		2	YE60000603200			
D	24				HONEYWELL		SK2.5		2.5mm <sup>2</sup>		19	YE60002503200			
	25				HONEYWELL		GK2.5PE		2.5mm <sup>2</sup> PE		1	YE60002503200			
	机型版本 Ver.F		Notes:(1)Materials not in the control box;(2)Optional de-dust motor accessories;(3)Optional full mat. alarm;(4)Optional safety relay;												
					制图	彭泳涵	版号	A	标题	SG-2324	图号		比例		第 5 张
					设计	彭泳涵	核		电气元件明细表一	SG-2324-CE-230V-A-5		标准	CE	共 7 张	
					校对		准			信易電熱機械股份有限公司 Shini Plastics Technologies, Inc.		机器电压	3φ230V		
标记	更改前	更改后	更改人	日期	审核	日期	20220424	机器频率			50Hz				

1		2		3		4		5		6		7		8	
NO.	Symbol	Name		Manufacturer		Type		Specification		Number	Material number		Remark		
26				HONEYWELL		SK2.5		2.5mm <sup>2</sup>		3	YE60002503200		(2)		
27				HONEYWELL		GK2.5PE		2.5mm <sup>2</sup> PE		1	YE60002503400		(2)		
28				HONEYWELL		SK2.5		2.5mm <sup>2</sup>		4	YE60002503200		(3)		
29				HONEYWELL		SK2.5		2.5mm <sup>2</sup>		8	YE60002503200		(4)		
30		End plate		HONEYWELL		D-SK2.5		-----		1	YE60002501100				
31		End plate		HONEYWELL		D-GK6(for GK6,GK10)		-----		1	YE60001000500				
32		Terminal fittings		HONEYWELL		E/GK		-----		4	YE60000003900				
33	S1	Emergency stop button		SCHNEIDER		XB2BS542C		400VAC		1	YE11254200000		(1)		
34		Contact block		SCHNEIDER		ZB2BE102C		1NC		1	YE00210203100		(1)(4)		
35	S2	Stop button		SCHNEIDER		XB2BA22C		400VAC		1	YE11222000000		(1)		
36	S3,H1	Start button (with light)		SCHNEIDER		XB2BW33B1C		24VAC		1	YE11233100000		(1)		
37		Contact block		SCHNEIDER		ZB2BE101C		1NO		1	YE00210103100		(1)(4)		
38	S4, S5	Safety switch		SCHMERSRC		AZ15-02ZVRK-1476		AZ-15		2	YE16147600100		(1)		
39	S4, S5	Safety switch		SCHMERSRC		AZ16-02ZVRK-1476		AZ-16		2	YE16147600000		(1)(4)		
40		Operating moving parts AZ17-B6		-----		-----		AZ-17		2	YE16176000000		(1)		
41	H2	3-color alarm light		SHINI		red, gre, yel.+buzzer		24VAC		1	BL90002401520		(1)		
42	H3	Buzzer		TEND		EA-2		24VAC		1	YE84240200000		(1)(3)		
43	MS	Mat. level switch		SIPAI		SR-80		24VAC		1	YE15802400100		(1)(3)		
44	TA2	Current mutual transformer		YUYUN		-----		5-100A		1	-----		with circuit board		
45	PA	Ammeter		SFIM		DH-670		50A		1	YE25675000000		(1)		
46	X10	Metal connector		SHINI		PLT-254PM		4P		1	YE68025400000		(1)(3)		
47				SHINI		PLT-254RF		4P		1	YE68025400100		(1)(3)		
48	PCB	Microcomputer board		YUYUN		AB-02		24VAC		1	YE80022400100				
49	M1	Cutting motor		-----		7.5KW		230V 50HZ		1	-----		(1)		
50	M2	Suction blower		-----		0.55KW		230V 50HZ		1	-----		(1)		
机型版本 Ver.F		Notes:(1)Materials not in the control box;(2)Optional de-dust motor accessories;(3)Optional full mat. alarm ;(4)Optional safety relay;													
D					制图	彭泳涵	版号	A	标题	SG-2324	图号	SG-2324-CE-230V-A-6	比例	第 6 张	
					设计	彭泳涵	核		电气元件明细表二			标准	CE	共 7 张	
					校对		准		 信易電熱機械股份有限公司 Shini Plastics Technologies, Inc.			机器电压	3Φ230V		
	标记	更改前	更改后	更改人	日期	审核	日期	20220424		机器频率	50Hz				
1		2		3		4		5		6		7		8	

1		2		3		4		5		6		7		8	
NO.	Symbol	Name		Manufacturer		Type		Specification		Number	Material number		Remark		
51	M3	De-dust blower		-----		0.37KW		230V 50HZ		1	-----		(1)(2)		
A															
B															
C															
机型版本 Ver.F		Notes:(1)Materials not inthe control box;(2)Optional de-dust motor accessories;(3)Optional full maf. alarm ;(4)Optional safety relay;													
D					制图	彭泳涵	版号	A	标题	SG-2324	图号	SG-2324-CE-230V-A-7	比例	第 7 张	
					设计	彭泳涵	核			电气元件明细表二			标准	CE 共 7 张	
					校对		准		 <b>信易電熱機械股份有限公司</b> Shini Plastics Technologies, Inc.				机器电压	3Φ230V	
	标记	更改前	更改后	更改人	日期	审核	日期	20220424					机器频率	50Hz	
1		2		3		4		5		6		7		8	







机型版本 Ver.F

D	制图	彭泳涵	版号	A
	设计	彭泳涵	核	
	校对		准	
	标记	更改前	更改后	更改人
	日期	审核	日期	20220424

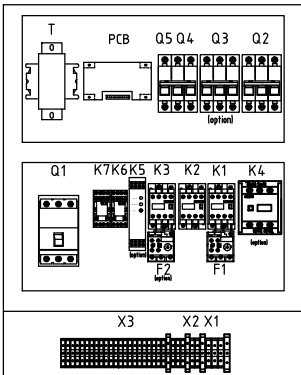
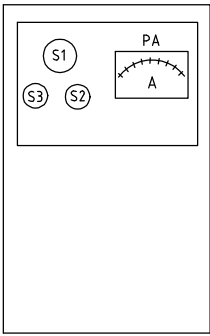
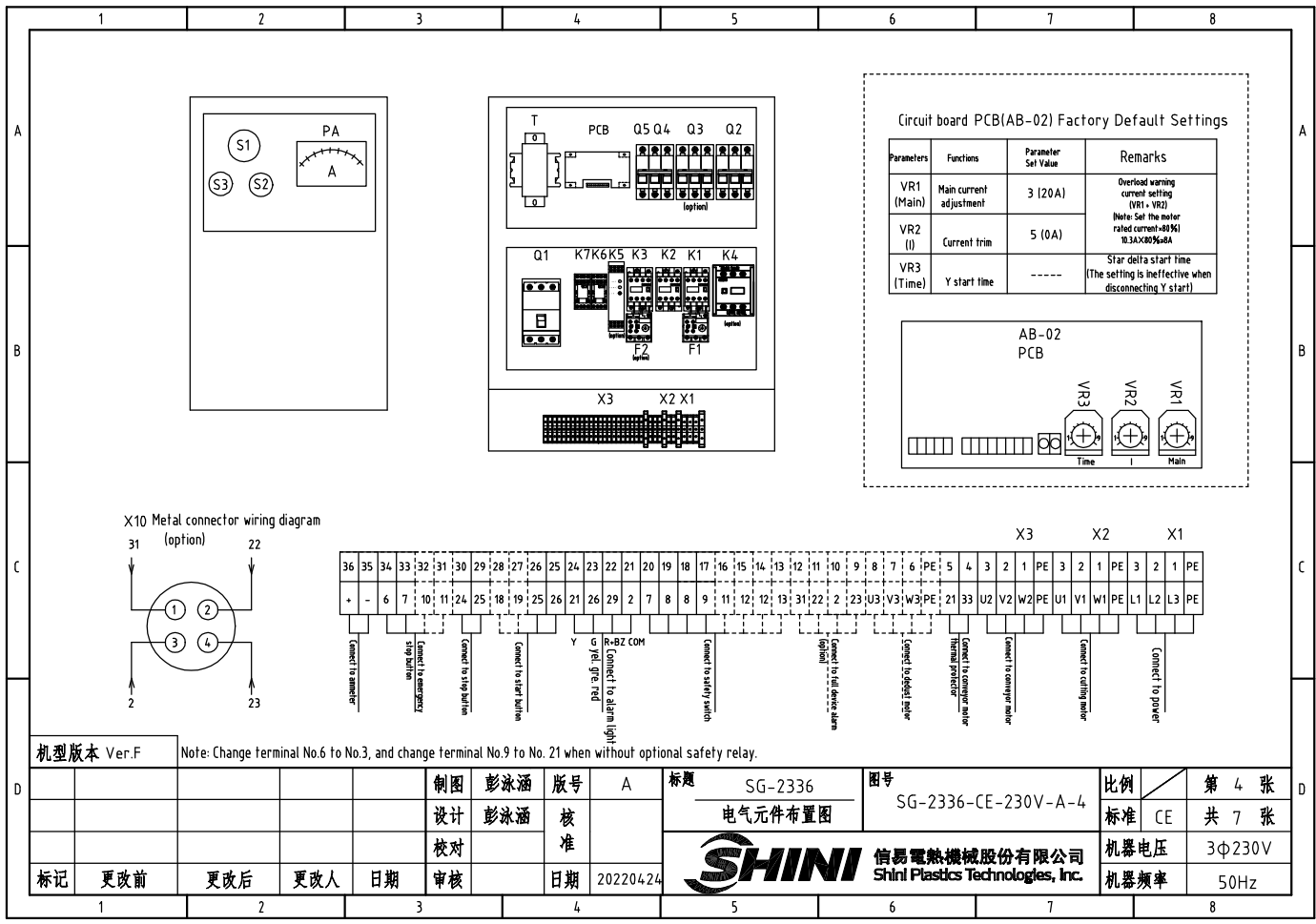
标题 SG-2336 控制电路图一  
图号 SG-2336-CE-230V-A-2

比例 第 2 张  
标准 CE 共 7 张

**SHINI** 信易电热机械股份有限公司  
Shini Plastics Technologies, Inc.

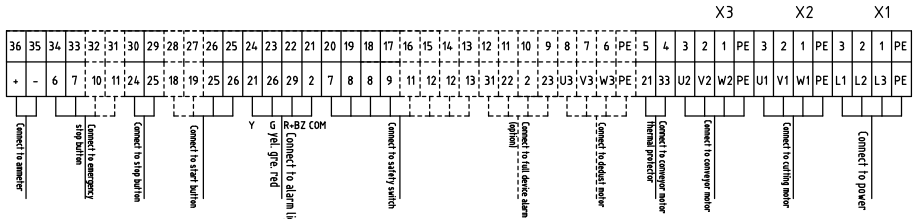
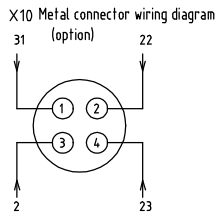
机器电压 3Φ230V  
机器频率 50Hz





Circuit board PCB(AB-02) Factory Default Settings

Parameters	Functions	Parameter Set Value	Remarks
VR1 (Main)	Main current adjustment	3 (20A)	Overload warning current setting (VR1 + VR2) Note: Set the motor rated current ±0.9% 10.3A×0.9%±0.4A
VR2 (I)	Current trim	5 (0A)	
VR3 (Time)	Y start time	-----	Star delta start time (The setting is ineffective when disconnecting Y start)

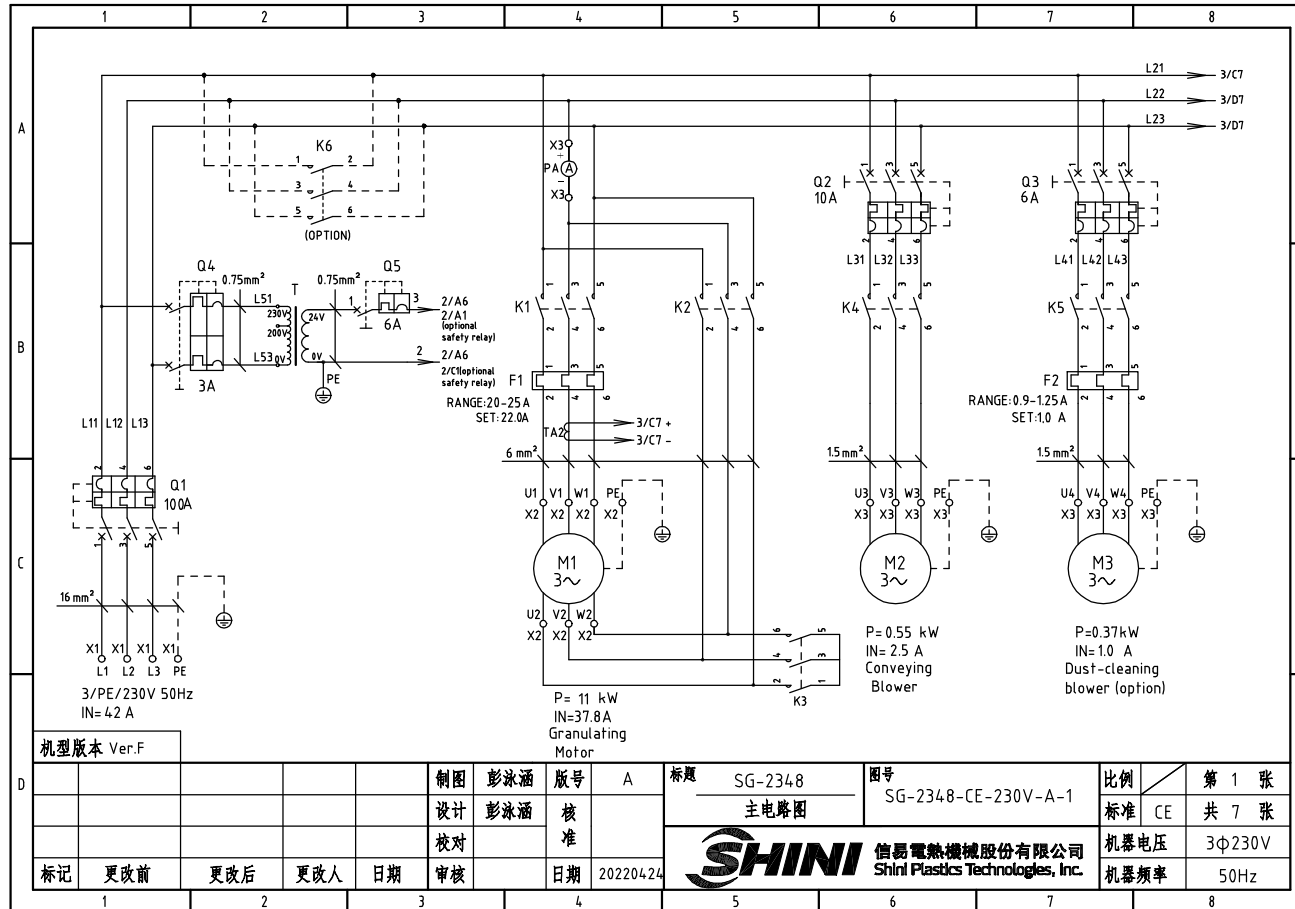


机型版本 Ver.F		Note: Change Terminal No.6 to No.3, and change Terminal No.9 to No. 21 when without optional safety relay.																			
		制图		彭泳涵		版号		A		标题		SG-2336		图号		SG-2336-CE-230V-A-4		比例		第 4 张	
		设计		彭泳涵		核 准				电气元件布置图				标准		CE		共 7 张			
		校 对												机器电压		3φ230V					
标记		更改前		更改后		更改人		日期		审核		日期		20220424		SHINI 信易电热机械股份有限公司 Shini Plastics Technologies, Inc.		机器频率		50Hz	

	1	2	3	4	5	6	7	8		
	NO.	Symbol	Name	Manufacturer	Type	Specification	Number	Material number	Remark	
A	1	Q1	Plastics shell circuit breaker	TECO	BO100EB3063	63A	1	YE40100300200		
	2		Ext. handle	TECO	1A-CS1-C-D1	-----	1	YE90111100100		
	3	Q2	Circuit breaker	TECO	BM-63C	10A	1	YE40301003000		
	4	Q3	Circuit breaker	TECO	BM-63C	6A	1	YE40300603000	(2)	
	5	K1	Contact	SIEMENS	3RT6027-1AC20	32A 24V 50/60Hz	1	YE00602702600		
	6	K2	Contact	SIEMENS	3RT6015-1AB01	7A 24V 50/60Hz	1	YE00601502500		
	7		Auxiliary contact	SIEMENS	3RH6911-1HA11	1NC+1NO	1	YE00691100100		
B	8	K3	Contact	SIEMENS	3RT6015-1AB02	7A 24V 50/60Hz	1	YE00601502600	(2)	
	9	K4	Contact	SIEMENS	3RT6028-1AC20	38A 24V 50/60Hz	1	YE00602802600	(4)	
	10	K5	Safety relay	PILZ	PNOZ×2.8P	24V AC/DC	1	YE04023000000	(4)	
	11	K7	Middle relay	Honeywell	GR-2C-AC24V	24VAC	1	YE03022400300		
	12	K7	Middle relay	Honeywell	GR-4C-AC24V	24VAC	1	YE03042400300	(4)	
	13	F1	Overload relay	SIEMENS	3RU6126-4NB0	23-28A	1	YE01612620000		
	14	F2	Overload relay	SIEMENS	3RU6116-0KB0	0.9-1.25A	1	YE01160900000	(2)	
C	15	K6	Middle relay	Honeywell	GR-2C-AC24V	24VAC	1	YE03022400300		
	16	Q4	Circuit breaker	TECO	BM-63C/2003S 2P	3A	1	YE40200203000		
	17	Q5	Circuit breaker	TECO	BM-63C/1003S 1P	3A	1	YE40100203000		
	18	T	Transformer	-----	IN=230V/200V OUT=24V	80VA	1	YE70023005200		
	19	X1	Terminal board	HONEYWELL	GK6	6mm <sup>2</sup>	3	YE60000603200		
	20			HONEYWELL	GK6PE	6mm <sup>2</sup> PE	1	YE60000603500		
	21	X2	Terminal board	HONEYWELL	GK6	6mm <sup>2</sup>	3	YE60000603200		
	22			HONEYWELL	GK6PE	6mm <sup>2</sup> PE	1	YE60000603500		
	23	X3	Terminal board	HONEYWELL	GK6	6mm <sup>2</sup>	2	YE60000603200		
D	24			HONEYWELL	SK2.5	2.5mm <sup>2</sup>	19	YE60002503200		
	25			HONEYWELL	GK2.5PE	2.5mm <sup>2</sup> PE	1	YE60002503200		
	机型版本 Ver.F		Notes:(1)Materials not in the control box;(2)Optional de-dust motor accessories;(3)Optional full mat. alarm ;(4)Optional safety relay;							
					制图 彭泳涵	版本号 A	标题 SG-2336	图号 SG-2336-CE-230V-A-5	比例	第 5 张
					设计 彭泳涵	核准	电气元件明细表一		标准 CE	共 7 张
				校对			信易電熱機械股份有限公司 Shini Plastics Technologies, Inc.	机器电压	3φ230V	
标记	更改前	更改后	更改人	日期	审核			日期	20220424	机器频率
	1	2	3	4	5	6	7	8		

1		2		3		4		5		6		7		8									
NO.	Symbol	Name		Manufacturer		Type		Specification		Number	Material number		Remark										
26				HONEYWELL		SK2.5		2.5mm <sup>2</sup>		3	YE60002503200		(2)										
27				HONEYWELL		GK2.5PE		2.5mm <sup>2</sup> PE		1	YE60002503400		(2)										
28				HONEYWELL		SK2.5		2.5mm <sup>2</sup>		4	YE60002503200		(3)										
29				HONEYWELL		SK2.5		2.5mm <sup>2</sup>		8	YE60002503200		(4)										
30		End plate		HONEYWELL		D-SK2.5		-----		1	YE60002501100												
31		End plate		HONEYWELL		D-GK6(for GK6, GK10)		-----		1	YE60001000500												
32		Terminal fittings		HONEYWELL		E/GK		-----		4	YE60000003900												
33	S1	Emergency stop button		SCHNEIDER		XB2BS542C		400VAC		1	YE11254200000		(1)										
34		Contact block		SCHNEIDER		ZB2BE102C		1NC		1	YE00210203100		(1)(4)										
35	S2	Stop button		SCHNEIDER		XB2BA22C		400VAC		1	YE11222000000		(1)										
36	S3,H1	Start button (with light)		SCHNEIDER		XB2BW33B1C		24VAC		1	YE11233100000		(1)										
37		Contact block		SCHNEIDER		ZB2BE101C		1NO		1	YE00210103100		(1)(4)										
38	S4, S5	Safety switch		SCHMERSRC		AZ15-02ZVRK-1476		AZ-15		2	YE16147600100		(1)										
39	S4, S5	Safety switch		SCHMERSRC		AZ16-02ZVRK-1476		AZ-16		2	YE16147600000		(1)(4)										
40		Operating moving parts AZ17-B6		-----		-----		AZ-17		2	YE16176000000		(1)										
41	H2	3-color alarm light		SHINI		red, gre, yel.+buzzer		24VAC		1	BL90002401520		(1)										
42	H3	Buzzer		TEND		EA-2		24VAC		1	YE84240200000		(1)(3)										
43	MS	Mat. level switch		SIPAI		SR-80		24VAC		1	YE15802400100		(1)(3)										
44	TA2	Current mutual transformer		YUYUN		-----		5-100A		1	-----		with circuit board										
45	PA	Ammeter		SFIM		DH-670		50A		1	YE25675000000		(1)										
46	X10	Metal connector		SHINI		PLT-254PM		4P		1	YE68025400000		(1)(3)										
47				SHINI		PLT-254RF		4P		1	YE68025400100		(1)(3)										
48	PCB	Microcomputer board		YUYUN		AB-02		24VAC		1	YE80022400100												
49	M1	Cutting motor		-----		7.5KW		230V 50HZ		1	-----		(1)										
50	M2	Suction blower		-----		0.55KW		230V 50HZ		1	-----		(1)										
机型版本		Ver.F		Notes:(1)Materials not in the control box;(2)Optional de-dust motor accessories;(3)Optional full mat. alarm ;(4)Optional safety relay;																			
				制图		彭泳涵		版号		A		标题		SG-2336		图号		SG-2336-CE-230V-A-6		比例		第 6 张	
				设计		彭泳涵		核				电气元件明细表二				标准		CE		共 7 张			
				校对				准								机器电压		3φ230V					
标记		更改前		更改后		更改人		日期		审核		日期		20220424		SHINI 信易電熱機械股份有限公司		Shini Plastics Technologies, Inc.		机器频率		50Hz	
1		2		3		4		5		6		7		8									

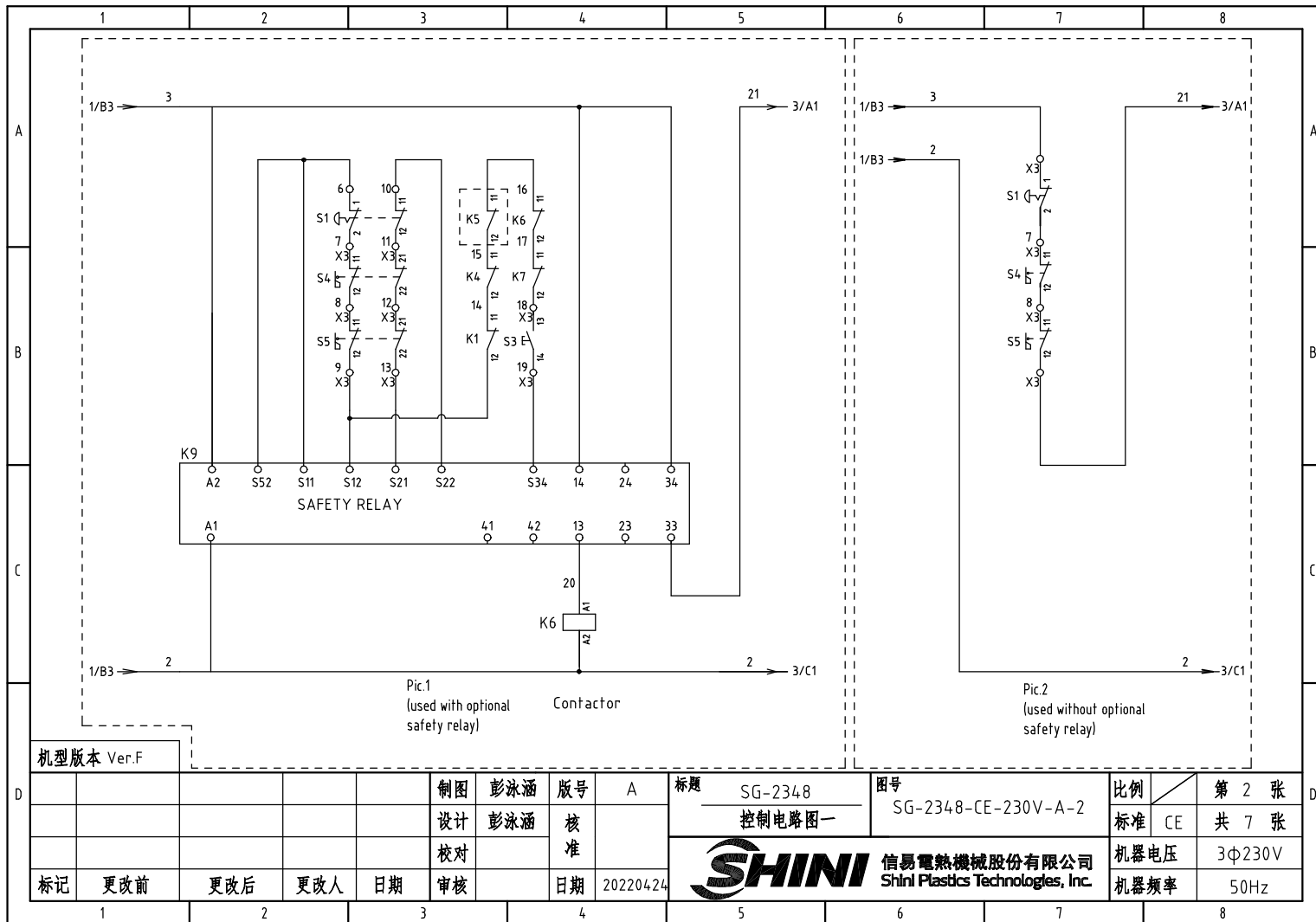
1		2		3		4		5		6		7		8			
NO.		Symbol		Name		Manufacturer		Type		Specification		Number		Material number		Remark	
51		M3		De-dust blower		-----		0.37KW		230V 50HZ		1		-----		(1)(2)	
A																A	
B																B	
C																C	
D		机型号 Ver.F		Notes:(1)Materials not inthe control box;(2)Optional de-dust motor accessories;(3)Optional full mat. alarm ;(4)Optional safety relay;													
				制图 彭泳涵		版号 A		标题 SG-2336				图号		比例		第 7 张	
				设计 彭泳涵		核		电气元件明细表二				SG-2336-CE-230V-A-7		标准 CE		共 7 张	
				校对		准		 <b>信易電熱機械股份有限公司</b> <b>Shini Plastics Technologies, Inc.</b>				机器电压		3Φ230V			
标记 更改前		更改后		更改人		日期						20220424		机器频率		50Hz	
1		2		3		4		5		6		7		8			



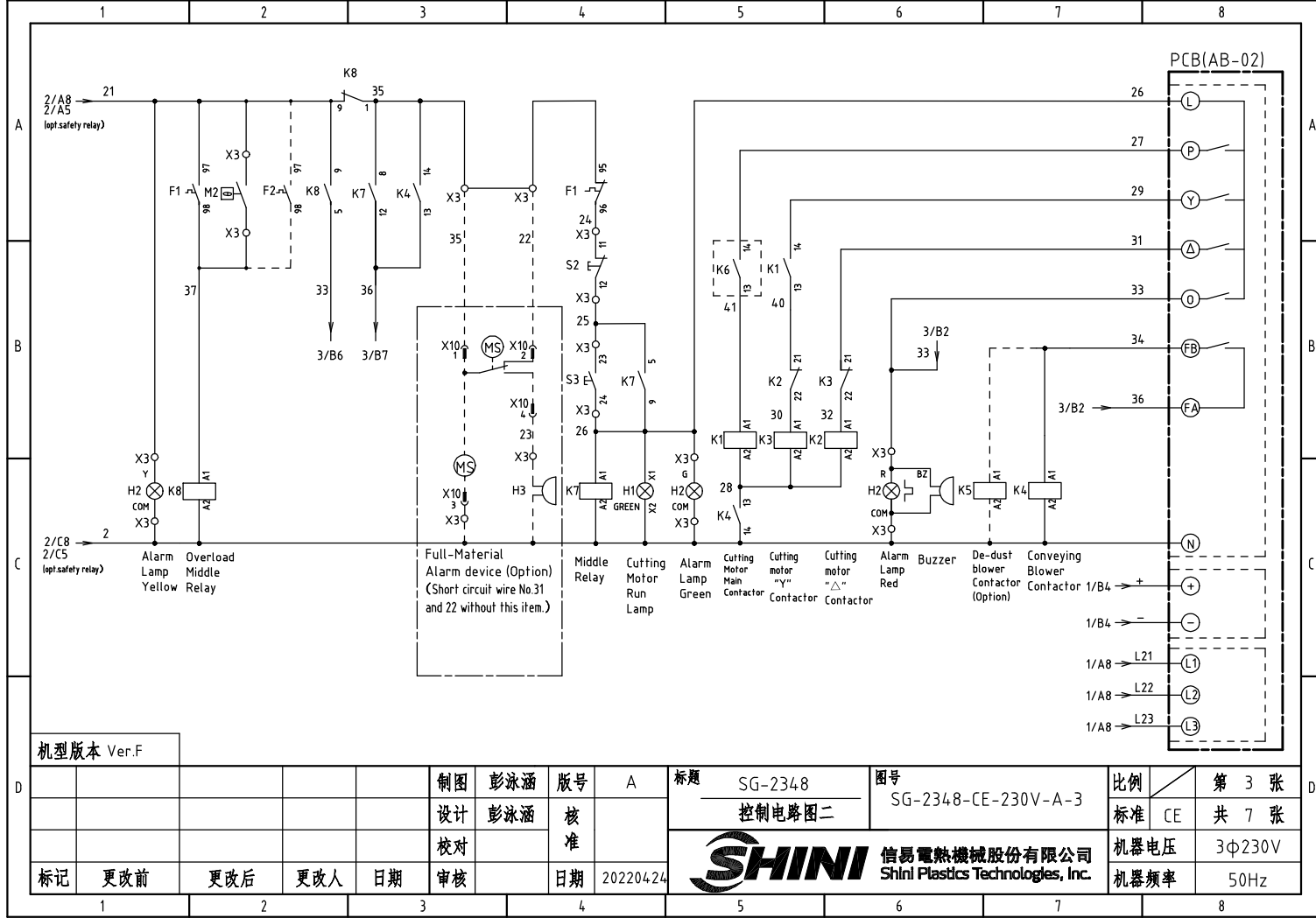
机型版本 Ver.F

				制图	彭泳涵	版号	A	标题	SG-2348	图号	SG-2348-CE-230V-A-1	比例	第 1 张
				设计	彭泳涵	核		主电路图				标准	CE 共 7 张
				校对		准						机器电压	3φ230V
				审核		日期	20220424					机器频率	50Hz







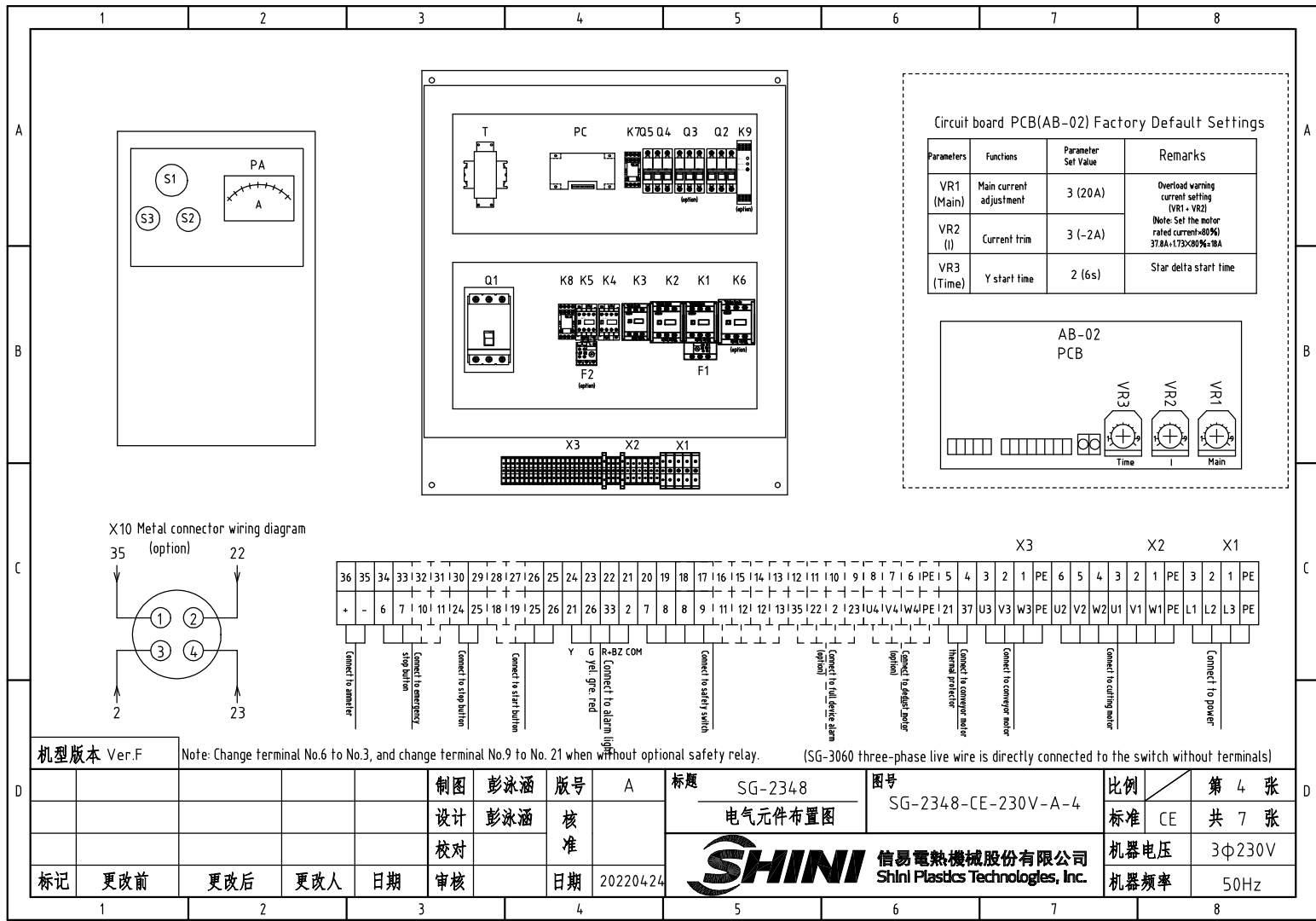


机型版本 Ver.F

制图	彭泳涵	版号	A	标题	SG-2348	图号	SG-2348-CE-230V-A-3	比例	第 3 张
设计	彭泳涵	核准		控制电路图二				标准	共 7 张
校对		核准						机器电压	3Φ230V
标记	更改前	更改后	更改人	日期	审核	日期	20220424	机器频率	50Hz

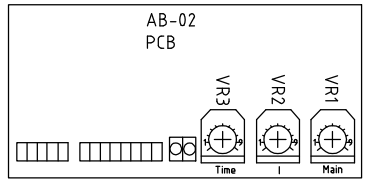


比例	第 3 张
标准	共 7 张
机器电压	3Φ230V
机器频率	50Hz

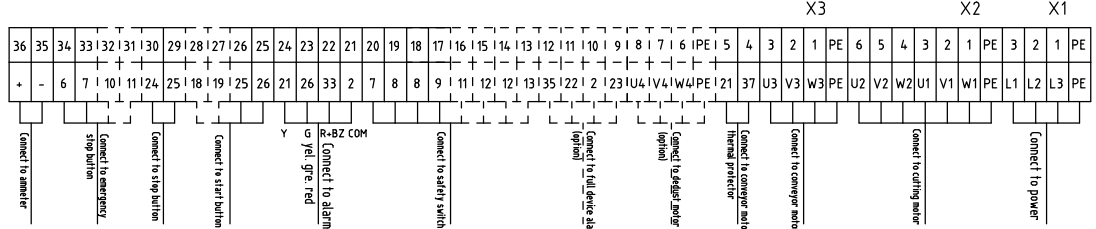
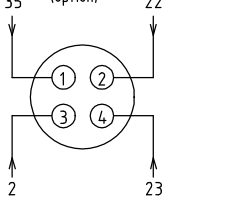


Circuit board PCB(AB-02) Factory Default Settings

Parameters	Functions	Parameter Set Value	Remarks
VR1 (Main)	Main current adjustment	3 (20A)	Overload warning current setting (VR1 + VR2) Note: Set the motor rated current=80% 37.6A+1.73×80%×18A
VR2 (I)	Current trim	3 (-2A)	
VR3 (Time)	Y start time	2 (6s)	Star delta start time



X10 Metal connector wiring diagram (option)



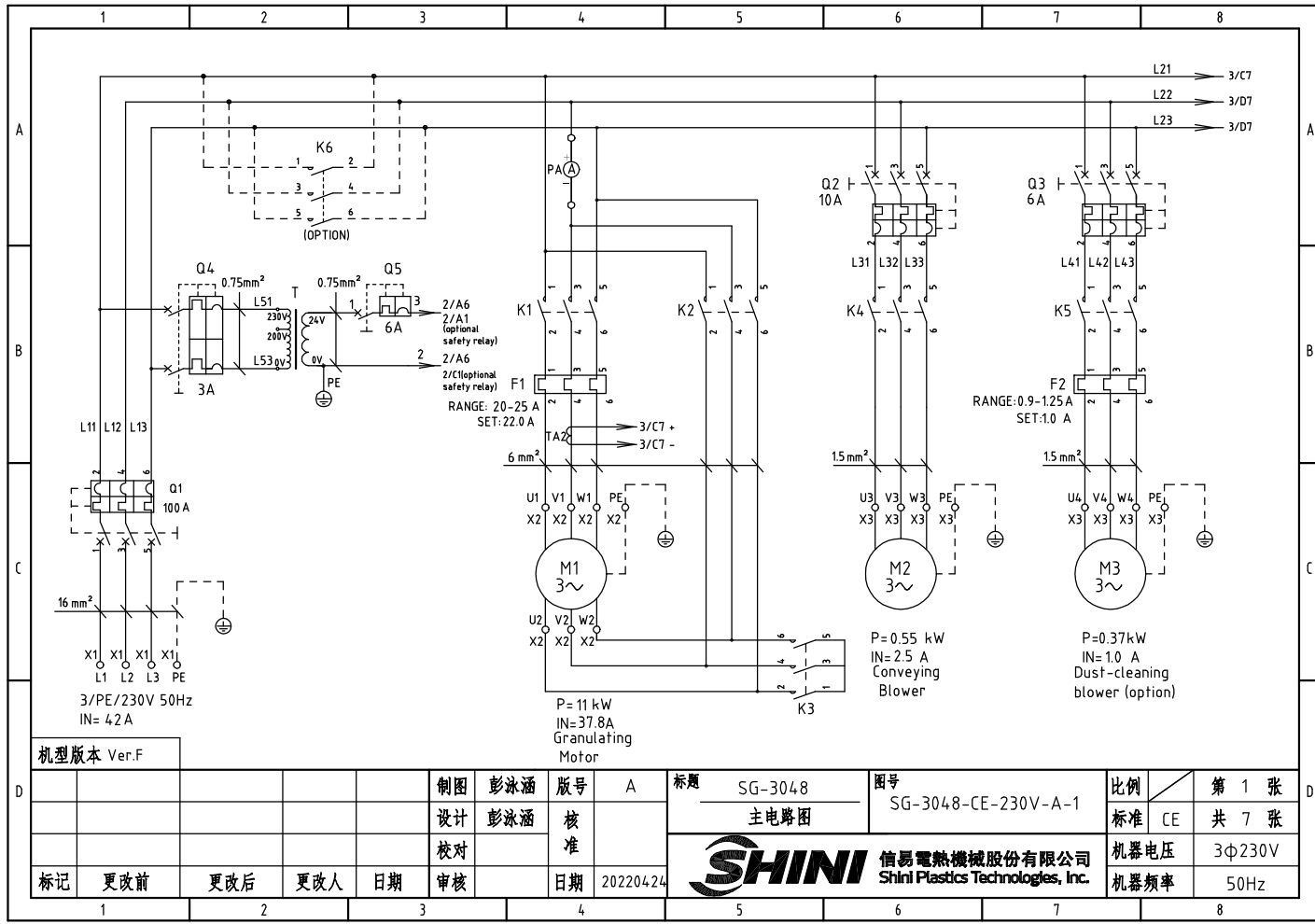
机型号版本 Ver.F Note: Change terminal No.6 to No.3, and change terminal No.9 to No. 21 when without optional safety relay. (SG-3060 three-phase live wire is directly connected to the switch without terminals)

制图 彭泳涵 版号 A					标题 SG-2348 电气元件布置图		图号 SG-2348-CE-230V-A-4		比例 第 4 张	
设计 彭泳涵 核准					SHINI 信易電熱機械股份有限公司 Shini Plastics Technologies, Inc.		标准 CE		共 7 张	
校对 审核							机器电压 3Φ230V		机器频率 50Hz	
标记	更改前	更改后	更改人	日期	日期	20220424				

1		2		3		4		5		6		7		8	
NO.	Symbol	Name		Manufacturer	Type		Specification		Number	Material number		Remark			
1	Q1	Plastics shell circuit breaker		TECO	BO100EB3100		100A		1	YE40100300400					
2		Ext. handle		TECO	1A-CS1-C-D1		-----		1	YE90111100100					
3	Q2	Circuit breaker		TECO	BM-63C		10A		1	YE40301003000					
4	Q3	Circuit breaker		TECO	BM-63C		6A		1	YE40300603000		(2)			
5	K1	Contactor		SIEMENS	3RT6027-1AC20		32A 24V 50/60Hz		1	YE00602702600					
6	K2	Contactor		SIEMENS	3RT6027-1AC20		32A 24V 50/60Hz		1	YE00602702600					
7	K3	Auxiliary contact		SIEMENS	3RT6026-1AC20		25A 24V 50/60Hz		1	YE00602602600					
8	K4	Contactor		SIEMENS	3RT6015-1AB01		7A 24V 50/60Hz		1	YE00601502500					
9		Contactor		SIEMENS	3RH6911-1HA11		1NC+1NO		1	YE00691100100					
10	K5	Contactor		SIEMENS	3RT6015-1AB02		7A 24V 50/60Hz		1	YE00601502600		(2)			
11	K6	Contactor		SIEMENS	3RT5036-1AC20		50A 24V 50/60Hz		1	YE00503602600		(4)			
12		Auxiliary contact		SIEMENS	3RH5921-1CA01		1NC		1	YE00592110100		(4)			
13		Auxiliary contact		SIEMENS	3RH5921-1CA10		1NO		1	YE00592110000		(4)			
14	K7	Middle relay		Honeywell	GR-2C-AC24V		24VAC		1	YE03022400300					
15	K7	Middle relay		Honeywell	GR-4C-AC24V		24VAC		1	YE03042400300		(4)			
16	K9	Safety relay		PILZ	PNOZ×2.8P		24V AC/DC		1	YE04023000000		(4)			
17	F1	Overload relay		SIEMENS	3RU6126-4DB0		20-25A		1	YE01260200000					
18	F2	Overload relay		SIEMENS	3RU6116-0KB0		0.9-1.25A		1	YE01160900000		(2)			
19	K8	Middle relay		Honeywell	GR-2C-AC24V		24VAC		1	YE03022400300					
20	Q4	Circuit breaker		TECO	BM-63C/2003S 2P		3A		1	YE40200203000					
21	Q5	Circuit breaker		TECO	BM-63C/1006S 1P		6A		1	YE40100600100					
22	T	Transformer		-----	IN=230/200V OUT=24VAC		120VA		1	YE70023004500					
23	T	Transformer		-----	IN=230/200V OUT=24VAC		180VA		1	YE70023005400		(4)			
24	X1	Terminal board		HONEYWELL	GK16		16mm <sup>2</sup>		3	YE60001603200					
25				HONEYWELL	GK16PE		16mm <sup>2</sup> PE		1	YE60001603500					
机型版本 Ver.F		Notes:(1)Materials not in the control box;(2)Optional de-dust motor accessories;(3)Optional full mat. alarm;(4)Optional safety relay;													
D					制图	彭泳涵	版本号	A	标题	SG-2348	图号	SG-2348-CE-230V-A-5	比例	第 5 张	
					设计	彭泳涵	核		电气元件明细表一			标准	CE	共 7 张	
					校对		准		 信易電熱機械股份有限公司 Shini Plastics Technologies, Inc.			机器电压	3φ230V		
	标记	更改前	更改后	更改人	日期	审核	日期	20220424		机器频率	50Hz				
1		2		3		4		5		6		7		8	

1		2		3		4		5		6		7		8		
NO.	Symbol	Name		Manufacturer	Type	Specification		Number	Material number		Remark					
A	26	X2	Terminal board		HONEYWELL	GK6	6mm <sup>2</sup>		6	YE60000603200						
	27				HONEYWELL	GK6PE	6mm <sup>2</sup> PE		1	YE60000603500						
	28	X3	Terminal board		HONEYWELL	GK10	10mm <sup>2</sup>		2	YE60001003200						
	29				HONEYWELL	SK2.5	2.5mm <sup>2</sup>		19	YE60002503200						
	30				HONEYWELL	GK2.5PE	2.5mm <sup>2</sup> PE		1	YE60002503400						
	31				HONEYWELL	SK2.5	2.5mm <sup>2</sup>		3	YE60002503200		(2)				
	32				HONEYWELL	GK2.5PE	2.5mm <sup>2</sup> PE		1	YE60002503400		(2)				
B	33				HONEYWELL	SK2.5	2.5mm <sup>2</sup>		4	YE60002503200		(3)				
	34				HONEYWELL	SK2.5	2.5mm <sup>2</sup>		8	YE60002503200		(4)				
	35		End plate		HONEYWELL	D-SK2.5	-----		1	YE60002501100						
	36		End plate		HONEYWELL	D-GK6(for GK6, GK10)	-----		2	YE60001000500						
	37		End plate		HONEYWELL	GK16	-----		1	YE60001600400						
	38		Terminal fittings		HONEYWELL	E/GK	-----		4	YE60000003900						
	39	S1	Emergency stop button		SCHNEIDER	XB2BS542C	400VAC		1	YE11254200000		(1)				
40		Contact block		SCHNEIDER	ZB2BE102C	1NC		1	YE00210203100		(1)(4)					
C	41	S2	Stop button		SCHNEIDER	XB2BA22C	400VAC		1	YE11222000000		(1)				
	42	S3,H1	Start button (with light)		SCHNEIDER	XB2BW33B1C	24VAC		1	YE11233100000		(1)				
	43		Contact block		SCHNEIDER	ZB2BE101C	1NO		1	YE00210103100		(1)(4)				
	44	S4, S5	Safety switch		SCHMERSRC	AZ15-02ZVRK-1476	AZ-15		2	YE16147600100		(1)				
	45	S4, S5	Safety switch		SCHMERSRC	AZ16-02ZVRK-1476	AZ-16		2	YE16147600000		(1)(4)				
	46		Operating moving parts AZ17-B6		-----	-----	AZ-17		2	YE16176000000		(1)				
	47	H2	3-color alarm light		SHINI	red, gre, yel.+buzzer	24VAC		1	BL90002401520		(1)				
48	H3	Buzzer		TEND	EA-2	24VAC		1	YE84240200000		(1)(3)					
49	MS	Mat. level switch		SIPAI	SR-80	24VAC		1	YE15802400100		(1)(3)					
50	TA2	Current mutual transformer		YUYUN	-----	5-100A		1	-----		with circuit board					
机型版本 Ver.F		Notes:(1)Materials not in the control box;(2)Optional de-dust motor accessories;(3)Optional full mat. alarm ;(4)Optional safety relay;														
D					制图 彭泳涵		版号 A		标题 SG-2348		图号 SG-2348-CE-230V-A-6		比例		第 6 张	
					设计 彭泳涵		核 准		电气元件明细表二				标准 CE		共 7 张	
					校对						信易電熱機械股份有限公司 Shini Plastics Technologies, Inc.		机器电压		3φ230V	
	标记 更改前		更改后		更改人		日期		审核		日期 20220424		机器频率		50Hz	
1		2		3		4		5		6		7		8		



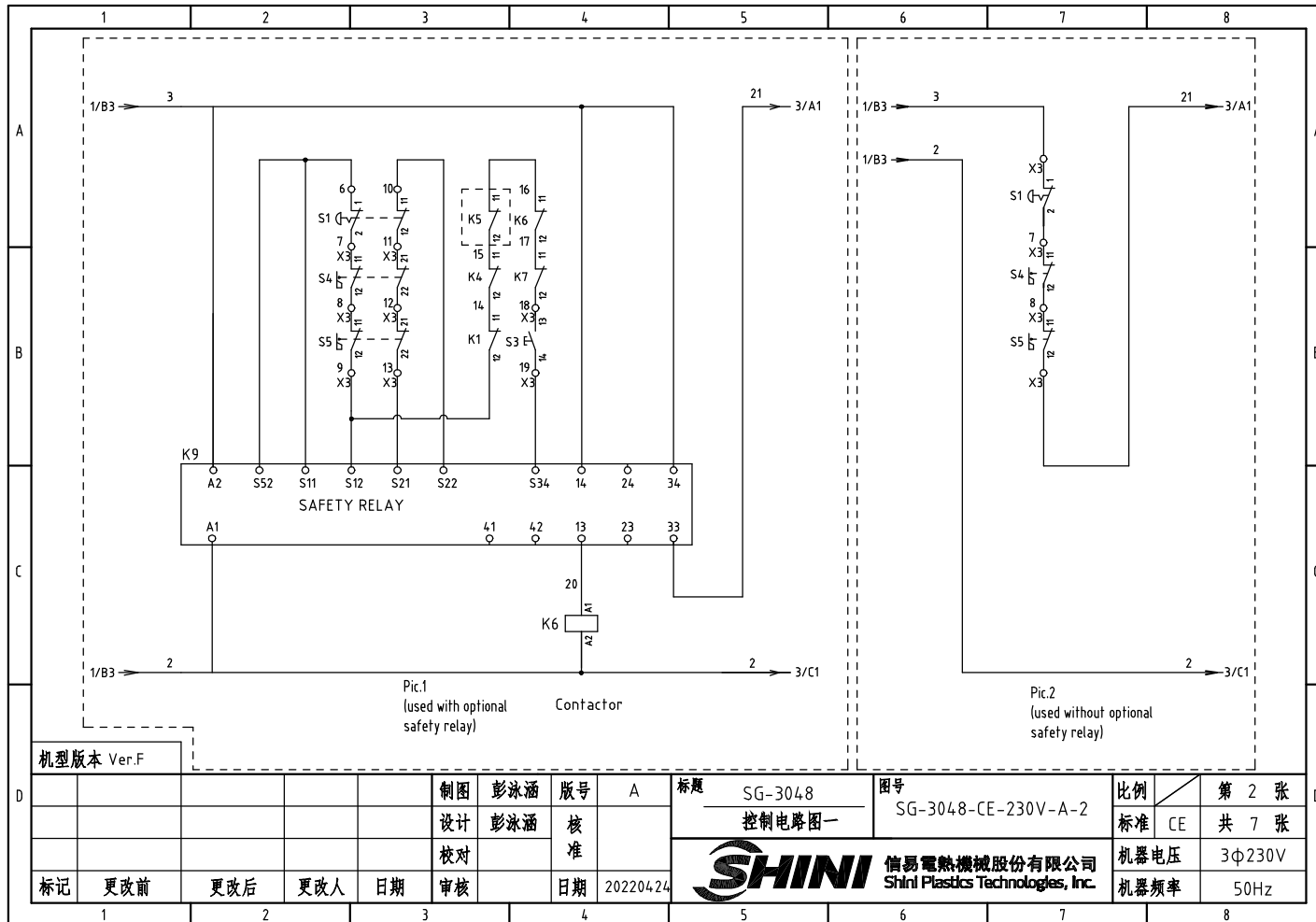


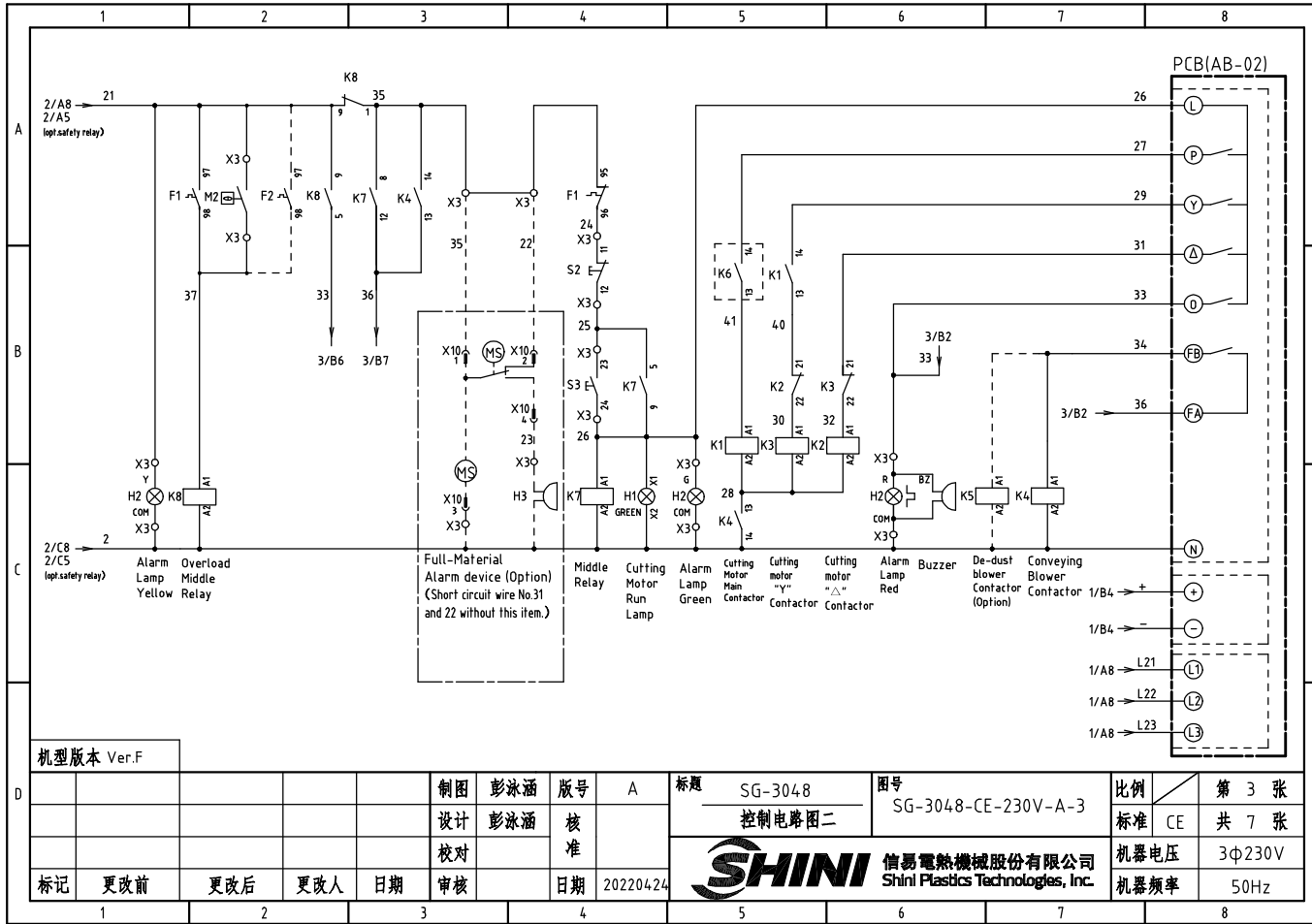
机型版本 Ver.F

				制图	彭泳涵	版号	A
				设计	彭泳涵	核准	
				校对		核准	
标记	更改前	更改后	更改人	日期	审核	日期	20220424

标题	SG-3048	图号	SG-3048-CE-230V-A-1
主电路图			
		信易電熱機械股份有限公司 Shini Plastics Technologies, Inc.	

比例	第 1 张
标准	CE 共 7 张
机器电压	3φ230V
机器频率	50Hz



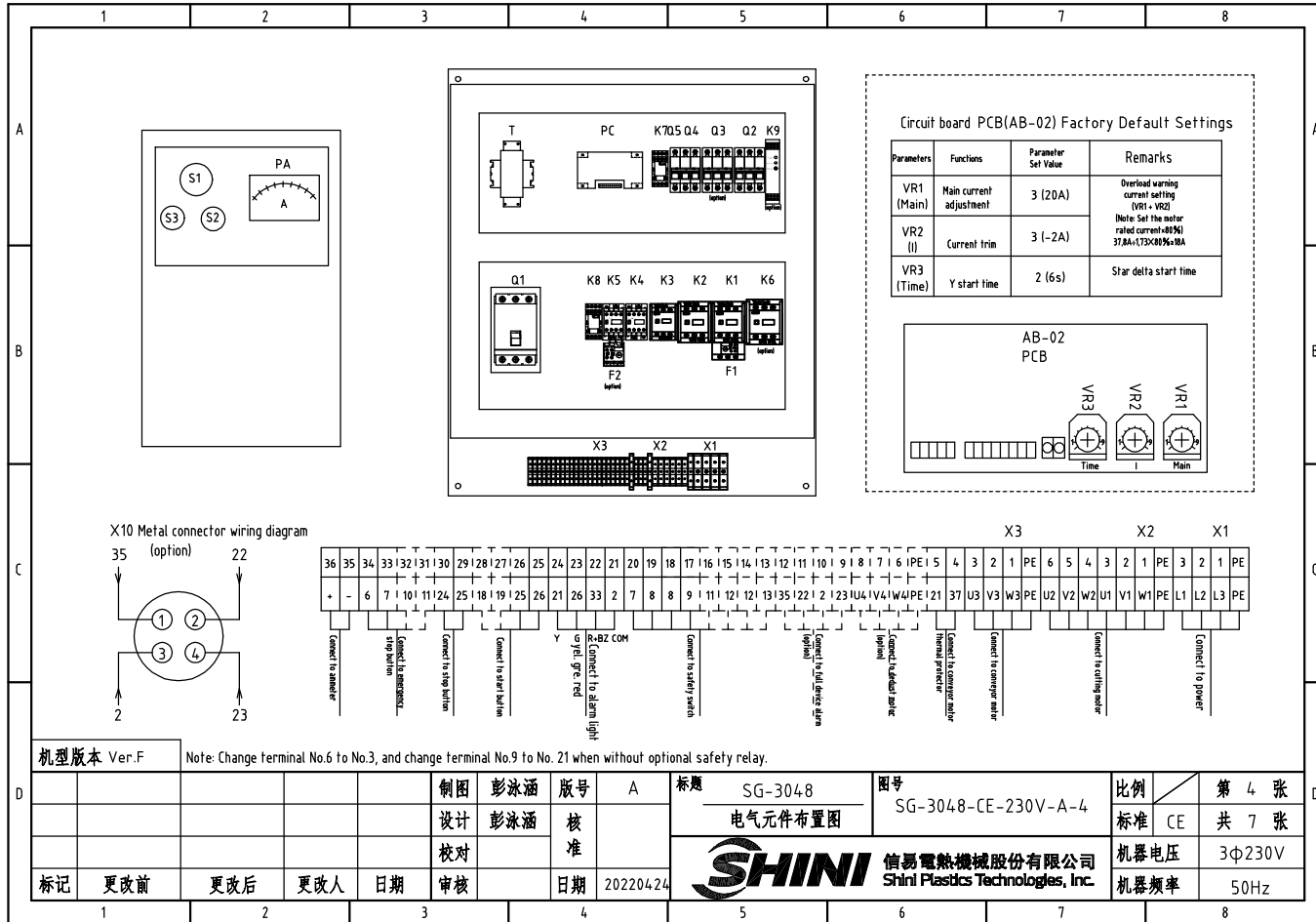


机型版本 Ver.F

制图	彭泳涵	版号	A
设计	彭泳涵	核准	
校对		核准	
标记	更改前	更改后	更改人
		日期	20220424

标题	SG-3048 控制电路图二	图号	SG-3048-CE-230V-A-3
信易電熱機械股份有限公司 Shini Plastics Technologies, Inc.		比例	第 3 张
		标准	CE 共 7 张
		机器电压	3Φ230V
		机器频率	50Hz





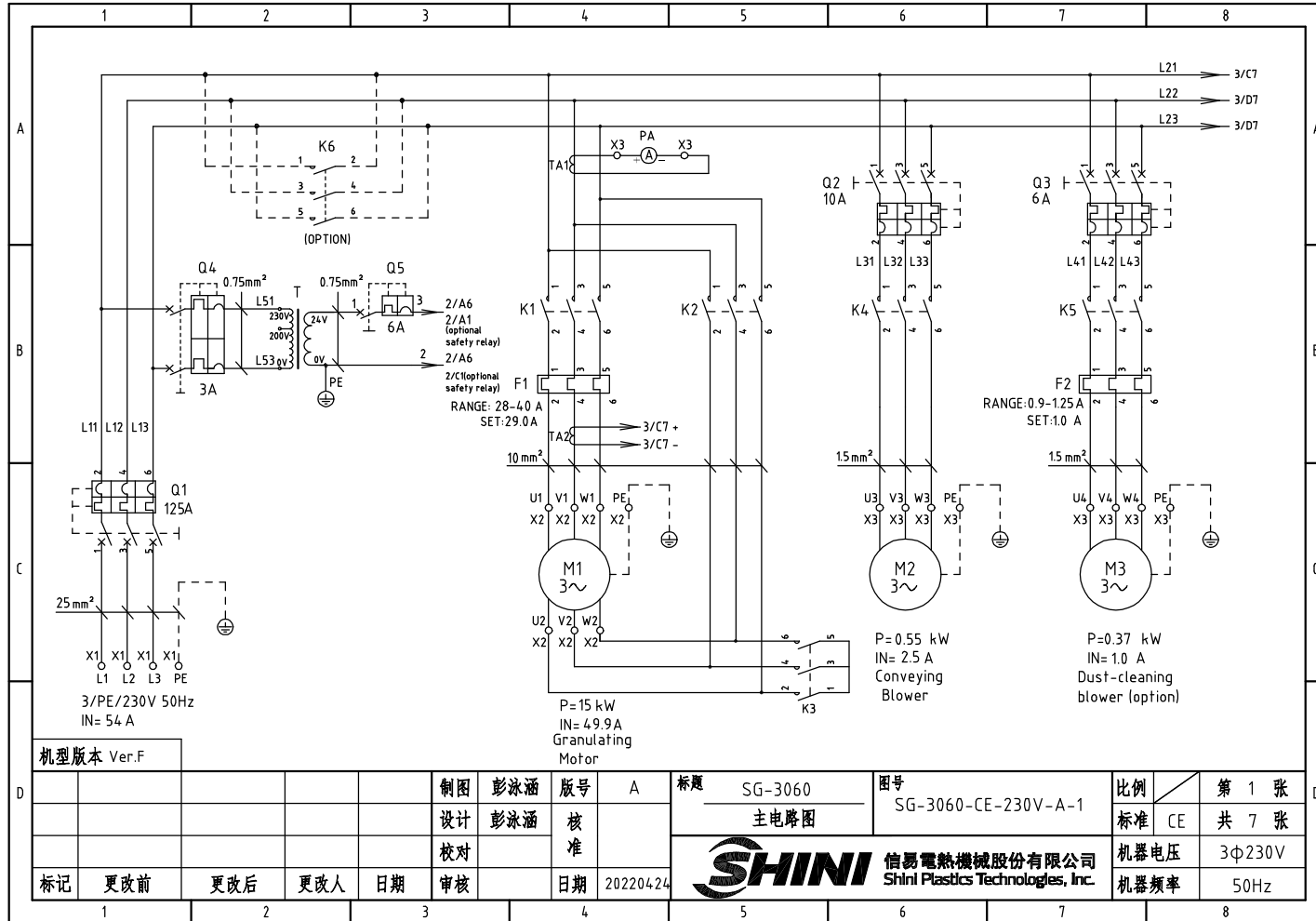
机型版本 Ver.F Note: Change terminal No.6 to No.3, and change terminal No.9 to No. 21 when without optional safety relay.

制图 彭泳涵				版号 A				标题 SG-3048				图号 SG-3048-CE-230V-A-4				比例 第 4 张	
设计 彭泳涵				核准				电气元件布置图				SG-3048-CE-230V-A-4				标准 CE 共 7 张	
校对				日期				SHINI 信易電熱機械股份有限公司 Shini Plastics Technologies, Inc.				机器电压 3φ230V				机器频率 50Hz	
标记 更改前		更改后		更改人		日期 20220424											

1		2		3		4		5		6		7		8	
NO.	Symbol	Name	Manufacturer	Type	Specification	Number	Material number	Remark							
A	1	Q1	Plastics shell circuit breaker	TECO	B0100EB3100	100A	1	YE40100300400							
	2		Ext. handle	TECO	1A-CS1-C-D1	-----	1	YE90111100100							
	3	Q2	Circuit breaker	TECO	BM-63C	10A	1	YE40301003000							
	4	Q3	Circuit breaker	TECO	BM-63C	6A	1	YE40300603000	(2)						
	5	K1	Contact	SIEMENS	3RT6027-1AC20	32A 24V 50/60Hz	1	YE00602702600							
	6	K2	Contact	SIEMENS	3RT6027-1AC20	32A 24V 50/60Hz	1	YE00602702600							
	7	K3	Contact	SIEMENS	3RT6026-1AC20	25A 24V 50/60Hz	1	YE00602602600							
B	8	K4	Contact	SIEMENS	3RT6015-1AB01	7A 24V 50/60Hz	1	YE00601502500							
	9		Auxiliary contact	SIEMENS	3RH6911-1HA11	1NC+1NO	1	YE00691100100							
	10	K5	Contact	SIEMENS	3RT6015-1AB02	7A 24V 50/60Hz	1	YE00601502600	(2)						
	11	K6	Contact	SIEMENS	3RT5036-1AC20	50A 24V 50/60Hz	1	YE00503602600	(4)						
	12		Auxiliary contact	SIEMENS	3RH5921-1CA01	1NC	1	YE005921100100	(4)						
	13		Auxiliary contact	SIEMENS	3RH5921-1CA10	1NO	1	YE005921100000	(4)						
	14	K7	Middle relay	Honeywell	GR-2C-AC24V	24VAC	1	YE03022400300							
15	K7	Middle relay	Honeywell	GR-4C-AC24V	24VAC	1	YE03042400300	(4)							
C	16	K9	Safety relay	PILZ	PN0Z×2.8P	24V AC/DC	1	YE04023000000	(4)						
	17	F1	Overload relay	SIEMENS	3RU6126-4DB0	20-25A	1	YE01260200000							
	18	F2	Overload relay	SIEMENS	3RU6116-0KB0	0.9-1.25A	1	YE01160900000	(2)						
	19	K8	Middle relay	Honeywell	GR-2C-AC24V	24VAC	1	YE03022400300							
	20	Q4	Circuit breaker	TECO	BM-63C/2003S 2P	3A	1	YE40200203000							
	21	Q5	Circuit breaker	TECO	BM-63C/1006S 1P	6A	1	YE40100600100							
	22	T	Transformer	-----	IN=230/200V OUT=24VAC	120VA	1	YE70023004500							
23	T	Transformer	-----	IN=230/200V OUT=24VAC	180VA	1	YE70023005400	(4)							
D	24	X1	Terminal board	HONEYWELL	GK16	16mm <sup>2</sup>	3	YE60001603200							
	25			HONEYWELL	GK16PE	16mm <sup>2</sup> PE	1	YE60001603500							
机型版本 Ver.F		Notes:(1)Materials not in the control box;(2)Optional de-dust motor accessories;(3)Optional full mat. alarm ;(4)Optional safety relay;													
				制图 彭泳涵		版本号 A		标题 SG-3048		图号 SG-3048-CE-230V-A-5		比例		第 5 张	
				设计 彭泳涵		核准		电气元件明细表一				标准 CE		共 7 张	
				校对		审核		 信易電熱機械股份有限公司 Shini Plastics Technologies, Inc.		机器电压		3φ230V			
标记 更改前		更改后		更改人		日期 20220424				机器频率		50Hz			
1		2		3		4		5		6		7		8	

1		2		3		4		5		6		7		8	
NO.	Symbol	Name		Manufacturer	Type		Specification		Number	Material number		Remark			
26	X2	Terminal board		HONEYWELL	GK6		6mm <sup>2</sup>		6	YE60000603200					
27				HONEYWELL	GK6PE		6mm <sup>2</sup> PE		1	YE60000603500					
28	X3	Terminal board		HONEYWELL	GK10		10mm <sup>2</sup>		2	YE60001003200					
29				HONEYWELL	SK2.5		2.5mm <sup>2</sup>		19	YE60002503200					
30				HONEYWELL	GK2.5PE		2.5mm <sup>2</sup> PE		1	YE60002503400					
31				HONEYWELL	SK2.5		2.5mm <sup>2</sup>		3	YE60002503200		(2)			
32				HONEYWELL	GK2.5PE		2.5mm <sup>2</sup> PE		1	YE60002503400		(2)			
33				HONEYWELL	SK2.5		2.5mm <sup>2</sup>		4	YE60002503200		(3)			
34				HONEYWELL	SK2.5		2.5mm <sup>2</sup>		8	YE60002503200		(4)			
35		End plate		HONEYWELL	D-SK2.5		-----		1	YE60002501100					
36		End plate		HONEYWELL	D-GK6(for GK6, GK10)		-----		2	YE60001000500					
37		End plate		HONEYWELL	GK16		-----		1	YE60001600400					
38		Terminal fittings		HONEYWELL	E/GK		-----		4	YE60000003900					
39	S1	Emergency stop button		SCHNEIDER	XB2BS542C		400VAC		1	YE11254200000		(1)			
40		Contact block		SCHNEIDER	ZB2BE102C		1NC		1	YE00210203100		(1)(4)			
41	S2	Stop button		SCHNEIDER	XB2BA22C		400VAC		1	YE11222000000		(1)			
42	S3,H1	Start button (with light)		SCHNEIDER	XB2BW33B1C		24VAC		1	YE11233100000		(1)			
43		Contact block		SCHNEIDER	ZB2BE101C		1NO		1	YE00210103100		(1)(4)			
44	S4, S5	Safety switch		SCHMERSRC	AZ15-02ZVRK-1476		AZ-15		2	YE16147600100		(1)			
45	S4, S5	Safety switch		SCHMERSRC	AZ16-02ZVRK-1476		AZ-16		2	YE16147600000		(1)(4)			
46		Operating moving parts AZ17-B6		-----	-----		AZ-17		2	YE16176000000		(1)			
47	H2	3-color alarm light		SHINI	red, gre, yel.+buzzer		24VAC		1	BL90002401520		(1)			
48	H3	Buzzer		TEND	EA-2		24VAC		1	YE84240200000		(1)(3)			
49	MS	Mat. level switch		SIPAI	SR-80		24VAC		1	YE15802400100		(1)(3)			
50	TA2	Current mutual transformer		YUYUN	-----		5-100A		1	-----		with circuit board			
机型版本 Ver.F		Notes:(1)Materials not in the control box;(2)Optional de-dust motor accessories;(3)Optional full mat. alarm ;(4)Optional safety relay;													
D					制图	彭泳涵	版号	A	标题	SG-3048	图号	SG-3048-CE-230V-A-6	比例	第 6 张	
					设计	彭泳涵	核		电气元件明细表二			标准	CE	共 7 张	
					校对		准			信易電熱機械股份有限公司 Shini Plastics Technologies, Inc.		机器电压	3φ230V		
	标记	更改前	更改后	更改人	日期	审核		日期	20220424				机器频率	50Hz	
1		2		3		4		5		6		7		8	

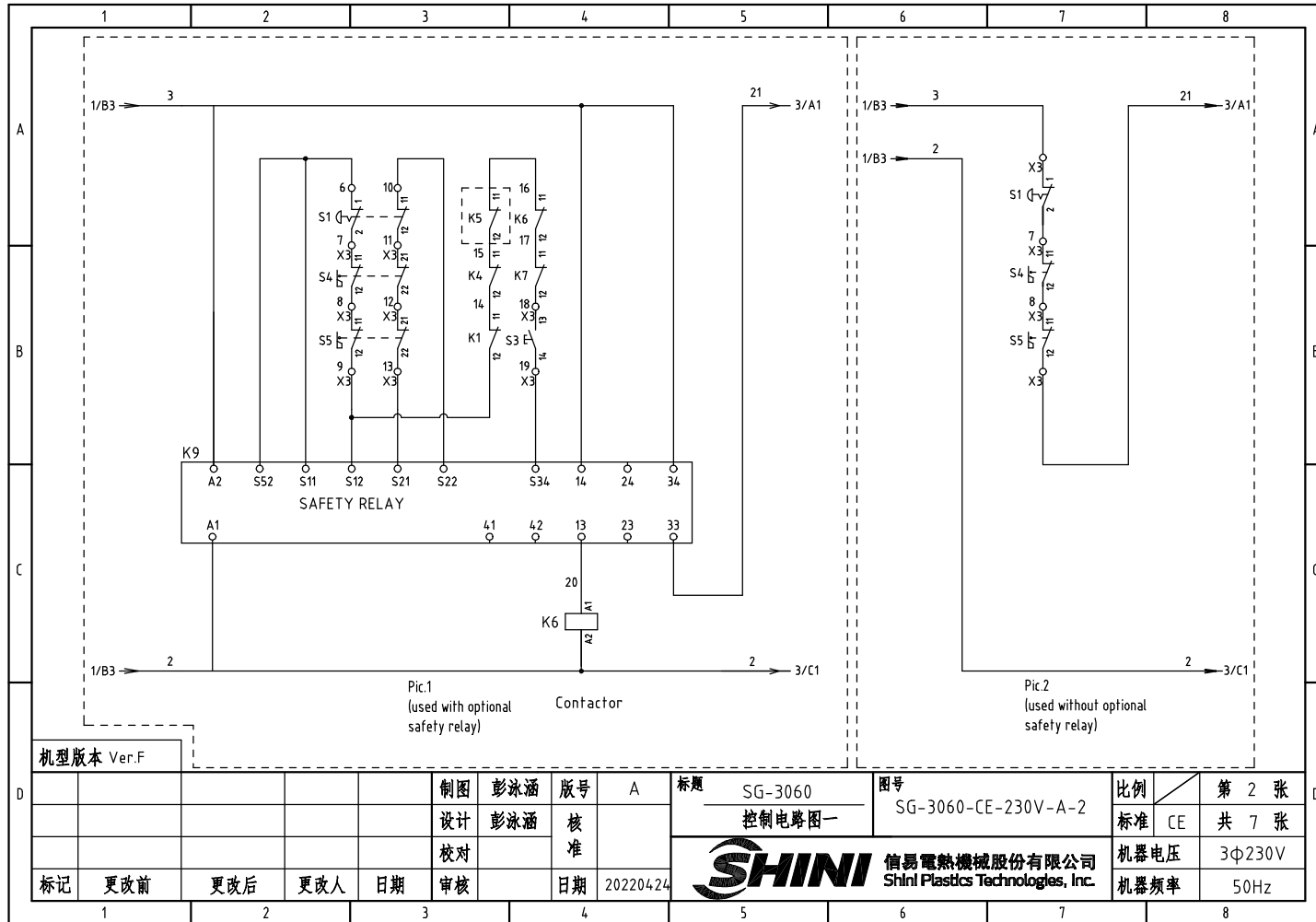




机型版本 Ver.F

制图	彭泳涵	版号	A
设计	彭泳涵	核准	
校对		核准	
标记	更改前	更改后	更改人
			日期
			20220424

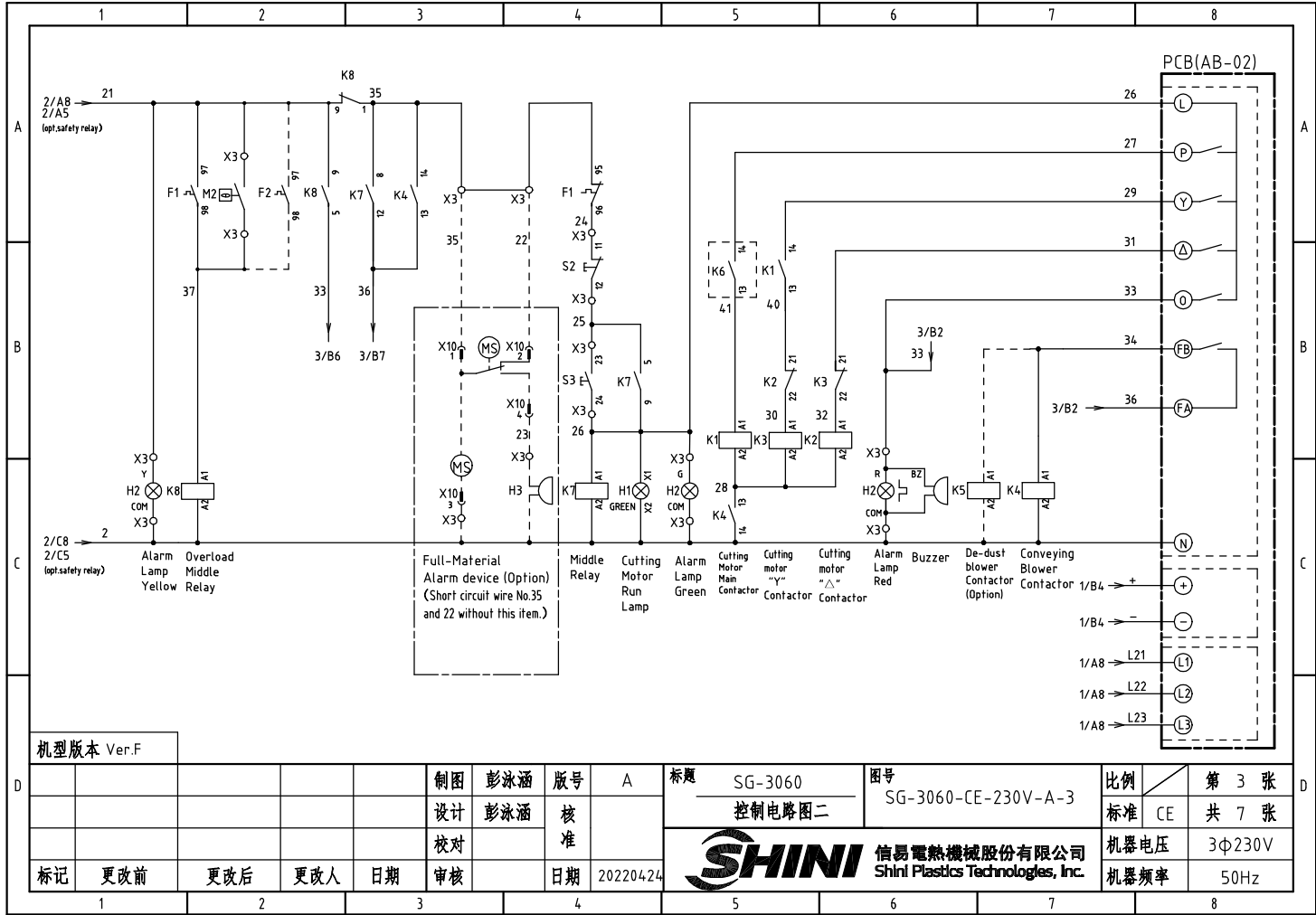
标题	SG-3060	图号	SG-3060-CE-230V-A-1
	主电路图		
信易电热机械股份有限公司 Shini Plastics Technologies, Inc.		比例	第 1 张
		标准	CE 共 7 张
		机器电压	3φ230V
		机器频率	50Hz

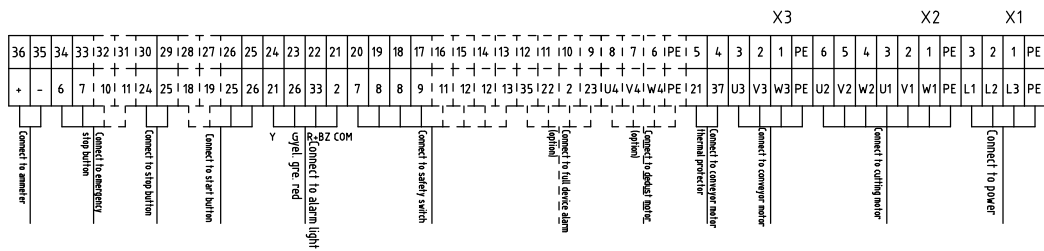
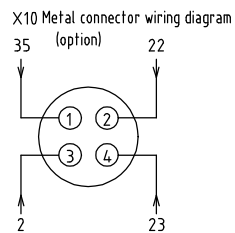
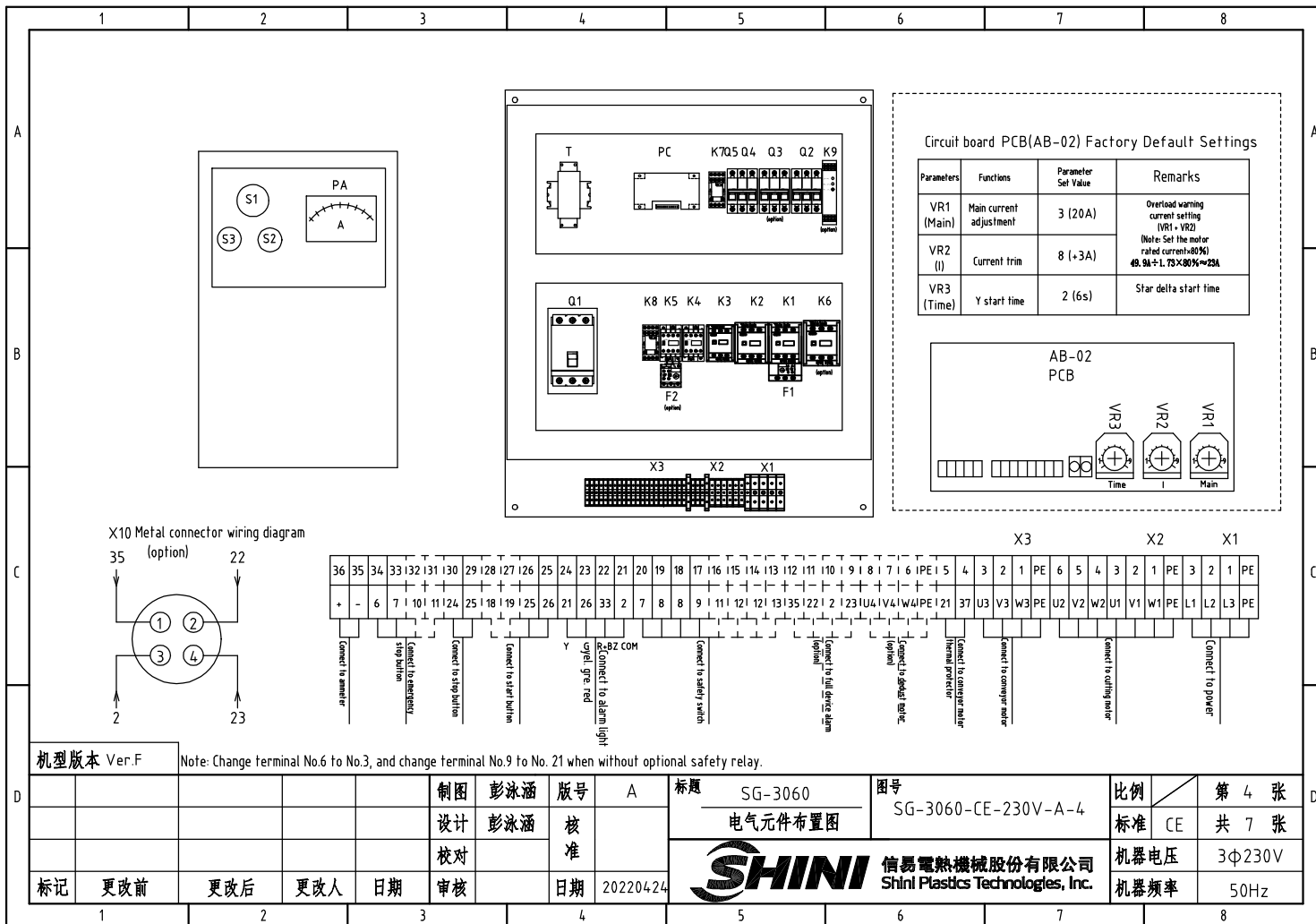


机型版本 Ver.F

制图	彭泳涵	版号	A
设计	彭泳涵	核准	
校对		核准	
标记	更改前	更改后	更改人
	日期	审核	日期
1	2	3	4

标题	SG-3060 控制电路图	图号	SG-3060-CE-230V-A-2
 信易電熱機械股份有限公司 Shini Plastics Technologies, Inc.		比例	第 2 张
		标准	CE 共 7 张
		机器电压	3Φ230V
		机器频率	50Hz
5	6	7	8





Circuit board PCB(AB-02) Factory Default Settings

Parameters	Functions	Parameter Set Value	Remarks
VR1 (Main)	Main current adjustment	3 (20A)	Overload warning current setting (VR1 - VR2) Note: Set the motor rated current (80%) 49.5A → L, 75 × 80% → 23A
VR2 (I)	Current trim	8 (+3A)	
VR3 (Time)	Y start time	2 (6s)	Star delta start time

机型版本 Ver.F Note: Change terminal No.6 to No.3, and change terminal No.9 to No. 21 when without optional safety relay.

制图	彭泳涵	版号	A	标题	SG-3060	图号	SG-3060-CE-230V-A-4	比例	第 4 张
设计	彭泳涵	核准			电气元件布置图			标准	CE 共 7 张
校对		日期	20220424					机器电压	3Φ230V
标记	更改前	更改后	更改人	日期	审核			机器频率	50Hz





1		2		3		4		5		6		7		8		
NO.	Symbol	Name		Manufacturer		Type		Specification		Number	Material number		Remark			
A	1	Q1	Plastics shell circuit breaker		TECO		TAX-125L3125		125A		1	YE40125301100				
	2		Ext. handle		TECO		FB1R-CS1-C-D1		-----		1	YE90111100300				
	3	Q2	Circuit breaker		TECO		BM-63C		10A		1	YE40301003000				
	4	Q3	Circuit breaker		TECO		BM-63C		6A		1	YE40300603000		(2)		
	5	K1	Contactor		SIEMENS		3RT5035-1AC20		40A 24VAC 50/60Hz		1	YE00503502600				
	6		Auxiliary contact		SIEMENS		3RH5921-1CA01		1NC		1	YE00592110100		(4)		
	7		Auxiliary contact		SIEMENS		3RH5921-1CA10		1NO		1	YE00592110000		(4)		
B	8	K2	Contactor		SIEMENS		3RT5035-1AC20		40A 24VAC 50/60Hz		1	YE00503502600				
	9		Auxiliary contact		SIEMENS		3RH5921-1CA01		1NC		1	YE00592110100				
	10	K3	Contactor		SIEMENS		3RT5034-1AC20		32A 24VAC 50/60Hz		1	YE00503400700				
	11		Auxiliary contact		SIEMENS		3RH5921-1CA01		1NC		1	YE00592110100				
	12	K4	Contactor		SIEMENS		3RT6015-1AB01		7A 24VAC 50/60Hz		1	YE00601502500				
	13		Auxiliary contact		SIEMENS		3RH6911-1HA11		1NC+1NO		1	YE00691100100				
	14	K5	Contactor		SIEMENS		3RT6015-1AB02		7A 24VAC 50/60Hz		1	YE00601502600		(2)		
C	15	K6	Contactor		SIEMENS		3RT5044-1AC20		65A 24VAC 50/60Hz		1	YE00504402600		(4)		
	16		Auxiliary contact		SIEMENS		3RH5921-1CA01		1NC		1	YE00592110100		(4)		
	17		Auxiliary contact		SIEMENS		3RH5921-1CA10		1NO		1	YE00592110000		(4)		
	18	K7	Middle relay		Honeywell		GR-2C-AC24V		24VAC		1	YE03022400300				
	19	K7	Middle relay		Honeywell		GR-4C-AC24V		24VAC		1	YE03042400300		(4)		
	20	K9	Safety relay		PILZ		PNOZ×2.8P		24V AC/DC		1	YE04023000000		(4)		
	21	F1	Overload relay		SIEMENS		3RU5136-4FB0		28-40A		1	YE01513600100				
	22	F2	Overload relay		SIEMENS		3RU6116-0KB0		0.9-1.25A		1	YE01160900000		(2)		
	23	K8	Middle relay		Honeywell		GR-2C-AC24V		24VAC		1	YE03022400300				
D	24	Q4	Circuit breaker		TECO		BM-63C/2003S 2P		3A		1	YE40200203000				
	25	Q5	Circuit breaker		TECO		BM-63C/1006S 1P		6A		1	YE40100600100				
机型版本 Ver:F		Notes:(1)Materials not in the control box;(2)Optional de-dust motor accessories;(3)Optional full mat. alarm ;(4)Optional safety relay;														
D					制图 彭泳涵		版号 A		标题 SG-3060		图号 SG-3060-CE-230V-A-5		比例		第 5 张	
					设计 彭泳涵		核 准		电气元件明细表一				标准 CE		共 7 张	
					校对						信易電熱機械股份有限公司 Shini Plastics Technologies, Inc.		机器电压		3φ230V	
	标记 更改前		更改后		更改人		日期						20220424		机器频率	
1		2		3		4		5		6		7		8		

1		2		3		4		5		6		7		8			
NO.	Symbol	Name		Manufacturer	Type		Specification		Number	Material number		Remark					
26	T	Transformer		-----	IN=230/200V OUT=24VAC		180VA		1	YE70023005400							
27	T	Transformer		-----	IN=230/200V OUT=24VAC		230VA		1	YE70023006100		(4)					
A	28	X1	Terminal board		HONEYWELL	GK35PE		35mm <sup>2</sup> PE		1	YE60003503500						
	29				Honeywell	GK35		35mm <sup>2</sup>		3	YE60003503200						
	30	X2	Terminal board		HONEYWELL	SK10		10mm <sup>2</sup>		6	YE60001003200						
	31				HONEYWELL	GK10PE		10mm <sup>2</sup> PE		1	YE60001003500						
	32	X3	Terminal board		HONEYWELL	SK2.5		2.5mm <sup>2</sup>		21	YE60002503200						
	33				HONEYWELL	GK2.5PE		2.5mm <sup>2</sup> PE		1	YE60002503400						
B	34				HONEYWELL	SK2.5		2.5mm <sup>2</sup>		3	YE60002503200		(2)				
	35				HONEYWELL	GK2.5PE		2.5mm <sup>2</sup> PE		1	YE60002503400		(2)				
	36				HONEYWELL	SK2.5		2.5mm <sup>2</sup>		4	YE60002503200		(3)				
	37				HONEYWELL	SK2.5		2.5mm <sup>2</sup>		8	YE60002503200		(4)				
	38		End plate		HONEYWELL	D-SK2.5		-----		1	YE60002501100						
	39		End plate		HONEYWELL	D-GK6(for GK6, GK10)		-----		1	YE60001000500						
	40		Terminal fittings		HONEYWELL	E/GK		-----		4	YE60000003900						
	C	41	S1	Emergency stop button		SCHNEIDER	XB2BS542C		400VAC		1	YE11254200000		(1)			
42			Contact block		SCHNEIDER	ZB2BE102C		1NC		1	YE00210203100		(1)(4)				
43		S2	Stop button		SCHNEIDER	XB2BA22C		400VAC		1	YE11222000000		(1)				
44		S3,H1	Start button (with light)		SCHNEIDER	XB2BW33B1C		24VAC		1	YE11233100000		(1)				
45			Contact block		SCHNEIDER	ZB2BE101C		1NO		1	YE00210103100		(1)(4)				
46		S4, S5	Safety switch		SCHMERSRC	AZ15-02ZVRK-1476		AZ-15		2	YE16147600100		(1)				
47		S4, S5	Safety switch		SCHMERSRC	AZ16-02ZVRK-1476		AZ-16		2	YE16147600000		(1)(4)				
48		H2	3-color alarm light		SHINI	red, gre, yel.+buzzer		24VAC		1	BL90002401520		(1)				
D	49	H3	Buzzer		TEND	EA-2		24VAC		1	YE84240200000		(1)(3)				
	50	MS	Mat. level switch		SIPAI	SR-80		24VAC		1	YE15802400100		(1)(3)				
机型版本 Ver.F		Notes:(1)Materials not in the control box;(2)Optional de-dust motor accessories;(3)Optional full mat. alarm ;(4)Optional safety relay;															
D					制图	彭泳涵	版号	A	标题	SG-3060		图号	SG-3060-CE-230V-A-6		比例	第 6 张	
					设计	彭泳涵	核		电气元件明细表二		标准		CE	共 7 张			
					校对		准		 <b>信易電熱機械股份有限公司</b> <b>Shini Plastics Technologies, Inc.</b>		机器电压		3φ230V				
	标记	更改前	更改后	更改人	日期	审核	日期	20220424			机器频率		50Hz				
1		2		3		4		5		6		7		8			

1		2		3		4		5		6		7		8	
NO.	Symbol	Name		Manufacturer	Type		Specification		Number	Material number		Remark			
51	TA1	Current mutual transformer		RATIO	RCT-35		75/5A		1	YE04750500000					
52	TA2	Current mutual transformer		YUYUN	-----		5-100A		1	-----		线路板自带			
53	PA	Ammeter		SFIM	DH-670		75/5A		1	YE25677500000		(1)			
54	X10	Metal connector		SHINI	PLT-254-PM		4P		1	YE68025400000		(1)(3)			
55		Metal connector		-----	PLT-254-RF		4P		1	YE68025400100		(1)(3)			
56	PCB	Microcomputer board/PCB		YUYUN	AB-02		24VAC		1	YE80022400100					
57	M1	Cutting motor		-----	15KW		230V 60HZ		1	-----		(1)			
58	M2	Solution blower		-----	0.55KW		230V 60HZ		1	-----		(1)			
59	M3	De-dust blower		-----	0.37KW		230V 60HZ		1	-----		(1)(2)			
机型版本 Ver.F Notes:(1)Materials not in the control box;(2)Optional de-dust motor accessories;(3)Optional full mat. alarm ;(4)Optional safety relay;															
制图		彭泳涵		版号		A		标题		SG-3060		图号		第 7 张	
设计		彭泳涵		核				SG-3060-CE-230V-A-7		比例		标准		CE 共 7 张	
校对				准				 <b>信易電熱機械股份有限公司</b> <b>Shini Plastics Technologies, Inc.</b>		机器电压		3Φ230V			
标记		更改前		更改后		更改人				日期		20220424		机器频率	