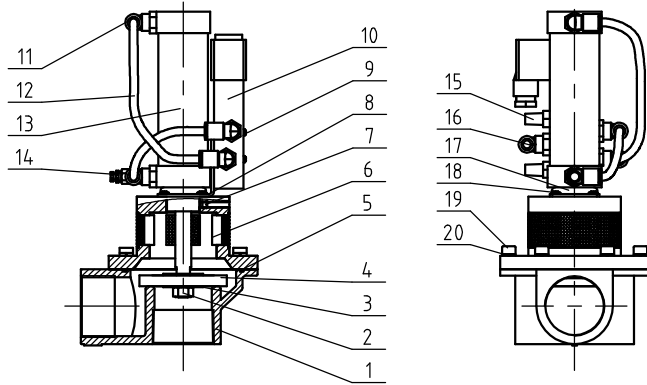


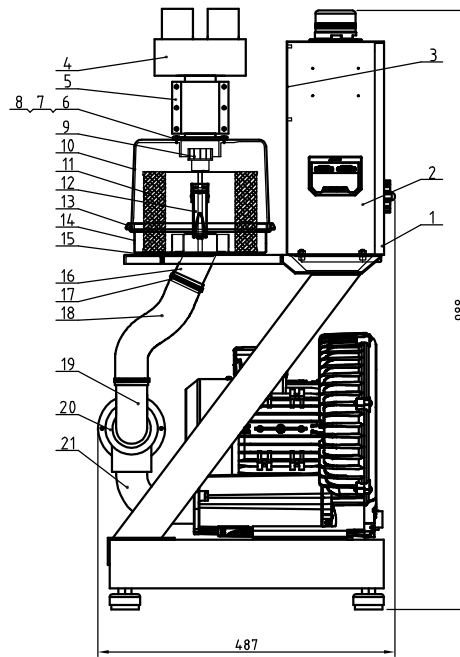
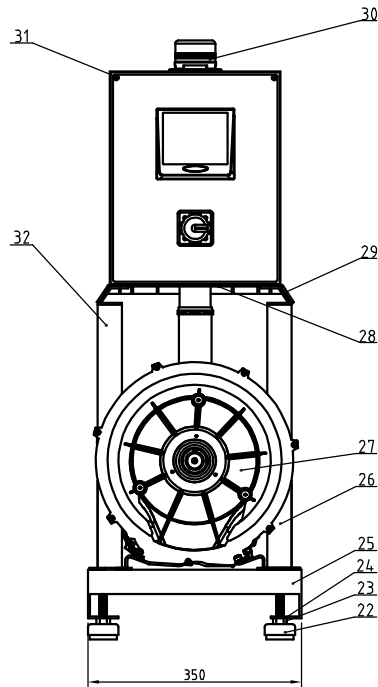
Attached: SVBV-38 assembly diagram and parts List(BY20003800300).



“*”Indicates the items that may be damaged; “* *” indicates the items that are more likely to be damaged.
It is recommended to back them up.
Please confirm the version number of the instruction manual before placing an order to purchase spare parts, so as to ensure that the material number of spare parts is consistent with the physical one.

20	YW65006000100	Standard spring washer GB/T93 6-Longzine		6	
19	YW61062000300	Inner hex column head screw GB/T70.1 M6x20-12.9-Longzine		6	
18	YW63040600000	Cross recessed pan head screw M4x6		4	
17	YR20305000000	O rubber seal ring $\phi 30 \times \phi 5^*$	Rubber	1	
16	YW80081800100	L screw connector APL8-01 1/8- $\phi 8$	Assembly	1	
15	YW80010800000	Copper silencer 1/8 (has mould)	Assembly	2	
14	YW80061800000	Adjustable air pipe connector ASL6-1/8	Assembly	1	
13	YE31326000100	Cylinder MBL32x60U (AIRTAC) *	Assembly	1	
12	YR60000600400	PU air pipe $\phi 6$ blk 200m/roll	PU	0.3m	
11	YW80061800200	L screw connector APL6-01 1/8- $\phi 6$	Assembly	3	
10	YE32421000300	Solenoid valve 4V210-06/DC24V AirTAC*	Assembly	1	
9	YW63043500000	Large washer A grade GB/T96 10/10.5x30x2.5-Longzine		2	
8	BL20380500020	Upper cover SVBV-38-ALL-05	SPCC2.0	1	
7	YW68005500000	Inner hex. flat end lock screw GB/T77 M5x5-Longzine		1	
6	BW20380100010	Upper cover SVBV-38-ALL-01	Assembly	1	
5	YR20258900000	O rubber seal ring 2.5x89*	Rubber	1	
4	BR10651200040	Four way valve diaphragm 65x12x8mm film covered (has mould)*	Assembly	1	
3	YW66103200000	Large washer A grade GB/T96 10/10.5x30x2.5-Longzine		2	
2		Hex nut M10x1.25		1	with cylinder
1	BW20001500910	Lower cover SPDV-38-ALL-02 white	YL112	1	
序号	代号	名称	材质	数量	备注

					制图	版号	标题	图号	比例	1:4	数量	1
					设计	核准	破真空分离阀	SVBV-38-ALL			材质	组件
					校对			信易电热机械股份有限公司 Shini Plastics Technologies, Inc.	表面要求			
标记	更改前	更改后	更改人	日期	审核	日期			物料号			



序号	代号	名称	材质	数量	备注
32		Left column		1	
31	YW67050800000	Cross recessed pan head self-tapping lock screw 8*16 L=16mm		2	
30	BL90000011520	Three color alarm light (red, yell. gr. + buzzer) AC/DC24 V		1	
29		Filter hopper fixed frame	SPCC3.0	1	
28	BL50135000020	Wire clamp fixed plate PG13.5 SG-S-01	SPCC2.0	1	
27	BM30042000050	Shini blower RB-3H/HP3 phase 220V/110V/5A/50Hz 3kw		1	
26		Right column	Assembly	1	
25		Base	SPCC3.0	1	
24	YW64012100000	Hex. nut GB/T16170 M12-Longzine		4	
23	YW66082200100	Large washer C grade GB/T968(8.4x24x2)-Longzine		4	
22	YW03005000000	Foot pad rubber Ø50 small	Rubber	4	
21		Air inlet pipe	SUS201	1	
20	BY20003800300	Vacuum breaking separating valve 5V8V-38-24VDC	Assembly	1	
19		Connecting pipe	SUS201	1	
18	YR60500700100	Steel wire hose 2"(PUR355)20M/roll	Assembly	0.7m	
17	YW02006500100	Stainless steel pipe clamp 65mm	Assembly	2	
16		Filter hopper base	Assembly	1	
15	YR10080000000	Fastener SAL-810G-A-04(ver.0) rubber (black)	Rubber	1	
14		Filter hopper cover	SPCC1.2	1	
13	YR10080000300	Filter hopper fastener SAL-810G-A-03*	Rubber	1	
12	YW02003000400	Spring SAL-6U-A-35*	Assembly	2	
11	YR50708000100	Filter 189x115x125 SAL-700G-A-20 ver.0	Rubber	1	
10	YL22081000000	Transparent filter barrel SAL-810G-A-05(ver.0)has mould	PC	1	
9	YW09675100000	Star nut 5/16 SHD-4~75KG-01-SJ alu alloy		1	
8	YW62041200000	Large cross recessed flat head JIS1111 Mx12-Longzine		4	
7	YR10243600000	Suction pipe round fastener SAL-24U/36U+	Rubber	1	
6		Filter hopper suction part	SUS201	1	
5	BW20002002050	Aluminum nozzle 2"	YL112	1	
4		Three way pipe	SUS201	1	
3		Control bottom plate	SECC1.5	1	
2		Control box body	SPCC1.5	1	
1		Control box cover plate	SPCC1.5	1	

Tech. Req:

1.Main performance parameters:

a. The output is 550kg/hr (the data is obtained under the test standard of materials' bulk density in diameter of 0.65kg/L, plastic particle diameter 3-5m, vertical height of 4 m, and horizontal distance of 5m).

b. Conveying pipe diameter: 1.5inch, suction air pipe diameter: 2inch, host unit weight: 56KG;

c. Machine power: 3phase,400VAC, 50Hz;

d. Machine high pressure blower power: 1.5 (3φ) kW;

e. Pneumatic working pressure: 0.4-0.8MPa.

f. Used with two SHR-6U-S hoppers. The single hopper capacity is 6L, and the single hopper weight is 7.5KG.

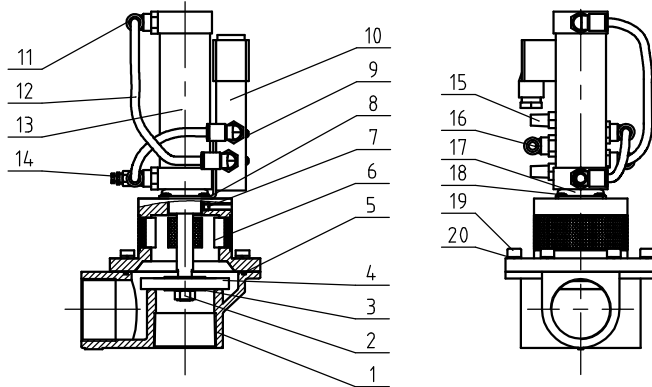
2. "x" indicates the items that may be damaged, "x x" indicates the items that are more likely to be damaged. It is recommended to back them up.

Please confirm the version number of the instruction manual before placing an order to purchase spare parts, so as to ensure that the material number of spare parts is consistent with the physical one.

制图	版号	标题	图号	比例	数量
设计	核	SAL-2HP-UG122	SAL-2HP-UG122-ALL	1:1	1
校对	准	一对二分高式真空填料机		材质	组件
审核	日期			表面要求	物料号
标记	更改前	更改后	更改人	日期	




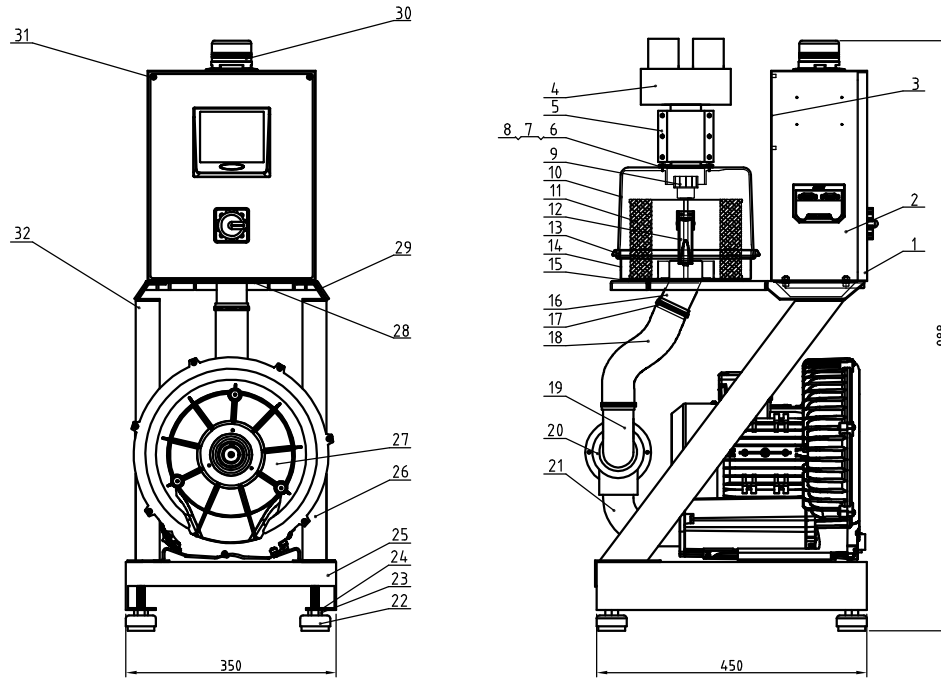
Attached: SVBV-38 assembly diagram and parts List(BY20003800300).



"*"Indicates the items that may be damaged; "*" *" indicates the items that are more likely to be damaged.
It is recommended to back them up.
Please confirm the version number of the instruction manual before placing an order to purchase spare parts, so as to ensure that the material number of spare parts is consistent with the physical one.

20	YW65006000100	Standard spring washer GB/T93 6-Longzine		6	
19	YW61062000300	Inner hex column head screw GB/T70.1 M6x20-12.9-Longzine		6	
18	YW63040600000	Cross recessed pan head screw M4x6		4	
17	YR20305000000	O rubber seal ring $\phi 30 \times \phi 5^*$	Rubber	1	
16	YW80081800100	L screw connector APL8-01 1/8- $\phi 8$	Assembly	1	
15	YW80010800000	Copper silencer 1/8 (has mould)	Assembly	2	
14	YW80061800000	Adjustable air pipe connector ASL6-1/8	Assembly	1	
13	YE31326000100	Cylinder MBL32x60U (AIRTAC) *	Assembly	1	
12	YR60000600400	PU air pipe $\phi 6$ blk 200m/roll	PU	0.3m	
11	YW80061800200	L screw connector APL6-01 1/8- $\phi 6$	Assembly	3	
10	YE32421000300	Solenoid valve 4V210-06/DC24V AirTAC*	Assembly	1	
9	YW63043500000	Cross recessed pan head screw GB/T-818 M4x35-Longzine		2	
8	BL20380500020	Solenoid valve fixed piece SPDV-38-ALL-05	SPCC2.0	1	
7	YW68005500000	Inner hex. flat end lock screw GB/T77 M5x5-Longzine		1	
6	BW20380100010	Upper cover SVBV-38-ALL-01	Assembly	1	
5	YR20258900000	O rubber seal ring 2.5x89(ext. dia.) *	Rubber	1	
4	BR10651200040	Four way valve diaphragm 65x12x8mm film covered (has mould)*	Assembly	1	
3	YW66103200000	Large washer A grade GB/T96 10(10.5x30x2.5)-Longzine		2	
2		Hex nut M10x1.25		1	气缸自带
1	BW20001500910	Lower cover SPDV-38-ALL-02 white	YL112	1	
序号	代号	名称	材质	数量	备注

					制图	版号	标题	SVBV-38	图号	SVBV-38-ALL	比例	1:4	数量	1
					设计	核准		破真空分离阀						
					校对									
					审核									
标记	更改前	更改后	更改人	日期	审核	日期								
 信易電熱機械股份有限公司 Shini Plastics Technologies, Inc.											表面要求			
											物料号			



Tech. Req:

1. Main performance parameters:

a. The output is 800kg/hr (the data is obtained under the test standard of materials' bulk density in diameter of 0.65kg/L, plastic particle diameter 3-5m, vertical height of 4 m, and horizontal distance of 5m).

b. Conveying pipe diameter: 1.5inch, suction air pipe diameter: 2inch, host unit weight: 56KG;

c. Machine power: 3phase, 400VAC, 50Hz;

d. Machine high pressure blower power: 1.5 (3φ) kW;

e. Pneumatic working pressure: 0.4-0.8MPa.

f. Used with two SHR-12U-S hoppers. The single hopper capacity is 12L, and the single hopper weight is 9KG.

2. "x" Indicates the items that may be damaged; "x x" indicates the items that are more likely to be damaged. It is recommended to back them up.

Please confirm the version number of the instruction manual before placing an order to purchase spare parts, so as to ensure that the material number of spare parts is consistent with the physical one.

序号	代号	名称	材质	数量	备注
32		Left column	Assembly	1	
31	YW67050800000	Cross recessed pan head self-tapping lock screw (Ø6x1.5x1.6mm)		2	
30	BL9000011520	Three color alarm light (red, yel. grn. + buzzer) AC/DC24. #	Assembly	1	
29		Filter hopper fixed frame	SPCC3.0	1	
28	BL50135000020	Wire clamp fixed plate PG13.5 SG-S-01	SPCC2.0	1	
27	BM30053000050	Shini blower RB-124 small 3P/1.5kw/ phase 220V/430V/50/60Hz 3φ	Assembly	1	
26		Right column	Assembly	1	
25		Base	SPCC3.0	1	
24	YW64.012100000	Hex. nut GB/T6170 M12-Longzine		4	
23	YW66082200100	Large washer C grade GB/T196818.4x24x21-Longzine		4	
22	YW03005000000	Foot pad rubber Ø50 small	Rubber	4	
21		Air inlet pipe	SUS201	1	
20	BY20003800300	Vacuum breaking separating valve SVBV-38-24VDC	Assembly	1	
19		Connecting pipe	SUS201	1	
18	YR60000200000	Steel wire hose 2"(PUR355)20M/roll#	Assembly	0.7m	
17	YW02006500100	Stainless steel pipe clamp 65mm	Assembly	2	
16		Filter hopper base	Assembly	1	
15	YR10080000000	Fastener SAL-810G-A-04(ver.0) rubber (black)	Rubber	1	
14		Filter hopper cover	SPCC1.2	1	
13	YR10080000300	Filter hopper fastener SAL-810G-A-03#	Rubber	1	
12	YW02003000400	Spring SAL-6U-A-35#	Assembly	2	
11	YR50708000100	Filter 18x115x125 SAL-700G-A-20 ver.0	Rubber	1	
10	YL22081000000	Transparent filter barrel SAL-810G-A-45(ver.0)has head#	PC	1	
9	YW09675100000	Star nut 5/16 SHD-6~75KG-01-SJ alu. alloy		1	
8	YW62041200000	Large cross recessed flat head JIS11116x12-Longzine		4	
7	YR10243600000	Suction pipe round fastener SAL-24U/36U#	Rubber	1	
6		Filter hopper suction port	SUS201	1	
5	BW20002002050	Aluminum nozzle 2"	YL112	1	
4		Three way pipe	SUS201	1	
3		Control bottom plate	SECC1.5	1	
2		Control box body	SPCC1.5	1	
1		Control box cover plate	SPCC1.5	1	

制图	版号	设计	核	校对	准	审核	日期
标记	更改前	更改后	更改人	日期	审核	日期	

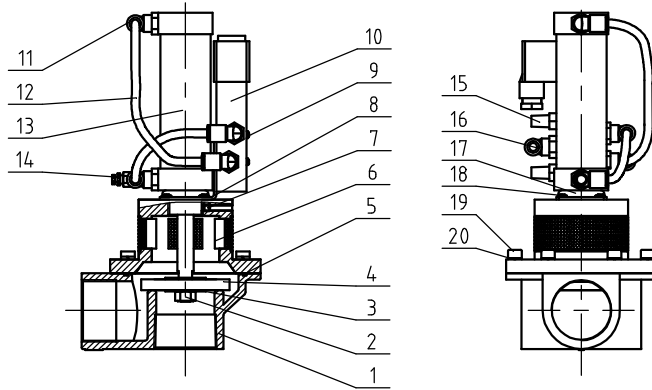
标题 SAL-3HP-UG122 图号 SAL-3HP-UG122-ALL 比例 1:7 数量 1

对三分式机型物料 表面处理 材质 组件

物料号

信易电热机械股份有限公司
Shini Plastics Technologies, Inc.

Attached: SVBV-38 assembly diagram and parts List(BY20003800300).



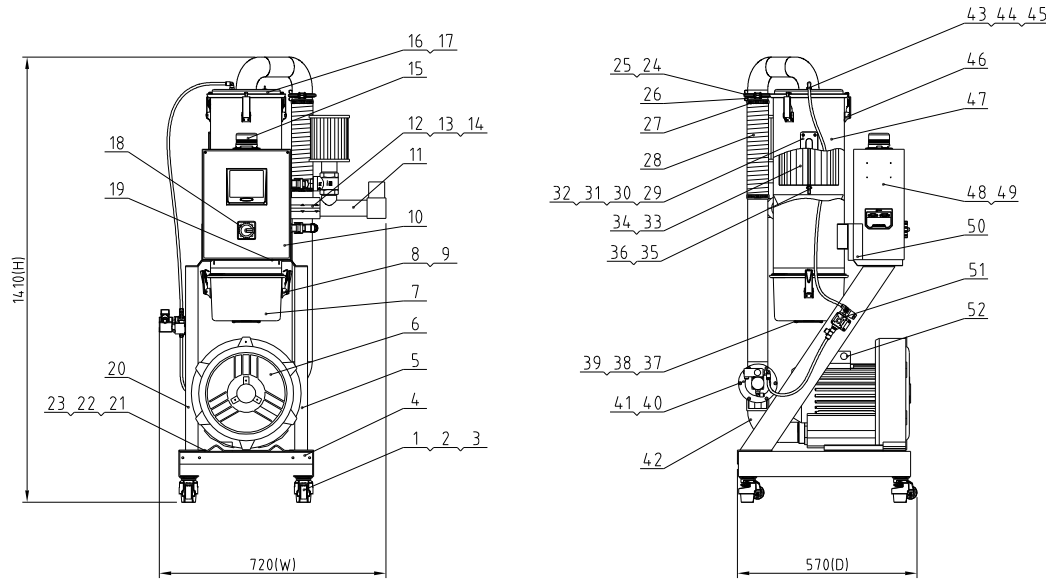
“*”Indicates the items that may be damaged; “**” indicates the items that are more likely to be damaged.
It is recommended to back them up.
Please confirm the version number of the instruction manual before placing an order to purchase spare parts, so as to ensure that the material number of spare parts is consistent with the physical one.

20	YW65006000100	Standard spring washer GB/T93 6-Longzine		6	
19	YW61062000300	Inner hex column head screw GB/T70.1 M6x20-12.9-Longzine		6	
18	YW63040600000	Cross recessed pan head screw M4x6		4	
17	YR20305000000	O rubber seal ring $\phi 30 \times \phi 5^*$	Rubber	1	
16	YW80081800100	L screw connector APL8-01 1/8- $\phi 8$	Assembly	1	
15	YW80010800000	Copper silencer 1/8 (has mould)	Assembly	2	
14	YW80061800000	Adjustable air pipe connector ASL6-1/8	Assembly	1	
13	YE31326000100	Cylinder MBL32x60U (AIRTAC) *	Assembly	1	
12	YR60000600400	PU air pipe $\phi 6$ blk 200m/roll	PU	0.3m	
11	YW80061800200	L screw connector APL6-01 1/8- $\phi 6$	Assembly	3	
10	YE32421000300	Solenoid valve 4V210-06/DC24V AirTAC*	Assembly	1	
9	YW63043500000	Cross recessed pan head screw GB/T-818 M4x35-Longzine		2	
8	BL20380500020	Solenoid valve fixed piece SPDV-38-ALL-05	SPCC2.0	1	
7	YW68005500000	Inner hex. flat end lock screw GB/T777 M5x5-Longzine		1	
6	BW20380100010	Upper cover SVBV-38-ALL-01	Assembly	1	
5	YR20258900000	O rubber seal ring 2.5x89(ext. dia.) *	Rubber	1	
4	BR10651200040	Four way valve diaphragm 65x12x8mm film covered (has mould)*	Assembly	1	
3	YW66103200000	Large washer A grade GB/T96 10(10.5x30x2.5)-Longzine		2	
2		Hex nut M10x1.25		1	气缸自带
1	BW20001500910	Lower cover SPDV-38-ALL-02 white	YL112	1	
序号	代号	名称	材质	数量	备注

					制图	版号	标题	图号	比例	1:4	数量	1
					设计	核	破真空分离阀	SVBV-38-ALL		表面要求	材质	组件
					校对	准		信易智能科技有限公司 Shini Plastics Technologies, Inc.	物料号			
标记	更改前	更改后	更改人	日期	审核	日期						

机器零件图与零件材料明细表 SAL-5HP-UG122

机型版本号: Ver E



Tech. Req:

1 Main performance parameters:

- a Output: 1200kg/hr (The data is obtained under the conditions: plastic material with bulk density: 0.65kg/L, dia 3-5mm, vertical conveying height: 4m, and horizontal conveying distance: 5m)
- b Conveying pipe dia: 1.5inch, suction pipe dia: 2inch
- c SAL-5HP-UG122 weight: 175KG
- d SAL-5HP-UG122 high pressure blower power: 3.75 (3φ) kW.
- e Pneumatic working pressure 0.4-0.8MPa.

2 "*"Indicates the items that may be damaged; "*" indicates the items that are more likely to be damaged. It is recommended to back them up. Please confirm the version number of the instruction manual before placing an order to purchase spare parts, so as to ensure that the material number of spare parts is consistent with the physical one.

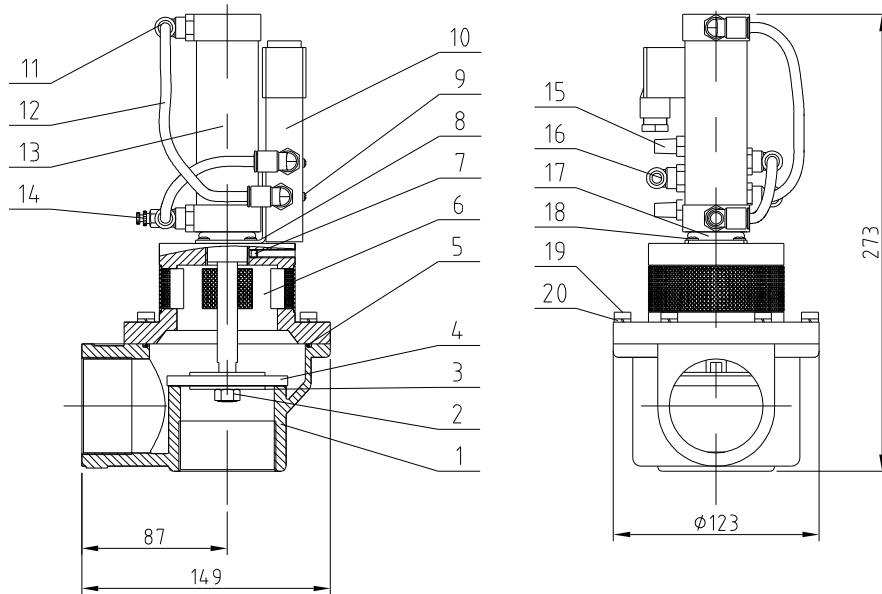
53		Copper connector	H58	1	1				
52		Filter spray valve assembly	Assembly	1	6	BM30055000050			
51		Filter barrel fixed frame	SPCC3.0	1	5				
50		Control bottom plate	SECC15	1	4				
49		Control box	SPCC15	1	3	YW03004000100			
48		Integrated filter barrel	Assembly	1	2	YW65006000100			
47	YW69050100000	Open flat round head blind rivet GB/T12618 4x6		6	1	YW67061500600			

46	YW69050100000	Open flat round head blind rivet GB/T12618 4x6		6					
45	YR60000800000	PU air pipe Ø8*66 black 100M/roll *		18M					
44	BH13033000810	Reversal spraying nozzle SAL-330-A-08	6061	1					
43	YW80083800200	L type screw connector APLB-03 3/8-Ø8	Assembly	1					
42		Inlet air pipe	SUS201	1					
41		Vacuum breaking diaphragm valve connecting pipe	SUS201	1					
40	BY20005000300	Vacuum breaking separating valve SVBV-50-24VDC	Assembly	1					
39	YW62041200000	Large cross socket flat head screw M6x12		4					
38	YR10243600000	Suction pipe round fastener SAL-24U/36U*	Rubber	1					
37	BL26000500220	Transparent filter barrel fender	SUS201	1					
36	YW66082200100	Large washer C grade GB/T9688 4x24x21-Longzine		1					
35	YW69051600000	Butterfly nut 5/16"		1					
34		Filter fixing plate	SECC20	1					
33	YR50181100000	Filter ADC2 ext 188* inner 116*high 302*	Assembly	1					
32	YW62051000100	Large cross socket flat head screw JIS1111 M5x10-Longzine		4					
31	BW09000030440	Acrylic four-hole iron sheet	Q235A	1					
30	YR40001200100	Acrylic four-hole material PC*	PC	1					
29	YR40000400000	Sight glass fastener four hole *	Rubber	1m					
28	YR60002500000	Steel wire hose 2.5" (PUR355)*	PUR355	0.3m					
27	YW02007600000	Stainless steel pipe clamp 76mm		2					
26		Air suction pipe	Assembly	1					
25	YR20002500300	Stainless steel pressing clamp seal ring 2.5"	Silica gel	1					
24	YW07002501600	Stainless steel punching clamp 2.5"	Assembly	1					
23	YW64101100000	Hex nut M10 anti-loose		4					
22	YW66103200000	Large washer A grade GB/T796 1010.5x30x2.51-Longzine		4					
21	YW61102000000	Inner hexagon cylinder screw GB/T701 M10x20-12.9-Longzine		4					
20		Left column	Assembly	1					
19	BL50135000020	Wire fixture fixed plate PG13.5 SG-S-01has mould	SPCC20	1					
18	YE10021160000	Main power switch T0-2-1EA/SVB	Assembly	1					
17	YR10080000300	Filter hopper fastener SAL-810G-A-03 rubber (white)	Nitrile rubber	2					
16		Filter lid Assembly	Assembly	1					
15	BL90000011520	Three color alarm lamp (Red yellow-buzzer)	Assembly	1					
14	YR50128200000	Suction box filter SP-F ext 128* inner 28*16*	Assembly	1					
13	YW59150000000	Check valve 15"(Copper)	Assembly	1					
12	BW20002002050	Aluminum pipe connector 2"	Assembly	1					
11		Three-way pipe	SUS201	1					
10		Control box cover plate	SPCC15	1					
9	YW69041200900	Open flat round head blind rivet GB/T12618 4x12		4					
8	YW02003000400	Adjustable snap hook SAL-6U-A-35*	Assembly	5					
7	YL22081000100	Transparent filter barrel (SAL-810G-A-05(Ver B))	Transparent PC	1					
6	BM30055000050	Shini blower RB-550*	Assembly	1					
		Right column	Assembly	1					
		Base	SPCC30	1					
		Fuma wheel GD-40F black	Rubber	4					
		Standard spring washer GB/T93 6-Longzine		16					
		Cross socket head tapping screw M6x15		16					

序号	代号	名称	材质	数量	备注	序号	代号	名称	材质	数量	备注		
		制图				标题	SAL-5HP-UG122	图号	SAL-5HP-UG122-ALL	比例	1:15	数量	1
		设计				一对二分离式真空填料机				表面要求	Assemble		
		校对				SHINI 信易电热机械股份有限公司 Shini Plastics Technologies, Inc.				物料号			
标记	更改前	更改后	更改人	日期	审核			日期					

附：SVBV-50 装配图与装配材料明细表(BY20005000300)

机型版本号: Ver.B



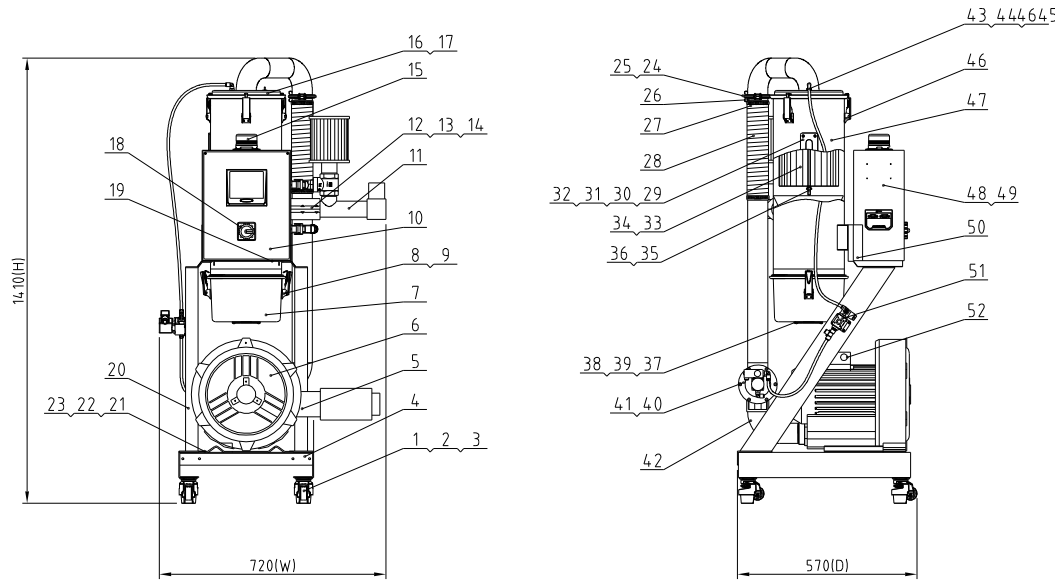
"*"Indicates the items that may be damaged; "**" indicates the items that are more likely to be damaged.
It is recommended to back them up.
Please confirm the version number of the instruction manual before placing an order to purchase spare parts, so as to ensure that the material number of spare parts is consistent with the physical one.

20	YW65006000100	Standard spring washer GB/T93 6-Longzine		6	
19	YW61062500000	Inner hexagon cylinder screw GB/T170.1 M6x25-A2-70(SUS)		6	
18	YW63040600000	Cross recessed pan head screw M4x6		4	
17	YR20305000000	O-type seal ring φ30xφ5 *	Rubber	1	
16	YW80081800100	L type screw connector APL8-01 1/8-φ8	Assembly	1	
15	YW80010800000	Copper muffler 1/8"(has mould)	Assembly	2	
14	YW80061800000	Adjustable air pipe connector ASL6-1/8	Assembly	1	
13	YE31326000100	Cylinder MBL32x60U(Air TAC) *	Assembly	1	
12	YR60000600400	PU air pipe φ6 black 200M/roll	PU	0.3m	
11	YW80061800200	L type screw connector APL6-01 1/8-φ6	Assembly	3	
10	YE32421600100	Solenoid valve 4V210-06/AC24V *	Assembly	1	
9	YW63042500000	Cross recessed pan head screw GB/T-818 M4x25-Longzine		2	
8	BL20380500020	Solenoid valve fixed piece SPDV-38-ALL-05	SPCC2.0	1	
7	YW68005500000	Inner hex flat end lock screw GB/T77 M5x5-Longzine		1	
6	BW20500100010	Upper cover SVBV-50-ALL-01	Assembly	1	
5	YR20259800000	Rubber O-type seal ring 2.5x98 *	Rubber	1	
4	BR10651200040	4-way valve diaphragm 65x12x8mm rubber(has mould) *	Assembly	1	
3	BL90201870020	Gasket SPDV-63-A-03(SUS201)		2	
2		Hex nut M10x1.25		1	Come with Cylinder
1	BW20001501210	Lower cover SPDV-50-ALL-02 white	ZL101	1	
序号	代号	名称	材质	数量	备注

					制图	版号	标题	图号	比例	1:4	数量	1
					设计	核准	SVBV-50	SVBV-50-ALL		材质	Assembly	
					校对	核准	破真空分离阀			表面要求		
标记	更改前	更改后	更改人	日期	审核	日期	信易电热机械股份有限公司 Shini Plastics Technologies, Inc.			物料号		

机器零件图与零件材料明细表 SAL-5HP-UG122-D

机型版本号: Ver E



Tech. Req.

1 Main performance parameters:

- a. Output: 1200kg/hr (The data is obtained under the conditions: plastic material with bulk density: 0.65kg/L, dia. 3-5mm, vertical conveying height: 4m, and horizontal conveying distance: 5m)
- b. Conveying pipe dia: 1.5inch, suction pipe dia: 2inch
- c. SAL-5HP-UG122-D weight: 175KG.
- d. SAL-5HP-UG122-D high pressure blower power: 3 (3φ) kW.
- e. Pneumatic working pressure: 0.4-0.8MPa.

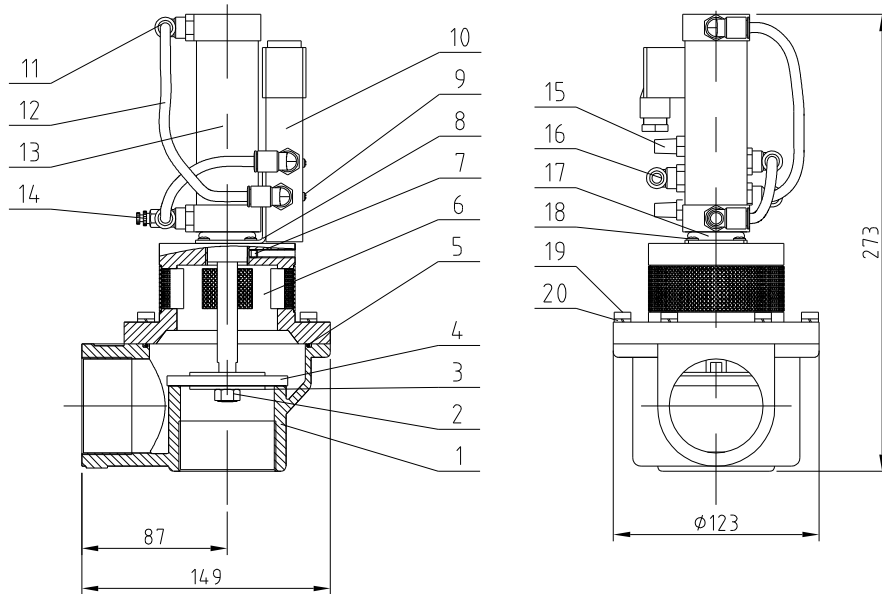
2 "*" indicates the items that may be damaged; "*" indicates the items that are more likely to be damaged. It is recommended to back them up. Please confirm the version number of the instruction manual before placing an order to purchase spare parts, so as to ensure that the material number of spare parts is consistent with the physical one.

46	YW69050100000	Open flat round head blind rivet GB/T12618 4x6		6	
45	YR60000800000	PU air pipe Φ8×Φ6 black 100M/roll *		1.8m	
44	BH13033000810	Reversal spraying nozzle SAL-330-A-08	6061	1	
43	YW80083800200	L type screw connector APLB-03 3/8-Φ8	Assembly	1	
42		Inlet air pipe	SUS201	1	
41		Vacuum breaking diaphragm valve connecting pipe	SUS201	1	
40	BY20005000300	Vacuum breaking separating valve SVBV-50-24 VDE	Assembly	1	
39	YW62041200000	Large cross socket flat head screw M6x12		4	
38	YR10243600000	Suction pipe round fastener SAL-240/360*	Rubber	1	
37	BL26000500220	Transparent filter barrel fender	SUS201	1	
36	YW66082200100	Large washer C grade GB/T9688 4x24x21-Longzone		1	
35	YW69051600000	Butterfly nut 5/16"		1	
34		Filter fixing plate	SECC2.0	1	
33	YR50181100000	Filter ADC2 ext. 188* inner 116*high 302*	Assembly	1	
32	YW62051000100	Large cross socket flat head screw JIS1111 M5x10-Longzone		4	
31	BW09000630040	Sight glass iron sheet 6 holes	SPCC2.0	1	
30	YR40000600000	Sight glass iron sheet 6 holes (SHD-12-A-25)*	Rubber	1	
29	YR40001200000	Acryl 6 holes (SHD-12-A-26)*	PC	1	
28	YR60002500000	Steel wire hose 2.5" (PUR355)*	PUR355	0.3m	
27	YW02007600000	Stainless steel pipe clamp 76mm		2	
26		Air suction pipe	Assembly	1	
25	YR20002500300	Stainless steel pressing clamp seal ring 2.5"*	silical get	1	
24	YW07002501600	Stainless steel punching clamp 2.5"	Assembly	1	
23	YW64101100000	Hex nut M10 anti-loose		4	
22	YW66103200000	Large washer A grade GB/T96 1019.5x30x2.51-Longzone		4	
21	YW61102000000	Inner hexagon cylinder screw GB/T70.1 M10x20-12.9-Longzone		4	
20		Left column	Assembly	1	
19	BL50135000020	Wire fixture fixed plate PG13.5 SG-S-01has mould	SPCC2.0	1	
18	YE10021160000	Main power switch TO-2-1EA/SVB	Assembly	1	
17	YR10080000300	Filter barrel fastener SAL-810G-A-03(Ver. All rubber (white))	Nitrile rubber	2	
16		Filter lid Assembly	Assembly	1	
15	BL90000011520	Three color alarm lamp (Red, yellow, green-buzzer)*	Assembly	1	
14	YR50128200000	Suction box filter SP-F ext 128*inner 28*14*	Assembly	1	
13	YW59150000000	Check valve 1.5" (Copper)	Assembly	1	
12	BW20002002050	Aluminum pipe connector 2"	Assembly	1	
11		Three-way pipe	SUS201	1	
10		Control box cover plate	SPCC1.5	1	
9	YW69041200900	Open flat round head blind rivet GB/T12618 4x12		4	
8	YW02003000400	Adjustable snap hook SAL-6U-A-35*	Assembly	5	
7	YL22081000100	Transparent filter barrel SAL-810G-A-05(Ver. B)*	Transparent PC	1	
6	YM30252000100	Runing blower ZHBS20H46*		1	
52		Copper connector	H58	1	
51		Filter spray valve assembly	Assembly	1	
50		Filter barrel fixed frame	SPCC3.0	1	
49		Control bottom plate	SECC1.5	1	
48		Control box	SPCC1.5	1	
47		Integrated filter barrel	Assembly	1	
46		Copper connector	H58	1	
45		Filter spray valve assembly	Assembly	1	
44		Filter barrel fixed frame	SPCC3.0	1	
43		Control bottom plate	SECC1.5	1	
42		Control box	SPCC1.5	1	
41		Integrated filter barrel	Assembly	1	
40		Large washer A grade GB/T96 1019.5x30x2.51-Longzone		4	
39		Large cross socket flat head screw M6x12		4	
38		Suction pipe round fastener SAL-240/360*	Rubber	1	
37		Transparent filter barrel fender	SUS201	1	
36		Large washer C grade GB/T9688 4x24x21-Longzone		1	
35		Butterfly nut 5/16"		1	
34		Filter fixing plate	SECC2.0	1	
33		Filter ADC2 ext. 188* inner 116*high 302*	Assembly	1	
32		Large cross socket flat head screw JIS1111 M5x10-Longzone		4	
31		Sight glass iron sheet 6 holes	SPCC2.0	1	
30		Sight glass iron sheet 6 holes (SHD-12-A-25)*	Rubber	1	
29		Acryl 6 holes (SHD-12-A-26)*	PC	1	
28		Steel wire hose 2.5" (PUR355)*	PUR355	0.3m	
27		Stainless steel pipe clamp 76mm		2	
26		Air suction pipe	Assembly	1	
25		Stainless steel pressing clamp seal ring 2.5"*	silical get	1	
24		Stainless steel punching clamp 2.5"	Assembly	1	
23		Hex nut M10 anti-loose		4	
22		Large washer A grade GB/T96 1019.5x30x2.51-Longzone		4	
21		Inner hexagon cylinder screw GB/T70.1 M10x20-12.9-Longzone		4	
20		Left column	Assembly	1	
19		Wire fixture fixed plate PG13.5 SG-S-01has mould	SPCC2.0	1	
18		Main power switch TO-2-1EA/SVB	Assembly	1	
17		Filter barrel fastener SAL-810G-A-03(Ver. All rubber (white))	Nitrile rubber	2	
16		Filter lid Assembly	Assembly	1	
15		Three color alarm lamp (Red, yellow, green-buzzer)*	Assembly	1	
14		Suction box filter SP-F ext 128*inner 28*14*	Assembly	1	
13		Check valve 1.5" (Copper)	Assembly	1	
12		Aluminum pipe connector 2"	Assembly	1	
11		Three-way pipe	SUS201	1	
10		Control box cover plate	SPCC1.5	1	
9		Open flat round head blind rivet GB/T12618 4x12		4	
8		Adjustable snap hook SAL-6U-A-35*	Assembly	5	
7		Transparent filter barrel SAL-810G-A-05(Ver. B)*	Transparent PC	1	
6		Runing blower ZHBS20H46*		1	
52		Copper connector	H58	1	
51		Filter spray valve assembly	Assembly	1	
50		Filter barrel fixed frame	SPCC3.0	1	
49		Control bottom plate	SECC1.5	1	
48		Control box	SPCC1.5	1	
47		Integrated filter barrel	Assembly	1	

序号	代号	名称	材质	数量	备注	序号	代号	名称	材质	数量	备注	
		制图						比例		1		
		设计						数量	1			
		校对						材质	Assembly			
标记	更改前	更改后	更改人	日期	审核	日期		表面要求				
							标题		SAL-5HP-UG122-D		图号	
									一对二分高真空填料机		SAL-5HP-UG122-D-ALL	
							SHINI		信易电热机械股份有限公司		物料号	
									Shini Plastics Technologies, Inc.			

附：SVBV-50 装配图与装配材料明细表(BY20005000300)

机型版本号: Ver.B



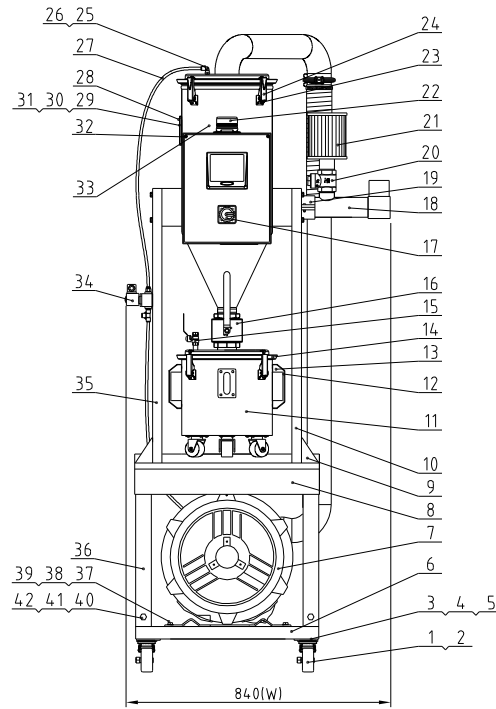
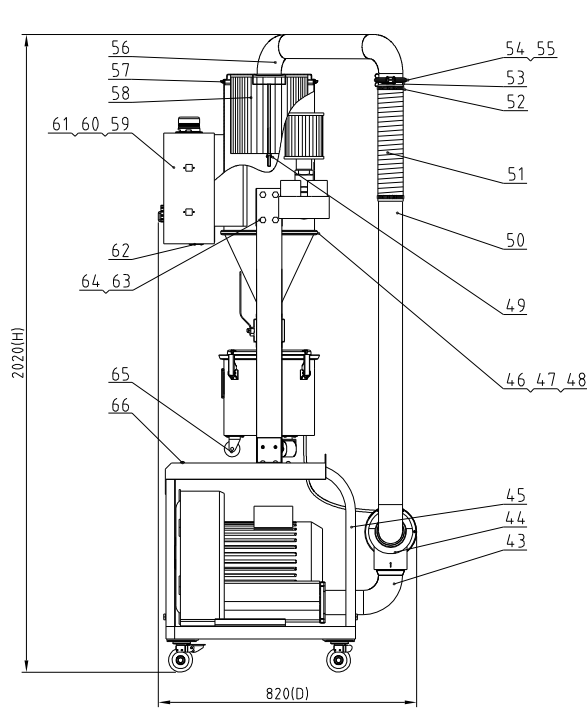
"*"Indicates the items that may be damaged; "**" indicates the items that are more likely to be damaged.
It is recommended to back them up.
Please confirm the version number of the instruction manual before placing an order to purchase spare parts, so as to ensure that the material number of spare parts is consistent with the physical one.

20	YW65006000100	Standard spring washer GB/T93 6-Longzine		6	
19	YW61062500000	Inner hexagon cylinder screw GB/T170.1 M6x25-A2-70(SUS)		6	
18	YW63040600000	Cross recessed pan head screw M4x6		4	
17	YR20305000000	O-type seal ring φ30xφ5 *	Rubber	1	
16	YW80081800100	L type screw connector APL8-01 1/8-φ8	Assembly	1	
15	YW80010800000	Copper muffler1/8"(has mould)	Assembly	2	
14	YW80061800000	Adjustable air pipe connector ASL6-1/8	Assembly	1	
13	YE31326000100	Cylinder MBL32x60U(Air TAC) *	Assembly	1	
12	YR60000600400	PU air pipe φ6 black 200M/roll	PU	0.3m	
11	YW80061800200	L type screw connector APL6-01 1/8-φ6	Assembly	3	
10	YE32421600100	Solenoid valve 4V210-06/AC24V *	Assembly	1	
9	YW63042500000	Cross recessed pan head screw GB/T-818 M4x25-Longzine		2	
8	BL20380500020	Solenoid valve fixed piece SPDV-38-ALL-05	SPCC2.0	1	
7	YW68005500000	Inner hex flat end lock screw GB/T77 M5x5-Longzine		1	
6	BW20500100010	Upper cover SVBV-50-ALL-01	Assembly	1	
5	YR20259800000	Rubber O-type seal ring 2.5x98 *	Rubber	1	
4	BR10651200040	4-way valve diaphragm 65x12x8mm rubber(has mould) *	Assembly	1	
3	BL90201870020	Gasket SPDV-63-A-03(SUS201)		2	
2		Hex nut M10x1.25		1	Come with Cylinder
1	BW20001501210	Lower cover SPDV-50-ALL-02 white	ZL101	1	
序号	代号	名称	材质	数量	备注

					制图	版号	标题	图号	比例	1:4	数量	1
					设计	核准	SVBV-50	SVBV-50-ALL		材质	Assembly	
					校对		破真空分离阀			表面要求		
标记	更改前	更改后	更改人	日期	审核	日期	信易电热机械股份有限公司 Shini Plastics Technologies, Inc.			物料号		

机器零件图与零件材料明细表 SAL-10HP-UG122

机型版本号: Ver E



Tech. Req.

1>Main performance parameters

- a. Output: 1800kg/hr (The data is obtained under the conditions: plastic material with bulk density: 0.65kg/L, dia. 3-5mm, vertical conveying height: 4m, and horizontal conveying distance: 5m)
- b. Conveying pipe dia.: 2inch, suction pipe dia.: 2.5inch.
- c. Weight: 185KG
- d. High pressure blower power: 7.5 (3φ) kW.
- e. Pneumatic working pressure: 0.4-0.8MPa.

2: "*"Indicates the items that may be damaged, "*" * indicates the items that are more likely to be damaged. It is recommended to back them up. Please confirm the version number of the instruction manual before placing an order to purchase spare parts, so as to ensure that the material number of spare parts is consistent with the physical one.

66	YW62061000000	Large cross socket flat head screw JIS1111 M6x10-Longzine		14
65	YW03000200000	Black castor 2"	Assembly	3
64	YW64080600000	Hexagonal nut GB/T6170 M8 Longzine		8
63	YW60085000000	Hexagon bolt GB/T5783 M8x50-8-Longzine		8
62	BL50135000020	Wire fixture fixed plate PG135 5G-S-01(has mould)	SPCC2.0	1
61		Control bottom plate	SECC15	1
60		Control box cover plate	SPCC15	1
59		Control box	SPCC15	1
58	YR50024400000	Filter outer 244 * inner 149 * height 250*	Assembly	1
57	YR10028700000	Filter hopper fastener *	Rubber	2
56		Filter lid Assembly	Assembly	1
55	YR20000300000	Stainless steel punching clamp seal ring 3"		1
54	YW07000300300	Stainless steel punching clamp 3"	SUS304	1
53		Air suction pipe	Assembly	1
52	YW02008900000	Stainless steel pipe clamp 89mm		2
51	YR60000300000	Steel wire hose 3"(PUR355)*	PUR355	0.4M
50		Vacuum breaking separating valve connecting pipe	SUS201	1
49	YW69051600000	Butterfly nut 5/16"	Q235	1
48	YR10241300100	Enlarged hopper fastener SHR-24U-A-13*	White silica gel	1

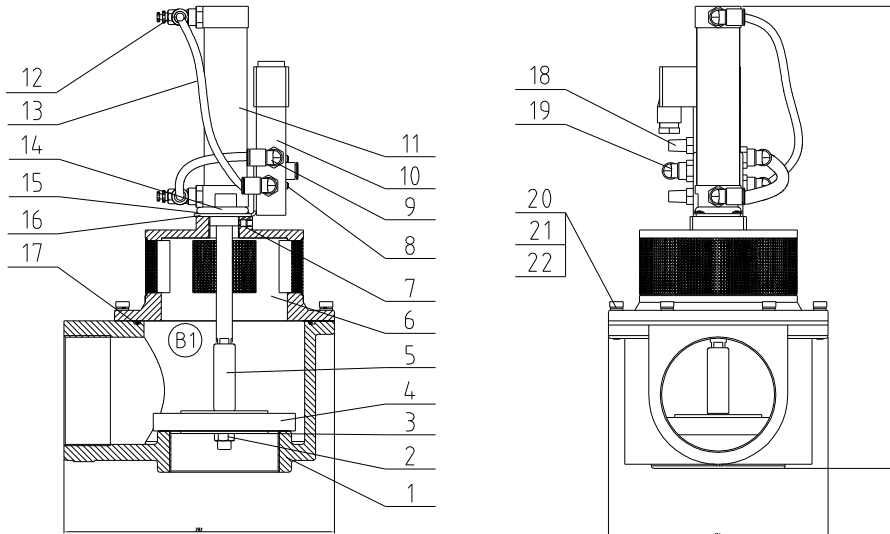
47		Bundle ring combination	Assembly	1
46		Filter hopper (lower)	Assembly	1
45		Bracket 1 Assembly	SPCC2.0	1
44	BY20007600450	Vacuum breaking separating valve SVBV-76(Ver B)*	Assembly	1
43		Inlet air pipe	SUS201	1
42	YW65008000100	Standard spring washer GB/T193 8-Longzine		12
41	YW66081600000	Flat washer A grade GB/T193 10-16-1.6L-Longzine		20
40	YW60081600100	Hexagon bolt GB/T5781 M8x16-4.8-Longzine		4
39	YW66103200000	Large washer A grade GB/T196 10/10 5x30x2.5L-Longzine		4
38	YW64101100000	Hex nut M10 anti-loose (thickness 11mm)		4
37	YW61105000000	Inner hexagon cylinder screw GB/T1701 M10x50-12.9-Longzine		4
36		Bracket 2 Assembly	SPCC2.0	1
35		Filter hopper Left column	SPCC3.0	1
34		Filter spray valve assembly	Assembly	1
33		Filter hopper (upper)	Assembly	1
32	YW67050800000	Cross socket pan head self-tapping lock screw GB6560 M5-8 Longzine		2
31	BW09000030440	Acrylic four-hole iron sheet	Q235A	2
30	YR40001200100	Acrylic four-hole material PC*	PC	2
29	YR40000400000	Sight glass fastener four hole *	Rubber	2
28	YW62051000100	Large cross socket flat head screw JIS1111 M5x10		8
27	YR60000800000	PU air pipe Ø8*Ø6 black 100M/roll *		2.3M
26	BH13033000810	Reversal spraying nozzle SAL-330-A-08	6061	1
25	YW80081200000	L type screw connector APL8-04 1/2-Ø8	Assembly	8
24	YW02003000400	Adjustable snap hook SAL-6U-A-35*	Assembly	8
23	YW690501000009	Open flat round head blind rivet GB/T 12618 4x6		16
22	BL90000011520	Three color alarm lamp (Red, yellow, green, buzzer)*	Assembly	1
21	YR50128200000	Suction box filter SP-Fexil. 128*inner 28 *16*	Assembly	1
20	YW59150000000	Check valve 15"(Copper)	Assembly	1
19	BW20002500050	Aluminum pipe connector 2.5"	Assembly	1
18		Three way pipe	SUS201	1
17	YE10323200000	Main power switch P1-32/EA/SVB 32A	Assembly	1
16	YW50020000000	Copper ball valve 2"	Assembly	1
15	YW50041000000	Copper ball valve 1/4" PT	Assembly	1
14		Dust collection bin cover	Assembly	1
13	YW61061601200	Inner hexagon cylinder screw GB/T1701 M6x16-12.9-Longzine		4
12	BW20012000040	Aluminum square handle L120	YL112	2
11		Dust collection bin welding parts	SPCC15	1
10		Filter hopper Right column	SPCC3.0	1
9		Column support	SPCC2.0	2
8		Middle plate	SPCC2.0	1
7	YM30281000100	Ruijing blower 2HB810H26 *	Assembly	1
6		Base	SPCC3.0	1
5	YW64012100000	Standard spring washer GB/T193 6-Longzine		16
4	YW66061800000	Large washer A grade GB/T196 16-Longzine		16
3	YW60061500100	Hexagon bolt GB/T5783 M6x16-12.9-Longzine		16
2	YW03000300200	Free type universal casters 3"	Assembly	2
1	YW03000300000	Brake type universal caster 3"	Assembly	2

制图	版号	标题	图号	比例	1:15	数量	1
设计	核准	SAL-10HP-UG122	SAL-10HP-UG122-ALL	数量	1	材质	Assembly
校对	日期	一对二分离式真空填料机		表面要求		物料号	
标记	更改前	更改后	更改人	日期	审核	日期	



附: SVBV-76 装配图与装配材料明细表(BY20007600450)

机型版本号: Ver.B



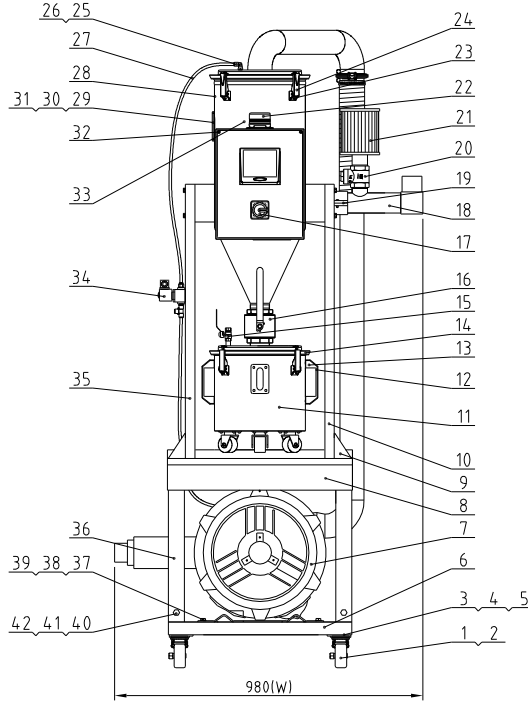
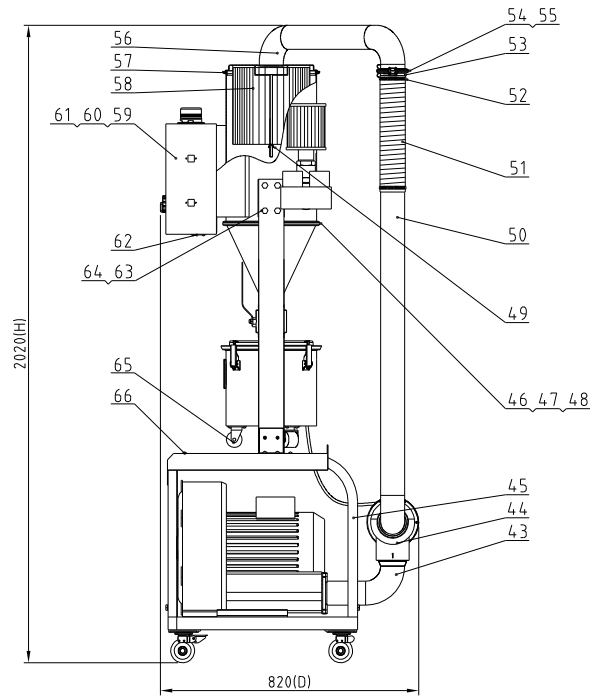
"*"Indicates the items that may be damaged; "**" indicates the items that are more likely to be damaged. It is recommended to back them up. Please confirm the version number of the instruction manual before placing an order to purchase spare parts, so as to ensure that the material number of spare parts is consistent with the physical one.

22	YW65006000100	Flat washer A grade GB/T97.16-Longzine		6	
21	YW65006000100	Standard spring washer GB/T93 6-Longzine		6	
20	YW61062501200	Inner hexagon cylinder screw GB/T70.1 M6x25-12.9-Longzine For automation		6	
19	YW80081800100	L type screw connector APL8-01 1/8-Ø8(Air TAC)	Assembly	1	
18	YW80010800000	Copper muffler 1/8"	Assembly	2	
17	YR20013030000	O-type seal ring Outer diameter 130, wire diameter 3 *	fluororubber	1	
16	BL20380500020	Solenoid valve fixed plate	SPCC20	1	
15	YW63040600000	Cross recessed pan head screw GB/T-818 M4x6-Longzine		4	
14	YR20305000000	O-type seal ring Ø30xØ5 *	Rubber	1	
13	YR60000600400	PU air pipe Ø6 black 200M/roll	PU	0.5M	
12	YW80061800000	Adjustable air pipe connector ASL6-1/8	Assembly	2	
11	YE31258000000	Cylinder MAL25x80-UIAIRTAC) *	Assembly	1	
10	YE32421600100	Solenoid valve 4V210-06/AC24V *	Assembly	1	
9	YW80061800200	L type screw connector APL6-01 1/8-Ø6(Air TAC)	Assembly	2	
8	YW63042500000	Cross recessed pan head screw GB/T-818 M4x25-Longzine		2	
7	YW68005500000	Inner hexagon flat-end set screw GB/T77 M5x5-Longzine		1	
6	BA90760200010	Upper cover	Assembly	1	
5	BH10007600310	Diaphragm fixing screw	Q235	1	
4	BL90007600040	Diaphragm *	Assembly	1	
3		Diaphragm gasket	SUS201	2	
2	YW64101100000	Hex. nut M10 anti-loose (thickness:11mm)		1	
1	BA90760100010	Lower cover	AC4B	1	

序号	代号	名称	材质	数量	备注
----	----	----	----	----	----

					制图	版号	标题	图号	比例	1:5	数量	1
					设计	核准	SVBV-76	SVBV-76-ALL			材质	Assembly
					校对			信易電熱機械股份有限公司 Shini Plastics Technologies, Inc.	表面要求			
标记	更改前	更改后	更改人	日期	审核	日期			物料号			

机器零件图与零件材料明细表 SAL-10HP-UG122-D



机型版本号: Ver E

4.7	Bundle ring combination	Assembly	1	
4.6	Filter hopper (lower)	Assembly	1	
4.5	Bracket 1 Assembly	SPCC2.0	1	
4.4	BY20007600450 Vacuum breaking separating valve SVBY-7624VDC*	Assembly	1	
4.3	Inlet air pipe	SUS201	1	
4.2	YW65008000100 Standard spring washer GB/T193 8-Longzine		12	
4.1	YW660081600000 Flat washer A grade GB/193 10-16-1-16-Longzine		20	
4.0	YW60081600100 Hexagon bolt GB/T5781 M8x16-4.8-Longzine		4	
3.9	YW66103200000 Large washer A grade GB/T196 10/10.5x30x2.5-Longzine		4	
3.8	YW64101100000 Hex nut M10 anti-loose (thickness 11mm)		4	
3.7	YW61105000000 Inner hexagon cylinder screw GB/T1701 M10x50-12.9-Longzine		4	
3.6	Bracket 2 Assembly	SPCC2.0	1	
3.5	Filter hopper Left column	SPCC3.0	1	
3.4	Filter spray valve assembly	Assembly	1	
3.3	Filter hopper (upper)	Assembly	1	
3.2	YW67050800000 Cross socket pan head self-tapping lock screw GB6560 M5-8 Longzine		2	
3.1	BW09000030440 Acrylic four-hole iron sheet	Q235A	2	
3.0	YR40001200100 Acrylic four-hole material PC	PC	2	
2.9	YR40000400000 Sight glass fastener four hole *	Rubber	2	
2.8	YW62051000100 Large cross socket flat head screw JIS1111 M5x10		8	
2.7	YR60000800000 PU air pipe $\varnothing 8 \times \varnothing 6$ black 100M/roll *		2.3M	
2.6	BH13033000810 Reversal spraying nozzle SAL-330-A-08	6061	1	
2.5	YW80081200000 L type screw connector APL8-04 1/2- $\varnothing 8$	Assembly	8	
2.4	YW020030004.00 Adjustable snap hook SAL-6U-A-35*	Assembly	8	
2.3	YW690501000009 Open flat round head blind rivet GB/T 12618 4x6		16	
2.2	BL90000011520 Three color alarm lamp (Red, yellow, green, buzzer)*	Assembly	1	
2.1	YR50128200000 Suction box filter SP-F ext. 128* inner 28* $\varnothing 8$ *	Assembly	1	
2.0	YW59150000000 Check valve 15"(Copper)	Assembly	1	
1.9	BW20002500050 Aluminum pipe connector 2.5"	Assembly	1	
1.8	Three way pipe	SUS201	1	
1.7	YE10323200000 Main power switch P1-32/EA/SVB 32A	Assembly	1	
1.6	YW50020000000 Copper ball valve 2"	Assembly	1	
1.5	YW50041000000 Copper ball valve 1/4" PT	Assembly	1	
1.4	Dust collection bin cover	Assembly	1	
1.3	YW61061601200 Inner hexagon cylinder screw GB/T1701 M6x16-12.9-Longzine		4	
1.2	BW20012000040 Aluminum square handle L120	YL112	2	
1.1	Dust collection bin welding parts	SPCC15	1	
1.0	Filter hopper Right column	SPCC3.0	1	
9	Column support	SPCC2.0	2	
8	Middle plate	SPCC2.0	1	
7	YM30272000100 Ruijing blower EHS2HB20H56*	Assembly	1	
6	Base	SPCC3.0	1	
5	YW64012100000 Standard spring washer GB/T193 6-Longzine		16	
4	YW66061800000 Large washer A grade GB/T196 16-Longzine		16	
3	YW60061500100 Hexagon bolt GB/T5781 M6x16-12.9-Longzine		16	
2	YW03000300200 Free type universal casters 3"	Assembly	2	
1	YW03000300000 Brake type universal caster 3"	Assembly	2	

Tech. Req:

- 1 Main performance parameters:
 - a Output: 2000kg/hr (The data is obtained under the conditions: plastic material with bulk density 0.65kg/L, dia 3-5mm, vertical conveying height: 4m, and horizontal conveying distance: 5m)
 - b Conveying pipe dia: 2inch, suction pipe dia: 2.5inch.
 - c Weight: 192KG
 - d High pressure blower power: 7.5 (3 ϕ) kW.
 - e Pneumatic working pressure: 0.4-0.8MPa.

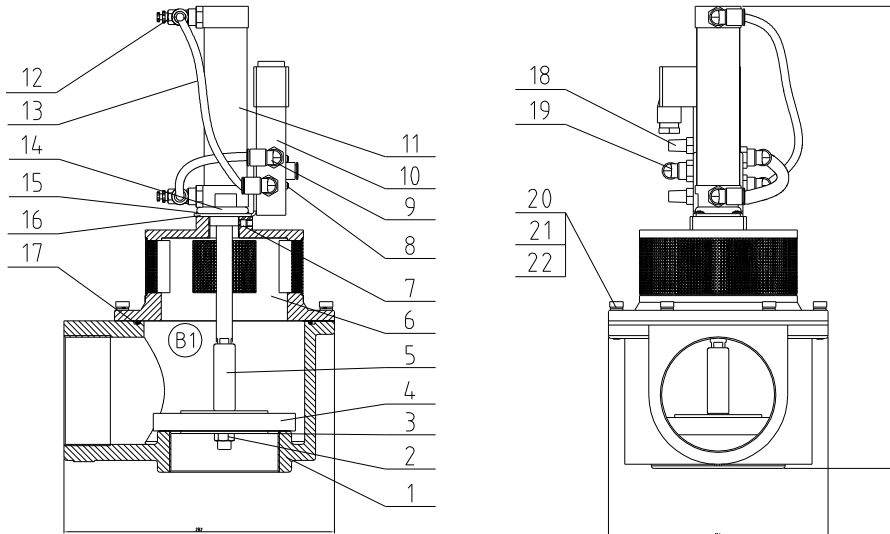
2 "*"Indicates the items that may be damaged, "*" indicates the items that are more likely to be damaged. It is recommended to back them up. Please confirm the version number of the instruction manual before placing an order to purchase spare parts, so as to ensure that the material number of spare parts is consistent with the physical one.

6.6	YW62061000000 Large cross socket flat head screw JIS1111 M6x10-Longzine		14	
6.5	YW03000200000 Black castor 2"	Assembly	3	
6.4	YW64080600000 Hexagonal nut GB/T6170 M8 Longzine		8	
6.3	YW60085000000 Hexagon bolt GB/T5783 M8x50-8.8-Longzine		8	
6.2	BL50135000020 Wire fixture fixed plate PG135 SG-S-01(has mould)	SPCC2.0	1	
6.1	Control bottom plate	SECC15	1	
6.0	Control box cover plate	SPCC15	1	
5.9	Control box	SPCC15	1	
5.8	YR50024400000 Filter outer 244 * inner 149 * height 250 *	Assembly	1	
5.7	YR10028700000 Filter hopper fastener *	Rubber	2	
5.6	Filter lid Assembly	Assembly	1	
5.5	YR20000300000 Stainless steel punching clamp seal ring 3" *		1	
5.4	YW07000300300 Stainless steel punching clamp 3"	SUS304	1	
5.3	Air suction pipe	Assembly	1	
5.2	YW02008900000 Stainless steel pipe clamp 8mm		2	
5.1	YR60000300000 Steel wire hose 3"(PUR355) *	PUR355	0.4M	
5.0	Vacuum breaking separating valve pipe connector	SUS201	1	
4.9	YW69051600000 Butterfly nut 5/16"	Q235	1	
4.8	YR10241300100 Enlarged hopper fastener SHR-24U-A-13 *	铝铁	1	

制图	版号	标题	图号	比例	1:15	数量	1
设计	核准	SAL-10HP-UG122-D	SAL-10HP-UG122-D-ALL	材质	Assembly		
校对	日期	一对二分离式真空填料机	SHINI 信易电热机械股份有限公司	表面要求			
标记	更改前	更改后	更改人	日期	审核	日期	物料号

附: SVBV-76 装配图与装配材料明细表(BY20007600450)

机型版本号: Ver.B



"*"Indicates the items that may be damaged; "**" indicates the items that are more likely to be damaged. It is recommended to back them up. Please confirm the version number of the instruction manual before placing an order to purchase spare parts, so as to ensure that the material number of spare parts is consistent with the physical one.

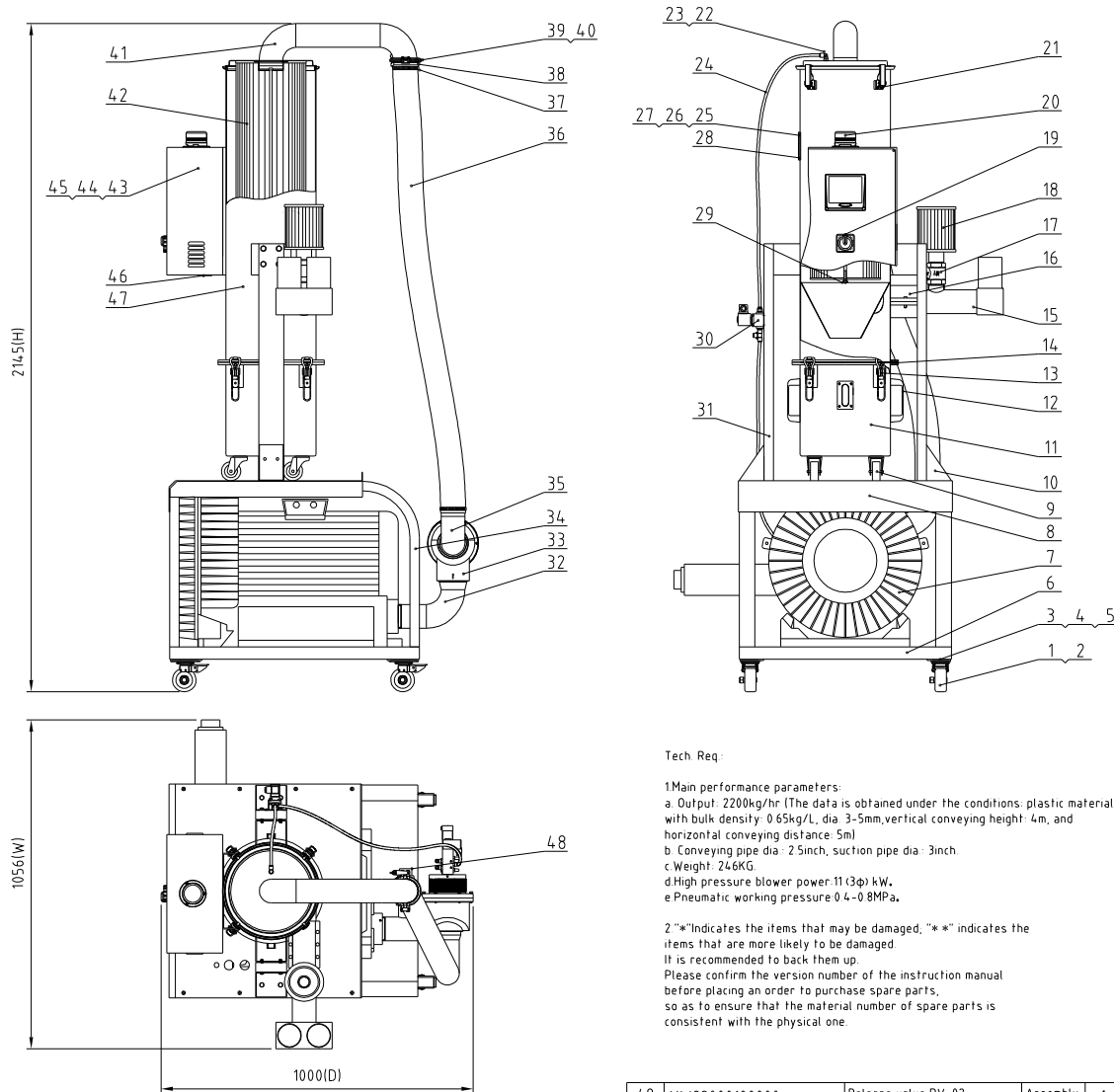
22	YW65006000100	Flat washer A grade GB/T97.16-Longzine		6	
21	YW65006000100	Standard spring washer GB/T93 6-Longzine		6	
20	YW61062501200	Inner hexagon cylinder screw GB/T70.1 M6x25-12.9-Longzine For automation		6	
19	YW80081800100	L type screw connector APL8-01 1/8-Ø8(Air TAC)	Assembly	1	
18	YW80010800000	Copper muffler 1/8"	Assembly	2	
17	YR20013030000	O-type seal ring Outer diameter 130, wire diameter 3 *	fluororubber	1	
16	BL20380500020	Solenoid valve fixed plate	SPCC20	1	
15	YW63040600000	Cross recessed pan head screw GB/T-818 M4x6-Longzine		4	
14	YR20305000000	O-type seal ring Ø30xØ5 *	Rubber	1	
13	YR60000600400	PU air pipe Ø6 black 200M/roll	PU	0.5M	
12	YW80061800000	Adjustable air pipe connector ASL6-1/8	Assembly	2	
11	YE31258000000	Cylinder MAL25x80-UI(AIR TAC) *	Assembly	1	
10	YE32421600100	Solenoid valve 4V210-06/AC24V *	Assembly	1	
9	YW80061800200	L type screw connector APL6-01 1/8-Ø6(Air TAC)	Assembly	2	
8	YW63042500000	Cross recessed pan head screw GB/T-818 M4x25-Longzine		2	
7	YW68005500000	Inner hexagon flat-end set screw GB/T77 M5x5-Longzine		1	
6	BA90760200010	Upper cover	Assembly	1	
5	BH10007600310	Diaphragm fixing screw	Q235	1	
4	BL90007600040	Diaphragm *	Assembly	1	
3		Diaphragm gasket	SUS201	2	
2	YW64101100000	Hex. nut M10 anti-loose (thickness:11mm)		1	
1	BA90760100010	Lower cover	AC4B	1	

序号	代号	名称	材质	数量	备注
----	----	----	----	----	----

					制图	版号	标题	图号	比例	1:5	数量	1
					设计	核准	SVBV-76	SVBV-76-ALL		材质	Assembly	
					校对		Vacuum breaking separating valve			表面要求		
标记	更改前	更改后	更改人	日期	审核	日期	信易電熱機械股份有限公司 Shini Plastics Technologies, Inc.				物料号	

机器零件图与零件材料明细表 SAL-20HP-UG122-D

机型版本号: Ver E



Tech Req:

- 1 Main performance parameters:
 a Output: 2200kg/hr (The data is obtained under the conditions: plastic material with bulk density 0.65kg/L, dia 3-5mm, vertical conveying height 4m, and horizontal conveying distance 5m)
 b Conveying pipe dia: 2.5inch, suction pipe dia: 3inch
 c Weight: 246KG
 d High pressure blower power 11 (3φ) kW.
 e Pneumatic working pressure 0.4-0.8MPa.

2 "*" indicates the items that may be damaged, "*" indicates the items that are more likely to be damaged. It is recommended to back them up. Please confirm the version number of the instruction manual before placing an order to purchase spare parts, so as to ensure that the material number of spare parts is consistent with the physical one.

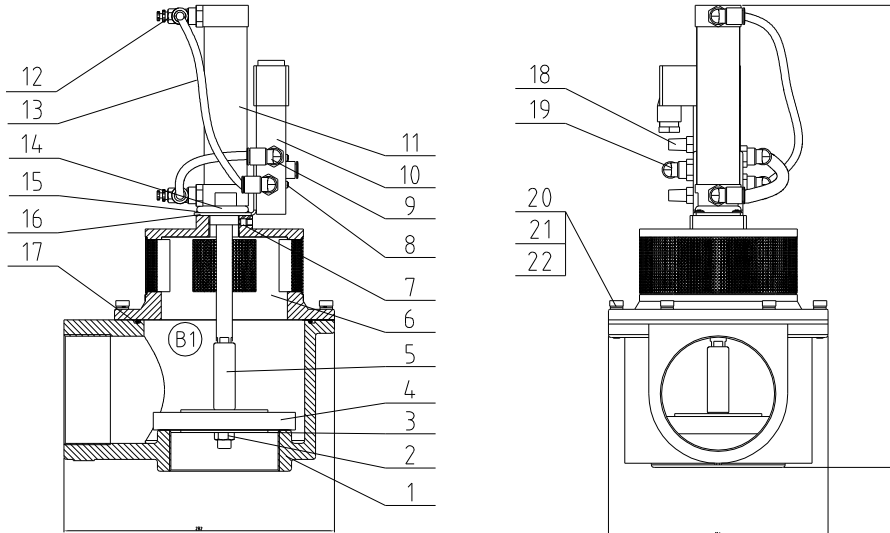
47	Integrated filter barrel	Assembly	1	
46	BL45000502120	Wire fixture fixed plate M25 SG-5-01	SPCC2 0	1
45		Bottom plate of control box	SECC15	1
44		Control box cover plate	SPCC15	1
43		Control box	SPCC15	1
42	YR50226000000	Filter φ225×φ145×600*	SPCC15	1
41		Filter lid Assembly	Assembly	1
40	YR20000300000	Stainless steel punching clamp seal ring 3"*		1
39	YW07000300300	Stainless steel punching clamp 3"	SUS304	1
38		Air suction pipe	Assembly	
37	YW02003500000	Stainless steel clamp 35°		2
36	YR60303000000	Steel wire hose 3"*		1.6m
35		Vacuum breaking separating valve connecting pipe	SUS201	1
34		Welding diagram of bracket	SPCC2 0	2 pieces in total
33	BY20007600450	Vacuum breaking separating valve SVBV-76*	Assembly	1
32		Inlet air pipe	SUS201	1
31		Filter hopper standing pole	SPCC2 0	2
30		Filter spray valve assembly	Assembly	1
29	YW69000800000	Butterfly nut 5/16"	Q235A	1
28	YW62051000100	Large cross socket flat head screw JIS1111 M5x10-Longzine		8
27	BW09000030440	Acrylic four-hole iron sheet	Q235A	2
26	YR40001200100	Acrylic four-hole material PC*	PC	2
25	YR40000400000	Sight glass fastener four hole *	Rubber	2
24	YR60000800000	PU air pipe φ8×φ6 black *		2.5M
23	BH13033000810	Reversal spraying nozzle SAL-330-A-08	6061	1
22	YW80081200000	L type screw connector APL8-04 1/2-φ8	Assembly	8
21	YW02003000400	Adjustable snap hook SAL-6U-A-35	Assembly	4
20	BL90000011520	Three color alarm lamp (Red, yellow, buzzer)*	Assembly	1
19	YE10210300000	Main power switch	Assembly	1
18	YR50128200000	Suction box filter ext. 128×inner 28×14.8*	Assembly	1
17	YW59150000000	Check valve 157(Copper)	Assembly	1
16	BH80003010050	Stainless steel pipe coupler SPC-3"	Assembly	1
15		Three-way pipe	SUS201	1
14	YE32051800100	Dust collective hopper fastener *	Silical gel	1
13	YW00121000400	Big handle for SAL-20HP-UG-D)	Assembly	4
12	BW20012000040	Aluminum square handle L120	YL112	2
11		Dust collection bin	SPCC15	1
10		Column support	SPCC2 0	2
9	YW03000200000	Black castor 2"	Assembly	3
8		Middle plate	SPCC2 0	1
7	YM30211000100	Ruujing blower 2HB820H36 11KW*	Assembly	1
6		Base	SPCC3.0	1
5	YW65006000100	Standard spring washer GB/T93 6-Longzine		16
4	YW66061300000	Flat washer A grade GB/T97.1 6-Longzine		16
3	YW60061500100	Hexagon bolt GB/T5783 M6x16-12.9-Longzine		16
2	YW03000300200	Free type universal casters 3"	Assembly	2
1	YW03000300000	Brake type universal caster 3"	Assembly	2

48	YW82000100000	Release valve RV-02	Assembly	1		1	YW03000300000	Brake type universal caster 3"	Assembly	2	
序号	代号	名称	材质	数量	备注	序号	代号	名称	材质	数量	备注

				制图		版号		标题		图号		比例		1:15		数量		1	
				设计		核准		欧化分离式真空填料机		SAL-20HP-UG122-D-ALL		表面要求		材质		Assembly			
				校对				SHINI		信易电热机械股份有限公司 Shini Plastics Technologies, Inc.		物料号							
标记		更改前		更改后		更改人								日期		审核		日期	

附: SVBV-76 装配图与装配材料明细表(BY20007600450)

机型版本号: Ver.B



"*"Indicates the items that may be damaged; "**" indicates the items that are more likely to be damaged. It is recommended to back them up. Please confirm the version number of the instruction manual before placing an order to purchase spare parts, so as to ensure that the material number of spare parts is consistent with the physical one.

22	YW65006000100	Flat washer A grade GB/T97.16-Longzine		6	
21	YW65006000100	Standard spring washer GB/T93 6-Longzine		6	
20	YW61062501200	Inner hexagon cylinder screw GB/T70.1 M6x25-12.9-Longzine For automation		6	
19	YW80081800100	L type screw connector APL8-01 1/8-Ø8(Air TAC)	Assembly	1	
18	YW80010800000	Copper muffler 1/8"	Assembly	2	
17	YR20013030000	O-type seal ring Outer diameter 130, wire diameter 3 *	fluororubber	1	
16	BL20380500020	Solenoid valve fixed plate	SPCC20	1	
15	YW63040600000	Cross recessed pan head screw GB/T-818 M4x6-Longzine		4	
14	YR20305000000	O-type seal ring Ø30xØ5 *	Rubber	1	
13	YR60000600400	PU air pipe Ø6 black 200M/roll	PU	0.5M	
12	YW80061800000	Adjustable air pipe connector ASL6-1/8	Assembly	2	
11	YE31258000000	Cylinder MAL25x80-UIAIRTAC) *	Assembly	1	
10	YE32421600100	Solenoid valve 4V210-06/AC24V *	Assembly	1	
9	YW80061800200	L type screw connector APL6-01 1/8-Ø6(Air TAC)	Assembly	2	
8	YW63042500000	Cross recessed pan head screw GB/T-818 M4x25-Longzine		2	
7	YW68005500000	Inner hexagon flat-end set screw GB/T77 M5x5-Longzine		1	
6	BA90760200010	Upper cover	Assembly	1	
5	BH10007600310	Diaphragm fixing screw	Q235	1	
4	BL90007600040	Diaphragm *	Assembly	1	
3		Diaphragm gasket	SUS201	2	
2	YW64101100000	Hex. nut M10 anti-loose (thickness:11mm)		1	
1	BA90760100010	Lower cover	AC4B	1	

序号	代号	名称	材质	数量	备注
----	----	----	----	----	----

					制图	版号	标题	图号	比例	1:5	数量	1
					设计	核准	SVBV-76	SVBV-76-ALL		材质	Assembly	
					校对		Vacuum breaking separating valve			表面要求		
标记	更改前	更改后	更改人	日期	审核	日期	信易電熱機械股份有限公司 Shini Plastics Technologies, Inc.				物料号	