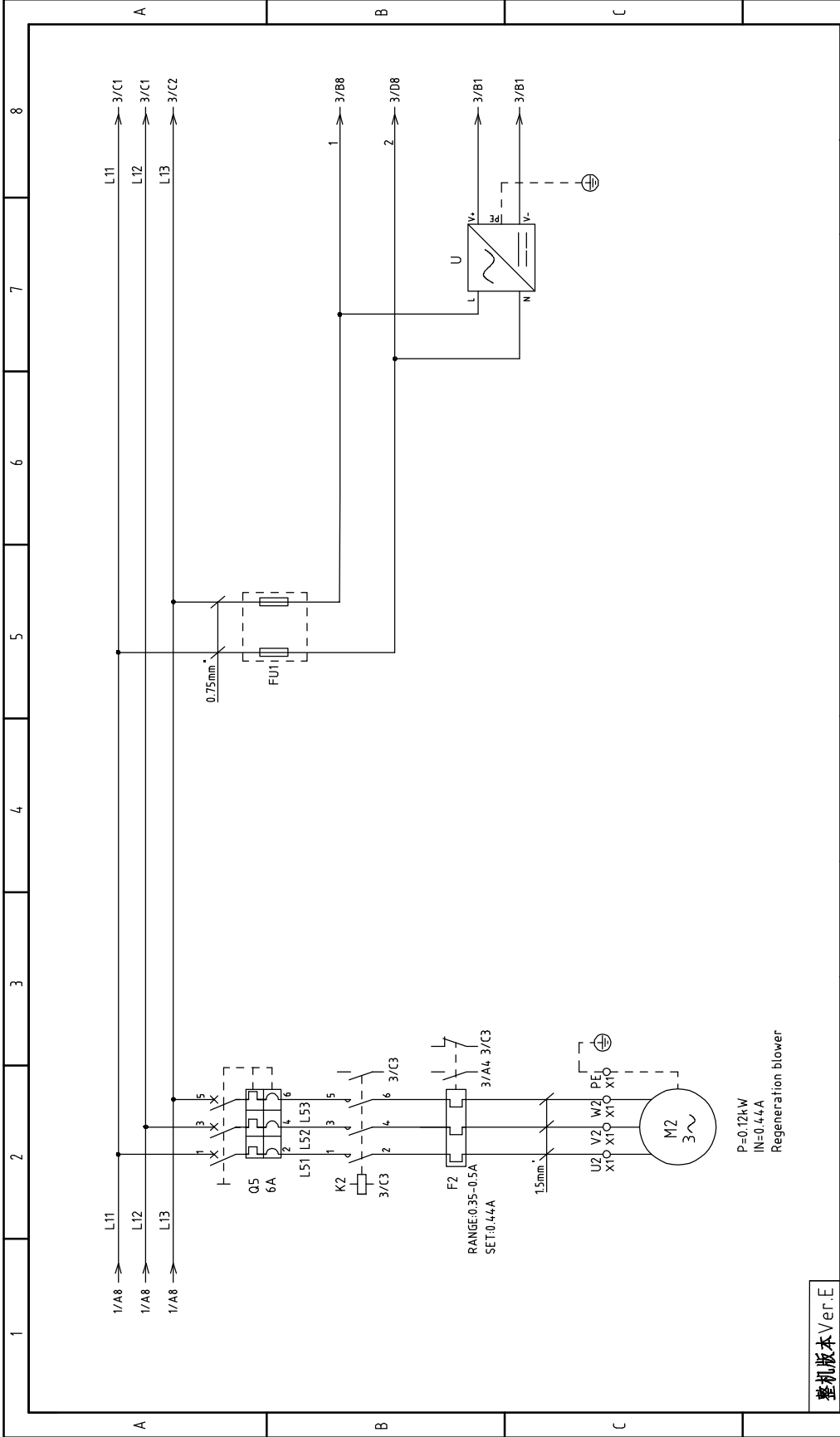


整机版本 Ver.E

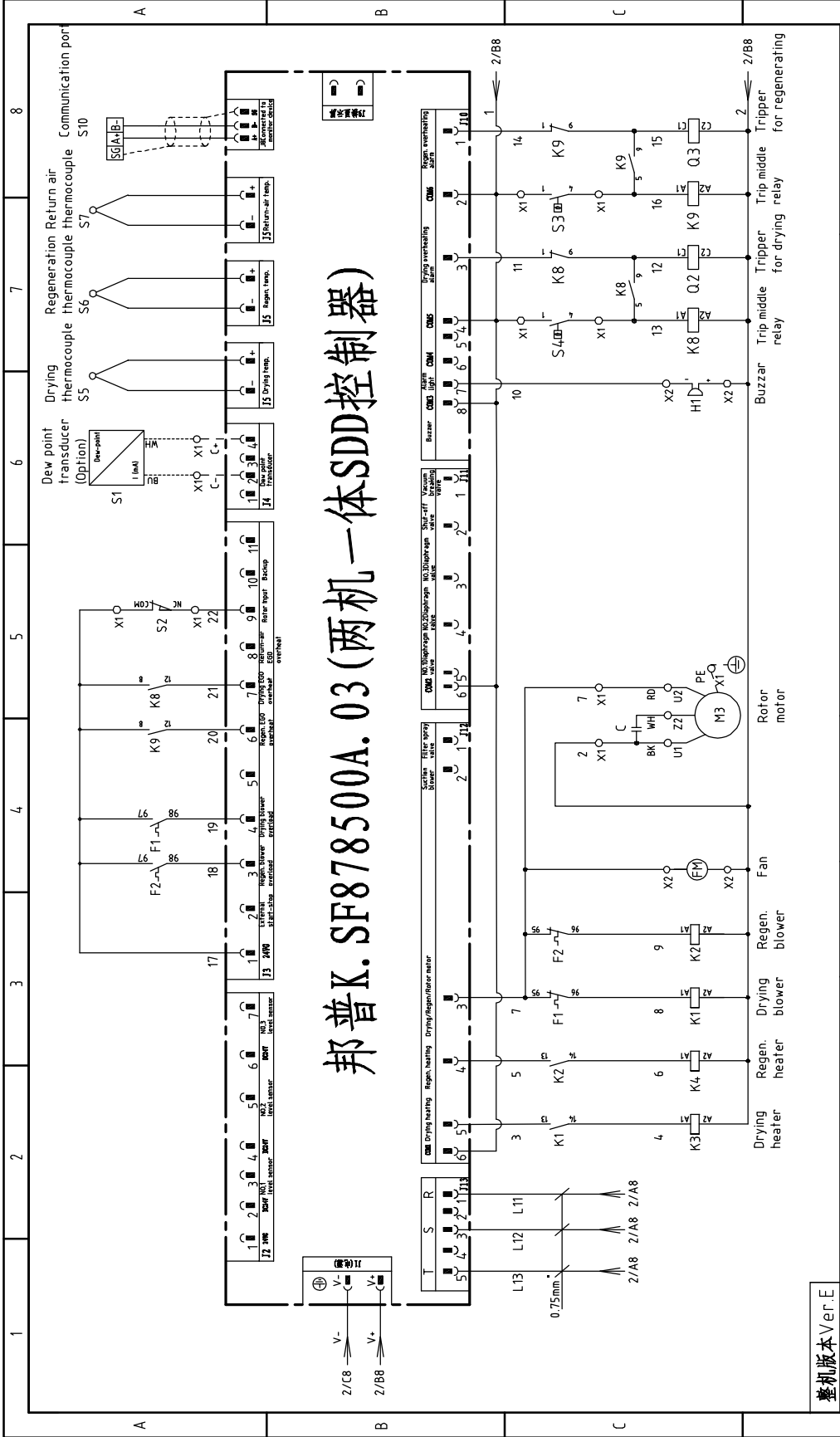
Mark	Before modification	Modified by	Modified date	Date	20171023	Checked by	Approved by	Version	H	Title	Drawing NO.		Page 1
	After modification	After modification	After modification								Standard	Scale	
SDD-40U(80U)/4.0H											Standard	CE	Totally 6
Main Circuit Diagram 1											SDD-40U(80U)/4.0H-CE-230V-H-1		Pages
SHINI											Voltage		230V
信易电热机械股份有限公司 Shini Plastics Technologies, Inc.											Frequency		50Hz
											Page 1		8



整机版本 Ver.E


Mark	Before modification	After modification	Modified by	Modify date	Checked by	Proofread by	Designer	Drawer	Version	H	Title	Drawing NO.	Scale	Page
											SDD-40U(80U)/40H Main Circuit Diagram 2	SDD-40U(80U)/40H-CE-230V-H-2	Standard CE	2
				20171023					Approved by	Date				Totally
														6
														Pages
														230V
														50HZ
														8





整机版本 Ver. E

1	2	3	4	5	6	7	8
Title				SDD-40U(80U)/40H			
Drawing NO.				SDD-40U(80U)/40H-CE-230V-H-3			
Scale				Standard			
Page				3			
Totally				6			
Pages				230V			
Voltage				50HZ			
Frequency				8			
SHINI				信易电热机械股份有限公司 Shini Plastics Technologies, Inc.			
Control Circuit Diagram				SDD-40U(80U)/40H			
Version				H			
Approved by				Date 20171023			
Designer				Date			
Proofread by				Date			
Checked by				Date			
Modified by				Date			
Before modification				Date			
After modification				Date			
Mark				Date			

1	2	3	4	5	6	7	8		
NO.	Symbol	Name	Manufacturer	Type	Specification	Number	Material number	Remark	
1	Q1	Main switch	EATON	P1-25/EA/SVB	25A	1	YE10125250000		
2	Q2 Q3	Circuit-breaker	TECO	BM-63C/3016S	16A	2	YE40301603000		
3	Q4 Q5	Excitation release	TECO	MX	220V 50/60Hz	2	YE40023560000	A	
4	K1	Circuit-breaker	TECO	BM-63C/3006S	6A	2	YE40300603000		
5	K2	Contactor	SIEMENS	3RT6015-1AN21	7A 1NO 220V 50/60Hz	1	YE00601521000		
6	K3	Contactor	SIEMENS	3RT6015-1AN21	7A 1NO 220V 50/60Hz	1	YE00601521000		
7	K4	Contactor	SIEMENS	3RT6018-1AN21	16A 1NO 220V 50/60Hz	1	YE00601800000		
8	K8 K9	Relay	WEIDMULLER	DRM270730LT	220V 50/60Hz	2	YE03270700000		
9	F1	Overload relay	SIEMENS	3RU6116-0FB0	0.35-0.5A	1	YE01161350000		
10	F2	Overload relay	SIEMENS	3RU6116-0FB0	0.35-0.5A	1	YE01161350000	B	
11	PCB	Controller	PUMP	K-SF878500A.03	230V 50/60Hz	1	YE80878500100		
12	U	DC power	MEAN WELL	ESA-35-24	OUT=DC24V 1.5A	1	YE71352400100		
13	FU1	Fuse base	CHINT	RT28-32	2P/32A/500V/10x38	1	YE41032200000		
14	H1	Fuse	CHINT	10x38 500V	2A	2	YE46002000100		
15	H1	Buzzer	HITPOINT	PK-35A	220V AC/DC	1	YE84003500200		
16	S1	Dew-point transducer	CS	CS 217-OEM	POWER=24VDC OUT=4-20mA	1	YE90021700100	(1)(2)	
17	S2	Position limit switch	TEND	YBLXW-5/11G2	250V 5(4)A	1	----	(1)	
18	S3 S4	Temperature protector	---	1: ±.MEG0	115-320 ℃; 55.13262.160	2	----	(1)	
19	S5 S6	Thermocouple	SHINI	-----	-----	2	----	(1)	
20	X1	Terminal board	HOLLEYWELL	4mm ²	-	15	YE60000403200		
21	X2	Terminal board	HOLLEYWELL	4mm ² PE	-	5	YE60000403500		
22	X3	Terminal board	HOLLEYWELL	2.5mm ²	-	8	YE60002503200		
23	X4	Terminal board	HOLLEYWELL	2.5mm ² PE	-	1	YE60002503400		
24	X5	Terminal board	HOLLEYWELL	2.5mm ²	-	2	YE60002503200	(2)	
整机版本 Ver.E Notes: (1)Means it's not the material inside the control box. (2)Stands for optional dew-point monitor									
			Drawer	Version	H	Title SDD-4.0U(80U)/4.0H		Scale	Page 5
			Designer	Approved by		SDD-4.0U(80U)/4.0H-CE-230V-H-5		Standard	Totally 6
			Proofread by	Checked by	Date	Electrical Components List 1		CE	Pages
			Modify date	20171023		 信易电热机械股份有限公司 Shini Plastics Technologies, Inc.		Voltage	230V
			Mark	Before modification	Modified by	Modify date		Frequency	50HZ
1	2	3	4	5	6	7	8		

1	2	3	4	5	6	7	8		
NO.	Symbol	Name	Manufacturer	Type	Specification	Number	Material number	Remark	
26	X2	Terminal board	HOLLEYWELL	2.5mm ^φ	-	4	YE60002503200		
27		Terminal board	HOLLEYWELL	2.5mm ^φ PE	-	1	YE60002503400		
28	FM	Fan	----	12x12CM	230V/50/60HZ 40W	1	-----	(1)	
29	M1	Blower 4"	SHINI	-----	0.12kW 200-24.0V 50/60HZ	1	-----	(1)	
30	M2	Blower 2.5"	SHINI	-----	0.12kW 200-24.0V 50/60HZ	1	-----	(1)	
31	M3	Motor	SHINI	3IK15GN-C-T/3GN-10XK/3GN-120K 220V 0.015kW		1	-----	(1)	
32	EH1	Pipe heater	SHINI	-----	4kW 230V	1	-----	(1)	
33	EH2	Pipe heater	SHINI	-----	3kW 230V	1	-----	(1)	
34		Terminal block E/GKseries(honeywell)	-----	-----	-----	4	YE60000003900		
								A	
								B	
								C	
								D	
整机版本 Ver.E Notes: (1)Means it's not the material inside the control box. (2)Stands for optional dew-point monitor									
			Drawer	Version	H	Title SDD-40U(80U)/40H		Scale	Page
			Designer	Approved by		SDD-40U(80U)/40H-CE-230V-H-6		Standard	Totally
			Proofread by	Checked by	Date	Electrical Components List 2		CE	6
			Modify date	Modified by	20171023	SHINI 信易电热机械股份有限公司 Shini Plastics Technologies, Inc.		Voltage	230V
			After modification	Modified by				Frequency	50HZ
			Before modification	Modified by					8

整机版本 Ver.E Notes: (1)Means it's not the material inside the control box. (2)Stands for optional dew-point monitor

Drawing NO.

Title SDD-40U(80U)/40H

Version H

Approved by

Date 20171023

Electrical Components List 2

Checked by

Modified by

Modified by

SDD-40U(80U)/40H-CE-230V-H-6

Standard

CE

Totally 6

Voltage

230V

Frequency

50HZ

SHINI

信易电热机械股份有限公司

Shini Plastics Technologies, Inc.

Page 6

Scale

Standard

CE

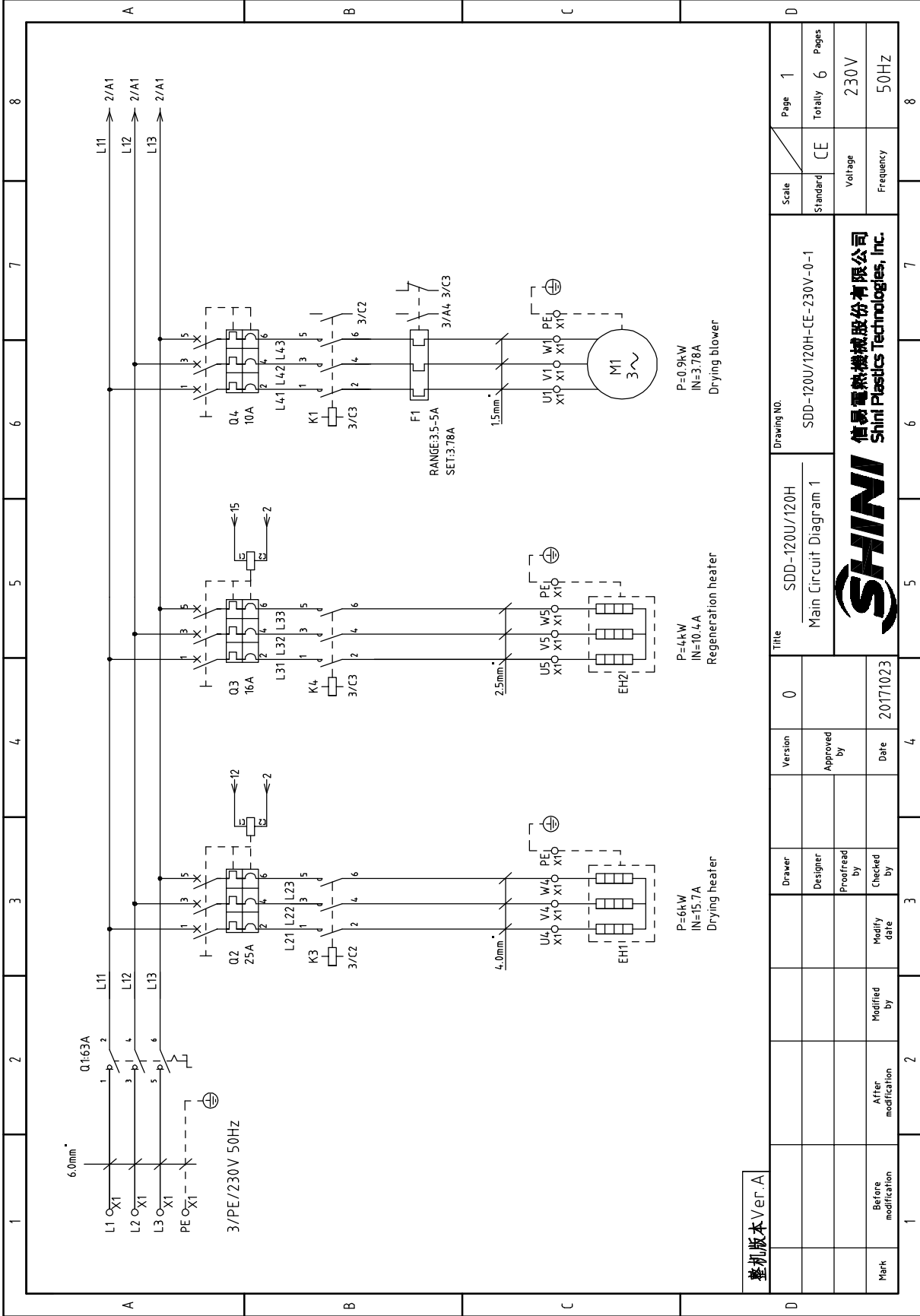
Totally 6

Voltage

230V

Frequency

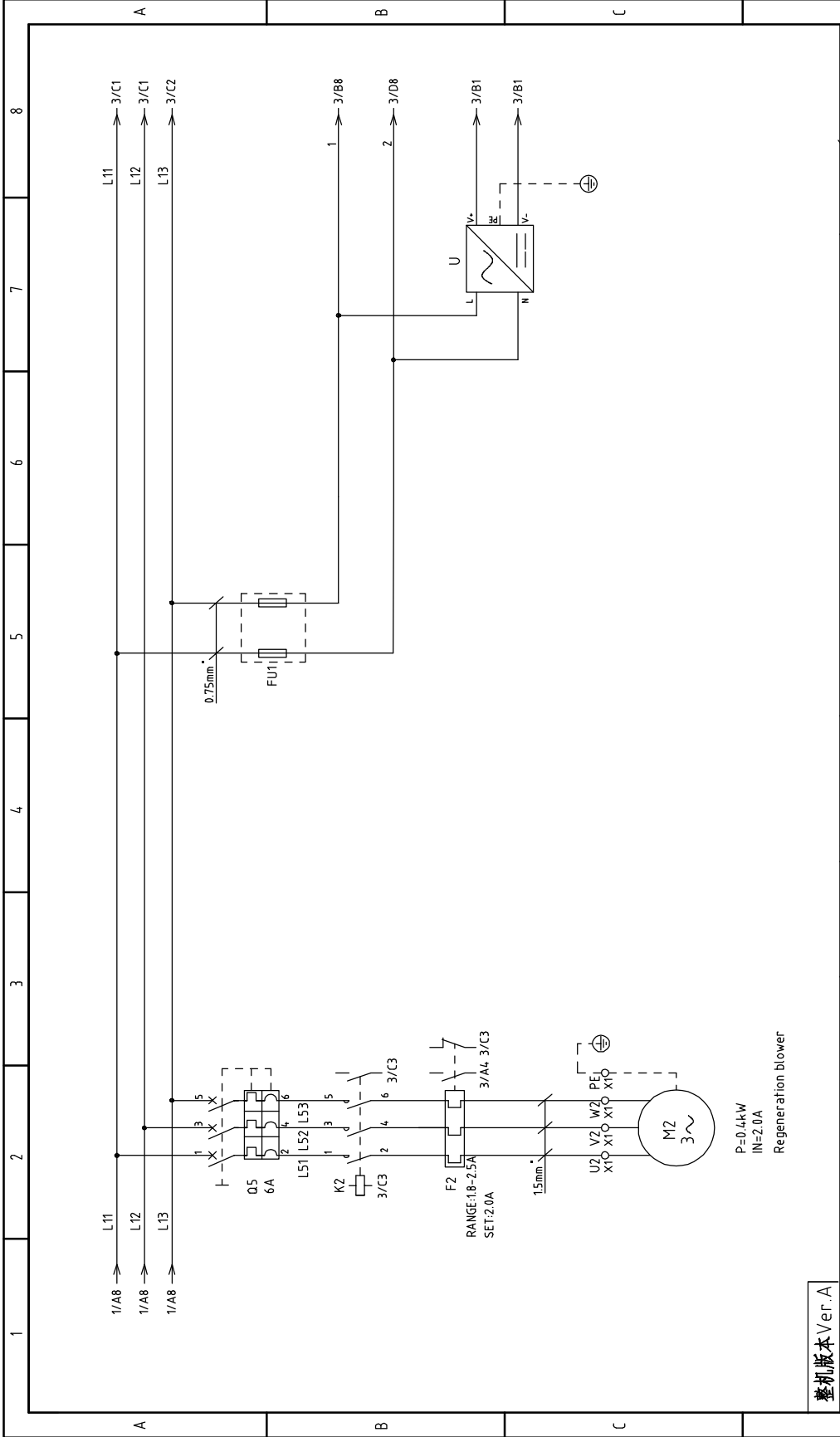
50HZ




整机版本 Ver.A

Mark	Before modification	Modified by	Modify date	Version	0	Title	SDD-120U/120H		Drawing NO.	SDD-120U/120H-CE-230V-0-1	Scale	Page 1
	After modification	Modified by	Modify date				Standard	CE				Totally 6
										Voltage	230V	
										Frequency	50Hz	

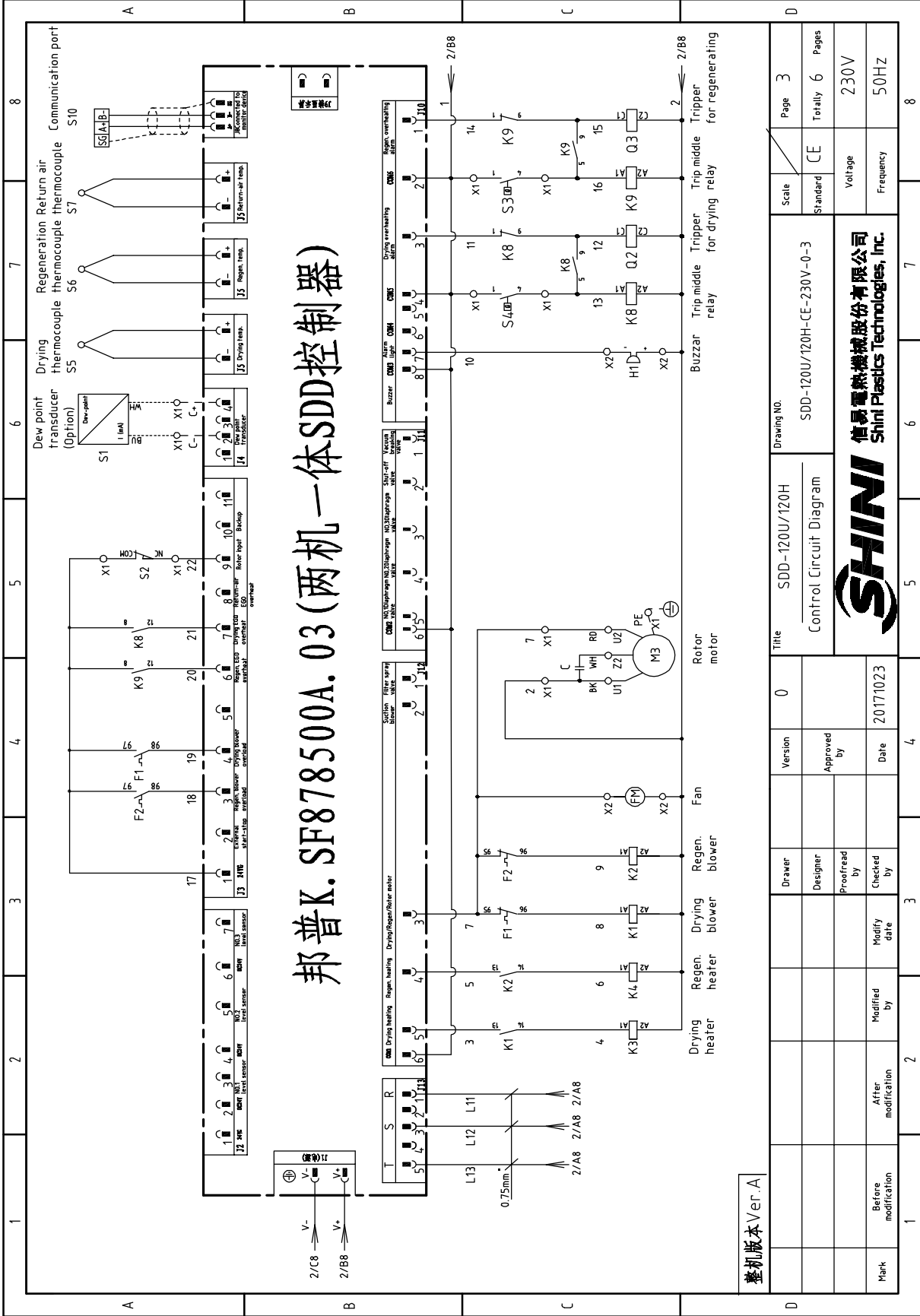
SHINI 信易电热机械股份有限公司
Shini Plastics Technologies, Inc.



整机版本 Ver. A

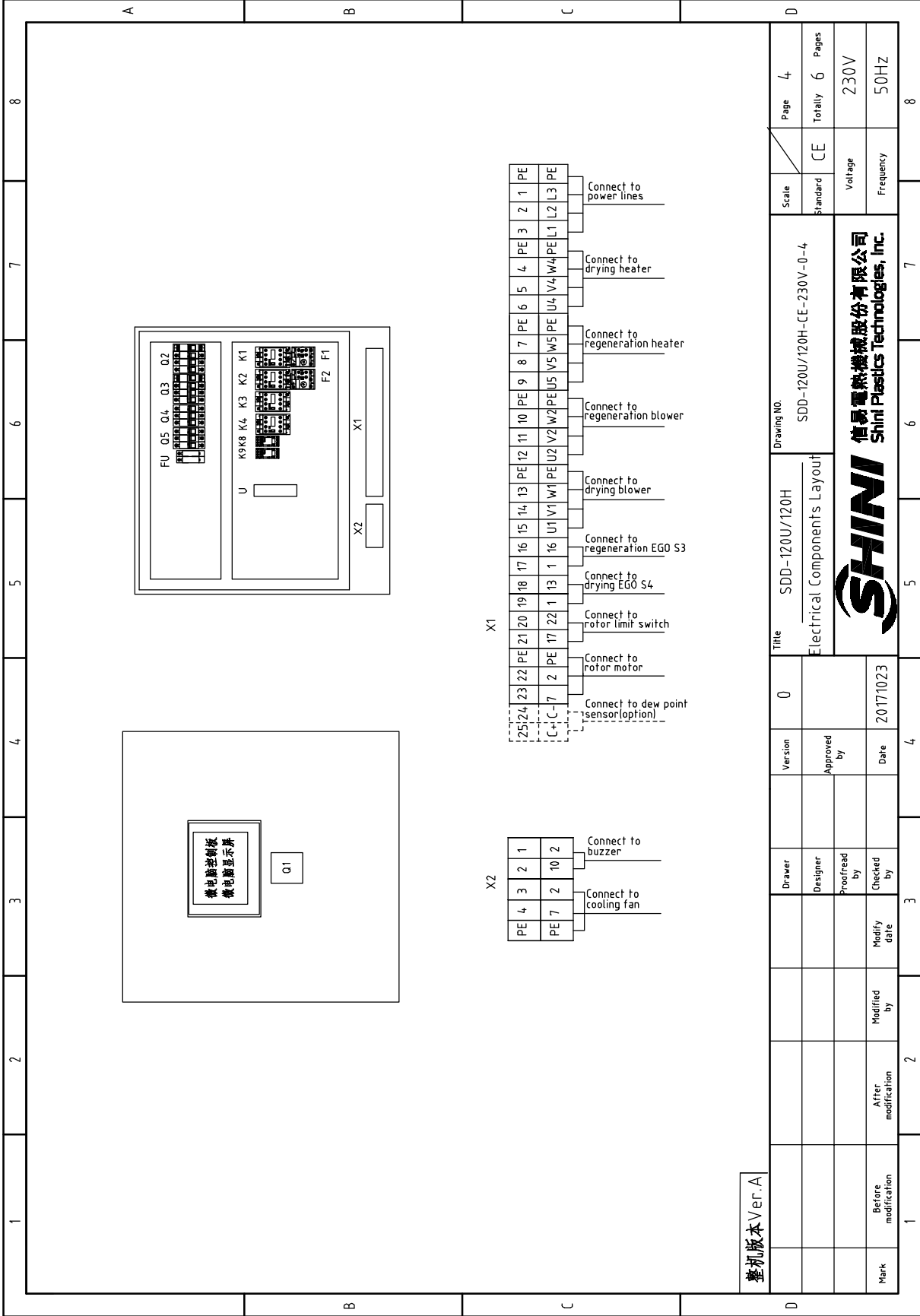
D	Mark	Before modification	Modified by	20171023	Version	0	Title	SDD-120U/120H	Drawing NO.	SDD-120U/120H-CE-230V-0-2	Scale	Page 2
		After modification	Modified date	20171023		Standard		CE		Totally 6		
 信易电热机械股份有限公司 Shini Plastics Technologies, Inc.												
											Voltage	230V
											Frequency	50HZ
											Page	8

邦普K. SF878500A. 03 (两机一体SDD控制器)



整机版本 Ver. A

1	2	3	4	5	6	7	8
Title		SDD-120U/120H		SDD-120U/120H-CE-230V-0-3		Page 3	
Version		0		Standard		Page 6	
Designer		Approved by		Voltage		230V	
Proofread by		Checked by		Frequency		50HZ	
Modify date		Date		SHINI		信易电热机械股份有限公司	
After modification		20171023		SHINI		Shini Plastics Technologies, Inc.	



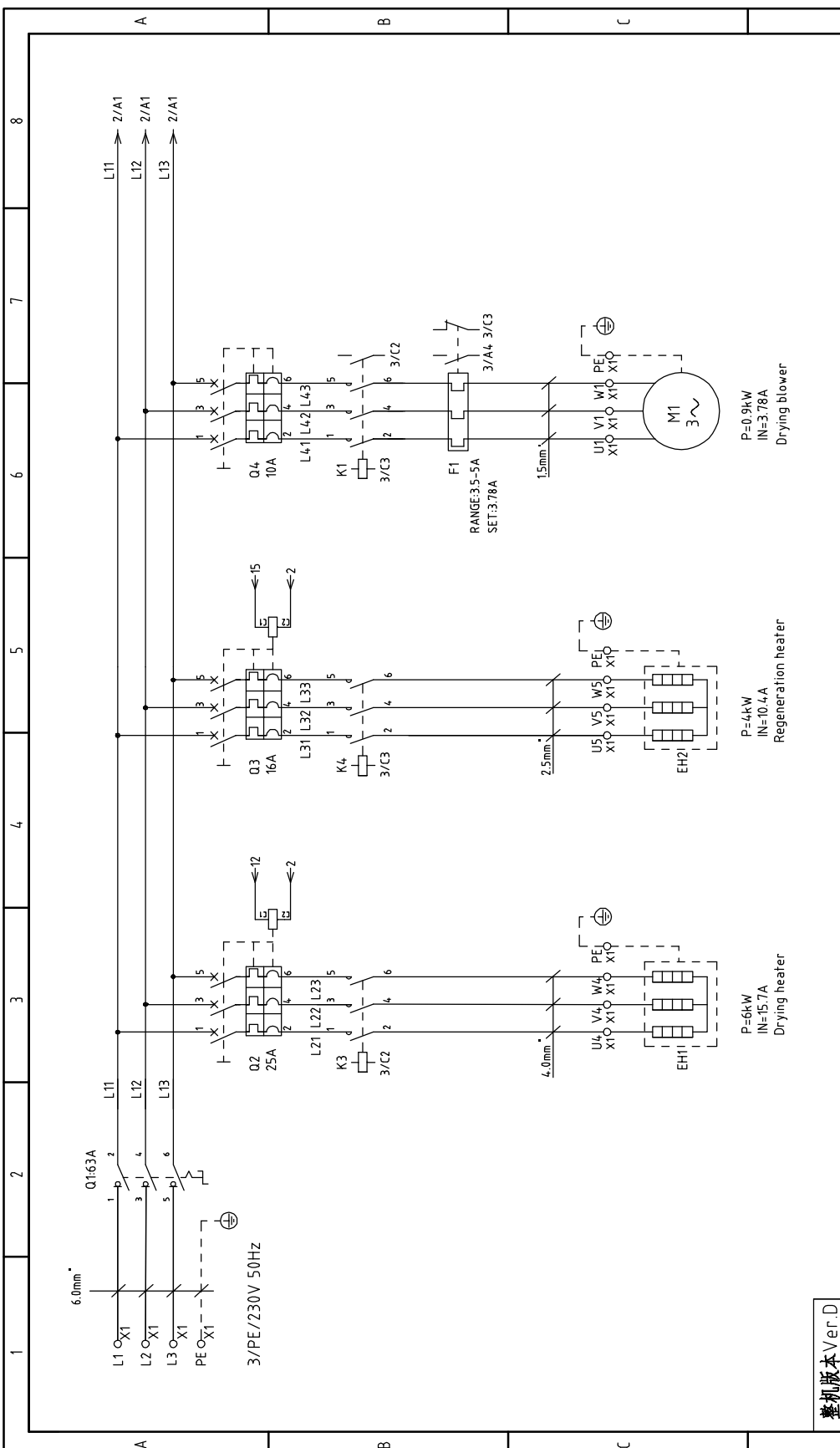
整机版本 Ver.A

Version	0	Version	SDD-120U/120H	Scale	4
Approved by		Approved by	Electrical Components Layout	Standard	CE
Date	20171023	Date		Voltage	230V
Checked by		Checked by		Frequency	50HZ
Modified by		Modified by		Page	4
After modification		After modification		Totally	6
Mark		Mark		Pages	

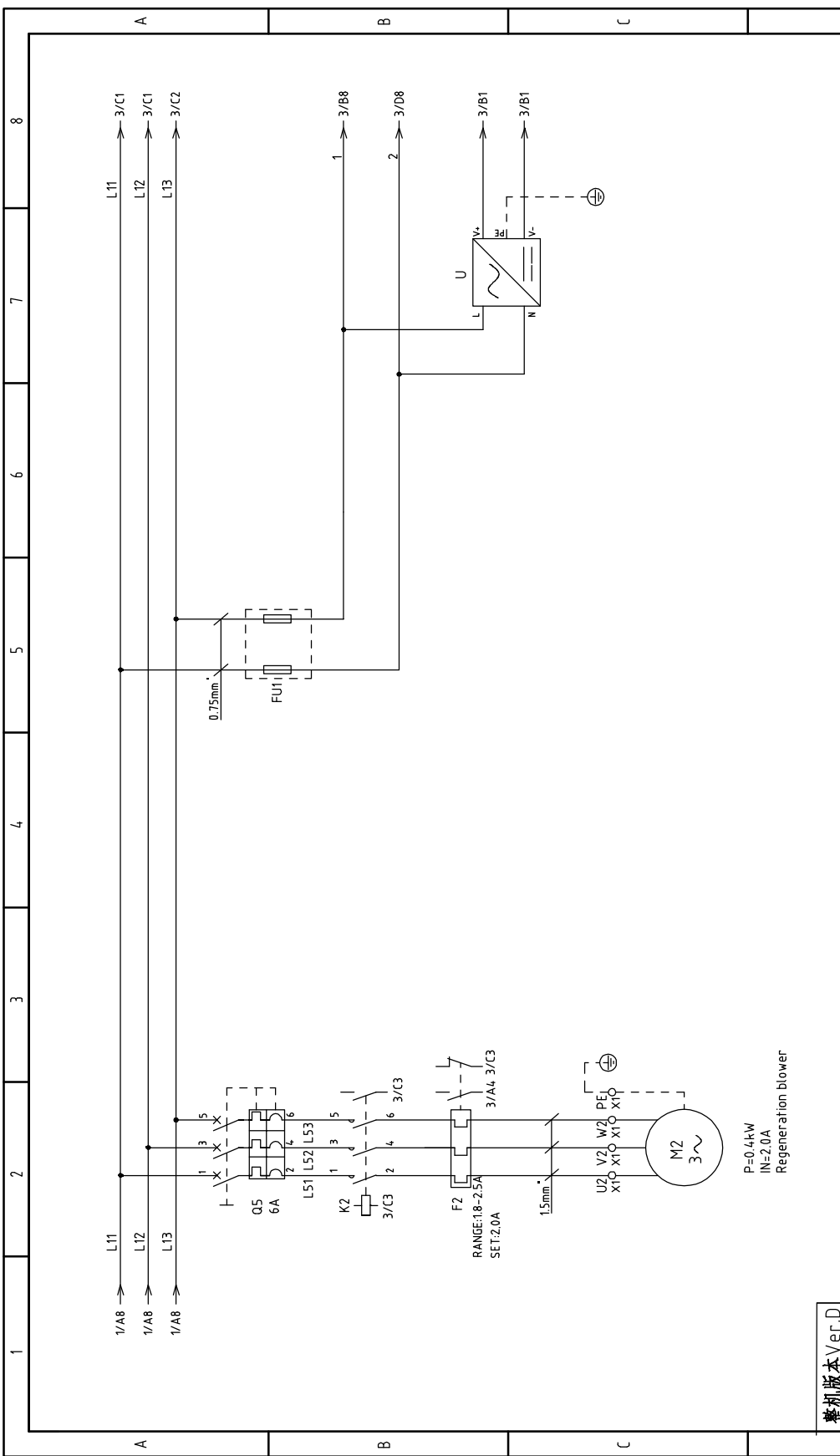
Drawing NO. SDD-120U/120H-CE-230V-0-4

SHINI 信易电热机械股份有限公司
Shini Plastics Technologies, Inc.

1		2		3		4		5		6		7		8	
NO.	Symbol	Name	Manufacturer	Type	Specification	Number	Material number	Remark							
1	Q1	Main switch	EATON	P3-63/EA/SVB 63A	63A	1	YE10636300000								
2	Q2	Circuit-breaker	TECO	BM-63C/3025S 3P	25A	1	YE40302503000								
3	Q3	Circuit-breaker	TECO	BM-63C/3016S 3P	16A	1	YE40301603000								
4		Excitation release	----	MX	230V 50/60Hz	2	YE40023560000								
5	Q4	Circuit-breaker	TECO	BM-63C/3010S 3P	10A	1	YE40301003000								
6	Q5	Circuit-breaker	TECO	BM-63C/3006S 3P	6A	1	YE40300603000								
7	K1	Contact	SIEMENS	3RT6016-1AN21	9A 1NO 220V 50/60Hz	1	YE00601621000								
8	K2	Contact	SIEMENS	3RT6015-1AN21	7A 1NO 220V 50/60Hz	1	YE00601521000								
9	K3	Contact	SIEMENS	3RT6026-1AN20	25A 220V 50/60Hz	1	YE00602622000								
10	K4	Contact	SIEMENS	3RT6018-1AN21	16A 1NO 220V 50/60Hz	1	YE00601800000								
11	K8 K9	Relay-Base	WEIDMULLER	DRM270730L T	220V 50/60Hz	2	YE03270700000								
12	F1	Overload relay	SIEMENS	3RU6116-1FB0	3.5-5A	1	YE01160350000								
13	F2	Overload relay	SIEMENS	3RU6116-1CB0	1.8-2.5A	1	YE01160180000								
14	PCB	Controller	PUMP	K.SF878500A.03	230V 50/60Hz	1	YE80878500100								
15	U	DC power	MEAN WELL	ESA-35-24	OUT=DC24 V 1.5A	1	YE17352400100								
16	FU1	Fuse base	CHINT	RT28-32	2P	1	YE41032200000								
17		Fuse	CHINT	10x38 500V	2A	2	YE46002000100								
18	H1	Buzzer	HITPOINT	PK-35A	220V AC/DC	1	YE84003500200								
19	S1	Dew-point transducer	CS	CS 217-OEM	POWER=24 VDC OUT=4-20mA	1	YE90021700100	(1)(2)							
20	S2	Position limit switch	---	YBLXW-5/11G2	250V 5(4)A	1	----	(1)							
21	S3 S4	Temperature protector	---	TECO	115-320* 55.13262.160	2	----	(1)							
22	S5 S6 S7	Thermocouple	SHINI	-----	-----	3	----	(1)							
23	X1	Terminal board	HOLLEYWELL	6mm ²	-	6	YE60000603200								
24		Terminal board	HOLLEYWELL	6mm ² PE	-	2	YE60000603500								
25		Terminal board	HOLLEYWELL	4mm ²	-	9	YE60000403200								
<p>整机版本 Ver.A Notes: (1)Means it's not the material inside the control box. (2)Stands for optional dew-point monitor</p>															
D		Title		SDD-120U/120H		Scale		Page		5		Standard		CE	
		Version		0		SDD-120U/120H-CE-230V-0-5		Voltage		230V		Frequency		50HZ	
Mark		Before modification		After modification		Modified by		Modify date		Checked by		Proofread by		Approved by	
								20171023							
		Designer		Approved by		Electrical Components List 1		Drawing NO.		SDD-120U/120H-CE-230V-0-5		Totally		6	
						SHINI		Shini Plastics Technologies, Inc.				Page		8	



整机版本 Ver.D		Title		Version		F		Drawing NO.		Scale		Page	
		SDD-160U(230U)/120H		Approved by				SDD-160U(230U)/120H-CE-230V-F-1		Standard		Page 1	
		Main Circuit Diagram 1		Checked by				CE		Voltage		Totally 6 Pages	
		Date		Date		Date		Frequency		230V		50HZ	
Mark		Before modification		After modification		Modify date		SHINI		信易电热机械股份有限公司		Shini Plastics Technologies, Inc.	
1		2		3		4		5		6		7	
A		B		C		D		8					

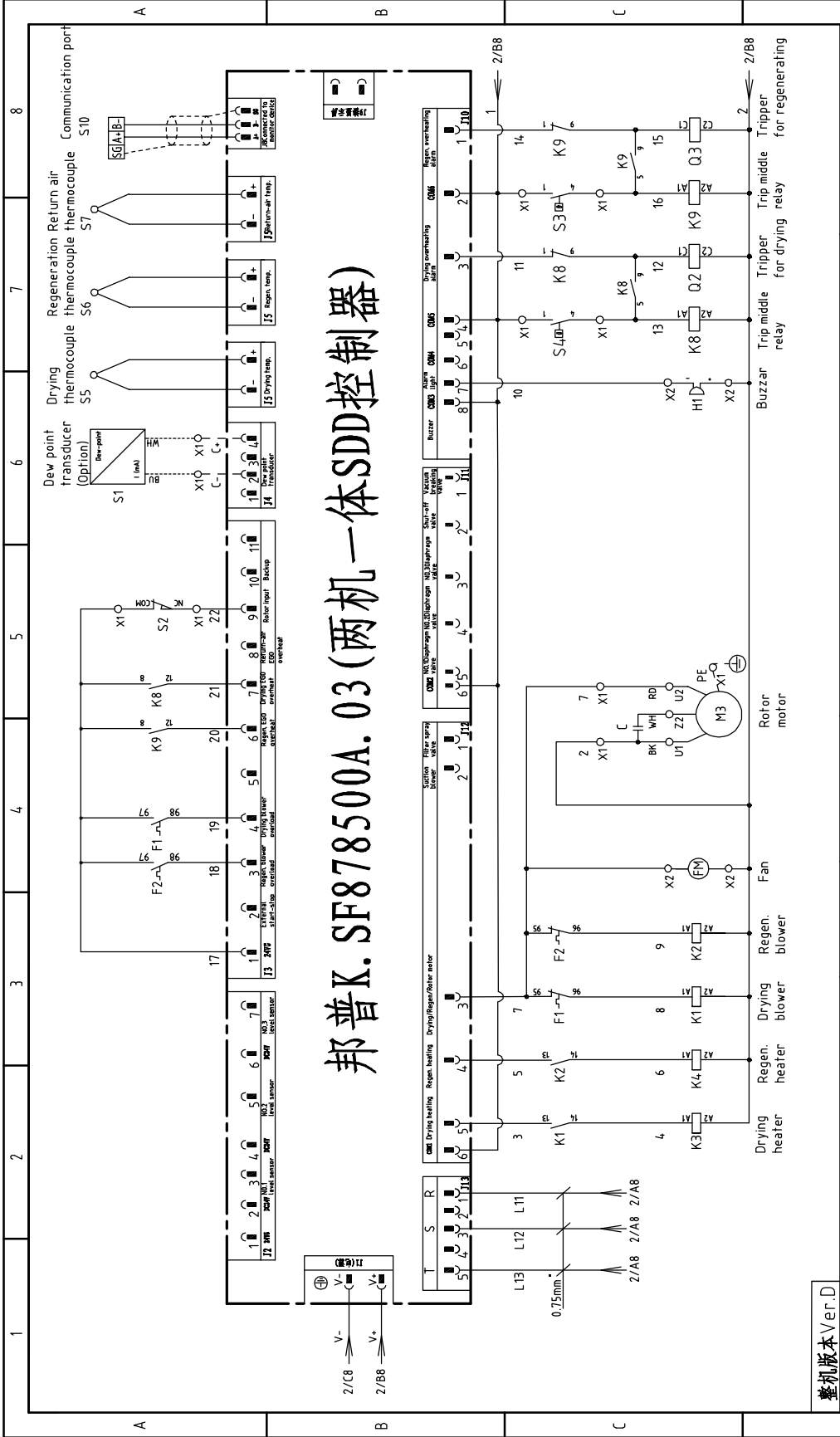


整机版本 Ver.D

1	2	3	4	5	6	7	8
Title				SDD-160U(230)/120H Main Circuit Diagram 2		Drawing NO.	
Version				F		Page 2	
Designer				Approved by		Standard CE	
Proofread by				Date 20171023		Totally 6 Pages	
Checked by				Modify date		Voltage 230V	
Mark				Before modification		Frequency 50HZ	
				After modification		8	
						Voltage 230V	
						Frequency 50HZ	

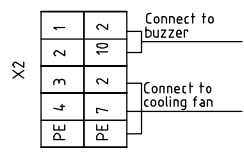
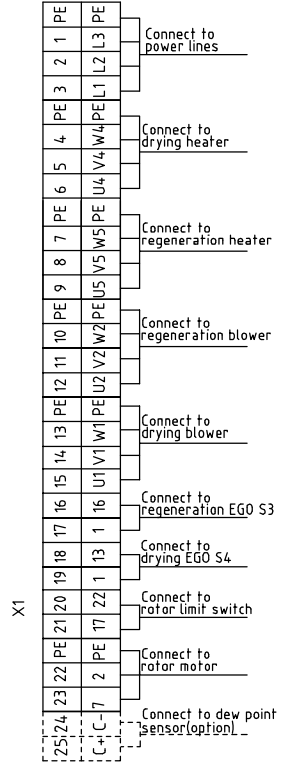
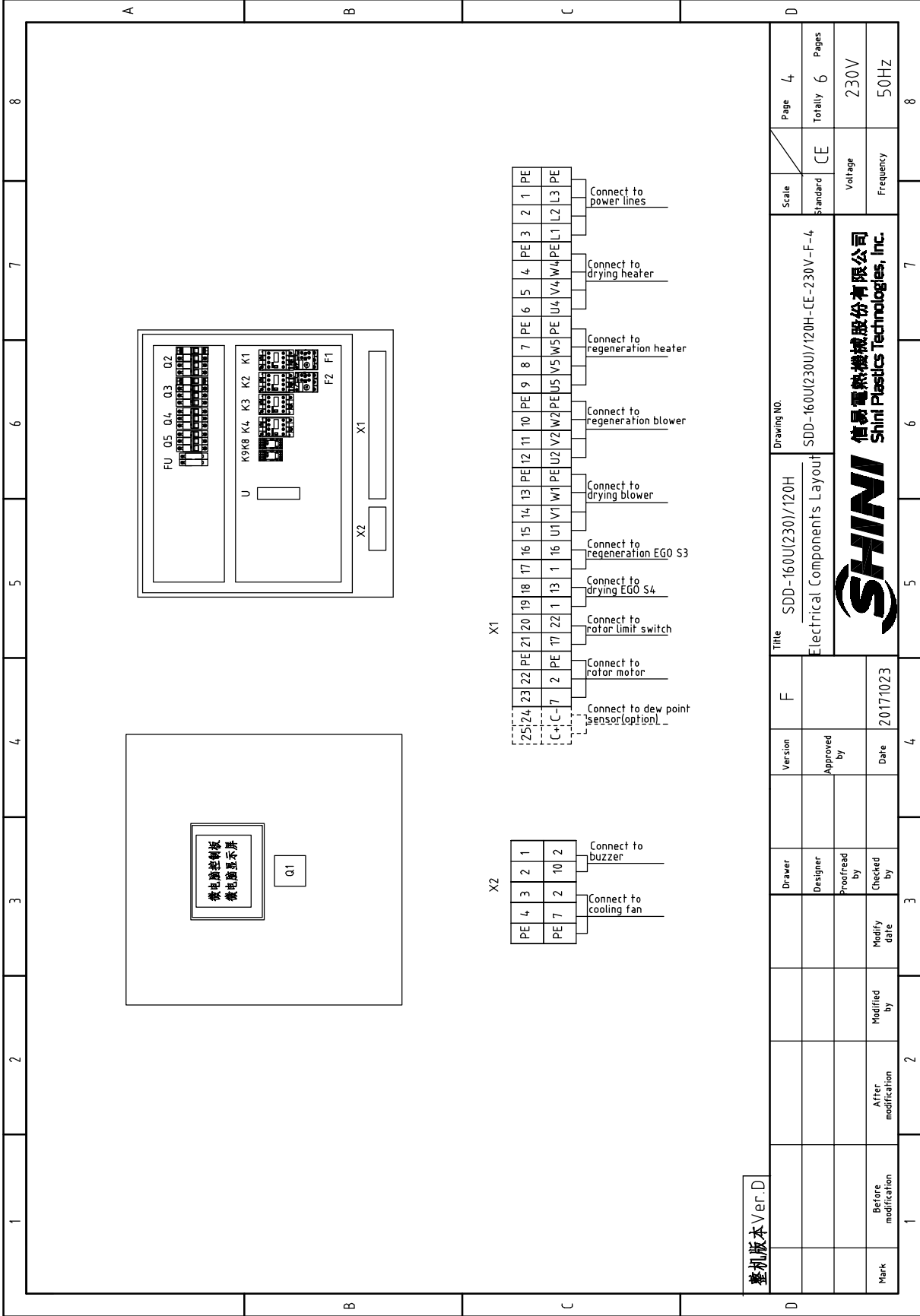
SHINI
信易电热机械股份有限公司
Shini Plastics Technologies, Inc.

邦普K.SF878500A.03 (两机一体SDD控制器)



整机版本 Ver.D

Drawing NO. SDD-160U(230U)/120H		Scale Standard		Page 3	
Title SDD-160U(230)/120H Control Circuit Diagram		Standard CE		Totally 6 Pages	
SHINI 信易电热机械股份有限公司 Shini Plastics Technologies, Inc.		Voltage 230V		Frequency 50HZ	
Drawer	Version	F			
Designer	Approved by				
Proofread by	Checked by	Date	20171023		
Modified by	Modify date				
Mark	Before modification	2	3	4	8



整机版本 Ver.D

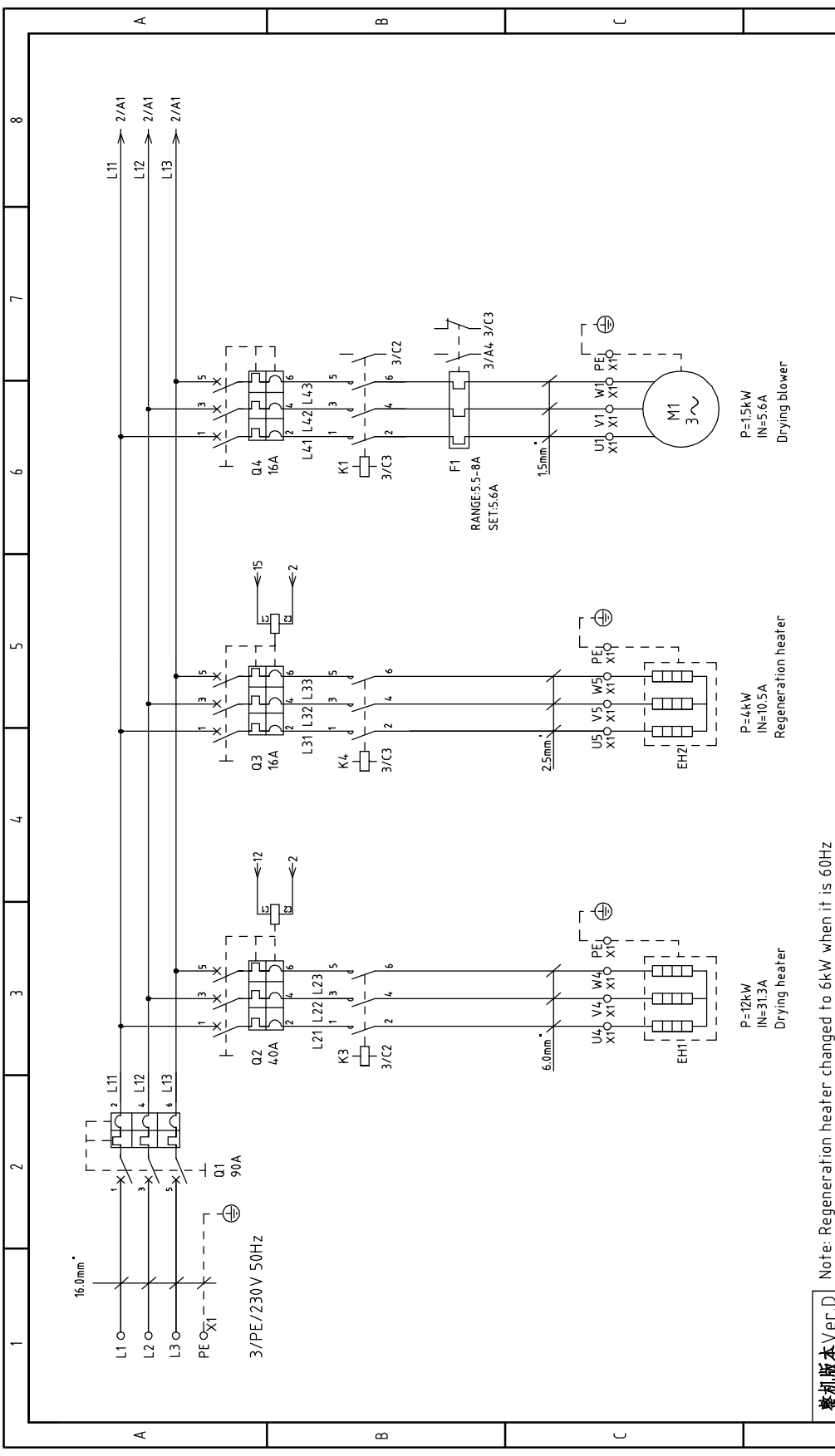
Mark	Before modification	Modified by	Modified date	Date	20171023	F	Version	Approved by	Title	SDD-160U(230U)/120H Electrical Components Layout	Drawing NO.	SDD-160U(230U)/120H-CE-230V-F-4	Scale	Page
	CE	4												
Mark	Before modification	Modified by	Modified date	Date	20171023	F	Version	Approved by	Title	SDD-160U(230U)/120H Electrical Components Layout	Drawing NO.	SDD-160U(230U)/120H-CE-230V-F-4	Standard	Totally
	CE	6												
Mark	Before modification	Modified by	Modified date	Date	20171023	F	Version	Approved by	Title	SDD-160U(230U)/120H Electrical Components Layout	Drawing NO.	SDD-160U(230U)/120H-CE-230V-F-4	Voltage	Pages
	CE	6	230V										8	
Mark	Before modification	Modified by	Modified date	Date	20171023	F	Version	Approved by	Title	SDD-160U(230U)/120H Electrical Components Layout	Drawing NO.	SDD-160U(230U)/120H-CE-230V-F-4	Frequency	Pages
	CE	6	50Hz										8	



1	2	3	4	5	6	7	8		
NO.	Symbol	Name	Manufacturer	Type	Specification	Number	Material number	Remark	
1	Q1	Main switch	EATON	P3-63/EA/SVB 63A	63A	1	YE10636300000		
2	Q2	Circuit-breaker	TECO	BM-63C/3025S 3P	25A	1	YE40302503000		
3	Q3	Circuit-breaker	TECO	BM-63C/3016S 3P	16A	1	YE40301603000		
4		Excitation release	----	MX	230V 50/60Hz	2	YE40023560000		
5	Q4	Circuit-breaker	TECO	BM-63C/3010S 3P	10A	1	YE40301003000		
6	Q5	Circuit-breaker	TECO	BM-63C/3006S 3P	6A	1	YE40300603000		
7	K1	Contact	SIEMENS	3RT6016-1AN21	9A 1NO 220V 50/60Hz	1	YE00601621000		
8	K2	Contact	SIEMENS	3RT6015-1AN21	7A 1NO 220V 50/60Hz	1	YE00601521000		
9	K3	Contact	SIEMENS	3RT6026-1AN20	25A 220V 50/60Hz	1	YE00602622000		
10	K4	Contact	SIEMENS	3RT6018-1AN21	16A 1NO 220V 50/60Hz	1	YE00601800000		
11	K8 K9	Relay-Base	WEIDMULLER	DRM270730L T	220V 50/60Hz	2	YE03270700000		
12	F1	Overload relay	SIEMENS	3RU6116-1FB0	3.5-5A	1	YE01160350000		
13	F2	Overload relay	SIEMENS	3RU6116-1CB0	1.8-2.5A	1	YE01160180000		
14	PCB	Controller	PUMP	K.SF878500A.03	230V 50/60Hz	1	YE80878500100		
15	U	DC power	MEAN WELL	ESA-35-24	OUT=DC24 V 1.5A	1	YE17352400100		
16	FU1	Fuse base	CHINT	RT28-32	2P	1	YE41032220000		
17		Fuse	CHINT	10x38 500V	2A	2	YE46002000100		
18	H1	Buzzer	HITPOINT	PK-35A	220V AC/DC	1	YE84003500200		
19	S1	Micro switch	CS	CS Z17-OEM	POWER=24 VDC OUT=4-20mA	1	YE90021700100	(1)(2)	
20	S2	Position limit switch	---	YBLXW-5/11G2	250V 5(4)A	1	----	(1)	
21	S3 S4	Temperature protector	---	TECO	115-320* 55.13262.160	2	----	(1)	
22	S5 S6 S7	Thermocouple	SHINI	-----	-----	3	----	(1)	
23	X1	Terminal board	HOLLEYWELL	6mm ³	-	6	YE60000603200		
24		Terminal board	HOLLEYWELL	6mm ³ PE	-	2	YE60000603500		
25		Terminal board	HOLLEYWELL	4mm ³	-	9	YE60000403200		
整机版本 Ver.D Notes: (1)Means it's not the material inside the control box. (2)Stands for optional dew-point monitor									
			Drawer	Version	Title		Scale		
			Designer	F	SDD-160U(230U)/120H		Drawing NO.		
			Proofread by	Approved by	SDD-160U(230U)/120H-CE-230V-F-5		Standard		
			Checked by	Date	Electrical Components List 1		CE		
			Modify date	20171023			Voltage		
			Modified by				Frequency		
			After modification				230V		
			Before modification				50HZ		
						Page		5	
						Totally		6	
						Pages		8	

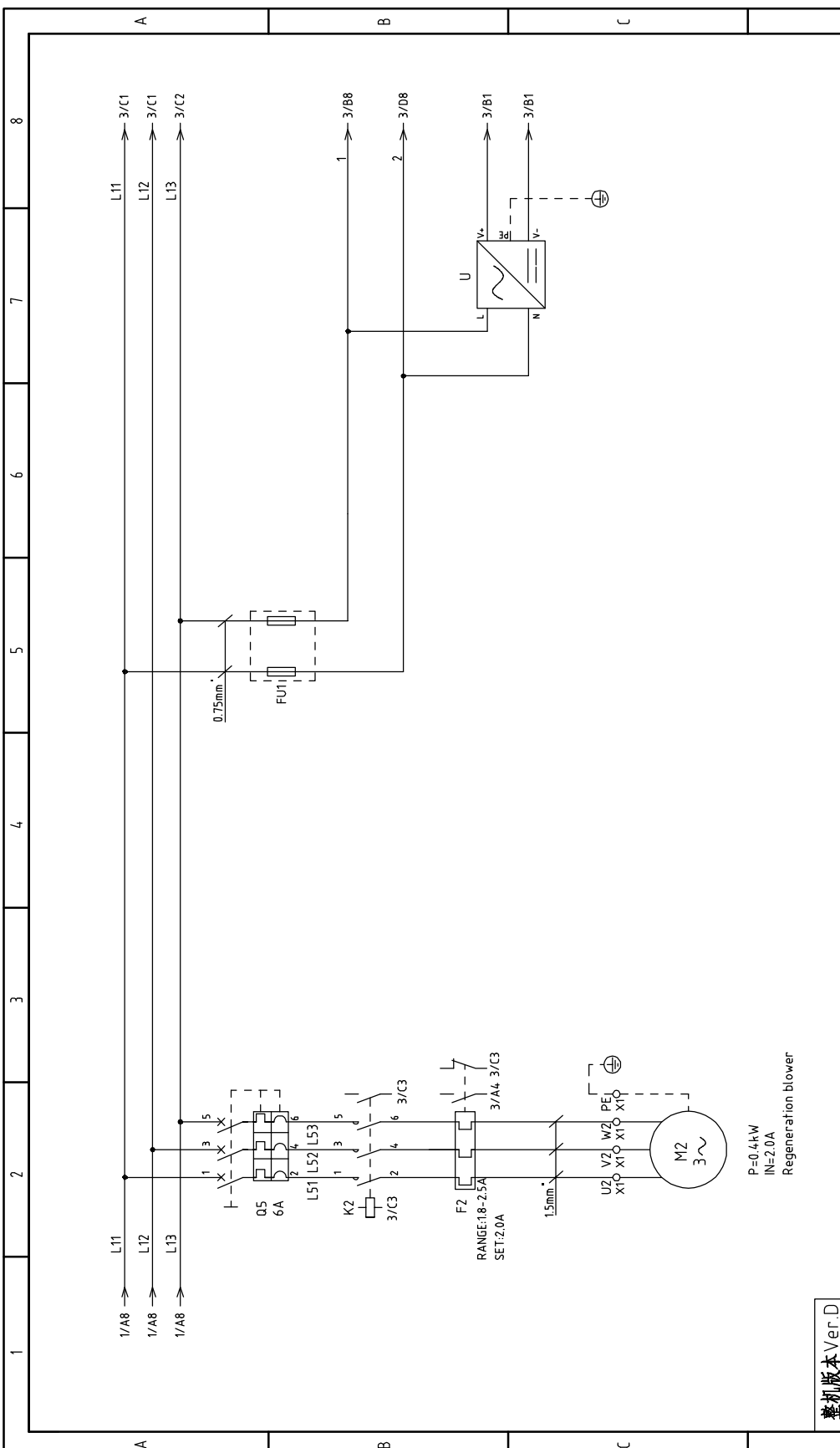


信易电热机械股份有限公司
Shini Plastics Technologies, Inc.



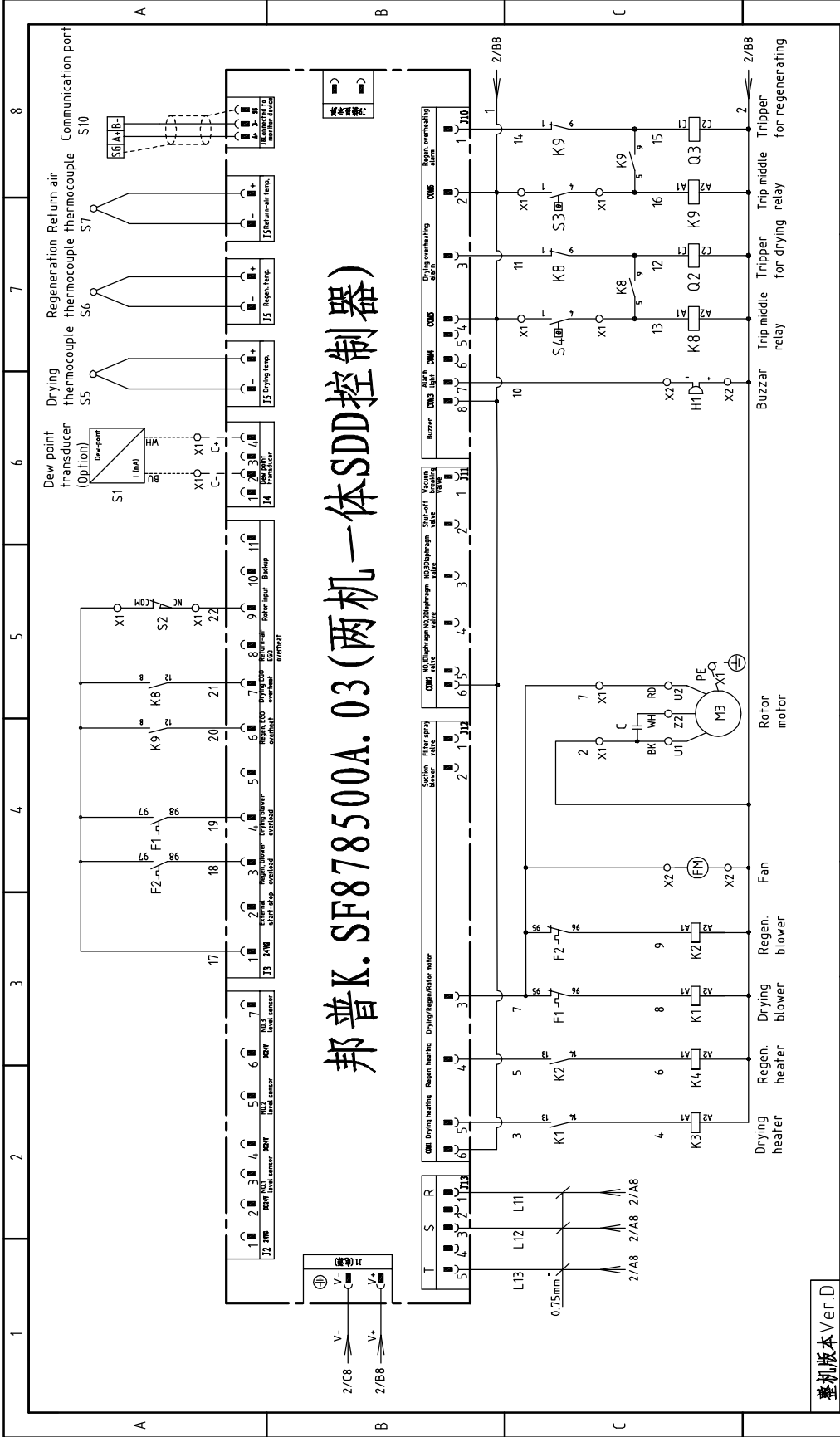
整机版本 Ver.D	Note: Regeneration heater changed to 6kW when it is 60Hz			Title		Drawing NO.		Scale		Page	
	Designer	Version	F	SDD-300U(450U)/200H		SDD-300U(450U)/200H-CE-230V-F-1		Standard	CE	Totally	6
Proofread by	Approved by			Main Circuit Diagram 1						Voltage	230V
Checked by	Date			20170929						Frequency	50Hz
Modified by	Modify date										
Before modification	After modification										
1	2	3	4	5	6	7	8				





整机版本 Ver.D

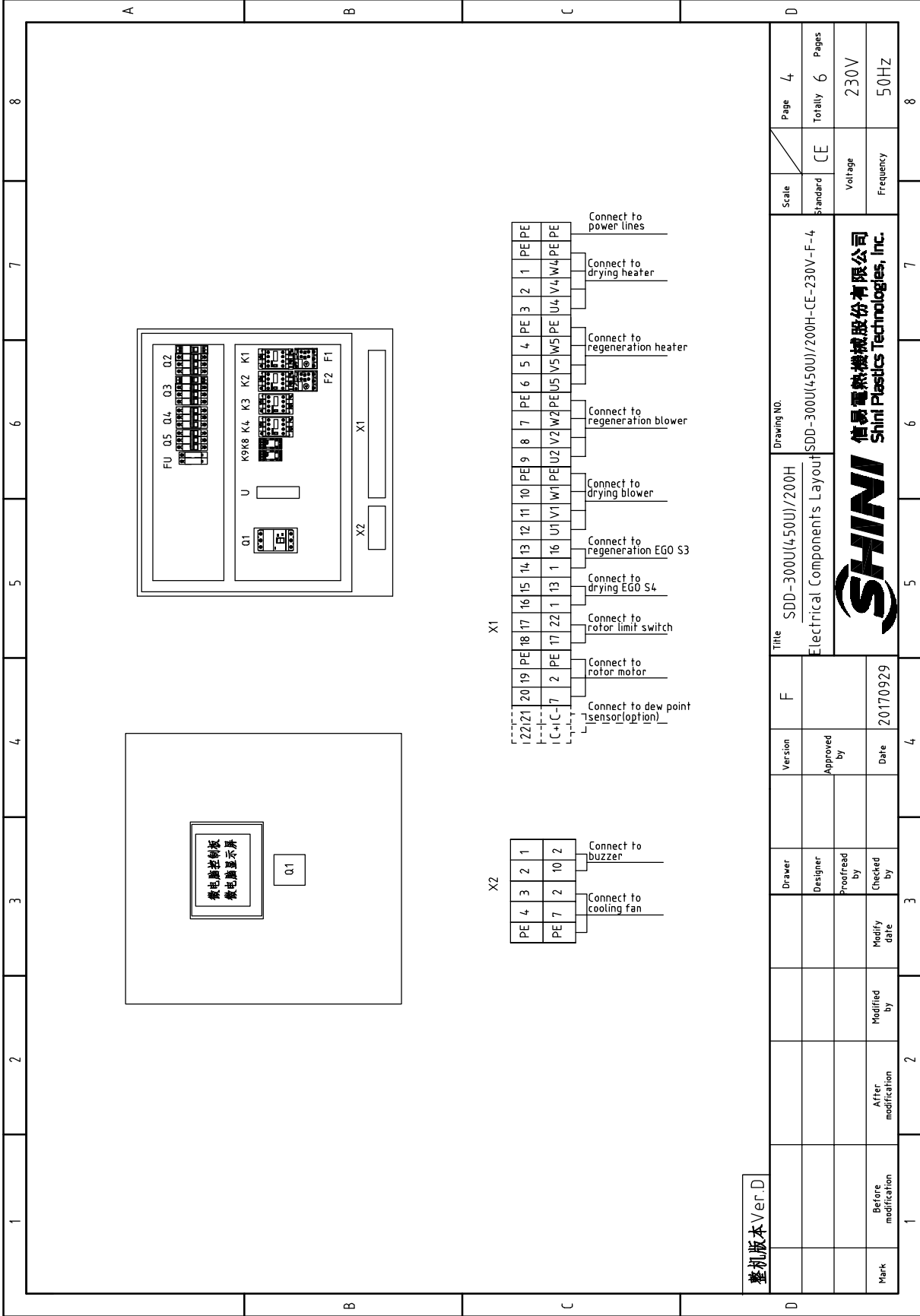
1	2	3	4	5	6	7	8
Title			Version		Drawing NO.		Page 2
SDD-300U(4.50U)/200H. Main Circuit Diagram 2			F		SDD-300U(4.50U)/200H-CE-230V-F-2		Scale Standard
SHINI 信易电热机械股份有限公司 Shini Plastics Technologies, Inc.			Approved by		CE		Totally 6 Pages
Date 20170929			Checked by		Voltage 230V		Frequency 50Hz
Modified by			Modify date		8		
Before modification			After modification				



邦普K.SF878500A.03 (两机一体SDD控制器)

整机版本 Ver.D

1	2	3	4
5	6	7	8
Title SDD-300U(450U)/200H		Scale	
Control Circuit Diagram		Standard	
Drawing NO. SDD-300U(450U)/200H-CE-230V-F-3		Page 3	
SHINI 信易电热机械股份有限公司 Shini Plastics Technologies, Inc.		Voltage 230V	
Date 20170929		Frequency 50HZ	
Mark Before modification		Totally 6 Pages	
After modification		CE	



整机版本 Ver.D

Mark	Before modification	Modified by	Modified date	Checked by	Date	20170929
Designer	Proofread by	Approved by	Version	F	Title SDD-300U(450U)/200H Electrical Components Layout	
Scale	Standard	CE	Page	4	Drawing NO. SDD-300U(450U)/200H-CE-230V-F-4	
Frequency	230V	Voltage	Totally	6	Pages	
50Hz	50Hz	Frequency	230V	6	Voltage	
8	8	8	8	8	8	




X2

PE 4	3	2	1	Connect to cooling fan
PE 7	2	10	2	Connect to buzzer

X1

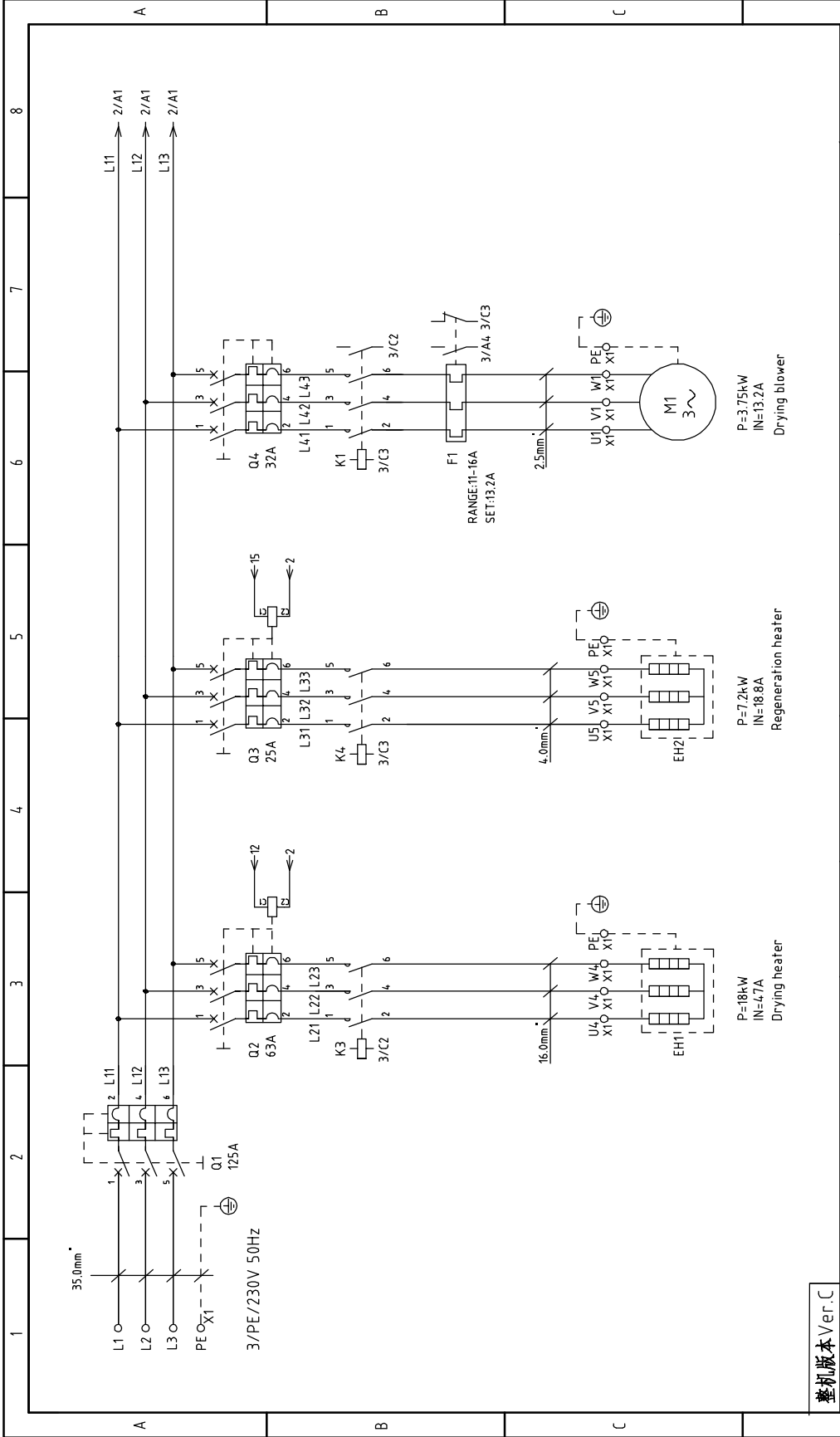
122	21	20	19	PE	18	17	16	15	14	13	12	11	10	PE	9	8	7	PE	6	5	4	PE	3	2	1	PE	PE	Connect to power lines		
1	2	3	4	5	6	7	8	9	10	11	12	13	14	15	16	17	18	19	20	21	22	23	24	25	26	27	28	29	30	Connect to drying heater
1	2	3	4	5	6	7	8	9	10	11	12	13	14	15	16	17	18	19	20	21	22	23	24	25	26	27	28	29	30	Connect to regeneration heater
1	2	3	4	5	6	7	8	9	10	11	12	13	14	15	16	17	18	19	20	21	22	23	24	25	26	27	28	29	30	Connect to regeneration blower
1	2	3	4	5	6	7	8	9	10	11	12	13	14	15	16	17	18	19	20	21	22	23	24	25	26	27	28	29	30	Connect to drying blower
1	2	3	4	5	6	7	8	9	10	11	12	13	14	15	16	17	18	19	20	21	22	23	24	25	26	27	28	29	30	Connect to regeneration EGO S3
1	2	3	4	5	6	7	8	9	10	11	12	13	14	15	16	17	18	19	20	21	22	23	24	25	26	27	28	29	30	Connect to drying EGO S4
1	2	3	4	5	6	7	8	9	10	11	12	13	14	15	16	17	18	19	20	21	22	23	24	25	26	27	28	29	30	Connect to rotor limit switch
1	2	3	4	5	6	7	8	9	10	11	12	13	14	15	16	17	18	19	20	21	22	23	24	25	26	27	28	29	30	Connect to rotor motor
1	2	3	4	5	6	7	8	9	10	11	12	13	14	15	16	17	18	19	20	21	22	23	24	25	26	27	28	29	30	Connect to dew point sensor (option)

1	2	3	4	5	6	7	8	
NO.	Symbol	Name	Manufacturer	Type	Specification	Number	Material number	Remark
1	Q1	Breaker interlock	ABB	A1A125TMF90	90A	1	YE41109200000	
2	Q2	Circuit-breaker	TECO	BM-63C/3040S 3P	40A	1	YE40304003000	
3	Q3 Q4	Circuit-breaker	TECO	BM-63C/3016S 3P	16A	2	YE40301603000	
4	Q5	Circuit-breaker	TECO	BM-63C/3006S 3P	6A	1	YE40300603000	
5		Excitation release	CHINT	MX	220V 50/60Hz	2	YE40023560000	
6	K1	Contact	SIEMENS	3RT6016-1AN21	9A 1NO 220V 50/60Hz	1	YE00601621000	
7	K2	Contact	SIEMENS	3RT6016-1AN21	9A 1NO 220V 50/60Hz	1	YE00601621000	
8	K3	Contact	SIEMENS	3RT6028-1AN21	38A 220V 50/60Hz	1	YE00602822000	
9	K4	Contact	SIEMENS	3RT6018-1AN21	16A 220V 50/60Hz	1	YE00601800000	
10	K8 K9	Relay	WEIDMULLER	DRM270730LT	220V 50/60Hz	2	YE03270700000	
11	F1	Overload relay	SIEMENS	3RU6116-1HB0	5.5-8A	1	YE01160550000	
12	F2	Overload relay	SIEMENS	3RU6116-1CB0	1.8-2.5A	1	YE01160180000	
13	PCB	Controller	***	K.SF878500A.03	-----	1	YE80878500100	
14	U	DC power	MEAN WELL	ESA-35-24	OUT=DC24V 1.5A	1	YE71352400100	
15	FU1	Fuse base	CHINT	RT28-32	2P	1	YE41032200000	
16		Fuse	CHINT	10*38 500V	2A	2	YE46002000100	
17	H1	Buzzer	HITPOINT	PK-35A	220VAC	1	YE84003500200	
18	S1	Dew-point transducer	CS	CS 217-0EM	POWER=24VDC OUT=4-20mA	1	YE90021700100	(1)(2)
19	S2	Micro switch	TEND	YBLXW-5/11G2	250V 5(A)	1	----	(1)
20	S3	Temperature protector	EGO	---	115-320 °C	1	----	(1)
21	S4	Temperature protector	EGO	---	115-320 °C	1	----	(1)
22	S5	Thermocouple	SHINI	ST-K	K	1	----	(1)
23	S6 S7	Thermocouple	SHINI	ST-K	K	2	----	(1)
24	X1	Terminal board	HOLLEYWELL	16mm ² PE	-	1	YE60001603500	
25		Terminal board	HOLLEYWELL	6mm ²	-	3	YE60000603200	
整机版本 Ver.D Notes: (1)Means it's not the material inside the control box. (2)Stands for optional dew-point monitor								
			Drawer	Version	Title		Scale	Page
			Designer	Approved by	SDD-300U(450U)/200H		Standard	5
			Proofread by	Date	SDD-300U(450U)/200H-CE-230V-F-5		CE	Totally
			Checked by	20170929	Electrical Components List 1		CE	6
			Modify date		 信易电热机械股份有限公司 Shini Plastics Technologies, Inc.		Voltage	230V
			Modified by				Frequency	50HZ
1	2	3	4	5	6	7	8	

1		2		3		4		5		6		7		8		
NO.	Symbol	Name	Manufacturer	Type	Specification	Number	Material number	Remark								
26		Terminal board	HOLLEYWELL	6mm ^φ PE	-	1	YE60000603500									
27		Terminal board	HOLLEYWELL	4mm ^φ	-	9	YE60000403200									
28		Terminal board	HOLLEYWELL	4mm ^φ PE	-	3	YE60000403500									
29		Terminal board	HOLLEYWELL	2.5mm ^φ	-	8	YE600002503200									
30		Terminal board	HOLLEYWELL	2.5mm ^φ PE	-	1	YE600002503400									
31		Terminal board	HOLLEYWELL	2.5mm ^φ	-	2	YE600002503200	(2)								
32	X2	Terminal board	HOLLEYWELL	2.5mm ^φ	-	4	YE600002503200									
33		Terminal board	HOLLEYWELL	2.5mm ^φ PE	-	1	YE600002503400									
34	FM	Fan	SUNON	DP-200A	230VAC 4.0W	1	-----	(1)								
35	M1	Blower	SHINI	-----	230V 1.5kW	1	-----	(1)								
36	M2	Blower	SHINI	-----	230V 0.4kW	1	-----	(1)								
37	M3	Motor	----	-----	230V 0.006kW	1	-----	(1)								
38	EH1	Pipe heater	SHINI	-----	230V 12kW	1	-----	(1)								
39	EH2	Pipe heater	SHINI	-----	230V 4kW	1	----- 50Hz机型	(1)								
40	EH2	Pipe heater	SHINI	-----	230V 6kW	1	----- 60Hz机型	(1)								
40	S10	Communication interface board RS-485 (double Dsub-9pin connector)	--	--	--	1	YE90048501200									
41		Shell RS485(SAL-700G-A-19J0)	--	--	--	1	YR40048500000									
42		Terminal block E/GKseries(honeywell)			PCS	5	YE600000003900									
C																
D																
整机版本 Ver.D Notes: (1)Means it's not the material inside the control box. (2)Stands for optional dew-point monitor																
				Drawer	Version	F	Title SDD-300U(450U)/200H Electrical Components List 2				Drawing NO. SDD-300U(450U)/200H-CE-230V-F-6		Scale	Page	6	
				Designer	Approved by						Standard	CE	Totally	6	Pages	
				Proofread by							Voltage		230V			
				Checked by	Date	20170929					Frequency		50HZ			
Mark	Before modification	After modification	Modified by	Modify date												
1	2	3	4	5	6	7										8



信易电热机械股份有限公司
Shini Plastics Technologies, Inc.



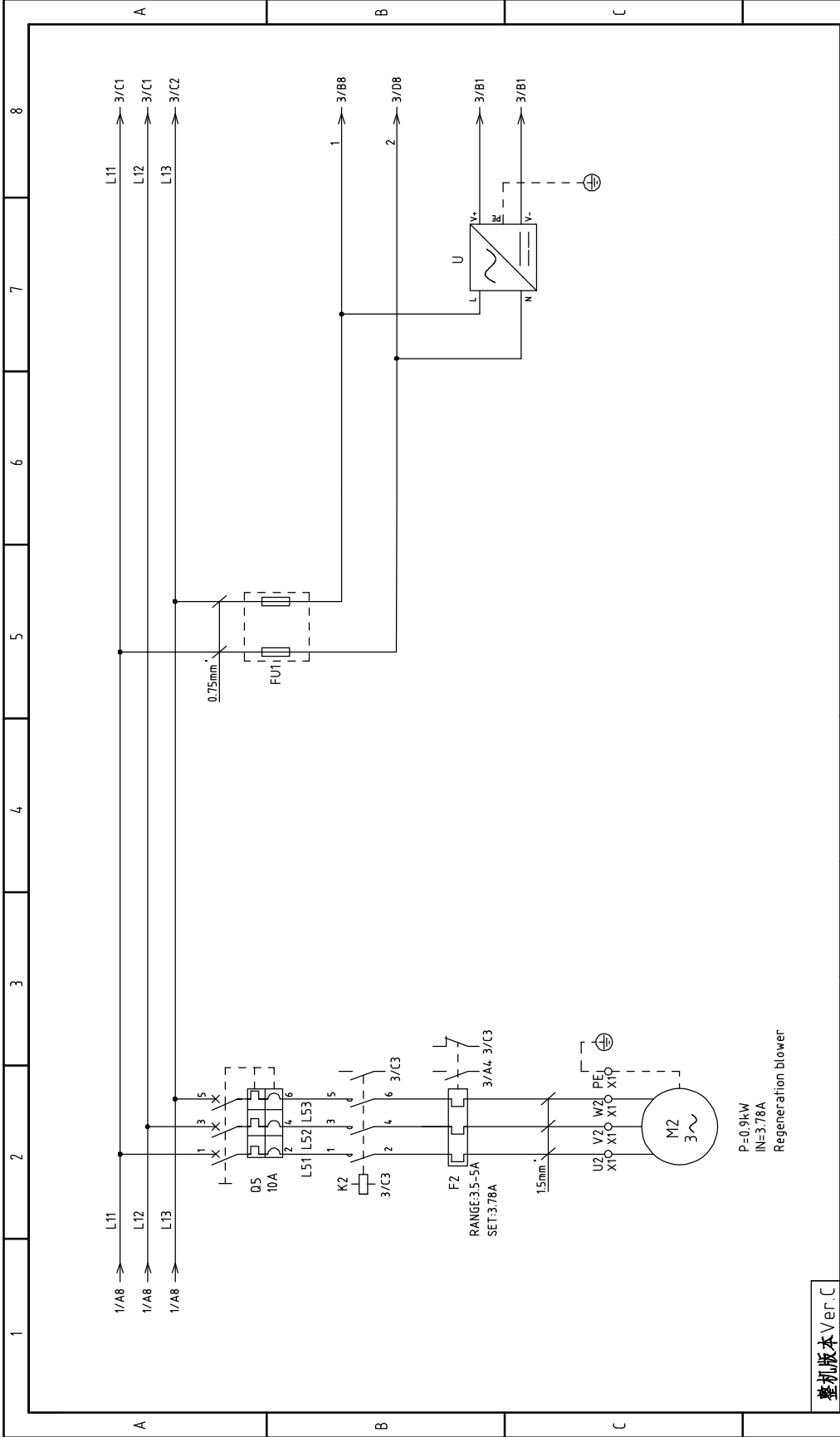
整机版本 Ver.C

Scale	Standard	CE	Page 1
Drawing NO.		SDD-600U(750U)/400H-CE-230V-D-1	Totally 6
Title		SDD-600U(750U)/400H	Pages
Main Circuit Diagram 1			230V
Voltage		Frequency	50Hz

Mark	Before modification	After modification	Modified by	Modify date	Checked by	Proofread by	Designer	Drawer	Version	D	Date	20170929
									Approved by			

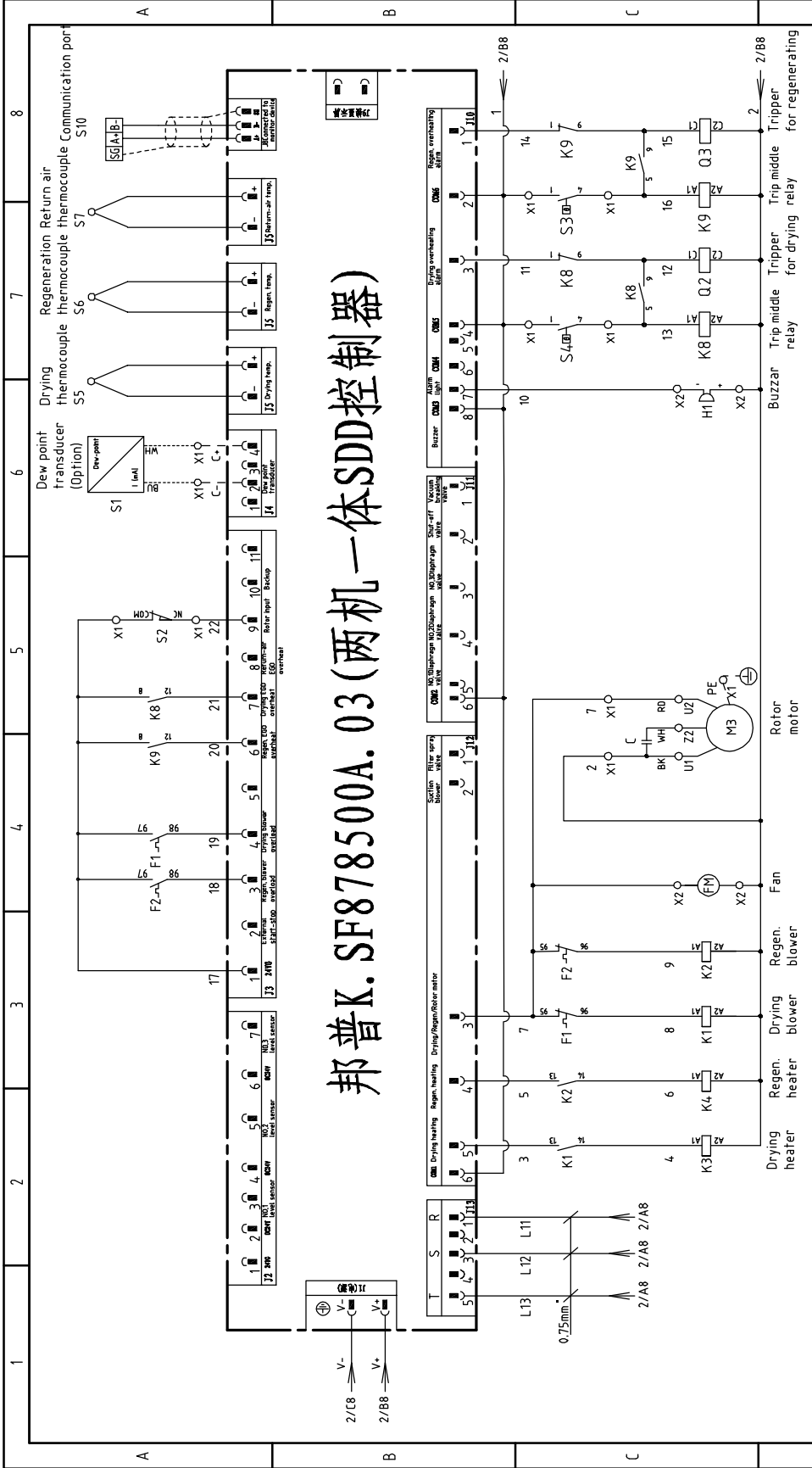
信易电热机械股份有限公司
Shini Plastics Technologies, Inc.





整机版本 Ver.C

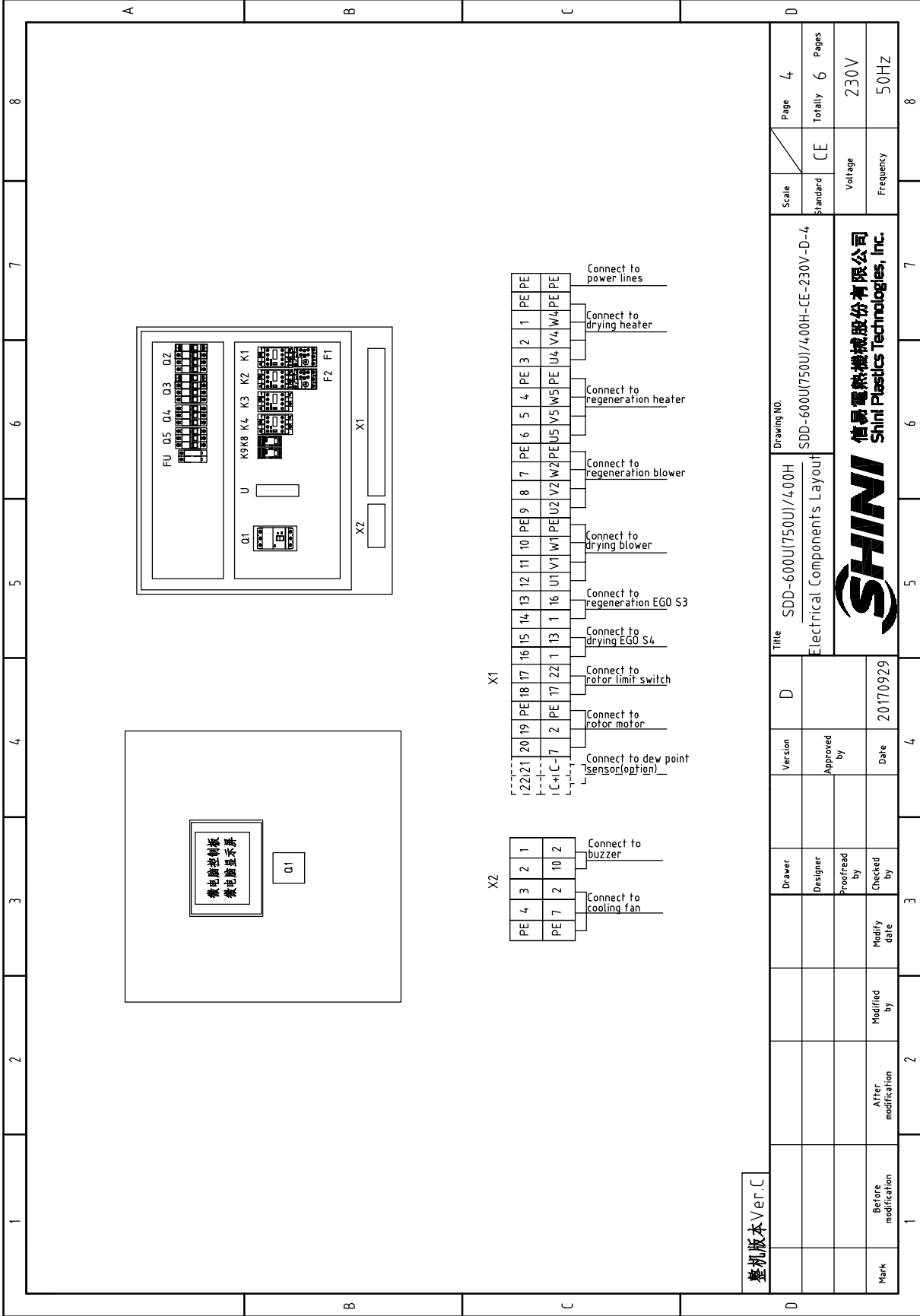
1	2	3	4	5	6	7	8	
Mark	Before modification	After modification	Modified by	Modified date	Checked by	Proofread by	Designer	
				20170929				
Version	D	Approved by		Date		20170929		
Drawer		Checked by		Date		20170929		
Title	SDD-600U(750U)/4.00H Main Circuit Diagram 2			SDD-600U(750U)/4.00H-CE-230V-D-2		Drawing NO.		
Scale	Standard		CE		Page 2		Page 2	
Standard	Voltage		Frequency		Totally 6		Pages 6	
	230V		50HZ					
				信易电热机械股份有限公司 Shini Plastics Technologies, Inc.				



邦普K.SF878500A.03 (两机一体SDD控制器)

整机版本 Ver.C

Title	D	Version	D
SDD-600U(750U)/4.00H	Control Circuit Diagram	Approved by	Page 3
SHINI	SHINI	Checked by	Standard
信易电热机械股份有限公司	SHINI	Modify date	Scale
Shini Plastics Technologies, Inc.	SHINI	Date	SDD-600U(750U)/4.00H-CE-230V-D-3
Voltage	230V	20170929	Totally 6 Pages
Frequency	50HZ	20170929	Voltage
Frequency	50HZ	20170929	Frequency
8	8	8	8




整机版本 Ver.C

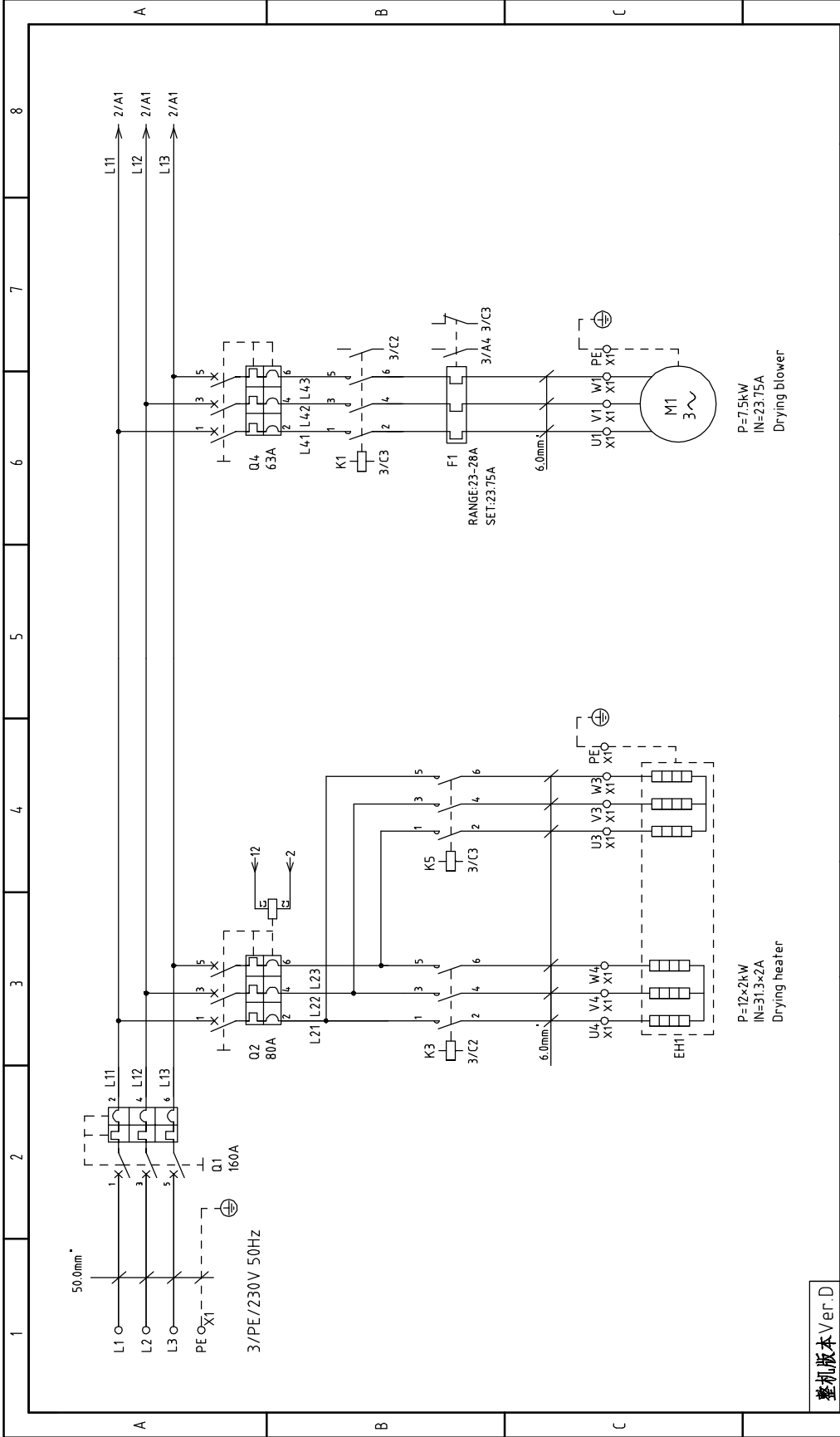
Mark	Before modification	Modified by	Modify date	Checked by	Approved by	Version	D	Title	SDD-600U(750U)/4,00H Electrical Components Layout	Standard	CE	Page	4
			20170929						SDD-600U(750U)/400H-CE-230V-D-4	Standard	CE	Totally	6
												Voltage	230V
												Frequency	50HZ

SHINI
信易电热机械股份有限公司
Shini Plastics Technologies, Inc.

Drawing NO.

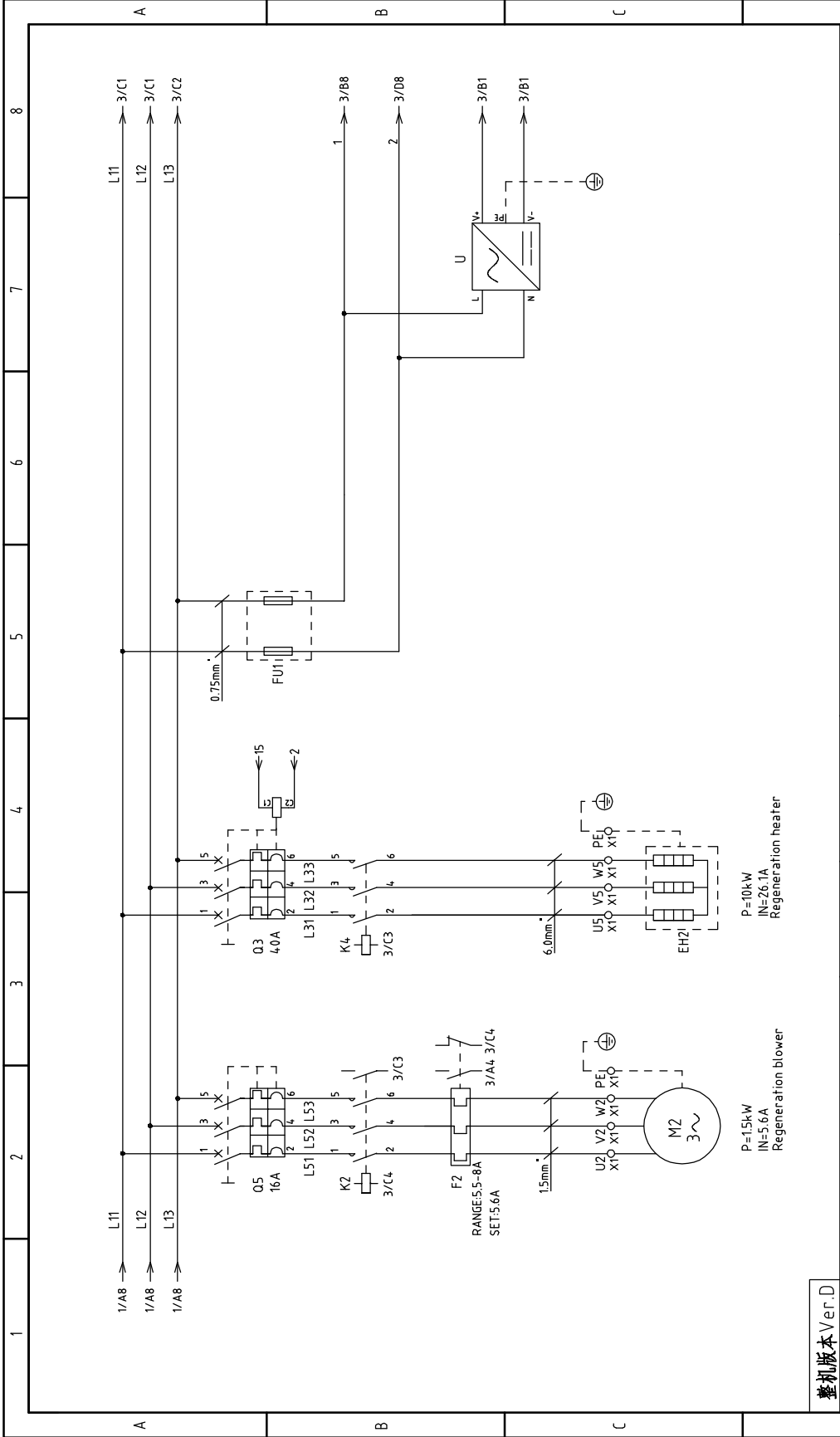
X2		PE 4	3	2	1	Connect to buzzer
X1		22	21	20	19	PE
		18	17	16	15	14
		13	12	11	10	PE
		9	8	7	6	5
		4	3	2	1	PE
		16	15	14	13	12
		11	10	9	8	7
		6	5	4	3	2
		1	PE	16	15	14
		13	12	11	10	9
		8	7	6	5	4
		3	2	1	PE	16
		13	12	11	10	9
		8	7	6	5	4
		3	2	1	PE	16
		13	12	11	10	9
		8	7	6	5	4
		3	2	1	PE	16
		13	12	11	10	9
		8	7	6	5	4
		3	2	1	PE	16
		13	12	11	10	9
		8	7	6	5	4
		3	2	1	PE	16
		13	12	11	10	9
		8	7	6	5	4
		3	2	1	PE	16
		13	12	11	10	9
		8	7	6	5	4
		3	2	1	PE	16
		13	12	11	10	9
		8	7	6	5	4
		3	2	1	PE	16
		13	12	11	10	9
		8	7	6	5	4
		3	2	1	PE	16
		13	12	11	10	9
		8	7	6	5	4
		3	2	1	PE	16
		13	12	11	10	9
		8	7	6	5	4
		3	2	1	PE	16
		13	12	11	10	9
		8	7	6	5	4
		3	2	1	PE	16
		13	12	11	10	9
		8	7	6	5	4
		3	2	1	PE	16
		13	12	11	10	9
		8	7	6	5	4
		3	2	1	PE	16
		13	12	11	10	9
		8	7	6	5	4
		3	2	1	PE	16
		13	12	11	10	9
		8	7	6	5	4
		3	2	1	PE	16
		13	12	11	10	9
		8	7	6	5	4
		3	2	1	PE	16
		13	12	11	10	9
		8	7	6	5	4
		3	2	1	PE	16
		13	12	11	10	9
		8	7	6	5	4
		3	2	1	PE	16
		13	12	11	10	9
		8	7	6	5	4
		3	2	1	PE	16
		13	12	11	10	9
		8	7	6	5	4
		3	2	1	PE	16
		13	12	11	10	9
		8	7	6	5	4
		3	2	1	PE	16
		13	12	11	10	9
		8	7	6	5	4
		3	2	1	PE	16
		13	12	11	10	9
		8	7	6	5	4
		3	2	1	PE	16
		13	12	11	10	9
		8	7	6	5	4
		3	2	1	PE	16
		13	12	11	10	9
		8	7	6	5	4
		3	2	1	PE	16
		13	12	11	10	9
		8	7	6	5	4
		3	2	1	PE	16
		13	12	11	10	9
		8	7	6	5	4
		3	2	1	PE	16
		13	12	11	10	9
		8	7	6	5	4
		3	2	1	PE	16
		13	12	11	10	9
		8	7	6	5	4
		3	2	1	PE	16
		13	12	11	10	9
		8	7	6	5	4
		3	2	1	PE	16
		13	12	11	10	9
		8	7	6	5	4
		3	2	1	PE	16
		13	12	11	10	9
		8	7	6	5	4
		3	2	1	PE	16
		13	12	11	10	9
		8	7	6	5	4
		3	2	1	PE	16
		13	12	11	10	9
		8	7	6	5	4
		3	2	1	PE	16
		13	12	11	10	9
		8	7	6	5	4
		3	2	1	PE	16
		13	12	11	10	9
		8	7	6	5	4
		3	2	1	PE	16
		13	12	11	10	9
		8	7	6	5	4
		3	2	1	PE	16
		13	12	11	10	9
		8	7	6	5	4
		3	2	1	PE	16
		13	12	11	10	9
		8	7	6	5	4
		3	2	1	PE	16
		13	12	11	10	9
		8	7	6	5	4
		3	2	1	PE	16
		13	12	11	10	9
		8	7	6	5	4
		3	2	1	PE	16
		13	12	11	10	9
		8	7	6	5	4
		3	2	1	PE	16
		13	12	11	10	9
		8	7	6	5	4
		3	2	1	PE	16
		13	12	11	10	9
		8	7	6	5	4
		3	2	1	PE	16
		13	12	11	10	9
		8	7	6	5	4
		3	2	1	PE	16
		13	12	11	10	9
		8	7	6	5	4
		3	2	1	PE	16
		13	12	11	10	9
		8	7	6	5	4
		3	2	1	PE	16
		13	12	11	10	9
		8	7	6	5	4
		3	2	1	PE	16
		13	12	11	10	9
		8	7	6	5	4
		3	2	1	PE	16
		13	12	11	10	9
		8	7	6	5	4
		3	2	1	PE	16
		13	12	11	10	9
		8	7	6	5	4
		3	2	1	PE	16
		13	12	11	10	9
		8	7	6	5	4
		3	2	1	PE	16
		13	12	11	10	9
		8	7	6	5	4
		3	2	1	PE	16
		13	12	11	10	9
		8	7	6	5	4
		3	2	1	PE	16
		13	12	11	10	9
		8	7	6	5	4
		3	2	1	PE	16
		13	12	11	10	9
		8	7	6	5	4
		3	2	1	PE	16
		13	12	11	10	9
		8	7	6	5	4
		3	2	1	PE	16
		13	12	11	10	9
		8	7	6	5	4
		3	2	1	PE	16
		13	12	11	10	9
		8	7	6	5	4
		3	2	1	PE	16
		13	12	11	10	9
		8	7	6	5	4
		3	2	1	PE	16
		13	12	11	10	9
		8	7	6	5	4
		3	2	1	PE	16
		13	12	11	10	9
		8	7	6	5	4
		3	2	1	PE	16
		13	12	11	10	9
		8	7	6	5	4
		3	2	1	PE	16
		13	12	11	10	9
		8	7	6	5	4
		3	2	1	PE	16
		13	12	11	10	9
		8	7	6	5	4
		3	2	1	PE	16
		13	12	11	10	9
		8	7	6	5	4
		3	2	1	PE	16
		13	12	11	10	9
		8	7	6	5	4
		3	2	1	PE	16
		13	12	11	10	9
		8	7	6	5	4
		3	2	1	PE	16
		13	12	11	10	9
		8	7	6	5	4
		3	2	1	PE	16
		13	12	11	10	9
		8	7	6	5	4
		3	2	1	PE	16

1	2	3	4	5	6	7	8	
NO.	Symbol	Name	Manufacturer	Type	Specification	Number	Material number	Remark
1	Q1	Breaker interlock	ABB	A1A125TMF125	125A	1	YE41161400000	
2	Q2	Circuit-breaker	TECO	BM-63C/3063S 3P	63A	1	YE40306303000	
3	Q3	Circuit-breaker	TECO	BM-63C/3025S 3P	25A	1	YE40302503000	
4	Q4	Circuit-breaker	TECO	BM-63C/3032S 3P	32A	1	YE40303203000	
5	Q5	Circuit-breaker	TECO	BM-63C/3010S 3P	10A	1	YE40301003000	
6		Excitation release	CHINT	MX	220V 50/60Hz	2	YE40023560000	
7	K1	Contact	SIEMENS	3RT6076-1AN20	25A 220V 50/60Hz	1	YE00602622000	
8	K2	Contact	SIEMENS	3RT6076-1AN21	9A 1N0 220V 50/60Hz	1	YE00601621000	
9	K3	Contact	SIEMENS	3RT5044-1AN20	65A 220V 50/60Hz	1	YE00504400000	
10	K4	Contact	SIEMENS	3RT6027-1AN21	32A 220V 50/60Hz	1	YE00602722000	
11	K8 K9	Relay	WEIDMULLER	DRM270730LT	220V 50/60Hz	2	YE03270700000	
12	F1	Overload relay	SIEMENS	3RU6126-4AB0	11-16A	1	YE01260110000	
13	F2	Overload relay	SIEMENS	3RU6116-1FB0	3.5-5A	1	YE01160350000	
14	PCB	Controller	***	K.SF878500A.03	-----	1	YE80878500100	
15	U	DC power	MEAN WELL	ESA-35-24	OUT=DC24V 1.5A	1	YE71352400100	
16	FU1	Fuse base	CHINT	RT28-32	2P	1	YE41032200000	
17		Fuse	CHINT	10*38 500V	2A	2	YE4600200100	
18	H1	Buzzer	HITPOINT	PK-35A	220VAC	1	YE84003500200	
19	S1	Dew-point transducer	CS	CS 217-0EM	POWER=24 VDC OUT=4-20mA	1	YE90021700100	(2)
20	S2	Micro switch	TEND	YBLXW-5/11G2	250V 5(4)A	1	-----	(1)
21	S3	Temperature protector	EGO	---	115-320 °C	1	-----	(1)
22	S4	Temperature protector	EGO	---	115-320 °C	1	-----	(1)
23	S5 S6 S7	Thermocouple	SHINI	ST-K	K	3	---	(1)
24	X1	Terminal board	HOLLEYWELL	35mm ⁹ PE	-	1	YE60003503500	
25		Terminal board	HOLLEYWELL	16mm ⁹	-	3	YE61160000000	
整机版本 Ver.C Notes: (1)Means it's not the material inside the control box. (2)Stands for optional dew-point monitor								
			Drawer	Version	Title		Scale	Page
			Designer	Approved by	SDD-600U(750U)/4.00H		Standard	5
			Proofread by	Date	SDD-600U(750U)/4.00H-CE-230V-D-5		CE	Totally
			Checked by	20170929	Electrical Components List 1		Standard	6
			Modified by		 信易电热机械股份有限公司 Shini Plastics Technologies, Inc.		Voltage	230V
			Modify date				Frequency	50HZ
Mark	Before modification	After modification						8



整机版本 Ver. D

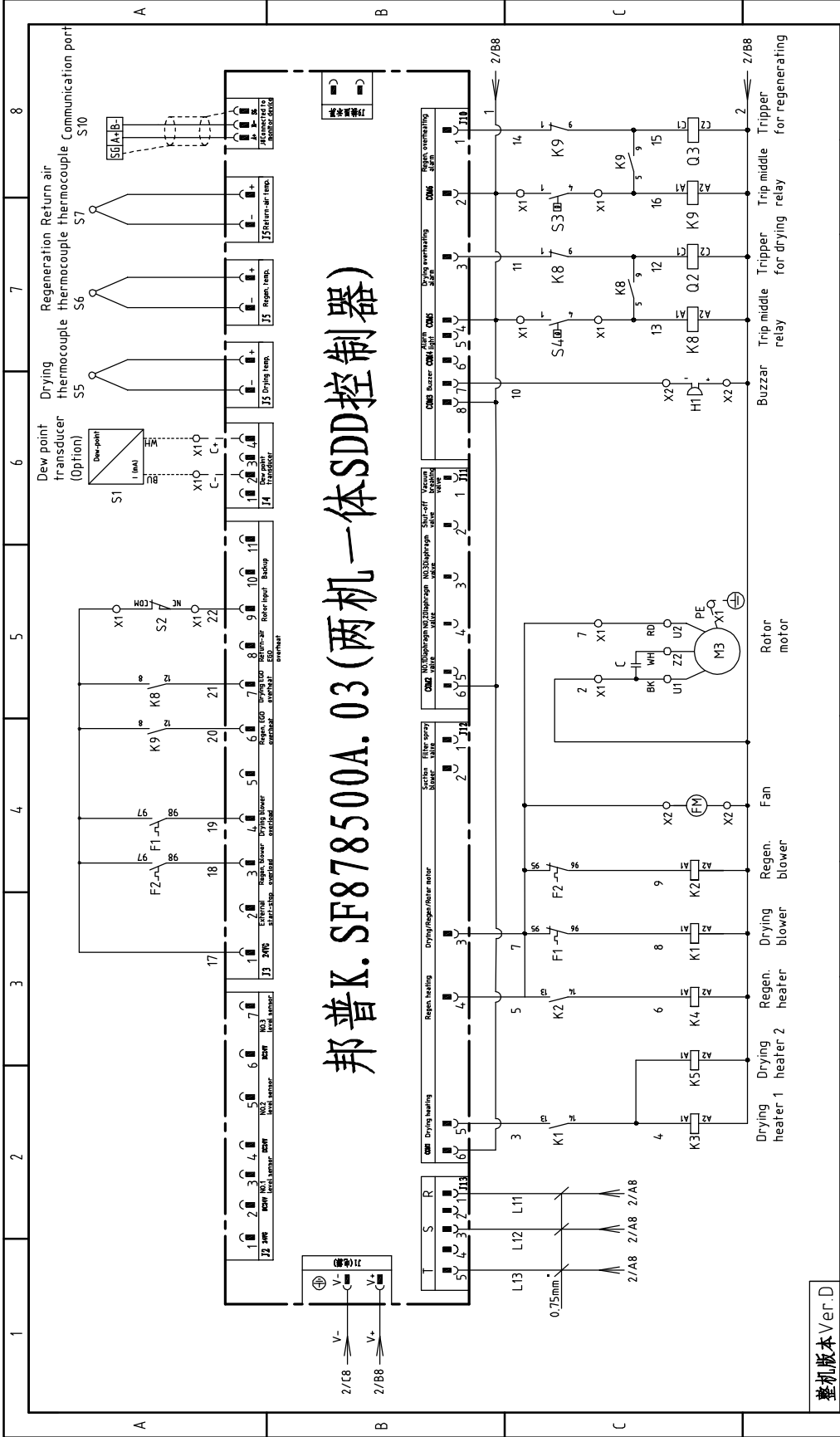
Mark	Before modification	After modification	Modified by	Modify date	Checked by	Proofread by	Designer	Drawer	Version	E	Title		SDD-900U/700H		Drawing NO.		SDD-900U/700H-CE-230V-E-1		Scale	Standard	CE	Page 1	Totally 6	Pages	
												SHINI		信易电热机械股份有限公司		Shini Plastics Technologies, Inc.									230V
										1	2	3	4	5	6	7	8								



整机版本 Ver.D

D	Title	SDD-900U/700H		Drawing NO.	SDD-900U/700H-CE-230V-E-2		Scale	Page	2
		Main Circuit Diagram 2			Standard	CE		Totally	6
D	Version	E		Approved by	Date	20170929		Voltage	230V
		Approved by				Date			Frequency
D	Drawer			Checked by	Modify date			Frequency	
		Designer				Date			Frequency
D	Mark	Before modification		Modified by	Modify date			Frequency	
		After modification				Date			Frequency



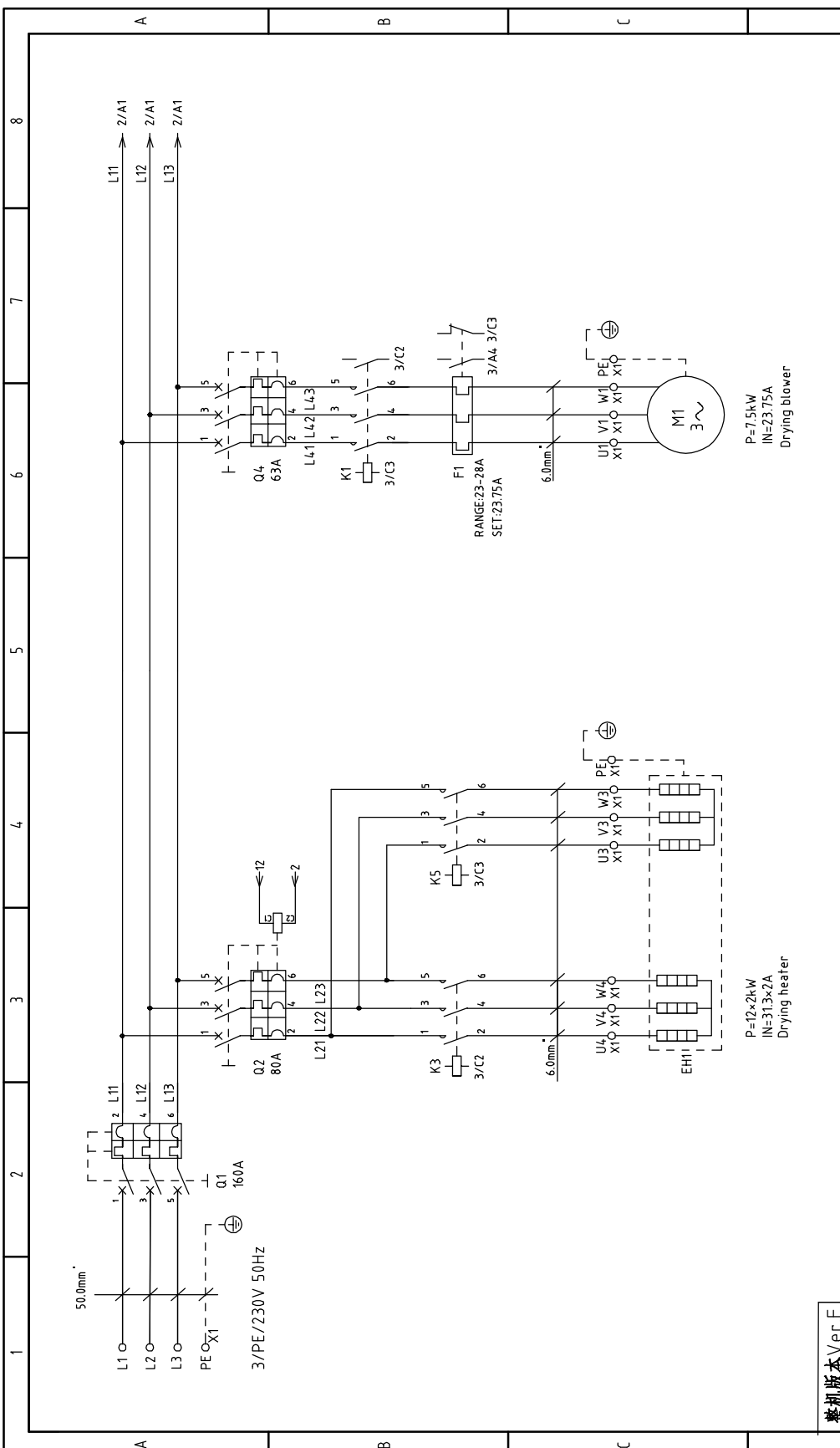


邦普K. SF878500A.03 (两机一体SDD控制器)

整机版本 Ver.D

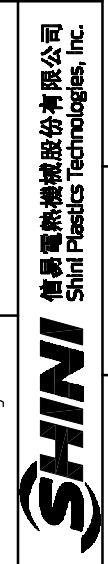
1	2	3	4
5	6	7	8
Drawing NO. SDD-900U/700H-CE-230V-E-3 Control Circuit Diagram		Scale Standard Voltage 230V Frequency 50HZ	
Title SDD-900U/700H Control Circuit Diagram		Page 3 Totaly 6 Pages	
Drawer Designer Proofread by Checked by Modify date	Version Approved by Date 20170929	信易电热机械股份有限公司 Shini Plastics Technologies, Inc.	
Mark Before modification After modification	Mark 20170929		

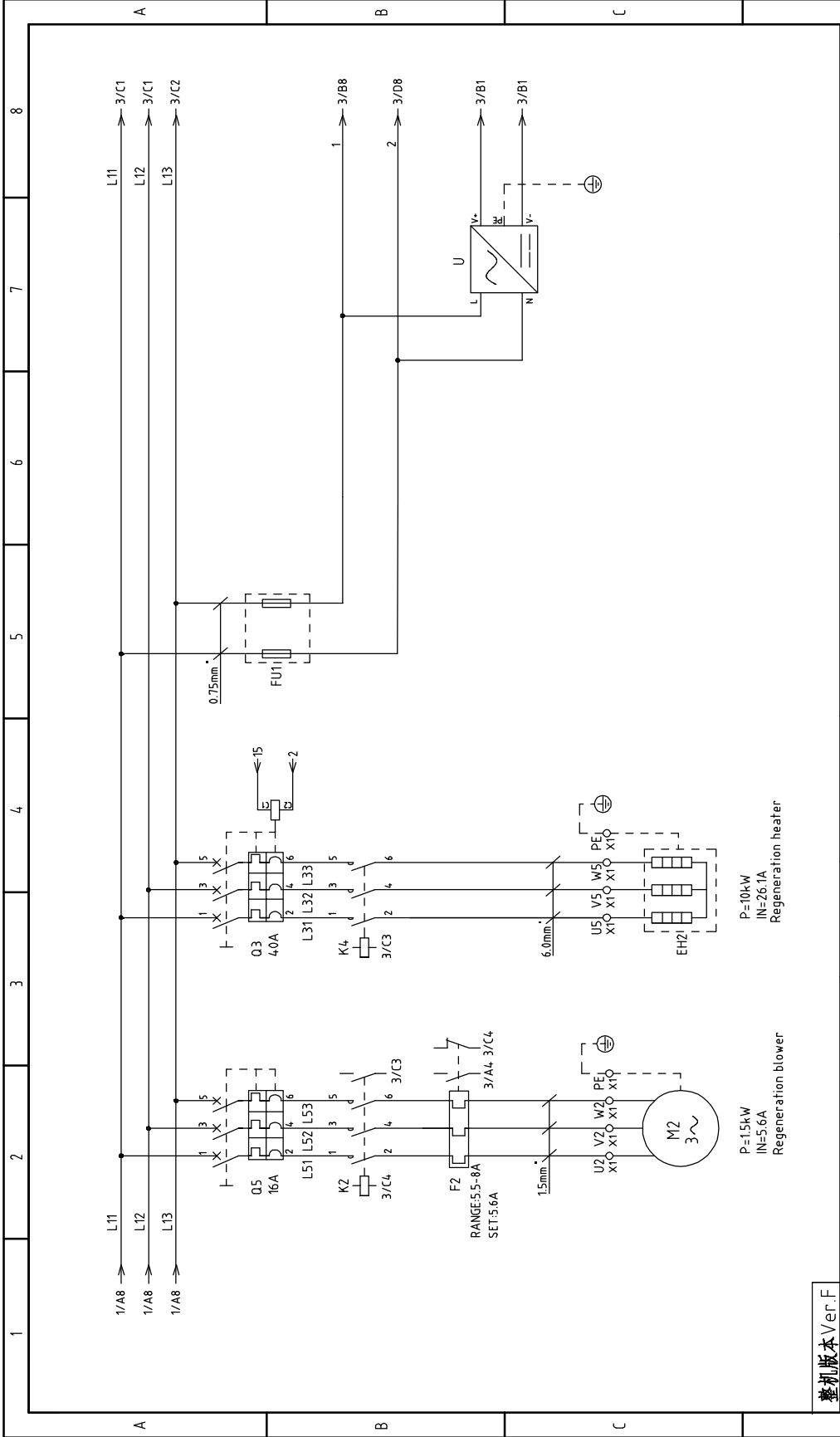
1	2	3	4	5	6	7	8	
NO.	Symbol	Name	Manufacturer	Type	Specification	Number	Material number	Remark
1	Q1	Breaker interlock	ABB	A2B250TMF160	160A	1	YE41161500000	
2	Q4	Circuit-breaker	TECO	BM-63C/3063S 3P	63A	1	YE40306303000	
3	Q5	Circuit-breaker	TECO	BM-63C/3016S 3P	16A	1	YE40301603000	
4	Q2	Circuit-breaker	TECO	BM-100D/3080S 3P	80A	1	YE40308003000	
5	Q3	Circuit-breaker	TECO	BM-63C/3040S 3P	40A	1	YE40304003000	
6		Excitation release	CHINT	MX	220V 50/60Hz	2	YE40023560000	
7	K1	Contact	SIEMENS	3RT6027-1AN21	32A 220V 50/60Hz	1	YE006602722000	
8	K2	Contact	SIEMENS	3RT6016-1AN21	9A 220V 50/60Hz	1	YE006601621000	
9	K3 K5	Contact	SIEMENS	3RT6028-1AN21	38A 220V 50/60Hz	2	YE006602822000	
10	K4	Contact	SIEMENS	3RT6028-1AN21	38A 220V 50/60Hz	1	YE006602822000	
11	K8 K9	Relay	WEIDMULLER	DRM270730LT	220V 50/60Hz	2	YE032707000000	
12	F1	Overload relay	SIEMENS	3RU6126-4NB0	23-28A	1	YE0116012620000	
13	F2	Overload relay	SIEMENS	3RU6116-1HB0	5.5-8A	1	YE01160550000	
14	PCB	Controller	•••	K.SF878500A.03	-----	1	YE80878500100	
15	U	DC power	MEAN WELL	ESA-35-24	OUT=DC24V 1.5A	1	YE71352400100	
16	FU1	Fuse base	CHINT	RT28-32	2P	1	YE41032200000	
17		Fuse	CHINT	10*38 500V	2A	2	YE46002000100	
18	H1	Buzzer	HITPOINT	PK-35A	220VAC	1	YE84003500200	
19	S1	Dew-point transducer	CS	CS 217-OEM	POWER=24 VDC OUT=4-20mA	1	YE90021700100	(1)(2)
20	S2	Micro switch	TEND	YBLXW-5/11G2	250V 5(4)A	1	----	(1)
21	S3	Temperature protector	EGO	---	115-320 °C	1	----	(1)
22	S4	Temperature protector	EGO	---	115-320 °C	1	----	(1)
23	S5 S6 S7	Thermocouple	SHINI	ST-K	K	3	----	(1)
24	X1	Terminal board	HOLLEYWELL	70mm ² PE	-	1	YE61070000000	
25		Terminal board	HOLLEYWELL	6mm ²	-	12	YE60000603200	
整机版本 Ver.D Notes: (1)Means it's not the material inside the control box. (2)Stands for optional dew-point monitor								
			Drawer	Version	Title		Scale	Page
			Designer	E	SDD-900U/700H		Standard	5
			Proofread by	Approved by	Electrical Components List 1		CE	Totally
			Checked by	Date	SDD-900U/700H-CE-230V-E-5		Voltage	6
			Modify date	20170929	SHINI		Frequency	8
			Modified by		信易熱熱機械股份有限公司 Shini Plastics Technologies, Inc.		230V	
			After modification				50HZ	
			Before modification					



整机版本 Ver.F

1	2	3	4	5	6	7	8
A	B	C	D				
Title			SDD-1200U/700H		Drawing NO.		Page 1
Main Circuit Diagram 1			SDD-1200U/700H-CE-230V-E-1		Standard		Totally 6
Version			E		Scale		CE
Approved by					Voltage		230V
Date			20170929		Frequency		50Hz
Modified by					Voltage		230V
Before modification					Frequency		50Hz
After modification					Voltage		230V
Date			20170929		Frequency		50Hz
Date			20170929		Voltage		230V
Date			20170929		Frequency		50Hz
Date			20170929		Voltage		230V
Date			20170929		Frequency		50Hz

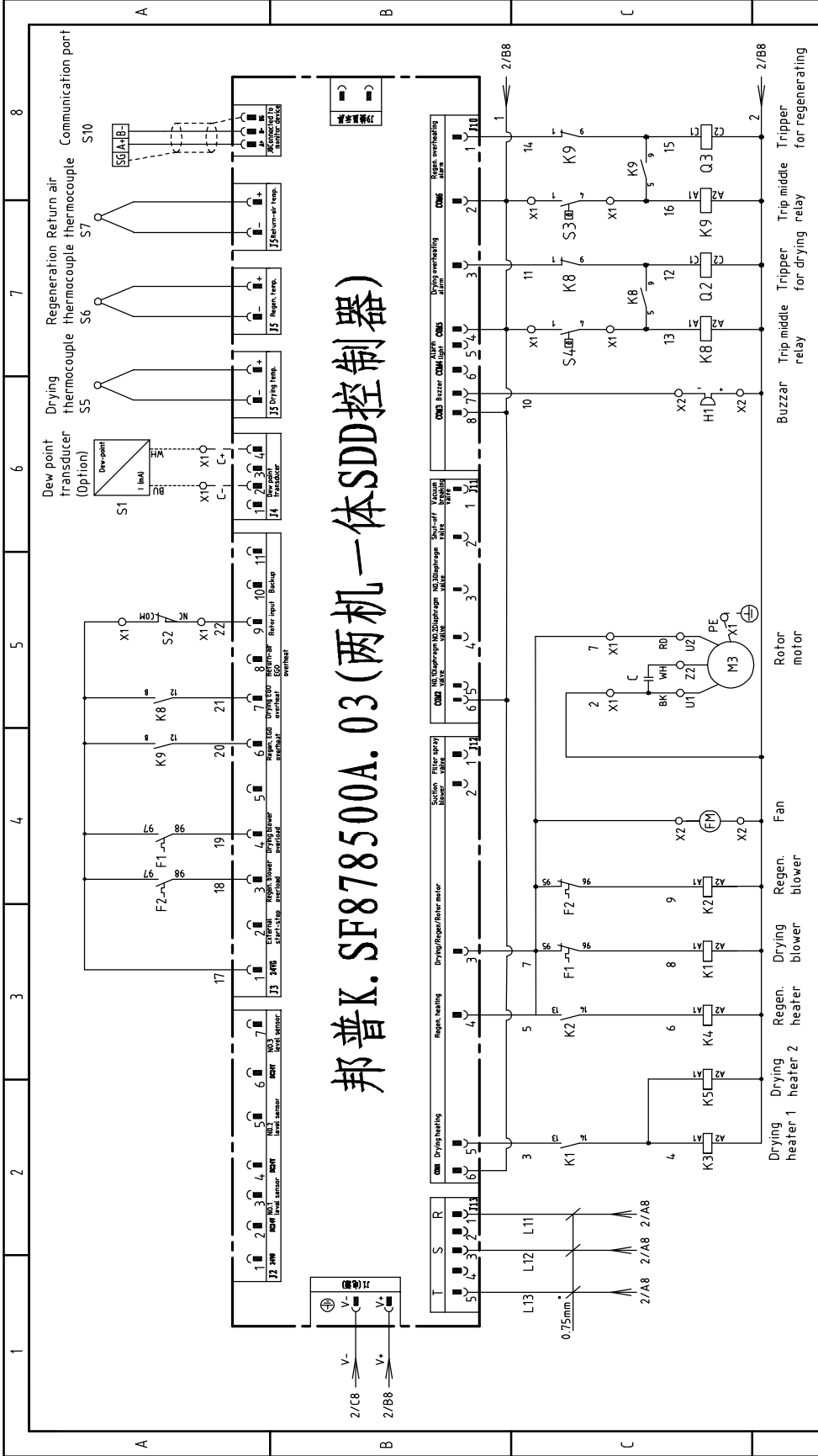




整机版本 Ver.F

1	2	3	4	5	6	7	8
Mark	Before modification	After modification	Modified by	Modified date	Checked by	Proofread by	Designer
							Designer
							Approved by
							Version
							E
Title				Drawing NO.			
SDD-1200U/700H				SDD-1200U/700H-CE-230V-E-2			
Main Circuit Diagram 2				CE			
SHINI				Voltage			
信易电热机械股份有限公司				Frequency			
Shini Plastics Technologies, Inc.				230V			
				50Hz			
				Page 2			
				Standard			
				Totally 6			
				Pages			



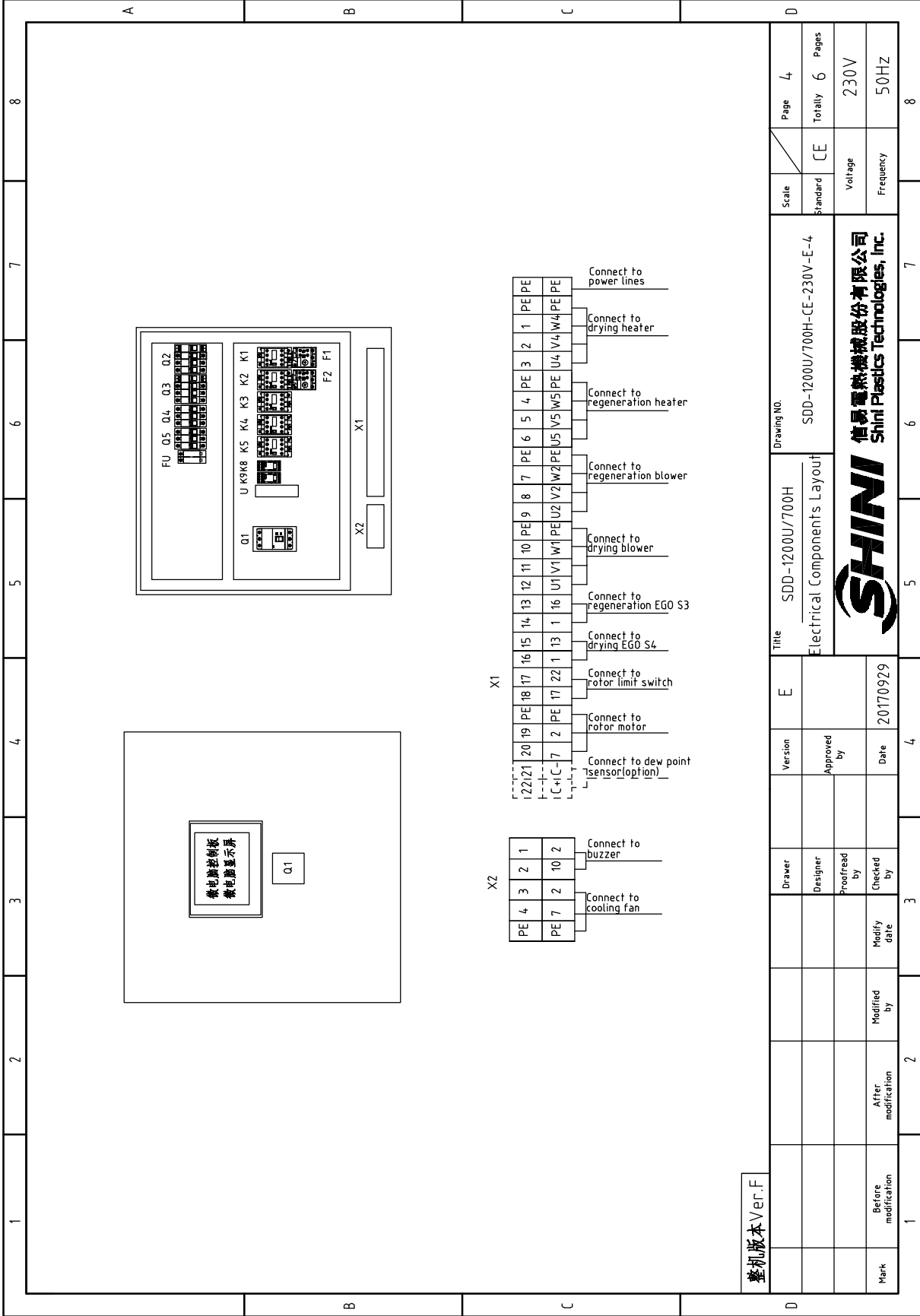


邦普K. SF878500A.03 (两机一体SDD控制器)

整机版本 Ver.F

1	2	3	4	5	6	7	8
Title		SDD-1200U/700H		Drawing NO.		Page 3	
Version		E		Scale		Standard CE	
Designer		Approved by		SDD-1200U/700H-CE-230V-E-3		Totally 6 Pages	
Proofread by		Date		Voltage		230V	
Checked by		20170929		Frequency		50HZ	
Modified by		Modify date		Voltage		230V	
After modification				Frequency		50HZ	
Before modification				Voltage		230V	
				Frequency		50HZ	





整机版本 Ver.F

Mark	Before modification	Modified by	After modification	Modify date	Checked by	Proofread by	Designer	Drawer	Version	E	Title	SDD-1200U/700H Electrical Components Layout		Drawing NO.	SDD-1200U/700H-CE-230V-E-4	Scale	Standard	CE	Page	4
									Approved by			SHINI 信易电热机械股份有限公司 Shini Plastics Technologies, Inc.							Totally	6
									Date	20170929									Voltage	230V
																			Frequency	50HZ

1	2		3	4	5	6	7	8
NO.	Symbol	Name	Manufacturer	Type	Specification	Number	Material number	Remark
1	Q1	Breaker interlock	ABB	A2B250TMF160	160A	1	YE41161500000	
2	Q4	Circuit-breaker	TECO	BM-63C/3063S 3P	63A	1	YE40306303000	
3	Q5	Circuit-breaker	TECO	BM-63C/3016S 3P	16A	1	YE40301603000	
4	Q2	Circuit-breaker	TECO	BM-100D/3080S 3P	80A	1	YE40308003000	
5	Q3	Circuit-breaker	TECO	BM-63C/3040S 3P	40A	1	YE40304003000	
6		Excitation release	CHINT	MX	220V 50/60Hz	2	YE40023560000	
7	K1	Contact	SIEMENS	3RT6027-1AN21	32A 220V 50/60Hz	1	YE00602722000	
8	K2	Contact	SIEMENS	3RT6016-1AN21	9A 220V 50/60Hz	1	YE00601621000	
9	K3 K5	Contact	SIEMENS	3RT6028-1AN21	38A 220V 50/60Hz	2	YE00602822000	
10	K4	Contact	SIEMENS	3RT6028-1AN21	38A 220V 50/60Hz	1	YE00602822000	
11	K8 K9	Relay	WEIDMULLER	DRM270730LT	220V 50/60Hz	2	YE03270700000	
12	F1	Overload relay	SIEMENS	3RU6126-4NB0	23-28A	1	YE01612620000	
13	F2	Overload relay	SIEMENS	3RU6116-1HB0	5.5-8A	1	YE01160550000	
14	PCB	Controller	***	K.SF878500A.03	-----	1	YE80878500100	
15	U	DC power	MEAN WELL	ESA-35-24	OUT=DC24V 1.5A	1	YE71352400100	
16	FU1	Fuse base	CHINT	RT28-32	2P	1	YE41032200000	
17		Fuse	CHINT	10*38 500V	2A	2	YE46002000100	
18	H1	Buzzer	HITPOINT	PK-35A	220VAC	1	YE84003500200	
19	S1	Dew-point transducer	CS	CS 217-OEM	POWER=24 VDC OUT=4-20mA	1	YE90021700100	(1)(2)
20	S2	Micro switch	TEND	YBLXW-5/11G2	250V 5(4)A	1	----	(1)
21	S3	Temperature protector	EGO	---	115-320 °C	1	----	(1)
22	S4	Temperature protector	EGO	---	115-320 °C	1	----	(1)
23	S5 S6 S7	Thermocouple	SHINI	ST-K	K	3	----	(1)
24	X1	Terminal board	HOLLEYWELL	70mm ³ PE	-	1	YE61070000000	
25		Terminal board	HOLLEYWELL	6mm ³	-	12	YE60000603200	
整机版本 Ver.F Notes: (1)Means it's not the material inside the control box. (2)Stands for optional dew-point monitor								
				Drawer	Version	Title		Scale
				Designer	E	SDD-1200U/700H		Page 5
				Proofread by	Approved by	Electrical Components List 1		Standard
				Checked by	Date	SDD-1200U/700H-CE-230V-E-5		CE
				Modify date	20170929	Voltage		Page 5
				After modification		Frequency		Totally 6
				Before modification		230V		Pages
						50HZ		8



Scale: CE
Voltage: 230V
Frequency: 50HZ

1	2		3		4		5		6		7		8																
NO.	Symbol	Name	Manufacturer	Type	Specification	Number	Material number	Remark																					
26		Terminal board	HOLLEYWELL	6mm ^φ PE	-	3	YE60000603500																						
27		Terminal board	HOLLEYWELL	4mm ^φ	-	3	YE60000403200																						
28		Terminal board	HOLLEYWELL	4mm ^φ PE	-	1	YE60000403500																						
29		Terminal board	HOLLEYWELL	2.5mm ^φ	-	8	YE600002503200																						
30		Terminal board	HOLLEYWELL	2.5mm ^φ PE	-	1	YE600002503400																						
31		Terminal board	HOLLEYWELL	2.5mm ^φ	-	2	YE600002503200	(2)																					
32	X2	Terminal board	HOLLEYWELL	2.5mm ^φ	-	4	YE600002503200																						
33		Terminal board	HOLLEYWELL	2.5mm ^φ PE	-	1	YE600002503400																						
34	FM	Fan	SUNON	DP-200A	230VAC 40W	1	-----	(1)																					
35	M1	Blower	SHINI	-----	230V 7.5kW	1	-----	(1)																					
36	M2	Blower	SHINI	-----	230V 1.5kW	1	-----	(1)																					
37	M3	Motor	----	-----	230V 0.015kW	1	-----	(1)																					
38	EH1	Pipe heater	SHINI	-----	230V 24kW	1	-----	(1)																					
39	EH2	Pipe heater	SHINI	-----	230V 10kW	1	-----	(1)																					
40	S10	Communication interface board RS-485 (double Dsub-9pin connector)	--	--	--	1	YE90048501200																						
41		Shell RS485(SAL-700G-A-19)0	--	--	--	1	YR40048500000																						
42		Terminal block E/GKseries(honeywell)			PCS	5	YE60000003900																						
整机版本 Ver.F Notes: (1)Means it's not the material inside the control box. (2)Stands for optional dew-point monitor.																													
<table border="1"> <tr> <td>Drawer</td> <td>Version</td> <td>E</td> </tr> <tr> <td>Designer</td> <td>Approved by</td> <td></td> </tr> <tr> <td>Proofread by</td> <td>Checked by</td> <td>Date</td> </tr> <tr> <td>Modified by</td> <td>Modify date</td> <td>20170929</td> </tr> </table>												Drawer	Version	E	Designer	Approved by		Proofread by	Checked by	Date	Modified by	Modify date	20170929	Drawing NO. SDD-1200U/700H-CE-230V-E-6 Electrical Components List 2		Scale Standard CE Voltage 230V Frequency 50HZ		Page 6 Totaly 6 Pages	
Drawer	Version	E																											
Designer	Approved by																												
Proofread by	Checked by	Date																											
Modified by	Modify date	20170929																											
SHINI 信易电热机械股份有限公司 Shini Plastics Technologies, Inc.																													