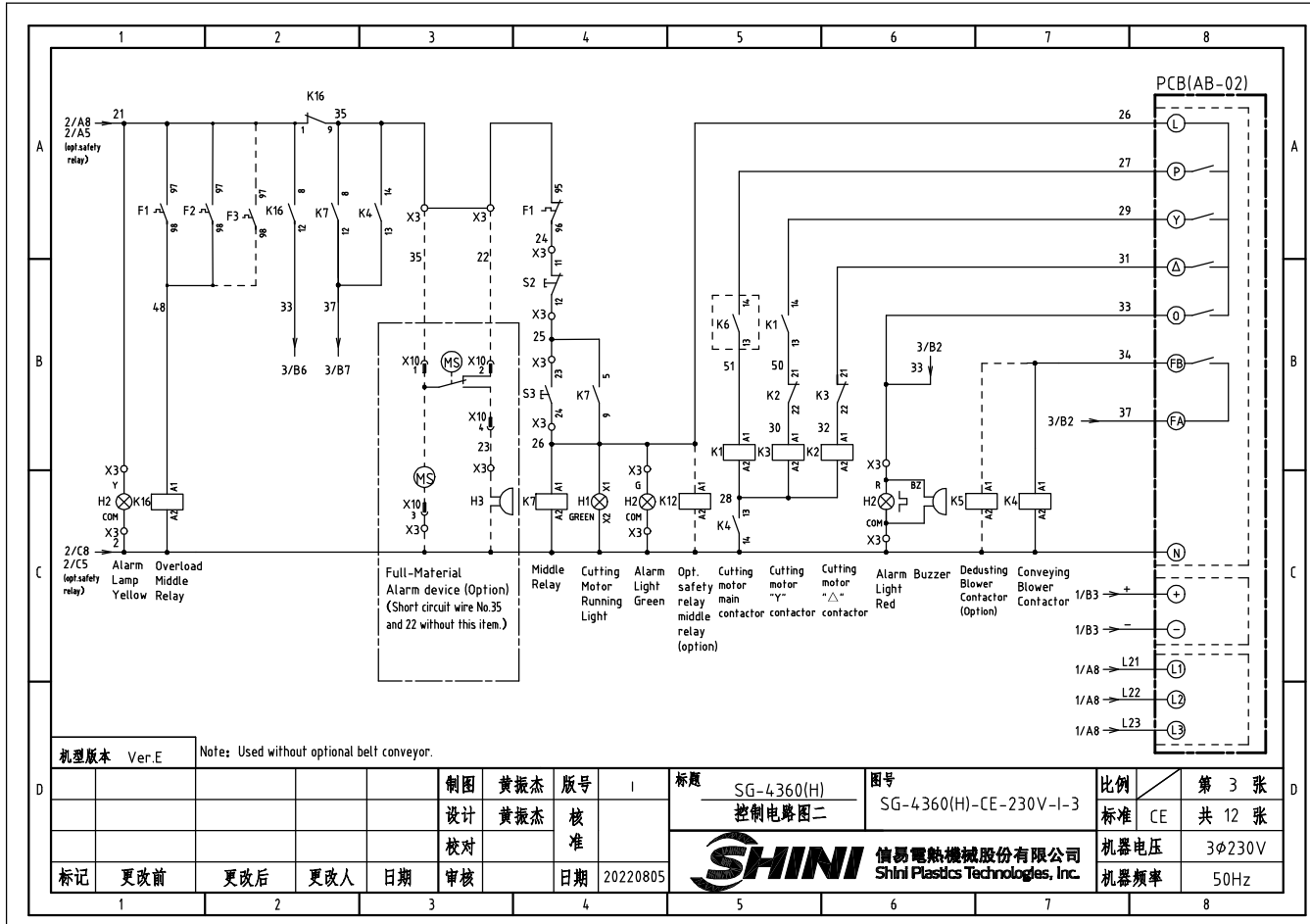


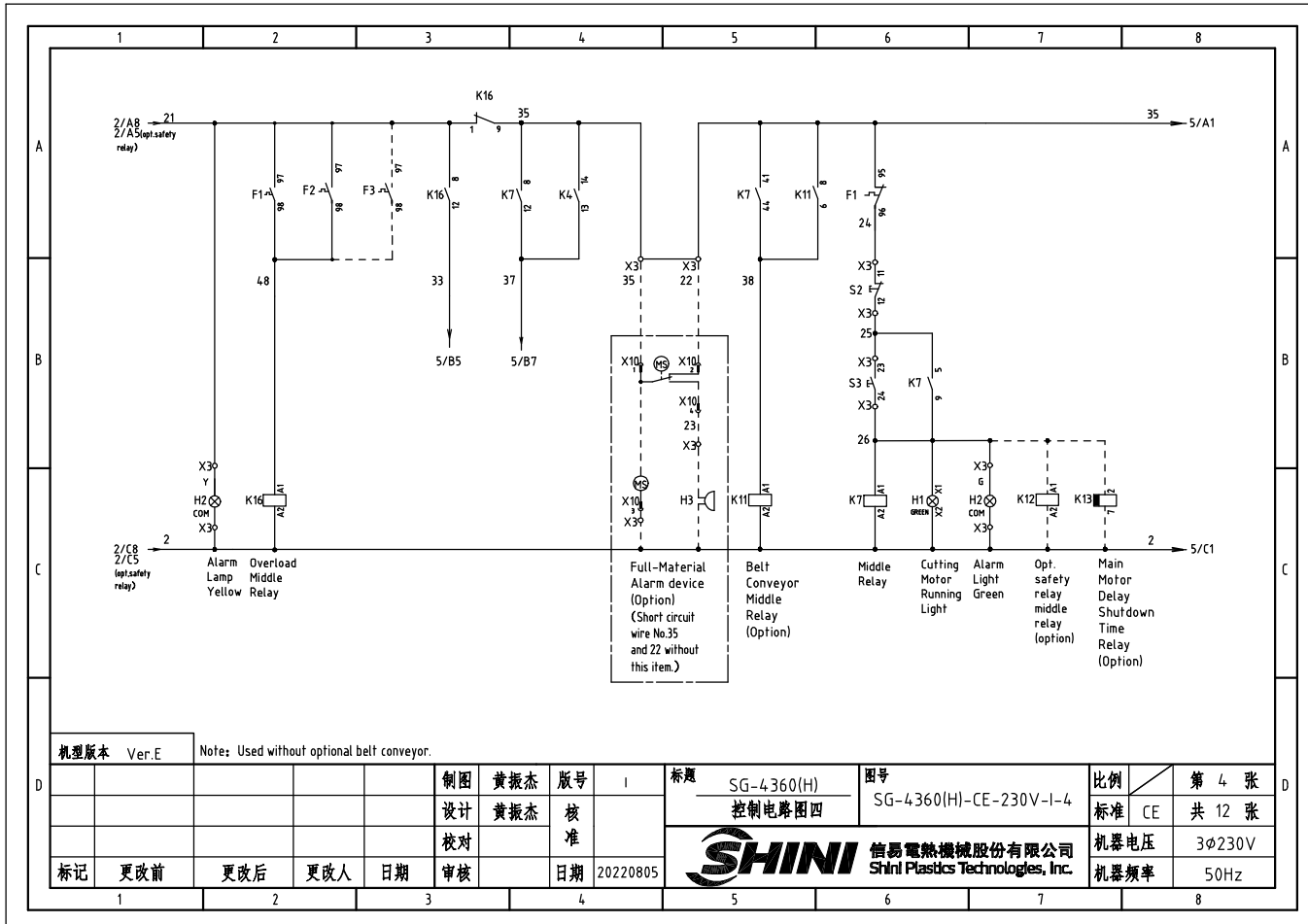
机型版本 Ver:E

制图	黄振杰	版号	1
设计	黄振杰	核准	
校对		核准	
标记	更改前	更改后	更改人
	日期	日期	20220805

标题	SG-4360(H) 控制电路图一	图号	SG-4360(H)-CE-230V-I-2
 信易电热机械股份有限公司 Shini Plastics Technologies, Inc.		比例	第 2 张
		标准	CE 共 12 张
		机器电压	3φ230V
		机器频率	50Hz



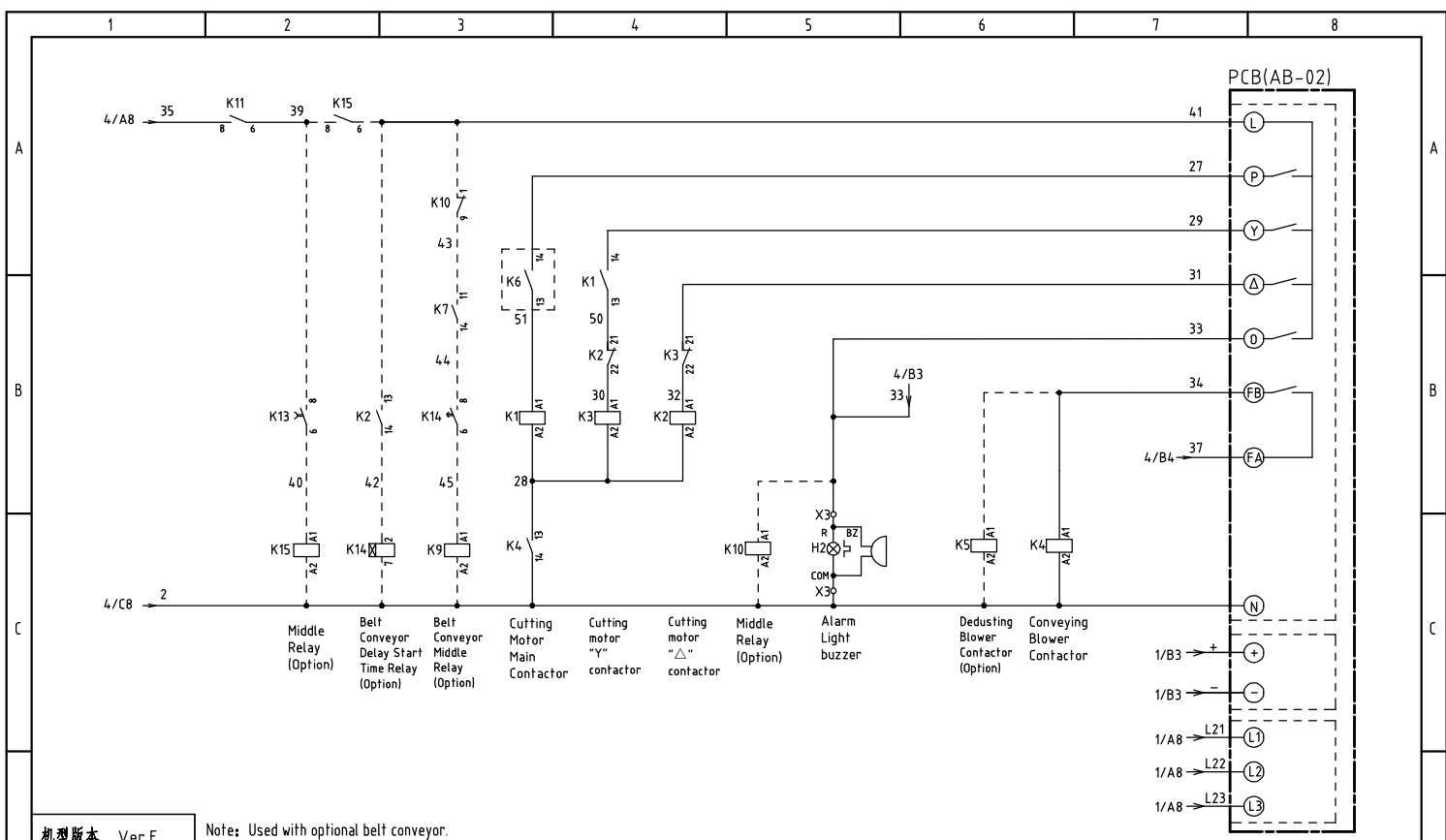
机型版本 Ver.E		Note: Used without optional belt conveyor.			制图 黄振杰	版号 1	标题 SG-4360(H) 控制电路图二	图号 SG-4360(H)-CE-230V-I-3	比例	第 3 张
					设计 黄振杰	核准			标准 CE	共 12 张
					校对				机器电压	3φ230V
					审核	日期 20220805	SHINI 信易电热机械股份有限公司 Shini Plastics Technologies, Inc.		机器频率	50Hz
1	2	3	4	5	6	7	8			



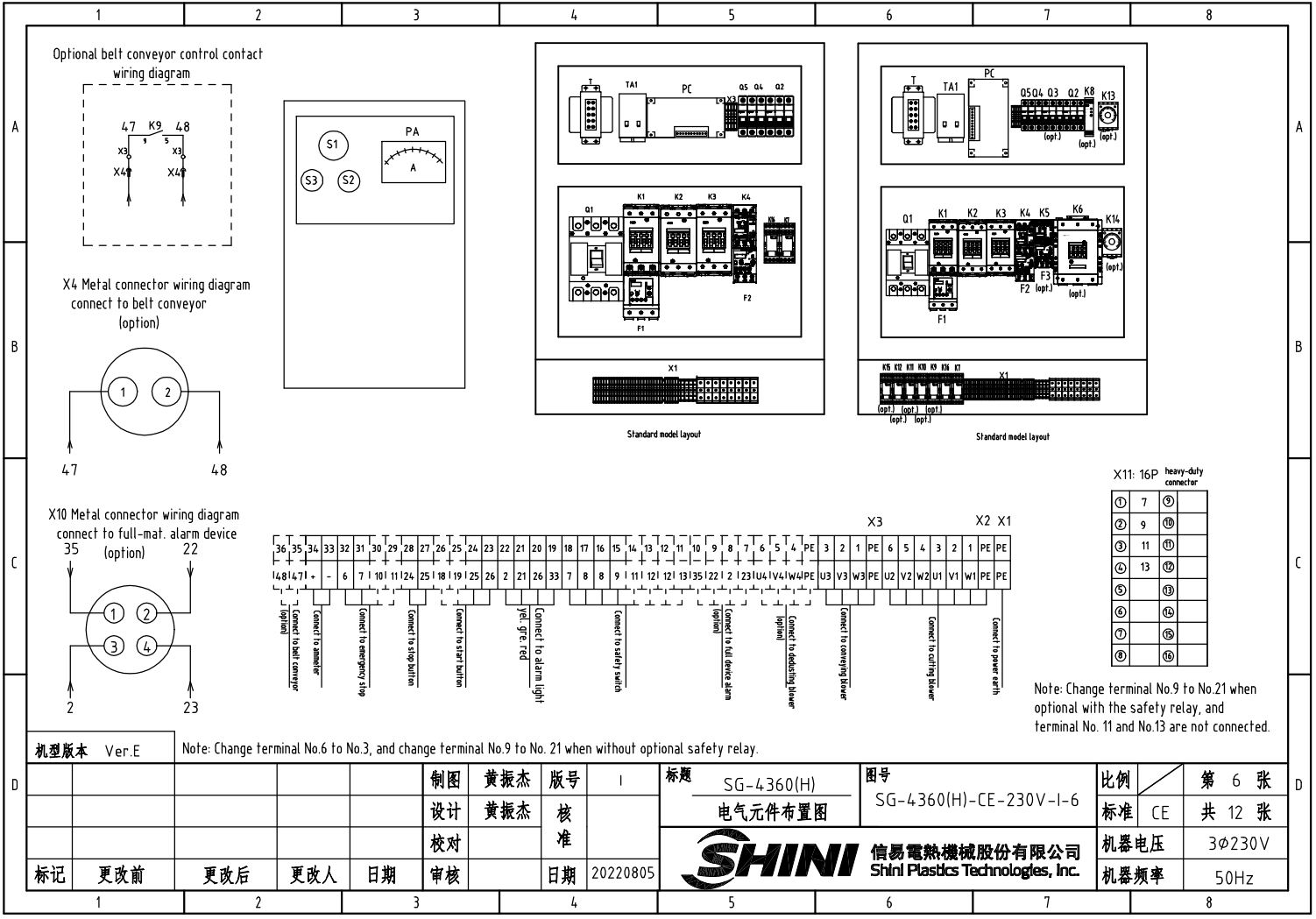
机型版本 Ver.E Note: Used without optional belt conveyor.

制图	黄振杰	版号	1	标题	SG-4360(H) 控制电路图四	图号	SG-4360(H)-CE-230V-I-4	比例	第 4 张
设计	黄振杰	核准						标准	CE 共 12 张
校对								机器电压	3φ230V
标记	更改前	更改后	更改人	日期	审核	日期	20220805	机器频率	50Hz

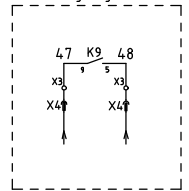




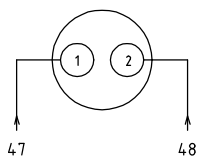
机型版本 Ver.E		Note: Used with optional belt conveyor.		制图 黄振杰		版号 1		标题 SG-4360(H) 控制电路图六		图号 SG-4360(H)-CE-230V-I-5		比例 第 5 张	
				设计 黄振杰		核准				标准 CE		共 12 张	
标记 更改前		更改后		更改人		日期 20220805		信易电热机械股份有限公司 Shini Plastics Technologies, Inc.		机器电压 3φ230V		机器频率 50Hz	
1		2		3		4				5		6	



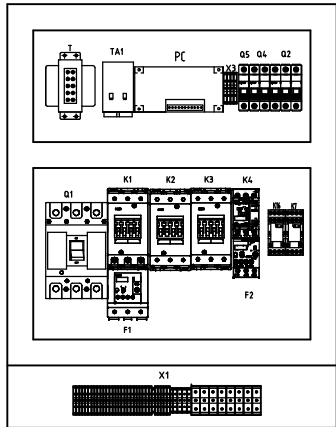
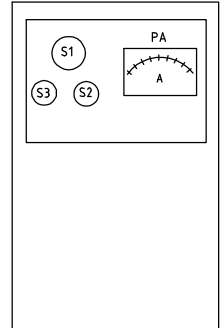
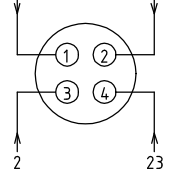
Optional belt conveyor control contact wiring diagram



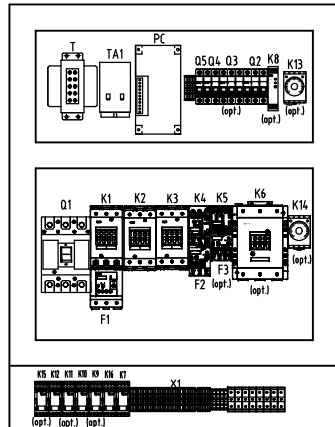
X4 Metal connector wiring diagram connect to belt conveyor (option)



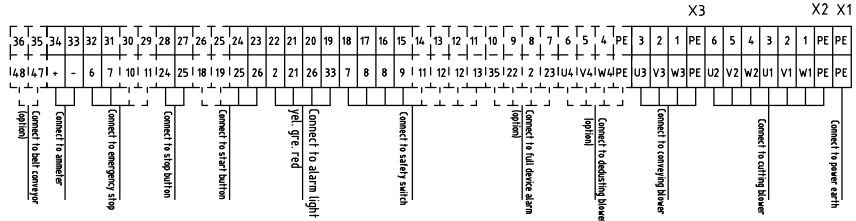
X10 Metal connector wiring diagram connect to full-mat. alarm device (option)



Standard model layout



Standard model layout



X11: 16P heavy-duty connector

①	7	⑦
②	9	⑩
③	11	⑪
④	13	⑫
⑤		⑬
⑥		⑭
⑧		⑮
⑨		⑯


Note: Change terminal No.9 to No.21 when optional with the safety relay, and terminal No. 11 and No.13 are not connected.

机型版本 Ver:E Note: Change terminal No.6 to No.3, and change terminal No.9 to No. 21 when without optional safety relay.

制图 黄振杰 版号 I				标题 SG-4360(H) 电气元件布置图		图号 SG-4360(H)-CE-230V-I-6		比例 第 6 张	
设计 黄振杰 核准				SHINI 信易电热机械股份有限公司 Shini Plastics Technologies, Inc.		标准 CE		共 12 张	
标记 更改前 更改后 更改人 日期 审核				日期 20220805		机器电压 3φ230V		机器频率 50Hz	

1		2		3		4		5		6		7		8		
NO.	Symbol	Name		Manufacturer		Type		Specification		Number	Material number		Remark			
A	1	Q1	Breaker interlock		TECO		TAX-250L3160 3P		160A		1	YE40250300400				
	2		(Circuit breaker ext. handler		TECO		FB1R-CS1-C-D1(TAX-250)		----		1	YE90211200300				
	3	Q2	Circuit breaker		TECO		BM-63C/3020S		20A		1	YE40302003000				
	4	Q2	Circuit breaker		TECO		BM-63C/3P		63A		1	YE40306303000		(6)		
	5	Q3	Circuit breaker		TECO		BM-63C/3010S		10A		1	YE40301003000		(2)		
	6	Q4	Circuit breaker		TECO		BM-63C/2006S 2P		6A		1	YE40200600000				
	7	Q5	Circuit breaker		TECO		BM-63C/1010S 1P		10A		1	YE40101000100				
B	8	K1,K2	Contactor		SIEMENS		3RT5045-1AC20		80A 24 VAC 50/60Hz		2	YE00504502600				
	9		Auxiliary contact		SIEMENS		3RH5921-1CA01		1NC		1	YE00592110100		(4)		
	10		Auxiliary contact		SIEMENS		3RH5921-1CA01		1NC		1	YE00592110100				
	11		Auxiliary contact		SIEMENS		3RH5921-1CA10		1NO		1	YE00592110000		(5)		
	12		Auxiliary contact		SIEMENS		3RH5921-1CA10		1NO		1	YE00592110000				
	13	K3	Contactor		SIEMENS		3RT5044-1AC20		65A 24VAC 50/60Hz		1	YE00504402600				
	14	K4	Contactor		SIEMENS		3RT6025-1AC20		17A 24 VAC 50/60Hz		1	YE00602502600				
C	15	K4	Contactor		SIEMENS		3RT6028-1AC20		38A 24 VAC 50/60Hz		1	YE00602802600		(6)		
	16		Auxiliary contact		SIEMENS		3RH6911-1HA11		1NC+1NO		1	YE00691100100				
	17	K5	Contactor		SIEMENS		3RT6016-1AB02		9A 24 VAC 50/60Hz		1	YE00601602600		(2)		
	18	K6	Contactor		SIEMENS		3RT5054-1AB36		115A 24 VAC 50/60Hz		1	YE00505400900		(4)		
	19		Auxiliary contact		SIEMENS		3RH5921-1CA01		1NC		1	YE00592110100		(4)		
	20		Auxiliary contact		SIEMENS		3RH5921-1CA10		1NO		1	YE00592110000		(4)		
	21	K7	Middle relay		Honeywell		GR-2C-AC24V		24 VAC		1	YE03022400300				
D	22	K7	Middle relay		Honeywell		GR-4C-AC24V		24 VAC		1	YE03042400300		(5)		
	23	K8	Safety relay		PILZ		PNOZ×2.8P		24V AC/DC		1	YE04023000000		(4)		
	24	T	Mutual transformer		----		IN=230/200V OUT=24VAC		300VA		1	YE70023005000				
	25	K9 K10 K11 K15	Middle relay		Honeywell		GR-2C-AC24V		24VAC		4	YE03022400300		(5)		
	机型版本 Ver.E		Notes:(1)Materials not in the control box;(2)Optional de-dust motor accessories;(3)Optional full mat. alarm ;(4)Optional safety relay; (5) Optional belt conveyor;(6) Optional large power:													
							制图 黄振杰 版号 1		标题 SG-4360 电气元件明细一		图号 SG-4360(H)-CE-230V-I-7		比例 第 7 张		D	
							设计 黄振杰 核 准						标准 CE 共 12 张			
						校对						机器电压 3φ230V				
标记 更改前		更改后		更改人		日期		审核		日期		20220805		SHINI 信易電熱機械股份有限公司 Shini Plastics Technologies, Inc.		
1		2		3		4		5		6		7		8		

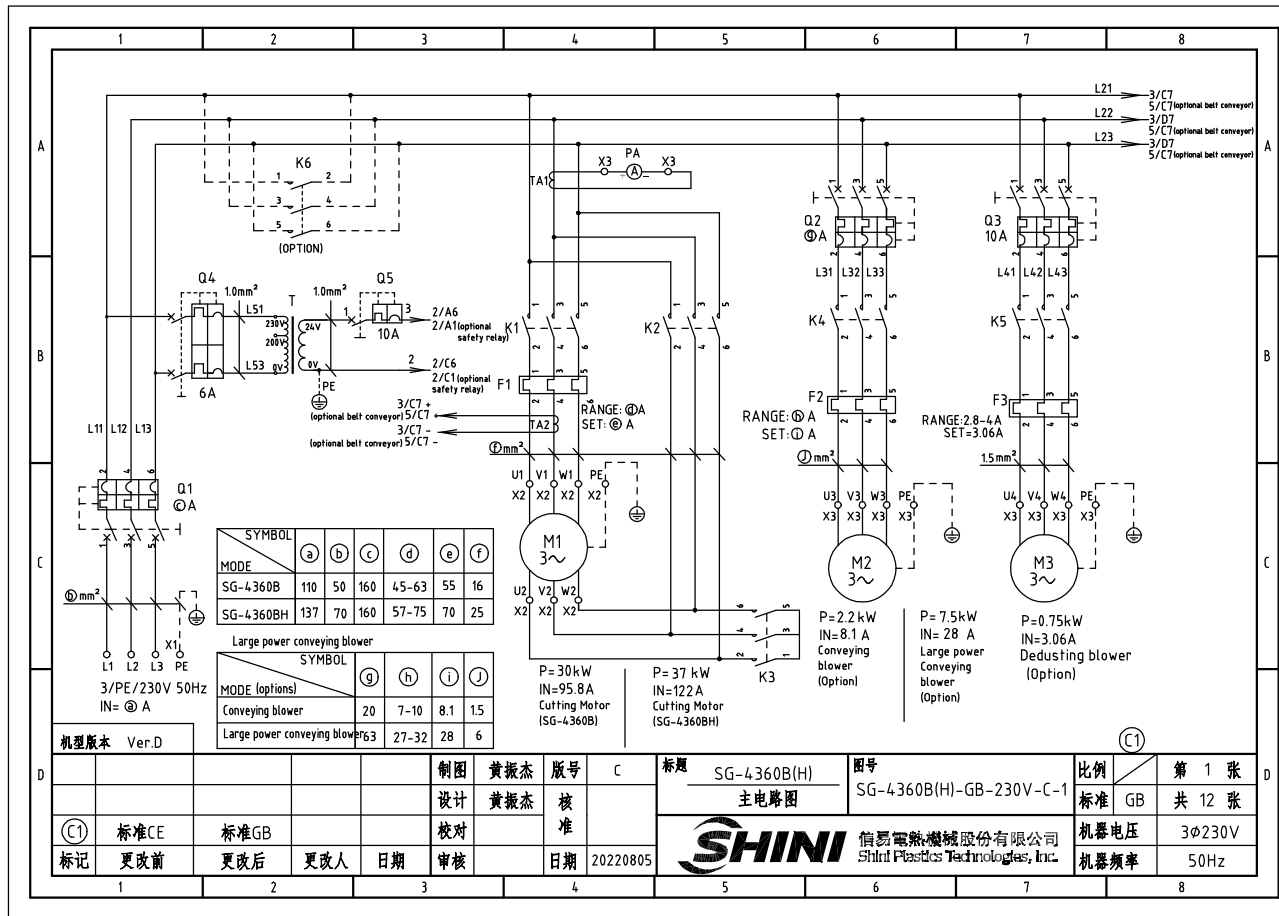
1		2		3		4		5		6		7		8									
NO.	Symbol	Name		Manufacturer		Type		Specification		Number	Material number		Remark										
26	K12	Middle relay		Honeywell		GR-2C-AC24V		24VAC		1	YE03022400300		(4)										
27	K13	Timer		YUYUN		TRF-N/3M		24VAC		1	YE86032400000		(5)										
28	K14	Timer		YUYUN		TH3A-NAB 60S		24VAC		1	YE86602400300		(5)										
29	F1	Thermal overload relay		SIEMENS		3RU5146-4JB0		45-63A		1	YE01514640000												
30	F2	Thermal overload relay		SIEMENS		3RU6126-1JB0		7-10A		1	YE01260700000												
31	F2	Thermal overload relay		SIEMENS		3RU6126-4EB0		27-32A		1	YE01612600600		(6)										
32	F3	Thermal overload relay		SIEMENS		3RU1116-1EB0		2.8-4A		1	YE01160280000		(2)										
33	K16	Middle relay		Honeywell		GR-2C-AC24V		24VAC		1	YE03022400300												
34	S1	Emergency stop button		SCHNEIDER		XB2BS542C		400VAC		1	YE11254200000		(1)										
35		Contact block		SCHNEIDER		ZB2BE102C		1NC		1	YE00210203100		(1)(4)										
36	S2	Emergency stop button		SCHNEIDER		XB2BA22C		400VAC		1	YE11222000000		(1)										
37	S3,H1	Start button (with light)		SCHNEIDER		XB2BW33B1C		24VAC		1	YE11233100000		(1)										
38		Contact block		SCHNEIDER		ZB2BE101C		1NO		1	YE00210103100		(1)(4)										
39	S4,S5	Safety switch		SCHMERSRC		AZ15-02ZVRK-1476		24VAC		2	YE16147600100		(1)										
40	S4,S5	Safety switch		SCHMERSRC		AZ16-02ZVRK-1476		24VAC		2	YE16147600000		(1)(4)										
41	H2	3-color alarm lamp		SHINI		red, gre.,yel,+buzzer		24VAC/DC 50/60Hz		1	BL90002401520		(1)										
42	H3	Buzzer		TEND		EA-2		24VAC		1	YE84240200000		(1)(3)										
43	MS	Maf. level motor		SHINI		SR-80		24VAC		1	YE15802400100		(1)(3)										
44	X1	Terminal board		Honeywell		GK35PE		35mm ² PE		1	YE60003503500												
45	X2	Terminal board		Honeywell		GK16		16mm ²		6	YE60001603200												
46				Honeywell		GK16PE		16mm ² PE		1	YE60001603500												
47	X3	Terminal board		Honeywell		SK2.5		2.5mm ²		21	YE60002503200												
48				Honeywell		GK2.5PE		2.5mm ² PE		1	YE60002503400												
49				Honeywell		SK2.5		2.5mm ²		5	YE60002503200		(2)										
50				Honeywell		GK2.5PE		2.5mm ² PE		1	YE60002503400		(2)										
机型版本		Ver.E		Notes:(1)Materials not in the control box;(2)Optional de-dust motor accessories;(3)Optional full mat. alarm ;(4)Optional safety relay; (5) Optional belt conveyor;(6) Optional large power:																			
				制图		黄振杰		版号		I		标题		SG-4360		图号		SG-4360(H)-CE-230V-I-8		比例		第 8 张	
				设计		黄振杰		核				电气元件明细二		标准		CE				共 12 张			
				校对				准				SHINI		信易電熱機械股份有限公司		Shini Plastics Technologies, Inc.		机器电压		3φ230V			
标记		更改前		更改后		更改人		日期		审核		日期		20220805				机器频率		50Hz			
1		2		3		4		5		6		7		8									

1		2		3		4		5		6		7		8					
NO.	Symbol	Name		Manufacturer		Type		Specification		Number	Material number		Remark						
51				Honeywell		SK2.5		2.5mm ²		4	YE60002503200		(3)						
52				Honeywell		SK2.5		2.5mm ²		2	YE60002503200		(5)						
53				Honeywell		SK2.5		2.5mm ²		8	YE60002503200		(4)						
54				Honeywell		SK6		6mm ²		3	YE60000603200		(6)						
55				Honeywell		SK6PE		6mm ² PE		1	YE60000603500		(6)						
56		Terminal fittings E/GK series		Honeywell		----		PCS		4	YE60000003900								
57	X4	Metal connector		SHINI		PLT-162-RR(plug)		2P		1	YE68016200100		(1)(5)						
58	X10	Metal connector		SHINI		PLT-254-PM		4P		1	YE68025400000		(1)(3)						
59		Metal connector		SHINI		PLT-254-RF		4P		1	YE68025400100		(1)(3)						
60	X11	Heavy duty connector		HARTING		16P+PE(plug+socket)		16P		1	YE68001601300		(1)						
61	PCB	Microcomputer board/PCB		YUYUN		AB-02		24VAC		1	YE80022400100								
62		Plastic shell SI-4T for circuit board		----		----		----		1	YR40000400100								
63	PA	Ammeter		SFIM		DH-670		100/5A		1	YE25671000000		(1)						
64	TA1	Current mutual transformer		RATIO		RQT-10		100/5A		1	YE04100500000								
65	TA2	Current mutual transformer		YUYUN		----		5-100A		1	----		with circuit board						
66	M1	Cutting motor		----		----		400V 50Hz 30kW		1	----		(1)						
67	M2	Conveying blower		----		----		400V 50Hz 2.2kW		1	----		(1)						
68	M2	Conveying blower		----		----		400V 50Hz 7.5kW		1	----		(1)(6)						
69	M3	De-dust blower		----		----		400V 50Hz 0.75kW		1	----		(1)(2)						
机型版本		Ver.E		Notes:(1)Materials not in the control box;(2)Optional de-dust motor accessories;(3)Optional full mat. alarm;(4)Optional safety relay;(5) Optional belt conveyor;(6) Optional large power:															
制图		黄振杰		版号		I		标题		SG-4360		图号		SG-4360-CE-230V-I-9		比例		第 9 张	
设计		黄振杰		核		准		电气元件明细三				标准		CE		共 12 张			
校对																			
标记		更改前		更改后		更改人		日期		审核		日期		20220805		 信易電熱機械股份有限公司 Shini Plastics Technologies, Inc.		机器电压 3φ230V 机器频率 50Hz	
1		2		3		4		5		6		7		8					

1		2		3		4		5		6		7		8	
NO.	Symbol	Name		Manufacturer		Type		Specification		Number	Material number		Remark		
A	1	Q1	Breaker interlock		TECO		TAX-250L3160 3P		160A		1	YE40250300400			
	2		Circuit breaker ext. handler		TECO		FB1R-CS1-C-D1(TAX-250)		----		1	YE90211200300			
	3	Q2	Circuit breaker		TECO		BM-63C/3020S		20A		1	YE40302003000			
	4	Q2	Circuit breaker		TECO		BM-63C/3P		63A		1	YE40306303000		(6)	
	5	Q3	Circuit breaker		TECO		BM-63C/3010S		10A		1	YE40301003000		(2)	
	6	Q4	Circuit breaker		TECO		BM-63C/2006S 2P		6A		1	YE40200600000			
	7	Q5	Circuit breaker		TECO		BM-63C/1010S 1P		10A		1	YE40101000100			
B	8	K1,K2	Contactor		SIEMENS		3RT5046-1AC20		95A 24VAC 50/60Hz		2	YE00504602600			
	9		Auxiliary contact		SIEMENS		3RH5921-1CA10		1NO		1	YE00592110000			
	10	K3	Contactor		SIEMENS		3RT5045-1AC20		80A 24VAC 50/60Hz		1	YE00504502600			
	11		Auxiliary contact		SIEMENS		3RH5921-1CA01		1NC		2	YE00592110100			
	12		Auxiliary contact		SIEMENS		3RH5921-1CA10		1NO		1	YE00592110000		(5)	
	13		Auxiliary contact		SIEMENS		3RH5921-1CA01		1NC		1	YE00592110100		(4)	
	14	K4	Contactor		SIEMENS		3RT6025-1AC20		17A 24VAC 50/60Hz		1	YE00602502600			
C	15	K4	Contactor		SIEMENS		3RT6028-1AC20		38A 24VAC 50/60Hz		1	YE00602802600		(6)	
	16		Auxiliary contactor		SIEMENS		3RH6911-1HA11		1NC+1NO		1	YE00691100100			
	17	K5	Contactor		SIEMENS		3RT6016-1AB02		9A 24VAC 50/60Hz		1	YE00601602600		(2)	
	18	K6	Contactor		SIEMENS		3RT5055-6AB36		150A 24VAC 50/60Hz		1	YE00505500600		(4)	
	19		Auxiliary contactor		SIEMENS		3RH5921-1CA01		1NC		1	YE00592110100		(4)	
	20		Auxiliary contactor		SIEMENS		3RH5921-1CA10		1NO		1	YE00592110000		(4)	
	21	K7	Middle relay		Honeywell		GR-2C-AC24V		24VAC		1	YE03022400300			
D	22	K8	Middle relay		Honeywell		GR-4C-AC24V		24VAC		1	YE03042400300		(5)	
	23	K9 K10 K11 K15	Safety relay		PILZ		PN0Z×2.8P		24V AC/DC		1	YE04023000000		(4)	
	24	K12	Middle relay		Honeywell		GR-2C-AC24V		24VAC		4	YE03022400300		(5)	
	25		Middle relay		Honeywell		GR-2C-AC24V		24VAC		1	YE03022400300		(4)	
	机型版本 Ver.E		Notes:(1)Materials not in the control box;(2)Optional de-dust motor accessories;(3)Optional full mat. alarm ;(4)Optional safety relay; (5) Optional belt conveyor;(6) Optional large power:												
				制图 黄振杰		版本号 1		标题 SG-4360H		图号 SG-4360(H)-CE-230V-I-10		比例		第 10 张	
				设计 黄振杰		核 准		电气元件明细一				标准 CE		共 12 张	
				校 对						信易电热机械股份有限公司 Shini Plastics Technologies, Inc.		机器电压		3φ230V	
标记 更改前		更改后		更改人		日期		审核		日期		20220805		机器频率 50Hz	
1		2		3		4		5		6		7		8	

1		2		3		4		5		6		7		8	
NO.	Symbol	Name		Manufacturer		Type		Specification		Number	Material number		Remark		
26	K13	Timer		YUYUN		TRF-N/3M		24VAC		1	YE86032400000		(5)		
27	K14	Timer		YUYUN		TH3A-NAB 60S		24VAC		1	YE86602400300		(5)		
28	F1	Thermal overload relay		SIEMENS		3RU5146-4KB0		57-75A		1	YE01514650000				
29	F2	Thermal overload relay		SIEMENS		3RU6126-1JB0		7-10A		1	YE01260700000				
30	F2	Thermal overload relay		SIEMENS		3RU6126-4EB0		27-32A		1	YE01612600600		(6)		
31	F3	Thermal overload relay		SIEMENS		3RU1116-1EB0		2.8-4A		1	YE01160280000		(2)		
32	K16	Middle relay		Honeywell		GR-2C-AC24V		24VAC		1	YE03022400300				
33	S1	Emergency stop button		SCHNEIDER		XB2BS542C		400VAC		1	YE11254200000		(1)		
34		Contact block		SCHNEIDER		ZB2BE102C		1NC		1	YE00210203100		(1)(4)		
35	S2	Stop button		SCHNEIDER		XB2BA22C		400VAC		1	YE11222000000		(1)		
36	S3,H1	Start button (with light)		SCHNEIDER		XB2BW33B1C		24VAC		1	YE11233100000		(1)		
37		Contact block		SCHNEIDER		ZB2BE101C		1NO		1	YE00210103100		(1)(4)		
38	S4,S5	Safety switch		SCHMERSRC		AZ16-02ZVRK-1476		230VAC		2	YE16147600000		(1)(4)		
39	S4,S5	Safety switch		SCHMERSRC		AZ15-02ZVRK-1476		230VAC		2	YE16147600100		(1)		
40	H2	3-color alarm lamp		SHINI		red, gre.,yel,+buzzer		24VAC/DC 50/60Hz		1	BL90002401520		(1)		
41	H3	Buzzer		TEND		EA-2		24VAC		1	YE84240200000		(1)(3)		
42	MS	Mat. level motor		SHINI		SR-80		24VAC		1	YE15802400100		(1)(3)		
43	T	Mutual transformer		----		IN=230/200V OUT=24VAC		300VA		1	YE70023005000				
44	TA1	Current mutual transformer		RATIO		RQT-35		100/5A		1	YE04100500000				
45	PA	Ammeter		SFIM		DH-670		100/5A		1	YE25671000000		(1)		
46	PCB	Microcomputer board/PCB		YUYUN		AB-02		24VAC		1	YE80022400100				
47		Plastic shell SI-4T for circuit board		----		----		----		1	YR40000400100				
48	TA2	Current mutual transformer		YUYUN		----		5-100A		1	----		with circuit board		
49	X1	Terminal board		Honeywell		GK35PE		35mm ² PE		1	YE60003503500				
50	X2	Terminal board		Honeywell		GK35		35mm ²		6	YE60003503200				
机型版本 Ver.E Notes:(1)Materials not in the control box;(2)Optional de-dust motor accessories;(3)Optional full mat. alarm ;(4)Optional safety relay; (5) Optional belt conveyor;(6) Optional large power:															
制图		黄振杰		版号		1		标题		SG-4360H		图号		SG-4360(H)-CE-230V-I-11	
设计		黄振杰		核准				电气元件明细二		比例		第 11 张		D	
校对								SHINI		标准		CE		共 12 张	
标记		更改前		更改后		更改人		日期		20220805		机器电压		3φ230V	
												机器频率		50Hz	

1		2		3		4		5		6		7		8					
NO.	Symbol	Name		Manufacturer		Type		Specification		Number	Material number		Remark						
		Terminal board		Honeywell		GK16PE		16mm ² PE		1	YE60001603500								
	X3	Terminal board		Honeywell		SK2.5		2.5mm ²		21	YE60002503200								
A				Honeywell		GK2.5PE		2.5mm ² PE		1	YE60002503400								
				Honeywell		SK2.5		2.5mm ²		5	YE60002503200		(2)						
				Honeywell		GK2.5PE		2.5mm ² PE		1	YE60002503400		(2)						
				Honeywell		SK2.5		2.5mm ²		4	YE60002503200		(3)						
				Honeywell		SK2.5		2.5mm ²		2	YE60002503200		(5)						
B				Honeywell		SK2.5		2.5mm ²		8	YE60002503200		(4)						
				Honeywell		SK6		6mm ²		3	YE60000603200		(6)						
				Honeywell		SK6PE		6mm ² PE		1	YE60000603500		(6)						
			Terminal fittings E/GK series		Honeywell		----		PCS		4	YE60000003900							
		X4	Metal connector		SHINI		PLT-162-RR(plug)		2P		1	YE68016200100		(1)(5)					
	X10	Metal connector		SHINI		PLT-254-PM		4P		1	YE68025400000		(1)(3)						
		Metal connector		----		PLT-254-RF		4P		1	YE68025400100		(1)(3)						
	X11	Heavy duty connector		HARTING		16P+PE(plug+socket)		16P		1	YE68001601300		(1)						
C	M1	Granulating motor		----		----		400V 50Hz 37kW		1	----		(1)						
	M2	Conveying blower		----		----		400V 50Hz 2.2kW		1	----		(1)						
	M2	Conveying blower		----		----		400V 50Hz 7.5kW		1	----		(1)(6)						
	M3	Dedusting blower		----		----		400V 50Hz 0.75kW		1	----		(1)(2)						
机型版本 Ver.E		Notes:(1)Materials not in the control box;(2)Optional de-dust motor accessories;(3)Optional full mat. alarm ;(4)Optional safety relay; (5) Optional belt conveyor;(6) Optional large power:																	
D	制图		黄振杰		版号		I		标题		SG-4360H		图号		比例		第 12 张		
	设计		黄振杰		核				电气元件明细三		SG-4360(H)-CE-230V-I-12		标准		CE		共 12 张		
	校对				准						信易電熱機械股份有限公司		机器电压		3φ230V				
	标记		更改前		更改后		更改人		日期		审核		日期		20220805		机器频率		50Hz
1		2		3		4		5		6		7		8					



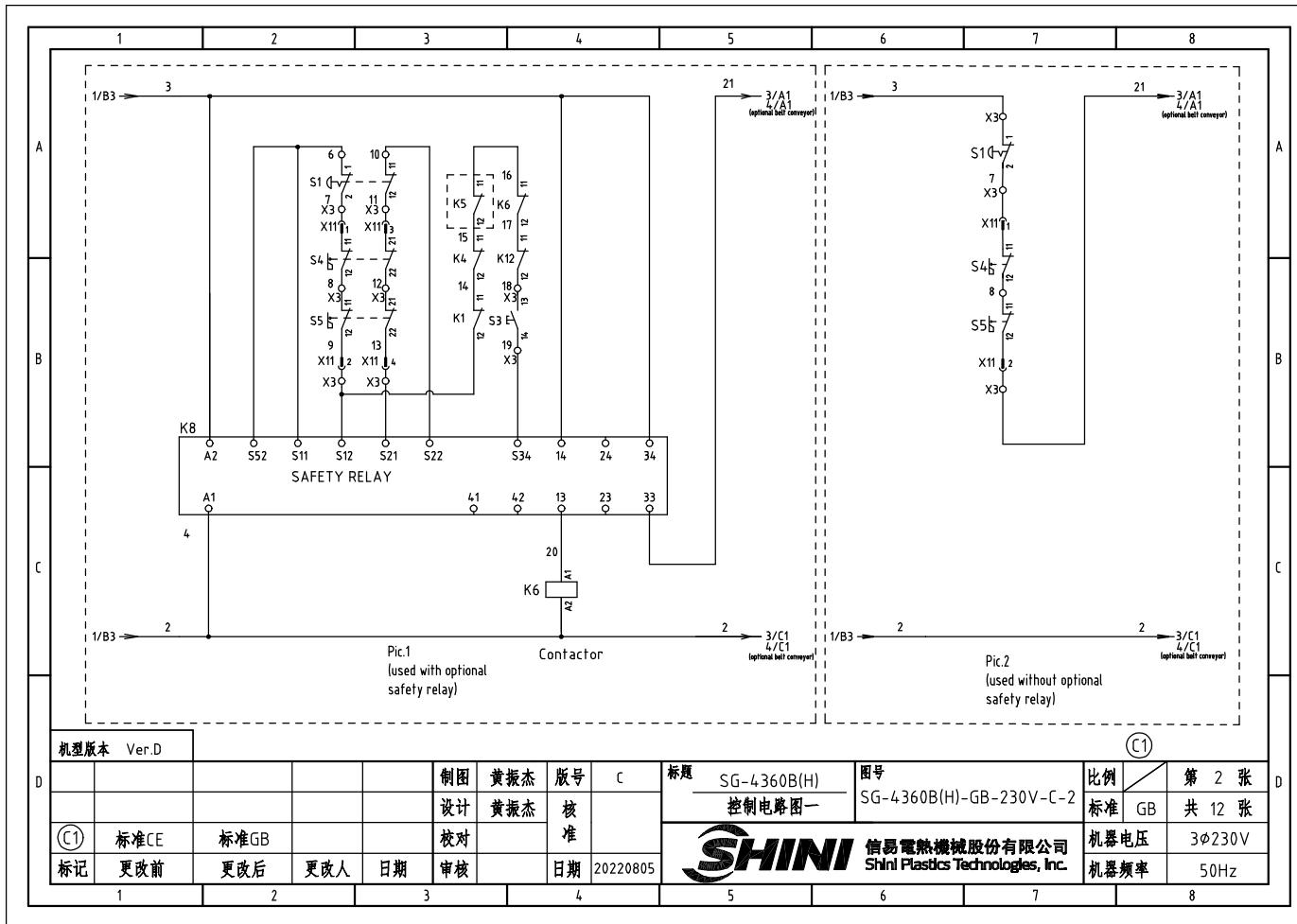
SYMBOL	(a)	(b)	(c)	(d)	(e)	(f)
MODE	110	50	160	45-63	55	16
SG-4360B	137	70	160	57-75	70	25

SYMBOL	(g)	(h)	(i)	(j)
MODE (options)	20	7-10	8.1	1.5
Conveying blower	27-32	28	6	

机型版本 Ver.D

制图	黄振杰	版号	C
设计	黄振杰	核准	
校对		日期	20220805
标记	更改前	更改后	更改人
	更改后	更改人	日期

标题	SG-4360B(H)	图号	SG-4360B(H)-GB-230V-C-1	比例	第 1 张
	主电路图			标准	共 12 张
信易塑料机械股份有限公司 Shini Plastics Technologies, Inc.			机器电压	3φ230V	
			机器频率	50Hz	



机型版本 Ver.D

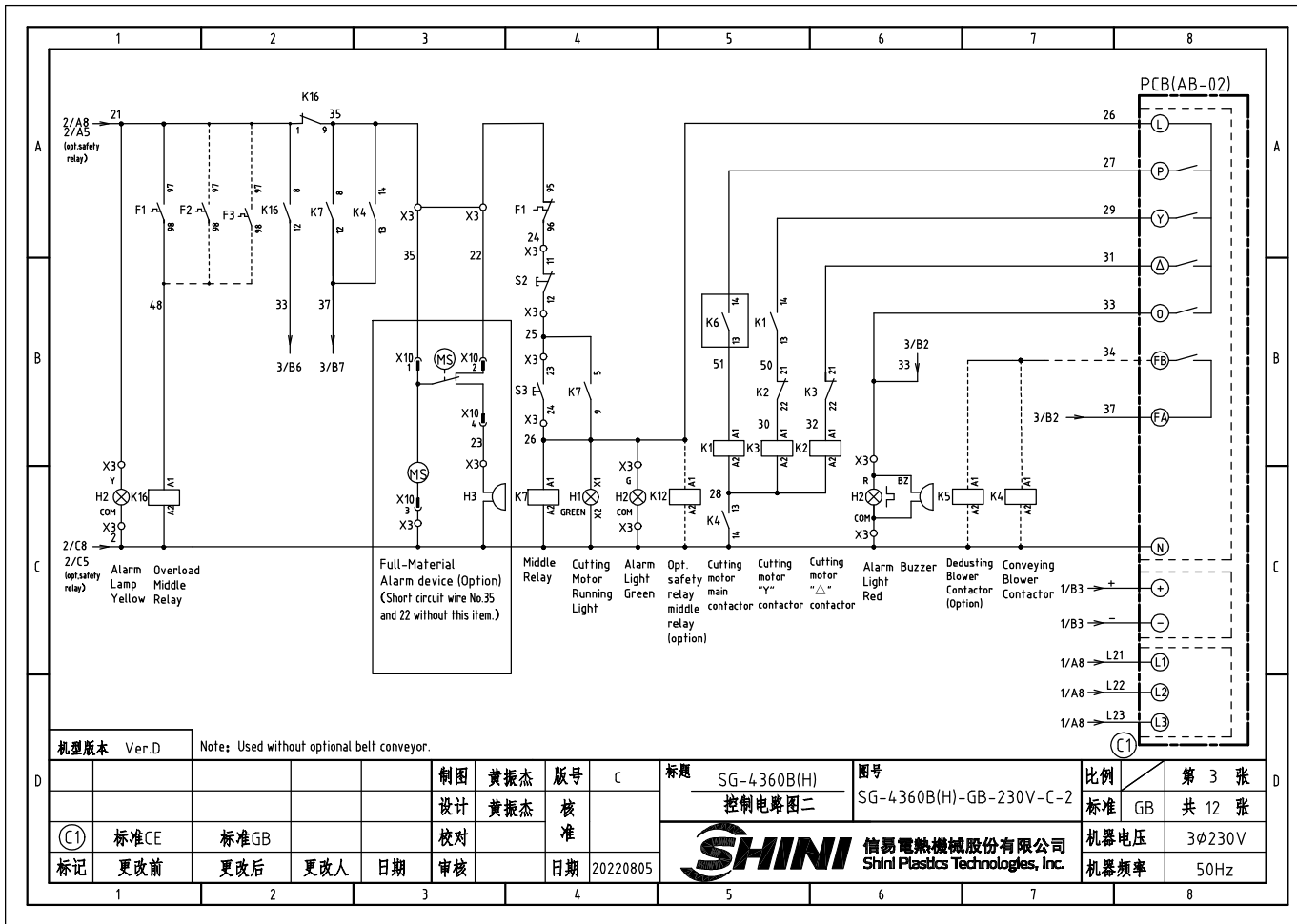
制图	黄振杰	版号	C
设计	黄振杰	核 准	
校对		日期	20220805
标记	更改前	更改后	更改人
	日期	审核	

标题 SG-4360B(H) 控制电路图一
图号 SG-4360B(H)-GB-230V-C-2

SHINI 信易电热机械股份有限公司
Shini Plastics Technologies, Inc.

比例	第 2 张
标准	共 12 张
机器电压	3φ230V
机器频率	50Hz

1 2 3 4 5 6 7 8



机型版本 Ver.D

Note: Used without optional belt conveyor.

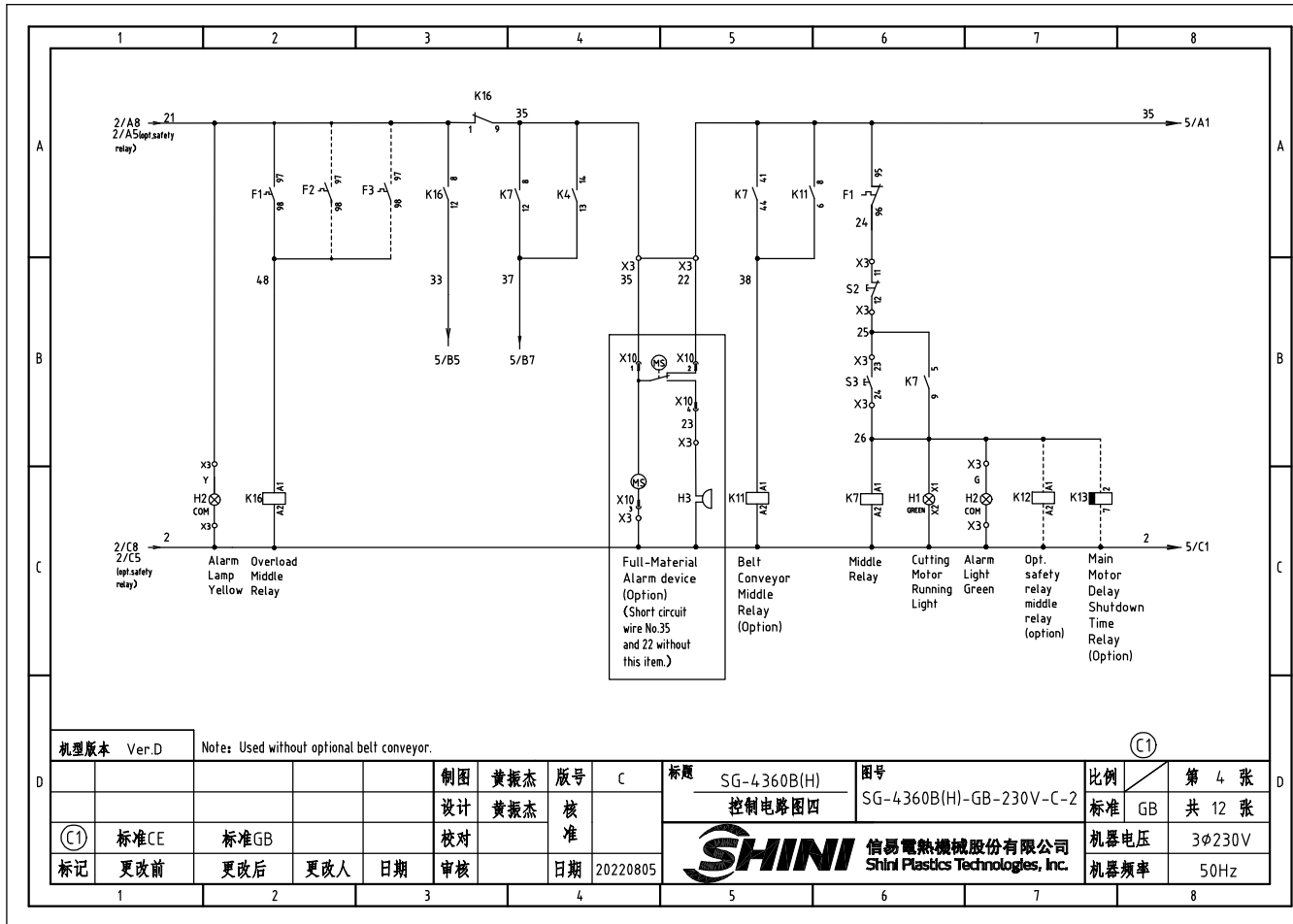
制图	黄振杰	版号	C
设计	黄振杰	核准	
校对		日期	20220805
审核		日期	20220805

标题 SG-4360B(H)
控制电路图二

图号 SG-4360B(H)-GB-230V-C-2

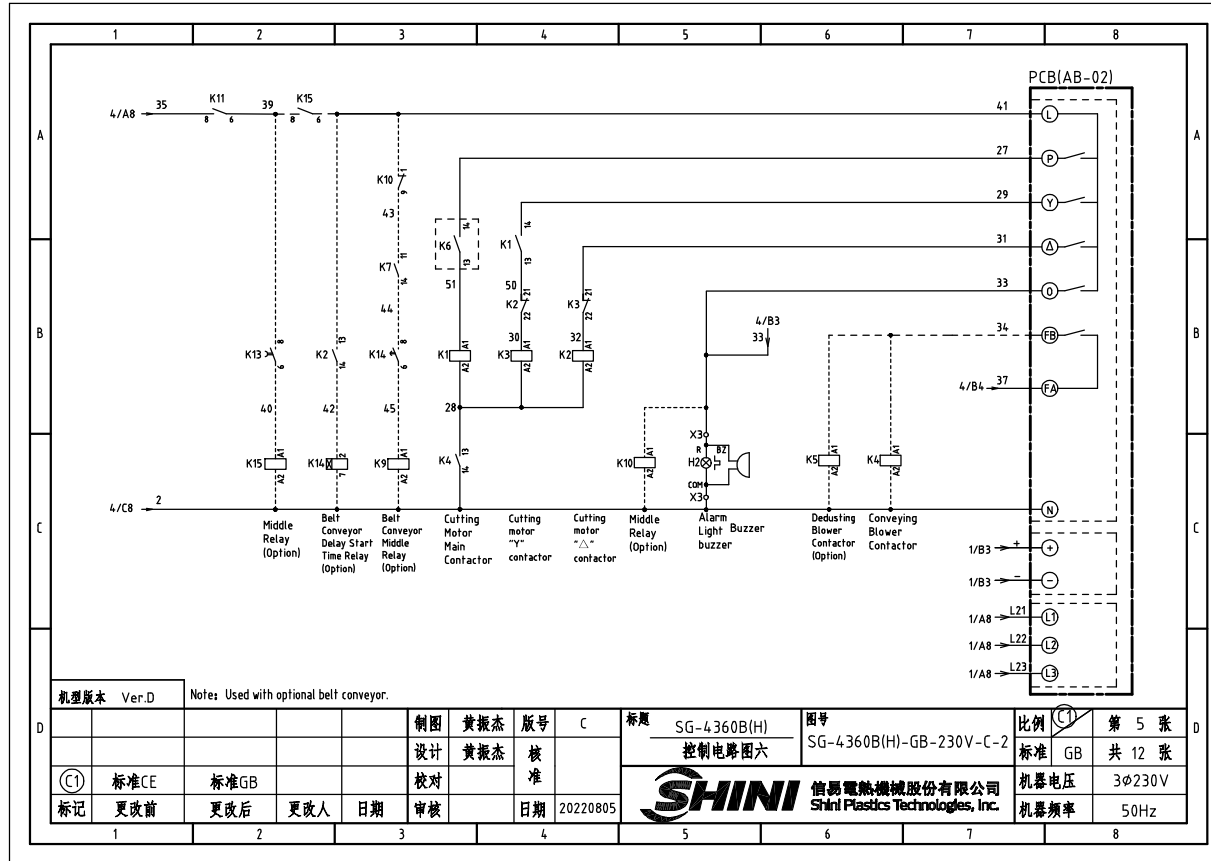
比例	第3张
标准	GB 共12张
机器电压	3φ230V
机器频率	50Hz

SHINI 信易电热机械股份有限公司
Shini Plastics Technologies, Inc.

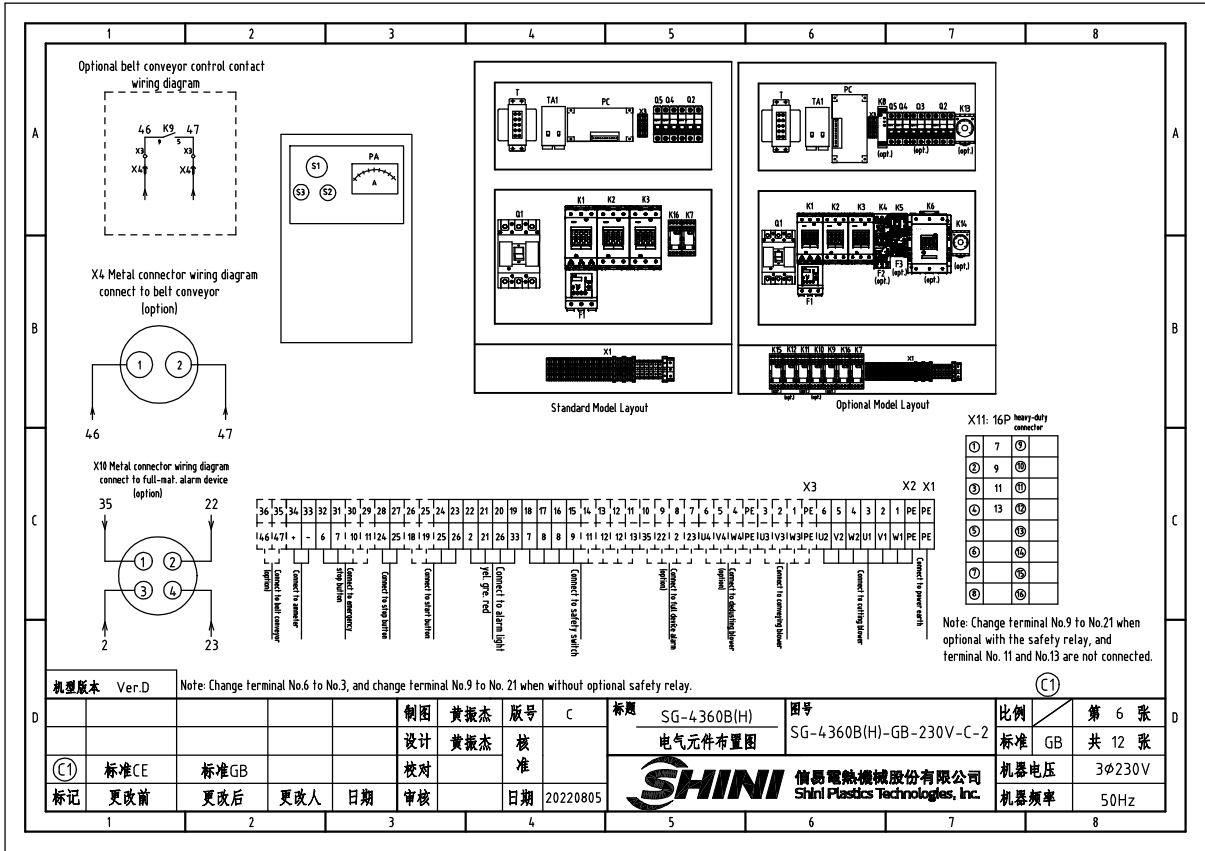


机型版本 Ver.D		Note: Used without optional belt conveyor.			标题 SG-4360B(H)		图号 SG-4360B(H)-GB-230V-C-2		比例 第 4 张	
					设计 黄振杰		核 准		标准 GB 共 12 张	
① 标准CE		标准GB			校 对		日 期		机器电压 3φ230V	
标记 更改前		更改后 更改人			审 核		日期 20220805		机器频率 50Hz	

SHINI 信易电热机械股份有限公司
Shini Plastics Technologies, Inc.



机型版本	Ver.D	Notes: Used with optional belt conveyor.			制图	黄振杰	版号	C	标题	SG-4360B(H)	图号	SG-4360B(H)-GB-230V-C-2	比例	1:1	第 5 张
					设计	黄振杰	核		控制电路图六			标准	GB	共 12 张	
标准	CE	标准	GB		校对		核					机器的电压	3φ230V		
标记	更改前	更改后	更改人	日期	审核		日期	20220805	SHINI	信易电热机械股份有限公司	Shini Plastics Technologies, Inc.	机器的频率	50Hz		



机罩版本 Ver:D Note: Change terminal No.6 to No.3, and change terminal No.9 to No. 21 when without optional safety relay.

机罩版本 Ver:D		标准CE		标准GB		制图 黄振杰		版号 C		标题 SG-4360B(H)		图号 SG-4360B(H)-GB-230V-C-2		比例 第 6 张	
标记		更改前		更改后		更改人		日期		20220805		SHINI 信易电热机械股份有限公司 Shini Plastics Technologies, Inc.		标准 GB 共 12 张	
核对		审核		日期		日期		日期		日期		机器电压 3φ230V		机器频率 50Hz	

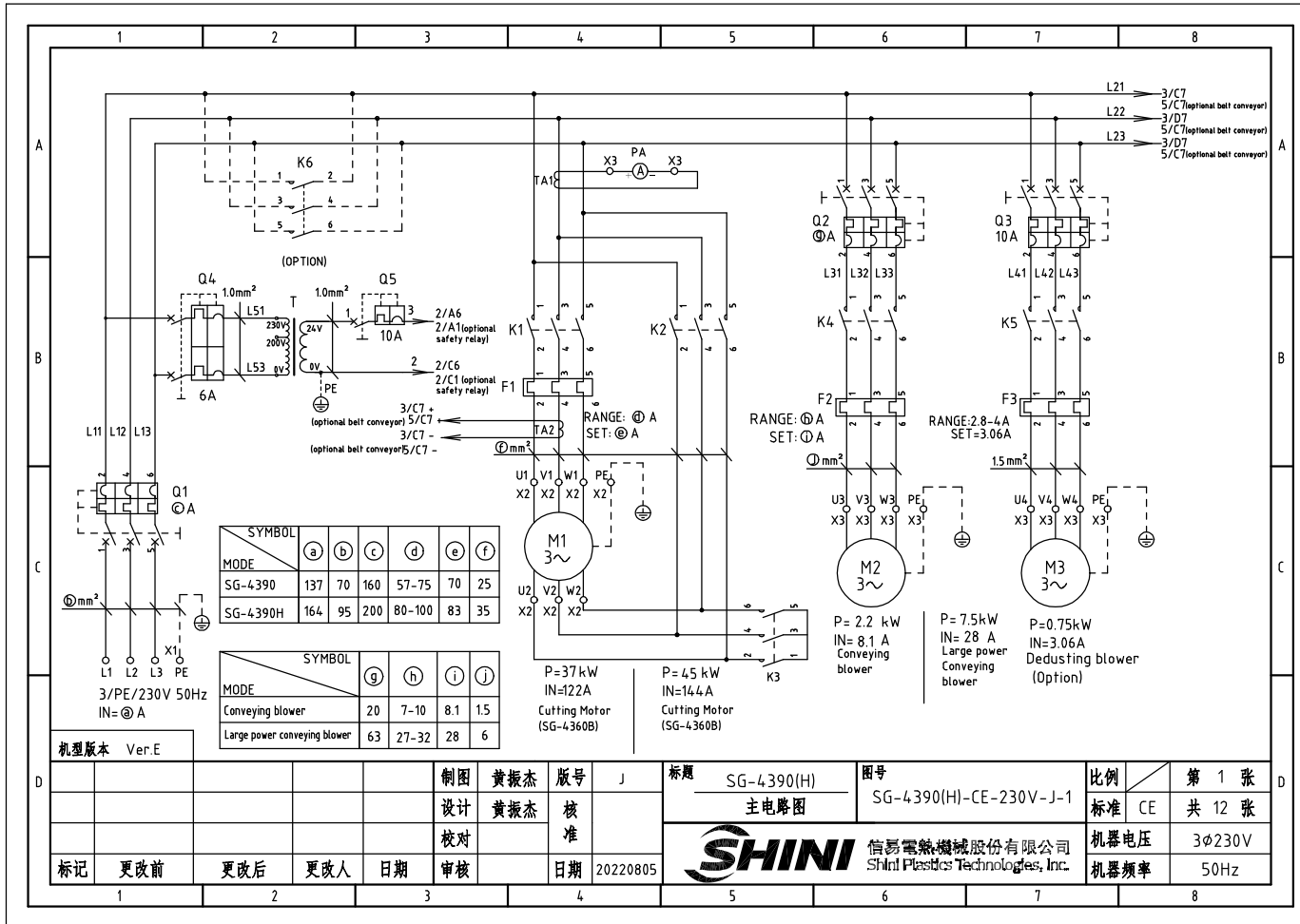
1		2		3		4		5		6		7		8	
NO.	Symbol	Name		Manufacturer		Type		Specification		Number	Material number		Remark		
A	1	Q1	Breaker interlock		TECO		TAX-250L3160 3P		160A		1	YE40250300400			
	2		Circuit breaker ext. handler		TECO		FB1R-CS1-C-DI(TAX-250)		----		1	YE90211200300			
	3	Q2	Circuit breaker		TECO		BM-63C/3020S		20A		1	YE40302003000		(7)	
	4	Q2	Circuit breaker		TECO		BM-63C/3P		63A		1	YE40306303000		(6)	
	5	Q3	Circuit breaker		TECO		BM-63C/3010S		10A		1	YE40301003000		(2)	
	6	Q4	Circuit breaker		TECO		BM-63C/2006S 2P		6A		1	YE4.02006000000			
	7	Q5	Circuit breaker		TECO		BM-63C/1010S 1P		10A		1	YE4.01010000100			
B	8	K1,K2	Contactor		SIEMENS		3RT5045-1AC20		80A 24VAC 50/60Hz		2	YE00504502600			
	9		Auxiliary contact		SIEMENS		3RH5921-1CA01		1NC		1	YE00592110100		(4)	
	10		Auxiliary contact		SIEMENS		3RH5921-1CA01		1NC		1	YE00592110100			
	11		Auxiliary contact		SIEMENS		3RH5921-1CA10		1NO		1	YE00592110000		(5)	
	12		Auxiliary contact		SIEMENS		3RH5921-1CA10		1NO		1	YE00592110000			
	13	K3	Contactor		SIEMENS		3RT5044-1AC20		65A 24VAC 50/60Hz		1	YE00504402600			
	14	K4	Contactor		SIEMENS		3RT6017-1AB01		12A 24VAC 50/60Hz		1	YE00601702500		(7)	
C	15	K4	Contactor		SIEMENS		3RT6028-1AC20		38A 24VAC 50/60Hz		1	YE00602802600		(6)	
	16		Auxiliary contact		SIEMENS		3RH6911-1HA11		1NC+1NO		1	YE00691100100			
	17	K5	Contactor		SIEMENS		3RT6016-1AB02		9A 24VAC 50/60Hz		1	YE00601602600		(2)	
	18	K6	Contactor		SIEMENS		3RT5054-1AB36		115A 24VAC 50/60Hz		1	YE00505400900		(4)	
	19		Auxiliary contact		SIEMENS		3RH5921-1CA01		1NC		1	YE00592110100		(4)	
	20		Auxiliary contact		SIEMENS		3RH5921-1CA10		1NO		1	YE00592110000		(4)	
	21	K7	Middle relay		Honeywell		GR-2C-AC24V		24VAC		1	YE03022400300			
22	K7	Middle relay		Honeywell		GR-4C-AC24V		24VAC		1	YE03042400300		(5)		
23	K8	Safety relay		PILZ		PNOZ×2.8P		24V AC/DC		1	YE04023000000		(4)		
24	T	Mutual transformer		----		IN=230/200V OUT=24VAC		300VA		1	YE70023005000				
25	K9 K10 K11 K15	Middle relay		Honeywell		GR-2C-AC24V		24VAC		4	YE03022400300		(5)		
机型版本 Ver.D Notes:(1)Materials not in the control box;(2)Optional de-dust motor accessories;(3)Optional full mat. alarm ;(4)Optional safety relay; (5) Optional belt conveyor;(6) Optional large motor:															
D					制图 黄振杰		版号 C		标题 SG-4360B		图号 SG-4360B(H)-GB-230V-C-2		比例 第 7 张		
					设计 黄振杰		核 准		电气元件明细一		标准 GB		共 12 张		
	① 标准CE		标准GB		校对				 信易电热机械股份有限公司 Shini Plastics Technologies, Inc.		机器电压		3φ230V		
	标记 更改前		更改后		更改人		日期				20220805		机器频率		50Hz
1		2		3		4		5		6		7		8	

1		2		3		4		5		6		7		8	
NO.	Symbol	Name		Manufacturer	Type		Specification		Number	Material number		Remark			
26	K12	Middle relay		Honeywell	GR-2C-AC24V		24VAC		1	YE030224.00300		(4)			
27	K13	Timer		YUYUN	TRF-N/3M		24VAC		1	YE860324.00000		(5)			
28	K14	Timer		YUYUN	TH3A-NAB 60S		24VAC		1	YE866024.00300		(5)			
29	F1	Thermal overload relay		SIEMENS	3RU5146-4JB0		45-63A		1	YE0151464.0000					
30	F2	Thermal overload relay		SIEMENS	3RU6116-1JB0		7-10A		1	YE01167100000		(7)			
31	F2	Thermal overload relay		SIEMENS	3RU6126-4EB0		27-32A		1	YE01612600600		(6)			
32	F3	Thermal overload relay		SIEMENS	3RU1116-1EB0		2.8-4A		1	YE01160280000		(2)			
33	K16	Middle relay		Honeywell	GR-2C-AC24V		24VAC		1	YE030224.00300					
34	S1	Emergency stop button		SCHNEIDER	XB2BS542C		400VAC		1	YE11254200000		(1)			
35		Contact block		SCHNEIDER	ZB2BE102C		1NC		1	YE00210203100		(1)(4)			
36	S2	Stop button		SCHNEIDER	XB2BA22C		400VAC		1	YE11222000000		(1)			
37	S3,H1	Start button (with light)		SCHNEIDER	XB2BW33B1C		24VAC		1	YE11233100000		(1)			
38		Contact block		SCHNEIDER	ZB2BE101C		1NO		1	YE00210103100		(1)(4)			
39	S4,S5	Safety switch		SCHMERSRC	AZ15-02ZVRK-1476		24VAC		2	YE16147600100		(1)			
40	S4,S5	Safety switch		SCHMERSRC	AZ16-02ZVRK-1476		24VAC		2	YE16147600000		(1)(4)			
41	H2	3-color alarm lamp		SHINI	red, gre.,yel,+buzzer		24VAC/DC 50/60Hz		1	BL900024.01520		(1)			
42	H3	Buzzer		TEND	EA-2		24VAC		1	YE8424.0200000		(1)(3)			
43	MS	Mat. level motor		SHINI	SR-80		24VAC		1	YE158024.00100		(1)(3)			
44	X1	Terminal board		Honeywell	GK35PE		35mm ² PE		1	YE60003503500					
45	X2	Terminal board		Honeywell	GK16		16mm ²		6	YE60001603200					
46		Terminal board		Honeywell	GK16PE		16mm ² PE		1	YE60001603500					
47	X3	Terminal board		Honeywell	SK2.5		2.5mm ²		21	YE60002503200					
48				Honeywell	GK2.5PE		2.5mm ² PE		1	YE60002503400					
49				Honeywell	SK2.5		2.5mm ² PE		5	YE60002503200		(2)			
50				Honeywell	GK2.5PE		2.5mm ² PE		1	YE60002503400		(2)			
机型版本 Ver.D Notes:1)Materials not in the control box;2)Optional de-dust motor accessories;3)Optional full mat. alarm;4)Optional safety relay; 5) Optional belt conveyor;6) Optional conveying option;7)Optional large power conveying motor;															
				制图	黄振杰	版号	C	标题 SG-4360B		图号 SG-4360B(H)-GB-230V-C-2		比例	第 8 张	D	
				设计	黄振杰	核		电气元件明细二		标准	GB	共 12 张			
				校对		准		 信易電機機械股份有限公司 Shini Plastics Technologies, Inc.		机器电压	3φ230V				
				审核		日期	20220805			机器频率	50Hz				
1	2	3	4	5	6	7	8								

1		2		3		4		5		6		7		8	
NO.	Symbol	Name		Manufacturer	Type	Specification		Number	Material number		Remark				
51				Honeywell	SK2.5	2.5mm ²		4	YE60002503200		(3)				
52				Honeywell	SK2.5	2.5mm ²		2	YE60002503200		(5)				
53				Honeywell	SK2.5	2.5mm ²		8	YE60002503200		(4)				
54				Honeywell	SK6	6mm ²		3	YE60000603200		(6)				
55				Honeywell	SK6PE	6mm ² PE		1	YE60000603500		(6)				
56		Terminal fittings E/GK series		Honeywell	----	PCS		4	YE60000003900						
57	X4	Metal connector		SHINI	PLT-162-RR(plug)	2P		1	YE68016200100		(1)(5)				
58	X10	Metal connector		SHINI	PLT-254-PM	4P		1	YE68025400000		(1)(3)				
59		Metal connector		SHINI	PLT-254-RF	4P		1	YE68025400100		(1)(3)				
60	X11	Heavy duty connector		HARTING	16P+PE(plug+socket)	16P		1	YE68001601300		(1)				
61	PCB	Microcomputer board/PCB		YUYUN	AB-02	24VAC		1	YE80022400100						
62		Plastic shell SI-4T for circuit board		----	----	----		1	YR40000400100						
63	PA	Ammeter		SFIM	DH-670	100/5A		1	YE25671000000		(1)				
64	TA1	Current mutual transformer		RATIO	RQT-10	100/5A		1	YE04100500000						
65	TA2	Current mutual transformer		YUYUN	----	5-100A		1	----		with circuit board				
66	M1	Cutting motor		----	----	400V 50Hz 30kW		1	----		(1)				
67	M2	Conveying blower		----	----	400V 50Hz 2.2kW		1	----		(1)				
68	M2	Conveying blower		----	----	400V 50Hz 7.5kW		1	----		(1)(6)				
69	M3	De-dust blower		----	----	400V 50Hz 0.75kW		1	----		(1)(2)				
机型版本 Ver.D Notes:(1)Materials not in the control box;(2)Optional de-dust motor accessories;(3)Optional full mat. alarm ;(4)Optional safety relay; (5) Optional belt conveyor;(6)Optional large blower power; (7) Optional conveying blower; (C1)															
				制图 黄振杰		版号 C		标题 SG-4360B		图号 SG-4360B(H)-GB-230V-C-2		比例 第 9 张		D	
				设计 黄振杰		核 准		电气元件明细三		标准 GB		共 12 张			
(C1)		标准CE		标准GB		校 对		 信易電機機械股份有限公司 Shini Plastics Technologies, Inc.		机器电压		3φ230V			
标记		更改前		更改后		更改人				日期		机器频率		50Hz	
1		2		3		4		5		6		7		8	

1		2		3		4		5		6		7		8	
NO.	Symbol	Name		Manufacturer		Type		Specification		Number	Material number		Remark		
1	Q1	Breaker interlock		TECO		TAX-250L3160 3P		160A		1	YE402503004.00				
2		Circuit breaker ext. handler		TECO		FB1R-CS1-C-D1(TAX-250)		----		1	YE90211200300				
3	Q2	Circuit breaker		TECO		BM-63C/3020S		20A		1	YE40302003000		(7)		
4	Q2	Circuit breaker		TECO		BM-63C/3P		63A		1	YE40306303000		(6)		
5	Q3	Circuit breaker		TECO		BM-63C/3P		6A		1	YE40300603000		(2)		
6	Q4	Circuit breaker		TECO		BM-63C/2006S 2P		6A		1	YE40200600000				
7	Q5	Circuit breaker		TECO		BM-63C/1010S 1P		10A		1	YE40101000100				
8	K1,K2	Contactor		SIEMENS		3RT5046-1AC20		95A 24VAC 50/60Hz		2	YE00504602600				
9		Auxiliary contact		SIEMENS		3RH5921-1CA10		1NO		1	YE00592110000				
10	K3	Contactor		SIEMENS		3RT5045-1AC20		80A 24VAC 50/60Hz		1	YE00504502600				
11		Auxiliary contact		SIEMENS		3RH5921-1CA01		1NC		2	YE00592110100				
12		Auxiliary contact		SIEMENS		3RH5921-1CA10		1NO		1	YE00592110000		(5)		
13		Auxiliary contact		SIEMENS		3RH5921-1CA01		1NC		1	YE00592110100		(4)		
14	K4	Contactor		SIEMENS		3RT6017-1AB01		12A 24VAC 50/60Hz		1	YE00601702500		(7)		
15	K4	Contactor		SIEMENS		3RT6028-1AC20		38A 24VAC 50/60Hz		1	YE00602802600		(6)		
16		Auxiliary contactor		SIEMENS		3RH6911-1HA11		1NC+1NO		1	YE00691100100				
17	K5	Contactor		SIEMENS		3RT6016-1AB02		9A 24VAC 50/60Hz		1	YE00601602600		(2)		
18	K6	Contactor		SIEMENS		3RT5055-6AB36		150A 24VAC 50/60Hz		1	YE00505500600		(4)		
19		Auxiliary contactor		SIEMENS		3RH5921-1CA01		1NC		1	YE00592110100		(4)		
20		Auxiliary contactor		SIEMENS		3RH5921-1CA10		1NO		1	YE00592110000		(4)		
21	K7	Middle relay		Honeywell		GR-2C-AC24V		24VAC		1	YE03022400300				
22	K7	Middle relay		Honeywell		GR-4C-AC24V		24VAC		1	YE03042400300		(5)		
23	K8	Safety relay		PILZ		PNOZ×2.8P		24V AC/DC		1	YE04023000000		(4)		
24	K9 K10 K11 K15	Middle relay		Honeywell		GR-2C-AC24V		24VAC		4	YE03022400300		(5)		
25	K12	Middle relay		Honeywell		GR-2C-AC24V		24VAC		1	YE03022400300		(4)		
机型版本 Ver.D Notes:1)Materials not in the control box;2)Optional de-dust motor accessories;3)Optional full mat. alarm ;4)Optional safety relay; 5) Optional belt conveyor;6)Optional large blower power; (7) Optional conveying blower;															
制图 黄振杰 版号 C				标题 SG-4360BH				图号 SG-4360B(H)-GB-230V-C-10				比例 1:1		第 10 张	
设计 黄振杰 核 准				电气元件明细一				SHINI 信易電機機械股份有限公司 Shini Plastics Technologies, Inc.				标准 GB		共 12 张	
C1 标准CE		标准GB		校对		日期 20220805		SHINI 信易電機機械股份有限公司 Shini Plastics Technologies, Inc.				机器电压 3φ230V			
标记 更改前		更改后		更改人		日期						机器频率 50Hz			
1		2		3		4		5		6		7		8	

1		2		3		4		5		6		7		8											
NO.	Symbol	Name		Manufacturer	Type		Specification		Number	Material number		Remark													
26	K13	Timer		YUYUN	TRF-N/3M		24VAC		1	YE86032400000		(5)													
27	K14	Timer		YUYUN	TH3A-NAB 60S		24VAC		1	YE86602400300		(5)													
28	F1	Thermal overload relay		SIEMENS	3RU5146-4KB0		57-75A		1	YE01514650000															
29	F2	Thermal overload relay		SIEMENS	3RU6116-1JB0		7-10A		1	YE01167100000		(7)													
30	F2	Thermal overload relay		SIEMENS	3RU6126-4EB0		27-32A		1	YE01612600600		(6)													
31	F3	Thermal overload relay		SIEMENS	3RU1116-1EB0		2.8-4A		1	YE01160280000		(2)													
32	K16	Middle relay		Honeywell	GR-2C-AC24V		24VAC		1	YE03022400300															
33	S1	Emergency stop button		SCHNEIDER	XB2BS542C		400VAC		1	YE11254200000		(1)													
34		Contact block		SCHNEIDER	ZB2BE102C		1NC		1	YE00210203100		(1)(4)													
35	S2	Stop button		SCHNEIDER	XB2BA22C		400VAC		1	YE11222000000		(1)													
36	S3,H1	Start button (with light)		SCHNEIDER	XB2BW33B1C		24VAC		1	YE11233100000		(1)													
37		Contact block		SCHNEIDER	ZB2BE101C		1NO		1	YE00210103100		(1)(4)													
38	S4,S5	Safety switch		SCHMERSRC	AZ16-02ZVRK-1476		230VAC		2	YE16147600000		(1)(4)													
39	S4,S5	Safety switch		SCHMERSRC	AZ15-02ZVRK-1476		230VAC		2	YE16147600100		(1)													
40	H2	3-color alarm lamp		SHINI	red, gre.,yel,+buzzer		24VAC/DC 50/60Hz		1	BL90002401520		(1)													
41	H3	Buzzer		TEND	EA-2		24VAC		1	YE84240200000		(1)(3)													
42	MS	Mat. level motor		SHINI	SR-80		24VAC		1	YE15802400100		(1)(3)													
43	T	Mutual transformer		----	IN=230/200V OUT=24VAC		300VA		1	YE70023005000															
44	TA1	Current mutual transformer		RATIO	RQT-35		100/5A		1	YE04100500000															
45	PA	Ammeter		SFIM	DH-670		100/5A		1	YE25671000000		(1)													
46	PCB	Microcomputer board/PCB		YUYUN	AB-02		24VAC		1	YE80022400100															
47		Plastic shell SI-4T for circuit board		----	----		----		1	YR40000400100															
48	TA2	Mutual transformer		YUYUN	----		5-100A		1	----		with circuit board													
49	X1	Terminal board		Honeywell	GK35PE		35mm ² PE		1	YE60003503500															
50	X2	Terminal board		Honeywell	GK35		35mm ²		6	YE60003503200															
机型版本		Ver.D		Notes:(1)Materials not in the control box;(2)Optional de-dust motor accessories;(3)Optional full mat. alarm ;(4)Optional safety relay; (5) Optional belt conveyor;(6)Optional large blower power; (7) Optional conveying blower;																					
D				制图		黄振杰		版号		C		标题		SG-4360BH		图号		SG-4360B(H)-GB-230V-C-11		比例		C1		第 11 张	
				设计		黄振杰		核				电气元件明细二		标准		GB				共 12 张					
C1		标准CE		标准GB				校				SHINI		信易塑料机械股份有限公司		机器电压		3φ230V							
标记		更改前		更改后		更改人		日期		审核		日期		20220805		Shini Plastics Technologies, Inc.		机器频率		50Hz					
1		2		3		4		5		6		7		8											



SYMBOL	a	b	c	d	e	f
MODE						
SG-4390	137	70	160	57-75	70	25
SG-4390H	164	95	200	80-100	83	35

SYMBOL	g	h	i	j
MODE				
Conveying blower	20	7-10	8.1	1.5
Large power conveying blower	63	27-32	28	6

机型版本 Ver.E

制图	黄振杰	版号	J
设计	黄振杰	核准	
校对		核准	
标记	更改前	更改后	更改人
	日期	日期	20220805

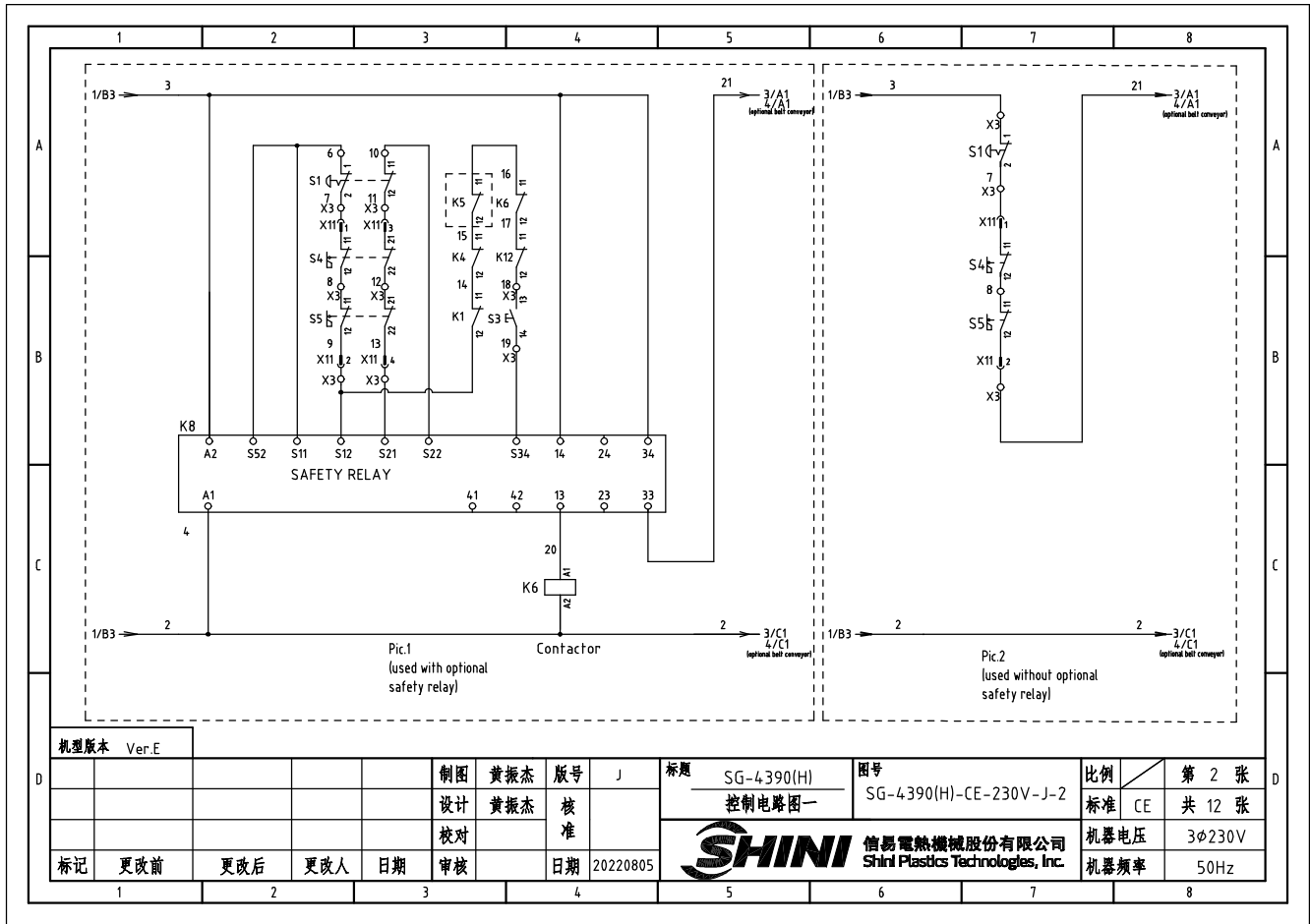
标题 SG-4390(H)
主电路图

图号 SG-4390(H)-CE-230V-J-1

比例 第 1 张
标准 CE 共 12 张

SHINI 信易电热机械股份有限公司
Shini Plastics Technologies, Inc.

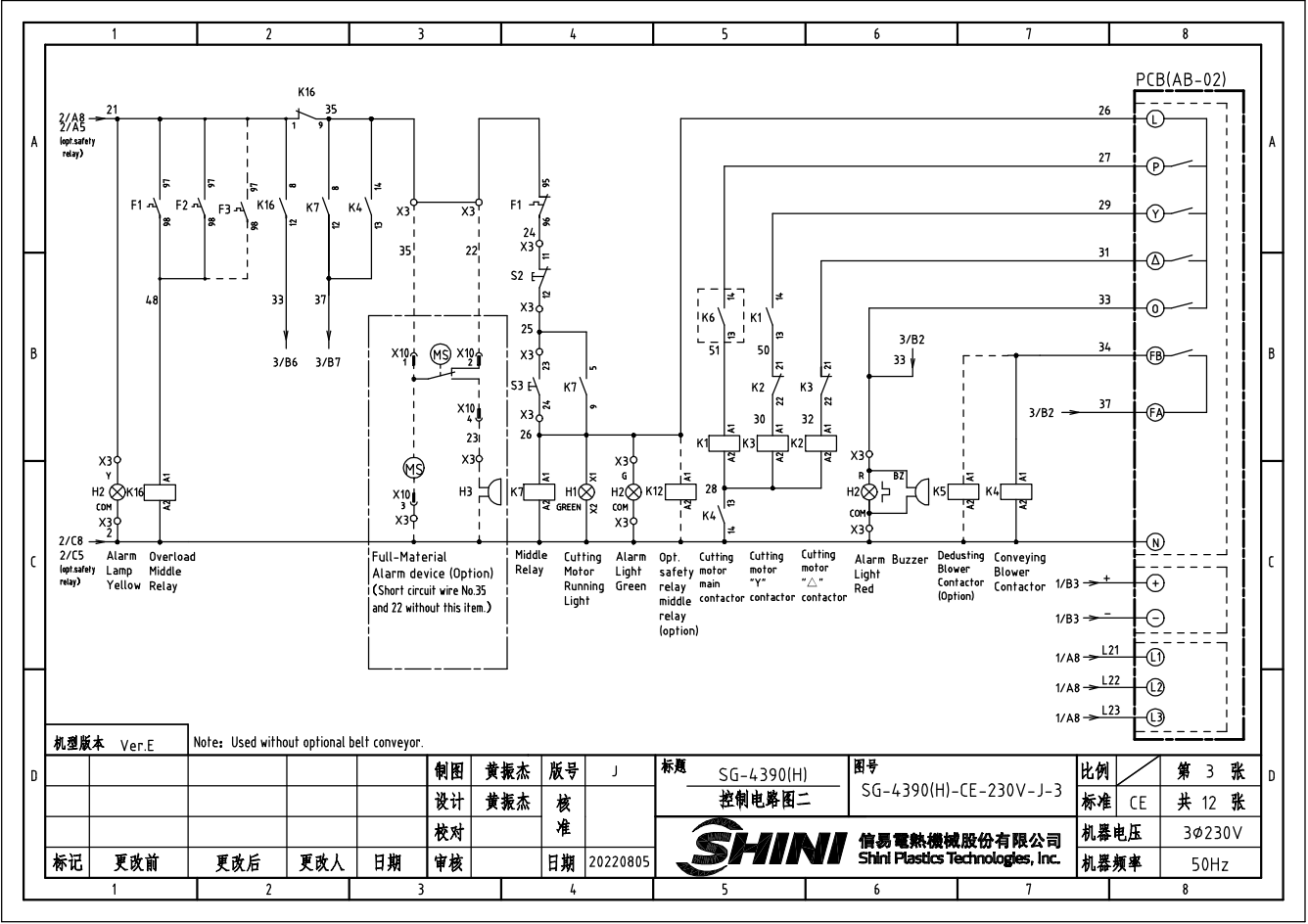
机器电压 3φ230V
机器频率 50Hz

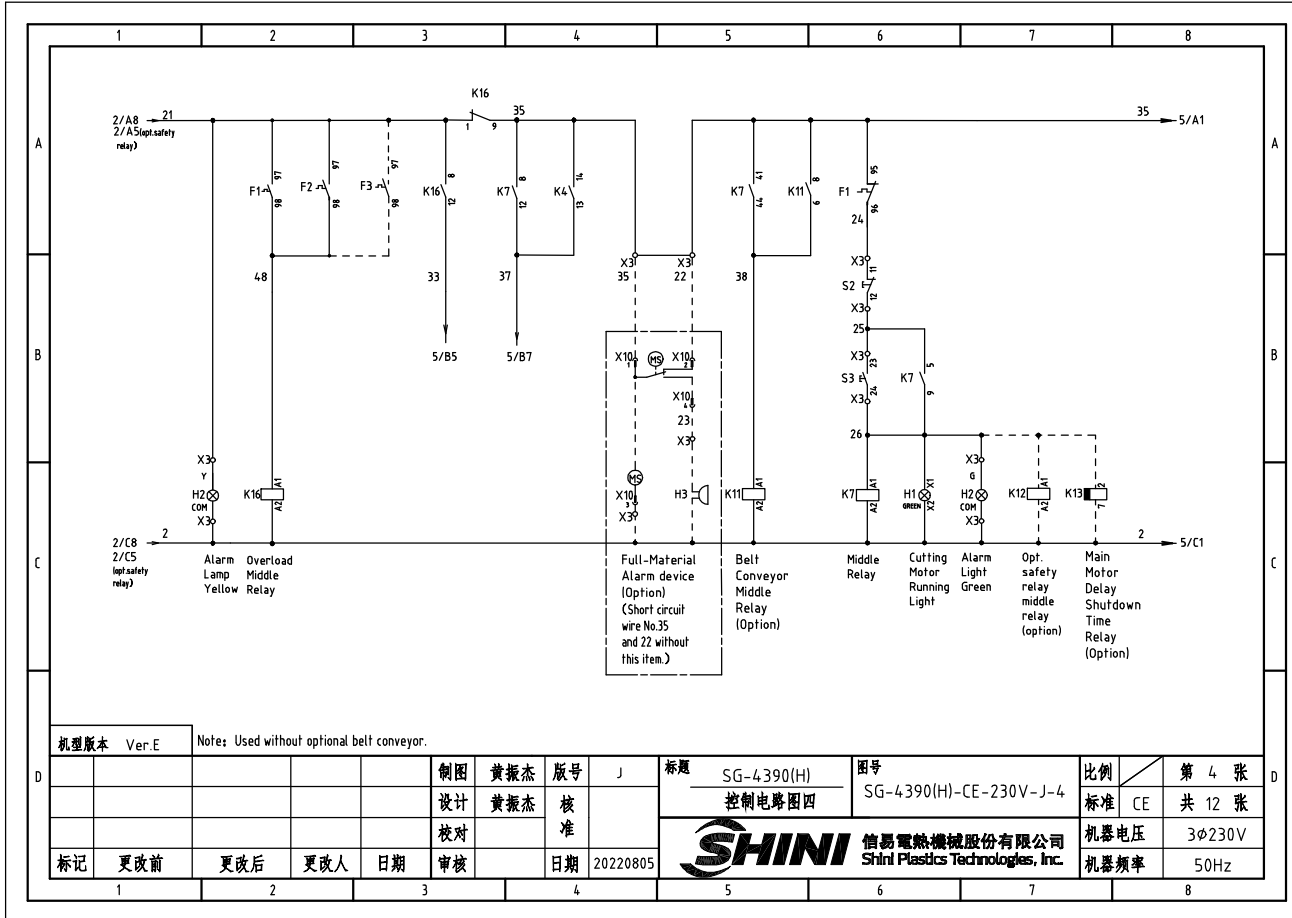


机型版本 Ver.E

				制图	黄振杰	版号	J	标题	SG-4390(H) 控制电路图一	图号	SG-4390(H)-CE-230V-J-2	比例	第 2 张
				设计	黄振杰	核		标准	CE	共 12 张			
				校对		准		机器电压	3φ230V				
				审核		日期	20220805	机器频率	50Hz				

1 2 3 4 5 6 7 8

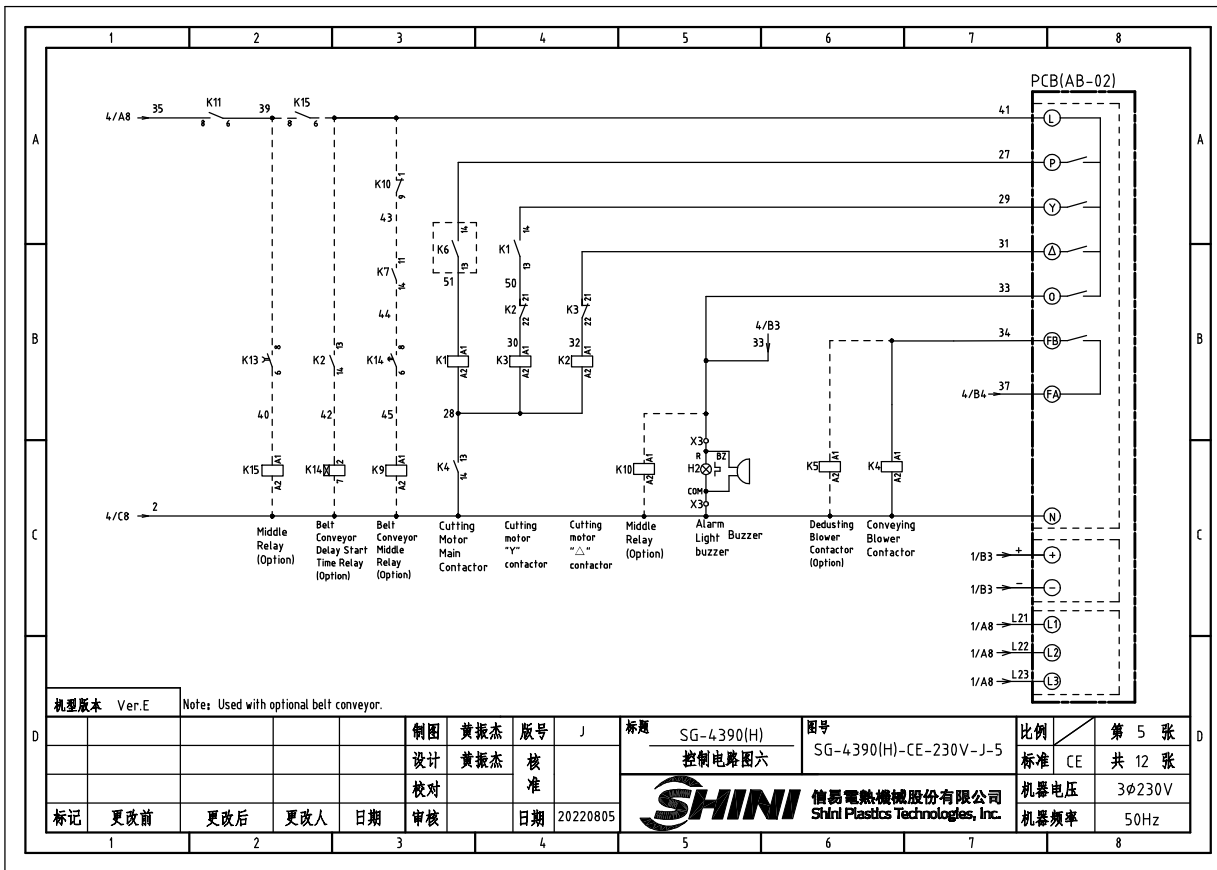


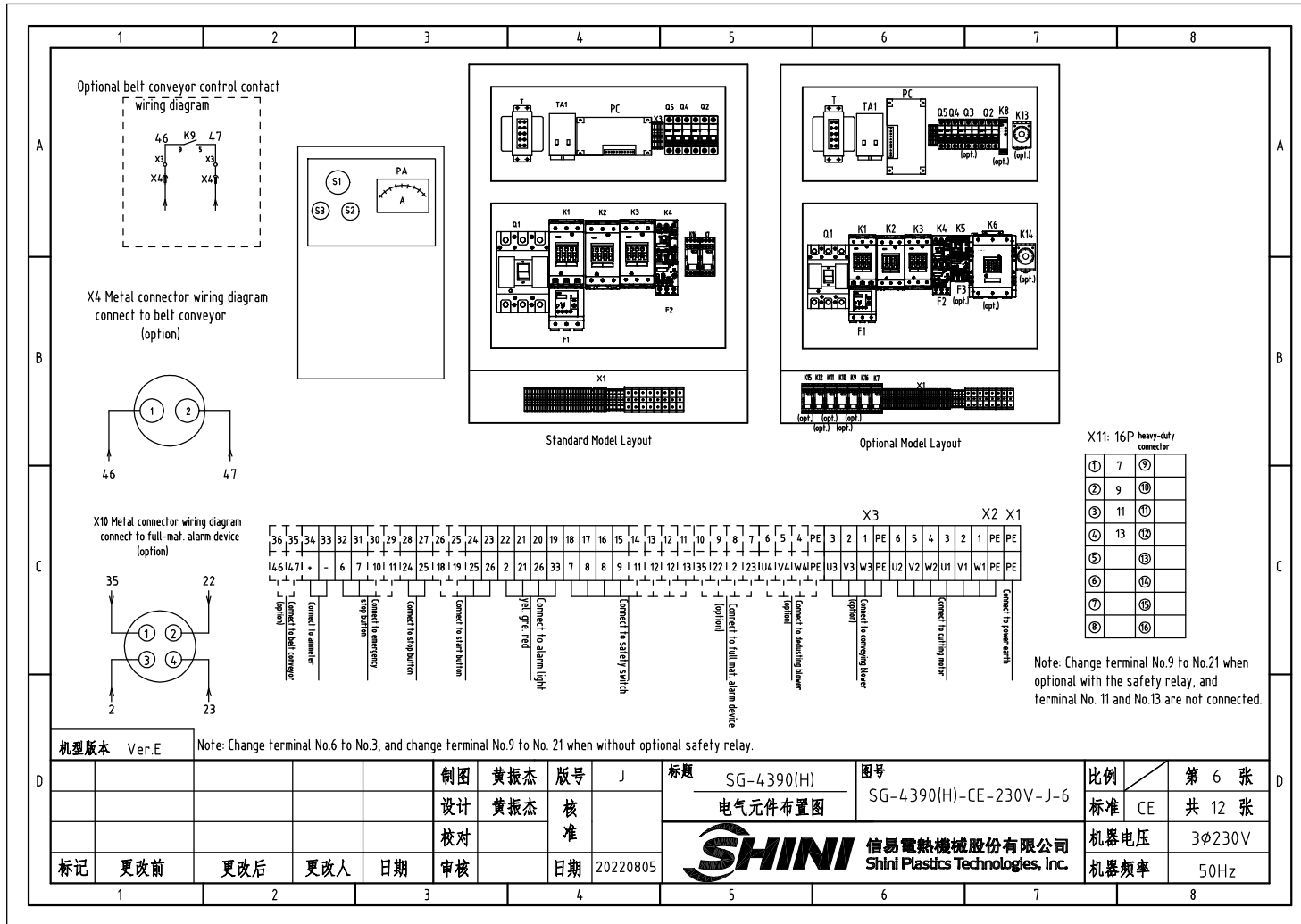


机型版本 Ver.E Note: Used without optional belt conveyor.

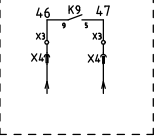
制图	黄振杰	版号	J	标题	SG-4390(H) 控制电路图四	图号	SG-4390(H)-CE-230V-J-4	比例	第 4 张
设计	黄振杰	核准						标准	CE 共 12 张
校对		日期	20220805					机器电压	3φ230V
标记	更改前	更改后	更改人	日期				机器频率	50Hz



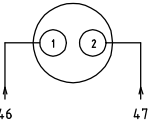




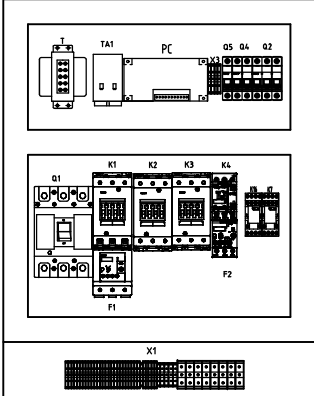
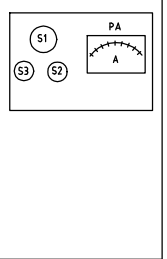
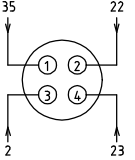
Optional belt conveyor control contact wiring diagram



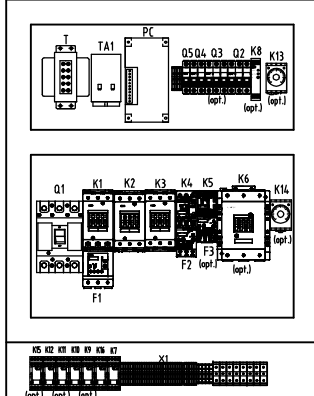
X4 Metal connector wiring diagram connect to belt conveyor (option)



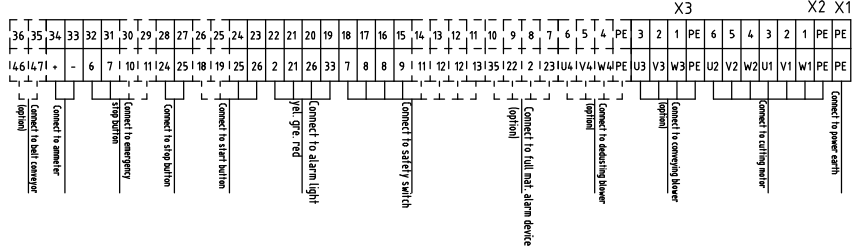
X10 Metal connector wiring diagram connect to full-mat. alarm device (option)



Standard Model Layout



Optional Model Layout



X11: 16P heavy-duty connector

①	7	⑦
②	9	⑨
③	11	⑪
④	13	⑬
⑤		⑭
⑥		⑮
⑦		⑯
⑧		⑰


Note: Change terminal No.9 to No.21 when optional with the safety relay, and terminal No. 11 and No.13 are not connected.

机型版本 Ver.E Note: Change terminal No.6 to No.3, and change terminal No.9 to No. 21 when without optional safety relay.

制图	黄振杰	版号	J
设计	黄振杰	核准	
校对		日期	20220805
标记	更改前	更改后	更改人

标题	SG-4390(H) 电气元件布置图	图号	SG-4390(H)-CE-230V-J-6	比例	第 6 张
				标准	CE 共 12 张
				机器电压	3φ230V
				机器频率	50Hz




1		2		3		4		5		6		7		8	
NO.	Symbol	Name		Manufacturer		Type		Specification		Number	Material number		Remark		
1	Q1	Breaker interlock		TECO		TAX-250L3160 3P		160A		1	YE40250300400				
2		Circuit breaker ext. handler		TECO		FB1R-CS1-C-D1(TAX-250)		----		1	YE90211200300				
3	Q2	Circuit breaker		TECO		BM-63C/3020S		20A		1	YE40302003000				
4	Q2	Circuit breaker		TECO		BM-63C/3P		63A		1	YE40306303000		(6)		
5	Q3	Circuit breaker		TECO		BM-63C/3010S		10A		1	YE40301003000		(2)		
6	Q4	Circuit breaker		TECO		BM-63C/2006S 2P		6A		1	YE40200600000				
7	Q5	Circuit breaker		TECO		BM-63C/1010S 1P		10A		1	YE40101000100				
8	K1,K2	Contactor		SIEMENS		3RT5046-1AC20		95A 24 VAC 50/60Hz		2	YE00504602600				
9		Auxiliary contact		SIEMENS		3RH5921-1CA10		1NO		1	YE00592110000				
10	K3	Auxiliary contact		SIEMENS		3RT5045-1AC20		80A 24 VAC 50/60Hz		1	YE00504502600				
11		Auxiliary contact		SIEMENS		3RH5921-1CA01		1NC		2	YE00592110100				
12		Auxiliary contact		SIEMENS		3RH5921-1CA10		1NO		1	YE00592110000		(5)		
13		Auxiliary Contactor		SIEMENS		3RH5921-1CA01		1NC		1	YE00592110100		(4)		
14	K4	Contactor		SIEMENS		3RT6025-1AC20		17A 24VAC 50/60Hz		1	YE00602502600				
15	K4	Contactor		SIEMENS		3RT6028-1AC20		38A 24VAC 50/60Hz		1	YE00602802600		(6)		
16		Auxiliary contact		SIEMENS		3RH6911-1HA11		1NC+1NO		1	YE00691100100				
17	K5	Contactor		SIEMENS		3RT6016-1AB02		9A 24 VAC 50/60Hz		1	YE00601602600		(2)		
18	K6	Contactor		SIEMENS		3RT5055-6AB36		150A 24 VAC 50/60Hz		1	YE00505500600		(4)		
19		Auxiliary contact		SIEMENS		3RH5921-1CA01		1NC		1	YE00592110100		(4)		
20		Auxiliary contact		SIEMENS		3RH5921-1CA10		1NO		1	YE00592110000		(4)		
21	K7	Middle relay		Honeywell		GR-2C-AC24V		24 VAC		1	YE03022400300				
22	K7	Middle relay		Honeywell		GR-4C-AC24V		24 VAC		1	YE03042400300		(5)		
23	K8	Safety relay		PILZ		PNOZ×2.8P		24V AC/DC		1	YE04023000000		(4)		
24	K9 K10 K11 K15	Middle relay		Honeywell		GR-2C-AC24V		24 VAC		4	YE03022400300		(5)		
25	K12	Middle relay		Honeywell		GR-2C-AC24V		24 VAC		1	YE03022400300		(4)		
机型版本 Ver.E		Notes:(1)Materials not inthe control box;(2)Optional de-dust motor accessories;(3)Optional full mat. alarm ;(4)Optional safety relay; (5) Optional belt conveyor;(6) Optional large power:													
D					制图	黄振杰	版号	J	标题	SG-4390	图号	SG-4390(H)-CE-230V-J-7	比例	第 7 张	
					设计	黄振杰	核		电气元件明细一			标准	CE	共 12 张	
					校对		准						机器电压	3φ230V	
	标记	更改前	更改后	更改人	日期	审核	日期	20220805		信易電熱機械股份有限公司 Shini Plastics Technologies, Inc.		机器频率	50Hz		
1		2		3		4		5		6		7		8	

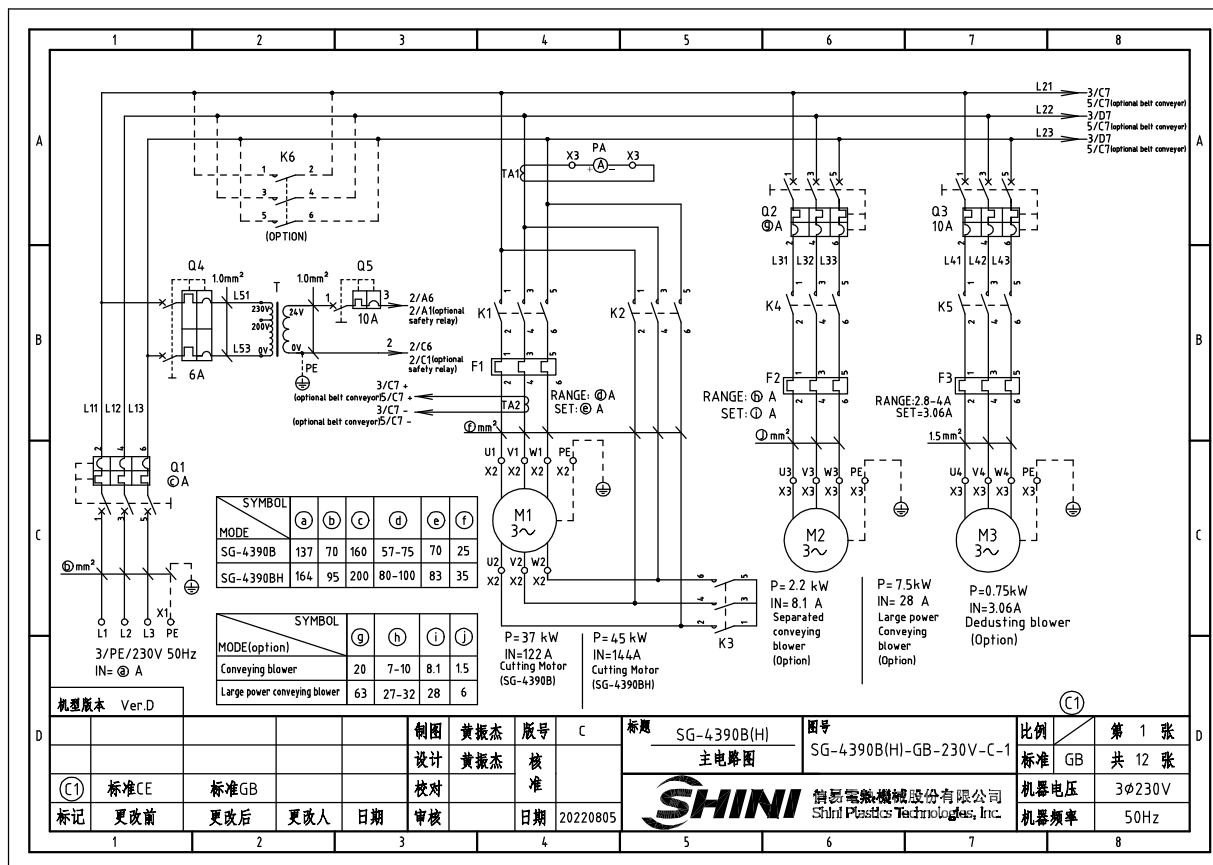
1		2		3		4		5		6		7		8	
NO.	Symbol	Name		Manufacturer	Type		Specification		Number	Material number		Remark			
26	K13	Timer		YUYUN	TRF-N/3M		24 VAC		1	YE86032400000		(5)			
27	K14	Timer		YUYUN	TH3A-NAB 60S		24 VAC		1	YE86602400300		(5)			
28	F1	Thermal overload relay		SIEMENS	3RU5146-4KB0		57-75A		1	YE01514650000					
29	F2	Thermal overload relay		SIEMENS	3RU6126-1JB0		7-10A		1	YE01260700000					
30	F2	Thermal overload relay		SIEMENS	3RU6126-4EB0		27-32A		1	YE01612600600		(6)			
31	F3	Thermal overload relay		SIEMENS	3RU1116-1EB0		2.8-4A		1	YE01160280000		(2)			
32	K16	Middle relay		Honeywell	GR-2C-AC24V		24 VAC		1	YE03022400300					
33	S1	Emergency stop button		SCHNEIDER	XB2BS542C		400VAC		1	YE11254200000		(1)			
34		Contact block		SCHNEIDER	ZB2BE102C		1NC		1	YE00210203100		(1)(4)			
35	S2	Stop button		SCHNEIDER	XB2BA22C		400VAC		1	YE11222000000		(1)			
36	S3,H1	Start button (with light)		SCHNEIDER	XB2BW33B1C		24 VAC		1	YE11233100000		(1)			
37		Contact block		SCHNEIDER	ZB2BE101C		1NO		1	YE00210103100		(1)(4)			
38	S4,S5	Safety switch		SCHMERSRC	AZ16-02ZVRK-1476		230VAC		2	YE16147600000		(1)(4)			
39	S4,S5	Safety switch		SCHMERSRC	AZ15-02ZVRK-1476		230VAC		2	YE16147600100		(1)			
40	H2	3-color alarm lamp		SHINI	red, gre.,yel,+buzzer		24 VAC/DC 50/60Hz		1	BL90002401520		(1)			
41	H3	Buzzer		TEND	EA-2		24 VAC		1	YE84240200000		(1)(3)			
42	MS	Mat. level motor		SHINI	SR-80		24 VAC		1	YE15802400100		(1)(3)			
43	T	Mutual transformer		----	IN=230/200V OUT=24VAC		300VA		1	YE70023005000					
44	TA1	Current mutual transformer		RATIO	RQT-35		100/5A		1	YE04100500000					
45	PA	Ammeter		SFIM	DH-670		100/5A		1	YE25671000000		(1)			
46	PCB	Micro computer board/PCB		YUYUN	AB-02		24 VAC		1	YE80022400100					
47		Plastic shell SI-4T for circuit board		----	----		----		1	YR40000400100					
48	TA2	Current mutual inductance		YUYUN	----		5-100A		1	----		with circuit board			
49	X1	Terminal board		Honeywell	GK35PE		35mm ² PE		1	YE60003503500					
50	X2	Terminal board		Honeywell	GK35		35mm ²		6	YE60003503200					
机型版本 Ver:E Notes:(1)Materials not in the control box,(2)Optional de-dust motor accessories,(3)Optional full mat. alarm ,(4)Optional safety relay; (5) Optional belt conveyor,(6) Optional large power:															
制图		黄振杰		版号		J		标题		SG-4390		图号		第 8 张	
设计		黄振杰		核				电气元件明细二		SG-4390(H)-CE-230V-J-8		比例		CE 共 12 张	
校对				准				 信易电热机械股份有限公司 Shini Plastics Technologies, Inc.		机器电压		3φ230V			
标记		更改前		更改后		更改人				日期		20220805		机器频率	

1		2		3		4		5		6		7		8	
NO.	Symbol	Name		Manufacturer		Type		Specification		Number	Material number		Remark		
51		Terminal board		Honeywell		GK16PE		16mm ² PE		1	YE60001603500				
52	X3	Terminal board		Honeywell		SK2.5		2.5mm ²		21	YE60002503200				
53				Honeywell		GK2.5PE		2.5mm ² PE		1	YE60002503400				
54				Honeywell		SK2.5		2.5mm ²		5	YE60002503200		(2)		
55				Honeywell		GK2.5PE		2.5mm ² PE		1	YE60002503400		(2)		
56				Honeywell		SK2.5		2.5mm ²		4	YE60002503200		(3)		
57				Honeywell		SK2.5		2.5mm ²		2	YE60002503200		(5)		
58				Honeywell		SK2.5		2.5mm ²		8	YE60002503200		(4)		
59				Honeywell		SK6		6mm ²		3	YE60000603200		(6)		
60				Honeywell		SK6PE		6mm ² PE		1	YE60000603500		(6)		
61		Terminal fittings E/GK series		Honeywell		----		PCS		4	YE60000003900				
62	X4	Metal connector		SHINI		PLT-162-RR(plug)		2P		1	YE68016200100		(1)(5)		
63	X10	Metal connector		SHINI		PLT-254-PM		4P		1	YE68025400000		(1)(3)		
64		Metal connector		----		PLT-254-RF		4P		1	YE68025400100		(1)(3)		
65	X11	Heavy duty connector		HARTING		16P+PE(plug+socket)		16P		1	YE68001601300		(1)		
65	M1	Cutting motor		----		----		400V 50Hz 37kW		1	----		(1)		
66	M2	Conveying blower		----		----		400V 50Hz 2.2kW		1	----		(1)		
67	M2	Conveying blower		----		----		400V 50Hz 7.5kW		1	----		(1)(6)		
68	M3	De-dust blower		----		----		400V 50Hz 0.75kW		1	----		(1)(2)		
机型版本 Ver.E		Notes:(1)Materials not in the control box;(2)Optional de-dust motor accessories;(3)Optional full mat. alarm ;(4)Optional safety relay; (5) Optional belt conveyor;(6) Optional large power:													
标记		更改前	更改后	更改人	日期	制图	黄振杰	版号	J	标题	SG-4390	图号	SG-4390(H)-CE-230V-J-9	比例	第 9 张
						设计	黄振杰	核准		电气元件明细三			标准	CE	共 12 张
						校对		核准			信易电热机械股份有限公司 Shini Plastics Technologies, Inc.		机器电压	3φ230V	
						审核		日期	20220805		机器频率	50Hz			

1		2		3		4		5		6		7		8		
NO.	Symbol	Name		Manufacturer		Type		Specification		Number	Material number		Remark			
A	1	Q1	Breaker interlock		TECO		TAX-250L3200 3P		200A		1	YE40250300500				
	2		Circuit breaker ext. handler		TECO		FB2R-CS1-C-D1(TAX-250)		----		1	YE90211200300				
	3	Q2	Circuit breaker		TECO		BM-63C/3020S		20A		1	YE40302003000				
	4	Q2	Circuit breaker		TECO		BM-63C/3P		63A		1	YE40306303000		(6)		
	5	Q3	Circuit breaker		TECO		BM-63C/3010S		10A		1	YE40301003000		(2)		
	6	Q4	Circuit breaker		TECO		BM-63C/2006S 2P		6A		1	YE40200600000				
	7	Q5	Circuit breaker		TECO		BM-63C/1010S 1P		10A		1	YE40101000100				
B	8	K1,K2	Contactor		SIEMENS		3RT5054-1AB36		115A 24VAC 50/60Hz		2	YE00505400900				
	9		Auxiliary contact		SIEMENS		3RH5921-1CA01		1NC		1	YE00592110100		(4)		
	10		Auxiliary contact		SIEMENS		3RH5921-1CA01		1NC		1	YE00592110100				
	11		Auxiliary contact		SIEMENS		3RH5921-1CA10		1NO		1	YE00592110000		(5)		
	12		Auxiliary contact		SIEMENS		3RH5921-1CA10		1NO		1	YE00592110000				
	13	K3	Auxiliary contact		SIEMENS		3RT5046-1AC20		95A 24VAC 50/60Hz		1	YE00504602600				
	14	K4	Contactor		SIEMENS		3RT6025-1AC20		17A 24VAC 50/60Hz		1	YE00602502600				
C	15	K4	Contactor		SIEMENS		3RT6028-1AC20		38A 24VAC 50/60Hz		1	YE00602802600		(6)		
	16		Auxiliary contactor		SIEMENS		3RH6911-1HA11		1NC+1NO		1	YE00691100100				
	17	K5	Contactor		SIEMENS		3RT6016-1AB02		9A 24VAC 50/60Hz		1	YE00601602600		(2)		
	18	K6	Contactor		SIEMENS		3RT5056-6AB36		185A 24VAC 50/60Hz		1	YE00505600300		(4)		
	19		Auxiliary contactor		SIEMENS		3RH5921-1CA01		1NC		1	YE00592110100		(4)		
	20		Auxiliary contactor		SIEMENS		3RH5921-1CA10		1NO		1	YE00592110000		(4)		
	21	K7	Middle relay		Honeywell		GR-2C-AC24V		24VAC		1	YE030224.00300				
D	22	K7	Middle relay		Honeywell		GR-4C-AC24V		24VAC		1	YE030424.00300		(5)		
	23	K8	Safety relay		PILZ		PNOZ×2.8P		24V AC/DC		1	YE04023000000		(4)		
	24	T	Mutual transformer		----		IN=230/200V OUT=24VAC		300VA		1	YE70023005000				
	25	K9 K10 K11 K15	Middle relay		Honeywell		GR-2C-AC24V		24VAC		4	YE030224.00300		(5)		
	机型版本 Ver.E Notes:(1)Materials not in the control box;(2)Optional de-dust motor accessories;(3)Optional full mat. alarm ;(4)Optional safety relay; (5) Optional belt conveyor;(6) Optional large power:															
					制图 黄振杰		版号 J		标题 SG-4390H		图号 SG-4390(H)-CE-230V-J-10		比例		第 10 张	
					设计 黄振杰		核 准		电气元件明细一				标准 CE		共 12 张	
				校对						信易電機機城股份有限公司 Shini Plastics Technologies, Inc.		机器电压		3φ230V		
标记 更改前		更改后		更改人		日期						20220805		机器频率		50Hz
1		2		3		4		5		6		7		8		

1		2		3		4		5		6		7		8	
NO.	Symbol	Name		Manufacturer		Type		Specification		Number	Material number		Remark		
26	K12	Middle relay		Honeywell		GR-2C-AC24V		24VAC		1	YE03022400300		(4)		
27	K13	Timer		YUYUN		TRF-N/3M		24VAC		1	YE86032400000		(5)		
28	K14	Timer		YUYUN		TH3A-NAB 60S		24VAC		1	YE86602400300		(5)		
29	F1	Thermal overload relay		SIEMENS		3RU5146-4MB0		80-100A		1	YE01514680000				
30		S3 independent mount base		SIEMENS		3RU5946-3AA01		S3		1	YE01594600000				
31	F2	Thermal overload relay		SIEMENS		3RU6126-1JB0		7-10A		1	YE01260700000				
32	F2	Thermal overload relay		SIEMENS		3RU6126-4EB0		27-32A		1	YE01612600600		(6)		
33	F3	Thermal overload relay		SIEMENS		3RU1116-1EB0		2.8-4A		1	YE01160280000		(2)		
34	K16	Middle relay		Honeywell		GR-2C-AC24V		24VAC		1	YE03022400300				
35	S1	Emergency stop button		SCHNEIDER		XB2BS542C		400VAC		1	YE11254200000		(1)		
36		Contact block		SCHNEIDER		ZB2BE102C		1NC		1	YE00210203100		(1)(4)		
37	S2	Stop button		SCHNEIDER		XB2BA22C		400VAC		1	YE11222000000		(1)		
38	S3,H1	Start button (with light)		SCHNEIDER		XB2BW33B1C		24VAC		1	YE11233100000		(1)		
39		Contact block		SCHNEIDER		ZB2BE101C		1NO		1	YE00210103100		(1)(4)		
40	S4,S5	Safety switch		SCHMERSRC		AZ15-02ZVRK-1476		24VAC		2	YE16147600100		(1)		
41	S4,S5	Safety switch		SCHMERSRC		AZ16-02ZVRK-1476		24VAC		2	YE16147600000		(1)(4)		
42	H2	3-color alarm lamp		SHINI		red, gre.,yel,+buzzer		24VAC/DC 50/60Hz		1	BL90002401520		(1)		
43	H3	Buzzer		TEND		EA-2		24VAC		1	YE84240200000		(1)(3)		
44	MS	Mat.level motor		SHINI		SR-80		24VAC		1	YE15802400100		(1)(3)		
45	X1	Terminal board		Honeywell		GK35PE		35mm ² PE		1	YE60003503500				
46	X2	Terminal board		Honeywell		GK35		35mm ²		6	YE60003503200				
47				Honeywell		GK16PE		16mm ² PE		1	YE60001603500				
48	X3	Terminal board		Honeywell		SK2.5		2.5mm ²		21	YE60002503200				
49				Honeywell		GK2.5PE		2.5mm ² PE		1	YE60002503400				
50				Honeywell		SK2.5		2.5mm ²		5	YE60002503200		(2)		
机型版本 Ver.E		Notes:(1)Materials not in the control box;(2)Optional de-dust motor accessories;(3)Optional full mat. alarm;(4)Optional safety relay; (5) Optional belt conveyor;(6) Optional large power:													
制图 黄振杰		版号 J		标题 SG-4390H		图号 SG-4390(H)-CE-230V-J-11		比例		第 11 张		D			
设计 黄振杰		核 准		电气元件明细二		标准 CE		共 12 张							
校对		核 准		SHINI 信易电热机械股份有限公司		Shini Plastics Technologies, Inc.		机器电压		3φ230V					
标记 更改前		更改后		更改人		日期 20220805		机器频率		50Hz					
1		2		3		4		5		7		8			

1		2		3		4		5		6		7		8	
NO.	Symbol	Name		Manufacturer		Type		Specification		Number	Material number		Remark		
51				Honeywell		GK2.5PE		2.5mm ² PE		1	YE60002503400		(2)		
52				Honeywell		SK2.5		2.5mm ²		4	YE60002503200		(3)		
53				Honeywell		SK2.5		2.5mm ²		2	YE60002503200		(5)		
54				Honeywell		SK2.5		2.5mm ²		8	YE60002503200		(4)		
55				Honeywell		SK6		6mm ²		3	YE60000603200		(6)		
56				Honeywell		SK6PE		6mm ² PE		1	YE60000603500		(6)		
57		Terminal fittings E/GK series		Honeywell		----		PCS		4	YE60000003900				
58		Terminal board 2.5		Honeywell		SK2.5		PCS		1	YE60002501100				
59	X4	Metal connector		SHINI		PLT-162-RR(plug)		2P		1	YE68016200100		(1)(5)		
60	X10	Metal connector		SHINI		PLT-254-PM		4P		1	YE68025400000		(1)(3)		
61		Metal connector		SHINI		PLT-254-RF		4P		1	YE68025400100		(1)(3)		
62	X11	Heavy duty connector		HARTING		16P+PE(plug+socket)		16P		1	YE68001601300		(1)		
63	PCB	Microcomputer board/PCB		YUYUN		AB-02		24VAC		1	YE80022400100				
64		Plastic shell SI-4T for circuit board		----		----		----		1	YR40000400100				
65	PA	Ammeter		SFIM		DH-670		100/5A		1	YE25671000000		(1)		
66	TA1	Current mutual transformer		RATIO		RQT-10		100/5A		1	YE04100500000				
67	TA2	Current mutual inductance		YUYUN		----		5-100A		1	----		with circuit board		
68	M1	Granulating motor		----		----		400V 50Hz 30kW		1	----		(1)		
69	M2	Conveying blower		----		----		400V 50Hz 2.2kW		1	----		(1)		
70	M2	Conveying blower		----		----		400V 50Hz 7.5kW		1	----		(1)(6)		
	M3	Dedusting blower		----		----		400V 50Hz 0.75kW		1	----		(1)(2)		
机型版本 Ver.E		Notes:(1)Materials not in the control box;(2)Optional de-dust motor accessories;(3)Optional full mat. alarm ;(4)Optional safety relay; (5) Optional belt conveyor;(6) Optional large power:													
D					制图	黄振杰	版号	J	标题	SG-4390H	图号	SG-4390(H)-CE-230V-J-12	比例	第 12 张	
					设计	黄振杰	核		电气元件明细三			标准	CE	共 12 张	
					校对		准			信易電熱機械股份有限公司	机器电压	3φ230V			
	标记	更改前	更改后	更改人	日期	审核	日期	20220805		Shini Plastics Technologies, Inc.	机器频率	50Hz			
	1		2		3		4		5		6		7		8



SYMBOL	a	b	c	d	e	f
MODE						
SG-4390B	137	70	160	57-75	70	25
SG-4390BH	164	95	200	80-100	83	35

SYMBOL	g	h	i	j
MODE(option)				
Conveying blower	20	7-10	8.1	1.5
Large power conveying blower	63	27-32	28	6

机型版本 Ver.D

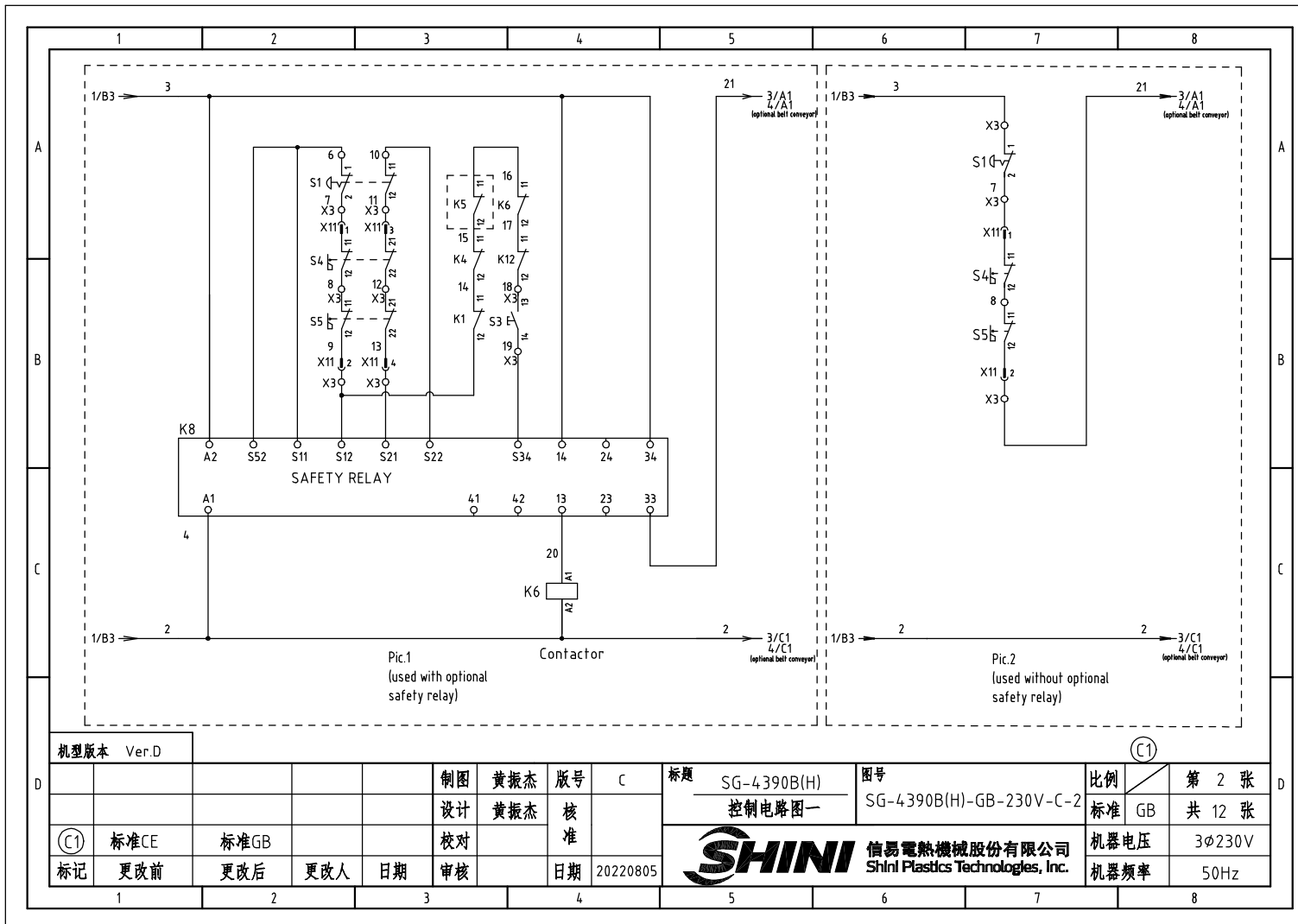
制图	黄振杰	版号	C
设计	黄振杰	核准	
校对		日期	20220805
标记	更改前	更改后	更改人
		日期	

标题 SG-4390B(H)
主电路图

图号 SG-4390B(H)-GB-230V-C-1

比例 第 1 张
标准 GB 共 12 张
机器电压 3φ230V
机器频率 50Hz





机型版本 Ver.D

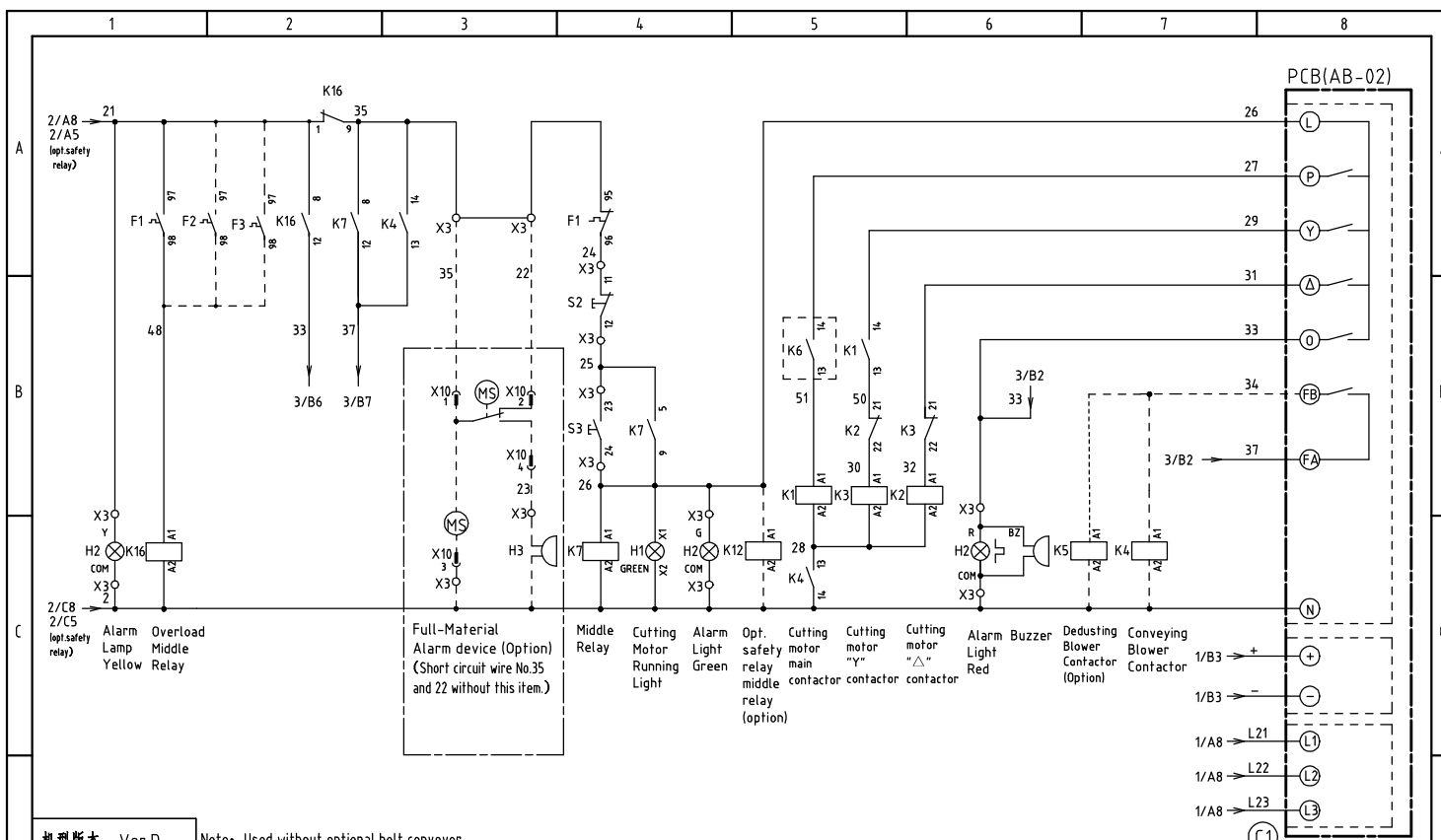
D					制图	黄振杰	版号	C
					设计	黄振杰	核	
					校对		准	
(C1)	标准CE	标准GB			审核		日期	20220805
标记	更改前	更改后	更改人	日期				

标题 SG-4390B(H) 控制电路图一
图号 SG-4390B(H)-GB-230V-C-2

SHINI 信易电热机械股份有限公司
Shini Plastics Technologies, Inc.

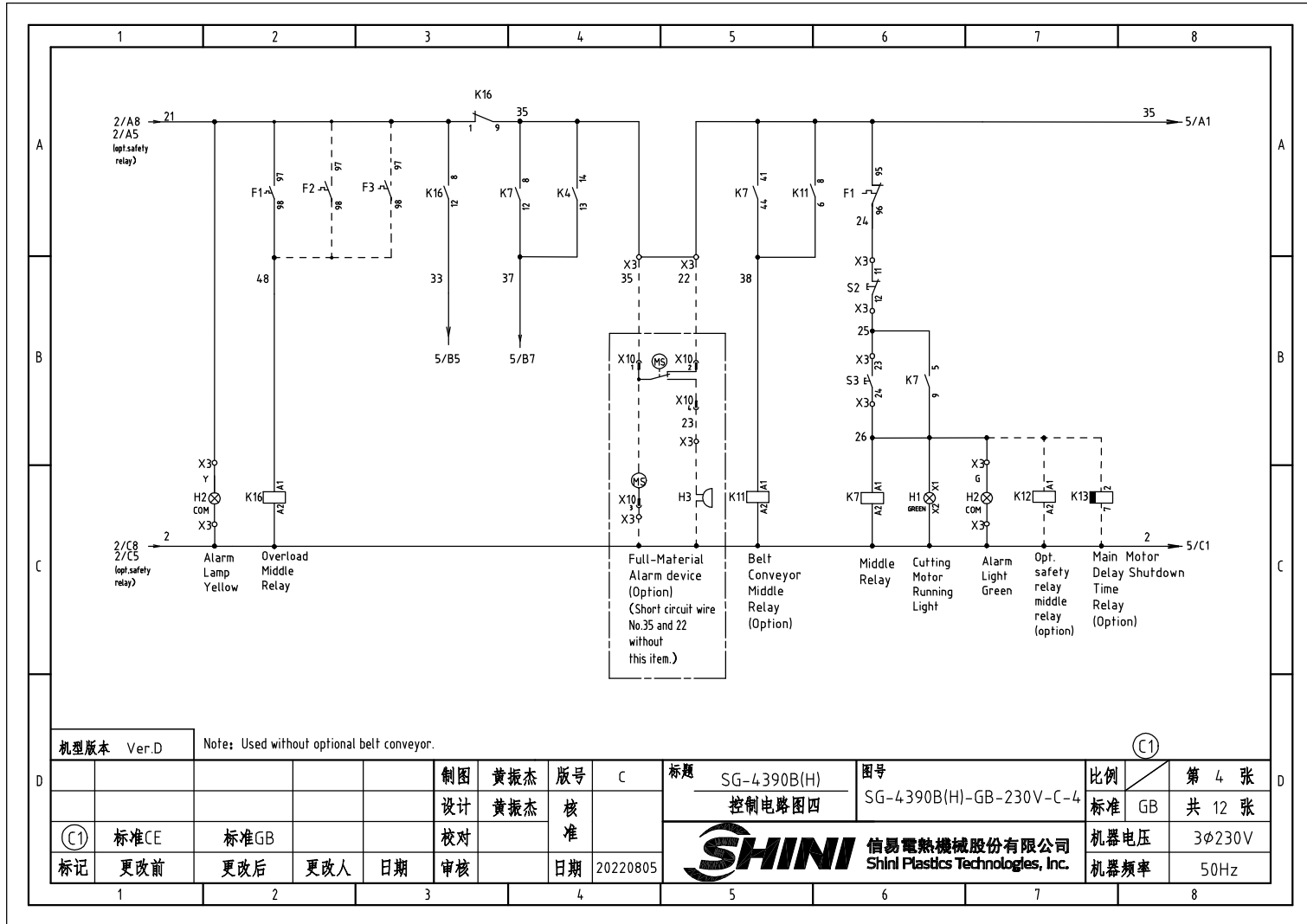
比例	第 2 张
标准	GB 共 12 张
机器电压	3φ230V
机器频率	50Hz

(C1)



机型版本 Ver.D Note: Used without optional belt conveyor.

制图 黄振杰		版本号 C		标题 SG-4390B(H) 控制电路图二		图号 SG-4390B(H)-GB-230V-C-3		比例 第 3 张	
设计 黄振杰		核准		标准 GB		机器电压 3φ230V		共 12 张	
校对		日期 20220805		SHINI 信易電熱機械股份有限公司 Shini Plastics Technologies, Inc.		机器频率 50Hz			
标记 更改前	更改后	更改人	日期	审核	日期				



机型版本 Ver.D

Note: Used without optional belt conveyor.

制图	黄振杰	版号	C
设计	黄振杰	核准	
校对		核准	
标记	更改前	更改后	更改人
	日期	日期	日期

标题 SG-4390B(H)
控制电路图四

图号 SG-4390B(H)-GB-230V-C-4

SHINI 信易電熱機械股份有限公司
Shini Plastics Technologies, Inc.

比例	第 4 张
标准	GB 共 12 张
机器电压	3φ230V
机器频率	50Hz

1

2

3

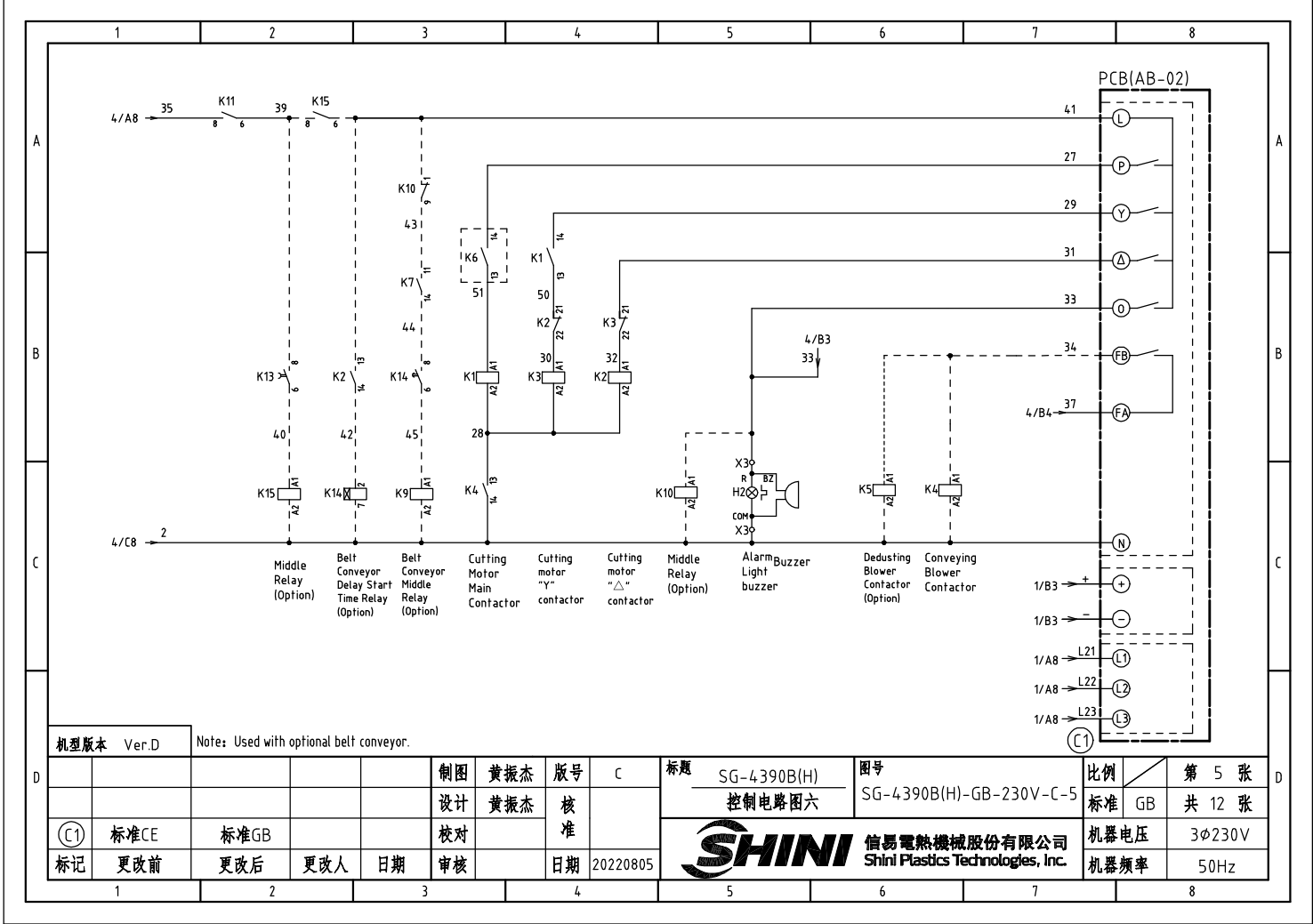
4

5

6

7

8

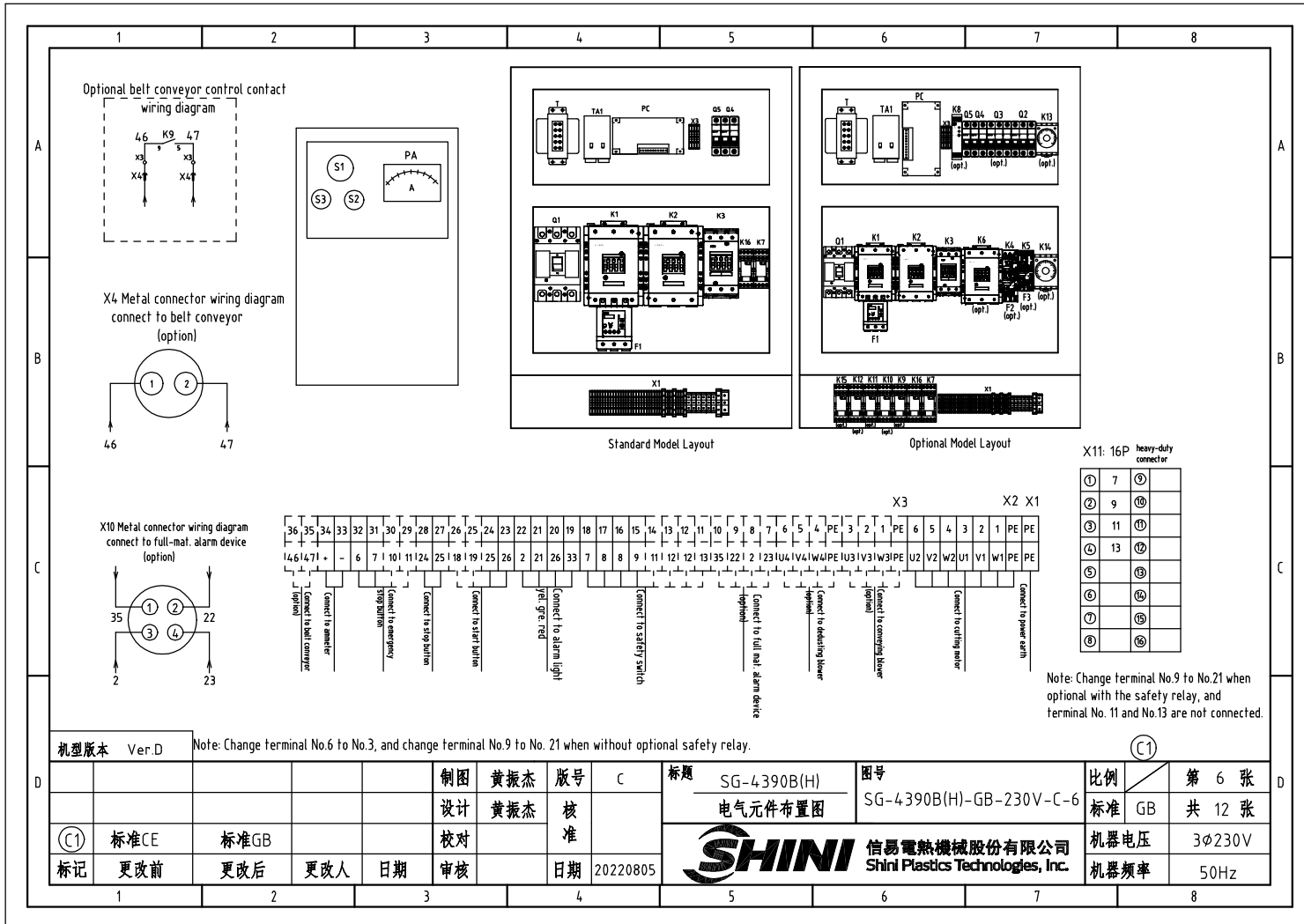


机型版本 Ver.D Note: Used with optional belt conveyor.

制图	黄振杰	版号	C
设计	黄振杰	核准	
校对		日期	20220805
审核		日期	

标题	SG-4390B(H) 控制电路图六	图号	SG-4390B(H)-GB-230V-C-5	比例	第 5 张
标准	GB	共	12 张	机器电压	3φ230V
标记	更改前	更改后	更改人	日期	机器频率
1	2	3	4	5	8





机型版本 Ver.D

Note: Change terminal No.6 to No.3, and change terminal No.9 to No. 21 when without optional safety relay.

				制图	黄振杰	版号	C
				设计	黄振杰	核准	
①	标准CE	标准GB		校对			
标记	更改前	更改后	更改人	日期	审核	日期	20220805

标题	SG-4390B(H) 电气元件布置图
图号	SG-4390B(H)-GB-230V-C-6
SHINI 信易电热机械股份有限公司 Shini Plastics Technologies, Inc.	

比例	第 6 张
标准	共 12 张
机器电压	3φ230V
机器频率	50Hz


1		2		3		4		5		6		7		8		
NO.	Symbol	Name	Manufacturer	Type	Specification	Number	Material number	Remark								
1	Q1	Breaker interlock	TECO	TAX-250L3160/3P	160A	1	YE40250300400									
2		Circuit breaker ext. handler	TECO	FB2R-CS1-C-D1x(TAX-250)	----	1	YE90211200300									
A	3	Q2	Circuit breaker	TECO	BM-63C/3020S	20A	1	YE40302003000	(7)							
	4	Q2	Circuit breaker	TECO	BM-63C/3P	63A	1	YE40306303000	(6)							
	5	Q3	Circuit breaker	TECO	BM-63C/3P	6A	1	YE40300603000	(2)							
	6	Q4	Circuit breaker	TECO	BM-63C/2006S 2P	6A	1	YE40200600000								
	7	Q5	Circuit breaker	TECO	BM-63C/1010S 1P	10A	1	YE40101000100								
	8	K1,K2	Contact	SIEMENS	3RT5046-1AC20	95A 24VAC 50/60Hz	2	YE00504602600								
	9		Auxiliary contact	SIEMENS	3RH5921-1CA10	1NO	1	YE00592110000								
B	10	K3	Contact	SIEMENS	3RT5045-1AC20	80A 24VAC 50/60Hz	1	YE00504502600								
	11		Auxiliary contact	SIEMENS	3RH5921-1CA01	1NC	2	YE00592110100								
	12		Auxiliary contact	SIEMENS	3RH5921-1CA10	1NO	1	YE00592110000	(5)							
	13		Auxiliary contact	SIEMENS	3RH5921-1CA01	1NC	1	YE00592110100	(4)							
	14	K4	Contact	SIEMENS	3RT6017-1AB01	12A 24VAC 50/60Hz	1	YE00601702500	(7)							
	15	K4	Contact	SIEMENS	3RT6027-1AC20	32A 24VAC 50/60Hz	1	YE00602702600	(6)							
	16		Auxiliary contact	SIEMENS	3RH6911-1HA11	1NC+1NO	1	YE00691100100								
C	17	K5	Contact	SIEMENS	3RT6016-1AB02	9A 24VAC 50/60Hz	1	YE00601602600	(2)							
	18	K6	Contact	SIEMENS	3RT5055-6AB36	150A 24VAC 50/60Hz	1	YE00505500600	(4)							
	19		Auxiliary contact	SIEMENS	3RH5921-1CA01	1NC	1	YE00592110100	(4)							
	20		Auxiliary contact	SIEMENS	3RH5921-1CA10	1NO	1	YE00592110000	(4)							
	21	K7	Middle relay	Honeywell	GR-2C-AC24V	24VAC	1	YE03022400300								
	22	K7	Middle relay	Honeywell	GR-4C-AC24V	24VAC	1	YE03042400300	(5)							
	23	K8	Safety relay	PILZ	PNOZ×2.8P	24V AC/DC	1	YE04023000000	(4)							
	24	K9 K10 K11 K15	Middle relay	Honeywell	GR-2C-AC24V	24VAC	4	YE03022400300	(5)							
	25	K12	Middle relay	Honeywell	GR-2C-AC24V	24VAC	1	YE03022400300	(4)							
机型版本 Ver.D		Notes: (1)Materials not in the control box; (2)Optional de-dust motor accessories; (3)Optional full mat. alarm; (4)Optional safety relay; (5) Optional belt conveyor; (6) Optional conveying blower; (7)Optional large blower power; (C1)														
D			制图 黄振杰		版号 C		标题 SG-4390B		图号 SG-4390B(H)-GB-230V-C-7		比例		第 7 张			
			设计 黄振杰		核 准		电气元件明细一		标准 GB		共 12 张					
	(C1) 标准CE		标准GB		校 对		 信易塑料机械股份有限公司 Shini Plastics Technologies, Inc.		机器电压		3φ230V					
	标记 更改前		更改后		审 核				日期 20220805		机器频率		50Hz			
1		2		3		4		5		6		7		8		

1		2		3		4		5		6		7		8	
NO.	Symbol	Name		Manufacturer		Type		Specification		Number	Material number		Remark		
A	26	K13	Timer		YUYUN		TRF-N/3M		24VAC		1	YE86032400000		(5)	
	27	K14	Timer		YUYUN		TH3A-NAB 60S		24VAC		1	YE86602400300		(5)	
	28	F1	Thermal overload relay		SIEMENS		3RU5146-4KB0		57-75A		1	YE01514650000			
	29	F2	Thermal overload relay		SIEMENS		3RU6116-1JB0		7-10A		1	YE01167100000		(7)	
	30	F2	Thermal overload relay		SIEMENS		3RU6126-4EB0		27-32A		1	YE01612600600		(6)	
	31	F3	Thermal overload relay		SIEMENS		3RU1116-1EB0		2.8-4A		1	YE01160280000		(2)	
B	32	K16	Middle relay		Honeywell		GR-2C-AC24V		24VAC		1	YE03022400300			
	33	S1	Emergency stop button		SCHNEIDER		XB2BS542C		400VAC		1	YE11254200000		(1)	
	34		Contact block		SCHNEIDER		ZB2BE102C		1NC		1	YE00210203100		(1)(4)	
	35	S2	Stop button		SCHNEIDER		XB2BA22C		400VAC		1	YE11222000000		(1)	
	36	S3,H1	Start button (with light)		SCHNEIDER		XB2BW33B1C		24VAC		1	YE11233100000		(1)	
	37		Contact block		SCHNEIDER		ZB2BE101C		1NO		1	YE00210103100		(1)(4)	
C	38	S4,S5	Safety switch		SCHMERSRC		AZ16-02ZVRK-1476		230VAC		2	YE16147600000		(1)(4)	
	39	S4,S5	Safety switch		SCHMERSRC		AZ15-02ZVRK-1476		230VAC		2	YE16147600100		(1)	
	40	H2	3-color alarm lamp		SHINI		red, gre.,yel,+buzzer		24VAC/DC 50/60Hz		1	BL90002401520		(1)	
	41	H3	Buzzer		TEND		EA-2		24VAC		1	YE84240200000		(1)(3)	
	42	MS	Mat. level motor		SHINI		SR-80		24VAC		1	YE15802400100		(1)(3)	
	43	T	Mutual transformer		----		IN=230/200V OUT=24VAC		300VA		1	YE70023005000			
D	44	TA1	Current mutual transformer		RATIO		RQT-35		100/5A		1	YE04100500000			
	45	PA	Ammeter		SFIM		DH-670		100/5A		1	YE25671000000		(1)	
	46	PCB	Micro computer board/PCB		YUYUN		AB-02		24VAC		1	YE80022400100			
	47		Plastic shell SI-4T for circuit board		----		----		----		1	YR40000400100			
	48	TA2	Current mutual inductance		YUYUN		----		5-100A		1	----		with circuit board	
	49	X1	Terminal board		Honeywell		GK35PE		35mm ² PE		1	YE60003503500			
50	X2	Terminal board		Honeywell		GK35		35mm ²		6	YE60003503200				
机型版本		Ver.D		Notes:(1)Materials not in the control box;(2)Optional de-dust motor accessories;(3)Optional full mat. alarm;(4)Optional safety relay;(5) Optional belt conveyor; (6)Optional large blower power; (7) Optional conveying blower (C1)											
				制图 黄振杰		版号 C		标题 SG-4390B		图号 SG-4390B(H)-GB-230V-C-8		比例		第 8 张	
				设计 黄振杰		核 准		电气元件明细二		标准 GB		共 12 张			
(C1)		标准CE 标准GB		校对		日期		SHINI 信昂電熱機械股份有限公司 Shini Plastics Technologies, Inc.		机器电压		3φ230V			
标记		更改前 更改后		更改人 日期		审核 日期		20220805		机器频率		50Hz			
1		2		3		4		5		6		7		8	

1		2		3		4		5		6		7		8		
NO.	Symbol	Name		Manufacturer	Type		Specification		Number	Material number		Remark				
51		Terminal board		Honeywell	GK16PE		16mm ² PE		1	YE60001603500						
52	X3	Terminal board		Honeywell	SK2.5		2.5mm ²		21	YE60002503200						
53				Honeywell	GK2.5PE		2.5mm ² PE		1	YE60002503400						
54				Honeywell	SK2.5		2.5mm ²		5	YE60002503200		(2)				
55				Honeywell	GK2.5PE		2.5mm ² PE		1	YE60002503400		(2)				
56				Honeywell	SK2.5		2.5mm ²		4	YE60002503200		(3)				
57				Honeywell	SK2.5		2.5mm ²		2	YE60002503200		(5)				
58				Honeywell	SK2.5		2.5mm ²		8	YE60002503200		(4)				
59				Honeywell	SK6		6mm ²		3	YE60000603200		(6)				
60				Honeywell	SK6PE		6mm ² PE		1	YE60000603500		(6)				
61		Terminal fittings E/GK series		Honeywell			PCS		4	YE60000003900						
62	X4	Metal connector		SHINI	PLT-162-RR(plug)		2P		1	YE68016200100		(1)(5)				
63	X10	Metal connector		SHINI	PLT-254-PM		4P		1	YE68025400000		(1)(3)				
64		Metal connector		----	PLT-254-RF		4P		1	YE68025400100		(1)(3)				
65	X11	Heavy duty connector		HARTING	16P+PE(plug+socket)		16P		1	YE68001601300		(1)				
66	M1	Cutting motor		----	----		230V 50Hz 37kW		1	----		(1)				
67	M2	Conveying blower		----	----		230V 50Hz 2.2kW		1	----		(1)				
68	M2	Conveying blower		----	----		230V 50Hz 7.5kW		1	----		(1)(6)				
69	M3	De-dust blower		----	----		230V 50Hz 0.75kW		1	----		(1)(2)				
机型版本 Ver.D Notes:(1)Materials not in the control box,(2)Optional de-dust motor accessories,(3)Optional full mat. alarm ,(4)Optional safety relay, (5) Optional belt conveyor, (6)Optional large blower power, (7) Optional conveying blower (C1)																
				制图	黄振杰	版本号	C	标题		SG-4390B	图号	SG-4390B(H)-GB-230V-C-9	比例	第 9 张		
				设计	黄振杰	核		电气元件明细三				标准	GB	共 12 张		
				校对		准		SHINI		信易電機機械股份有限公司 Shini Plastics Technologies, Inc.		机器电压	3φ230V			
				审核		日期	20220805					机器频率	50Hz			

1		2		3		4		5		6		7		8	
NO.	Symbol	Name		Manufacturer		Type		Specification		Number	Material number		Remark		
1	Q1	Breaker interlock		TECO		TAX-250L3200 / 3P		200A		1	YE40250300500				
2		Circuit breaker ext. handler		TECO		FB2R-CS1-C-D1x(TAX-250)		----		1	YE90211200300				
3	Q2	Circuit breaker		TECO		BM-63C/3020S		20A		1	YE40302003000		(7)		
4	Q2	Circuit breaker		TECO		BM-63C/3P		63A		1	YE40306303000		(6)		
5	Q3	Circuit breaker		TECO		BM-63C/3010S		10A		1	YE40301003000		(2)		
6	Q4	Circuit breaker		TECO		BM-63C/2006S 2P		6A		1	YE40200600000				
7	Q5	Circuit breaker		TECO		BM-63C/1010S 1P		10A		1	YE40101000100				
8	K1,K2	Contactor		SIEMENS		3RT5054-1AB36		115A 24VAC 50/60Hz		2	YE00505400900				
9		Auxiliary contact		SIEMENS		3RH5921-1CA01		1NC		1	YE00592110100		(4)		
10		Auxiliary contact		SIEMENS		3RH5921-1CA01		1NC		1	YE00592110100				
11		Auxiliary contact		SIEMENS		3RH5921-1CA10		1NO		1	YE00592110000		(5)		
12		Auxiliary contact		SIEMENS		3RH5921-1CA10		1NO		1	YE00592110000				
13	K3	Contactor		SIEMENS		3RT5046-1AC20		95A 24VAC 50/60Hz		1	YE00504602600				
14	K4	Contactor		SIEMENS		3RT6017-1AB01		12A 24VAC 50/60Hz		1	YE00601702500		(7)		
15	K4	Contactor		SIEMENS		3RT6028-1AC20		38A 24VAC 50/60Hz		1	YE00602802600		(6)		
16		Auxiliary contact		SIEMENS		3RH6911-1HA11		1NC+1NO		1	YE00691100100				
17	K5	Contactor		SIEMENS		3RT6016-1AB02		9A 24VAC 50/60Hz		1	YE00601602600		(2)		
18	K6	Contactor		SIEMENS		3RT5056-6AB36		185A 24VAC 50/60Hz		1	YE00505600300		(4)		
19		Auxiliary contact		SIEMENS		3RH5921-1CA01		1NC		1	YE00592110100		(4)		
20		Auxiliary contact		SIEMENS		3RH5921-1CA10		1NO		1	YE00592110000		(4)		
21	K7	Middle relay		Honeywell		GR-2C-AC24V		24VAC		1	YE03022400300				
22	K7	Middle relay		Honeywell		GR-4C-AC24V		24VAC		1	YE03042400300		(5)		
23	K8	Safety relay		PILZ		PNOZ×2.8P		24V AC/DC		1	YE04023000000		(4)		
24	T	Mutual transformer		----		IN=230/200V OUT=24VAC		300VA		1	YE70023005000				
25	K9 K10 K11 K15	Middle relay		Honeywell		GR-2C-AC24V		24VAC		4	YE03022400300		(5)		
机型版本 Ver.D Notes:(1)Materials not in the control box;(2)Optional de-dust motor accessories;(3)Optional full mat. alarm;(4)Optional safety relay;(5) Optional belt conveyor; (6)Optional large blower power; (7) Optional conveying blower.(C1)															
				制图 黄振杰		版号 C		标题 SG-4390BH		图号 SG-4390B(H)-GB-230V-C-10		比例 第 10 张		D	
				设计 黄振杰		核 准		电气元件明细一		标准 GB		共 12 张			
(C1) 标准CE		标准GB		校对		日期 20220805		 信易電熱機械股份有限公司 Shini Plastics Technologies, Inc.		机器电压		3ø230V			
标记 更改前		更改后		更改人		日期				机器频率		50Hz			
1		2		3		4		5		6		7		8	

1		2		3		4		5		6		7		8	
NO.	Symbol	Name		Manufacturer		Type		Specification		Number	Material number		Remark		
26	K12	Middle relay		Honeywell		GR-2C-AC24V		24VAC		1	YE03022400300		(4)		
27	K13	Timer		YUYUN		TRF-N/3M		24VAC		1	YE86032400000		(5)		
28	K14	Timer		YUYUN		TH3A-NAB 60S		24VAC		1	YE86602400300		(5)		
29	F1	Thermal overload relay		SIEMENS		3RU5146-4MB0		80-100A		1	YE01514680000				
30		S3 independent mount base		SIEMENS		3RU5946-3AA01		S3		1	YE01594600000				
31	F2	Thermal overload relay		SIEMENS		3RU6116-1JB0		7-10A		1	YE01167100000		(7)		
32	F2	Thermal overload relay		SIEMENS		3RU6126-4EB0		27-32A		1	YE01612600600		(6)		
33	F3	Thermal overload relay		SIEMENS		3RU1116-1EB0		2.8-4A		1	YE01160280000		(2)		
34	K16	Middle relay		Honeywell		GR-2C-AC24V		24VAC		1	YE03022400300				
35	S1	Emergency stop button		SCHNEIDER		XB2BS542C		400VAC		1	YE11254200000		(1)		
36		Contact block		SCHNEIDER		ZB2BE102C		1NC		1	YE00210203100		(1)(4)		
37	S2	Stop button		SCHNEIDER		XB2BA22C		400VAC		1	YE11222000000		(1)		
38	S3,H1	Start button (with light)		SCHNEIDER		XB2BW33B1C		24VAC		1	YE11233100000		(1)		
39		Contact block		SCHNEIDER		ZB2BE101C		1NO		1	YE00210103100		(1)(4)		
40	S4,S5	Safety switch		SCHMERSRC		AZ15-02ZVRK-1476		24VAC		2	YE16147600100		(1)		
41	S4,S5	Safety switch		SCHMERSRC		AZ16-02ZVRK-1476		24VAC		2	YE16147600000		(1)(4)		
42	H2	3-color alarm lamp		SHINI		red, gre.,yel,+buzzer		24VAC/DC 50/60Hz		1	BL90002401520		(1)		
43	H3	Buzzer		TEND		EA-2		24VAC		1	YE84240200000		(1)(3)		
44	MS	Mat.level motor		SHINI		SR-80		24VAC		1	YE15802400100		(1)(3)		
45	X1	Terminal board		Honeywell		GK35PE		35mm ² PE		1	YE60003503500				
46	X2	Terminal board		Honeywell		GK35		35mm ²		6	YE60003503200				
47				Honeywell		GK16PE		16mm ² PE		1	YE60001603500				
48	X3	Terminal board		Honeywell		SK2.5		2.5mm ²		21	YE60002503200				
49				Honeywell		GK2.5PE		2.5mm ² PE		1	YE60002503400				
50				Honeywell		SK2.5		2.5mm ²		5	YE60002503200		(2)		
机型版本		Ver.D		Notes:(1)Materials not in the control box;(2)Optional de-dust motor accessories;(3)Optional full mat. alarm ;(4)Optional safety relay; (5) Optional belt conveyor; (6)Optional large blower power; (7) Optional conveying blower (C1)											
D					制图	黄振杰	版本号	C	标题	SG-4390BH	图号	SG-4390B(H)-GB-230V-C-11	比例	第 11 张	
					设计	黄振杰	核		电气元件明细二			标准	GB	共 12 张	
	(C1)	标准CE	标准GB		校对		准		 信易電熱機械股份有限公司 Shini Plastics Technologies, Inc.		机器电压	3φ230V			
标记	更改前	更改后	更改人	日期	审核	日期	20220805	机器频率			50Hz				
1		2		3		4		5		6		7		8	

1		2		3		4		5		6		7		8	
NO.	Symbol	Name		Manufacturer	Type	Specification		Number	Material number		Remark				
51				Honeywell	GK2.5PE	2.5mm ² PE		1	YE60002503400		(2)		A		
52				Honeywell	SK2.5	2.5mm ²		4	YE60002503200		(3)				
53				Honeywell	SK2.5	2.5mm ²		2	YE60002503200		(5)				
54				Honeywell	SK2.5	2.5mm ²		8	YE60002503200		(4)				
55				Honeywell	SK6	6mm ²		3	YE60000603200		(6)				
56				Honeywell	SK6PE	6mm ² PE		1	YE60000603500		(6)				
57		Terminal fittings E/GK series		Honeywell	----	PCS		4	YE60000003900						
58	X4	Metal connector		SHINI	PLT-162-RR(plug)	2P		1	YE68016200100		(1)(5)				
59	X10	Metal connector		SHINI	PLT-254-PM	4P		1	YE68025400000		(1)(3)				
60		Metal connector		SHINI	PLT-254-RF	4P		1	YE68025400100		(1)(3)				
61	X11	Heavy duty connector		HARTING	16P+PE(plug+socket)	16P		1	YE68001601300		(1)		B		
62	PCB	Microcomputer board/PCB		YUYUN	AB-02	24VAC		1	YE80022400100						
63		Plastic shell SI-4T for circuit board		----	----	----		1	YR40000400100						
64	PA	Ammeter		SFIM	DH-670	100/5A		1	YE25671000000		(1)				
65	TA1	Current mutual transformer		RATIO	RQT-10	100/5A		1	YE04100500000						
66	TA2	Current mutual transformer		YUYUN	----	5-100A		1	----		with circuit board				
67	M1	Granulating motor		----	----	230V 50Hz 30kW		1	----		(1)				
68	M2	Conveying blower		----	----	230V 50Hz 2.2kW		1	----		(1)				
69	M2	Conveying blower		----	----	230V 50Hz 7.5kW		1	----		(1)(6)		C		
70	M3	Dedusting blower		----	----	230V 50Hz 0.75kW		1	----		(1)(2)				
机型版本 Ver.D Notes:(1)Materials not in the control box;(2)Optional de-dust motor accessories;(3)Optional full mat. alarm ;(4)Optional safety relay; (5) Optional belt conveyor; (6)Optional large blower power; (7) Optional conveying blower (C1)															
D				制图 黄振杰		版号 C		标题 SG-4390BH		图号 SG-4390B(H)-GB-230V-C-12		比例 第 12 张		D	
				设计 黄振杰		核 准		电气元件明细三				标准 GB 共 12 张			
(C1)		标准CE		标准GB		校对		 信易電熱機械股份有限公司 Shini Plastics Technologies, Inc.		机器电压		3φ230V			
标记		更改前		更改后		更改人				日期		机器频率		50Hz	
1		2		3		4		5		6		7		8	