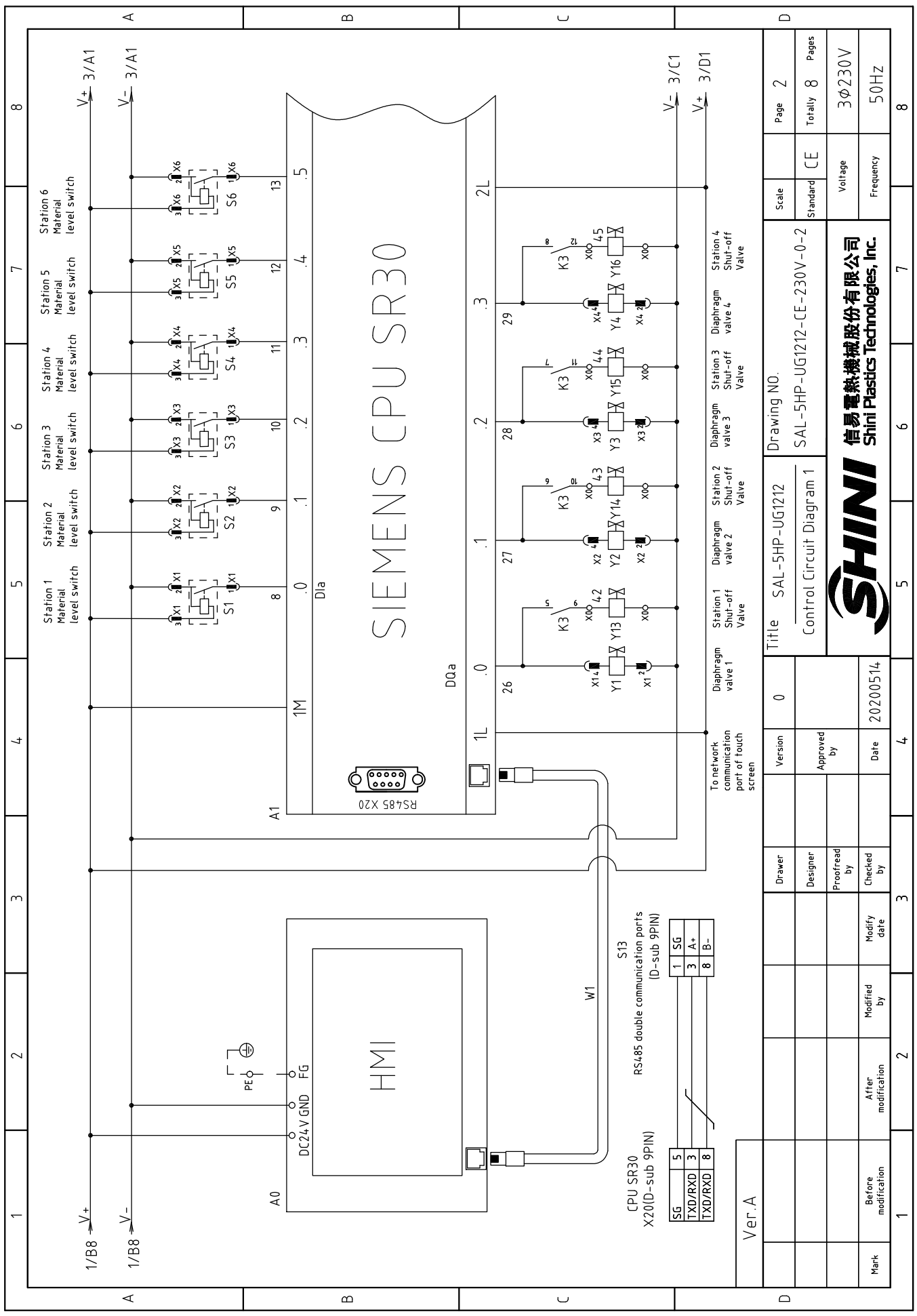


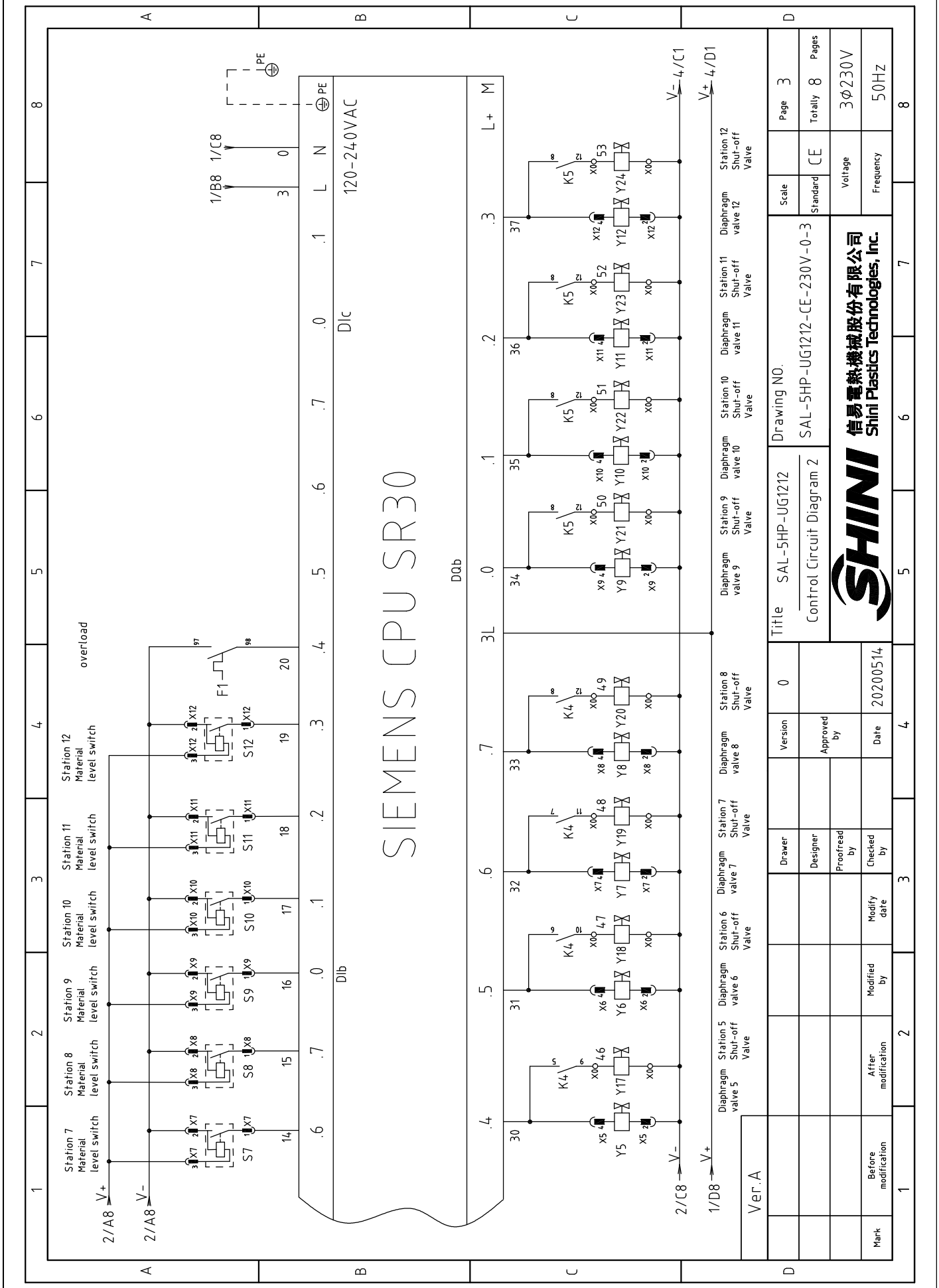
Ver.A									
Mark	Before modification	After modification	Modified by	Modify date	Checked by	Proofread by	Designer	Drawer	Version
									0
				20200514					

Title		SAL-5HP-UG1212		Drawing NO.		SAL-5HP-UG1212-CE-230V-0-1		Scale		Page 1	
Main Circuit Diagram								Standard		Totally 8 Pages	
								Voltage		3φ230V	
								Frequency		50Hz	

信易電熱機械股份有限公司
Shini Plastics Technologies, Inc.



1	2	3	4	5	6	7	8
Ver.A		0	0	0	Title		Scale
Mark		Before modification	Modified by	Date	Drawing NO.		Page 2
After modification		Checked by	20200514	SAL-5HP-UG1212		Standard	Totally 8 Pages
Modified date		Approved by		SAL-5HP-UG1212-CE-230V-0-2		CE	Voltage
Modify date		Designer		Control Circuit Diagram 1			Frequency
Modify date		Proofread by		信易電熱機械股份有限公司			3φ230V
Modify date		Checked by		SHINI			50HZ
Modify date		Checked by		Shini Plastics Technologies, Inc.			8



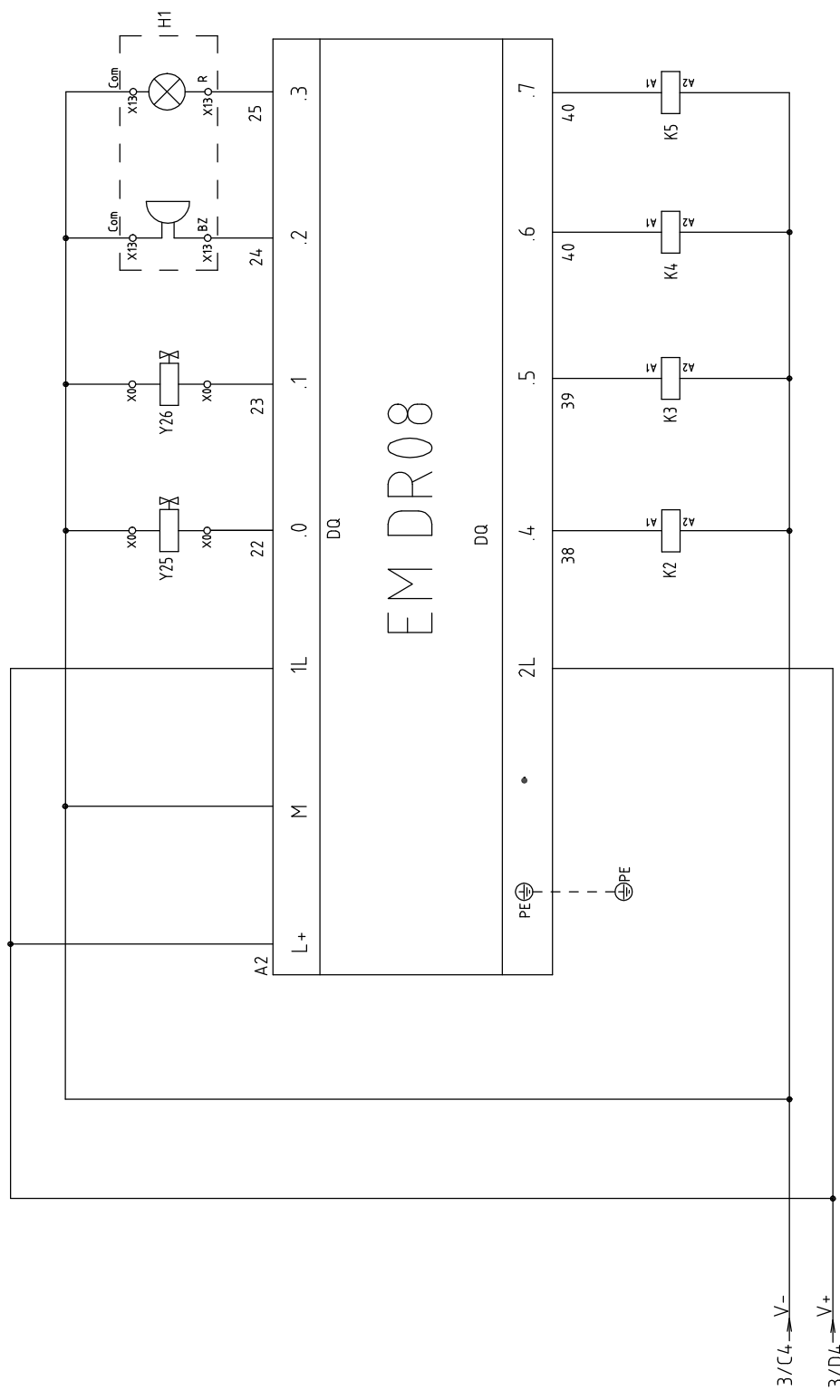
SIEMENS CPU SR30

DQB

Title		Drawing NO.		Page	
SAL-5HP-UG1212		SAL-5HP-UG1212-CE-230V-0-3		3	
Control Circuit Diagram 2		Standard		CE	
Voltage		Frequency		Totally 8 Pages	
3φ230V		50HZ			

Mark	Before modification	After modification	Modified by	Modify date	Checked by	Proofread by	Designer	Drawer	Version
1									0
2									
3									
4				20200514					





Ver.A									
Mark	Before modification	Modified by	Modify date	Checked by	Proofread by	Designer	Drawer	Version	0
			20200514					Approved by	
								Date	4

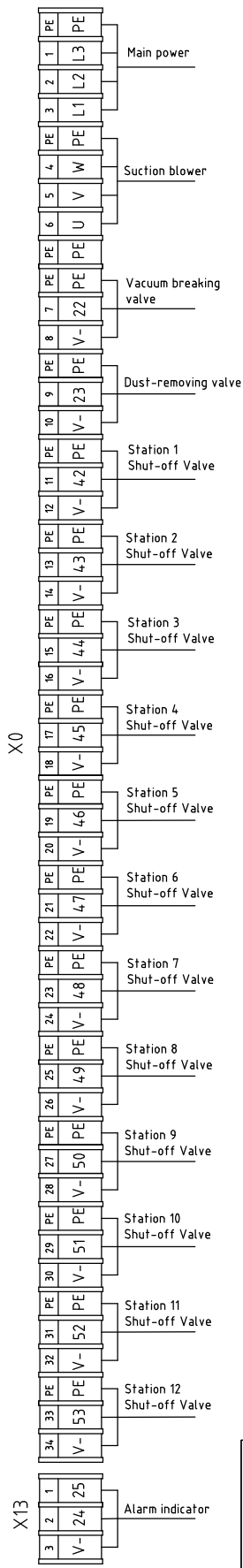
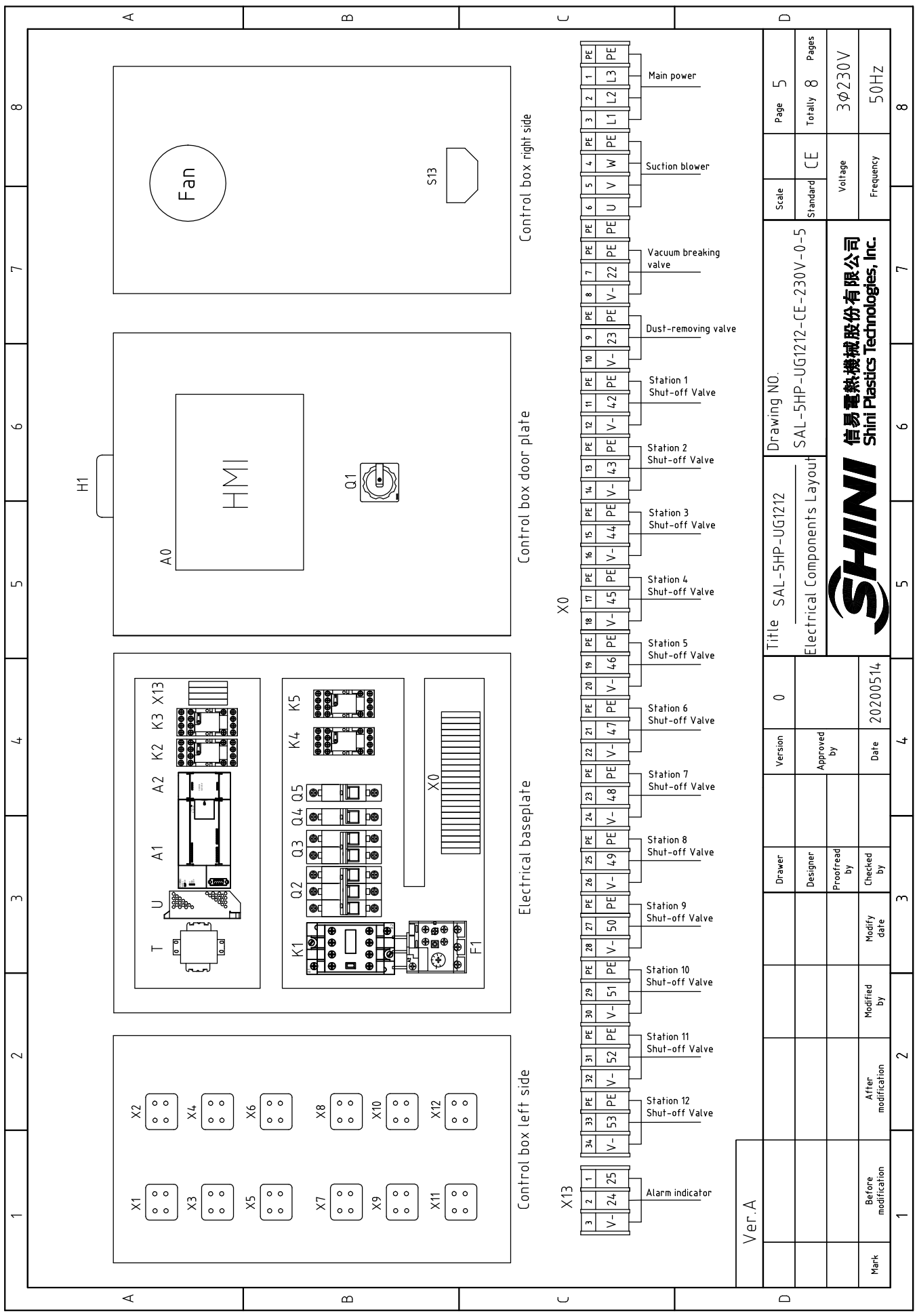
Suction contactor middle relay K2
 1-4 shut-off valve middle relay K3
 5-8 shut-off valve middle relay K4
 9-12 shut-off valve middle relay K5

Control Circuit Diagram 3
 Drawing NO. SAL-5HP-UG1212-CE-230V-0-4

Scale	Standard	Page	Totally
	CE	4	8
Voltage	Frequency	3φ230V 50HZ	

信易電熱機械股份有限公司
 Shini Plastics Technologies, Inc.

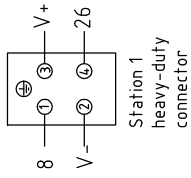
Mark	Before modification	Modified by	Modify date	Checked by	Proofread by	Designer	Drawer	Version	0
			20200514					Approved by	
								Date	4



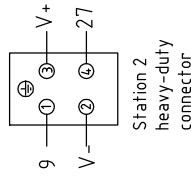
Ver.A	Title		Drawing NO.		Scale	Page	
	SAL-5HP-UG1212		SAL-5HP-UG1212-CE-230V-0-5		Standard	Totally 8	
Electrical Components Layout		SHINI		Voltage		Pages	
20200514		信易電熱機械股份有限公司 Shini Plastics Technologies, Inc.		3φ230V		8	
Mark	Before modification	Modified by	Modified date	Checked by	Proofread by	Designer	
1	2	3	4	5	6	7	
Control box left side		Electrical baseplate		Control box door plate		Control box right side	

1	2	3	4	5	6	7	8
A	B	C	D				
1	2	3	4	5	6	7	8
A	B	C	D				
1	2	3	4	5	6	7	8
A	B	C	D				

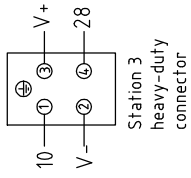
X1



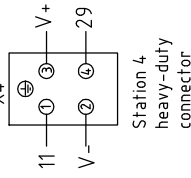
X2



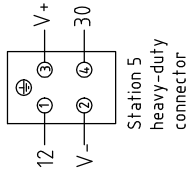
X3



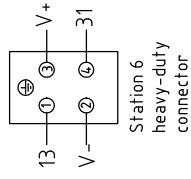
X4



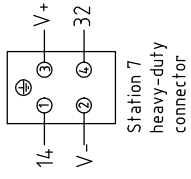
X5



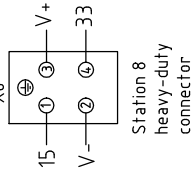
X6



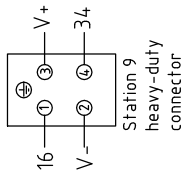
X7



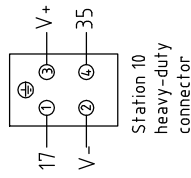
X8



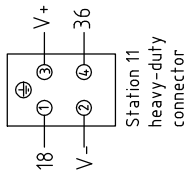
X9



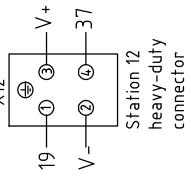
X10



X11



X12



Ver.A	
Mark	Before modification
After modification	Modified by
Proofread by	Modify date
Designer	Checked by
Version	Date
0	20200514
0	4

Title		Drawing NO.		Scale		Page	
SAL-5HP-UG1212		SAL-5HP-UG1212-CE-230V-0-6		Standard		Totally 8	
Heavy-duty connector Wiring Diagram		CE		Voltage		Pages	
				3φ230V		50HZ	
						8	



1	2		3	4	5	6		7	8
NO.	Symbol	Name	Manufacturer	Type	Specification	Number	Material number	Remark	
1	Q1	Main power switch	EATON	T0-2-1/EA/SVB	20A	1	YE10021160000		
2	Q2	Circuit-Breakers	TECO	BM-63C/3032S	32A	1	YE40303203000		
3	Q3	Circuit-Breakers	TECO	BM-63C/2003S	3A 2P	1	YE40200203000		
4	Q4 Q5	Circuit-Breakers	TECO	BM-63C/1003S	3A 1P	2	YE40100203000		
5	K1	Contactors	SIEMENS	3RT6018-1AB01	24VAC	1	YE00601802500		
6	K2	Mid-relay	WEIDMULLER	DRM270724LT	24VDC	1	YE03272400000		
7	K3 K4 K5	Mid-relay	HONEYWELL	GR-4C	24VDC	3	YE03042400500		
8	F1	Overload Relay	SIEMENS	3RU6116-1AB0	11-16A	1	YE01611640000		
9	A1	Programmable logic controller	SIEMENS	SR 30	230VAC 5W	1	YE81003006000		
10	A2	I/O module	SIEMENS	EM DR08	8 out	1	YE80008000600		
11	A0	Human-machine interface	FLXEM	F007R	24VDC	1	YE80072400000		
12	U	DC power	MEAN WELL	NES-100-24	OUT 24V 4.5A	1	YE71102400000		
13	X1-X12	Heavy duty connectors	HARTING	Han 4A-F	4(PIE)	12	YE68000401400		
14	T	Transformer	JIUXIN	IN=230V/200VOUT=24V	80VA	1	YE70023005200		
15	S1	RS-485 Communication interface board	YUYUN	---	DSUB-9PIN connector	1	YE90048501200		
16		Shell RS485(SAL-700G-A-19)0	---	---	PCS	1	YR40048500000		
17	H1	Alarm light	HONGYUN	Red. Yel. Gre + buzzer	24VAC/DC	1	BL90000011520		
18		Super five classes network wire jumper 2M	---	2M	BA	1	YE90000201600		
19	X0	Terminal Board	HONEYWELL	SK2.5	2.5mm ²	34	YE60002503200		
20		Terminal Board	HONEYWELL	GK2.5PE	2.5PE	17	YE60002503400		
21	X13	Terminal Board	HONEYWELL	SK2.5	2.5mm ²	3	YE60002503200		
22	Y1-Y26	Solenoid Vavle	---	---	24VDC	26	---	(1)	
23		Terminal fittings E/GK series (honeywell)	HONEYWELL	---	PCS	6	YE60000003900		
24	Fan	Exhaust fan + plastic air net	LZMY	9225AT	230V	1	YM60922500100		
25	M	Blower	EMORE HORE	EHS-4337	5HP 230V 50HZ	1	---	(1)	

Note: (1) Means not part of control box.

1	2		3	4	5	6		7	8
Mark	Before modification	After modification	Modified by	Modified date	Checked by	Proofread by	Designer	Drawer	Version
									0
									Approved by
									Date
				20200514					
Title					Drawing NO.				
SAL-5HP-UG1212					SAL-5HP-UG1212-CE-230V-0-7				
Electrical Components List					Scale				
					Standard				
					CE				
					Voltage				
					3φ230V				
					Frequency				
					50HZ				
					Totally				
					8				
					Page				
					7				



1	2		3	4	5	6	7	8
NO.	Symbol	Name	Manufacturer	Type	Specification	Number	Material number	Remark
26	S1-S12	Photosensor switch	FOTEK	MT-4MNO-30VDC	10...30VDC	12	---	(1) Photosensor hopper
27		Reed switch	SONON	BN12-30BLA	24VDC	12	---	(1) Vacuum hopper
A								
B								
C								
D								
Note: (1) Means not part of control box.								
Title SAL-5HP-UG1212			Version		Drawing NO.		Page	
Electrical Components List 2			0		SAL-5HP-UG1212-CE-230V-0-8		8	
SHINI			Approved by		CE		Totally 8 Pages	
信易電熱機械股份有限公司 Shini Plastics Technologies, Inc.			Date		Voltage		3φ230V	
Mark			20200514		Frequency		50HZ	
1	2		3	4	5	6	7	8