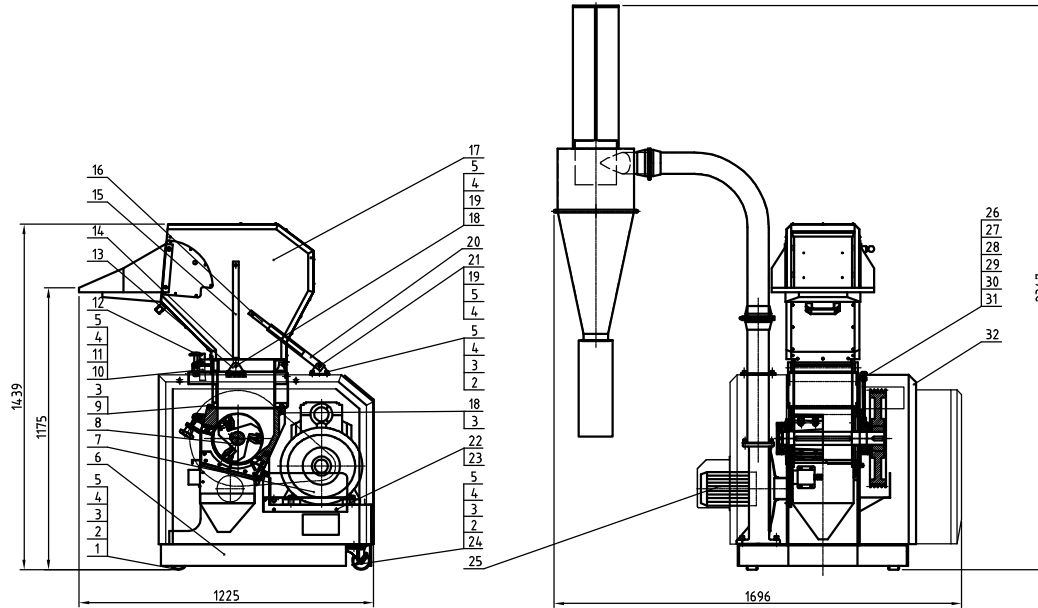


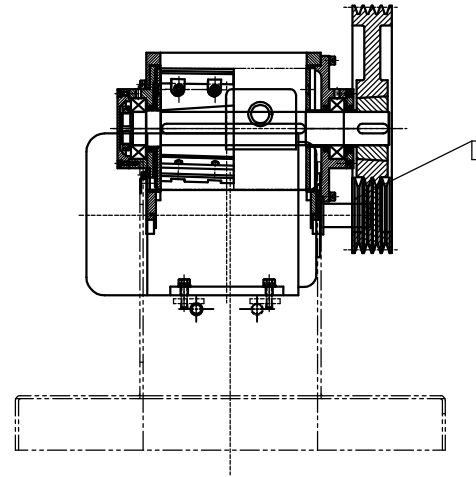
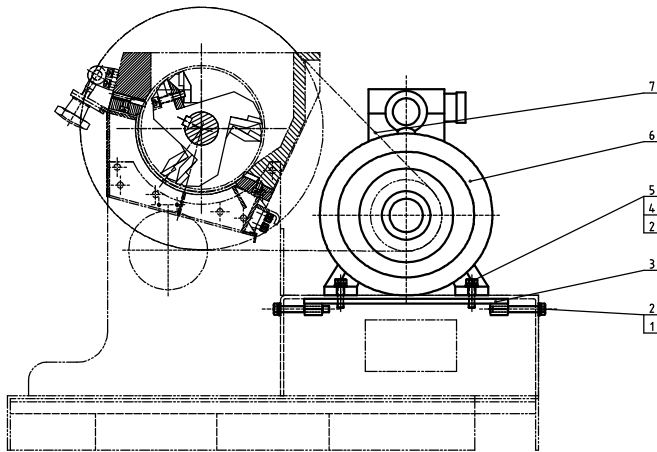
Standard weight(kg)	Noise level (dB(A))	Max. cutting ability (kg/hr)	Cutting Chamber Size (mm)	Rotating Cutter Qty.	Fixed Cutter Qty.	Cutter Material	Main Shaft Speed (r.p.m)	Motor Power (kW, hp/60Hz)	Ver. No.
4.70	90~95	90	230×24.0	3×2	2	SKD11	4.15	5.5/6.3	Ver.F



Note: 1) Maximum cutting ability depends on the screen diameter, material size and material type;
 2) During cutting, the noise level varies depending on different materials and motor configuration;
 3) SKD 11 is JIS standard;
 4) To avoid plastic sticking, all materials to be granulated must be processed at normal temperature;
 5) Power supply: 3ø,400VAC,50Hz

32	-	Shield	Assembly	1	16	BH10300500110	Support pipe 1	Q235A	1	borrow
31	YW04010100000	Oil nozzle M10×1	H62	2	15	BH10300400110	Air spring sleeve	Q235A	1	borrow
30	BH12000301010	3" copper nut	H62	4	14	YW01050000100	Air pressure spring 500N		1	
29	BH10360100010	Oil pipe nut	H62	2	13	-	Air spring support base	SPH4.0	2	borrow
28	BH10361100010	3/8 copper pipe ext. connector	H62	2	12	BH11300200010	Feed box star assembly	Assembly	2	borrow
27	BH12361000010	3/8 copper pipe inner connector	H62	2	11	YW61082000200	Inner hex column head screw M8×1	12.9	1	
26	BH12230300010	Oil filling pipe	TP2	2	10	-	Roller	SPH6.0	1	borrow
25	-	Auto conveying assembly	Assembly	1	9	YW61081600000	Inner hex column head screw M6	12.9	3	
24	YW03000300900	Side movable castor 3"		2	8	-	Cutting chamber assembly	Assembly	1	
23	YW62061000000	Large cross recessed flat head screw M6×1		3	7	-	Main transmission gear	Assembly	1	
22	-	Safety screen plate	screen plate 15	1	6	-	Rack assembly	Welding parts	1	
21	YW61085000000	Inner hex column head screw M8×1	12.9	3	5	YW64000800100	Hex nut M8 anti-loose	5	25	
20	BH10436001810	Support pipe 2	Q235A	1	4	YW66081600000	Flat washer 8	14.0HV	35	
19	YW64080600000	Hex. nut GB/T6170 M8-Longzine		4	3	YW65008000100	Spring washer 8	65Mn	26	
18	YW61083500000	Inner hex column head screw M8×1	12.9	4	2	YW61082500100	Inner hex column head screw M8×1	12.9	20	
17	-	Feed box assembly	Assembly	1	1	YW03000300500	Fixed roller 3"		2	

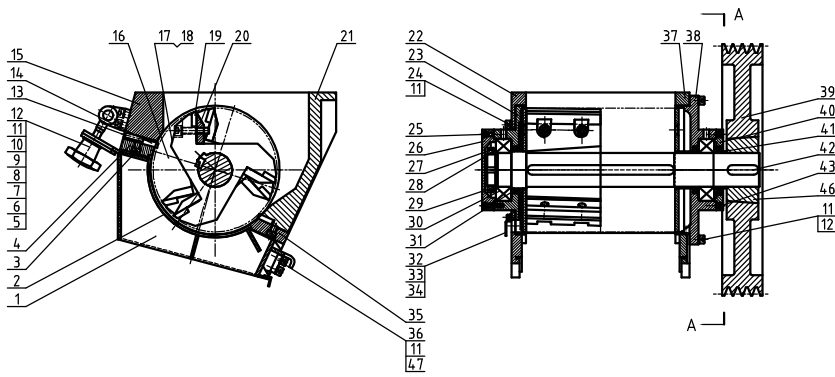
制图	版号	标题	图号	比例	数量
设计	核准	SG-2324		1:1	
校对		总成		材料	
审核	日期	SHINI 信易电热机械股份有限公司 Shini Plastics Technologies, Inc.		表面要求	
标记	更改前	更改后	更改人	物料号	



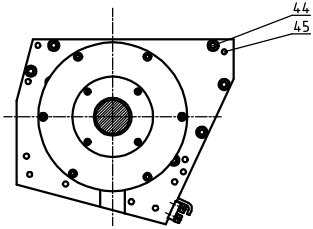
9	BW30023005420	Small taper sleeve SG-23-2012-38 HT250 (assembly)	HT250	1	
8	BW30002305320	Small ball pulley SG-23/28-SP118-04-2012 HT250 (assembly)	HT250	1	
7	YR00160000100	V-belt (XPA-1600LP)		4	
6	YM10205500400	Motor V18 55kW-32S-4P 83T IEC 23W/1/0W/40V		1	
5	YW60104000100	Hex bolt GB/T15783 M10x40-8.8-Longline		4	
4	YW65010000000	Standard spring washer GB/T93 D-Longline	65Mn	4	
3	BL21162300020	Wear adjustable plate	Q235A	2	
2	YW66103200000	Large washer A grade GB/T96 100W5x30x2.5-Longline	14.0HV	8	
1	YW60108000000	Hex bolt GB/T15783 M10x80-8.8-Longline		2	

序号	代号	名称	材质	数量	备注
		制图			
		设计			
		校对			
标记	更改前	更改后	更改人	日期	审核
		版号			
		标题			
		图号			
		比例			
		数量			
		表面要求			
		物料号			

SHINI 信昌電熱機械股份有限公司
Shini Plastics Technologies, Inc.



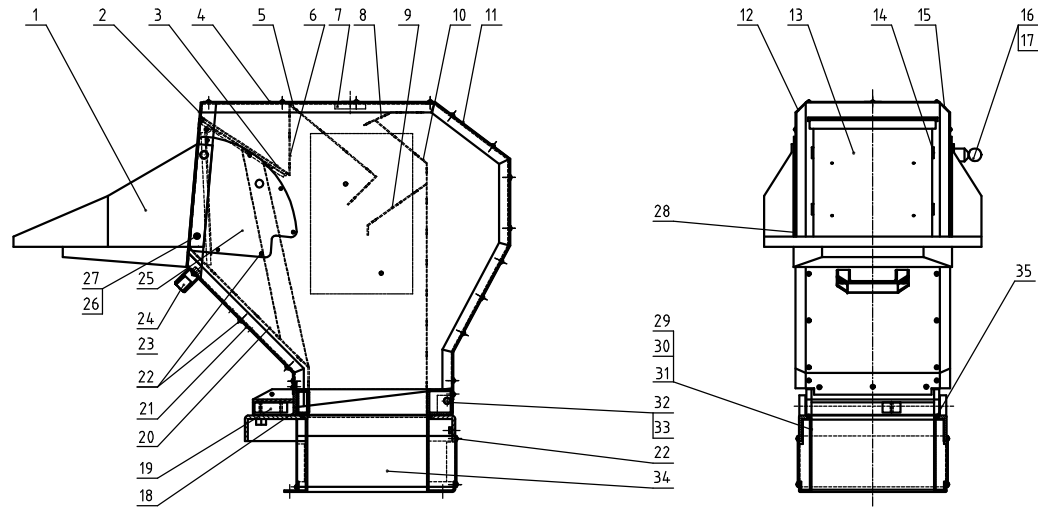
A-A



4.7	YW61082001200	Inner hex. outer hex. screw Q1711045-43 Length		4		25	YW61052500000	Inner hex. outer hex. screw Q1711045-43 Length		4	
4.6	BW30023005320	Big taper stone 36-33-300-55HT20(Lowtemp)		1		24	YW61081600000	Inner hex. outer hex. screw Q1711045-43 Length		4	
4.5	YW69083500000	Elastic round pin GB/T 8791.8-05	65Mn	8		23	BH10232600010	Left bearing base	QT500-7	1	
4.4	YW61103500000	Inner hex. outer hex. screw Q1711045-43 Length		14		22	BH10232500010	Left end plate	Q235A	1	
4.3	YW61050600300	Inner hex. outer hex. screw Q1711045-43 Length		4		21	BH11232480010	Rear case block	QT500-7	1	
4.2	BH10231500010	Flat key 16x10x50	45	1		20	BH10125000010	Rotating blade pressing plate	45	6	
4.1	BH10231400010	Ball screw?	Q235A	1		19	YW42023001000	Rotating blade	SKD11	6	
4.0	BH10232300010	Right bearing cover plate	Q235A	1		18	YW65010000000	Standard spring washer GB/T93 10 Length	65Mn	12	
39	BW30233012040	Big flat pulley 50.5*59.5*60-6-30HT20(Lowtemp)	HT250	1		17	YW61104000200	Inner hex. outer hex. screw Q1711045-43 Length		12	
38	BH10231200010	Right end plate	Q235A	1		16	-	Blade rest shaft	assembly	1	
37	BH10231100010	Right end plate	Q235A	1		15	BH11232450010	Front case block	QT500-7	1	
36	BL54232402520	Standard tapping plate	SPH10.0	1		14	YW42232400100	Fixed blade	SKD11	2	
35	BW30232400410	Bar pressing block	Q235A	1		13	YW68083000000	Inner hex. outer hex. screw Q1711045-43 Length	12.9	2	
34	YW61050800000	Inner hex. outer hex. screw Q1711045-43 Length		2		12	YW61082500100	Inner hex. outer hex. screw Q1711045-43 Length		8	
33	YW65050000000	Standard spring washer GB/T93	65Mn	2		11	YW65008000100	Standard spring washer GB/T93 8 Length	65Mn	16	
32	BL54230002420	Anti-dust cover	SPCC1.5	1		10	YW66123200100	Large washer A grade GB/T96 10.5-10.5 Length	14.0HV	1	
31	YR80756000000	Oil seal 75x60x8	rubber	3		9	YW69001600000	External retaining ring GB/T 191.14-2000	65Mn	1	
30	YW11221006000	Spherical roller bearing 22211C	GCr15	2		8	YW09301400000	Shaft pin	45	1	
29	YW09521600000	Rotating washer for round nut S2	Q215	1		7	YW09003010500	Star screw	45	1	
28	YW65215000000	Seal round GB/T810 M5x15	45	1		6	BL54300003920	Chain base	SPH8.0	1	
27	BL54230003120	Bearing washer	SPCC2.0	1		5	YW09001200500	Star nut M12	ZG230-450	1	
26	BH10232700010	Left bearing base cover plate	QT500-7	1		4	BW30232400110	Front pressing block	Q235A	1	

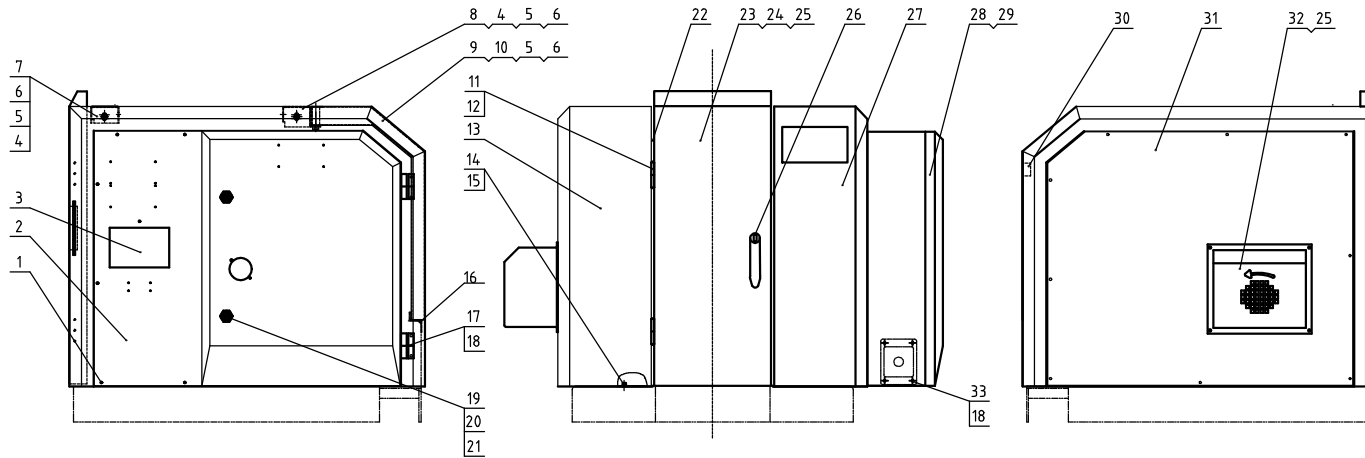
标记	更改前	更改后	更改人	日期	审核	日期	标题	图号	比例	数量	备注
							SG-2324		1:1		
							粉碎室总成		材料		
									表面要求		
									物料号		





35	YR90006004.00	Black rubber sealing strip (Dia: 6mm)		1m		17	YW01101000000	Spring Mill	65Mn	0.04-m	
34	-	Cutting case cover plate 3	SPCC2.0	1		16	YW30003600100	Sub handle SG-36		1	
33	YW68005500000	Inner hex. flat end lock screw Ø17/17x16.5 Longpin		2		15	-	Feed box right cover plate	SPCC1.5&3.0	1	
32	BH10300800004.0	Feed box retaining shaft	Q235A	2		14	-	Feed box side plate	SECC2.0	2	
31	-	Cutting chamber cover plate 2	SPCC2.0	1		13	-	Fender plate assembly	assembly	1	
30	-	Cutting chamber cover plate 1	SPCC2.0	1		12	-	Feed box left cover plate	SPCC1.5	1	
29	BL542324-08920	Cutting chamber	SPCC3.0	1		11	-	Rear cover plate	SPCC1.5	1	
28	-	Feed port fixed plate without hole	SUS201	1		10	-	Rear foleded plate	SECC2.0	1	
27	YW66081900000	Flat washer 8x19x2.0 Longzinc	14.0HV	2		9	-	Rear middle foleded plate	SECC2.0	1	
26	YW61082501200	Inner hex. column head screw M12.5	12.9	2		8	-	Rear upper foleded plate	SECC2.0	1	
25	-	Feed port fixed plate with hole	SUS201	1		7	-	Nut plate	SPH10.0	1	
24	BW2001200014.0	Handle		1		6	-	Top vertical plate	SECC2.0	1	
23	YW61082000000	Inner hex. column head screw Ø17/17x16.5 Longpin		2		5	-	Top middle foleded plate	SECC2.0	1	
22	YW67051000000	Inner hex. column head screw Ø17/17x16.5 Longpin		71		4	-	Top cover plate	SPCC1.5	1	
21	-	External cover front plate	SPCC1.5	1		3	-	Top foleded plate	SECC2.0	1	
20	-	Front foleded plate	SECC2.0	1		2	-	Hopper port	SECC3.0	1	
19	BH13300700010	Switch fixed block	6061	1		1	-	Feed port	SPCC2.0	1	
18	-	Square pipe bracket	welding parts	1							

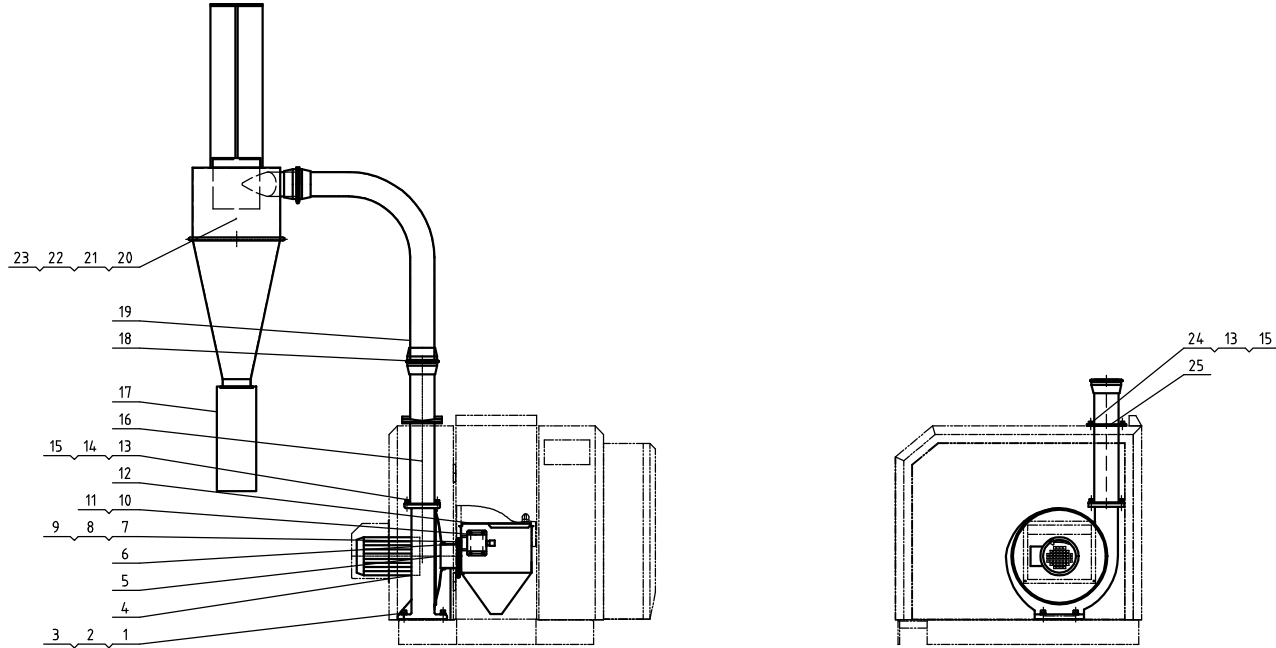
标记	更改前	更改后	更改人	日期	制图	版号	标题	图号	比例	数量	备注
					设计	核	SG-2324				
					设计	准	进料箱总成				
					校对		 信易電熱機械股份有限公司 Shini Plastics Technologies, Inc.				
					审核			表面要求			
							物料号				



18	YW61051000200	Cross recessed pan head screw M5*10	4.8	20			
17	YW06203100200	Large chain (1203-1 right)		4			
16	-	Motor cover plate fender	SPCC2.0	1			
15	YW66061300000	Flat washer 6	140HV	18			
14	YW61061600200	Inner hex. column head screw M6*16	12.9	18			
13	-	Left shell	SPCC2.0	1			
12	YW61051000100	Large cross recessed flat head screw M5*10		12			
11	YW06253200000	Hinge CL253-2(Shengjiu)		2			
10	YW61086500000	Inner hex. column head screw M8X65	12.9	2			
9	-	Motor cover plate	SPCC2.0	1			
8	-	Rear upper cover plate	SPCC2.0	1			
7	-	Front upper cover plate	SPCC2.0	1			
6	YW66081900000	Flat washer 8*19*2.0 Longzine	140HV	6			
5	YW65008000100	Spring washer 8	65Mn	6			
4	YW61082501200	Inner hex. column head screw M8X25	12.9	4			
3	BR90367504310	Sight plate	Acrylic	1			
2	-	Control box bottom plate	SPCC2.0	1			
1	YW62052500000	Cross recessed pan head screw M5*25	4.8	15			
		序号	代号	名称	材质	数量	备注

33	BL50135000020	Wire clamp fixed plate P6035 56-5-01	SPCC2.0	1	
32	-	Blower motor cover shell	SPCC2.0	1	
31	-	Left shell cover plate	SPCC2.0	1	
30	YR40914040000	Plastic ladder handle 9*40		1	
29	-	Wiring plate	SECC1.5	1	
28	-	Control box door plank	SPCC2.0	1	
27	-	External right shell	SPCC2.0	1	
26	YW00004500000	Door lock M-45-B	Alum. alloy	1	
25	YW67481900000	Cross recessed pan head large screw S14.8*19		14	
24	-	Door screen plate	screen plate t5	1	
23	-	Front door	SPCC2.0	1	
22	YR10011000100	3 compound sealant stripsd11		7.1m	
21	YW00040600200	Door lock key CF-406-H		2	
20	YW00040600000	Door lock long fender	Q235A	2	
19	YW00000000100	Long door lock	Alum. alloy	2	

					制图	版号	标题	图号	比例	数量
					设计	核	SG-2324		1:1	1
					校对	准	护罩部件			
					审核					
标记	更改前	更改后	更改人	日期	审核	日期	SHINI 信易电热机械股份有限公司 Shini Plastics Technologies, Inc.		表面要求	物料号

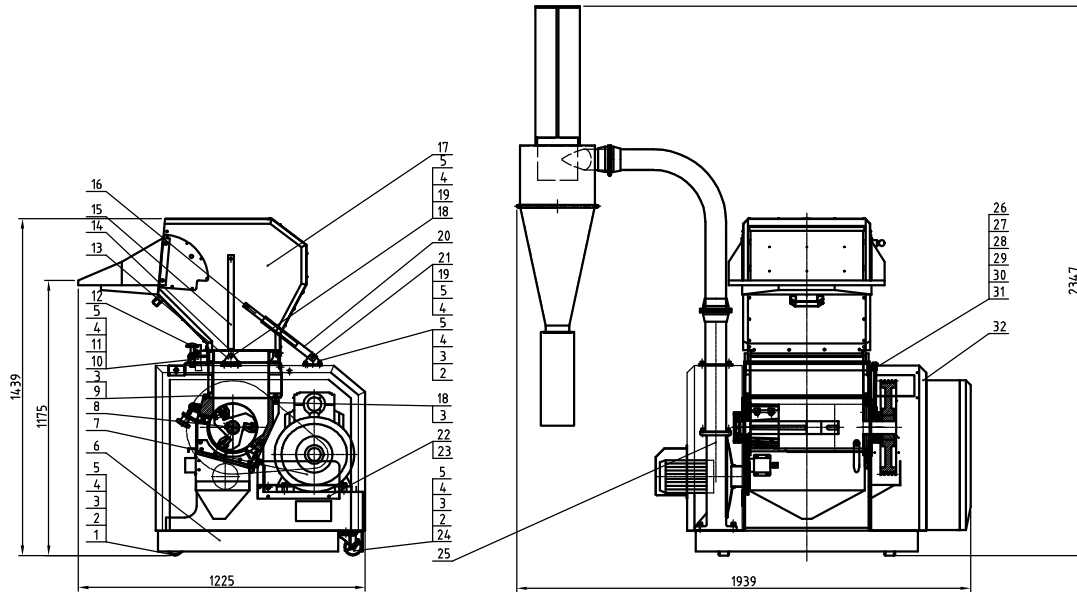


13	YW61082501200	Hex hex. column head screw M8X25	12.9	8	
12	-	Storage collective box	SUS201(1.5)	1	
11	YW61051000200	Orns.nressed pan head screw M5X10	4.8	4	
10	-	Helical switch assembly		1	
9	YW62052500000	Orns.nressed pan head screw M5X25	4.8	3	
8	-	Pressing plate	SPCC2.0	1	
7	YR10002300000	Discharge port fastener	silica pt	1	
6	-	Backing plate	SPCC3.0	1	
5	-	Blower suction port pipe	SPCC1.5	1	
4	BM30055000250	Conveying blower 6.55KW		1	
3	YW66103200000	Spring washer 4 grade M10X20X2.5	14.0HV	4	
2	YW65010000000	Spring washer W	65Mn	4	
1	YW61104.000200	Hex hex. column head screw M10X4.0	12.9	4	
14	YW65008000100	Spring washer 8	65Mn	4	
25	-	Discharge pipe fixed flange	SPH6.0	2	
24	YW64.000800100	Hex nut M8 anti-loose		4	
23	YW02000700000	Pipe clamp 1"	SUS202	1	
22	BP8232190014.4	Filter cloth bag 1	Nylon Mesh	1	
21	-	Collective cloth bag bracket	Q235A	1	
20	-	Cyclone separator assembly		1	
19	BL54.300007920	Discharge elbow	Welding parts	1	
18	YW070004.00000	Stainless steel pipe clamp 4"		2	
17	BP8218180004.4	Filter cloth bag 2	Filter cloth	1	
16	-	Discharge pipe	Welding parts	1	
15	YW66081900000	Flat washer 8x19x2.0 Longzine	14.0HV	12	

序号	代号	名称	材质	数量	备注																																				
<table border="1" style="width:100%; border-collapse: collapse;"> <tr> <td style="width:20%;"></td> <td style="width:20%;"></td> <td style="width:20%;"></td> <td style="width:20%;"></td> <td style="width:20%;"></td> <td style="width:20%;"></td> </tr> <tr> <td>制图</td> <td></td> <td>版号</td> <td></td> <td>标题</td> <td>图号</td> </tr> <tr> <td>设计</td> <td></td> <td>核准</td> <td></td> <td>SG-2324</td> <td></td> </tr> <tr> <td>校对</td> <td></td> <td></td> <td></td> <td>自动送料总成</td> <td></td> </tr> <tr> <td>审核</td> <td></td> <td></td> <td></td> <td rowspan="2"> </td> <td></td> </tr> <tr> <td>标记</td> <td>更改前</td> <td>更改后</td> <td>更改人</td> <td>日期</td> <td>日期</td> </tr> </table>												制图		版号		标题	图号	设计		核准		SG-2324		校对				自动送料总成		审核						标记	更改前	更改后	更改人	日期	日期
制图		版号		标题	图号																																				
设计		核准		SG-2324																																					
校对				自动送料总成																																					
审核																																									
标记	更改前	更改后	更改人		日期	日期																																			
				比例	数量																																				
					材质																																				
				表面要求																																					
				物料号																																					

SHINI 信昌電熱機械股份有限公司
Shini Plastics Technologies, Inc.

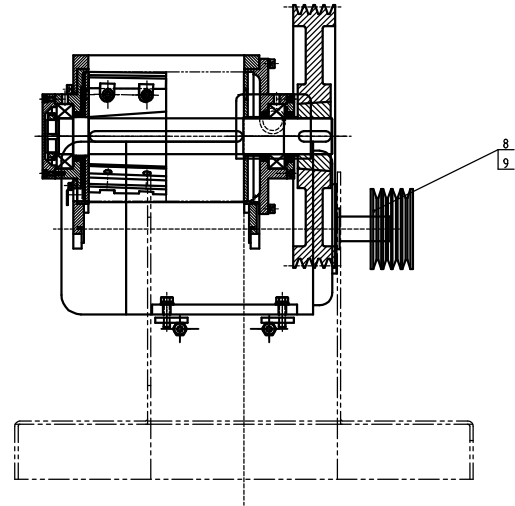
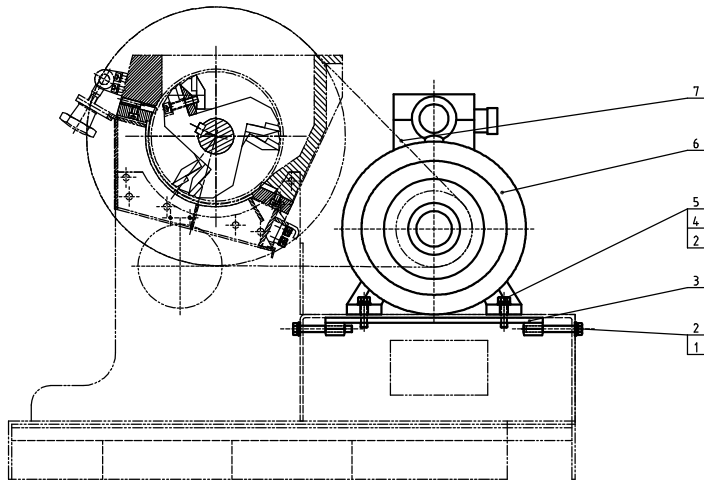
Standard weight(kg)	Noise level dB(A)	Max. cutting ability kg/hr	Cutting Chamber Size (mm)	Rotating Cutter Qty.	Feed Cutter Qty.	Cutter Material	Main Shaft Speed (r.p.m)	Motor Power (kW, 50/60Hz)	Ver. No.
520	90-95	120	230×360	3×3	2	SKD11	4.15	7.5/8.6	Ver.F



Note: 1) Maximum cutting ability depends on the screen diameter, material size and material type;
 2) During cutting, the noise level varies depending on different materials and motor configuration;
 3) SKD 11 is JIS standard;
 4) To avoid plastic sticking, all materials to be granulated must be processed at normal temperature;
 5) Power supply: 3Φ, 400VAC, 50Hz

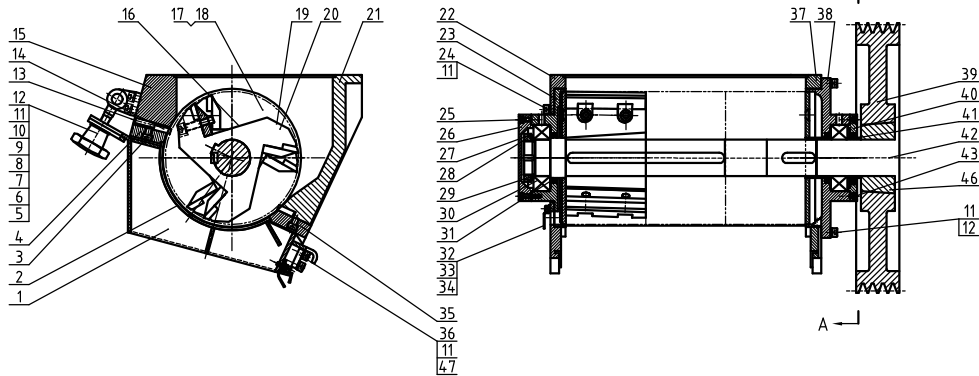
32	-	Shield	Assembly	1	16	BH10300500110	Support pipe 1	Q235A	1
31	YW04010100000	Oil nozzle M16x1	H62	2	15	BH10300400110	Air spring sleeve	Q235A	1
30	BH12000301010	3" copper nut	H62	4	14	YW01060000100	Air pressure spring 60MM		1
29	BH10360100010	Oil pipe nut	H62	2	13	-	Air spring support base	SPH4.0	2
28	BH10361100010	3/8 copper pipe ext. connector	H62	2	12	BH11300200010	Feed box star assembly	Assembly	2
27	BH12361000010	3/8 copper pipe inner connector	H62	2	11	YW61082000200	Inner hex column head screw M6x5	12.9	1
26	BH12230300010	Oil filling pipe	TP2	2	10	-	nut	SPH6.0	1
25	-	Auto conveying assembly	Assembly	1	9	YW61081600000	Inner hex column head screw M6x5	12.9	3
24	YW03000300900	Side movable castor 3"		2	8	-	Cutting chamber assembly	Assembly	1
23	YW62061000000	Large cross recessed flat head screw M6x5		3	7	-	Main transmission gear	Assembly	1
22	-	Safety screen plate	screen plate 15	1	6	-	Rack assembly	Welding parts	1
21	YW61085000000	Inner hex column head screw M6x5		3	5	YW64000800100	Hex nut M6 anti-loose		25
20	BH10436001810	Support pipe 2	Q235A	1	4	YW66081600000	Flat washer 8	140HV	35
19	YW64080600000	Hex. nut GB/T1610 M6-Longzine		4	3	YW65008000100	Spring washer 8	65Mn	26
18	YW61083500000	Inner hex column head screw M6x5	12.9	4	2	YW61082500100	Inner hex column head screw M6x5	12.9	20
17	-	Feed box assembly	Assembly	1	1	YW03000300500	Feed castor 3"		2

标题	SG-2336	图号		比例	数量	备注
设计	总成	核		材料		
校对		准		表面要求		
标记	更改前	更改后	更改人	日期	审核	日期
				SHINI 信易电热机械股份有限公司 Shini Plastics Technologies, Inc.		物料号

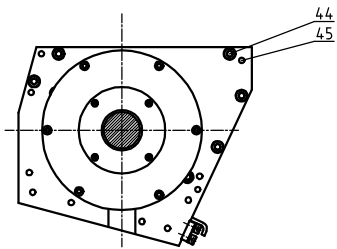


9	BW30023005420	Small taper sleeve SG-23-2012-38HT250 (assembly)	HT250	1	
8	BW30002305320	Small ball pulley SG-23/38-SK418-04-202HT250 (assembly)	HT250	1	
7	YR00160000100	V-belt (XPA-1600LP)		4	
6	YM10207500400	Motor W20 75KW-02N-4P B31 E3 230/400/400V		1	
5	YW60104000100	Hex bolt GB/T5783 M10-4.0-8-Longline		4	
4	YW65010000000	Standard spring washer GB/T93 W-Longline	65Mn	4	
3	BL21162300020	Motor adjustable plate	Q235A	2	
2	YW66103200000	Large washer A grade GB/T96 M10Sx30x2.5-Longline	14.0HV	8	
1	YW60108000000	Hex bolt GB/T5783 M10-8.8-Longline		2	
序号	代号	名称	材质	数量	备注

					制图	版号	标题	图号	比例	数量	
					设计	核准	SG-2336		1:1	1	
					校对		主传动装置			材质	
标记	更改前	更改后	更改人	日期	审核	日期	信昌电热机械股份有限公司 Shini Plastics Technologies, Inc.		表面要求	物料号	

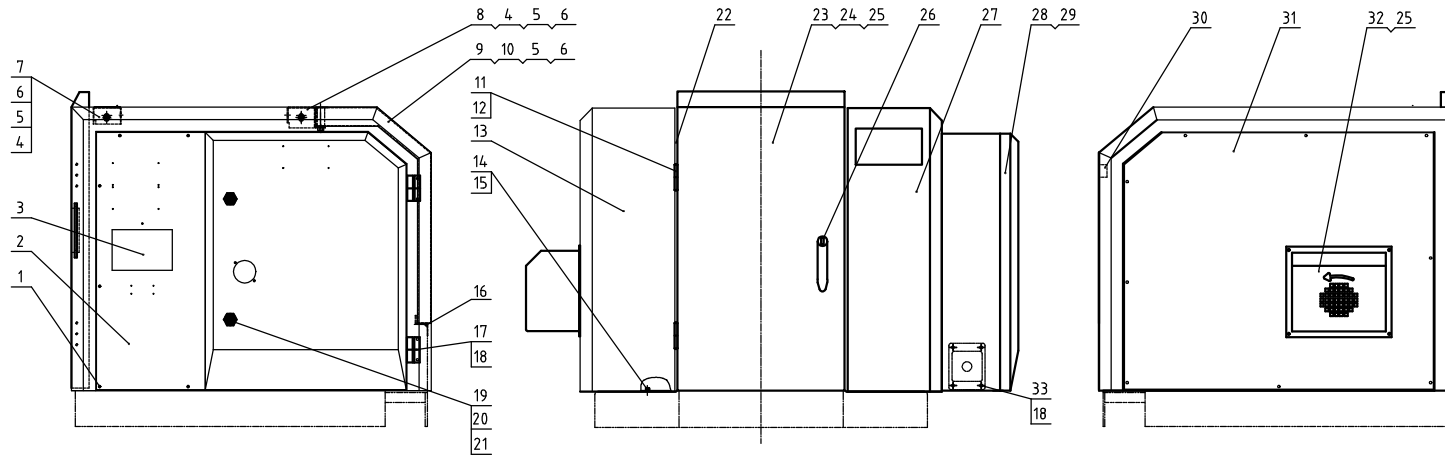


A-A



47	YW61082001200	Inner hex column head screw @T711M6-8-Langite		4		25	YW61052500000	Inner hex column head screw @T711M6-8-Langite		4	
46	BW30023005320	Big taper sleeve S6-23-3038-5511274 (assembly)	HT250	1		24	YW61081600000	Inner hex column head screw @T711M6-8-Langite		4	
45	YW69083500000	Elastic round pin GB/T 8791.8-25	65Mn	8		23	BH10232600010	Left bearing base	QT500-7	1	
44	YW61103500000	Inner hex column head screw @T711M6-8-Langite		14		22	BH10232500010	Left end plate	Q235A	1	
43	YW61050600300	Inner hex column head screw @T711M6-8-Langite		4		21	BH10236500010	Rear case block	QT500-7	1	
42	BH10231500010	Flat key 16x10x50		45	1	16	-	Blade rest shaft	assembly	1	
41	BH10231400010	Shaft sleeve?	Q235A	1		15	BH11233650010	Front case block	QT500-7	1	
40	BH10232300010	Right bearing ret. cover plate	Q235A	1		14	YW42233600100	Fixed blade	SKD11	2	
39	BW30233012040	Right ball pulley S6-2339-57408-3038230 (assembly)	HT250	1		13	YW68083000000	Inner hex flat washed screw @T711M6-8-Langite	12.9	2	
38	BH10231200010	Right bearing base	QT500-7	1		12	YW61082500100	Inner hex column head screw @T711M6-8-Langite		10	
37	BH10231100010	Right end plate	Q235A	1		11	YW65008000100	Standard spring washer @T711M6-8-Langite	65Mn	18	
36	BL54233644620	Screen bracket long plate	SPH10.0	1		10	YW66123200100	Large washer A grade @T711M6-8-Langite	14.0HV	2	
35	BW30233600410	Bar pressing block	Q235A	1		9	YW69001600000	External retaining ring @T711M6-8-Langite	65Mn	2	
34	YW61050800000	Inner hex column head screw @T711M6-8-Langite		2		8	YW09301400000	Shaft pin	45	2	
33	YW65050000000	Standard spring washer @T711M6-8-Langite	65Mn	2		7	YW09003010500	Star screw	45	2	
32	-	Anti-dust cover	SPCC1.5	1		6	BL54300003920	Chain base	SPH8.0	2	
31	YR80756000000	Oil seal 75x60x8	rubber	3		5	YW09001200500	Star nut M2	ZG230-45C	2	
30	YW11222100600	Spherical roller bearings 22211C	GCr15	2		4	BW30233600110	Front pressing block	Q235A	1	
29	BL54230003120	Bearing washer	SPCC2.0	1		3	YW61083000000	Inner hex column head screw @T711M6-8-Langite		12	
28	YW09521600000	Retaining washer for round nut S2	Q215	1		2	BL54233600820	Screen bracket	45	1	
27	YW65215000000	Small round nut GB/T810 MS2-15	45	1		1	-	Screen bracket assembly	waiting parts	1	
26	BH10232700010	Left bearing base cover plate	QT500-7	1							

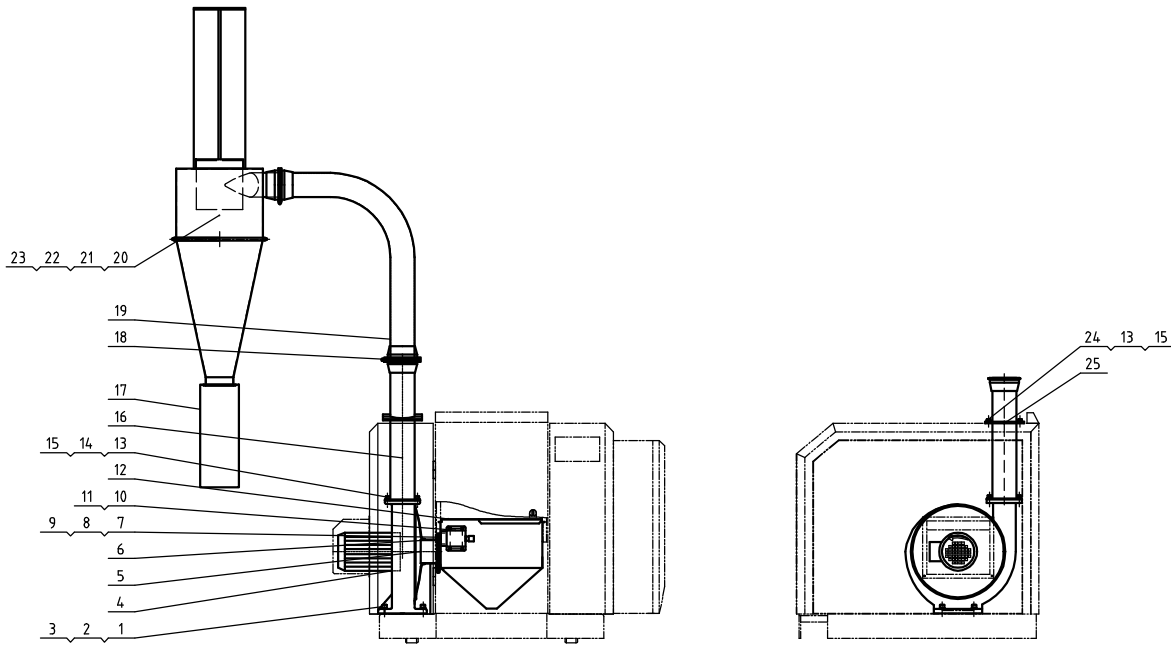
标记	更改前	更改后	更改人	日期	制图	版号	标题	图号	比例	数量	备注
							SG-2336 粉碎室总成				
											表面要求
							SHINI 信易电热机械股份有限公司 Shini Plastics Technologies, Inc.				物料号



33	BL45000502120	Wire clamp fixed plate M25 SG-S-01	SPCC2.0	1	
32	-	Blower motor cover shell	SPCC2.0	1	
31	-	Left shell cover plate	SPCC2.0	1	
30	YR40914.04.0000	Plastic ladder handle 9x44		1	
29	-	Wiring plate	SECC1.5	1	
28	-	Control box door plank	SPCC2.0	1	
27	-	External right shell	SPCC2.0	1	
26	YW00004500000	Door lock M-45-B	Alum. alloy	1	
25	YW67481900000	Cross recessed pan head tapping screw ST4.8-19		15	
24	-	Door screen plate	screen plate 15	1	
23	-	Front door	SPCC2.0	1	
22	YR10011000100	3 compound sealant strip(d01)		7.1m	
21	YW000040600200	Door lock key CF-406-H		2	
20	YW000040600000	Door lock long fender	Q235A	2	
19	YW00000000100	Long door lock	Alum. alloy	2	

18	YW61051000200	Cross recessed pan head screw M5x10		4.8	20	
17	YW06203100200	Large chain CL195-1 (right)			4	
16	-	Motor cover plate fender	SPCC2.0		1	
15	YW66061300000	Flat washer 6	140HV		18	
14	YW61061600200	Inner hex. column head screw M6x16		12.9	18	
13	-	Left shell	SPCC2.0		1	
12	YW62051000100	Large cross recessed flat head screw M5x10			12	
11	YW06253200000	Hinge CL253-2(Shengjiu)			2	
10	YW61086500000	Inner hex. column head screw M8x25		12.9	2	
9	-	Motor cover plate	SPCC2.0		1	
8	-	Rear upper cover plate	SPCC2.0		1	
7	-	Front upper cover plate	SPCC2.0		1	
6	YW66081900000	Flat washer 8x19x2.0 Longzine	140HV		6	
5	YW65008000100	Spring washer 8	65Mn		6	
4	YW61082501200	Inner hex. column head screw M8x25		12.9	4	
3	BR90367504310	Sign plate	Acrylic		1	
2	-	Control box bottom plate	SPCC2.0		1	
1	YW62052500000	Cross recessed pan head screw M5x25		4.8	15	

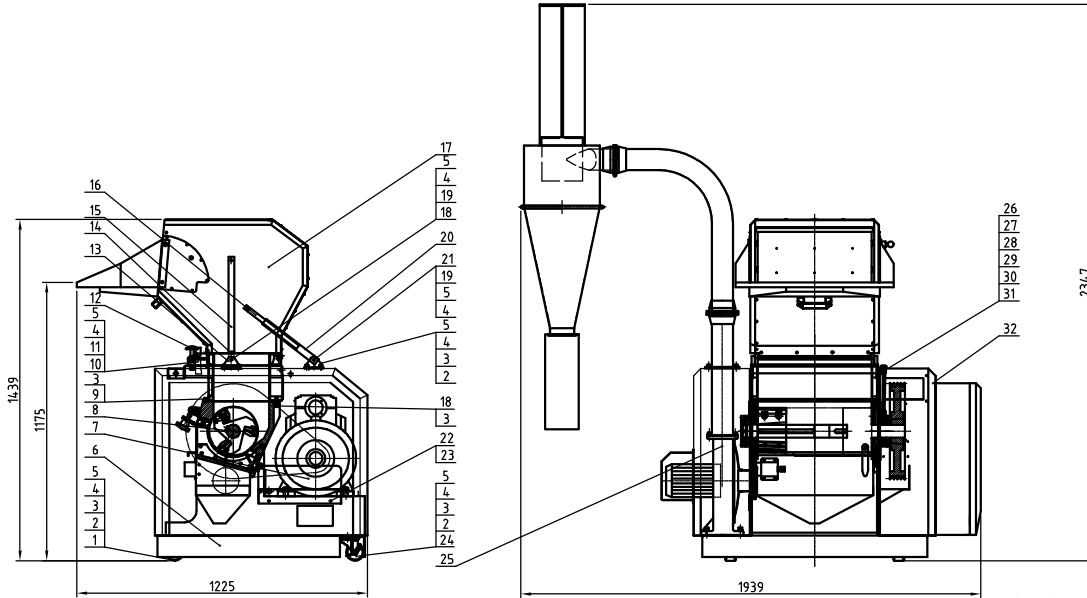
				制图	版号	标题	图号	比例	数量
				设计	核	护罩部件	SG-2336	1:1	4
				校对	准	SHINI 信易电热机械股份有限公司 Shini Plastics Technologies, Inc.		表面要求	材质
标记	更改前	更改后	更改人	日期	审核	日期	物料号		



25	-	Discharge pipe fixed flange	SPH6.0	2	13	YW61082501200	Hex hex column head screw M8X25	12.9	8	
24	YW64.000800100	Hex nut M8 anti-loose		4	12	-	Storage collective box	SUS201(115)	1	
23	YW02000700000	Pipe clamp 7"	SUS202	1	11	YW61051000200	Cross recessed pan head screw rvsx10	4.8	4	
22	BP82321900144	Filter cloth bag 1	Nylon Mesh	1	10	-	Helical switch assembly		1	
21	-	Collective cloth bag bracket	Q235A	1	9	YW62052500000	Cross recessed pan head screw rvsx25	4.8	3	
20	-	Cyclone separator assembly	assembly	1	8	-	Pressing plate	SPCC2.0	1	
19	BL54.300007920	Discharge elbow	welding parts	1	7	YR10002300000	Discharge port fastener	silica gel	1	
18	YW070004.00000	Stainless steel pipe clamp 4"		2	6	-	Backing plate	SPCC3.0	1	
17	BP82181800044	Filter cloth bag 2	Filter cloth	1	5	-	Blower suction port pipe	SPCC1.5	1	
16	-	Discharge pipe	welding parts	1	4	BM30055000250	Conveying blower 0.55KW		1	
15	YW66081900000	Rial washer 8x19x2.0 Longzine	14.0HV	12	3	YW66103200000	Large washer 3 grade 8.8 10.9 12.9 14.9	14.0HV	4	
14	YW65008000100	Spring washer 8	65Mn	4	2	YW65010000000	Spring washer 10	65Mn	4	
					1	YW61104.0002000	Hex hex column head screw M10X40	12.9	4	

标记	更改前	更改后	更改人	日期	制图	版号	标题	图号	比例	数量	备注
					设计	核	SG-2336				
					校对	准	自动送料总成				
					审核	日期	SHINI 信易电热机械股份有限公司 Shini Plastics Technologies, Inc.		表面要求		
									物料号		

Standard weight(kg)	Noise level (dB(A))	Max. cutting ability (kg/hr)	Cutting Chamber Size (mm)	Rotating Cutter Qty.	Fixed Cutter Qty.	Cutter Material	Main Shaft Speed (r.p.m)	Motor Power (kw. S3/45Hz)	Ver. No.
600	90~95	150	230×480	3×4	2	SKD11	415	11/12.6	Ver.F

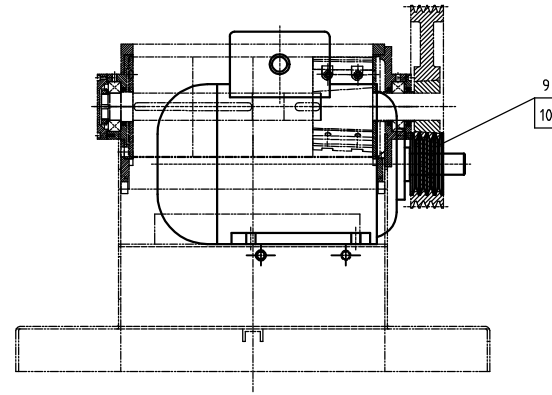
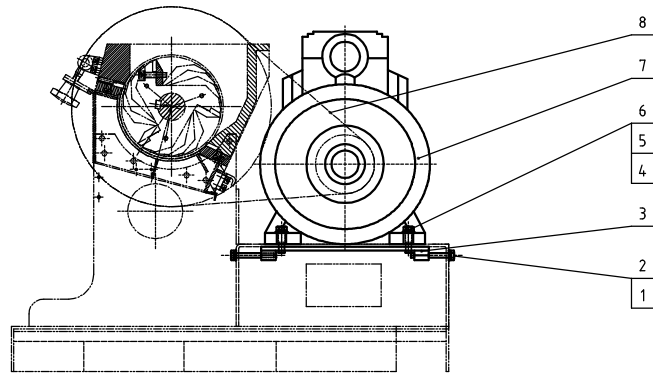


Note: 1) Maximum cutting ability depends on the screen diameter, material size and material type;
 2) During cutting, the noise level varies depending on different materials and motor configuration;
 3) SKD 11 is JIS standard ;
 4) To avoid plastic sticking, all materials to be granulated must be processed at normal temperature;
 5) Power supply: 3Ø,400V AC,50Hz

32	-	Shield	Assembly	1	16	BH10300500110	Support pipe 1	Q235A	1
31	YW04010100000	Oil nozzle M10-1	H62	2	15	BH10300400110	Air spring sleeve	Q235A	1
30	BH12000301010	3" copper nut	H62	4	14	YW01060000100	Air pressure spring 60N		1
29	BH10360100010	Oil pipe nut	H62	2	13	-	Air spring support base	SPH4.0	2
28	BH10361100010	3/8 copper pipe ext. connector	H62	2	12	BH11300200010	Feed box star assembly	Assembly	2
27	BH12361000010	3/8 copper pipe inner connector	H62	2	11	YW61082000200	Inner hex column head screw M8-0.5	12.9	1
26	BH12230300010	Oil filling pipe	TP2	2	10	-	link	SPH6.0	1
25	-	Auto conveying assembly	Assembly	1	9	YW61081600000	Inner hex column head screw M8-0.5	12.9	3
24	YW03000300900	Side movable castor 3"		2	8	-	Cutting chamber assembly	Assembly	1
23	YW62061000000	Large cross recessed flat head screw M8-0.5		3	7	-	Main transmission gear	Assembly	1
22	-	Safety screen plate	screen plate 15	1	6	-	Rack assembly	Welding parts	1
21	YW61085000000	Inner hex column head screw M8-0.5	12.9	3	5	YW64000800100	Hex nut M8 anti-loose		25
20	BH10436001810	Support pipe 2	Q235A	1	4	YW66081600000	Flat washer 8	140HV	35
19	YW64080600000	Hex nut GB/T6170 M8-Longzine		4	3	YW65008000100	Spring washer 8	65Mn	26
18	YW61083500000	Inner hex column head screw M8-0.5	12.9	4	2	YW61082500100	Inner hex column head screw M8-0.5	12.9	20
17	-	Feed box assembly	Assembly	1	1	YW03000300500	Fastener 3"		2

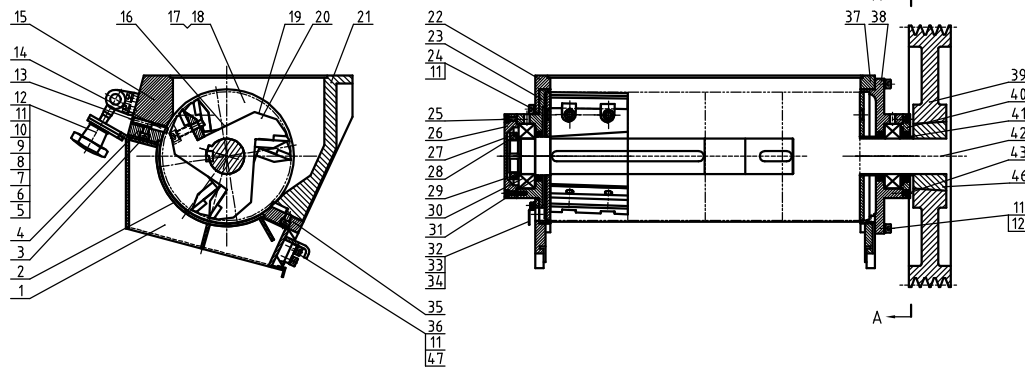
标题	SG-234.8	图号	SG-234.8-ALL	比例	数量	备注
设计		校核		表面要求	材质	
校对		审核		物料号		
标记	更改前	更改后	更改人	日期	审核	日期



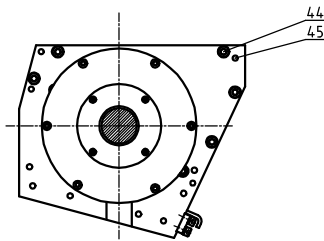


10	BW30003005320	Small taper sleeve SG-20-2012-42 HT250 (assembly)	HT250	1	
9	BW30002305320	Small belt pulley SG-23/28-SPA10-04-2012 HT250 (assembly)	HT250	1	
8	YR00160000100	V-belt (XPA-1600LP)		4	
7	YM102011004.00	Motor W20 110W-160L-4P B3T E3 400/600/460V		1	
6	YW65012000000	Standard spring washer GB/19312-Longzine	65Mn	4	
5	YW661224.000000	Flat washer A grade GB/1911 02035-24x23-Longzine	14.0HV	4	
4	YW601245000000	Hex bolt GB/15783 M12x45-8.8-Longzine		4	
3	BH10306500210	Motor adjustable plate	Q235A	2	
2	YW661032000000	Large washer A grade GB/196 11055x30x23-Longzine	14.0HV	4	
1	YW601080000000	Hex bolt GB/15783 M10x80-8.8-Longzine		2	
序号	代号	名称	材质	数量	备注

					制图		版号		标题	SG-2348	图号		比例		数量
					设计		核		主传动装置				材质		
					校对		准		信易电热机械股份有限公司 Shini Plastics Technologies, Inc.			表面要求			
标记	更改前	更改后	更改人	日期	审核		日期							物料号	

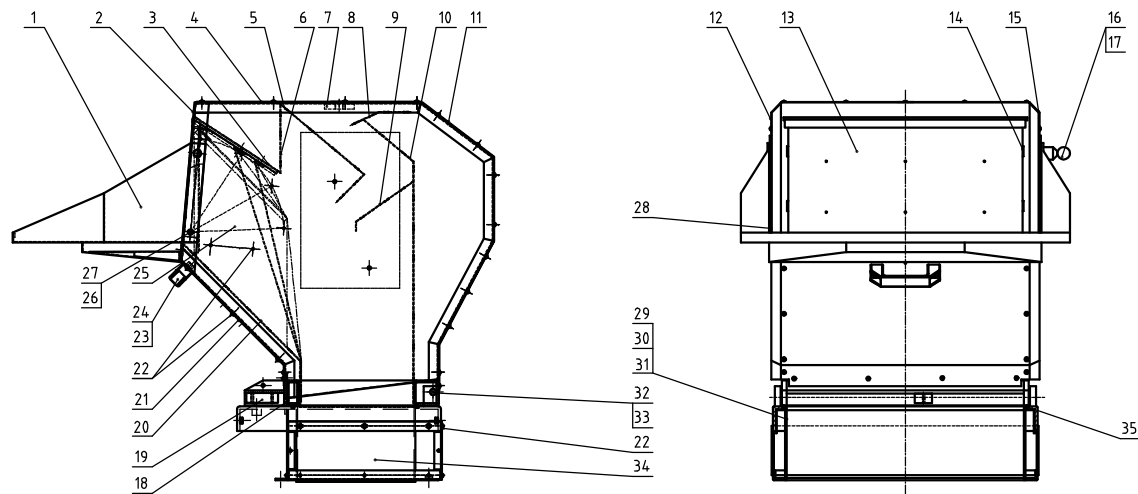


A-A



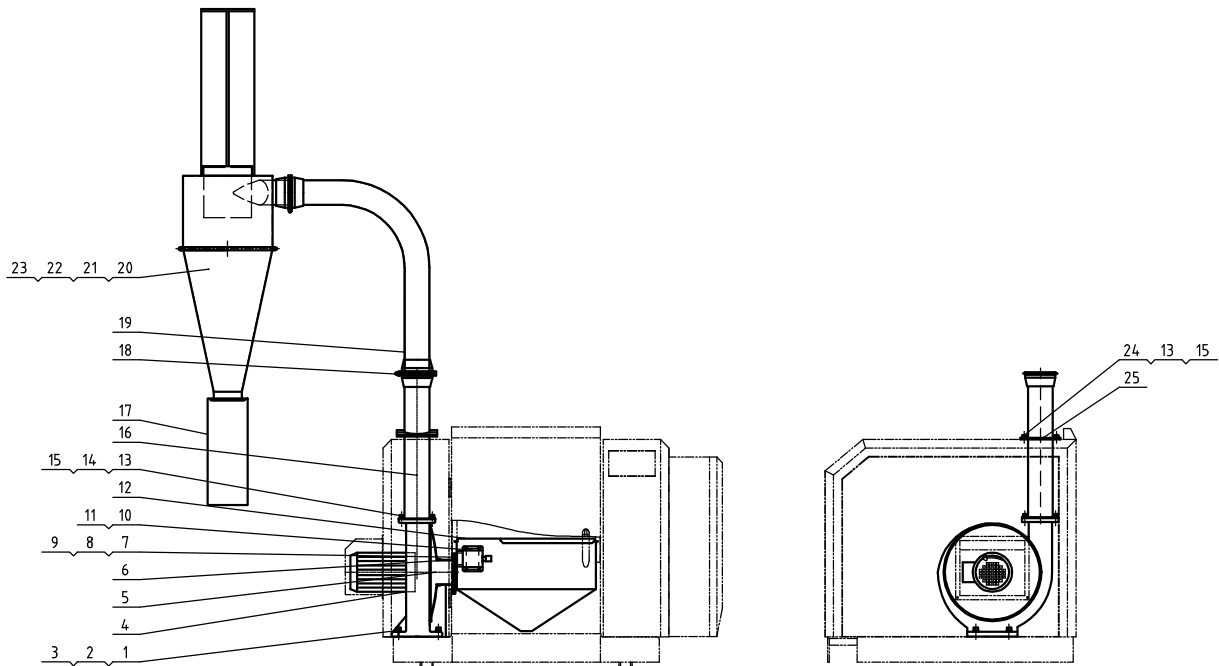
47	YW61082001200	hex hex column head screw GB/T11023-21 Langle		4		25	YW61052500000	hex hex column head screw GB/T11023-21 Langle		4	
46	BW30023005320	big taper sleeve SS-25-30B-55 #120(assembly)	QT500-7	1		24	YW61081600000	hex hex column head screw GB/T11023-21 Langle		4	
45	YW69083500000	elastic cylindrical pin GB/T 8791.18-25	65Mn	8		23	BH10232600010	Left bearing base	QT500-7	1	
44	YW61103500000	hex hex column head screw GB/T11023-21 Langle		14		22	BH10232500010	Left end plate	Q235A	1	
43	YW61050600300	hex hex column head screw GB/T11023-21 Langle		4		21	BH10230800010	Rear case block	QT500-7	1	
42	BH10231500010	Flat key 16x10x50	45	1	16	20	BH10125000010	Rotating blade pressing plate	45	12	
41	BH10231400010	Shaft sleeve?	Q235A	1	15	19	YW42023001000	Rotating blade	SKD11	12	
40	BH10232300010	Right bearing base cover plate	Q235A	1	14	18	YW65010000000	Standard spring washer GB/T93.1 Langle	65Mn	24	
39	BW30233012040	big taper sleeve SS-25B-30B-55 #120(assembly)	HT250	1	13	17	YW61104000200	hex hex column head screw GB/T11023-21 Langle		24	
38	BH10231200010	Right bearing base	QT500-7	1	12	16	-	Blade rest/shaft	assembly	1	
37	BH10231100010	Right end plate	Q235A	1	11	15	BH11234850010	Front case block	QT500-7	1	
36	BL54234845720	Screen bracket hanging plate	SPH10.0	1	10	14	YW42234800100	Fixed blade	SKD11	2	
35	BW30234800410	Rear pressing block	Q235A	1	9	13	YW68083000000	hex hex flat end screw GB/T11023-21 Langle	12.9	2	
34	YW61050800000	hex hex column head screw GB/T11023-21 Langle		2	8	12	YW61082500100	hex hex column head screw GB/T11023-21 Langle		10	
33	YW65050000000	Standard spring washer GB/T93.1	65Mn	2	7	11	YW65008001000	Standard spring washer GB/T93.1 Langle	65Mn	18	
32	BL54230002420	Anti-dust cover	SPCC1.5	1	6	10	YW66123200100	Large washer A plate GB/T93.20-20 Langle	14.0HV	2	
31	YR80756000000	Oil seal 75x60x8	rubber	3	5	9	YW69001600000	External retaining ring GB/T93.1 Langle	65Mn	2	
30	YW11222100600	Spherical roller bearing 22211C	GCr15	2	4	8	YW09301600000	Shaft pin	45	2	
29	BL54230003120	Bearing washer	SPCC2.0	1	3	7	YW09003010500	Star screw	45	2	
28	YW09521600000	Retaining washer for nut and nut	Q215	1	2	6	BL54300003920	Chain base	SPH8.0	2	
27	YW65215000000	Small nut and bolt GB/T810 M5x15	45	1	1	5	YW09001200500	Star nut M2	ZG230-45C	2	
26	BH10232700010	Left bearing base cover plate	QT500-7	1	1	4	BW30234800110	Front pressing block	Q235A	1	

标记	更改前	更改后	更改人	日期	审核	日期	标题	图号	比例	数量	备注
							SG-2348				
							粉碎室总成				
							SHINI 信易电热机械股份有限公司 Shini Plastics Technologies, Inc.		表面要求	物料号	



35	YR9000600400	Black rubber sealing strip (Dia: 6mm)		1.5m	17	YW01101000000	Spring Mill	65Mn	0.04m	
34	-	Cutting case cover plate 3	SPCC2.0	1	16	YW30003600100	Swi handle SG-36		1	
33	YW68005500000	Interlex flat end lid screw Ø17M6.5-Longpin		2	15	-	Feed box right cover plate	SPCC1.5&3.0	1	
32	BH10300800040	Feed box rotating shaft	Q235A	2	borrow	14	-	Feed box side plate	SECC2.0	2
31	-	Cutting chamber cover plate 2	SPCC2.0	1	13	-	Fender plate assembly	assembly	1	
30	-	Cutting chamber cover plate 1	SPCC2.0	1	borrow	12	-	Feed box left cover plate	SPCC1.5	1
29	BL54234.805920	Cutting chamber	SPCC3.0	1	11	-	Rear cover plate	SPCC1.5	1	
28	-	Feed port final plate without hole	SUS201	1	borrow	10	-	Rear foleded plate	SECC2.0	1
27	YW66081900000	Flat washer 8x19x2.0 Longzinc	14.0HV	2	9	-	Rear middle foleded plate	SECC2.0	1	
26	YW61082501200	Interlex column head screw M6.5	12.9	2	8	-	Rear upper foleded plate	SECC2.0	1	
25	-	Feed port final plate with hole	SUS201	1	borrow	7	-	Nut plate	SPH10.0	1
24	BW20012000140	Handle		1	6	-	Top vertical plate	SECC2.0	1	
23	YW61082000000	Interlex column head screw Ø17M6.5-Longpin		2	5	-	Top middle foleded plate	SECC2.0	1	
22	YW67481900000	Interlex column head screw Ø17M6.5-Longpin		84	4	-	Top cover plate	SPCC1.5	1	
21	-	External cover final plate	SPCC1.5	1	3	-	Top foleded plate	SECC2.0	1	
20	-	Front foleded plate	SECC2.0	1	2	-	Hopper port	SECC3.0	1	
19	BH13300700010	Switch final block	6061	1	borrow	1	-	Feed port	SPCC2.0	1
18	-	Square pipe bracket	welding parts	1						

标记	更改前	更改后	更改人	日期	制图	版号	标题	图号	比例	数量	备注
							SG-2348				
							进料箱总成				
							SHINI 信易电热机械股份有限公司 Shini Plastics Technologies, Inc.				
								表面要求			
							物料号				

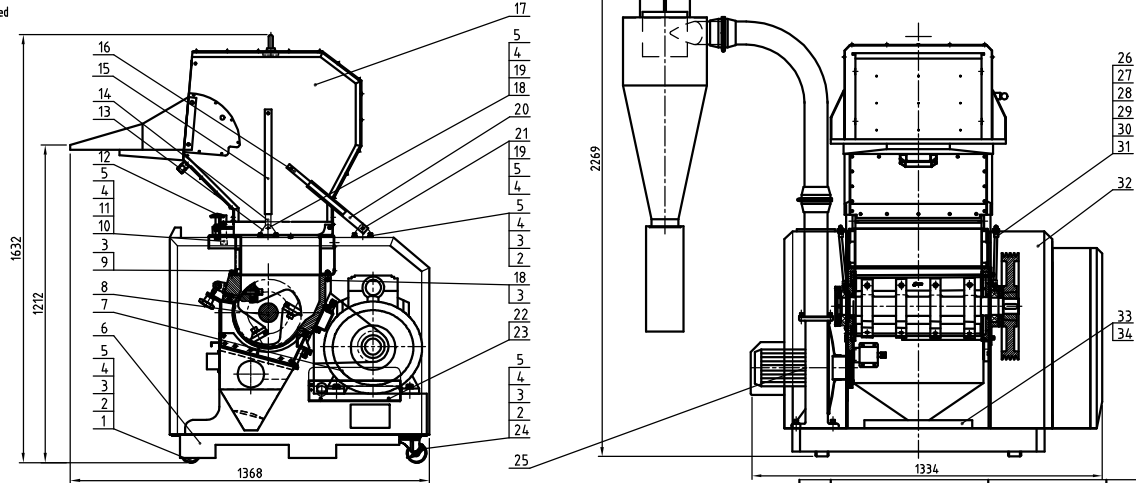


25	-	Discharge pipe fixed flange	SPH6.0	2		13	YW61082501200	Inner hex column head screw M8X25	12.9	8	
24	YW64000800100	Hex nut M8 anti-loose		4		12	-	Storage collective box	SUS201(1.5)	1	
23	YW02000700000	Pipe clamp 7"	SUS202	1		11	YW61051000200	Hex recessed pan head screw M5X20	4.8	4	
22	BP8232190014L	Filter cloth bag 1	Nylon Mesh 50μ mesh	1		10	-	Helical switch assembly		1	
21	-	Collective cloth bag bracket	Q235A	1		9	YW62052500000	Hex recessed pan head screw M5X25	4.8	3	
20	-	Cyclone separator	assembly	1		8	-	Pressing plate	SPCC2.0	1	
19	BL54300007920	Discharge elbow	Welding parts	1		7	YR10002300000	Discharge port fastener	allica-pl	1	
18	YW07000400000	Stainless steel pipe clamp 4"		2		6	-	Backing plate	SPCC3.0	1	
17	BP8218180004L	Filter cloth bag 2	Filter cloth	1		5	-	Blower suction port pipe	SPCC1.5	1	
16	-	Discharge pipe	Welding parts	1		4	BM30055000250	Conveying blower 0.55KW		1	
15	YW66081900000	Flat washer 8x19x2.0 Longzine	14.0HV	12		3	YW66103200000	Large washer A grade 8*19*2.0*0.25mm	14.0HV	4	
14	YW65008000100	Spring washer 8	65Mn	4		2	YW65010000000	Spring washer 10	65Mn	4	
						1	YW61104000200	Inner hex column head screw M10X40	12.9	4	

制图				版号		标题		图号		比例		数量	
设计				核准		SG-234B				1:1		1	
校对				审核		自动送料总成				材料			
标记				日期		SHINI		信昌电热机械股份有限公司		表面要求			
更改前				更改后		Shini Plastics Technologies, Inc.		物料号					

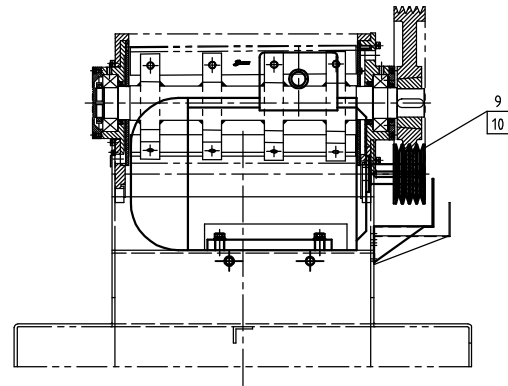
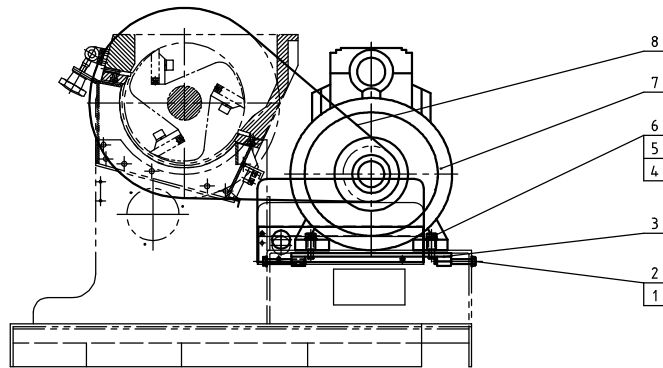
Ver. No.	Motor Power kW/50/60Hz	Main Shaft Speed (r.p.m)	Cutter Material	Fixed Cutter Qty.	Rotating Cutter Qty.	Cutting Chamber Size (mm)	Cutting Chamber Size (mm)	Max. cutting ability (kg/hr)	Standard weight(kg)
Ver.F	11/12.6	4.15	SKD11	2	3	300×4.80	185	90~95	700

Note: 1) Maximum cutting ability depends on the screen diameter, material size and material type;
 2) During cutting, the noise level varies depending on different materials and motor configuration;
 3) SKD 11 is JIS standard;
 4) To avoid plastic sticking, all materials to be granulated must be processed at normal temperature;
 5) Power supply: 3Ø.400VAC,50Hz



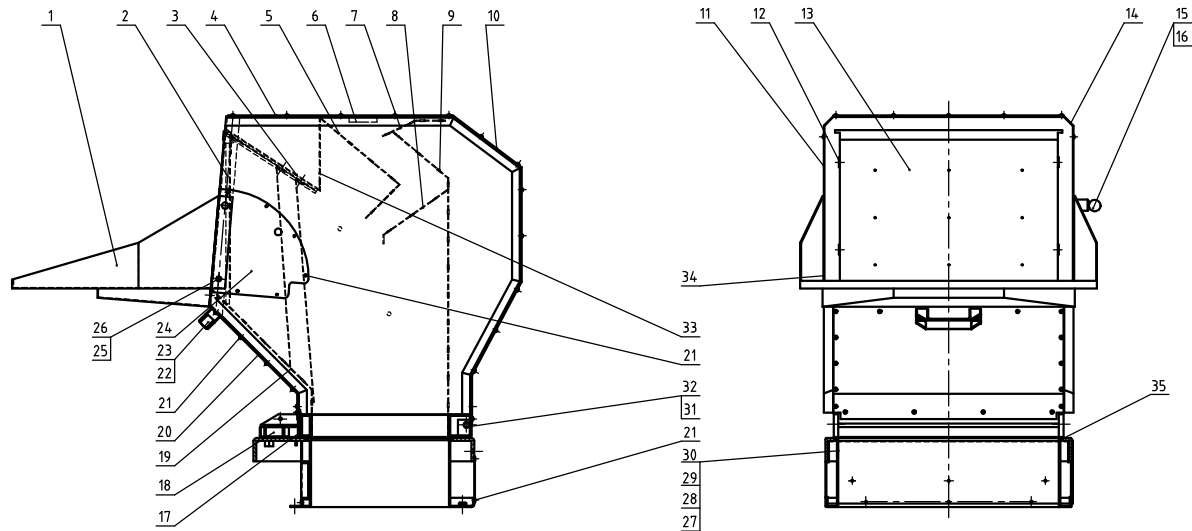
34	YR40083500000	Star handle Ø M8×35	Assembly	2		17	-	Feed box assembly	Assembly	1
33	BH11304.802210	Adjusting blade rest	Assembly	1	Accessories	16	BH10300500110	Support pipe 1	Q235A	1
32	-	Shield	Assembly	1		15	BH103004.00110	Air spring sleeve	Q235A	1
31	YW04.010100000	Oil nozzle M16-1	H62	2		14	YW01090000000	Air pressure spring 900N		1
30	BH12000301010	3" copper nut	H62	4		13	-	Air spring support base	SPH4.0	2
29	BH10360100010	Oil pipe nut	H62	2		12	BH11300200010	Feed box star assembly	Assembly	2
28	BH10361100010	3/8 copper pipe ext. connector	H62	2		11	YW61082000200	Inner hex column head screw M8	12.9	1
27	BH12361000010	3/8 copper pipe inner connector	H62	2		10	-	link	SPH6.0	1
26	-	Oil filling pipe	TP2	2		9	YW61081600000	Inner hex column head screw M6	12.9	3
25	-	Auto conveying assembly	Assembly	1		8	-	Cutting chamber assembly	Assembly	1
24	YW03000300900	Side movable castor 3"		2		7	-	Main transmission gear	Assembly	1
23	YW62061000000	Large cross recessed flat head screw M6		3		6	-	Rack assembly	Welding parts	1
22	-	Safety screen plate	screen plate 15	1		5	YW64.000800100	Hex nut M8 anti-loose	5	25
21	YW61085000000	Inner hex column head screw M8	12.9	3		4	YW66081900000	Flat washer A grade Ø19x18x3Largo	14.0HV	35
20	BH104.36001810	Support pipe 2	Q235A	1		3	YW65008000100	Spring washer Ø	65Mn	26
19	YW64.080600000	Hex. nut GB/T6170 M8-Longzine		4		2	YW61082500100	Inner hex column head screw M6	12.9	20
18	YW61083500000	Inner hex column head screw M6	12.9	4		1	YW03000300500	Feed roller?		2

制图	版号	标题	图号	比例	数量
设计	核准	SG-3048	SG-3048-ALL	1:1	1
校对	核准	总成		材质	
标记	更改前	更改后	更改人	日期	审核
			SHINI 信易电热机械股份有限公司 Shini Plastics Technologies, Inc.		
			表面要求		
			物料号		



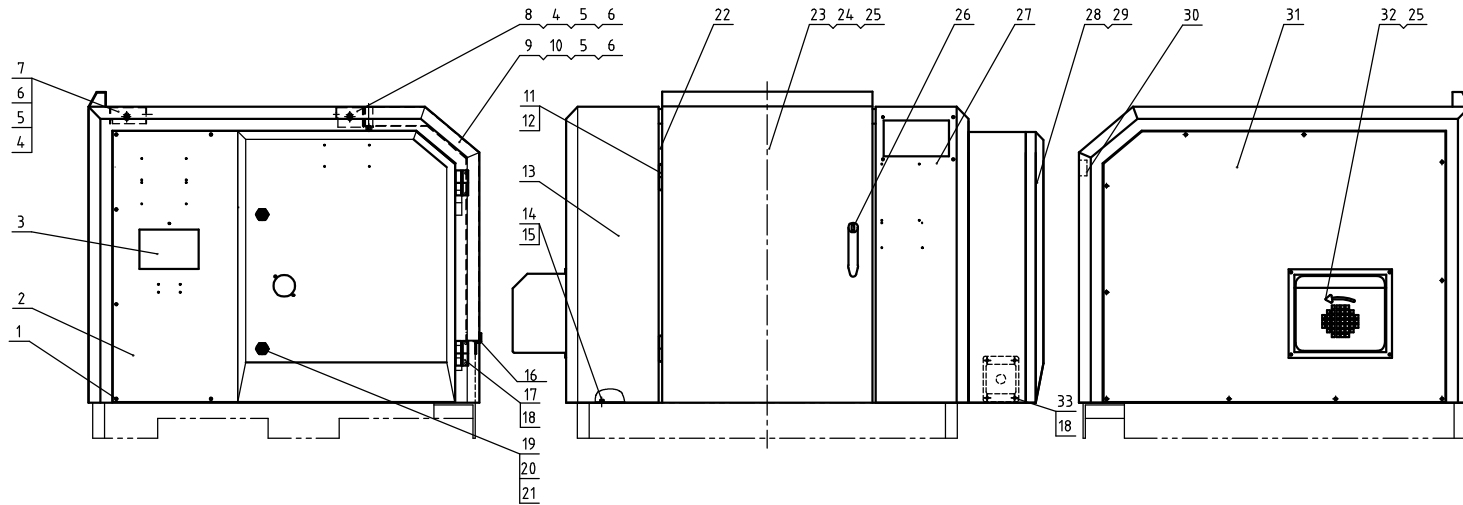
10	BW30003005320	Small taper sleeve SG-30-2012-42 HT250 (casted)	HT250	1		
9	BW30002305320	Small belt pulley SG-23/30-SPAIN-04-102 HT250 (casted)	HT250	1		
8	YR00170040000	V-belt (XPA-1700LP)		4		
7	YM10201100400	Belt W20 11KW-16LL-4P 83T E3 400/690/460V		1		
6	YW65012000000	Standard spring washer GB/T193 Q-L-Longzine		4		
5	YW66122400000	Flat washer A grade GB/T911 Q235-A-25-L-Longzine		4		
4	YW60124500000	Hex bolt GB/T5783 M2x45-8.8-Longzine		4		
3	BH10306500210	Hex adjustable plate	Q235A	2		
2	YW66103200000	Large washer A grade GB/T96 100M5x30x2.5-L-Longzine		4		
1	YW60108000000	Hex bolt GB/T5783 M10x80-8.8-Longzine		2		
	序号	代号	名称	材质	数量	备注

					制图	版号	标题	图号	比例	数量	
					设计	核	SG-3048		1:1	4	
					校对	准	主传动装置			材质	
标记	更改前	更改后	更改人	日期	审核	日期	SHINI 信昂电热机械股份有限公司 Shini Plastics Technologies, Inc.		表面要求	物料号	



35	YR9000600400	Back rubber sealing strip (15x 6mm)		1.63m	17	-	Square pipe bracket	Welding parts	1	
34	-	Feed port fixed plate without hole	SUS201	1	16	YW01101000000	Spring	65Mn	0.04m	
33	-	Top vertical plate	SECC2.0	1	15	YW30003600100	Shut handle SG-36		1	
32	YW68005500000	Rear box lid end lock screw (M7*11*6) Length		2	14	-	Feed box right cover plate	SPCC1.58.3.0	1	
31	BH10300800040	Feed barrel sliding shaft	Q235A	2	13	-	Fender plate assembly	assembly	1	
30	-	Lifting chamber cover plate 2	SPCC2.0	1	12	-	Feed box side plate	SECC2.0	2	
29	-	Lifting chamber cover plate 2	SPCC2.0	1	11	-	Feed box left cover plate	SPCC1.5	1	
28	-	Lifting chamber cover plate 1	SPCC2.0	1	10	-	Rear cover plate	SPCC1.5	1	
27	BL54304809920	Lifting chamber	SPCC3.0	1	9	-	Rear foleded plate	SECC2.0	1	
26	YW66081900000	Flat washer 6x19x2.0 Lengzine	14.0HV	2	8	-	Rear middle foleded plate	SECC2.0	1	
25	YW61082501200	Inner box column head screw PH6.5	12.9	2	7	-	Rear upper foleded plate	SECC2.0	1	
24	-	Feed port fixed plate with hole	SUS201	1	6	-	Nut plate	SPH10.0	1	
23	BW20012000140	Alu square handle (100 PH) hand block		1	5	-	Top middle foleded plate	SECC2.0	1	
22	YW61082000000	Rear box column head screw PH6.5		2	4	-	Top cover plate	SPCC1.5	1	
21	YW67481900000	Accessories end nut lock (M7*11*6) Length		83	3	-	Top foleded plate	SECC2.0	1	
20	-	External cover fixed plate	SPCC1.5	1	2	-	Hopper port	SECC3.0	1	
19	-	Front foleded plate	SECC2.0	1	1	-	Feed port	SPCC2.0	1	
18	BH13300700010	Small fixed block	6061	1						

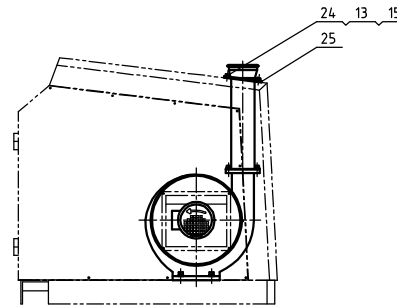
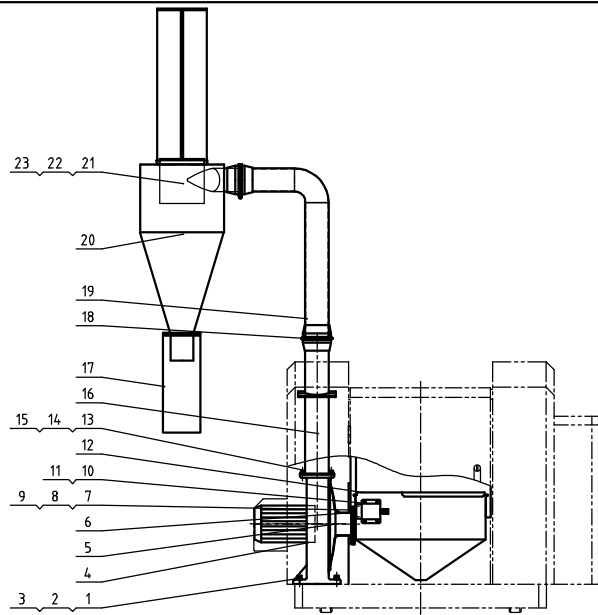
制图	版号	标题	图号	比例	数量
		标题 SG-3048	图号		
设计	核	进料箱总成		表面要求	
校对	准	信昌电热机械股份有限公司 Shini Plastics Technologies, Inc.		物料号	
标记	日期				
更改前	更改后	更改人	日期	审核	日期



20	YW0004.0600000	Door lock long fender	Q235A	2	
19	YW00000000100	Long door lock	Alum. alloy	2	
18	YW61051000200	Cross recessed pan head screw M5-D	4.8	20	
17	YW06203100200	Large chain (L203-1 length)		4	
16	-	Motor cover plate fender	SPCC2.0	1	
15	YW66061300000	Flat washer 4	14.0HV	20	
14	YW61061600200	Inner hex. column head screw M5x6	12.9	20	
13	-	Left shell	SPCC2.0	1	
12	YW62051000100	Large cross recessed flat head screw M5-N		12	
11	YW06253200000	Hinge CL253-2(Sheng jiu)		2	
10	YW61086500000	Inner hex. column head screw M5x5	12.9	2	
9	-	Motor cover plate	SPCC2.0	1	
8	-	Rear upper cover plate	SPCC2.0	1	
7	-	Front upper cover plate	SPCC2.0	1	
6	YW66081900000	Flat washer 8x19x2.0 Longzine	14.0HV	6	
5	YW65008000100	Spring washer 8	65Mn	6	
4	YW61082501200	Inner hex. column head screw M5x5	12.9	4	
3	BR90367504.310	Sight plate	Acrylic	1	borrow
2	-	Control box bottom plate	SPCC2.0	1	
1	YW62052500000	Cross recessed pan head screw M5x5	4.8	16	

33	BL45000502120	Wire clamp fixed plate M25 SG-S-01	SPCC2.0	1	
32	-	Blower motor cover shell	SPCC2.0	1	
31	-	Left shell cover plate	SPCC2.0	1	
30	YR4091404.0000	Plastic ladder handle 95x40		1	
29	-	Wiring plate	SECC1.5	1	
28	-	Control box door plank	SPCC2.0	1	
27	-	External right shell	SPCC2.0	1	
26	YW00004500000	Door lock M-45-B	Alum. alloy	1	
25	YW67481900000	Cross recessed pan head tapping screw ST4.8x19		16	
24	-	Screen plate 15		1	
23	-	Front door	SPCC2.0	1	
22	YR10011000100	3 compound sealant strips 011		7.1m	
21	YW0004.0600200	Door lock key CF-406-H		2	

制图	版号	标题	SG-3048	图号	比例	数量
设计	核准	护罩部件			表面要求	材质
校对	日期	SHINI 信易电热机械股份有限公司			物料号	
审核	日期	Shini Plastics Technologies, Inc.				

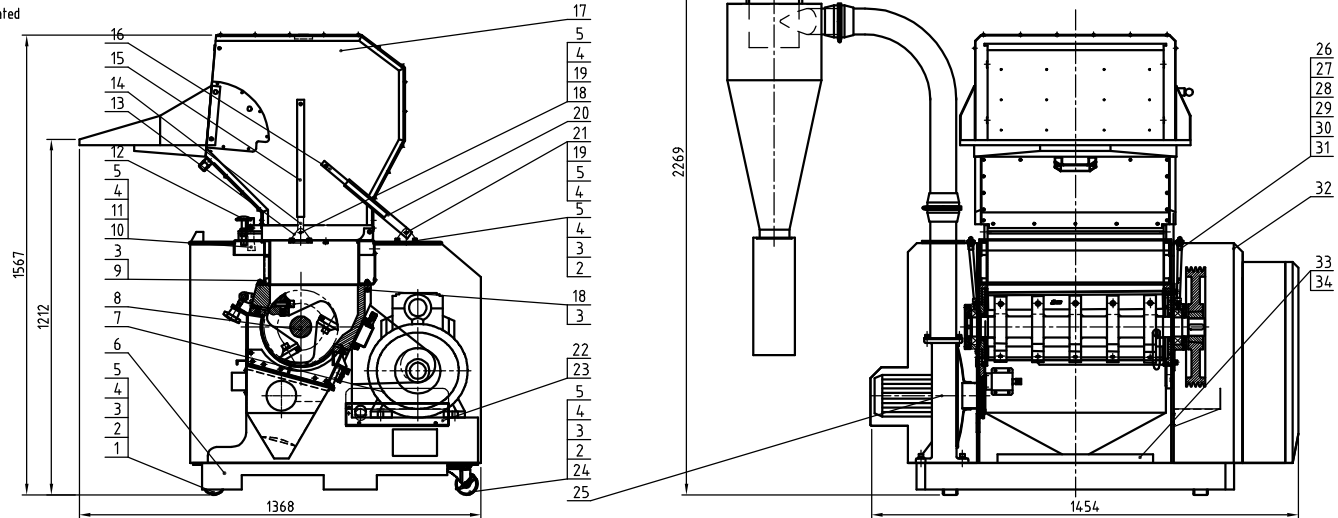


25	-	Discharge pipe fixed flange	SPH6.0	2		13	YW61082501200	Hex hex column head screw M8X25	12.9	8	
24	YW64000800100	Hex nut M8 anti-loose		4		12	-	Storage collective box	SUS201(15)	1	
23	YW020007000000	Pipe clamp 7"	SUS202	1		11	YW61051000200	Hex recessed pan head screw res-x10	4.8	4	
22	BP8232190014.4	Filter cloth bag 1	Nylon Mesh	1	borrow	10	-	Helical switch assembly	4.8	1	
21	-	Collective cloth bag bracket	Q235A	1	borrow	9	YW62052500000	Hex recessed pan head screw res-x25	4.8	3	
20	-	Cyclone separator	assembly	1	borrow	8	-	Pressing plate	SPCC2.0	1	
19	BL54-300007920	Discharge elbow	Welding parts	1		7	YR10002300000	Discharge port fastener	silica gel	1	
18	YW070004000000	Stainless steel pipe clamp 4"		2		6	-	Backing plate	SPH8.0	1	
17	BP8218180004.4	Filter cloth bag 2	Filter cloth	1	borrow	5	-	Blower suction port pipe	SPCC15	1	
16	-	Discharge pipe	Welding parts	1		4	BM30055000250	Conveying blower 0.55KW		1	
15	YW660819000000	Flat washer 8x19x2.0 Long zinc	14.0HV	12		3	YW66103200000	Large washer 4 grade 80% 80% 80% 80%	14.0HV	4	
14	YW65008000100	Spring washer 8	65Mn	4		2	YW65010000000	Spring washer II	65Mn	4	
						1	YW61104000200	Hex hex column head screw M10X4.0	12.9	4	

标记	更改前	更改后	更改人	日期	制图	原号	标题	图号	比例	数量	备注
					设计		SG-304.8				
					校对		自动送料总成				
					审核		SHINI 信昌电热机械股份有限公司 Shini Plastics Technologies, Inc.		表面要求		
					日期				物料号		

Ver. No.	Motor Power (kW, 50/60Hz)	Main Shaft Speed (r.p.m)	Cutter Material	Fixed Cutter Qty.	Rotating Cutter Qty.	Cutting Chamber Size (mm)	Cutting Chamber Size (mm)	Max. cutting ability (kg/hr)	Standard weight(kg)
Ver.F	15/17.3	4.15	SKD11	2	3	300x600	220	90-95	780

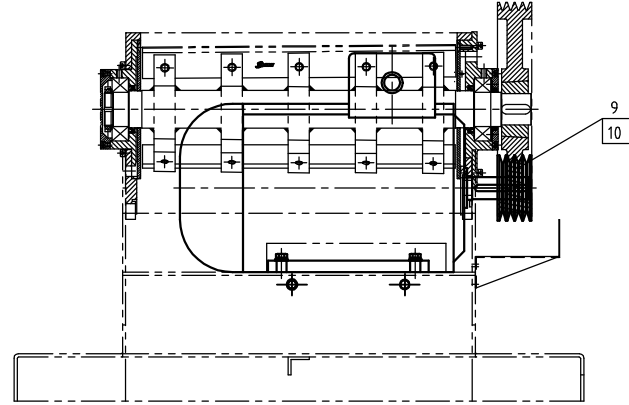
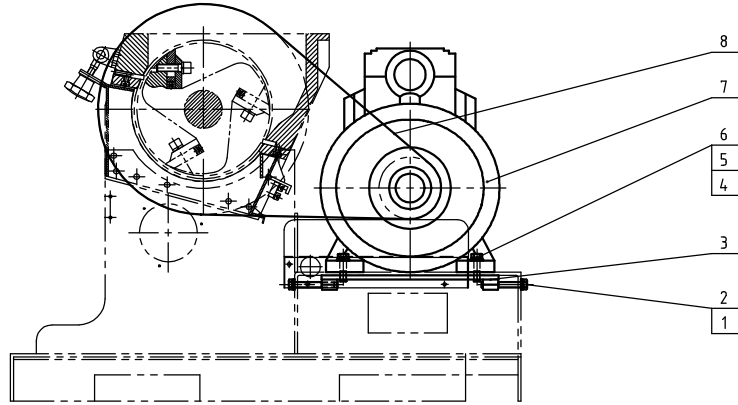
Note: 1) Maximum cutting ability depends on the screen diameter, material size and material type;
 2) During cutting, the noise level varies depending on different materials and motor configuration;
 3) SKD 11 is JIS standard ;
 4) To avoid plastic sticking, all materials to be granulated must be processed at normal temperature;
 5) Power supply: 3Φ, 400VAC, 50Hz



34	YR4.0083500000	Star handle B M8x35	Assembly	2	17	-	Feed box assembly	Assembly	1
33	BH10300100110	Adjusting blade rest	Assembly	1	16	BH10300500110	Support pipe 1	Q235A	1
	-	Shield	Assembly	1	15	BH103004.00110	Air spring sleeve	Q235A	1
31	YW04.010100000	Oil nozzle M10x1	H62	2	14	YW01090000000	Air pressure spring 900N		1
30	BH12000301010	3" copper nut	H62	4	13	-	Air spring support base	SPH4.0	2
29	BH10360100010	Oil pipe nut	H62	2	12	BH11300200010	Feed box star assembly	Assembly	2
28	BH10361100010	3/8 copper pipe ext. connector	H62	2	11	YW61082000200	Inner hex column head screw M8x1		1
27	BH12361000010	3/8 copper pipe inner connector	H62	2	10	-	Washer	SPH6.0	1
26	-	Oil filling pipe	TP2	2	9	YW61081600000	Inner hex column head screw M6x16	12.9	3
25	-	Auto conveying assembly	Assembly	1	8	-	Cutting chamber assembly	Assembly	1
24	YW03000300900	Side movable castor 3"		2	7	-	Main transmission gear	Assembly	1
23	YW62061000000	Large cross recessed flat head screw M6x16		3	6	-	Rack assembly	Welding parts	1
22	-	Safety screen plate	screen plate 15	1	5	YW64.000800100	Non-metal insert hex lock nut GB/T1931.1M6	5	25
21	YW61085000000	Inner hex column head screw GB/T171.1 M8-5.8-12.9-Longzine		3	4	YW66081900000	Flat washer A grade GB/T171.1 M8-20-Longzine	14.0HV	35
20	BH104.36001810	Support pipe 2	Q235A	1	3	YW65008000100	Standard spring washer GB/T93-Longzine	65Mn	26
19	YW64.080600000	Hex. nut GB/T16170 M8-Longzine		4	2	YW61082500100	Inner hex column head screw GB/T171.1 M6-20-Longzine		20
18	YW61083500000	Inner hex column head screw GB/T171.1 M8-5.8-12.9-Longzine		4	1	YW03000300500	Fixed castor 3"		2

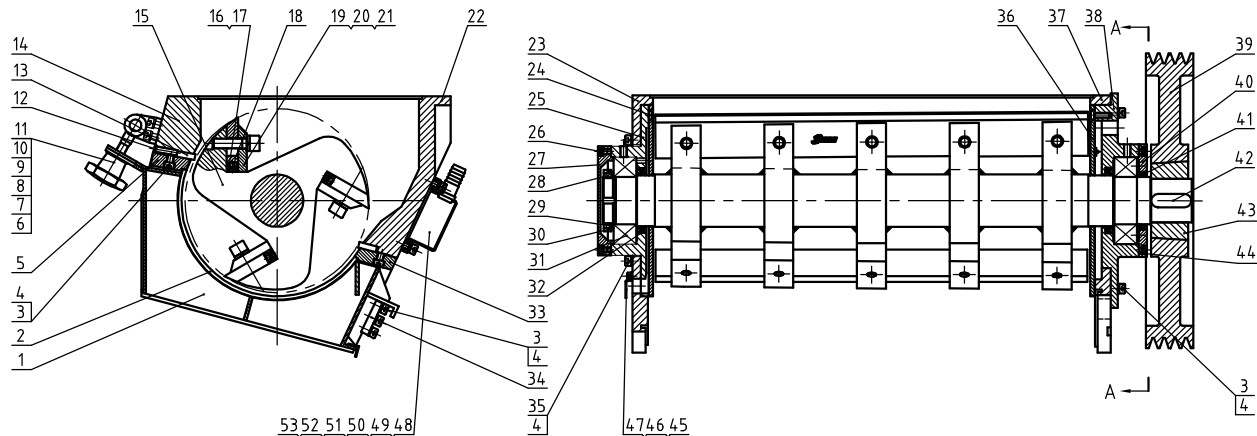
制图	版号	标题	图号	比例	数量
设计	核准	SG-3060		1:1	1
校对	核准	总成		表面要求	物料号
标记	更改前	更改后	更改人	日期	审核





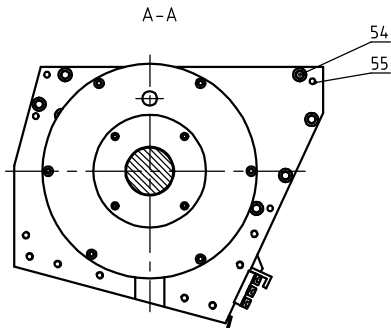
10	BW30003005320	Small taper sleeve SG-30-2012-42 HT250 (assembly)	HT250	1	
9	BW30002305320	Small ball pulley SG-2930-SPATH-04-2012 HT250 (assembly)	HT250	1	
8	YR0017004.00000	V-belt (XPA-1700LP)		4	
7	YM102015004.00	Motor W20 11kW-16N-4P B3T IE3 440/690/460V		1	
6	YW65012000000	Standard spring washer GB/T93 T2-Longzine	65Mn	4	
5	YW661224.000000	Flat washer A grade GB/T911 12/135-24-25-L-Longzine	14.0HV	4	
4	YW601245000000	Hex ball GB/T5783 M12-4.5-8.8-Longzine		4	
3	BH10306500210	Motor adjustable plate	Q235A	2	
2	YW661032000000	Large washer A grade GB/T96 10/10.5x30x2.5-L-Longzine		4	
1	YW601080000000	Hex ball GB/T5783 M10-8.8-Longzine		2	
序号	代号	名称	材质	数量	备注

				制图	版号	标题	图号	比例	数量
				设计	核	SG-3060		1:1	4
				校对	准	主传动装置			
				审核	日期		信昂電熱機械股份有限公司 Shini Plastics Technologies, Inc.	表面要求	
标记	更改前	更改后	更改人	日期	日期			物料号	



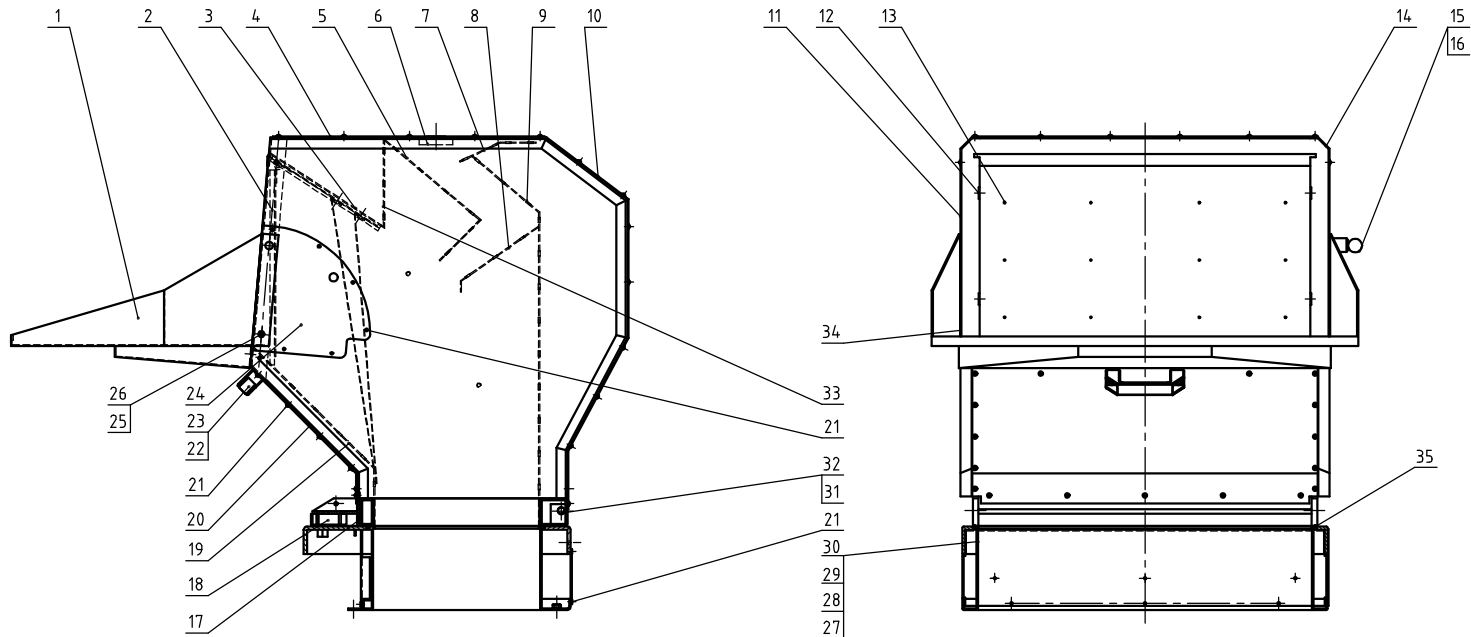
5352 51 50 49 48

47 46 45



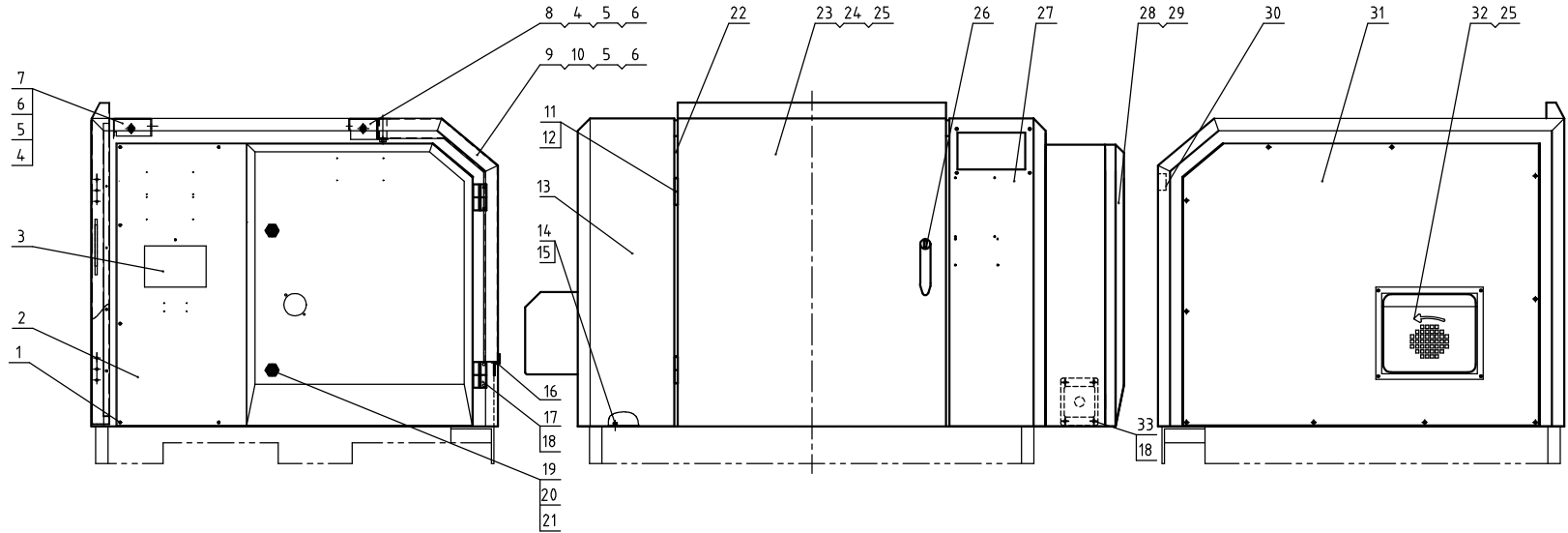
55	YW69105000000	Elastic cylindrical pin GB/T 8791.1 D=50	65Mn	8		27	BW30301300010	Left bearing base cover plate	QT500-7	1	
54	YW61123500000	Inner hex column head screw GB/T 10163-23-Longine		14		26	YW61062001200	Inner hex column head screw GB/T 10163-23-Longine		4	
53	-	Water case pressing plate	SPHG.0			25	BW30301200010	Left bearing base	QT500-7	1	
52	YW61062500100	Inner hex column head screw GB/T 10163-25-Longine		18		24	YW61081600000	Support and retaining ring GB/T 10163-24-Longine		6	
51	YW65006000100	Standard spring washer GB/T 93 6-Longine	65Mn	18		23	BH10306501110	Left end plate	Q235A	1	
50	YW66061300000	Flat washer A grade GB/T 9186-04-Longine	14.OHV	36		22	BW30306800310	Rear case block	QT500-7	1	
49	-	Water tank	welding parts	1		21	BH10306000910	Rotating blade pressing plate	Q235A	3	
48	-	Water tank washer	rubber	1		20	YW65014200000	Standard spring washer GB/T 93 14-Longine	65Mn	15	
47	YW61051000000	Inner hex column head screw GB/T 10163-10-5-Longine		2		19	YW61145000000	Inner hex column head screw GB/T 10163-10-5-Longine		15	
46	YW65050000000	Standard spring washer GB/T 93 5	65Mn	2		18	BW42306000710	Rotating blade	SKD11	3	
45	BL54300002620	Anti-dust cover	SPCC1.5	1		17	YW64000600300	Hex nut GB/T 6170 M6-Longine	8	6	
44	YW61061601200	Inner hex column head screw GB/T 10163-16-2-5-Longine		4		16	YW60062000100	Hex bolt GB/T 5781 M6-20-4.8-Longine		6	
43	BW30233012040	Big taper sleeve SG-23-302-45 HT254(standard)	HT-250	1		15	-	Blade rest shaft	welding parts	1	
42	BH10301300310	Flat key 18x11x55	45	1		14	BW30306500010	Front case block	QT500-7	1	
41	YR80806500000	Oil seal 80x65x8	rubber	1		13	YW42325800000	Fixed blade	SKD11	2	
40	BH10003120210	Right bearing base cover plate	Q235A	1		12	YW68083000000	Inner hex flat end screw GB/T 17708-34-Longine	12.9	6	
39	BW30002305220	Big taper sleeve SG-23-300-45 HT254(standard)	HT250	1		11	YW66123200100	Large washer A grade GB/T 9186 1232-0-Longine	14.OHV	2	
38	BW30300202110	Right bearing base	QT500-7	1		10	YW69001600000	External retaining ring GB/T 10163-10-42-2039	65Mn	2	
37	BH10306101210	Right end plate	Q235A	1		9	YW09301400000	Shaft pin	45	2	
36	BH11300820010	Feeder plate	65Mn	2		8	YW09003010500	Star screw	45	2	
35	YW61082000200	Inner hex column head screw GB/T 10163-20-2-5-Longine		4		7	BL54300003920	Chain base	SPH8.0	1	
34	BL54306004720	Screen bracket hanging plate	SPH10.0	1		6	YW09001200500	Star nut M12	ZG230-450	2	
33	BW30306901310	Rear pressing block	Q235A	1		5	BW30306101310	Front pressing block	Q235A	1	
32	YR80971000000	Oil seal 90x70x10	rubber	2		4	YW65008000100	Standard spring washer GB/T 93 4-Longine	65Mn	4.0	
31	YW11222100300	Spherical roller bearings 22213	GCr15	2		3	YW61082501200	Inner hex column head screw GB/T 10163-25-Longine		36	
30	YW09640000000	Retaining washer for round nut M4	Q215	1		2	BL543060006020	Screen 8mm	45	1	
29	BL54300800020	Bearing washer	SPCC2.0	1		1	-	Screen bracket assembly	welding parts	1	
28	YW64642000000	Small round nut GB/T 6170 M6x2-45 steel	45	1							

标记	更改前	更改后	更改人	日期	审核	日期	序号	代号	名称	材质	数量	备注
					制图	版号	标题 SG-3060		图号	比例	数量	
					设计	核准	粉碎室总成			材质		
					校对		信易电热机械股份有限公司 Shini Plastics Technologies, Inc.		表面要求			
					日期				物料号			



35	YR90000600400	Black rubber sealing strip (Dia: 6mm)		1.87m	17	-	Square pipe bracket	welding parts	1	
34	-	Feed port fixed plate without hole	SUS201	1	16	YW01101000000	Spring M10	65Mn	0.04m	
33	-	Top vertical plate	SECC2.0	1	15	YW30003600100	Stainless handle SG-36		1	
	YW68005500000	Inner hex. flat end lock screw @M10x6-Largine		2	14	-	Feed box right cover plate	SPCC1.5&3.0	1	
31	BH10300800040	Feed board shaft	Q235A	2	13	-	Fender plate assembly	assembly	1	
30	-	Cutting chamber cover plate 3	SPCC2.0	1	12	-	Feed box side plate	SECC2.0	2	
29	-	Cutting chamber cover plate 2	SPCC2.0	1	11	-	Feed box left cover plate	SPCC1.5	1	
28	-	Cutting chamber cover plate 1	SPCC2.0	1	10	-	Rear cover plate	SPCC1.5	1	
27	BL54306005920	Cutting chamber	SPCC3.0	1	9	-	Rear foleded plate	SECC2.0	1	
26	YW66081900000	Flat washer 8x19x2.0 Longzine	14.0HV	2	8	-	Rear middle foleded plate	SECC2.0	1	
25	YW61082501200	Inner hex. column head screw M8x25	12.9	2	7	-	Rear upper foleded plate	SECC2.0	1	
24	-	Feed port fixed plate with hole	SUS201	1	6	-	Nut plate	SPH10.0	1	
23	BW20012000140	Alu square handle L 120 (M8 hole) black		1	5	-	Top middle foleded plate	SECC2.0	1	
22	YW61082000000	Inner hex. column head screw @M8x20-Largine		2	4	-	Top cover plate	SPCC1.5	1	
21	YW67481900000	Coaxial screw lock fastening screw @M8x20-Largine		86	3	-	Top foleded plate	SECC2.0	1	
20	-	External cover front plate	SPCC1.5	1	2	-	Hopper port	SECC3.0	1	
19	-	Front foleded plate	SECC2.0	1	1	-	Feed port	SPCC2.0	1	
18	BH13300700010	Switch fixed block	6061	1						

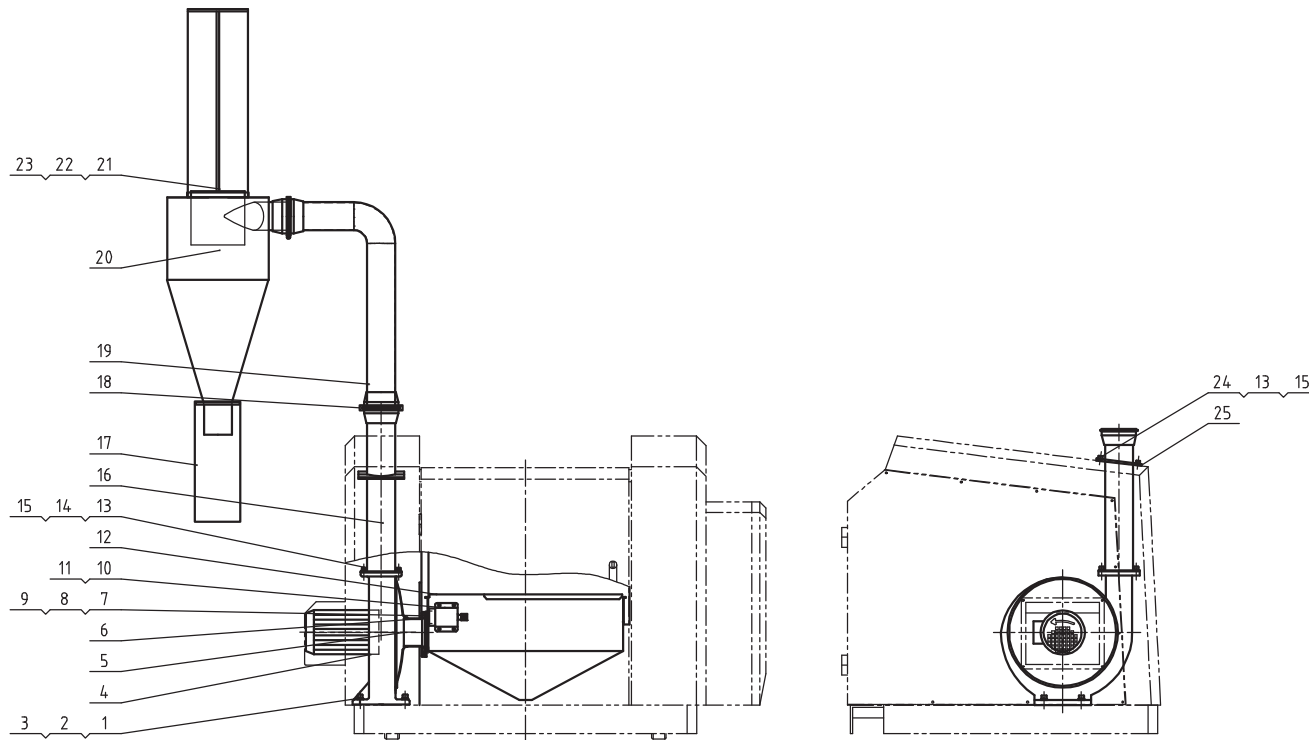
标记	更改前	更改后	更改人	日期	审核	日期	标题	图号	比例	数量	备注
							SG-3060				
							进料箱总成				
							SHINI 信易电热机械股份有限公司 Shini Plastics Technologies, Inc.				
									表面要求		
									物料号		



33	BL02010000020	Wire clamp fixed plate M25 SG-5-41	SPCC2.0	1	
32	-	Blower motor cover shell	SPCC2.0	1	
31	-	Left shell cover plate	SPCC2.0	1	
30	YR4.0914.04.0000	Plastic ladder handle 9540		1	
29	-	Wiring plate	SECC15	1	
28	-	Control box door plank	SPCC2.0	1	
27	-	External right shell	SPCC2.0	1	
26	YW00004500000	Door lock M-45-B	Alum. alloy	1	
25	YW67481900000	Cross recessed pan head screw S14.8x19		11	
24	-	Door screen plate	screen plate 15	1	
23	-	Front door	SPCC2.0	1	
22	YR10011000100	3 compound sealant strip 611		7.1m	
21	YW0004.0600200	Door lock key CF-406-H		2	

20	YW0004.0600000	Door lock long fender	Q235A	2	
19	YW00000000100	Long door lock	Alum. alloy	2	
18	YW61051000200	Cross recessed pan head screw M5x18	4.8	20	
17	YW06203100200	Large chain CL203-1 (right)		4	
16	-	Motor cover plate fender	SPCC2.0	1	
15	YW66061300000	Flat washer 6	14.0HV	20	
14	YW61061600200	Inner hex. column head screw M6x16	12.9	20	
13	-	Left shell	SPCC2.0	1	
12	YW62051000100	Large cross recessed flat head screw M5x12		12	
11	YW06253200000	Hinge CL253-2 (Shang jiu)		2	
10	YW61086500000	Inner hex. column head screw M8x6	12.9	2	
9	-	Motor cover plate	SPCC2.0	1	
8	-	Rear upper cover plate	SPCC2.0	1	
7	-	Front upper cover plate	SPCC2.0	1	
6	YW66081900000	Flat washer 8x19x2.0 Longzine	14.0HV	6	
5	YW65008000100	Spring washer 8	65Mn	6	
4	YW61082501200	Inner hex. column head screw M8x12	12.9	4	
3	BR90367504310	Sight plate	Acrylic	1	
2	-	Control box bottom plate	SPCC2.0	1	
1	YW62052500000	Cross recessed pan head screw M5x5	4.8	16	

制图	版号	标题	图号	比例	数量
设计	核准	SG-3060		1:1	
校对		护罩部件		材质	
审核	日期	信易电热机械股份有限公司 Shini Plastics Technologies, Inc.		表面要求	
标记	更改前			更改后	更改人



25	-	Discharge pipe fixed flange	SPH6.0	2	13	YW61082501200	Inner hex column head screw M8X25	12.9	8	
24	YW64.000800100	Hex nut M8 anti-loose		4	12	-	Storage collective box	SUS201(1.5)	1	
23	YW02000700000	Pipe clamp T	SUS202	1	11	YW61051000200	Crss recessed pan head screw M5x10	4.8	4	
22	BP8232190014.4	Filter cloth bag 1	Nylon Mesh	1	9	YW62052500000	Crss recessed pan head screw M5x25	4.8	3	
21	-	Collective cloth bag bracket	Q235A	1	8	-	Pressing plate	SPCC2.0	1	
20	-	Cyclone separator	assembly	1	7	YR10002300000	Discharge port fastener	silica gel	1	
19	BL54.300007920	Discharge elbow	Welding parts	1	6	-	Backing plate	SPH8.0	1	
18	YW070004.00000	Stainless steel pipe clamp 4"		2	5	-	Blower suction port pipe	SPCC1.5	1	
17	BP8218180004.4	Filter cloth bag 2	Filter cloth	1	4	BM30055000250	Conveying blower 0.55KW		1	
16	-	Discharge pipe	Welding parts	1	3	YW66103200000	Large washer A grade 80% 80% 80% 80% 80%	14.0HV	4	
15	YW66081900000	Flat washer 8x19x2.0 Longzine	14.0HV	12	2	YW65010000000	Spring washer 10	65Mn	4	
14	YW65008000100	Spring washer 8	65Mn	4	1	YW61104.000200	Inner hex column head screw M10X4.0	12.9	4	

制图	版号	标题	图号	比例	数量	备注
设计	核	SG-3060		1:1	8	
校对	准	自动送料总成				
审核	日期	 信易電熱機械股份有限公司 Shini Plastics Technologies, Inc.		表面要求	物料号	
标记	更改前			更改后	更改人	日期