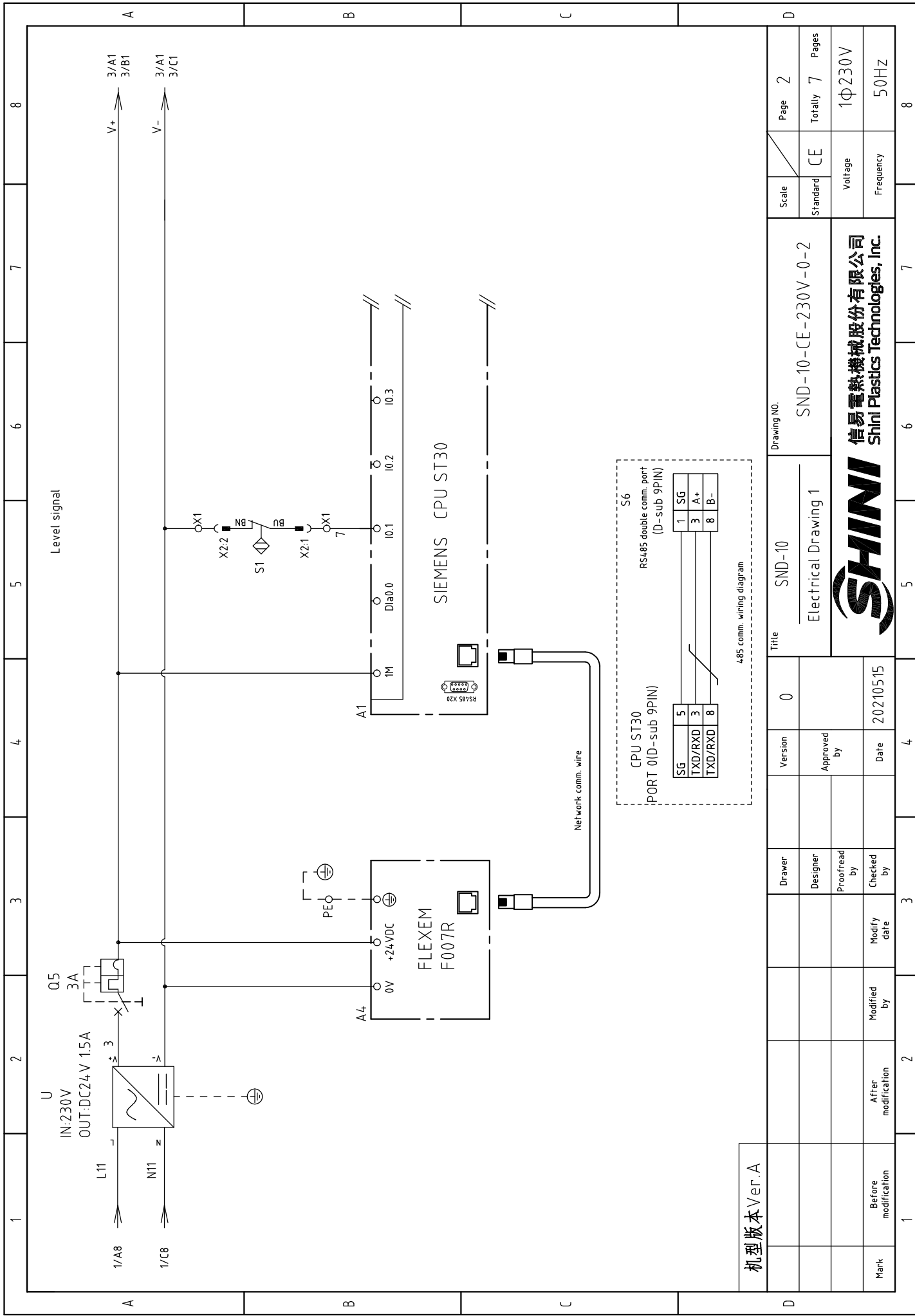


D	Scale	CE	Page	1
	Standard	CE	Totally	7
D	Standard	CE	Voltage	1 ϕ 230V
	Standard	CE	Frequency	50Hz
Drawing No.		SND-10-CE-230V-0-1		
Title		SND-10 Main Circuit Diagram		
Version	0	Approved by		
Date	20210515	Checked by		
Modified by		Modify date		
After modification		Modified by		
Before modification		Checked by		
Mark		Proofread by		
Designer		Designer		
Drawer		Drawer		

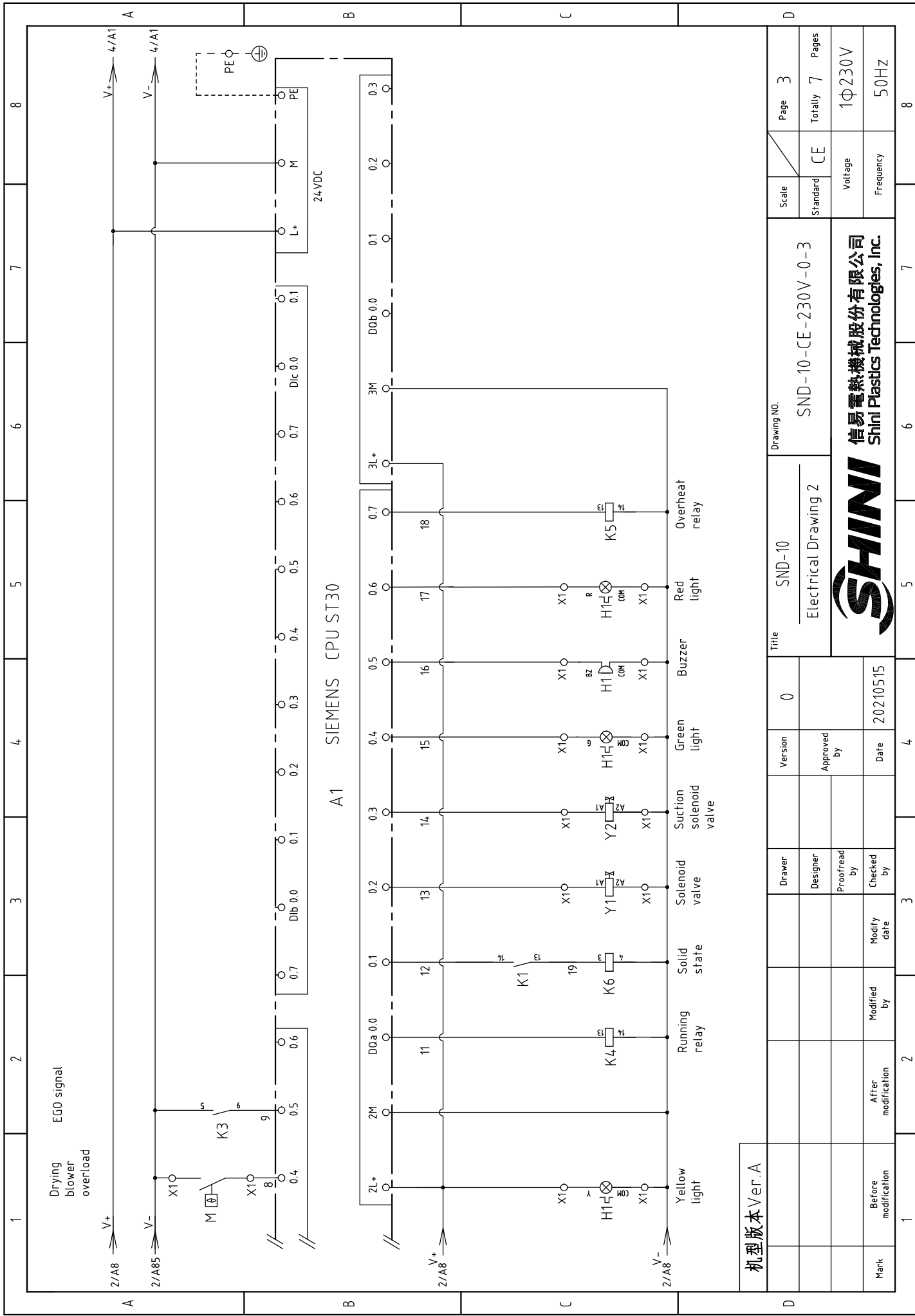


机型版本 Ver.A



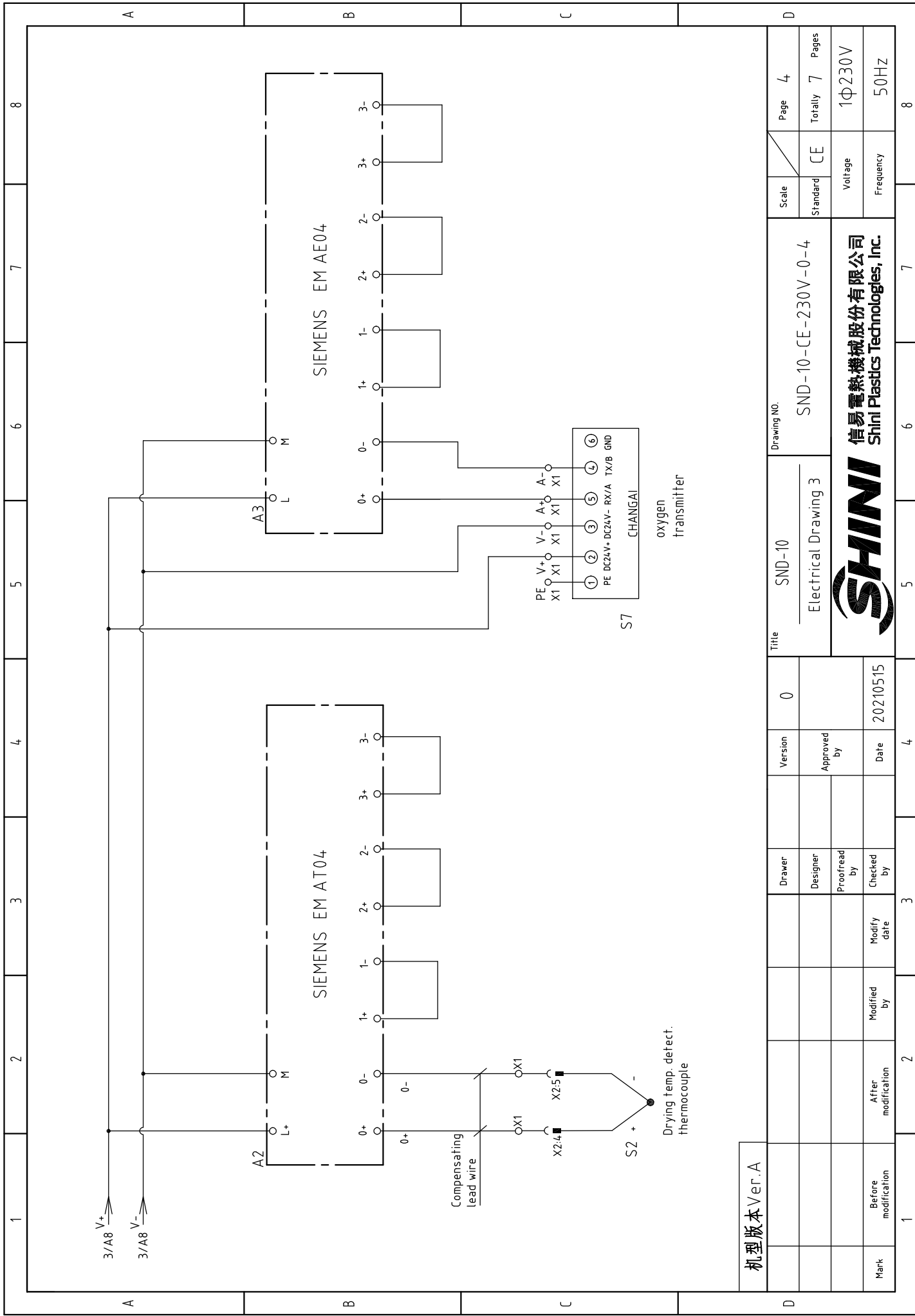
机型版本 Ver. A

Mark	Before modification	Modified by	Modified date	Checked by	Date	Version	0	Title	SND-10	Drawing NO.	SND-10-CE-230V-0-2	Scale	CE	Page	2			
	After modification	Modified by	Modified date	Checked by	Date		Approved by		Electrical Drawing 1		Standard		Totally		7	Pages		
											Voltage	1 ϕ 230V						
											Frequency	50HZ						
											SHINI		信易電熱機械股份有限公司 Shini Plastics Technologies, Inc.					
											1	2	3	4	5	6	7	8



机版本 Ver.A	Version	0
Mark	Approved by	
Before modification	Date	20210515
After modification	Checked by	
Modified by	Modify date	
Running relay	Designer	
Suction solenoid valve	Proofread by	
Solenoid valve	Checked by	
Solid state	Drawer	
Yellow light	Designer	
Green light	Proofread by	
Buzzer	Checked by	
Red light	Designer	
Overheat relay	Proofread by	
	Checked by	

Title		SND-10		Drawing NO.		SND-10-CE-230V-0-3	
Electrical Drawing 2		Scale		Standard		CE	
Version		Page		Voltage		1φ230V	
Date		Totally		Frequency		50HZ	
20210515		7		8		8	
信易電熱機械股份有限公司 Shini Plastics Technologies, Inc.							

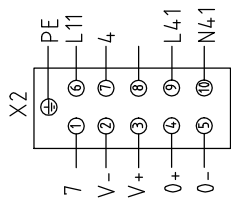
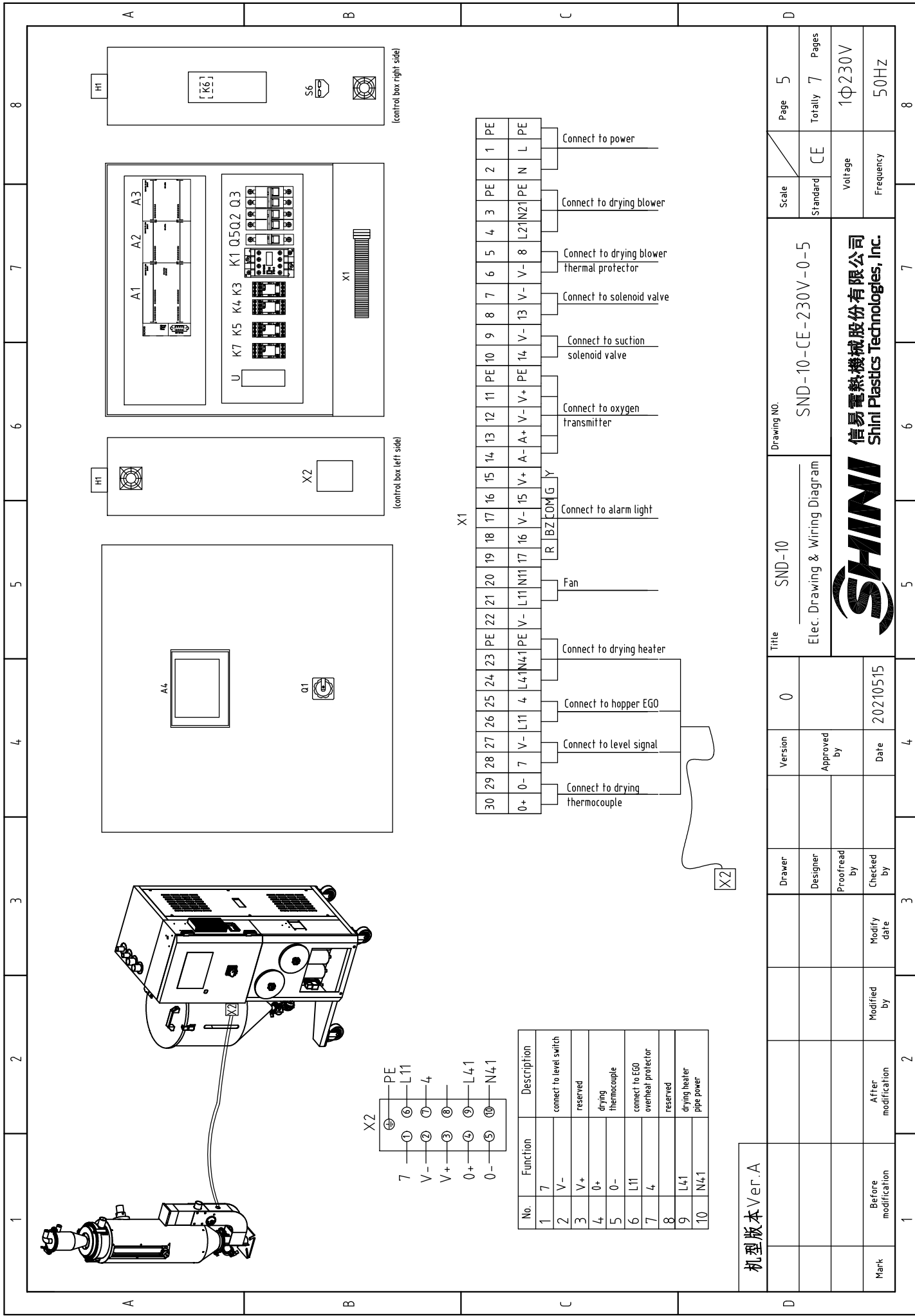


机型版本 Ver.A

Mark	Before modification	Modified by	Modify date	Checked by	Date	Approved by	Version	0	Title	SND-10	Drawing NO.	SND-10-CE-230V-0-4
	After modification				20210515				Electrical Drawing 3			




Scale	Page	4
Standard	Ce	Totally
		7
Voltage	1φ230V	
Frequency	50HZ	



No.	Function	Description
1	7	connect to level switch
2	V-	reserved
3	V+	reserved
4	0+	drying thermocouple
5	0-	connect to EGO overheat protector
6	L11	reserved
7	4	reserved
8	L41	drying heater pipe power
9	L41	
10	N41	

X1		
30	0+	Connect to drying thermocouple
29	0-	Connect to drying thermocouple
28	7	Connect to level signal
27	V-	Connect to level signal
26	L11	Connect to level signal
25	4	Connect to hopper EGO
24	L41	Connect to hopper EGO
23	N41	Connect to hopper EGO
22	PE	Connect to drying heater
21	PE	Connect to drying heater
20	19	Fan
19	18	Fan
18	17	Connect to alarm light
17	V+	Connect to alarm light
16	V+	Connect to alarm light
15	A+	Connect to alarm light
14	A+	Connect to alarm light
13	V+	Connect to oxygen transmitter
12	V+	Connect to oxygen transmitter
11	PE	Connect to suction solenoid valve
10	PE	Connect to suction solenoid valve
9	V-	Connect to solenoid valve
8	V-	Connect to solenoid valve
7	V-	Connect to solenoid valve
6	V-	Connect to solenoid valve
5	8	Connect to drying blower thermal protector
4	V-	Connect to drying blower thermal protector
3	L21	Connect to drying blower
2	N21	Connect to drying blower
1	PE	Connect to power
1	PE	Connect to power

机型版本 Ver.A

Title	SND-10		Drawing No.		SND-10-CE-230V-0-5									
	Elec. Drawing & Wiring Diagram		Scale		Page 5									
Version	0		Standard	CE		Totally 7 Pages								
Approved by			Voltage	1φ230V		Frequency	50HZ							
Date	20210515		 信易電熱機械股份有限公司 Shini Plastics Technologies, Inc.											
Checked by			<table border="1"> <tr> <td>Mark</td> <td>Before modification</td> <td>Modified by</td> <td>Modify date</td> </tr> <tr> <td>1</td> <td></td> <td></td> <td></td> </tr> </table>				Mark	Before modification	Modified by	Modify date	1			
Mark	Before modification	Modified by	Modify date											
1														

1		2		3		4		5		6		7		8	
NO.	Symbol	Name	Manufacturer	Type	Specification	Number	Material number	Remark							
1	Q1	Main power switch	EATON	TO-2-1/EA/SVB/20A	20A	1	YE10021160000								
2	Q2	Circuit breaker	TECO	BM-63C/2010S	10A 2P	1	YE40201000100								
3	Q3	Circuit breaker	TECO	BM-63C/3006S	6A	1	YE40200600000								
4		Excitation release	YIJIN	MX	220V 50/60Hz	1	YE40023560000								
5	Q5	Circuit breaker	TECO	BM-63C/3003S	3A	1	YE40100203000								
6	K1	Contact	SIEMENS	3RT6015-1AN21	7A 220V 50/60Hz	1	YE00601521000								
7	K3	Middle relay	WEIDMULLER	DRM270730LT	220V 50/60Hz	1	YE03270700000								
8	K4 K5 K7	Middle relay	WEIDMULLER	DRM270724LT	24V DC	3	YE03272400000								
9	K6	Solid state relay	FOTEK	KSR-40DA-H	40A/480VAC/4-32VDC	1	YE03404003200								
10	H1	3-color alarm indicator	SHINI	SWI-P AC/DC24	AC/DC24 50/60Hz	1	BL90002401520								
11	A1	Programmable logic controller	SIEMENS	CPU ST30 DC/DC/DC	24VDC 50/60Hz	1	YE81003006100								
12	A2	PLC extended module	SIEMENS	4-point thermocouple temp. module EM AT04	24VDC	1	YE82000400300								
13	A3	PLC extended module	SIEMENS	4-point input analog module EM AT04	24VDC	1	YE82000400100								
14	A4	Human-machine interface	FLEXEM	F007R	24VDC	1	YE80072400000								
15		Super 5 network jumper 2M	----	----	BA	1	YE90000201600								
16	U	DC power	----	NES-35-24	OUT=DC24V 15A	1	YE71352400100								
17	FM	Fan	SUNON	DP-200A	230VAC 40W	1	-----	(1)							
18	S1	Level switch	----	----	----	1	-----	(1)							
19	S2	Thermocouple	SHINI	ST-K	K	1	-----	(1)							
20	S5	Overheat protector	----	----	250V 5(4)A	1	-----	(1)							
21	S6	Connect to interface board RS-485(Dsub-9pin connector)	YUYUN	----	----	1	YE90048501200								
22		Shell RS-485(SAL-700G-A-19)ver.0	BNGCHEN	----	----	1	YR40048500000								
23	S7	Oxygen transmitter	CHANGAI	CI-PC881	24VDC	1	-----	(1)							
24	Y1 Y2	Solenoid valve	----	MSFW-230-50/60	24V 50/60Hz	2	-----	(1)							
25	X1	Terminal board	HONYWLL	SK2.5	2.5mm ²	29	YE60002503200								
机型版本 Ver.A Notes: (1)Materials not in the control;															
		Drawer		Version		Title		Drawing NO.		Scale		Page		8	
		Designer		Approved by		SND-10		SND-10-CE-230V-0-6		Standard		Page 6		Totally 7 Pages	
		Proofread by		Date		Electrical Parts List 1				CE		Voltage		1Φ230V	
Mark		After modification		Modify date						Frequency		50HZ			
1		2		3		4		5		6		7		8	



1		2		3		4		5		6		7		8	
NO.	Symbol	Name	Manufacturer	Type	Specification	Number	Material number	Remark							
26		Terminal board	HONYWLL	SK2.5PE	2.5mm ² PE	4	YE60002503400								
27		Terminal fittings E/GK series	HONYWLL	E	GK	5	YE60000003900								
28	X2	Heavy-duty connector	HARTING	10P+PE(plug+socket) Han E	10M/F	1	YE68001001300								
29	M	Blower	SHINI	15 ∇ 1 Φ /230V	0.1kW	1	-----	(1)							
30	EH	Pipe heater	SHINI	0.8kW	230V	1	-----	(1)							
									A						
									B						
									C						
									D						
机型版本 Ver.A Notes: (1)Materials not in the control;															
			Title		SND-10		Drawing NO.		SND-10-CE-230V-0-7		Scale		Page 7		
			Version		0		Electrical Parts List 1		Standard		CE		Totally 7 Pages		
			Drawer				Approved by		Date		Voltage		1 Φ 230V		
			Designer				Proofread by		20210515		Frequency		50HZ		
			Checked by				Modify date								
			After modification				Modified by								
			Before modification				Modify date								
SHINI 信易電熱機械股份有限公司 Shini Plastics Technologies, Inc.															
			3		4		5		6		7		8		