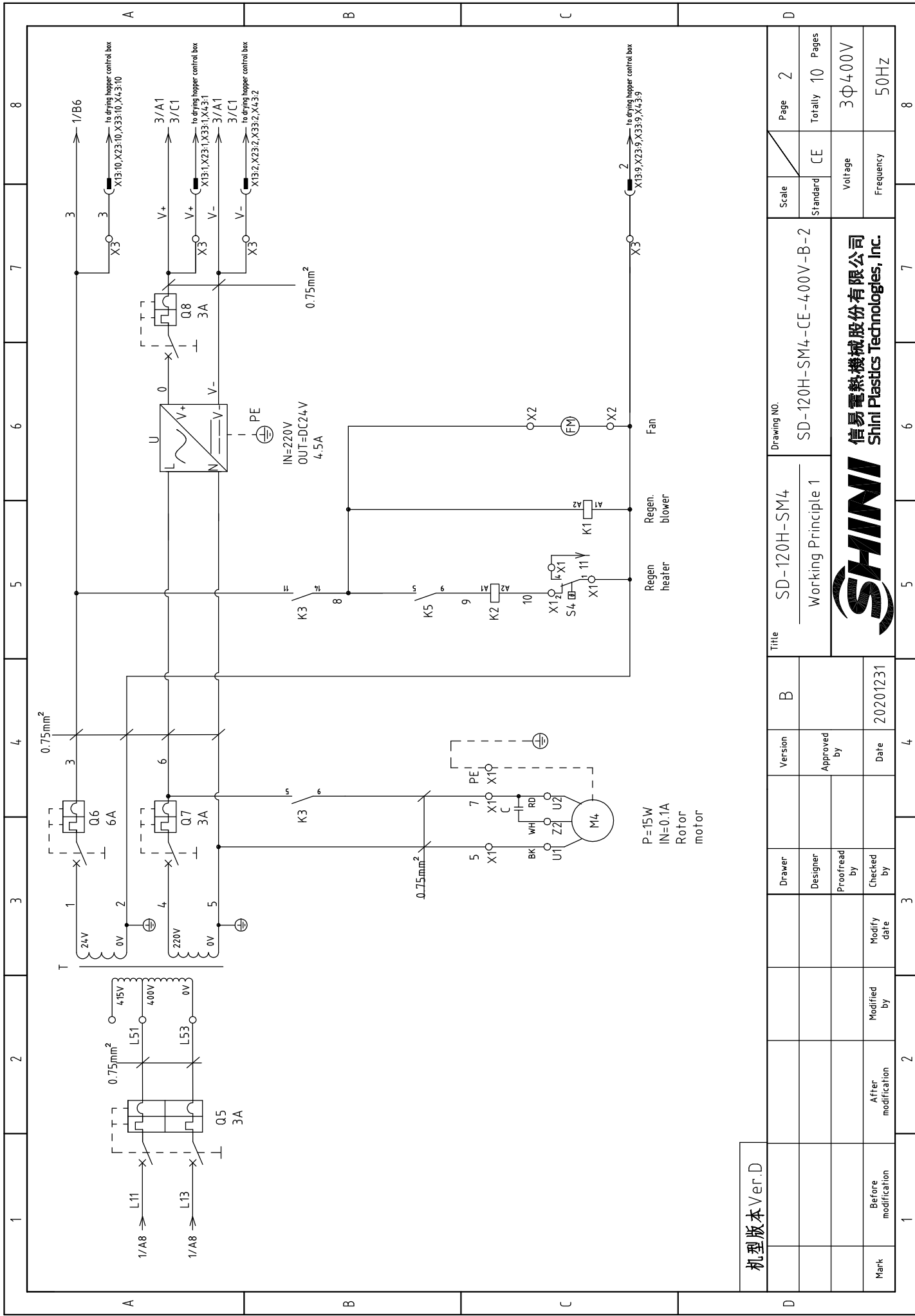
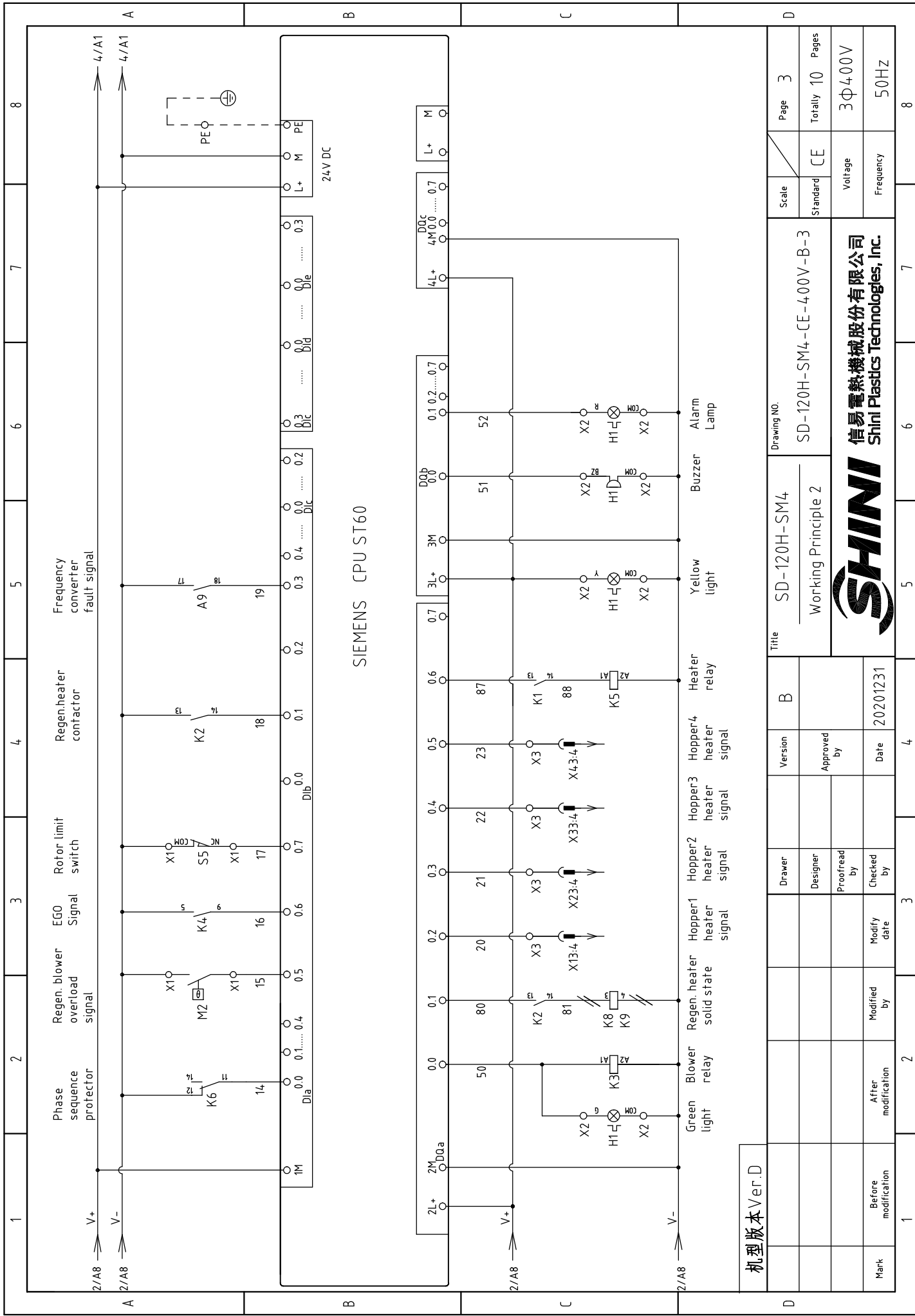


机型版本 Ver.D

Mark	Before modification	Modified by	Modify date	Checked by	Date	Approved by	Version	B	Title	SD-120H-SM4 Main Circuit Diagram	Drawing NO.	SD-120H-SM4-CE-400V-B-1	Scale	CE	Page	1
	After modification				20201231										Totally	10
															Voltage	3φ400V
															Frequency	50Hz

SHINI
信易电热机械股份有限公司
Shini Plastics Technologies, Inc.



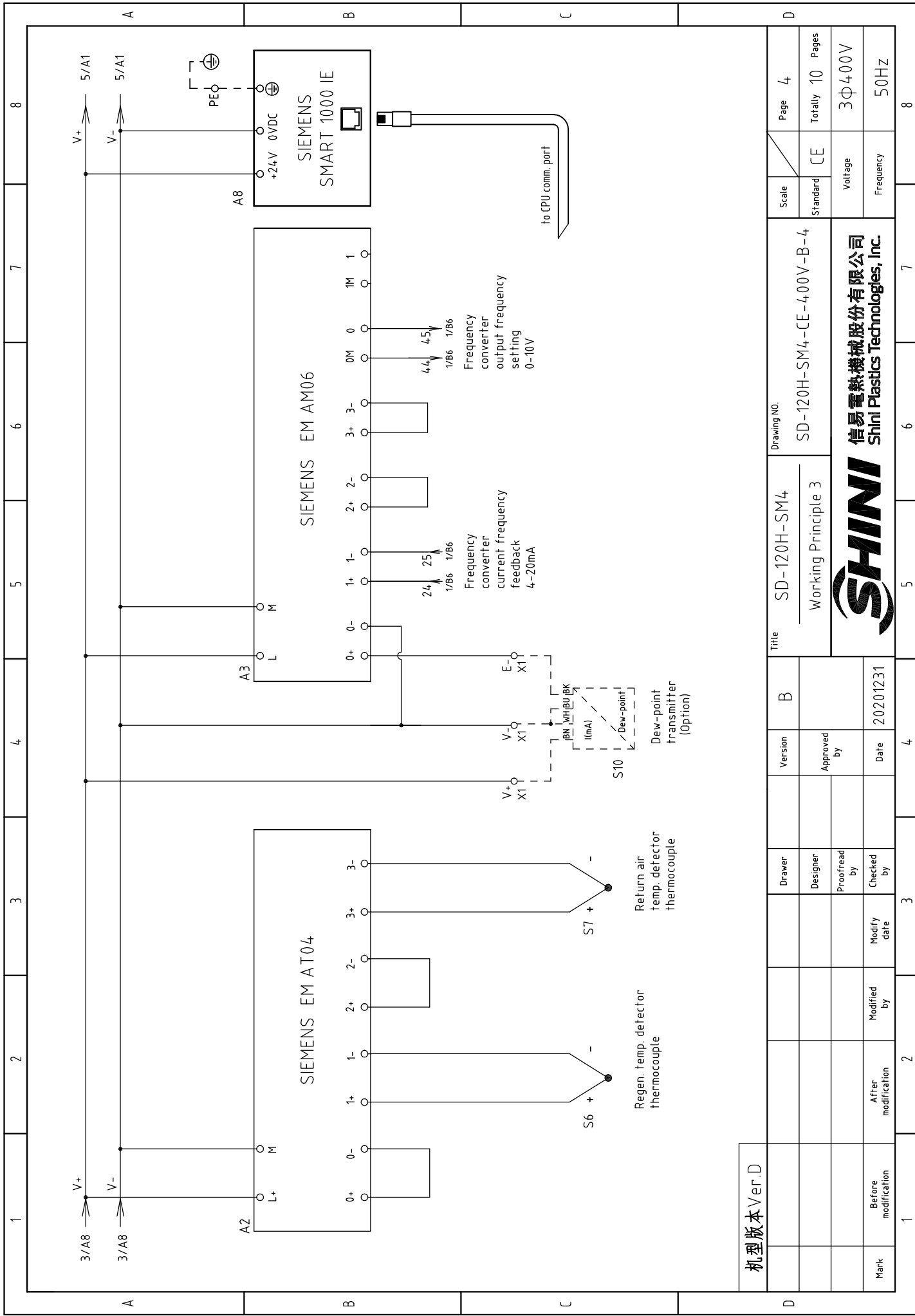


SIEMENS CPU ST60

机型版本 Ver.D

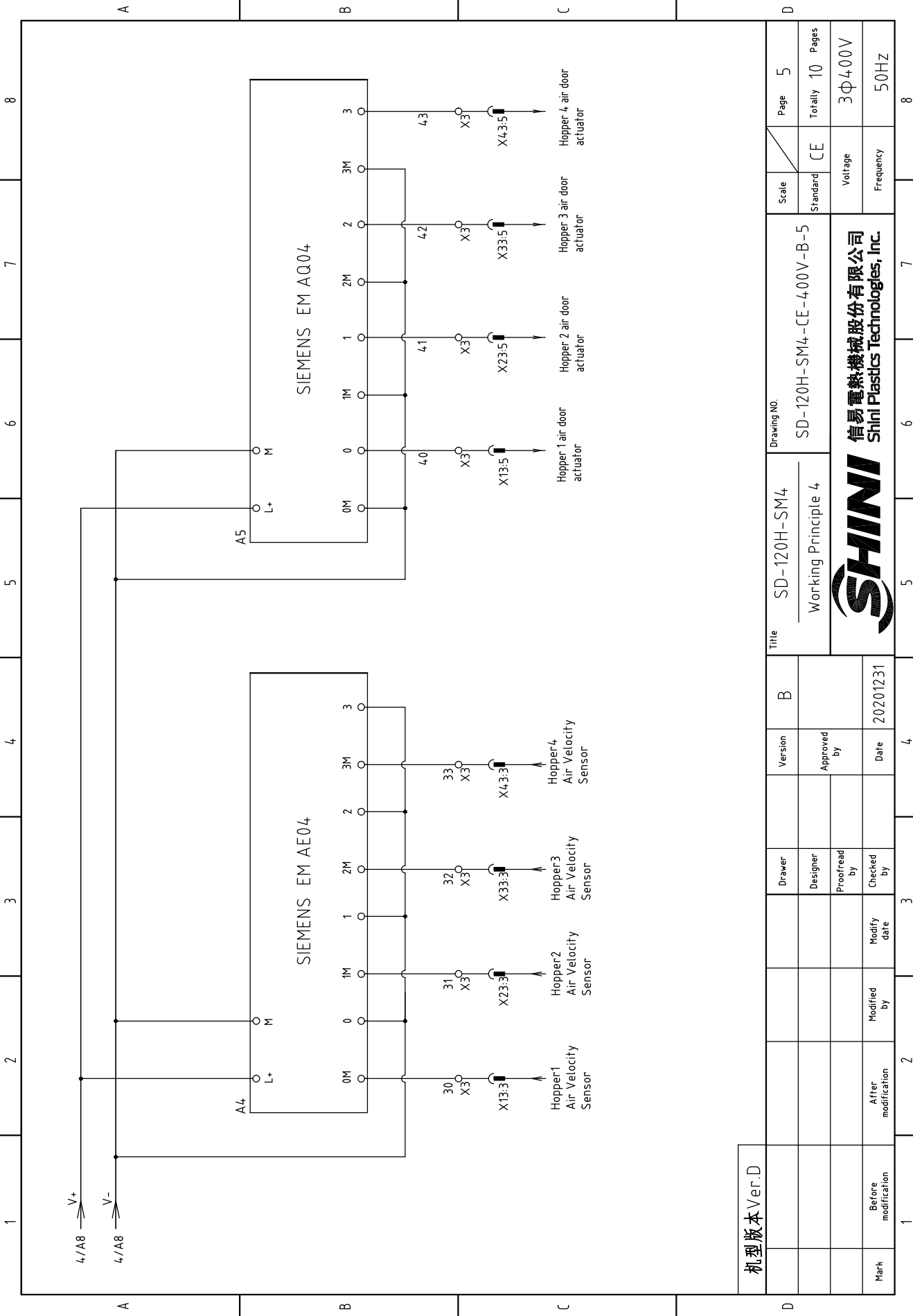
Title		SD-120H-SM4		Drawing NO.		SD-120H-SM4-CE-400V-B-3		Page 3	
Version		B		Approved by		Standard		CE	
Drawer		Designer		Proofread by		Voltage		3Φ400V	
Date		20201231		Checked by		Frequency		50Hz	
Modified by		Modify date		After modification		Before modification		Totally 10 Pages	
Mark		1		2		3		4	
5		6		7		8		8	





机型版本 Ver.D

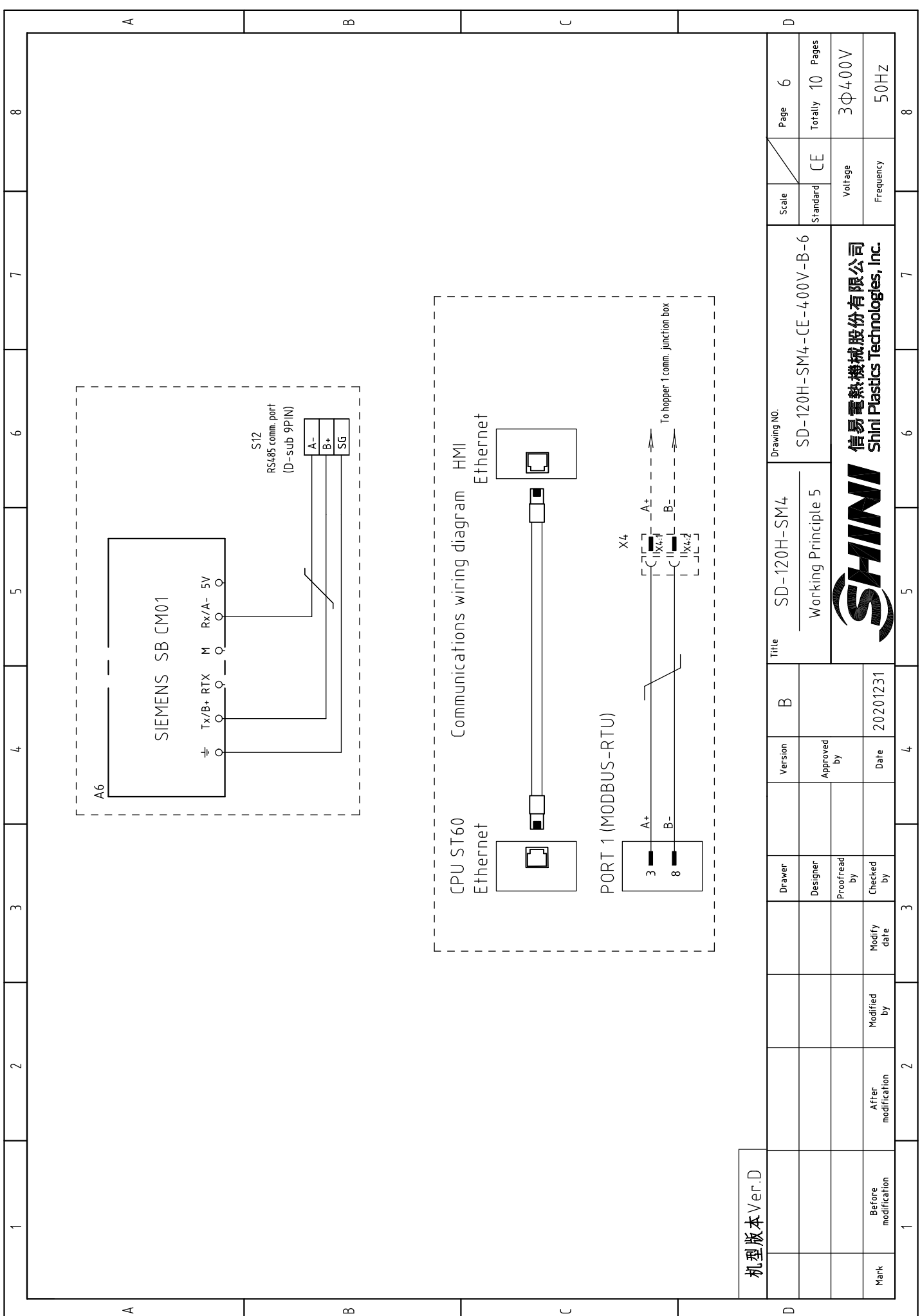
Version	Approved by	Date
20201231		
Drawer	Designer	Proofread by
Checked by	Modify date	Modified by
Before modification	After modification	



机型版本 Ver.D

Mark	Before modification	Modified by	Modify date	20201231	Date	20201231	Approved by	Version	B	Title	SD-120H-SM4		Drawing NO.	Scale	Page	5
	After modification	Modified by	Modify date	20201231							Working Principle 4				SD-120H-SM4-CE-400V-B-5	
														Voltage		3Φ400V
														Frequency		50HZ
														Page		5
														Totally		10
														Pages		10
														Frequency		50HZ
														Voltage		3Φ400V



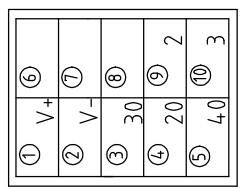


机型版本 Ver.D

Drawer	B	Version	SD-120H-SM4	Drawing NO.	
Designer		Approved by	Working Principle 5	SD-120H-SM4-CE-4.00V-B-6	
Proofread by		Date	20201231	Scale	CE
Checked by				Standard	CE
Modify date				Voltage	3Φ400V
After modification				Frequency	50Hz
Before modification				Page	6
Mark				Totally	10 Pages

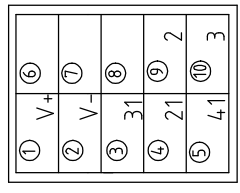
SHINI 信易電熱機械股份有限公司
Shini Plastics Technologies, Inc.

No.	Function	Description
1	V+	DC24V power
2	V-	
3	30	Air velocity sensor signal
4	20	Drying heater heating signal
5	4-0	Actuator action signal
6		
7		
8	2	controller AC24V power
9	3	
10		



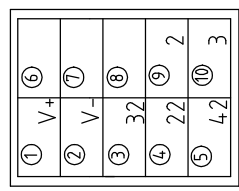
1# hopper 10P heavy-duty connector X13

No.	Function	Description
1	V+	DC24V power
2	V-	
3	31	Air velocity sensor signal
4	21	Drying heater heating signal
5	4-1	Actuator action signal
6		
7		
8	2	controller AC24V power
9	3	
10		



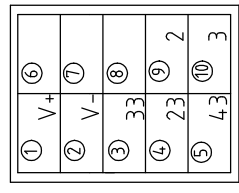
2# hopper 10P heavy-duty connector X23

No.	Function	Description
1	V+	DC24V power
2	V-	
3	32	Air velocity sensor signal
4	22	Drying heater heating signal
5	4-2	Actuator action signal
6		
7		
8	2	controller AC24V power
9	3	
10		



3# hopper 10P heavy-duty connector X33

No.	Function	Description
1	V+	DC24V power
2	V-	
3	33	Air velocity sensor signal
4	23	Drying heater heating signal
5	4-3	Actuator action signal
6		
7		
8	2	controller AC24V power
9	3	
10		



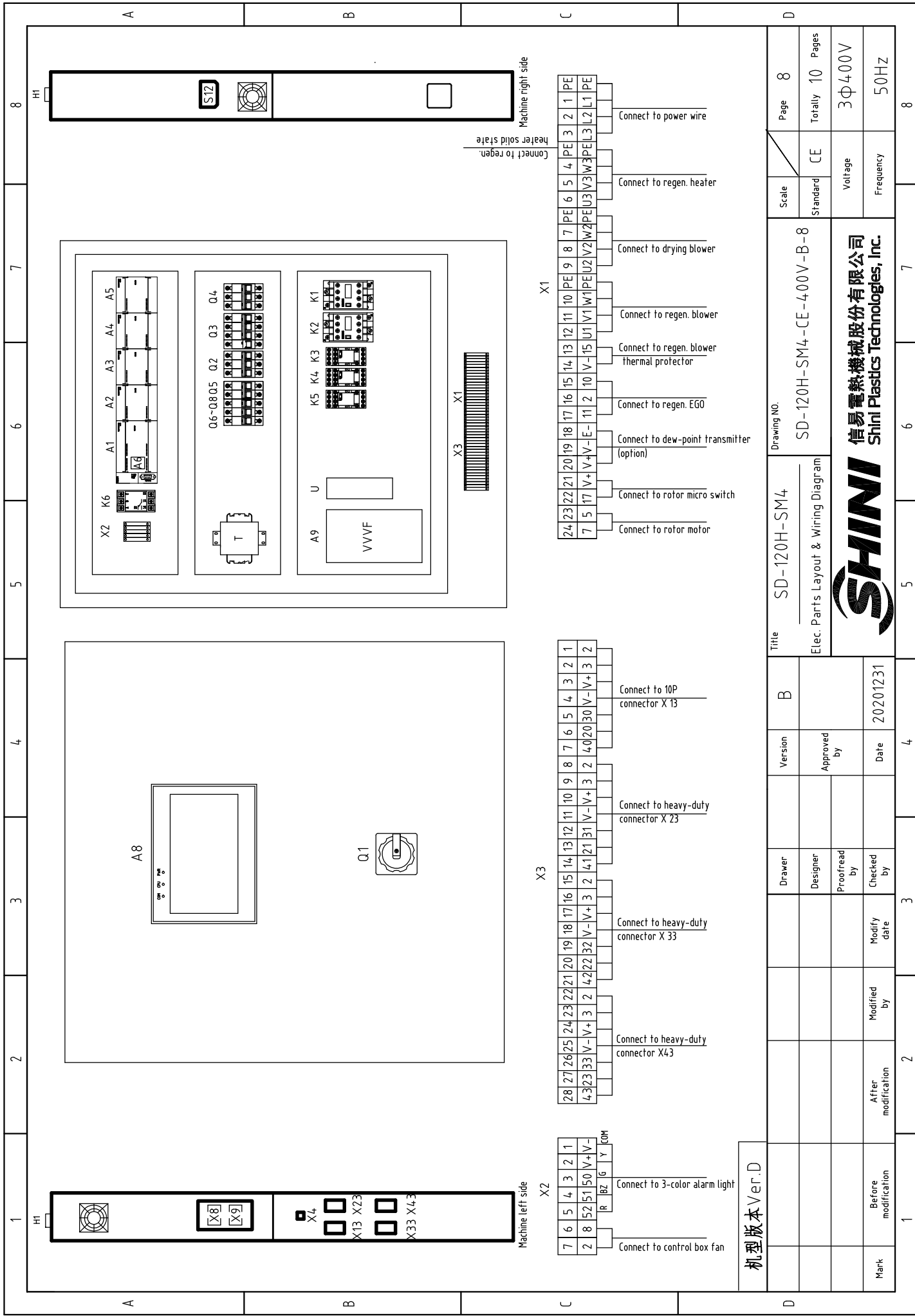
4# hopper 10P heavy-duty connector X43

机型版本 Ver.D

Title	SD-120H-SM4	Drawing NO.	SD-120H-SM4-CE-400V-B-7	Scale	CE	Page	7	
	Heavy-duty Wiring Drawing		Standard		Totally		10	Pages
Mark	Before modification	After modification	Modified by	Modify date	Checked by	Date	20201231	
	Proofread by							Approved by
							Frequency	50HZ



信易電熱機械股份有限公司
Shini Plastics Technologies, Inc.



1	2	3	4	5	6	7	8
---	---	---	---	---	---	---	---

A	B	C	D
---	---	---	---

HI	ST2	Machine right side
----	-----	--------------------

Connect to regen. heater solid state	Connect to power wire
--------------------------------------	-----------------------

Connect to regen. heater	Connect to drying blower
--------------------------	--------------------------

Connect to regen. blower thermal protector	Connect to regen. blower
--	--------------------------

Connect to regen. EGO	Connect to dew-point transmitter (option)
-----------------------	---

Connect to rotor micro switch	Connect to rotor motor
-------------------------------	------------------------

Connect to 10P connector X13	Connect to heavy-duty connector X23
------------------------------	-------------------------------------

Connect to heavy-duty connector X33	Connect to heavy-duty connector X43
-------------------------------------	-------------------------------------

Connect to 3-color alarm light	Connect to control box fan
--------------------------------	----------------------------

机型版本 Ver.D	Title SD-120H-SM4		Drawing NO. SD-120H-SM4-CE-400V-B-8		Page 8
	Elec. Parts Layout & Wiring Diagram		Standard CE		Totally 10 Pages
Mark	Before modification	After modification	Modified by	Modified date	Checked by
Version	B	Approved by	Date 20201231		Checked by
Designer	Proofread by	Checked by	Date		Checked by
Drawer	Designer	Proofread by	Date		Checked by
Version	B	Approved by	Date 20201231		Checked by
Scale	Standard CE		Voltage 3Φ400V		Frequency 50Hz



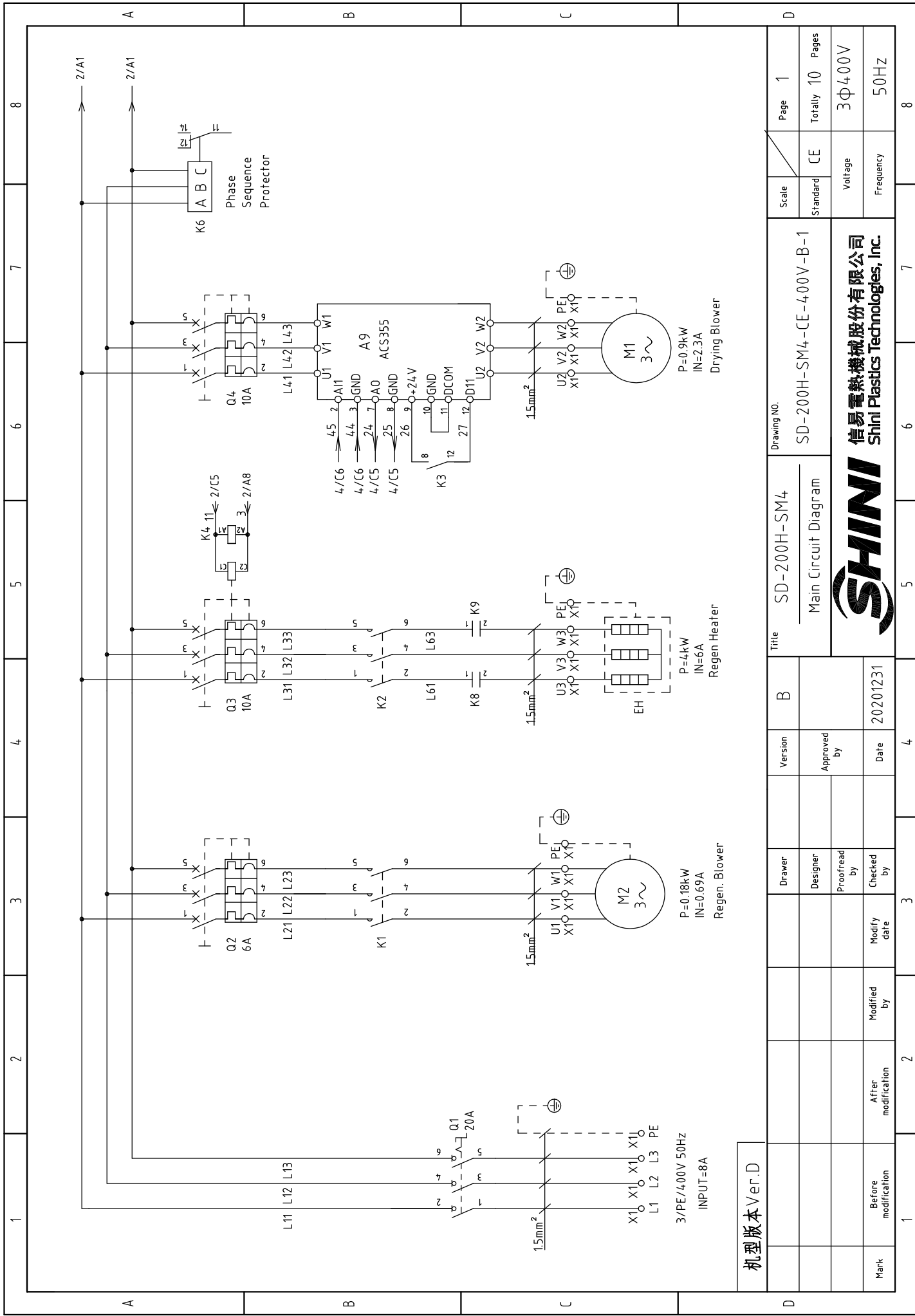
机型版本 Ver.D

1		2		3		4		5		6		7		8		
No.	Symbol	Name	Manufacturer	Type	Specification	Number	Material number	Remark								
1	Q1	Main power switch	EATON	T0-2-1/EA/SVB	20A	1	YE10021160000									
2	Q2	Circuit breaker	TECO	BM-63C/3006S	6A	1	YE40300603000									
3		Release	YIJIN	MX	AC24V	1	YE40024000000									
4	Q3 Q4	Circuit breaker	TECO	BM-63C/3010S	10A	2	YE40301003000									
5	Q5	Circuit breaker	TECO	BM-63C/2003S 2P	3A	1	YE40200203000									
6	Q6	Circuit breaker	TECO	BM-63C/1006S 1P	6A	1	YE40100600100									
7	Q7 Q8	Circuit breaker	TECO	BM-63C/1003S 1P	3A	2	YE40100203000									
8	K1 K2	Contactors	SIEMENS	3RT6015-1AB01	AC24V 50/60Hz	2	YE00601502500									
9	K3	Middle relay	HONEYWELL	GR-4C-DC24V	DC24V	1	YE03042400500									
10	K4	Middle relay	HONEYWELL	GR-2C-AC24V	AC24V 50/60Hz	1	YE03022400300									
11	K5	Middle relay	HONEYWELL	DRM270024LT	DC24V	1	YE03272400000									
12	K6	Phase sequence protector	CHAOSHI	ABJ2-12W/380V	400V 50/60Hz	1	YE03103800000									
13	K8 K9	Solid-state relay	FOTEK	KSR-40DA-H	40A/480VAC/4-32VDC	2	YE03404003200									
14	T	Mutual transformer	JIUXIN	IN=400V OUT=230V/24V	800mA/230VA	1	YE70040004100									
15	A1	PLC programmable controller	SIEMENS	CPU ST60 DC/DC/DC	24VDC	1	YE90662000100									
16	A2	Thermocouple module	SIEMENS	EM AT04	24VDC	1	YE82000400300									
17	A3	Extension module	SIEMENS	EM AE04	24VDC	1	YE82000400100									
18	A4	Extension module	SIEMENS	EM AM06	24VDC	1	YE90420600000									
19	A5	Extension module	SIEMENS	EM AQ04	24VDC	1	YE82000400200									
20	A6	Extension module	SIEMENS	SB CM01	24VDC	1	YE90048501300									
21	A8	Human machine interface	SIEMENS	SMART 1000	24VDC	1	YE80024000000									
22	A9	Frequency inverter	ABB	ACS355-03E-04A1-4	400V 0.75kW	1	YE75350300100									
23		Frequency controller	ABB	J404	----	1	YE81040400000									
24	U	DC Power	---	S-100-24	OUT=DC24V 4.5A	1	YE71102400000									
25	H1	Alarm indicator	SHINI	SWI-P-AC/DC24(三色优先级)	24V AC/DC	1	BL90002401520	(1)								
机型版本 Ver.D		Notes: (1)Means it's not the material inside the control box. (2) Dev-point transmitter;														
		Drawer	Version	Title		Drawing NO.		Scale	Page							
		Designer	B	SD-120H-SM4		SD-120H-SM4-CE-400V-B-9		CE	9							
		Proofread by	Approved by	Elec. Parts List 1				Standard	Totally							
		Checked by	Date					Voltage	10							
		Modify date	20201231					Frequency	Pages							
Mark	Before modification	After modification														
1	2	3	4	5	6	7	8									



1		2		3		4		5		6		7		8	
No.	Symbol	Name	Manufacturer	Type	Specification	Number	Material number	Remark							
26	S4	Overheat protector	TONGBAO	WR-A-50-300-1000-3	250V 5(4)A	1	----	(1)							
27	S5	Micro switch	----	----	----	1	----	(1)							
28	S6 S7	Thermocouple	SHINI	K TYPE	----	2	----	(1)							
29	S10	Dew-point transmitter	VAISALA	DMT141	POWER=24VDC 4-20mA	1	YE90014-100100	(1) (2)							
30	S12	Communication interface board RS-485 (double Dsub-9pin connector)	YUYUN	----	----	1	YE90048501200								
31		Shell RS485(SAL-700G-A-19)Ver.0	BINCHENG	----	----	1	YR40048500000								
32		Super-5 network jumper	----	2M	BA	1	YE90000201600								
33	X1 X2 X3	Terminal Board	HONEYWELL	SK4.0	4.0mm ²	14	YE60000403200								
34		Terminal Board	HONEYWELL	GK4.0	4.0mm ² PE	4	YE60000403500								
35		Terminal Board	HONEYWELL	SK2.5	2.5mm ²	45	YE60002503200								
36		Terminal fittings	HONEYWELL	E	GK	5	YE60000003900								
37	X4	Heavy-duty connector	HARTING	5P+PE(plug+socket)Han	Q5/0-M/F(without PG11)	1	YE68000501200	(1)							
38	X13 X23 X33 X43	Heavy-duty connector	HARTING	10P+PE(plug+socket) Han	E-10M/F(without PG16)	4	YE68001001300	(1)							
39	FM	Fan	SHINI	----	24V 50/60Hz	1	----	(1)							
40	M1	Drying blower	SHINI	----	400V 50Hz 1.5kW	1	----	(1)							
41	M2	Regen. blower	SHINI	----	400V 50Hz 0.4kW	1	----	(1)							
42	EH	Heater	SHINI	----	400V 50Hz 4KW	1	----	(1)							
C															
D															
机型版本 Ver.D															
Notes: (1)Means it's not the material inside the control box. (2) Dew-point option;															
		Drawer		Version		B		Title		Drawing NO.		Scale		Page	
		Designer		Approved by				SD-120H-SM4		SD-120H-SM4-CE-4.00V-B-10		Standard		Page 10	
		Proofread by		Date		20201231		Elec. Parts List 2				CE		Totally 10 Pages	
Mark		After modification		Modified by		Modify date						Voltage		3φ400V	
		Before modification		Modified by		Modify date						Frequency		50Hz	
1		2		3		4		5		6		7		8	

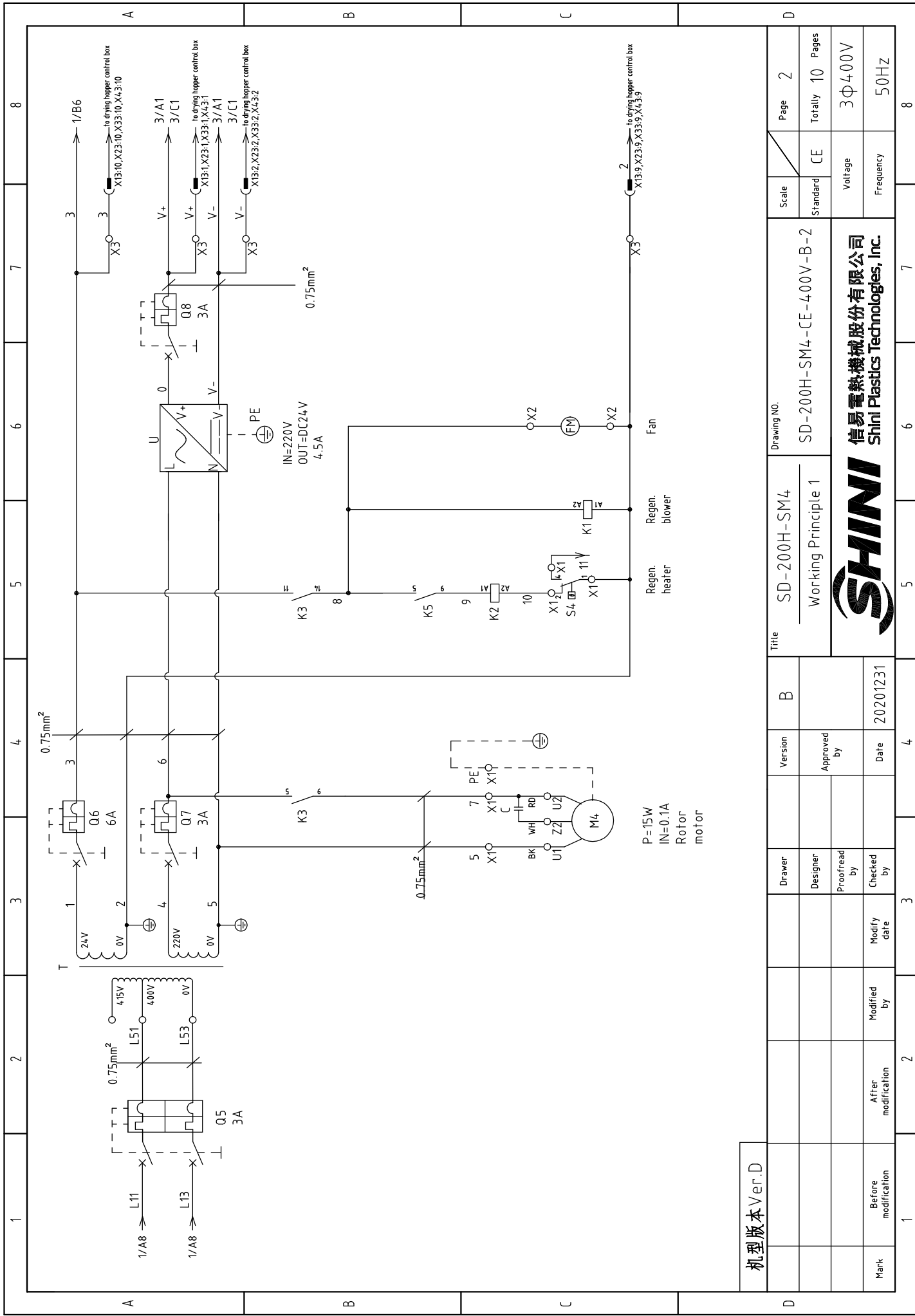




机型版本 Ver.D

Mark	Before modification	Modified by	Modify date	Checked by	Date	Approved by	Version	B	Title	Drawing NO.	Scale	Page 1
	After modification	Modified by	Modify date								Standard	Totally 10
											CE	Pages
											Voltage	3φ400V
											Frequency	50Hz
											SD-200H-SM4-CE-400V-B-1	
											信易电热机械股份有限公司 Shini Plastics Technologies, Inc.	

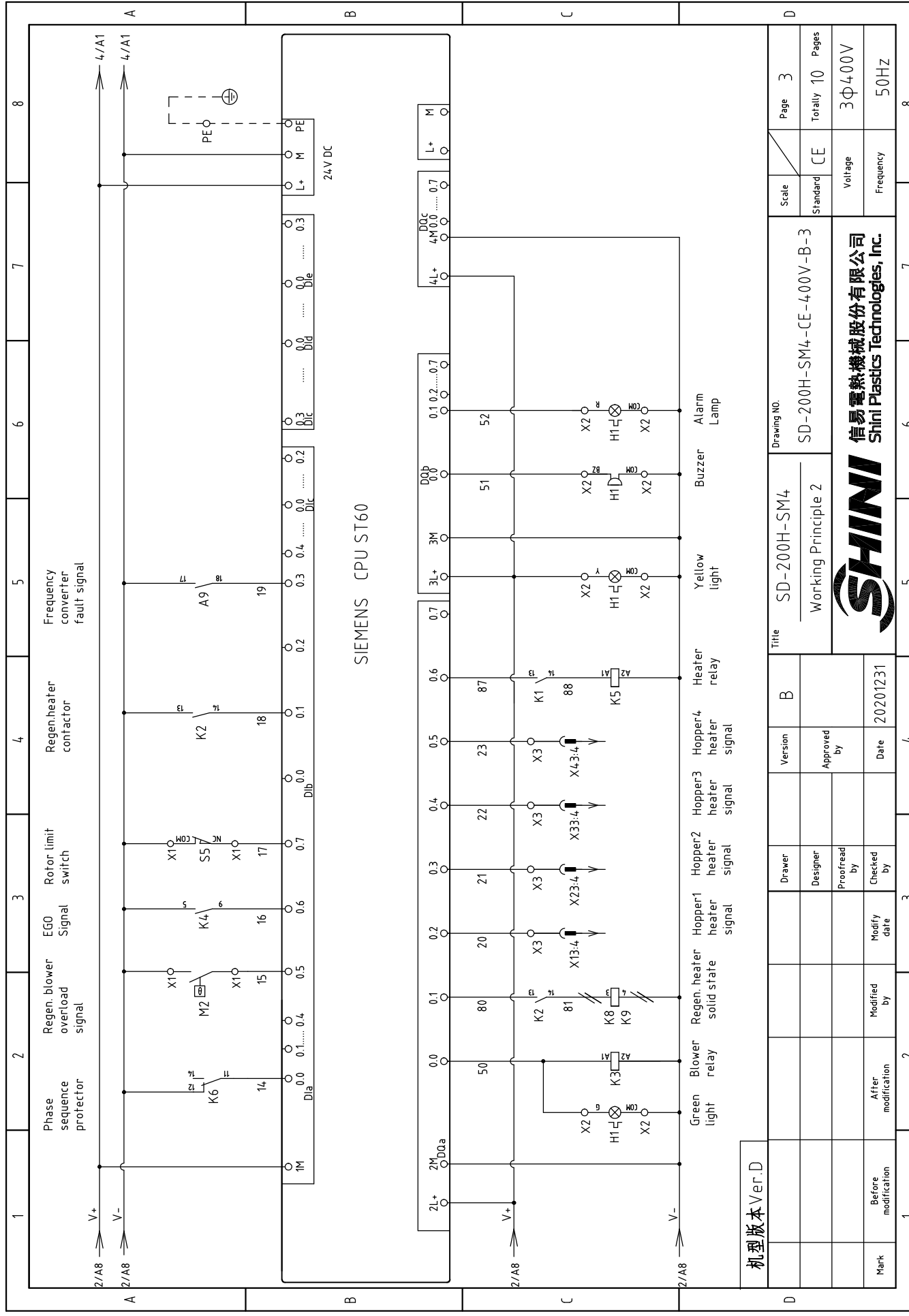




机型版本 Ver.D

D	Mark	Before modification	Modified by	Modify date	Checked by	Approved by	Version	B	Title SD-200H-SM4 Working Principle 1	Drawing NO. SD-200H-SM4-CE-400V-B-2	Scale	Page 2
	After modification	Modified by	Modify date	Checked by	Approved by	Date 20201231	Standard	CE			Standard	Page 2
										Voltage	3Φ400V	
										Frequency	50Hz	
										Totally	10 Pages	
											8	



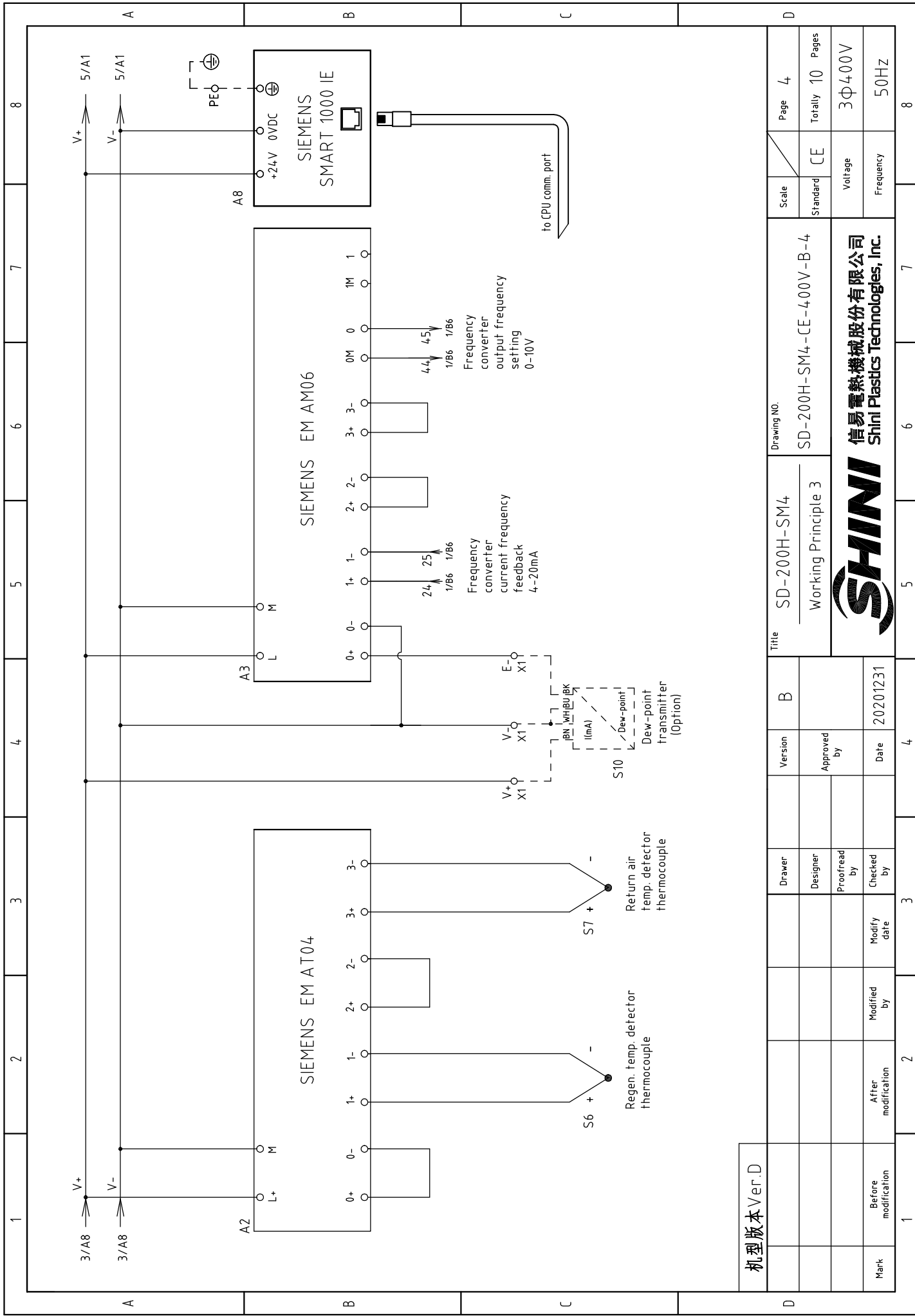


SIEMENS CPU ST60

机版本 Ver.D

1	2	3	4	5	6	7	8
Phase sequence protector	Regen. blower overload signal	EG0 Signal	Rotor limit switch	Regen. heater contactor	Frequency converter fault signal		
2L+	2M	2M	2M	2M	2M	2M	2M
2/A8	2/A8	2/A8	2/A8	2/A8	2/A8	2/A8	2/A8
Green light	Blower relay	Regen. heater solid state	Hopper1 heater signal	Hopper2 heater signal	Hopper3 heater signal	Hopper4 heater signal	Heater relay
Yellow light	Buzzer	Alarm Lamp					
Title		Version		Drawing No.		Scale	
SD-200H-SM4		B		SD-200H-SM4-CE-400V-B-3		CE	
Working Principle 2		Approved by		Page 3		Totally 10 Pages	
SHINI		Checked by		Voltage		Frequency	
20201231		Date		3Φ400V		50HZ	
Before modification		Modified by		3		8	
After modification		Modify date		4		7	
Mark		Proofread by		5		6	
		Designer		6		7	
		Drawer		7		8	

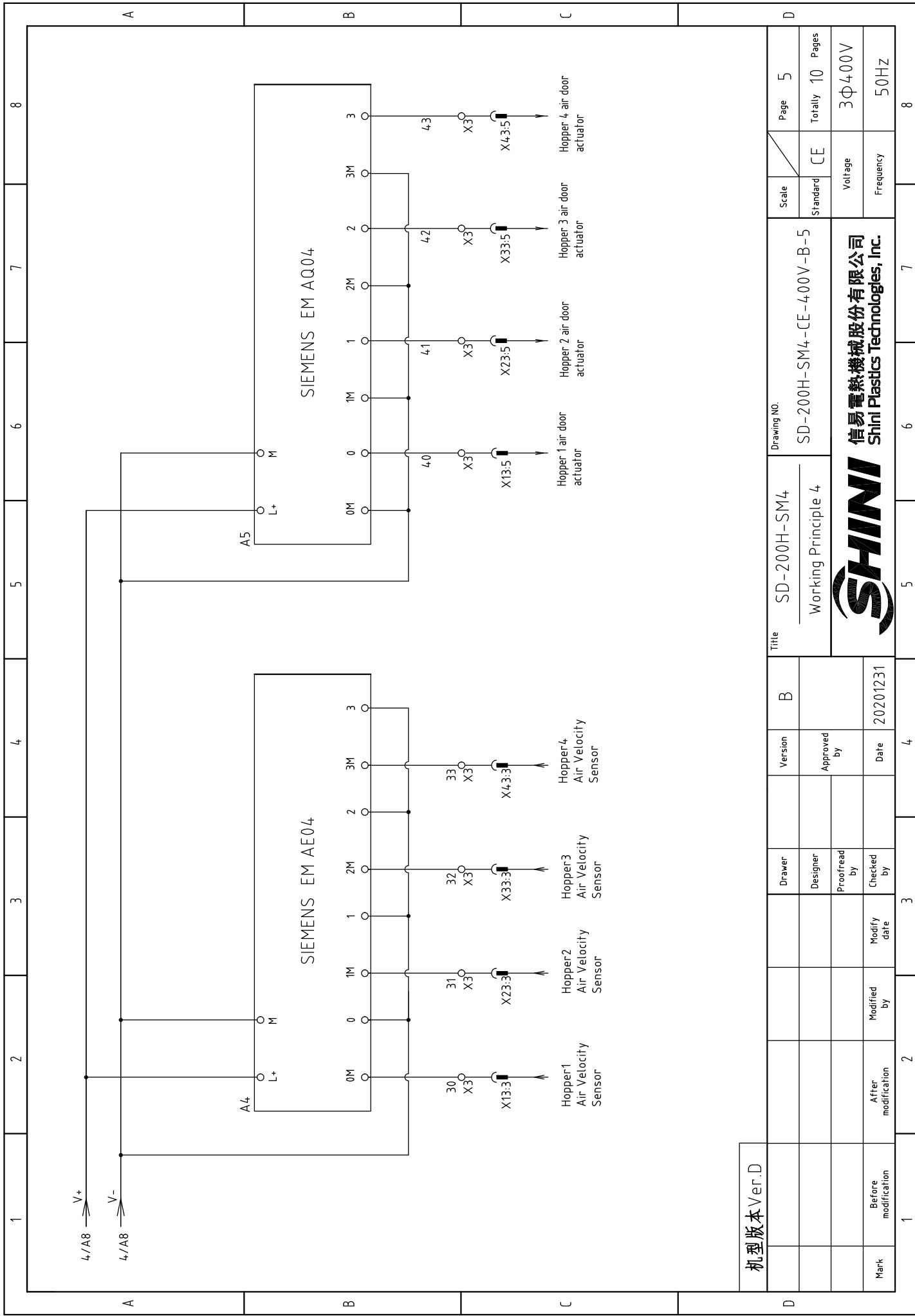




机型版本 Ver.D

Scale	Page	4
	Totally	10
Standard	CE	
	Voltage	3Φ400V
	Frequency	50HZ
Drawing NO. SD-200H-SM4-CE-400V-B-4		
Title SD-200H-SM4 Working Principle 3		
Version	B	
Approved by		
Date	20201231	
Drawer		
Designer		
Proofread by		
Checked by		
Modify date		
Modified by		
Before modification		
After modification		

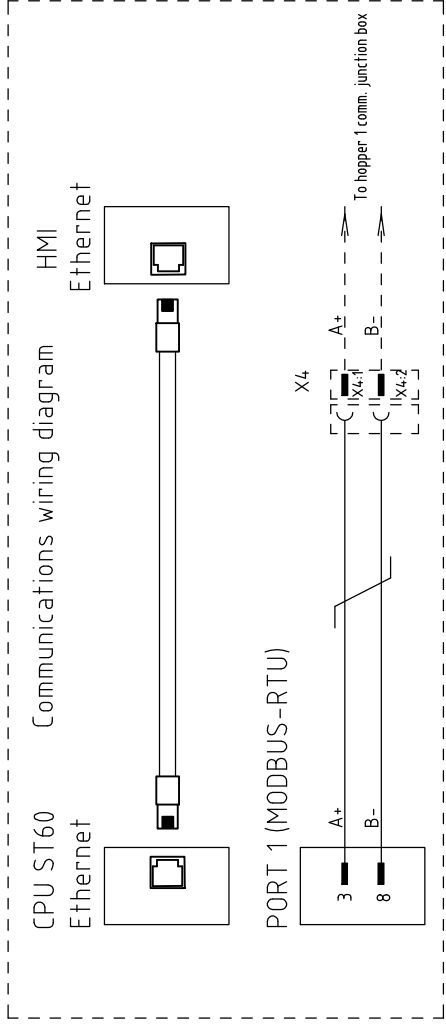
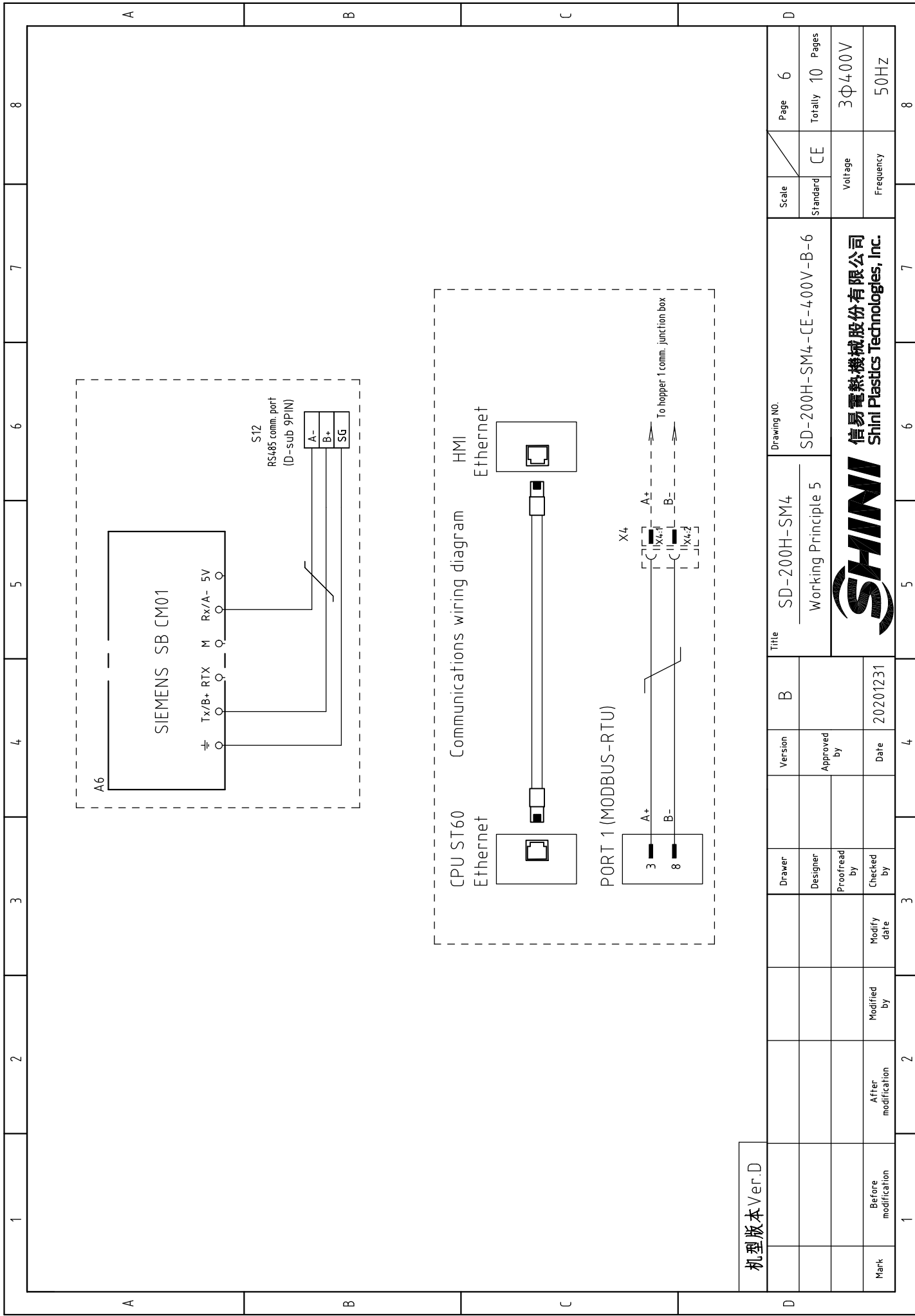
信易電熱機械股份有限公司
Shini Plastics Technologies, Inc.



机型版本 Ver.D

Title		SD-200H-SM4		Drawing NO.		Page 5	
Working Principle 4		SD-200H-SM4-CE-400V-B-5		Standard		CE	
Version		B		Voltage		3Φ400V	
Approved by		Date		Frequency		50Hz	
20201231		20201231		Total		10	
Modified by		Modify date		Pages		5	
After modification		3		Totally		10	
Before modification		4		Voltage		3Φ400V	
1		2		Frequency		50Hz	
2		3		Total		10	
3		4		Pages		5	
4		5		Voltage		3Φ400V	
5		6		Frequency		50Hz	
6		7		Total		10	
7		8		Pages		5	
8		9		Voltage		3Φ400V	
9		10		Frequency		50Hz	





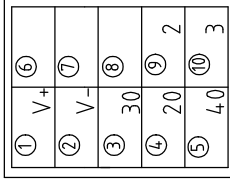
机型版本 Ver.D

Mark	Before modification	Modified by	Modify date	Approved by	Date	Version	B	Title	SD-200H-SM4 Working Principle 5	Drawing NO. SD-200H-SM4-CE-400V-B-6	Scale	Page
	After modification										Standard	CE
											Voltage	3Φ400V
											Frequency	50Hz
												8

SHINI
信易電熱機械股份有限公司
Shini Plastics Technologies, Inc.

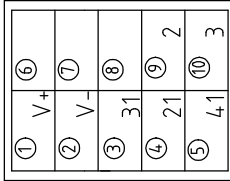
A B C D

No.	Function	Description
1	V+	DC24V power
2	V-	
3	30	Air velocity sensor signal
4	20	Drying heater heating signal
5	40	Actuator action signal
6		
7		
8		
9	2	controller AC24V power
10	3	



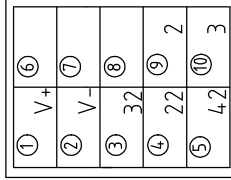
1# hopper 10P heavy-duty connector X13

1	V+	DC24V power
2	V-	
3	31	Air velocity sensor signal
4	21	Drying heater heating signal
5	41	Actuator action signal
6		
7		
8	2	controller AC24V power
9	3	
10		



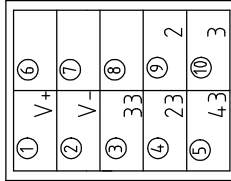
2# hopper 10P heavy-duty connector X23

No.	Function	Description
1	V+	DC24V power
2	V-	
3	32	Air velocity sensor signal
4	22	Drying heater heating signal
5	42	Actuator action signal
6		
7		
8		
9	2	controller AC24V power
10	3	



3# hopper 10P heavy-duty connector X33

1	V+	DC24V power
2	V-	
3	33	Air velocity sensor signal
4	23	Drying heater heating signal
5	43	Actuator action signal
6		
7		
8		
9	2	controller AC24V power
10	3	



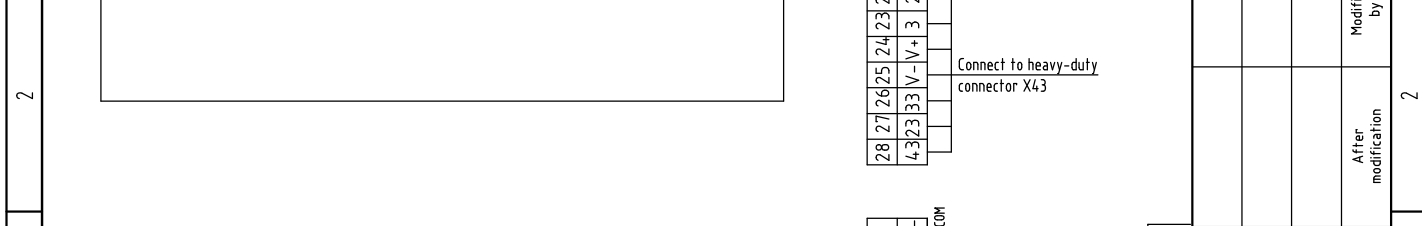
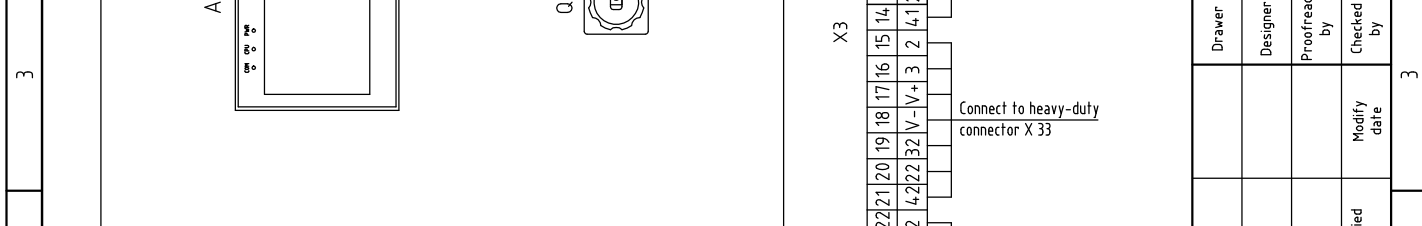
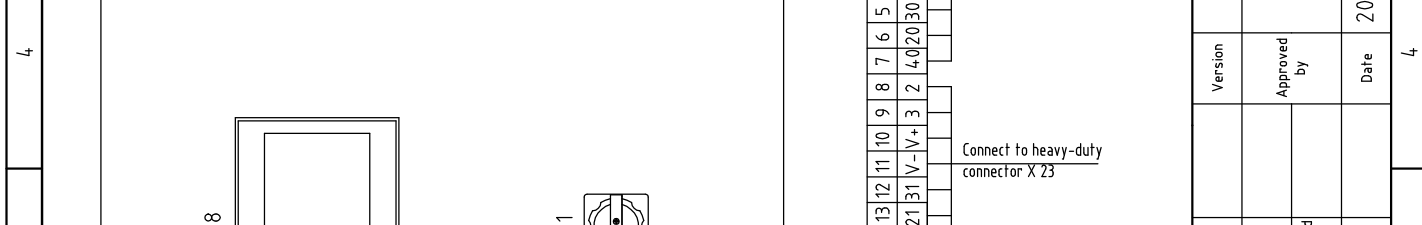
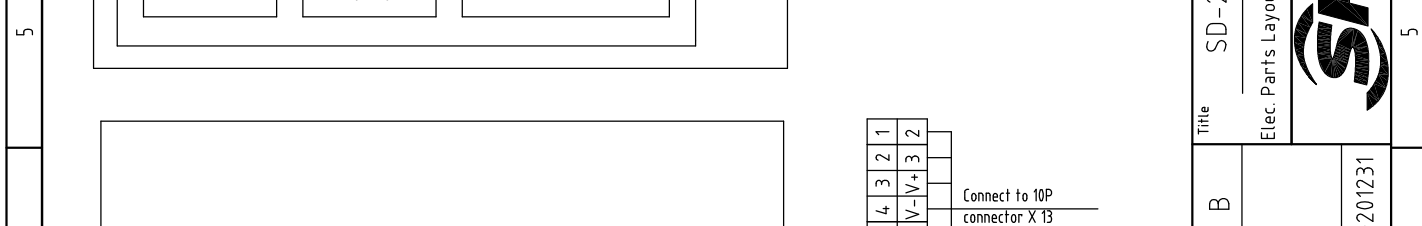
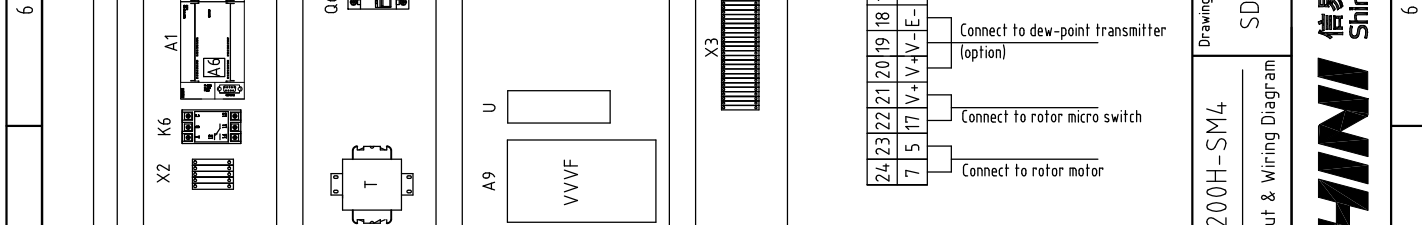
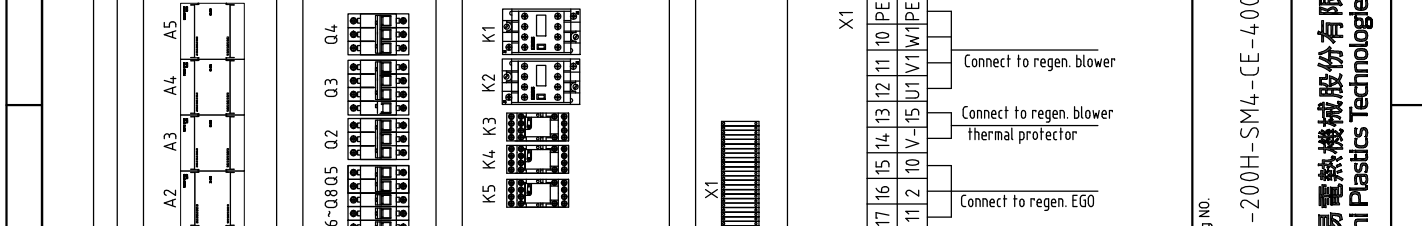
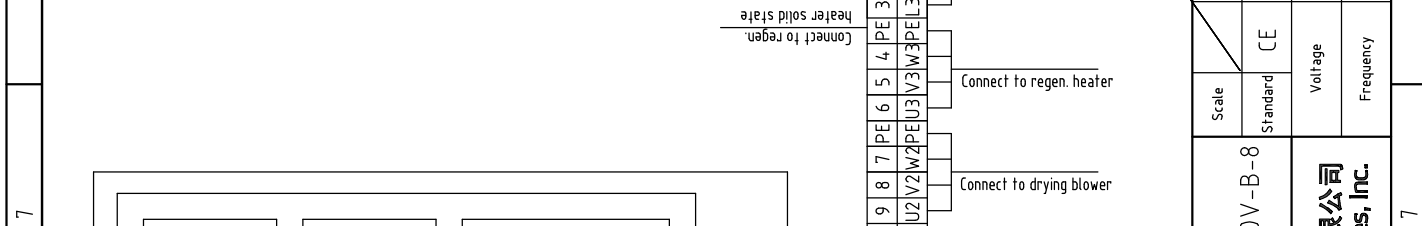
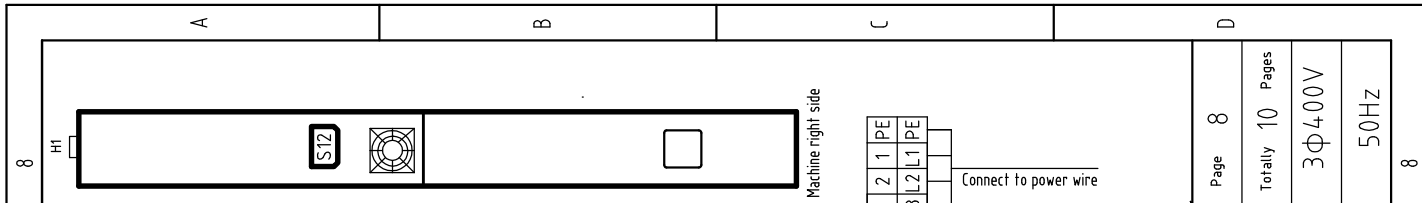
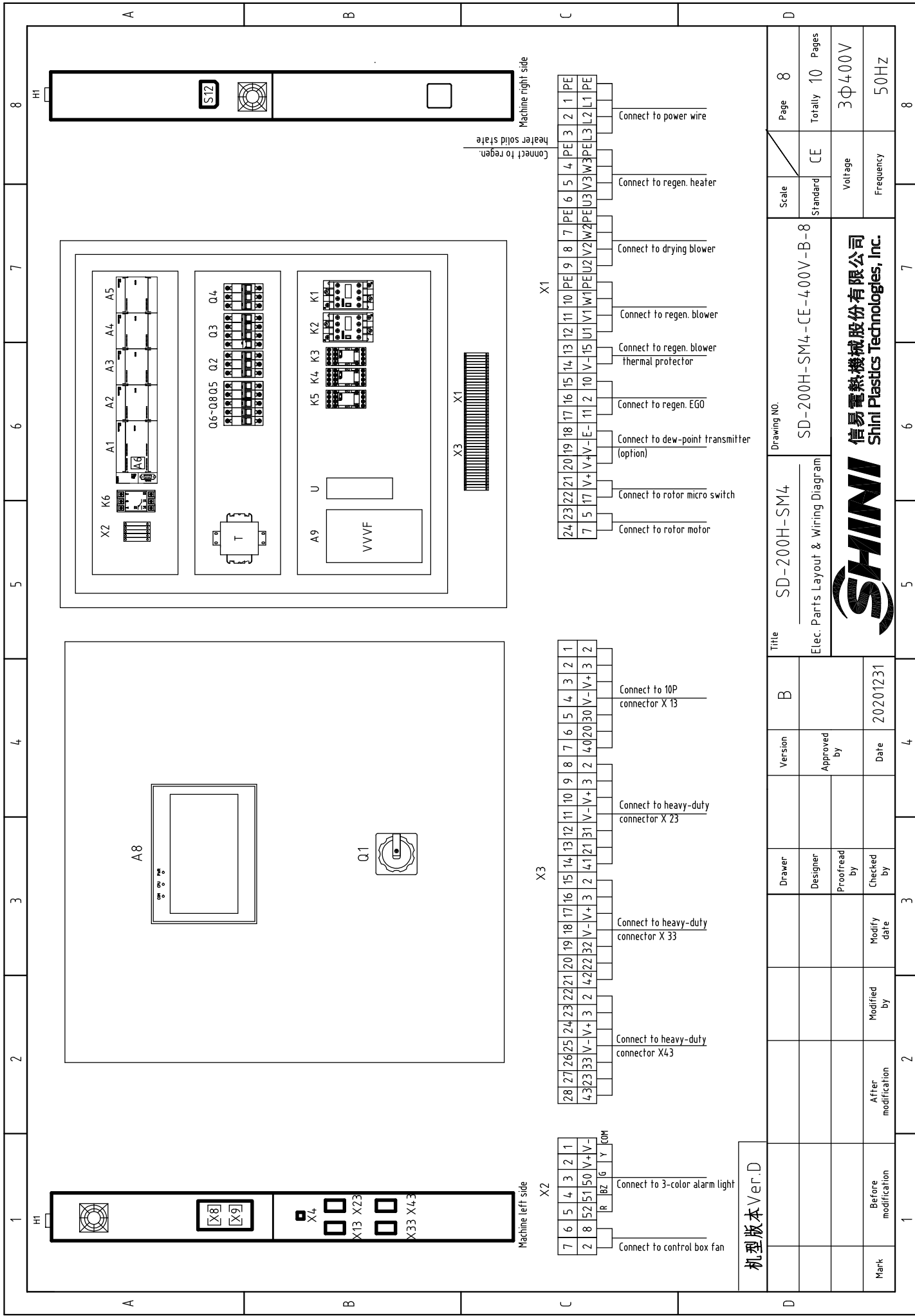
4# hopper 10P heavy-duty connector X43

机型版本 Ver. D

Mark	Before modification	Modified by	Modify date	3	4	Version	B	Title	SD-200H-SM4 Heavy-duty Wiring Drawing	Drawing NO.	SD-200H-SM4-CE-400V-B-7	Scale	Page
	After modification	Modified by	Modify date									Standard	Totally
												CE	7
												Voltage	3Φ400V
												Frequency	50HZ
													Totally
													10
													Pages
													8



信易电热机械股份有限公司
Shini Plastics Technologies, Inc.



Machine left side	Machine right side	Scale	Page 8
Connect to regen. heater solid state	Connect to power wire	Standard	Totally 10 Pages
Connect to regen. heater	Connect to regen. heater	Voltage	3Φ400V
Connect to drying blower	Connect to regen. blower	Frequency	50Hz
Connect to regen. blower thermal protector	Connect to regen. blower thermal protector		
Connect to regen. EGO	Connect to regen. EGO		
Connect to dew-point transmitter (option)	Connect to dew-point transmitter (option)		
Connect to rotor micro switch	Connect to rotor micro switch		
Connect to rotor motor	Connect to rotor motor		

机型版本 Ver.D

Title		Drawing NO.	
SD-200H-SM4	SD-200H-SM4-CE-400V-B-8	Page	8
Elec. Parts Layout & Wiring Diagram		Standard	CE
信易電熱機械股份有限公司 Shini Plastics Technologies, Inc.		Voltage	
		Frequency	
		3Φ400V	
		50Hz	
		8	
		7	
		6	
		5	
		4	
		3	
		2	
		1	

Version	B	Date	20201231
Approved by		Checked by	
Proofread by		Modify date	
Designer		Modified by	
Drawer		After modification	

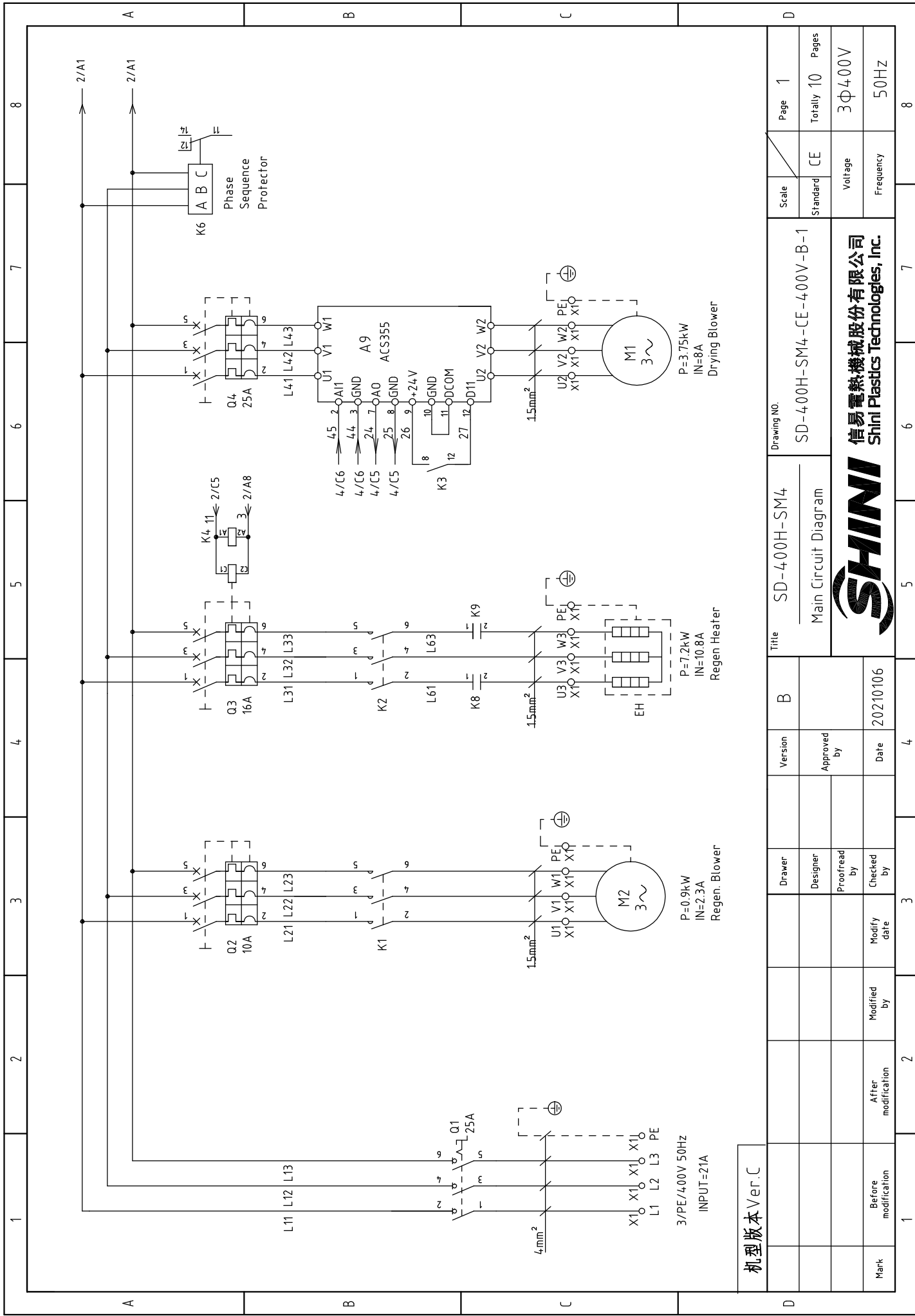
1		2		3		4		5		6		7		8																																																																									
No.	Symbol	Name	Manufacturer	Type	Specification	Number	Material number	Remark																																																																															
1	Q1	Main power switch	EATON	TO-2-1/EA/SVB	20A	1	YE10021160000																																																																																
2	Q2	Circuit breaker	TECO	BM-63C/3006S	6A	1	YE40300603000																																																																																
3		Release	YIJIN	MX	AC24V	1	YE40024000000																																																																																
4	Q3 Q4	Circuit breaker	TECO	BM-63C/3010S	10A	2	YE40301003000																																																																																
5	Q5	Circuit breaker	TECO	BM-63C/2003S 2P	3A	1	YE40200203000																																																																																
6	Q6	Circuit breaker	TECO	BM-63C/1006S 1P	6A	1	YE40100600100																																																																																
7	Q7 Q8	Circuit breaker	TECO	BM-63C/1003S 1P	3A	2	YE40100203000																																																																																
8	K1 K2	Contactors	SIEMENS	3RT6015-1AB01	AC24V 50/60Hz	2	YE00601502500																																																																																
9	K3	Middle relay	HONEYWELL	GR-4C-DC24V	DC24V	1	YE03042400500																																																																																
10	K4	Middle relay	HONEYWELL	GR-2C-AC24V	AC24V 50/60Hz	1	YE03022400300																																																																																
11	K5	Middle relay	HONEYWELL	DRM270024LT	DC24V	1	YE03272400000																																																																																
12	K6	Phase sequence protector	CHAOSHI	ABJ2-12W/380V	400V 50/60Hz	1	YE03103800000																																																																																
13	K8 K9	Solid-state relay	FOTEK	KSR-40DA-H	40A/480VAC/4-32VDC	2	YE03404003200																																																																																
14	T	Mutual transformer	JIUXIN	IN=400V OUT=230V/24V	800mA/230VA	1	YE70040004100																																																																																
15	A1	PLC programmable controller	SIEMENS	CPU ST60 DC/DC/DC	24VDC	1	YE90662000100																																																																																
16	A2	Thermocouple module	SIEMENS	EM AT04	24VDC	1	YE82000400300																																																																																
17	A3	Extension module	SIEMENS	EM AE04	24VDC	1	YE82000400100																																																																																
18	A4	Extension module	SIEMENS	EM AM06	24VDC	1	YE90420600000																																																																																
19	A5	Extension module	SIEMENS	EM AQ04	24VDC	1	YE82000400200																																																																																
20	A6	Extension module	SIEMENS	SB CM01	24VDC	1	YE90048501300																																																																																
21	A8	Human machine interface	SIEMENS	SMART 1000	24VDC	1	YE80024000000																																																																																
22	A9	Frequency inverter	ABB	ACS355-03E-04A1-4	400V 0.75kW	1	YE75350300100																																																																																
23		Frequency controller	ABB	J404	----	1	YE81040400000																																																																																
24	U	DC Power	---	S-100-24	OUT=DC24V 4.5A	1	YE71102400000																																																																																
25	H1	Alarm indicator	SHINI	SWI-P-AC/DC24(三色优先级)	24V AC/DC	1	BL90002401520	(1)																																																																															
机型版本 Ver.D																																																																																							
Notes: (1)Means it's not the material inside the control box. (2) Dew-point transmitter;																																																																																							
<table border="1"> <tr> <td colspan="2">Title</td> <td colspan="2">Drawing No.</td> <td colspan="2">Page</td> </tr> <tr> <td colspan="2">SD-200H-SM4</td> <td colspan="2">SD-200H-SM4-CE-4.00V-B-9</td> <td colspan="2">9</td> </tr> <tr> <td colspan="2">Elec. Parts List 1</td> <td colspan="2">CE</td> <td colspan="2">10</td> </tr> <tr> <td colspan="2">Version</td> <td colspan="2">Approved by</td> <td colspan="2">Voltage</td> </tr> <tr> <td colspan="2">B</td> <td colspan="2"></td> <td colspan="2">3Φ400V</td> </tr> <tr> <td colspan="2">Designer</td> <td colspan="2">Date</td> <td colspan="2">Frequency</td> </tr> <tr> <td colspan="2">Proofread by</td> <td colspan="2">20201231</td> <td colspan="2">50Hz</td> </tr> <tr> <td colspan="2">Checked by</td> <td colspan="2"></td> <td colspan="2"></td> </tr> <tr> <td colspan="2">Modified by</td> <td colspan="2">Modify date</td> <td colspan="2"></td> </tr> <tr> <td colspan="2">After modification</td> <td colspan="2"></td> <td colspan="2"></td> </tr> <tr> <td colspan="2">Before modification</td> <td colspan="2"></td> <td colspan="2"></td> </tr> <tr> <td colspan="2">Mark</td> <td colspan="2"></td> <td colspan="2"></td> </tr> </table>																Title		Drawing No.		Page		SD-200H-SM4		SD-200H-SM4-CE-4.00V-B-9		9		Elec. Parts List 1		CE		10		Version		Approved by		Voltage		B				3Φ400V		Designer		Date		Frequency		Proofread by		20201231		50Hz		Checked by						Modified by		Modify date				After modification						Before modification						Mark					
Title		Drawing No.		Page																																																																																			
SD-200H-SM4		SD-200H-SM4-CE-4.00V-B-9		9																																																																																			
Elec. Parts List 1		CE		10																																																																																			
Version		Approved by		Voltage																																																																																			
B				3Φ400V																																																																																			
Designer		Date		Frequency																																																																																			
Proofread by		20201231		50Hz																																																																																			
Checked by																																																																																							
Modified by		Modify date																																																																																					
After modification																																																																																							
Before modification																																																																																							
Mark																																																																																							
D		D		D																																																																																			
1		2		3																																																																																			
4		5		6																																																																																			
7		8																																																																																					



1		2		3		4		5		6		7		8	
No.	Symbol	Name	Manufacturer	Type	Specification	Number	Material number	Remark							
26	S4	Overheat protector	TONGBAO	WR-A-50-300-1000-3	250V 5(4)A	1	----	(1)							
27	S5	Micro switch	----	----	----	1	----	(1)							
28	S6 S7	Thermocouple	SHINI	K TYPE	----	2	----	(1)							
29	S10	Dew-point transmitter	VAISALA	DMT141	POWER=24VDC 4-20mA	1	YE90014100100	(1) (2)							
30	S12	Communication interface board RS-485 (double Dsub-9pin connector)	YUYUN	----	----	1	YE90048501200								
31		Shell RS485(SAL-700G-A-19)ver.0	BINCHEG	----	----	1	YR400485000000								
32		Super-5 network jumper	----	2M	BA	1	YE90000201600								
33	X1 X2 X3	Terminal Board	HONEYWELL	SK4.0	4.0mm ²	14	YE60000403200								
34		Terminal Board	HONEYWELL	GK4.0	4.0mm ² PE	4	YE60000403500								
35		Terminal Board	HONEYWELL	SK2.5	2.5mm ²	4-5	YE60002503200								
36		Terminal fittings	HONEYWELL	E	GK	5	YE60000003900								
37	X4	Heavy-duty connector	HARTING	5P+PE(plug+socket)Han	Q5/0-M/F(without PG11)	1	YE68000501200	(1)							
38	X13 X23 X33 X43	Heavy-duty connector	HARTING	10P+PE(plug+socket) Han	E-10M/F(without PG16)	4	YE68001001300	(1)							
39	FM	Fan	SHINI	----	24V 50/60Hz	1	----	(1)							
40	M1	Drying blower	SHINI	----	400V 50Hz 1.5kW	1	----	(1)							
41	M2	Regen. blower	SHINI	----	400V 50Hz 0.4kW	1	----	(1)							
42	EH	Heater	SHINI	----	400V 50Hz 4KW	1	----	(1)							
C															
D															
机型版本 Ver.D															
Notes: (1)Means it's not the material inside the control box. (2) Dew-point option;															
		Drawer		Version		B		Title		SD-200H-SM4		Drawing No.		Page 10	
		Designer		Approved by				Elec. Parts List 2		SD-200H-SM4-CE-400V-B-9		Standard		CE	
		Proofread by		Date		20201231				Voltage		Frequency		3Φ400V 50Hz	
Mark		Before modification		Modified by		Modify date									
1		2		3		4		5		6		7		8	

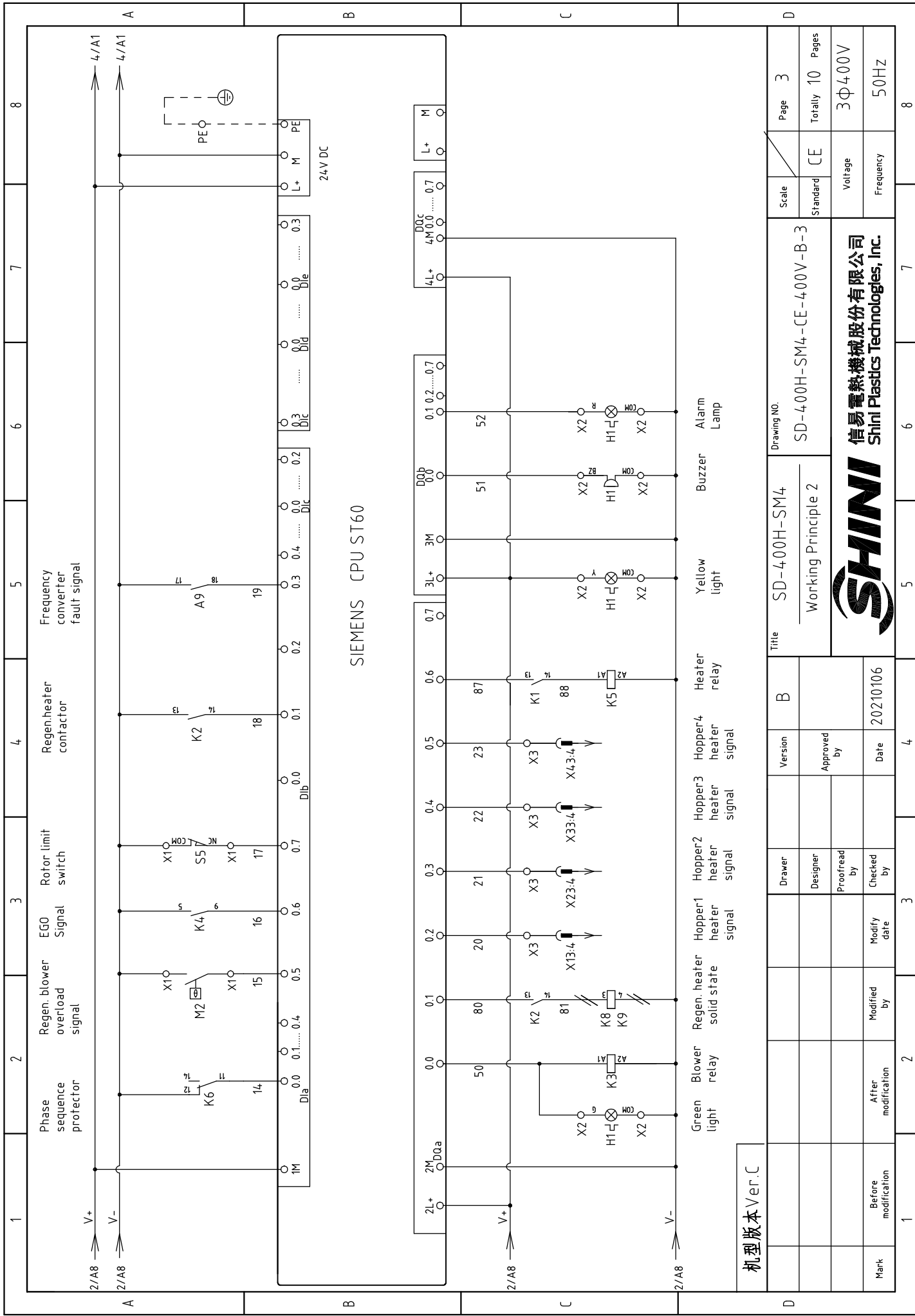


信易電熱機械股份有限公司
Shini Plastics Technologies, Inc.



机型版本 Ver.C

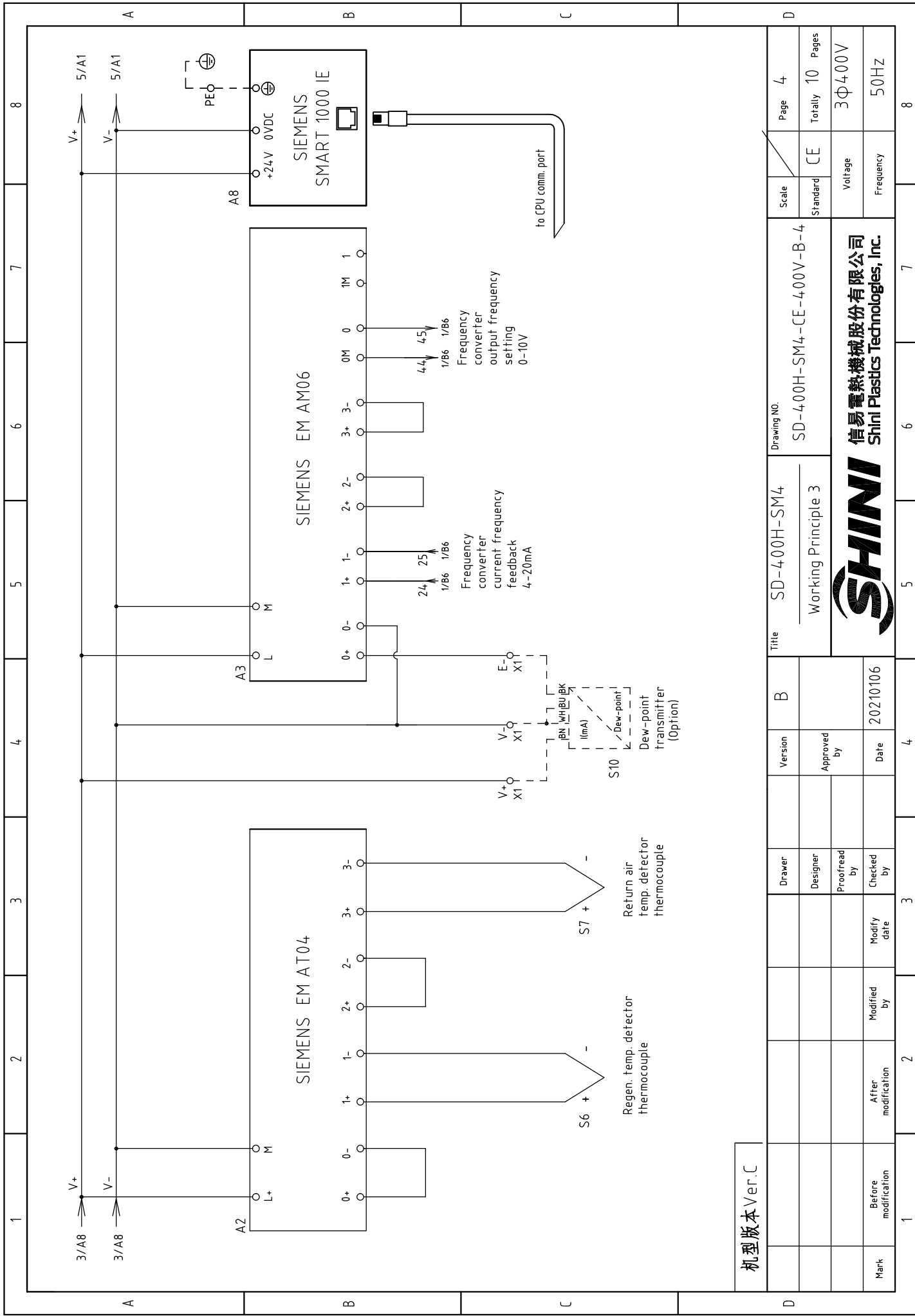
Mark	Before modification	Modified by	Modify date	Checked by	Date	Approved by	Version	B	Title	Drawing NO.	Scale	Page 1
	After modification	Modified by	Modify date								Standard	Totally 10
<p>SD-400H-SM4-CE-400V-B-1</p> <p>Main Circuit Diagram</p> <p>SHINI 信易电热机械股份有限公司 Shini Plastics Technologies, Inc.</p>											CE	3φ400V
											Voltage	50Hz
											Frequency	8



机型版本 Ver.C

Title		SD-400H-SM4		Drawing NO.		Page 3	
Version		B		Standard		CE	
Approved by		Working Principle 2		Voltage		3φ400V	
Date		20210106		Frequency		50HZ	
Modified by		Modified by		Totally		10 Pages	
After modification		After modification		Standard		CE	
Before modification		Before modification		Voltage		3φ400V	
Mark		Mark		Frequency		50HZ	
1		2		3		4	
5		6		7		8	

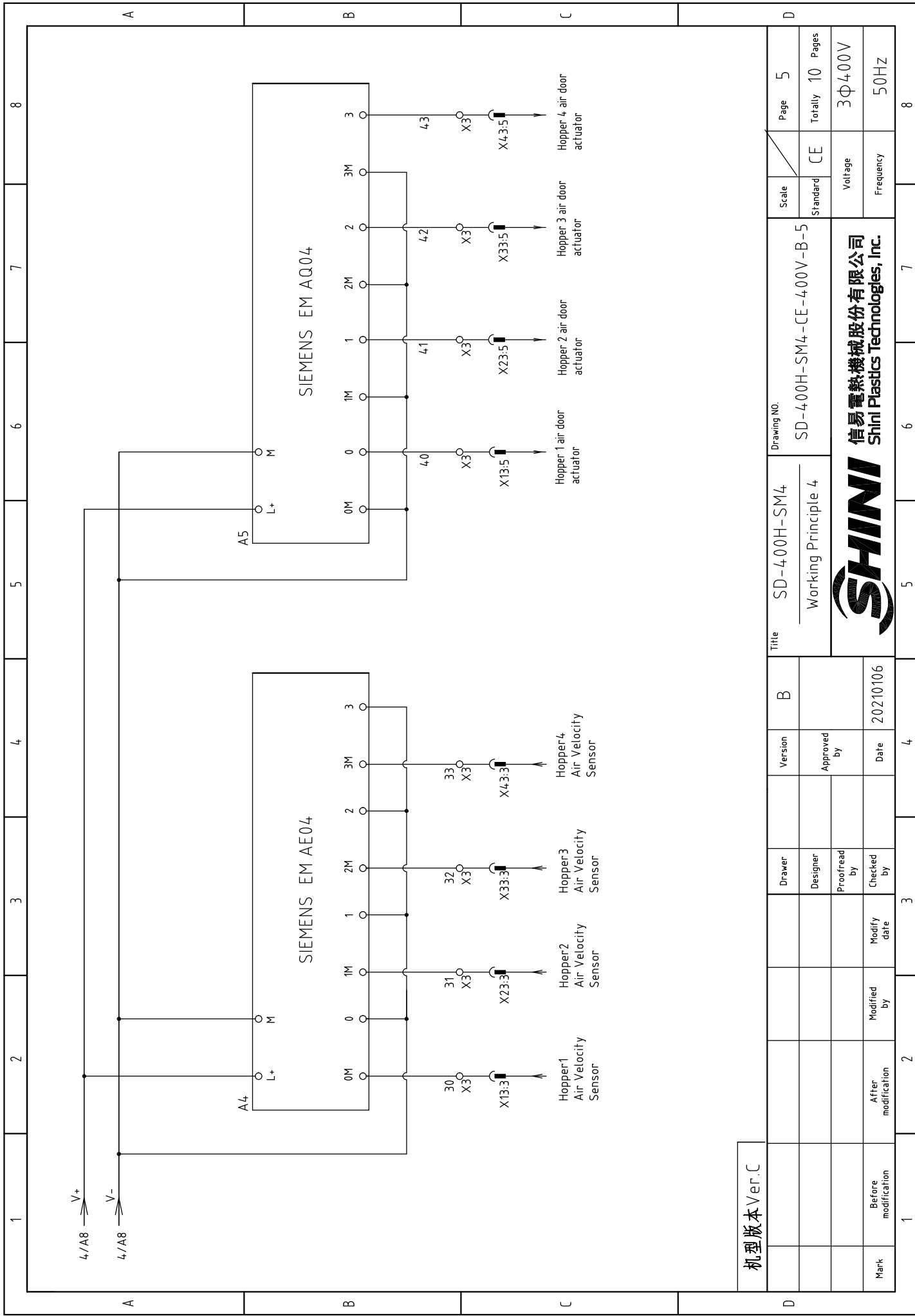




机型版本 Ver.C

Title	SD-400H-SM4		Drawing NO.		Page 4	
	Working Principle 3		SD-400H-SM4-CE-400V-B-4		Totally 10 Pages	
Version	B		Standard	CE		Voltage
Approved by						Frequency
Date	20210106					3Φ400V
Drawer						50HZ
Designer						
Proofread by						
Checked by						
Modify date						
Modified by						
After modification						
Before modification						
Mark						



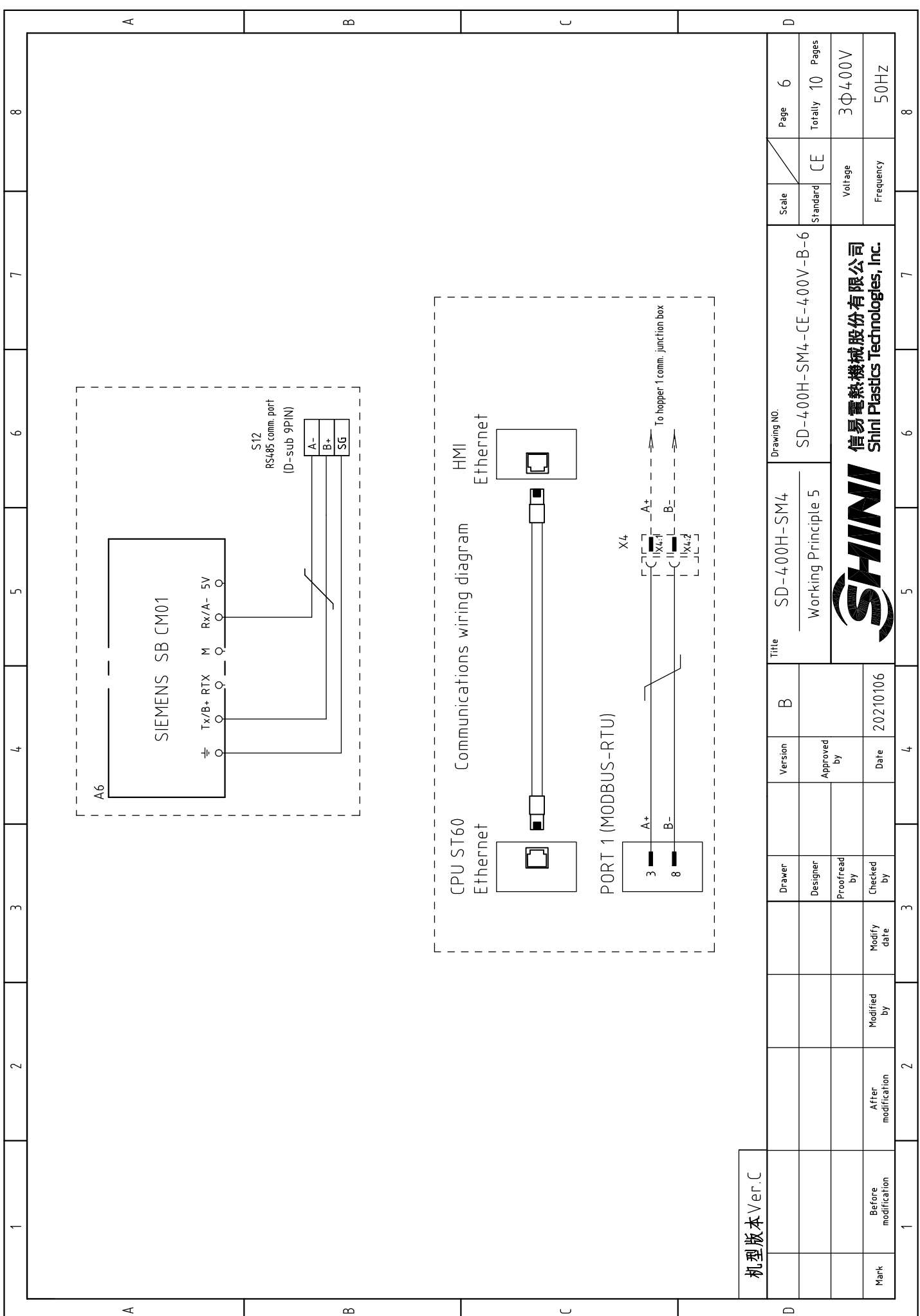


机型版本 Ver C

Mark	Before modification	Modified by	Modify date	Checked by	Date
					20210106
	After modification	Modified by	Modify date	Checked by	
		Proofread by		Approved by	
		Designer			
		Drawer		Version	B

Title		SD-400H-SM4		Drawing NO.	
Working Principle 4		SD-400H-SM4-CE-400V-B-5		Scale	
				Standard	
				Voltage	
				Frequency	
				Page	
				Totally	
				Pages	
				3Φ400V	
				50HZ	





1 2 3 4 5 6 7 8

A B C D

机型版本 Ver.C	
Mark	Before modification
	Modified by
	Modify date
	Checked by
	Proofread by
	Designer
	Approved by
	Date
	Version
	B
	SD-400H-SM4
	Working Principle 5
	SD-400H-SM4-CE-400V-B-6
	CE
	Standard
	Scale
	Page 6
	Totally 10 Pages
	3Φ400V
	50HZ
	Frequency
	Voltage
	8

SHINI
信易電熱機械股份有限公司
Shini Plastics Technologies, Inc.

1 2 3 4 5 6 7 8

A B C D

A A B C D

No.	Function	Description
1	V+	DC24V power
2	V-	
3	30	Air velocity sensor signal
4	20	Drying heater heating signal
5	4.0	Actuator action signal
6		
7		
8		
9	2	controller AC24V power
10	3	

①	V+	⑥
②	V-	⑦
③	30	⑧
④	20	⑨
⑤	4.0	⑩
		2
		3

1# hopper 10P heavy-duty connector X13

1	V+	DC24V power
2	V-	
3	31	Air velocity sensor signal
4	21	Drying heater heating signal
5	4.1	Actuator action signal
6		
7		
8		
9	2	controller AC24V power
10	3	

①	V+	⑥
②	V-	⑦
③	31	⑧
④	21	⑨
⑤	4.1	⑩
		2
		3

2# hopper 10P heavy-duty connector X23

No.	Function	Description
1	V+	DC24V power
2	V-	
3	32	Air velocity sensor signal
4	22	Drying heater heating signal
5	4.2	Actuator action signal
6		
7		
8	2	controller AC24V power
9	3	
10		

①	V+	⑥
②	V-	⑦
③	32	⑧
④	22	⑨
⑤	4.2	⑩
		2
		3

3# hopper 10P heavy-duty connector X33

1	V+	DC24V power
2	V-	
3	33	Air velocity sensor signal
4	23	Drying heater heating signal
5	4.3	Actuator action signal
6		
7		
8	2	controller AC24V power
9	3	
10		

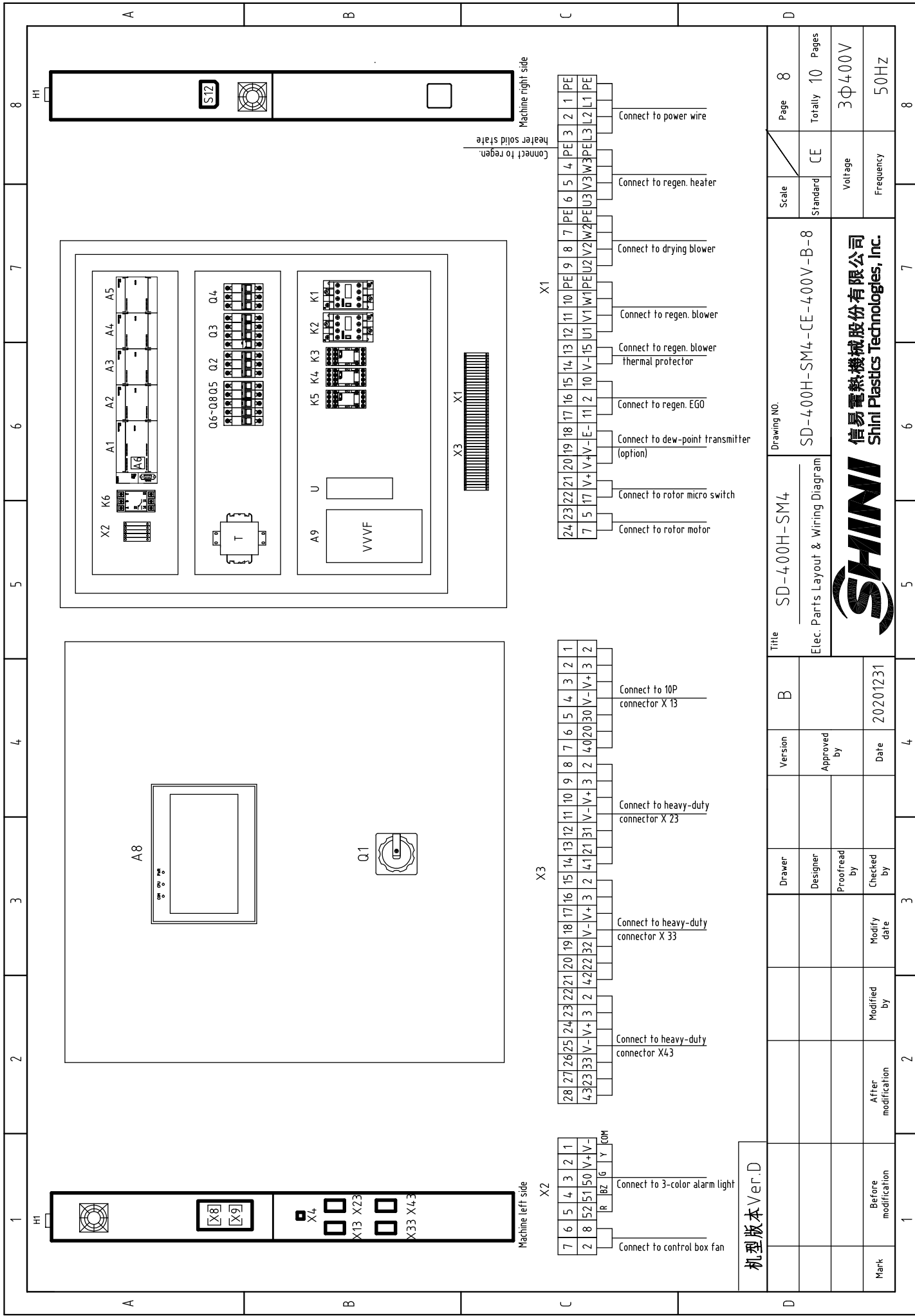
①	V+	⑥
②	V-	⑦
③	33	⑧
④	23	⑨
⑤	4.3	⑩
		2
		3

4# hopper 10P heavy-duty connector X43

机型版本 Ver.D

Mark	Before modification	Modified by	Modify date	Checked by	Date	Version	B	Title	Drawing NO.	Scale	Page
	After modification	Modified by	Modify date	Checked by	20201231						7
SD-400H-SM4 Heavy-duty Wiring Drawing										CE	Totally 10
SD-400H-SM4-CE-400V-B-7										Voltage	3Φ400V
										Frequency	50Hz





1	2	3	4	5	6	7	8
---	---	---	---	---	---	---	---

A	B	C	D
---	---	---	---

Machine left side	Machine right side
-------------------	--------------------

Connect to power wire	Connect to regen. heater	Connect to drying blower	Connect to regen. blower	Connect to regen. blower thermal protector	Connect to regen. EGO	Connect to dew-point transmitter (option)	Connect to rotor micro switch	Connect to rotor motor
-----------------------	--------------------------	--------------------------	--------------------------	--	-----------------------	---	-------------------------------	------------------------

24	23	22	21	20	19	18	17	16	15	14	13	12	11	10	9	8	7	6	5	4	3	2	1
PE	PE	PE	PE	PE	PE	PE	PE	PE	PE	PE	PE	PE	PE	PE	PE	PE	PE	PE	PE	PE	PE	PE	PE

7	6	5	4	3	2	1
V+	V+	V+	V+	V+	V+	V+

28	27	26	25	24	23	22	21	20	19	18	17	16	15	14	13	12	11	10	9	8	7	6	5	4	3	2	1
V-	V-	V-	V-	V-	V-	V-	V-	V-	V-	V-	V-	V-	V-	V-	V-	V-	V-	V-	V-	V-	V-	V-	V-	V-	V-	V-	V-

4	3	2	1
V+	V+	V+	V+

7	6	5	4	3	2	1
R	B	G	Y	COM		

Machine left side	Machine right side
-------------------	--------------------

机型版本 Ver.D

Title SD-400H-SM4 Elec. Parts Layout & Wiring Diagram	Drawing NO. SD-400H-SM4-CE-400V-B-8	Scale	Page 8
		Standard CE	Totally 10 Pages
Voltage 3φ400V	Frequency 50Hz	8	


SHINI
信易電熱機械股份有限公司
Shini Plastics Technologies, Inc.

Version	Approved by	Date
20201231		

Mark	Before modification	After modification	Modified by	Modify date	Checked by	Proofread by	Designer	Drawer
------	---------------------	--------------------	-------------	-------------	------------	--------------	----------	--------

1		2		3		4		5		6		7		8		
NO.	Symbol	Name	Manufacturer	Type	Specification	Number	Material number	Remark								
1	Q1	Main power switch	EATON	P1-25/EA/SVB/25A	25A	1	YE10125250000									
2	Q2	Circuit breaker	TECO	BM-63C/3010S	10A	1	YE403010030000									
3		Release	YIJIN	MX	AC24V	1	YE400240000000									
4	Q3	Circuit breaker	TECO	BM-63C/3016S	16A	1	YE403016030000									
5	Q4	Circuit breaker	TECO	BM-63C/3025S	25A	1	YE403025030000									
6	Q5	Circuit breaker	TECO	BM-63C/2003S 2P	3A	1	YE402002030000									
7	Q6	Circuit breaker	TECO	BM-63C/1006S 1P	6A	1	YE401006001000									
8	Q7 Q8	Circuit breaker	TECO	BM-63C/1003S 1P	3A	2	YE401002030000									
9	K1 K2	Contactors	SIEMENS	3RT6015-1AB01	AC24V 50/60Hz	2	YE006015025000									
10	K3	Middle relay	HONEYWELL	GR-4C-DC24V	DC24V	1	YE030424005000									
11	K4	Middle relay	HONEYWELL	GR-2C-AC24V	AC24V 50/60Hz	1	YE030224003000									
12	K5	Middle relay	HONEYWELL	DRM270024LT	DC24V	1	YE032724000000									
13	K6	Phase sequence protector	CHAOSHI	ABJ2-12W/380V	400V 50/60Hz	1	YE031038000000									
14	K8 K9	Solid-state relay	FOTEK	KSR-40DA-H	40A/480VAC/4-32VDC	2	YE034040032000									
15	T	Mutual transformer	JIUXIN	IN=400V OUT=230V/24V	800mA/230VA	1	YE700400041000									
16	A1	PLC programmable controller	SIEMENS	CPU ST60 DC/DC/DC	24VDC	1	YE906620001000									
17	A2	Extension module	SIEMENS	EM A T04	24VDC	1	YE820004-003000									
18	A3	Extension module	SIEMENS	EM AE04	24VDC	1	YE820004-001000									
19	A4	Extension module	SIEMENS	EM AM06	24VDC	1	YE904206000000									
20	A5	Extension module	SIEMENS	EM A004	24VDC	1	YE820004-002000									
21	A6	Extension module	SIEMENS	SB CM01	24VDC	1	YE900485013000									
22	A8	Human machine interface	SIEMENS	SMART 1000	24VDC	1	YE800240000000									
23	A9	Frequency inverter	ABB	ACS355-03E-08A8-4	400V 4kW	1	YE750884-002000									
24		Frequency controller	ABB	J404	----	1	YE810404000000									
25	U	DC Power	---	S-100-24	OUT=DC24V 4.5A	1	YE711024000000									
机 型 版 本 Ver.C																
Notes: (1)Means it's not the material inside the control box. (2) Dew-point transmitter;																
		Drawer	Designer	Proofread by	Checked by	Modify date	Modified by	After modification								
		Version	Approved by	Date												
		B														
		Title		SD-400H-SM4												
		Drawing NO.		SD-400H-SM4-CE-400V-B-9												
		Elec. Parts List 1														
		Scale														
		Standard		CE												
		Voltage		3Φ400V												
		Frequency		50HZ												
		Page		9												
		Totally		10												
		Pages		8												
Mark		Before modification		Modified by		Modified date		Checked by		Date						
						20210106										



1		2		3		4		5		6		7		8																																																																																	
No.	Symbol	Name	Manufacturer	Type	Specification	Number	Material number	Remark																																																																																							
26	S4	Overheat protector	TONGBAO	WR-A-50-300-1000-3	250V 5(4)A	1	----	(1)																																																																																							
27	S5	Micro switch	----	----	----	1	----	(1)																																																																																							
28	S6 S7	Thermocouple	SHINI	K TYPE	----	2	----	(1)																																																																																							
29	S10	Dew-point transmitter	VAISALA	DMT141	POWER=24VDC 4-20mA	1	YE90014,100100	(1) (2)																																																																																							
30	S12	Communication interface board RS-485 (double Dsub-9pin connector)	YUYUN	----	----	1	YE9004,8501200																																																																																								
31		Shell RS485(SAL-700G-A-19)ver.0	BINCHEG	----	----	1	YR4,004,8500000																																																																																								
32		Super-5 network jumper	----	2M	BA	1	YE900000201600																																																																																								
33	X1 X2 X3	Terminal Board	HONEYWELL	SK4.0	4.0mm ²	14	YE600004,03200																																																																																								
34		Terminal Board	HONEYWELL	GK4.0	4.0mm ² PE	4	YE600004,03500																																																																																								
35		Terminal Board	HONEYWELL	SK2.5	2.5mm ²	45	YE600002503200																																																																																								
36		Terminal fittings	HONEYWELL	E	GK	5	YE60000003900																																																																																								
37	X4	Heavy-duty connector	HARTING	5P+PE(plug+socket)Han	Q5/0-M/F(without PG11)	1	YE68000501200	(1)																																																																																							
38	X13 X23 X33 X43	Heavy-duty connector	HARTING	10P+PE(plug+socket) Han	E-10M/F(without PG16)	4	YE68001001300	(1)																																																																																							
39	FM	Fan	SHINI	----	24V 50/60Hz	1	----	(1)																																																																																							
40	M1	Drying blower	SHINI	----	400V 50Hz 1.5kW	1	----	(1)																																																																																							
41	M2	Regen. blower	SHINI	----	400V 50Hz 0.4kW	1	----	(1)																																																																																							
42	EH	Heater	SHINI	----	400V 50Hz 4KW	1	----	(1)																																																																																							
43	H1	Alarm indicate lamp	SHINI	SWI-P-AC/DC24(3-color piriorty)	24V AC/DC	1	BL900024,01520	(1)																																																																																							
C																																																																																															
D																																																																																															
机型版本 Ver.C																																																																																															
Notes: (1)Means it's not the material inside the control box. (2) Dew-point option;																																																																																															
<table border="1"> <tr> <td colspan="2">Title</td> <td colspan="2">Version</td> <td colspan="2">B</td> <td colspan="2">Drawing NO.</td> <td colspan="2">Scale</td> <td colspan="2">Page</td> <td colspan="2">10</td> <td colspan="2">8</td> </tr> <tr> <td colspan="2">SD-400H-SM4</td> <td colspan="2"></td> <td colspan="2"></td> <td colspan="2">SD-400H-SM4-CE-400V-B-10</td> <td colspan="2">Standard</td> <td colspan="2">CE</td> <td colspan="2">Totally</td> <td colspan="2">10</td> </tr> <tr> <td colspan="2">Elec. Parts List 2</td> <td colspan="2">Approved by</td> <td colspan="2">Date</td> <td colspan="2"></td> <td colspan="2">Voltage</td> <td colspan="2">3Φ400V</td> <td colspan="2">Frequency</td> <td colspan="2">50Hz</td> </tr> <tr> <td colspan="2"></td> <td colspan="2">Proofread by</td> <td colspan="2">20210106</td> <td colspan="2"></td> <td colspan="2"></td> <td colspan="2"></td> <td colspan="2"></td> <td colspan="2"></td> </tr> <tr> <td colspan="2">Mark</td> <td colspan="2">After modification</td> <td colspan="2">Modified by</td> <td colspan="2">Modify date</td> <td colspan="2"></td> <td colspan="2"></td> <td colspan="2"></td> <td colspan="2"></td> </tr> </table>																Title		Version		B		Drawing NO.		Scale		Page		10		8		SD-400H-SM4						SD-400H-SM4-CE-400V-B-10		Standard		CE		Totally		10		Elec. Parts List 2		Approved by		Date				Voltage		3Φ400V		Frequency		50Hz				Proofread by		20210106												Mark		After modification		Modified by		Modify date									
Title		Version		B		Drawing NO.		Scale		Page		10		8																																																																																	
SD-400H-SM4						SD-400H-SM4-CE-400V-B-10		Standard		CE		Totally		10																																																																																	
Elec. Parts List 2		Approved by		Date				Voltage		3Φ400V		Frequency		50Hz																																																																																	
		Proofread by		20210106																																																																																											
Mark		After modification		Modified by		Modify date																																																																																									
 <p>信易電熱機械股份有限公司 Shini Plastics Technologies, Inc.</p>																																																																																															
<table border="1"> <tr> <td colspan="2">1</td> <td colspan="2">2</td> <td colspan="2">3</td> <td colspan="2">4</td> <td colspan="2">5</td> <td colspan="2">6</td> <td colspan="2">7</td> <td colspan="2">8</td> </tr> </table>																1		2		3		4		5		6		7		8																																																																	
1		2		3		4		5		6		7		8																																																																																	