
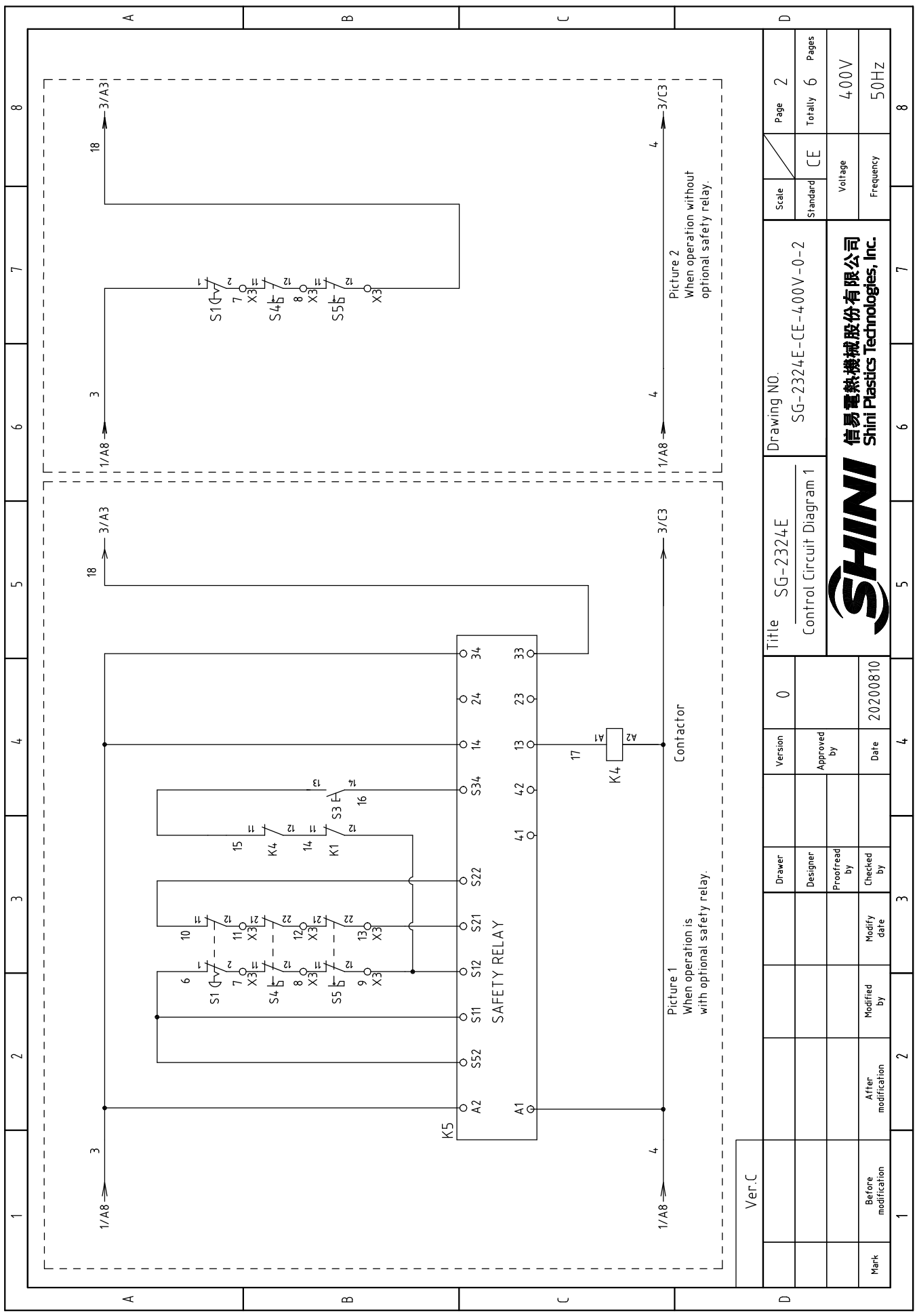


P=5.5 kW
IN=10.3 A
Granulating motor

Ver.C	Title SG-2324E			Drawing NO. SG-2324E-CE-400V-0-1		Scale	Page 1
	Main Circuit Diagram					Standard CE	Totally 6 Pages
Mark	Before modification	Modified by	Modify date	Checked by	Date	Voltage 400V	Frequency 50Hz
			20200810				
			4				
			3				
			0				
			Version				
			Approved by				
			0				
 信易電熱機械股份有限公司 Shini Plastics Technologies, Inc.							



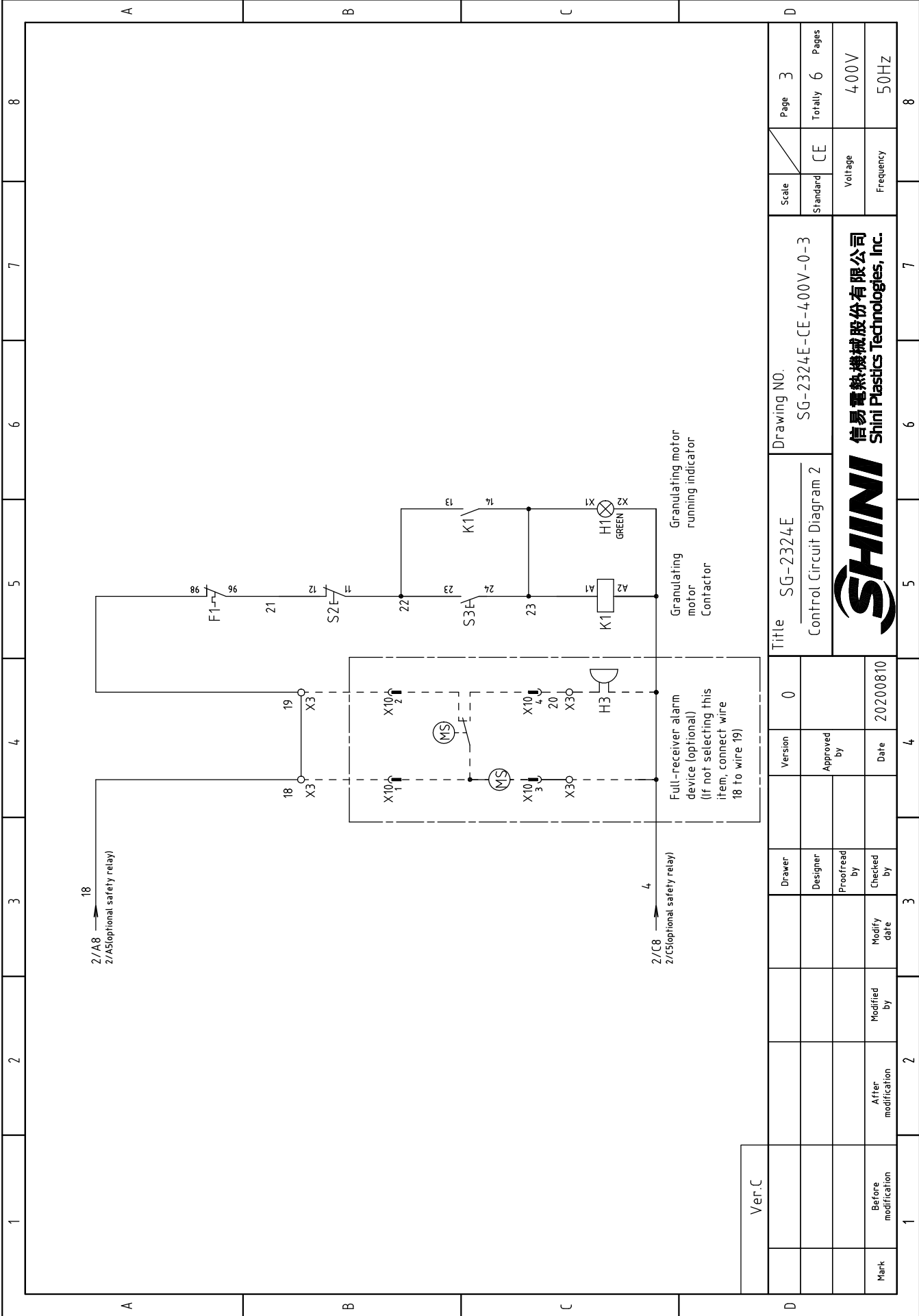
Ver.C	Title SG-2324E				Drawing NO. SG-2324E-CE-400V-0-2		Scale	Page 2
	Control Circuit Diagram 1						Standard CE	Totally 6 Pages
Mark	Before modification	Modified by	Modify date	Approved by	Date	Voltage 400V		Frequency 50HZ
	After modification	Modified by	Modify date	Checked by	Date	Frequency 50HZ		



Picture 2
When operation without optional safety relay.

Picture 1
When operation is with optional safety relay.

1	2	3	4	5	6	7	8
A	B	C	D				



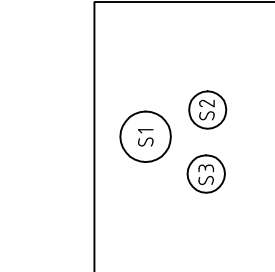
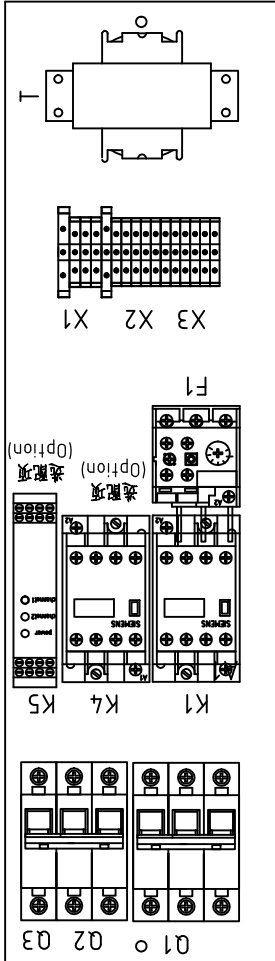
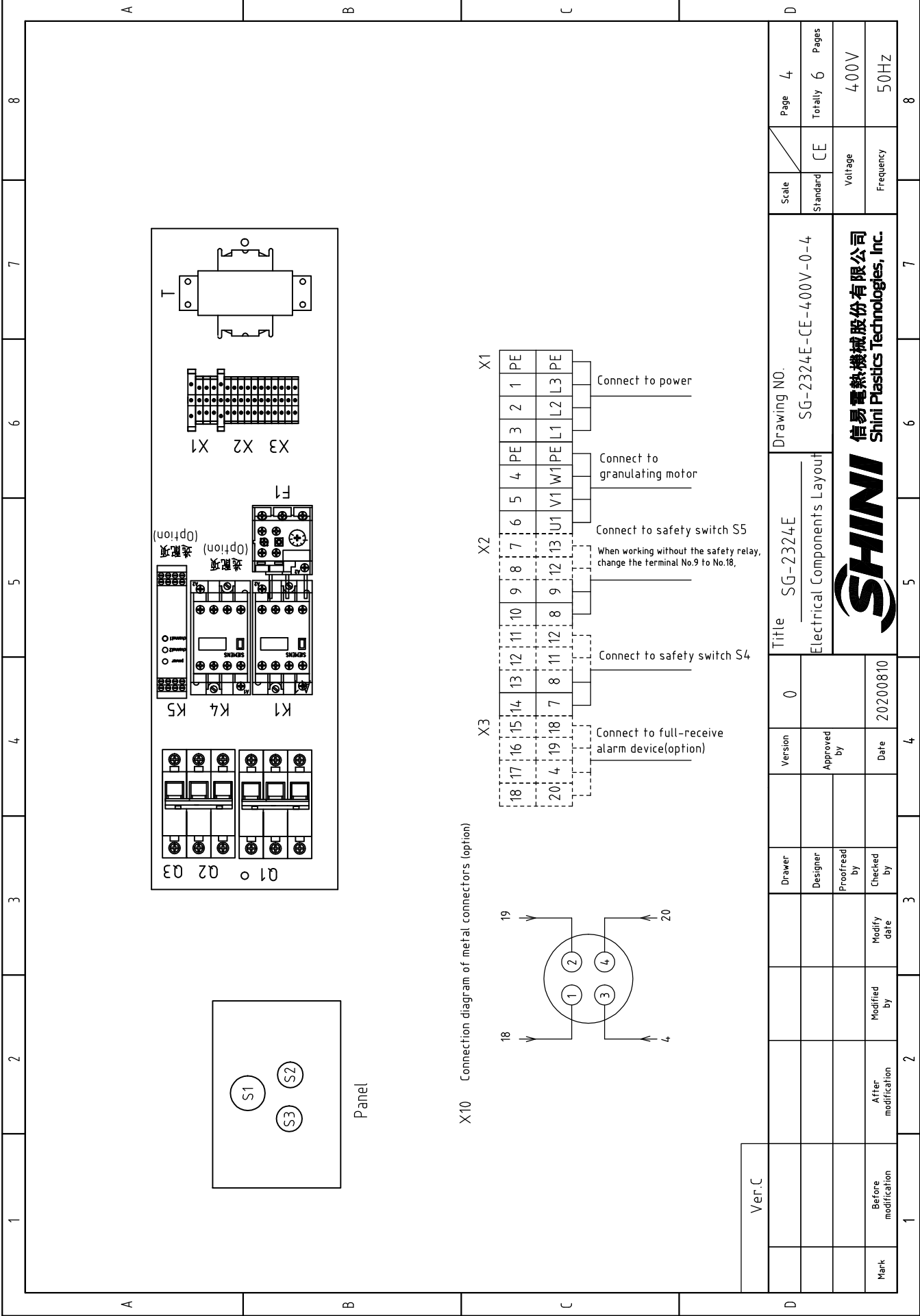
Scale	Page	3
	Totally	6
Standard	CE	
	Voltage	400V
	Frequency	50Hz

Title	Drawing NO.	
	SG-2324E-CE-400V-0-3	
Control Circuit Diagram 2		



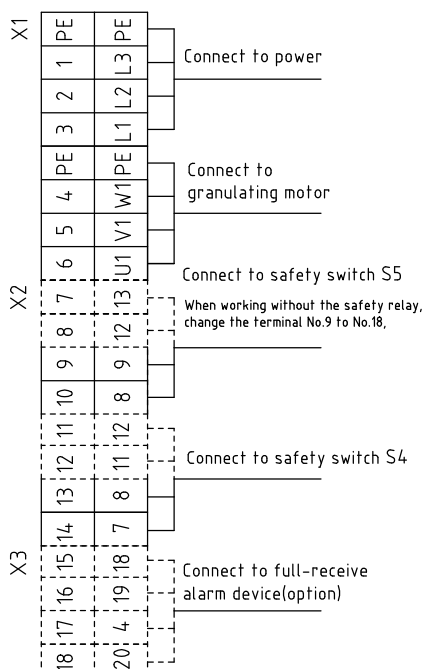
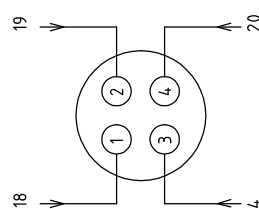
Version	0
Approved by	
Date	20200810

Ver.C									
Mark	Before modification	After modification	Modified by	Modify date	Checked by	Proofread by	Designer	Drawer	



Panel

X10 Connection diagram of metal connectors (option)




Ver.C	Drawer	Version	Title		Drawing NO.		Scale	Page
	Designer	0	SG-2324E		SG-2324E-CE-400V-0-4		Standard	4
Mark	Proofread by	Approved by	Electrical Components Layout				Standard	Totally
	Checked by	Date	20200810				Standard	6
Before modification	Modified by	Modified date					Voltage	Pages
After modification							Frequency	400V
								50HZ
1	2	3	4	5	6	7	8	8



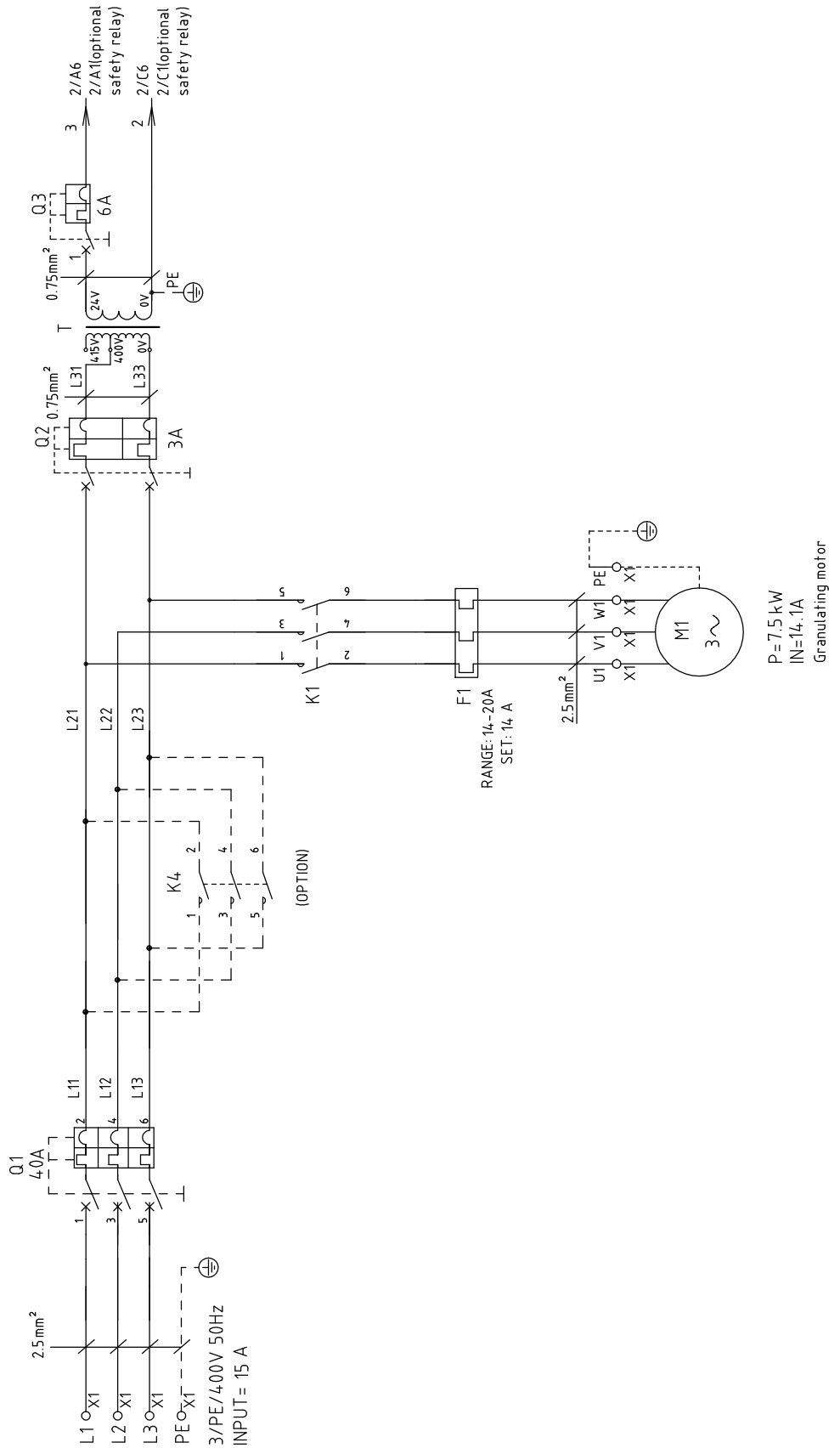
1	2		3	4	5	6	7	8
NO.	Symbol	Name	Manufacturer	Type	Specification	Number	Material number	Remark
1	Q1	Circuit breaker	TECO	BM-63C	25A	1	YE40302503000	
2	Q2	Circuit breaker	TECO	BM-63C	3A	1	YE40200203000	
3	Q3	Circuit breaker	TECO	BM-63C	6A	1	YE40100600100	
4	K1	Contactor	SIEMENS	3RT6018-1AB01	24VAC	1	YE00601802500	
5		Auxiliary contactor	SIEMENS	3RH6911-1HA11	1NO+1NC	1	YE00691100100	(3)
6	K4	Contactor	SIEMENS	3RT6018-1AB02	24VAC	1	YE00601802600	(3)
7	K5	Safety realy	PILZ	PN0Z×2.8P	24V AC/DC	1	YE04023000000	(3)
8	F1	Overload relay	SIEMENS	3RU6116-4AB0	11-16A	1	YE01611640000	Delete
9	F1	Overload relay	SIEMENS	3RU6116-1KB0	9-12.5A	1	YE01169125000	New
10	T	Transformer	BAIYUN	IN=400V OUT=24V	420VA	1	YE70402400700	Delete
11	T	Sensor transformer	BAIYUN	IN=400V/415V OUT=24V	80VA	1	YE70040006500	New
12	X1	Terminal board	HONEYWELL	2.5mm ²	-----	6	YE60002503200	
13	X2	Terminal board	HONEYWELL	2.5mm ² PE	-----	2	YE60002503400	
14	X2	Terminal board	HONEYWELL	2.5mm ²	-----	4	YE60002503200	
15	X3	Terminal board	HONEYWELL	2.5mm ²	-----	4	YE60002503200	(3)
16	X3	Terminal board	HONEYWELL	2.5mm ²	-----	4	YE60002503200	(2)
17	S1	Emergency stop button	SCHNEIDER	XB2BS542C	400VAC	1	YE11254200000	(1)
18	S2	Contact block	SCHNEIDER	ZB2BE102C	1NC	1	YE00210203100	(1)(3)
19	S2	Stop button	SCHNEIDER	XB2BA22C	400VAC	1	YE11222000000	(1)
20	S3,H1	Start button (with light)	SCHNEIDER	XB2BW33M1C	24VAC	1	YE11233100000	(1)
21	S3	Contact block	SCHNEIDER	ZB2BE101C	1NO	1	YE00210103100	(1)(3)
22	S4,S5	Safety switch	SCHMERSRC	AZ15-02ZVRK-1476	AZ-15	2	YE16147600100	(1)
23	S4,S5	Safety switch	SCHMERSRC	AZ16-02ZVRK-1476	AZ-16	2	YE16147600000	(1)(3)
24		Operation parts AZ17-B6	-----	-----	AZ-17	2	YE16176000000	(1)
25	H3	Buzzer	TEND	EA-2	24VAC	1	YE84240200000	(1)(2)

Ver.C		Notes: (1)Means it's not the material inside the control box.(2)Means optional accessories of full-receive alarm device.(3)Stand for optional safety relay.	
1	2	3	4
Mark	Before modification	Modified by	Modify date
			20200810
		Checked by	Date
		Proofread by	
		Designer	Approved by
		Drawer	Version
			0
Title		Drawing NO.	
SG-2324E		SG-2324E	
Electrical Components List 1		SG-2324E-CE-4.00V-0-5	
Standard		Scale	
CE		CE	
Voltage		Page 5	
Frequency		Totally 6 Pages	
400V		50Hz	

 SHINI 信易電熱機械股份有限公司 Shini Plastics Technologies, Inc.		5	6	7	8
		5	6	7	8

1		2		3		4		5		6		7		8	
NO.	Symbol	Name	Manufacturer	Type	Specification	Number	Material number	Remark							
26	MS	Material level switch	SIPAI	SR-80	24VAC	1	YE15802400100	(1)(2)							
27	X10	Metal connector	APEX	PLT-254-PM	4P	1	YE68025400000	(1)(2)							
28	M1	Granulating motor	APEX	PLT-254-RF	4P	1	YE68025400100	(1)(2)							
29			-----	5.5kW	400V 50Hz	1	-----	(1)							
A															
B															
C															
D															
Ver.C Notes: (1)Means it's not the material inside the control box.(2)Means optional accessories of full-receive alarm device. (3)Stand for optional safety relay.															
		Title		Drawing NO.		Scale		Page		Standard		Voltage		Frequency	
		SG-2324E		SG-2324E		SG-2324E-CE-4.00V-0-6		CE		4.00V		50HZ			
		Electrical Components List 2													
		Version		Date		Approved by		Checked by		Modify date		After modification		Modified by	
		0		20200810											
Mark		Before modification		Modified by		After modification		Modified by		Modify date		Checked by		Date	
1															





P=7.5 kW
 IN=14.1A
 Granulating motor

F1
 RANGE: 14-20A
 SET: 14 A

Ver.C
Mark
Before modification
After modification
Modified by
Modify date
Checked by
Proofread by
Designer
Drawer

	Version	0
	Approved by	
	Date	20200810

Title	SG-2336E
Main Circuit Diagram	

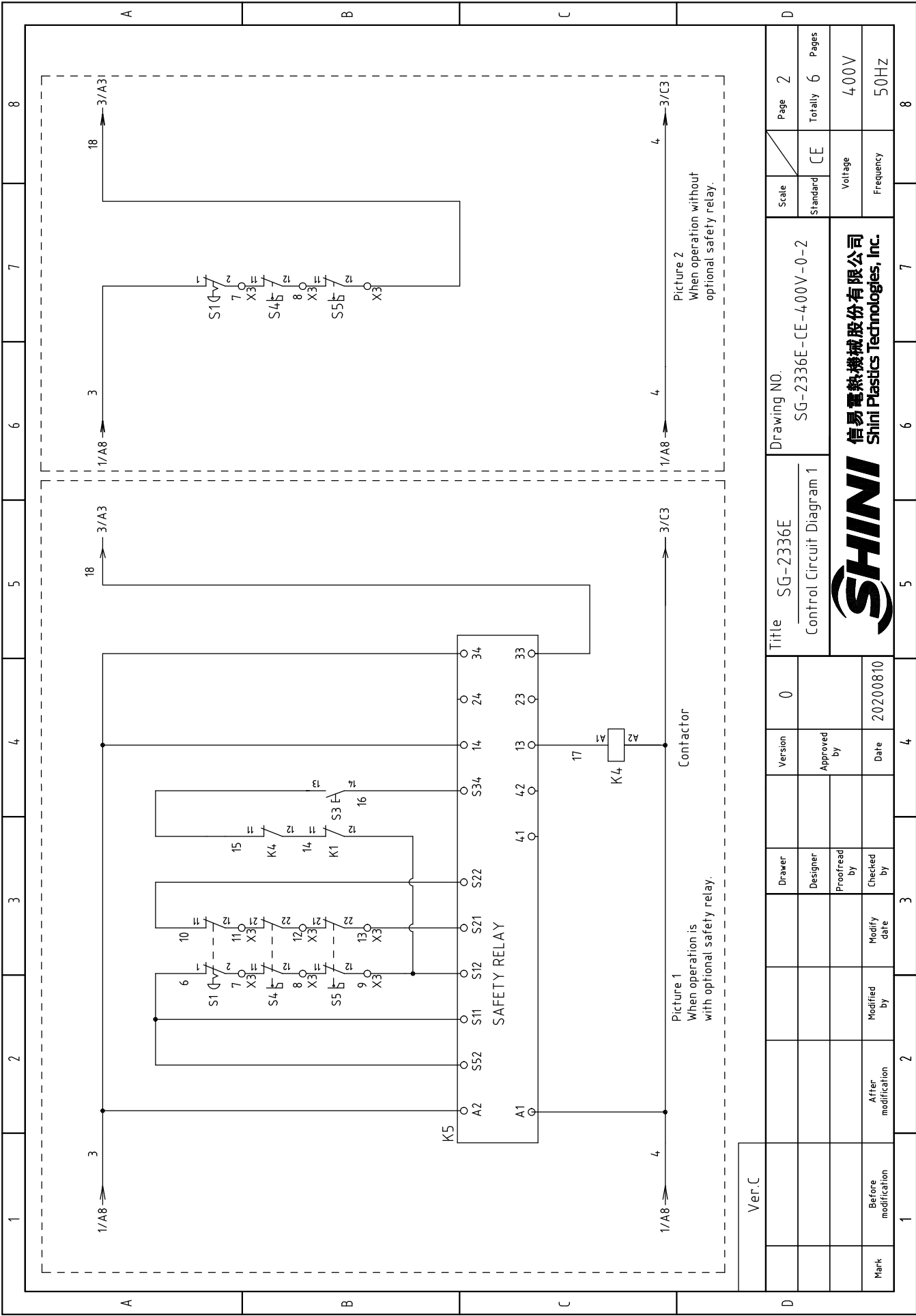
Drawing NO.	SG-2336E-CE-400V-0-1
Standard	CE
Voltage	400V
Frequency	50Hz

Scale	Page 1
Totally	6 Pages

1	2	3	4	5	6	7	8
A	B	C	D	E	F	G	H



1	2	3	4	5	6	7	8
---	---	---	---	---	---	---	---



Picture 1
When operation is
with optional safety relay.

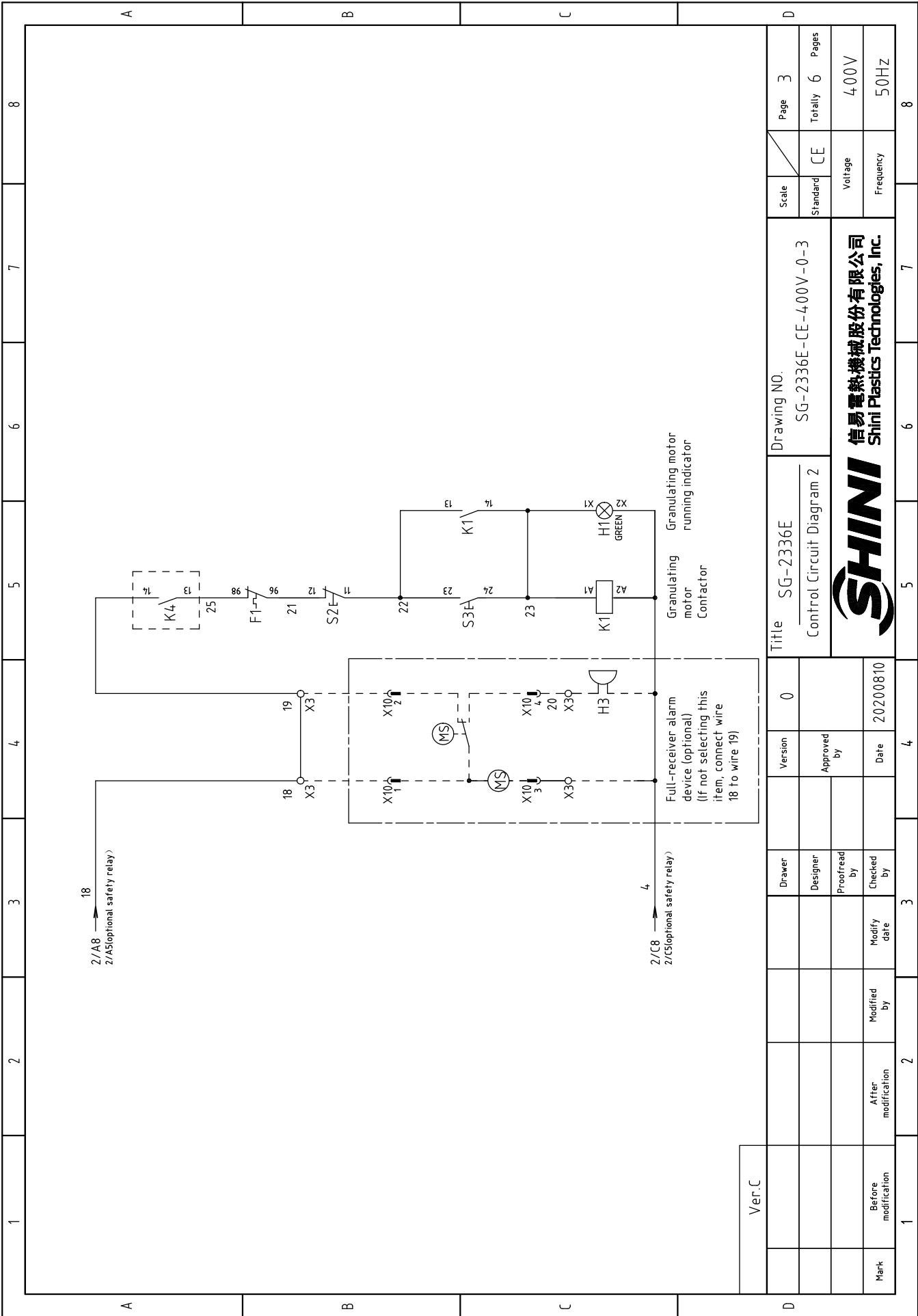
Picture 2
When operation without
optional safety relay.

Mark	Before modification	Modified by	Modify date	Date	20200810
	After modification	Modified by	Modify date		
Ver.C		Designer	Proofread by	Checked by	Date
		Designer	Proofread by		

Version	0
Approved by	
Checked by	
Modified by	
Modify date	
Date	20200810

Title		SG-2336E		Drawing NO.		SG-2336E-CE-400V-0-2	
Control Circuit Diagram 1		Scale	CE	Standard	CE	Totally	6 Pages
Voltage		400V		Frequency		50HZ	
Page		2		Totally		6	





1

2

3

4

5

6

7

8

A

B

C

D

A

B

C

D

Ver.C													
Mark	Before modification	After modification	Modified by	Modify date	Checked by	Proofread by	Designer	Drawer	Version	0	Title SG-2336E Control Circuit Diagram 2		
											Drawing NO. SG-2336E-CE-4.00V-0-3		
											Standard	CE	Scale
													Page 3
													Totally 6 Pages
													Voltage 400V
													Frequency 50Hz

SHINI
信易電熱機械股份有限公司
Shini Plastics Technologies, Inc.

1

2

3

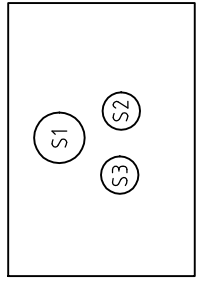
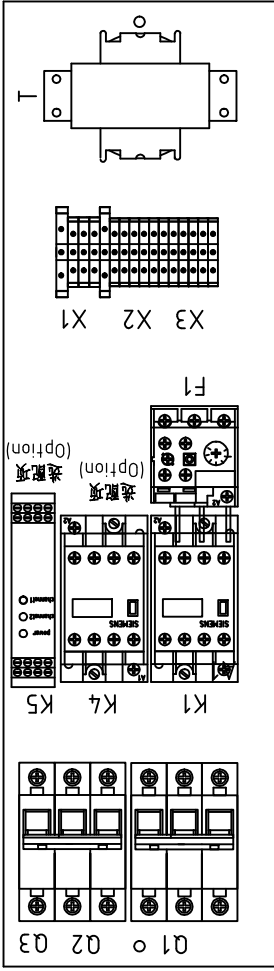
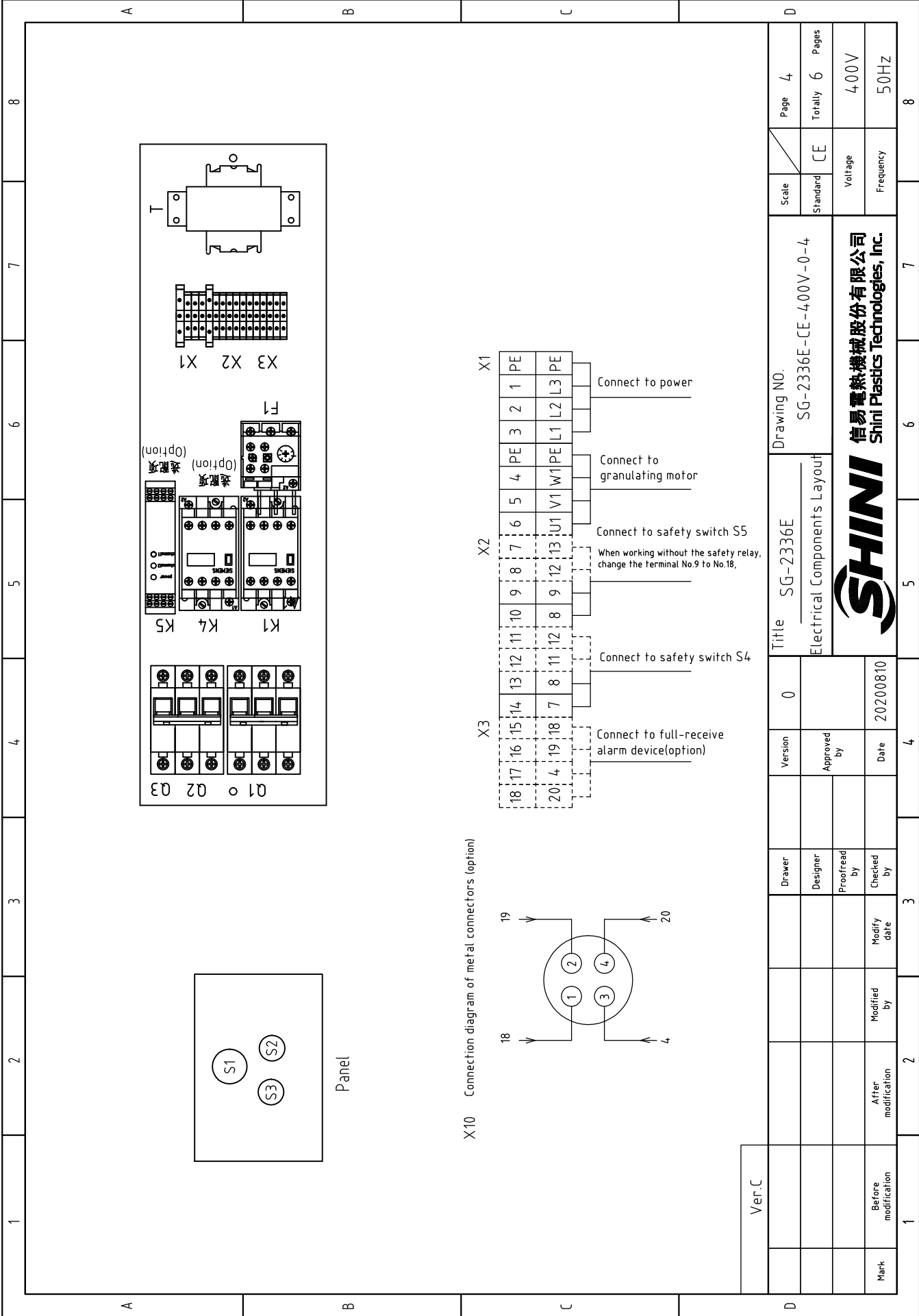
4

5

6

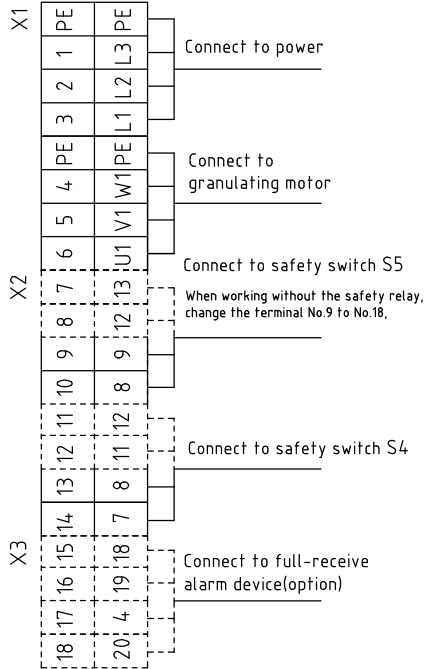
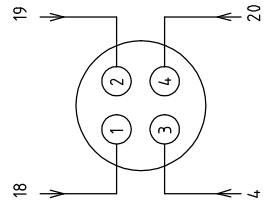
7

8



Panel

X10 Connection diagram of metal connectors (option)



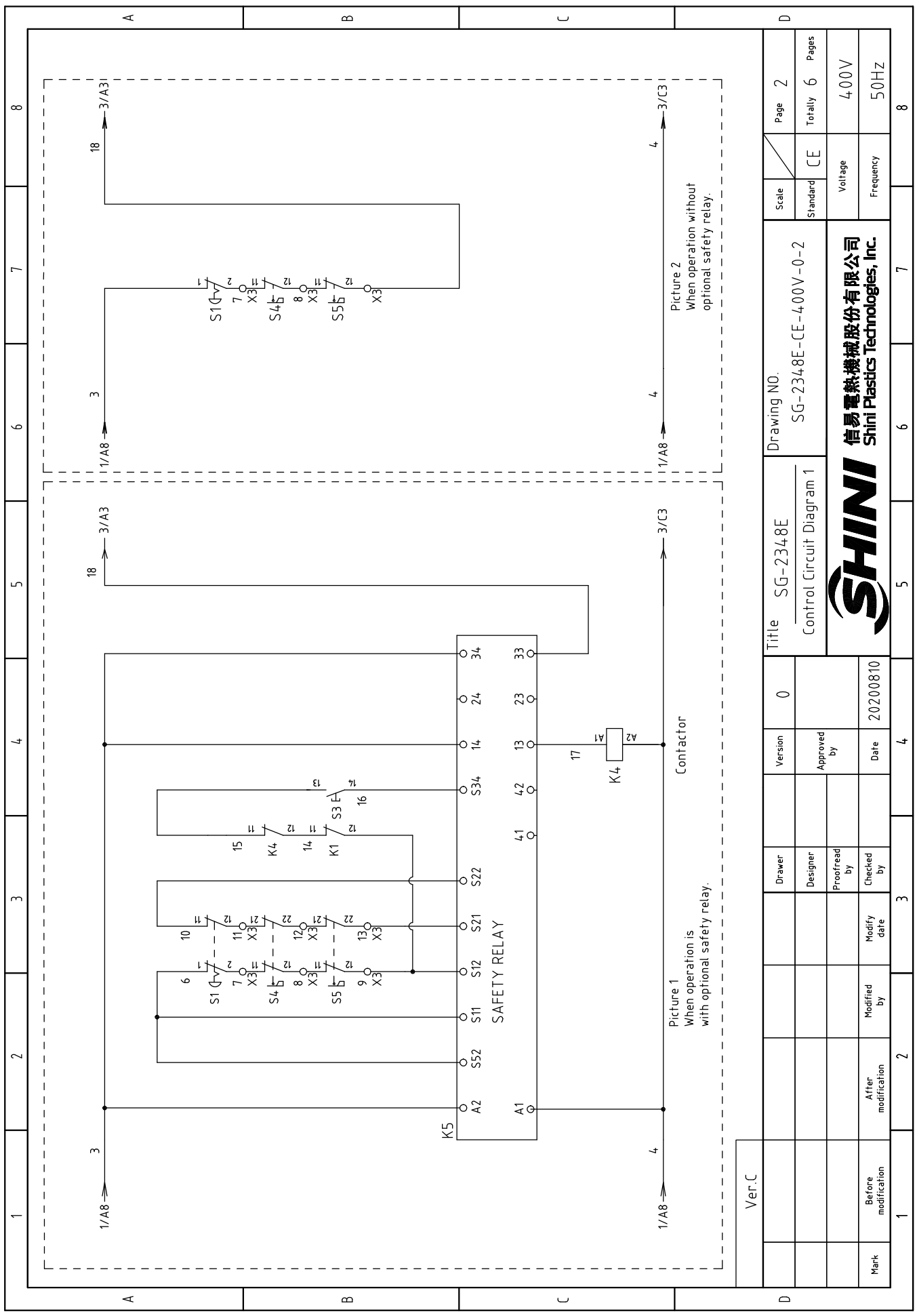
Ver.C	Drawer	Version	Title		Drawing No.		Scale	Page
	Designer	0	SG-2336E		SG-2336E-CE-400V-0-4		Standard	4
Mark	Proofread by	Approved by	Electrical Components Layout		Voltage		Totally	Pages
	Checked by	Date	SHINI		400V		6	6
Before modification	Modified by	20200810	信易电热机械股份有限公司		Frequency		50Hz	
After modification	Modify date	4	SHINI		Shini Plastics Technologies, Inc.		8	

1		2		3		4		5		6		7		8	
NO.	Symbol	Name	Manufacturer	Type	Specification	Number	Material number	Remark							
1	Q1	Circuit breaker	TECO	BM-63/3P	40A	1	YE40304.003000								
2	Q2	Circuit breaker	TECO	BM-63C	3A	1	YE40200203000								
3	Q3	Circuit breaker	TECO	BM-63C	6A	1	YE40100600100								
4	K1	Contact	SIEMENS	3RT6026-1AC20	24VAC	1	YE00602602600								
5	K4	Contact	SIEMENS	3RT6026-1AC20	24VAC	1	YE00602602600	(3)							
6	K5	Safety realy	PILZ	PNOZx2.8P	24 V AC/DC	1	YE04023000000	(3)							
7	F1	Overload relay	SIEMENS	3RU6126-4BB0	14-20A	1	YE01260140000								
8	T	Transformer	BAIYUN	IN=400V-OUT=24V	120VA	1	YE70402400700	Delete							
9	T	Sensor transformer	-----	IN=400V / 4.15V OUT=24V	80VA	1	YE70040006500	New							
10	X1	Terminal board	HONEYWELL	2.5mm ²	-----	6	YE60002503200								
11	X2	Terminal board	HONEYWELL	2.5mm ² PE	-----	2	YE60002503400								
12	X2	Terminal board	HONEYWELL	2.5mm ²	-----	4	YE60002503200								
13	X2	Terminal board	HONEYWELL	2.5mm ²	-----	4	YE60002503200	(3)							
14	X3	Terminal board	HONEYWELL	2.5mm ²	-----	4	YE60002503200	(2)							
15	S1	Emergency stop button	SCHNEIDER	XB2BS542C	400VAC	1	YE11254200000	(1)							
16	S2	Contact block	SCHNEIDER	ZB2BE102C	1NC	1	YE00210203100	(1)(3)							
17	S2	Stop button	SCHNEIDER	XB2BA22C	400VAC	1	YE11222000000	(1)							
18	S3,H1	Start button (with light)	SCHNEIDER	XB2BW33M1C	24VAC	1	YE11233100000	(1)							
19	S3	Contact block	SCHNEIDER	ZB2BE101C	1NO	1	YE00210103100	(1)(3)							
20	S4,S5	Safety switch	SCHMERSRC	AZ15-02ZVRK-1476	AZ-15	2	YE1614.7600100	(1)							
21	S4,S5	Safety switch	SCHMERSRC	AZ16-02ZVRK-1476	AZ-16	2	YE1614.7600000	(1)(3)							
22	S4,S5	Operation parts AZ17-B6	-----	-----	AZ-17	2	YE16176000000	(1)							
23	H3	Buzzer	TEND	EA-2	24VAC	1	YE84240200000	(1)(2)							
24	MS	Material level switch	SIPAI	SR-80	24VAC	1	YE15802400100	(1)(2)							
25	X10	Metal connector	APEX	PLT-254-PM	4P	1	YE68025400000	(1)(2)							
Ver.C		Notes: (1)Means it's not the material inside the control box.(2)Means optional accessories of full-receive alarm device.(3)Stand for optional safety relay.				Drawing NO.		SG-2336E		Scale		Page 5			
		Electrical Components List 1		SG-2336E-CE-4.00V-0-5		Standard		CE		Totally 6		Pages			
Mark		After modification		Date		Voltage		Frequency		4.00V		50HZ			

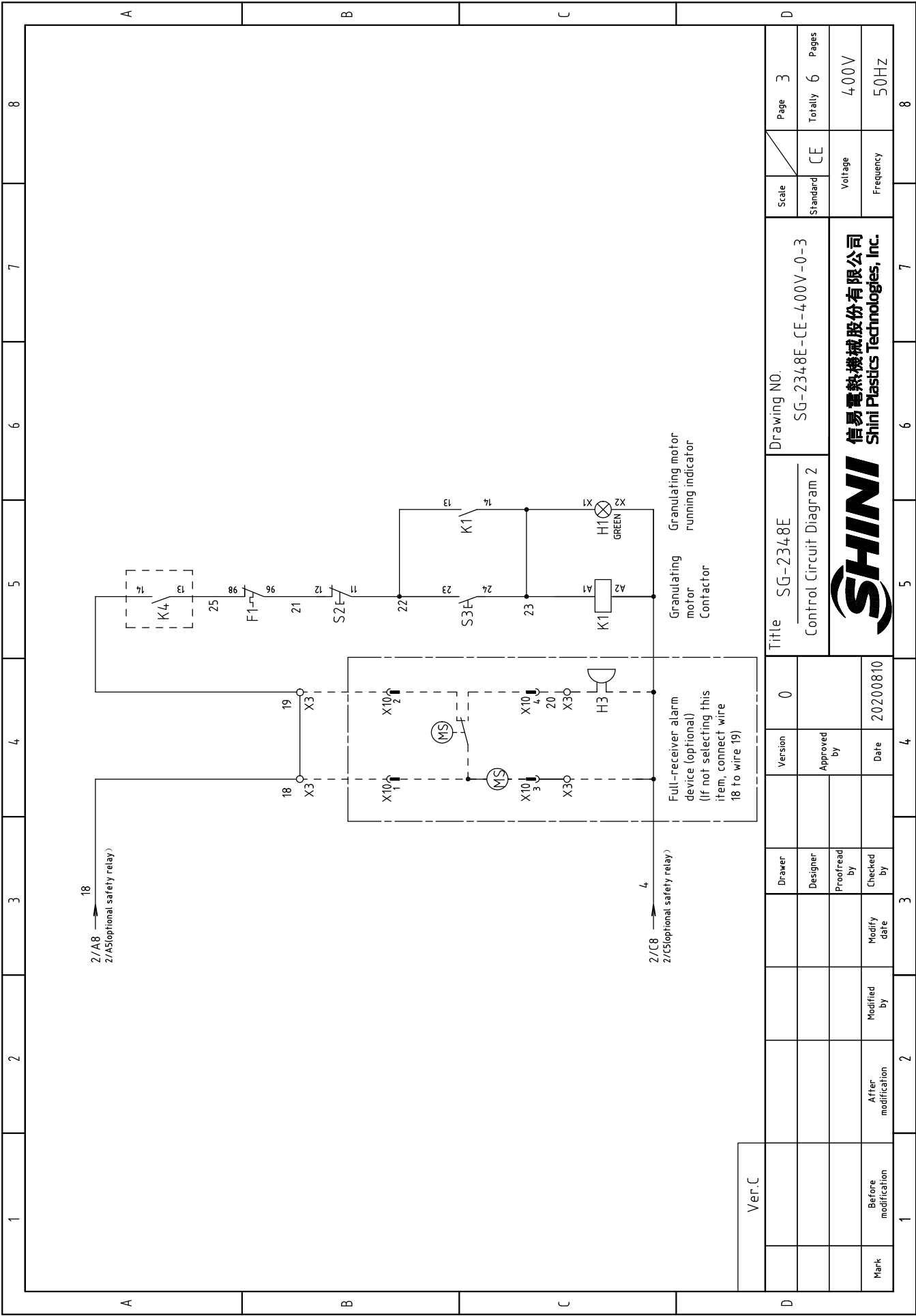


1	2		3	4	5	6	7	8
NO.	Symbol	Name	Manufacturer	Type	Specification	Number	Material number	Remark
26			APEX	PLT-254-RF	4P	1	YE680254.00100	(1)(2)
27	M1	Granulating motor	-----	7.5kW	400V 50HZ	1	-----	(1)
A								
B								
C								
D								
Ver.C			Notes: (1)Means it's not the material inside the control box.(2)Means optional accessories of full-receive alarm device.(3)Stand for optional safety relay.					
			Drawer	Version	Title		Scale	Page
			Designer	0	SG-2336E		Standard	Totally
			Proofread by	Approved by	Electrical Components List 2		CE	6
			Checked by	Date	SG-2336E-CE-400V-0-6		Voltage	Pages
Mark			Before modification	20200810			Frequency	400V
1			2	3	4	5	6	7
							8	



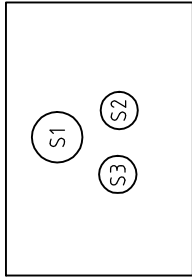
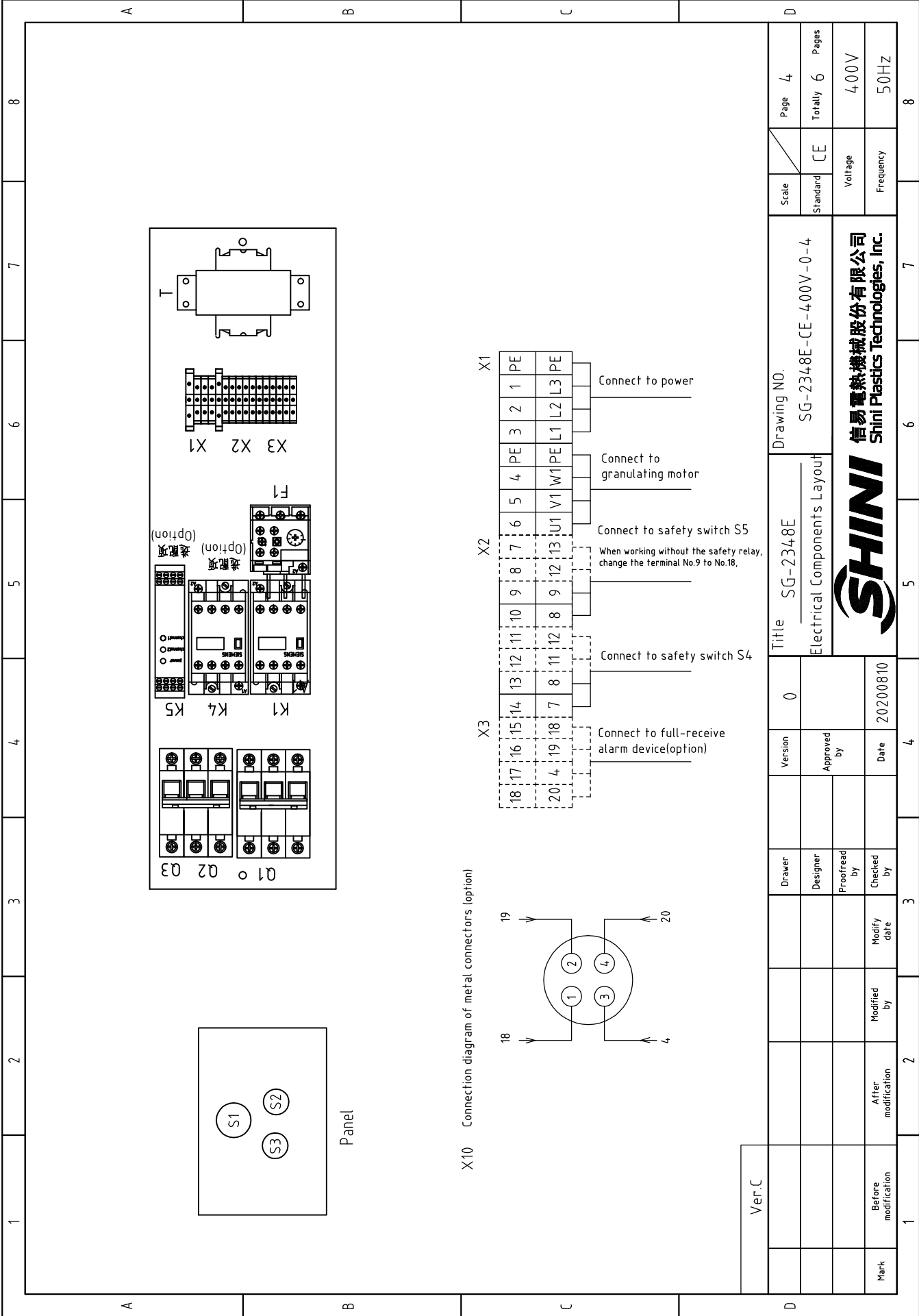


Ver.C	Title		Drawing NO.		Scale	Page
	SG-2348E		SG-2348E-CE-400V-0-2		Standard	2
Control Circuit Diagram 1		Voltage		Frequency		Pages
		400V		50Hz		
SHINI		信易電熱機械股份有限公司		SHINI		Totally
SHINI		Shini Plastics Technologies, Inc.		SHINI		
Mark	Before modification	After modification	Modified by	Modify date	Checked by	Date
1	2	3	4	5	6	7
Version		0	Approved by	Date		4
Designer		Proofread by		Checked by		3
Date		20200810		Date		4
Ver.C		0		Date		4
0		Approved by		Date		4
20200810		Checked by		Date		4
3		4		5		6
4		5		6		7
5		6		7		8
6		7		8		9
7		8		9		10
8		9		10		11
9		10		11		12
10		11		12		13
11		12		13		14
12		13		14		15
13		14		15		16
14		15		16		17
15		16		17		18
16		17		18		19
17		18		19		20
18		19		20		21
19		20		21		22
20		21		22		23
21		22		23		24
22		23		24		25
23		24		25		26
24		25		26		27
25		26		27		28
26		27		28		29
27		28		29		30
28		29		30		31
29		30		31		32
30		31		32		33
31		32		33		34
32		33		34		35
33		34		35		36
34		35		36		37
35		36		37		38
36		37		38		39
37		38		39		40
38		39		40		41
39		40		41		42
40		41		42		43
41		42		43		44
42		43		44		45
43		44		45		46
44		45		46		47
45		46		47		48
46		47		48		49
47		48		49		50
48		49		50		51
49		50		51		52
50		51		52		53
51		52		53		54
52		53		54		55
53		54		55		56
54		55		56		57
55		56		57		58
56		57		58		59
57		58		59		60
58		59		60		61
59		60		61		62
60		61		62		63
61		62		63		64
62		63		64		65
63		64		65		66
64		65		66		67
65		66		67		68
66		67		68		69
67		68		69		70
68		69		70		71
69		70		71		72
70		71		72		73
71		72		73		74
72		73		74		75
73		74		75		76
74		75		76		77
75		76		77		78
76		77		78		79
77		78		79		80
78		79		80		81
79		80		81		82
80		81		82		83
81		82		83		84
82		83		84		85
83		84		85		86
84		85		86		87
85		86		87		88
86		87		88		89
87		88		89		90
88		89		90		91
89		90		91		92
90		91		92		93
91		92		93		94
92		93		94		95
93		94		95		96
94		95		96		97
95		96		97		98
96		97		98		99
97		98		99		100

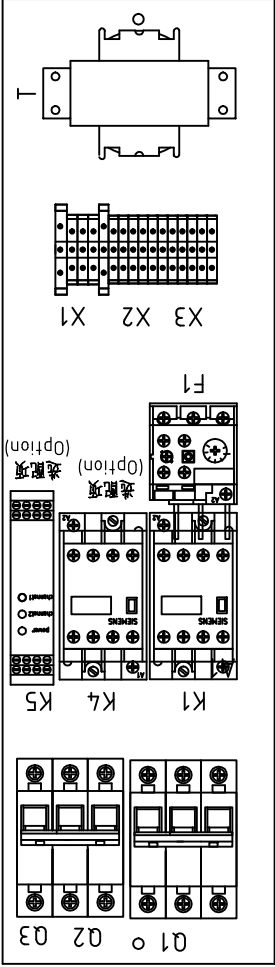


Ver.C	Mark	Before modification	Modified by	Modify date	Checked by	Proofread by	Designer	Drawer	Version	0	Title		SG-2348E		Drawing NO.		SG-2348E-CE-400V-0-3		Scale		Standard		CE		Page		3		Totally		6		Pages		400V		50Hz		8	
	1	2	3	4	5	6	7	8	9	10	11	12	13	14	15	16	17	18	19	20	21	22	23	24	25	26	27	28	29	30	31	32	33	34	35	36	37	38	39	40

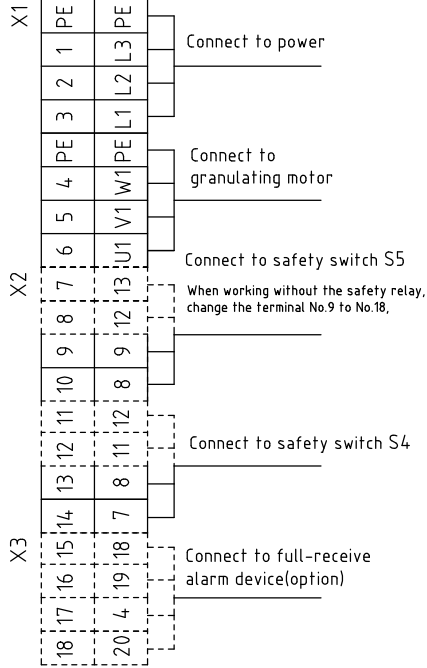
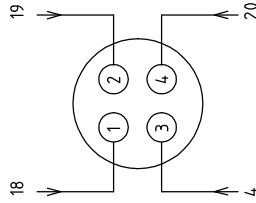
SHINI
 信易電熱機械股份有限公司
 Shini Plastics Technologies, Inc.



Panel




X10 Connection diagram of metal connectors (option)



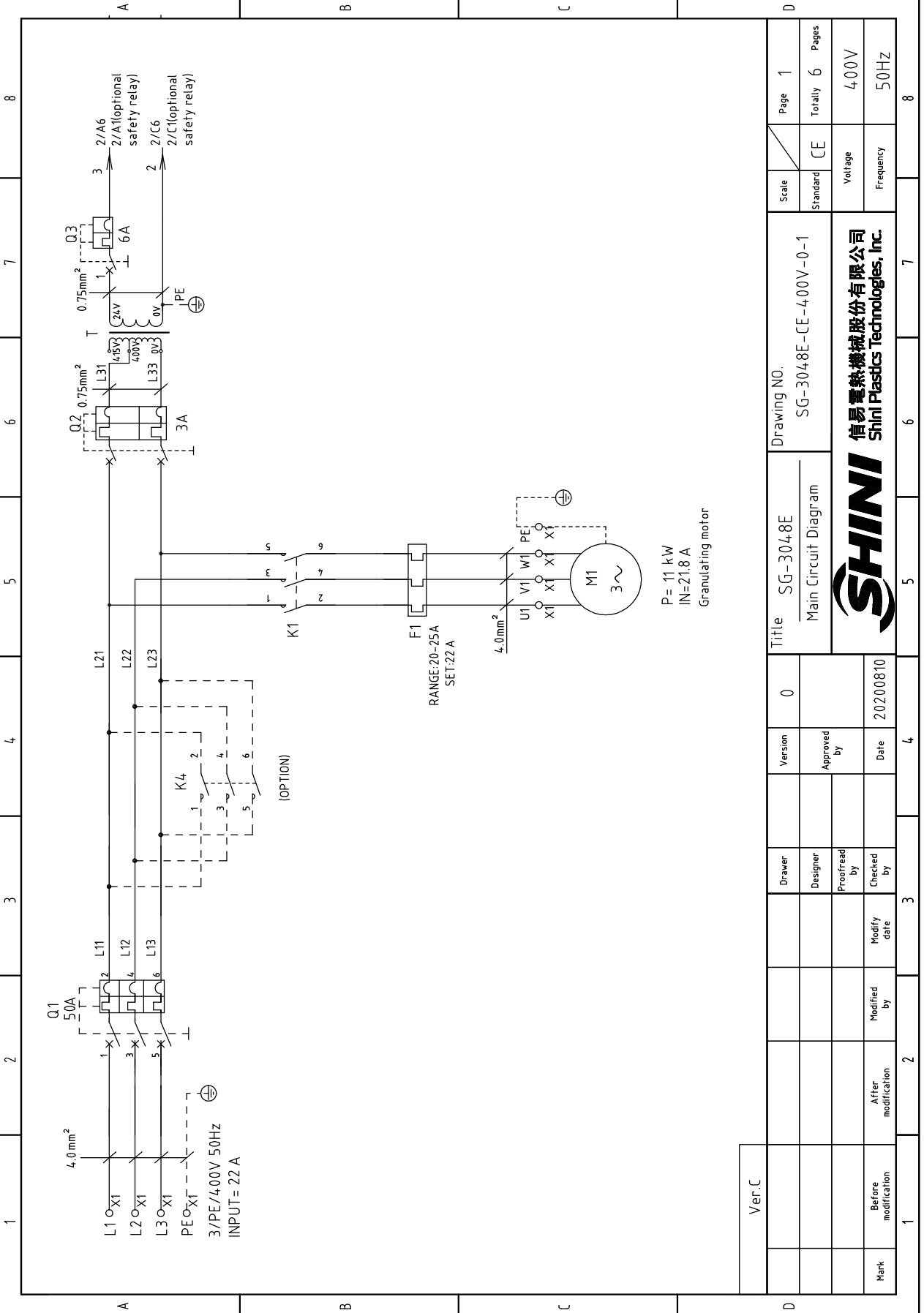
Ver.C	Drawer	Version	Title		Drawing NO.		Scale	Page
	Designer	0	SG-2348E		SG-2348E-CE-4.00V-0-4		Standard	4
	Proofread by	Approved by	Electrical Components Layout				CE	Totally 6
	Checked by	Date	20200810				Voltage	Pages
Mark	After modification	Modified by					400V	4
	Before modification	Modify date					Frequency	6
							50Hz	8

SHINI
 信易電熱機械股份有限公司
 Shini Plastics Technologies, Inc.

1	2		3	4	5	6	7	8
NO.	Symbol	Name	Manufacturer	Type	Specification	Number	Material number	Remark
1	Q1	Circuit breaker	TECO	BM-63C/3P	50A	1	YE40305003000	
2	Q2	Circuit breaker	TECO	BM-63C	3A	1	YE40200203000	
3	Q3	Circuit breaker	TECO	BM-63C	6A	1	YE40100600100	
4	K1	Contact	SIEMENS	3RT6028-1AC20	24VAC	1	YE00602802600	
5	K4	Contact	SIEMENS	3RT6028-1AC20	24VAC	1	YE00602802600	(3)
6	K5	Safety realy	PILZ	PN0Z-2.8P	24V AC/DC	1	YE04023000000	(3)
7	F1	Overload relay	SIEMENS	3RU6126-4DB0	20-25A	1	YE01260200000	
8	T	Transformer	BAIYUN	IN=400V OUT=24V	420VA	1	YE704-02400700	Delete
9	T	Sensor transformer	BAIYUN	IN=400V/415V OUT=24V	80VA	1	YE7004-0006500	New
10	X1	Terminal board	HONEYWELL	4.0mm ²	-----	6	YE60000403200	
11	X2	Terminal board	HONEYWELL	4.0mm ² PE	-----	2	YE60000403500	
12	X2	Terminal board	HONEYWELL	2.5mm ²	-----	4	YE60002503200	(3)
13	X2	Terminal board	HONEYWELL	2.5mm ²	-----	4	YE60002503200	(3)
14	X3	Terminal board	HONEYWELL	2.5mm ²	-----	4	YE60002503200	(2)
15	S1	Emergency stop button	SCHNEIDER	XB2BS542C	400VAC	1	YE11254-200000	(1)
16	S2	Contact block	SCHNEIDER	ZB2BE102C	1NC	1	YE00210203100	(1)(3)
17	S2	Stop button	SCHNEIDER	XB2BA22C	400VAC	1	YE11222000000	(1)
18	S3,H1	Start button (with light)	SCHNEIDER	XB2BW33M1C	24VAC	1	YE11233100000	(1)
19	S3	Contact block	SCHNEIDER	ZB2BE101C	1NO	1	YE00210103100	(1)(3)
20	S4,S5	Safety switch	SCHMERSRC	AZ15-02ZVRK-14.76	AZ-15	2	YE16147600100	(1)
21	S4,S5	Safety switch	SCHMERSRC	AZ16-02ZVRK-14.76	AZ-16	2	YE16147600000	(1)(3)
22		Operation parts AZ17-B6	-----	-----	AZ-17	2	YE16176000000	(1)
23	H3	Buzzer	TEND	EA-2	24VAC	1	YE84240200000	(1)(2)
24	MS	Material level switch	SIPAI	SR-80	24VAC	1	YE15802400100	(1)(2)
25	X10	Metal connector	APEX	PLT-254-PM	4P	1	YE68025400000	(1)(2)
Ver.C Notes: (1)Means it's not the material inside the control box.(2)Means optional accessories of full-receive alarm device.(3)Stand for optional safety relay.								
			Drawer	Version	Title		Scale	
			Designer	0	SG-2348E		Drawing NO.	
			Proofread by	Approved by	Electrical Components List 1		Standard	
			Checked by	Date	SG-2348E-CE-4.00V-0-5		CE	
			Modified by	20200810			Voltage	
			Modify date				Frequency	
Mark	Before modification	After modification			 信易電熱機械股份有限公司 Shini Plastics Technologies, Inc.		400V 50HZ	
1	2	3	4	5	6	7	8	
					Page 5		Totally 6 Pages	

1	2		3	4	5	6	7	8
NO.	Symbol	Name	Manufacturer	Type	Specification	Number	Material number	Remark
26			APEX	PLT-254-RF	4P	1	YE68025400100	(1)(2)
27	M1	Granulating motor	-----	11kW	400V 50Hz	1	-----	(1)
A								
B								
C								
D								
Ver.C Notes: (1)Means it's not the material inside the control box.(2)Means optional accessories of full-receive alarm device. (3)Stand for optional safety relay.								
			Version	0	Title		Scale	
			Designer		SG-2348E		Standard	
			Proofread by		Electrical Components List 2		CE	
			Checked by		Drawing NO.		Page 6	
			Modify date	20200810	SG-2348E-CE-4.00V-0-6		Totally 6 Pages	
Mark			After modification		Voltage		4.00V	
			Modified by		Frequency		50Hz	
1			2	3	4	5	6	7
							8	

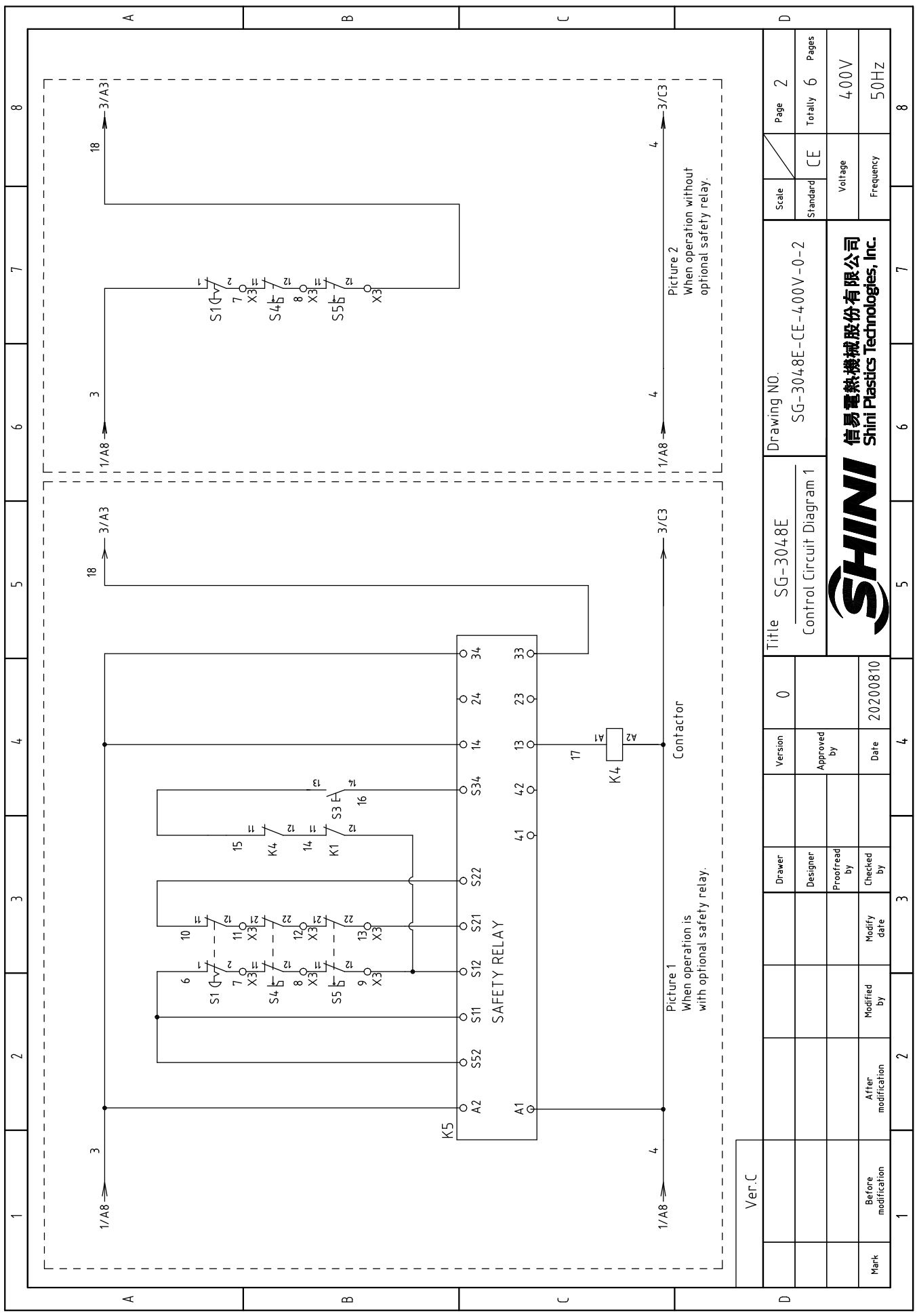




Ver.C									
Mark	Before modification	Modified by	Modify date	Checked by	Date	Proofread by	Approved by	Version	0

Title		SG-3048E		Drawing NO.		SG-3048E-CE-400V-0-1		Scale		Page 1	
Main Circuit Diagram								Standard		Totally 6 Pages	
								Voltage		400V	
								Frequency		50Hz	

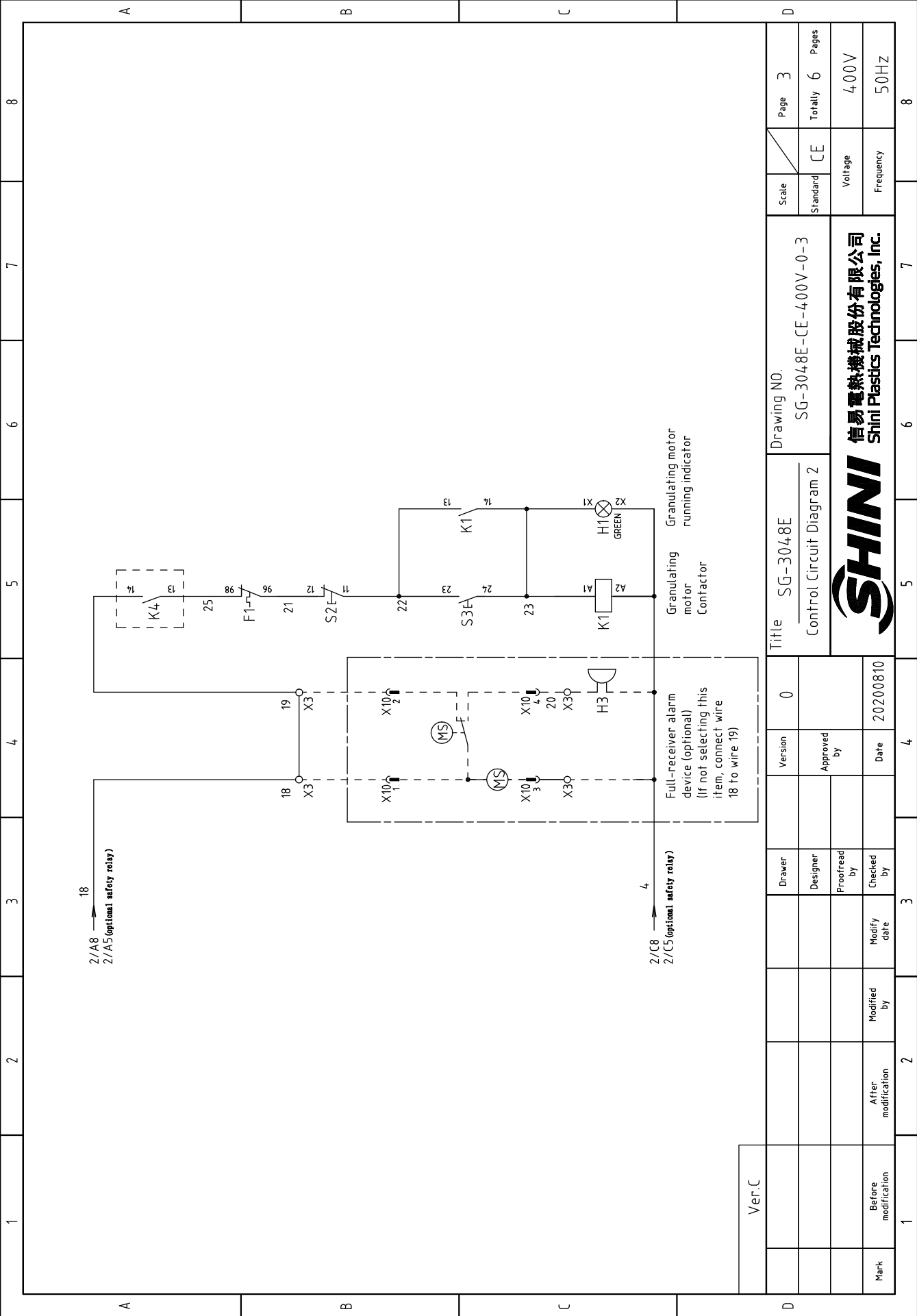
SHINI
 信易电热机械股份有限公司
 Shini Plastics Technologies, Inc.



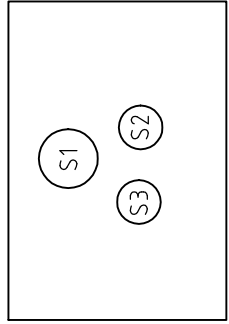
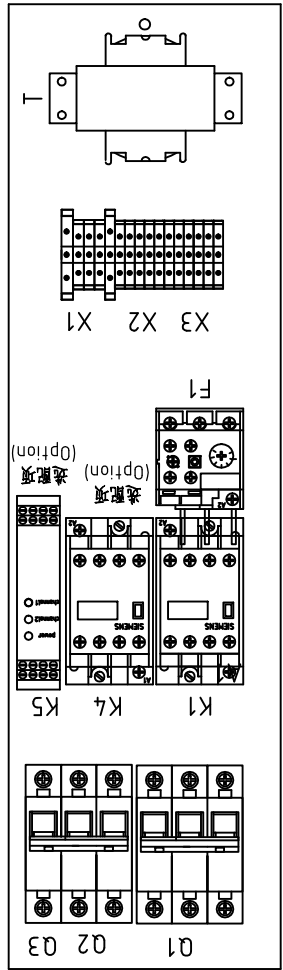
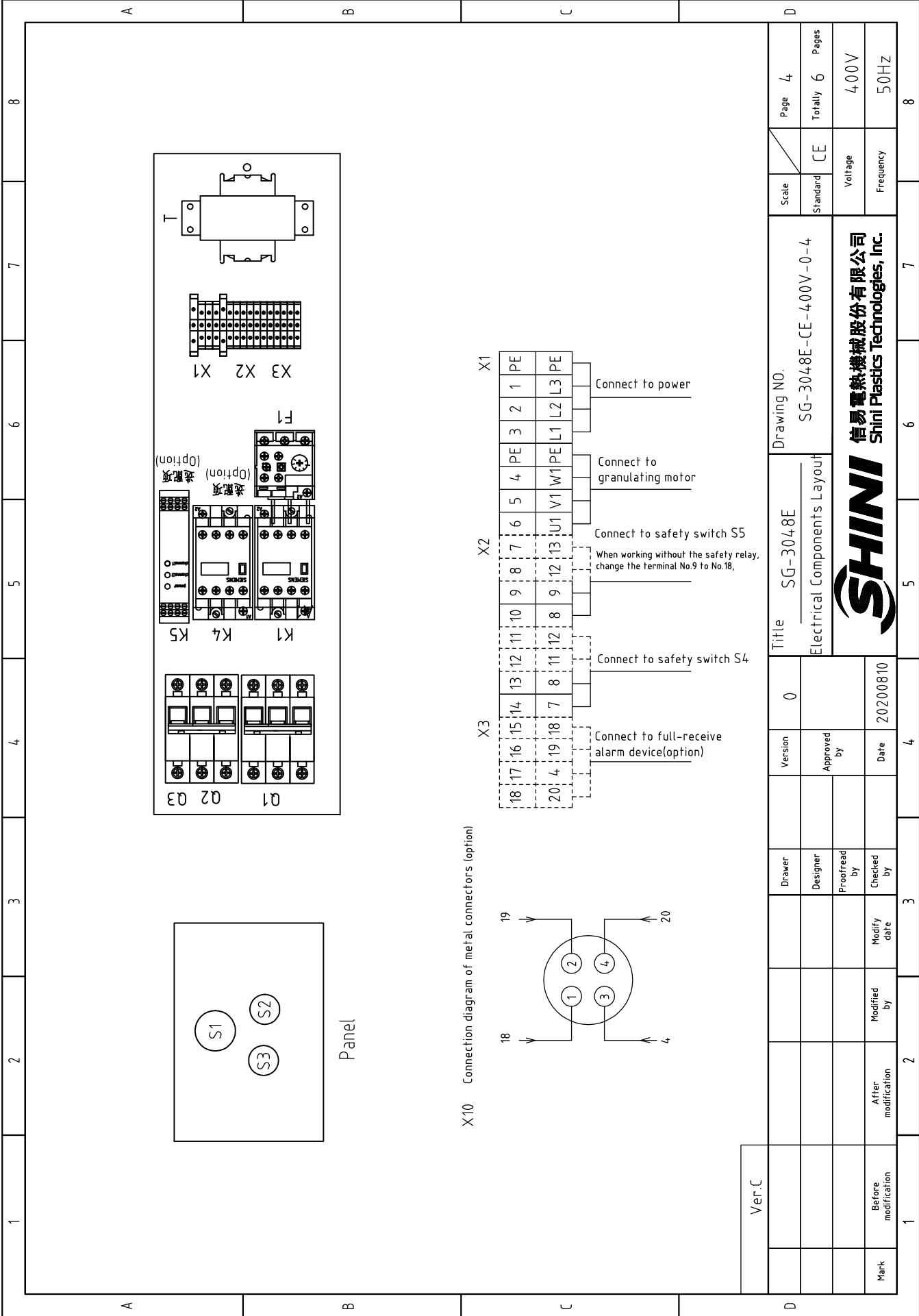
Picture 1
When operation is
with optional safety relay.

Picture 2
When operation without
optional safety relay.

Ver.C	Title		Drawing NO.		Scale	Page
	SG-3048E		SG-3048E-CE-400V-0-2		Standard	Totally
Control Circuit Diagram 1		CE		Voltage		Pages
SHINI		信易電熱機械股份有限公司		400V		50HZ
SHINI		Shini Plastics Technologies, Inc.		Frequency		8
Ver.C		Version		0		4
Designer		Approved by		Date		20200810
Proofread by		Checked by		Modify date		2
Mark		After modification		Modified by		3
Before modification		Modified by		Date		4

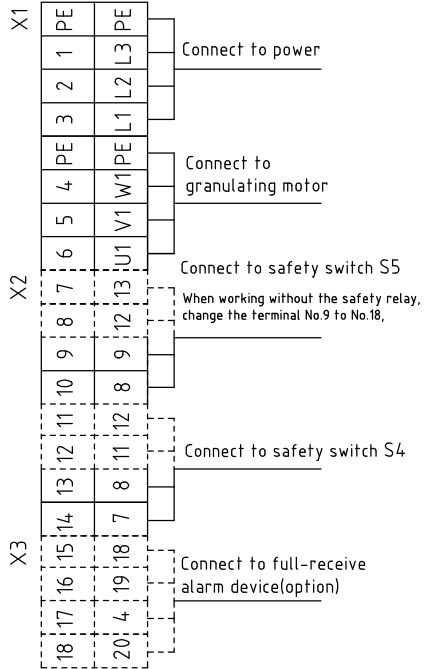
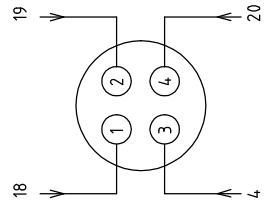


Ver.C	Title	SG-3048E		Drawing NO.	SG-3048E-CE-400V-0-3		Scale	CE		Page	3					
		Control Circuit Diagram 2			Standard			Voltage			Frequency		Totally		6 Pages	
Mark	Before modification	After modification	Modified by	Modify date	Checked by	Proofread by	Designer	Drawer	Version	0	Date		20200810			
											SHINI		信易電熱機械股份有限公司		Shini Plastics Technologies, Inc.	



Panel

X10 Connection diagram of metal connectors (option)



Ver.C	Drawer	Version	Title		Drawing NO.		Scale	Page
	Designer	0	SG-3048E		SG-3048E-CE-4.00V-0-4		Standard	Totally
	Proofread by	Approved by	Electrical Components Layout				CE	6
	Checked by	Date	20200810				Voltage	400V
Mark	Before modification	Modified by					Frequency	50Hz
	After modification	Modify date						8

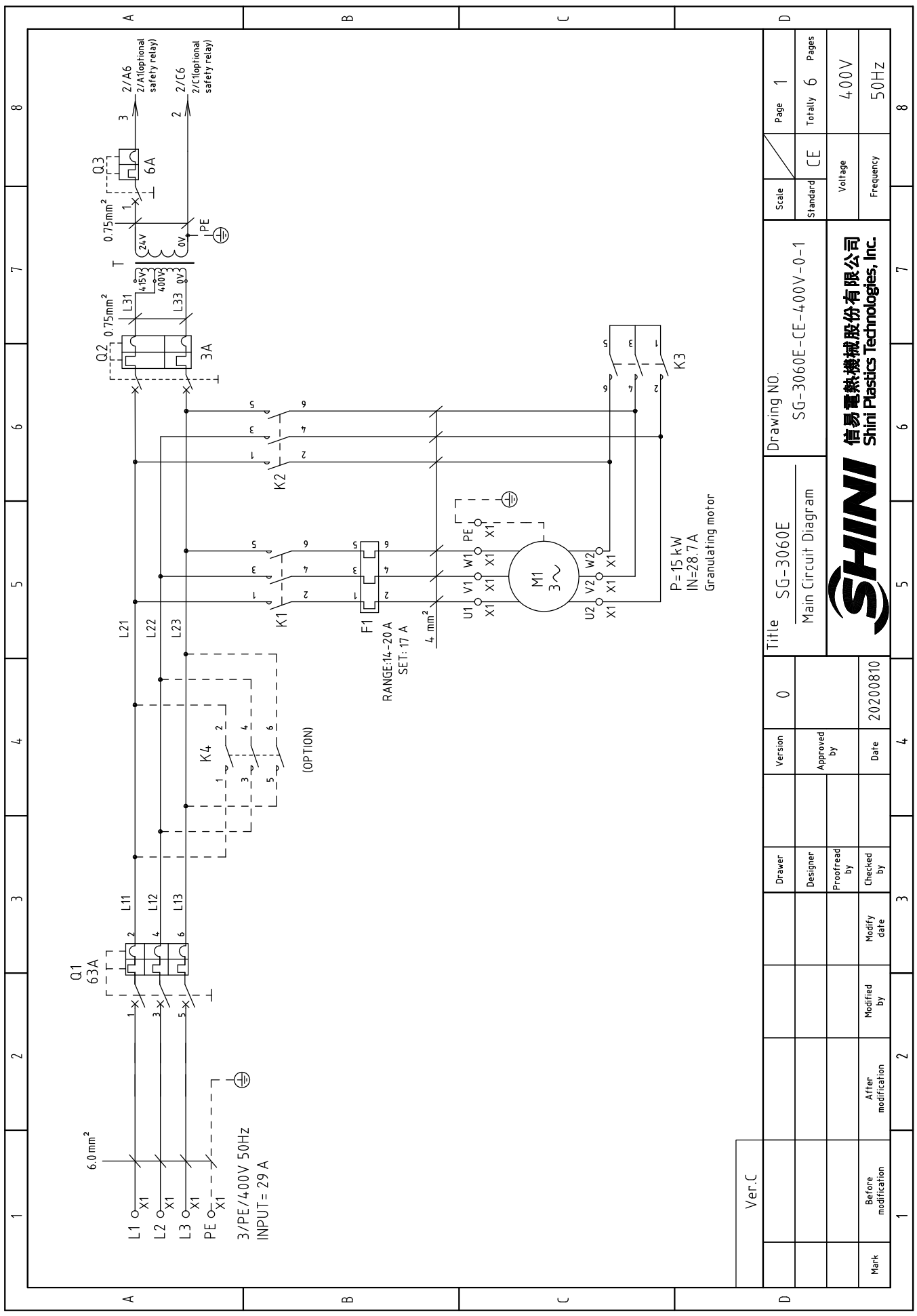


1	2	3	4	5	6	7	8	
NO.	Symbol	Name	Manufacturer	Type	Specification	Number	Material number	Remark
1	Q1	Circuit breaker	TECO	BM-63C/3P	50A	1	YE40305003000	
2	Q2	Circuit breaker	TECO	BM-63C	3A	1	YE40200203000	
3	Q3	Circuit breaker	TECO	BM-63C	6A	1	YE40100600100	
4	K1	Contact	SIEMENS	3RT6028-1AC20	24VAC	1	YE00602802600	
5	K4	Contact	SIEMENS	3RT6028-1AC20	24VAC	1	YE00602802600	(3)
6	K5	Safety relay	PILZ	PN0Z*2.8P	24V AC/DC	1	YE04023000000	(3)
7	F1	Overload relay	SIEMENS	3RU6126-4DB0	20-25A	1	YE01260200000	
8	T	Transformer	BAHUN	IN=400V OUT=24V	120VA	1	YE70402400700	Delete
9	T	Sensor transformer	-----	IN=400V/4.15V OUT=24V	80VA	1	YE70040006500	New
10	X1	Terminal board	HONEYWELL	4.0mm ²	-----	6	YE60000403200	
11			HONEYWELL	4.0mm ² PE	-----	2	YE60000403500	
12	X2	Terminal board	HONEYWELL	2.5mm ²	-----	4	YE60002503200	(3)
13			HONEYWELL	2.5mm ²	-----	4	YE60002503200	(2)
14	X3	Terminal board	HONEYWELL	2.5mm ²	-----	4	YE60002503200	(1)
15	S1	Emergency stop button	SCHNEIDER	XB2BS542C	400VAC	1	YE11254200000	(1)
16		Contact block	SCHNEIDER	ZB2BE102C	1NC	1	YE00210203100	(1)(3)
17	S2	Stop button	SCHNEIDER	XB2BA22C	400VAC	1	YE11222000000	(1)
18	S3,H1	Start button (with light)	SCHNEIDER	XB2BW33M1C	24VAC	1	YE11233100000	(1)
19		Contact block	SCHNEIDER	ZB2BE101C	1NO	1	YE00210103100	(1)(3)
20	S4,S5	Safety switch	SCHMERSRC	AZ15-02ZVRK-14.76	AZ-15	2	YE16147600100	(1)
21	S4,S5	Safety switch	SCHMERSRC	AZ16-02ZVRK-14.76	AZ-16	2	YE16147600000	(1)(3)
22		Operation parts AZ17-B6	-----	-----	AZ-17	2	YE16176000000	(1)
23	H3	Buzzer	TEND	EA-2	24VAC	1	YE84240200000	(1)(2)
24	MS	Material level switch	SIPAI	SR-80	24VAC	1	YE15802400100	(1)(2)
25	X10	Metal connector	APEX	PLT-254-PM	4P	1	YE68025400000	(1)(2)
Ver.C								
Notes: (1)Means it's not the material inside the control box.(2)Means optional accessories of full-receive alarm device. (3)Stand for optional safety relay.				Title SG-3048E		Drawing NO. SG-3048E-CE-4.00V-0-5		Scale
				Electrical Components List 1		Standard CE		Page 5
				Version 0		Voltage		Totally 6 Pages
				Approved by		Frequency		400V
				Date 20200810				50Hz
Mark	Before modification	Modified by	Modified date	Checked by				
1	2	3	4	5	6	7	8	



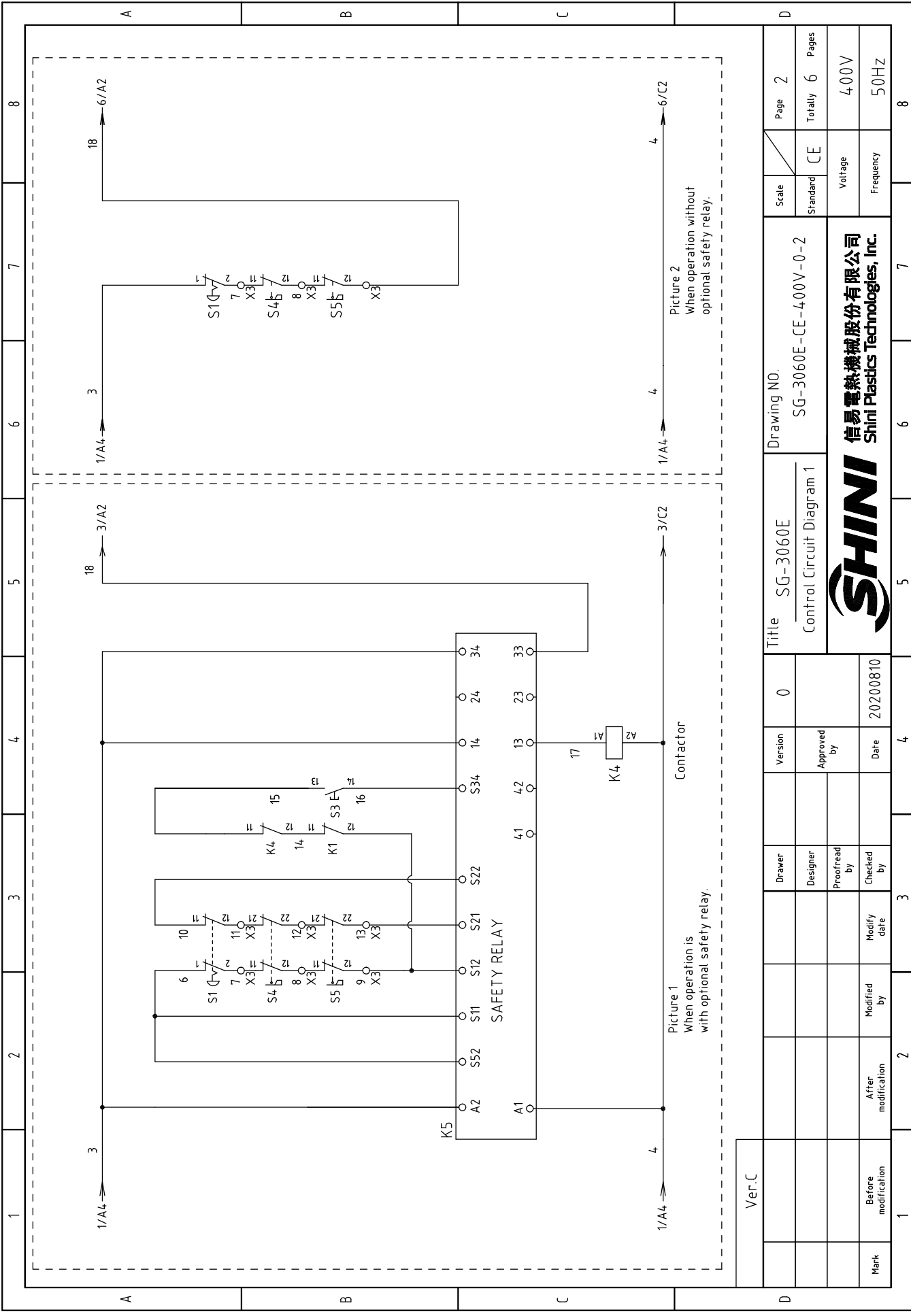
1	2		3	4	5	6	7	8
NO.	Symbol	Name	Manufacturer	Type	Specification	Number	Material number	Remark
26			APEX	PLT-254-RF	4P	1	YE68025400100	(1)(2)
27	M1	Granulating motor	-----	11kw	400V 50Hz	1	-----	(1)
A								
B								
C								
D								
Ver.C Notes: (1)Means it's not the material inside the control box (2)Means optional accessories of full-receive alarm device. (3)Stand for optional safety relay.								
			Version	0	Title		SG-3048E	Scale
			Drawer		Drawing NO.		SG-3048E-CE-4.00V-0-6	Standard
			Designer		Electrical Components List 2		CE	Totally
			Proofread by				CE	Pages
			Checked by				Voltage	4.00V
			Modify date	20200810			Frequency	50Hz
Mark	Before modification	After modification	Modified by	4	5	6	7	8



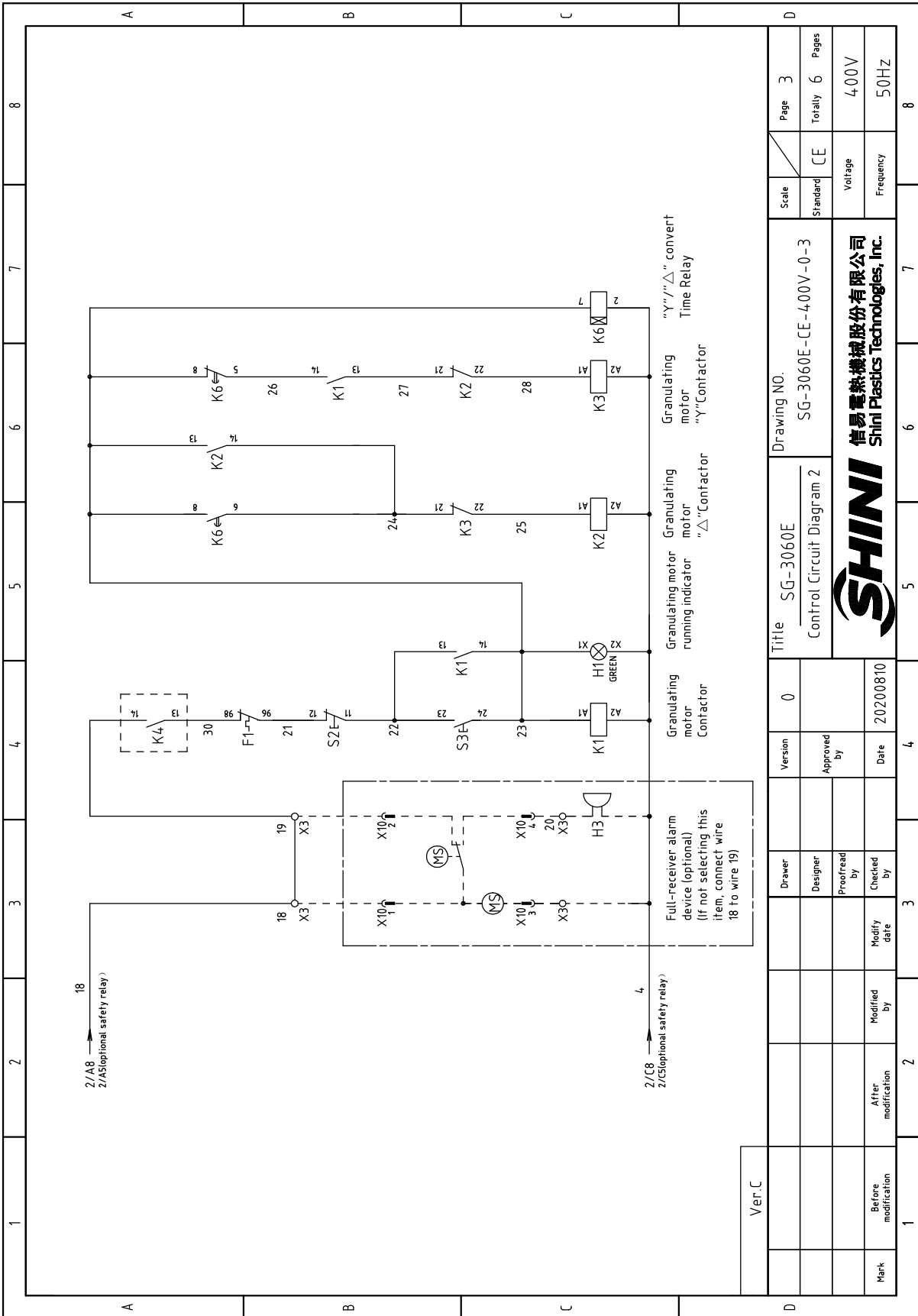


Ver.C	Title		Drawing NO.		Scale		Page		
	SG-3060E		SG-3060E-CE-400V-0-1		Standard CE		1		
Main Circuit Diagram		Version		Designer		Totally		Pages	
		0				6		6	
Mark		Before modification		Proofread by		Voltage		400V	
		Modified by		Checked by		Frequency		50Hz	
		Modify date		Date					
		20200810		20200810					
		3		4					
		2		4					
		1		4					
		2		4					
		3		4					
		4		4					
		5		4					
		6		4					
		7		4					
		8		4					

SHINI
 信易電熱機械股份有限公司
 Shini Plastics Technologies, Inc.



Ver.C				Title SG-3060E				Drawing No.				Scale			
Mark	Before modification	Modified by	Modify date	Designer	Proofread by	Checked by	Date	Version	0	SG-3060E-CE-400V-0-2	CE	CE	Voltage	Frequency	
	After modification	20200810	20200810												Approved by
SHINI 信易電熱機械股份有限公司 Shini Plastics Technologies, Inc.															
1	2	3	4	5	6	7	8	9	10	11	12	13	14	15	



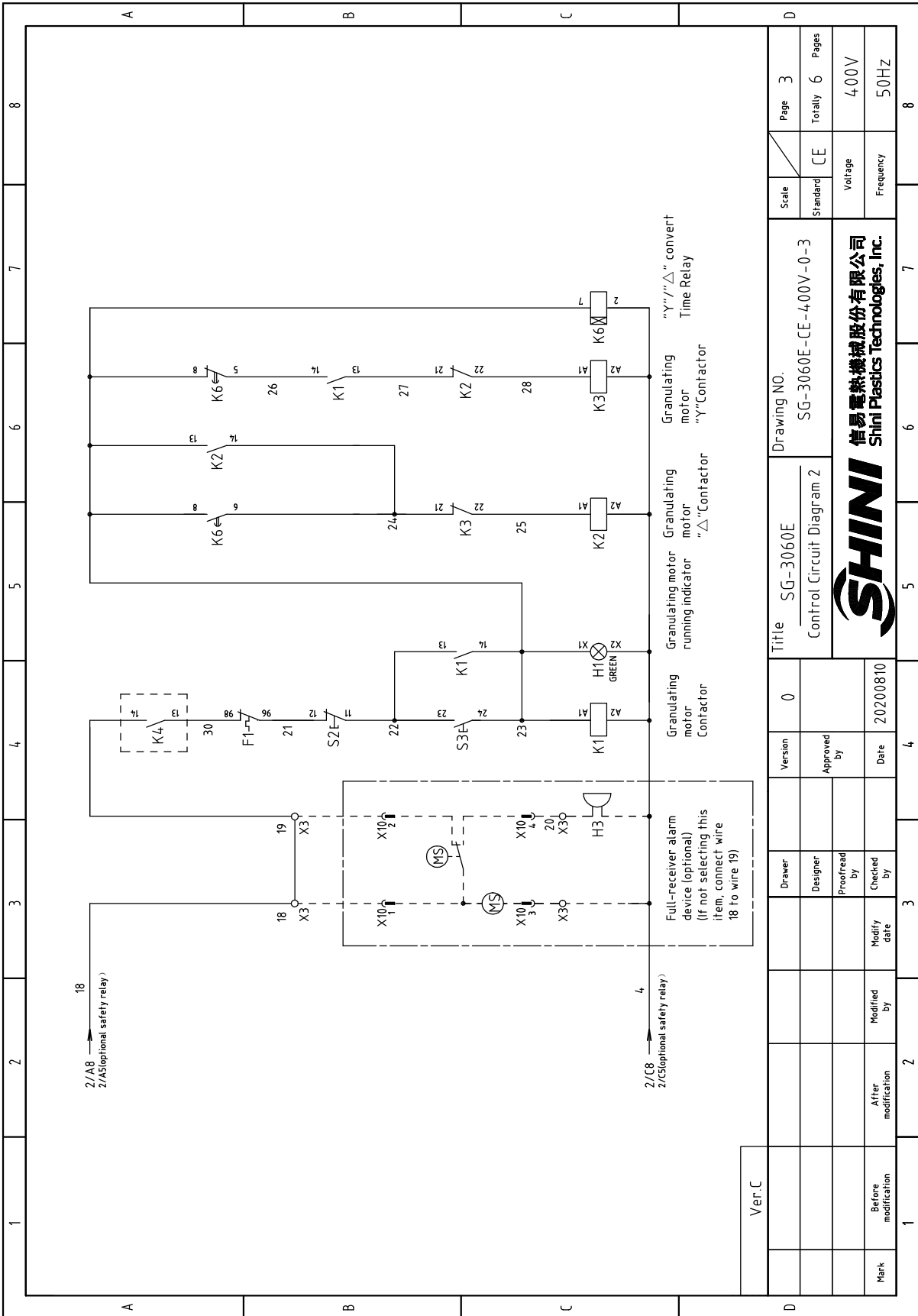
2/A8
2/A5(optional safety relay)

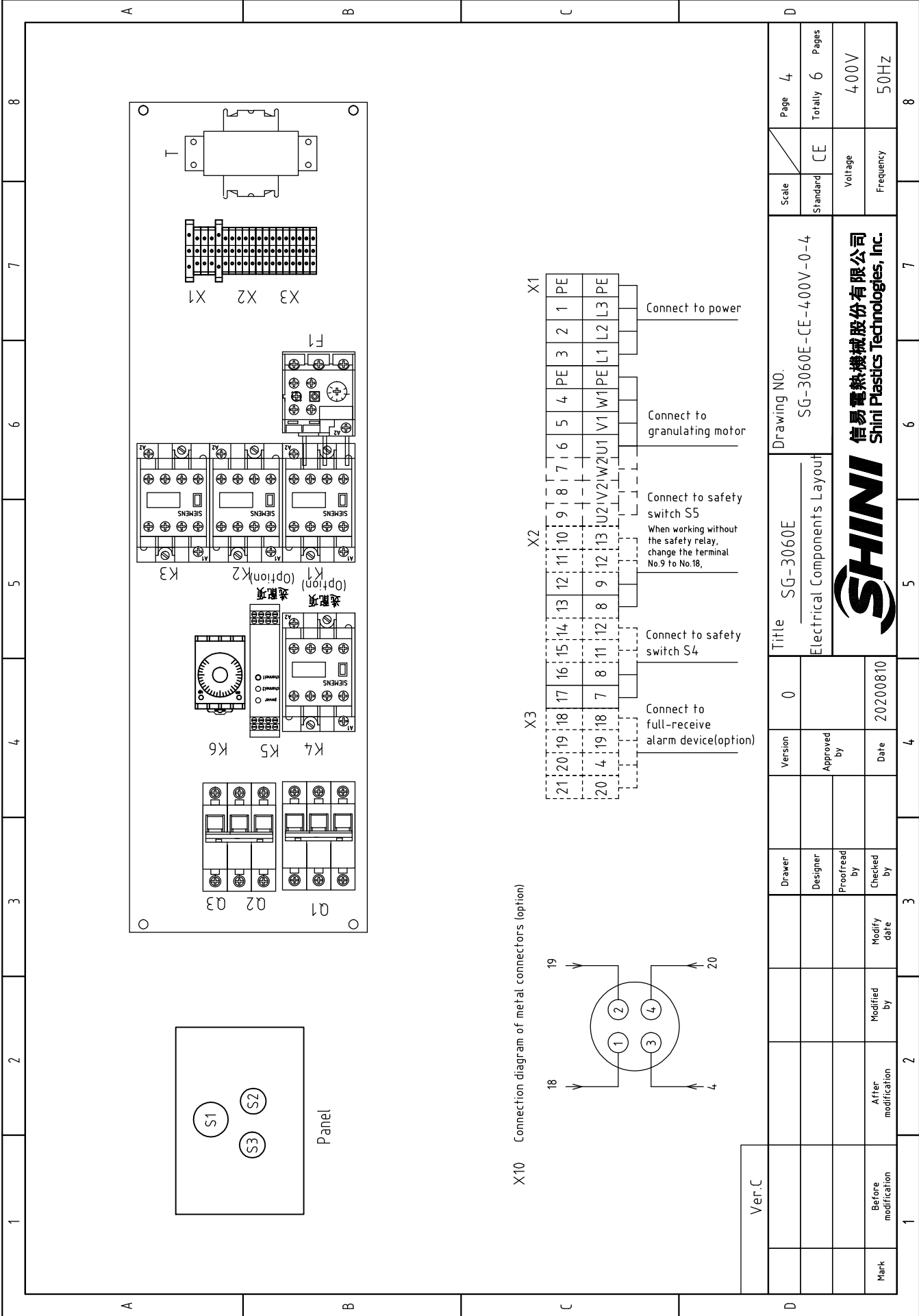
2/L8
2/L5(optional safety relay)

Ver.C								
Mark	Before modification	Modified by	Modify date	Checked by	Proofread by	Designer	Drawer	Version
								0

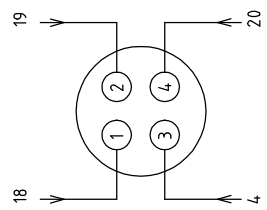
Title			Drawing NO.		
SG-3060E			SG-3060E-CE-400V-0-3		
Control Circuit Diagram 2					
 SHINI 信易電熱機械股份有限公司 Shini Plastics Technologies, Inc.					
Date			Date		
20200810					

Scale	Page
Standard	Totally 6
Voltage	Pages
400V	6
Frequency	
50HZ	





X10 Connection diagram of metal connectors (option)



Ver.C	Drawer	Version	0	Mark	Before modification	Modified by	2	3	4	5	6	7	8
	Designer	Approved by		Date	20200810								
	Proofread by												
	Checked by												
	Modify date												

Title SG-3060E
Electrical Components Layout

Drawing NO.
SG-3060E-CE-400V-0-4

Scale	Standard	CE	Page	4
			Totally	6
			Pages	
			Voltage	400V
			Frequency	50Hz

SHINI
信易電熱機械股份有限公司
Shini Plastics Technologies, Inc.

1	2		3	4	5	6	7	8
NO.	Symbol	Name	Manufacturer	Type	Specification	Number	Material number	Remark
1	Q1	Circuit breaker	TECO	BM-63C/3P	63A	1	YE40306303000	
2	Q2	Circuit breaker	TECO	BM-63C	3A	1	YE40200203000	
3	Q3	Circuit breaker	TECO	BM-63C	6A	1	YE40100600100	
4	K1 K2	Contact	SIEMENS	3RT6026-1AC20	24VAC	2	YE00602602600	
5		Auxiliary Contactor	SIEMENS	3RH6911-1AA10	1NO	1	YE00691100000	New
6	K3	Contact	SIEMENS	3RT6025-1AC20	24VAC	1	YE00602502600	
7	K4	Contact	SIEMENS	3RT5036-1AC20	24VAC	1	YE00503602600	(3)
8		Auxiliary Contactor	SIEMENS	3RH5921-1EA01	1NC+1NO	1	YE00592103100	(3)
9		Auxiliary Contactor	SIEMENS	3RH5921-1CA10	1NO	1	YE00592110000	(3)New
10	K5	Safety relay	PILZ	PN0Z-2.8P	24V AC/DC	1	YE04023000000	(3)
11	K6	Timer relay	YUYUN	TH3A-NAB	24VAC	1	YE86602400300	
12	F1	Overload relay	SIEMENS	3RU6126-4BB0	14-20A	1	YE01260140000	
13	T	Transformer	BAIYUN	IN=400V OUT=24V	120VA	1	YE704-023000000	Delete
14	T	Sensor transformer	BAIYUN	IN=400V/415V OUT=24V	80VA	1	YE70023005200	New
15	T	Sensor transformer	BAIYUN	IN=400V/415V OUT=24V	180VA	1	YE70040006700	(3)New
16	X1	Terminal board	HONEYWELL	6.0mm ²	-----	3	YE60000603200	
17			HONEYWELL	6.0mm ² PE	-----	1	YE60000603500	
18			HONEYWELL	4.0mm ²	-----	6	YE60000403200	
19			HONEYWELL	4.0mm ² PE	-----	1	YE60000403500	
20	X2	Terminal board	HONEYWELL	2.5mm ²	-----	4	YE600002503200	
21			HONEYWELL	2.5mm ²	-----	4	YE600002503200	(3)
22	X3	Terminal board	HONEYWELL	2.5mm ²	-----	4	YE600002503200	(2)
23	S1	Emergency stop button	SCHNEIDER	XB2BS542C	400VAC	1	YE11254200000	(1)
24		Contact block	SCHNEIDER	ZB2BE102C	1NC	1	YE00210203100	(1)(3)
25	S2	Stop button	SCHNEIDER	XB2BA22C	400VAC	1	YE11222000000	(1)
Notes: (1)Means it's not the material inside the control box.(2)Means optional accessories of full-receive alarm device. (3)Stand for optional safety relay.								
Ver.C		Title SG-3060E		Drawing NO.		Scale		Page 5
		Electrical Components List 1		SG-3060E-CE-4.00V-0-5		Standard CE		Totally 6 Pages
Mark		Before modification		Modified by		Voltage		400V
1		2		3		Frequency		50HZ
		After modification		Date		Voltage		400V
		20200810		Date		Frequency		50HZ
		20200810		Date		Voltage		400V
		20200810		Date		Frequency		50HZ



1		2		3		4		5		6		7		8	
NO.	Symbol	Name	Manufacturer	Type	Specification	Number	Material number	Remark							
26	S3,H1	Start button (with light)	SCHNEIDER	XB2BW33M1C	24VAC	1	YE11233100000	(1)							
27		Contact block	SCHNEIDER	ZB2BE101C	1NO	1	YE00210103100	(1)(3)							
28	S4,S5	Safety switch	SCHMERSRC	AZ15-02ZVRK-1476	AZ-15	2	YE16147600100	(1)							
29	S4,S5	Safety switch	SCHMERSRC	AZ16-02ZVRK-1476	AZ-16	2	YE16147600000	(1)(3)							
30		Operation parts AZ17-B6	-----	-----	AZ-17	2	YE16176000000	(1)							
31	H3	Buzzer	TEND	EA-2	24VAC	1	YE84240200000	(1)(2)							
32	MS	Material level switch	SIPAI	SR-80	24VAC	1	YE15802400100	(1)(2)							
33	X10	Metal connector	APEX	PLT-254-PM	4P	1	YE68025400000	(1)(2)							
34			APEX	PLT-254-RF	4P	1	YE68025400100	(1)(2)							
35	M1	Granulating motor	----	15kW	400V 50Hz	1	-----	(1)							
B															
C															
D															
Ver.C Notes: (1)Means it's not the material inside the control box.(2)Means optional accessories of full-receive alarm device. (3)Stand for optional safety relay.															
		Title		SG-3060E		Drawing NO.		SG-3060E-CE-4.00V-0-6		Scale		Page 6		8	
		Electrical Components List 2		Version		0		Standard		CE		Totally 6		Pages	
		Checked by		Date		20200810		Voltage		400V		Frequency		50Hz	
Mark		Before modification		Modified by		Modify date		After modification		Modified by		Modify date		20200810	
1		2		3		4		5		6		7		8	

