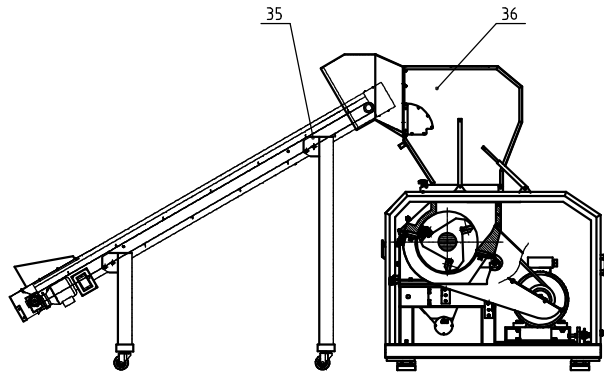
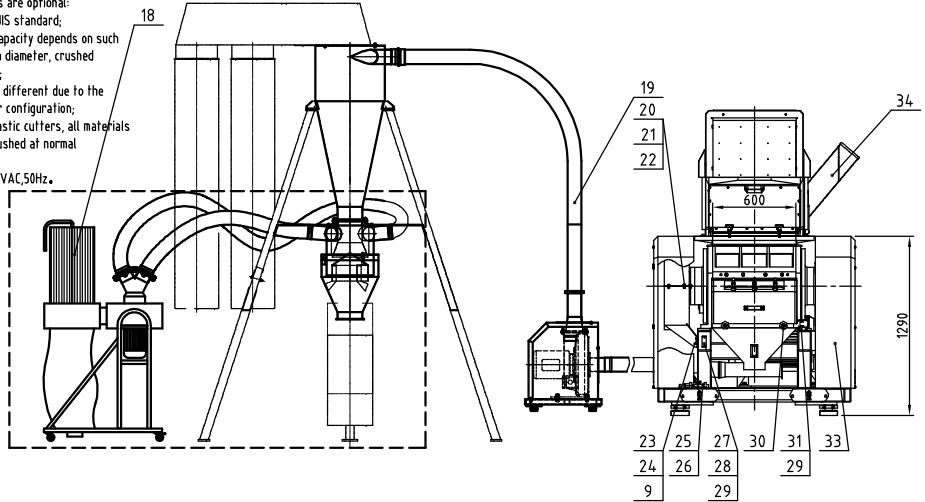
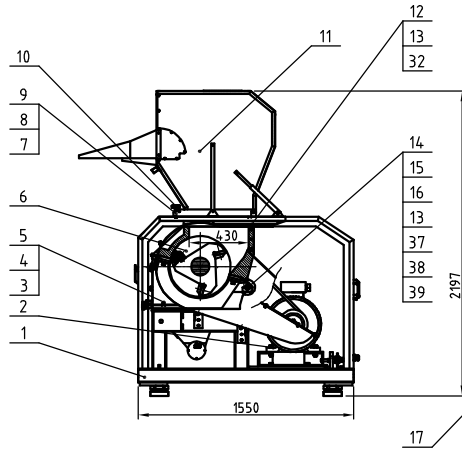


| Standard weight(kg) | Noise level dB(A) | Max. cutting ability (kg/hr) | Cutting Chamber Size (mm) | Rotating Cutter Qty. | Fixed Cutter Qty. | Cutter Material | Conveying blower open(m³) | Main Shaft Speed (r.p.m) | Motor Power (kW, hp/60Hz) | Ver. No. |
|---------------------|-------------------|------------------------------|---------------------------|----------------------|-------------------|-----------------|---------------------------|--------------------------|---------------------------|----------|
| 2350(2430) | 105~110 | 800 | 430x600 | 3x1(5x1) | 2x1 | SKD11 | 2.2 | 525 | 30(37) | Ver.E |

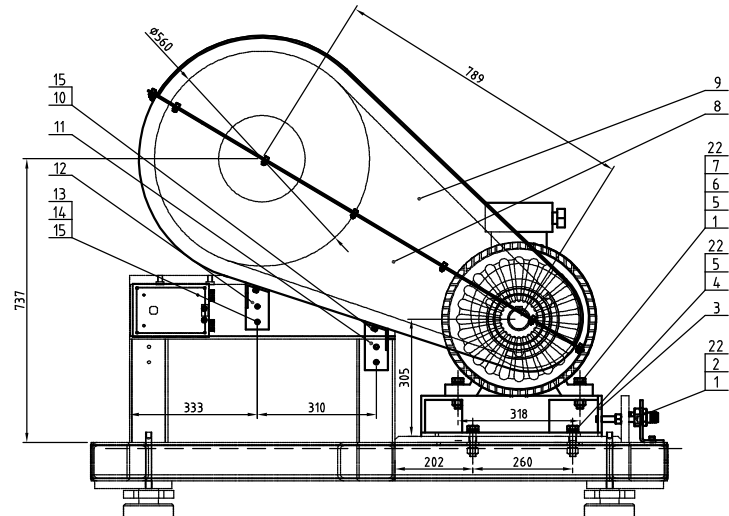
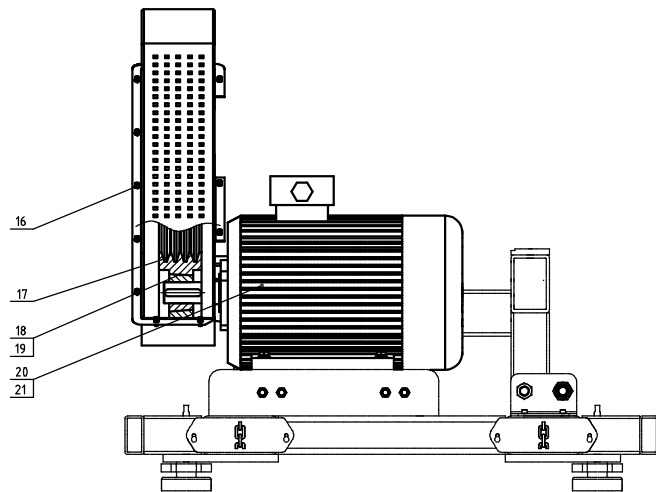
Notes: 1) Values in brackets are optional;
 2) SKD11 is the Japan JIS standard;
 3) The max. crushing capacity depends on such factors as the screen mesh diameter, crushed material size and materials;
 4) The cutting noise is different due to the cutting materials and motor configuration;
 5) In order to avoid plastic cutters, all materials to be crushed should be crushed at normal temperature;
 6) Machine power: 3φ, 400VAC, 50Hz.



| | | | | | |
|----|-----------------|---------------------------------------------------|----------|----|--------|
| 39 | YW64001000100 | Hex nut GB/T6170 M10 | | 1 | |
| 38 | YW61106500000 | Hex column head screw M10x45 | | 1 | |
| 37 | YW66102500000 | Flat washer 10x25x1.5 Longzine | | 2 | |
| 36 | - | with conveyor feed box assembly | Assembly | 1 | option |
| 35 | - | Conveyor | Assembly | 1 | option |
| 34 | - | Side feed box assembly | Assembly | 1 | option |
| 33 | - | Cover parts | Assembly | 1 | |
| 32 | YW66102000100 | Flat washer A grade 10(11x20x2) | | 12 | |
| 31 | - | Switch fixed plate | SPH4.0 | 1 | |
| 30 | YR4.00835000000 | Star handle B M8x35 | Assembly | 2 | |
| 29 | YW61051000200 | Cross recessed pan head screw GB/T6170 M8x40 | | 4 | |
| 28 | JT10014.0000000 | Inner hex. spanner M14 large | | 1 | |
| 27 | - | Hex. spanner fixed plate | SPCC2.0 | 1 | |
| 26 | YR4.00845000000 | Star handle B M8x35 | Assembly | 2 | |
| 25 | BH104.36010010 | Pressfitting knife jig | Assembly | 1 | |
| 24 | YW65008000100 | Standard spring washer GB/T93-Longzine | | 4 | |
| 23 | YW61081600000 | Inner hex column head screw GB/T6170 M8x40 | | 4 | |
| 22 | YW62061000000 | Large recessed pan head screw JIS M10x40 Longzine | | 6 | |

| | | | | | |
|----|----------------|-------------------------------------------------|----------|----|--------|
| 21 | - | flywheel lower cover | SPCC15&3 | 1 | |
| 20 | - | flywheel upper cover | SPCC1.5 | 1 | |
| 19 | - | conveying assembly | Assembly | 1 | |
| 18 | - | Dust separating system | Assembly | 1 | option |
| 17 | - | Configuration device | Assembly | 1 | |
| 16 | BH10509001210 | Pneumatic spring pin | 45 | 1 | |
| 15 | YW01100010000 | Pneumatic spring L: 420, Length of travel: 45mm | Assembly | 1 | |
| 14 | YW30223055000 | Eggspring/longzine Z2-30x55 | Assembly | 1 | |
| 13 | YW65010000000 | Standard spring washer GB/T93-Longzine | | 13 | |
| 12 | YW60102500000 | Hex bolt GB/T6170 M8x40 | | 12 | |
| 11 | - | Feed box assembly | Assembly | 1 | option |
| 10 | YW09001200500 | Feed box star assembly 16-38-ALL-01 | Assembly | 2 | |
| 9 | YW66081900000 | Flat washer 8x19x2.0 Longzine | | 6 | |
| 8 | YW61082500100 | Inner hex column head screw GB/T6170 M8x40 | | 1 | |
| 7 | - | Hook | SPH6.0 | 1 | |
| 6 | - | Cutting chamber assembly | Assembly | 1 | |
| 5 | YW661224.00000 | Flat washer A grade GB/T93-Longzine | | 8 | |
| 4 | YW65012200000 | Standard spring washer GB/T93-Longzine | | 8 | |
| 3 | YW60126000100 | Hex bolt GB/T6170 M8x40 | | 8 | |
| 2 | - | Pinbar | Assembly | 1 | |
| 1 | - | Risk assembly | Assembly | 1 | |

| | | | | | |
|-------|--------------|-----------------------------------|-----|----|----|
| 标题 | SG-4360 | 图号 | | 比例 | 数量 |
| 设计 | 粉碎机总成 | 材料 | | | |
| 校核 | | 表面要求 | | | |
| 标记 | 更改前 | 更改后 | 更改人 | 日期 | 审核 |
| SHINI | 信昌电热机械股份有限公司 | Shini Plastics Technologies, Inc. | 物料号 | | |

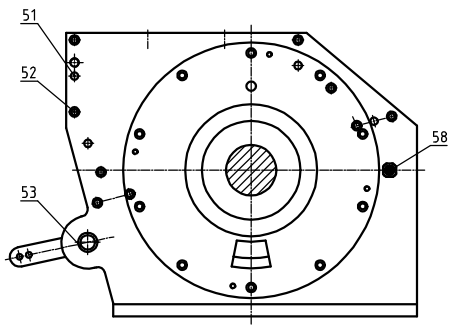
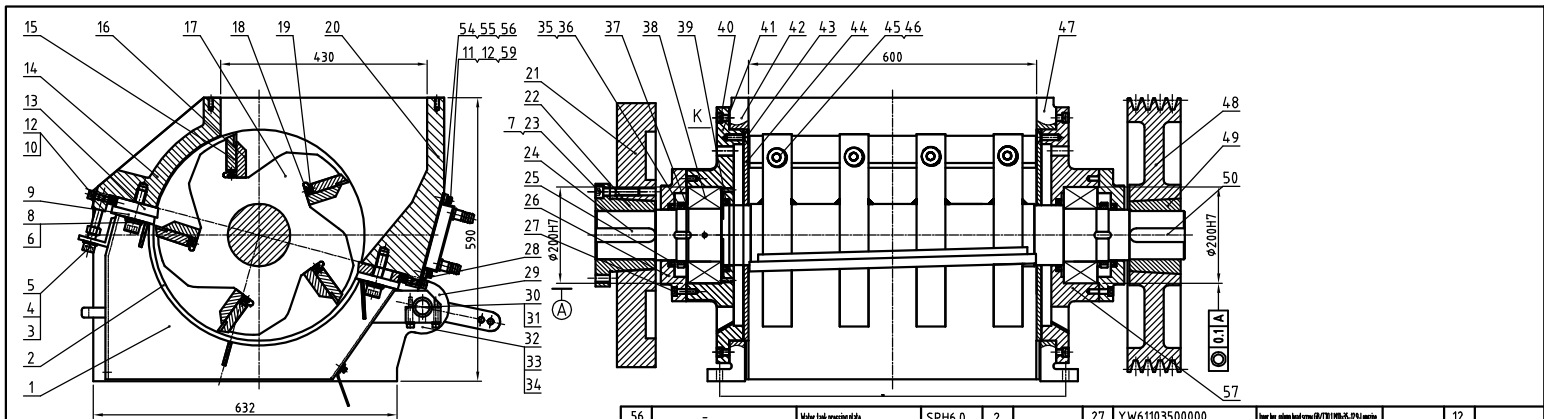


| | | | | | |
|----|-----------------|----------------------------------------------------------|----|----------|--|
| 22 | YW66164.000000 | Washer 16x40S-Longline | | 10 | |
| 21 | YM102037004.00 | Motor M03 370W-4022S-4P B3T E3 1400/600/460V | 1 | option | |
| 20 | YM102030004.00 | Motor M03 300W-200L-4P B3T E3 1400/600/460V | 1 | standard | |
| 19 | YW303020000000 | Taper sleeve 300x hole dia. 955H | 1 | | |
| 18 | YW302004.000000 | Motor belt pulley SPCH04 | 1 | | |
| 17 | YR002800000000 | V belt (SPC-2800) | 4 | | |
| 16 | YW620610000000 | Large cross recessed flat head screw S111 M6x10-Longline | 12 | | |
| 15 | YW660819000000 | Flat washer 18x19x2.0-Longline | 8 | | |

| | | | | | |
|----|-------------------|----------------------------------------------|---------|---|--|
| 14 | YW65008000100 | Standard spring washer Ø170 H-Longline | | 4 | |
| 13 | YW61082000200 | lower hex column head screw Ø10x16-20mm-20mm | | 4 | |
| 12 | - | Belt pulley cover left support | SPH5.0 | 1 | |
| 11 | - | Belt pulley cover right support | SPH5.0 | 1 | |
| 10 | YW64.000800100 | Non metal insert hex lock nut M8 | | 4 | |
| 9 | - | Pulley cover upper part | SPCC15 | 1 | |
| 8 | - | Pulley cover lower part | SPCC15 | 1 | |
| 7 | YW611675000000 | Hex bolt Ø150xM6x35-Longline | | 4 | |
| 6 | YW661630000000 | Flat washer A grade Ø170x16x3-Longline | | 8 | |
| 5 | YW650162000000 | Spring washer 16 | | 8 | |
| 4 | YW60164.00000000 | Hex bolt Ø150xM6x35-Longline | | 4 | |
| 3 | - | Motor metal base | SPH10.0 | 1 | |
| 2 | YW611610000000 | lower hex column head screw Ø10x16-20mm-20mm | | 4 | |
| 1 | YW64.001600000000 | Hex nut Ø150xM6-Longline | | 8 | |

| 序号 | 代号 | 名称 | 材质 | 数量 | 备注 |
|----|-----|-----|-----|----|----|
| | | 制图 | | | |
| | | 设计 | | | |
| | | 校对 | | | |
| | | 审核 | | | |
| 标记 | 更改前 | 更改后 | 更改人 | 日期 | 审核 |
| | | | | | |
| | | | | | |
| | | | | | |

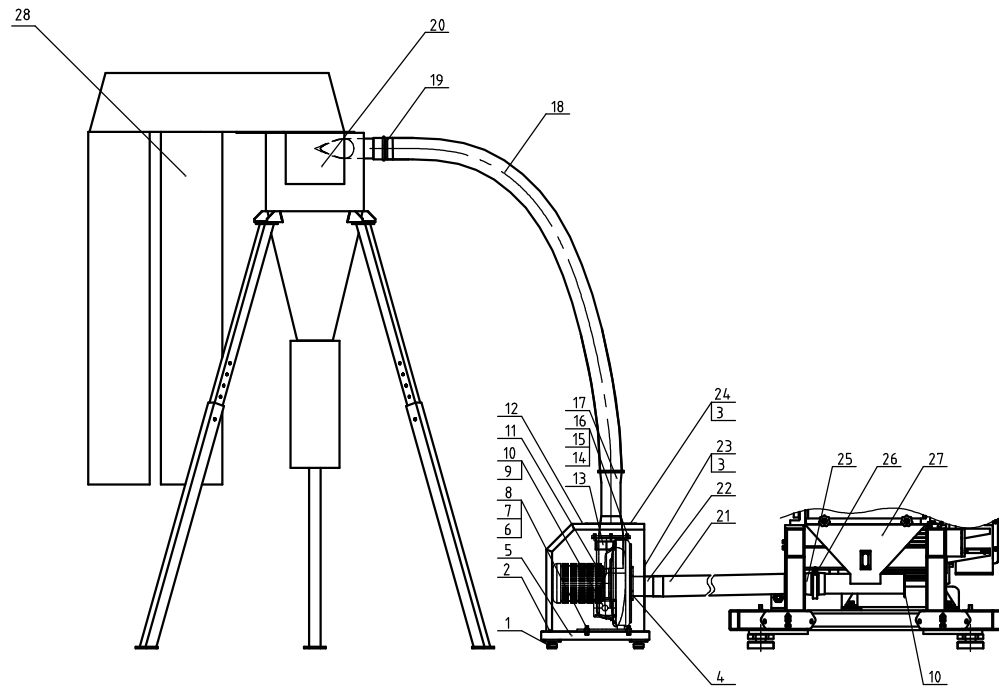
| | | | |
|---------------------------------------------------|---------|------|----|
| 标题 | SG-4360 | 图号 | |
| 主传动装置 | | | |
| 信易电热机械股份有限公司 Shini Plastics Technologies, Inc. | | 比例 | 数量 |
| | | 表面要求 | 材质 |
| | | 物料号 | |



| | | | | | | | | | | | |
|----|------------------|--------------------------------------------------------|--------------------------|-------|---------------------|----|------------------|--------------------------------------------------------|----------|------|---------------------|
| 56 | - | Water tank pressing plate | SPH6.0 | 2 | | 27 | YW61103500000 | hex hex chamfer screw Ø11x11x0.5-0.5 Lorgine | | 12 | |
| 55 | - | Water tank washer | rubber | 1 | | 26 | BW304.36001010 | Bearing cover | QT500-7 | 2 | |
| 54 | - | Water tank | SUS201 2.0 | 1 | | 25 | YR20105100000 | Lip seal ring of inner packed framework rotating shaft | | 2 | FB10513012 |
| 53 | BH124.36001810 | Screen bracket head shaft sleeve | H62 | 2 | | 24 | YW1028124.00000 | Single round head plain key C28x124 | 45 | 1 | |
| 52 | YW61165000000 | hex hex chamfer screw Ø11x11x0.5-0.5 Lorgine | | 18 | | 23 | YW61167500000 | hex hex chamfer screw Ø11x11x0.5-0.5 Lorgine | | 6 | |
| 51 | BH1104.36000010 | hex screw head pin | 45 | 8 | | 22 | BW304.36000910 | Flanged taper sleeve | QT500-7 | 1 | |
| 50 | YW102811500000 | Single round head common flat key C28x115 | 45 | 1 | | 21 | BW304.36000810 | Flange | QT500-7 | 1 | |
| 49 | YW304.04.0100000 | Pulley sleeve hole dia. Ø100 | | 1 | | 20 | BW304.36002410 | hex case block | QT500-7 | 1 | |
| 48 | YW305604.0000000 | Lamp pulley SPC560-4 | | 1 | | 19 | YW64.0806000000 | Hex nut Ø110x110-0.5 Lorgine | 5 | 6/10 | Hex S sliding blade |
| 47 | BW304.36001710 | Right case block | QT500-7 | 1 | | 18 | YW60082500100 | Hex nut Ø130x130-0.5 Lorgine | | 6/10 | Hex S sliding blade |
| 46 | YW650200000000 | Standard spring washer GB/T193.01 | 65Mn | 12/20 | Hex S sliding blade | | | | | | |
| 45 | YW612065000000 | hex hex chamfer screw Ø11x11x0.5-0.5 Lorgine | | 12/20 | Hex S sliding blade | 17 | BH114.36001010 | Blade rest shaft (3 sliding blade) | assembly | 1 | standard |
| 44 | YW424.36001600 | Left and right holder plate | SK5 | 2 | | 16 | BH115.06000610 | Blade rest shaft (5 sliding blade) | assembly | 1 | option |
| 43 | YW61123000100 | hex hex chamfer screw Ø11x11x0.5-0.5 Lorgine | | 6 | | 15 | BH104.36300110 | Rotating blade pressing plate | Q235A | 3/5 | Hex S sliding blade |
| 42 | BW304.36001510 | Left case block | QT500-7 | 1 | | 14 | BW304.36002210 | Rotating blade | SKD11 | 3/5 | Hex S sliding blade |
| 41 | BW304.36001410 | Left bearing base | QT500-7 | 1 | | 13 | YW424.36000700 | Front case block | QT500-7 | 1 | |
| 40 | YW61124.0000000 | hex hex chamfer screw Ø11x11x0.5-0.5 Lorgine | | 20 | | 12 | YW660819000000 | Front blade | SKD11 | 2 | |
| 39 | YR20125150120 | Lip seal ring of inner packed framework rotating shaft | rubber | 2 | | 11 | YW65008000100 | Flat washer 8x19x2.0 Lorgine | 14.0HV | 4 | |
| 38 | YW11232200000 | Spherical roller bearing 23222CA | GCr15 | 2 | | 10 | YW65008000100 | Standard spring washer GB/T193.01 | 65Mn | 20 | |
| 37 | BH104.36013010 | Bearing retainer ring | Q235A | 2 | | 9 | BW304.36002110 | hex hex chamfer screw Ø11x11x0.5-0.5 Lorgine | | 16 | |
| 36 | YW65011000000 | Blading washer for round nut vmt | | 2 | | 8 | YW65205200000 | Fixed blade pressing block | 45 | 2 | |
| 35 | YW64.110200000 | Seal mounted M12x2 | | 2 | | 7 | YW65016200000 | Standard spring washer GB/T193.01 | | 10 | |
| 34 | YW660816000000 | Flat washer A grade GB/T911.8 Lorgine | 14.0HV | 2 | | 6 | YW61207000000 | Standard spring washer GB/T193.01 | 65Mn | 6 | |
| 33 | YW650080001000 | Standard spring washer GB/T193.01 | 65Mn | 2 | | 5 | YW64.0016000000 | hex hex chamfer screw Ø11x11x0.5-0.5 Lorgine | | 10 | |
| 32 | YW610830000000 | hex hex chamfer screw Ø11x11x0.5-0.5 Lorgine | | 2 | | 4 | YW66.164.0000000 | Hex nut GB/T6170 M16- Lorgine | 8H | 3 | |
| 31 | YW3022305500000 | Expansion coupling sleeve Z2-30x55 | | 1 | | 3 | YW611610000000 | Washer 6x6x5- Lorgine | | 3 | |
| 30 | BH114.36001210 | Screen frame head shaft | Flaming-phosphated steel | 2 | | 2 | BL554.36200220 | hex hex chamfer screw Ø11x11x0.5-0.5 Lorgine | | 3 | |
| 29 | - | Thermal spring safety pin | Q235A | 1 | | 1 | | Screen | 45 | 1 | |
| 28 | YW68121000000 | hex hex chamfer screw Ø11x11x0.5-0.5 Lorgine | | 8 | | 1 | | Screen bracket assembly | Q235A | 1 | |

| | | | | | |
|----|-------------------------------------|----------------------------------------------|---------|----|--|
| 59 | YW61082501200 | hex hex chamfer screw Ø11x11x0.5-0.5 Lorgine | | 16 | |
| 58 | Screen bracket fast spring assembly | assembly | | 1 | |
| 57 | BW304.36003210 | Right bearing base | QT500-7 | 1 | |

| 制图 | 版号 | 标题 | 图号 | 比例 | 数量 |
|----|-----|--------------------|-----------------------------------|------|-----|
| 设计 | 核 | 标题 SG-4360 | 图号 | | |
| 校对 | 准 | 粉碎机总成 | | | |
| 审核 | 日期 | SHINI 信易电热机械股份有限公司 | Shini Plastics Technologies, Inc. | 表面要求 | 材质 |
| 标记 | 更改前 | 更改后 | 更改人 | 日期 | 物料号 |

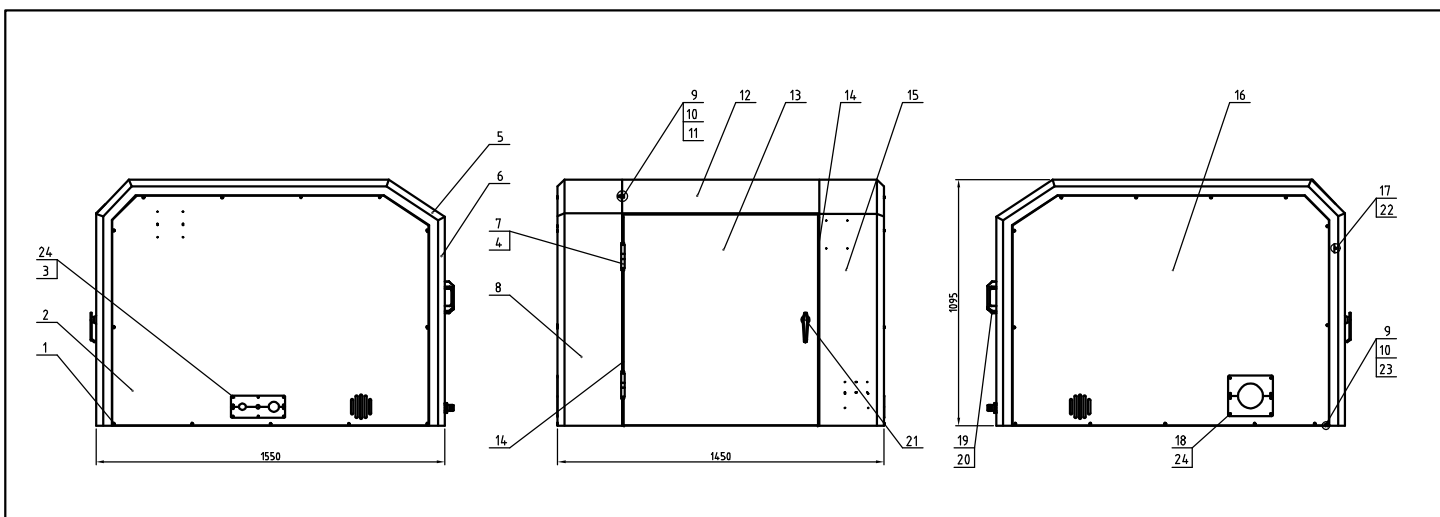


| | | | | | |
|----|-----------------|--------------------------------------|--------------------|----|----|
| 28 | BP82313100044 | Filter cloth bag 4 | 16mm Mesh 498 mesh | 2 | |
| 27 | - | Collective box parts | assembly | 1 | |
| 26 | YW07000400000 | Stainless steel pipe clamp 4" | | 1 | |
| 25 | - | Blower connecting pipe | 201 15mm | 1 | |
| 24 | - | Upper cover plate | SPCC15 | 1 | |
| 23 | - | Side cover plate | SPCC15 | 1 | |
| 22 | - | Side cover connecting pipe | SUS201&SPH80 | 1 | |
| 21 | YR60000400100 | Steel wire hose Ø4x1000 | | 1 | |
| 20 | - | Cyclone separator | assembly | 1 | |
| 19 | YW02000500000 | Stainless steel pipe clamp 5" | SUS | 1 | |
| 18 | YR60000400100 | Steel wire hose 4" | | 3m | |
| 17 | - | Blower flange and connecting pipe | 201 15&SPH80 | 1 | |
| 16 | YW66081900000 | Flat washer 8x19x2.0 Length | | 4 | |
| 15 | YW65008000100 | Standard spring washer Ø19.0 Length | | 4 | |
| 14 | YW61082501200 | Hex hex collar nut Ø17.0x16.5 Length | | 4 | |
| 13 | YR90521300000 | Flat washer 3HL-5213 | | 2 | |
| 12 | - | Blower cover | SPCC15 | 1 | |
| 11 | BM30224.000050 | Conveying blower 2.2KW | | 1 | |
| 10 | YW61051000200 | Disassembly part screw 4x4x10x10 | | 8 | |
| 9 | - | Wire clamp fixed plate | SPCC15 | 2 | |
| 8 | YW65012200000 | Standard spring washer Ø19.0 Length | | 4 | |
| 7 | YW66123200100 | Large washer A grade 6x12x3.0 Length | | 4 | |
| 6 | YW61124.0000000 | Hex hex collar nut Ø17.0x16.5 Length | | 4 | |
| 5 | - | Blower base | welding parts | 1 | |
| 4 | YW62051500000 | Large washer B grade 6x12x3.0 Length | | 6 | |
| 3 | YW62050500000 | Large washer B grade 6x12x3.0 Length | | 10 | |
| 2 | YW62061000000 | Large washer B grade 6x12x3.0 Length | | 10 | |
| 1 | YW03005000000 | Fuel part Ø50 | assembly | 4 | |
| 序号 | 代号 | 名称 | 材质 | 数量 | 备注 |

| | | | |
|----|-----|---------|-----|
| 制图 | 版号 | 标题 | 图号 |
| 设计 | 核准 | SG-4360 | |
| 校对 | 日期 | 送料总成 | |
| 标记 | 更改前 | 更改后 | 更改人 |
| | 日期 | 日期 | 日期 |

SHINI 信易電熱機械股份有限公司
Shini Plastics Technologies, Inc.

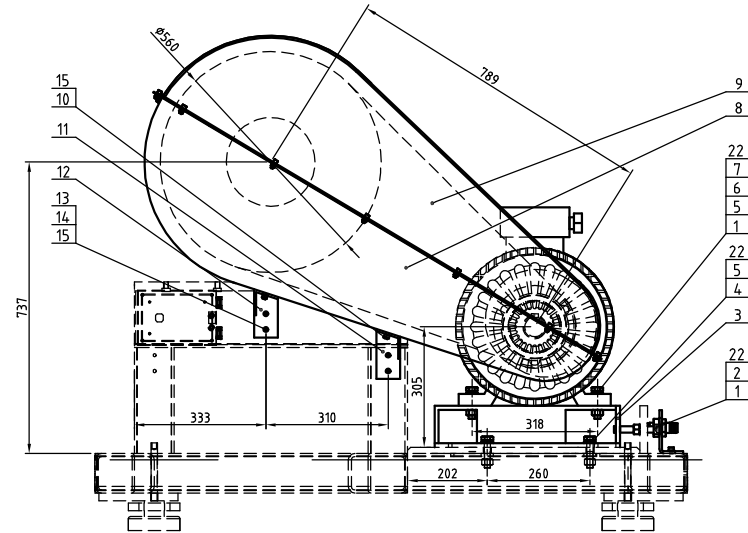
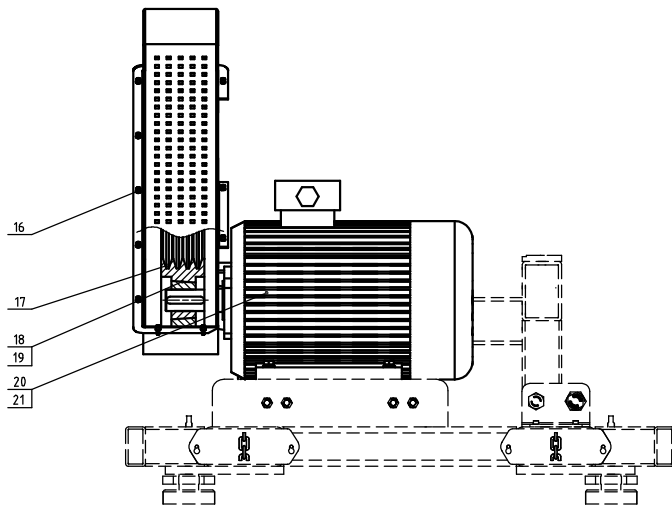
| | |
|------|-----|
| 比例 | 數量 |
| 表面要求 | 物料号 |



| | | | |
|----|---------------|---------------------------------------------------|----|
| 24 | YW62050500000 | Large round flat head screw S316L 16x1.6 Longline | 18 |
| 23 | YW66061800000 | Large washer A grade GB/T96.14 Longline | 32 |
| 22 | YW67481900000 | Cross round flat head long screws S14.8x19 | 11 |
| 21 | YW00004500000 | Door lock | 1 |

| | | | |
|----|----------------|--------------------------------------------------------|-------------------|
| 20 | YW61082000200 | Inner hex. column head screw GB/T17176-B3-Longline | 6 |
| 19 | BW2001200014-0 | No. upper handle L&R | 3 |
| 18 | - | Output pipe wire clamp plate | SPCC1.5 2 |
| 17 | - | Door screen plate | screen plate 15 1 |
| 16 | - | Left cover plate | SPCC2.0 1 |
| 15 | - | Right cover | SPCC2.0 1 |
| 14 | YR10011000100 | Triple compound sealant strip IX011 | 1 10/100mm |
| 13 | - | Door | SPCC2.0 1 |
| 12 | - | Front upper cover | SPCC1.5 1 |
| 11 | YW66641216000 | Large washer A grade GB/T96.14 Longline | 8 |
| 10 | YW65006000100 | Standard spring washer GB/T93.6 Longline | 16 |
| 9 | YW61061601200 | Inner hex. column head screw GB/T17176-B3-Longline | 24 |
| 8 | - | Left cover | SPCC2.0 1 |
| 7 | YW06000400000 | Stainless steel hinge 4" | 2 |
| 6 | - | Rear lower cover plate | SPCC2.0 1 |
| 5 | - | Rear upper cover plate | SPCC2.0 1 |
| 4 | YW61051000100 | Inner hex countersunk head screw GB/T17176-B3-Longline | 16 |
| 3 | - | Power wire clamp plate | SPCC1.5 2 |
| 2 | - | Right cover plate | SPCC2.0 1 |
| 1 | YW62052500000 | Large round flat head screw S316L 16x1.6 Longline | 26 |

| 序号 | 代号 | 名称 | 材质 | 数量 | 备注 |
|----|---------|---------------------------------------------------|----|------|----|
| | SG-4360 | 护罩部件 | | | |
| 制图 | 版号 | 标题 | 图号 | 比例 | 数量 |
| 设计 | 核准 | 护罩部件 | | 1:1 | 材质 |
| 校对 | | 信昂电热机械股份有限公司 Shini Plastics Technologies, Inc. | | 表面要求 | |
| 标记 | 日期 | | | 物料号 | |

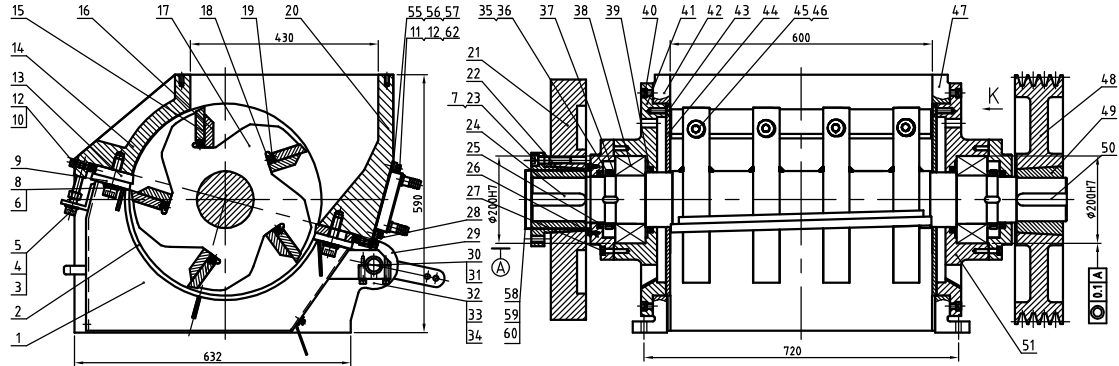


| | | | | | |
|----|---------------|----------------------------------------------------------|--|----|----------|
| 22 | YW66164000000 | Washer 16x16x3-Longzine | | 10 | |
| 21 | YM10203700400 | Motor W8 39W-WZSS-4P BBT E3 400/60/40V | | 1 | option |
| 20 | YM10203000400 | Motor W8 30W-ZSL-4P BBT E3 400/60/40V | | 1 | standard |
| 19 | YW30302000000 | Taper stone 320 (hole dia: 35.5) | | 1 | |
| 18 | YW30200400000 | Motor belt pulley sprockets | | 1 | 3 |
| 17 | YR00280000000 | V belt (SPC-2800) | | 4 | 2 |
| 16 | YW62061000000 | Large cross recessed flat head screw S111 Hex Q-Longzine | | 12 | 1 |
| 15 | YW66081900000 | Flat washer 18x19x2.0-Longzine | | 8 | |

| | | | | | |
|----|---------------|-----------------------------------------------|---------|---|--|
| 14 | YW65008000100 | Standard spring washer 8/1718-Longzine | | 4 | |
| 13 | YW61082000200 | Inner hex column head screw 8/1718x8-Longzine | | 4 | |
| 12 | - | Belt pulley cover left support | SPH5.0 | 1 | |
| 11 | - | Belt pulley cover right support | SPH5.0 | 1 | |
| 10 | YW64000800100 | Non metal insert hex lock nut M8 | | 4 | |
| 9 | - | Pulley cover upper part | SPCC15 | 1 | |
| 8 | - | Pulley cover lower part | SPCC15 | 1 | |
| 7 | YW61167500000 | Hex bolt 8/1718x16x5-E3-Longzine | | 4 | |
| 6 | YW66163000000 | Flat washer A grade 8/1718x16x3-Longzine | | 8 | |
| 5 | YW65016200000 | Spring washer 16 | | 8 | |
| 4 | YW60164000000 | Hex bolt 8/1718x16x4-E3-Longzine | | 4 | |
| 3 | - | Motor mount base | SPH10.0 | 1 | |
| 2 | YW61161000000 | Inner hex column head screw 8/1718x8-Longzine | | 4 | |
| 1 | YW64001600000 | Hex nut 8/1718 M5-Longzine | | 8 | |

| 标记 | 更改前 | 更改后 | 更改人 | 日期 | 审核 | 日期 | 标题 | 图号 | 比例 | 数量 | 材质 | 表面要求 | 物料号 |
|----|-----|-----|-----|----|----|----|------------------|----|----|----|----|------|-----|
| | | | | | | | SG-4360 主传动装置 | | | | | | |

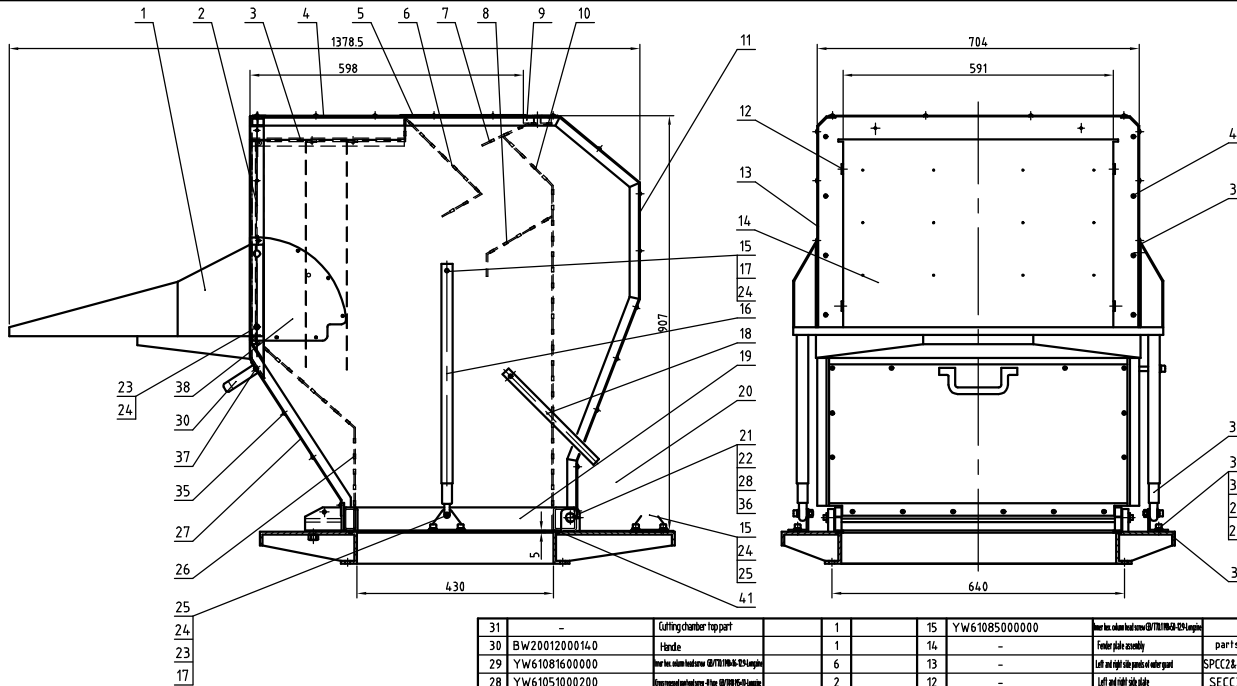
SHINI 信昌電熱機械股份有限公司
Shini Plastics Technologies, Inc.



| | | | | | | | | | | |
|----|-----------------|--------------------------------------------------------|------------|-------|------------------------------|----|-----------------|--------------------------------------------------------|---------|----------|
| 58 | YW61061601200 | Inner hex column head screw GB/T11646-25 Langle | | 4 | cancel draw out with typical | 28 | YW68121000000 | Inner hex flat head screw GB/T11642-Langle | | 8 |
| 57 | - | Water tank prosthetic | SPH6.0 | 2 | | 27 | YW61104.000200 | Inner hex column head screw GB/T11646-25 Langle | | 12 |
| 56 | - | Water tank washer | rubber | 1 | | 26 | BW304.36001010 | Bearing cover | QT500-7 | 2 |
| 55 | - | Water tank | SUS201 2.0 | 1 | | 25 | YR20105100000 | Lip seal ring of inner packed framework rotating shaft | | 2 |
| 54 | BH124.36001810 | Screen bracket head shaft sleeve | H62 | 2 | | 24 | YW1028124.0000 | Single round head plain key C28x12x4 | 4.5 | 1 |
| 53 | YW61165000000 | Inner hex column head screw GB/T11646-25 Langle | | 18 | | 23 | YW61167500000 | Inner hex column head screw GB/T11646-25 Langle | | 6 |
| 52 | BH1104.3600010 | Inner screw round pin | 4.5 | 8 | | 22 | BW304.36000910 | Hydraulic taper sleeve | QT500-7 | 1 |
| 51 | BW304.36003210 | Right bearing base | QT500-7 | 1 | | 21 | BW304.36000810 | Hydraulic | QT500-7 | 1 |
| 50 | YW10281150000 | Single round head common flat key C28x11x5 | 4.5 | 1 | | 20 | BW304.360002410 | Bear case block | QT500-7 | 1 |
| 49 | YW304.04.010000 | Pulley sleeve hole dia.φ100 | | 1 | | 19 | YW64.0806000000 | Hex nut GB/T6170 M6-Langle | 6/10 | 16 |
| 48 | YW305604.000000 | Big taper sleeve SPC560x4 | | 1 | | 18 | YW60082500100 | Hex nut GB/T6170 M6.5-Langle | 6/10 | 16 |
| 47 | BW304.36001710 | Right case block | QT500-7 | 1 | | 17 | BH114.36001010 | Blade rest shaft (3 rotating blade) assembly | 1 | standard |
| 46 | YW65020000000 | Standard spring washer GB/T193 M | 12/20 | 2 | 16's rotating blade | | BH114.36001610 | Blade rest shaft (5 rotating blade) assembly | 1 | option |
| 45 | YW61206500000 | Inner hex column head screw GB/T11646-25 Langle | | 12/20 | 16's rotating blade | 16 | BH11506000610 | Rotating blade pressing plate | Q235A | 3/5 |
| 44 | YW424.36001600 | Left and right holder plate | 65Mn | 2 | | 15 | BH104.36300110 | Rotating blade | SKD11 | 3/5 |
| 43 | YW61123000100 | Inner hex column head screw GB/T11646-25 Langle | | 6 | | 14 | BW304.36002210 | Front case block | QT500-7 | 1 |
| 42 | BW304.36001510 | Left case block | QT500-7 | 1 | | 13 | YW424.36000700 | Fixed blade | SKD11 | 2 |
| 41 | BW304.36001410 | Left bearing base | QT500-7 | 2 | | 12 | YW660819000000 | Flat washer 6x19x2.0-Langle | 14.0HV | 20 |
| 40 | YW61124.0000000 | Inner hex column head screw GB/T11646-25 Langle | | 20 | | 11 | YW65008000100 | Standard spring washer GB/T193 Langle | 65Mn | 16 |
| 39 | YR20125150120 | Lip seal ring of inner packed framework rotating shaft | rubber | 2 | FB12515012 | 10 | YW610865000000 | Inner hex column head screw GB/T11646-25 Langle | | 4 |
| 38 | YW11232220000 | Spherical roller bearing 23222CE | GCr15 | 2 | | 9 | BW304.36002110 | Fixed blade pressing block | 4.5 | 2 |
| 37 | BH104.36013010 | Bearing washer | Q235A | 2 | | 8 | YW652052000000 | Standard spring washer GB/T193 M | | 10 |
| 36 | YW65011000000 | Rotating washer for round nut GB/T6180 M16 | | 2 | | 7 | YW650162000000 | Standard spring washer GB/T193 Langle | 65Mn | 6 |
| 35 | YW64.110200000 | Small round nut GB/T6180 M16x2-45 steel | | 2 | | 6 | YW612070000000 | Inner hex column head screw GB/T11646-25 Langle | | 10 |
| 34 | YW660816000000 | Flat washer A grade GB/T193 Langle | | 2 | | 5 | YW64.0016000000 | Hex nut GB/T6170 M6-Langle | | 3 |
| 33 | YW65008000100 | Standard spring washer GB/T193 Langle | | 2 | | 4 | YW66164.0000000 | Washer Xk40S-Langle | | 3 |
| 32 | YW61083000000 | Inner hex column head screw GB/T11646-25 Langle | | 2 | | 3 | YW611610000000 | Inner hex column head screw GB/T11646-25 Langle | | 3 |
| 31 | YW30223055000 | Expansion coupling sleeve Z2-30x55 | | 1 | | 2 | BL554.36200220 | Screen #12 | 4.5 | 1 |
| 30 | BH114.36001210 | Screen frame round shaft | Cr12Mo1 | 1 | | 1 | - | Screen bracket assembly | Q235A | 1 |
| 29 | - | Pneumatic spring spring pin | Q235A | 1 | | | | | | |

| | | | | | |
|----|---------------|-------------------------------------------------|----------|----|------------------------------|
| 62 | YW61082501200 | Inner hex column head screw GB/T11646-25 Langle | | 16 | |
| 61 | - | Screen bracket ball spring assembly | assembly | 1 | |
| 60 | - | Left end plate | SPCC1.5 | 1 | cancel draw out with typical |
| 59 | YW65006000100 | Standard spring washer GB/T193 Langle | | 4 | cancel draw out with typical |

| | | | | | | |
|----|-----|---------------------------------------------------------|----|------|-----|----|
| 制图 | 版号 | 标题 | 图号 | 比例 | 数量 | 备注 |
| 设计 | 核 | SG-4 360B | | 1:1 | 1 | |
| 校对 | 准 | 粉碎室总成 | | | | |
| 审核 | | SHINI 信易电热机械股份有限公司 Shini Plastics Technologies, Inc. | | 表面要求 | 物料号 | |
| 标记 | 更改前 | | | 更改后 | 更改人 | 日期 |

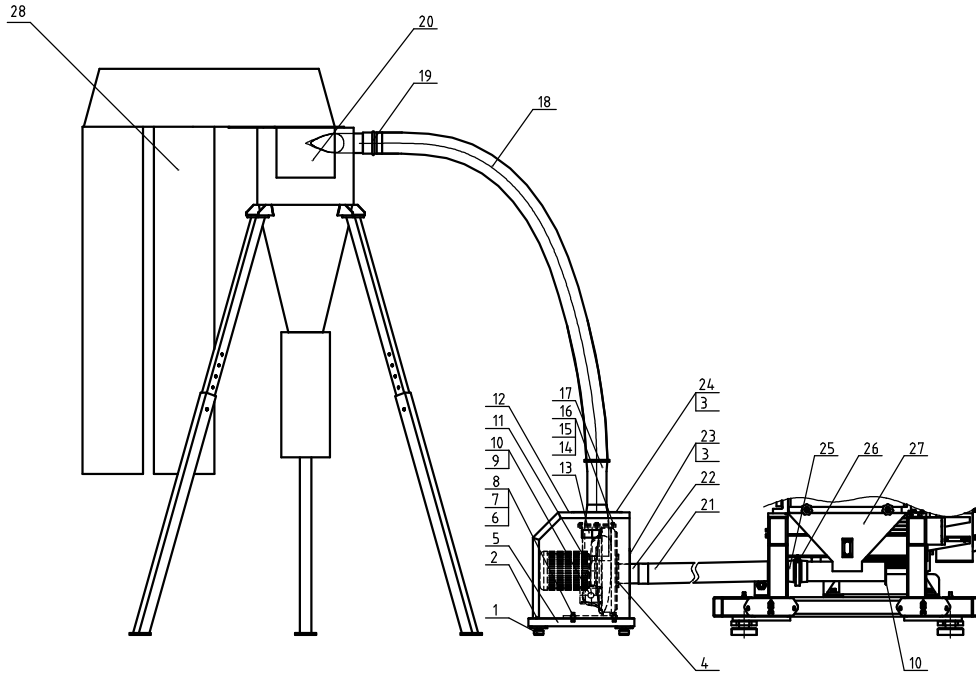


| | | | | | | | | | | | | | | |
|----|-----------------|-------------------------------------------------|------------|-------|----|-----------------|-------------------------------------------|--------|----|---|---|--------------------------------|------------|---|
| 41 | YR90000600400 | Black rubber sealing strip (16x5mm) | | 2.15m | 25 | YW64.0008000100 | Flat metal insert for lid nut (GB/T10719) | 8H | 4 | 9 | - | Lid plate | SPH12.0 | 1 |
| 40 | YW61061601200 | Inner hex nut (steel core) (M6x35) Longpin | | 8 | 24 | YW660819000000 | Flat washer (steel core) (GB/T10719) | 14.0HV | 24 | 8 | - | Inner and middle folding plate | SECC3.0 | 1 |
| 39 | - | Front part front plate (steel hold) | SUS201 | 1 | 23 | YW610835000000 | Inner hex nut (steel core) (GB/T10719) | 33H | 4 | 7 | - | Inner and upper folding plate | SECC3.0 | 1 |
| 38 | - | Front part front plate (steel hold) | SUS201 | 1 | 22 | YW680510000000 | Inner hex nut (steel core) (GB/T10719) | 33H | 2 | 6 | - | Top and middle folding plate | SECC3.0 | 1 |
| 37 | YW61082000200 | Inner hex nut (steel core) (M6x30) | | 2 | 21 | BH104.36001910 | Front box rotatory shaft | Q235A | 1 | 5 | - | Front box plate | SPCC2.0 | 1 |
| 36 | - | Front box rotatory shaft pressing plate | SUS201 3.0 | 2 | 20 | BH104.36001810 | Support pipe 2 | Q235A | 1 | 4 | - | Top holding plate | SECC3.0 | 1 |
| 35 | YW674.819000000 | Gas support bracket (Alloy) (type: S14.1) (R=7) | | 77 | 19 | - | Square pipe frame | Q235A | 1 | 3 | - | Top holding plate | SECC3.0 | 1 |
| 34 | YW01060000000 | Gas spring 600N | | 2 | 18 | BH104.36000210 | Support pipe 1 | Q235A | 1 | 2 | - | Upper part | SPH4.0 | 1 |
| 33 | - | Gas spring support seal | | 3 | 17 | YW64.0806000000 | Hex nut (GB/T10719) Longpin | | 6 | 1 | - | Front part | SPCC2&SPH4 | 1 |
| 32 | YW65008000100 | Standard spring washer (GB/T10719) Longpin | 65Mn | 6 | 16 | BH104.36001510 | Gas spring sleeve | Q235A | 2 | | | | | |

| 制图 | 版号 | 标题 | 图号 | 比例 | 数量 | 备注 |
|----|-----|---------|-----|-----|----|----|
| 设计 | | SG-4360 | | 1:1 | | |
| 校对 | | 进料箱总成 | | | | |
| 审核 | | | | | | |
| 标记 | 更改前 | 更改后 | 更改人 | 日期 | 日期 | |

SHINI 信昂电热机械股份有限公司
Shini Plastics Technologies, Inc.

表面要求
物料号



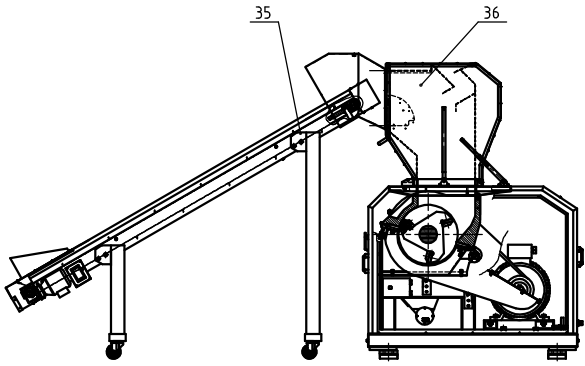
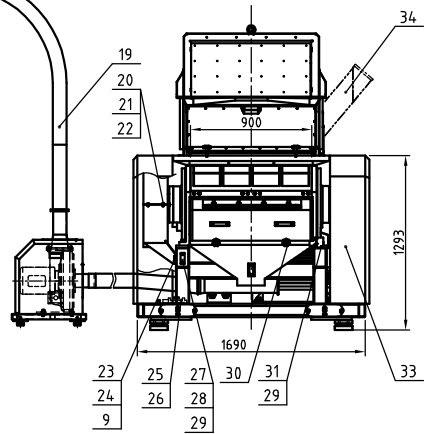
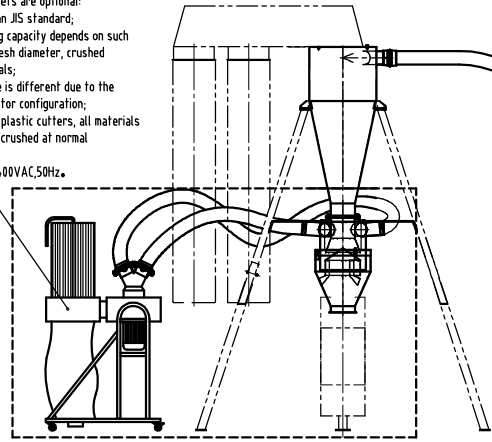
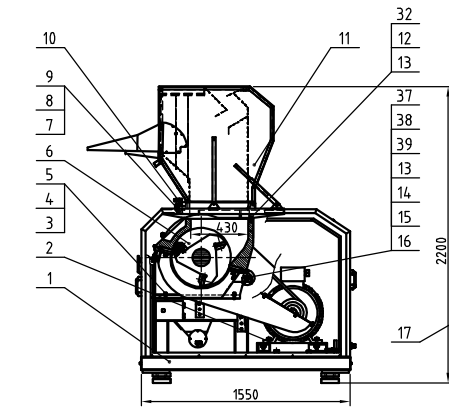
| | | | | | |
|----|---------------|------------------------------------------|---------------------|----|----|
| 28 | BP82313100044 | Filter cloth bag 4 | Nylon Mesh 480 mesh | 2 | |
| 27 | - | Collective box parts | assembly | 1 | |
| 26 | YW07000400000 | Stainless steel pipe clamp 4" | | 1 | |
| 25 | - | Blower connecting pipe | 201 15mm | 1 | |
| 24 | - | Upper cover plate | SPCC15 | 1 | |
| 23 | - | Side cover plate | SPCC15 | 1 | |
| 22 | - | Side cover connecting pipe | SUS201&SPHR0 | 1 | |
| 21 | YR60000400100 | Steel wire hose φ4x1000 | | 1 | |
| 20 | - | Cyclone separator | assembly | 1 | |
| 19 | YW02000500000 | Stainless steel pipe clamp 5" | SUS | 1 | |
| 18 | YR60000400100 | Steel wire hose 4" | | 3m | |
| 17 | - | Blower flange and connecting pipe | 201 15&SPHR0 | 1 | |
| 16 | YW66081900000 | Flat washer 6x19x2.6 Longsize | | 4 | |
| 15 | YW65008000100 | Standard spring washer φ8/19 4-Longsize | | 4 | |
| 14 | YW61082501200 | Washer column nut φ8/19x4-Longsize | | 4 | |
| 13 | YR90521300000 | Electric blade 3ML-5213 | | 2 | |
| 12 | - | Blower cover | SPCC15 | 1 | |
| 11 | BM30224000050 | Conveying blower 2.2KW | | 1 | |
| 10 | YW61051000200 | Decompression plate φ100x100-Longsize | | 2 | |
| 9 | - | Wire clamp fixed plate | SPCC15 | 8 | |
| 8 | YW65012200000 | Standard spring washer φ8/19 12-Longsize | | 4 | |
| 7 | YW66123200100 | Large washer 6 grade φ8/19x12-Longsize | | 4 | |
| 6 | YW61124000000 | Washer column nut φ8/19x4-Longsize | | 4 | |
| 5 | - | Blow base | welding parts | 1 | |
| 4 | YW62051500000 | Impressment of fastener 50M 15-Longsize | | 6 | |
| 3 | YW62050500000 | Impressment of fastener 50M 5-Longsize | | 10 | |
| 2 | YW62061000000 | Impressment of fastener 50M 6-Longsize | | 10 | |
| 1 | YW03005000000 | Foot pad φ50 | assembly | 4 | |
| 序号 | 代号 | 名称 | 材质 | 数量 | 备注 |

| | | | | | |
|----|-----|------|-----|------|----|
| 制图 | 版号 | 标题 | 图号 | 比例 | 数量 |
| 设计 | 核准 | 送料总成 | | 1:1 | 材质 |
| 校对 | 日期 | | | 表面要求 | |
| 审核 | 日期 | | | 物料号 | |
| 标记 | 更改前 | 更改后 | 更改人 | 日期 | 日期 |

SHINI 信昌電熱機械股份有限公司
Shini Plastics Technologies, Inc.

| Standard weight(kg) | Noise level dB(A) | Max. cutting ability (kg/hr) | Cutting Chamber Size (mm) | Rotating Cutter Qty. | Fixed Cutter Qty. | Cutter Material | Conveying blower open(m³/min) | Main Shaft Speed (r.p.m) | Motor Power (kW, 50/60Hz) | Ver. No. |
|---------------------|-------------------|------------------------------|---------------------------|----------------------|-------------------|-----------------|-------------------------------|--------------------------|---------------------------|----------|
| 2730(2780) | 105~110 | 1000 | 430×900 | 3x2(5x2) | 2x2 | SKD11 | 2.2 | 525 | 37(45) | Ver.E |

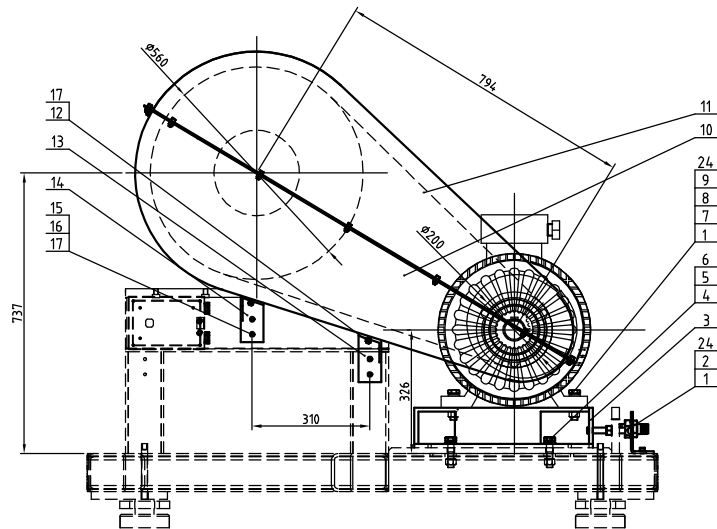
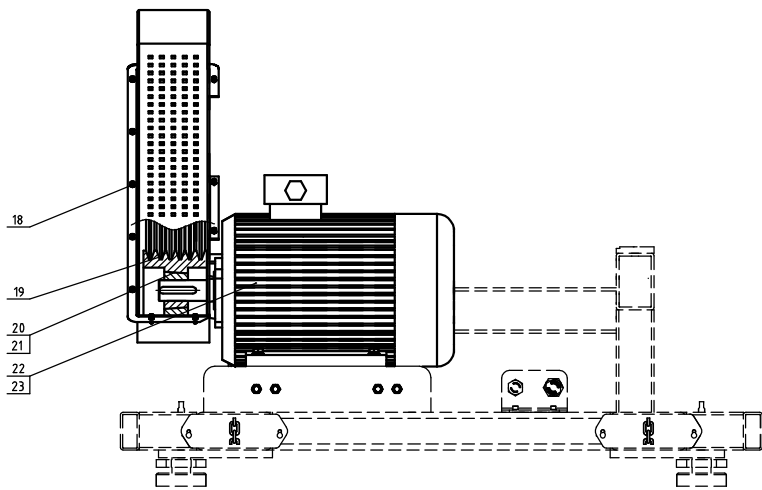
Notes: 1) Values in brackets are optional;
 2) SKD11 is the Japan JIS standard;
 3) The max. crushing capacity depends on such factors as the screen mesh diameter, crushed material size and materials;
 4) The cutting noise is different due to the cutting materials and motor configuration;
 5) In order to avoid plastic cutters, all materials to be crushed should be crushed at normal temperature;
 6) Machine power: 3φ 400VAC, 50Hz.



| | | | | | | | | | | |
|----|-----------------|---------------------------------------------|----------|----|--------|--|--|--|--|--|
| 39 | YW64001000100 | Hex nut GB/T6170 M10 | | 1 | | | | | | |
| 38 | YW61106500000 | Hex column head screw M10x45 | | 1 | | | | | | |
| 37 | YW66102500000 | Flat washer 10x25x1.5 Longzine | | 2 | | | | | | |
| 36 | - | With conveyor feed box assembly | Assembly | 1 | option | | | | | |
| 35 | - | Conveyor | Assembly | 1 | option | | | | | |
| 34 | - | Side feed box assembly | Assembly | 1 | option | | | | | |
| 33 | - | Cover parts | Assembly | 1 | | | | | | |
| 32 | YW66102000100 | Flat washer A grade 10(11x20x2) | | 12 | | | | | | |
| 31 | - | Switch fixed plate | SPH4.0 | 1 | | | | | | |
| 30 | YR40083500000 | Star handle B M8-35 | Assembly | 2 | | | | | | |
| 29 | YW61051000200 | Cross recessed pan head screw Ø10x100 | | 4 | | | | | | |
| 28 | JT10014.0000000 | Inner hex. spanner M16 large | | 1 | | | | | | |
| 27 | - | Hex. spanner fixed plate | SPCC2.0 | 1 | | | | | | |
| 26 | YR40084500000 | Star handle B M8-35 | Assembly | 2 | | | | | | |
| 25 | BH10439001910 | Pressfitting knife jig | Assembly | 1 | | | | | | |
| 24 | YW65008000100 | Standard spring washer Ø119# Longzine | | 4 | | | | | | |
| 23 | YW61081600000 | Inner hex column head screw Ø10x160 | | 4 | | | | | | |
| 22 | YW62061000000 | Large cross recessed pan head screw Ø20x100 | | 6 | | | | | | |

| | | | | | | | | | | |
|----|-----------------|-------------------------------------------------|-----------|----|--------|--|--|--|--|--|
| 21 | - | flywheel lower cover | SPCC1.5#3 | 1 | | | | | | |
| 20 | - | flywheel upper cover | SPCC1.5 | 1 | | | | | | |
| 19 | - | conveying assembly | Assembly | 1 | | | | | | |
| 18 | - | Dust separating system | Assembly | 1 | option | | | | | |
| 17 | - | Configuration device | Assembly | 1 | | | | | | |
| 16 | BH10509001210 | Pneumatic spring pin | 45 | 1 | | | | | | |
| 15 | YW0110014.00000 | Pneumatic spring L: 420, length of travel: 90mm | Assembly | 1 | | | | | | |
| 14 | YW30223055000 | Springing plate Z2-30x55 | Assembly | 1 | | | | | | |
| 13 | YW65010000000 | Standard spring washer Ø119# Longzine | | 13 | | | | | | |
| 12 | YW60102500100 | Hex bolt Ø10x100 | | 12 | | | | | | |
| 11 | - | Feed box assembly | Assembly | 1 | option | | | | | |
| 10 | YW09001200500 | Feed box star assembly M12 | Assembly | 2 | | | | | | |
| 9 | YW66081900000 | Flat washer B grade Ø19x20 Longzine | | 6 | | | | | | |
| 8 | YW61082500100 | Inner hex column head screw Ø10x25 | | 1 | | | | | | |
| 7 | - | Hook | SPH6.0 | 1 | | | | | | |
| 6 | - | Cutting chamber assembly | Assembly | 1 | | | | | | |
| 5 | YW661224.00000 | Flat washer A grade Ø119x24 Longzine | | 8 | | | | | | |
| 4 | YW65012200000 | Standard spring washer Ø119# Longzine | | 8 | | | | | | |
| 3 | YW60126000100 | Hex bolt Ø10x126 | | 8 | | | | | | |
| 2 | - | Holder | Assembly | 1 | | | | | | |
| 1 | - | Roll assembly | Assembly | 1 | | | | | | |

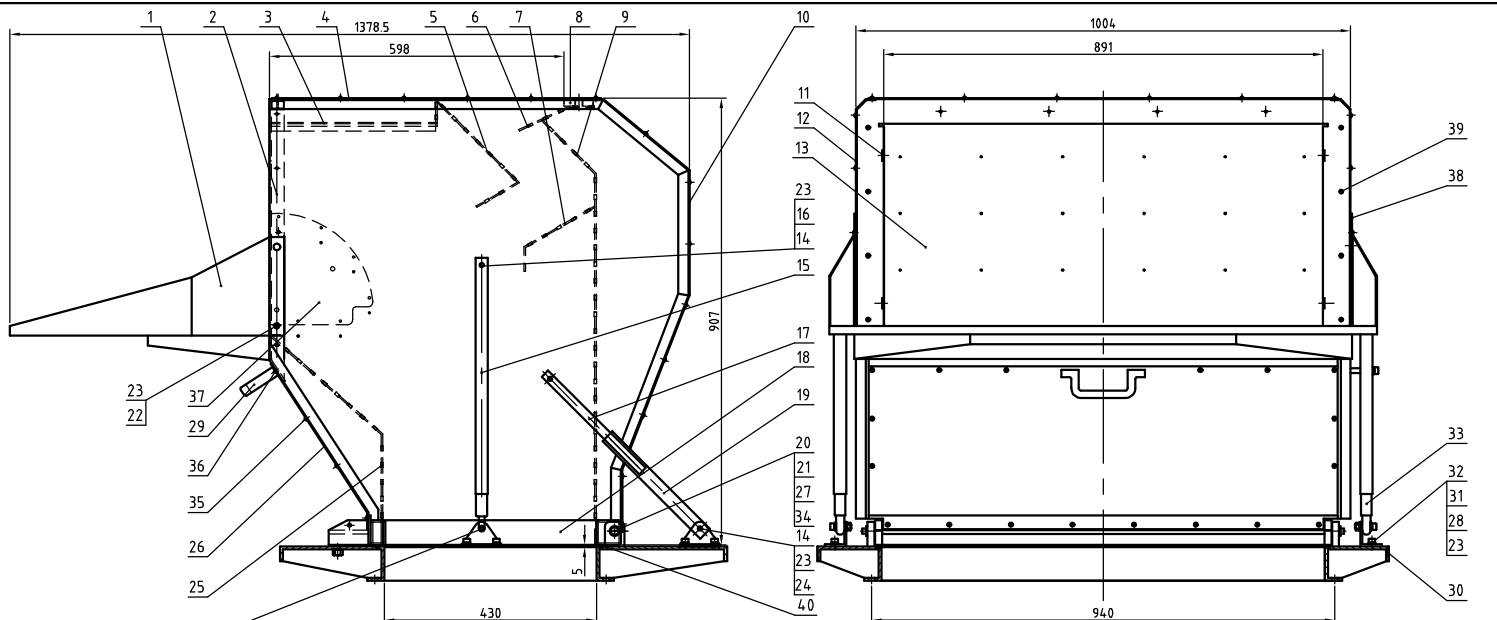
| | | | | | |
|----|-----|-----------------------------------|----|------|----|
| 制图 | 版号 | 标题 | 图号 | 比例 | 数量 |
| 设计 | 更改 | SG-4390 | | 1:1 | |
| 校对 | 核准 | 粉碎机总成 | | 材料 | |
| 审核 | 日期 | SHINI 信易电热机械股份有限公司 | | 表面要求 | |
| 标记 | 更改前 | Shini Plastics Technologies, Inc. | | 物料号 | |
| | 更改后 | | | | |
| | 更改人 | | | | |
| | 日期 | | | | |



| | | | | | |
|----|---------------|---------------------------------------------------------|--|----|----------|
| 24 | YW66164000000 | Washer 16x16x5-Longline | | 6 | |
| 23 | YM10204500400 | Motor W20450W4WZS-AP B3T E3 400V/60/40V | | 1 | option |
| 22 | YM10203700400 | Motor W20370W4WZS-AP B3T E3 400V/60/40V | | 1 | standard |
| 21 | YW30353506000 | Taper sleeve 35x35 hole dia. φ40 | | 1 | |
| 20 | YW30200600000 | Motor belt pulley SPCHas | | 1 | |
| 19 | YR00280000000 | V belt (SPC-2800) | | 6 | |
| 18 | YW62061000000 | Larger size raised flat head screw S1111 M6x10-Longline | | 12 | |
| 17 | YW66081900000 | Flat washer 18x19x2.0-Longline | | 8 | |
| 16 | YW65008000100 | Standard spring washer GB/T193.8-Longzhe | | 4 | |
| 15 | YW61082000200 | Inner hex column head screw GB/T10.9-20-Longline | | 4 | |

| | | | | | |
|----|----------------|--------------------------------------------------|---------|---|--|
| 14 | - | Belt pulley cover left support | SPH5.0 | 1 | |
| 13 | - | Belt pulley cover right support | SPH5.0 | 1 | |
| 12 | YW64.000800100 | Non metal insert hex lock nut M6 | | 4 | |
| 11 | - | Pulley cover upper part | SPCC1.5 | 1 | |
| 10 | - | Pulley cover lower part | SPCC1.5 | 1 | |
| 9 | YW61167500000 | Hex bolt GB/T3091.6-20-Longline | | 4 | |
| 8 | YW66163000000 | Flat washer A grade GB/T193.8-20-Longline | | 8 | |
| 7 | YW65016200000 | Spring washer 16 | | 4 | |
| 6 | YW66203700000 | Flat washer C grade GB/T193.20 | | 4 | |
| 5 | YW65205200000 | Standard spring washer GB/T193.8-Longline | | 4 | |
| 4 | YW60206000000 | Hex bolt GB/T3091.6-20-Longline | | 4 | |
| 3 | - | Motor mount base | SPH10.0 | 1 | |
| 2 | YW61161000000 | Inner hex column head screw GB/T10.9-20-Longline | | 4 | |
| 1 | YW64.001600000 | Hex nut GB/T6170-M6-Longline | | 8 | |

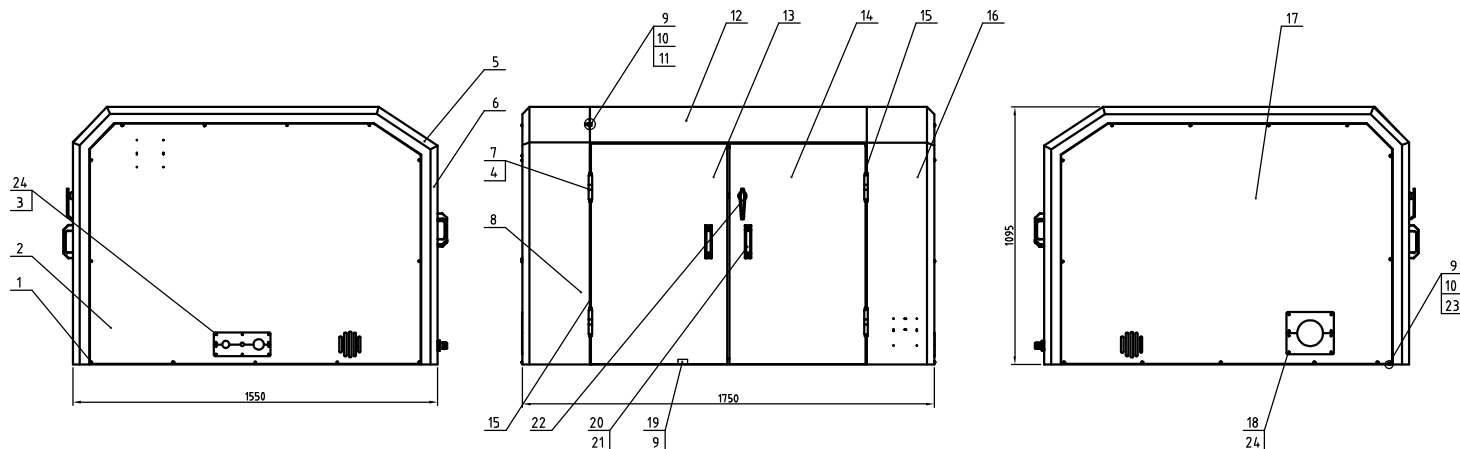
| 标记 | 更改前 | 更改后 | 更改人 | 日期 | 审核 | 日期 | 版号 | 核准 | 日期 | 标题 | 图号 | 比例 | 数量 | 材质 | 备注 |
|----|-----|-----|-----|----|----|----|----|----|----|-----------------------------------------------------------------|-----|----|------|----|----|
| | | | | | | | | | | SG-4390 | | | | | |
| | | | | | | | | | | 主传动装置 | | | | | |
| | | | | | | | | | | 信易电热机械股份有限公司 Shini Plastics Technologies, Inc. | | | 表面要求 | | |
| | | | | | | | | | | | 物料号 | | | | |



| | | | | | | | | |
|----|---------------|-----------------------------------------------|----------------|----|---------------|----------------|-----------------------------------------------|------------|
| 35 | YW67481900000 | Extruded polystyrene (EPS) pipe | 85 | 17 | BH10436000210 | Support pipe 1 | Q235A | 1 |
| 34 | - | Feed base rotating shaft pressing plate | SUS201 3.0 | 2 | 16 | YW64080600000 | Hex nut GB/T6170 M8-Longline | 6 |
| 33 | YW01060000000 | Air spring stroke 250, L=400mm | assembly | 2 | 15 | BH10436001510 | Gas spring sleeve | Q235A |
| 32 | - | Gas spring support seal | SPH4 | 3 | 14 | YW61085000000 | Hex hex column head screw GB/T108-03-Longline | 4 |
| 31 | YW65008000100 | Standard spring washer GB/T93-Longline | 6 | 13 | - | - | Feeder plate assembly | parts |
| 30 | - | Cutting chamber neck part | SPH6&SPH14 | 1 | 12 | - | Left and right side panels of water panel | SPCC2&SPH5 |
| 29 | BW20012000140 | Handle | aluminum alloy | 1 | 11 | - | Left and right side plate | SECC3.0 |
| 28 | YW61081600000 | Hex hex column head screw GB/T108-03-Longline | 6 | 10 | - | - | Feeder cover plate | SPCC2.0 |
| 27 | YW61051000200 | Extruded polystyrene (EPS) pipe | 2 | 9 | - | - | Feeder holding plate | SECC3.0 |
| 26 | - | Outer front plate | SPCC2.0 | 1 | 8 | - | Net plate | SPH12.0 |
| 25 | - | Front holding plate | SECC3.0 | 1 | 7 | - | Rear and middle holding plate | SECC3.0 |
| 24 | YW64000800100 | Hex metal insert hex lock nut GB/T898.1-M8 | 4 | 6 | - | - | Rear and upper holding plate | SECC3.0 |
| 23 | YW66081900000 | Flat washer GB/T92.0-Longline | 24 | 5 | - | - | Top and middle holding plate | SECC3.0 |
| 22 | YW61083500000 | Hex hex column head screw GB/T108-03-Longline | 4 | 4 | - | - | Top cover plate | SPCC2.0 |
| 39 | YW61061601200 | Hex hex column head screw M6x12-Longline | 8 | 3 | - | - | Top holding plate | SECC3.0 |
| 38 | - | Feeder part front plate (hex hole) | SUS201 | 1 | 2 | - | Upper part | SPH4.0 |
| 37 | - | Feeder part front plate (hex hole) | SUS201 | 1 | 1 | - | Feeder part | SPCC2&SPH4 |
| 36 | YW61082000200 | Hex hex column head screw M8x20 | 2 | 1 | - | - | Support pipe 2 | Q235A |
| | | | 18 | | | | Square pipe frame | Q235A |

| 标题 | 图号 | 比例 | 数量 |
|-----------------------------------|----|------|-----|
| SG-4390 | | | |
| 进料箱总成 | | | |
| SHINI 信易电热机械股份有限公司 | | 表面要求 | 物料号 |
| Shini Plastics Technologies, Inc. | | | |

| 制图 | 版号 | 日期 |
|----|-----|-----|
| | | |
| 设计 | 核 | |
| 校对 | 准 | |
| 标记 | 更改前 | 更改后 |
| | 更改人 | 日期 |
| | 审核 | 日期 |



| | | | | | |
|----|---------------|-----------------------------------------------------------|---------|----|-----------|
| 20 | BW20012000140 | As spare handle 1211 | | 5 | |
| 19 | - | Output pipe wire clamp plate | SPCC3.0 | 1 | |
| 18 | - | Door screen plate | SPCC15 | 2 | |
| 17 | - | Left cover plate | SPCC2.0 | 1 | |
| 16 | - | Right cover | SPCC2.0 | 1 | |
| 15 | YR10011000100 | Triple compound sealant strip D011 | | 1 | L: 1100mm |
| 14 | - | Left door | SPCC2.0 | 1 | |
| 13 | - | Right door | SPCC2.0 | 1 | |
| 12 | - | Front upper cover | SPCC15 | 1 | |
| 11 | YW66641216000 | Large washer A grade GB/T96.16 Longzine | | 8 | |
| 10 | YW65006000100 | Standard spring washer GB/T93.4-Longzine | | 16 | |
| 9 | YW61061601200 | Inner hex. column head screw @/TM1104-24-Longzine | | 24 | |
| 8 | - | Left cover | SPCC2.0 | 1 | |
| 7 | YW06000400000 | Stainless steel hinge 4" | | 4 | |
| 6 | - | Rear lever cover plate | SPCC2.0 | 1 | |
| 5 | - | Rear upper cover plate | SPCC2.0 | 1 | |
| 4 | YW61051000100 | Inner hex countersunk head screw @/TM1104-32-Longzine | | 32 | |
| 3 | - | Power wire clamp plate | SPCC15 | 2 | |
| 2 | - | Right cover plate | SPCC2.0 | 1 | |
| 1 | YW62052500000 | Large cross recessed flat head screw @/TM1104-26-Longzine | | 26 | |

| | | | | | |
|----|---------------|-----------------------------------------------------------|----------|----|--|
| 24 | YW62050500000 | Large cross recessed flat head screw @/TM1104-26-Longzine | | 18 | |
| 23 | YW66061800000 | Large washer A grade GB/T96.16 Longzine | | 32 | |
| 22 | YW00307200000 | Door lock | assembly | 1 | |
| 21 | YW61082000200 | Inner hex. column head screw @/TM1104-24-Longzine | | 10 | |

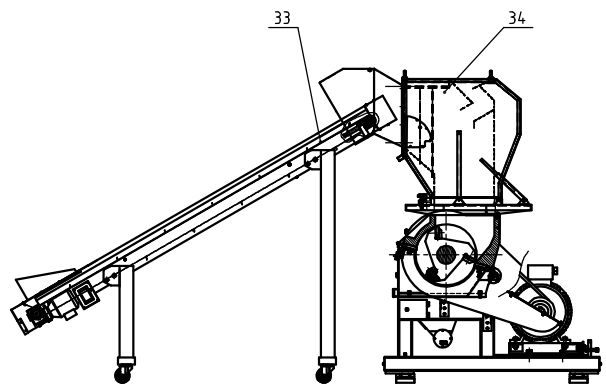
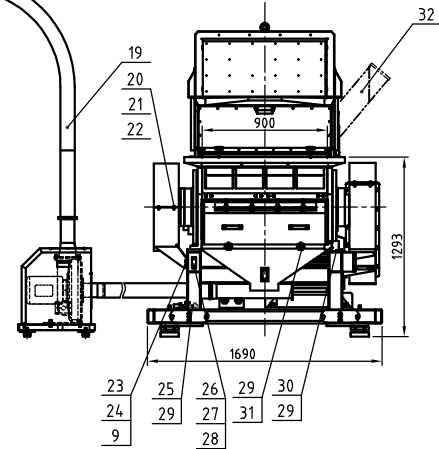
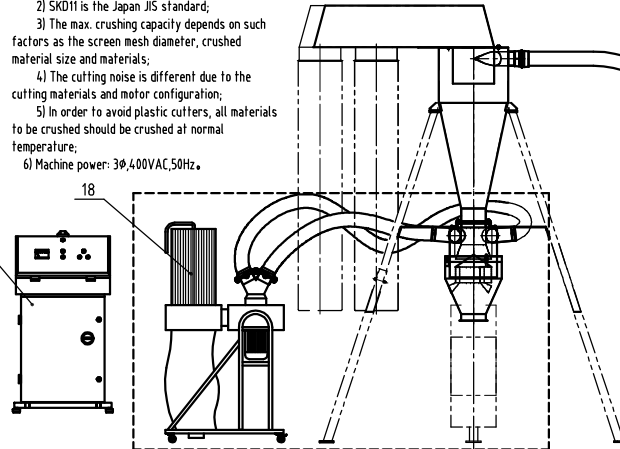
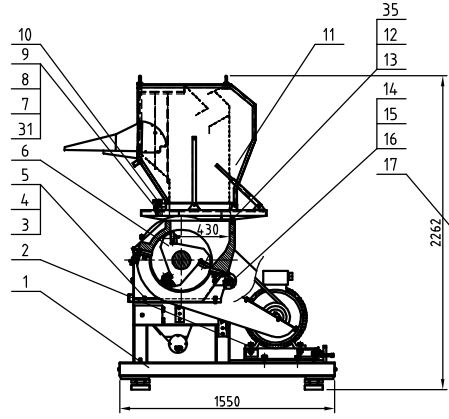
| | | | |
|----|-----|---------|-----|
| 制图 | 版号 | 标题 | 图号 |
| 设计 | 核 | SG-4390 | |
| 校对 | 准 | 护罩部件 | |
| 审核 | 日期 | | |
| 标记 | 更改前 | 更改后 | 更改人 |

SHINI 信易电热机械股份有限公司
Shini Plastics Technologies, Inc.

比例 数量 表面要求 物料号

| | | | | | | | | | |
|---------------------|---------------------|------------------------------|---------------------------|----------------------|-------------------|-----------------|--------------------------|------------------|----------|
| Standard weight(kg) | Noise level (dB(A)) | Max. cutting ability (kg/hr) | Cutting Chamber Size (mm) | Rotating Cutter Qty. | Fixed Cutter Qty. | Cutter Material | Main Shaft Speed (r.p.m) | Motor power (KW) | Ver. No. |
| 2630(2680) | 110~115 | 1000 | 4,30×900 | 3×2(5×2) | 2×2 | SKD11 | 525 | 37(45) | Ver-D |

Notes: 1) Values in brackets are optional;
 2) SKD11 is the Japan JIS standard;
 3) The max. crushing capacity depends on such factors as the screen mesh diameter, crushed material size and materials;
 4) The cutting noise is different due to the cutting materials and motor configuration;
 5) In order to avoid plastic cutters, all materials to be crushed should be crushed at normal temperature;
 6) Machine power: 3φ,400VAC,50Hz.

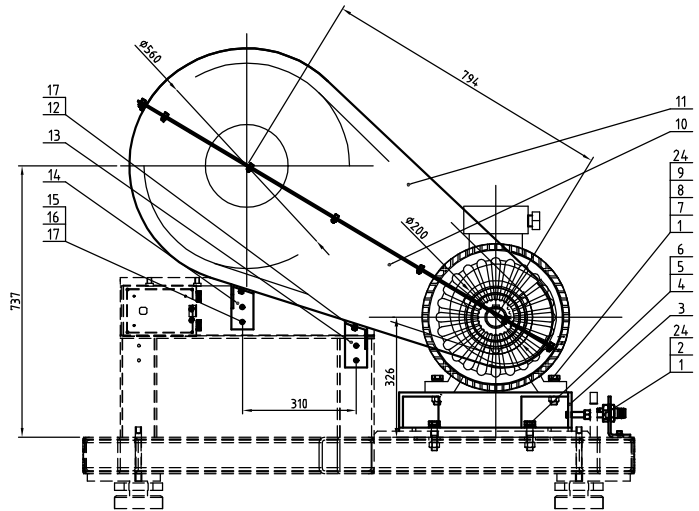
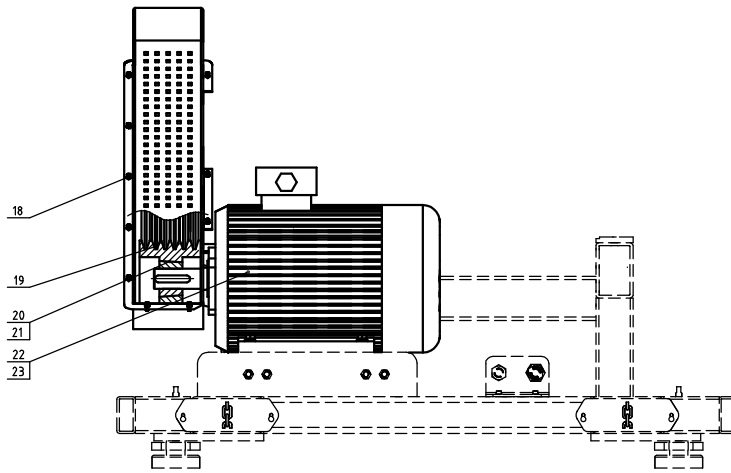


| | | | | | | | | | | |
|----|-----------------|----------------------------------------------|----------|----|------------------------|----|---------------|----------------------------------------------|----------|----|
| 35 | YW66102000100 | Flat washer A grade 10(11x20x2) | | 12 | | 13 | YW65010000000 | Standard spring washer Ø179 B-Large | | 12 |
| 34 | - | with conveyor feed box assembly | Assembly | 1 | option | 12 | YW60102500100 | Hex. bolt Ø1200105-03-Large | | 12 |
| 33 | - | Belt conveyor | Assembly | 1 | option | 11 | - | Feed box assembly | Assembly | 1 |
| 32 | - | Side feed box assembly | Assembly | 1 | option | 10 | BH11300200010 | Feed box star assembly 96-34-M1-02 | Assembly | 2 |
| 31 | YW64.080600000 | Hex nut GB/16710 M8 | | 3 | | 9 | YW66081900000 | Flat washer Ø19x20 L-Longline | | 6 |
| 30 | - | Switch fixed plate | SPH4.0 | 1 | | 8 | YW61082500100 | Inner hex clean head screw Ø1791160-03-Large | | 1 |
| 29 | YR4.00835000000 | Star handle B MB-35 | Assembly | 4 | | 7 | - | Hook | SPH6.0 | 1 |
| 28 | YW61051000200 | Draw recessed pan head screw Ø16710-03-Large | | 4 | | 6 | - | Cutting chamber assembly | Assembly | 1 |
| 27 | JT10014.0000000 | Inner hex. spanner M16 Large | | 1 | | 5 | YW66122400000 | Flat washer A grade Ø19105-03-Large | | 8 |
| 26 | - | Hex. spanner fixed plate | SPCC2.0 | 1 | | 4 | YW65012200000 | Standard spring washer Ø179 B-Large | | 8 |
| 25 | BH104.39001910 | Pre-setting knife jig | Assembly | 1 | | 3 | YW60126000100 | Hex. bolt Ø1200105-03-Large | | 8 |
| 24 | YW65008000100 | Standard spring washer Ø179 B-Large | | 4 | with optional flywheel | 2 | - | Pin-roller | Assembly | 1 |
| 23 | YW61081600000 | Inner hex clean head screw Ø1791160-03-Large | | 4 | with optional flywheel | 1 | - | Roll assembly | Assembly | 1 |
| 22 | YW62061000000 | Large standard M16 nut 30(31)16-03-Large | | 6 | with optional flywheel | | | | | |

| | | | | | |
|----|-----------------|-----------------------------------------------|-------------|---|------------------------|
| 21 | - | flywheel lower cover | SPCC1.5 B-3 | 1 | with optional flywheel |
| 20 | - | flywheel upper cover | SPCC1.5 | 1 | with optional flywheel |
| 19 | - | conveying assembly | Assembly | 1 | option |
| 18 | - | Dust separating system | Assembly | 1 | option |
| 17 | - | Configuration device | Assembly | 1 | |
| 16 | BH10509001210 | Pneumatic spring pin | 4S | 1 | |
| 15 | YW0110014.00000 | Pneumatic spring L:420, length of travel:40mm | Assembly | 1 | |
| 14 | YW30223055000 | Spinon coupling size 22-30x55 | Assembly | 1 | |

| | | | | | |
|----|-----|--------------------|------|-----|----|
| 制图 | 版号 | 标题 | 图号 | 比例 | 数量 |
| 设计 | 核准 | SG-4390B | | 1:1 | 1 |
| 校对 | 核准 | 粉碎机总成 | | 材质 | |
| 审核 | 日期 | SHINI 信易电热机械股份有限公司 | 表面要求 | 物料号 | |
| 标记 | 更改前 | 更改后 | 更改人 | 日期 | |

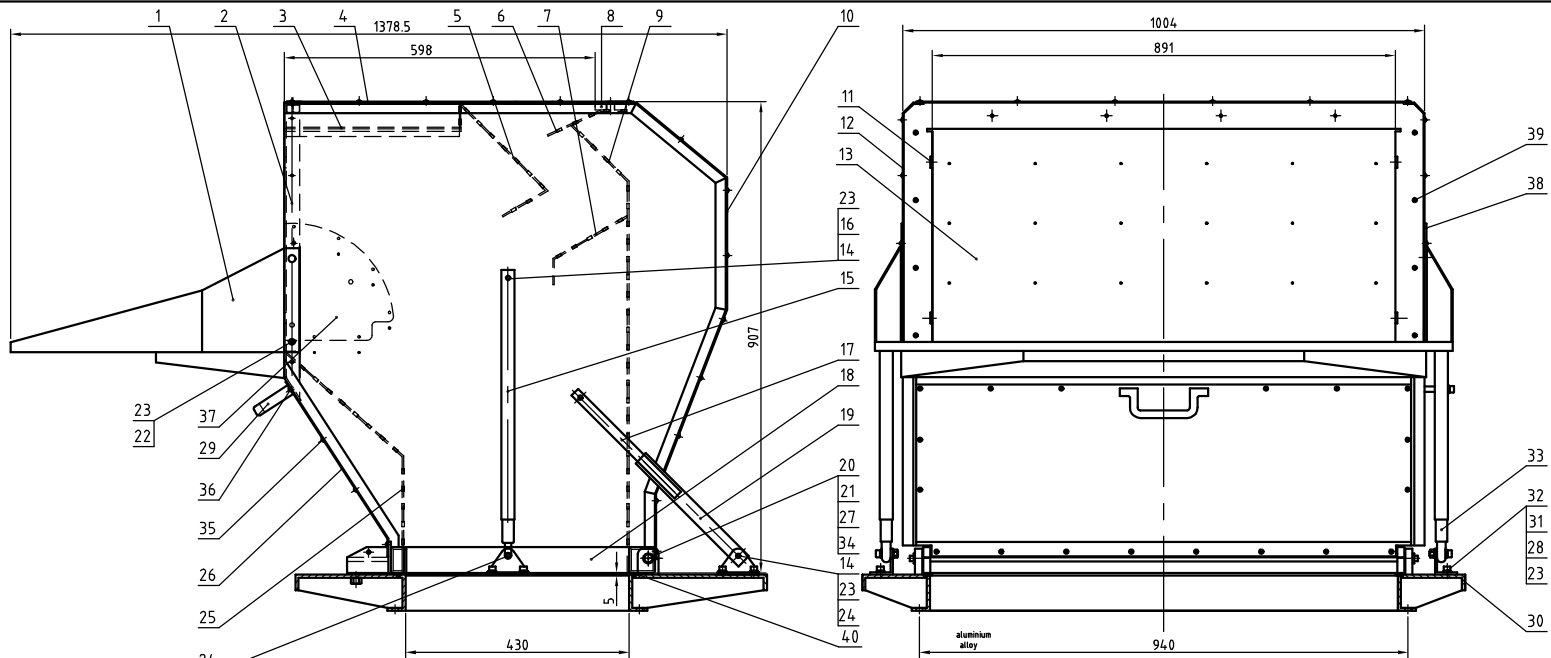




| | | | | |
|----|----------------|---------------------------------------------------------|----------|----|
| 24 | YW66164.000000 | Washer 76x46.5-Longline | | 6 |
| 23 | YM102045004.00 | Motor 1/2HP 3/4" 220V 4P 50Hz E140/180/140V | option | 1 |
| 22 | YM102037004.00 | Motor 1/2HP 3/4" 220V 4P 50Hz E140/180/140V | standard | 1 |
| 21 | YW30353506000 | Super sleeve 355 ball dia: 94MM | | 1 |
| 20 | YW302006000000 | Motor belt pulley sprocket | | 1 |
| 19 | YR002800000000 | V belt (SPC-2800) | | 6 |
| 18 | YW620610000000 | Large cross recessed flat head screw STM Hex10-Longline | | 12 |
| 17 | YW660819000000 | Flat washer 18x19x2.0-Longline | | 8 |
| 16 | YW65008000100 | Standard spring washer GB/T93.4-Longline | | 4 |
| 15 | YW61082000200 | Inner hex column head screw @T10/16.8-25-Longline | | 4 |

| | | | | |
|----|-----------------|---------------------------------------------------|---------|---|
| 14 | - | Ball pulley cover left support | SPH5.0 | 1 |
| 13 | - | Ball pulley cover right support | SPH5.0 | 1 |
| 12 | YW64.000800100 | Non metal insert hex lock nut M6 | | 4 |
| 11 | - | Pulley cover upper part | SPCC1.5 | 1 |
| 10 | - | Pulley cover lower part | SPCC1.5 | 1 |
| 9 | YW611675000000 | Hex. bolt @T08/16.8-25-Longline | | 4 |
| 8 | YW661630000000 | Flat washer A grade @T10/16.8-Longline | | 8 |
| 7 | YW650162000000 | Spring washer 16 | | 4 |
| 6 | YW662037000000 | Flat washer C grade GB/T195.30 | | 4 |
| 5 | YW652052000000 | Standard spring washer GB/T93.4-Longline | | 4 |
| 4 | YW602060000000 | Hex. bolt @T08/16.8-25-Longline | | 4 |
| 3 | - | Motor mount base | SPH10.0 | 1 |
| 2 | YW611610000000 | Inner hex column head screw @T10/16.8-25-Longline | | 4 |
| 1 | YW64.0016000000 | Hex. nut @T16/16-Longline | | 8 |

| 标记 | 更改前 | 更改后 | 更改人 | 日期 | 制图 | 版号 | 标题 | 图号 | 比例 | 数量 | 备注 |
|----|-----|-----|-----|----|----|----|---------------------------------------------------|-----|------|----|----|
| | | | | | 设计 | 核准 | SG-4390B 主传动装置 | | 1:1 | 8 | 材质 |
| | | | | | 校对 | | 信昌电热机械股份有限公司 Shini Plastics Technologies, Inc. | | 表面要求 | | |
| | | | | | 审核 | | | 物料号 | | | |



| | | | | | | | | | |
|----|----------------|----------------------------------------------------|----------------|----|----------------|------------------------------|------------------------------------------------|------------|---|
| 35 | YW67481900000 | Iron non-painted shaft fitting type 6061-T6 | 85 | 17 | BH104.36000210 | Support pipe 1 | Q235A | 1 | |
| 34 | - | Feed box rotating shaft pressing plate | SUS201 3.0 | 2 | 16 | YW64.080600000 | Hex nut GB/T6170 M8-Longline | 6 | |
| 33 | YW01060000000 | Air spring stroke 250, L: 600mm | assembly | 2 | 15 | BH104.36001510 | Gas spring sleeve | Q235A | 2 |
| 32 | - | Gas spring support seat | SPH4 | 3 | 14 | YW61085000000 | Hex hex column head screw GB/T818-8.3-Longline | 4 | |
| 31 | YW65008000100 | Stainless spring washer GB/T93-Longline | 6 | 13 | - | Feeder plate assembly | part 1s | 1 | |
| 30 | - | Cutting chamber neck part | SPH6&SPH14 | 1 | 12 | - | Left and right side parts of water guard | SPCC2&SPH5 | 2 |
| 29 | BW2001200014.0 | Handle | aluminum alloy | 1 | 11 | - | Left and right side plate | SECC3.0 | 2 |
| 28 | YW61081600000 | Hex hex column head screw GB/T818-8.3-Longline | 6 | 10 | - | Outer rear cover plate | SPCC2.0 | 1 | |
| 27 | YW61051000200 | Hex hex column head screw #10 GB/T818-8.3-Longline | 2 | 9 | - | Rear holding plate | SECC3.0 | 1 | |
| 26 | - | Outer front plate | SPCC2.0 | 1 | 8 | - | Butt plate | SPH12.0 | 1 |
| 25 | - | Front folding plate | SECC3.0 | 1 | 7 | - | Rear and middle folding plate | SECC3.0 | 1 |
| 24 | YW64.000800100 | Non metal insert hex lock nut GB/T889.11M8 | 4 | 6 | - | Rear and upper holding plate | SECC3.0 | 1 | |
| 23 | YW66081900000 | Flat washer 6x19x2.0 Longline | 24 | 5 | - | Top and middle holding plate | SECC3.0 | 1 | |
| 22 | YW61083500000 | Hex hex column head screw GB/T818-8.3-Longline | 4 | 4 | - | Top cover plate | SPCC2.0 | 1 | |
| 39 | YW61061601200 | Hex hex column head screw #16x1.3-Longline | 8 | 3 | - | Top folding plate | SECC3.0 | 1 | |
| 38 | - | Feeder part feeder plate hex head | SUS201 | 1 | 2 | - | Support part | SPH4.0 | 1 |
| 37 | - | Feeder part feeder plate hex head | SUS201 | 1 | 1 | - | Feeder part | SPCC2&SPH4 | 1 |
| 36 | YW61082000200 | Hex hex column head screw #16x2.0 | 2 | 18 | - | Square pipe frame | Q235A | 1 | |

| | | | |
|-----|----------------|--------------------------------------------|--------|
| 4.0 | YR900006004.00 | Black rubber sealing strip (Dia: 6mm) | 2.85m |
| 39 | YW61061601200 | Hex hex column head screw #16x1.3-Longline | 8 |
| 38 | - | Feeder part feeder plate hex head | SUS201 |
| 37 | - | Feeder part feeder plate hex head | SUS201 |
| 36 | YW61082000200 | Hex hex column head screw #16x2.0 | 2 |

| 序号 | 代号 | 名称 | 材质 | 数量 | 备注 |
|----|-----|-----|-----|----|---------------|
| | | 制图 | 版号 | | 标题 SG-4390 图号 |
| | | 设计 | 核准 | | 进料箱总成 |
| | | 校对 | | | 比例 1:1 数量 |
| | | 审核 | | | 表面要求 材质 |
| 标记 | 更改前 | 更改后 | 更改人 | 日期 | 审核 |
| | | | | | 日期 |



表面要求
物料号

