
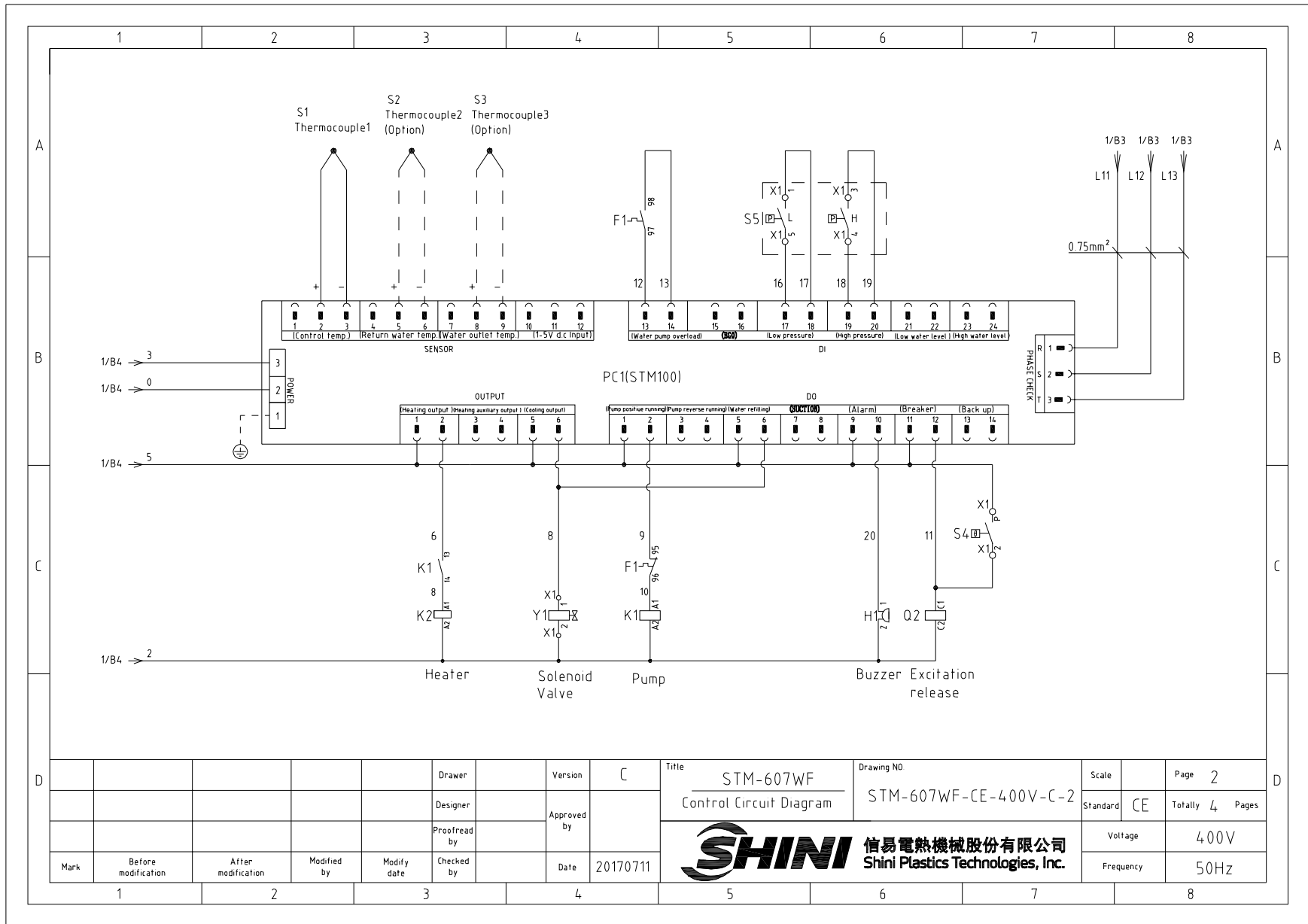



				Drawer	Version	B	Title	STM-607WF	Drawing NO	STM-607WF-CE-400V-B-1	Scale	Page	1	
				Designer	Approved by		Main Circuit Diagram				Standard	CE	Totally	4
				Proofread by	Date	20161129	 信易電熱機械股份有限公司 Shini Plastics Technologies, Inc.				Voltage	400V		
Mark	Before modification	After modification	Modified by	Modify date	Checked by						Frequency	50Hz		

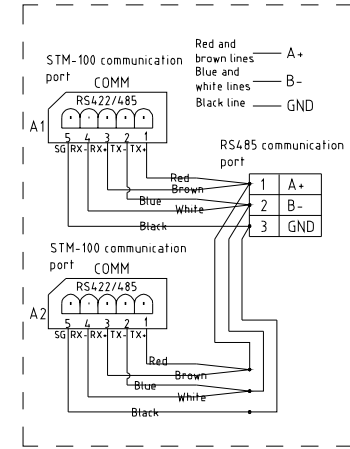
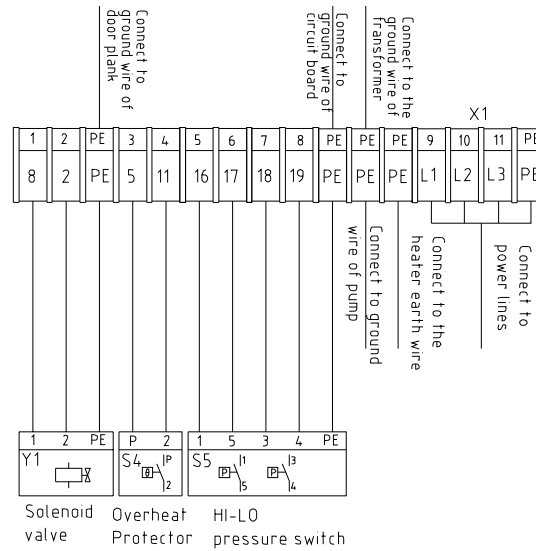
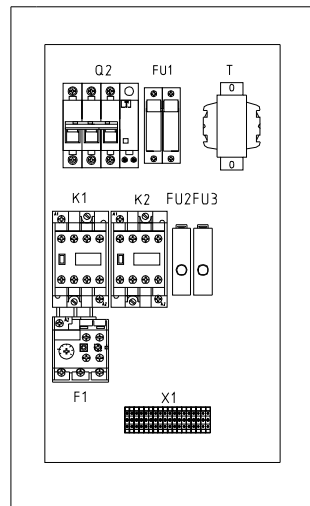
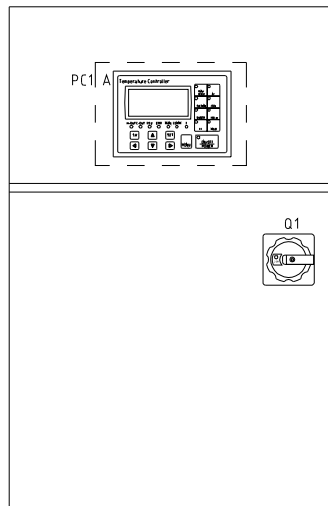


					Drawer	Version	C
					Designer	Approved by	
					Proofread by		
Mark	Before modification	After modification	Modified by	Modify date	Checked by	Date	20170711

Title	STM-607WF Control Circuit Diagram	Drawing NO	STM-607WF-CE-400V-C-2
 信易電熱機械股份有限公司 Shini Plastics Technologies, Inc.		Scale	Page 2
		Standard	CE
		Voltage	400V
		Frequency	50Hz

Technical requirements:

- (1) Directly connect the plus and minus poles of the thermocouple to the input end of thermocouple on the circuit board. No need to connect them to the terminal board.
- (2) Directly connect the pump and heater to the output end of the contactor and thermal overload relay.



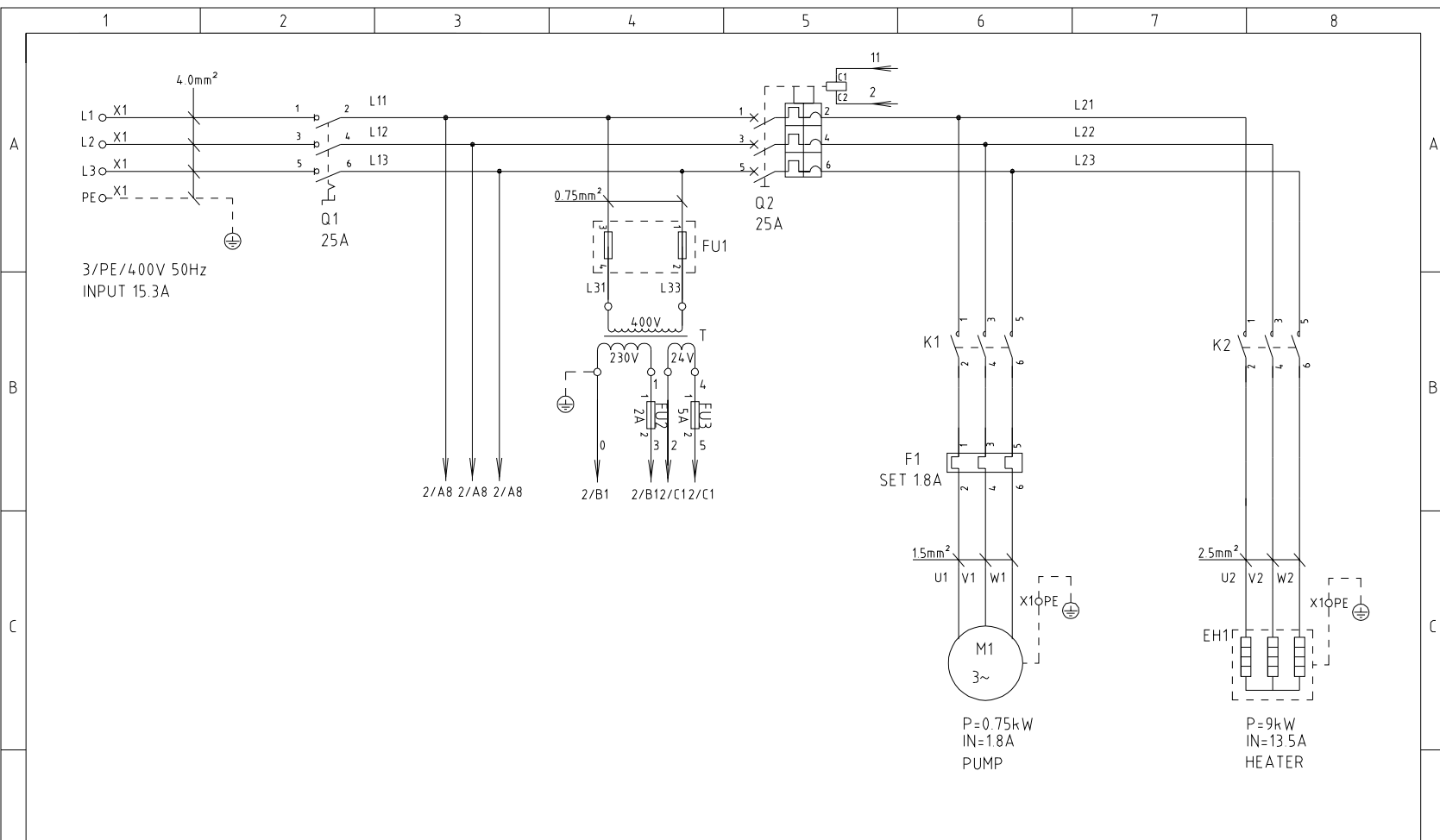
RS485 Communications wiring diagram


Mark	Before modification	After modification	Modified by	Modify date	Checked by	Date	20170711
------	---------------------	--------------------	-------------	-------------	------------	------	----------

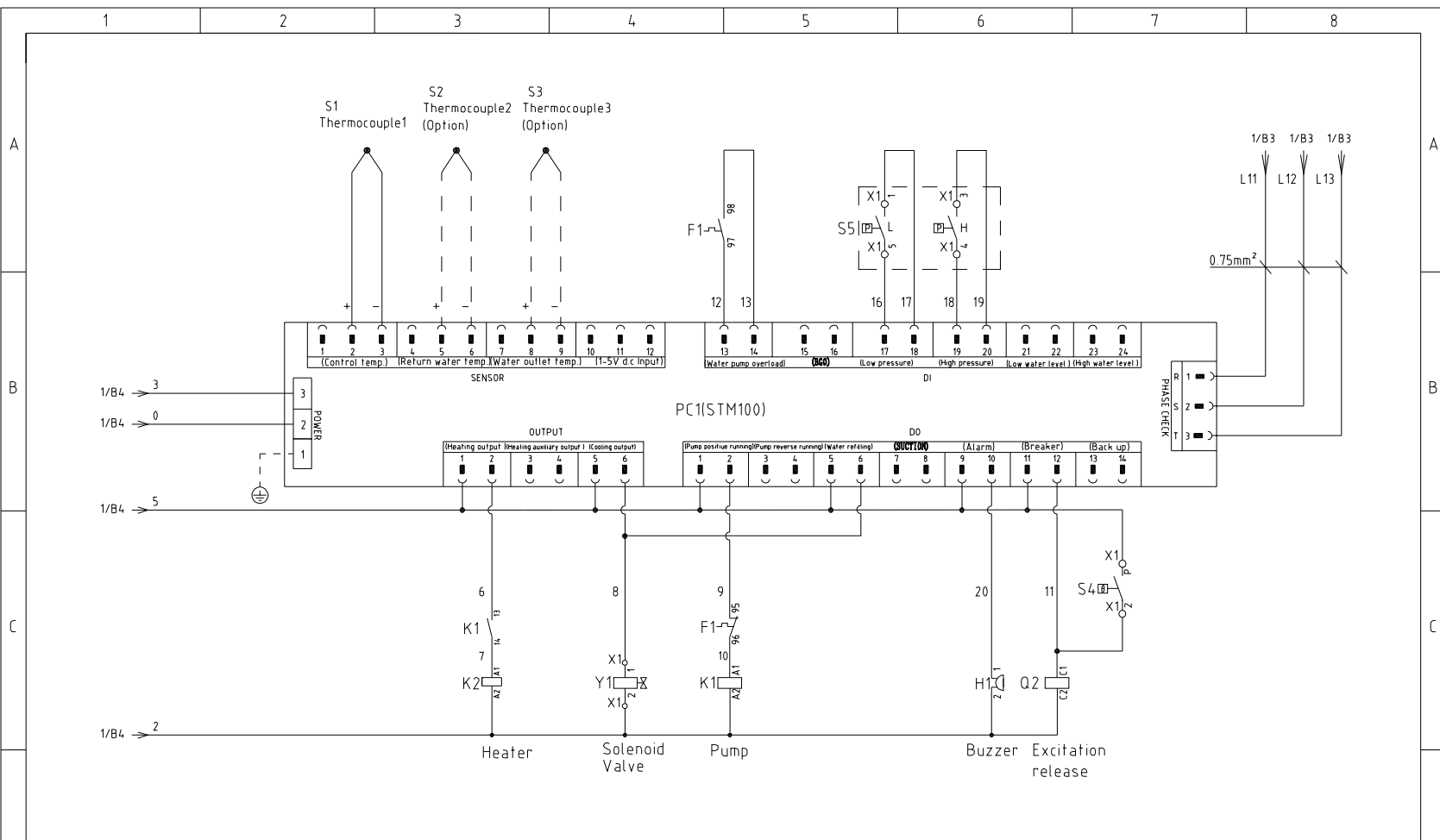
Version	D	Title	STM-607WF Electrical Components Layout	Drawing NO	STM-607WF-CE-400V-D-3
Designer		Approved by		信易電熱機械股份有限公司 Shini Plastics Technologies, Inc.	
Proofread by					


Scale		Page	3
Standard	CE	Totally	4 Pages
Voltage	400V		
Frequency	50Hz		

1		2		3		4		5		6		7		8		
序号/NO	符号/Symbol	名称/Name		制造商/Manufacturer		型号/Type		规格/Specification		数量/Number	物料编号/Material number		备注/Remark			
A	1	Q1	主电源开关/Main Power Switch		MOELLER		TO-2-1/EA/SVB		16A		1	YE10021160000				
	2	Q2	断路器/Circuit Breakers		TECO		BM-63C		16A		1	YE40301603000				
	3		励磁脱扣器/Excitation release		TECO		MX		24VAC		1	YE40024000000				
	4	K1	接触器/Contactors		SIEMENS		3RT6015-1AB01		24VAC		1	YE00601502500				
	5	K2	接触器/Contactors		SIEMENS		3RT6018-1AB01		24VAC		1	YE00601802500				
	6	F1	热过载继电器/Overload Relays		SIEMENS		3RU6116-1AB0		1.1-1.6A		1	YE01160110000				
	7	FU1	熔断器座/Fuse base		CHNT		RT28-32		32A 2P		1	YE41032200000				
B	8		熔芯/Fuse core		MRO		10×38 500V		2A		2	YE46002000100				
	9	FU2 FU3	熔断器/Fuse		YINDA		FS-10		----		2	YE41001000000				
	10		保险管/Fuse		----		6×30		5A		1	YE46630500100				
	11				----		6×30		2A		1	YE46630200000				
	12	T	互感器/Transformer		BAIYUN		IN=400V OUT=24VAC/230V		120VA/350mA		1	YE70040005500				
	13	S1	热电偶/Thermocouple		SHINI		----		K		1	----		(1)		
	14	S2 S3	热电偶/Thermocouple		SHINI		----		K		2	----		(1)(3)		
15	S4	超温保护器/Overheat Protector		----		----		----		1	----		(1)			
C	16	S5	高低压开关/Hi-Lo pressure switch		FENSHEN		P830HLM		H:5-30bar L:-0.7-6bar		1	----		(1)		
	17	PC1 A	线路板/Circuit Board		HANYOUNG NUX		STM100-21(含通讯)		180-430V 50/60Hz		1	YE81184300200				
	18	H1	蜂鸣器/Buzzer		----		PK-35A		24VAC/DC		1	YE84003500600				
	19	Y1	电磁阀/Solenoid Valve		----		----		24VAC		1	----		(1)		
	20	X1	端子排/Terminal Board		----		2.5mm ²		----		11	YE60002503200				
	21				----		2.5mm ² PE		----		5	YE60002503400				
	22	M1	马达/Motor		SHINI		----		400V 50Hz 0.55kW		1	----		(1)		
	23	EH	电热/Heater		SHINI		6kW		400V 50Hz		1	----		(1)		
D	Notes: (1)Means it's not the material inside the control box. (3)Means equipped with function of displaying water outlet and return water temperature.															
					Drawer	Version		C		Title STM-607WF		Drawing NO		Scale	Page 4	
					Designer	Approved by				Electrical Components List 1		STM-607WF-CE-400V-C-4		Standard	CE Totally 4 Pages	
					Proofread by	Date		20170711		 信易電熱機械股份有限公司 Shini Plastics Technologies, Inc.		Voltage		400V		
Mark	Before modification	After modification	Modified by	Modify date	Checked by							Frequency		50Hz		



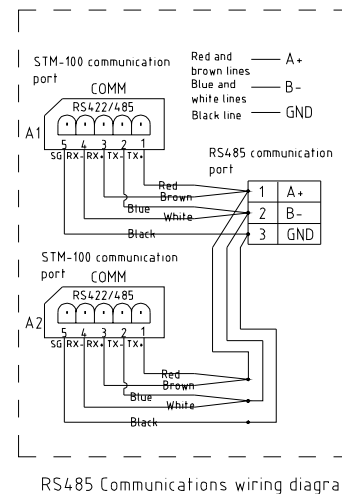
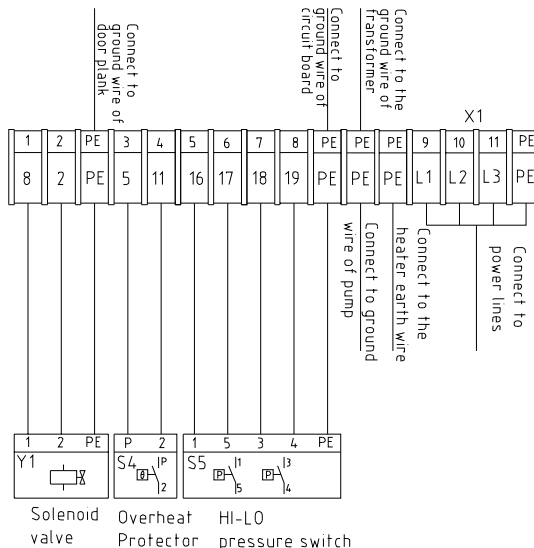
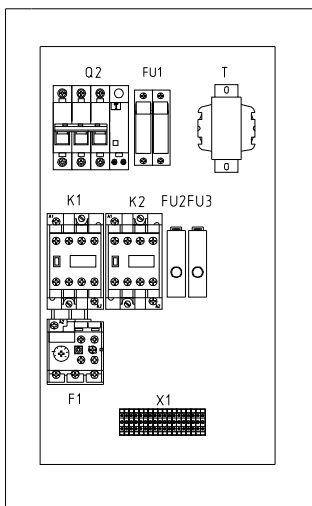
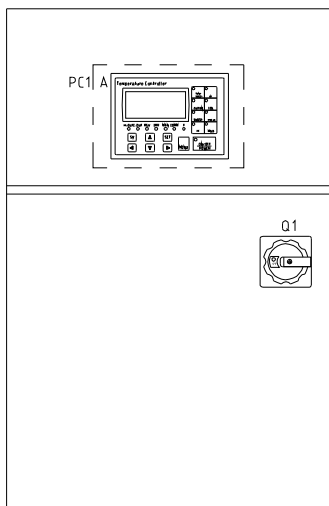
				Drawer	Version	B	Title	STM-910WF Main Circuit Diagram	Drawing NO	STM-910WF-CE-400V-B-1	Scale	Page	1	
				Designer	Approved by						Standard	CE	Totally	4
				Proofread by	Checked by	Date	20161129	 信易電熱機械股份有限公司 Shini Plastics Technologies, Inc.		Voltage	400V			
Mark	Before modification	After modification	Modified by	Modify date	Checked by	Date	20161129	Frequency	50Hz					



				Drawer	Version	C	Title	Drawing NO	Scale	Page	2
				Designer	Approved by		STM-910WF	STM-910WF-CE-400V-C-2	Standard	CE	Totally 4 Pages
				Proofread by	Date	20170711	 信易電熱機械股份有限公司 Shini Plastics Technologies, Inc.		Voltage	400V	
Mark	Before modification	After modification	Modified by	Modify date	Checked by				Frequency	50Hz	

Technical requirements:

- (1) Directly connect the plus and minus poles of the thermocouple to the input end of thermocouple on the circuit board. No need to connect them to the terminal board.
- (2) Directly connect the pump and heater to the output end of the contactor and thermal overload relay.

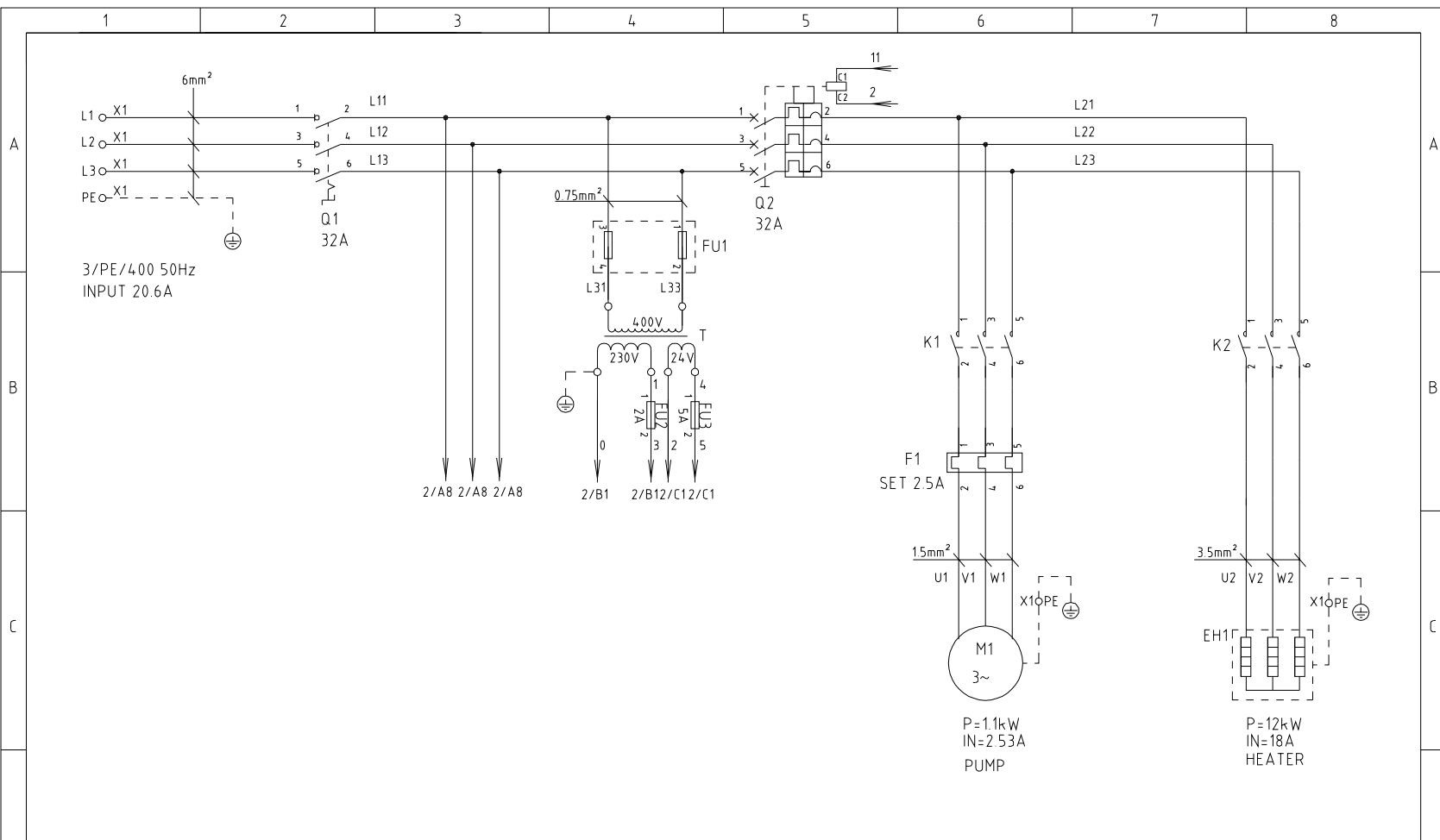


				Drawer	Version	D
				Designer	Approved by	
				Proofread by	Checked by	20170711
Mark	Before modification	After modification	Modified by	Modify date	3	4

Title		Drawing NO		Scale	Page
STM-910WF		STM-910WF-CE-400V-D-3			3
Electrical Components Layout				Standard	Totally
				CE	4 Pages
				Voltage	400V
				Frequency	50Hz

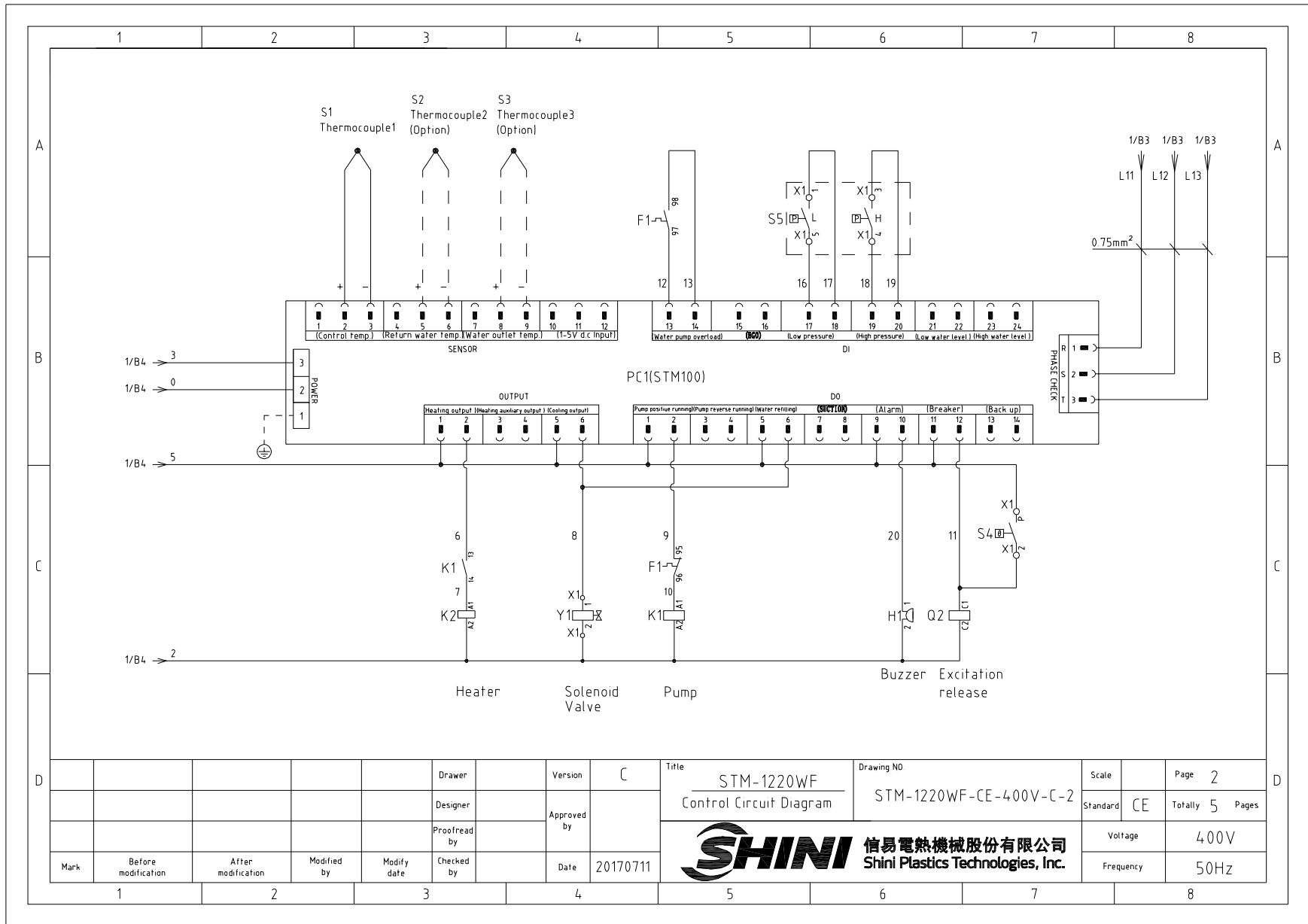


1		2		3		4		5		6		7		8	
序号/NO	符号/Symbol	名称/Name		制造商/Manufacturer		型号/Type		规格/Specification		数量/Number	物料编号/Material number		备注/Remark		
A	1	Q1	主电源开关/Main Power Switch		MOELLER		P1-25/EA/SVB		25A		1	YE10125250000			
	2	Q2	断路器/Circuit Breakers		TECO		BM-63C		25A		1	YE40302503000			
	3		励磁脱扣器/Excitation Release		TECO		MX		24VAC		1	YE40024000000			
	4	K1	接触器/Contactors		SIEMENS		3RT6015-1AB01		24VAC		1	YE00601502500			
	5	K2	接触器/Contactors		SIEMENS		3RT6025-1AC20		24VAC		1	YE00602502600			
	6	F1	热过载继电器/Overload Relays		SIEMENS		3RU6116-1CB0		1.8-2.5A		1	YE01160180000			
	7	FU1	熔断器座/Fuse base		CHNT		RT28-32		32A 2P		1	YE41032200000			
B	8		熔芯/Fuse core		MRO		10×38 500V		2A		2	YE46002000100			
	9	FU2 FU3	熔断器/Fuse		YINDA		FS-10		----		2	YE41001000000			
	10		保险管/Fuse		----		6×30		5A		1	YE46630500100			
	11				----		6×30		2A		1	YE46630200000			
	12	T	互感器/Transformer		BAIYUN		IN=400V OUT=24VAC/230V		120VA/350mA		1	YE70040005500			
C	13	S1	热电偶/Thermocouple		SHINI		----		K		1	----		(1)	
	14	S2 S3	热电偶/Thermocouple		SHINI		----		K		2	----		(1)(3)	
	15	S4	超温保护器/Overheat Protector		----		----		----		1	----		(1)	
	16	S5	高低压开关/Hi-Lo pressure switch		FENSHEN		P830HLM		H:5-30bar L:-0.7-6bar		1	----		(1)	
	17	PC1 A	线路板/Circuit Board		HANYOUNG NUX		STM100-21(含通讯)		180-430V 50/60Hz		1	YE81184300200			
	18	H1	蜂鸣器/Buzzer		----		PK-35A		24VAC/DC		1	YE84003500600			
	19	Y1	电磁阀/Solenoid Valve		----		----		24VAC		1	----		(1)	
	20	X1	端子排/Terminal Board		----		2.5mm ²		----		8	YE60002503200			
	21		接地端子排/Grounding terminal board		----		2.5mm ² PE		----		4	YE60002503400			
D	22		端子排/Terminal Board		----		4.0mm ²		----		3	YE60000403200			
	23		接地端子排/Grounding terminal board		----		4.0mm ² PE		----		1	YE60000403500			
	24	M1	马达/Motor		SHINI		----		400V 50Hz 0.75kW		1	----		(1)	
	25	EH	电热/Heater		SHINI		9kW		400V 50Hz		1	----		(1)	
Notes: (1)Means it's not the material inside the control box. (3)Means equipped with function of displaying water outlet and return water temperature															
				Drawer			Version	C		Title STM-910WF Electrical Components List 1		Drawing NO STM-910WF-CE-400V-C-4		Scale	Page 4
				Designer			Approved by					Standard	CE	Totally 4	Pages
				Proofread by			Date	20170711				Voltage		400V	
				Mark	Before modification	After modification	Modified by	Modify date	Checked by			Frequency		50Hz	
1		2		3		4		5		6		7		8	




				Drawer	Version	B	Title	STM-1220WF Main Circuit Diagram	Drawing NO	STM-1220WF-CE-400V-B-1	Scale	Page	1	
				Designer	Approved by						Standard	CE	Totally	5
				Proofread by	Checked by						Voltage	400V		
Mark	Before modification	After modification	Modified by	Modify date	Date	20161129					Frequency	50Hz		





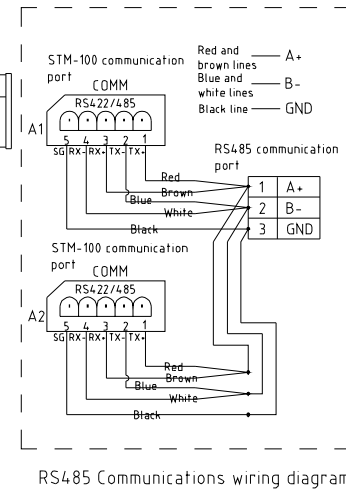
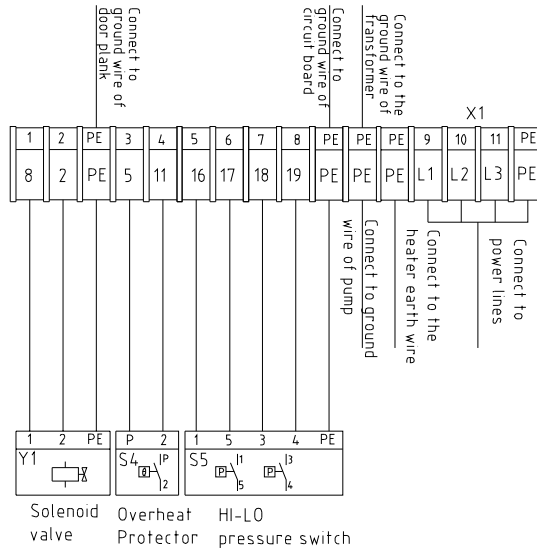
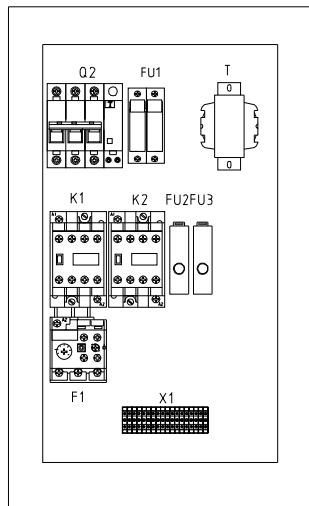
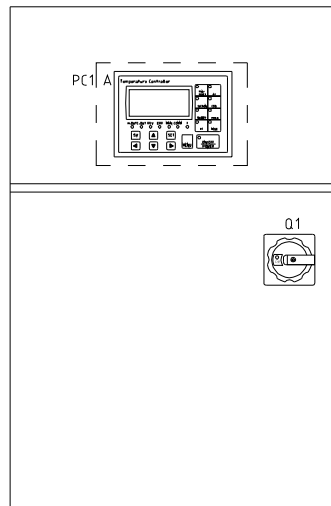
					Drawer	Version	C
					Designer	Approved by	
					Proofread by	Date	20170711
Mark	Before modification	After modification	Modified by	Modify date	Checked by		

Title	STM-1220WF Control Circuit Diagram	Drawing NO	STM-1220WF-CE-400V-C-2
 信易電熱機械股份有限公司 Shini Plastics Technologies, Inc.		Scale	Page 2
		Standard	CE
		Voltage	400V
		Frequency	50Hz

Scale	Page 2
Standard	CE
Voltage	400V
Frequency	50Hz

Technical requirements:

- (1) Directly connect the plus and minus poles of the thermocouple to the input end of thermocouple on the circuit board. No need to connect them to the terminal board.
- (2) Directly connect the pump and heater to the output end of the contactor and thermal overload relay.



				Drawer	Version	D
				Designer	Approved by	
				Proofread by		
Mark	Before modification	After modification	Modified by	Modify date	Checked by	Date
1						20170711

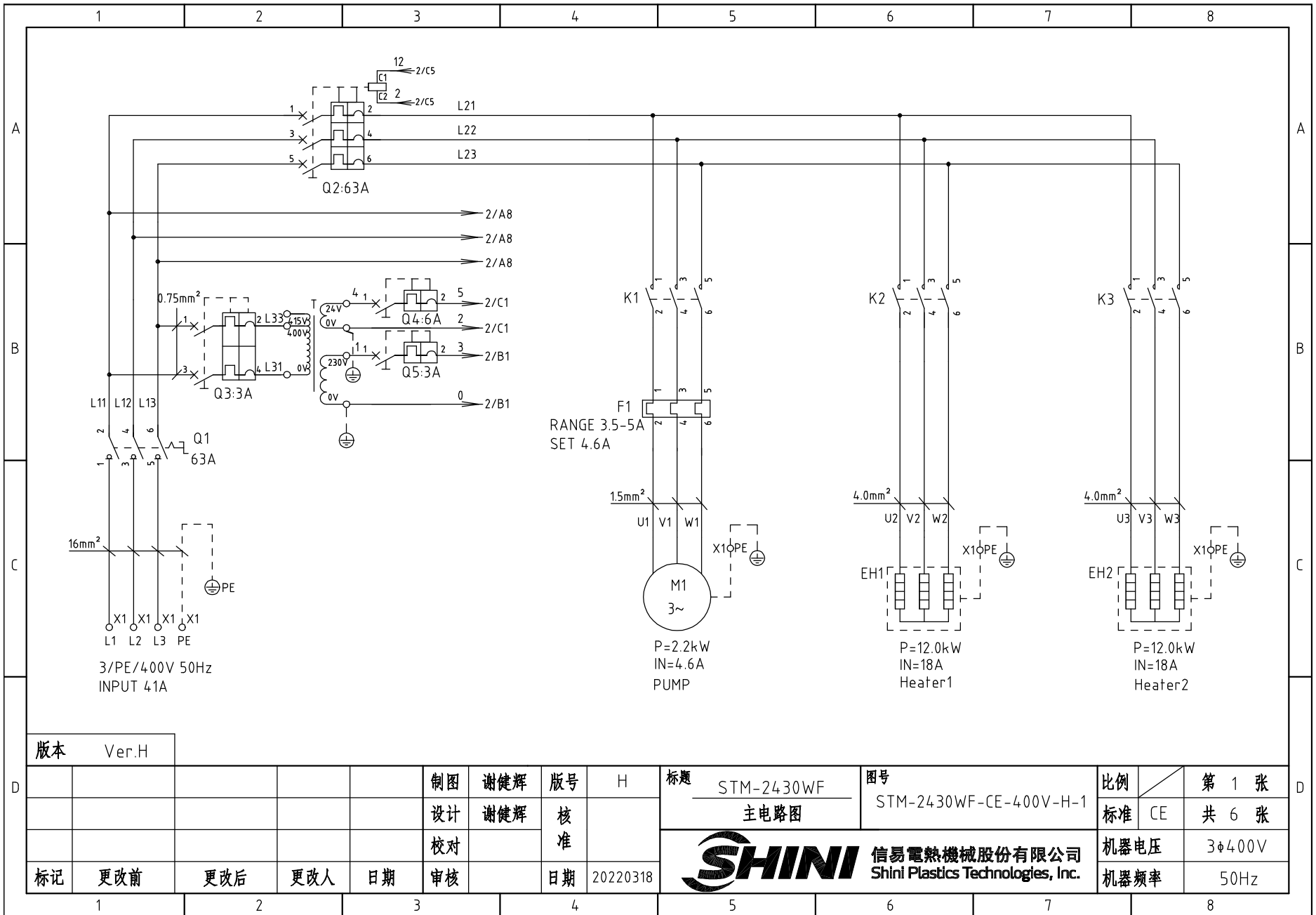
Title: STM-1220WF
Electrical Components Layout

Drawing NO: STM-1220WF-CE-400V-D-3

SHINI 信易電熱機械股份有限公司
Shini Plastics Technologies, Inc.

Scale	Page	3
Standard	CE	Totally 5 Pages
Voltage	400V	
Frequency	50Hz	

1		2		3		4		5		6		7		8	
序号/NO	符号/Symbol	名称/Name		制造商/Manufacturer		型号/Type		规格/Specification		数量/Number	物料编号/Material number		备注/Remark		
A	1	Q1	主电源开关/Main Power Switch		MOELLER		P1-32/EA/SVB		32A		1	YE10323200000			
	2	Q2	断路器/Circuit Breakers		TECO		BM-63C		32A		1	YE40303203000			
	3		励磁脱扣器/Excitation release		TECO		MX		24VAC		1	YE40024000000			
	4	K1	接触器/Contactors		SIEMENS		3RT6015-1AB01		24VAC		1	YE00601502500			
	5	K2	接触器/Contactors		SIEMENS		3RT6026-1AC20		24VAC		1	YE00602602600			
	6	F1	热过载继电器/Overload Relays		SIEMENS		3RU6116-1DB0		2.8-4A		1	YE01160220000			
	7	FU1	熔断器座/Fuse base		CHNT		RT28-32		32A 2P		1	YE41032200000			
B	8		熔芯/Fuse core		MRO		10×38 500V		2A		2	YE46002000100			
	9	FU2 FU3	熔断器/Fuse		YINDA		FS-10		----		2	YE41001000000			
	10		保险管/Fuse		----		6×30		5A		1	YE46630500100			
	11				----		6×30		2A		1	YE46630200000			
	12	T	互感器/Transformer		BAIYUN		IN=400V OUT=24VAC/230V		120VA/ 350MA		1	YE70040005500			
C	13	S1	热电偶/Thermocouple		SHINI		----		----		1	----		(1)	
	14	S2 S3	热电偶/Thermocouple		SHINI		----		----		2	----		(1)(3)	
	15	S4	超温保护器/Overheat Protector		----		----		----		1	----		(1)	
	16	S5	高低压开关/Hi-Lo pressure switch		FENSHEN		P830HLM		H.5-30bar L:-0.7-6bar		1	----		(1)	
	17	PC1 A	线路板/Circuit Board		HANYOUNGUX		STM100-21 (含喇叭)		180-430V 50/60Hz		1	YE81184300200			
	18	H1	蜂鸣器/Buzzer		----		PK-35A		24VAC/DC		1	YE84003500600			
	19	Y1	电磁阀/Solenoid Valve		----		----		24VAC		1	----		(1)	
	20	X1	端子排/Terminal Board		----		2.5mm ²		----		8	YE60002503200			
	21						2.5mm ² PE		----		3	YE60002503400			
	22						4.0mm ² PE		----		1	YE60000403500			
D	23						6mm ²		----		3	YE60000603200			
	24						6mm ² PE		----		1	YE60000603500			
	26	M1	马达/Motor		SHINI		----		400V 50Hz 11kW		1	----		(1)	
	Notes: (1)Means it's not the material inside the control box. (3)Means equipped with function of displaying water outlet and return water temperature.														
				Drawer			Version	C		Title STM-1220WF Electrical Components List 1		Drawing NO STM-1220WF-CE-400V-C-4		Scale	Page 4
				Designer			Approved by			Standard CE		Totally 5	Pages		
				Proofread by			Date	20170711		 信易電熱機械股份有限公司 Shini Plastics Technologies, Inc.		Voltage	400V		
Mark	Before modification	After modification	Modified by	Modify date	Checked by			Date			Frequency	50Hz			

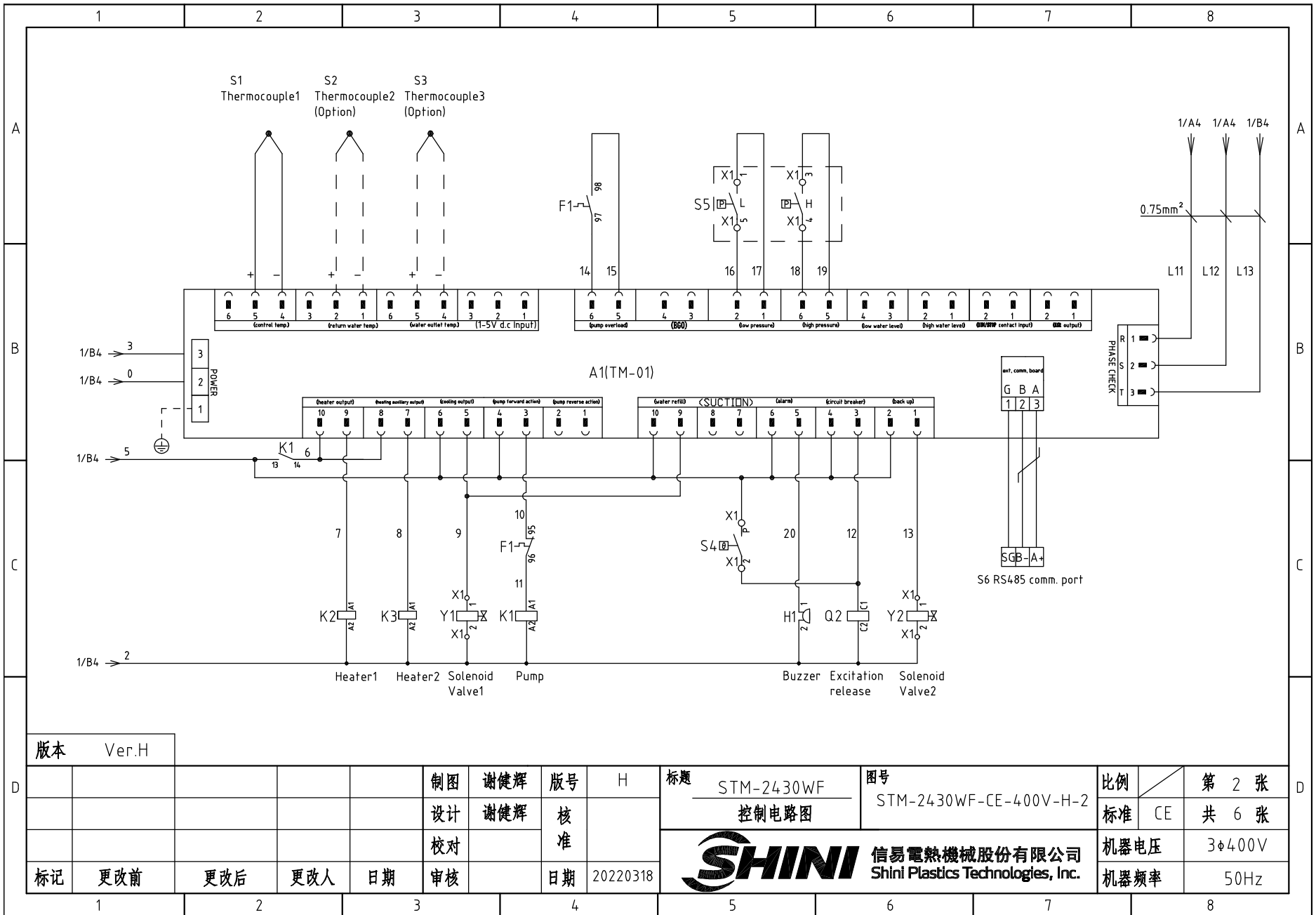


版本 Ver.H

制图	谢健辉	版号	H	标题	STM-2430WF	图号	STM-2430WF-CE-400V-H-1	比例	第 1 张
设计	谢健辉	核准		主电路图				标准	CE
校对		核准						机器电压	3φ400V
标记	更改前	更改后	更改人	日期	审核	日期	20220318	机器频率	50Hz



信易电热机械股份有限公司
Shini Plastics Technologies, Inc.



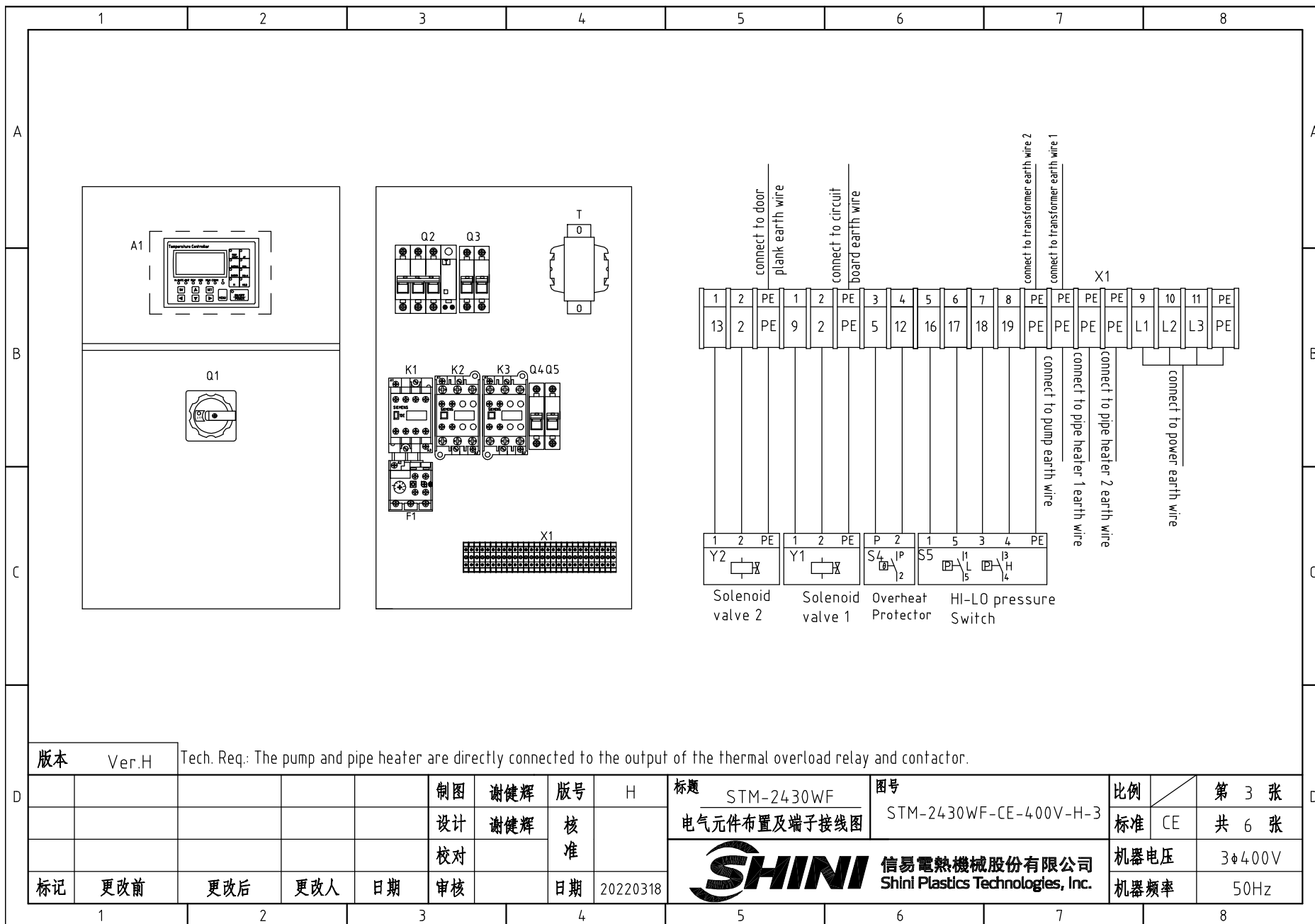
版本 Ver.H

制图	谢健辉	版号	H	标题	STM-2430WF 控制电路图	图号	STM-2430WF-CE-400V-H-2	比例	第 2 张
设计	谢健辉	核准		标准	CE			共 6 张	
校对		日期	20220318	机器电压	3φ400V				
标记	更改前	更改后	更改人	日期	20220318	SHINI 信易電熱機械股份有限公司 Shini Plastics Technologies, Inc.		机器频率	50Hz



信易電熱機械股份有限公司
Shini Plastics Technologies, Inc.

比例	第 2 张
标准	CE
机器电压	3φ400V
机器频率	50Hz



版本 Ver.H		Tech. Req: The pump and pipe heater are directly connected to the output of the thermal overload relay and contactor.							
制图	谢健辉	版号	H	标题	STM-2430WF	图号	STM-2430WF-CE-400V-H-3	比例	第 3 张
设计	谢健辉	核准		电气元件布置及端子接线图				标准	CE 共 6 张
校对		核准		信易電熱機械股份有限公司 Shini Plastics Technologies, Inc.		机器电压	3φ400V		
标记	更改前	更改后	更改人			日期	20220318	机器频率	50Hz

A

A

B

B

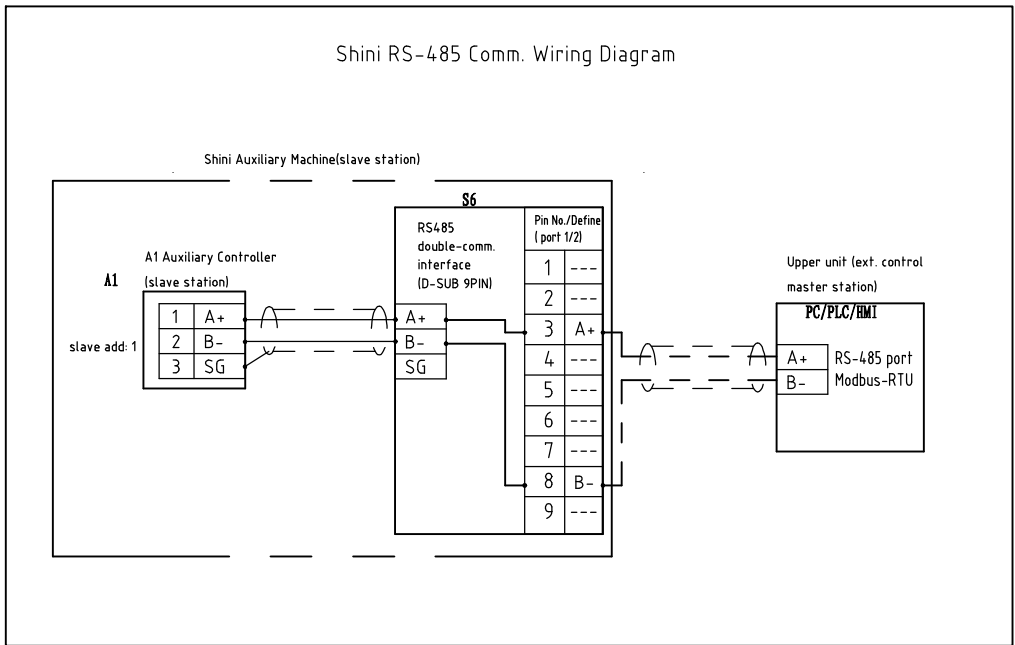
C

C

D

D

Shini RS-485 Comm. Wiring Diagram



Shini RS-485 Port Define

D-sub-9 pin interface	Pin No.	Pin Define
	1	-
	2	-
	3	A+ (RS-485 signal)
	4	-
	5	-
	6	-
	7	-
	8	B- (RS-485 signal)
	9	-

Note: 1. Comm. port: RS-485(two wire type)
 2. Comm. protocol: Modbus-RTU
 3. The machine is equipped with d-sub9 female connector. Port 1 and port 2 are connected in parallel, with the same functions, regardless of primary and secondary;

版本 Ver.H

制图	谢健辉	版号	H
设计	谢健辉	核准	
校对		核准	
标记	更改前	更改后	更改人
	日期	审核	日期
			20220318

标题 STM-2430WF
 通讯接线图

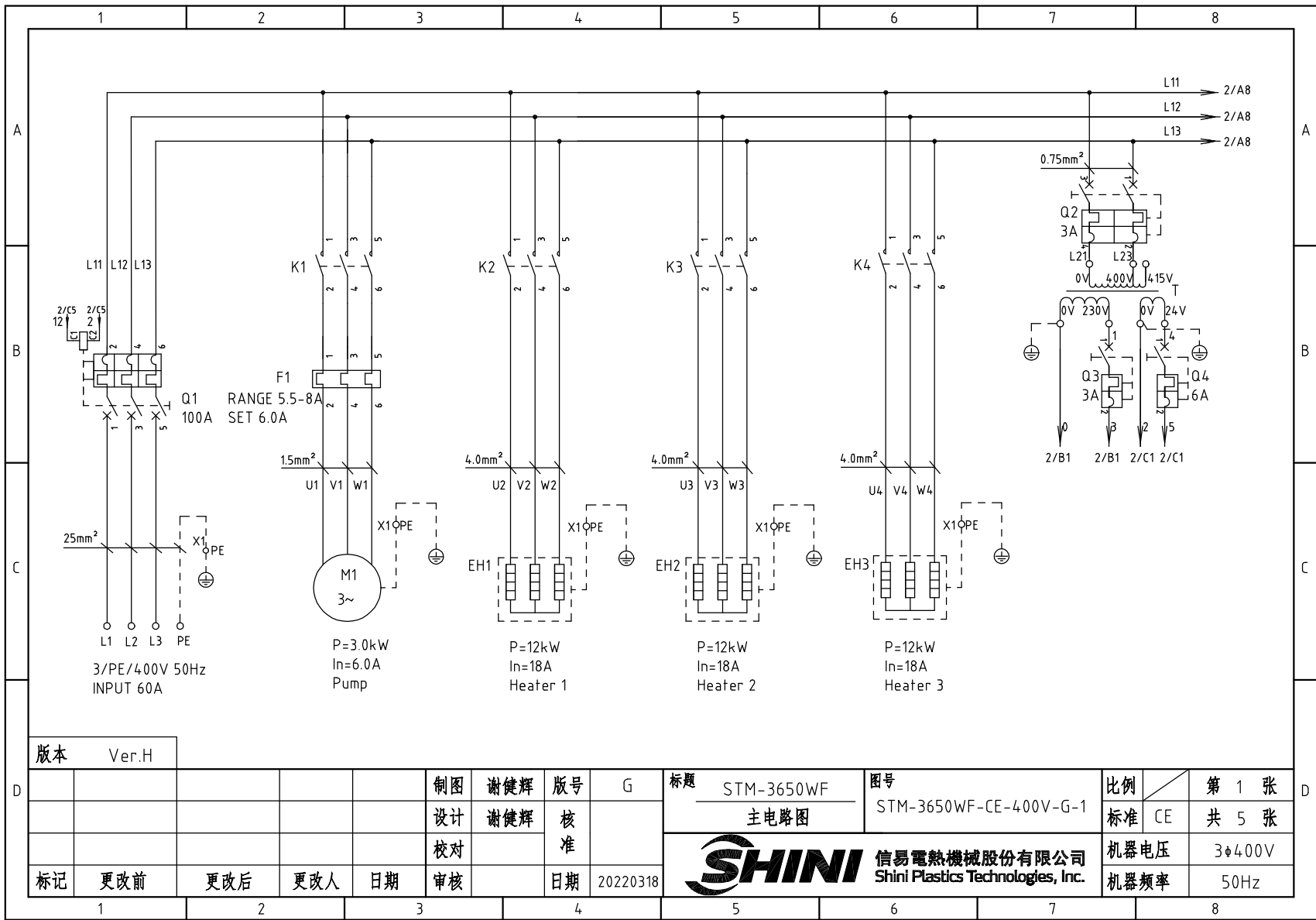
图号 STM-2430WF-CE-400V-H-4



信易電熱機械股份有限公司
 Shini Plastics Technologies, Inc.

比例	第 4 张
标准 CE	共 6 张
机器电压	3φ400V
机器频率	50Hz

1		2		3		4		5		6		7		8											
NO.	Symbol	Name		Manufacturer		Type		Specification		Number	Material number		Remark												
A	1	Q1	Main power switch		EATON		P3-63/EA/SVB		63A		1	YE10636300000													
	2	Q2	Circuit breaker		TECO		BM-63C		63A		1	YE40306303000													
	3		Release		TECO		MX		24VAC		1	YE40024000000													
	4	Q3	Circuit breaker		TECO		BM-63C/2003S 2P		3A		1	YE40200203000													
	5	Q4	Circuit breaker		TECO		BM-63C/1006S 1P		6A		1	YE40100600100													
	6	Q5	Circuit breaker		TECO		BM-63C/1003S 1P		3A		1	YE40100203000													
	7	K1	Contactors		SIEMENS		3RT6015-1AB01		24VAC		1	YE00601502500													
B	8	K2 K3	Contactors		SIEMENS		3RT6026-1AC20		24VAC		2	YE00602602600													
	9	F1	Overload relays		SIEMENS		3RU6116-1FB0		3.5-5A		1	YE01160350000													
	10	T	Transformer		JIUXIN		IN=400/415V OUT=24V/230V		120VA/350mA		1	YE70040007300													
	11	S1	Thermocouple		SHINI		----		----		1	----		(1)											
	12	S2 S3	Thermocouple		SHINI		----		----		2	----		(1)(2)											
	13	S4	Overheat protector		TONCEAO		ZA300		250V 5(4)A		1	----		(1)											
	14	S5	HI-LO pressure switch		FENSHEN		P830HLM		H:5-30bar L:-0.7-6bar		1	----		(1)											
C	15	S6	Connect to interface board RS-485(Dsub-9pin connector)		YUYUN		----		----		1	YE90048501200													
	16		Shell RS485(SAL-700G-A-19)0		BINCHENG		----		----		1	YR40048500000													
	17	A1	Circuit board		YUYUN		TM-01-220VAC(with comm.)		180~430V 50/60Hz		1	YE81012200300													
	18	H1	Buzzer		JINKANG		PK-35A		24VAC/DC		1	YE84003500600													
	19	Y1 Y2	Solenoid valve		----		----		24VAC		2	----		(1)											
	20	X1	Terminal board		HONEYWELL		SK2.5		----		8	YE60002503200													
	21		Earth terminal board		HONEYWELL		GK2.5PE		----		4	YE60002503400													
	22		Earth terminal board		HONEYWELL		GK5PE		----		2	YE60000403500													
	23		Terminal board		HONEYWELL		GK16		----		3	YE60001603200													
D	24		Earth terminal board		HONEYWELL		GK16PE		----		1	YE60001603500													
	25		Terminal fittings E/GK series(Honeyware)		HONEYWELL		----		----		6	YE60000003900													
	版本		Ver.H		Notes: (1)Non materials in the control box;(2)Optional water outlet and return water display function;																				
					制图		谢健辉		版号		H		标题		STM-2430WF		图号		STM-2430WF-CE-400V-H-5		比例		第 5 张		
					设计		谢健辉		核准						电气元件明细表一				标准		CE		共 6 张		
				校对																					
标记		更改前		更改后		更改人		日期		审核		日期		20220318		 信易電熱機械股份有限公司 Shini Plastics Technologies, Inc.		机器电压		3φ400V		机器频率		50Hz	
1		2		3		4		5		6		7		8											

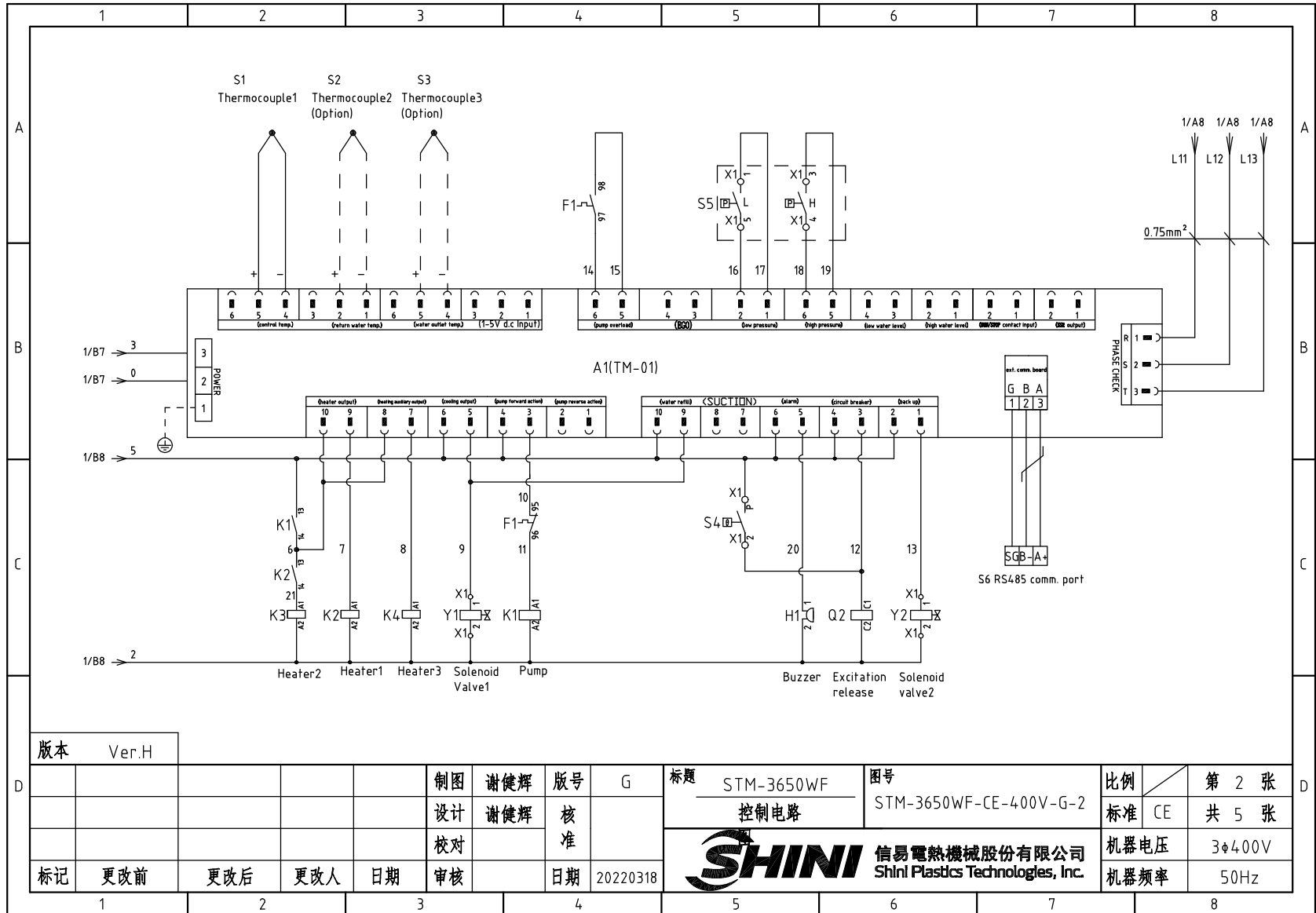


版本 Ver.H

制图	谢健辉	版号	G
设计	谢健辉	核准	
校对		核准	
标记	更改前	更改后	更改人
		日期	日期
		20220318	

标题	STM-3650WF	图号	STM-3650WF-CE-400V-G-1
主电路图			
SHINI		信易電熱機械股份有限公司 Shini Plastics Technologies, Inc.	

比例	第 1 张
标准	CE
共 5 张	
机器电压	3φ400V
机器频率	50Hz



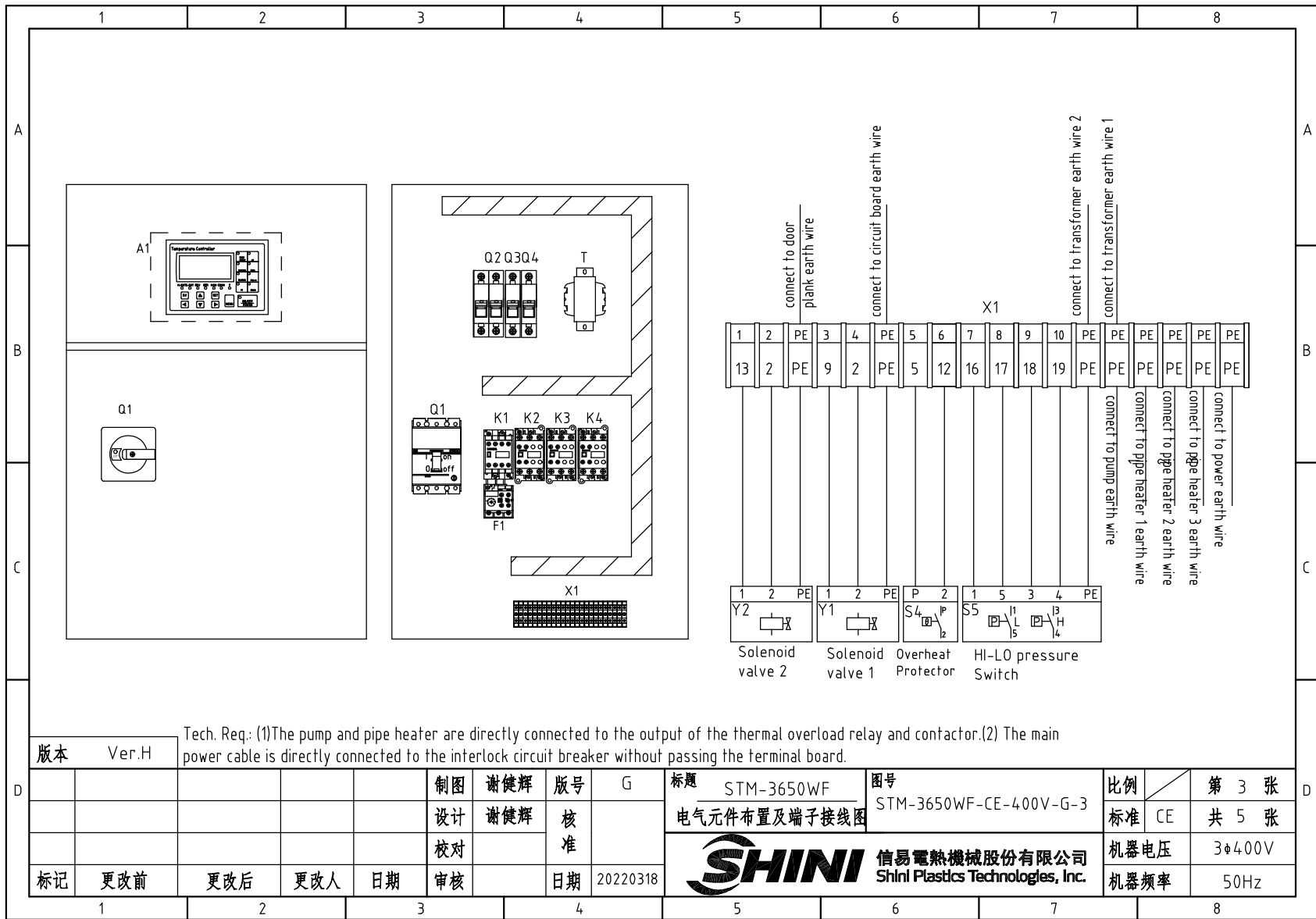
版本 Ver.H

制图	谢健辉	版号	G
设计	谢健辉	核准	
校对		日期	20220318
标记	更改前	更改后	更改人
		日期	

标题 STM-3650WF 控制电路
图号 STM-3650WF-CE-400V-G-2

比例	第 2 张
标准	共 5 张
机器电压	3φ400V
机器频率	50Hz

SHINI 信易電熱機械股份有限公司
Shini Plastics Technologies, Inc.



Tech. Req.: (1)The pump and pipe heater are directly connected to the output of the thermal overload relay and contactor.(2) The main power cable is directly connected to the interlock circuit breaker without passing the terminal board.

版本	Ver.H										
		制图	谢健辉	版号	G	标题	STM-3650WF	图号	STM-3650WF-CE-400V-G-3	比例	第 3 张
		设计	谢健辉	核准		电气元件布置及端子接线图				标准	CE
		校对								机器电压	3φ400V
标记	更改前	更改后	更改人	日期	审核	日期	20220318	信易電熱機械股份有限公司 Shini Plastics Technologies, Inc.		机器频率	50Hz

1 2 3 4 5 6 7 8

A

A

B

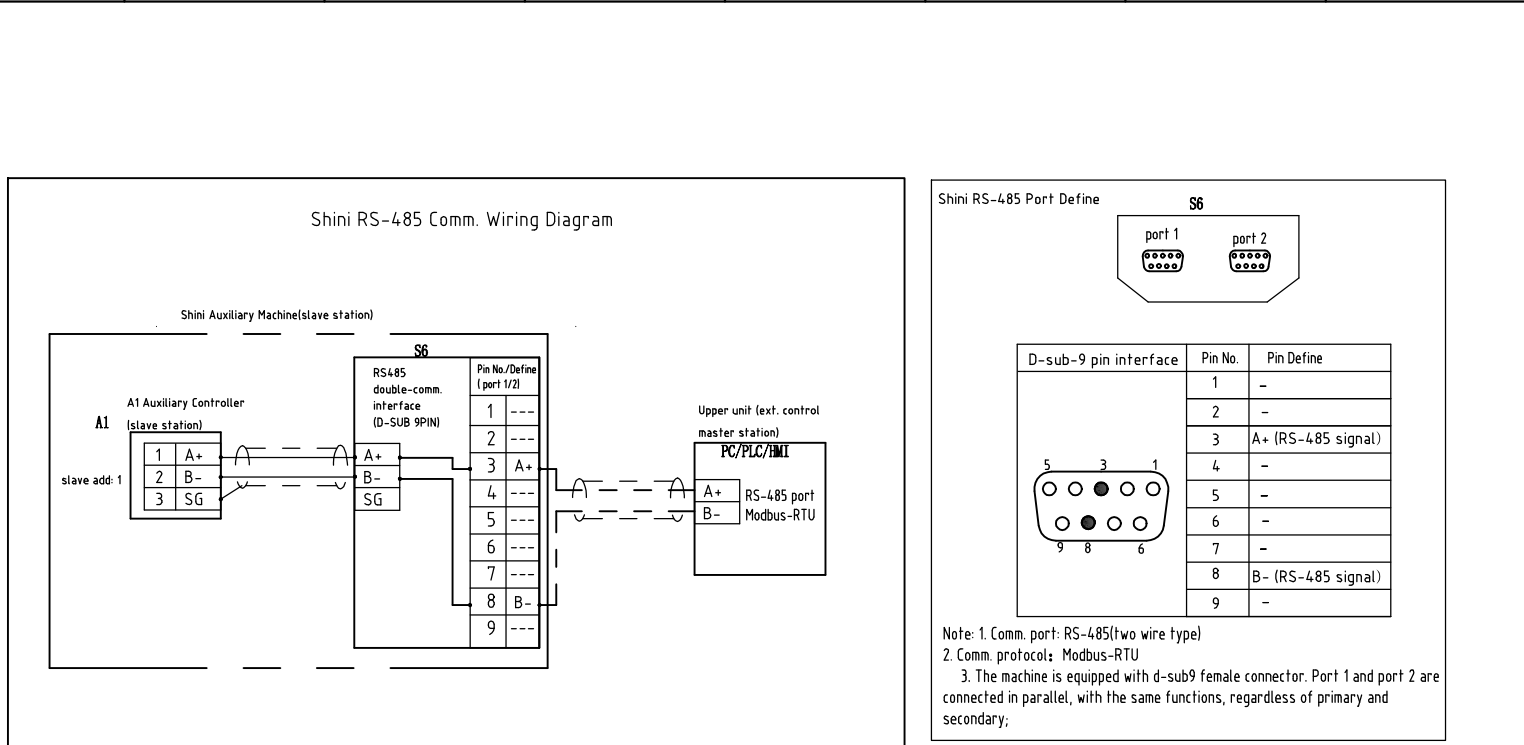
B

C

C

D

D



版本 Ver.H

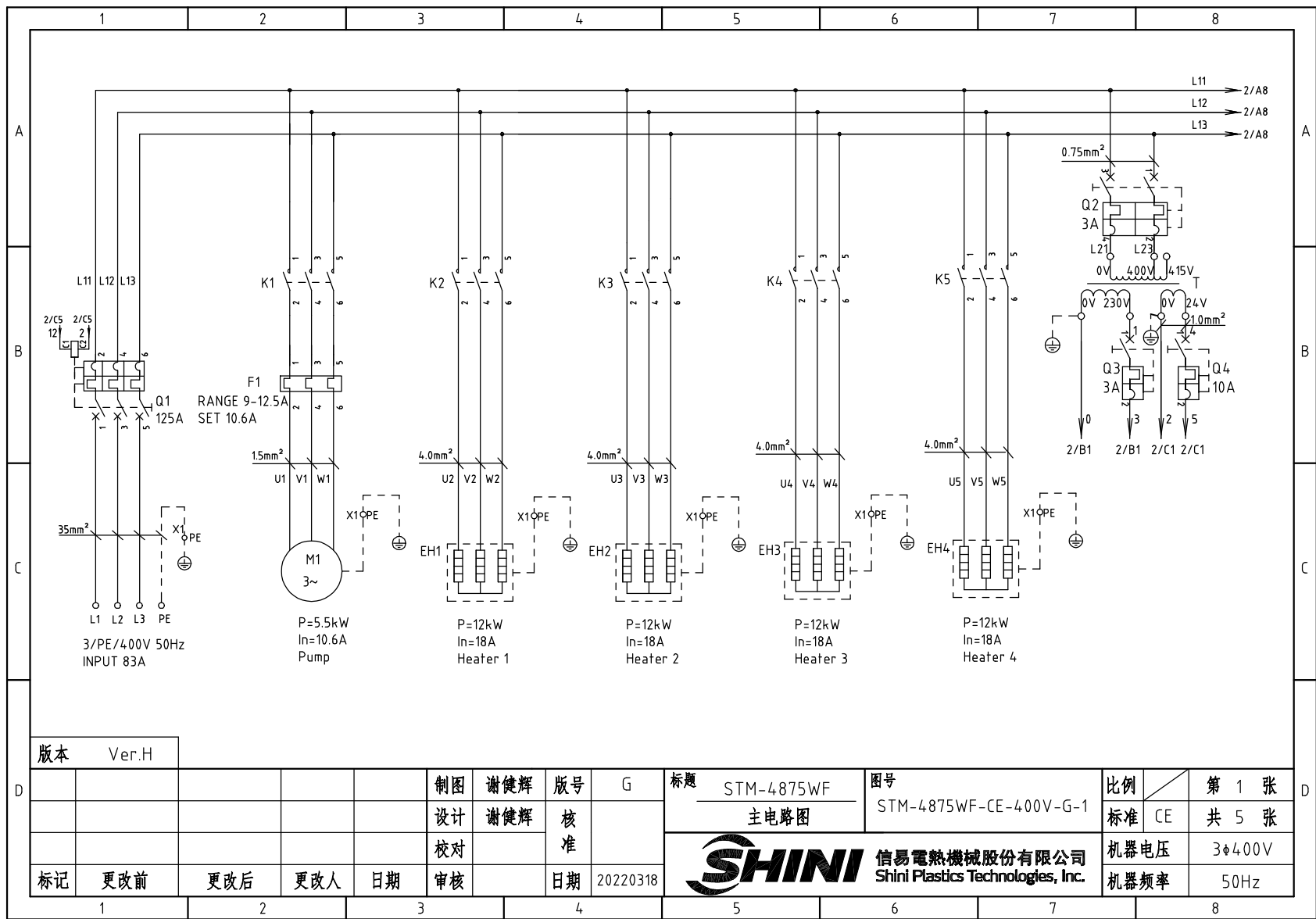
					制图 谢健辉	版本号 G	
					设计 谢健辉	核准	
					校对	日期 20220318	
标记	更改前	更改后	更改人	日期	审核	日期	

标题 STM-3650WF 通讯接线图	图号 STM-3650WF-CE-400V-G-4
信易电热机械股份有限公司 Shini Plastics Technologies, Inc.	

比例		第 4 张
标准	CE	共 5 张
机器电压	3φ400V	
机器频率	50Hz	

1 2 3 4 5 6 7 8

1		2		3		4		5		6		7		8		
NO.	Symbol	Name		Manufacturer		Type		Specification		Number	Material number		Remark			
A	1	Q1	Interlock circuit breaker		ABB		A1A125TMF100/10003PFF		100A		1	YE41110200000				
	2		Release		ABB		SOR-C		24V-30V AC/DC		1	YE40243000900				
	3	Q2	Circuit breaker		TECO		BM-63C/2003S 2P		3A		1	YE40200203000				
	4	Q3	Circuit breaker		TECO		BM-63C/1003S 1P		3A		1	YE40100203000				
	5	Q4	Circuit breaker		TECO		BM-63C/1006S 1P		6A		1	YE40100600100				
	6	K1	Contactors		SIEMENS		3RT6016-1AB01		24VAC		1	YE00601602500				
	7	K2 K3 K4	Contactors		SIEMENS		3RT6026-1AC20		24VAC		3	YE00602602600				
B	8	F1	Thermal overload relays		SIEMENS		3RU6116-1HB0		5.5-8A		1	YE01160550000				
	9	T	Transformer		JIUXIN		IN=400/415V OUT=24V/230V		120VA/350mA		1	YE70040007300				
	10	S1	Thermocouple		SHINI		----		----		1	----		(1)		
	11	S2 S3	Thermocouple		SHINI		----		----		2	----		(1)(2)		
	12	S4	Overheat protector		TONCEAO		ZA300		250V 5(4)A		1	----		(1)		
	13	S5	HI-LO pressure switch		FENSHEN		P830HLM		H:5-30bar L:-0.7-6bar		1	----		(1)		
	14	S6	Connect to interface board RS-485(Dsub-9pin connector)		YUYUN		----		----		1	YE90048501200				
15		Shell RS485(SAL-700G-A-19)0		BINCHENG		----		----		1	YR40048500000					
C	16	A1	Circuit board		YUYUN		TM-01-220VAC(with comm.)		180~430V 50/60Hz		1	YE81012200300				
	17	H1	Buzzer		----		PK-35A		24VAC/DC		1	YE84003500600				
	18	Y1 Y2	Solenoid valve		----		----		24VAC 50/60Hz		2	----		(1)		
	19	X1	Terminal board		HONEYWELL		SK2.5		----		10	YE60002503200				
	20		Earth terminal board		HONEYWELL		GK2.5PE		----		4	YE60002503400				
	21		Earth terminal board		HONEYWELL		GK5PE		----		3	YE60000403500				
	22		Earth terminal board		HONEYWELL		GK35PE		----		1	YE60003503500				
23		Terminal fittings E/GK series(Honeyware)		HONEYWELL		E/GK		PCS		6	YE60000003900					
D	24	M1	Motor		NYP		3.0kW		400V 50Hz		1	----		(1)		
	25	EH1 EH2 EH3	HEATER		SHINI		12kW		400V 50Hz		3	----		(1)		
	版本 Ver.H		Notes: (1)Non materials in the control box;(2)Optional water outlet and return water display function;													
					制图 谢健辉		版号 G		标题 STM-3650WF		图号 STM-3650WF-CE-400V-G-5		比例		第 5 张	
					设计 谢健辉		核 准		电气元件明细表一		标准 CE		共 5 张			
				校对		核 准		 信易電熱機械股份有限公司 Shini Plastics Technologies, Inc.		机器电压		3φ400V				
标记 更改前		更改后		更改人		日期 20220318				机器频率		50Hz				
1		2		3		4		5		6		7		8		



版本 Ver.H

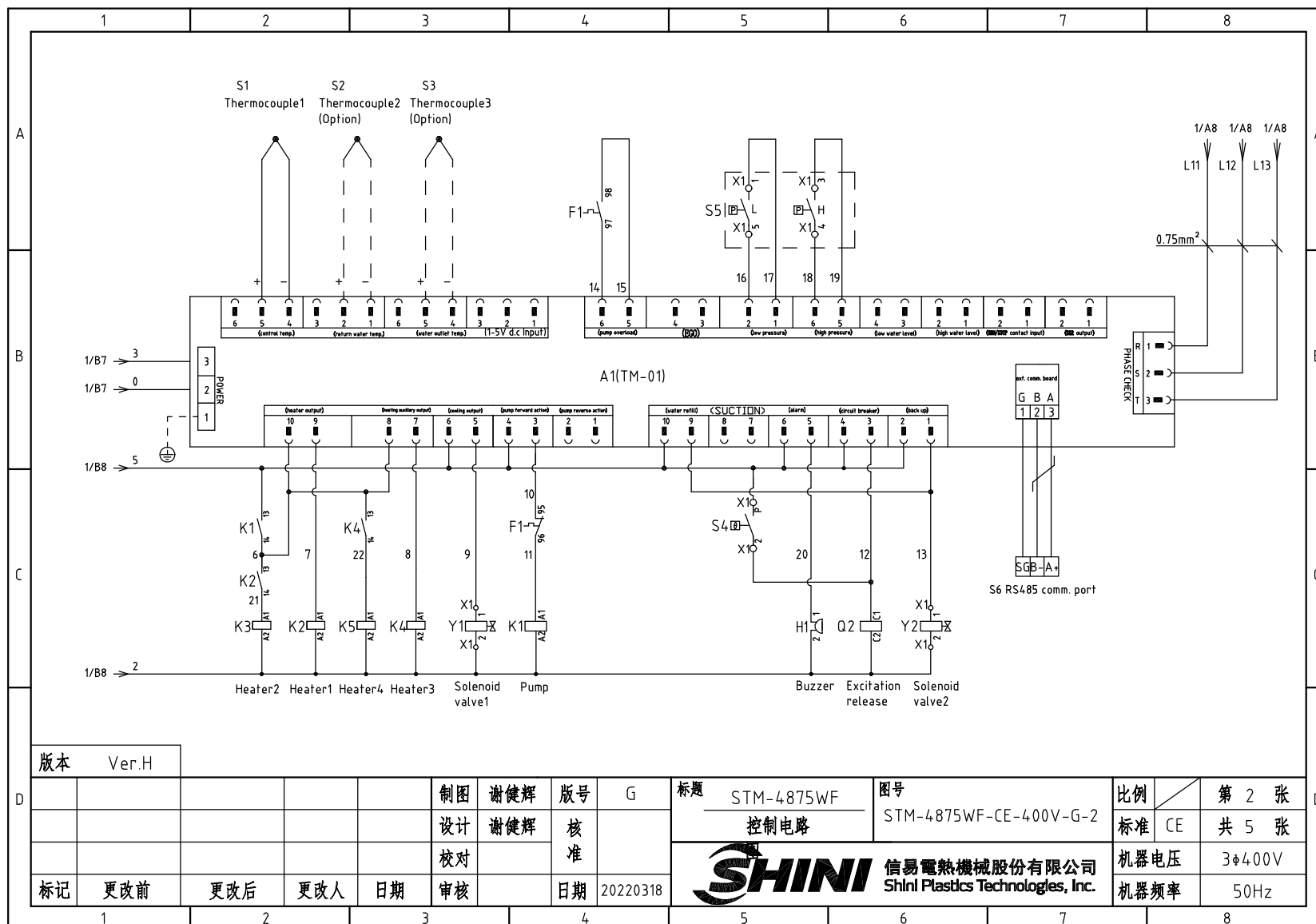
制图	谢健辉	版号	G
设计	谢健辉	核	
校对		准	
标记	更改前	更改后	更改人
	日期	日期	20220318

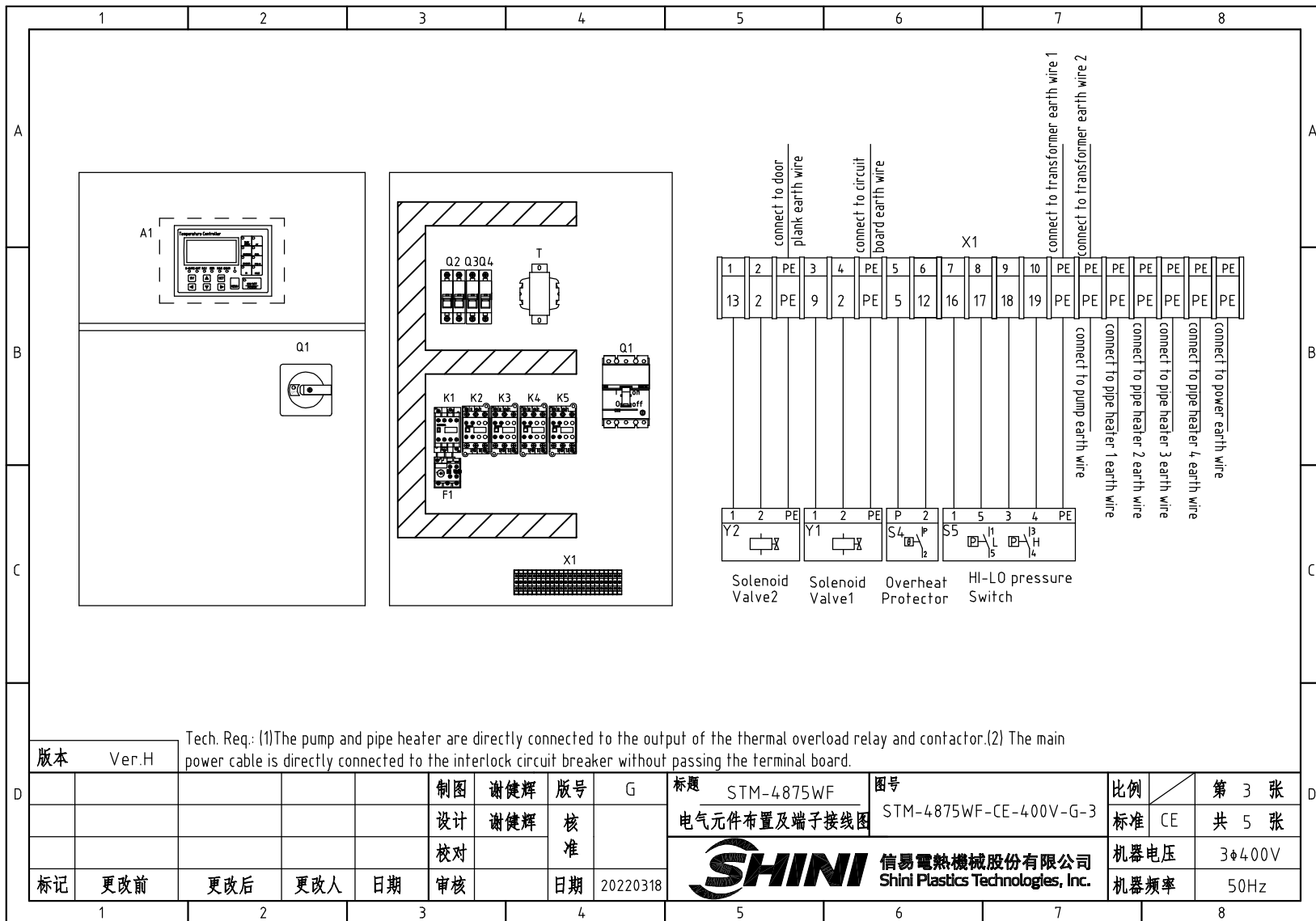
标题 STM-4875WF
主电路图

图号 STM-4875WF-CE-400V-G-1

比例	第 1 张
标准 CE	共 5 张
机器电压	3φ400V
机器频率	50Hz

SHINI 信易電熱機械股份有限公司
Shini Plastics Technologies, Inc.





Tech. Req.: (1)The pump and pipe heater are directly connected to the output of the thermal overload relay and contactor.(2) The main power cable is directly connected to the interlock circuit breaker without passing the terminal board.

版本 Ver.H

制图	谢健辉	版号	G
设计	谢健辉	核准	
校对			
标记	更改前	更改后	更改人
		日期	日期
			20220318

标题 STM-4875WF 图号 STM-4875WF-CE-400V-G-3
 电气元件布置及端子接线图

SHINI 信易電熱機械股份有限公司
 Shini Plastics Technologies, Inc.

比例	第 3 张
标准 CE	共 5 张
机器电压	3φ400V
机器频率	50Hz

1 2 3 4 5 6 7 8

A

A

B

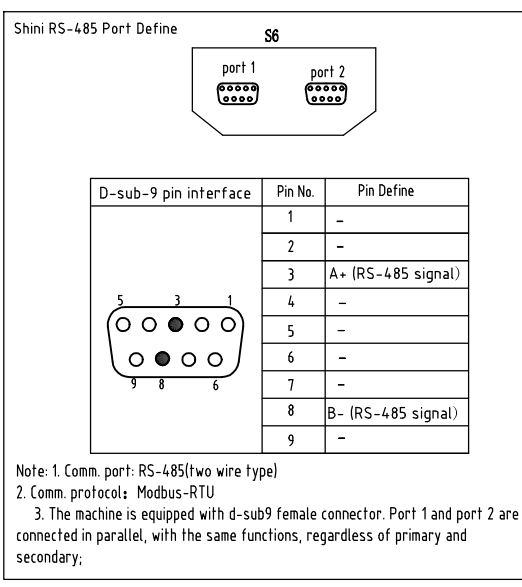
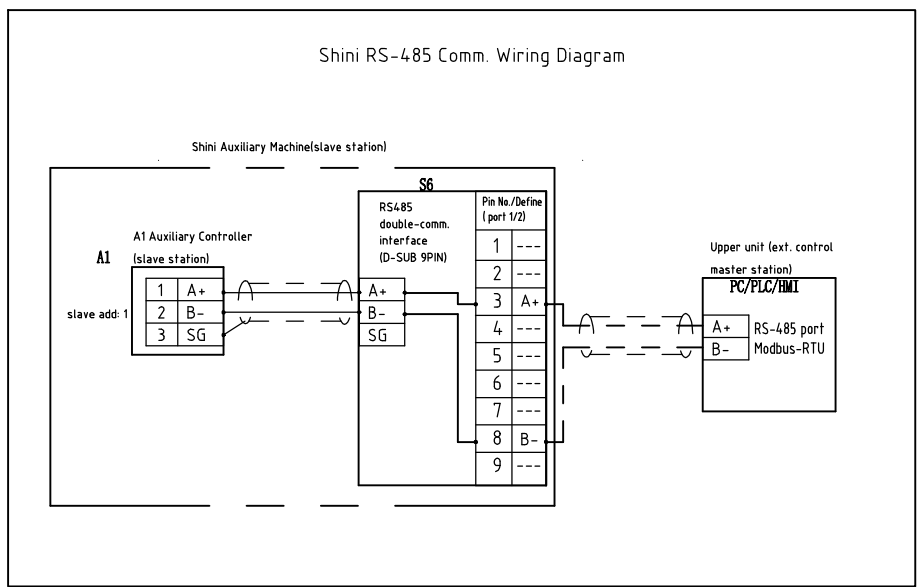
B

C

C

D

D



版本 Ver.H

制图	谢健辉	版号	G	标题	STM-4875WF	图号	STM-4875WF-CE-400V-G-4
设计	谢健辉	核准		通讯接线图			
校对		日期	20220318				
标记	更改前	更改后	更改人	日期			

					信易電熱機械股份有限公司 Shini Plastics Technologies, Inc.	比例	第 4 张
						标准	共 5 张
						机器电压	3φ400V
						机器频率	50Hz

1 2 3 4 5 6 7 8

1		2		3		4		5		6		7		8	
NO.	Symbol	Name		Manufacturer		Type		Specification		Number	Material number		Remark		
A	1	Q1	Interlock circuit breaker		ABB		A1A125TMF125/12503PFF		125A	1	YE41161400000				
	2		Release		ABB		SOR-C		24V-30V AC/DC(A1A2)	1	YE40243000900				
	3	Q2	Circuit breaker		TECO		BM-63C/2003S 2P		3A	1	YE40200203000				
	4	Q3	Circuit breaker		TECO		BM-63C/1003S 1P		3A	1	YE40100203000				
	5	Q4	Circuit breaker		TECO		BM-63C/1010S 1P		10A	1	YE40101000100				
	6	K1	Contactors		SIEMENS		3RT6018-1AB01		24VAC	1	YE00601802500				
	7	K2 K3 K4 K5	Contactors		SIEMENS		3RT6026-1AC20		24VAC	4	YE00602602600				
B	8	F1	Overload relays		SIEMENS		3RU6116-1KB0		9-12.5A	1	YE01169125000				
	9	T	Transformer		JIUXIN		IN=400/415V OUT=24V/230V		180VA/350mA	1	YE70040007400				
	10	S1	Thermocouple		SHINI		----		----	1	----		(1)		
	11	S2 S3	Thermocouple		SHINI		----		----	2	----		(1)(2)		
	12	S4	Overheat protector		TONCEAO		ZA300		250V 5(4)A	1	----		(1)		
	13	S5	HI-LO pressure switch		FENSHEN		P830HLM		H:5-30bar L:~0.7-6bar	1	----		(1)		
	14	S6	Connect to interface board RS-485(Dsub-9pin connector)		YUYUN		----		----	1	YE90048501200				
C	15		Shell RS485(SAL-700G-A-19)0		BINCHENG		----		----	1	YR40048500000				
	16	A1	Circuit board		YUYUN		TM-01-220VAC(with comm.)		180~430V 50/60Hz	1	YE81012200300				
	17	H1	Buzzer		----		PK-35A		24VAC/DC	1	YE84003500600				
	18	Y1 Y2	Solenoid valve		----		----		24VAC 50/60Hz	2	----		(1)		
	19	X1	Terminal Board		HONEYWELL		SK2.5		----	10	YE60002503200				
	20		Earth terminal board		HONEYWELL		GK2.5PE		----	4	YE60002503400				
	21		Earth terminal board		HONEYWELL		GK5PE		----	4	YE60000403500				
	22		Earth terminal board		HONEYWELL		GK35PE		----	1	YE60003503500				
	23		Terminal fittings E/GK series(Honeyware)		HONEYWELL		E/GK		----	6	YE60000003900				
D	24	M1	Motor		NY PUMP		5.5kW		400V 50Hz	1	----		(1)		
	25	EH1 EH2 EH3 EH4	Heater		SHINI		12kW		400V 50Hz	4	----		(1)		
	版本 Ver.H		Notes: (1)Non materials in the control box;(2)Optional water outlet and return water display function;												
D	标记		更改前	更改后	更改人	日期	审核	日期	20220318	标题 STM-4875WF 电气元件明细表一		图号 STM-4875WF-CE-400V-G-5		比例 标准 CE	第 5 张 共 5 张
										STM-4875WF		STM-4875WF-CE-400V-G-5		机器电压	3φ400V
										SHINI		信易電熱機械股份有限公司 Shini Plastics Technologies, Inc.		机器频率	50Hz
1		2		3		4		5		6		7		8	