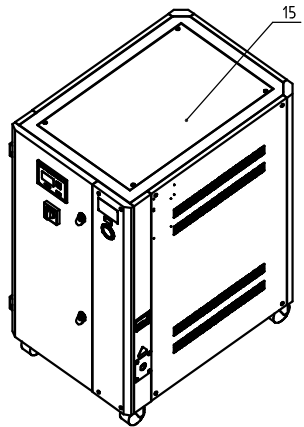
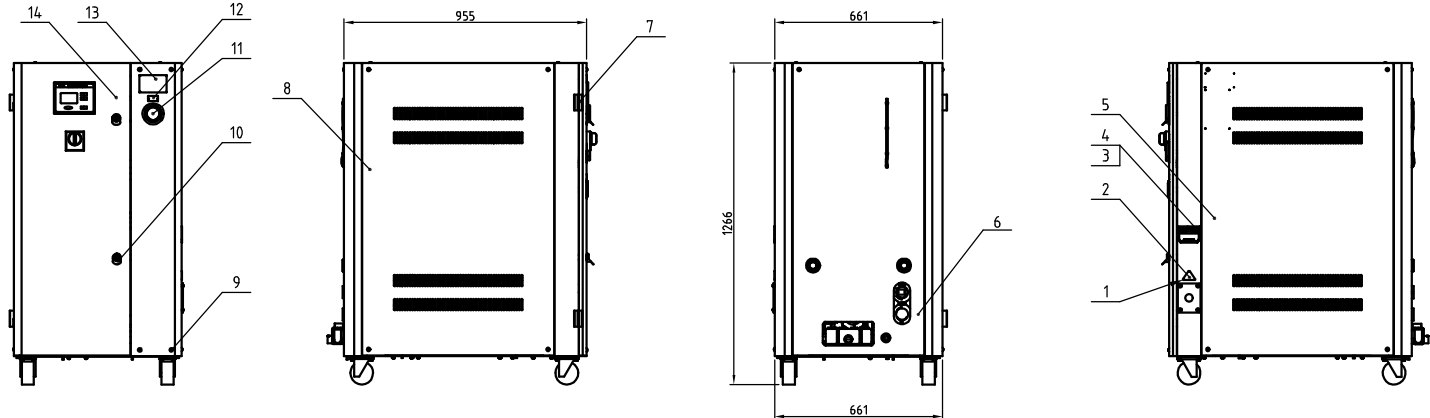


Cooling capacity inlet temperature 70 (kW/ton/RTons)	Cooling capacity inlet temperature 55 (kW/ton/RTons)	Cooling capacity inlet temperature 45 (kW/ton/RTons)	Total power (middle/high pressure)	Cooling water inlet (inch)	Cooling water outlet (inch)	Chilled water inlet (inch)	Chilled water outlet (inch)	Drain port (inch)	Water tank refill port (inch)	Cooling water flow (L/min)	Chilled water flow (L/min)	Water tank capacity (L)	Weight (kg)	Ver.
14/16	15/17	17/20	3.93/4.28kw	Rc1.5	Rc1.5	Rc1	Rc1	Rc1/2	Rc1/2	60.9	48.7	80	250	A



Tech. Req.:

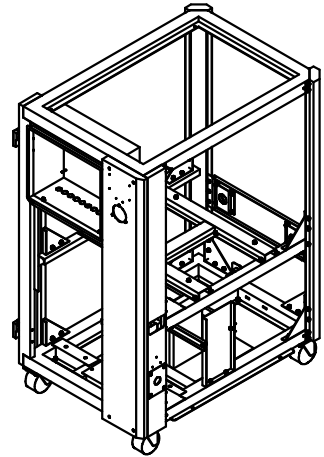
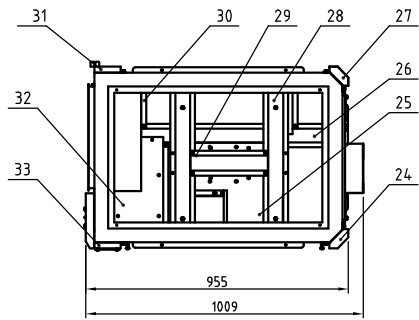
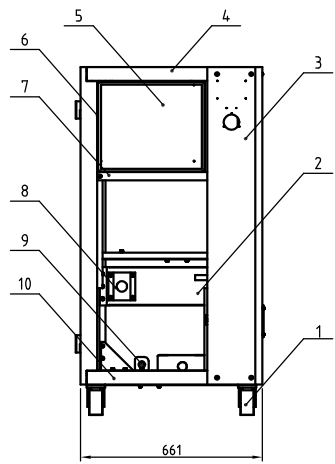
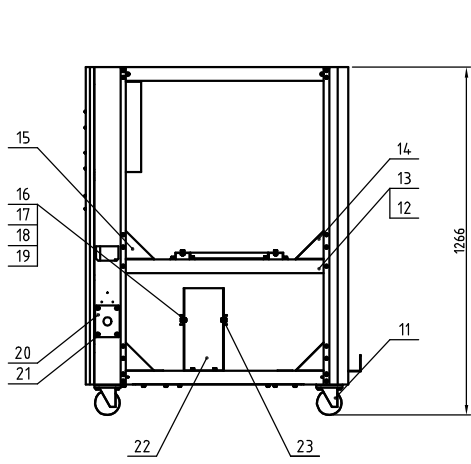
- 1.The sheet metal system is connected with nuts without scratches, which features less vibration;
- 2.The refrigerant system can withstand working pressure of 4.2MPa without leakage;
- 3.The water system working pressure is 7 bar without leakage;
- 4.All systems are assembled completely and the surface is clean.

No.	Material number	Name	Mat.	Num	Remarks
15	SIC-17W-R2-ALL-05	Top plate	SPCC1.5	1	
14	SIC-17W-R2-ALL-01	Front door plank	SPCC1.5	1	
13	YP30108680000	CE alu. nameplate 108-68	2024	1	
12	YP30425000000	Pump pressure gauge (alu. nameplate)	2024	1	
11	YW85001000100	Pressure gauge 0-10KG	2024	1	
10	YW00816100000	Door lock (MS816-1 with key)	Assembly	1	
9	YW62063500000	Large cross recessed flat head screw JIS1111 M6x35	2024	18	
8	SIC-17W-R2-ALL-02	Left side plate	SPCC1.5	1	
7	YW06203100400	Left chain	Assembly	2	
6	SIC-17W-R2-ALL-04	Rear plate	SPCC1.5	1	
5	SIC-17W-R2-ALL-03	Right side plate	SPCC1.5	1	
4	YR40048500000	Shell RS-485	Assembly	1	
3	YE90048501200	Conn. interface plate RS-485	Assembly	1	
2	YP31051650000	Triangle power 3 phase 400V	2024	1	
1	YW69020500000	Rivet GB/T 827 2x5	18		

制图	版号	B	标题	SIC-17W-R2	图号	SIC-17W-R2-ALL	比例	1:16	数量	1
设计	核		总装图							
校对	准									
标记	更改前	更改后	更改人	日期	审核	日期	表面要求	物料号		



版本号
A



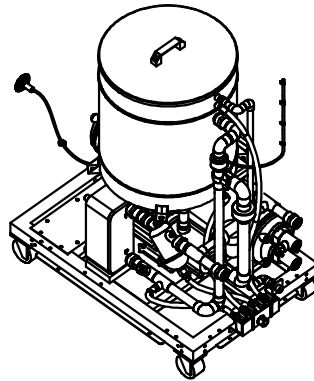
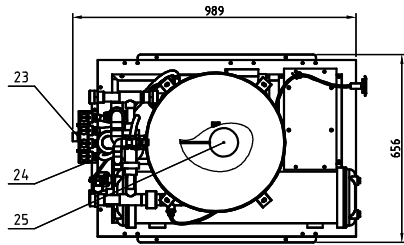
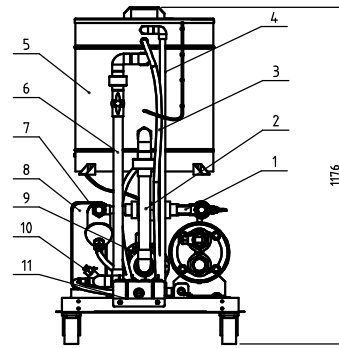
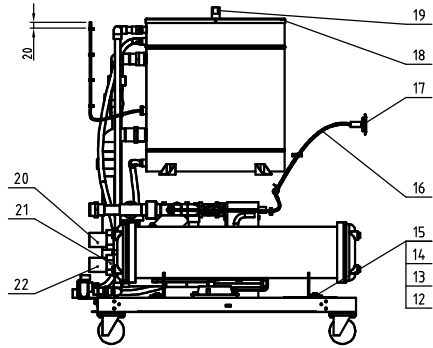
33	SIC-17W-R2-A-03	Right front column	SPCC2.0	1	
32	SIC-17W-R2-A-19	Compressor bottom plate	SPCC2.0	1	
31	SIC-17W-R2-A-02	Left front column	SPCC2.0	1	
30	SIC-17W-R2-A-18	Condenser support beam	SPCC2.0	2	
29	SIC-17W-R2-A-14	Water tank beam 2	SPCC2.0	1	
28	SIC-17W-R2-A-13	Water tank beam 1	SPCC2.0	2	
27	SIC-17W-R2-A-04	Left rear column	SPCC2.0	1	
26	SIC-17W-R2-A-17	Bottom middle beam	SPCC2.0	1	
25	SIC-17W-R2-A-20	Pump bottom plate	SPCC2.0	1	
24	SIC-17W-R2-A-05	Right rear column	SPCC2.0	1	
23	SIC-17W-R2-A-22	Plate exchange fixed frame 2	SPCC2.0	2	
22	SIC-17W-R2-A-21	Plate exchange fixed frame 1	SPCC2.0	2	
21	YW62051000100	Large cross recessed flat head screw JIS1111 M5x10	4.8	12	
20	BL50160000120	Wire clamp fixed plate	SPCC2.0	1	
19	YW60062000100	Hex. bolt GB/T5781 M6x20	4.8	124	
18	YW65006000100	Standard spring washer GB/T93 8	Mn65	124	
17	YW66061300000	Flat washer A GB/T97.16	14.0hv	150	
16	YW64000600300	Hex. nut GB/T6170 M6	5.0	164	
15	SIC-33A-R2-A-34	Left triangle plate	SPCC2.0	5	
14	SIC-33A-R2-A-35	Right triangle plate	SPCC2.0	5	
13	SIC-17W-R2-A-11	Left middle beam	SPCC2.0	1	
12	SIC-17W-R2-A-12	Right middle beam	SPCC2.0	1	
11	YW03000300000	3" black movable PP wheel	SPCC2.0	2	
10	SIC-17W-R2-A-09	Bottom frame	SPCC2.0	1	
9	SIC-17W-R2-A-23	Water pipe fixed plate	SPCC2.0	1	
8	SIC-17W-R2-A-16	Inlet and outlet water pipe fixed plate	SPCC2.0	2	
7	SIC-17W-R2-A-08	Front middle beam	SPCC2.0	1	
6	SIC-17W-R2-A-06	Control box	SPCC2.0	1	
5	SIC-17W-R2-A-07	Electrical bottom plate	SECC1.5	1	
4	SIC-17W-R2-A-10	Top frame	SPCC2.0	1	
3	SIC-17W-R2-A-01	Gauge plate	SPCC2.0	1	
2	SIC-17W-R2-A-15	Inlet water pipe fixed beam	SPCC2.0	1	
1	YW03000300200	3" black movable PP wheel assembly	assembly	2	
No.	Material number	Name	Mat.	Num	Remark

Tech. Req:
1.Lock up the sheet metals tightly with fastening screws according to standard torque.
2.All welding parts shall be polished;

标记	更改前	更改后	更改人	日期	制图	版号	B	标题	SIC-17W-R2	图号	SIC-17W-R2-A-ALL	比例	1:15	数量	1
					设计	版号		标题	SIC-17W-R2	图号	SIC-17W-R2-A-ALL	比例	1:15	数量	1
					校对	核准		标题	SIC-17W-R2	图号	SIC-17W-R2-A-ALL	比例	1:15	数量	1
					审核	日期	20190815	标题	SIC-17W-R2	图号	SIC-17W-R2-A-ALL	比例	1:15	数量	1



表面要求
物料号



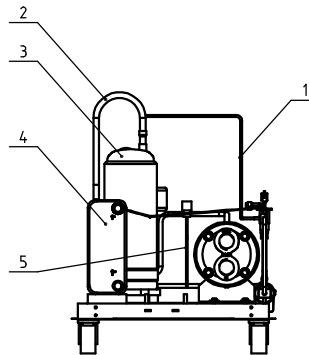
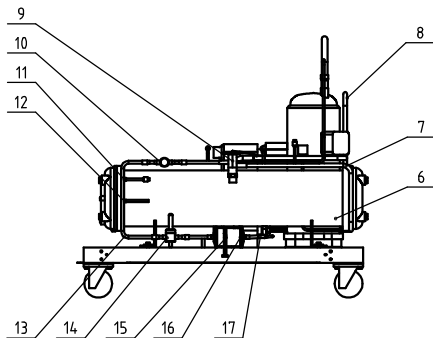
Tech. Req:

- 1.The thread connector must be sealed with material tape;
- 2.Use special glue to connect the PVC-U water pipe, and no water leakage within 0.7Mpa pressure;
- 3.No water supply is allowed 24 hours after assembly;

No.	Material number	Name	Mat.	Num	Remarks
25	YW59010200000	Float ball switch copper 3"	assembly	1	
24	YW02182900000	Stainless steel pipe clamp (8-20)	assembly	8	
23	YW50001200300	Four-in-one ball 1/2" water collector 1/2"	assembly	1	
22	YW500015014.00	Galvanized female straight connector 1/2"	Q235A	1	
21	YW50001500100	Water pipe female connector 1/2" (male thread)	Q235A	2	
20	YW59010200000	Galvanized water pipe three way 1/2" 90°	Q235A	1	
19	BW20012000040	Alu square handle 120L(Disk)	assembly	1	
18	SIC-17W-R2-B-08-01	Water tank cover	assembly	1	
17	YW85001000100	Water pressure gauge	assembly	1	
16	YR60620000100	Transparent air pipe DM/n/vall	assembly	2M	
15	YW60082500100	Hex. bolt GB/T5183 M8-25		8	
14	YW65008000100	Standard spring washer GB/T93.8	Mn65	8	
13	YW66082200100	Large washer C grade GB/T96.8	14.0Hv	16	
12	YW64.080600000	Hex nut GB/T6170 M8	5.0	8	
11	YW020004.00000	Stainless steel three way 4"	assembly	2	
10	YW8504.3600000	Flow switch SEN-BP43w	assembly	2	
9	YM2104.4000100	Water pump CHLFA-40M6	assembly	1	
8	SIC-17W-R2-C-01-01	Plate evaporator	assembly	1	
7	SIC-17W-R2-B-02-01	Return water pipe assembly	PVC-U	1	
6	SIC-17W-R2-B-03-01	Plate exchange outlet pipe assembly	PVC-U	1	
5	SIC-17W-R2-B-07-01	Water Tank	PVC-U	1	
4	SIC-17W-R2-B-06-01	Refill water pipe assembly	PVC-U	1	
3	YR60051000000	Steel wire hose 2"	assembly	3M	
2	SIC-17W-R2-B-04-01	Water pump suction pipe assembly	PVC-U	1	
1	SIC-17W-R2-B-05-01	Outlet water pipe assembly	PVC-U	1	

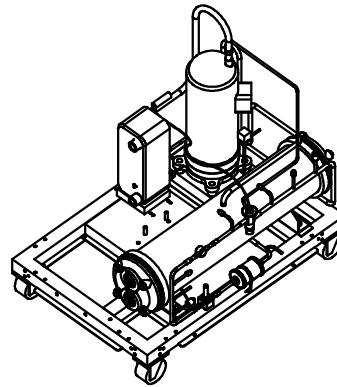
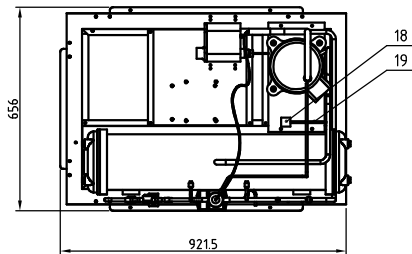
制图	版号	0	标题	SIC-17W-R2	图号	SIC-17W-R2-B-ALL	比例	1:13	数量	1
设计	核准		水系统							
校对	审核									
标记	更改前	更改后	更改人	日期	审核	日期	20190101			
							表面要求			
							物料号			





Tech. Req.:

- 1.It's recommended to contain at least 20% silver in the welding rod during copper and stainless steel welding, contain 5% silver in the welding rod during copper and copper welding. All parts shall be installed firmly and perfectly. When using low phosphorus welding rod, higher welding technologies shall be required;
- 2.During welding, it should have anti-oxidation protection. After welding, there shall be no ash and foreign matters in the pipeline and the welding ports shall be smooth;
- 3.After the assembly, fill the refrigerant system with 3.2Mpa nitrogen to maintain the pressure, and the pressure gauge reading doesn't change within 10 hours.
- 4.The surface of copper pipe and evaporator in low temp. zone shall be covered with insulation cotton.
- 5.The thermocoupler head must have insulation treatment;

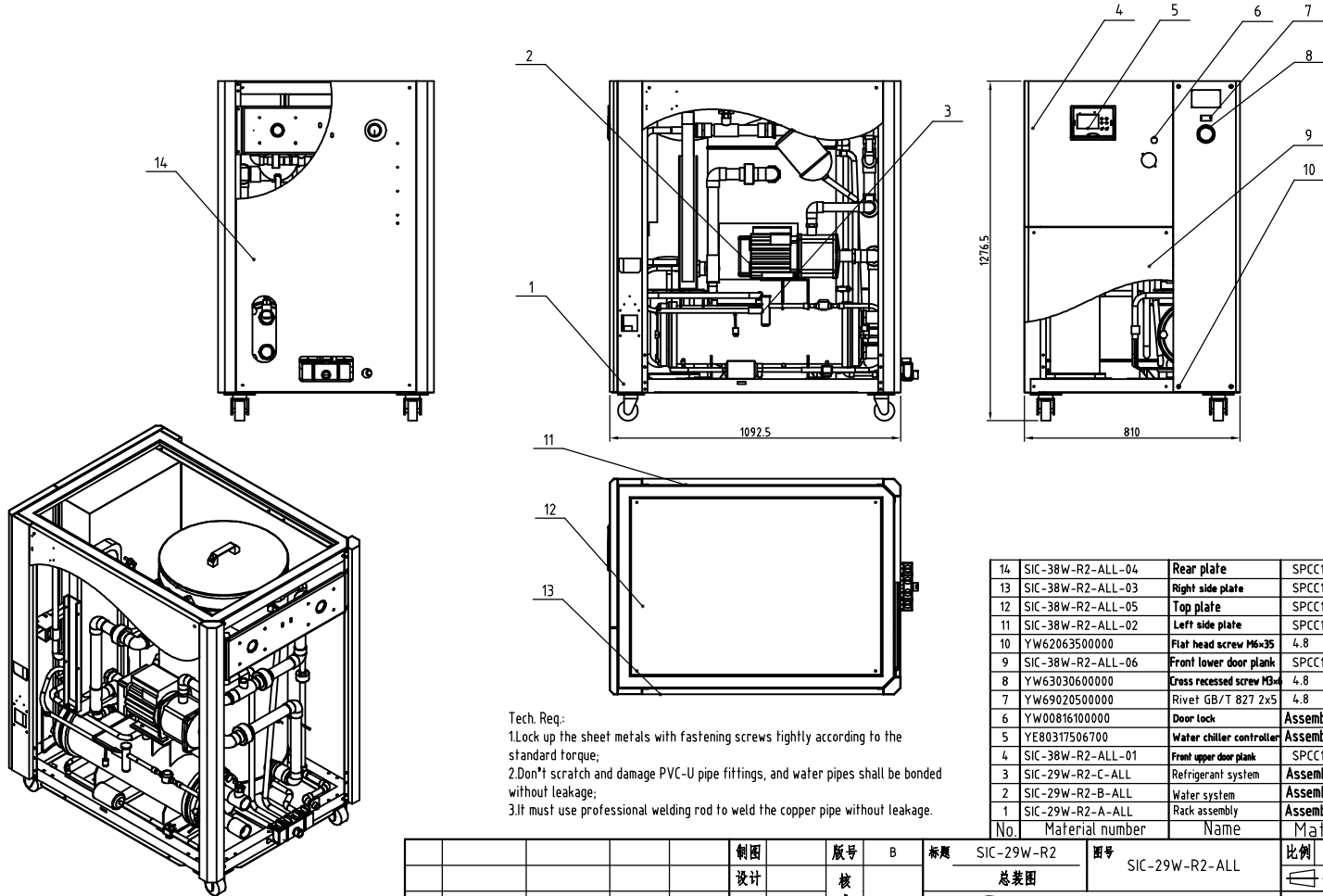


19	SIC-17W-R2-C-09	Bypass valve pipe 2	TP2M	1	
18	YE32651600200	Hot gas bypass valve	assembly	1	
17	SIC-17W-R2-C-07	Liquid pipe 3	TP2M	1	
16	YW85381200000	Drying filter	assembly	1	
15	YW020004.00000	Stainless steel pipe clamp 4	assembly	1	
14	YE32651600200	Liquid pipe solenoid valve	assembly	1	
13	SIC-17W-R2-C-05	Liquid pipe 1	TP2M	1	
12	SIC-17W-R2-C-11	Copper pipe connector	TP2M	1	
11	YW850104.00300	Liquid injection needle valve	assembly	4	
10	YW85001300100	Liquid level indicator HHL-11T3	assembly	1	
9	YW85413800000	Expansion valve BAEL-1/2	assembly	1	
8	SIC-17W-R2-C-04	Exhaust air pipe	TP2M	1	
7	SIC-17W-R2-C-06	Liquid pipe 2	TP2M	1	
6	SIC-17W-R2-C-02	Condenser	assembly	1	
5	SIC-17W-R2-C-08	Bypass valve pipe 1	TP2M	1	
4	SIC-17W-R2-C-01	Plate evaporator	assembly	1	
3	YM70504.9000000	Compressor ES04DH	assembly	1	
2	SIC-17W-R2-C-03	Return air pipe	TP2M	1	
1	SIC-17W-R2-C-10	Equalizer pipe	TP2M	1	
No.	Material number	Name	Mat.	Num.	Remarks

					制图	版号	B	标题	SIC-17W-R2	图号	SIC-17W-R2-C-ALL	比例	1:13	数量	1
					设计	核			制冷系统						
					校对	准									
					审核										
标记	更改前	更改后	更改人	日期	审核	日期	20190815								
											表面要求				
											物料号				



Cooling capacity Inlet temperature 7°C 24/28	Cooling capacity Inlet temperature 7°C 27/31	Cooling capacity Inlet temperature 7°C 29/33	Water power (middle/high pressure) 6.08kw	Cooling water inlet (inch) Rc2	Cooling water outlet (inch) Rc2	Chilled water inlet (inch) Rc1.25	Chilled water outlet (inch) Rc1.25	Drain port (inch) Rc1/2	Water tank refill port (inch) Rc1/2	Cooling water flow (L/min) 103.9	Chilled water flow (L/min) 83.1	Water tank capacity (L) 150	Weight (kg) 330	Var. A
--	--	--	---	-----------------------------------	------------------------------------	--------------------------------------	---------------------------------------	----------------------------	--	-------------------------------------	------------------------------------	--------------------------------	--------------------	-----------

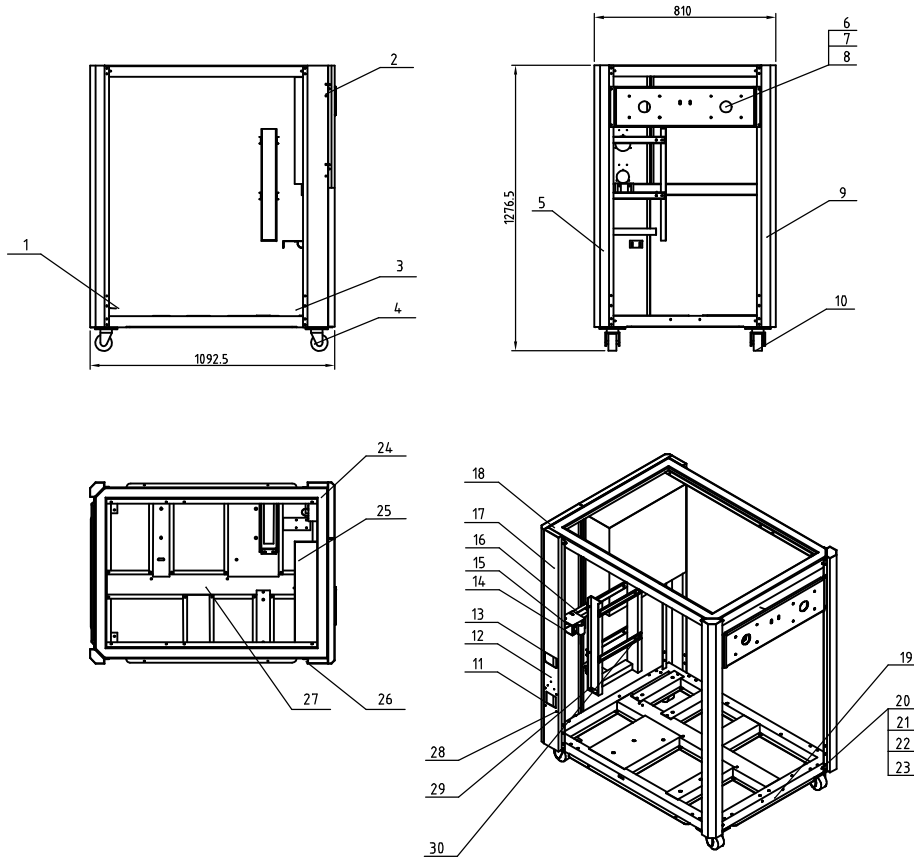


Tech. Req:
 1.Lock up the sheet metals with fastening screws tightly according to the standard torque;
 2.Don't scratch and damage PVC-U pipe fittings, and water pipes shall be bonded without leakage;
 3.If must use professional welding rod to weld the copper pipe without leakage.

14	SIC-38W-R2-ALL-04	Rear plate	SPCC1.5	1	borrow
13	SIC-38W-R2-ALL-03	Right side plate	SPCC1.5	1	borrow
12	SIC-38W-R2-ALL-05	Top plate	SPCC1.5	1	borrow
11	SIC-38W-R2-ALL-02	Left side plate	SPCC1.5	1	borrow
10	YW62063500000	Flat head screw M6x35	4.8	20	
9	SIC-38W-R2-ALL-06	Front lower door plank	SPCC1.5	1	borrow
8	YW63030600000	Cross recessed screw M6x4	4.8	3	
7	YW69020500000	Rivet GB/T 827 2x5	4.8	13	
6	YW00816100000	Door lock	Assembly	1	
5	YE80317506700	Water chiller controller	Assembly	1	
4	SIC-38W-R2-ALL-01	Front upper door plank	SPCC1.5	1	borrow
3	SIC-29W-R2-C-ALL	Refrigerant system	Assembly	1	
2	SIC-29W-R2-B-ALL	Water system	Assembly	1	
1	SIC-29W-R2-A-ALL	Rack assembly	Assembly	1	

				制图	版号	B	标题	SIC-29W-R2	图号	SIC-29W-R2-ALL	比例	1:14	数量	1	Remarks			
				设计	核		总装图											
				校对	准													
				表面要求														
				物料号														
标记	更改前	更改后	更改人	日期	审核	日期	信易智能机械股份有限公司 SHINI Precision Technologies, Inc.											

版本号
A



30	SIC-33A-R2-A-18	Plate exchange bottom plate	SPCC2.0	4	borrow
29	SIC-33A-R2-A-17	Plate exchange fixed plate	SPCC3.0	2	borrow
28	YW62051000100	Large cross recessed flat head screw M5x10	4.8	6	
27	SIC-29W-R2-A-ALL-01	Bottom frame assembly	assembly	1	
26	SIC-38W-R2-A-02	Left front column	SPCC2.0	1	borrow
25	SIC-38W-R2-A-06	Control box	SPCC2.0	1	borrow
24	SIC-38W-R2-A-01	Meter plate	SPCC2.0	1	borrow
23	YW64.000600300	Hex. nut M6	5.0	46	
22	YW65006000100	Standard spring washer GB/T93.6	65Mn	90	
21	YW66061300000	Flat washer A GB/T93.6	140HV	90	
20	YW60062000100	Hex. bolt M6x20	4.8	90	
19	SIC-33A-R2-A-38	Water separator fixed plate	SPCC2.0	1	borrow
18	SIC-38W-R2-A-10	Top frame	SPCC2.0	1	borrow
17	SIC-38W-R2-A-03	Right front column	SPCC2.0	1	borrow
16	SIC-38W-R2-A-08	Front middle beam	SPCC3.0	1	borrow
15	SIC-29W-R2-A-07	Air pipe fixed plate	SPCC2.0	1	
14	SIC-29W-R2-A-08	Return air pipe fixed clamp support	SPCC2.0	1	
13	YE9004.8501200	Comm. interface plate RS-485	assembly	1	
12	YP31051650000	Triangle power	assembly	1	
11	SG-S-01	Wire clamp fixed plate M32	SPCC2.0	1	
10	YW03000300200	3" black movable wheel brake	assembly	2	
9	SIC-38W-R2-A-04	Left rear column	SPCC2.0	1	borrow
8	SIC-29W-R2-A-03	Inlet and outlet water pipe fixed raised plate	SPCC2.0	2	borrow
7	SIC-29W-R2-A-04	Inlet and outlet water pipe fixed beam	SPCC3.0	1	borrow
6	SIC-38W-R2-A-15-01	Inlet and outlet water pipe fixed block	SPCC3.0	2	borrow
5	SIC-38W-R2-A-05	Right rear column	SPCC2.0	1	borrow
4	YW03000300000	3" black wheel brake	assembly	2	
3	SIC-33A-R2-A-36	Triangle plate 2	SPCC2.0	4	borrow
2	YW06203100400	Large chain (L203-1L Left)	assembly	2	
1	SIC-33A-R2-A-35	Triangle plate 1	SPCC2.0	4	borrow
No.	Material number	Name	Mat.	Num.	Remark

Tech. Req:

1.Lock up the sheet metals tightly with fastening screws according to standard torque.

制图	版号	A	标题	SIC-29W-R2	图号	SIC-29W-R2-A-ALL	比例	1:17	数量	1
设计	核准		机架组合							
校对	日期	20190301								
标记	更改前	更改后	更改人	日期	审核					

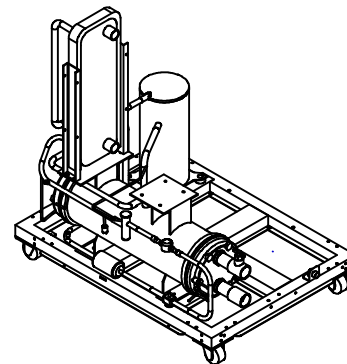
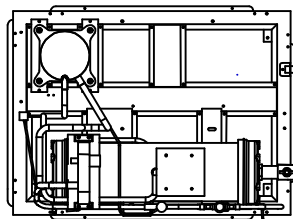
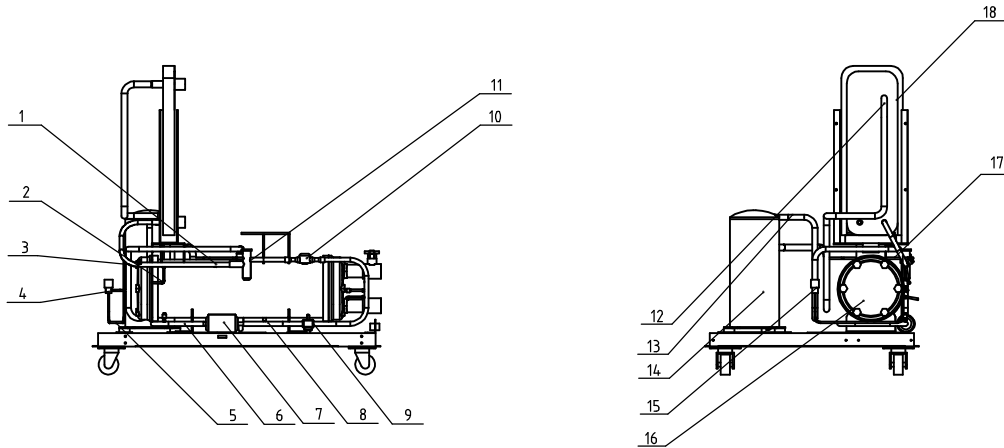


信昌電機機械股份有限公司
SHINI Electric Machinery Co., Ltd.

表面要求
物料号

材质 组合件
表面要求
物料号

版本号
A



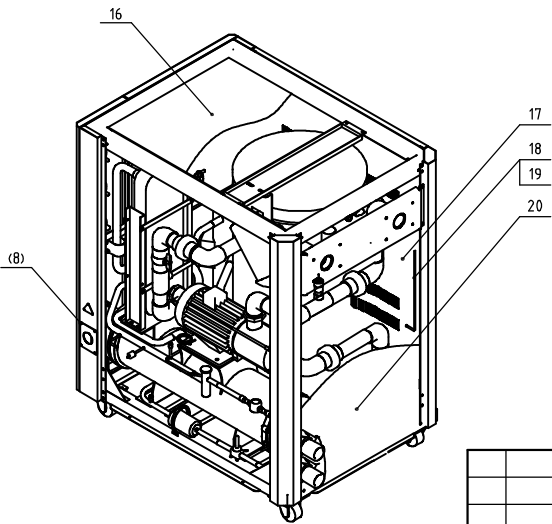
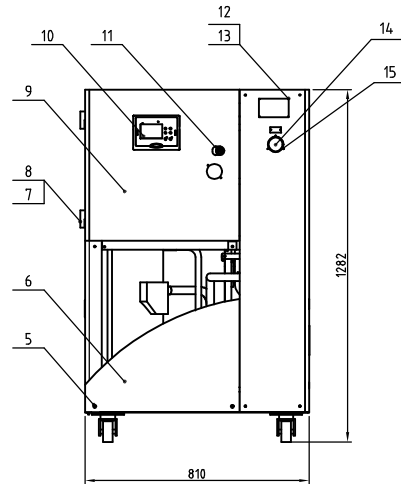
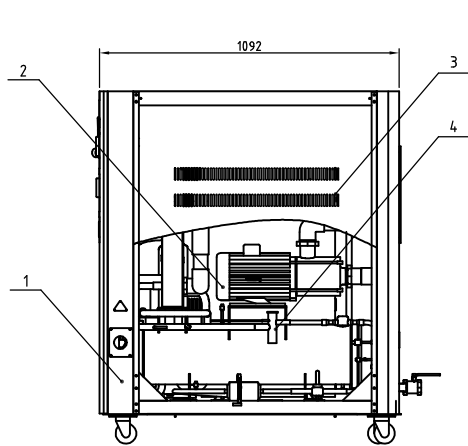
Tech. Req:

- 1.It's recommended to contain at least 20% silver in the welding rod during copper and stainless steel welding, contain 5% silver in the welding rod during copper and copper welding. All parts shall be installed firmly and perfectly. When using low phosphorus welding rod, higher welding technologies shall be required;
- 2.During welding, it should have anti-oxidation protection. After welding, there shall be no ash and foreign matters in the pipeline and the welding ports shall be smooth;
- 3.After the assembly, fill the refrigerant system with 3.2Mpa nitrogen to maintain the pressure, and the pressure gauge reading doesn't change within 10 hours.
- 4.The surface of copper pipe and evaporator in low temp. zone shall be covered with insulation cotton.
- 5.The thermocoupler head must have insulation treatment;

18	SIC-28W-R2-C-01	Plate evaporator	assembly	1	
17	YS30063500000	Equalizing pipe	assembly	1	
16	SIC-28W-R2-C-02	Condenser	assembly	1	
15	YE9004.24.02100	Hot gas bypass valve FDF-4A	assembly	1	
14	YM70006100000	Compressor 2P9KCE-TFD	assembly	1	
13	SIC-28W-R2-C-03	Exhaust air pipe	TP2M	1	
12	SIC-28W-R2-C-04	Return air pipe	TP2M	1	
11	YW85651200100	Expansion valve BAE6ZW1955FT	assembly	1	
10	YW85001500100	Liquid level indicator FHM-1T1S	assembly	1	option
9	YE90207506800	Liquid pipe solenoid valve 200RD7T5T	assembly	1	option
8	SIC-29W-R2-C-06	Filter outlet liquid pipe	TP2M	1	
7	YW85016500100	Drying filter EK305S	assembly	1	
6	SIC-28W-R2-C-05	Filter inlet liquid pipe	TP2M	1	
5	YS30063500000	Bypass valve exhaust air pipe	TP2M	1	
4	YS30063500000	Bypass valve air inlet pipe	TP2M	1	
3	SIC-29W-R2-C-07	Expansion valve outlet pipe	TP2M	1	
2	YS30063500000	Quick connector pipe	TP2M	2	
1	YW850104.00300	Liquid injection needle valve	assembly	6	
No.	Material number	Name	Mat.	Num	Remarks

					制图	版号	B	标题	SIC-29W-R2	图号	SIC-29W-R2-C-ALL	比例	1:15	数量	1
					设计	核		冷媒系统				表面要求	材质	组合件	
					校对	准						物料号			
标记	更改前	更改后	更改人	日期	审核	日期	20190301	SHINI	信昌电热机械股份有限公司 Shini Electric Technology Co., Ltd.						

Cooling capacity water temperature 7°C by 1000/10min	Cooling capacity water temperature 12°C by 1000/10min	Water capacity water temperature 7°C by 1000/10min	Water capacity water temperature 12°C by 1000/10min	Total power (middle/high pressure)	Cooling water inlet (inch)	Cooling water outlet (inch)	Chilled water inlet (inch)	Chilled water outlet (inch)	Drain port (inch)	Water tank refill port (inch)	Cooling water flow (L/min)	Chilled water flow (L/min)	Water tank capacity (L)	Height (kg)	Ver.
29/33	32/37	38/44	38/44	8.3/9.0kw	Rc2	Rc2	Rc1.5	Rc1.5	Rc1/2	Rc1/2	136.1	108.9	150	350	A

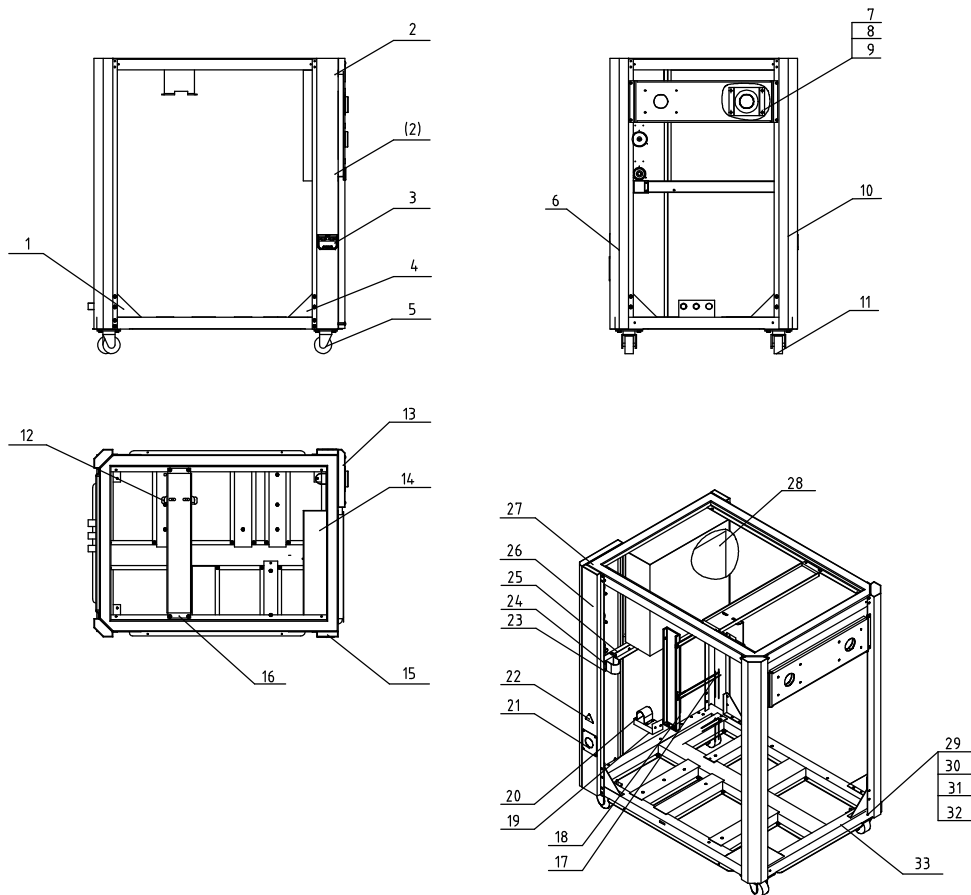


Tech. Req:
 1.The sheet metal system is connected with nuts without scratches, which features less vibration;
 2.The refrigerant system can withstand working pressure of 4.2MPa without leakage;
 3.The water system working pressure is 7 bar without leakage;
 4.All systems are assembled completely and the surface is clean.

20	SIC-38W-R2-ALL-04	Rear plate	SPCC1.5	1	
19	YR9000022000	Air conditioner band		4	
18	YR60620000100	Transparent air pipe M6	Structure parts	3m	
17	SIC-38W-R2-ALL-02	Left side plate	SPCC1.5	1	
16	SIC-38W-R2-ALL-05	Top plate	SPCC1.5	1	
15	YW63030600000	Cross recessed pan head screw M6x3		4.8	3
14	YP30425000000	Pump pressure gauge	Assembly		1
13	YP30108680000	Nameplate	Assembly		1
12	YW69020500000	Rivet 2x5		4.8	21
11	YW00816100000	Door lock	SPCC1.5		1
10	YE80317501900	Water chiller controller	Assembly		1
9	SIC-38W-R2-ALL-01	Front upper door plank	SPCC1.5		1
8	YW62051000100	Large cross recessed pan head screw M6x19		4.8	8
7	YW06203100400	Large chain CL203-11left	Structure parts		2
6	SIC-38W-R2-ALL-06	Front lower door plank	SPCC1.5		1
5	YW62063500000	Flat head screw M6x35		4.8	12
4	SIC-38W-R2-C-ALL	Refrigerant system	Assembly		1
3	SIC-38W-R2-ALL-03	Right side plate	SPCC1.5		1
2	SIC-38W-R2-B-ALL	Water medium system	Assembly		1
1	SIC-38W-R2-A-ALL	Rack assembly	Assembly		1
No.	Material number	Name	Mat.	Num	Remarks

制图	版号	A	标题	SIC-38W-R2	图号	SIC-38W-R2-ALL	比例	1:14	数量	1
设计	核准		标题	总装图						
校对										
审核										
标记	更改前	更改后	更改人	日期	审核	日期	表面要求			
							物料号			





33	SIC-38W-R2-A-ALL-01	Bottom frame assembly	assembly	1	
32	YW64000600300	Hex. nut M6	5.0	74	
31	YW65006000100	Spring washer GB/T93 6	65Mn	118	
30	YW66061300000	Flat washer A GB/T93 6	14.0HV	118	
29	YW60062000100	Hex. bolt M6x20	4.8	118	
28	SIC-38W-R2-A-07	Electrical bottom plate	SECC1.5	1	
27	SIC-38W-R2-A-10	Top frame	SPCC2.0	1	
26	SIC-38W-R2-A-03	Right front column	SPCC2.0	1	
25	SIC-38W-R2-A-08	Front middle beam	SPCC2.0	1	
24	SIC-33A-R2-A-25	Return air pipe fixed clamp support	SPCC1.0	1	borrow
23	SIC-38W-R2-A-16	Return air pipe fixed connectro block	SPCC2.0	1	
22	YP31051650000	Triangle power		1	
21	SG-S-01	Wire clamp fixed plate H32	SPCC2.0	1	
20	SIC-33A-R2-A-24	Exhaust pipe fixed clamp	SPCC1.0	1	borrow
19	SIC-38W-R2-A-19	Exhaust pipe fixed clamp	SPCC3.0	1	
18	SIC-38A-R2-A-20	Plate exchange fixed plate	SPCC3.0	2	
17	SIC-33A-R2-A-18	Evaporator fixed plate	SPCC2.0	4	borrow
16	SIC-38W-R2-A-11	Filter fixed beam	SPCC3.0	1	
15	SIC-38W-R2-A-02	Left front column	SPCC2.0	1	
14	SIC-38W-R2-A-06	Control box	SPCC1.5	1	
13	SIC-38W-R2-A-01	Meter plate	SPCC2.0	1	
12	SIC-38W-R2-A-12	Filter fixed block	SPCC3.0	1	
11	YW03000300000	3" black wheel brake	assembly	2	
10	SIC-38W-R2-A-04	Left rear column	SPCC2.0	1	
9	SIC-33A-R2-A-30	Inlet and outlet water pipe fixed folded plate	SPCC2.0	2	borrow
8	SIC-38W-R2-A-15	Inlet and outlet water pipe fixed beam	SPCC3.0	1	
7	SIC-33A-R2-A-29-01	Inlet and outlet water pipe fixed block	SPCC3.0	2	borrow
6	SIC-38W-R2-A-03	Right rear column	SPCC2.0	1	
5	YW03000300200	3" black wheel/ movable	assembly	2	
4	SIC-33A-R2-A-36	Triangle plate 2	SPCC2.0	4	borrow
3	YE90048501200	Comm. interface plate RS-485	assembly	1	
2	YW62051000100	十字槽大扁头螺钉M5x10	4.8	6	
1	SIC-33A-R2-A-35	Triangle plate 1	SPCC2.0	4	borrow
No.	Material number	Name	Mat.	Num.	Remark

Tech. Req:

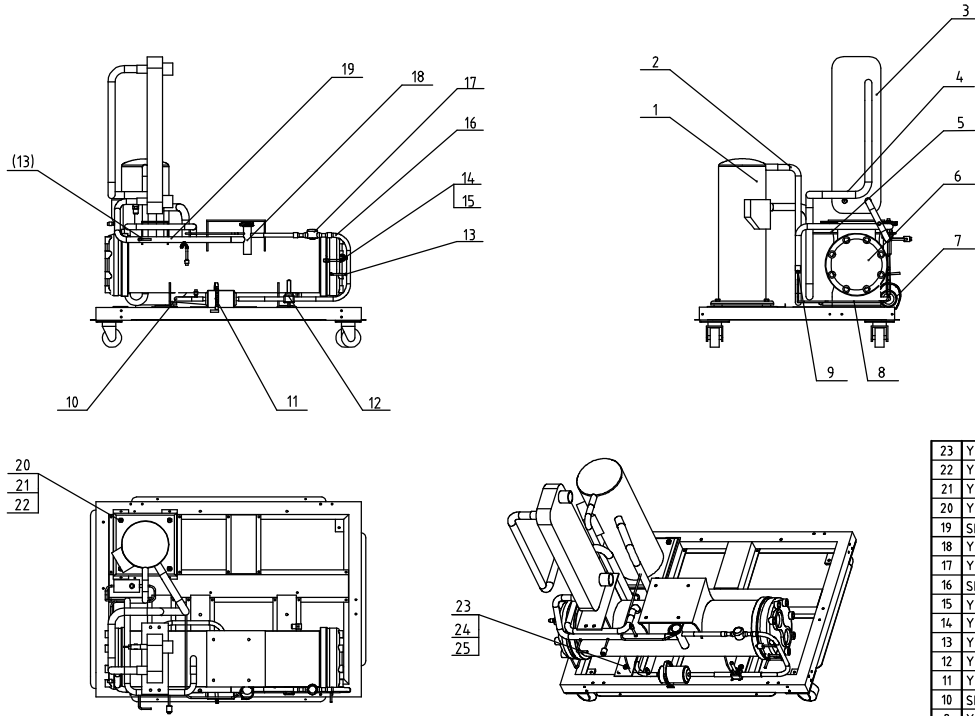
1.Lock up the sheet metals rightly with fastening screws according to standard torque.

制图	版号	A	标题	SIC-38W-R2	图号	SIC-38W-R2-A-ALL
设计	核		机架组合			
校对	准					
标记	更改前	更改后	更改人	日期	审核	日期 20190301



比例	1:17	数量	1
表面要求		材质	组合件
物料号			

版本号
A

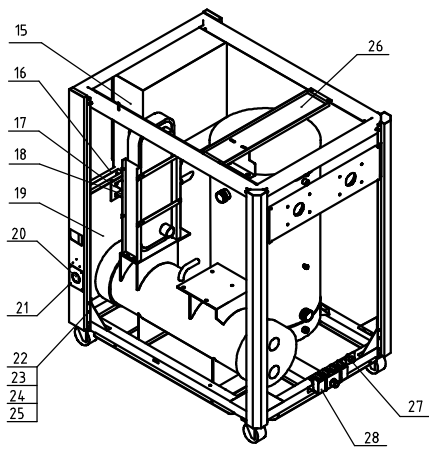
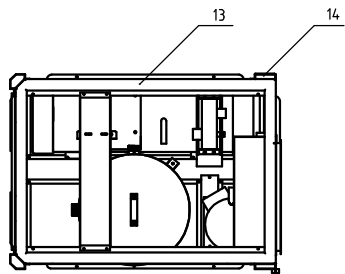
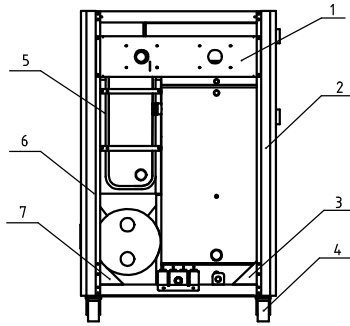
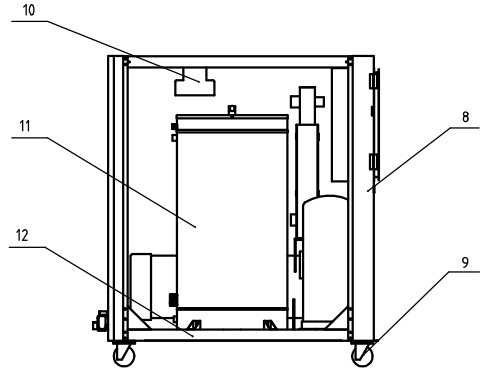


23	YW60082000200	Hex. bolt M6-20	8.8	4	
22	YW66081600000	Flat washer Ø.4×16×1.6	14.0HV	8	
21	YW65008000100	Spring washer GB/T93 8	65Mn	8	
20	YW60084000100	Hex. bolt M8×40	4.8	4	
19	SIC-38W-R2-C-07	Expansion valve outlet pipe	TP2M	1	
18	YW85712500000	Expansion valve BAET-1/2	assembly	1	
17	YW85001500100	Liquid level indicator HM-ITTS	assembly	1	option
16	SIC-38W-R2-C-06	Filter liquid outlet pipe	TP2M	1	
15	YW59001400600	Copper three way 2"	TP2	2	
14	YW85010400300	Liquid injection needle valve	assembly	6	
13	YS30063500000	Quick connector pipe	TP2M	0.2m	
12	YE90207506800	Liquid pipe solenoid valve	assembly	1	option
11	YW02000400000	Stainless steel pipe clamp 4"	assembly	1	
10	SIC-38W-R2-C-05	Filter liquid inlet pipe	TP2M	1	
9	YE90042402100	Hot gas bypass valve FDF-4A	assembly	1	
8	SIC-38W-R2-C-08	Bypass valve outlet air pipe	TP2M	1	
7	YW85016500100	Drying filter EK3055	assembly	1	
6	SIC-38W-R2-C-02	Condenser	assembly	1	
5	YS30063500000	Expansion valve equalizer pipe	TP2M	0.4m	
4	SIC-38W-R2-C-03	Return air pipe	TP2M	1	
3	SIC-38W-R2-C-01	Plate evaporator	assembly	1	
2	SIC-38W-R2-C-04	Exhaust air pipe	TP2M	1	
1	YM70012201600	Compressor	assembly	1	
No.	Material number	Name	Mat.	Num	Remarks

Tech. Req:
 1.It's recommended to contain at least 20% silver in the welding rod during copper and stainless steel welding, contain 5% silver in the welding rod during copper and copper welding. All parts shall be installed firmly and perfectly. When using low phosphorus welding rod, higher welding technologies shall be required;
 2.During welding, it should have anti-oxidation protection. After welding, there shall be no ash and foreign matters in the pipeline and the welding parts shall be smooth;
 3.After the assembly, fill the refrigerant system with 3.2Mpa nitrogen to maintain the pressure, and the pressure gauge reading doesn't change within 10 hours.
 4.The surface of copper pipe and evaporator in low temp. zone shall be covered with insulation cotton.
 5.The thermocoupler head must have insulation treatment;

					制图	版号	B	标题	SIC-38W-R2	图号	SIC-38W-R2-C-ALL	比例	1:15	数量	1
					设计	核		冷媒系统						材质	组合件
					校对	准								表面要求	
标记	更改前	更改后	更改人	日期	审核	日期	20190301	SHINI	无锡雪熊机械股份有限公司	Shini Pumps & Valves, Inc.	物料号				

版本号
A



28	SIC-33A-R2-A-38	Water separator fixed plate	H58	1	borrow
27	SIC-17W-R2-A-13	Water pipe fixed plate	SPCC2.0	1	borrow
26	SIC-56W-R2-A-17	Filter fixed beam	SPCC3.0	1	
25	YW66061300000	Flat washer A grade GB/T197.1 6-Longzine	14OHV	150	
24	YW65006000100	Standard spring washer GB/T193 6-Longzine	65Mn	120	
23	YW64000600300	Hex. nut GB/T6170 H6-Longzine	5.0	120	
22	YW60062000100	Hex. bolt M6.20-12.9-Longzine	4.8	120	
21	YW67481900000	Cross recessed pan head self-tapping screw M4.8x15	4.8	20	
20	BL02010000020	Wire clamp fixed plate H32	SPCC2.0	1	
19	SIC-57W-R2-A-01	Meter plate	SPCC15	1	
18	SIC-57W-R2-A-20	Copper pipe fixed plate	SPCC3.0	1	
17	SIC-57W-R2-A-21	Return air pipe fixed clamp	SPCC10	1	
16	SIC-57W-R2-A-08	Front middle beam	SPCC3.0	1	
15	SIC-57W-R2-A-06	Control box	SPCC15	1	
14	SIC-57W-R2-A-03	Front middle beam	SPCC2.0	1	
13	SIC-57W-R2-A-10	Top frame	SPCC2.0	1	
12	SIC-57W-R2-A-ALL-01	Bottom frame assembly	assembly	1	
11	SIC-57W-R2-B-07	Water tank	SPCC2.0	1	
10	SIC-57W-R2-A-20	Filter fixed block	SPCC2.0	1	
9	YW03000300000	3" PP black wheel	SPCC2.0	2	
8	SIC-57W-R2-A-02	Left front column	SPCC2.0	1	
7	SIC-33A-R2-A-36	Triangle plate 2	SPCC2.0	4	borrow
6	SIC-57W-R2-A-05	Right rear column	SPCC2.0	1	
5	SIC-57W-R2-A-18	Plate exchange fixed frame	SPCC3.0	2	
4	YW03000300200	3" PP black movable wheel	assembly	2	
3	SIC-33A-R2-A-35	Triangle plate 1	SPCC2.0	4	borrow
2	SIC-57W-R2-A-04	Right rear column	SPCC2.0	1	
1	SIC-57W-R2-A-21	Inlet and outlet water pipe fixed beam	SPCC3.0	1	
No.	Material number	Name	Mat.	Num	Remark

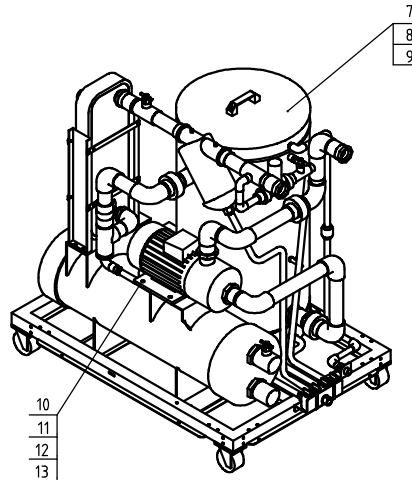
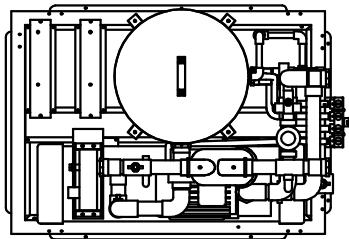
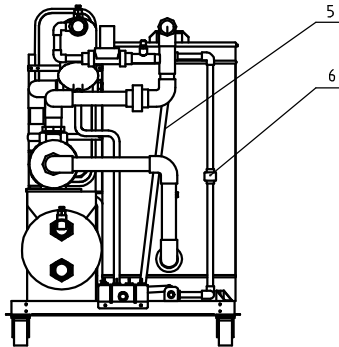
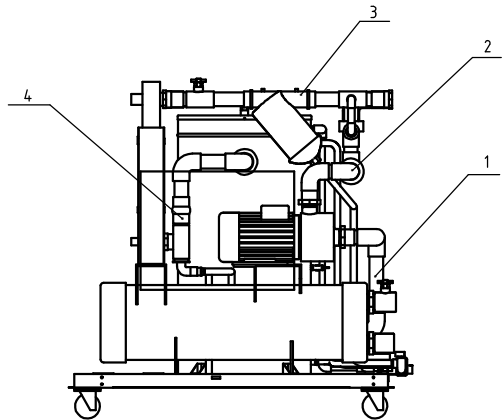
Tech. Req:
1.Lock up the sheet metals tightly with fastening screws according to standard torque.

制图	版号	A	标题	SIC-57W-R2	图号	SIC-57W-R2-A-ALL	
设计	核准		机架组合				
校对	日期	20190301	SHINI 智易電能機械股份有限公司 Shanghai Easy Power Technologies, Inc.		比例	1:17	
标记	更改前	更改后	更改人	日期	20190301	数量	1
						表面要求	
						物料号	

SHINI 智易電能機械股份有限公司
Shanghai Easy Power Technologies, Inc.

比例 1:17 数量 1
材質 組合件
表面要求
物料号

版本号
A

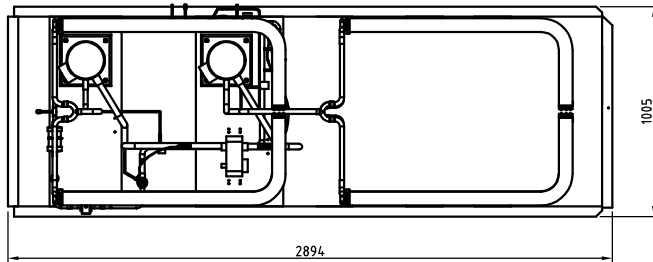
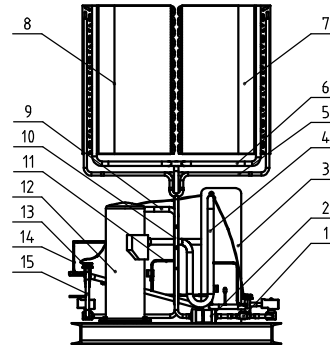
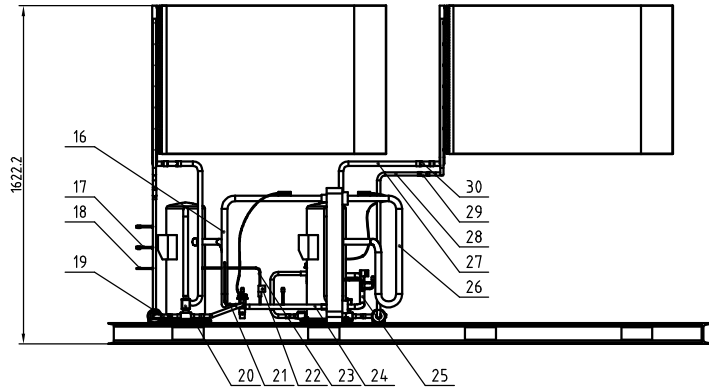


Tech. Req:

- 1.The thread connector must be sealed with material tape;
- 2.Use special glue to connect the PVC-U water pipe, and
3. No water leakage within 0.7Mpa pressure;
3. No water supply is allowed 24 hours after assembly;

13	YW66061300000	Flat washer A grade GB/T97.1 8	14.0HV	8	
12	YW65006000100	Standard spring washer GB/T93 8	65Mn	8	
11	YW64080600000	Hex. nut GB/T6170 M8	5.0	8	
10	YW60082500100	Hex. bolt M8x25-12.9	4.8	8	
9	BW20012000040	Alu. square handle	assembly	1	
8	SIC-33A-R2-B-08	Water tank cover	SUS201	1	borrow
7	SIC-57W-R2-B-07	Water tank	assembly	1	
6	SIC-57W-R2-B-02	Refill water pipe assembly	assembly	1	
5	YR60051000000	Steel wire hose 1/2"		2M	
4	SIC-57W-R2-B-03	Evaporator outlet pipe assembly	assembly	1	
3	SIC-57W-R2-B-02	Return water pipe assembly	assembly	1	
2	SIC-57W-R2-B-05	Outlet water pipe assembly	assembly	1	
1	SIC-57W-R2-B-04	Water pump suction pipe assembly	assembly	1	
No.	Material number	Name	Mat.	Num.	Remarks

					制图	谢浩斌	版本号	A	标题	SIC-57W-R2	图号	SIC-57W-R2-B-ALL	比例	1:15	数量	1
					设计	谢浩斌	核准		水系统		SIC-57W-R2-B-ALL		表面要求		材质	组合件
					校对				SHINI 信昌塑料机械股份有限公司 Shini Plastics Technologies, Inc.		表面要求		物料号			
标记	更改前	更改后	更改人	日期	审核		日期	20190301								



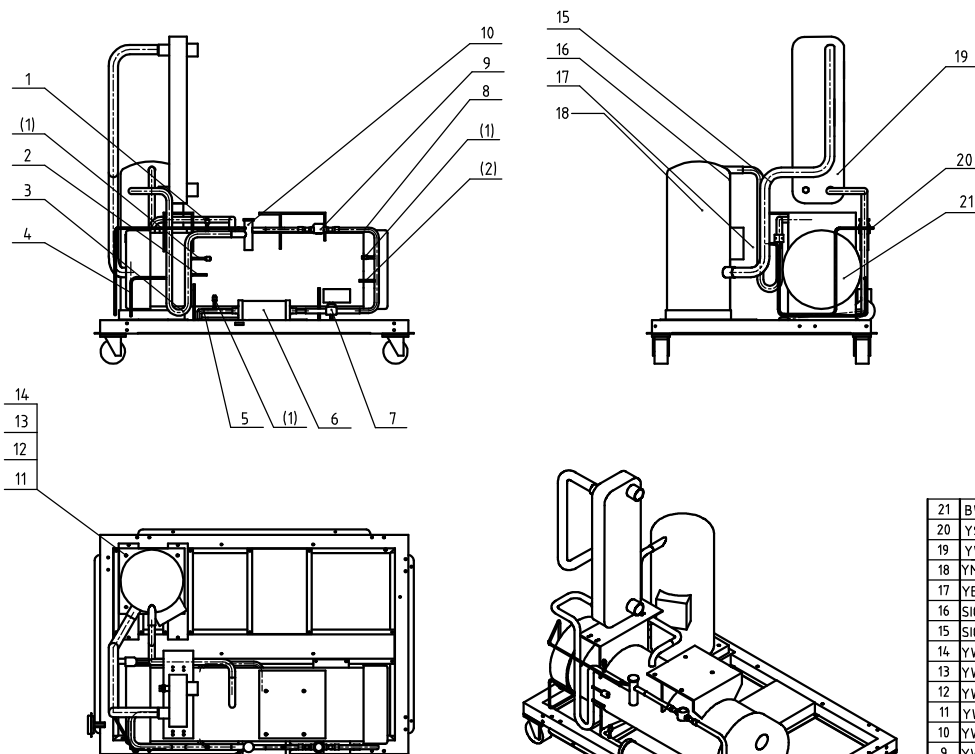
- Tech. Req:
- 1.H's recommended to contain at least 20% silver in the welding rod during copper and stainless steel welding, contain 5% silver in the welding rod during copper and copper welding. All parts shall be installed firmly and perfectly. When using low phosphorus welding rod, higher welding technologies shall be required;
 - 2.During welding, it should have anti-oxidation protection. After welding, there shall be no ash and foreign matters in the pipeline and the welding parts shall be smooth;
 - 3.After the assembly, fill the refrigerant system with 3.2Mpa nitrogen to maintain the pressure, and the pressure gauge reading doesn't change within 10 hours.
 - 4.The surface of copper pipe and evaporator in low temp. zone shall be covered with insulation cotton.
 - 5.The thermocoupler head must have insulation treatment;

30	YW05000700800	Y type three way 5"	assembly	2	
29	YW05000500900	Y type three way 7"	assembly	2	
28	SIC-66A-R2-C-14	Rear filter inlet liquid pipe	TP2M	1	
27	SIC-66A-R2-C-11	Rear compressor exhaust pipe	TP2M	1	
26	SIC-66A-R2-C-12	Rear compressor return air pipe	TP2M	1	
25	SIC-66A-R2-C-15	Rear expansion valve outlet liquid pipe	TP2M	1	
24	SIC-66A-R2-C-07	Front expansion valve outlet liquid pipe	TP2M	1	
23	SIC-66A-R2-C-10	Front compressor bypass pipe	TP2M	1	
22	YE320004.01100	Bypass solenoid valve FDF-4A	assembly	2	
21	SIC-66A-R2-C-09	Front compressor equalizer pipe	TP2M	1	
20	YE32070500000	Solenoid valve 200RD715T	assembly	2	
19	SIC-66A-R2-C-07	Front expansion valve inlet liquid pipe	TP2M	1	
18	YS30063500000	φ6 copper pipe	assembly	2	
17	YW850104.00300	Liquid injection needle valve Z	assembly	4	
16	SIC-66A-R2-C-03	Front compressor return air pipe	TP2M	1	
15	SIC-66A-R2-C-14	Rear expansion valve inlet liquid pipe	assembly	1	
14	SIC-66A-R2-C-16	Rear compressor equalizer pipe	TP2M	1	
13	YW85712500000	Expansion valve BAE 7	TP2M	2	
12	YM70018200000	Compressor 2P12KCE-TFD	assembly	2	
11	SIC-66A-R2-C-17	Rear compressor bypass pipe	TP2M	1	
10	SIC-66A-R2-C-06	Front filter inlet liquid pipe	TP2M	1	
9	SIC-66A-R2-C-02	Front compressor exhaust pipe	TP2M	1	
8	SIC-33A-R2-C-02	Left fin style condenser	TP2M	2	borrow
7	SIC-33A-R2-C-03	Right fin style condenser	TP2M	2	borrow
6	SIC-66A-R2-C-04	Condenser inlet pipe	TP2M	4	
5	SIC-66A-R2-C-05	Condenser outlet pipe	TP2M	4	
4	SIC-66A-R2-C-03	Front compressor return air pipe	TP2M	1	
3	SIC-66A-R2-C-01	Plate exchanger HBL 95B	assembly	1	
2	YW85016500100	Drying filter EK165S	assembly	2	
1	YW85001500100	Liquid level indicatorHLE-1T5C	assembly	1	

No.	Material number	Name	Mat.	Num.	Remarks
	SIC-66A-R2	图号		比例 1:20	数量 1
	冷媒系统	SIC-66A-R2-C-ALL		⊕ 材质	组合件
				表面要求	
				物料号	

标记	更改前	更改后	更改人	日期	制图	版号	A	标题	SIC-66A-R2	图号	SIC-66A-R2-C-ALL	比例	1:20	数量	1
					设计	核准		冷媒系统							
					校对										
					审核										
							日期	20211028							





Tech. Req:

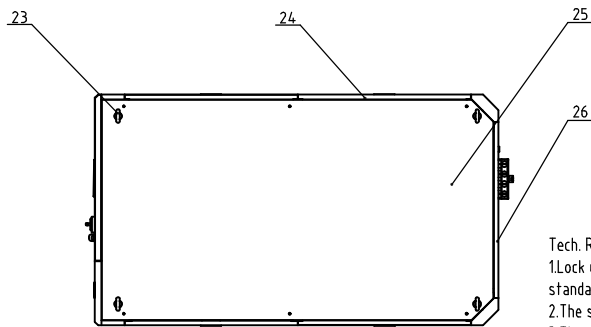
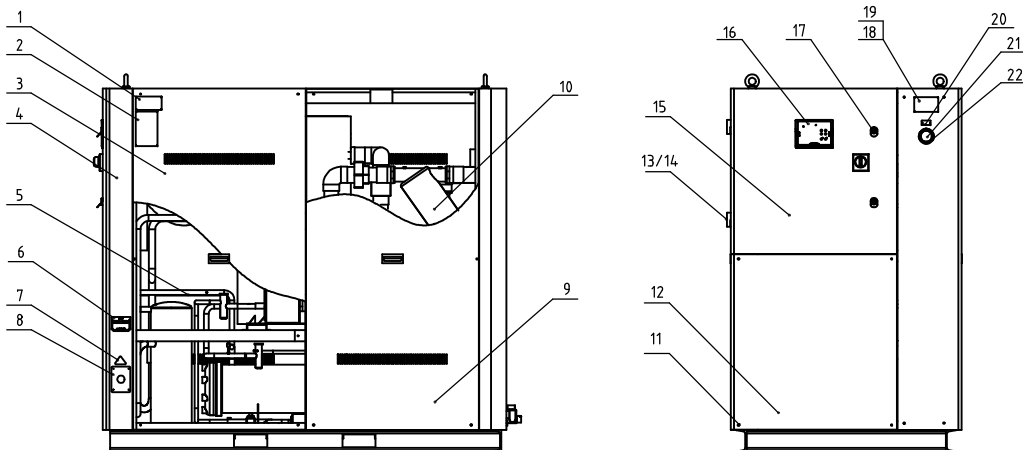
- 1.If's recommended to contain at least 20% silver in the welding rod during copper and stainless steel welding, contain 5% silver in the welding rod during copper and copper welding. All parts shall be installed firmly and perfectly. When using low phosphorus welding rod, higher welding technologies shall be required;
- 2.During welding, it should have anti-oxidation protection. After welding, there shall be no ash and foreign matters in the pipeline and the welding ports shall be smooth;
- 3.After the assembly, fill the refrigerant system with 3.2Mpa nitrogen to maintain the pressure, and the pressure gauge reading doesn't change within 10 hours.
- 4.The surface of copper pipe and evaporator in low temp. zone shall be covered with insulation cotton.
- 5.The thermocoupler head must have insulation treatment;

21	BW86005300010	Condenser SIC-57W-R2-C-02	assembly	1	
20	YS30063500000	Equalizing pipe	assembly	1	
19	YW87560100000	Plate exchange SIC-57W-R2-C-01	assembly	1	
18	YM70018200000	Compressor ZP182KCE-TFD	assembly	1	
17	YE90062402100	Hot gas bypass valve PDB-8A	assembly	1	
16	SIC-57W-R2-C-03	Exhaust air pipe	TP2M	1	
15	SIC-57W-R2-C-04	Return air pipe	TP2M	1	
14	YW66061300000	Flat washer A grade GB/T971.8-Longzine	14.0HV	16	
13	YW650066000100	Standard spring washer GB/T93 8-Longzine	65Mn	16	
12	YW640806000000	Hex. nut GB/T6170 M8-Longzine	5.0	16	
11	YW60084000100	Hex. bolt M8×4.0-12.9-Longzine	4.8	16	
10	YW851658000000	Expansion valve TFES 16-ZAA 5/8-7/8	assembly	1	
9	YW85001500100	Liquid level indicator HMI-11T5	assembly	1	option
8	SIC-57W-R2-C-06	Filter liquid outlet pipe	assembly	1	
7	YE90207506800	Liquid pipe solenoid valve	TP2M	1	option
6	YW85030500100	Drying filter EK3055	assembly	1	
5	SIC-57W-R2-C-05	Condenser liquid outlet pipe	TP2M	1	
4	YS300635000000	Bypass valve inlet air pipe	TP2M	1	
3	SIC-57W-R2-C-07	Evaporator inlet pipe	TP2M	1	
2	YS300635000000	Quick connector pipe	TP2M	1	
1	YW850104003000	Liquid injection needle valve	assembly	4	
No.	Material number	Name	Mat.	Num.	Remarks

制图	版号	B	标题	SIC-57W-R2	图号	SIC-57W-R2-C-ALL	比例	1:15	数量	1
设计	核		标题	冷煤系统			表面要求		材质	组合件
校对	准						物料号			
标记	更改前	更改后	更改人	日期	审核	日期	20190808			

SHINI 新思电气机械股份有限公司
Shini Electric Machinery Co., Ltd.

Cooling capacity (rated temperature: 78 evaporation/40 condensation)	Cooling capacity (water temperature: 30/35)	Cooling capacity (water temperature: 30/35)	Total power (middle/high pressure)	Cooling water inlet (inch)	Cooling water outlet (inch)	Chilled water inlet (inch)	Chilled water outlet (inch)	Drain port (inch)	Water tank refill port (inch)	Cooling water flow (L/min)	Chilled water flow (L/min)	Water tank capacity (L)	Weight (kg)	Ver.
62kw	69kw	76kw	15.98/16.58kw	Rc2	Rc2	Rc2	Rc2	Rc1/2	Rc1/2	272.3	217.9	180	720	A

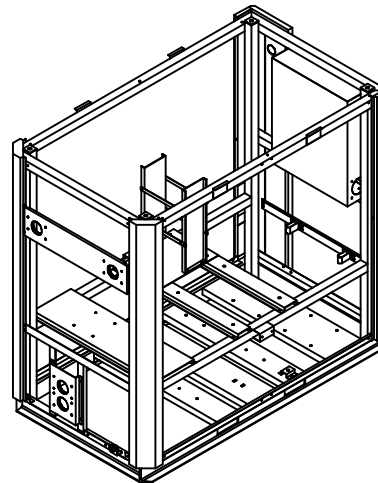
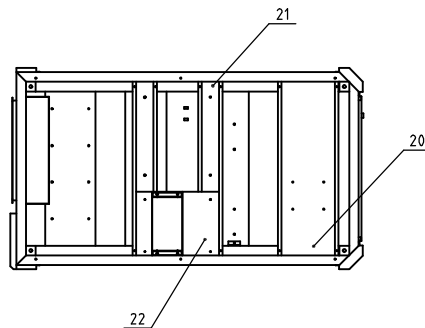
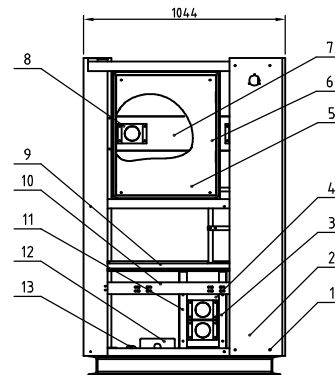
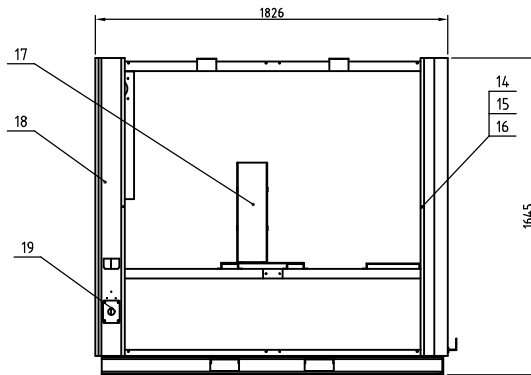


Tech. Req:
 1.Lock up the components tightly with fastening screws according to standard torque.
 2.The surface must without flaking paint and scratches;
 3.The panel is easy to disassemble, without interference and stuck.

No.	Material number	Name	Mat.	Num	Remarks
26	SIC-76W-R2-ALL-06	Rear plate	SPCC1.5	1	
25	SIC-76W-R2-ALL-07	Top plate	SPCC1.5	1	
24	SIC-76W-R2-ALL-05	Side plate 2	SPCC1.5	1	
23	YW09001600000	Hanging screw GB/T825 M16	Structure parts	4	
22	YP30425000000	Pump pressure gauge	Assembly	1	
21	YW63030600000	Large cross recessed pan head screw M3x6	4.8	3	
20	YP30425000000	Pump pressure label	2024	1	
19	YP30108680000	Nameplate	Assembly	1	
18	YW69020500000	Rivet 2x5□	4.8	21	
17	YW00816100000	Door lock	SPCC1.5	2	
16	YE80317501900	Water chiller controller	Assembly	1	
15	SIC-76W-R2-ALL-01	Front upper door plank	SPCC1.5	1	
14	YW62051000100	Large cross recessed pan head screw M5x10	4.8	8	
13	YW06203100400	Large chain (L263-Bieff)	Structure parts	2	
12	SIC-76W-R2-ALL-02	Front lower door plank	SPCC1.5	1	
11	YW62063500000	Large cross recessed pan head screw M6x25	4.8	26	
10	SIC-76W-R2-B-ALL	Water system	Assembly	1	
9	SIC-76W-R2-ALL-04	Side plate 1	SPCC1.5	2	
8	BL02010000020	Wire clamp fixed plate M32	SPCC1.5	1	
7	YP31051650000	Triangle power 3 phase 400V	Structure parts	1	
6	YR4.00485000000	Shell RS-485	Assembly	1	
5	SIC-76W-R2-C-ALL	Refrigerant system	Assembly	1	
4	SIC-76W-R2-A-ALL	Rack assembly	Assembly	1	
3	SIC-76W-R2-ALL-03	Side plate	SPCC1.5	1	
2	YP31018600000	Notice label (English & Chinese)	Structure parts	1	
1	YP31115800400	Water chiller main & repair kit label	Structure parts	1	

制图	版号	A	标题	SIC-76W-R2	图号	SIC-76W-R2-ALL	比例	1:18	数量	1	备注
设计	核准		标题	总装图			表面要求				物料号
校对	审核		标记	更改前	更改后	更改人	日期	日期			





22	SIC-76W-R2-A-13	Evaporator support plate	SPCC3.0	1	
21	SIC-76W-R2-A-12	Water tank support beam	SPCC3.0	2	
20	SIC-76W-R2-A-11	Water pump support beam	SPCC3.0	1	
19	BL02010000020	Wire clamp fixed plate	4.8	1	
18	SIC-76W-R2-A-ALL-01	Rack welding drawing assembly		1	
17	SIC-76W-R2-A-15	Plate exchange fixed frame	SPCC3.0	2	
16	YW66061300000	Flat washer A grade 6	4.8	20	
15	YW65006000100	Standard spring washer 6	4.8	20	
14	YW60062000100	Hex. bolt M6x20	4.8	20	
13	SIC-98A-R2-A-28	Refill water pipe fixed plate	assembly	1	borrow
12	SIC-33A-R2-A-38	Water separator support plate	SPCC2.0	1	borrow
11	SIC-76W-R2-A-19	Condenser water pipe fixed beam 2	SPCC2.0	1	
10	SIC-76W-R2-A-24	Exhaust pipe fixed beam	SPCC3.0	1	
9	SIC-76W-R2-A-20	Condenser water pipe fixed beam 3	SPCC2.0	1	
8	SIC-76W-R2-A-22	Water pipe fixed clamp plate	SPCC2.0	4	
7	SIC-76W-R2-A-23	Evaporator inlet and outlet water pipe fixed beam	SPCC3.0	1	
6	SIC-76W-R2-A-07	Control box	SPCC1.5	1	
5	SIC-76W-R2-A-08	Electrical bottom plate	SPCC1.5	1	
4	SIC-76W-R2-A-17	Condenser water pipe fixed plate 2	SPCC2.0	1	
3	SIC-76W-R2-A-18	Condenser water pipe fixed plate 1	SPCC3.0	2	
2	SIC-76W-R2-A-01	Meter plate	SPCC1.5	1	
1	YW62063500000	Large flat head screw M6x35	4.8	4	
No.	Material number	Name	Mat.	Num.	Remark

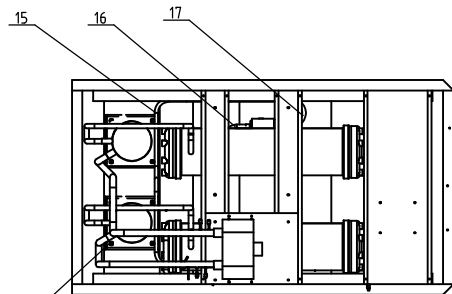
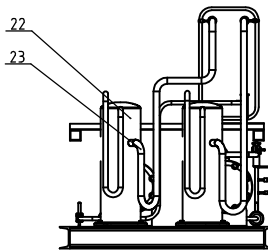
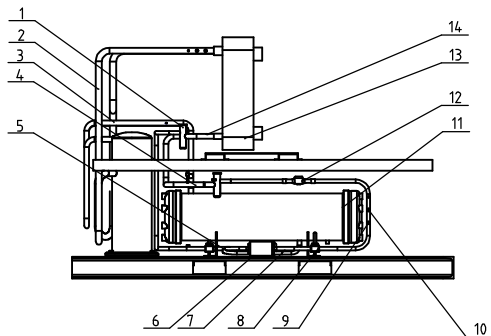
Tech. Req:

- 1.Lock up the components tightly with fastening screws according to standard torque.
- 2.The surface must without flaking paint and scratches;
- 3.The panel is easy to disassemble, without interference and stuck.

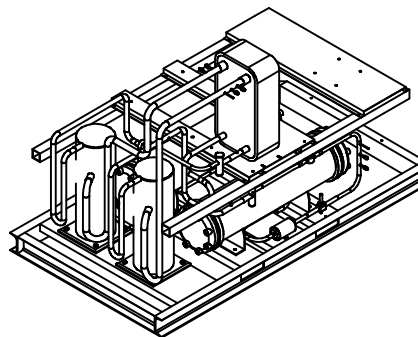
					制图	谢浩斌	版号	A	标题	SIC-76W-R2	图号	SIC-76W-R2-A-ALL
					设计	王文卓	核		机架组合			
					校对		准					
标记	更改前	更改后	更改人	日期	审核		日期	20210625				

SHINI 信义机械股份有限公司
Shini Pumps & Valves, Inc.

比例	1:20	数量	1
表面要求	RA7016	材质	组合件
物料号			



18
19
20
21



Tech. Req:

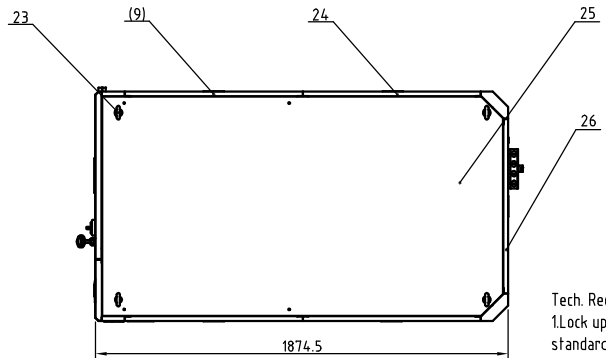
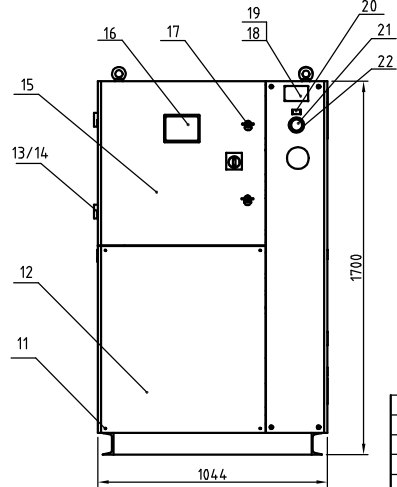
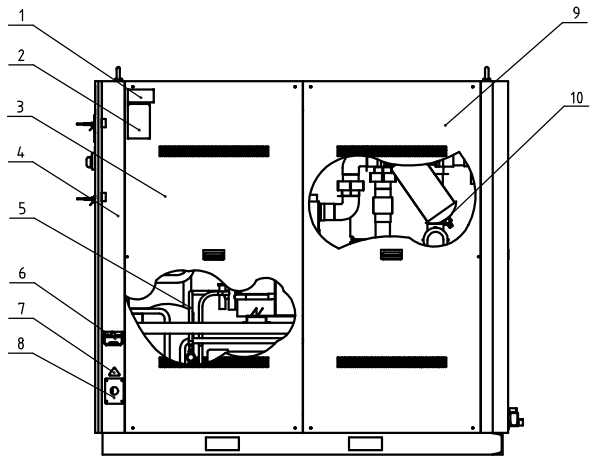
- 1.It's recommended to contain at least 20% silver in the welding rod during copper and stainless steel welding, contain 5% silver in the welding rod during copper and copper welding. All parts shall be installed firmly and perfectly. When using low phosphorus welding rod, higher welding technologies shall be required;
- 2.During welding, it should have anti-oxidation protection. After welding, there shall be no ash and foreign matters in the pipeline and the welding ports shall be smooth;
- 3.After the assembly, fill the refrigerant system with 3.2Mpa nitrogen to maintain the pressure, and the pressure gauge reading doesn't change within 10 hours.
- 4.The surface of copper pipe and evaporator in low temp. zone shall be covered with insulation cotton.
- 5.The thermocoupler head must have insulation treatment;

23	SIC-76W-R2-C-03	Return air pipe 2	TP2M	1	
22	YM70018200000	Gu Lun compressor ZP182KCE-TFD	assembly	2	
21	YW66061300000	Flat washer A grade GB/T191 8-Longzine	14,0HV	20	
20	YW65006000100	Standard spring washer GB/T193 8-Longzine	65Mn	20	
19	YW64080600000	Hex. nut GB/T6170 M8-Longzine	5.0	20	
18	YW60084000100	Hex. bolt M8-4.8-Q235-Longzine	4, 8	20	
17	SIC-78W-R2-C-08	Filter liquid outlet pipe 2	assembly	2	
16	SIC-78W-R2-C-07	Condenser liquid outlet pipe 2	TP2M	1	
15	SIC-76W-R2-C-09	Filter liquid outlet pipe 3	TP2M	1	
14	SIC-76W-R2-C-10	Expansion valve outlet air pipe 2	TP2M	1	
13	YW87011406000	Plate evaporator SIC-114W-R2-C-01	assembly	1	
12	YW85030500100	Liquid level indicator HMI-11T5	assembly	2	
11	YW86007600000	Condenser SIC-76W-R2-C-02	assembly	2	
10	YW85010400300	Liquid injection needle valve	assembly	8	
9	YS30063500000	Quick connector pipe	assembly	6	
8	YE90207506800	Liquid pipe solenoid valve 200RD7T5T	assembly	2	
7	SIC-78W-R2-C-05	Filter liquid outlet pipe 1	TP2M	1	
6	YW85016500100	Drying filter EK 165S	assembly	2	
5	SIC-78W-R2-C-04	Condenser liquid outlet pipe 1	assembly	1	
4	SIC-76W-R2-C-06	Expansion valve outlet air pipe 1	TP2M	1	
3	SIC-76W-R2-C-01	Exhaust air pipe 1	TP2M	2	
2	SIC-76W-R2-C-02	Return air pipe 1	TP2M	1	
1	YW85712500000	Expansion valve S/8X7/80DF5/T	assembly	2	
No.	Material number	Name	Mat.	Num	Remarks

制图	版号	A	标题	SIC-76W-R2	图号	SIC-76W-R2-C-ALL	比例	1:18	数量	1
设计	核			冷媒系统						
校对	准									
审核	日期	20210625	标记	更改前	更改后	更改人	日期	表面要求	物料号	

SHINI 信昌机械股份有限公司
SHINI Mechanical Equipment Co., Ltd.

Order Quantity Unit: 1000/10000/100000	Order Quantity Unit: 1000/10000/100000	Order Quantity Unit: 1000/10000/100000	Total power (kW)/High pressure	Cooling water inlet (inch)	Cooling water outlet (inch)	Chilled water inlet (inch)	Chilled water outlet (inch)	Drain port (inch)	Water tank refill port (inch)	Cooling water flow (L/min)	Chilled water flow (L/min)	Water tank capacity (L)	Weight (kg)	Ver.
91/100	100/116	114/132	24.3/24.7kw	Rc2	Rc2	Rc2	Rc2	Rc1/2	Rc1/2	408.5	326.8	180	720	A

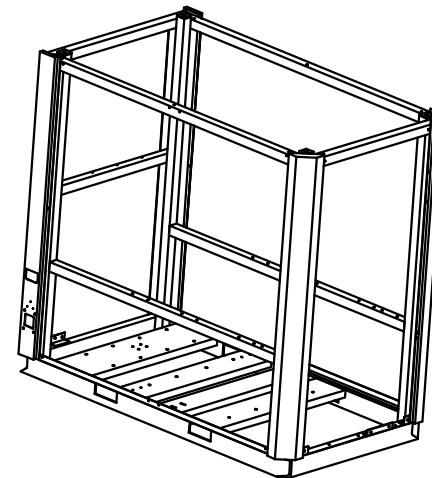
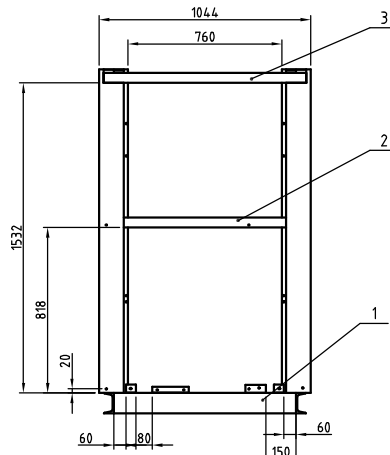
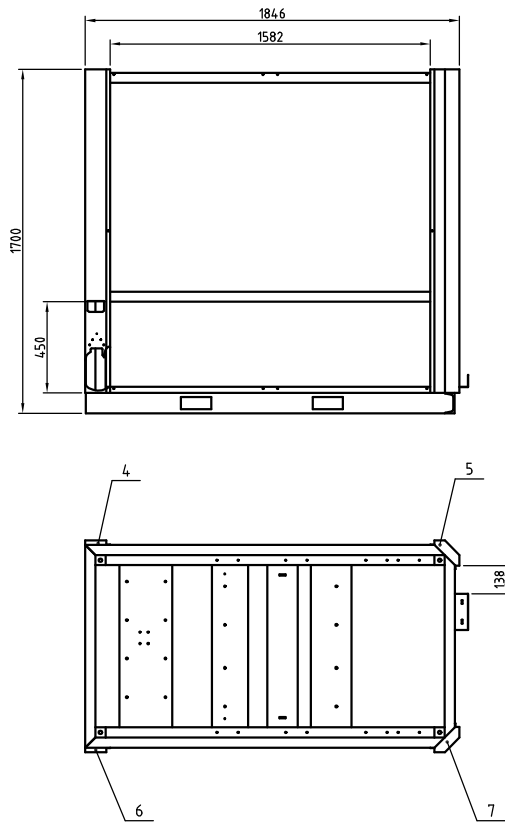


Tech. Req:
 1.Lock up the components tightly with fastening screws according to standard torque.
 2.The surface must without flaking paint and scratches;
 3.The panel is easy to disassemble, without interference and stuck.

26	SIC-114W-R2-ALL-05	Rear plate	SPCC1.5	1	
25	SIC-114W-R2-ALL-06	Top plate	SPCC1.5	1	
24	SIC-114W-R2-ALL-07	Side plate 3	SPCC1.5	1	
23	YW09001600000	Hanging screw GB/T825 M16	Structure parts	4	
22	YP30425000000	Pump pressure gauge	Assembly	1	
21	YW63030600000	Large cross recessed pan head screw M20x5	4.8	3	
20	YP30425000000	Pump pressure label	2024	1	
19	YP30108680000	Maneplate	Assembly	1	
18	YW69020500000	Rivet 2x5	4.8	21	
17	YW00816100000	Door lock	SPCC1.5	2	
16	YE80317501900	Water chiller controller	Assembly	1	
15	SIC-114W-R2-ALL-01	Front upper door plank	SPCC1.5	1	
14	YW62051000100	Large cross recessed pan head screw M8x17	4.8	12	
13	YW06203100400	Large chain (L263-16x17)	Structure parts	2	
12	SIC-114W-R2-ALL-02	Front lower door plank	SPCC1.5	1	
11	YW62063500000	Large cross recessed pan head screw M6x26	4.8	26	
10	SIC-114W-R2-B-ALL	Water system	Assembly	1	
9	SIC-114W-R2-ALL-03	Side plate 1	SPCC1.5	2	
8	BL02010000020	Wire clamp fixed plate M32	SPCC1.5	1	
7	YP31051650000	Triangle power 3 phase 400V	Structure parts	1	
6	YR40048500000	Shell RS-485	Assembly	1	
5	SIC-114W-R2-C-ALL	Refrigerant system	Assembly	1	
4	SIC-114W-R2-A-ALL	Rack assembly	Assembly	1	
3	SIC-114W-R2-ALL-04	Side plate 2	SPCC1.5	1	
2	YP31018600000	Notice label (English & Chinese)	Structure parts	1	
1	YP31115800400	Water chiller main & repair kit label	Structure parts	1	
No.	Material number	Name	Mat	Num	Remarks

制图	版号	A	标题	SIC-114W-R2	图号	SIC-114W-R2-ALL	比例	1:10	数量	1
设计	核		总装图				表面要求			
校对	准						物料号			
标记	更改前	更改后	更改人	日期	审核	日期				





7	SIC-114W-R2-A-05	Right rear column	SPCC2.0	1	
6	SIC-114W-R2-A-03	Right front column	SPCC2.0	1	
5	SIC-114W-R2-A-04	Left rear column	SPCC2.0	1	
4	SIC-114W-R2-A-02	Left front column	SPCC2.0	1	
3	SIC-114W-R2-A-14	Rack top layer	assembly	1	
2	SIC-114W-R2-A-10	Rack middle layer	assembly	1	
1	SIC-114W-R2-A-09	Rack bottom layer	assembly	1	
No.	Material number	Name	Mat.	Num.	Remark

Tech. Req:

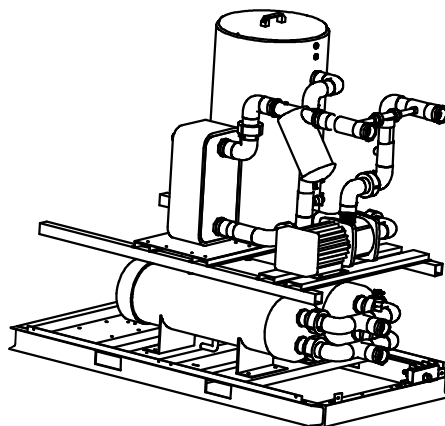
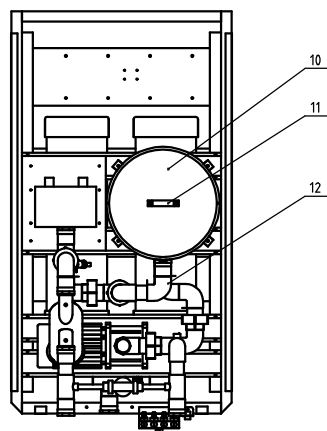
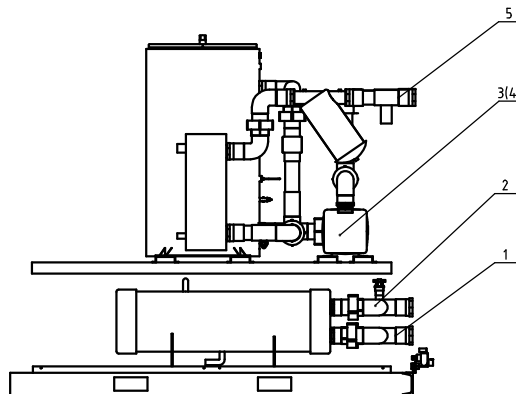
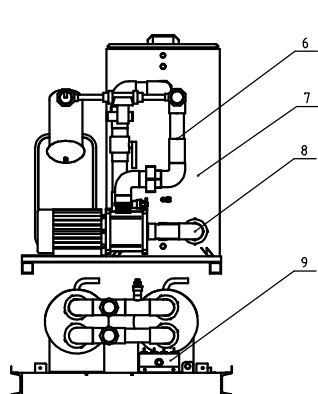
1. Remove burrs and blunt edges;
2. Unmarked dimension tolerance shall meet the GB/T1804-m standard;
3. All sheet metals shall be welded firmly;

制图	版号	A	标题	SIC-114W-R2	图号	SIC-114W-R2-A-ALL-01
设计	核		机架焊接图		比例	1:20
校对	准				数量	1
审核	日期	20210625			表面要求	RA7016
标记	更改前	更改后	更改人	日期	物料号	



比例	1:20	数量	1
表面要求	RA7016	物料号	

版本号
A

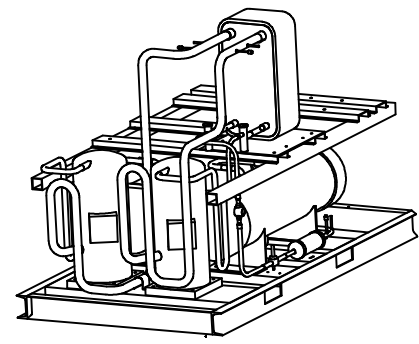
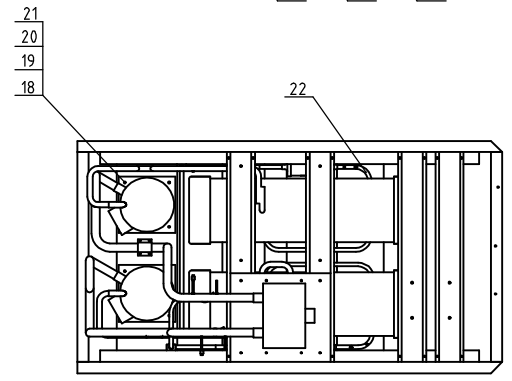
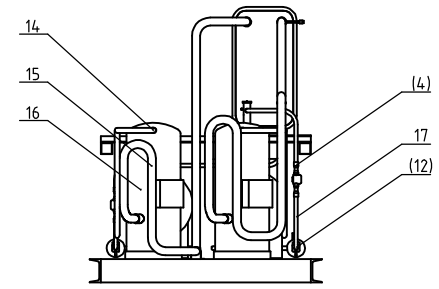
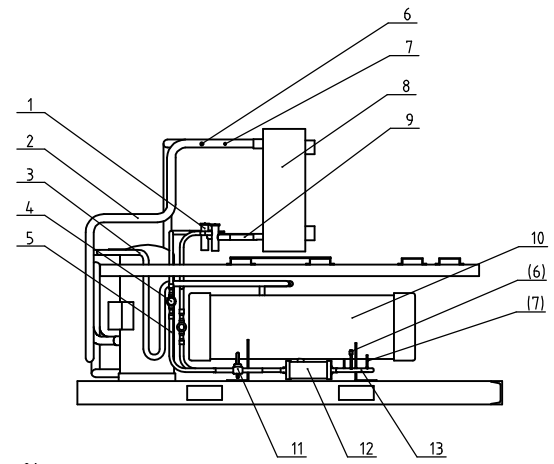


Tech. Req:
 1.The thread connector must be sealed with material tape;
 2.Use special glue to connect the PVC-U water pipe, and
 3. No water leakage within 0.7Mpa pressure;
 3. No water supply is allowed 24 hours after assembly;

16	YW66061300000	Flat washer A grade GB/T91.18	14.0HV	8	
15	YW65006000100	Standard spring washer GB/T93.8	65Mn	8	
14	YW64080600000	Hex. nut GB/T6170 M8	5.0	8	
13	YW60082500100	Hex. bolt M8-25-12.9	4.8	8	
12	SIC-114W-R2-B-03	Plate exchange inlet pipe assembly	assembly	1	
11	BW20012000040	Alu. square handle	assembly	1	
10	SIC-33A-R2-B-08	Water tank cover	SUS201	1	borrow
9	YW50001200300	Four-in-one ball water collector 1/2"	assembly	1	
8	SIC-114W-R2-B-04	Water pump suction pipe assembly	assembly	1	
7	SIC-114W-R2-B-08	Water tank	assembly	1	
6	SIC-114W-R2-B-05	Water pump outlet pipe assembly	assembly	1	
5	SIC-114W-R2-B-03	Plate exchange inlet water pipe assembly	assembly	1	
4	YM20204000200	Water pump CHM20-4	assembly	1	option
3	YM20203000200	Water pump CHM20-3	assembly	1	
2	SIC-114W-R2-B-07	Condenser outlet water pipe assembly	assembly	1	
1	SIC-114W-R2-B-06	Condenser inlet water pipe assembly	assembly	1	
No.	Material number	Name	Mat.	Num.	Remarks

制图	版号	A	标题	SIC-114W-R2	图号	SIC-114W-R2-B-ALL	比例	1:18	数量	1
设计	核		水系统				材	质	组	合
校对	准						表	面	要	求
标记	更改前	更改后	更改人	日期	审核	日期	物料号			
						20210625				

SHINI 伯邑電機機械股份有限公司
 SHINI Electric Machinery Co., Ltd.



Tech. Req:
 1.H₂S recommended to contain at least 20% silver in the welding rod during copper and stainless steel welding, contain 5% silver in the welding rod during copper and copper welding. All parts shall be installed firmly and perfectly. When using low phosphorus welding rod, higher welding technologies shall be required;
 2.During welding, it should have anti-oxidation protection. After welding, there shall be no ash and foreign matters in the pipeline and the welding ports shall be smooth;
 3.After the assembly, fill the refrigerant system with 3.2Mpa nitrogen to maintain the pressure, and the pressure gauge reading doesn't change within 10 hours.
 4.The surface of copper pipe and evaporator in low temp. zone shall be covered with insulation cotton.
 5.The thermocoupler head must have insulation treatment;

22	SIC-114W-R2-C-10	Condensor liquid outlet pipe 2	TP2M	1	
21	YW66061300000	Flat washer A grade GB/T97.18-Longzine	14.0HV	20	
20	YW65006000100	Standard spring washer GB/T93 8-Longzine	65Mn	20	
19	YW64.080600000	Hex. nut GB/T6170 M8-Longzine	5.0	20	
18	YW60084.000100	Hex. bolt M8x4.0-12.9-Longzine	4.8	20	
17	SIC-114W-R2-C-011	Filter liquid outlet pipe 2	TP2M	1	
16	YM70018200000	Compressor ZP182KCE-TFD	assembly	2	
15	SIC-114W-R2-C-08	Return air pipe 2	TP2M	1	
14	SIC-114W-R2-C-09	Exhaust air pipe 2	TP2M	1	
13	SIC-114W-R2-C-05	Condensor liquid outlet pipe 1	TP2M	1	
12	YW85030500100	Drying filter EK305S	assembly	2	
11	YW85001500100	Liquid pipe solenoid valve	assembly	2	
10	SIC-114W-R2-C-02	Condensor SIC-114W-R2-C-01	assembly	1	
9	SIC-114W-R2-C-07	Evaporator liquid inlet pipe 1	assembly	2	
8	YW87660900000	Plate evaporator SIC-114W-R2-C-01	TP2M	1	
7	YS30063500000	Quick connector pipe	TP2M	8	
6	YW850104.00300	Liquid injection needle valve	assembly	4	
5	SIC-114W-R2-C-06	Filter liquid outlet pipe 1	assembly	1	
4	YW85030500100	Liquid level indicator HMI-1T5	assembly	2	
3	SIC-114W-R2-C-04	Exhaust air pipe 1	TP2M	1	
2	SIC-114W-R2-C-03	Return air pipe 1	TP2M	1	
1	YW85165800000	Expansion valve TFES 16-ZAA 5/8x7/8	TP2M	2	
No.	Material number	Name	Mat.	Num.	Remarks

					制图 谢浩斌	版号 A	标题 SIC-114W-R2	图号 SIC-114W-R2-C-ALL	比例 1:18	数量 1	
					设计 谢浩斌	核 准	冷媒系统		数量	1	
(A1)	无	新增版本机型	谢浩斌	20220622	校对				表面要求	材质	组合件
标记	更改前	更改后	更改人	日期	审核	日期	20210625	SHINI 信易霖斯机械股份有限公司 Shini Piston Technology, Inc.	物料号		