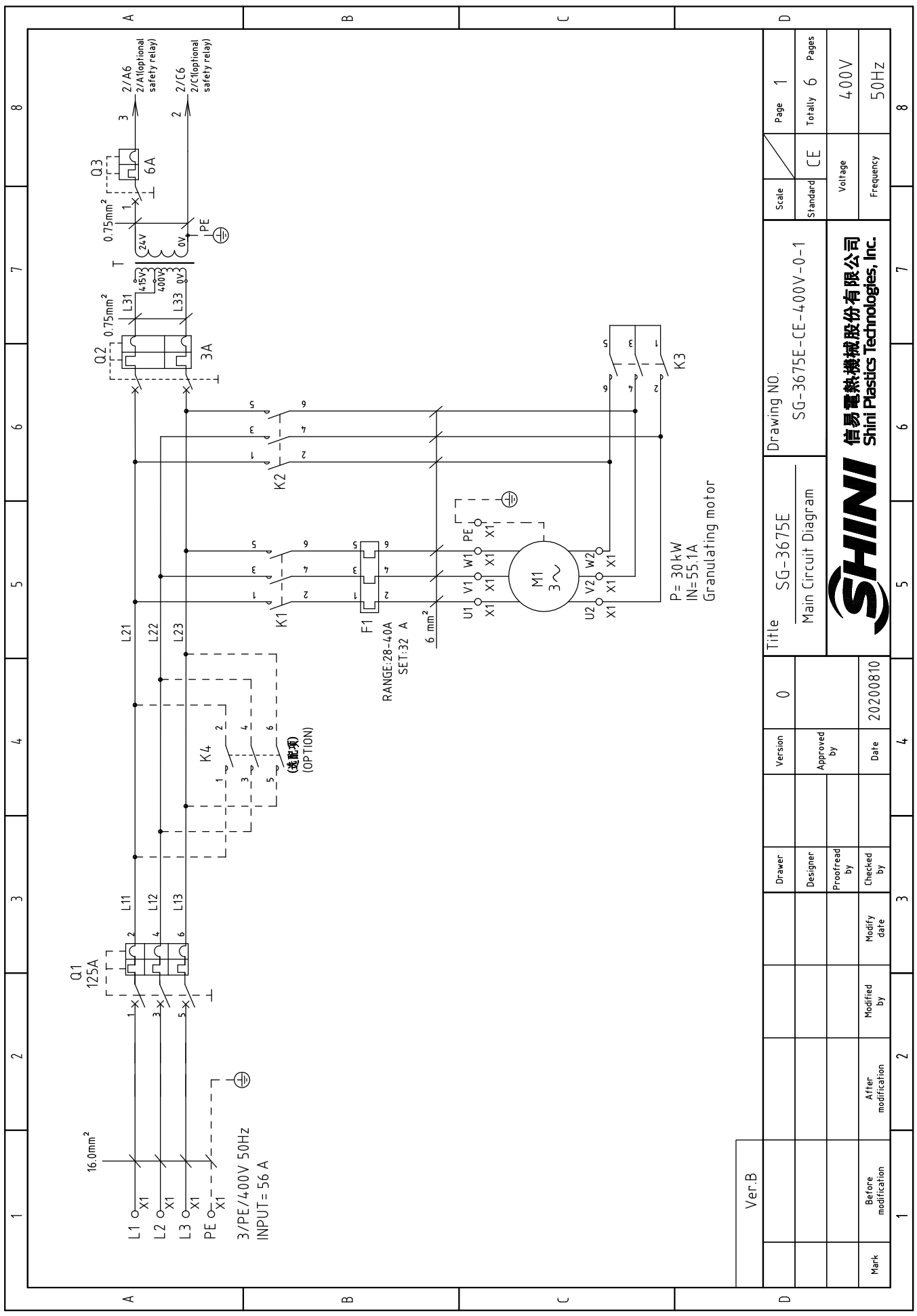


Ver.B	Title		Drawing NO.		Scale		Page		
	SG-3650E		SG-3650E-CE-400V-0-1		Standard		CE		
Main Circuit Diagram		Version		0		Totally		6	
Approved by		Date		20200810		Voltage		400V	
Checked by		Date		20200810		Frequency		50Hz	
Modified by		Date				Voltage		400V	
After modification		Date				Frequency		50Hz	
Before modification		Date				Voltage		400V	
Mark		Date				Frequency		50Hz	

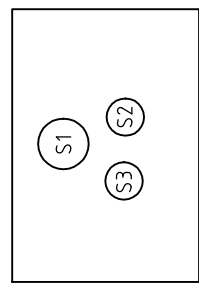
SHINI
 信易電熱機械股份有限公司
 Shini Plastics Technologies, Inc.

1		2		3		4		5		6		7		8	
NO.	Symbol	Name	Manufacturer	Type	Specification	Number	Material number	Remark							
26	S3,H1	Start button (with light)	SCHNEIDER	XBZBW33MIC	24VAC	1	YE11233100000	(1)							
27		Contact block	SCHNEIDER	ZB2BE101C	1N0	1	YE00210103100	(1)(3)							
28	H3	Buzzer	TEND	EA-2	24VAC	1	YE84240200000	(1)(2)							
29	S4,S5	Safety switch	SCHMERSRC	AZ15-02ZVRK-1476	AZ-15	2	YE16147600100	(1)							
30	S4,S5	Safety switch	SCHMERSRC	AZ16-02ZVRK-1476	AZ-16	2	YE16147600000	(1)(3)							
31		Operation parts AZ17-B6	-----	-----	AZ-17	2	YE16176000000	(1)							
32	MS	Material level switch	SIPAI	SR-80	24VAC	1	YE15802400100	(1)(2)							
33	X10	Metal connector	APEX	PLT-254-PM	4P	1	YE68025400000	(1)(2)							
34			APEX	PLT-254-RF	4P	1	YE68025400100	(1)(2)							
35	M1	Granulating motor	-----	18.5kW	400V 50Hz	1	-----	(1)							
B															
C															
D															
Ver.B Notes: (1)Means it's not the material inside the control box. (2)Means optional accessories of full-receive alarm device. (3)Stand for optional safety relay.															
		Title		Drawing NO.		Scale		Page							
		SG-3650E		SG-3650E		CE		6							
		Electrical Components List 2		SG-3650E-CE-400V-0-6		CE		Totally 6							
		Date		20200810		Voltage		400V							
		Checked by				Frequency		50Hz							
Mark		Before modification		Modified by		Modify date		2		3		4		8	

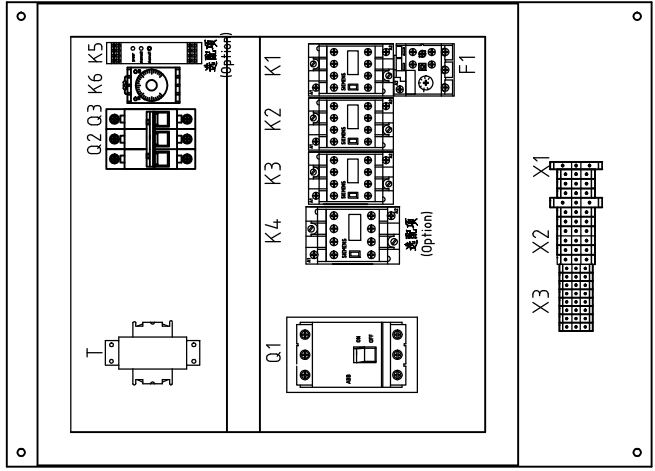




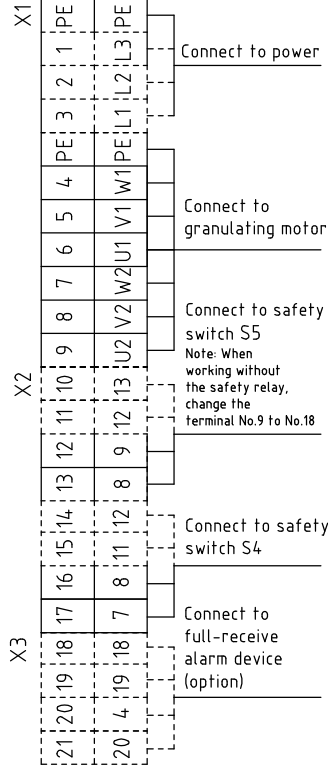
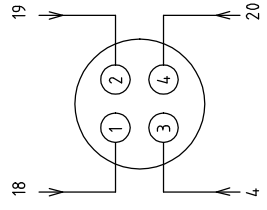
Ver.B	Title		Drawing NO.		Scale		Page		
	SG-3675E		SG-3675E-CE-400V-0-1		Standard		CE		
Main Circuit Diagram		Version		Approved by		Totally		Pages	
0						6		6	
Mark		Before modification		Modified by		Voltage		400V	
1		2		3		Frequency		50Hz	
2		3		4		Voltage		400V	
3		4		5		Frequency		50Hz	
4		5		6		Voltage		400V	
5		6		7		Frequency		50Hz	
6		7		8		Voltage		400V	
7		8		9		Frequency		50Hz	
8		9		10		Voltage		400V	
9		10		11		Frequency		50Hz	
10		11		12		Voltage		400V	
11		12		13		Frequency		50Hz	
12		13		14		Voltage		400V	
13		14		15		Frequency		50Hz	
14		15		16		Voltage		400V	
15		16		17		Frequency		50Hz	
16		17		18		Voltage		400V	
17		18		19		Frequency		50Hz	
18		19		20		Voltage		400V	
19		20		21		Frequency		50Hz	
20		21		22		Voltage		400V	
21		22		23		Frequency		50Hz	
22		23		24		Voltage		400V	
23		24		25		Frequency		50Hz	
24		25		26		Voltage		400V	
25		26		27		Frequency		50Hz	
26		27		28		Voltage		400V	
27		28		29		Frequency		50Hz	
28		29		30		Voltage		400V	
29		30		31		Frequency		50Hz	
30		31		32		Voltage		400V	
31		32		33		Frequency		50Hz	
32		33		34		Voltage		400V	
33		34		35		Frequency		50Hz	
34		35		36		Voltage		400V	
35		36		37		Frequency		50Hz	
36		37		38		Voltage		400V	
37		38		39		Frequency		50Hz	
38		39		40		Voltage		400V	
39		40		41		Frequency		50Hz	
40		41		42		Voltage		400V	
41		42		43		Frequency		50Hz	
42		43		44		Voltage		400V	
43		44		45		Frequency		50Hz	
44		45		46		Voltage		400V	
45		46		47		Frequency		50Hz	
46		47		48		Voltage		400V	
47		48		49		Frequency		50Hz	
48		49		50		Voltage		400V	
49		50		51		Frequency		50Hz	
50		51		52		Voltage		400V	
51		52		53		Frequency		50Hz	
52		53		54		Voltage		400V	
53		54		55		Frequency		50Hz	
54		55		56		Voltage		400V	
55		56		57		Frequency		50Hz	
56		57		58		Voltage		400V	
57		58		59		Frequency		50Hz	
58		59		60		Voltage		400V	
59		60		61		Frequency		50Hz	
60		61		62		Voltage		400V	
61		62		63		Frequency		50Hz	
62		63		64		Voltage		400V	
63		64		65		Frequency		50Hz	
64		65		66		Voltage		400V	
65		66		67		Frequency		50Hz	
66		67		68		Voltage		400V	
67		68		69		Frequency		50Hz	
68		69		70		Voltage		400V	
69		70		71		Frequency		50Hz	
70		71		72		Voltage		400V	
71		72		73		Frequency		50Hz	
72		73		74		Voltage		400V	
73		74		75		Frequency		50Hz	
74		75		76		Voltage		400V	
75		76		77		Frequency		50Hz	
76		77		78		Voltage		400V	
77		78		79		Frequency		50Hz	
78		79		80		Voltage		400V	
79		80		81		Frequency		50Hz	
80		81		82		Voltage		400V	
81		82		83		Frequency		50Hz	
82		83		84		Voltage		400V	
83		84		85		Frequency		50Hz	
84		85		86		Voltage		400V	
85		86		87		Frequency		50Hz	
86		87		88		Voltage		400V	
87		88		89		Frequency		50Hz	
88		89		90		Voltage		400V	
89		90		91		Frequency		50Hz	
90		91		92		Voltage		400V	
91		92		93		Frequency		50Hz	
92		93		94		Voltage		400V	
93		94		95		Frequency		50Hz	
94		95		96		Voltage		400V	
95		96		97		Frequency		50Hz	
96		97		98		Voltage		400V	
97		98		99		Frequency		50Hz	
98		99		100		Voltage		400V	
99		100		101		Frequency		50Hz	
100		101		102		Voltage		400V	
101		102		103		Frequency		50Hz	
102		103		104		Voltage		400V	
103		104		105		Frequency		50Hz	
104		105		106		Voltage		400V	
105		106		107		Frequency		50Hz	
106		107		108		Voltage		400V	
107		108		109		Frequency		50Hz	
108		109		110		Voltage		400V	
109		110		111		Frequency		50Hz	
110		111		112		Voltage		400V	
111		112		113		Frequency		50Hz	
112		113		114		Voltage		400V	
113		114		115		Frequency		50Hz	
114		115		116		Voltage		400V	
115		116		117		Frequency		50Hz	
116		117		118		Voltage		400V	
117		118		119		Frequency		50Hz	
118		119		120		Voltage		400V	
119		120		121		Frequency		50Hz	
120		121		122		Voltage		400V	
121		122		123		Frequency		50Hz	
122		123		124		Voltage		400V	
123		124		125		Frequency		50Hz	
124		125		126		Voltage		400V	
125		126		127		Frequency		50Hz	
126		127		128		Voltage		400V	
127		128		129		Frequency		50Hz	
128		129		130		Voltage		400V	
129		130		131		Frequency		50Hz	
130		131		132		Voltage		400V	
131		132		133		Frequency		50Hz	
132		133		134		Voltage		400V	
133		134		135		Frequency		50Hz	
134		135		136		Voltage		400V	
135		136		137		Frequency		50Hz	
136		137		138		Voltage		400V	
137		138		139		Frequency		50Hz	
138		139		140		Voltage		400V	
139		140		141		Frequency		50Hz	
140		141		142		Voltage		400V	
141		142		143		Frequency		50Hz	
142		143		144		Voltage		400V	
143		144		145		Frequency		50Hz	
144		145		146		Voltage		400V	
145		146		147		Frequency		50Hz	
146		147		148		Voltage		400V	
147		148		149		Frequency		50Hz	
148		149		150		Voltage		400V	
149		150		151		Frequency		50Hz	
150		151		152		Voltage		400V	
151		152		153		Frequency		50Hz	
152		153		154		Voltage		400V	
153		154		155		Frequency		50Hz	
154		155		156		Voltage		400V	
155		156		157		Frequency		50Hz	
156		157		158		Voltage		400V	
157		158		159		Frequency		50Hz	
158		159		160		Voltage		400V	
159		160		161		Frequency		50Hz	
160		161		162		Voltage		400V	
161		162		163		Frequency		50Hz	
162		163		164		Voltage		400V	
163		164		165		Frequency		50Hz	
164		165		166		Voltage		400V	
165		166		167		Frequency		50Hz	
166		167		168		Voltage		400V	
167		168		169		Frequency		50Hz	
168		169		170		Voltage		400V	
169		170		171		Frequency		50Hz	
170		171		172		Voltage		400V	
171		172		173		Frequency		50Hz	
172		173		174		Voltage		400V	
173		174		175		Frequency		50Hz	
174		175		176		Voltage		400V	
175		176		177		Frequency		50Hz	
176		177		178		Voltage		400V	
177		178		179		Frequency		50Hz	
178		179		180		Voltage		400V	
179		180		181		Frequency		50Hz	
180		181		182		Voltage		400V	
181		182		183		Frequency		50Hz	
182		183		184		Voltage		400V	
183		184		185		Frequency		50Hz	
184		185		186		Voltage		400V	



Panel



X10 Connection diagram of metal connectors (option)



Ver.B																			
-------	--	--	--	--	--	--	--	--	--	--	--	--	--	--	--	--	--	--	--

Mark	Before modification	Modified by	Modify date	Checked by	Date	Proofread by	Approved by	Version	0	Title	SG-3675E	Drawing NO.	SG-3675E-CE-400V-0-4	Scale	Standard	CE	Totally	6	Pages	
	After modification				20200810					Electrical Components Layout										

Page	4
Voltage	400V
Frequency	50Hz



1	2		3	4	5	6	7	8
NO.	Symbol	Name	Manufacturer	Type	Specification	Number	Material number	Remark
26	S2	Stop button	SCHNEIDER	XB2BA22C	400VAC	1	YE11222000000	(1)
27	S3,H1	Start button (with light)	SCHNEIDER	XB2BW33M1C	24VAC	1	YE112333100000	(1)
28	H3	Contact block	SCHNEIDER	ZB2BE101C	1NO	1	YE00210103100	(1)(3)
29	H3	Buzzer	TEND	EA-2	24VAC	1	YE84240200000	(1)(2)
30	S4,S5	Safety switch	SCHMERSRC	AZ15-02ZVRK-1476	AZ-15	2	YE16147600100	(1)
31	S4,S5	Safety switch	SCHMERSRC	AZ16-02ZVRK-1476	AZ-16	2	YE16147600000	(1)(3)
32		Operation parts AZ17-B6	-----	-----	AZ-17	2	YE16176000000	(1)
33	MS	Material level switch	SIPAI	SR-80	24VAC	1	YE15802400100	(1)(2)
34	X10	Metal connector	APEX	PLT-254-PM	4P	1	YE68025400000	(1)(2)
35			APEX	PLT-254-RF	4P	1	YE68025400100	(1)(2)
36	M1	Granulating motor	-----	30kW	400V 50Hz	1	-----	(1)
A								
B								
C								
D								
Ver.B Notes: (1)Means it's not the material inside the control box. (2)Means optional accessories of full-receive alarm device. (3)Stand for optional safety relay.								
Title SG-3675E			Drawing NO. SG-3675E-CE-400V-0-6			Scale		Page 6
Electrical Components List 2			Version 0			Standard CE		Totally 6 Pages
SHINI			Date 20200810			Voltage 400V		Frequency 50Hz
信易電熱機械股份有限公司			20200810			400V		50Hz
Shini Plastics Technologies, Inc.			4			6		8
1	2	3	4	5	6	7	8	