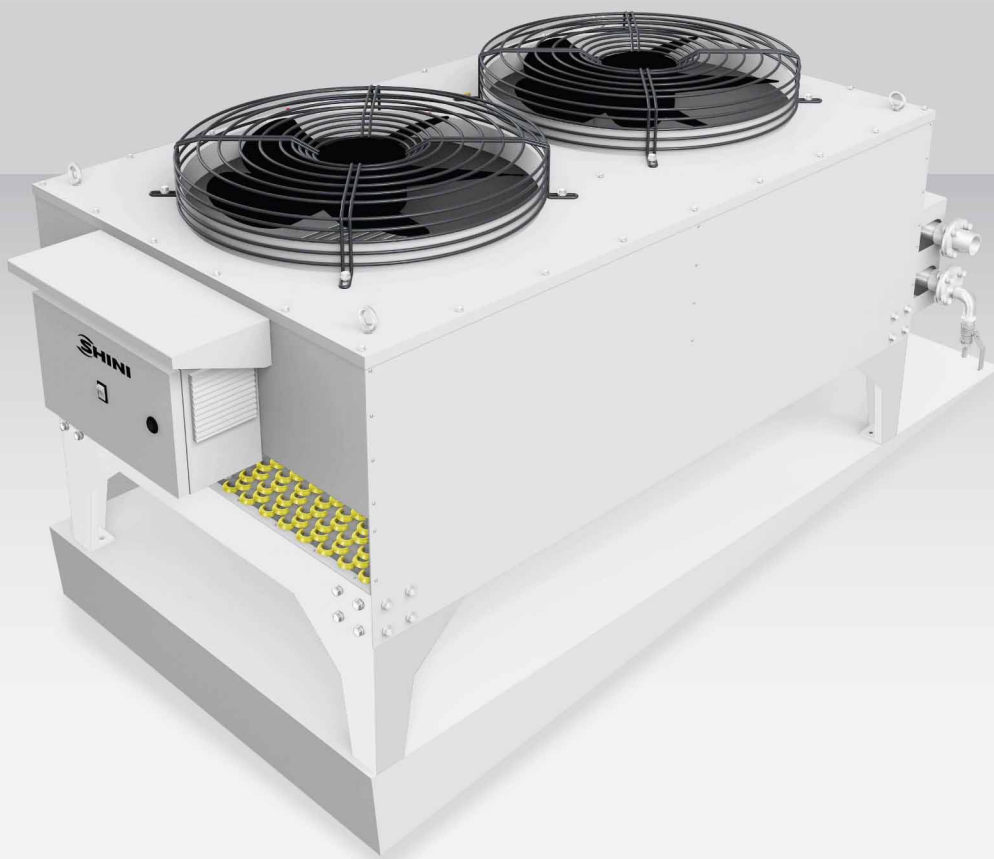




Dry Hermetic Cooling Tower

SDC-35A

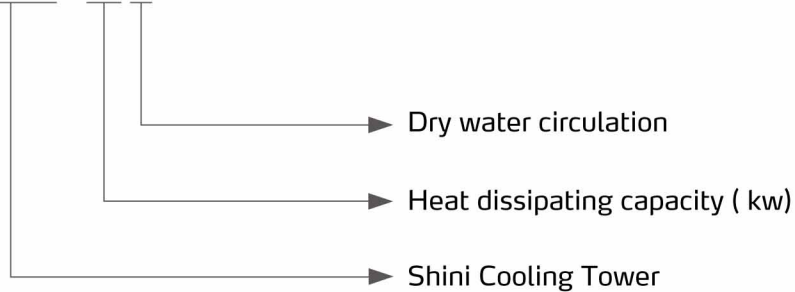


Refer carefully to this manual before operation.

SDC-A Series

■ Coding Principle

SDC - xx A



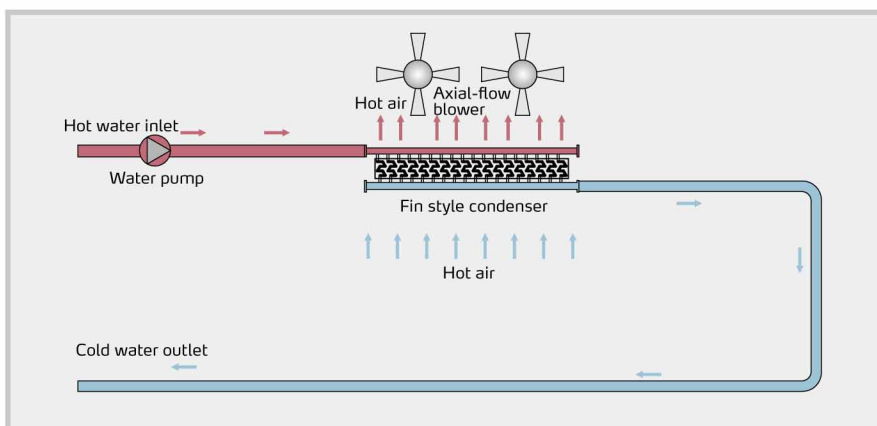
■ Features

- Modular design and easy capacity expansion help to reduce the impact of failure maintenance;
- Easy installation: small modular volume, convenient transportation, which only needs to connect the power supply and water pipe to put into operation.
- Economic energy saving: take ambient air as the cooling medium without the compressor to save the cost, and the whole water loop adopts hermetic circulation with little water consumption that greatly saves the resource.

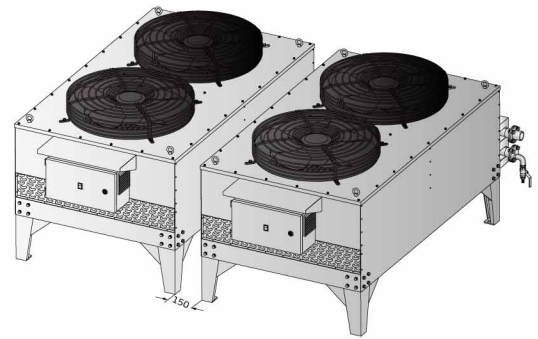
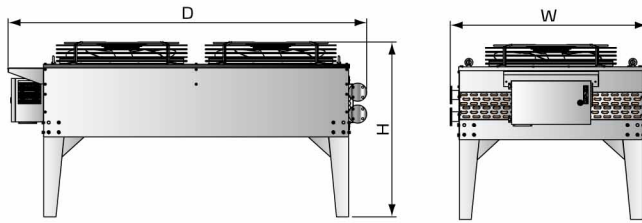
■ Applicable Scope

As the clean cooling water is available, it's widely used in the industries with high demands of the cooling water quality, such as the electronic, food, chemical, casting, air conditioner and refrigeration industries. It's able to be applied for mould cooling to reduce the product's molding cycle, which also can be used for equipment cooling to ensure that the equipment is maintained at normal temperature, or other working areas which need cooling.

■ Working Principle



Outline Drawings



Combination diagram

Specification

Machine Model		SDC-35A
Cooling Capacity	kW	35
Blower	n	2
Blower power	kW	2.64
Air quantity	m ³ /h	13000
Max. current	A	5.0
Rated water flow rate	m ³ /h	10
W	mm	995
D	mm	1811.5
H	mm	880
Water pipe connection mode		flange
Pipe dimension	DN	40

Grouping	Model	Type
Module combination	SDC-70A	2×35A
	SDC-105A	3×35A
	SDC-140A	4×35A
	SDC-175A	5×35A
	SDC-210A	6×35A

Notes: 1) Above data is based on the power 400V/3 ϕ /50Hz, the machine should be installed horizontally and the working environment should be marked in the user manual.

2) Dry conditions: the ambient air dry ball temp. is 27°C. The process inlet water temp. is 37°C, and outlet water temp. is 32°C.

Shini Group

Addr: No. 23, Minhe St., Shulin Dist.,
New Taipei, Taiwan

Tel: +886 2 2680 9119

Fax: +886 2 2680 9229

Email: shini@shini.com

Factories:

- Taiwan
- Dongguan
- Pinghu
- Ningbo
- Chongqing
- Pune

2022-06-15-04 Copyrights Reserved.

www.shini.com