



## Integrated Temperature Controller

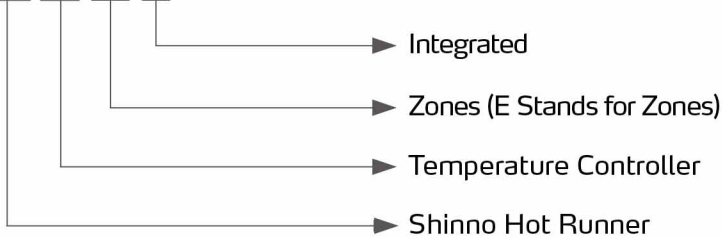
Simple Solution



# SHTC-EM Series

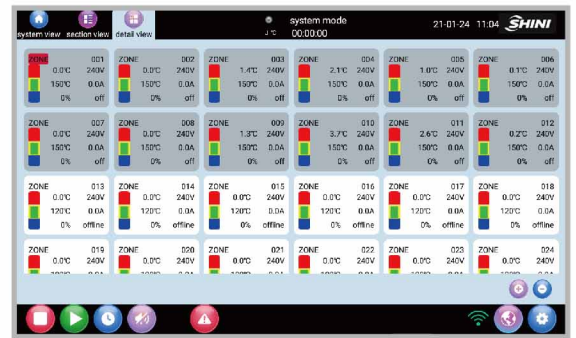
## Coding Principle

SH TC-xE M



## Features

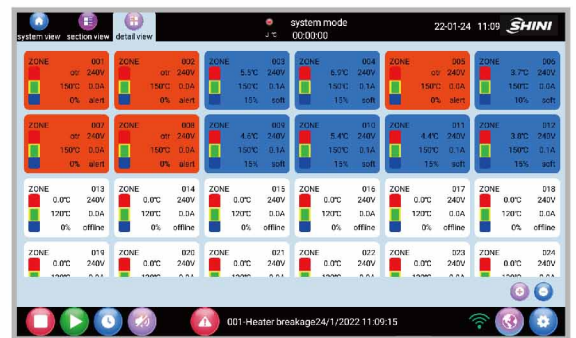
- Adopt German PMA multi-loop temp. control system for accurate temp. control.
- 10.1" color capacitive screen, featuring bright color and easy operation
- Multi-point touch control can zoom and display the temp. curve
- Current and output percentage display function
- Support history alarm display and record
- One button temp. setting function
- RS485 communication function



Operation Interface

## Product Profile

- Adopt FUZZY PIDD technology
- Auto linear compensation function for ambient temperature
- Detection for thermocouple break
- Detection for measuring loop break inside the controller
- Heater current monitoring
- Output interruption detection, output short circuit protection
- Temperature deviation alarm
- Manual power output mode
- Power 380V input protector with alarm indicator
- Full error code output



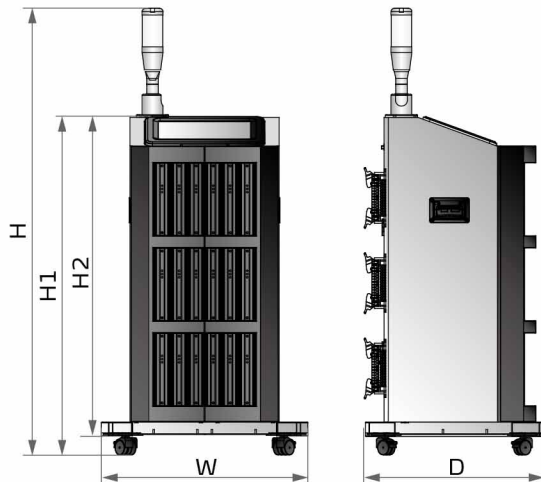
Alarm Interface

## ■ Application

SHTC-EM series of touch-panel temperature controller can control the temp. of 12 to 126 zones, and several of the units can be connected through the RS485 or Ethernet interface to achieve centralized monitoring function. It supports the setting of multiple groups' control at one time that simplifies the operation processes.

Besides, with additional and practical current detecting functions, the unit is especially suitable for automobile industry, PET preform injection molding, medical consumables and other applications to realize one-stop control, and bring more benefits to this industry.

## ■ Outline Drawings



## ■ Specifications

Model	SHTC-	12EM	24EM	36EM	48EM	60EM	72EM	90EM	108EM	126EM
Display Size (Inch)	10.1									
Dimension	H(mm)	665	870	1074	1279	1484	1689	1484	1689	1894
	W(mm)	496	496	496	496	496	496	619	619	619
	D(mm)	431	431	431	431	431	431	460	460	460
	H1(mm)	402	607	811	1016	1221	1426	1221	1426	1631
	H2(mm)	358	563	767	972	1177	1382	1177	1382	1587

We reserve the right to change specifications without prior notice.

## **Shini Group**

Shinzo Hot Runner Systems, Inc

Addr: 160Jinlang South Rd, Dalang, Dongguang

Tel: +86(0)769 8111 5788

Fax: +86(0)769 8111 5755

Email: [shini@shini.com](mailto:shini@shini.com)

2021-12-15-04 Copyrights Reserved.

[www.shini.com](http://www.shini.com)