

Screw Chiller Solution

User Manual

Date: May, 2018

Version: Ver.A (English)



Contents

1. General Description	5
2. Interface introduction.....	7
2.1 Flow Chart.....	7
2.2 Start Interface.....	8
2.3 User Setting Interface	9
2.4 Status Query Interface	10
2.5 Unit Alarm Information	11
3. Operation and Function Instruction.....	12
3.1 Clock Set (User Setting)	12
3.2 Time zone setting(user setting)	12
3.3 Temp. Set (User set)	12

1. General Description



Read this manual carefully before operation to prevent damage of the machine or personal injuries.



All service work should be carried out by a person with technical training or corresponding professional experience. The manual contains instructions for both handling and servicing.

Any modifications of the machine must be approved by SHINI in order to avoid personal injury and damage to machine. We shall not be liable for any damage caused by unauthorized change of the machine.

Our company provides excellent after-sales service. Should you have any problem during using the machine, please contact the company or the local vendor.

Headquarter and Taipei factory:

Tel: (886) 2 2680 9119

Shini Plastics Technologies (China), Inc:

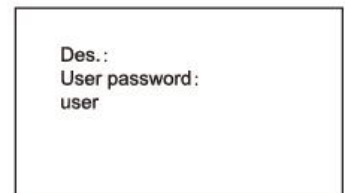
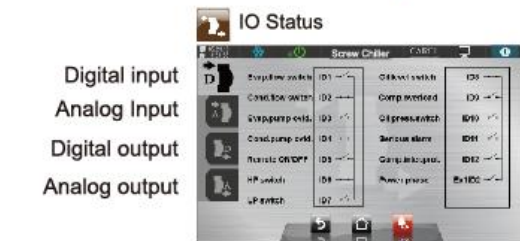
Tel: (86) 573 8522 5288

Shini Plastics Technologies India Pvt.Ltd.:

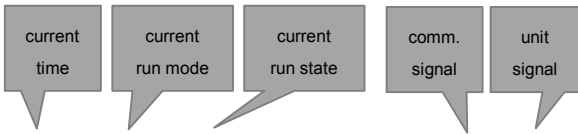
Tel: (91) 250 3021 166

2. Interface introduction

2.1 Flow Chart



2.2 Start Interface



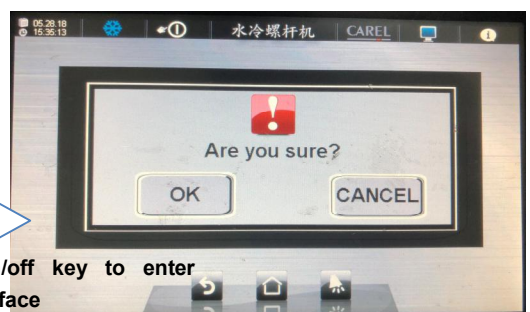
Click on/off button
Enter unit on/off interface



Click set point to enter
quick set interface



Click unit on/off key to enter
on/off set interface



After pressing the on key, the unit enters the on status and the air-conditioner pump runs. The unit will calculate the demand of compressor according to the inlet/outlet water temperature. The detailed parameter please refer to the unit control parameter.

Des.:

Unit current run state des.



Unit off



Anti-freeze run



Upper unit off



Alarm off



Time zone off



Unit on



Remote off

2.3 User Setting Interface



Click user set interface to enter password login interface

Password: user



After correct password input, press confirm key to enter user setting interface.

User Setting — — Clock



User Setting — — Time



User Setting — — Lan.



User Setting——Temp. set (single heat mode)



User Setting——Temp. set (heat pump mode)



User Setting——Password change



2.4 Status Query Interface

Status Inquiry

——Compress run status



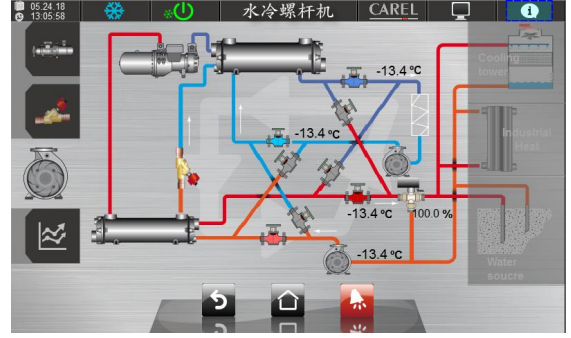
Status Inquiry——Elec. expan. val. run status



Status Inquiry—Elec. expan. val. run status



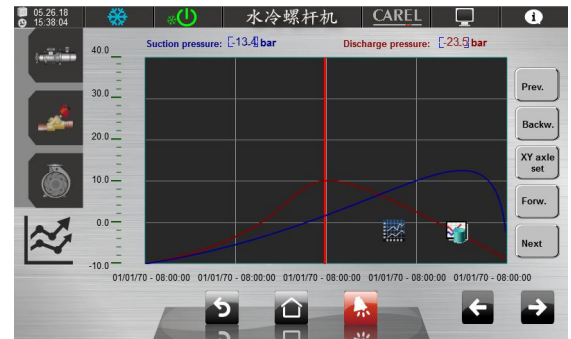
Status Inquiry—Water system run



Status Inquiry—Unit temp. hist. curve



Status Inquiry—Unit temp. hist. curve



2.5 Unit Alarm Information

Unit Alarm Info. — Real-time alarm



Unit Alarm Info.—History alarm



3. Operation and Function Instruction

3.1 Clock Set (User Setting)



Note:
The time will not be modified after enabling the payment service function!

3.2 Time zone setting(user setting)



Des.:

1. The time zone management adopts the week mode to process cycle control. Click the right choice box to determine how many work days in a week;
2. The time zone of daily work is consistent, and there are at most four time zones to control.

3.3 Temp. Set (User set)



Note:
There two methods to enter the temp. setting;

1. On the main screen, click the temp. set directly to enter;
2. Enter through temp. set in user settings to enter;

Description:

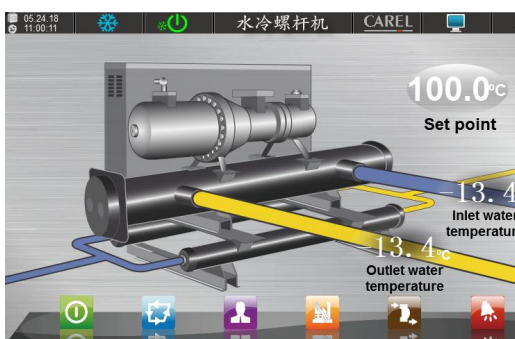
1. Please set the parameters under unit shutdown state!
2. When setting the parameter, it can adjust the parameter through “-” , “+” . For each time pressing, the adjustment range is 0.1℃ , or it can click the value point to modify the parameter! (As right fig.)
3. When parameter setting value exceeds the parameter setting limit, the parameter setting value will automatically adjust within the parameter setting limit
4. Parameter setting limit can be modified in the unit configuration of factory parameters! (As right fig.)



If the user wants to shield this function before interface information prompt:



Click password to login



Click the blank space shown in the dotted box to enter.

