

SPV-U

Proportional Valve

Date: Sep, 2018

Version: Ver.C



Content

1. General Description	5
1.1 Coding Principle	6
1.2 Feature	6
1.3 Technical Specifications	8
1.3.1 External Dimension	8
1.3.2 Specifications	8
1.4 Safety Regulations	9
1.4.1 Safety Signs and Labels	9
1.5 Exemption Clause	9
2. Structure Characteristics and Working Principle	10
2.1 Working Principle	10
3. Installation and Debugging	11
3.1 Working with SAL-U	11
4. Application and Operation	12
4.1 SAL-U(-E)、SAL-UG Function Instruction	12
4.1.1 Parameter Settings on SPV-U working with SAL-U(-E) and SAL-UG	12
4.1.2 Instruction Diagram about Connecting with "SAL-U (-E)"	12
4.1.3 Instruction Diagram about Connecting with SAL-UG	13
4.2 SPV-U with Independent Control Box	13
4.2.1 About the Control Panel	13
4.2.2 Start / Stop	14
4.2.3 Settings	14
4.2.4 Connections	17
5. Trouble-shooting	17
6. Maintenance and Repair	18
6.1 Maintenance	18
6.2 Maintenance Schedule	19
6.2.1 About the Machine	19

6.2.2 Check after Installation	19
7. Drawing and Parts List.....	20
7.1 Assembly Drawing	20
7.2 Parts List	21
8. Electrical Diagram	22

Table Index

Table 2-1: Specifications	8
Table 5-1: Working with SAL-U(-E)、SAL-UG parameter Settings	12

Picture Index

Picture 2-1: Proportional valve	8
Picture 2-2: Control box	8
Picture 3-1: Working principle illustration	10
Picture 4-1: Working with SAL-U.....	11
Picture 5-1: Instruction diagram about connecting with "SAL-U(-E)"	12
Picture 5-2: Instruction diagram about connecting with SAL-UG	13
Picture 5-3: About the control panel	13
Picture 5-4: Material loading diagram of hopper (single-layer working mode). 15	
Picture 5-5: Material loading diagram of hopper (double-layer working mode) 15	
Picture 5-6: Material loading diagram of hopper (three-layer working mode).. 16	
Picture 5-7: Material loading diagram of hopper (four-layer working mode).... 16	
Picture 5-8: Connections.....	17

1. General Description



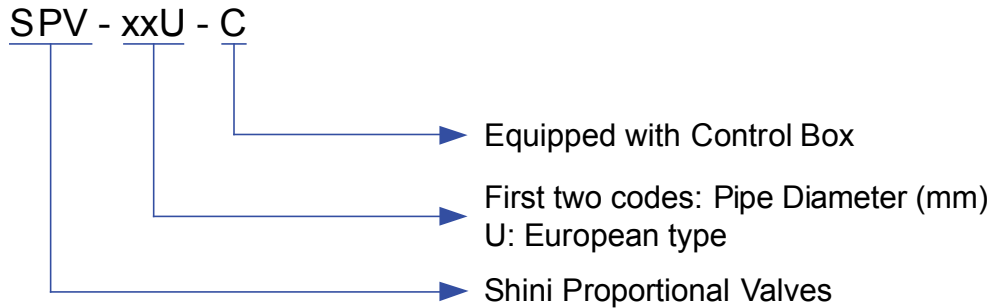
Read this manual carefully before operation to prevent damage of the machine or personal injuries.

SPV-U series proportional valve mix regrind and new materials in a proper proportion, and then send them back to the molding machine to achieve a proportional mixing and loading effect. It features directly mounted on loaders or mounted on the pipeline. Besides, it is applicable to Euro loaders and has to equip control box to perform when in other situations.



Model: SPV-38U-C

1.1 Coding Principle



1.2 Feature

1) Standard configuration

- European type design, classy appearance, easy installation and operation.
- Unique design of valve body, make material conveying more smoothly.
- The performance of solenoid valve is so stable that the air cylinder acts accurately to ensure a proportional mixing of new and regrind materials.
- There is no need of ordering control box when working with SAL-U series hopper loaders.
- Instant recycling of regrind materials to reduce production cost.
- Equipped with 1~4 levels working function selection, making material mixing more evenly.

2) Accessory option

- When applied in other conditions, control box can be an option.

All service work should be carried out by a person with technical training or corresponding professional experience. The manual contains instructions for both handling and servicing. Chapter 6, which contains service instructions intended for service engineers. Other chapters contain instructions for the daily operator.

Any modifications of the machine must be approved by SHINI in order to avoid personal injury and damage to machine. We shall not be liable for any damage caused by unauthorized change of the machine.

Our company provides excellent after-sales service. Should you have any problem during using the machine, please contact the company or the local vendor.

Headquarter and Taipei factory:

Tel: (886) 2 2680 9119

Shini Plastics Technologies (Dongguan), Inc:

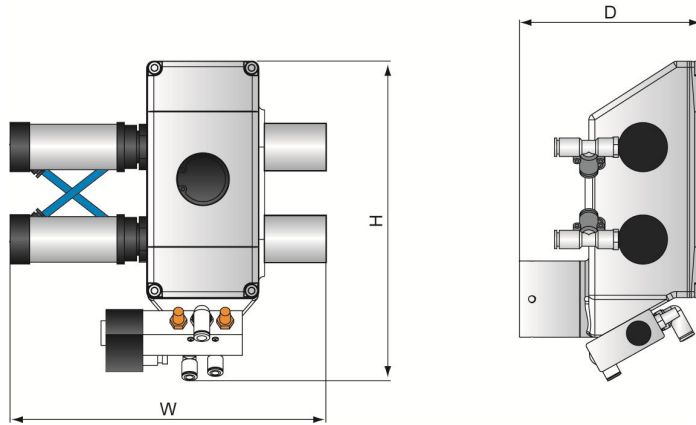
Tel: (86) 769 8111 6600

Shini Plastics Technologies India Pvt.Ltd.:

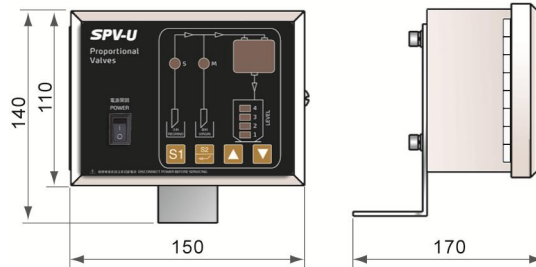
Tel: (91) 250 3021 166

1.3 Technical Specifications

1.3.1 External Dimension



Picture 1-1: Proportional valve



Picture 1-2: Control box

1.3.2 Specifications

Table 1-1: Specifications

Model	Ver.	Compressed Air Pressure	Driven Means	Maximum Material Flow	Pipe Size (inch)	Dimensions (mm) H×W×D	Weight (kg)
SPV-38U-(C)	C	3kgf/cm ² Compressed Air	Cylinders	350kg/hr	1.5	270 × 260 × 150	3.5
SPV-50U-(C)	C	3kgf/cm ² Compressed Air	Cylinders	550kg/hr	2	270 × 260 × 150	3.8

Note:1) "C" stands for control box, there is no need of control box when working with SAL-U loaders.

2) Above maximum passing rate is based on pellet material of 0.65kg/L in bulk density and 3-5mm in diameter.

2) Power supply: 1Φ, 115 / 230VAC, 50/60Hz.

We reserve the right to change specifications without prior notice.

1.4 Safety Regulations

To avoid any body injures and damages of the machine, please do to observe the regulations in this manual.

When operating this machine, please observe the regulations as follows.

1.4.1 Safety Signs and Labels



Warning! Be careful!

This label means that this area should be taken care!



Attention!

No need for regular inspection because all the electrical parts in the control unit are fixed tightly!

1.5 Exemption Clause

The following statements clarify the responsibilities and regulations born by any buyer or user who purchases products and accessories from Shini (including employees and agents).

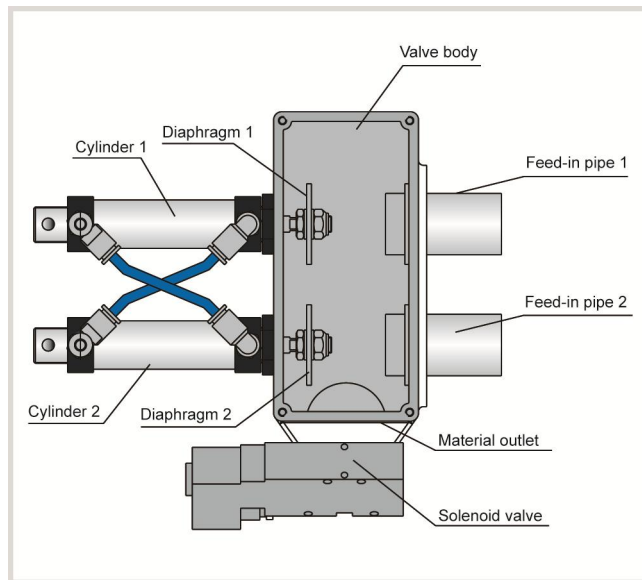
Shini is exempted from liability for any costs, fees, claims and losses caused by reasons below:

1. Any careless or man-made installations, operation and maintenances upon machines without referring to the manual prior to machine using.
2. Any incidents beyond human reasonable controls, which include man-made vicious or deliberate damages or abnormal power, and machine faults caused by irresistible natural disasters including fire, flood, storm and earthquake.
3. Any operational actions that are not authorized by Shini upon machine, including adding or replacing accessories, dismantling, delivering or repairing.
4. Employing consumables or oil media that are not appointed by Shini.

2. Structure Characteristics and Working Principle

2.1 Working Principle

After set the material loading time and regrind material's proportion, the cylinder drives the conical diaphragm valve 1 and conical diaphragm valve 2's opening and closing time to control the proportional new material and regrind material entered in the hopper which to reach the purpose of proportional mixing.



Picture 2-1: Working principle illustration

3. Installation and Debugging

Read the instruction carefully before installation, must observe the installation steps as follows!

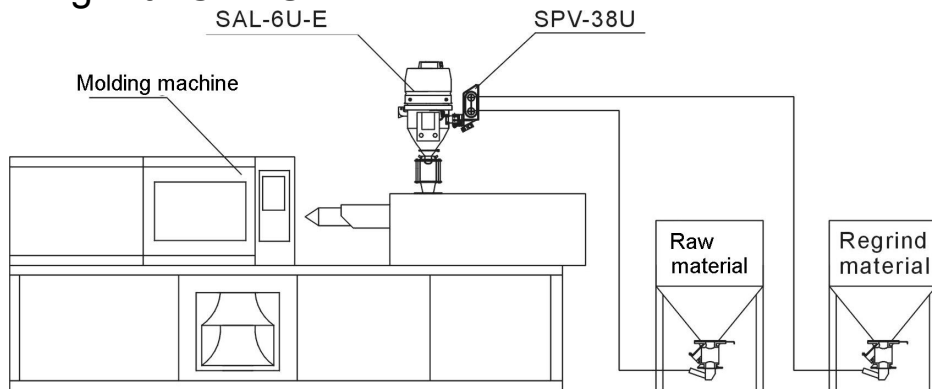


When installing SPV, please connect to the compressed air tube according to the requirements.

Notes for Installation and Positioning:

- 1) Machine just can be mounted in vertical position. Make sure there's no pipe, fixed structure or other objects above the installing location and around the machine which may block machine's installation, hit objects or injure human person.
- 2) For easy maintenance, it's suggested to leave 1m space around the machine.
- 3) Machine should be placed on water-level surface. If it needs to be mounted on a higher surface (e.g. the scaffold or the interlayer), should ensure its structure and size could bear the weight and size of the machine.

3.1 Working with SAL-U



Picture 3-1: Working with SAL-U

Mount the SPV-U at material inlet of the hopper and lock up the fixing screw; connect the material inlet of SPV-U to material storage tank or outlet of machine with the steel wired plastic pipe.

Power Supply Connection

Connect the 1ΦAC230V power supply and grounding wire to the SPV-U control box.

4. Application and Operation

SAL-U(-E) or SAL-UG has integrated with the SPV-U single-layer control function. When SPV-U collocated with hopper loader SAL-U(-E) or SAL-UG, if users just need single-layer control mode, please according to the SAL-U(-E), SAL-UG operation manual to set the loading time; if users need double, three, four layers control mode, it should use SPV-U original control box to set the parameter.

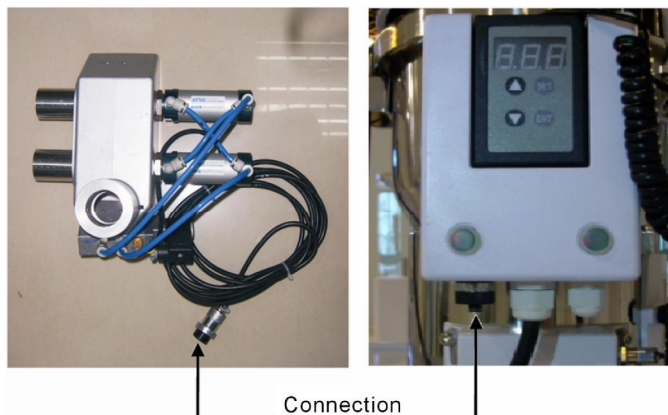
4.1 SAL-U(-E)、SAL-UG Function Instruction

4.1.1 Parameter Settings on SPV-U working with SAL-U(-E) and SAL-UG

Table 4-1: Working with SAL-U(-E)、SAL-UG parameter Settings

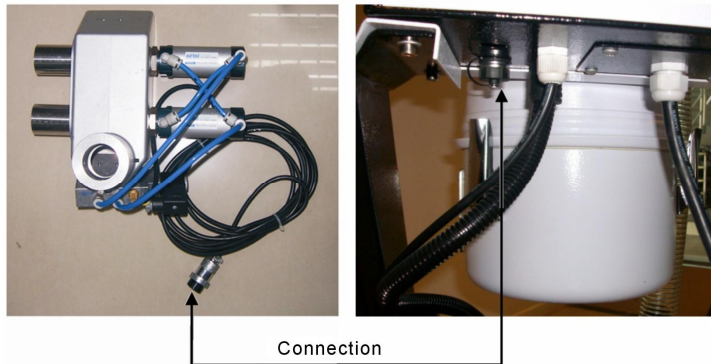
Function Symbol	Function Instruction	Parameter value	
		Setting before Delivery	Range
F. 02	<p>Mixing time</p> <p>Starting at the same time with suction, setting the time before suction time [F.02]sec.</p> <p>Action time calculate style: suction time×[F.02]% setting "0"means stop.</p>	0% No starting	0~100%

4.1.2 Instruction Diagram about Connecting with "SAL-U (-E)"



Picture 4-1: Instruction diagram about connecting with "SAL-U(-E)"

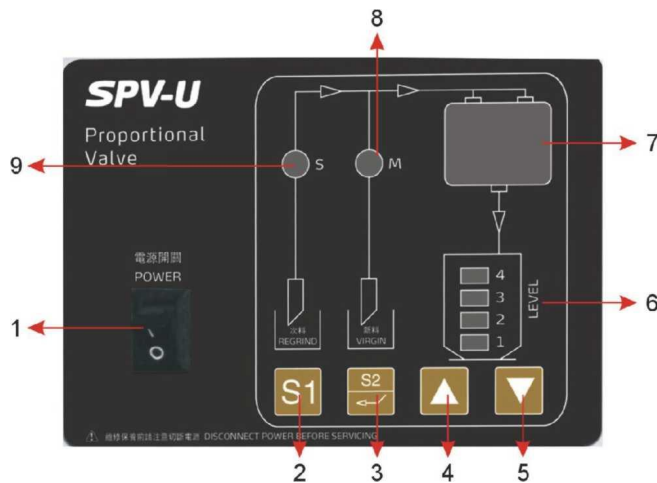
4.1.3 Instruction Diagram about Connecting with SAL-UG



Picture 4-2: Instruction diagram about connecting with SAL-UG

4.2 SPV-U with Independent Control Box

4.2.1 About the Control Panel



Picture 4-3: About the control panel









No	Name	Function Description
1	Power	Power on to start the machine
2	Loading time set	Press this key to set loading time
3	Regrind percentage set	Press this key to set the percentage
4	Up key	Press this key to increase set value
5	Down key	Press this key to decrease set value
6	Working mode indicator	Indicating working mode
7	Display setup value or working status	Display setup value or working status
8	New material conveying indicator	When new material suction begins, the indicator on.
9	Regrind material conveying indicator	When regrind material suction begins, the indicator on.




4.2.2 Start / Stop

1. Power on to start the machine, it will display software version "XX" (about 1second).
2. Turn off the power to stop the machine.
3. Shut off the loading signal to stop mixing.

4.2.3 Settings

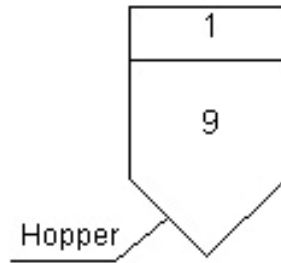
Parameter Setting

1. Displaying value will blink right after press **S1** key, new material indicator  will lighten, **【F01】** loading time (5~99 secs) is available for setting. Press  or  key to adjust loading time, and to press **S1** or **S2** after setup to confirm and save the value, but it will bounce out automatically without save if there is no input for 5 seconds.
2. Displaying value will blink right after press **S2** key, regrind material indicator  will blink, **【F02】** regrind percentage (1~99 %) is adjustable. Press  or  key to adjust loading time, and to press **S2** after setup to confirm and save the value, but it will bounce out automatically without save if there is no input for 5 seconds.
3. Displaying value will lighten right after press  +  for 3 seconds, working

mode indicators  will lighten, **【F03】** (use 1, 2, 3, 4 to stand for different working modes). Press  or  key to adjust working mode, and to press **S1** or **S2** after setup to confirm and save the value, but it will bounce out automatically without save if there is no input for 5 seconds.

Working mode selection

1. Working mode 1: (1-percentage)×loading time is for new material + percentage × loading time is for regrind material.
For example: Total loading time is 10 second.
Regrind percentage is 10%. 9 → 1

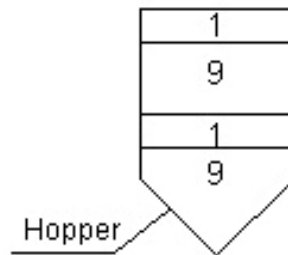


Picture 4-4: Material loading diagram of hopper (single-layer working mode)

2. Working mode 2: $(1 - \text{percentage}) \times \text{half of the loading time}$ is for new material + $\text{percentage} \times \text{half of the loading time}$ is for regrind material + $(1 - \text{percentage}) \times \text{half of the loading time}$ is for new material + $\text{percentage} \times \text{half of the loading time}$ is for regrind material.

For example: Total loading time is 20 second. Regrind percentage is 10%.

$9 \rightarrow 1 \rightarrow 9 \rightarrow 1$

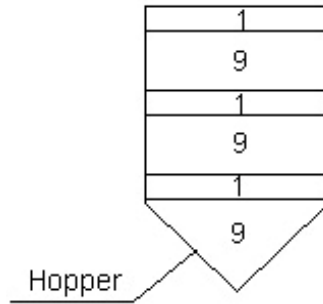


Picture 4-5: Material loading diagram of hopper (double-layer working mode)

3. Working mode 3: $(1 - \text{percentage}) \times \text{one third of the loading time}$ is for new material + $\text{percentage} \times \text{one third loading time}$ is for regrind material + $(1 - \text{percentage}) \times \text{one third of the Loading time}$ is for new material + $\text{percentage} \times \text{one third loading time}$ is for regrind material + $(1 - \text{percentage}) \times \text{one third of the loading time}$ is for new material + $\text{percentage} \times \text{one third loading time}$ is for regrind material.

For example: Total loading time is 30 second. Regrind percentage is 10%.

$9 \rightarrow 1 \rightarrow 9 \rightarrow 1 \rightarrow 9 \rightarrow 1$



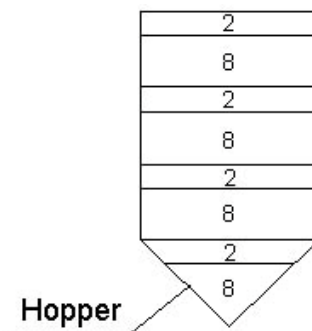
Picture 4-6: Material loading diagram of hopper (three-layer working mode)

4. Working mode 4: (1-percentage) × one fourth of the Loading time is for new material + percentage × one fourth loading time is for regrind material + (1-percentage) × one fourth of the Loading time is for new material + percentage × one fourth loading time is for regrind material + (1-percentage) × one fourth of the Loading time is for new material + percentage × one fourth loading time is for regrind material + (1-percentage) × one fourth of the Loading time is for new material + percentage × one fourth loading time is for regrind material.

For example: Total loading time is 40 second.

Regrind percentage is 20%.

8 → 2 → 8 → 2 → 8 → 2 → 8 → 2



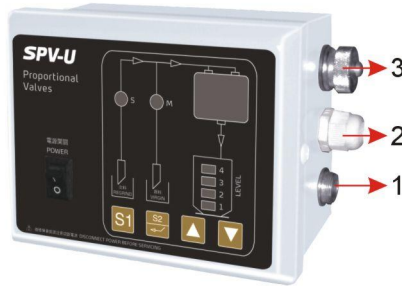
Picture 4-7: Material loading diagram of hopper (four-layer working mode)

Settings

1. Working mode 1: Applicable range 5~99sec
 2. Working mode 2: Applicable range 16~99sec
 3. Working mode 3: Applicable range 31~99sec
 4. Working mode 4: Applicable range 45~99sec
- ※ Minimal regrind loading time is 1sec

※At setting mode, if to adjust【F01~F03】, the software will automatically ensure regrind loading time be no less than 1sec

4.2.4 Connections



Picture 4-8: Connections

No.	Name	Function Description
1	Input loading signal	SPV-U will be receiving an activation signal when hopper loader starts
2	Power cable	SPV-U will be receiving an activation signal when hopper loader starts
3	Output signal for Proportioning solenoid valve	Proportioning solenoid valve will open when hopper loader is working

5. Trouble-shooting

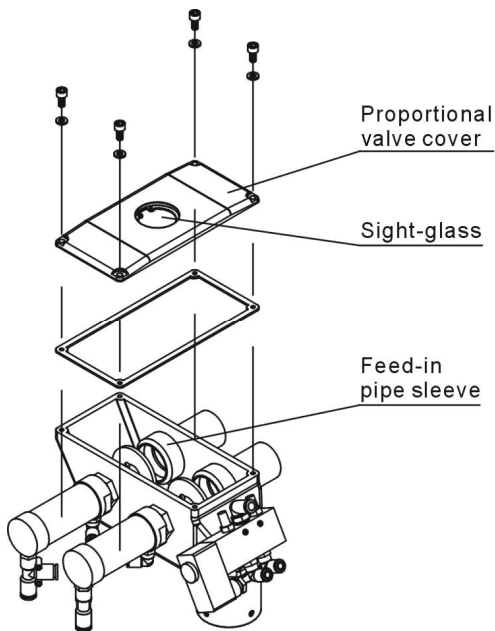
Failures	Possible Reasons	Solutions
Cylinder does not work	1. Solenoid valve broken	1. Replace
	2. Did not connect the compressed air tube	2. Connect
	3. Did not connect signal wire or broken	3. Connect or changed

6. Maintenance and Repair

6.1 Maintenance

All the repair work should be done by professionals in order to prevent personal injuries and damage of the machine.

Keep the external valve body clean, pay attention to the solenoid valve's maintenance.



1. Open the proportional valve cap and check whether the material inlet pipe sleeve is seriously worn and teared, replace it when there is air leakage.
2. Check the wear condition of the material inlet pipe sleeve from the sight window.
Period: Daily.

6.2 Maintenance Schedule

6.2.1 About the Machine

Model _____ SN _____ Manufacture date _____

Voltage _____ Φ _____ V Frequency _____ Hz Power _____ kW

6.2.2 Check after Installation

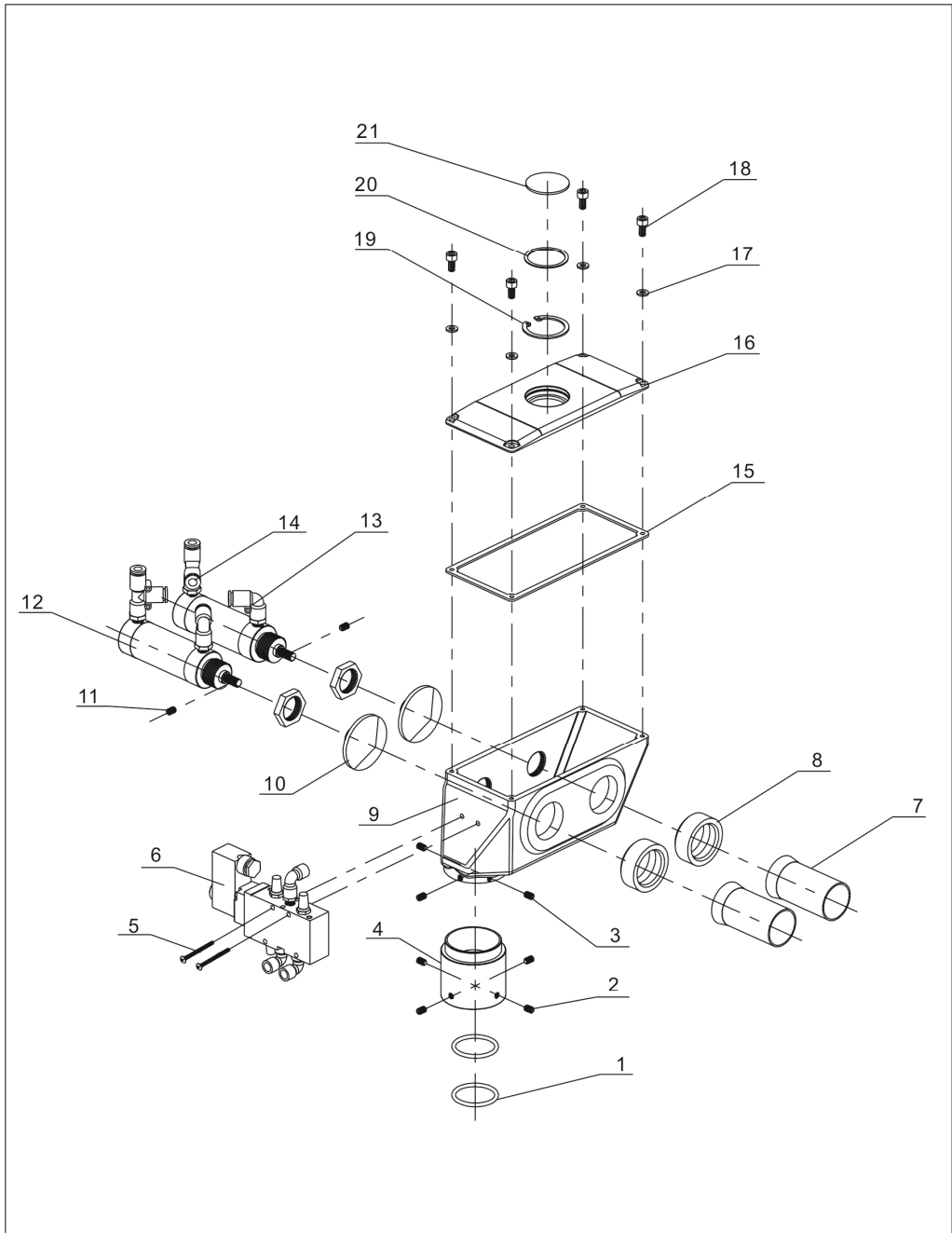
- Make sure the pipe connecting is correct
- Make sure the connecting pipe is lock and tighten
- Make sure the mounting base is lock and tighten

Electrical Installation

- Voltage check: _____ V _____ Hz
- Signal wire connecting
- Pressure air connecting

7. Drawing and Parts List

7.1 Assembly Drawing



Remarks: Please refer to material List 15.2 for specific explanation of the arabic numbers in parts drawing.

7.2 Parts List

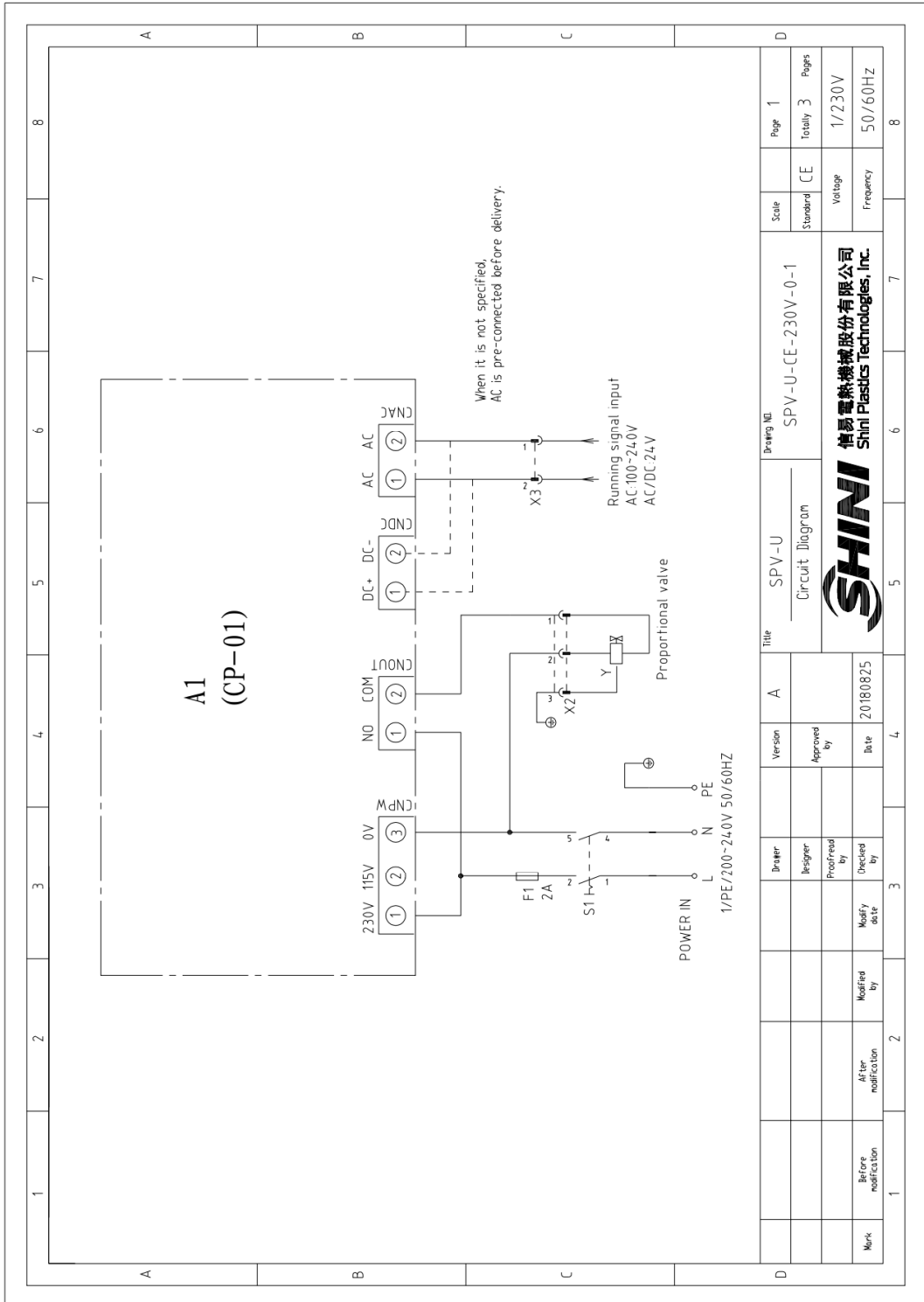
No.	Name	Part No.	
		SPV-38U-(C)	SPV-50U-(C)
1	O sealing ring*	YR20375300000	YR20503500000
2	Set screw M6×10	YW68061000000	YW68006600000
3	Set screw M4×5	YW68004500000	YW68004500000
4	Pipe sleeve for absorbing material	BH13003800010	BH13005000010
5	Cross socket head cap screw M4×25	YW63042500000	YW63042500000
6	Solenoid valve*	YE32421600000	YE32421600000
7	Feed-in pipe	BL30380400020	BL30500200020
8	Feed-in pipe sleeve	YR10003800000	YR10005000000
9	Proportional valve	BW20103800110	BW20105000110
10	Line cone diaphragm	BL30003810020	BL30005010020
11	Set screw	YW68005500000	YW68005500000
12	Air tank	BH10380800010	BH10380800010
13	Air pipe connector	YW80061800200	YW80061800200
14	Air pipe connector	YW80601800000	YW80601800000
15	Valve cover fastener	YR10003000100	YR10003000100
16	Valve cover	BW20003800010	BW20003800010
17	Flat gasket	YW66051000000	YW66051000000
18	Socket screw M5×12	YW61051200000	YW61051200000
19	Circle-lip for shaft	YW69004200000	YW69004200000
20	Material observation window stringency	YR10423600000	YR10423600000
21	Glass lens	YW70415200000	YW70415200000

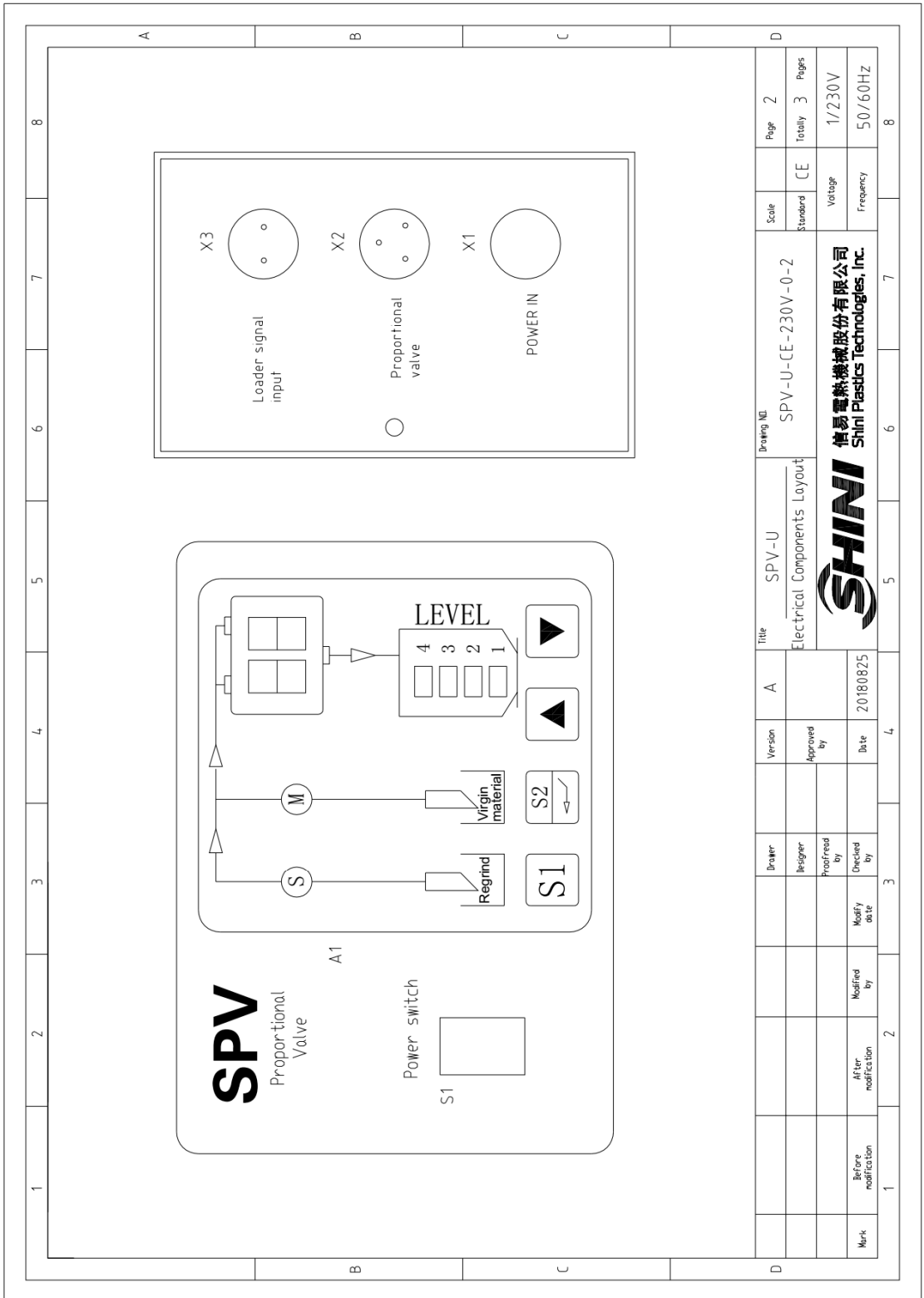
* means possible broken parts.

** means easy broken part and spare backup is suggested.

Please confirm the version of manual before placing the purchase order to guarantee that the item number of the spare part is in accordance with the real object.

8. Electrical Diagram





Mark	Before modification	After modification	Modified by	Modify date	Decided by	Drawn by	Version	A	Title	SPV-U	Drawing No.	Scale	Page
							Approved by		Electrical Components Layout	SPV-U-CE-230V-0-2	Standard	2	
							Date				CE	Totally	
							20180825					3	
												Voltage	
												Frequency	
												1/230V	
												50/60HZ	
												8	

SHINI 信易電熱機械股份有限公司
Shini Plastics Technologies, Inc.

1		2		3		4		5		6		7		8	
No.	Symbol	Name	Manufacturer	Type	Specification	Number	Material number	Remark							
1	F1	Fuse base	SHINI	SF-15	250V 2A	1	YE46201500000								
2	S1	Alternative switch	REAB	VL100	12x19 5A	1	YE10121900000								
3	Y	Solenoid valve	FESTO	MFH-5-1/8-B	230V 60Hz	1	YE32421600000	(1)							
4	A1	Circuit board	YUYUN	CP-01	115/230VAC 50/60HZ	1	YE80012200300								
5	X1	Power line	SHINI	H05VV-F	250V 15A 3P	1	YE62050300000								
6	X2	Water-proof connector	AOPULO	AQF-16	3P	1	YE62163000100								
7	X3	Metal connector	APEX	RLT-252 PR(特)	2P	1	YE68016200000								
8		Metal connector	APEX	RLT-252 RR(公)	2P	1	YE68016200100								
B															
C															
D															
Notes: (1)Means it's not the material inside the control box.															
				Title		SPV-U		Drawing NO		SPV-U-CE-230V-0-3		Scale		Page 3	
				Version		A		Electrical Components List				Standard		CE	
				Designer				Approved by				Voltage		1/230V	
				Proofread by				Date		20180825		Frequency		50/60HZ	
				Modified by				Modify date							
				After modification											
				Before modification											
 信易電熱機械股份有限公司 Shini Plastics Technologies, Inc.															