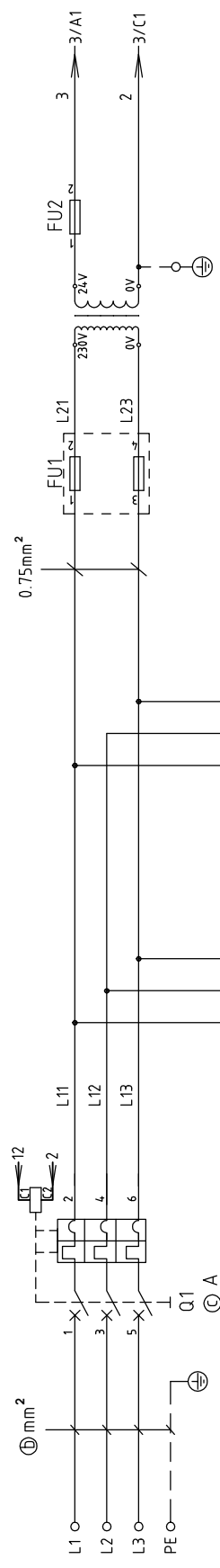


- (a) Total input current
- (b) Main power wire dia.
- (c) Rated current of breaker
- (d) Drying blower wire dia.
- (e) Drying blower power
- (f) Drying blower current
- (g) Heater wire dia.
- (h) Heater power
- (i) Heater current

Mode	Symbol	Ver.	(a)	(b)	(c)	(d)	(e)	(f)	(g)	(h)	(i)
SHD-12SL-H		Ver.D	7.8	2.5	10	1.0	0.05	0.3	1.5	3.0	7.5
SHD-25SL-H		Ver.C	8.8	2.5	16	1.0	0.12	0.42	1.5	3.3	8.3
SHD-50SL-H		Ver.C	11	2.5	16	1.0	0.12	0.42	2.5	4.2	10.5
SHD-75SL-H		Ver.C	12.5	2.5	16	1.0	0.12	0.42	2.5	4.8	12
SHD-100SL-H		Ver.C	17.1	2.5	25	1.0	0.12	0.42	2.5	6.6	16.6
SHD-150SL-H		Ver.C	18.6	2.5	25	1.0	0.12	0.42	2.5	7.2	18.1
SHD-200SL-H		Ver.C	38.3	10.0	50	1.0	0.18	0.6	6.0	15	37.7

版本 Ver.C

Mark	Before modification	Modified by	Modify date	Checked by	Proofread by	Designer	Drawer	Version	A	Title SHD-12SL~200SL-H Parameter List of Circuit Diagram		Drawing NO. SHD-12SL~200SL-H-CE-230V-A-1		Scale	Page 1
	After modification	Modified by	Modify date	Checked by	Proofread by	Designer	Drawer	Approved by		SHINI 信易電熱機械股份有限公司 Shini Plastics Technologies, Inc.		Standard	Totally 10 Pages		
														Voltage	230V
														Frequency	50HZ



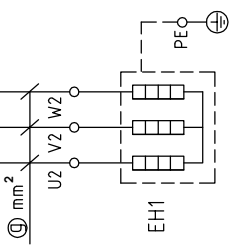
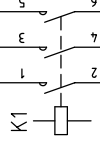
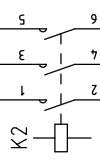
0.75mm²

12mm²

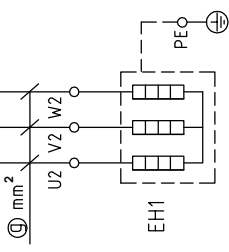
L1
L2
L3
PE
Q1
3/PE/230V 50Hz
INPUT = ③ A

L11
L12
L13

FU1
FU2
L21
L23
230V
24V
0V
3/A1
3/C1



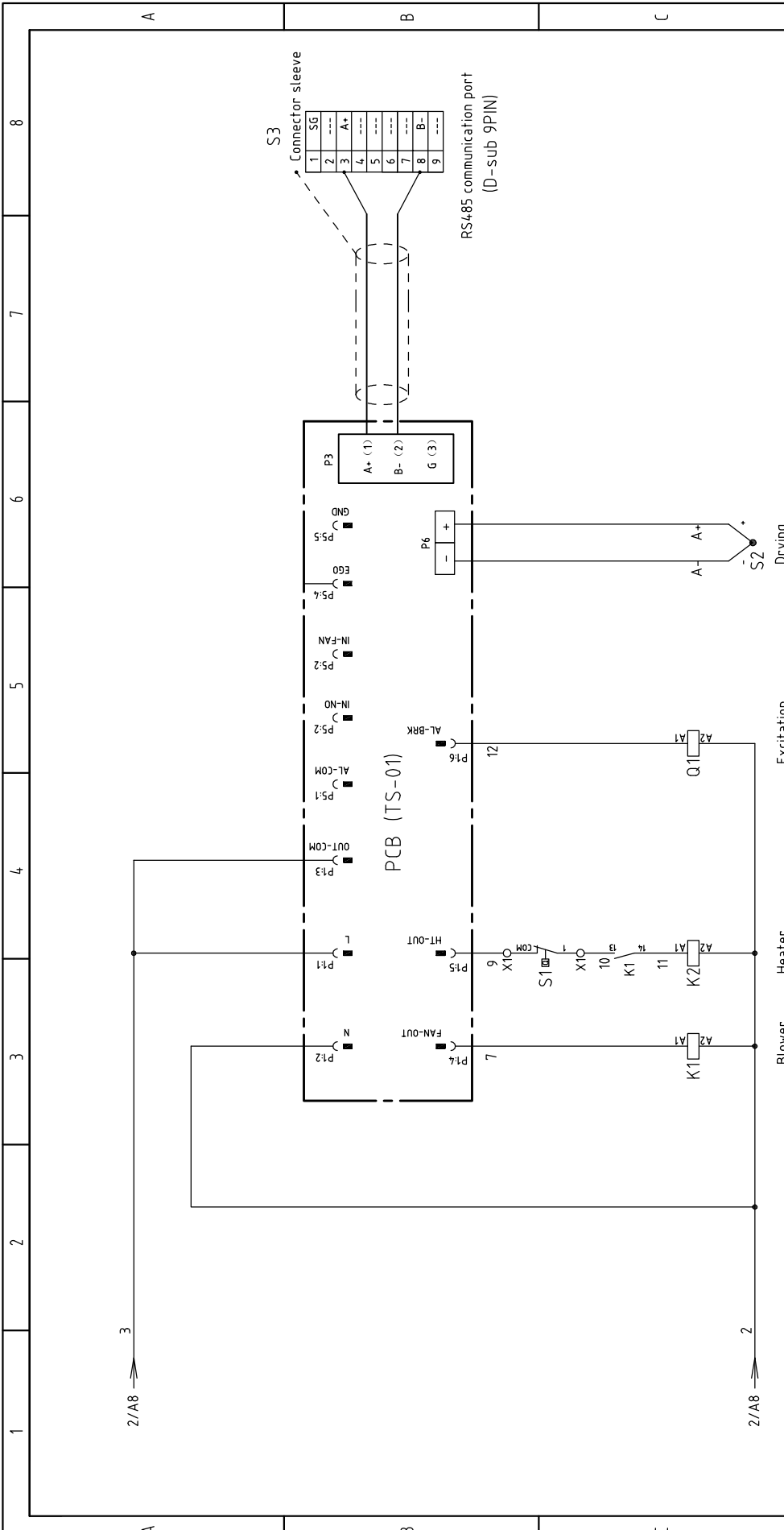
P = ⑥ kW
IN = ① A
Drying blower



P = ⑥ kW
IN = ① A
Drying heater

版本 Ver.C

Mark	Before modification	Modified by	Modify date	Checked by	Date	2016.04.25	A	Title	SHD-12SL~200SL-H Electrical Diagram 1		Drawing NO. SHD-12SL~200SL-H-CE-230V-A-2	Scale	Page	2			
	After modification	Modified by	Modify date	Checked by	Date				Standard	CE			Totally	10	Pages	Voltage	230V
												Frequency	50HZ				
												SHINI 信易電熱機械股份有限公司 Shini Plastics Technologies, Inc.					



Notes: For SHD-600SL below models, cancel wire No.8 of heatless overload relay, line No.7 connect to K1 coil.
 There's no temperature protector of SHD-25SL/50SL/100SL/150SL, cancel No.10 line mark, S1, X1; line No.9 connect to K1 contact directly.

版本	Ver.C
Mark	Before modification
	Modified by
	Modify date
	Checked by
	Proofread by
	Designer
	Drawer
	Version
	Approved by
	Date
	20160425

Title		SHD-12SL~200SL-H	
Electrical Diagram 2		SHD-12SL~200SL-H-CE-230V-A-3	
Scale	Standard	CE	Page 3
			Totally 10 Pages
		Voltage	230V
		Frequency	50HZ



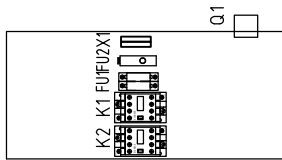
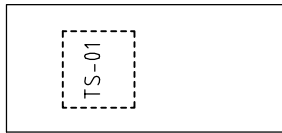
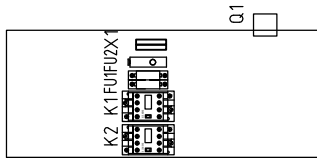
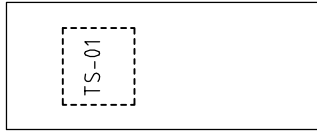
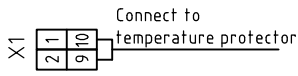
1 2 3 4 5 6 7 8

A

B

C

D



SHD-100~200SL

SHD-12~75SL

版本 Ver.C

Drawing NO.		SHD-12SL~200SL-H		Title		SHD-12SL~200SL-H		Version		A		Page		4	
Standard		CE		Electrical Components Layout		SHD-12SL~200SL-H-CE-230V-A-4		Approved by				Voltage		230V	
Frequency		50Hz		SHINI		信易電熱機械股份有限公司 Shini Plastics Technologies, Inc.		Date		2016/4/25		Totally		10 Pages	
Mark		Before modification		Modified by		Modify date		Checked by				1		2	
Mark		After modification		Modified by		Modify date		Checked by				3		4	
1		2		3		4		5		6		7		8	

1		2		3		4		5		6		7		8	
NO.	Symbol	Name	Manufacturer	Type	Specification	Number	Material number	Remark							
1	Q1	Circuit-breaker	TECO	BM-63C	16A 3P	1	YE40301603000								
2		Excitation release	CHINT	MX	24V 50/60HZ	1	YE400240000000								
3	K1	Contactor	SIEMENS	3RT6015-1AB01	24V 50/60HZ	1	YE00601502500		A						
4	K2	Contactor	SIEMENS	3RT6017-1AB01	24V 50/60HZ	1	YE00601702500								
5	FU1	Fuse base	CHINT	RT18-32	2P	1	YE41032200000								
6		Fuse	CHINT	10x38 500V	2A	2	YE46002000100								
7	FU2	Fuse	YINDA	FS-10	6x30mm 2A 250V	1	YE41001000000								
8	T	Transformer	BAIYUN	IN=230V OUT=24V	80VA	1	YE70023005900								
9	PCB	PCB	YUYUN	TS-01(24VAC) (With the communication)	24V 50/60HZ	1	YE80012400400		B						
10		Plastic box				1	YR404002000000								
11		Lamp cover of plastic box				1	YR904413000000								
12		Nameplate				1	YR01105503300								
13		Pressing plate of plastic box				1	YR900000033000								
14		Dust-proof washer of lampshade				1	YR900448000000								
15	S2	Thermocouple	SHINI	K TYPE	--	1	----	(1)							
16	M1	Blower	--	--	0.12kW	1	----	(1)							
17	EH1	Heater	SHINI	--	3.0kW	1	----	(1)							
18	S3	D 9-pin communication port (Equipped with screw)	--	--	--	1	YE900009000000		C						
版本		Ver.C		Notes: (1)Means it's not the material inside the control box.		Drawing NO.		Scale		Page		6		8	
				Title		SHD-25SL-H		Standard		CE		Totally		10 Pages	
				Version		A		SHD-12SL-200SL-H-CE-230V-A-6							
				Designer		Approved by		Electrical Components List							
				Proofread by		Date		SHINI 信易电热机械股份有限公司 Shini Plastics Technologies, Inc.		Voltage		230V			
Mark		Before modification		Modified by		Modify date		20160425		Frequency		50HZ			

1

2

3

4

5


6

7

8

1	2	3	4	5	6	7	8	
NO.	Symbol	Name	Manufacturer	Type	Specification	Number	Material number	Remark
1	Q1	Circuit-breaker	TECO	BM-63C	16A 3P	1	YE40301603000	
2		Excitation release	CHINT	MX	24V 50/60HZ	1	YE40024000000	
3	K1	Contactor	SIEMENS	3RT6015-1AB01	24V 50/60HZ	1	YE00601502500	A
4	K2	Contactor	SIEMENS	3RT6026-1AC20	24V 50/60HZ	1	YE00602602600	
5	FU1	Fuse base	CHINT	RT18-32	2P	1	YE41032200000	
6		Fuse	CHINT	10x38 500V	2A	2	YE46002000100	
7	FU2	Fuse	YINDA	FS-10	6x30mm 5A 250V	1	YE41001000000/YE4663050100	
8	T	Transformer	BAIYUN	IN=230V OUT=24V	80VA	1	YE70023005900	
9	PCB	PCB	YUYUN	TS-01(24VAC) (With the communication)	24V 50/60HZ	1	YE80012400400	
10		Plastic box				1	YR40400200000	
11		Lamp cover of plastic box				1	YR90441300000	
12		Nameplate				1	YR01105503300	
13		Pressing plate of plastic box				1	YR90000003300	
14		Dust-proof washer of lampshade				1	YR90044800000	
15	S2	Thermocouple	SHINI	K TYPE	--	1	----	(1)
16	M1	Blower	--	--	0.12kW	1	----	(1)
17	EH1	Heater	SHINI	--	3.9kW	1	----	(1)
18	S3	D 9-pin communication port (Equipped with screw)	--	--	--	1	YE90000900000	
C								
D								
版本	Ver.C	Notes: (1)Means it's not the material inside the control box.			Title		Drawing NO.	
SHD-50SL-H				SHD-12SL-200SL-H-CE-230V-A-7				Page 7
Electrical Components List				Standard				CE
SHINI				Voltage				230V
				Frequency				50HZ
			Designer		Approved by		Totally 10 Pages	
			Proofread by		Date		20160425	
Mark	Before modification	Modified by	Modify date	Checked by				
1	2	3	4	5	6	7	8	



1		2		3		4		5		6		7		8	
NO.	Symbol	Name	Manufacturer	Type	Specification	Number	Material number	Remark							
1	Q1	Circuit-breaker	TECO	BM-63C	16A 3P	1	YE40301603000								
2		Excitation release	CHINT	MX	24V 50/60HZ	1	YE40024000000								
3	K1	Contactor	SIEMENS	3RT6015-1AB01	24V 50/60HZ	1	YE00601502500								
4	K2	Contactor	SIEMENS	3RT6026-1AC20	24V 50/60HZ	1	YE00602602600								
5	FU1	Fuse base	CHINT	RT18-32	2P	1	YE41032200000								
6		Fuse	CHINT	10x38 500V	2A	2	YE46002000100								
7	FU2	Fuse	YINDA	FS-10	6x30mm 5A 250V	1	YE41001000000/YE4663050100								
8	T	Transformer	BAIYUN	IN=230V OUT=24V	80VA	1	YE70023005900								
9	PCB	PCB	YUYUN	TS-01(24VAC) (With the communication)	24V 50/60HZ	1	YE80012400400								
10		Plastic box				1	YR40400200000								
11		Lamp cover of plastic box				1	YR90441300000								
12		Nameplate				1	YR01105503300								
13		Pressing plate of plastic box				1	YR90000003300								
14		Dust-proof washer of lampshade				1	YR90044800000								
15	S2	Thermocouple	SHINI	K TYPE	--	1	----	(1)							
16	M1	Blower	--	--	0.12kW	1	----	(1)							
17	EH1	Heater	SHINI	--	4.2kW	1	----	(1)							
18	S3	D 9-pin communication port (Equipped with screw)	--	--	--	1	YE90000900000								
C															
Version															
Notes: (1)Means it's not the material inside the control box.															
Mark		Before modification	Modified by	Modify date	Checked by	Proofread by	Designer	Drawer	Version	Title	Drawing NO.		Scale	Page	8
		After modification							A	SHD-75SL-H Electrical Components List	SHD-12SL-200SL-H-CE-230V-A-8		Standard	CE	Totally 10 Pages
				20160425								Voltage		230V	
										信易電熱機械股份有限公司 Shini Plastics Technologies, Inc.		Frequency		50HZ	
D															
1															
2															
3															
4															
5															
6															
7															
8															

1	2		3			4		5		6		7		8	
NO.	Symbol	Name	Manufacturer	Type	Specification	Number	Material number	Remark							
1	Q1	Circuit-breaker	TECO	BM-63C	25A 3P	1	YE40302503000								
2		Excitation release	CHINT	MX	24V 50/60Hz	1	YE40024000000								
3	K1	Contactor	SIEMENS	3RT6015-1AB01	24V 50/60Hz	1	YE00601502500	A							
4	K2	Contactor	SIEMENS	3RT6027-1AC20	24V 50/60Hz	1	YE00602702600								
5	FU1	Fuse base	CHINT	RT18-32	2P	1	YE41032200000								
6		Fuse	CHINT	10x38 500V	2A	2	YE46002000100								
7	FU2	Fuse	YINDA	FS-10	6x30mm 5A 250V	1	YE41001000000/YE46630500100								
8	T	Transformer	BAIYUN	IN=400V OUT=24V	80VA	1	YE70023005900								
9	PCB	PCB	YUYUN	TS-01(24VAC) (With the communication)	24V 50/60Hz	1	YE80012400400								
10		Plastic box				1	YR40400200000								
11		Lamp cover of plastic box				1	YR90441300000	B							
12		Nameplate				1	YR01105503300								
13		Pressing plate of plastic box				1	YR90000003300								
14		Dust-proof washer of lampshade				1	YR90044800000								
15	S2	Thermocouple	SHINI	K TYPE	--	1	----	(1)							
16	M1	Blower	--	--	0.12kW	1	----	(1)							
17	EH1	Heater	SHINI	--	6.0kW	1	----	(1)							
18	S3	D 9-pin communication port (Equipped with screw)	--	--	--	1	YE90000900000	C							

版本 Ver.C	Notes: (1)Means it's not the material inside the control box.									
	Drawer	Designer	Version	Title	Drawing NO.		Scale	Page		
	Proofread by	Approved by	A	SHD-100SL/150SL-H	SHD-12SL-200SL-H-CE-230V-A-9		Standard	CE	Totally 10	
	Checked by	Date	20160425	Electrical Components List				Voltage		
Mark	Modified by	Modify date						Frequency		
	After modification							230V		
								50HZ		
								8		



