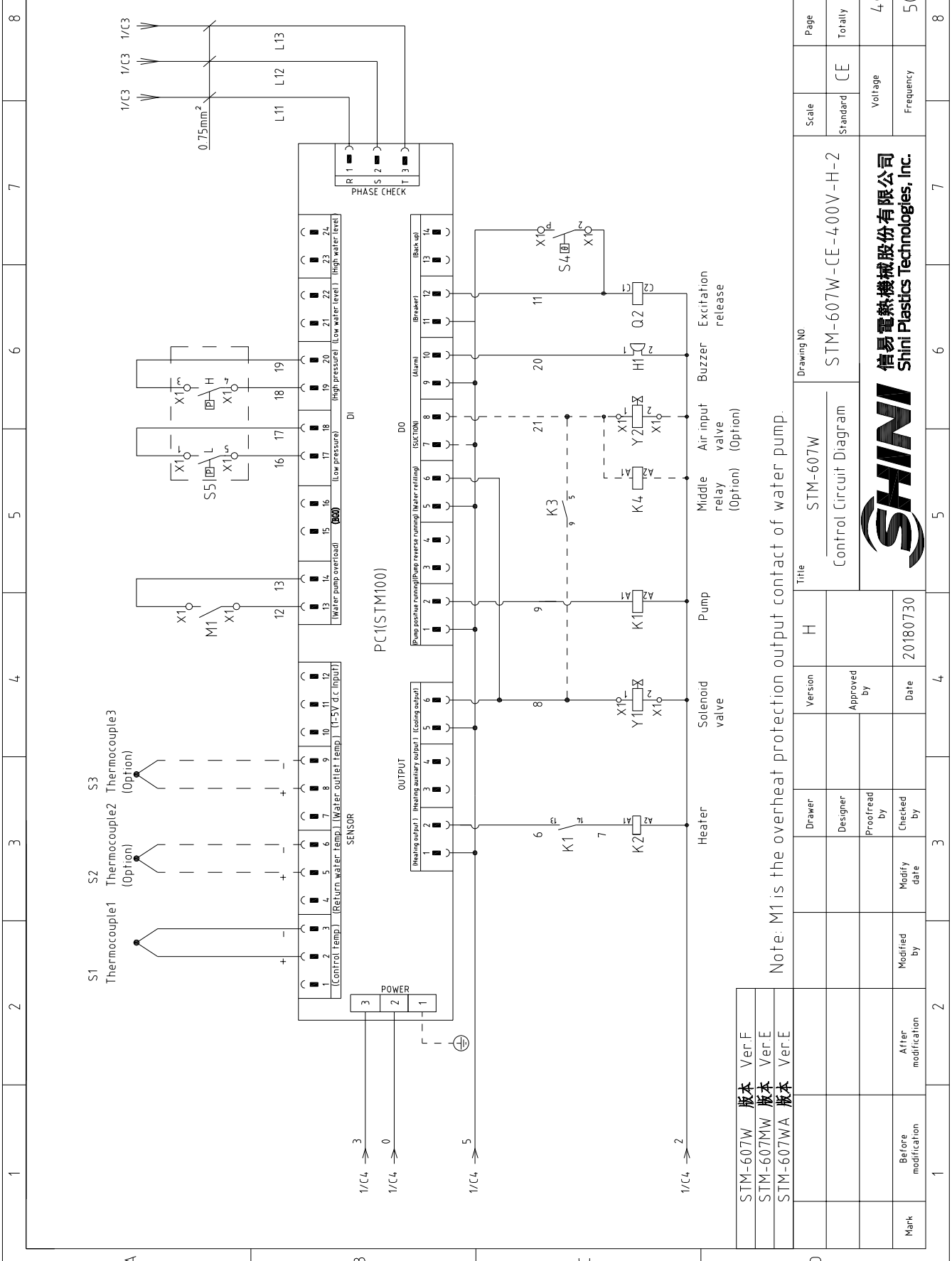


STM-607W	版本	Ver.F
STM-607MW	版本	Ver.E
STM-607WA	版本	Ver.E

When equipped with magnetic pump P=0.55KW IN=1.0A

D	Scale	Standard	CE	Page	1
	Title		STM-607W	Totally	5
Drawing NO		STM-607W-CE-400V-H-1		Voltage	400V
Main Circuit Diagram		SHINI		Frequency	50HZ
Version		H	Date		20180730
Approved by		Date		20180730	
Designer		Date		20180730	
Proofread by		Date		20180730	
Checked by		Date		20180730	
Modified by		Date		20180730	
After modification		Date		20180730	
Before modification		Date		20180730	
Mark		Date		20180730	

信易电热机械股份有限公司  
Shini Plastics Technologies, Inc.



STM-607W	版本	Ver.F
STM-607MW	版本	Ver.E
STM-607WA	版本	Ver.E

Note: M1 is the overheat protection output contact of water pump.

Mark	Before modification	Modified by	Date	20180730	Version	H	Title	STM-607W			Drawing NO	STM-607W-CE-400V-H-2		
	After modification	Modify date				Approved by			Control Circuit Diagram	Scale		Standard	CE	Page
												Voltage	400V	
												Frequency	50HZ	
												Pages	5	

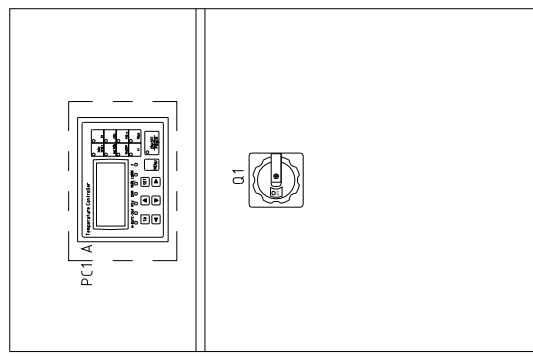
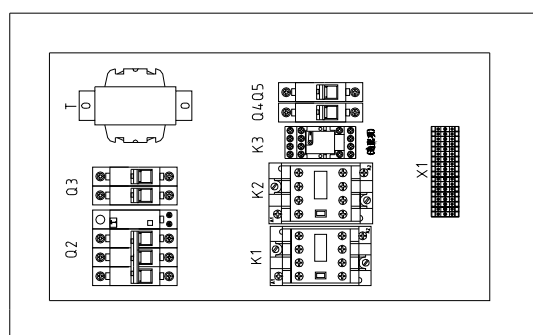
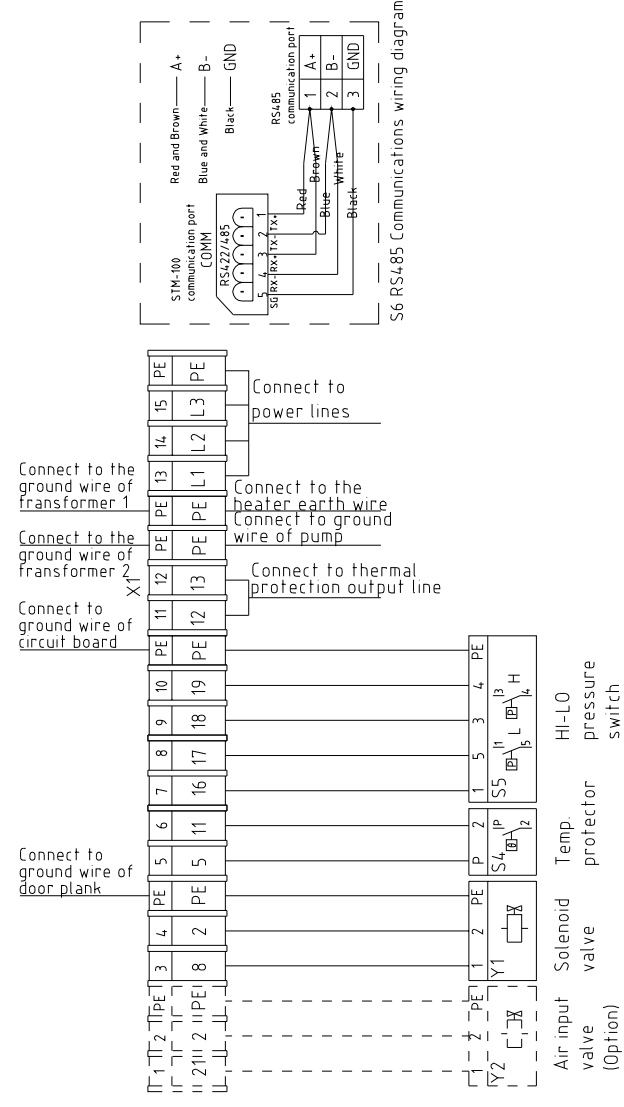


A

B

C

D



STM-607W	版本	Ver.F
STM-607MW	版本	Ver.E
STM-607WA	版本	Ver.E

Technical requirements: Pump and pipe heater should be directly connected to the output terminals of contactor and thermal overload relay.

Mark	Before modification	After modification	Modified by	Date	Checked by	Proofread by	Designer	Drawer	Version	H	Title	Scale	Page
				20180730					STM-607W	Electrical Components Layout	Standard	CE	3
											STM-607W-CE-4.00V-H-3	Standard	Totally 5
												Standard	Page
													3
													Totally 5
													Pages
													400V
													50HZ
													8

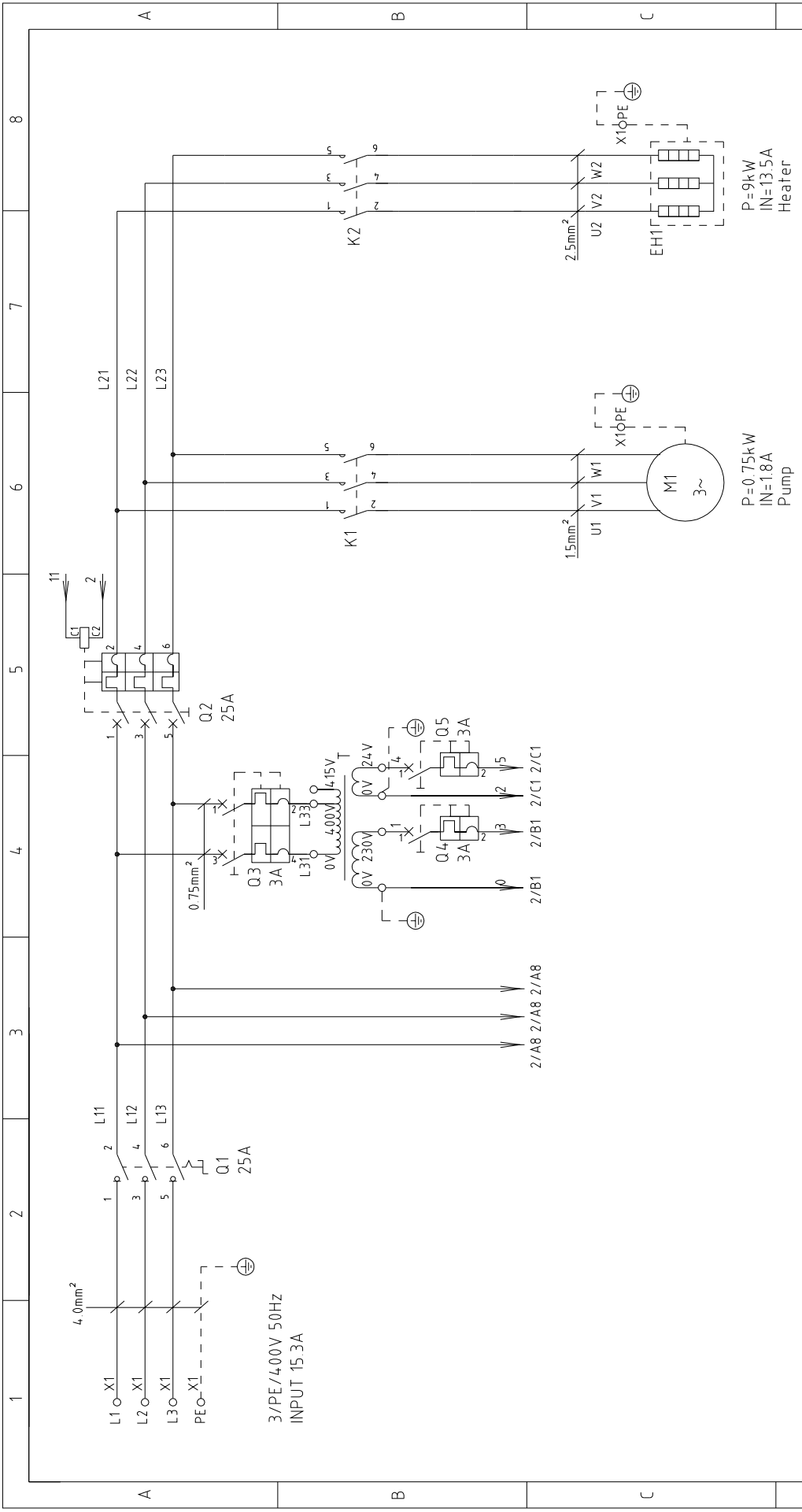


1	2		3	4	5	6	7	8
NO.	Symbol	Name	Manufacturer	Type	Specification	Number	Material number	Remark
1	Q1	Main power switch	ERATON	TO-2-1/EA/SVB	20A	1	YE10021160000	
2	Q2	Circuit breakers	TECO	BM-63C/3016S	16A	1	YE40301603000	
3	Q3	Excitation release	TECO	MX	24VAC	1	YE40024000000	A
4	Q4 Q5	Circuit breakers	TECO	BM-63C/2003S 2P	3A	1	YE40200203000	
5	Q4 Q5	Circuit breakers	TECO	BM-63C/1003S 1P	3A	2	YE40100203000	
6	K1	Contactors	SIEMENS	3RT6015-1AB01	24VAC	1	YE00601502500	
7	K2	Contactors	SIEMENS	3RT6018-1AB01	24VAC	1	YE00601802500	
8	K4	Middle relay	HONEYWELL	GR-2C-AC24V	24VAC	1	YE03022400300	(4)
9	T	Transformer	JIUXIN	IN=400V/415V OUT=24V/230V	80VA/500mA	1	YE70040007200	
10	S1	Thermocouple	SHINI	----	K	1	----	(1)
11	S2 S3	Thermocouple	SHINI	----	K	2	----	(1)(2)
12	S4	Overheat protector	----	----	----	1	----	(1)
13	S5	HI-LO pressure switch	----	----	----	1	----	(1)
14	S6	Communication interface board RS-485 (double Dsub-9pin connector)	YUYUN	----	PCS	1	YE90048501200	
15	PC1 A	Shell RS485(SAL-700G-A-19)0	BINGHENG	----	PCS	1	YR40048500000	
16	H1	Circuit board	HANYOUNGNUX	STM100-21 (含通讯)	180~4.30V 50/60Hz	1	YE81184300200	
17	H1	Buzzer	JINGKANG	PK-35A	24VAC/DC	1	YE84003500600	(1)
18	Y1	Solenoid valve	----	----	24VAC	1	----	(1)
19	Y2	Solenoid valve	----	----	24VAC	1	----	(1)(4)
20	X1	Terminal board	HONEYWELL	SK2.5	----	13	YE60002503200	
21		Terminal board	HONEYWELL	SK2.5PE	----	5	YE60002503400	
22		Terminal board	HONEYWELL	SK2.5	----	2	YE60002503200	(4)
23		Terminal board	HONEYWELL	SK2.5PE	----	1	YE60002503400	(4)
24	M1	Motor	SHINI	TP-55	400V 50Hz 0.55kW	1	----	(1)
25	M1	Motor	SHINI	MP-55	400V 50Hz 0.55kW	1	----	(1)(3)
STM-607W 版本 Ver.F			STM-607W A 版本 Ver.E	Notes: (1)Means it's not the material inside the control box (2)Means equipped with function of displaying water outlet and return water temperature. (3)Means equipped with magnetic pump. (4)Means optional air-blowing cleaning function.				
D				Title	Drawing NO	Scale	Page	4
				Electrical Components List 1	STM-607W	STM-607W-CE-4.00V-H-4	Standard	CE
Mark				Before modification	Modified by	Modify date	Voltage	400V
				Designer	Proofread by	Checked by	Frequency	50HZ
				Version	Approved by	Date	Totally	5
				H	Date	20180730	Pages	8
				STM-607W	Electrical Components List 1	STM-607W-CE-4.00V-H-4	Voltage	400V
				SHINI	SHINI	SHINI	Frequency	50HZ



信易电热机械股份有限公司  
Shini Plastics Technologies, Inc.

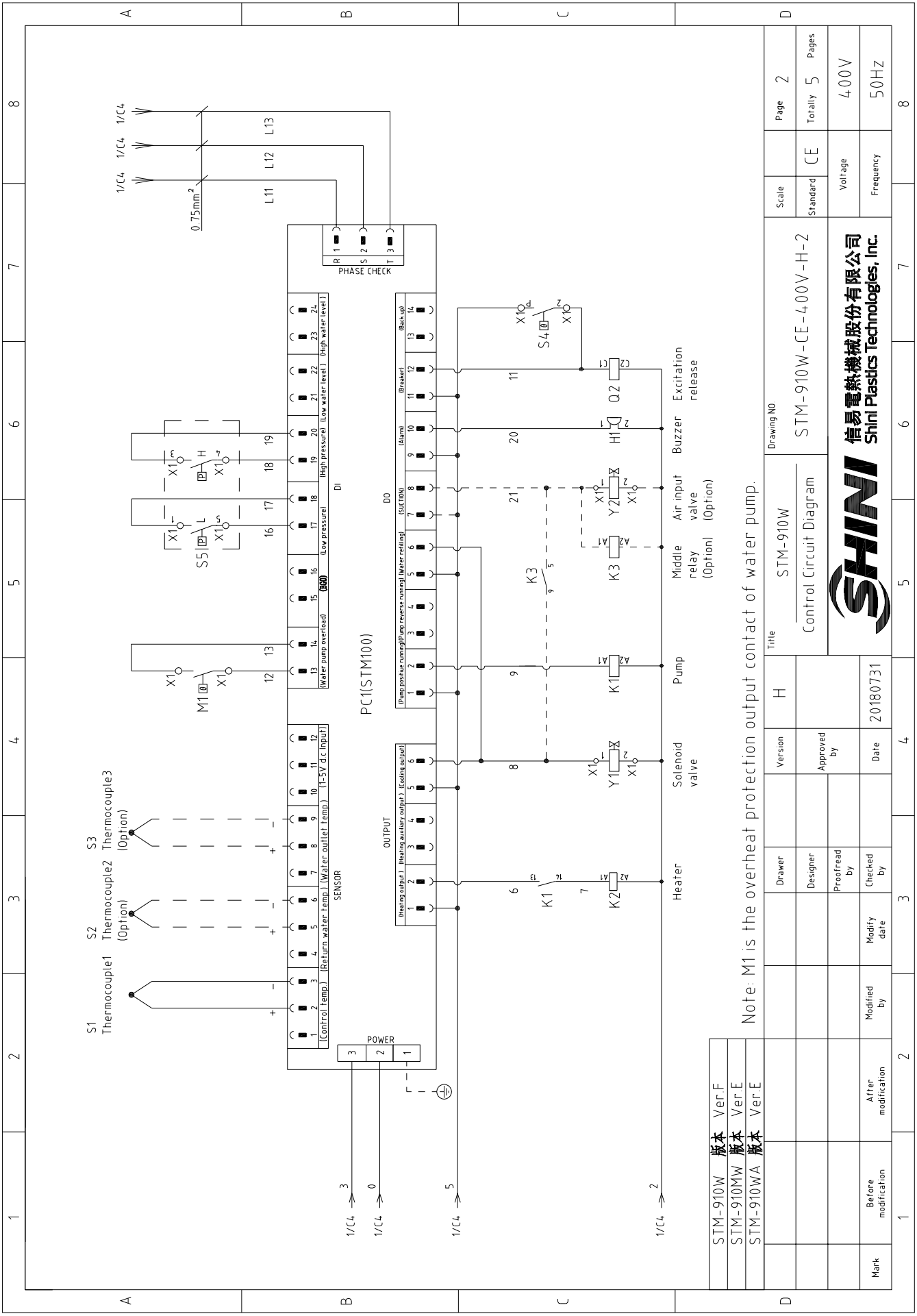




STM-910W	版本	Ver.F
STM-910MW	版本	Ver.E
STM-910WA	版本	Ver.E

When equipped with magnetic pump P=1.0KW IN=18A

D	Title		Drawing NO		Page	1
	STM-910W		STM-910W-CE-4.00V-H-1		Standard	CE
Main Circuit Diagram		Scale		Voltage		400V
SHINI		Version		Frequency		50HZ
信易电热机械股份有限公司 Shini Plastics Technologies, Inc.		Approved by		Totally		5 Pages
Mark	Before modification	Modified by	Modify date	Date		20180731
	After modification	Checked by		Date		
1	2	3	4	5	6	7
1	2	3	4	5	6	7



STM-910W	版本	Ver.F
STM-910MW	版本	Ver.E
STM-910WA	版本	Ver.E

Note: M1 is the overheat protection output contact of water pump.

Title		Drawing NO	
STM-910W		STM-910W-CE-400V-H-2	
Version		Scale	
H		Standard	
Approved by		CE	
Date		Voltage	
20180731		400V	
Checked by		Frequency	
Modified by		50HZ	
Modified date		Page	
2		2	
3		Totally	
4		5	
5		Pages	
6		400V	
7		50HZ	
8		8	






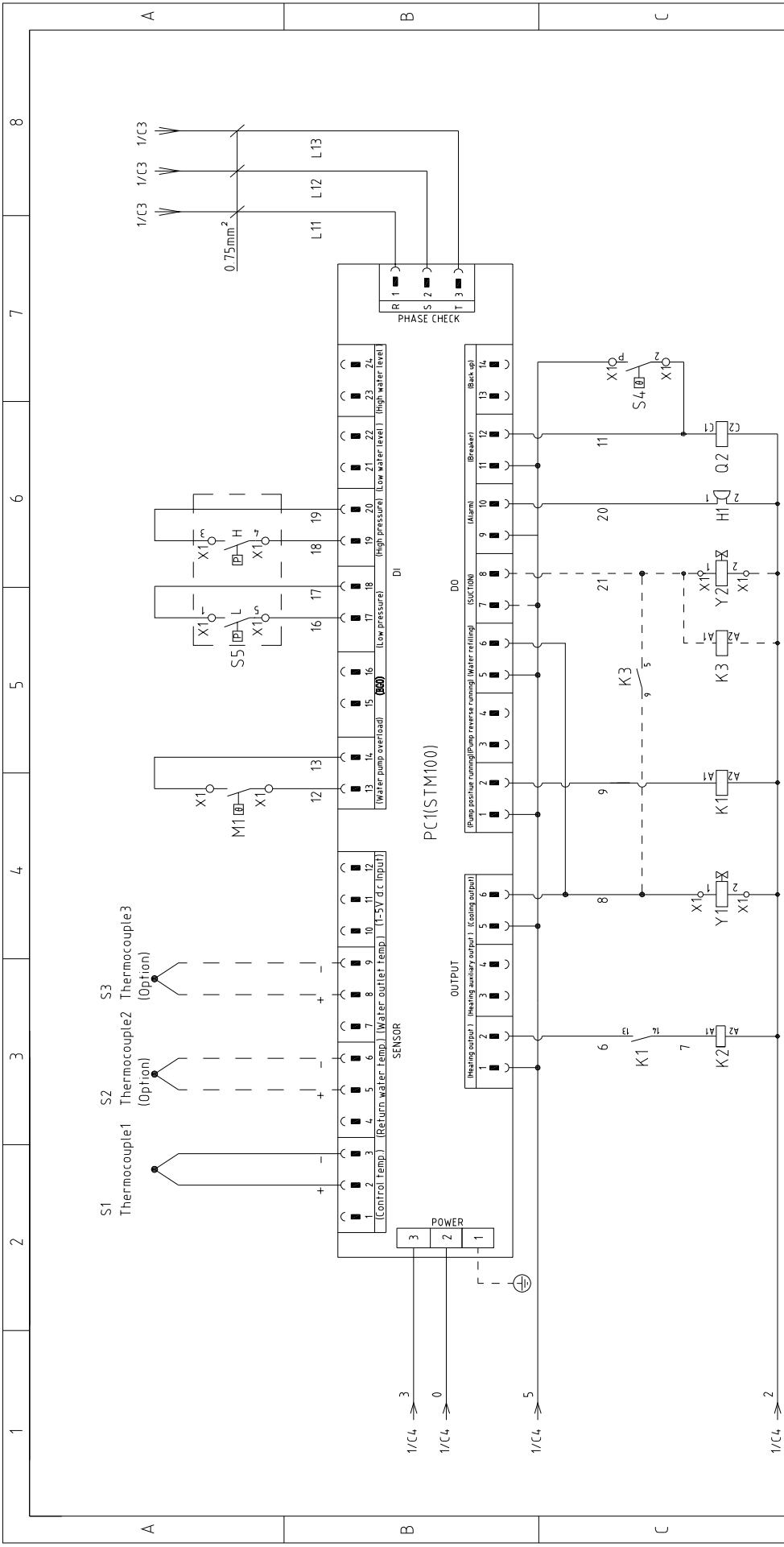


1		2		3		4		5		6		7		8	
NO.	Symbol	Name	Manufacturer	Type	Specification	Number	Material number	Remark							
1	Q1	Main power switch	EATON	TO-2-1/EA/SVB	20A	1	YE10021160000								
2	Q2	Circuit breakers	TECO	BM-63C/3025S	25A	1	YE40302503000								
3	Q3	Excitation release	TECO	MX	24VAC	1	YE40024000000								
4	Q4 Q5	Circuit breakers	TECO	BM-63C/2003S 2P	3A	1	YE40200203000								
5	K1	Contactors	SIEMENS	BM-63C/1003S 1P	3A	2	YE40100203000								
6	K2	Contactors	SIEMENS	3RT6015-1AB01	24VAC	1	YE00601502500								
7	K3	Contactors	SIEMENS	3RT6025-1AC20	24VAC	1	YE00602502600								
8	T	Middle relay	HONEYWELL	GR-2C-AC24V	24VAC	1	YE03022400300	(4)							
9	S1	Transformer	JIUXIN	IN=400V/4.15V OUT=24V/230V	80VA/350mA	1	YE70040007200								
10	S2 S3	Thermocouple	SHINI	----	K	1	----	(1)							
11	S4	Thermocouple	SHINI	----	K	2	----	(1)(2)							
12	S5	Overheat protector	----	----	----	1	----	(1)							
13	S6	HI-LO pressure switch	----	----	----	1	----	(1)							
14	PC1 A	Communication interface board RS-485 (double Dsub-9pin connector)	YUYUN	----	PCS	1	YE90048501200								
15	H1	Shell RS485(SAL-700G-A-19)0	BINCHENG	----	PCS	1	YR40048500000								
16	Y1	Circuit board	HANYOUNGUX	STM100-21 (含通讯)	180~4.30V 50/60Hz	1	YE81184300200								
17	Y2	Buzzer	JINGKANG	PK-35A	24VAC/DC	1	YE840035000600	(1)							
18	X1	Solenoid valve	----	----	24VAC	1	----	(1)(4)							
19	X2	Solenoid valve	----	----	24VAC	1	----	(1)(4)							
20	X3	Terminal board	HONEYWELL	SK2.5	----	10	YE60002503200								
21	X4	Terminal board	HONEYWELL	SK2.5PE	----	4	YE60002503400								
22	X5	Terminal board	HONEYWELL	SK4	----	3	YE60000403200								
23	X6	Terminal board	HONEYWELL	GK5PE	----	1	YE60000403500								
24	X7	Terminal board	HONEYWELL	SK2.5	----	2	YE60002503200	(4)							
25	X8	Terminal board	HONEYWELL	SK2.5PE	----	1	YE60002503400	(4)							
STM-910W 版本 Ver.F STM-910MW 版本 Ver.E STM-910WA 版本 Ver.E Notes: (1)Means it's not the material inside the control box (2)Means equipped with function of displaying water outlet and return water temperature (3)Means equipped with magnetic pump (4)Means optional air-blowing cleaning function.															
D		Title		Drawing NO		Scale		Page		4		Page		4	
		Electrical Components List 1		STM-910W		STM-910W-CE-4.00V-H-4		Standard		CE		Voltage		400V	
		Designer		Approved by		Date		20180731				Frequency		50HZ	
Mark		Before modification		After modification		Modify date									
1		2		3		4		5		6		7		8	



1		2		3		4		5		6		7		8	
NO.	Symbol	Name	Manufacturer	Type	Specification	Number	Material number	Remark							
26	M1	Motor	SHINI	TP-75	400V 50Hz 0.75kW	1	----	(1)							
27	M1	Motor	SHINI	MP-100	400V 50Hz 1.0kW	1	----	(1)(3)							
28	EH	Heater	SHINI	----	400V 50Hz 9kW	1	----	(1)							
29		Terminal fittings E/GKseries(honeywell)	HONEYWELL	----	PCS	6	YE60000003900								
A															
B															
C															
D															
STM-910W 版本 Ver.F		STM-910W 版本 Ver.E		STM-910WA 版本 Ver.E		Notes: (1)Means it's not the material inside the control box (2)Means equipped with function of displaying water outlet and return water temperature. (3)Means equipped with magnetic pump. (4)Means optional air-blowing cleaning function.									
		Title		Version		H		Drawing NO		Scale		Page		5	
		Electrical Components List 2		STM-910W		STM-910W-CE-400V-H-5		Standard		CE		Voltage		400V	
Mark		Before modification		Modified by		Modify date		Checked by		Date		Frequency		50HZ	
		20180731		20180731											
 <b>信易電熱機械股份有限公司</b> <b>Shini Plastics Technologies, Inc.</b>															
1 2 3 4 5 6 7 8															







STM-1220W	版本	Ver.F
STM-1220MW	版本	Ver.F
STM-1220WA	版本	Ver.E

Note: M1 is the overheat protection output contact of water pump.

Title		Drawing NO	
STM-1220W		STM-1220W-CE-400V-H-2	
Version		Scale	
H		Standard	
Approved by		CE	
Date		Voltage	
20180801		400V	
Checked by		Frequency	
2		50HZ	
Modified by		Page	
3		2	
Designer		Totally	
Proofread by		5	
Pages		8	
Mark		Before modification	
After modification		SHINI	
SHINI		信易电热机械股份有限公司	
SHINI		Shini Plastics Technologies, Inc.	

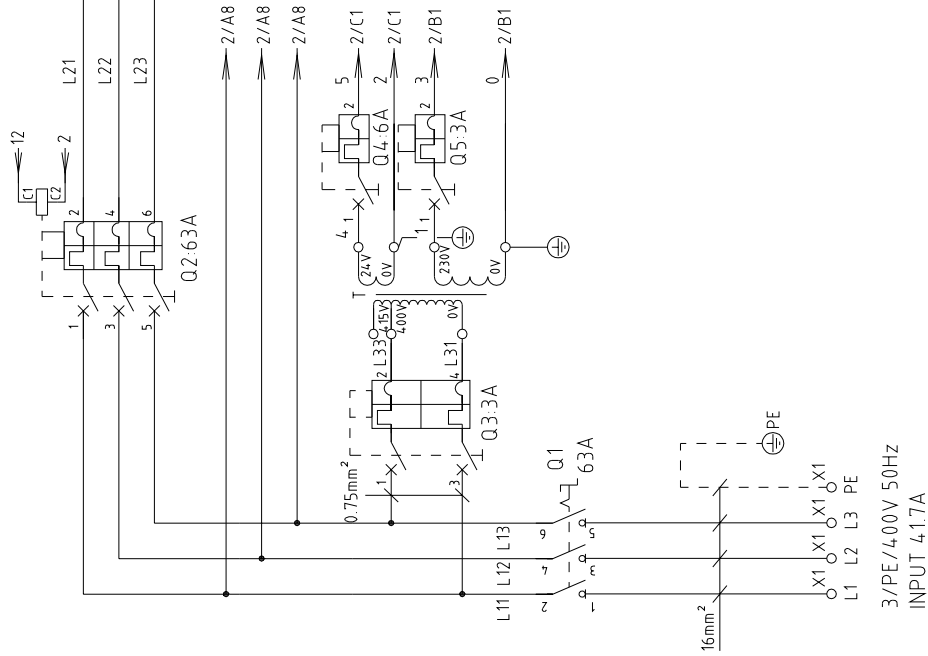


1		2		3		4		5		6		7		8			
NO.	Symbol	Name	Manufacturer	Type	Specification	Number	Material number	Remark									
1	Q1	Main power switch	EATON	P1-32/EA/SVB	32A	1	YE10323200000										
2	Q2	Circuit breakers	TECO	BM-63C/3032S	32A	1	YE40303203000										
3	Q3	Excitation release	TECO	MX	24VAC	1	YE40024000000										
4	Q4 Q5	Circuit breakers	TECO	BM-63C/2003S 2P	3A	1	YE40200203000										
5	Q4 Q5	Circuit breakers	TECO	BM-63C/1003S 1P	3A	2	YE40100203000										
6	K1	Contactors	SIEMENS	3RT6015-1AB01	24VAC	1	YE00601502500										
7	K2	Contactors	SIEMENS	3RT6026-1AC20	24VAC	1	YE00602602600										
8	K4	Middle relay	HONEYWELL	GR-2C-AC24V	24VAC	1	YE03022400300	(4)									
9	T	Transformer	JIUXIN	IN=400V/415V OUT=24V/230V	80VA/ 350MA	1	YE70040007200										
10	S1	Thermocouple	SHINI	----	----	1	----	(1)									
11	S2 S3	Thermocouple	SHINI	----	----	2	----	(1)(2)									
12	S4	Overheat protector	----	----	----	1	----	(1)									
13	S5	HI-LO pressure switch	----	----	----	1	----	(1)									
14	S6	Communication interface board RS-485 (double Dsub-9pin connector)	YUYUN	----	PCS	1	YE90048501200										
15		Shell RS485(SAL-700G-A-19)0	BINCHENG	----	PCS	1	YR40048500000										
16	PC1 A	Circuit board	HANYOUNGUX	STM100-21 (含通讯)	180~4.30V 50/60Hz	1	YE81184300200										
17	H1	Buzzer	JINGKANG	PK-35A	24VAC/DC	1	YE840035000600	(1)									
18	Y1	Solenoid valve	----	----	24VAC	1	----	(1)									
19	Y2	Solenoid valve	----	----	24VAC	1	----	(1)(4)									
20	X1	Terminal board	HONEYWELL	SK2.5	----	10	YE60002503200										
21		Terminal board	HONEYWELL	SK2.5PE	----	3	YE60002503400										
22		Terminal Board	HONEYWELL	GK5PE	----	1	YE60000403500										
23		Terminal board	HONEYWELL	GK6	----	3	YE60000603200										
24		Terminal board	HONEYWELL	GK6PE	----	1	YE60000603500										
25		Terminal board	HONEYWELL	SK2.5	----	2	YE60002503200	(4)									
STM-1220W 版本 Ver.F STM-1220MW 版本 Ver.F STM-1220WA 版本 Ver.E Notes: (1)Means it's not the material inside the control box.(2)Means equipped with function of displaying water outlet and return water temperature. (3)Means equipped with magnetic pump. (4)Means optional air-blowing cleaning function.																	
D				Drawer	Designer	Version	H	Title		Drawing NO		Scale		Page			
				Proofread by	Approved by			STM-1220W		STM-1220W-CE-4.00V-H-4		Standard		Page			
				Checked by	Date			Electrical Components List 1				CE		Totally 5 Pages			
Mark	Before modification	After modification	Modified by	Modify date	20180801			 信易电热机械股份有限公司 Shini Plastics Technologies, Inc.		Voltage		400V		Frequency		50HZ	
1	2	3	4	5	6	7	8										

1		2		3		4		5		6		7		8			
NO.	Symbol	Name	Manufacturer	Type	Specification	Number	Material number	Remark									
1	Q1	Main power switch	EATON	P1-32/EA/SVB	32A	1	YE10323200000										
2	Q2	Circuit breakers	TECO	BM-63C/3032S	32A	1	YE40303203000										
3	Q3	Excitation release	TECO	MX	24VAC	1	YE40024000000										
4	Q4 Q5	Circuit breakers	TECO	BM-63C/2003S 2P	3A	1	YE40200203000										
5	Q4 Q5	Circuit breakers	TECO	BM-63C/1003S 1P	3A	2	YE40100203000										
6	K1	Contactors	SIEMENS	3RT6015-1AB01	24VAC	1	YE00601502500										
7	K2	Contactors	SIEMENS	3RT6026-1AC20	24VAC	1	YE00602602600										
8	K4	Middle relay	HONEYWELL	GR-2C-AC24V	24VAC	1	YE03022400300	(4)									
9	T	Transformer	JIUXIN	IN=400V/415V OUT=24V/230V	80VA/ 350MA	1	YE70040007200										
10	S1	Thermocouple	SHINI	----	----	1	----	(1)									
11	S2 S3	Thermocouple	SHINI	----	----	2	----	(1)(2)									
12	S4	Overheat protector	----	----	----	1	----	(1)									
13	S5	HI-LO pressure switch	----	----	----	1	----	(1)									
14	S6	Communication interface board RS-485 (double Dsub-9pin connector)	YUYUN	----	PCS	1	YE90048501200										
15		Shell RS485(SAL-700G-A-19)0	BINCHENG	----	PCS	1	YR40048500000										
16	PC1 A	Circuit board	HANYOUNGUX	STM100-21 (含通讯)	180~430V 50/60Hz	1	YE81184300200										
17	H1	Buzzer	JINGKANG	PK-35A	24VAC/DC	1	YE840035000600	(1)									
18	Y1	Solenoid valve	----	----	24VAC	1	----	(1)									
19	Y2	Solenoid valve	----	----	24VAC	1	----	(1)(4)									
20	X1	Terminal board	HONEYWELL	SK2.5	----	10	YE60002503200										
21		Terminal board	HONEYWELL	SK2.5PE	----	3	YE60002503400										
22		Terminal Board	HONEYWELL	GK5PE	----	1	YE60000403500										
23		Terminal board	HONEYWELL	GK6	----	3	YE60000603200										
24		Terminal board	HONEYWELL	GK6PE	----	1	YE60000603500										
25		Terminal board	HONEYWELL	SK2.5	----	2	YE60002503200	(4)									
STM-1220W 版本 Ver.F STM-1220MW 版本 Ver.F STM-1220WA 版本 Ver.E Notes: (1)Means it's not the material inside the control box.(2)Means equipped with function of displaying water outlet and return water temperature. (3)Means equipped with magnetic pump. (4)Means optional air-blowing cleaning function.																	
D				Drawer	Designer	Version	H	Title		Drawing NO		Scale	Page	4			
				Proofread by	Approved by	Electrical Components List 1		STM-1220W		STM-1220W-CE-400V-H-4		Standard	CE	Totally	5		
Mark		Before modification	Modified by	Modify date	Date	20180801		 信易电热机械股份有限公司 Shini Plastics Technologies, Inc.		Voltage		400V		Frequency		50HZ	
1	2	3	4	5	6	7	8										





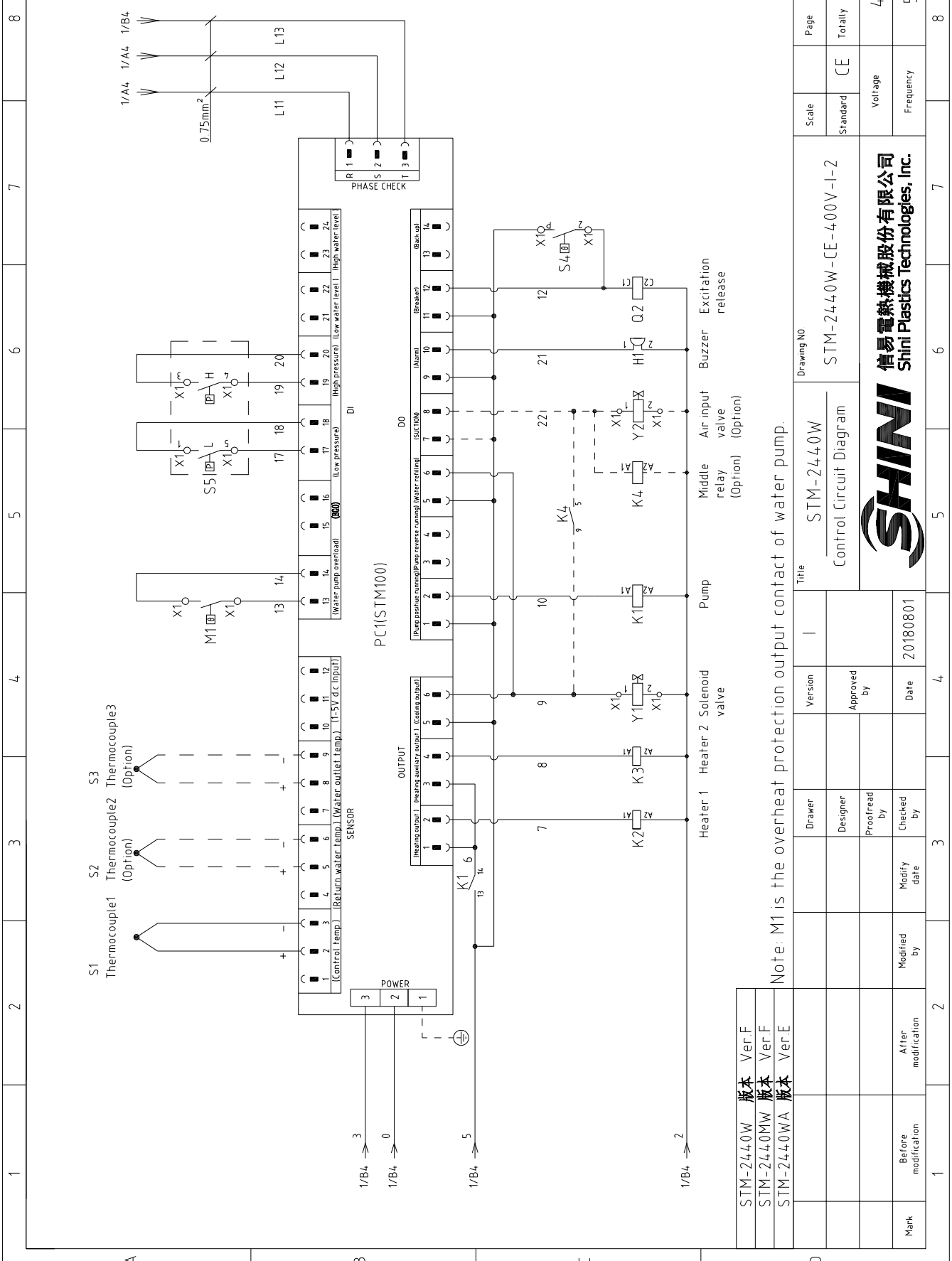


STM-2440W	版本	Ver.F
STM-2440MW	版本	Ver.F
STM-2440WA	版本	Ver.E

When equipped with magnetic pump P=2.8KW IN=6.5A

Title		Drawing NO		Scale	Page
STM-2440W		STM-2440W-CE-400V-1-1		Standard	Totally
Main Circuit Diagram		CE		Standard	Pages
Version		Date		Voltage	
I		20180801		400V	
Designer		Checked by		Frequency	
Proofread by		Modify date		50Hz	
Approved by		Date		4	
Date		20180801		8	
Modified by		After modification		2	
Mark		Before modification		1	





STM-2440W	版本	Ver.F
STM-2440MW	版本	Ver.F
STM-2440WA	版本	Ver.E

Note: M1 is the overheat protection output contact of water pump.

Mark	Before modification	Modified by	20180801	Date	Approved by	Version	Title	Drawing NO	Scale	Page
	After modification	Modify date	20180801						Standard	2
								STM-2440W-CE-400V-1-2	CE	Totally
								Voltage	5	
								Frequency	Pages	
								4.00V	5	
								50Hz	8	





1	2		3	4	5	6	7	8
NO.	Symbol	Name	Manufacturer	Type	Specification	Number	Material number	Remark
1	Q1	Main power switch	EATON	P3-63/EA/SVB	63A	1	YE10636300000	
2	Q2	Circuit breaker	TECO	BM-63C/3063S	63A	1	YE40306303000	
3		Release	TECO	MX	24VAC	1	YE40024000000	A
4	Q3	Circuit breakers	TECO	BM-63C/2003S 2P	3A	1	YE40200203000	
5	Q4	Circuit breakers	TECO	BM-63C/1006S 1P	6A	1	YE40100600100	
6	Q5	Circuit breakers	TECO	BM-63C/1003S 1P	3A	1	YE40100203000	
7	K1	Contactors	SIEMENS	3RT6016-1AB01	24VAC	1	YE00601602500	
8	K2 K3	Contactors	SIEMENS	3RT6026-1AC20	24VAC	2	YE00602602600	
9	K4	Middle relay	HONEYWELL	GR-2C-AC24V	24VAC	1	YE03022400300	(4)
10	T	Transformer	JIUXIN	IN=400V/415V OUT=24V/230V	120VA/350mA	1	YE70040007300	
11	S1	Thermocouple	SHINI	----	----	1	----	(1)
12	S2 S3	Thermocouple	SHINI	----	----	2	----	(1)(2)
13	S4	Overheat protector	----	----	----	1	----	(1)
14	S5	HI-LO pressure switch	----	----	----	1	----	(1)
15	S6	Communication interface board (double Dsub-9pin connector)	YUYUN	----	PCS	1	YE90048501200	
16		Shell RS485(SAL-700G-A-19J0)	BINCHEG	----	PCS	1	YR40048500000	
17	PC1 A	Circuit board	HANYOUNGUX	STM100-21 (含通讯)	180-4.30V 50/60Hz	1	YE81184300200	
18	H1	Buzzer	JINGKANG	PK-35A	24VAC/DC	1	YE84003500600	
19	Y1	Solenoid valve	----	----	24VAC	1	----	(1)
20	Y2	Solenoid valve	----	----	24VAC	1	----	(1)(4)
21	X1	Terminal board	HONEYWELL	SK2.5	----	10	YE60002503200	
22		Terminal board	HONEYWELL	SK2.5PE	----	3	YE60002503400	
23		Terminal board	HONEYWELL	GK5PE	----	2	YE60000403500	
24		Terminal board	HONEYWELL	GK16	----	3	YE60001603200	
25		Terminal board	HONEYWELL	GK16PE	----	1	YE60001603500	
STM-2440W 版本 Ver F STM-2440MW 版本 Ver F STM-2440WA 版本 Ver E Notes: (1)Means it's not the material inside the control box (2)Means equipped with function of displaying water outlet and return water temperature. (3)Means equipped with magnetic pump. (4)Means optional air-blowing cleaning function.								
			Drawer	Version	Title		Scale	
			Designer	Approved by	STM-2440W		Standard	Page 4
			Proofread by		Electrical Components List 1		CE	Totally 5 Pages
			Checked by	Date	STM-2440W-CE-400V-1-4		Voltage	400V
Mark			Modified by	Modify date			Frequency	50HZ
1	2		3	4	5	6	7	8



信易电热机械股份有限公司  
Shini Plastics Technologies, Inc.

1	2	3	4	5	6	7	8	
NO.	Symbol	Name	Manufacturer	Type	Specification	Number	Material number	Remark
26		Terminal board	HONEYWELL	SK2.5	----	2	YE60002503200	(4)
27		Terminal board	HONEYWELL	SK2.5PE	----	1	YE60002503400	(4)
28	M1	Motor	SHINI	TP-280	400V 50Hz 2.8kW	1	----	(1)
29	M1	Motor	SHINI	MP-280	400V 50Hz 2.8kW	1	----	(1)(3)
30	EH1 EH2	Heater	SHINI	----	400V 50Hz 12kW	2	----	(1)
31		Terminal fittings E/GKseries(honeywell)	HONEYWELL	----	PCS	6	YE60000003900	
A								
B								
C								
D								
STM-2440W 版本 Ver.F			STM-2440Mw 版本 Ver.F			STM-2440WA 版本 Ver.E		
Notes: (1)Means it's not the material inside the control box.(2)Means equipped with function of displaying water outlet and return water temperature.(3)Means equipped with magnetic pump.(4)Means optional air-blowing cleaning function.								
Title			Version			Drawing NO		
STM-2440W			I			STM-2440W-CE-400V-1-5		
Electrical Components List 2			Approved by			Scale		
						Standard		
			Date			Voltage		
			20180801			Frequency		
Mark			Before modification			Page		
						5		
						Totally		
						5		
						Pages		
						5		
						400V		
						50Hz		
						8		

