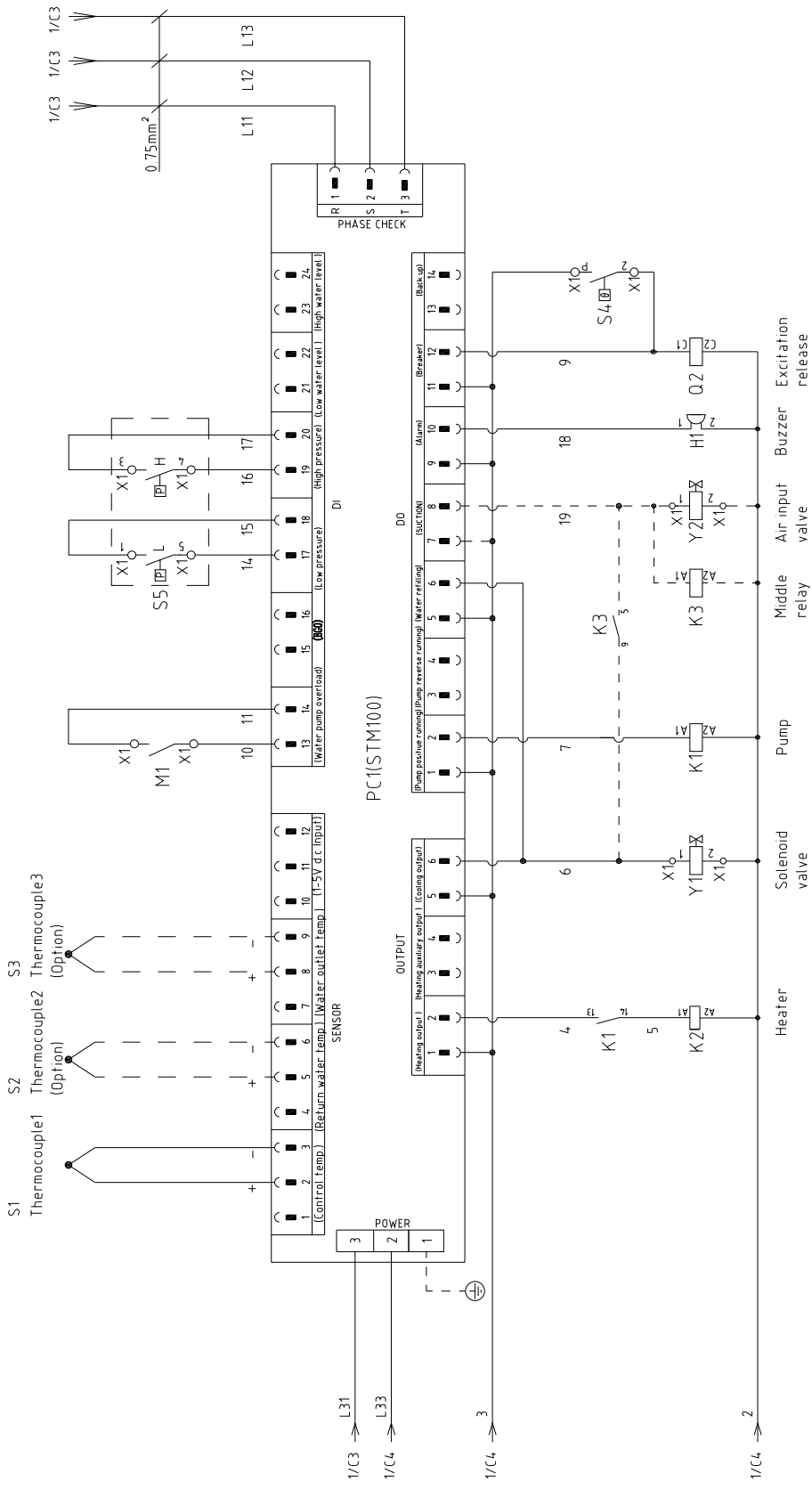


STM-607W	版本	Ver.F
STM-607MW	版本	Ver.E
STM-607WA	版本	Ver.E

When equipped with magnetic pump P=0.55KW IN=1.7A

D	Scale	Standard	CE	Page	1
	Title		STM-607W	Totally	5
Drawing NO		STM-607W-CE-230V-H-1		Pages	
Version		Approved by		Voltage	
Designer		Proofread by		Frequency	
Date		20180731		230V	
Modify date		Modified by		50HZ	
Mark		After modification		8	





STM-607W	版本	Ver.F
STM-607MW	版本	Ver.E
STM-607WA	版本	Ver.E

Note: M1 is the overheat protection output contact of water pump.

Title		Drawing NO	
STM-607W		STM-607W-CE-230V-H-2	
Version		Scale	
H		Standard	
Approved by		CE	
Date		Voltage	
20180731		230V	
Checked by		Frequency	
Modified by		50HZ	
Proofread by		Totally	
Designer		5	
Drawer		Page	
2		2	
Mark		Before modification	
After modification		2	
Modified date		7	
Checked date		6	
Approved		8	

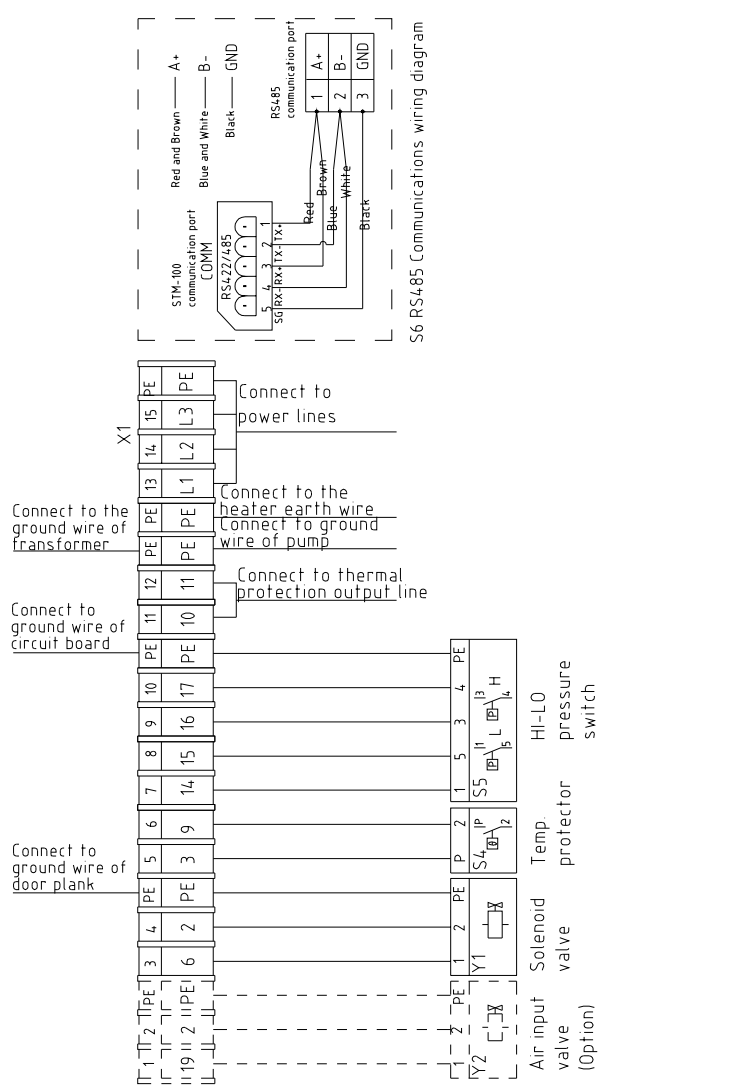


A

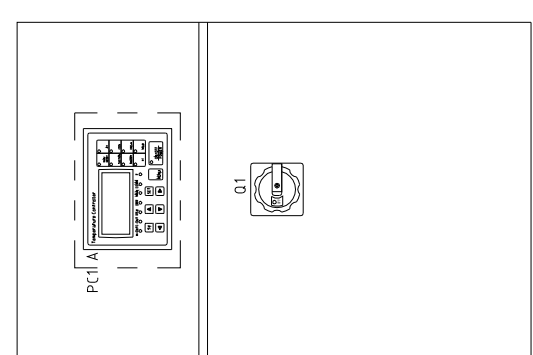
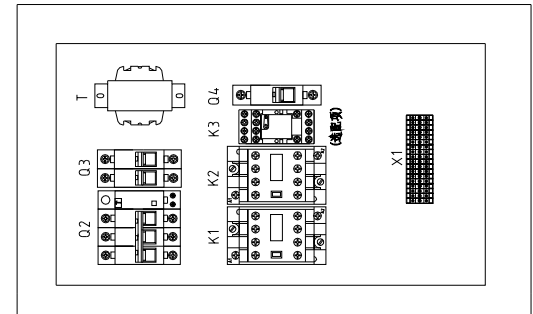
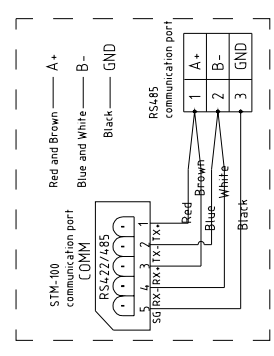
B

C

D



S6 RS485 Communications wiring diagram



STM-607W	版本	Ver.F
STM-607MW	版本	Ver.E
STM-607WA	版本	Ver.E

Technical requirements: Pump and pipe heater should be directly connected to the output terminals of contactor and thermal overload relay.

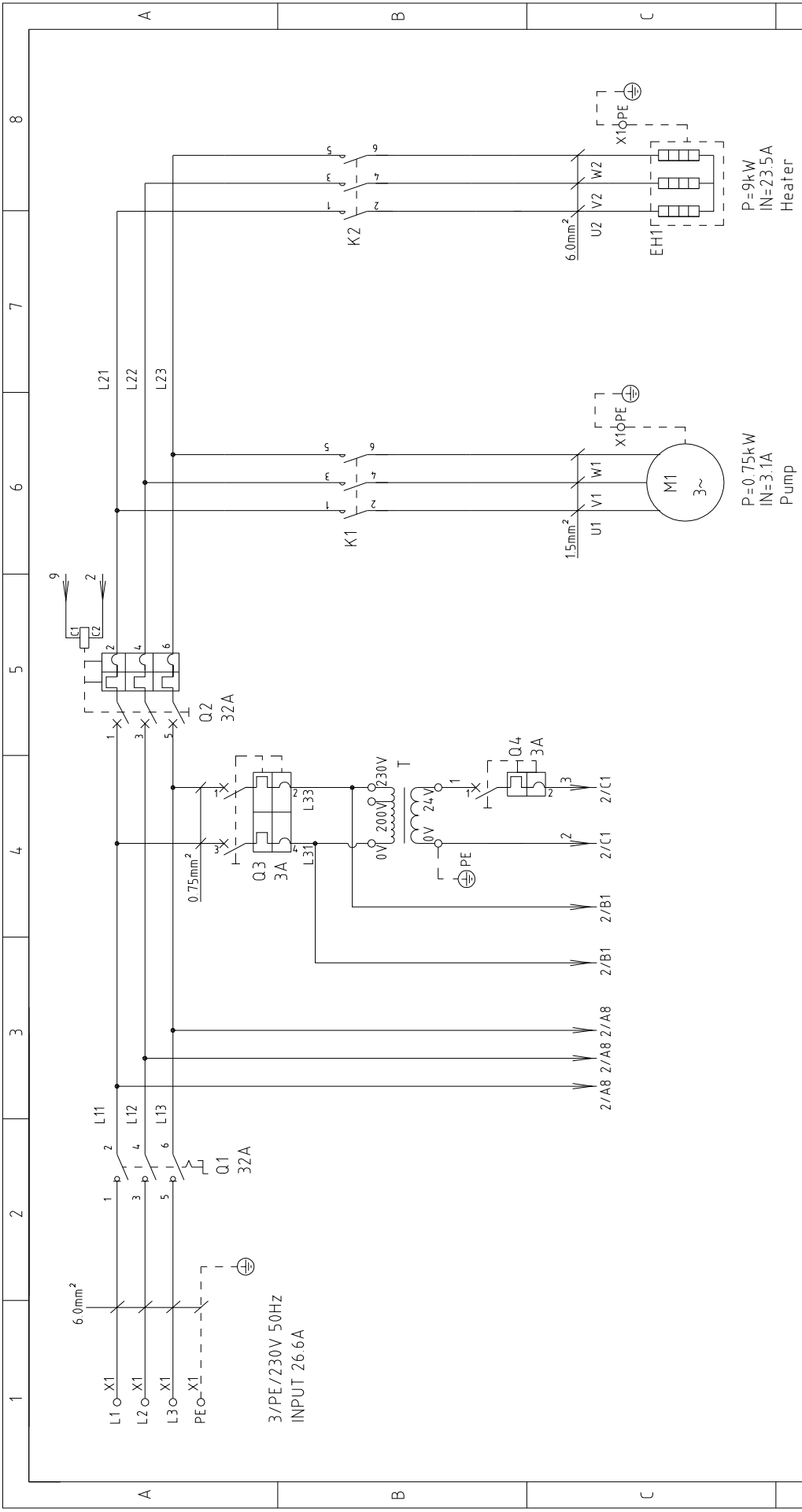
Mark	Before modification	After modification	Modified by	Modify date	Checked by	Proofread by	Designer	Drawer	Version	H	Title	STM-607W	Drawing NO	STM-607W-CE-230V-H-3	Scale	Standard	CE	Page	3	Totally	5	Pages	
				20180731					Approved by		Electrical Components Layout												
												Voltage		230V									
												Frequency		50HZ									



1	2		3	4	5	6	7	8	
NO.	Symbol	Name	Manufacturer	Type	Specification	Number	Material number	Remark	
1	Q1	Main power switch	EATON	P1-25/EA/SVB	25A	1	YE10125250000		
2	Q2	Circuit breakers	TECO	BM-63C/3025S	25A	1	YE40302503000		
3	Q3	Excitation release	TECO	MX	24VAC	1	YE40024000000	A	
4	Q4	Circuit breakers	TECO	BM-63C/2003S 2P	3A	1	YE40200203000		
5	Q4	Circuit breakers	TECO	BM-63C/1003S 1P	3A	1	YE40100203000		
6	K1	Contactors	SIEMENS	3RT6015-1AB01	24VAC	1	YE00601502500		
7	K2	Contactors	SIEMENS	3RT6025-1AC20	24VAC	1	YE00602502600		
8	K3	Middle relay	HONEYWELL	GR-2C-AC24V	24VAC	1	YE03022400300	(4)	
9	T	Transformer	JIUXIN	IN=230V/200V OUT=24VAC	80VA	1	YE70023005200		
10	S1	Thermocouple	SHINI	----	K	1	----	(1)	
11	S2 S3	Thermocouple	SHINI	----	K	2	----	(1)(2)	
12	S4	Overheat protector	----	----	----	1	----	(1)	
13	S5	HI-LO pressure switch	----	----	----	1	----	(1)	
14	S6	Communication interface board RS-485 (double Dsub-9pin connector)	YUYUN	----	PCS	1	YE90048501200		
15		Shell RS485(SAL-700G-A-19)0	BINGCHENG	----	PCS	1	YR40048500000		
16	PC1 A	Circuit board	HANYOUNGUX	STM100-21 (含通讯)	180~4.30V 50/60Hz	1	YE811844300200		
17	H1	Buzzer	JINGKANG	PK-35A	24VAC/DC	1	YE840035000600	(1)	
18	Y1	Solenoid valve	----	----	24VAC	1	----	(1)	
19	Y2	Solenoid valve	----	----	24VAC	1	----	(1)(4)	
20	X1	Terminal board	HONEYWELL	SK2.5	----	10	YE60002503200		
21		Terminal board	HONEYWELL	SK2.5PE	----	3	YE60002503400		
22		Terminal board	HONEYWELL	SK4	----	3	YE60000403200		
23		Terminal board	HONEYWELL	GK5PE	----	2	YE60000403500		
24		Terminal board	HONEYWELL	SK2.5	----	2	YE60002503200	(4)	
25		Terminal board	HONEYWELL	SK2.5PE	----	1	YE60002503400	(4)	
STM-607W 版本 Ver.F			STM-607W A 版本 Ver.E	Notes: (1)Means it's not the material inside the control box (2)Means equipped with function of displaying water outlet and return water temperature (3)Means equipped with magnetic pump (4)Means optional air-blowing cleaning function.					
D				Version	H	Title		Scale	
				Approved by	STM-607W		Standard	Page 4	
				Date	Electrical Components List 1		CE	Totally 5 Pages	
Mark				Before modification	Modified by	Modify date	Voltage	230V	
					20180731		Frequency	50HZ	



信易电热机械股份有限公司
Shini Plastics Technologies, Inc.

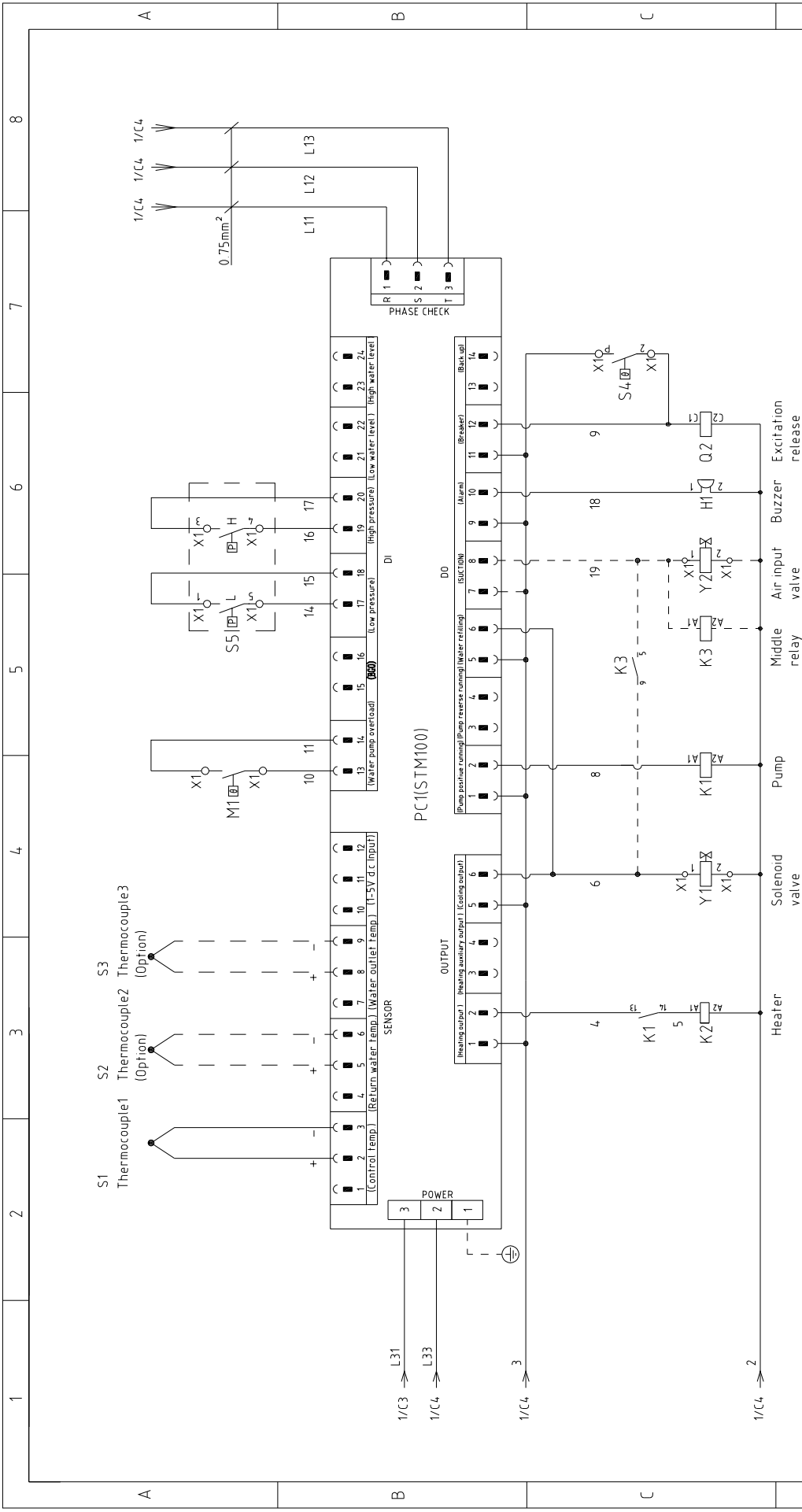


STM-910W	版本	Ver.F
STM-910MW	版本	Ver.E
STM-910WA	版本	Ver.E

When equipped with magnetic pump P=1.0KW IN=3.1A

D	Title	STM-910W	Scale	Page 1
		Main Circuit Diagram		Standard
Drawing NO		STM-910W-CE-230V-G-1	Voltage	
Version			Frequency	
Approved by			230V	
Date		20180731	50HZ	
Designer				
Proofread by				
Checked by				
Modify date				
After modification				
Before modification				
1	2	3	4	5
6	7	8	9	10





STM-910W	版本	Ver.F
STM-910MW	版本	Ver.E
STM-910WA	版本	Ver.E

Note: M1 is the overheat protection output contact of water pump.

Title		Drawing NO	
STM-910W		STM-910W-CE-230V-G-2	
Version		Scale	
Approved by		Standard	
Date		Voltage	
20180731		230V	
Checked by		Frequency	
2		50HZ	
Modified by		Page	
2		2	
Before modification		Totally	
2		5	
Mark		Pages	
1		8	

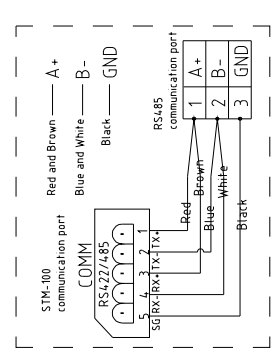
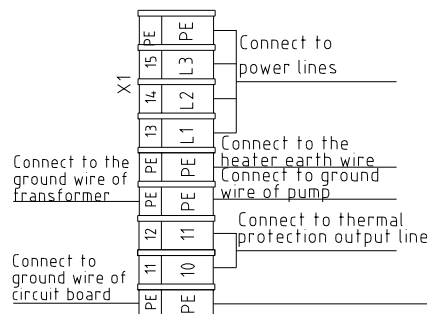
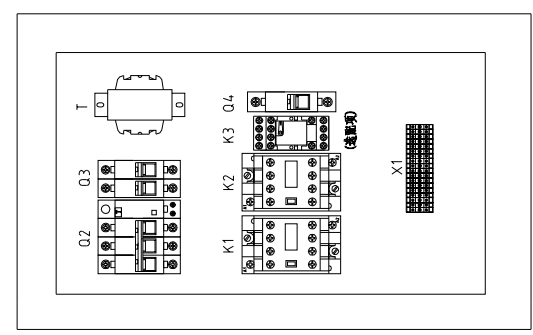


A

B

C

D




S6 RS485 Communications wiring diagram


STM-910W	版本	Ver.F
STM-910MW	版本	Ver.E
STM-910WA	版本	Ver.E

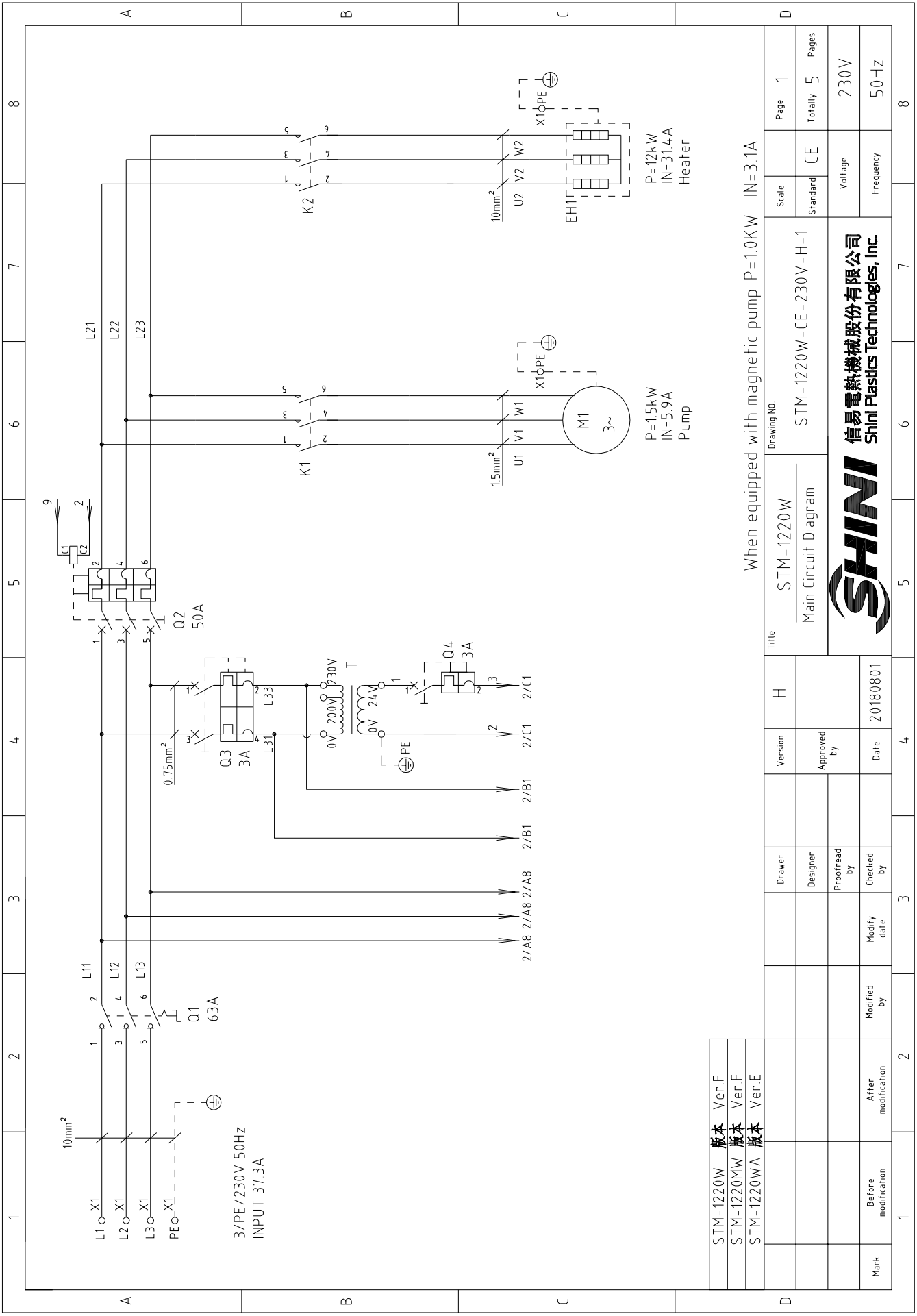
Technical requirements: Pump and pipe heater should be directly connected to the output terminals of contactor and thermal overload relay.

Mark	Before modification	After modification	Modified by	Date	Checked by	Proofread by	Designer	Drawer	Version	G	Title	STM-910W	Drawing NO	STM-910W-CE-230V-G-3	Scale	Standard	CE	Page	3					
				20180731					Approved by		Electrical Components Layout								Totally	5				
																				Pages	5			
																					Frequency	50HZ		
																						Voltage	230V	
																							Frequency	50HZ




1		2		3		4		5		6		7		8																																																																																																
NO.	Symbol	Name	Manufacturer	Type	Specification	Number	Material number	Remark																																																																																																						
1	Q1	Main power switch	EATON	P1-32/EA/SVB	32A	1	YE10323200000																																																																																																							
2	Q2	Circuit breakers	TECO	BM-63C/3032S	32A	1	YE40303203000																																																																																																							
3	Q3	Excitation release	TECO	MX	24VAC	1	YE40024000000																																																																																																							
4	Q4	Circuit breakers	TECO	BM-63C/2003S 2P	3A	1	YE40200203000																																																																																																							
5	Q4	Circuit breakers	TECO	BM-63C/1003S 1P	3A	1	YE40100203000																																																																																																							
6	K1	Contactors	SIEMENS	3RT6015-1AB01	24VAC	1	YE00601502500																																																																																																							
7	K2	Contactors	SIEMENS	3RT6027-1AC20	24VAC	1	YE00602702600																																																																																																							
8	K3	Middle relay	HONEYWELL	GR-2C-AC24V	24VAC	1	YE03022400300	(4)																																																																																																						
9	T	Transformer	JIUXIN	IN=230V/200V OUT=24VAC	80VA	1	YE70023005200																																																																																																							
10	S1	Thermocouple	SHINI	----	K	1	----	(1)																																																																																																						
11	S2 S3	Thermocouple	SHINI	----	K	2	----	(1)(2)																																																																																																						
12	S4	Overheat protector	----	----	----	1	----	(1)																																																																																																						
13	S5	HI-LO pressure switch	----	----	----	1	----	(1)																																																																																																						
14	S6	Communication interface board RS-485 (double Dsub-9pin connector)	YUYUN	----	PCS	1	YE90048501200																																																																																																							
15	PC1 A	Shell RS485(SAL-700G-A-1910)	BINCHENG	----	PCS	1	YR40048500000																																																																																																							
16	PC1 A	Circuit board	HANYOUNGUX	STM100-21 (含通讯)	180~4.30V 50/60Hz	1	YE81184300200																																																																																																							
17	H1	Buzzer	JINGKANG	PK-35A	24VAC/DC	1	YE840035000600	(1)																																																																																																						
18	Y1	Solenoid valve	----	----	24VAC	1	----																																																																																																							
19	Y2	Solenoid valve	----	----	24VAC	1	----	(1)(4)																																																																																																						
20	X1	Terminal board	HONEYWELL	SK2.5	----	10	YE60002503200																																																																																																							
21		Terminal board	HONEYWELL	SK2.5PE	----	3	YE60002503400																																																																																																							
22		Terminal board	HONEYWELL	GK6	----	3	YE60000603200																																																																																																							
23		Terminal board	HONEYWELL	GK6PE	----	2	YE60000603500																																																																																																							
24		Terminal board	HONEYWELL	SK2.5	----	2	YE60002503200	(4)																																																																																																						
25		Terminal board	HONEYWELL	SK2.5PE	----	1	YE60002503400	(4)																																																																																																						
STM-910W 版本 Ver.F STM-910MW 版本 Ver.E STM-910WA 版本 Ver.E Notes: (1)Means it's not the material inside the control box (2)Means equipped with function of displaying water outlet and return water temperature. (3)Means equipped with magnetic pump. (4)Means optional air-blowing cleaning function.																																																																																																														
<table border="1"> <tr> <td colspan="2">D</td> <td colspan="2">Title</td> <td colspan="2">Drawing NO</td> <td colspan="2">Scale</td> <td colspan="2">Page</td> <td colspan="2">4</td> <td colspan="2">4</td> <td colspan="2">8</td> </tr> <tr> <td colspan="2"></td> <td colspan="2">STM-910W</td> <td colspan="2">STM-910W-CE-230V-G-4</td> <td colspan="2">Standard</td> <td colspan="2">CE</td> <td colspan="2">Voltage</td> <td colspan="2">230V</td> <td colspan="2">Pages</td> </tr> <tr> <td colspan="2"></td> <td colspan="2">Electrical Components List 1</td> <td colspan="2"></td> <td colspan="2"></td> <td colspan="2">Totally</td> <td colspan="2">5</td> <td colspan="2">5</td> <td colspan="2">Pages</td> </tr> <tr> <td colspan="2">Mark</td> <td colspan="2">Before modification</td> <td colspan="2">Modified by</td> <td colspan="2">Modify date</td> <td colspan="2">Checked by</td> <td colspan="2">Date</td> <td colspan="2">20180731</td> <td colspan="2"></td> </tr> <tr> <td colspan="2"></td> <td colspan="2"></td> <td colspan="2"></td> <td colspan="2"></td> <td colspan="2">Approved by</td> <td colspan="2"></td> <td colspan="2"></td> <td colspan="2"></td> </tr> <tr> <td colspan="2"></td> <td colspan="2"></td> <td colspan="2"></td> <td colspan="2"></td> <td colspan="2">Version</td> <td colspan="2">G</td> <td colspan="2"></td> <td colspan="2"></td> </tr> </table>															D		Title		Drawing NO		Scale		Page		4		4		8				STM-910W		STM-910W-CE-230V-G-4		Standard		CE		Voltage		230V		Pages				Electrical Components List 1						Totally		5		5		Pages		Mark		Before modification		Modified by		Modify date		Checked by		Date		20180731												Approved by																Version		G					
D		Title		Drawing NO		Scale		Page		4		4		8																																																																																																
		STM-910W		STM-910W-CE-230V-G-4		Standard		CE		Voltage		230V		Pages																																																																																																
		Electrical Components List 1						Totally		5		5		Pages																																																																																																
Mark		Before modification		Modified by		Modify date		Checked by		Date		20180731																																																																																																		
								Approved by																																																																																																						
								Version		G																																																																																																				
 <p>信易电热机械股份有限公司 Shini Plastics Technologies, Inc.</p>																																																																																																														

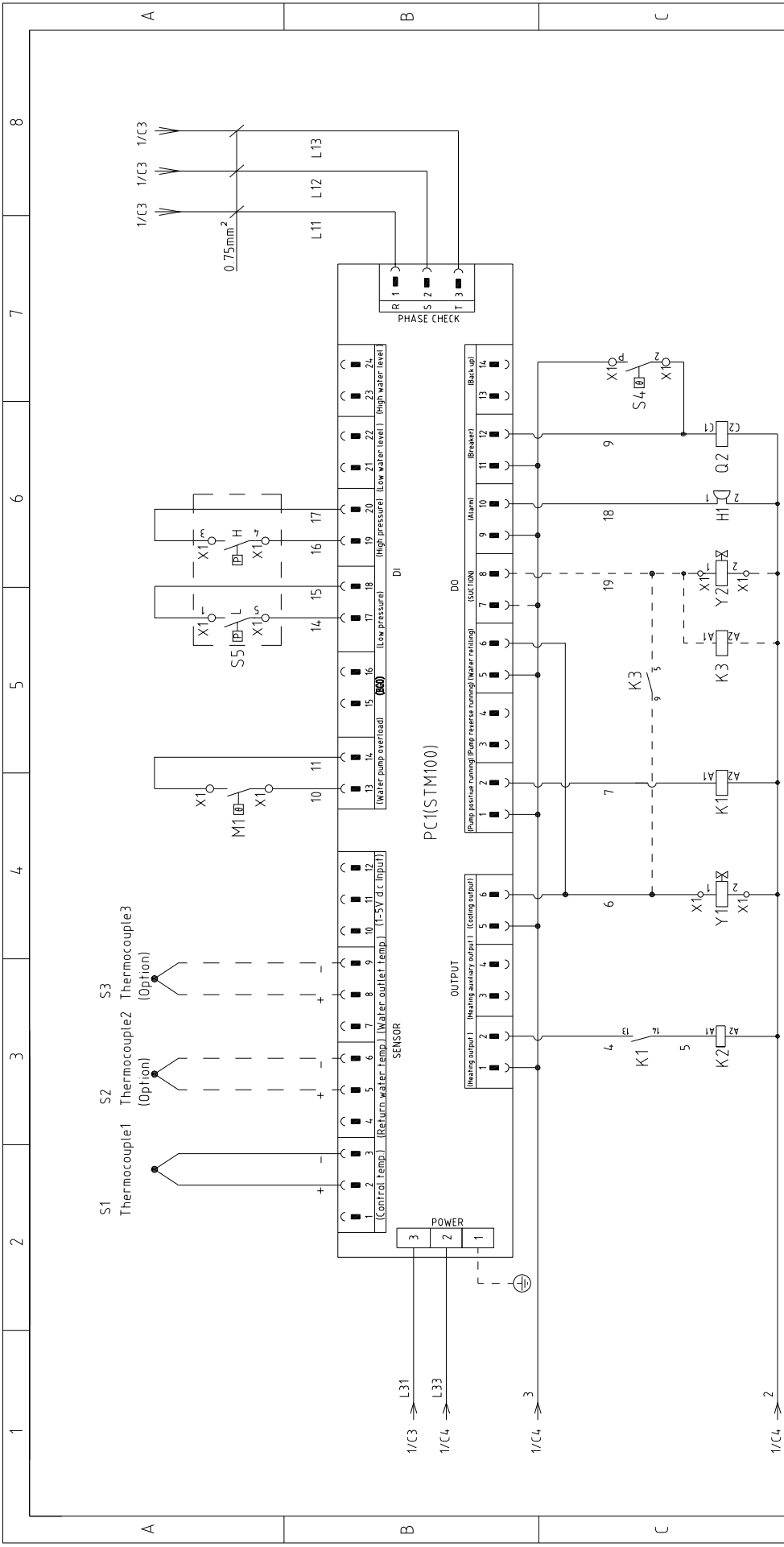
1		2		3		4		5		6		7		8	
NO.	Symbol	Name	Manufacturer	Type	Specification	Number	Material number	Remark							
26	M1	Motor	SHINI	TP-75	230V 50Hz 0.75kW	1	----	(1)							
27	M1	Motor	SHINI	MP-100	230V 50Hz 1.0kW	1	----	(1)(3)							
28	EH	Heater	SHINI	----	230V 50Hz 9kW	1	----	(1)							
29		Terminal fittings E/GKseries(honeywell)	HONEYWELL	----	PCS	6	YE60000003900								
A															
B															
C															
D															
Notes: (1)Means it's not the material inside the control box (2)Means equipped with function of displaying water outlet and return water temperature (3)Means equipped with magnetic pump (4)Means optional air-blowing cleaning function.															
STM-910W 版本 Ver.F		STM-910MW 版本 Ver.E		STM-910WA 版本 Ver.E		Title		Drawing NO		Scale		Page		5	
						STM-910W		STM-910W-CE-230V-G-5		Standard		CE		Totally 5	
						Electrical Components List 2				Voltage		230V			
Mark		Before modification		Modified by		Date		20180731		Frequency		50HZ			
 信易電熱機械股份有限公司 Shini Plastics Technologies, Inc.															



STM-1220W	版本	Ver.F
STM-1220MW	版本	Ver.F
STM-1220WA	版本	Ver.E

When equipped with magnetic pump P=1.0KW IN=3.1A

D	Title	STM-1220W		Drawing NO	STM-1220W-CE-230V-H-1		Scale	Page	1
		Main Circuit Diagram			Standard	CE		Totally	5
Mark	Before modification	Modified by	Modify date	Date	20180801	Approved by	Version	H	Drawer
	After modification	Modified by	Modify date						
									
信易电热机械股份有限公司 Shini Plastics Technologies, Inc.									
电压 230V 频率 50HZ									



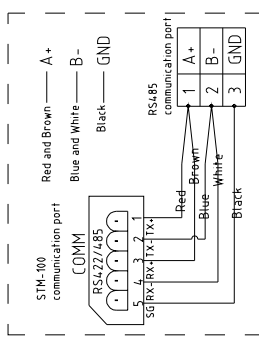
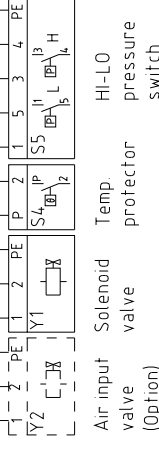
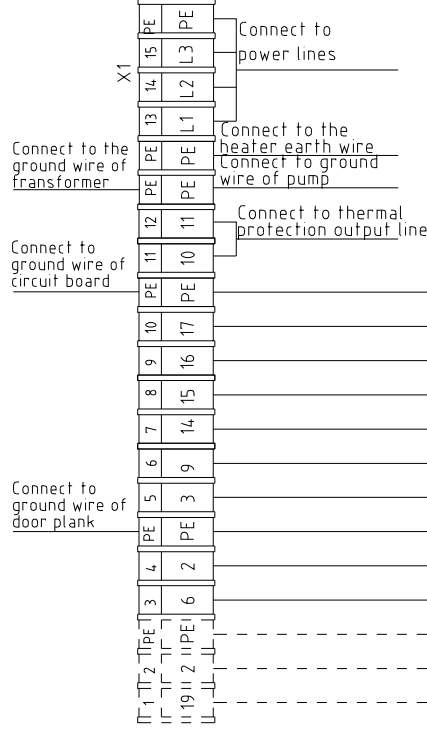
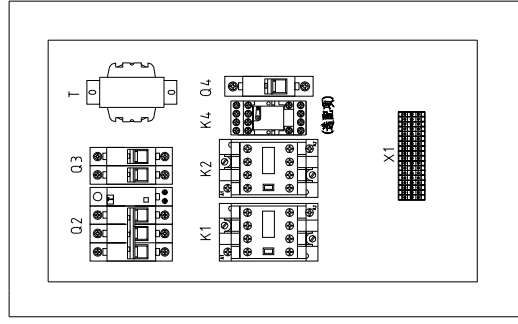
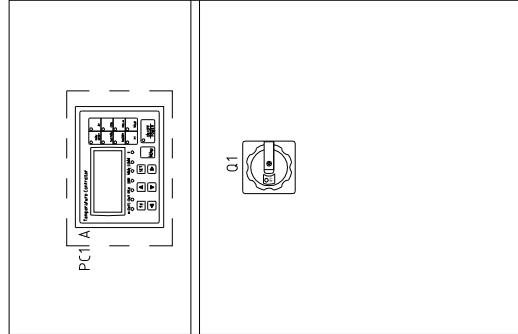
STM-1220W	版本	Ver.F
STM-1220MW	版本	Ver.F
STM-1220WA	版本	Ver.E

Note: M1 is the overheat protection output contact of water pump.

Title		Drawing NO	
STM-1220W		STM-1220W-CE-230V-H-2	
Version		Scale	
H		Standard	
Approved by		CE	
Designer		Voltage	
Proofread by		230V	
Checked by		Frequency	
Date		50HZ	
20180801		Page	
2		2	
3		Totally	
4		5	
5		Pages	
6		8	
7		8	
8		8	



A



S6 RS485 Communications wiring diagram


C

STM-1220W	版本 Ver.F
STM-1220MW	版本 Ver.F
STM-1220WA	版本 Ver.E

Technical requirements: Pump and pipe heater should be directly connected to the output terminals of contactor and thermal overload relay.

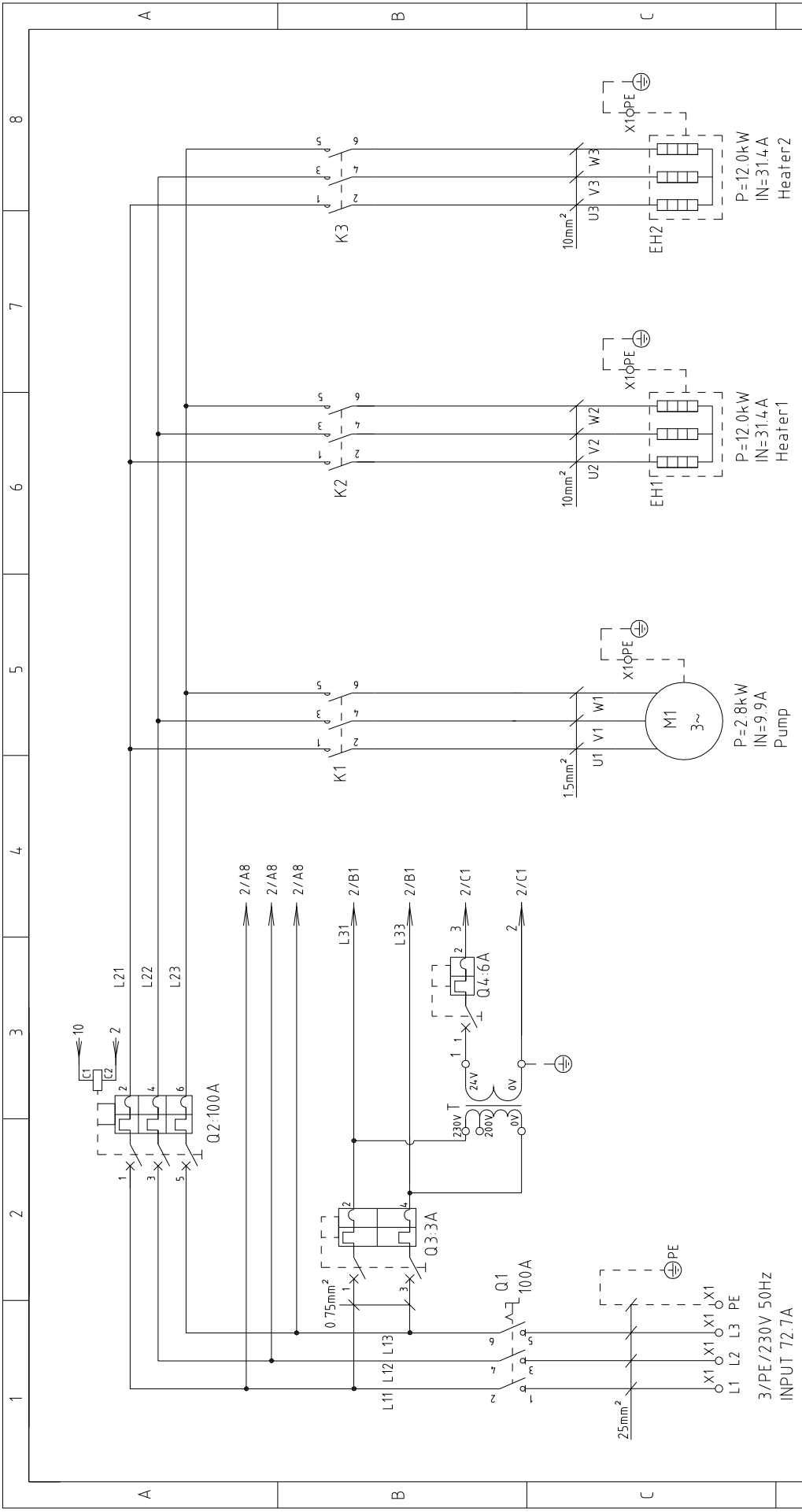
D	Version	H	Title	STM-1220W		Scale	Page	3
	Approved by		Electrical Components Layout	Drawing NO		Standard	Totally	5
Mark	Modified by		Date	20180801		Voltage	230V	
	After modification					Frequency	50HZ	



1		2		3		4		5		6		7		8	
NO.	Symbol	Name	Manufacturer	Type	Specification	Number	Material number	Remark							
1	Q1	Main power switch	EATON	P3-63/EA/SVB	63A	1	YE10636300000								
2	Q2	Circuit breakers	TECO	BM-63C/3050S	50A	1	YE40305003000								
3	Q3	Excitation release	TECO	MX	24VAC	1	YE40024000000								
4	Q4	Circuit breakers	TECO	BM-63C/2003S 2P	3A	1	YE40200203000								
5	Q4	Circuit breakers	TECO	BM-63C/1003S 1P	3A	1	YE40100203000								
6	K1	Contactors	SIEMENS	3RT6015-1AB01	24VAC	1	YE00601502500								
7	K2	Contactors	SIEMENS	3RT6028-1AC20	24VAC	1	YE00602802600								
8	K3	Middle relay	HONEYWELL	GR-2C-AC24V	24VAC	1	YE03022400300	(4)							
9	T	Transformer	JIUXIN	IN=230V/200V OUT=24V	80VA	1	YE70023005200								
10	PC1 A	Circuit board	HANYOUNGNUX	STM100-21 (含通讯)	180~430V 50/60Hz	1	YE81184300200								
11	S1	Thermocouple	SHINI	----	----	1	----	(1)							
12	S2 S3	Thermocouple	SHINI	----	----	2	----	(1)(2)							
13	S4	Overheat protector	----	----	----	1	----	(1)							
14	S5	HI-LO pressure switch	----	----	----	1	----	(1)							
15	S6	Communication interface board RS-485 (double Dsub-9pin connector)	YUYUN	----	PCS	1	YE90048501200								
16		Shell RS485(SAL-700G-A-19)0	BINCHEG	----	PCS	1	YR40048500000								
17	H1	Buzzer	JINGKANG	PK-35A	24VAC/DC	1	YE84003500600	(1)							
18	Y1	Solenoid valve	----	----	24VAC	1	----	(1)							
19	Y2	Solenoid valve	----	----	24VAC	1	----	(1)(4)							
20	X1	Terminal board	HONEYWELL	SK2.5	----	10	YE60002503200								
21		Terminal board	HONEYWELL	SK2.5PE	----	3	YE60002503400								
22		Terminal board	HONEYWELL	GK10	----	3	YE60001003200								
23		Terminal board	HONEYWELL	GK10PE	----	2	YE60001003500								
24		Terminal board	HONEYWELL	SK2.5	----	2	YE60002503200	(4)							
25		Terminal board	HONEYWELL	SK2.5PE	----	1	YE60002503400	(4)							
STM-1220W 版本 Ver F STM-1220MW 版本 Ver F STM-1220WA 版本 Ver E Notes: (1)Means it's not the material inside the control box (2)Means equipped with function of displaying water outlet and return water temperature (3)Means equipped with magnetic pump (4)Means optional air-blowing cleaning function.															
D				Drawer		Version	H	Title		Drawing NO		Scale	Page	4	
				Designer		Approved by		STM-1220W		STM-1220W-CE-230V-H-4		Standard	CE	Totally	
				Proofread by		Date	20180801	Electrical Components List 1				Voltage	230V	5	
Mark		Before modification	Modified by	Modify date				 信易电热机械股份有限公司 Shini Plastics Technologies, Inc.				Frequency	50HZ	8	

1	2	3	4	5	6	7	8	
NO.	Symbol	Name	Manufacturer	Type	Specification	Number	Material number	Remark
26	M1	Motor	SHINI	TP-150	230V 50Hz 15kW	1	----	(1)
27	M1	Motor	SHINI	MP-100	230V 50Hz 1.0kW	1	----	(1)(3)
28	EH	Heater	SHINI	----	230V 50Hz 12kW	1	----	(1)
29		Terminal fittings E/GKseries(honeywell)	HONEYWELL	----	PCS	6	YE60000003900	
A								
B								
C								
D								
STM-1220W 版本 Ver.F			STM-1220MW 版本 Ver.F			STM-1220WA 版本 Ver.E		
Notes: (1)Means it's not the material inside the control box (2)Means equipped with function of displaying water outlet and return water temperature. (3)Means equipped with magnetic pump. (4)Means optional air-blowing cleaning function.								
Title			Drawing NO			Scale		
STM-1220W			STM-1220W			STM-1220W-CE-230V-H-5		
Electrical Components List 2			Approved by			Standard		
H			Version			Page		
Date			Checked by			Voltage		
20180801			Modify date			Frequency		
After modification			Modified by			Totally		
Before modification			Modified date			Pages		
Mark			Date			5		
2			3			5		
1			4			8		

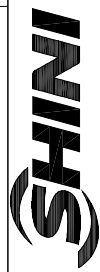




STM-2440W	版本	Ver.F
STM-2440MW	版本	Ver.F
STM-2440WA	版本	Ver.E

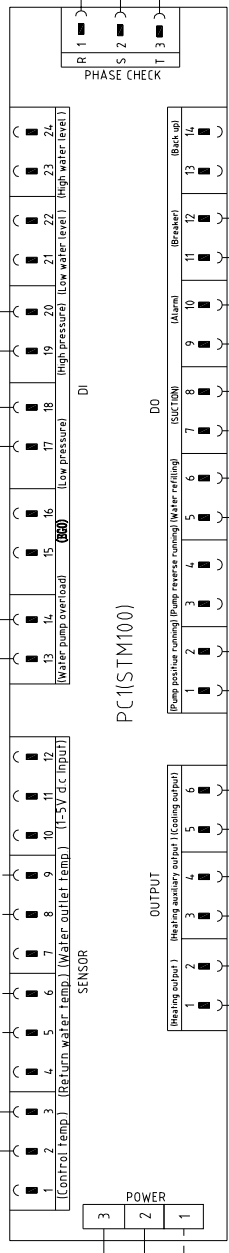
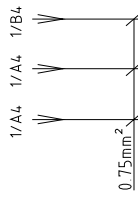
When equipped with magnetic pump P=2.8KW IN=11.3A

Title		Drawing NO		Page	1
Version		STM-2440W		Totally	5
H		Main Circuit Diagram		Standard	CE
Designer		STM-2440W-CE-230V-H-1		Voltage	230V
Proofread by				Frequency	50HZ
Checked by		20180801			
Modified by					
Mark		Before modification			
		After modification			



信易电热机械股份有限公司
Shini Plastics Technologies, Inc.

S1 Thermocouple1
 S2 Thermocouple2 (Option)
 S3 Thermocouple3 (Option)



PC1(STM100)

STM-2440W	版本	Ver.F
STM-2440MW	版本	Ver.F
STM-2440WA	版本	Ver.E

Note: M1 is the overheat protection output contact of water pump.

Title		Drawing NO	
STM-2440W		STM-2440W-CE-230V-H-2	
Version		Scale	
H		Standard	
Designer		CE	
Proofread by		Voltage	
Checked by		Frequency	
Modified by		230V	
Modify date		50HZ	
Date		Page	
20180801		2	
Approved by		Totally	
20180801		5	
Date		Pages	
20180801		8	



1		2		3		4		5		6		7		8	
NO.	Symbol	Name	Manufacturer	Type	Specification	Number	Material number	Remark							
1	Q1	Main power switch	EATON	P3-100/EA/SVB	100A	1	YE10010000000								
2	Q2	Circuit breaker	TECO	BM-100D/3100S	100A	1	YE40310003000								
3	Q3	Release	TECO	MX	24VAC	1	YE40024000000								
4	Q4	Circuit breakers	TECO	BM-63C/2003S 2P	3A	1	YE40200203000								
5	Q4	Circuit breakers	TECO	BM-63C/1006S 1P	6A	1	YE40100600100								
6	K1	Contactors	SIEMENS	3RT6017-1AB01	24VAC	1	YE00601702500	STM-2440W							
7	K1	Contactors	SIEMENS	3RT6018-1AB01	24VAC	1	YE00601802500	STM-2440MW							
8	K2 K3	Contactors	SIEMENS	3RT6028-1AC20	24VAC	2	YE00602802600								
9	K4	Middle relay	HONEYWELL	GR-2C-AC24V	24VAC	1	YE03022400300	(4)							
10	T	Transformer	JIUXIN	IN=230/200V OUT=24VAC	120VA	1	YE70023004500								
11	S1	Thermocouple	SHINI	----	----	1	----	(1)							
12	S2 S3	Thermocouple	SHINI	----	----	2	----	(1)(2)							
13	S4	Overheat protector	----	----	----	1	----	(1)							
14	S5	HI-LO pressure switch	----	----	----	1	----	(1)							
15	S6	Communication interface board RS-485 (double Dsub-9pin connector)	YUYUN	----	PCS	1	YE90048501200								
16		Shell RS485(SAL-700G-A-19)0	BINCHEG	----	PCS	1	YR40048500000								
17	PC1 A	Circuit board	HANYOUNGUX	STM100-21 (含通讯)	180-4.30V 50/60Hz	1	YE81184.300200								
18	H1	Buzzer	JINGKANG	PK-35A	24VAC/DC	1	YE84.003500600								
19	Y1	Solenoid valve	----	----	24VAC	1	----	(1)							
20	Y2	Solenoid valve	----	----	24VAC	1	----	(1)(4)							
21	X1	Terminal board	HONEYWELL	SK2.5	----	10	YE60002503200								
22		Terminal board	HONEYWELL	SK2.5PE	----	3	YE60002503400								
23		Terminal board	HONEYWELL	GK10PE	----	2	YE60001003500								
24		Terminal board	HONEYWELL	GK35	----	3	YE60003503200								
25		Terminal board	HONEYWELL	GK35PE	----	1	YE60003503500								
STM-2440W 版本 Ver.F		STM-2440MW 版本 Ver.F		STM-2440WA 版本 Ver.E		STM-2440W-H-4		Notes: (1)Means it's not the material inside the control box.(2)Means equipped with function of displaying water outlet and return water temperature.(3)Means equipped with magnetic pump.(4)Means optional air-blowing cleaning function.							
		Designer		Version		F		Title		Drawing NO		Scale		Page	
		Proofread by		Approved by		Electrical Components List 1		STM-2440W		STM-2440W-CE-230V-H-4		Standard		CE	
		Checked by		Date		20180801		SHINI		信易电热机械股份有限公司 Shini Plastics Technologies, Inc.		Voltage		230V	
Mark		Before modification		Modified by		Modify date						Frequency		50HZ	
1		2		3		4		5		6		7		8	

1	2		3	4	5	6	7	8
NO.	Symbol	Name	Manufacturer	Type	Specification	Number	Material number	Remark
26		Terminal board	HONEYWELL	SK2.5	----	2	YE60002503200	(4)
27		Terminal board	HONEYWELL	SK2.5PE	----	1	YE60002503400	(4)
28	M1	Motor	SHINI	TP-280	230V 50Hz 2.8kW	1	----	(1)
29	M1	Motor	SHINI	MP-280	230V 50Hz 2.8kW	1	----	(1)(3)
30	EH1 EH2	Heater	SHINI	----	230V 50Hz 12kW	2	----	(1)
31		Terminal fittings E/GKseries(honeywell)	HONEYWELL	----	PCS	6	YE60000003900	
A								
B								
C								
D								
STM-2440W 版本 Ver.F			STM-2440Mw 版本 Ver.F		STM-2440WA 版本 Ver.E		Notes: (1)Means it's not the material inside the control box.(2)Means equipped with function of displaying water outlet and return water temperature.(3)Means equipped with magnetic pump.(4)Means optional air-blowing cleaning function.	
Title			Version		Drawing NO		Scale	
STM-2440W			H		STM-2440W		Standard	
Electrical Components List 2			Approved by		STM-2440W-CE-230V-H-5		Page 5	
SHINI			Date		Voltage		Totally 5 Pages	
SHINI 信易电热机械股份有限公司			20180801		Frequency		50HZ	
SHINI Shini Plastics Technologies, Inc.								
1	2		3	4	5	6	7	8