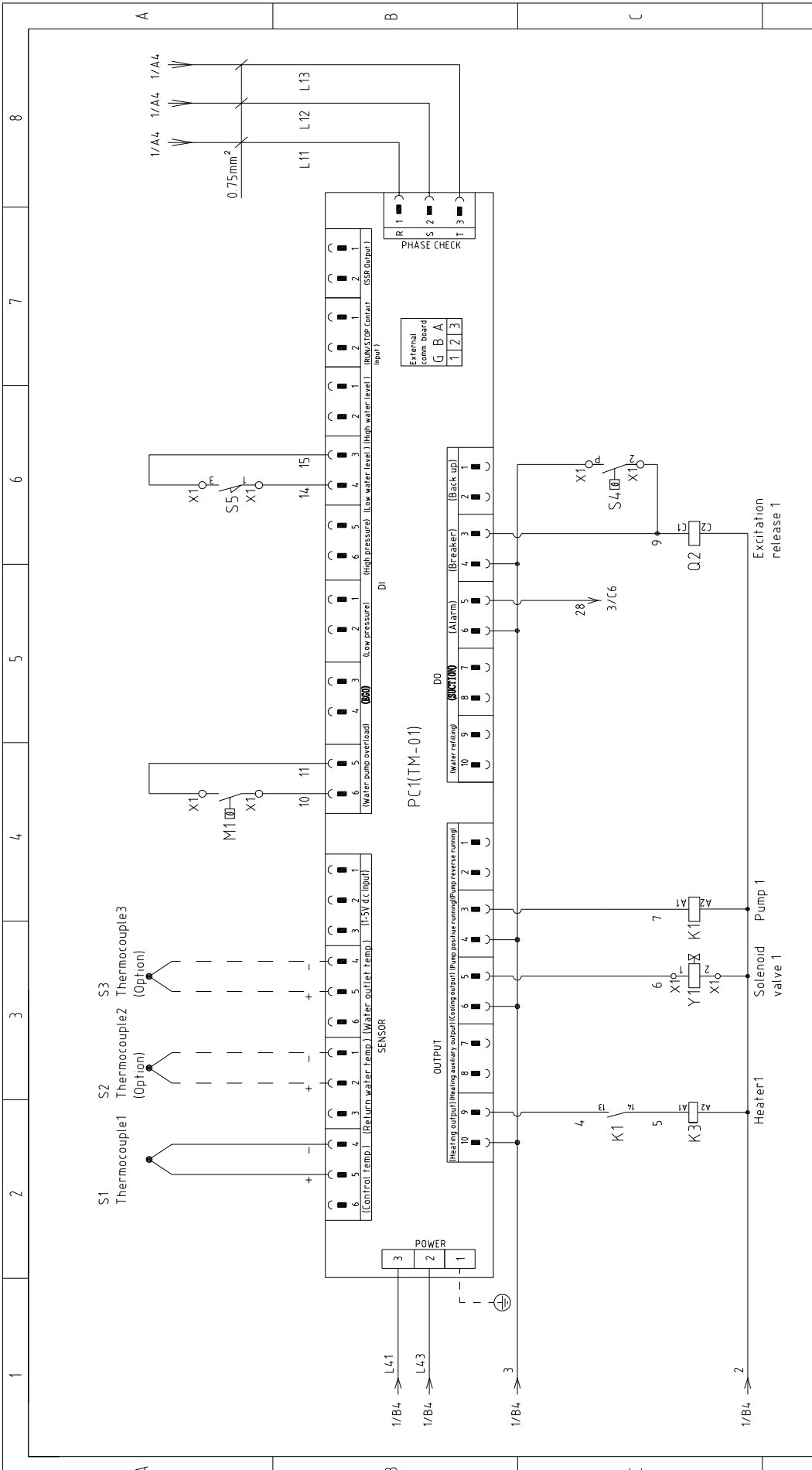


版本 Ver.G

D	Mark	Before modification	After modification	Modified by	Modify date	Checked by	Proofread by	Designer	Drawer	Version	H	Title		Drawing NO		Scale	Page	1					
	Approved by	Date		20180724								STM-607-D Main Circuit Diagram		STM-607-D-CE-230V-H-1		Standard	CE	Totally	6				
																				Pages	230V	50HZ	



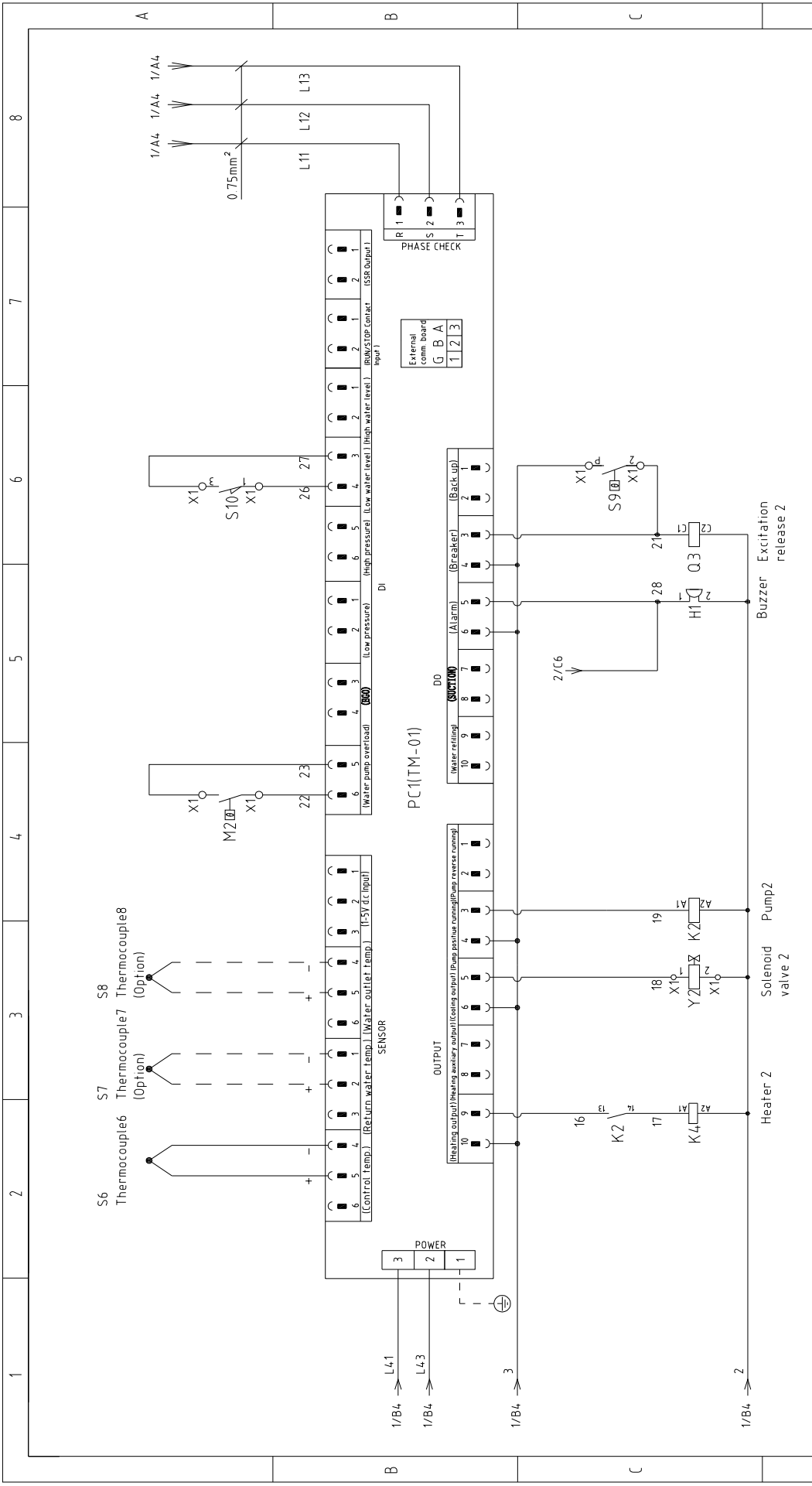


版本	Ver.G
----	-------

Note: M1 is the overheat protection output contact of water pump 1.

Mark	Before modification	Modified by	Modify date	Checked by	Date	Version	H	Title	STM-607-D	Drawing NO	STM-607-D-CE-230V-H-2	Scale	Standard	Page	2
	After modification				20180724		Approved by				Control Circuit Diagram 1		CE		Totally
												Voltage	230V		
												Frequency	50HZ		



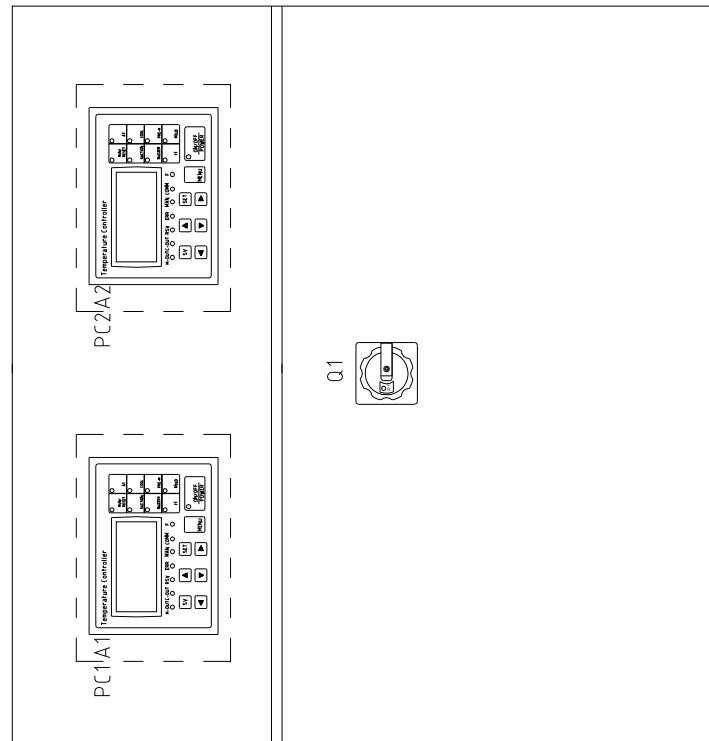
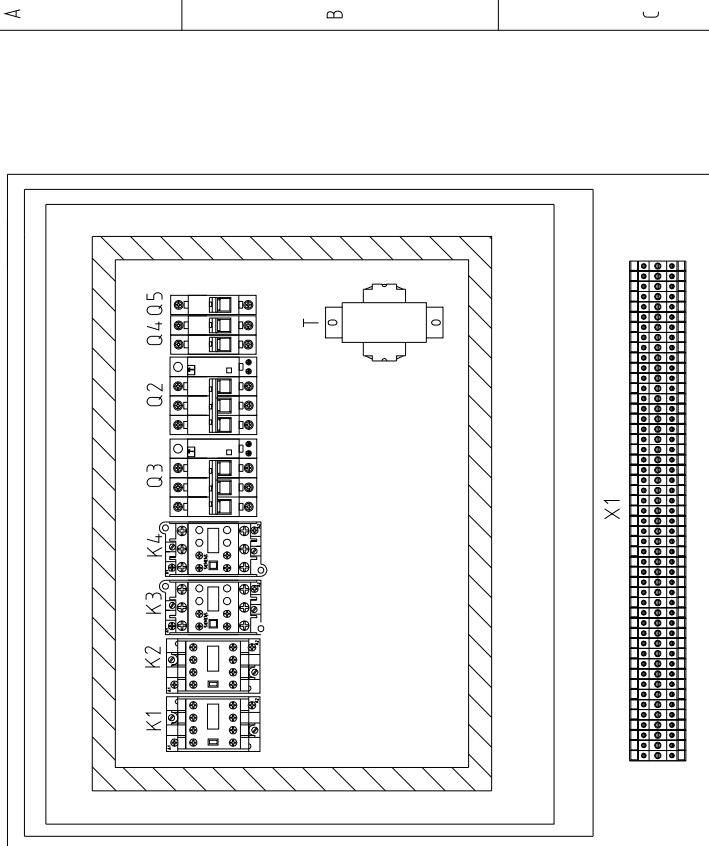


版本 Ver.G Note: M2 is the overheat protection output contact of water pump 2.

D	Scale	Standard	CE	Page	3
	Drawing NO		STM-607-D-CE-230V-H-3	Totally	6
Title		STM-607-D	Control Circuit Diagram 2		
Version		H	Approved By		
Designer			Proofread by		
Modified by			Checked by		
After modification			Date		
Before modification			Date		
Mark					
Voltage		230V			
Frequency		50Hz			
Standard		CE			
Page		3			
Totally		6			
Pages		6			

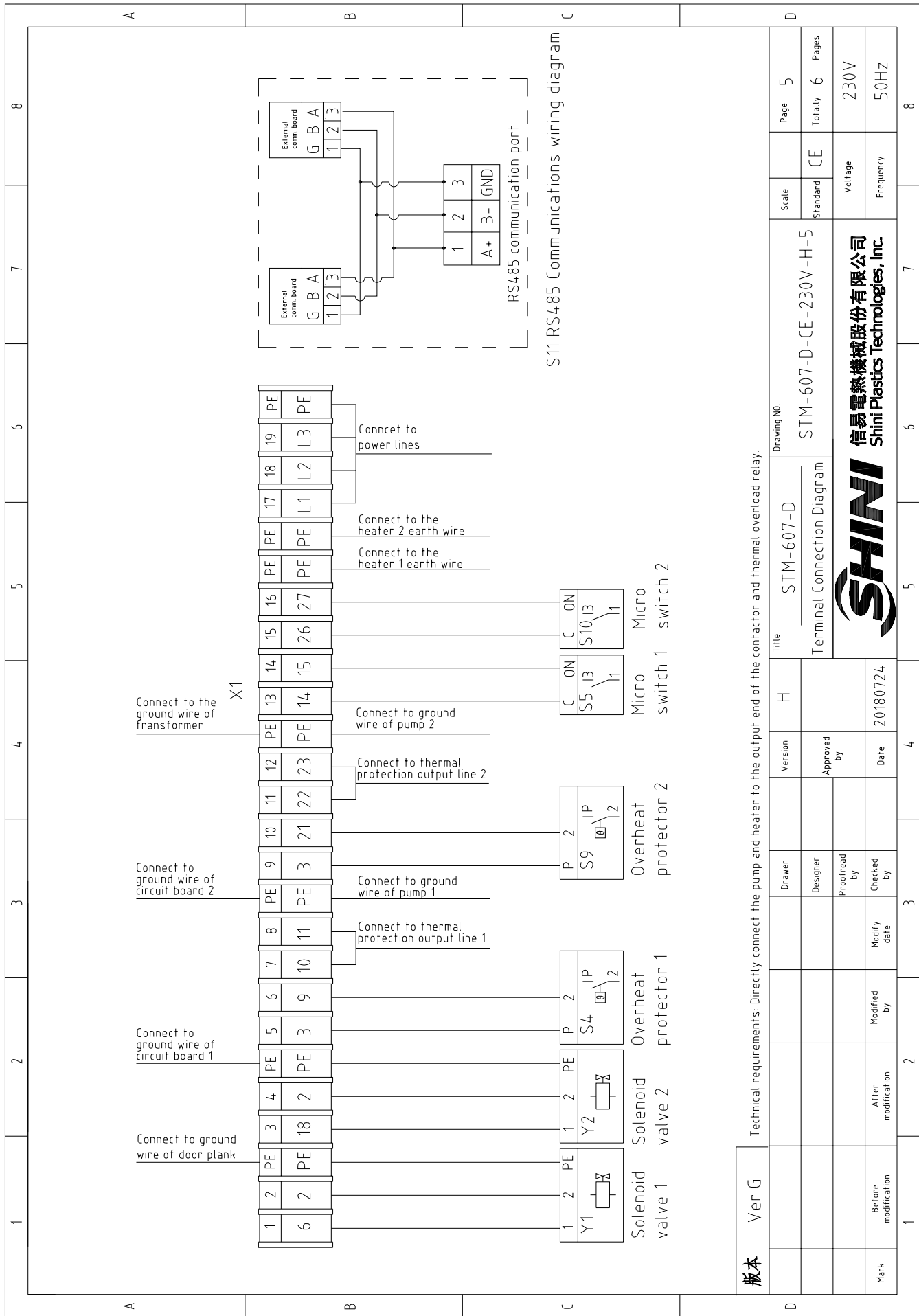


1 2 3 4 5 6 7 8



版本 Ver.G

D	Title		Drawing No		Scale	Page
	STM-607-D		STM-607-D-CE-230V-H-4		Standard	4
Electrical Components Layout				CE	Totally	6
				Voltage	230V	
				Frequency	50HZ	
SHINI		SHINI		信易電熱機械股份有限公司		
SHINI		SHINI		Shini Plastics Technologies, Inc.		
Ver.G		Version	H	Date		8
		Approved by		20180724		
		Designer				
		Proofread by				
		Checked by				
		Modify date				
		After modification				
		Before modification				



S11 RS485 Communications wiring diagram

版本

Ver.G			
Mark	Before modification	Modified by	Modify date
			20180724
	Designer	Proofread by	Checked by
	Version	Approved by	Date

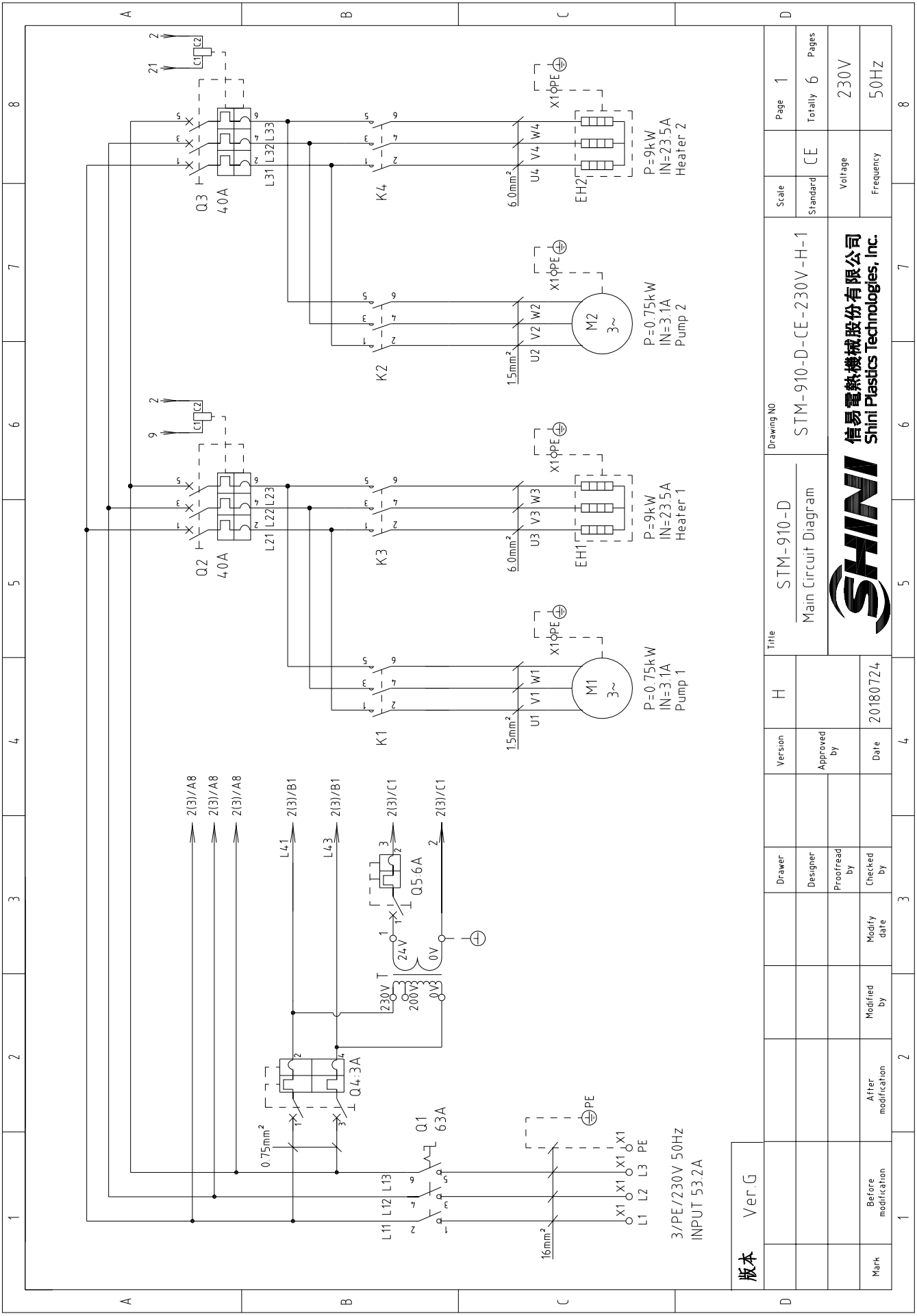
Technical requirements: Directly connect the pump and heater to the output end of the contactor and thermal overload relay.

Drawing NO	STM-607-D		
Title	Terminal Connection Diagram		
Scale	Standard	CE	Page 5
			Totally 6 Pages
	Voltage		230V
	Frequency		50Hz



1	2		3	4	5	6	7	8
NO.	Symbol	Name	Manufacturer	Type	Specification	Number	Material number	Remark
1	Q1	Main power switch	EATON	P3-63/EA/SVB	63A	1	YE10636300000	
2	Q2 Q3	Circuit breakers	TECO	BM-63C/3025S	25A	2	YE40302503000	
3	A	Excitation release	TECO	MX	24VAC	2	YE40024000000	
4	Q4	Circuit breakers	TECO	BM-63C/2003S 2P	3A	1	YE40200203000	
5	Q5	Circuit breakers	TECO	BM-63C/1006S 1P	6A	1	YE40100600100	
6	K1 K2	Contactors	SIEMENS	3RT6015-1AB01	24VAC	2	YE00601502500	
7	K3 K4	Contactors	SIEMENS	3RT6026-1AC20	24VAC	2	YE00602602600	
8	S1 S6	Thermocouple	SHINI	K	----	2	----	(1)
9	S2 S3 S7 S8	Thermocouple	SHINI	K	----	4	----	(2)
10	S4 S9	Overheat protector	----	----	----	2	----	(1)
11	S5 S10	Micro switch	RENEW	----	----	2	----	(1)
12	S11	Communication interface board RS-485 (double Dsub-9pin connector)	YUYUN	----	PCS	1	YE90048501200	
13	B	Shell RS485(SAL-700G-A-19)0	BINCHEG	----	PCS	1	YR40048500000	
14	T	Transformer	JIUXIN	IN=230/200V OUT=24VAC	120VA	1	YE70023004500	
15	PC1 PC2 A1 A2	Circuit board	YUYUN	TM-01 (含通讯)	180~430V 50/60Hz	2	YE81012200300	
16	Y1 Y2	Solenoid valve	----	----	24VAC	2	----	(1)
17	X1	Terminal board	HONEYWELL	SK2.5	----	16	YE60002503200	
18	C	Terminal board	HONEYWELL	SK2.5PE	----	4	YE60002503400	
19		Terminal board	HONEYWELL	GK5PE	----	2	YE60000403500	
20		Terminal board	HONEYWELL	GK10	----	3	YE60001003200	
21		Terminal board	HONEYWELL	GK10PE	----	1	YE60001003500	
22	M1 M2	Motor	SHINI	TP-55	230V 50Hz 0.55kW	2	----	(1)
23	EH1 EH2	Heater	SHINI	----	230V 50/60Hz 6kW	2	----	(1)
24	H1	Buzzer	JINGKANG	PK-35A	24VAC/DC	1	YE84003500600	
25		Terminal fittings E/GKseries(honeywell)	HONEYWELL	----	PCS	6	YE60000003900	
版本								
Notes: (1)Means it's not the material inside the control box (2)Means equipped with function of displaying water outlet and return water temperature.								
Ver.G		Drawer		Version	Title		Drawing NO	
		Designer		Approved by	STM-607-D		STM-607-D-CE-230V-H-6	
		Proofread by			Electrical Components List		Scale	
		Checked by		Date			Standard	
Mark		After modification		Modify date			Voltage	
Before modification				20180724			Frequency	
1		2		3	4		5	
							6	
							7	
							8	
							Page 6	
							Totally 6	
							Pages 6	
							CE	
							230V	
							50HZ	

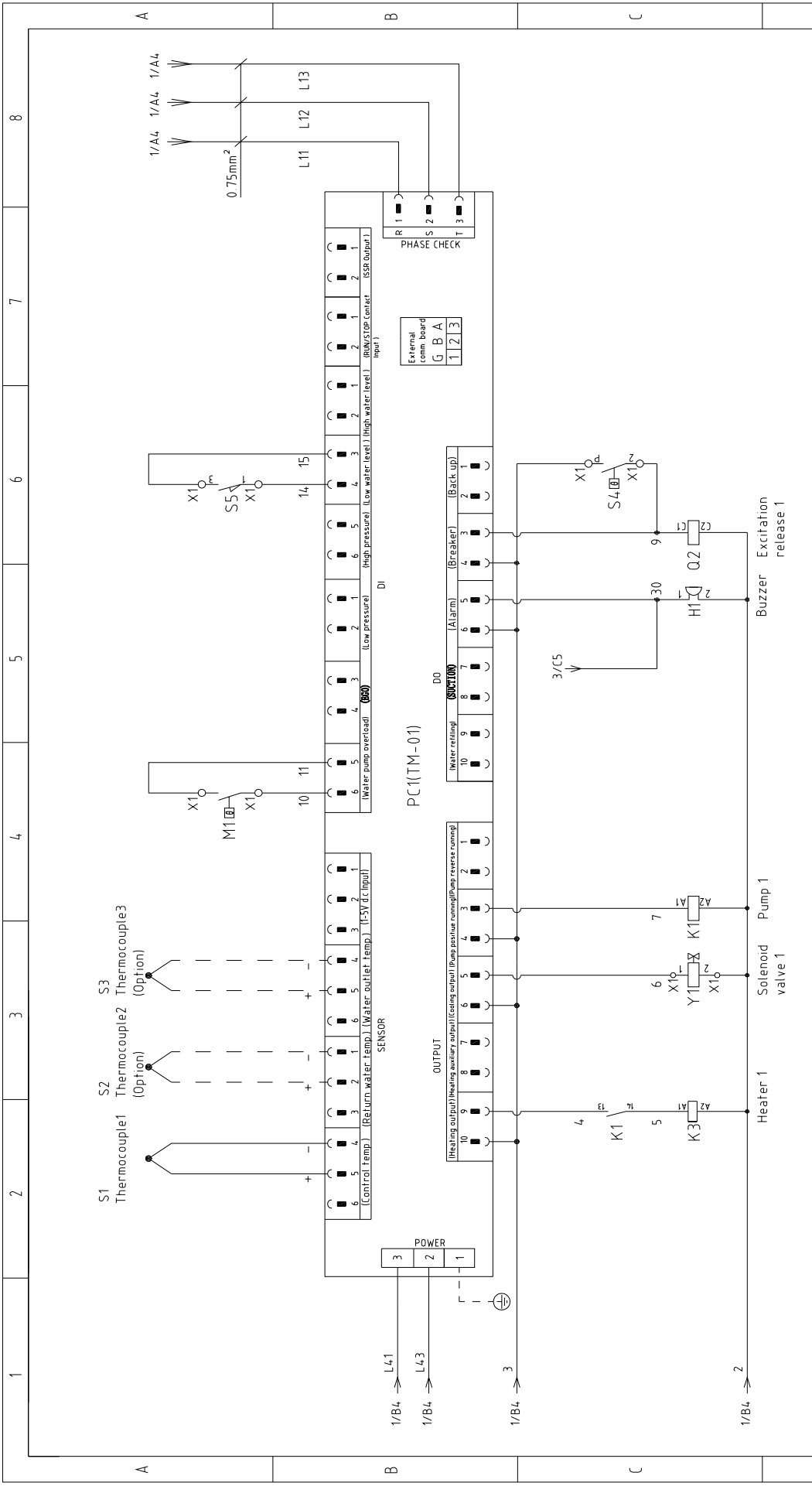




版本 Ver.G

D	Title	STM-910-D	Drawing NO	STM-910-D-CE-230V-H-1	Scale	Page 1	
		Main Circuit Diagram		Standard	CE	Totally 6 Pages	
Mark	Before modification	Modified by	Modify date	Checked by	Proofread by	Designer	
	20180724						
Version		Approved by		Date		Date	
H				20180724		4	
Title		STM-910-D		Drawing NO		STM-910-D-CE-230V-H-1	
Version		Approved by		Date		Date	
H				20180724		4	
Title		STM-910-D		Drawing NO		STM-910-D-CE-230V-H-1	
Scale		CE		Page 1		Totally 6 Pages	
Voltage		230V		Frequency		50HZ	

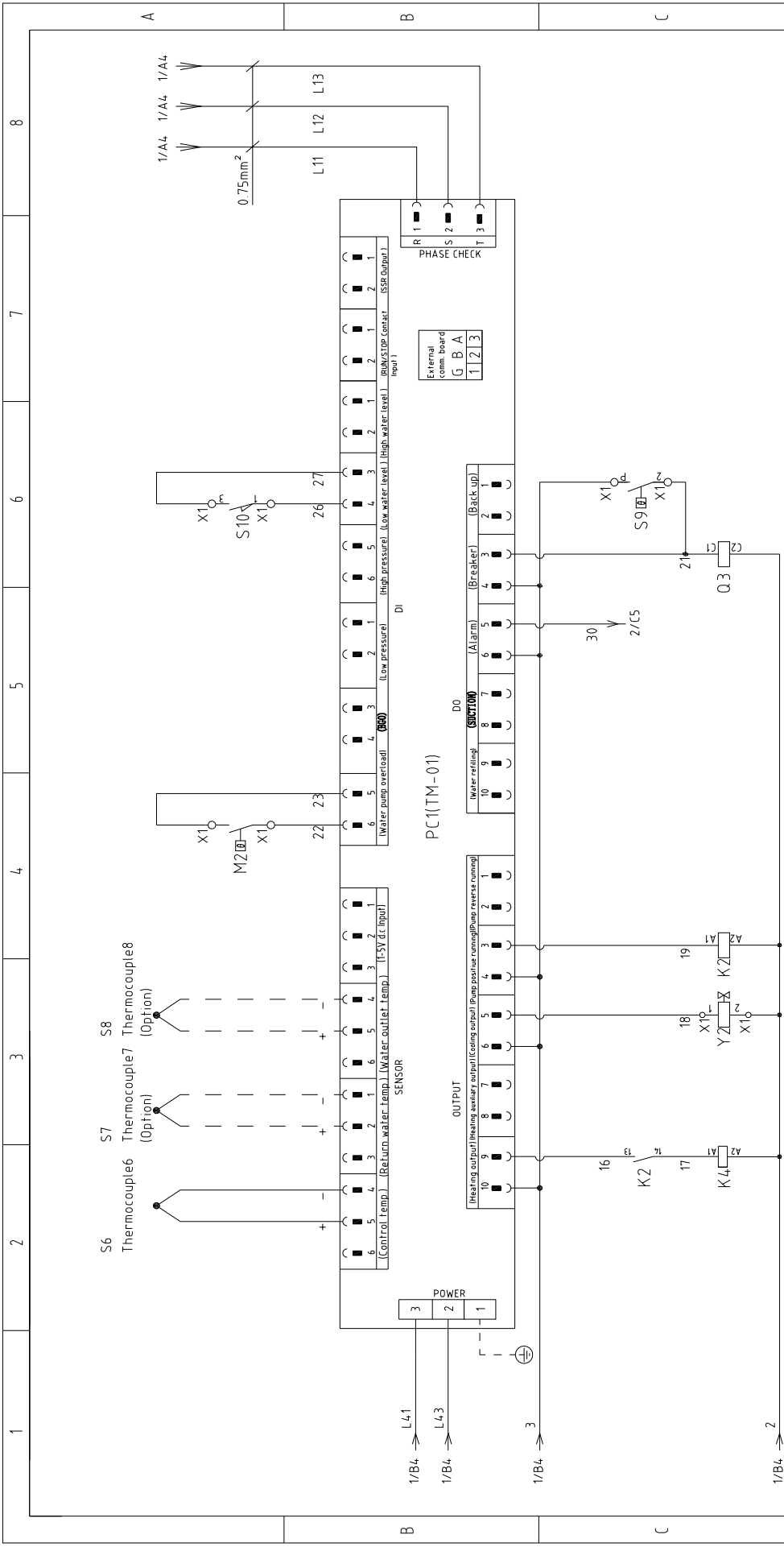




版本	Ver.G	Title		Drawing NO		Scale	Page	2
		H	STM-910-D	STM-910-D	STM-910-D-CE-230V-H-2	Standard	Totally	6
Mark	Before modification	Modified by	Approved by	Date	20180724		Voltage	230V
	After modification	Modify date	Checked by	20180724			Frequency	50HZ
1	2	3	4	5	6	7	8	8

Note: M1 is the overheat protection output contact of water pump 1.



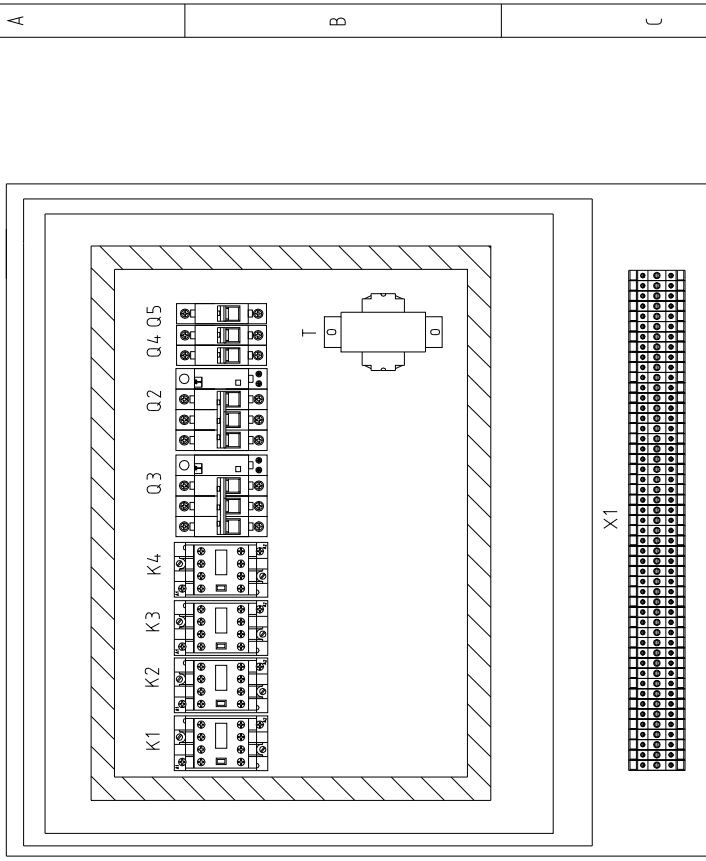
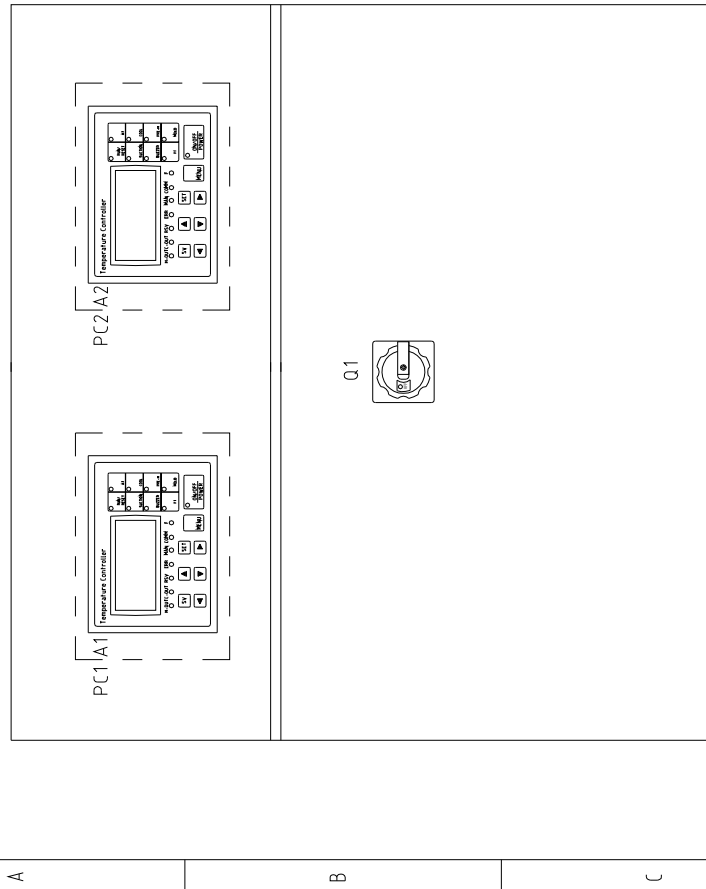


版本	Ver.G	Title		Drawing NO		Scale	Page	3
		H	STM-910-D	STM-910-D	STM-910-D-CE-230V-H-3	Standard	Totally	6
Mark	Before modification	Modified by	Approved by	Version	Date	Voltage		230V
	After modification	Modify date	Checked by	Designer	20180724	Frequency		50HZ
1	2	3	4	5	6	7	8	

Note: M2 is the overheat protection output contact of water pump 2.



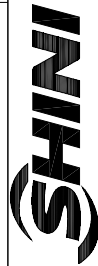
1 2 3 4 5 6 7 8



版本 Ver.G

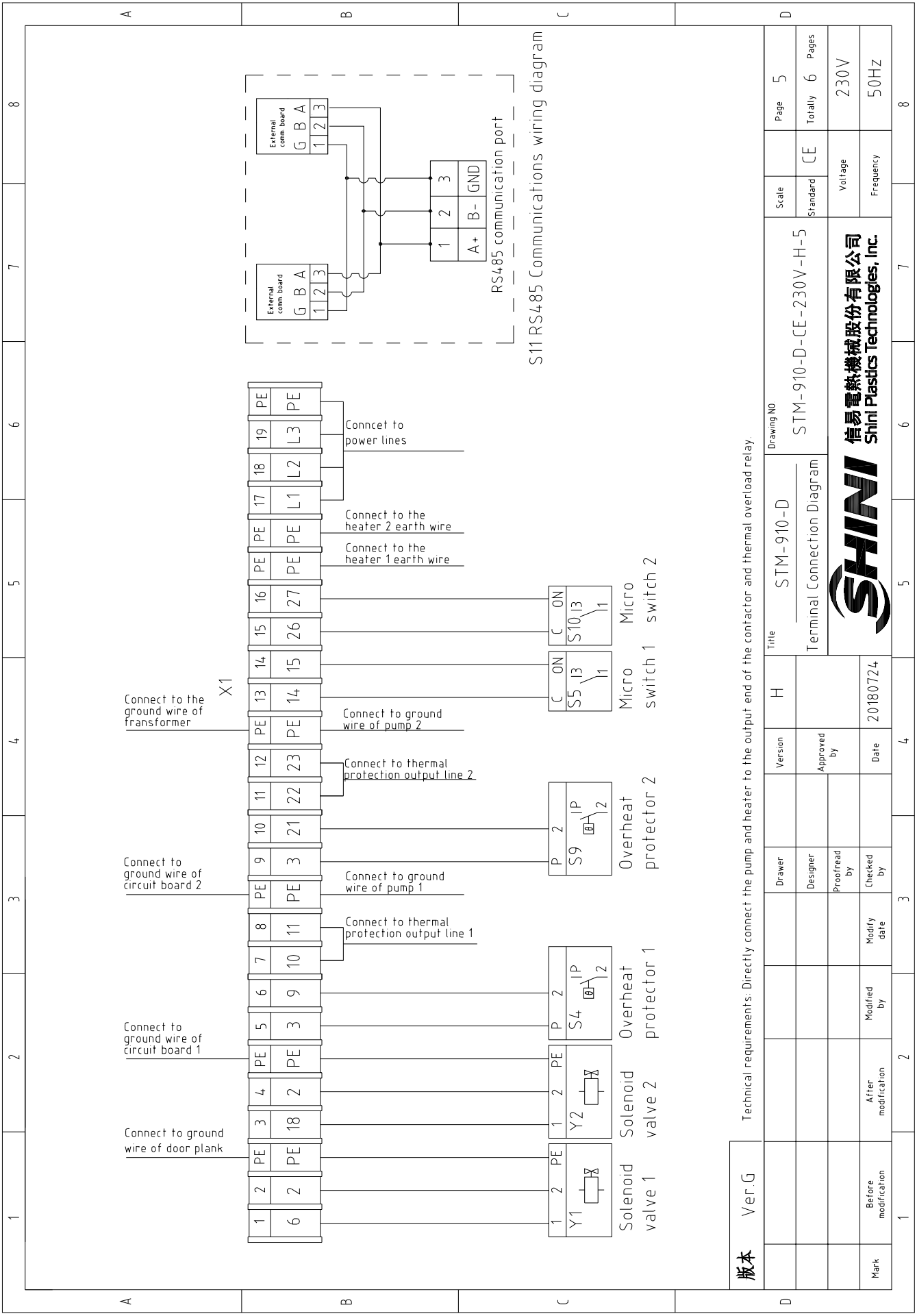
Mark	Before modification	Modified by	Modify date	Checked by	Date	20180724
				Proofread by		
		Designer		Approved by		
		Drawer		Version	H	

Title		Drawing NO		Scale	Page
STM-910-D		STM-910-D-CE-230V-H-4		Standard	4
Electrical Components Layout		CE		Voltage	Totally 6
				Frequency	Pages
					230V
					50HZ



信易電熱機械股份有限公司
Shini Plastics Technologies, Inc.

1 2 3 4 5 6 7 8



S11 RS485 Communications wiring diagram

版本 Ver.G

Technical requirements: Directly connect the pump and heater to the output end of the contactor and thermal overload relay.

Mark	Before modification	Modified by	20180724	Date	Approved by	Version	H	Title	STM-910-D	Drawing NO	Page	5
	After modification	Checked by	20180724						Terminal Connection Diagram		STM-910-D-CE-230V-H-5	Standard
										Voltage		230V
										Frequency		50HZ



1		2		3		4		5		6		7		8	
No.	Symbol	Name	Manufacturer	Type	Specification	Number	Material number	Remark							
1	Q1	Main power switch	EATON	P3-63/EA/SVB	63A	1	YE10636300000								
2	Q2 Q3	Circuit Breakers	TECO	BM-63C/3040S	40A	2	YE40304003000								
3	Q4	Excitation release	TECO	MX	24VAC	2	YE40024000000	A							
4	Q4	Circuit breakers	TECO	BM-63C/2003S 2P	3A	1	YE40200203000								
5	Q5	Circuit breakers	TECO	BM-63C/1006S 1P	6A	1	YE40100600100								
6	K1 K2	Contactors	SIEMENS	3RT6015-1AB01	24VAC	2	YE000601502500								
7	K3 K4	Contactors	SIEMENS	3RT6027-1AC20	24VAC	2	YE000602702600								
8	T	Transformer	JIUXIN	IN=230V/200V OUT=24VAC	120VA	1	YE70023004500								
9	S1 S6	Thermocouple	SHINI	----	K	2	----	(1)							
10	S2 S3 S7 S8	Thermocouple	SHINI	----	K	4	----	(2)							
11	S4 S9	Overheat protector	----	----	250V 5(4)A	2	----	(1)							
12	S5 S10	Micro switch	RENEW	----	----	2	----	(1)							
13	S11	Communication interface board RS-485 (double Dsub-9pin connector)	YUYUN	----	PCS	1	YE90048501200								
14		Shell RS485(SAL-700G-A-19)0	BINCHEG	----	PCS	1	YR40048500000								
15	PC1 PC2 A1 A2	Circuit board	YUYUN	TM-01 (含通讯)	180~430V 50/60Hz	2	YE81012200300								
16	Y1 Y2	Solenoid valve	----	----	24VAC	2	----	(1)							
17	X1	Terminal board	HONEYWELL	SK2.5	----	16	YE60002503200								
18		Terminal board	HONEYWELL	SK2.5PE	----	4	YE60002503400								
19		Terminal board	HONEYWELL	GK6PE	----	2	YE60000603500								
20		Terminal board	HONEYWELL	GK16	----	3	YE60001603200								
21		Terminal board	HONEYWELL	GK16PE	----	1	YE60001603500								
22	M1 M2	Motor	SHINI	TP-75	230V 50Hz 0.75kW	2	----	(1)							
23	EH1 EH2	Heater	SHINI	9kW	230V 50Hz	2	----	(1)							
24	H1	Buzzer	JINGKANG	PK-35A	24VAC/DC	1	YE84003500600								
25		Terminal fittings E/GKseries(honeywell)	HONEYWELL	----	PCS	6	YE60000003900								
版本															
Notes: (1)Means it's not the material inside the control box (2)Means equipped with function of displaying water outlet and return water temperature															
Ver G		Title		Drawing NO		Scale		Page		6		D			
		STM-910-D		STM-910-D-CE-230V-H-6		Standard		CE		Voltage		230V		50HZ	
		Electrical Components List													
Mark		Before modification		Modified by		Modify date		Checked by		Date		20180724			
1		2		3		4		5		6		7		8	

