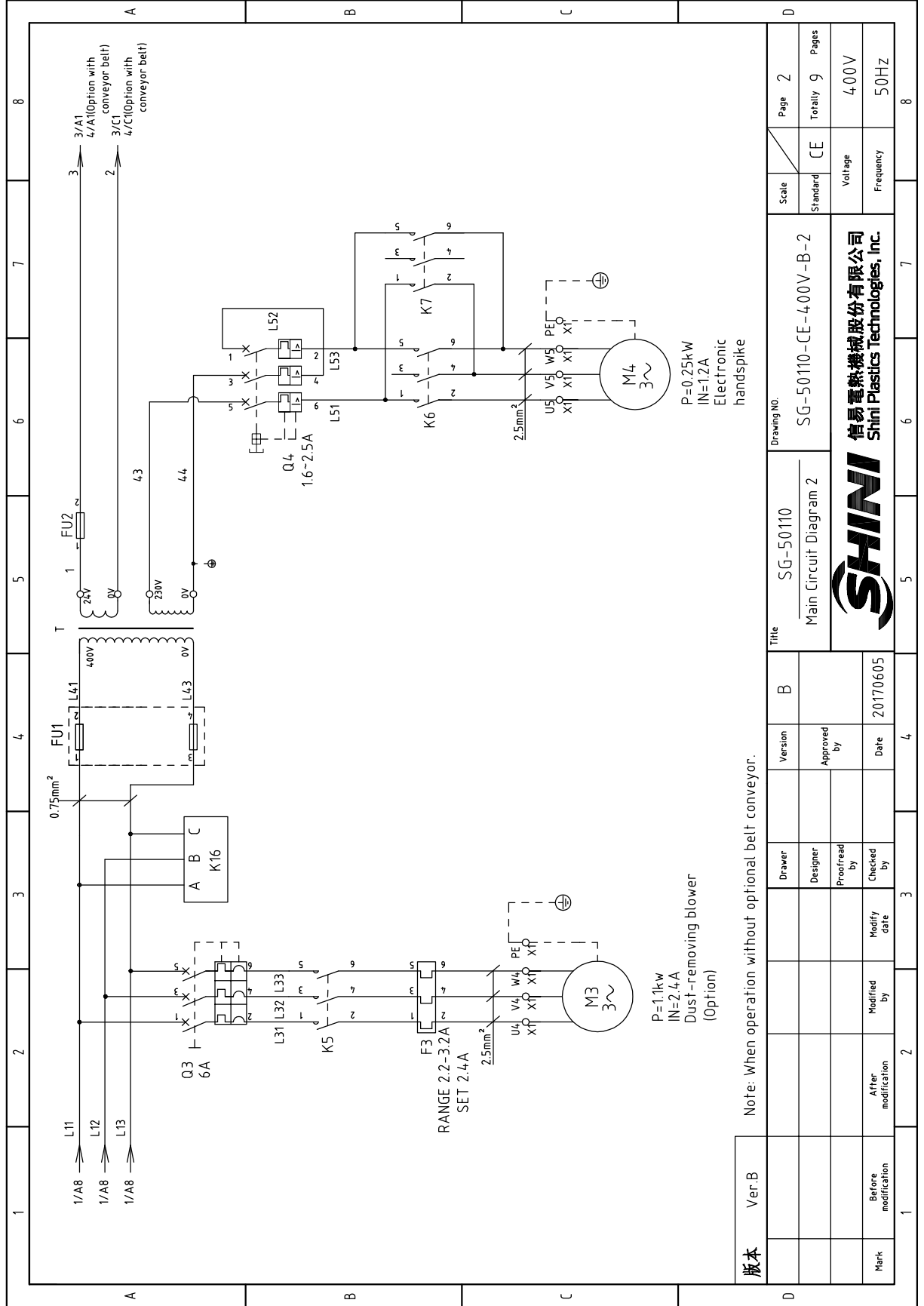


版本 Ver.B

| | | | | | | | | | | | | | | | |
|------|---------------------|--------------------|-------------|------------|-------------|---------|---|------------------------|--|---|-------------|----------------------|----------|-----------------|------|
| Mark | Before modification | After modification | Modify Date | Checked by | Approved by | Version | B | Title | | SG-50110 | Drawing NO. | SG-50110-CE-400V-B-1 | Scale | Page 1 | |
| | | | | | | | | Main Circuit Diagram 1 | | | | | Standard | Totally 9 Pages | |
| | | | | | | | | | | | | | | Voltage | 400V |
| | | | | | | | | | | | | | | Frequency | 50HZ |
| 1 | 2 | 3 | 4 | 5 | 6 | 7 | 8 | SHINI | | 信易塑料机械股份有限公司 Shini Plastics Technologies, Inc. | | | | | |



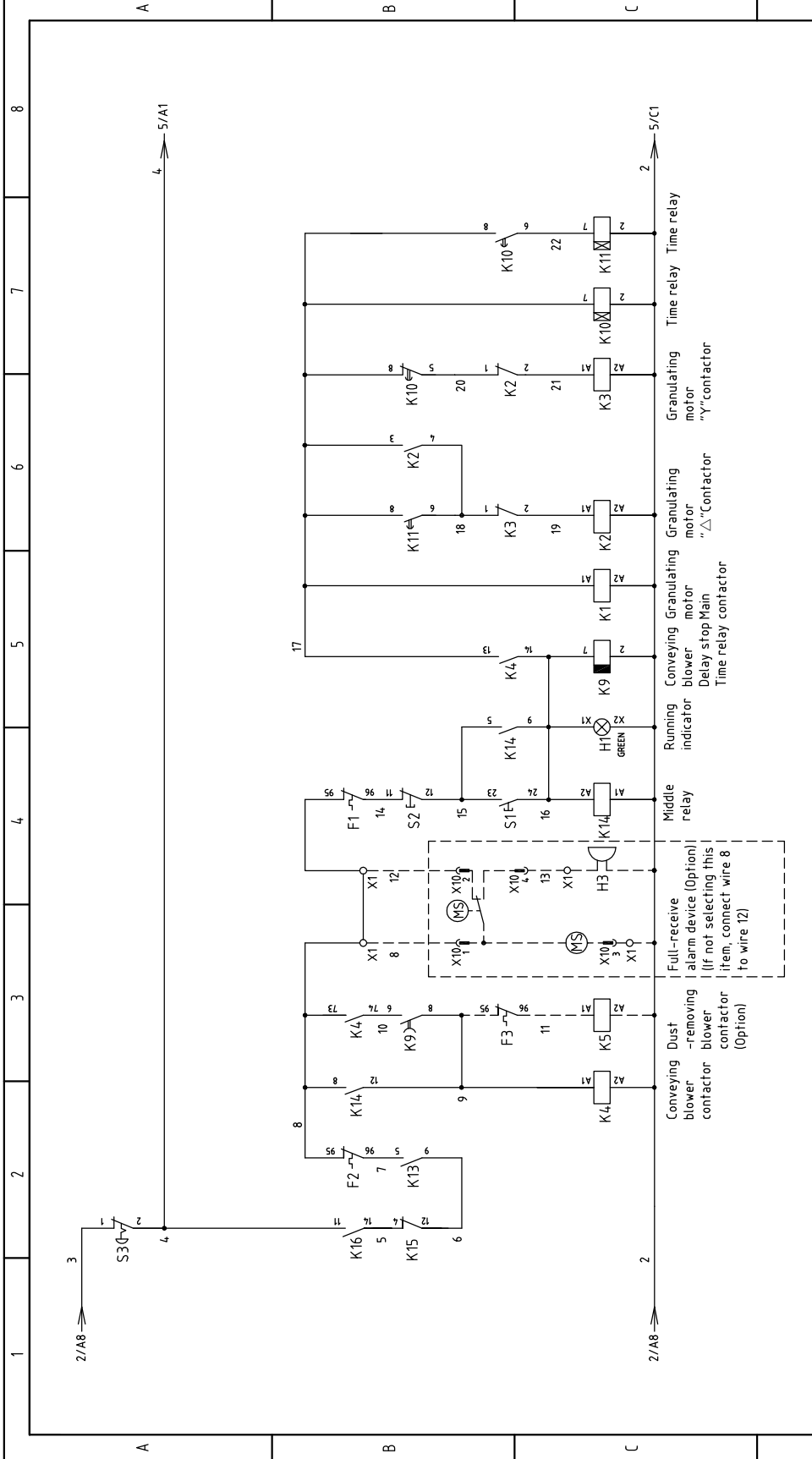
| | |
|------|---------------------|
| 版本 | Ver.B |
| Mark | Before modification |
| | After modification |
| | Modify date |
| | Checked by |
| | Proofread by |
| | Designer |
| | Drawer |

| | |
|--|----------|
| Note: When operation without optional belt conveyor. | |
| Version | B |
| Approved by | |
| Date | 20170605 |

| | |
|-------------|------------------------------------|
| Title | SG-50110 Main Circuit Diagram 2 |
| Drawing NO. | SG-50110-CE-4,00V-B-2 |

| | | | |
|-----------|----------|---------|---|
| Scale | Standard | Page | 2 |
| Voltage | 4,00V | Totally | 9 |
| Frequency | 50HZ | Pages | |





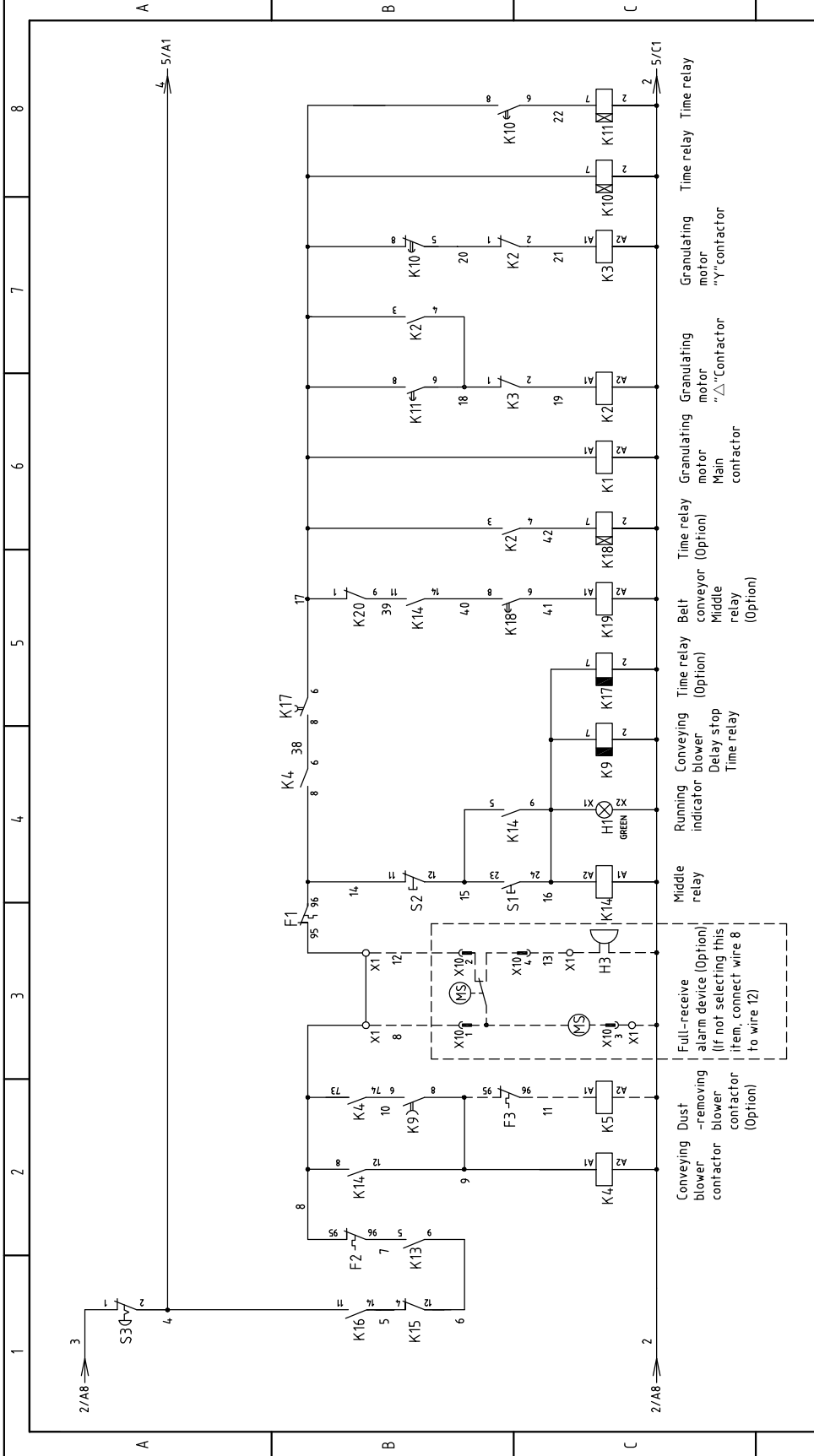
版本 Ver.B

Note: When operation without optional belt conveyor.

| | | | | | |
|------|---------------------|-------------|-------------|---------------------------|----------------------|
| Mark | Before modification | Modified by | Modify date | Checked by | 20170605 |
| | | | | Approved by | |
| | | Designer | | Version | B |
| | | Drawer | | Title | SG-50110 |
| | | | | Control Circuit Diagram 1 | SG-50110-CE-400V-B-3 |
| | | | | Drawing NO. | |

| | | | |
|-----------|----------|----|--------|
| Scale | Standard | CE | Page 3 |
| Voltage | 400V | | |
| Frequency | 50Hz | | |
| Totally | 9 | | |



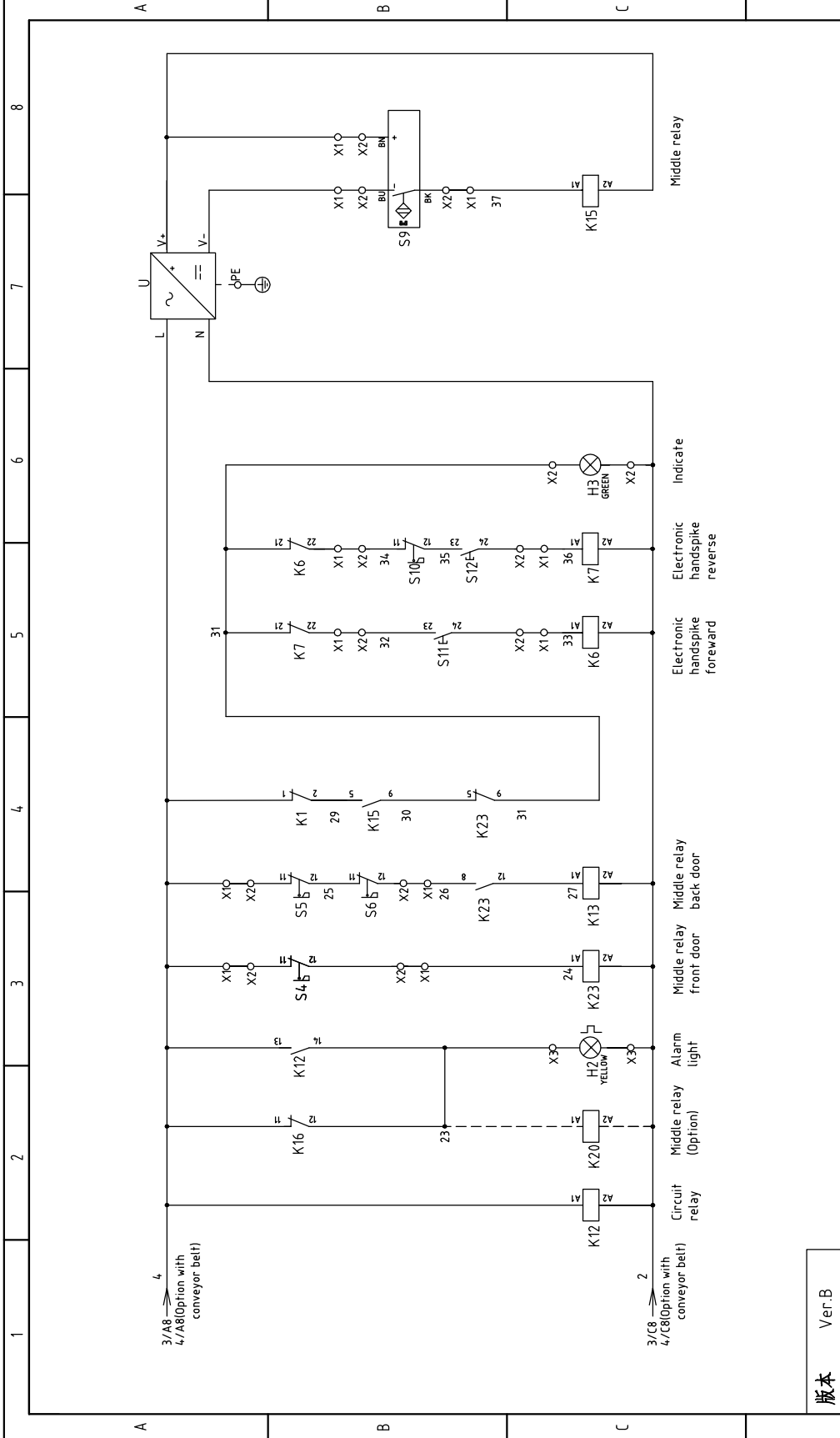


| | |
|------|---------------------|
| 版本 | Ver.B |
| Mark | Before modification |
| | After modification |
| | Modified by |
| | Modify date |
| | Checked by |
| | Proofread by |
| | Designer |
| | Drawer |
| | Approved by |
| | Date |
| | 20170605 |


Note: When operation with optional belt conveyor.

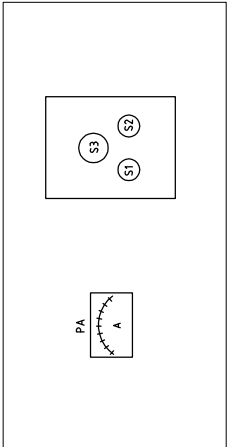
| | | | |
|---------------------------|----------------------|-----------|---------|
| Ver.B | SG-50110 | Scale | Page |
| Control Circuit Diagram 2 | SG-50110-CE-400V-B-4 | Standard | Totally |
| | | Voltage | Pages |
| | | Frequency | 4.00V |
| | | | 50HZ |
| | | | 4 |
| | | | 9 |
| | | | 8 |



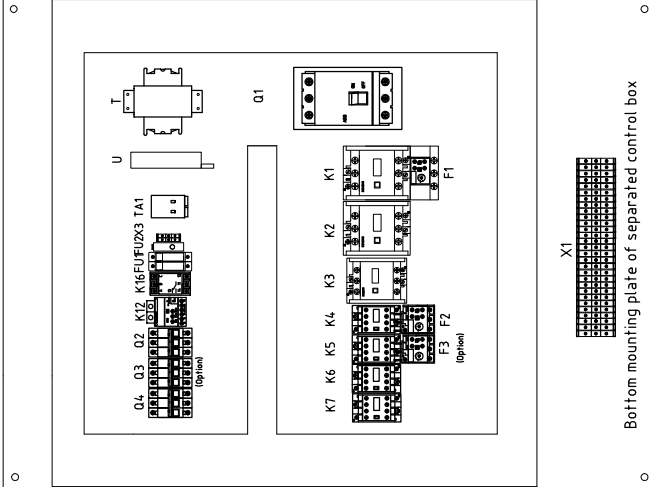
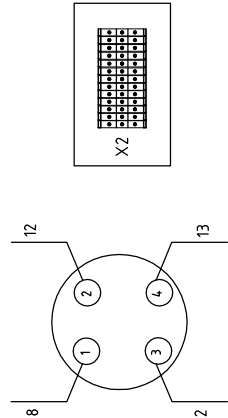


版本 Ver.B

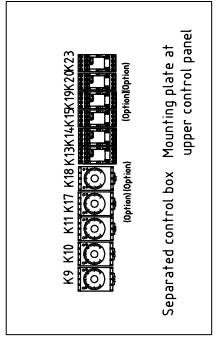
| | | | | | | | | | | | | | |
|--|---------------------|-------------|-------------|------------|------|----------|---------|---|-------|----------|-------------|---|----|
| Mark | Before modification | Modified by | Modify date | Checked by | Date | 20170605 | Version | B | Title | SG-50110 | Drawing NO. | Page | 5 |
| | After modification | Modified by | Modify date | Checked by | | | | | | | | Standard | CE |
| Control Circuit Diagram 3 | | | | | | | | | | | | SG-50110-CE-4.00V-B-5 | |
|  | | | | | | | | | | | | 信易電熱機械股份有限公司 Shini Plastics Technologies, Inc. | |
| Voltage Frequency | | | | | | | | | | | | 4.00V 50Hz | |
| Scale Standard | | | | | | | | | | | | CE | |
| Middle relay Electronic handspike forward Electronic handspike reverse Indicate | | | | | | | | | | | | Middle relay Voltage Frequency | |
| 3/A8 → 4 4/A8 (Option with conveyor belt) | | | | | | | | | | | | 3/A8 → 2 4/C8 (Option with conveyor belt) | |



X10 Connection diagram of metal connectors
Connect to full-receive alarm device (Option)

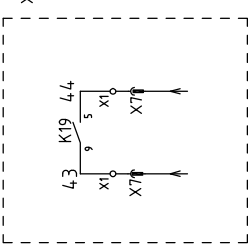


Bottom mounting plate of separated control box

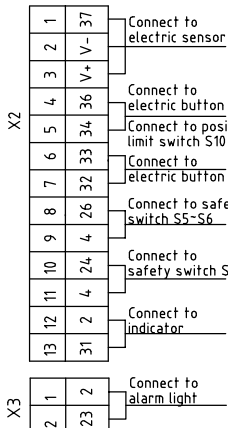
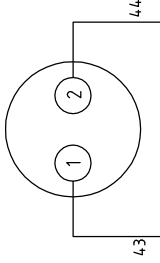


Separated control box Mounting plate at upper control panel

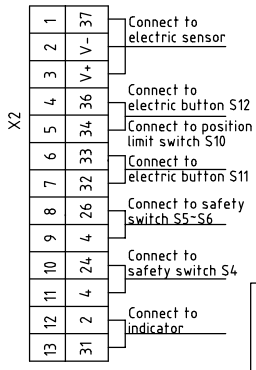
Control contact wiring diagram in collocation with belt conveyor



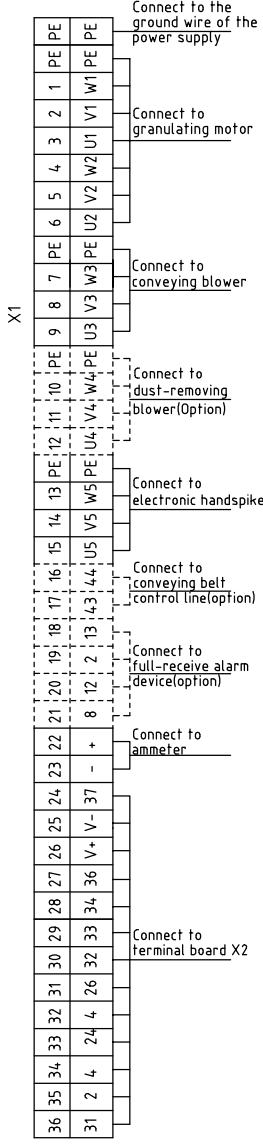
X7 Connection diagram of metal connectors
Connect to belt conveyor (Option)



X2





X3



X1

版本 Ver.B

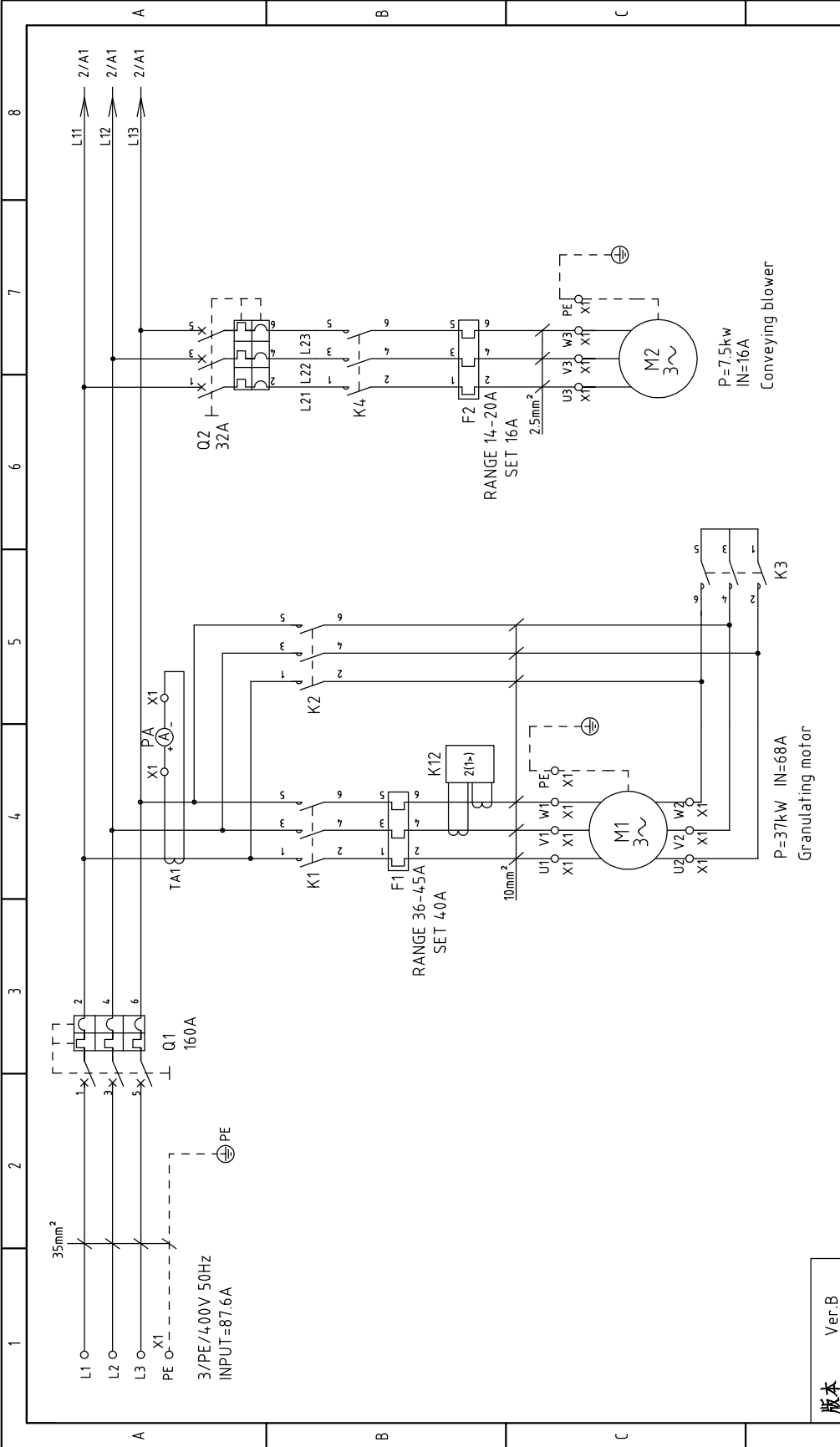
| | | | | | | | | | | | |
|---|---------------------|-------------|--------------------|------------|------|---------------------------------------|---|---|-------------------------|-----------|--------------------|
| Mark | Before modification | Modified by | After modification | Checked by | Date | 20170605 |  信易塑料机械股份有限公司 Shini Plastics Technologies, Inc. | Drawing NO. SG-50110 Electrical Components Layout | Scale Standard CE | Page 6 | Pages Totally 9 |
| | | | | | | Voltage 4.00V Frequency 50HZ | | | | | |
| Title SG-50110 Electrical Components Layout | | | | | | | | | | | |
| Version B | | | | | | | | | | | |
| Approved by | | | | | | | | | | | |
| Date 20170605 | | | | | | | | | | | |
| Modified by | | | | | | | | | | | |
| Modify date | | | | | | | | | | | |
| Checked by | | | | | | | | | | | |
| Designer | | | | | | | | | | | |
| Proofread by | | | | | | | | | | | |
| Drawer | | | | | | | | | | | |

| 1 | 2 | | 3 | 4 | 5 | 6 | 7 | 8 | |
|------|-------------|------------------------------|---|-----------------|---|-----------------------|-----------------|-----------------|---------------|
| NO. | Symbol | Name | Manufacturer | Type | Specification | Number | Material number | Remark | |
| 1 | Q1 | Breaker interlock | ABB | A2B250TMF200 | 200A | 1 | YE41252200000 | | |
| 2 | Q2 | Circuit breakers | TECO | BM-63C/3032S | 32A | 1 | YE40303703000 | | |
| 3 | Q3 | Circuit breakers | TECO | BM-63C/3006S | 6A | 1 | YE40300603000 | (3) | |
| 4 | Q4 | Thermomagnet circuit breaker | CHNT | NS2-25 | 16-2.5A | 1 | YE10162500100 | | |
| 5 | K1,K2 | Contactor | SIEMENS | 3RT5044-1AC20 | 24VAC 50/60Hz | 2 | YE00504402600 | | |
| 6 | K3 | Contactor | SIEMENS | 3RT5036-1AC20 | 24VAC 50/60Hz | 1 | YE00503602600 | | |
| 7 | | Auxiliary contactor | SIEMENS | 3RH5921-1CA10 | 1NO | 1 | YE00592110000 | | |
| 8 | | Auxiliary contactor | SIEMENS | 3RH5921-1CA01 | 1NC | 3 | YE00592110100 | | |
| 9 | | Auxiliary contactor | SIEMENS | 3RH5921-1CA10 | 1NO | 1 | YE00592110000 | (4) | |
| 10 | K4 | Contactor | SIEMENS | 3RT6027-1AC20 | 24VAC 50/60Hz | 1 | YE00602702600 | | |
| 11 | | Auxiliary contactor | SIEMENS | 3RH6911-1AA10 | 1NO | 1 | YE00691110000 | | |
| 12 | K5 | Contactor | SIEMENS | 3RT6015-1AB01 | 24VAC 50/60Hz | 1 | YE00601502500 | (3) | |
| 13 | K6,K7 | Contactor | SIEMENS | 3RT6015-1AN22 | 220V 50/60Hz | 2 | YE00601522000 | | |
| 14 | K9 | Timer | YUYUN | TRF-N | 24VAC | 1 | YE86032400000 | | |
| 15 | K10 | Timer | YUYUN | TH3A-NAB/60S | 24VAC | 1 | YE86602400300 | | |
| 16 | K11 | Timer | YUYUN | TH3A-NAB/3S-60M | 24VAC | 1 | YE86123000000 | | |
| 17 | K13,K14,K23 | Middle relay | Honeywell | GR-2C-AC24V | 24VAC | 3 | YE03022400300 | | |
| 18 | K14 | Middle relay | Honeywell | GR-4C-AC24V | 24VAC | 1 | YE03042400300 | (4) | |
| 19 | K15 | Middle relay | WEIDMULLER | DRM270024LT | 24VDC | 1 | YE03272400000 | | |
| 20 | K12 | Current relay | SCHNEIDER | LT4760BA | 24VAC 5-60A | 1 | YE04047600900 | | |
| 21 | K16 | Relay | CHAOSHI | ABJ1-10W | 380VAC 50/60Hz | 1 | YE03103800000 | | |
| 22 | K17 | Timer | YUYUN | TRF-N | 24VAC | 1 | YE86032400000 | (4) | |
| 23 | K18 | Timer | YUYUN | TH3A-NAB/60S | 24VAC | 1 | YE86602400300 | (4) | |
| 24 | K19,K20 | Middle relay | Honeywell | GR-2C-AC24V | 24VAC | 2 | YE03022400300 | (4) | |
| 25 | F1 | Overload relay | SIEMENS | 3RU5146-4JB0 | 4.5-63A | 1 | YE01514640000 | | |
| 版本 | | Ver.B | Notes: (1)Means it's not the material inside the control box.(2)Means optional accessories of full-receive alarm device.(3) Means optional accessories of de-dusting blower;(4)Stand for collocated with conveyor belt. | | | | | | |
| | | Drawer | Version | B | Title | Drawing NO. | Scale | Page | |
| | | Designer | Approved by | | SG-50110 | SG-50110-CE-4.00V-B-7 | Standard | 7 | |
| | | Proofread by | | | Electrical Components List 1 | | CE | Totally 9 Pages | |
| | | Checked by | Date | 20170605 |  SHINI 信易塑料机械股份有限公司 Shini Plastics Technologies, Inc. | | Voltage | | |
| Mark | | After modification | Modify date | | | | Frequency | | 4.00V 50Hz |
| 1 | 2 | | 3 | 4 | 5 | 6 | 7 | 8 | |


| 1 | 2 | | 3 | 4 | 5 | 6 | 7 | 8 | |
|-------|----------------|---|--------------|-----------------------|----------------|-----------------------|-----------------|-----------------|--|
| NO. | Symbol | Name | Manufacturer | Type | Specification | Number | Material number | Remark | |
| 26 | F2 | Overload relay | SIEMENS | 3RU6126-4BB0 | 14-20A | 1 | YE0126014.0000 | | |
| 27 | F3 | Overload relay | SIEMENS | 3RU6116-1DB0 | 2.2-3.2A | 1 | YE01160220000 | (3) | |
| 28 | FU1 | Fuse | CHINT | RT28-32 | 32A/2P | 1 | YE41032200000 | A | |
| 29 | FU2 | Fuse core | MRO | MRO/2A(10×38)500V | 2A Fuse core | 2 | YE46002000100 | | |
| 30 | FU2 | Fuse | YINDA | FS-10 | ---- | 1 | YE41001000000 | | |
| 31 | | Glass tube | ---- | 6×30 | 10A | 1 | YE4663104.0000 | | |
| 32 | H2 | Alarm light | SHINI | LED-3051 | 24VAC | 1 | YE83305100900 | (1) | |
| 33 | TA1 | Current transformer | RATIO | RCT-35 | 150/5A | 1 | YE04150500000 | | |
| 34 | PA | Ammeter | SFIM | DH-670 | 150/5A | 1 | YE25671500000 | (1) | |
| 35 | H4 | Indicator | ABB | CL2-502G | 24VAC GREY | 1 | YE83050200100 | (1) | |
| 36 | S1(H1),S11,S12 | Start button | SCHNEIDER | XB2BW33B1C | 24VAC | 3 | YE11233100000 | (1) | |
| 37 | S2 | Stop button | SCHNEIDER | XB2BA22C | 400VAC | 1 | YE11222200000 | (1) | |
| 38 | S3 | Emergency stop button | SCHNEIDER | XB2BS542C | 400VAC | 1 | YE11254200000 | (1) | |
| 39 | H3 | Buzzer | TEND | EA-2 | 24VAC | 1 | YE84240200000 | (1)(2) | |
| 40 | MS | Material level sensor | SIPAI | SR-80 | 24VAC | 1 | YE158024.00100 | (1)(2) | |
| 41 | S4,S5,S6 | Safety switch | SCHMERSAL | AZ 15ZVK-1476 | AC-15 | 3 | YE16147600100 | (1) | |
| 42 | S9 | Electric sensor | DELIN | DL-12 | 24VDC | 1 | YE151224.00000 | (1) | |
| 43 | S10 | Limit switch | SCHMERSAL | ZS 336-11Z | ----- | 1 | YE14332100000 | (1) | |
| 44 | T | Transformer | BAIYUN | IN=400V OUT=24/230V | 350VA / 1500mA | 1 | YE70100245700 | C | |
| 45 | U | DC power | MEAN WELL | NES-35-24 | OUT=24VDC 1.5A | 1 | YE713524.00100 | | |
| 46 | X1 | Terminal board | Honeywell | 35mm ² PE | ---- | 1 | YE60003503500 | | |
| 47 | | | Honeywell | 16mm ² | ---- | 6 | YE60001603200 | | |
| 48 | | | Honeywell | 16mm ² PE | ---- | 1 | YE60001603500 | | |
| 49 | | | Honeywell | 2.5mm ² | ---- | 21 | YE60002503200 | | |
| 50 | | | Honeywell | 2.5mm ² PE | ---- | 2 | YE60002503400 | | |
| Ver.B | | Notes: (1)Means it's not the material inside the control box.(2)Means optional accessories of full-receive alarm device.(3) Means optional accessories of de-dusting blower.(4)Stand for collocated with conveyor belt. | | | | | | | |
| D | | Title | | Drawing NO. | | Scale | | Page | |
| | | SG-50110 | | SG-50110 | | SG-50110-CE-4.00V-B-8 | | 8 | |
| | | Electrical Components List 2 | | | | CE | | Totally 9 Pages | |
| Mark | | Before modification | | After modification | | Modified by | | Voltage | |
| | | 20170605 | | | | | | 4.00V | |
| | | | | | | | | Frequency | |
| | | | | | | | | 50HZ | |
| 1 | | 2 | | 3 | | 4 | | 5 | |
| | | | | | | | | 6 | |
| | | | | | | | | 7 | |
| | | | | | | | | 8 | |

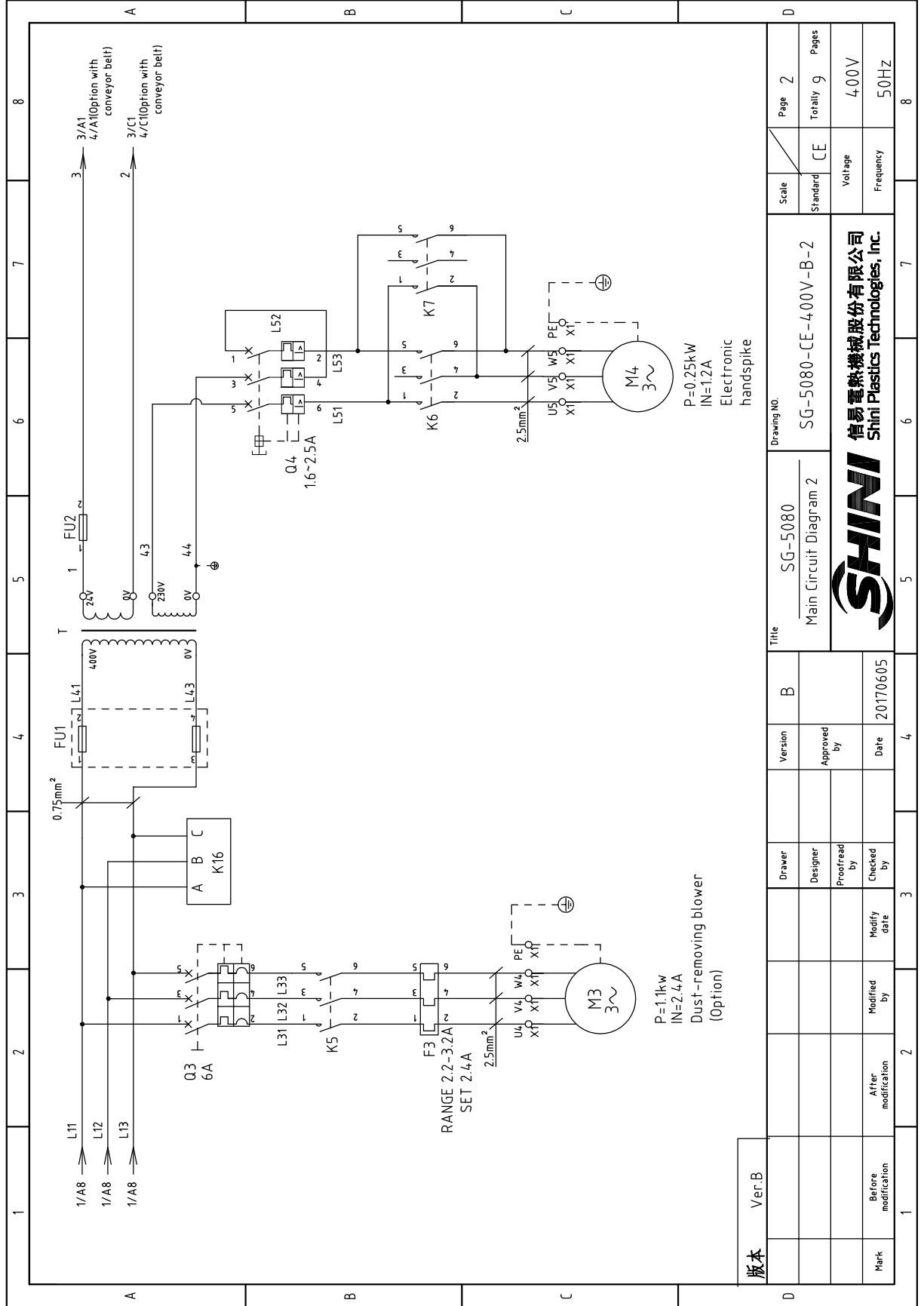


| 1 | 2 | | 3 | 4 | 5 | 6 | 7 | 8 | |
|-------|--------|----------------------|--------------|---|------------------|--|-----------------|-------------------|-----------|
| NO. | Symbol | Name | Manufacturer | Type | Specification | Number | Material number | Remark | |
| 51 | | | Honeywell | 2.5mm ² | ---- | 4 | YE60002503200 | (2) | |
| 52 | | | Honeywell | 2.5mm ² | ---- | 2 | YE60002503200 | (4) | |
| 53 | X2 | Terminal board | Honeywell | 2.5mm ² | ---- | 13 | YE60002503200 | A | |
| 54 | X3 | Terminal board | Honeywell | 2.5mm ² | ---- | 2 | YE60002503200 | | |
| 55 | X7 | Metal joint | SHINI | PLT-162-RR(△) | 2P | 1 | YE68016200100 | (1)(4) | |
| 56 | X10 | Metal joint | SHINI | PLT-254-PM | 4P | 1 | YE68025400000 | (1)(2) | |
| 57 | | | ---- | PLT-254-RF | 4P | 1 | YE68025400100 | (1)(2) | |
| 58 | M1 | Motor | ---- | ---- | 4.00V 50Hz 45KW | 1 | ---- | (1) | |
| 59 | M2 | Blower | SHINI | ---- | 4.00V 50Hz 7.5KW | 1 | ---- | (1) | |
| 60 | M3 | Blower | SHINI | ---- | 4.00V 50Hz 1.1KW | 1 | ---- | (1)(3) | |
| 61 | M4 | Electronic handspike | ---- | ---- | 230V 50Hz 0.25KW | 1 | ---- | (1) | |
| B | | | | | | | | | |
| C | | | | | | | | | |
| D | | | | | | | | | |
| Ver.B | | | | Notes: (1)Means it's not the material inside the control box.(2)Means optional accessories of full-receive alarm device.(3) Means optional accessories of de-dusting blower.(4)Stand for collocated with conveyor belt. | | Drawing NO. SG-50110-CE-4.00V-B-9 | | Scale CE | Page 9 |
| Mark | | | | Before modification | | After modification | | Voltage 4.00V | |
| | | | | Date 20170605 | | SHINI Shini Plastics Technologies, Inc. | | Frequency 50Hz | |
| 1 | | | | | 5 | 6 | 7 | 8 | |



版本 Ver.B

| | | | | | | | | |
|------|---------------------|--------------|--------------------------------|----------|---|------------------------------------|-----------|-----------|
| Mark | Before modification | Modified by | Date | 20170505 |  信易塑料机械股份有限公司 Shini Plastics Technologies, Inc. | Drawing NO. SG-5080-CE-400V-B-1 | Scale | Page 1 |
| | After modification | Modified by | Date | 20170505 | | | Standard | Totally 9 |
| | | Checked by | | | | | Voltage | 400V |
| | | Proofread by | | | | | Frequency | 50HZ |
| | | Designer | | | | | | |
| | | Approved by | | | | | | |
| | | Version | B | | | | | |
| | | Title | SG-5080 Main Circuit Diagram 1 | | | | | |



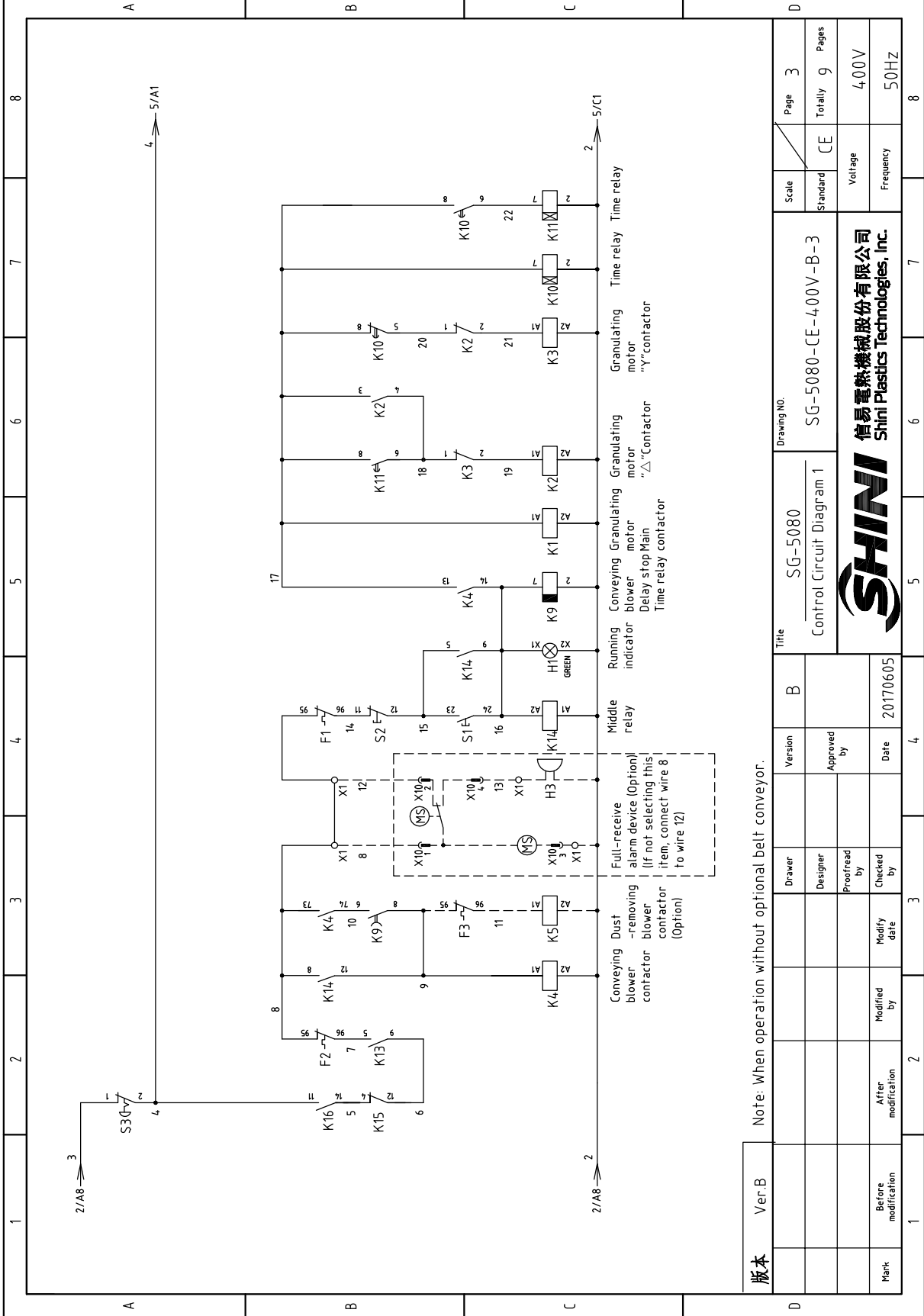
| | | | | | | |
|---------|---------------------|--------------|-------------|------------|----------|------|
| Mark | Before modification | Modified by | Modify date | Checked by | 20170605 | Date |
| | After modification | Modified by | Modify date | Checked by | | Date |
| Version | Designer | Proffread by | Approved by | Version | B | |
| Drawer | | | | Version | | |

| | | | | |
|------------------------|----------|---|-----------|--------|
| Scale | Standard | CE | Page 2 | Page 2 |
| Scale | Standard | CE | Totally 9 | Pages |
| Voltage | 400V | | | |
| Frequency | 50HZ | | | |
| Title | | Drawing NO. | | |
| SG-5080 | | SG-5080-CE-400V-B-2 | | |
| Main Circuit Diagram 2 | | | | |
| SHINI | | 信易電熱機械股份有限公司 Shini Plastics Technologies, Inc. | | |

版本 Ver.B

P=1.1kw
IN=2.4A
Dust-removing blower
(Option)

P=0.25kW
IN=1.2A
Electronic
handspike



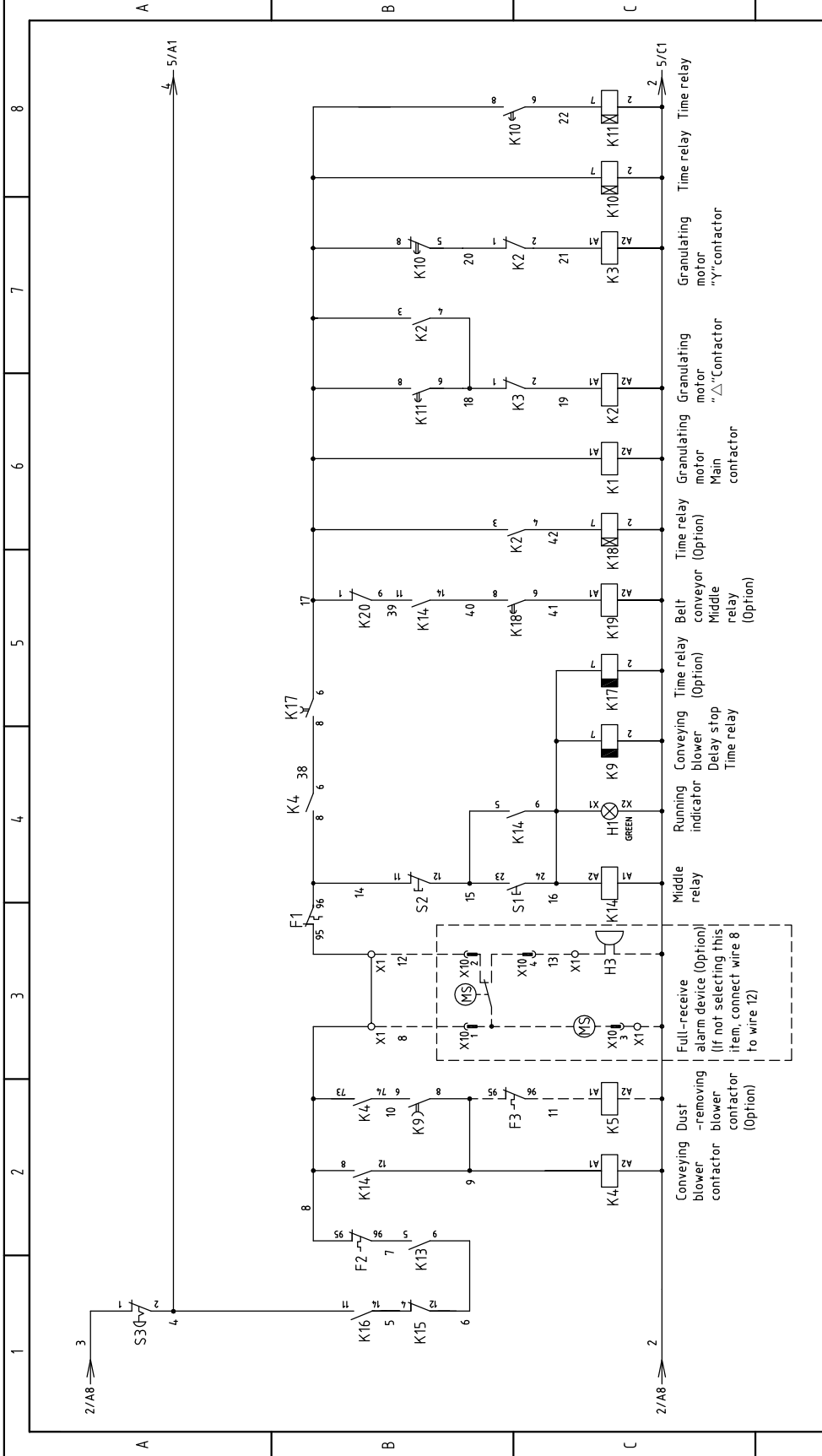
| | | | | | | | | | | | | | | | | | | | |
|------|---------------------|--------------------|-------------|-------------|------------|--------------|----------|--------|---------|---|-------|--------------------------------------|-------------|---------------------|-------|----------|----|-----------|------|
| Mark | Before modification | After modification | Modified by | Modify date | Checked by | Proofread by | Designer | Drawer | Version | B | Title | SG-5080 Control Circuit Diagram 1 | Drawing NO. | SG-5080-CE-400V-B-3 | Scale | Standard | CE | Page | 3 |
| Mark | | | | | | | | | | | | | | | | | | Totally | 9 |
| | | | | | | | | | | | | | | | | | | Voltage | 400V |
| | | | | | | | | | | | | | | | | | | Frequency | 50HZ |

| | | | |
|-------------|---|------|----------|
| Version | B | Date | 20170605 |
| Approved by | | Date | |
| Checked by | | Date | |
| Modified by | | Date | |
| Modify date | | Date | |

Version: Ver.B

Note: When operation without optional belt conveyor.





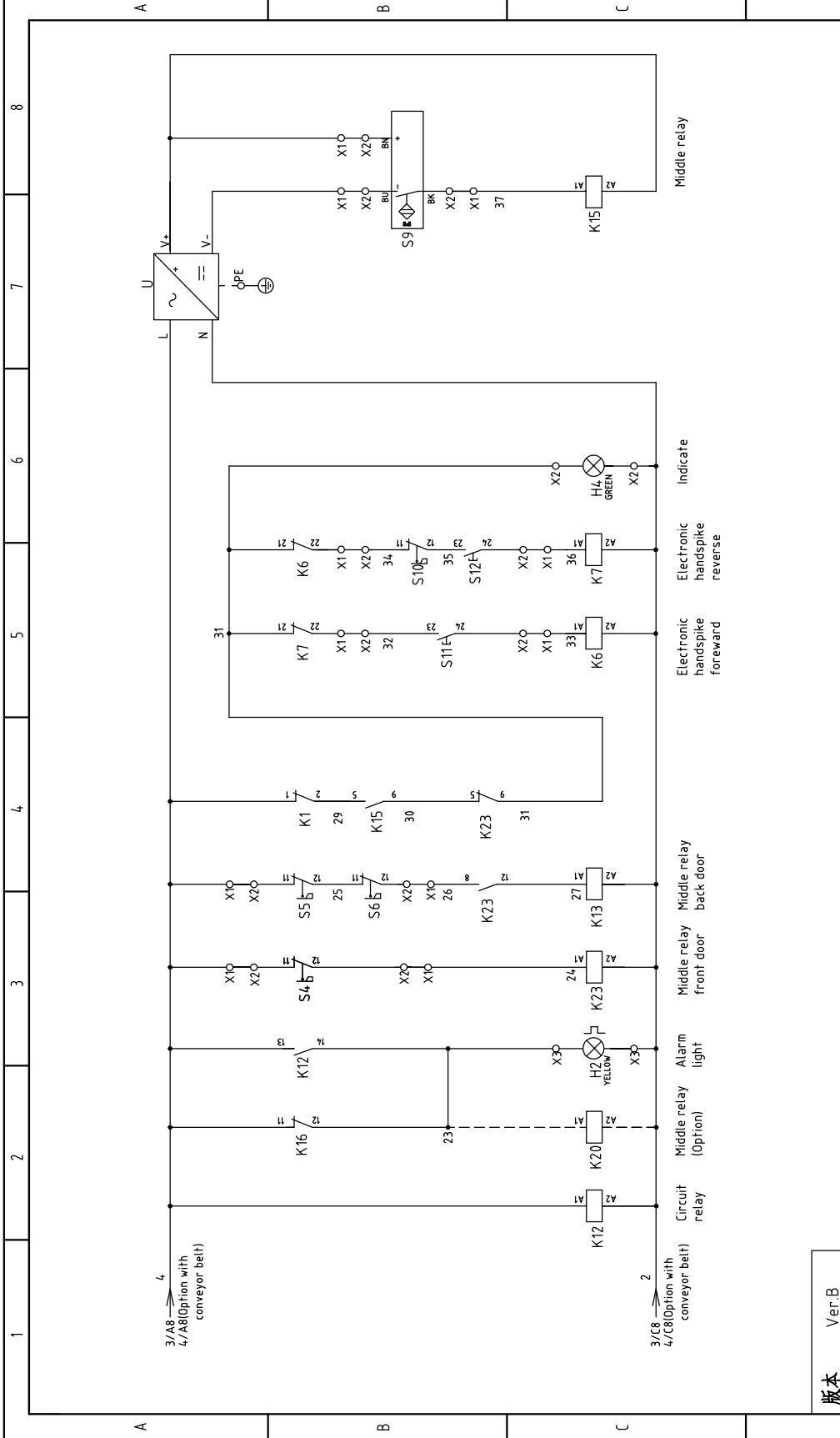
| | |
|------|---------------------|
| 版本 | Ver.B |
| Mark | Before modification |
| | After modification |
| | Modify date |
| | Checked by |
| | Proofread by |
| | Designer |
| | Drawer |

| | | | |
|---------------------------|--|-------------|--|
| Title | | SG-5080 | |
| Control Circuit Diagram 2 | | Drawing NO. | |
| Version | | B | |
| Approved by | | Date | |
| 20170605 | | 20170605 | |

| | | |
|-----------|---------|---|
| Scale | Page | 4 |
| Standard | Totally | 9 |
| CE | Pages | 9 |
| Voltage | 400V | |
| Frequency | 50HZ | |



Note: When operation with optional belt conveyor.

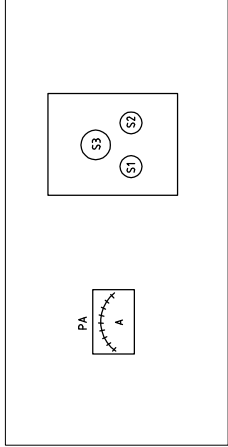


| | | | | | |
|--------------------|---------------------|-------------|-------------|--------------|-------------|
| Mark | Before modification | Modified by | Modify date | Checked by | Date |
| | | | | | 20170605 |
| After modification | | | | Proofread by | Approved by |
| | | | | Designer | Version |
| | | | | | B |

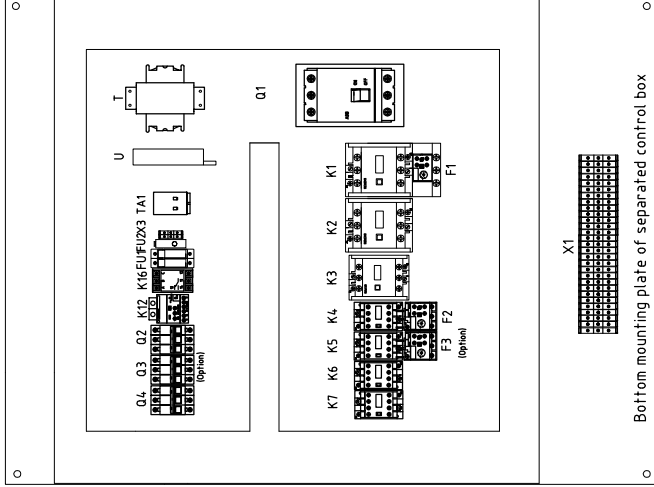
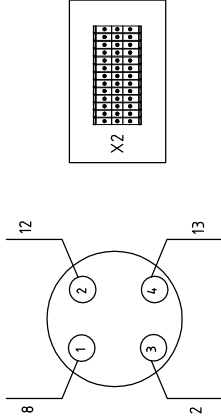
| | | | | | |
|---------------------------|--|---------------------|--|-----------|-----------|
| Title | | Drawing NO. | | Scale | Page |
| SG-5080 | | SG-5080-CE-400V-B-5 | | Standard | 5 |
| Control Circuit Diagram 3 | | | | CE | Totally 9 |
| | | | | Voltage | 4.00V |
| | | | | Frequency | 50HZ |

SHINI
 信易電熱機械股份有限公司
 Shini Plastics Technologies, Inc.

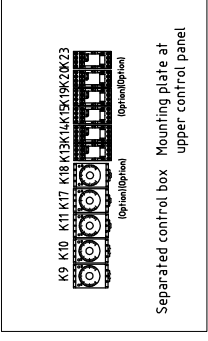
版本 Ver.B



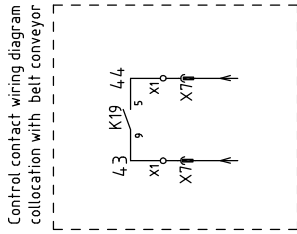
X10 Connection diagram of metal connectors
Connect to full-receive alarm device (Option)



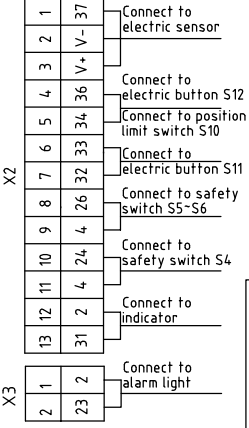
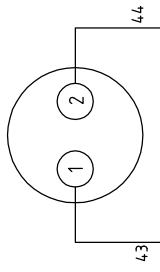
Bottom mounting plate of separated control box



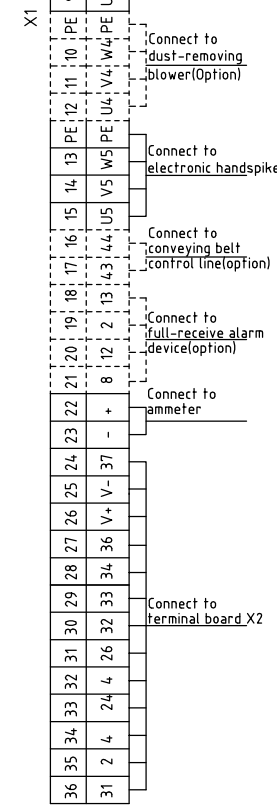
Separated control box Mounting plate at upper control panel



X7 Connection diagram of metal connectors
Connect to belt conveyor (Option)



X3




X1

概本 Ver.B

| | | | | | |
|------------------------------|--|-----------|--|---------|--|
| Drawing NO. | | Scale | | Page | |
| SG-5080 | | Standard | | 6 | |
| Title | | Standard | | Totally | |
| Electrical Components Layout | | CE | | 9 | |
| Version | | Voltage | | Pages | |
| B | | 4.00V | | 9 | |
| Approved by | | Frequency | | Pages | |
| Date | | 50HZ | | 9 | |
| Checked by | | Frequency | | Pages | |
| 20170605 | | 50HZ | | 9 | |
| Modify date | | Voltage | | Pages | |
| Modified by | | 4.00V | | 9 | |
| After modification | | Frequency | | Pages | |
| 1 | | 50HZ | | 9 | |



| 1 | 2 | | 3 | 4 | 5 | 6 | 7 | 8 | | |
|------|---------------------|------------------------------|---|-----------------|-----------------------------------|---------|---------------------|--------|-------|--|
| NO. | Symbol | Name | Manufacturer | Type | Specification | Number | Material number | Remark | | |
| 1 | Q1 | Breaker interlock | ABB | A2B250TMF160 | 160A | 1 | YE41161500000 | | | |
| 2 | Q2 | Circuit Breakers | TECO | BM-63C/3032S | 32A | 1 | YE40303203000 | | | |
| 3 | Q3 | Circuit Breakers | TECO | BM-63C/3006S | 6A | 1 | YE40300603000 | (3) | | |
| 4 | Q4 | Thermomagnet circuit breaker | CHNT | NS2-25 | 16-2.5A | 1 | YE10162500100 | | | |
| 5 | K1,K2 | Contactor | SIEMENS | 3RT5036-1AC20 | 24VAC 50/60Hz | 2 | YE00503602600 | | | |
| 6 | K3 | Contactor | SIEMENS | 3RT5035-1AC20 | 24VAC 50/60Hz | 1 | YE00503502600 | | | |
| 7 | | Auxiliary contactor | SIEMENS | 3RH5921-1CA10 | 1NO | 1 | YE00592110000 | | | |
| 8 | | Auxiliary contactor | SIEMENS | 3RH5921-1CA01 | 1NC | 3 | YE00592110100 | | | |
| 9 | | Auxiliary contactor | SIEMENS | 3RH5921-1CA10 | 1NO | 1 | YE00592110000 | (4) | | |
| 10 | K4 | Contactor | SIEMENS | 3RT6027-1AC20 | 24VAC 50/60Hz | 1 | YE00602702600 | | | |
| 11 | | Auxiliary contactor | SIEMENS | 3RH6911-1AA10 | 1NO | 1 | YE00691110000 | | | |
| 12 | K5 | Contactor | SIEMENS | 3RT6015-1AB01 | 24VAC 50/60Hz | 1 | YE00601502500 | (3) | | |
| 13 | K6,K7 | Contactor | SIEMENS | 3RT6015-1AN22 | 220V 50/60Hz | 2 | YE00601522000 | | | |
| 14 | K9 | Timer | YUYUN | TRF-N/3M | 24VAC | 1 | YE86032400000 | | | |
| 15 | K10 | Timer | YUYUN | TH3A-NAB/60S | 24VAC | 1 | YE86602400300 | | | |
| 16 | K11 | Timer | YUYUN | TH3A-NAB/3S-60M | 24VAC | 1 | YE86123000000 | | | |
| 17 | K13,K14,K23 | Middle relay | Honeywell | GR-2C-AC24V | 24VAC | 3 | YE03022400300 | | | |
| 18 | K14 | Middle relay | Honeywell | GR-4C-AC24V | 24VAC | 1 | YE03042400300 | (4) | | |
| 19 | K15 | Middle relay | WEIDMULLER | DRM270024LT | 24VDC | 1 | YE03272400000 | | | |
| 20 | K12 | Current relay | SCHNEIDER | LT4760BA | 24VAC 5-60A | 1 | YE04047600900 | | | |
| 21 | K16 | Phase sequence protector | CHAOSHI | ABJ1-10-460 | 400VAC 50/60Hz | 1 | YE85104600000 | | | |
| 22 | K17 | Timer | YUYUN | TRF-N/3M | 24VAC | 1 | YE86032400000 | (4) | | |
| 23 | K18 | Timer | YUYUN | TH3A-NAB/60S | 24VAC | 1 | YE86602400300 | (4) | | |
| 24 | K19,K20 | Middle relay | Honeywell | GR-2C-AC24V | 24VAC | 2 | YE03022400300 | (4) | | |
| 25 | F1 | Overload relay | SIEMENS | 3RU5136-4GB0 | 36-45A | 1 | YE01612660000 | | | |
| 版本 | | Ver.B | Notes: (1)Means it's not the material inside the control box.(2)Means optional accessories of full-receive alarm device.(3) Means optional accessories of de-dusting blower.(4)Stand for collocated with conveyor belt. | | Title | | Scale | | Page | |
| | | | Drawer | Version | B | SG-5080 | | 7 | | |
| | | | Designer | Approved by | Electrical Components List 1 | | SG-5080-CE-400V-B-7 | | CE | |
| | | | Proofread by | Date | SHINI | | Voltage | | 4.00V | |
| | | | Checked by | 20170605 | 信易塑料机械股份有限公司 | | Frequency | | 50HZ | |
| | | | Modify date | | Shini Plastics Technologies, Inc. | | | | | |
| Mark | Before modification | After modification | Modified by | Date | 5 | 6 | 7 | 8 | | |
| 1 | 2 | 3 | 4 | 5 | 6 | 7 | 8 | | | |

| 1 | 2 | | 3 | 4 | 5 | 6 | 7 | 8 |
|------|----------------|-----------------------|--------------|---|---------------------|-------------|-----------------|------------------|
| NO. | Symbol | Name | Manufacturer | Type | Specification | Number | Material number | Remark |
| 26 | F2 | Overload relay | SIEMENS | 3RU6126-4BB0 | 14-20A | 1 | YE0126014.0000 | |
| 27 | F3 | Overload relay | SIEMENS | 3RU6116-1DB0 | 2.2-3.2A | 1 | YE01160220000 | (3) |
| 28 | FU1 | Fuse | CHINT | RT28-32 | 32A/2P | 1 | YE41032200000 | A |
| 29 | FU2 | Fuse core | MRO | MRO/2A(10×38)500V | 2A Fuse core | 2 | YE46002000100 | |
| 30 | FU2 | Fuse | YINDA | FS-10 | ---- | 1 | YE41001000000 | |
| 31 | | Glass tube | ---- | 6×30 | 10A | 1 | YE4663104.0000 | |
| 32 | H2 | Alarm light | SHINI | LED-3051 | 24VAC | 1 | YE83305100900 | (1) |
| 33 | TA1 | Current transformer | RATIO | RQT-10 | 100/5A | 1 | YE04100500000 | |
| 34 | PA | Ammeter | SFIM | DH-670 | 100/5A | 1 | YE25671000000 | (1) |
| 35 | H4 | Indicator | ABB | CL2-502G | 24VAC GREY | 1 | YE83050200100 | (1) |
| 36 | S1(H1),S11,S12 | Start button | SCHNEIDER | XB2BW33B1C | 24VAC | 3 | YE11233100000 | (1) |
| 37 | S2 | Stop button | SCHNEIDER | XB2BA22C | 400VAC | 1 | YE11222200000 | (1) |
| 38 | S3 | Emergency stop button | SCHNEIDER | XB2BS542C | 400VAC | 1 | YE11254200000 | (1) |
| 39 | MS | Material level sensor | SIPAI | SR-80 | 24VAC | 1 | YE158024.00100 | (1)(2) |
| 40 | H3 | Buzzer | TEND | EA-2 | 24VAC | 1 | YE8424.0200000 | (1)(2) |
| 41 | S4-S6 | Safety switch | SCHMERSAL | AZ 15ZVK-1476 | AC-15 | 3 | YE16147600100 | (1) |
| 42 | S9 | Electric sensor | DELIN | DL-12 | 24VDC | 1 | YE151224.00000 | (1) |
| 43 | S10 | Limit switch | SCHMERSAL | ZS 336-11Z | ----- | 1 | YE14332100000 | (1) |
| 44 | T | Transformer | BAIYUN | IN=400V OUT=24/230V | 350VA / 1500mA | 1 | YE70400245700 | C |
| 45 | U | DC power | MEAN WELL | NES-35-24 | OUT=24VDC 15A | 1 | YE713524.00100 | |
| 46 | X1 | Terminal board | Honeywell | 35mm ² PE | ---- | 1 | YE60003503500 | |
| 47 | | | Honeywell | 10mm ² | ---- | 6 | YE60001003200 | |
| 48 | | | Honeywell | 10mm ² PE | ---- | 1 | YE60001003500 | |
| 49 | | | Honeywell | 2.5mm ² | ---- | 21 | YE60002503200 | |
| 50 | | | Honeywell | 2.5mm ² PE | ---- | 2 | YE60002503400 | |
| 版本 | | Ver.B | | Notes: (1)Means it's not the material inside the control box.(2)Means optional accessories of full-receive alarm device.(3) Means optional accessories of de-dusting blower.(4)Stand for collocated with conveyor belt. | | | | |
| | | | | Title | SG-5080 | Drawing NO. | Scale | Page 8 |
| | | | | Electrical Components List 2 | SG-5080-CE-400V-B-8 | Standard | CE | Totality 9 Pages |
| | | | |  SHINI 信易塑料机械股份有限公司 Shini Plastics Technologies, Inc. | Voltage | 4.00V | | |
| Mark | | | | | Before modification | Modified by | Modify date | Date |
| | | | | 20170605 | | | | |
| 1 | 2 | 3 | 4 | 5 | 6 | 7 | 8 | |

