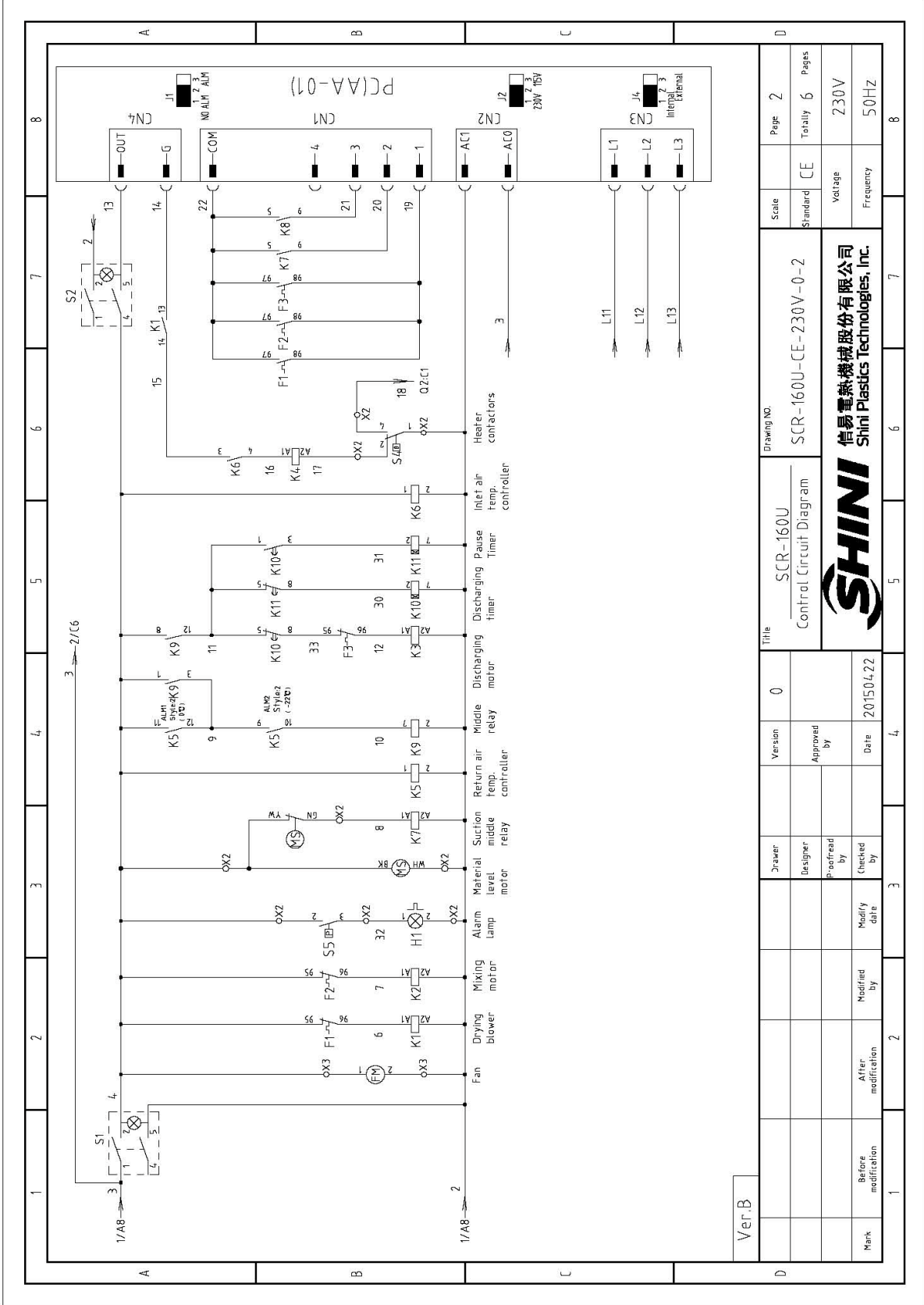


Ver.B

Drawing NO.		SCR-160U-CE-230V-0-1	
Title		Main Circuit Diagram	
Designer	Version	Scale	Page 1
Checked by	Approved by	Standard	Totally 6
Modified by	Date	Velocity	230V
Modify date	2015/04/22	Frequency	50HZ

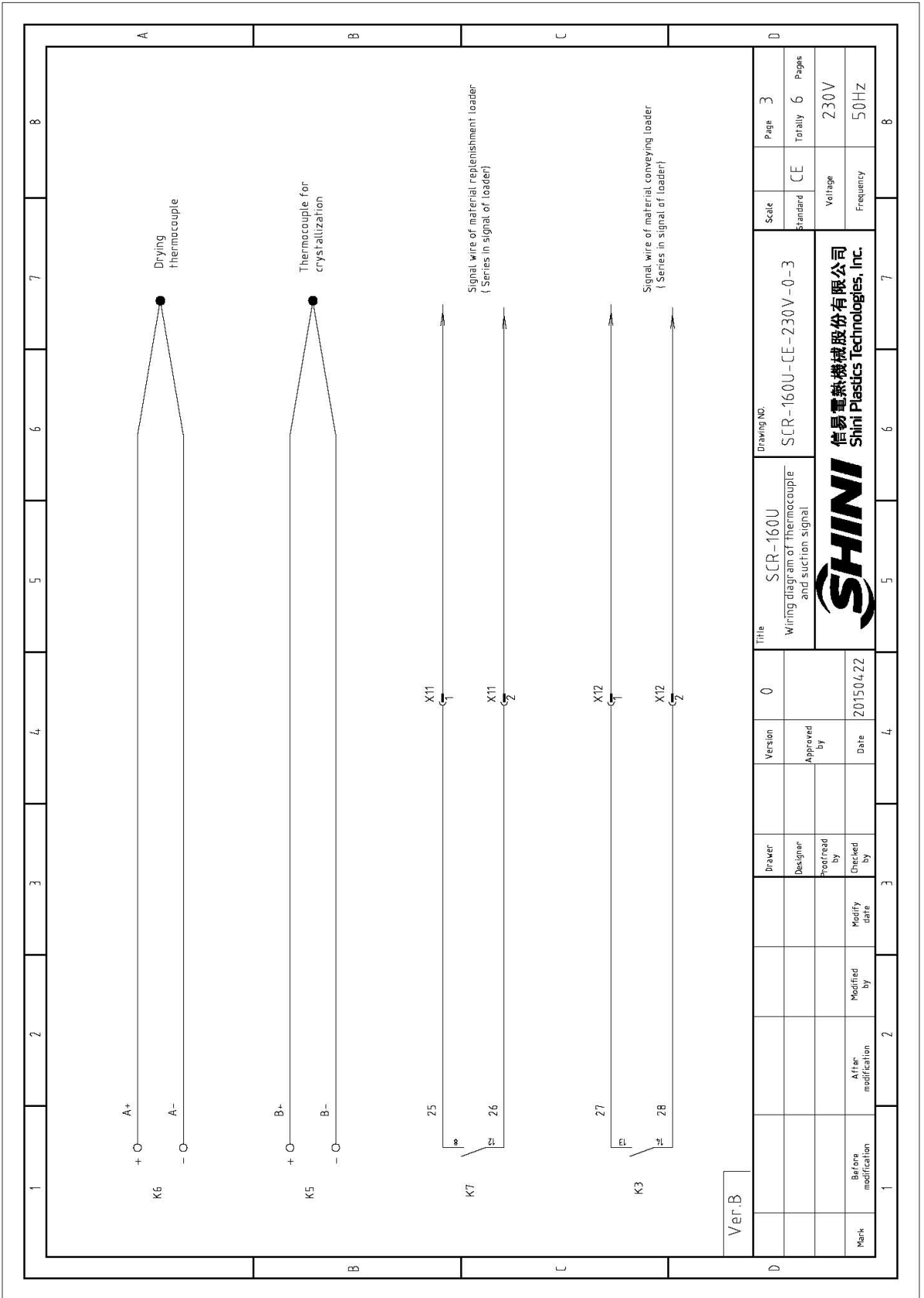


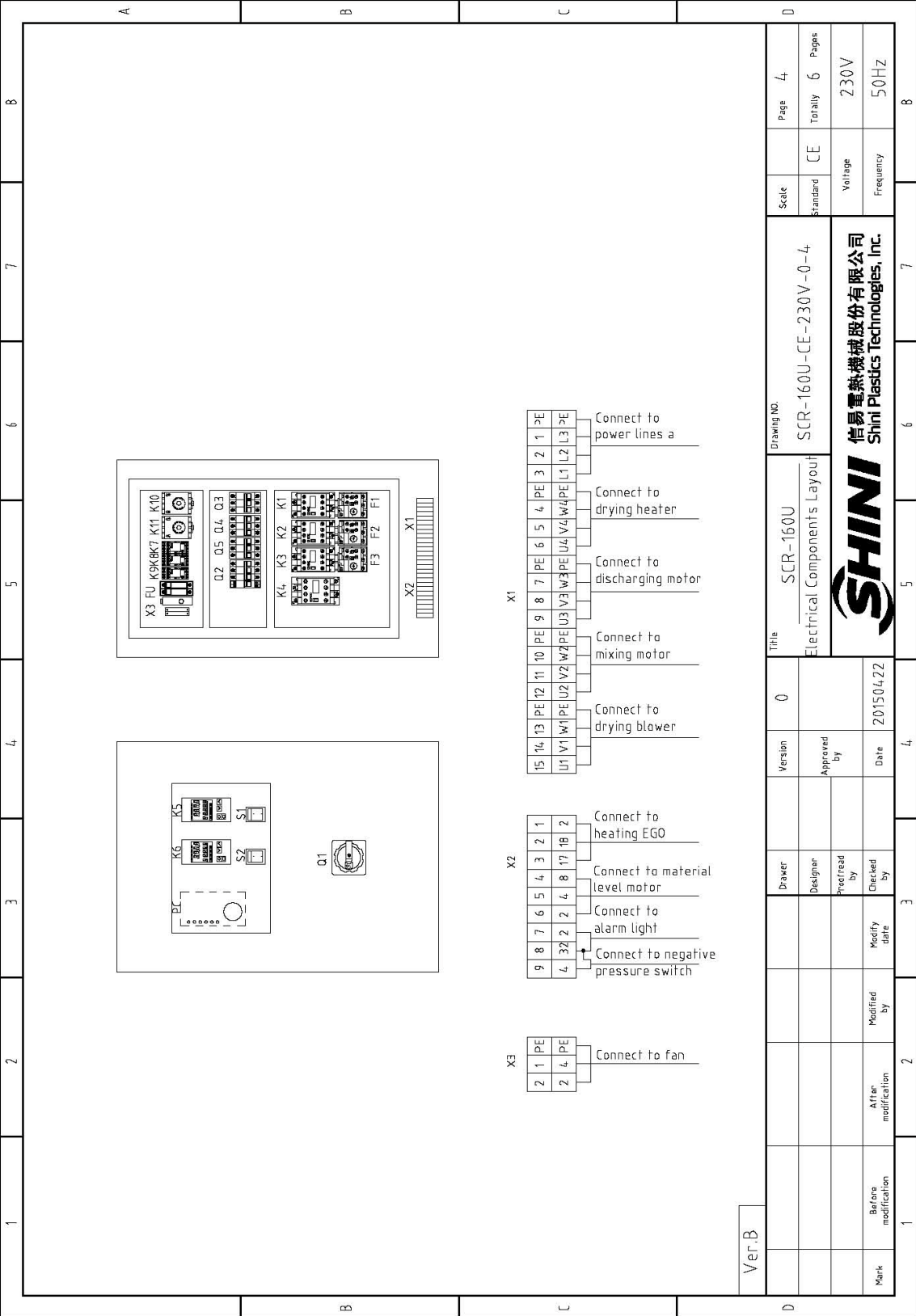


Ver.B

Title		Drawing NO.		Scale		Page	
SCR-160U Control Circuit Diagram		SCR-160U-CE-230V-0-2		Standard CE		Totally 6	
Version		Date		Voltage		Frequency	
0		20150422		230V		50Hz	
Designer		Checked by		Frequency		50Hz	
Approved by		Modify date		Frequency		50Hz	
Date		Modify date		Frequency		50Hz	
20150422							

**SHINI** 信易电热机械股份有限公司  
Shini Plastics Technologies, Inc.





Ver.B

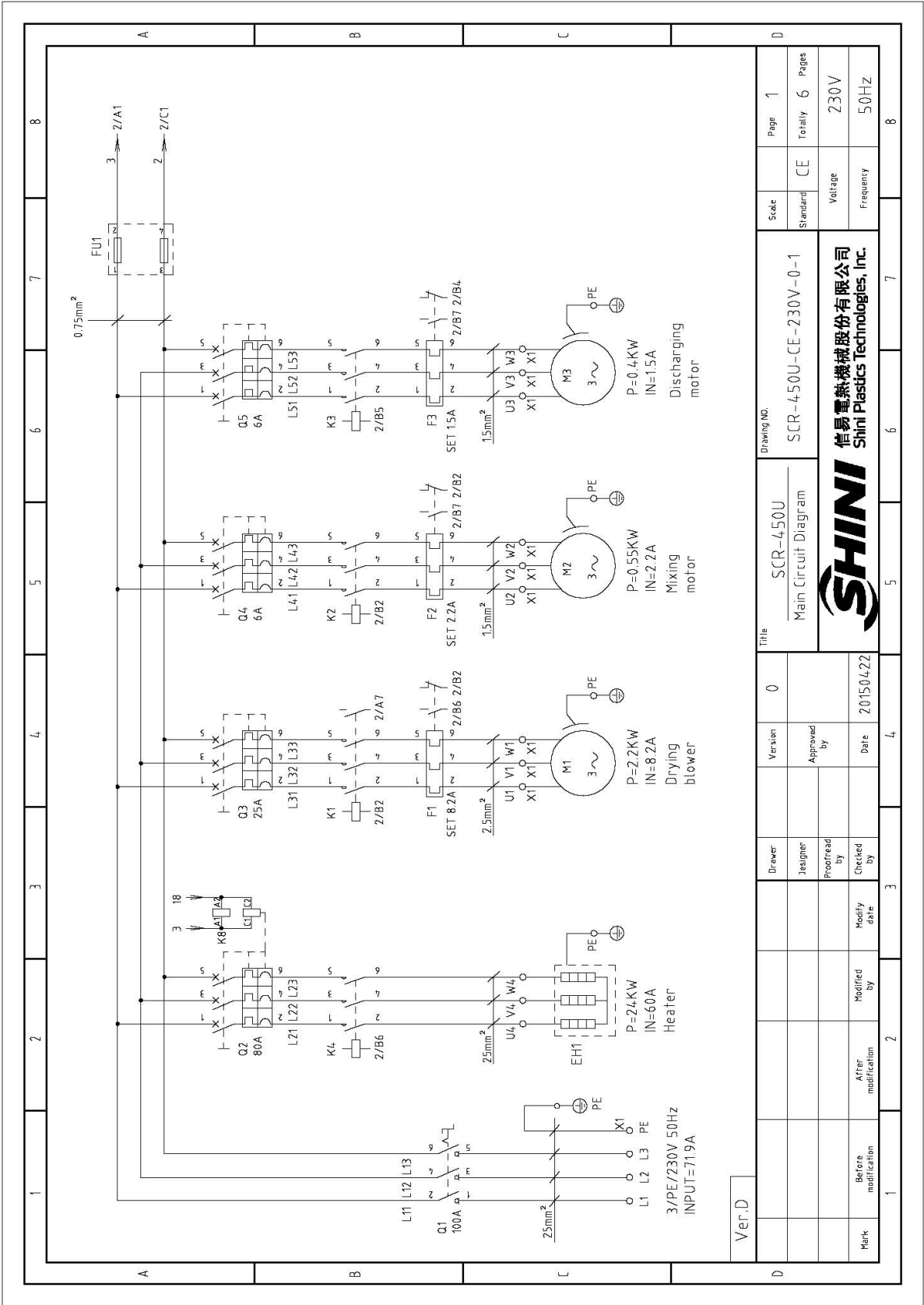
Mark	Before modification	After modification	Modified by	Modify date	Checked by	Designed by	Designer	Version	0	Title	SCR-160U Electrical Components layout	Scale	Standard	Page	4
								Approved by		Drawing No.	SCR-160U-CE-230V-0-4	Standard	CE	Totally	6
								Date	2015/04/22					Voltage	230V
														Frequency	50HZ

**SHINI**  
信易電熱機械股份有限公司  
Shini Plastics Technologies, Inc.

1		2		3		4		5		6		7		8	
NO.	Symbol	Name	Manufacturer	Type	Specification	Number	Material number	Remark							
1	Q1	Main power switch	SIEMENS	3LD2504-OTK53	63A	1	YE102504.00000								
2	Q2	Circuit breakers	TECO	BM-63C	40A	1	YE40304.003000								
3	Q3 Q4 Q5	Excitation release	CHNT	MX	230VAC	1	YE40023560000								
4	K1	Circuit breakers	TECO	BM-63C	6A	3	YE4030603000								
5	K2	Contactors	SIEMENS	3RT6016-1AN21	230V 50/60Hz	1	YE00601621000								
6	K3	Contactors	SIEMENS	3RT6016-1AN21	230V 50/60Hz	1	YE00601621000								
7	K4	Contactors	SIEMENS	3RT6016-1AN21	230V 50/60Hz	1	YE00601621000								
8	K5 K6	Temperature controller	OMRON	E5EZ	100-240V 50/60Hz	2	YE85005000000								
9	K7 K8 K9	Middle relay	WEIDMULLER	DRM270730LT	230V 50/60Hz	3	YE03270700000								
10	K10 K11	Timer relay	OMRON	H3BA-N8H	230VAC 0-300h	2	YE86300800000								
11	F1	Overload relay	SIEMENS	3RU6116-1DB0	2.2-3.2A	1	YE01160220000								
12	F2	Overload relay	SIEMENS	3RU6116-1AB0	1.1-1.6A	1	YE01160110000								
13	F3	Overload relay	SIEMENS	3RU6116-1BB0	1.4-2A	1	YE01160140000								
14	FU1	Fuse base	CHNT	RT18-32	2P	1	YE41032200000								
15	FU2	Fuse core	CHNT	10x38 500V	2A	2	YE46002000100								
16	FU3	Fuse**	YINDA	FS-10	2A	1	YE41001000000								
17	T	Transformer*	BAIYUN	IN=400V OUT=230V	500mA	1	YE70402300800								
18	PC	PCB	YUYUN	AA-01	230VAC 50/60Hz	1	YE80000100000								
19	S1 S2	Alternative switch	REAB	T120-55	4P WH	2	YE102104.00000								
20	MS	Material level motor	SIPAI	SR-80-T	250VAC	1	YE15000200000	(1)							
21	S4	Overheat protector	EGO	-----	250V 5A	1	YE21503000000	(1)							
22	S5	Negative pressure switch	----	----	----	1	----	(1)							
23	S6 S7	Thermocouple	SHINI	----	K	2	----	(1)							
24	FM1	Fan	SUNON	DP200A	230V 50/60Hz	1	YM60121200400	(1)							
Ver.B Note: (1) Means not part of control box. /* means possible broken parts. ** means easy broken part. and spare backup is suggested.															
		Drawer		version		0		Title		Drawing NO.		Scale		Page 5	
		Designer		Approved by				SCR-160U		SCR-160U-CE-230V-0-5		Standard		CE	
		Prepared by		Date		20150422		Electrical Components List 1				Voltage		230V	
		Checked by		Modify date								Frequency		50HZ	
Mark		Before modification		After modification											
1		2		3		4		5		6		7		8	



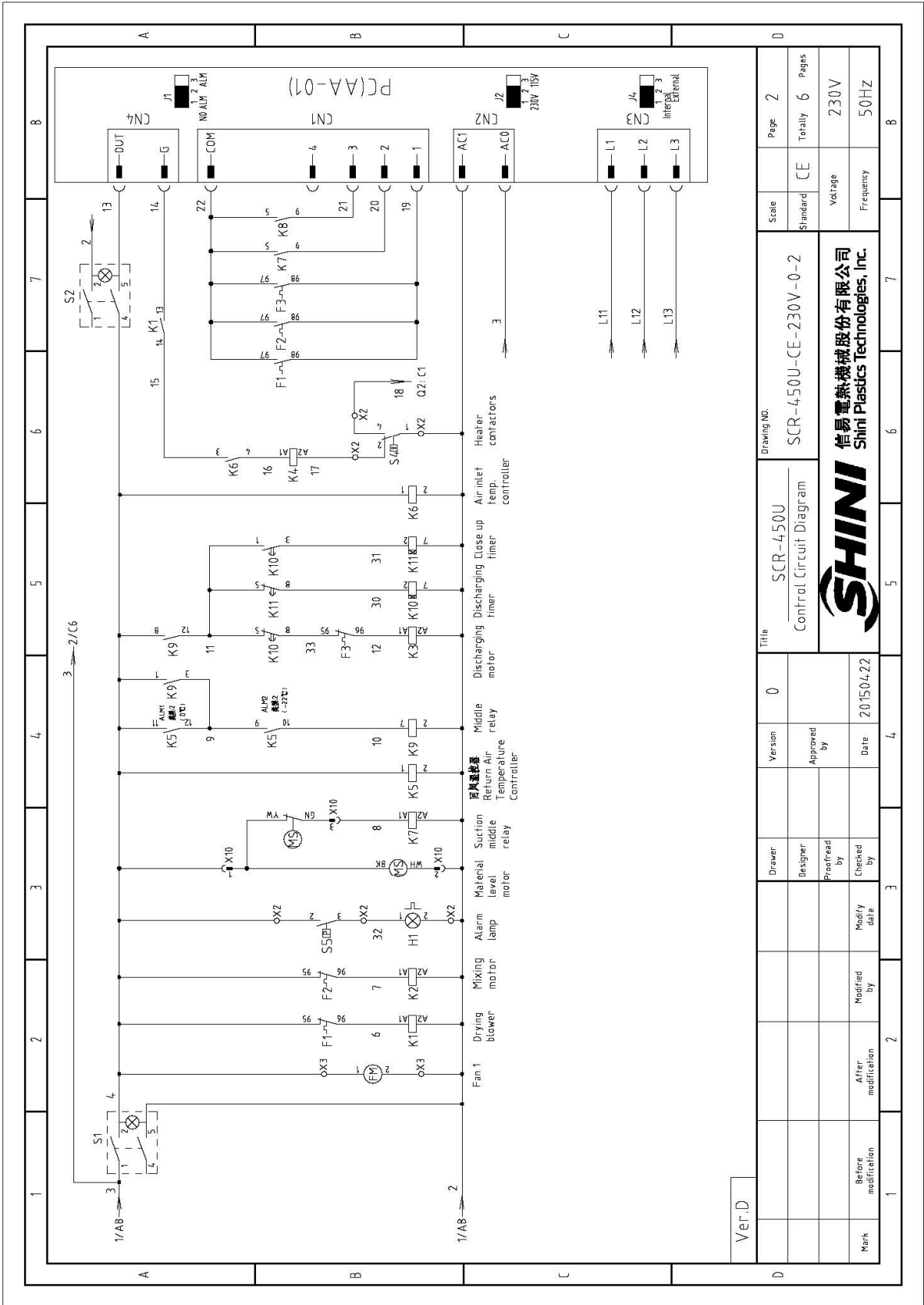
1		2		3		4		5		6		7		8	
No.	Symbol	Name	Manufacturer	Type	Specification	Number	Material number	Remark							
26	H1	Pulse indicator	----	LED-3051	230VAC 50HZ	1	YE83305100200	(1)							
27	X1		PHOENIX	10mm <sup>2</sup>	76A	6	YE61100000000								
28				10mm <sup>2</sup> PE		2	YE61103500000								
29		Terminal board	PHOENIX	2.5mm <sup>2</sup>	32A	9	YE61250040000								
30				2.5mm <sup>2</sup> PE		3	YE61253500000								
31	X2	Terminal board	PHOENIX	2.5mm <sup>2</sup>	32A	9	YE61250040000								
32	X3	Terminal board	PHOENIX	2.5mm <sup>2</sup>	32A	2	YE61253500000								
33				2.5mm <sup>2</sup> PE		1	YE61253500000								
34	X11 X12	Metal Tie in	----	DF25-3	-----	2	YE68025300200	(1)							
35	M1	Blower	SHINI	-----	0.55KW 230V 50Hz	1	-----	(1)							
36	M2	Motor	SHINI	-----	0.25KW 230V 50Hz	1	-----	(1)							
37	M3	Motor	SHINI	-----	0.4KW 230V 50Hz	1	-----	(1)							
38	EH1	Heater**	SHINI	-----	12KW 230V 50Hz	1	-----	(1)							
Note: (1) Means not part of control box. /*means possible broken parts. ** means easy broken part. and spare backup is suggested Please confirm the version of manual before placing the purchase order to guarantee that the item number of the spare part is in accordance with the real object.															
Ver.B				Version		0		Title		SCR-160U Electrical Components List 2		Drawing No.		SCR-160U-CE-230V-0-6	
		Drawer		Designer		Approved by		Scale		Standard		CE		Page 6	
		Modified by		Checked by		Date		Voltage		Frequency		230V		50HZ	
Mark		Before modification		After modification		Modify date		SHINI		SHINI Shini Plastics Technologies, Inc.		Totaly 6		Pages 6	
1		2		3		4		5		6		7		8	



Ver.D

Drawing No.		Scale		Page	
SCR-450U		Standard CE		1	
Title		Standard		Totaly	
Main Circuit Diagram		CE		6	
Version		Voltage		Frequency	
0		230V		50Hz	
Approved by		Date		Date	
		2015/04/22			
Checked by		Modified by		Modified date	
Before modification		After modification		Mark	

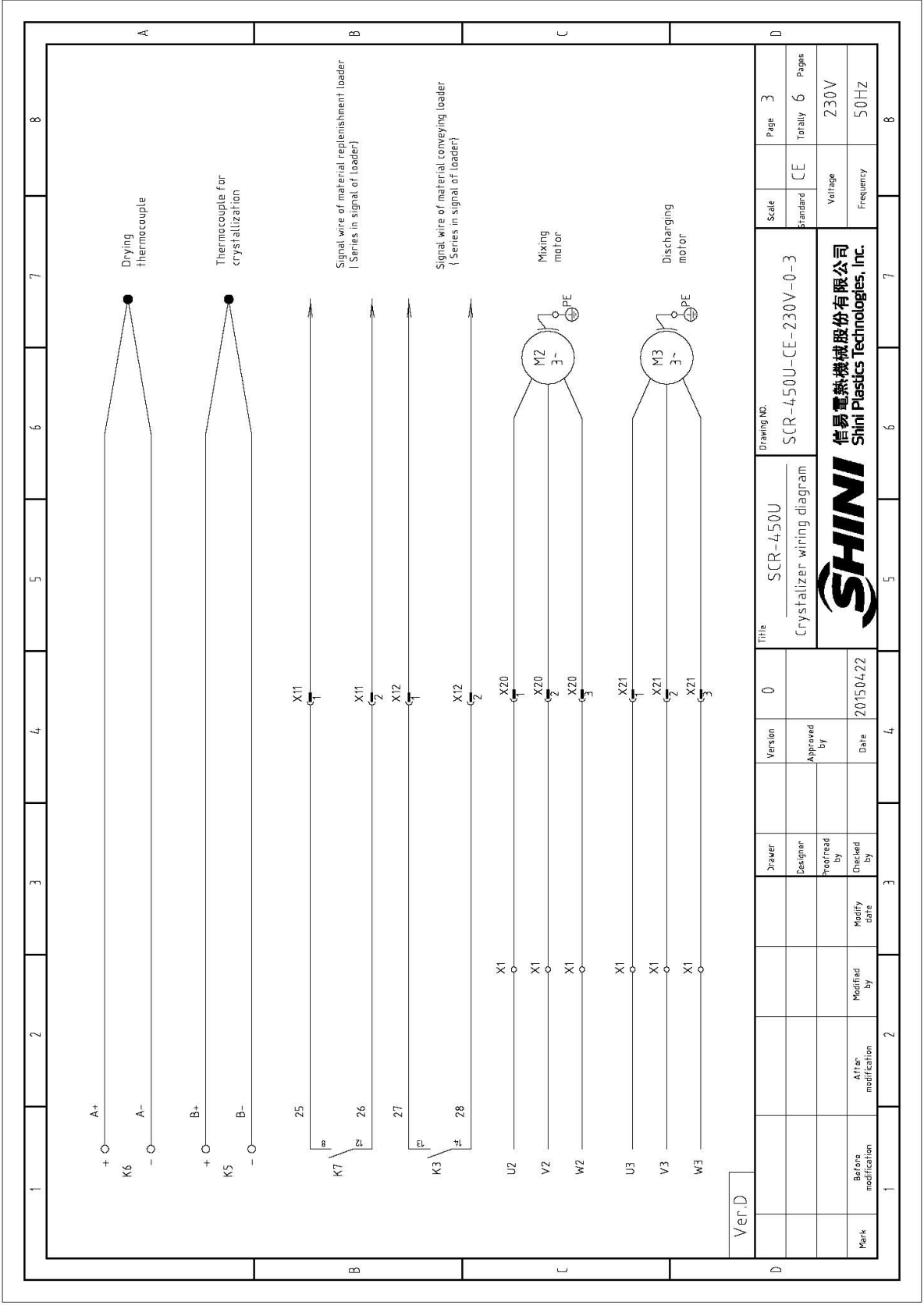


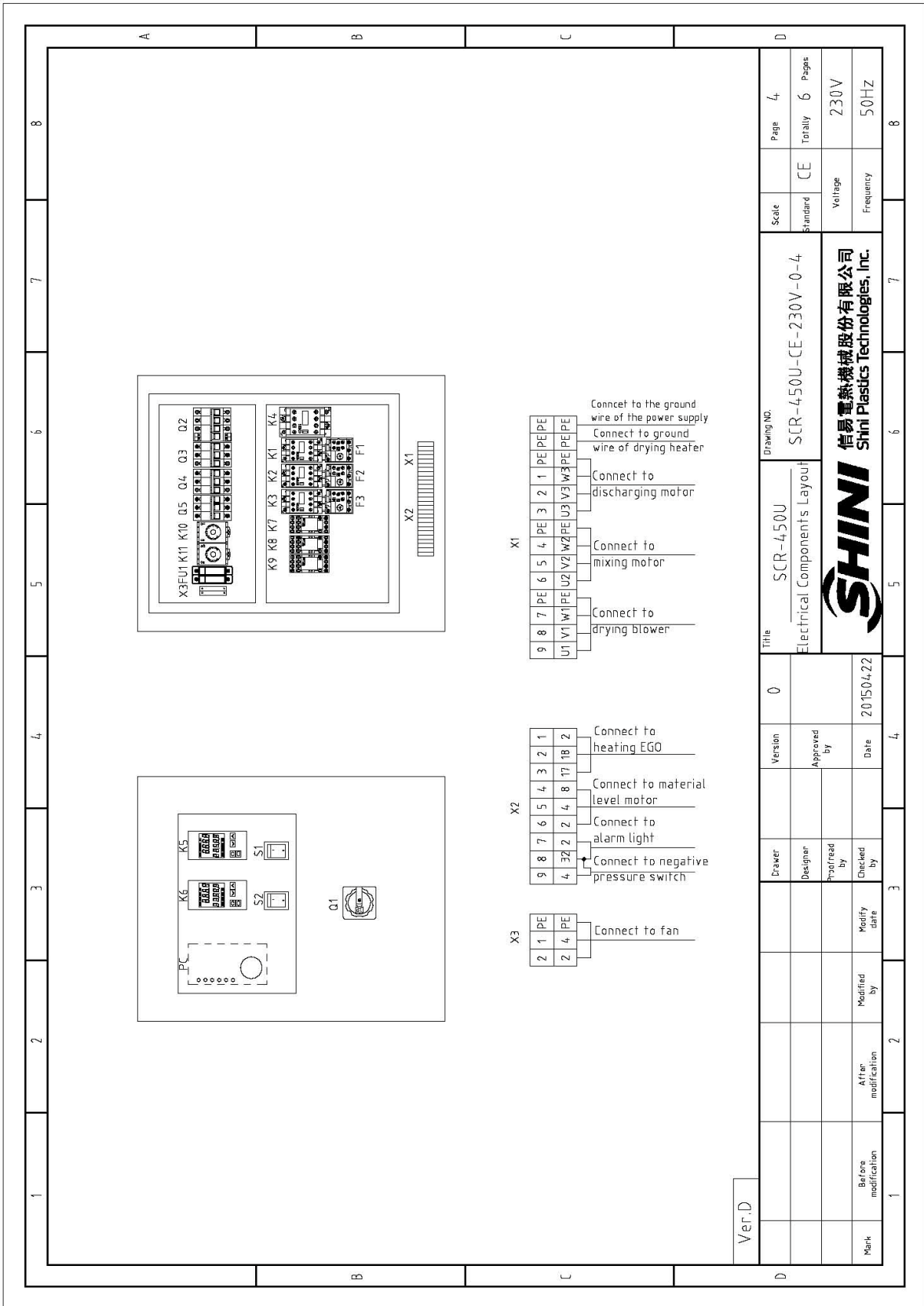


D	Scale	Page	2
		Totality	6
D	Standard	CE	230V
		Frequency	50HZ
Title		SCR-450U-CE-230V-0-2	
Drawing No.		SCR-450U-CE-230V-0-2	
Version		0	
Drawer	Designer	Approved by	Date
	Proofread by		20150422
Mark	Before modification	Modified by	Modify date
	After modification		

**SHINI**  
信易電熱機械股份有限公司  
Shini Plastics Technologies, Inc.







Ver:D

Mark	Before modification	After modification	Modified by	Modify date	Checked by	Approved by	Designer	Drawer	Version	0	Title	SCR-450U Electrical Components Layout	Drawing No.	SCR-450U-CE-230V-0-4	Scale	Standard	CE	Page	4	
																		Totally	6	
																				230V
																				50HZ

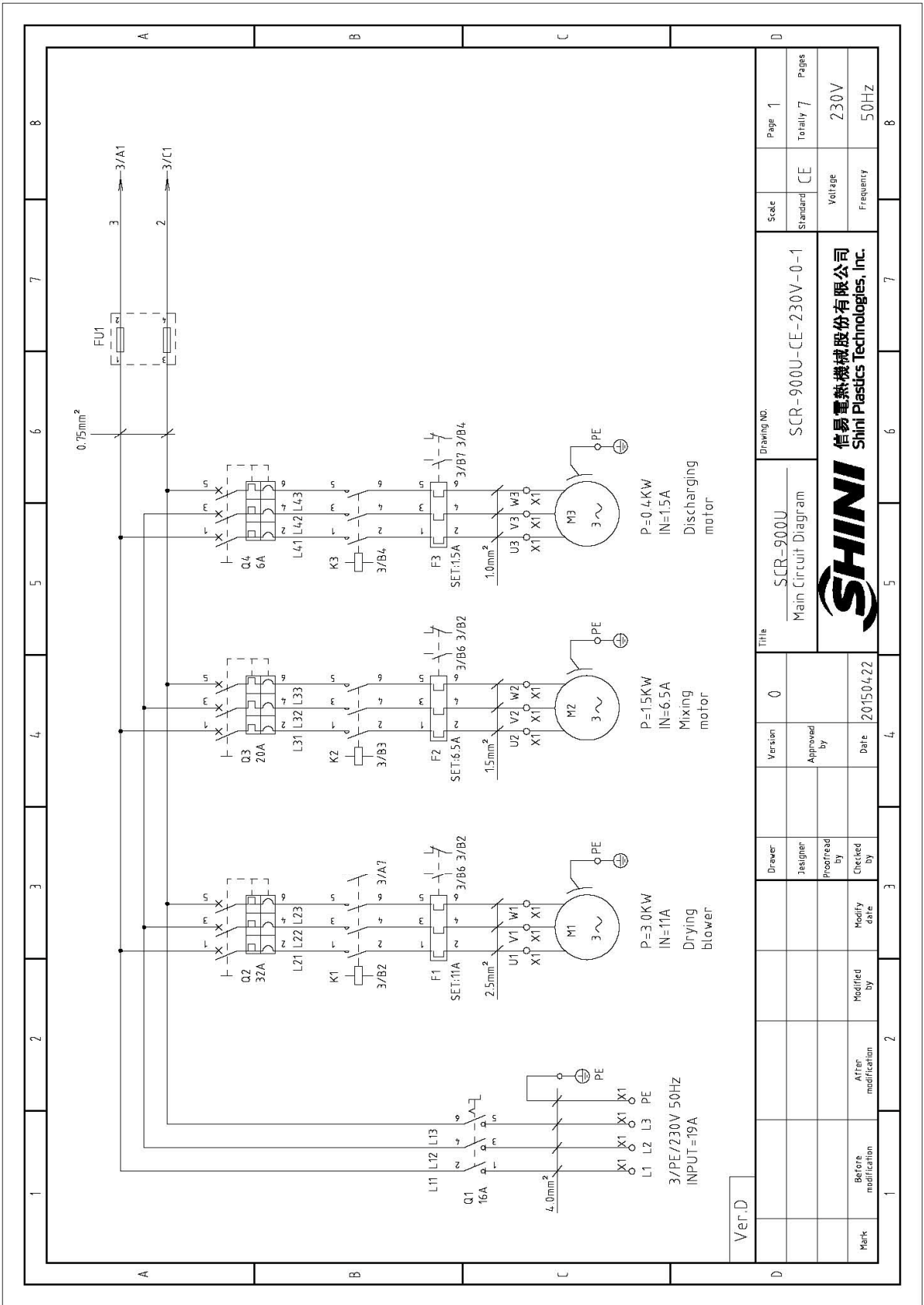


信易電熱機械股份有限公司  
Shini Plastics Technologies, Inc.

1		2		3		4		5		6		7		8	
NO.	Symbol	Name	Manufacturer	Type	Specification	Number	Material number	Remark							
1	Q1	Main power switch	MOELLER	P3-100/EA/SVB	100A	1	YE1001000000								
2	Q2	Circuit breakers	TECO	BM-100D	80A	1	YE40308003000								
A	3	Excitation release	CHNT	MX	230VAC	1	YE40023560000								
4	Q3	Circuit breakers	TECO	BM-63C	25A	1	YE40302503000								
5	Q4 Q5	Circuit breakers	TECO	BM-63C	6A	2	YE40300603000								
6	K1 K2 K3	Contactors	SIEMENS	3RT6016-1AN21	230V 50/60Hz	3	YE00601621000								
7	K4	Contactors	SIEMENS	3RT5045-1AN20	230V 50/60Hz	1	YE00504500000								
8	K5 K6	Temperature controller	OMRON	E5EZ	100-240V 50/60Hz	2	YE85005000000								
9	K7 K8 K9	Middle relay	WEIDMULLER	DRW270730LT	230V 50/60Hz	3	YE03270700000								
10	K10 K11	Timer relay	OMRON	H3BA-N8H	230VAC 0-300h	2	YE86300800000								
B	11 F1	Overload relay	SIEMENS	3RU6116-1JB0	7-10A	1	YE01167100000								
12	F2	Overload relay	SIEMENS	3RU6116-1DB0	2.2-3.2A	1	YE01160220000								
13	F3	Overload relay	SIEMENS	3RU6116-1BB0	1.4-2A	1	YE01160140000								
14	FU1	Fuse base	CHNT	RT18-32	2P	1	YE41032200000								
15		Fuse core	CHNT	10x38 500V	2A	2	YE46002000100								
16	PC	PCB	YUYUN	AA-01	230VAC 50/60Hz	1	YE800000100000								
17	S1 S2	Alternative switch	REAB	T120-55	4P WH	2	YE10210400000								
18	MS	Material level motor	SIPAI	SR-80-T	250VAC	1	YE15000200000	(1)							
C	19 S4	Overheat protector	EGO	-----	250V 5A	1	YE21503000000	(1)							
20	S5	Negative pressure switch	-----	-----	-----	1	-----	(1)							
21	S6 S7	Thermocouple	SHINI	-----	K	2	-----	(1)							
22	FM1	Fan	SUNON	DP200A	230V 50/60Hz	1	YM60T21200400	(1)							
23	H1	Pulse indicator	----	LED-3051	230VAC 50HZ	1	YE83305100200	(1)							
24	X1	Terminal board	PHOENIX	16mm <sup>2</sup> PE		2	YE61163500000								
25		Terminal board	PHOENIX	2.5mm <sup>2</sup>	41A	9	YE61250040000								
Ver.D		Note:(1) Means not part of control box. / * means possible broken parts. **means easy broken part, and spare backup is suggested.													
D		Drawing No. SCR-450U Electrical Components List 1													
		Designer		Version		Title		Scale		Page		5		8	
		Approved by		0		SCR-450U-CE-230V-0-5		Standard		CE		Voltage		230V	
		Proofread by				Electrical Components List 1		Stand		Totally		Frequency		50HZ	
Mark		Before modification		After modification		Modified by		Date		2015/04/22					
1		2		3		4		5		6		7		8	

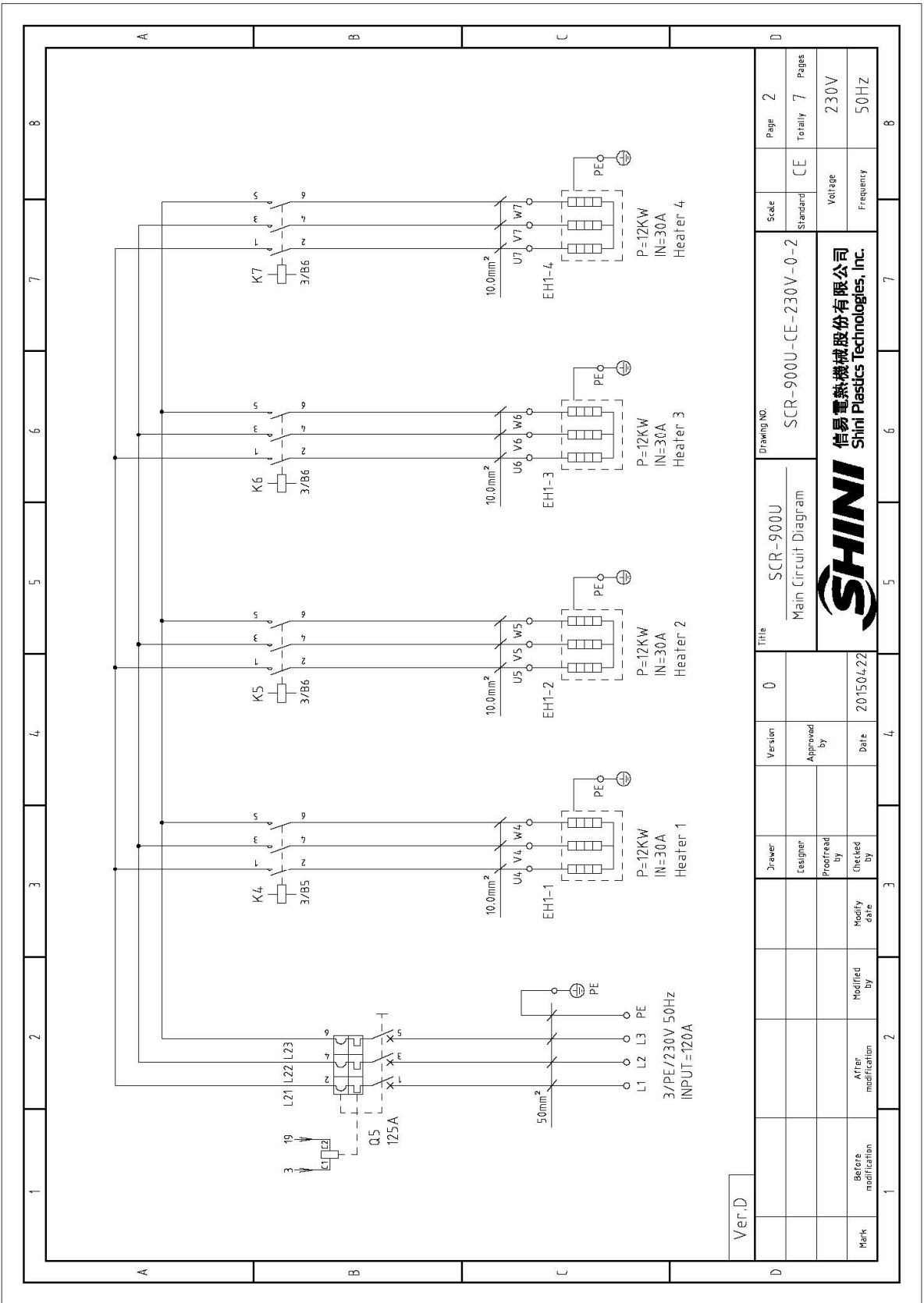


1		2		3		4		5		6		7		8	
No.	Symbol	Name	Manufacturer	Type	Specification	Number	Material number	Remark							
26				2.5mm <sup>2</sup> PE		3	YE61253500000								
27	X2	Terminal board	PHOENIX	2.5mm <sup>2</sup>	32A	9	YE61250040000								
28	X3	Terminal board	PHOENIX	2.5mm <sup>2</sup>	32A	2	YE61253500000								
29				2.5mm <sup>2</sup> PE		1	YE61253500000								
30	X10	Heavy duty connector	SIBAS	HDC-HE-04	4.00V 5A	1	YE68041000000/YE68041000100	(1)							
31	X11 X12	Metal Tie in	----	DF25-3	-----	2	YE68025300200	(1)							
32	X20 X21	Waterproof connectors	CEE	RS-314	4.00V 16A	2	YE63314100000	(1)							
33	M1	Blower	SHINI	-----	2.2KW 230V 50Hz	1	----	(1)							
34	M2	Motor	SHINI	-----	0.55KW 230V 50Hz	1	----	(1)							
35	M3	Motor	SHINI	-----	0.4KW 230V 50Hz	1	----	(1)							
36	EH1	Heater**	SHINI	-----	24KW 230V 50Hz	1	----	(1)							
A															
B															
C															
D															
<p>Note: (1) Means not part of control box. / * means possible broken parts. ** means easy broken part. and spare backup is suggested. Please confirm the version of manual before placing the purchase order to guarantee that the item number of the spare part is in accordance with the real object.</p>															
Ver.D															
				Title		Drawing No.		Scale		Page		6		8	
				SCR-4.50U		SCR-4.50U-CE-230V-0-6		CE		Totally		6		Pages	
				Electrical Components List 2						Voltage		230V		Frequency	
				Date		2015/04/22									
				SHINI		信易電熱機械股份有限公司		SHINI		Shini Plastics Technologies, Inc.					
Mark	Before modification	After modification	Modified by	Modify date	Checked by	Proofread by	Designer	Version	0	Approved by					



Ver:D		Title		Drawing No.		Scale		Page 1	
		SCR-900U		SCR-900U-CE-230V-0-1		CE		Totally 7	
		Main Circuit Diagram						Voltage	
								Frequency	
								230V	
								50Hz	
Mark		Before modification		After modification		Modified by		Modify date	
		Designer		Prepared by		Checked by		Date	
								20150422	
		Version		Approved by					
		0							

**SHINI**  
 信易電熱機械股份有限公司  
 Shini Plastics Technologies, Inc.

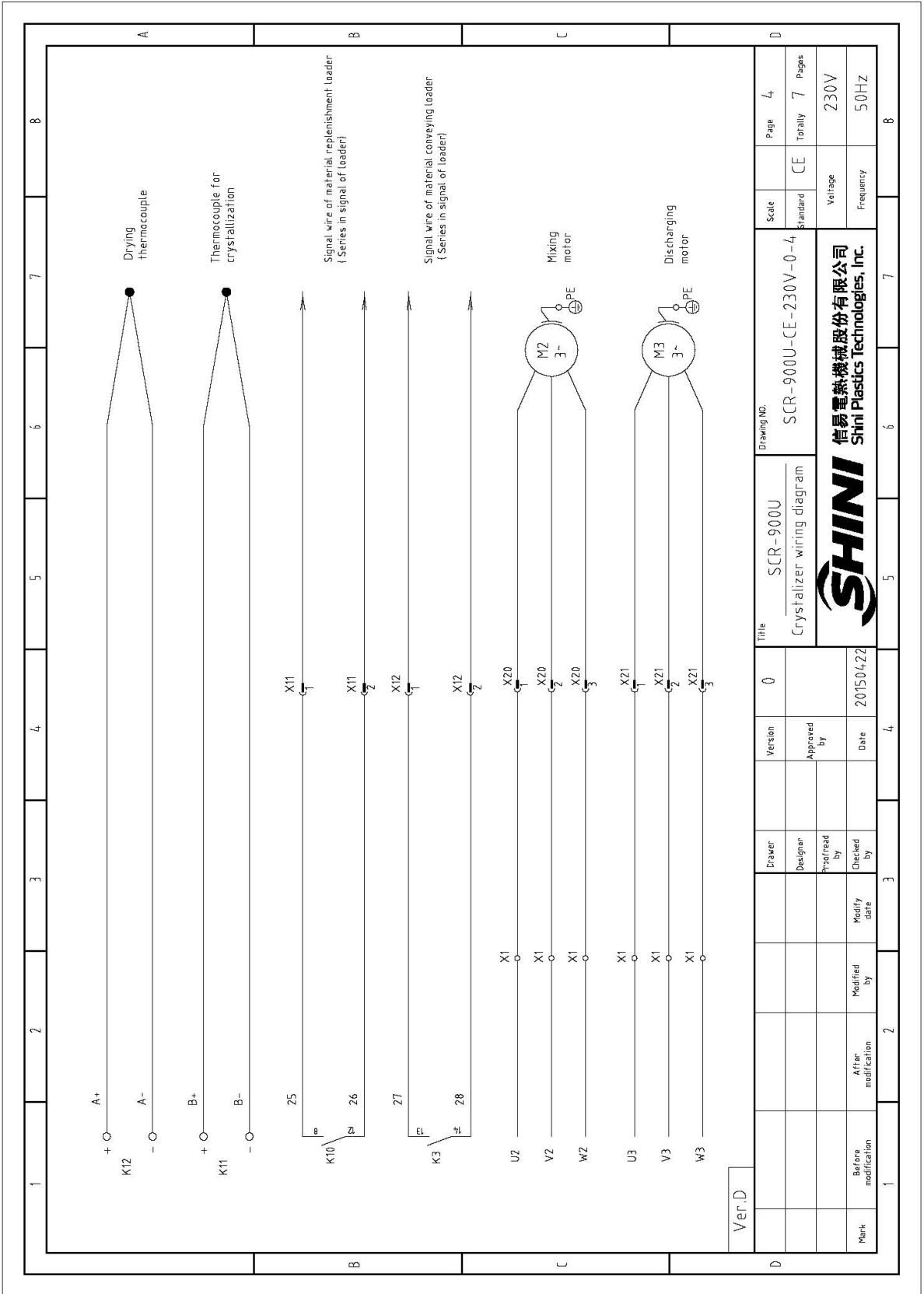


Ver.D

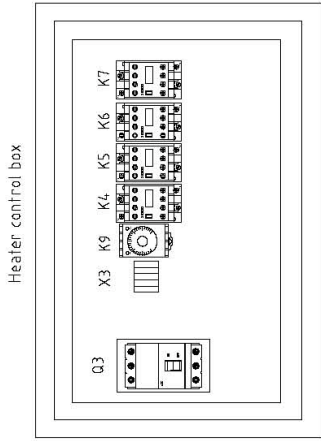
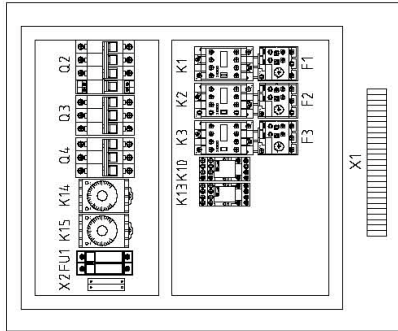
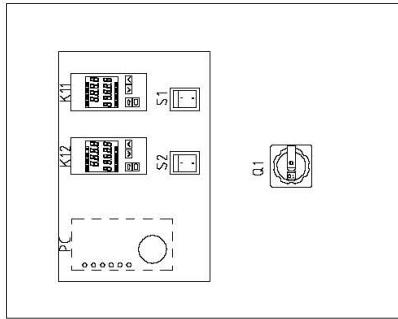
Mark	Before modification	After modification	Modified by	Modify date	Checked by	Proofread by	Designer	Drawer	Version	0	Title	SCR-900U Main Circuit Diagram	Drawing NO.	SCR-900U-CE-230V-0-2	Scale	CE	Page	2
Mark				20150422					Approved by								Totally	7
									Date								Voltage	230V
																	Frequency	50Hz



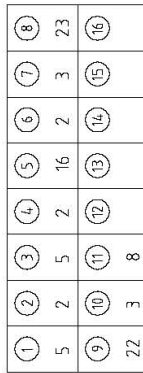








X10 Heavy-duty connector wiring diagram



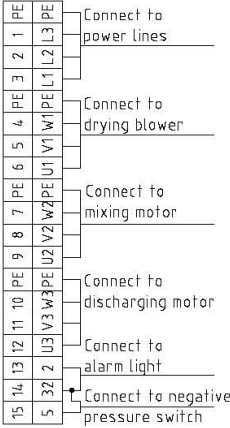
X2



X3



X1



Ver.D

Mark	Before modification	After modification	Modified by	Modify date	Checked by	Designed by	Drawer	Version	0	Title	SCR-900U	Scale	CE	Page	5
Approved by										Electrical Components Layout	SCR-900U-CE-230V-0-5	Standard	CE	Totally	7
Date	20150422													Voltage	230V
														Frequency	50HZ

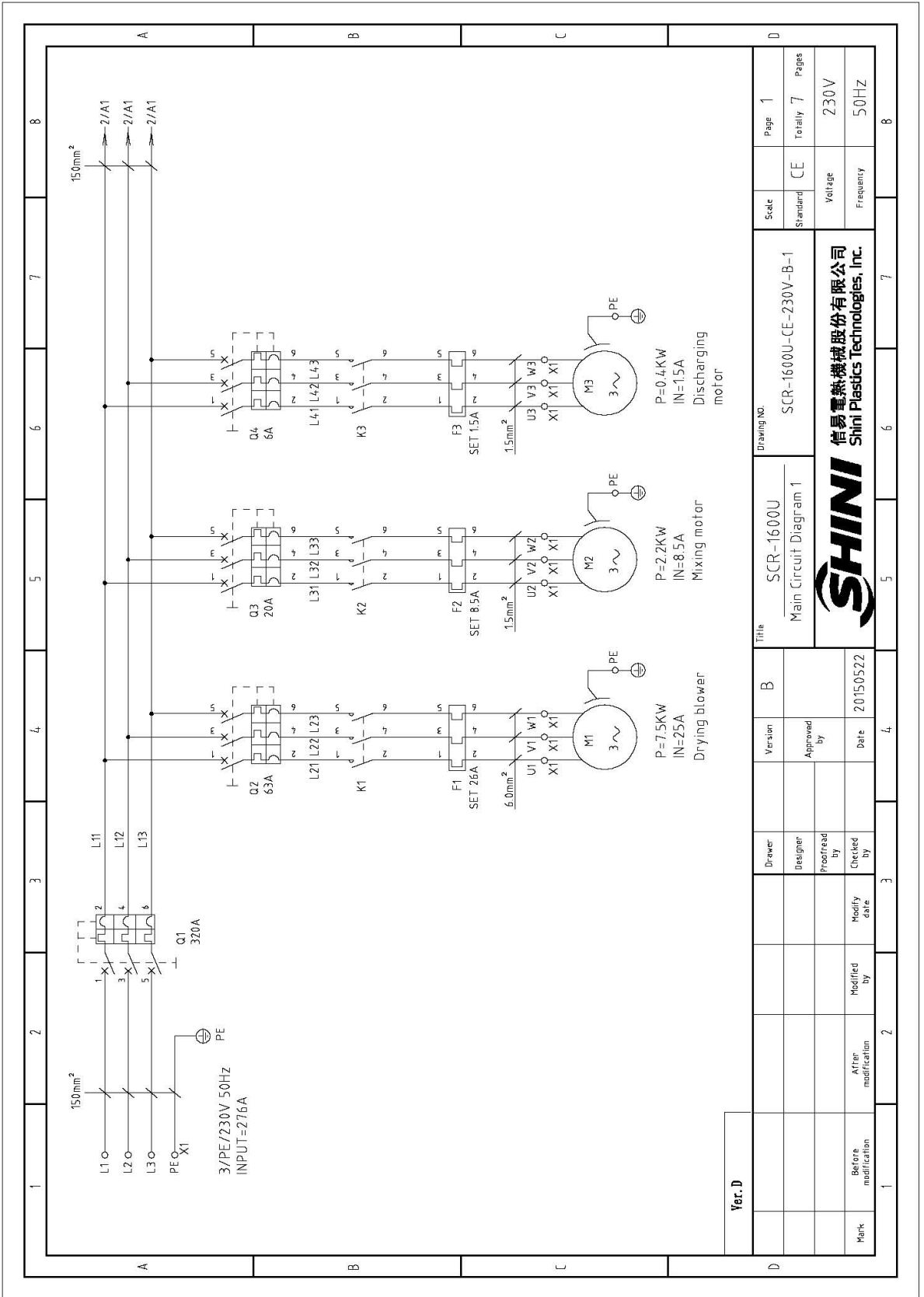
**SHINI**  
信易電熱機械股份有限公司  
Shini Plastics Technologies, Inc.

1	2		3	4	5	6	7	8
NO.	Symbol	Name	Manufacturer	Type	Specification	Number	Material number	Remark
A	1	Q1	Main power switch	MOELLER	TO-2-1/EA/SVB	1	YE10021160000	
	2	Q2	Circuit breakers	TECO	BM-63C	1	YE40303203000	
	3	Q3	Circuit breakers	TECO	BM-63C	1	YE40302003000	
	4	Q4	Circuit breakers	TECO	BM-63C	1	YE40300603000	
	5	Q5	Breaker interlock	ABB	A1A 125 TMF/25	1	YE41161400000	
	6		Excitation release	ABB	SOR-C	1	YE40101600000	
	7	K1	Contactors	SIEMENS	3RT6018-1AN21	1	YE00601800000	
	8	K2 K3	Contactors	SIEMENS	3RT6016-1AN21	2	YE00601621000	
	9	K4 K5 K6 K7	Contactors	SIEMENS	3RT6028-1AN20	4	YE00602822000	
	10	K9	Timer relay	YUYUN	TH3M-NAB	1	YE86300300000	
	11	K10 K13	Middle relay	WEIDMULLER	DRM270730LT	2	YE03270700000	
	12	K11 K12	Temperature controller	OMRON	E5EZ	2	YE85005000000	
	13	K14 K15	Timer relay	YUYUN	TH3M-NAB	2	YE86300300000	
	14	F1	Thermo overload relay	SIEMENS	3RU6116-4AB0	1	YE01611640000	
	15	F2	Thermo overload relay	SIEMENS	3RU6116-1HB0	1	YE01160550000	
	16	F3	Thermo overload relay	SIEMENS	3RU6116-1BB0	1	YE01160740000	
	17	FU1	Fuse base	CHNT	RT18-32	1	YE41032200000	
	18		Fuse core	CHNT	10x38 500V	2	YE46002000100	
	19	PC	PCB	YUYUN	AA-01	1	YE80000100000	
	20	S1 S2	Alternative switch	REAB	T120-55	2	YE10210400000	
	21	MS	Material level motor	SIPAI	SR-80-T	1	YE15000200000	(1)
	22	S4	Thermal protector	EGO	250V 5A	1	YE21503000000	(1)
	23	S5	Negative pressure switch	----	----	1	----	(1)
	24	S6 S7	Thermocouple	SHINI	K	2	----	(1)
	25	FMT FMZ	Fan	SUNON	DP200A	2	YM60121200400	(1)
	Ver.D		Note: (1) Means not part of control box. /* means possible broken parts. **means easy broken part. and spare backup is suggested.					
			Title	SCR-900U	Electrical Components List 1	SCR-900U-CE-4.00V-0-6	Scale	Page
			Version	0			Standard	Totally
			Designer				CE	7
			Proofread by				Voltage	Pages
			Checked by				Frequency	230V
			Modify date	20150422				50HZ
	Mark	Before modification	After modification					



1		2		3		4		5		6		7		8	
NO.	Symbol	Name	Manufacturer	Type	Specification	Number	Material number	Remark							
26	H1	Pulse indicator	----	LED-3051	230VAC 50HZ	1	YE83305100200	(1)							
27	X1	Terminal board	PHOENIX	4.0mm <sup>2</sup>	32A	3	YE61040000000								
28				4.0mm <sup>2</sup> PE		1	YE61043500000								
29				2.5mm <sup>2</sup>	32A	12	YE61250040000								
30				2.5mm <sup>2</sup> PE		3	YE61253500000								
31	X2	Terminal board	PHOENIX	2.5mm <sup>2</sup>	32A	2	YE61250040000								
32				2.5mm <sup>2</sup> PE		1	YE61253500000								
33	X3	Terminal board	PHOENIX	2.5mm <sup>2</sup>	32A	18	YE61250040000								
34	X10	Heavy duty connector	SIBAS	HDC-HE-16	4.00V 5A	1	YE68161600000	(1)							
35	X11 X12	Metal Tie in	----	DF25-3	----	2	YE68025300200	(1)							
36	X20 X21	Waterproof connectors	CEE	RS-314	4.00V 16A	2	YE63314100000	(1)							
37	M1	Blower	SHINI	----	3KW 230V 50HZ	1	----	(1)							
38	M2	Motor	SHINI	----	1.5KW 230V 50HZ	1	----	(1)							
39	M3	Motor	SHINI	----	0.4KW 230V 50HZ	1	----	(1)							
40	EH1-EH4	Heater**	SHINI	----	12KW 230V 50HZ	4	----	(1)							
Note: (1) Means not part of control box. /* means possible broken parts. ** means easy broken part. and spare backup is suggested. Please confirm the version of manual before placing the purchase order to guarantee that the item number of the spare part is in accordance with the real object.															
Ver.D															
		Title		Version		0		Drawing NO.		SCR-900U		SCR-900U-CE-230V-0-7		Scale	
		Electrical Components List 2		Designer		Approved by		Standard		CE		Voltage		230V	
		Date		2015/04/22				Frequency		50HZ					
Mark		Before modification		After modification		Modified by		Modify date		Checked by		Date		2015/04/22	
1		2		3		4		5		6		7		8	



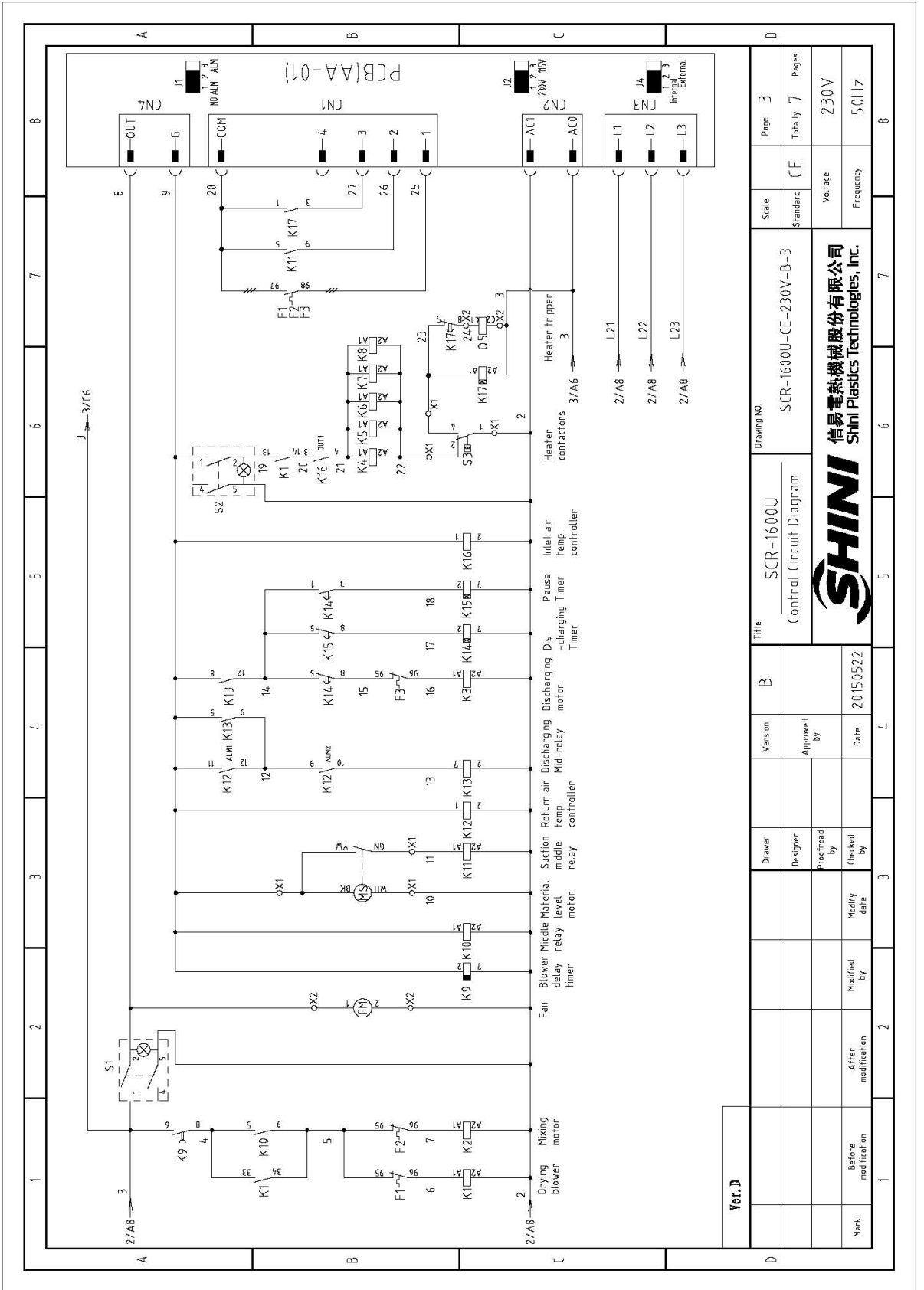


Ver. D

Mark	Before modification	Modified by	Modify date	Checked by	Date	Approved by	Version	B	Title	SCR-1600U Main Circuit Diagram 1	Drawing No.	Page 1	Scale	Standard	CE	Totally 7	Pages
	After modification											20150522					

**SHINI**  
信易電熱機械股份有限公司  
Shini Plastics Technologies, Inc.





Ver. D

Title		SCR-1600U Control Circuit Diagram		Drawing No.		SCR-1600U-CE-230V-B-3	
Version		B		Scale		CE	
Designer		Proofread by		Standard		Voltage	
Date		20150522		Pages		7	
Checked by		Modified by		Frequency		50HZ	
After modification		Date		Totaly		230V	
Before modification		20150522		Page		3	
Mark		Modified by		Page		3	
After modification		Date		Totaly		7	
Before modification		20150522		Voltage		230V	
Date		20150522		Frequency		50HZ	









1	2	3	4	5	6	7	8	
No.	Symbol	Name	Manufacturer	Type	Specification	Number	Material number	Remark
1	Q1	Breaker interlock	ABB	A3N4-00TME320/32003PFF	320A	1	YE415034.00000	
2	Q2	Circuit breakers	TECO	BM-63C/3063S	63A	1	YE40306303000	
3	Q3	Circuit breakers	TECO	BM-63C/3020S	20A	1	YE40302003000	
4	Q4	Circuit breakers	TECO	BM-63C/3006S	6A	1	YE40300603000	
5	Q5	Breaker interlock	ABB	A3N4-00TME320/32003PFF	320A	1	YE415034.00000	
6		Excitation release	ABB	SOR-C	230VAC	1	YE40121600000	
7	K1	Contactors	SIEMENS	3RT6027-1AN20	230V 50/60Hz	1	YE00602722000	
8	K2	Contactors	SIEMENS	3RT6016-1AN21	230V 50/60Hz	1	YE00601621000	
9	K3	Contactors	SIEMENS	3RT6016-1AN21	230V 50/60Hz	1	YE00601621000	
10	K4 K5 K6 K7 K8	Contactors	SIEMENS	3RT5036-1AN20	230V 50/60Hz	5	YE00503600000	
11	K9	Timer relay	YUYUN	TRF-N 3M	230VAC	1	YE86322000000	
12	K10 K11 K13	Middle relay	WEIDMULLER	DRM270730LT	230V 50/60Hz	3	YE03270700000	
13	K12 K16	Temperature controller	OMRON	E5EC-RR2ASM-800(承載)	100-240V 50/60Hz	2	YE85005000000	
14	K14 K15 K17	Timer relay	YUYUN	TH3M-NAB	3S-60M 230VAC	3	YE86300300000	
15	F1	Overload relay	SIEMENS	3RU6126-4NB0	23-28A	1	YE01612620000	
16	F2	Overload relay	SIEMENS	3RU6116-1JB0	7-10A	1	YE01167100000	
17	F3	Overload relay	SIEMENS	3RU6116-1AB0	1.1-1.6A	1	YE01160110000	
18	FU1	Fuse**	CHNT	32A/2P	----	1	YE41032200000	
19		Fuse	CHNT	10*38 500V	1A	2	YE41001000000	
20	PCB	PCB	YUYUN	AA-01	230V 50/60Hz	1	YE80000100000	
21	S1 S2	Alternative switch	----	T120-55	4P WH	2	YE102104.00000	
22	S3	Thermal protector	TONGBAO	ZA300	250V 5A	1	----	(1)
23	S4 S5	Thermocouple	SHINI	----	K	2	----	(1)
24	FM	Fan	SUNON	DP200A	230V 50/60Hz	1	----	(1)
25	MS	Material level motor	SIPAI	SR-80-T	250VAC	1	YE15000200000	(1)
<b>Ver. D</b> Note: (1) Means not part of control box * means possible broken parts. ** means easy broken part. and spare backup is suggested								
			Title SCR-1600U Electrical Components List 1		Drawing No. SCR-1600U-CE-230V-B-6		Scale Standard	
			Version B		Approved by		Page 6	
			Designer		Proofread by		Totaly 7 Pages	
			Checked by		Date 20150522		CE	
			Modified by		Modify date		Voltage 230V	
			After modification		Frequency		50Hz	
			1		2		3	
			4		5		6	
			7		8		9	

