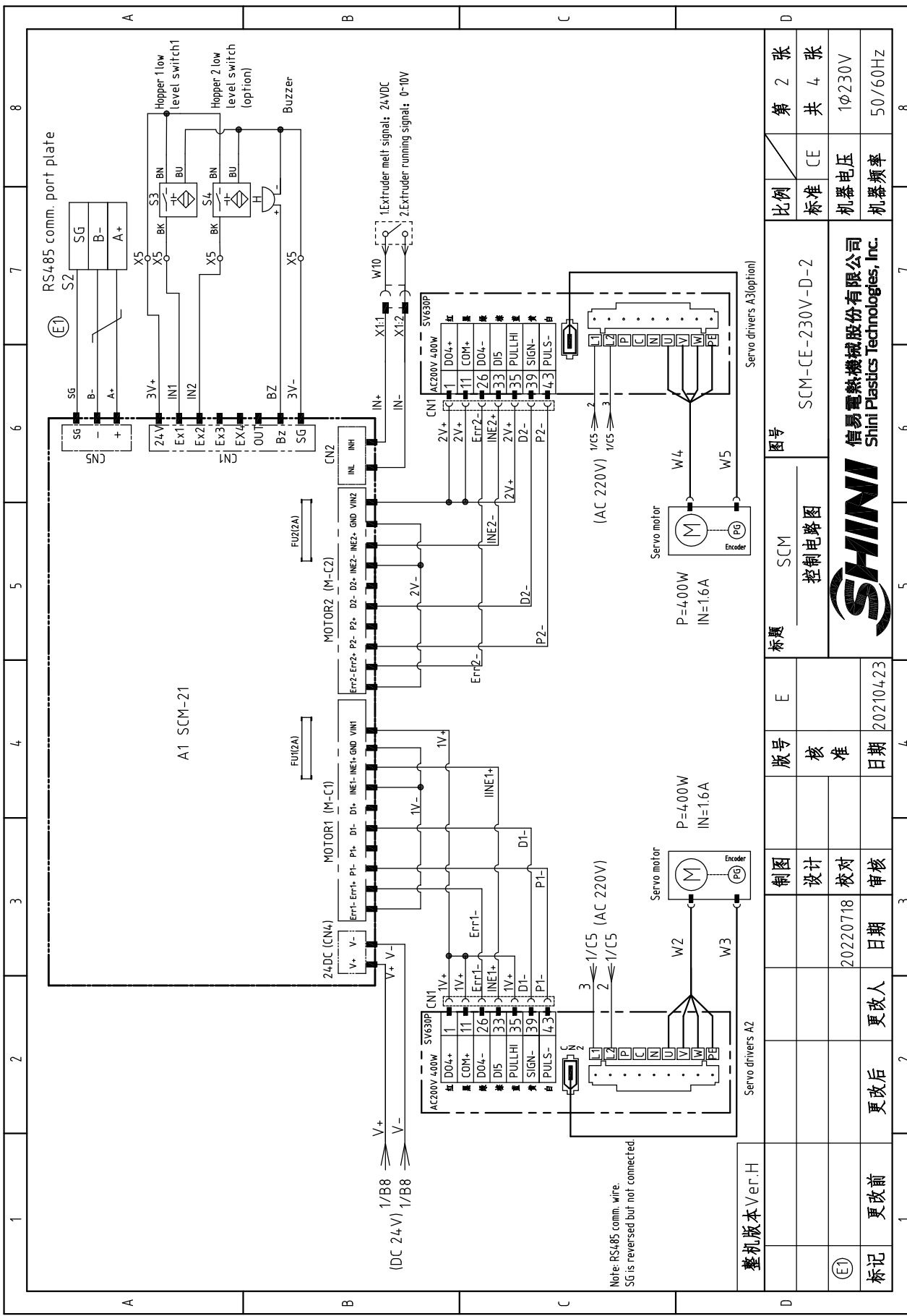


整机版本 Ver.H	制图	版号	图号	比例	第 1 张
	设计	核	SCM	标准	共 4 张
	校对	准	主电路图	CE	1φ230V
标记	日期	日期	SCM-CE-230V-D-1	机器电压	50/60Hz
更改前	更改人	20210423	信易塑料机械股份有限公司	机器频率	
更改后	更改日期		SHINI		
			Shini Plastics Technologies, Inc.		



RS485 comm. port plate

A1 SCM-21

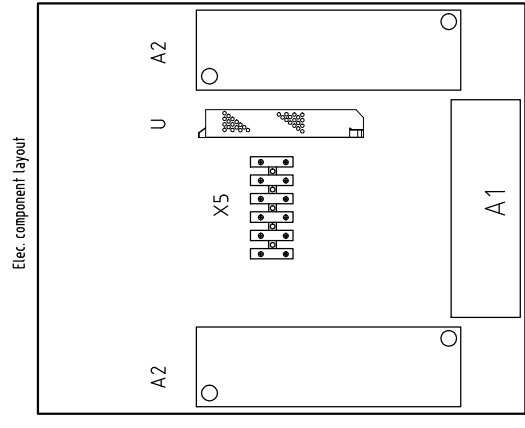
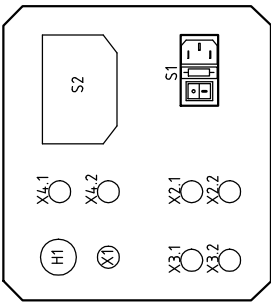
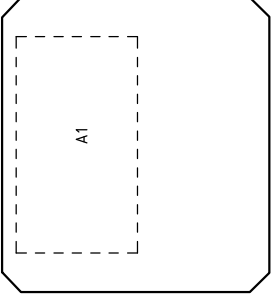
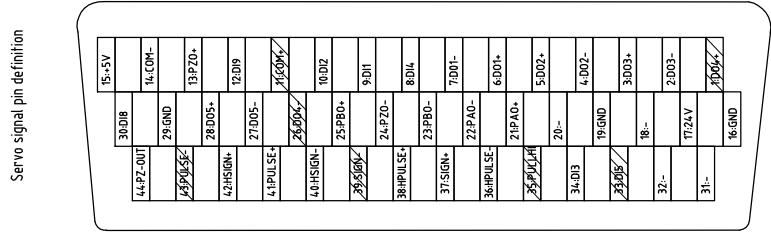
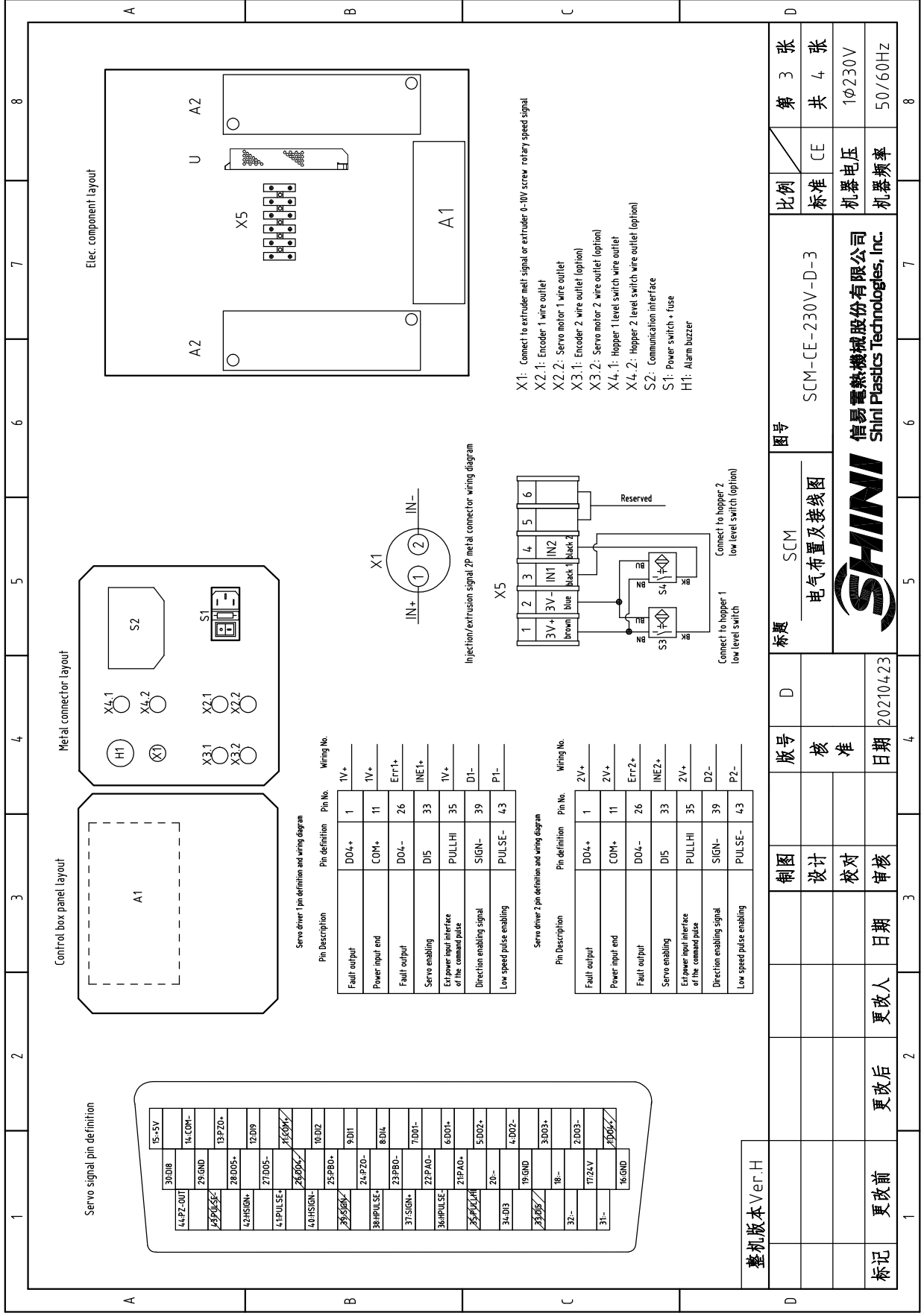
MOTOR2 (M-C2)

MOTOR1 (M-C1)

Note: RS485 comm. wire.
SG is reversed but not connected.

整机版本 Ver. H

制图	设计	20220718	日期	更改人	更改后	更改前	标记
版号	核准		日期	20210423			
标题	SCM 控制电路图	图号	SCM-CE-230V-D-2	比例	标准	第 2 张	共 4 张
信易电热机械股份有限公司 Shini Plastics Technologies, Inc.		SHINI		机器电压	1φ230V	机器频率	50/60Hz

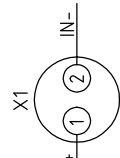


Servo driver 1 pin definition and wiring diagram

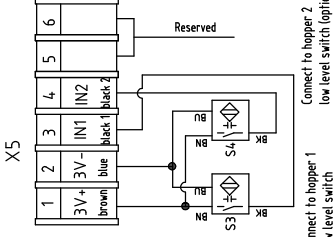
Pin Description	Pin No.	Wiring No.
Fault output	DO+	1V+
Power input end	COM+	1V+
Fault output	DO-	Err1+
Servo enabling	D15	INE1+
Equipower input interface of the command pulse	PULLHI	1V+
Direction enabling signal	SIGN-	D1-
Low speed pulse enabling	PULSE-	P1-

Servo driver 2 pin definition and wiring diagram

Pin Description	Pin No.	Wiring No.
Fault output	DO+	2V+
Power input end	COM+	2V+
Fault output	DO-	Err2+
Servo enabling	D15	INE2+
Equipower input interface of the command pulse	PULLHI	2V+
Direction enabling signal	SIGN-	D2-
Low speed pulse enabling	PULSE-	P2-



Injection/extrusion signal 2P metal connector wiring diagram



- X1: Connect to extruder melt signal or extruder 0-10V screw rotary speed signal
- X2.1: Encoder 1 wire outlet
- X2.2: Servo motor 1 wire outlet
- X3.1: Encoder 2 wire outlet (option)
- X3.2: Servo motor 2 wire outlet (option)
- X4.1: Hopper 1 level switch wire outlet (option)
- X4.2: Hopper 2 level switch wire outlet (option)
- S2: Communication interface
- S1: Power switch + fuse
- H1: Alarm buzzer

Connect to hopper 1 low level switch
Connect to hopper 2 low level switch (option)

整机版本 Ver.H

图号	SCM	标题	SCM	图号	SCM-CE-230V-D-3	比例	第 3 张
版号	D	设计	核准	电气布置及接线图		标准	共 4 张
日期	20210423	校对	日期	SHINI	机器电压	CE	1φ230V
更改前	更改人	更改后	更改日期	信易电热机械股份有限公司 Shini Plastics Technologies, Inc.	机器频率		50/60HZ

1		2		3		4		5		6		7		8	
NO.	Symbol	Name	Manufacturer	Type	Specification	Number	Material number	Remark							
1	A1	Microcomputer touch panel controller/PCB+HMI	YUYUN	SCM-21	24 VDC	1	YE80212400100								
2	S1	Power switch + plug wire	MISUMI	APCJ-101-1FR-03	AC90-56A-53-375-2	1	YE15111300000								
3		Fuse	JIANDONG	5x20	10A	1	YE46521000000	one use on backup							
4	W1	CE Power Line	RENYI	1.0x3P	10A	1	YE50122500000	CE Power Line							
5		GB Power Line	YONGTAO	0.75x3C	10A	1	YE50316300000	CB Power Line							
6	H1	Buzzer	JINGKANG	PK-27A/29EP	24 VDC	1	YE84002700000								
7	U	DC Power	MEANWELL	LRS-35-24	IN=115/230V OUT=24VDC 1.5A	1	YE71352400100								
8	X1	Metal connector	CHAOYI	PLT-162-RR(male)	2P	1	YE68016200100								
9	X1	Metal connector	CHAOYI	PLT-162-PR(female)	2P	1	YE68016200000								
10	X2 X3 X4	Cable head	JUKUANG	PG9	----	2	YE67000940000								
11	X5	Terminal Board	TIANGONG	PA9X	6P	1	YE61001200000								
12	S2	Communication interface board RS-485 (double Dsub-9pin connector)	YUYUN	----	----	1	YE90048501200								
13		Shell RS485(SAL-700G-A-19)ver.0	BINCHENG	----	----	1	YR40048500000								
14	S3	Capacitor proximity switch	IFM	KI5082-EVS0	10~36VDC	1	YE15508200000	(1)							
15	S4	Capacitor proximity switch	IFM	KI5082-EVS0	10~36VDC	1	YE15508200000	(1)(2)							
16	M1 (W2, W3)	Servo motor	INOVANCE	MS1H1-4.0B30CB-T331Z	4.00W(include encoder wire and power wire)	1	YE50040000300	(1)							
17	A2(CN1)	Servo driver	INOVANCE	SV630CS2R81-JXS	4.00W(include CN1 terminal)	1	YM10463000800								
18	M2(W2, W3)	Servo motor	INOVANCE	MS1H1-4.0B30CB-T331Z	4.00W(include encoder wire and power wire)	1	YE50040000300	(1)(3)							
19	A3(CN1)	Servo driver	INOVANCE	SV630CS2R81-JXS	4.00W(include CN1 terminal)	1	YM10463000800	(3)							
20	W10	Signal cable 0.75x2(x4)(for SPV/SCM)	----	----	BA	1	BE51075200050								
整机版本 Ver. H Notes: (1)Means it's not the material inside the control box. (2) Level switch options (3) Double color doser SCM-D options;															
		制图		标题		图号		比例		第 4 张					
		设计		SCM		SCM-CE-230V-D-4		标准		共 4 张					
		校对		电气元件明细表一				机器电压		1φ230V					
		审核		SHINI		信易电热机械股份有限公司 Shini Plastics Technologies, Inc.		机器频率		50/60Hz					
标记	更改前	更改后	更改人	日期	20210423										
1		2	3	4	5	6	7	8							