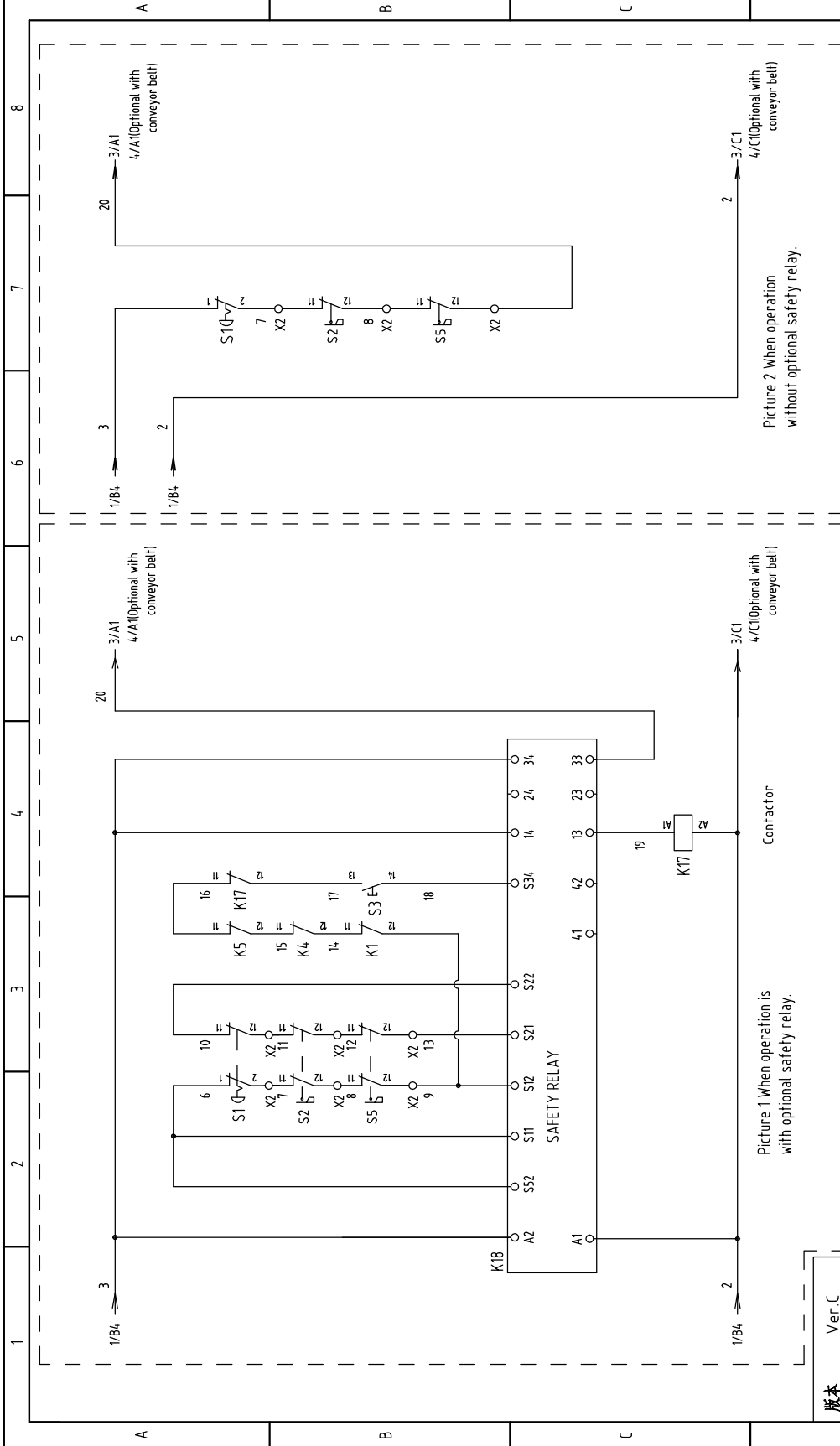


Ver.C

D	Mark	Before modification	After modification	Modify date	20170605	Version	D	Title	SGS-4860S Main Circuit Diagram	Drawing No.	SGS-4860S-400V-CE-D-1	Scale	Page 1
	Checked by			Date	20170605	Approved by		SGS-4860S-400V-CE-D-1		Standard	CE	Totally	8
								Voltage					Pages
								Frequency					400V
													50Hz
													8



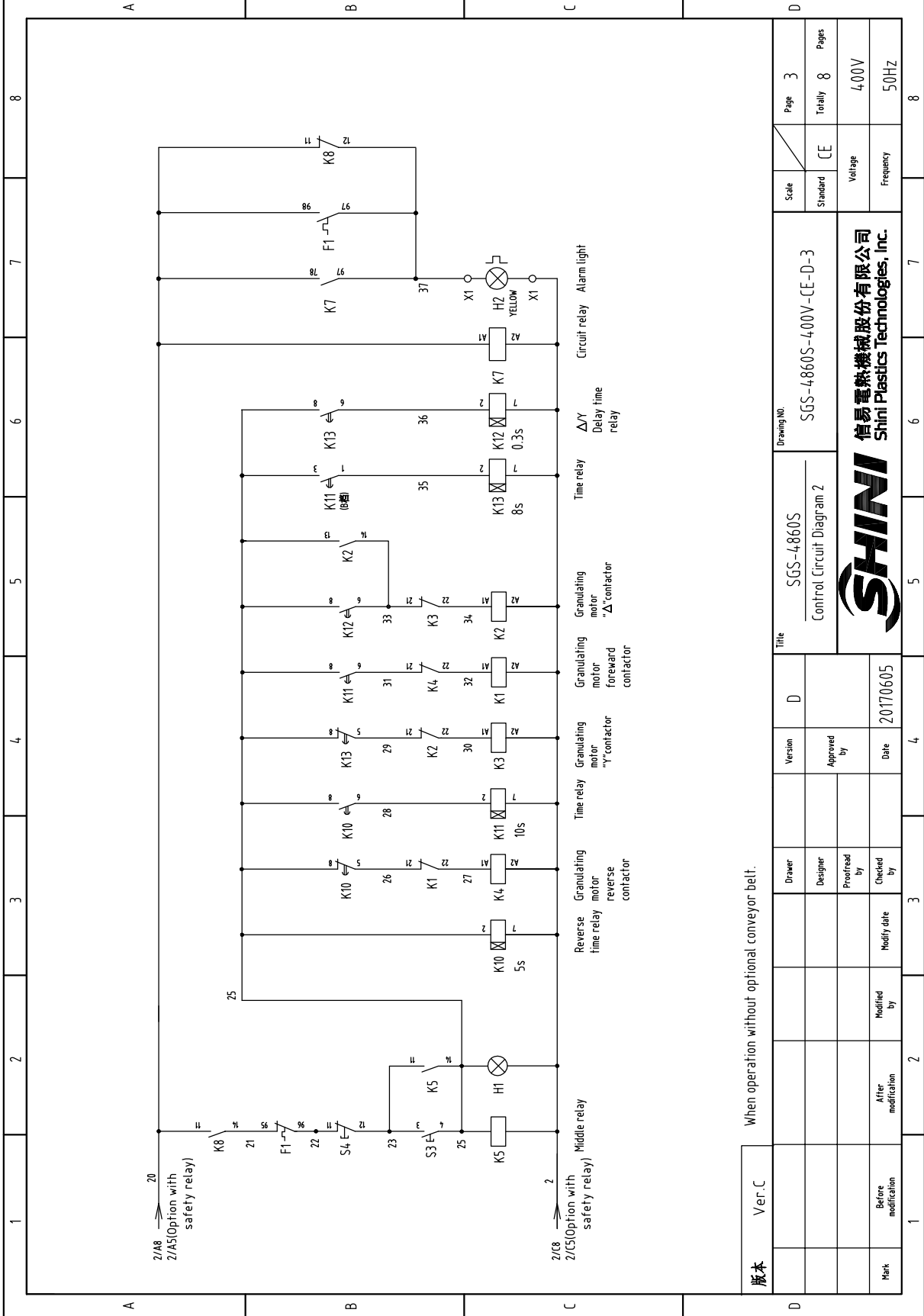


Mark	Before modification	After modification	Modified by	Modify date

Version	D
Approved by	
Date	20170605

Title		SGS-4860S Control Circuit Diagram 1	
Drawing No.		SGS-4860S-400V-CE-D-2	
Scale	Page	Standard	Pages
	2	CE	Totally 8
Voltage		400V	
Frequency		50Hz	



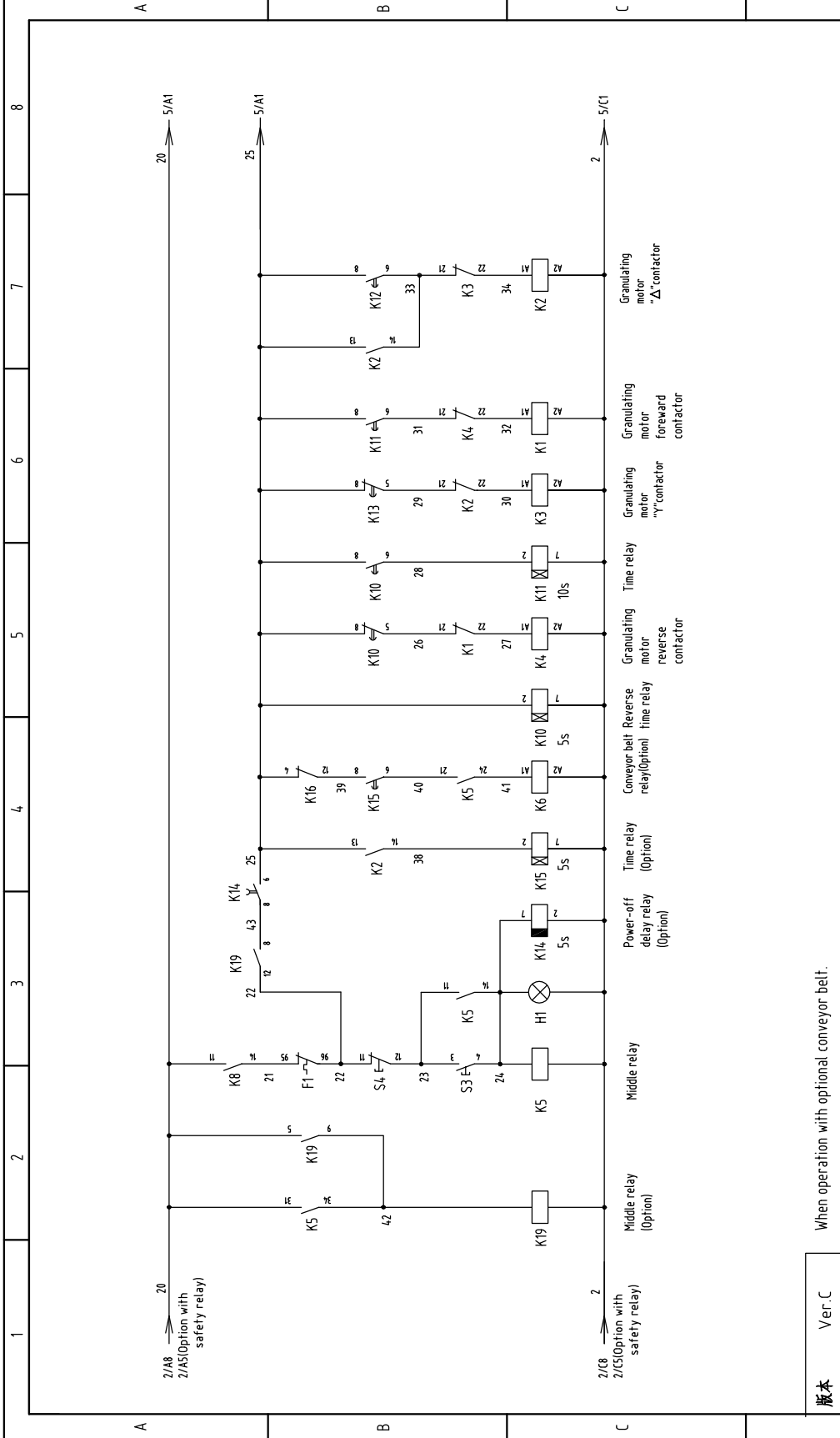


Ver.C

When operation without optional conveyor belt.

版本	Ver.C	Title	SGS-4860S		Drawing No.	SGS-4860S-4.00V-CE-D-3		Scale	Page	3
			Control Circuit Diagram 2	Standard		CE	Totally		8	
Mark	Before modification	After modification	Modified by	Modify date	Checked by	Proofread by	Designer	Drawer	Pages	
									Voltage	4.00V
									Frequency	50Hz
	1	2	3	4	5	6	7	8		



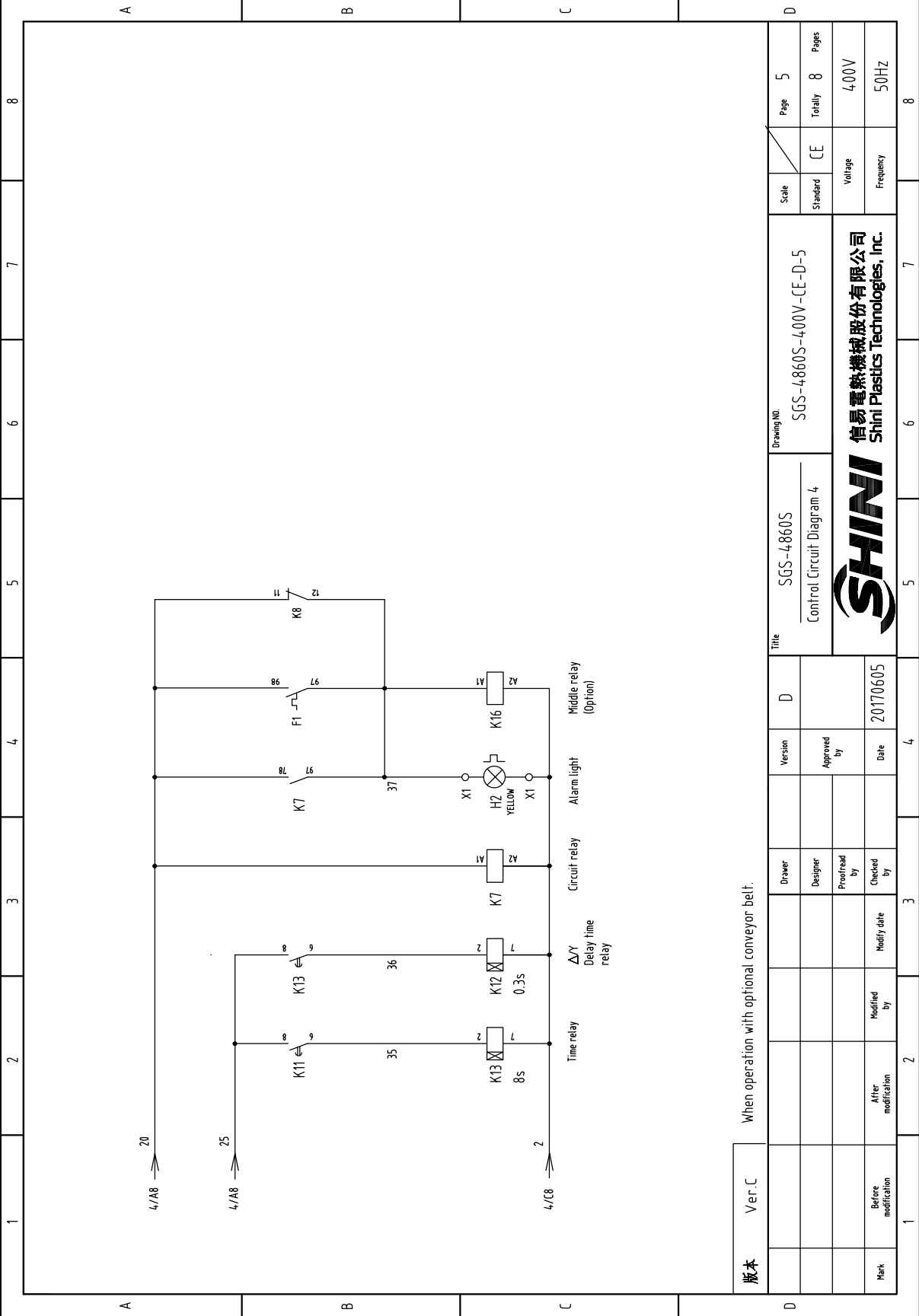


版本 Ver.C

When operation with optional conveyor belt.

Mark	Before modification	Modified by	Modify date	Date	20170605	Checked by	Proofread by	Designer	Drawer	Version	D	Title	Drawing No.		Scale	Page													
	After modification												SGS-4860S	SGS-4860S-400V-CE-D-4			CE	4											
														Standard		Totally		Pages											
														CE		8		8											
														Voltage		Frequency		400V		50Hz									
														8		7		6		5		4		3		2		1	





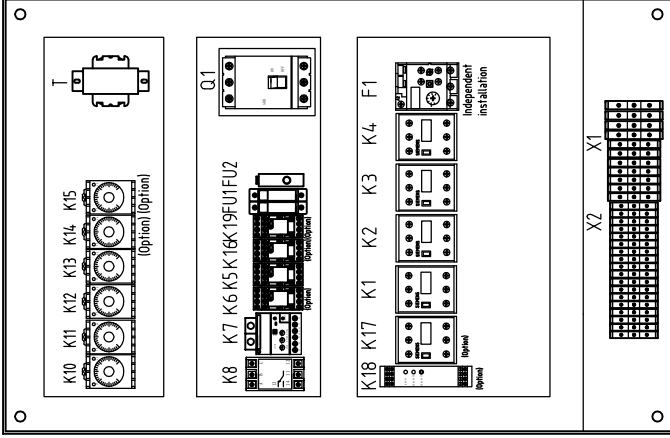
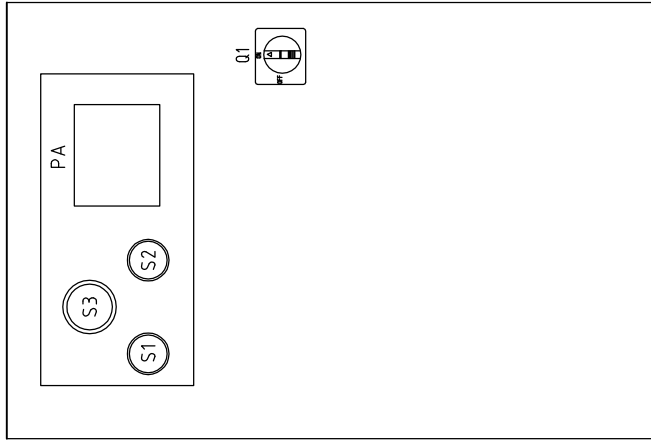
When operation with optional conveyor belt.

版本	Ver.C
Mark	
Before modification	After modification
Modified by	Modify date
Checked by	20170605
Proofread by	
Designer	
Approved by	
Version	D
Drawer	

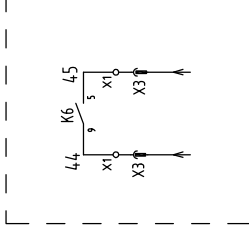
Title		SGS-4860S		Drawing No.		SGS-4860S-400V-CE-D-5	
Control Circuit Diagram 4				Standard		CE	
Voltage		400V		Frequency		50Hz	
Scale				Page		5	
Standard		CE		Totally		8	
Frequency		50Hz		Pages		8	



1 2 3 4 5 6 7 8

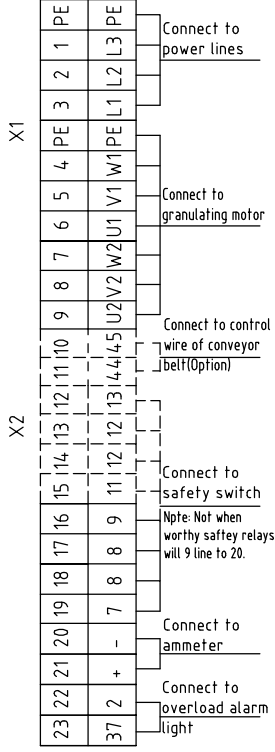
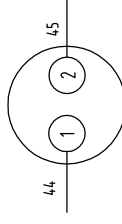


Control contact wiring diagram in collocation with belt conveyor



X3

Connection diagram of metal connectors  
Connect to belt conveyor(Option)



Ver.C

版本	Ver.C		Title	SGS-4860S		Drawing No.	SGS-4860S-4,00V-CE-D-6		Scale	Page
	Electrical Components Layout			Electrical Components Layout			Standard	CE	Totally	8
Mark	Before modification	Modified by	Drawer	Designer	Proofread by	Checked by	Modify date	Voltage	4,00V	
			Version	D	Approved by	Date	20170605	Frequency	50HZ	

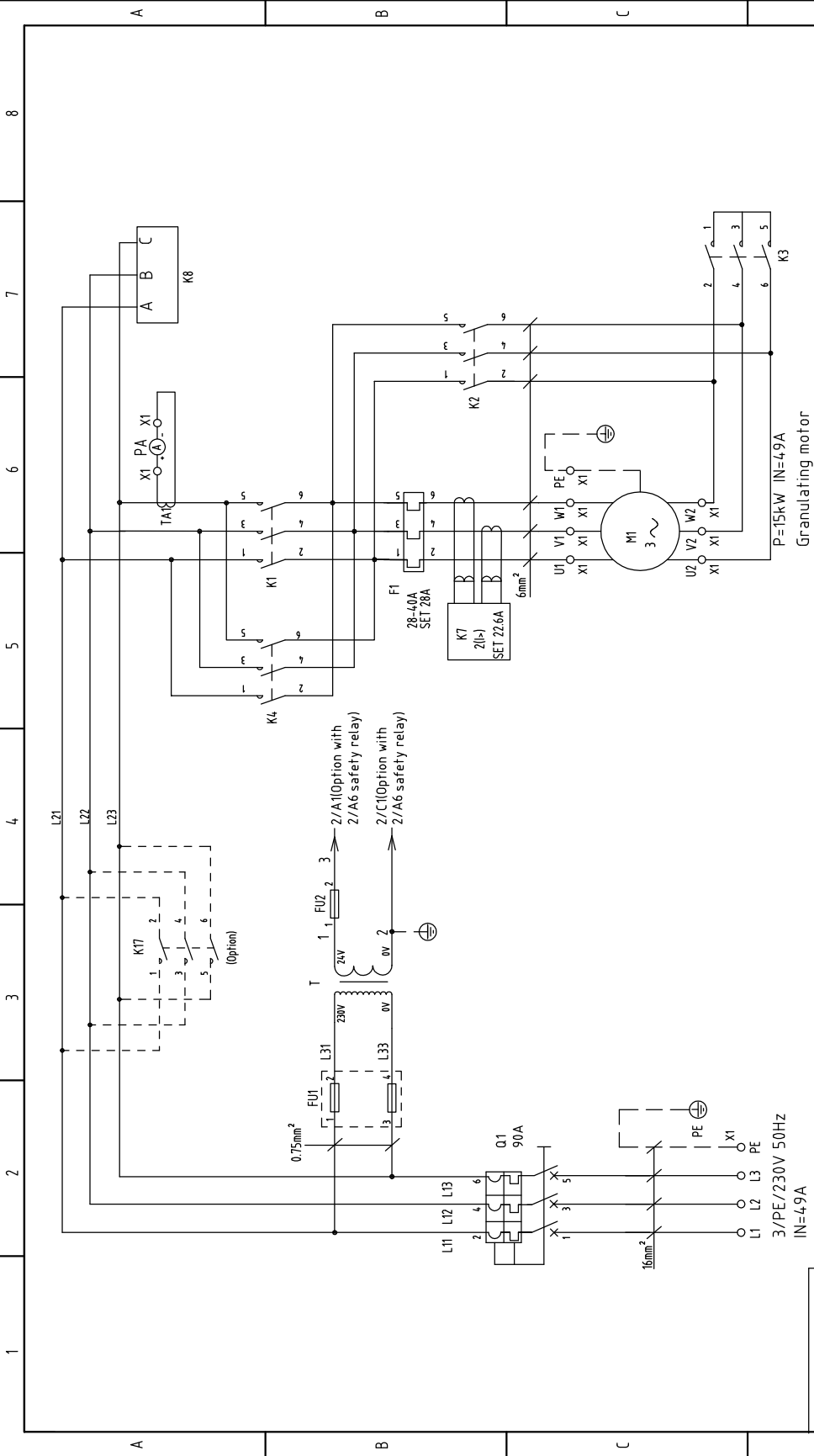
**SHINI**  
信易塑料机械股份有限公司  
Shini Plastics Technologies, Inc.

1 2 3 4 5 6 7 8

1		2		3		4		5		6		7		8	
NO.	Symbol	Name	Manufacturer	Type	Specification	Number	Material number	Remark							
1	Q1	Breaker interlock	ABB	A1A125TMF60	60A	1	YE41106200000								
2	K1,K4	Contact	SIEMENS	3RT6028-1AC20	24VAC 50/60Hz	2	YE00602802600								
3		Auxiliary contact terminal	SIEMENS	3RH6911-1HA11	1NO+1NC	2	YE00691110100	(3)							
4	K2,K3	Contact	SIEMENS	3RT6026-1AC20	24VAC 50/60Hz	2	YE00602602600								
5		Auxiliary contact terminal	SIEMENS	3RH6911-1HA11	1NO+1NC	1	YE00691110100	(2)							
6	K5	Middle relay	Honeywell	GR-4C-AC24V	24VAC	1	YE03042400300								
7	K6	Middle relay	Honeywell	GR-2C-AC24V	24VAC	1	YE03022400300	(2)							
8	K7	Current relay	Telemecanique	L14760BA	24VAC 50/60Hz 5-60A	1	YE04047600900								
9	K8	Phase sequence protector	CHAOSHI	ABJ-10W	380V 50/60Hz	1	YE85386000000								
10	K10 K11 K13	Timer relay	YUYUN	TH3A-NAB	24VAC 60S	3	YE86602400300								
11	K12	Timer relay	YUYUN	TH3M-NAB	24VAC 3S-60M	1	YE86123000000								
12	K14	Timer relay	YUYUN	TRF-N	24VAC 3M	1	YE86032400000	(2)							
13	K15	Timer relay	YUYUN	TH3A-NAB	24VAC 60S	1	YE86602400300	(2)							
14	K16	Middle relay	Honeywell	GR-2C-AC24V	24VAC	1	YE03022400300	(2)							
15	K17	Contact	SIEMENS	3RT6028-1AC20	24VAC 50/60Hz	1	YE00602802600	(3)							
16	K18	Safety relay	PILZ	PN0Zx2.8P	24V AC/DC	1	YE04023000000	(3)							
17	K19	Middle relay	Honeywell	GR-2C-AC24V	24VAC	1	YE03022400300	(2)							
18	F1	Overload relay	SIEMENS	3RU6126-4BB1	14-20A	1	YE01612600000								
19	FU1	Fuse	CHINT	RT28-32	32A/2P	1	YE41032200000								
20		Fuse core	MRO	MRO/2A(10x38)500V	2A	2	YE46002000100								
21	FU2	Fuse	YINDA	FS-10	--	1	YE41001000000								
22		Glass tube	----	6x30	8A	1	YE46863000200								
23	S1	Emergency stop button	SCHNEIDER	XB2BS542C	400VAC	1	YE12542000000	(1)							
24		Contact block	SCHNEIDER	ZB2BE102C	1NC	1	YE00210203100	(1)(3)							
25	S4	Stop button	SCHNEIDER	XB2BA22C	400VAC	1	YE12220000000	(1)							
版本		Ver. C	Notes: (1)Means it's not the material inside the control box.(2)Stand for conveying belt options. (3)Stand for optional safety relay.												
D		Title		Drawing NO.		Scale		Page 7		Standard		CE		Page 8	
		SGS-4860S		SGS-4860S-4.00V-CE-D-7		Electrical Components List 1		Voltage		4.00V		Frequency		50Hz	
Mark		Before modification		After modification		Modify date		Date		20170605		SHINI		Shini Plastics Technologies, Inc.	
1		2		3		4		5		6		7		8	



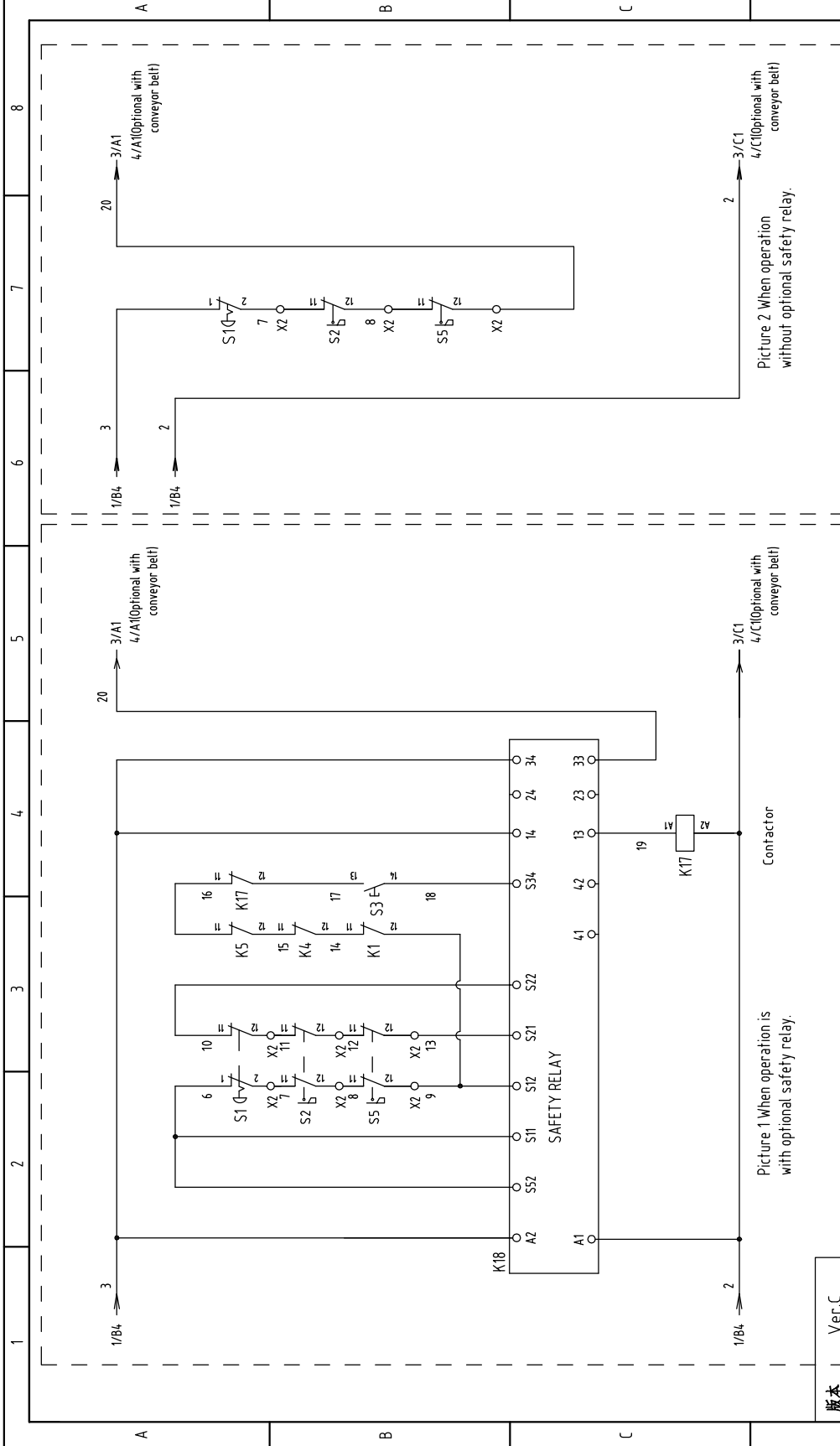




Ver.C

Mark	Before modification	Other modification	Modified by	Modify date	Checked by	Date	20160809	Version	D	Title	SGS-4860S		Drawing No.	SGS-4860S-CE-230V-D-1		Scale	Page 1	
											Main Circuit Diagram			CE			Page 8	
										Voltage		230V						
										Frequency		50Hz						
												Totally 8						
												Page 1						

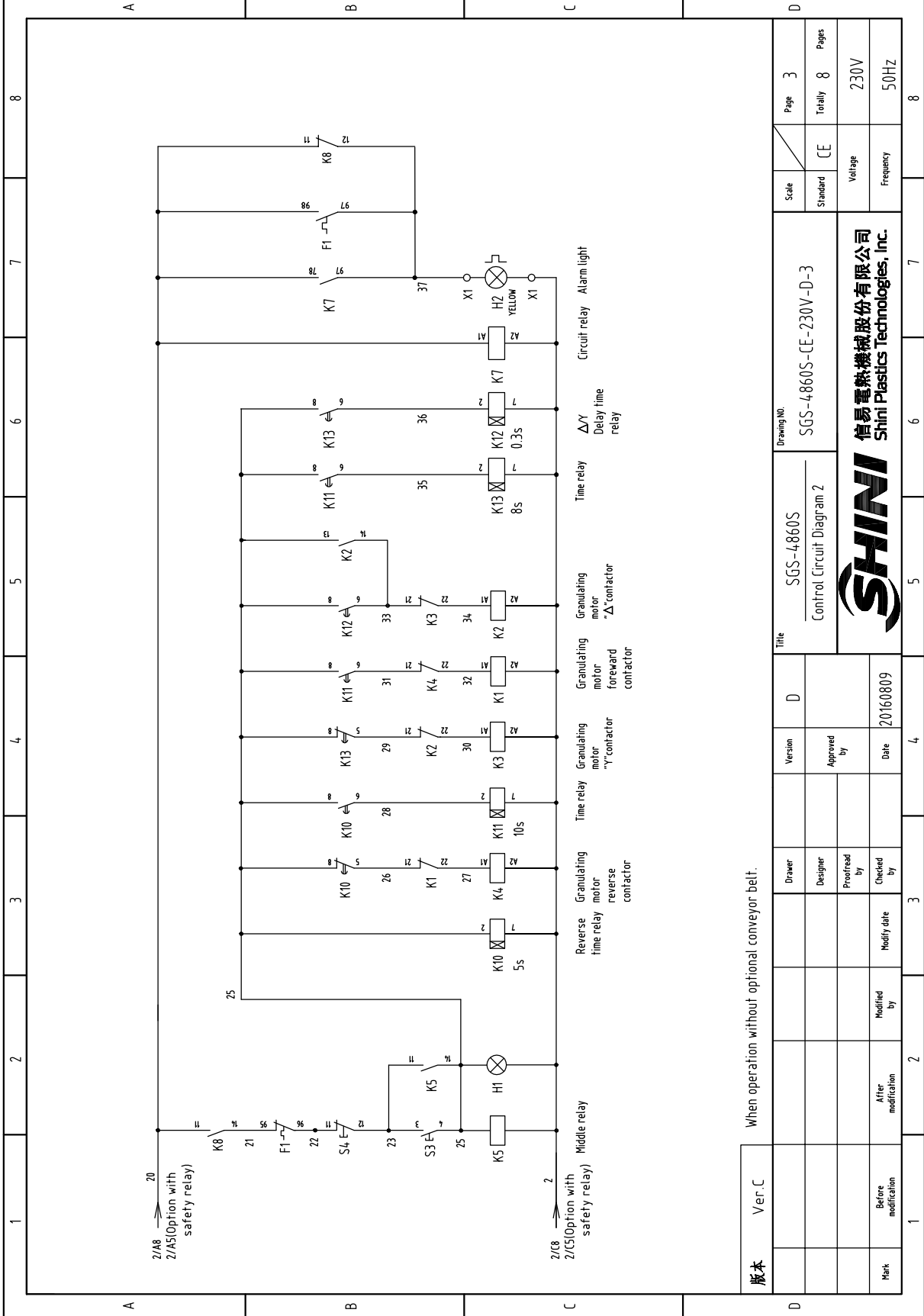




版本 Ver.C

Mark	Before modification	Modified by	Modify date	Checked by	Date	20160809
	After modification	Modified by	Modify date	Proofread by		
		Designer	Approved by	Version	D	
		Drawer		Title	SGS-4860S Control Circuit Diagram 1	
				Drawing NO.	SGS-4860S-CE-230V-D-2	
				Scale	CE	Page 2
				Standard	CE	Totally 8
						Pages
						230V
						50Hz

**SHINI**  
 信易電軌機械股份有限公司  
 Shini Plastics Technologies, Inc.



版本	Ver.C
Mark	Before modification
	After modification
	Modified by
	Modify date
	Checked by
	Proofread by
	Designer
	Drawer
	Version
	Approved by
	Date
	20160809

When operation without optional conveyor belt.

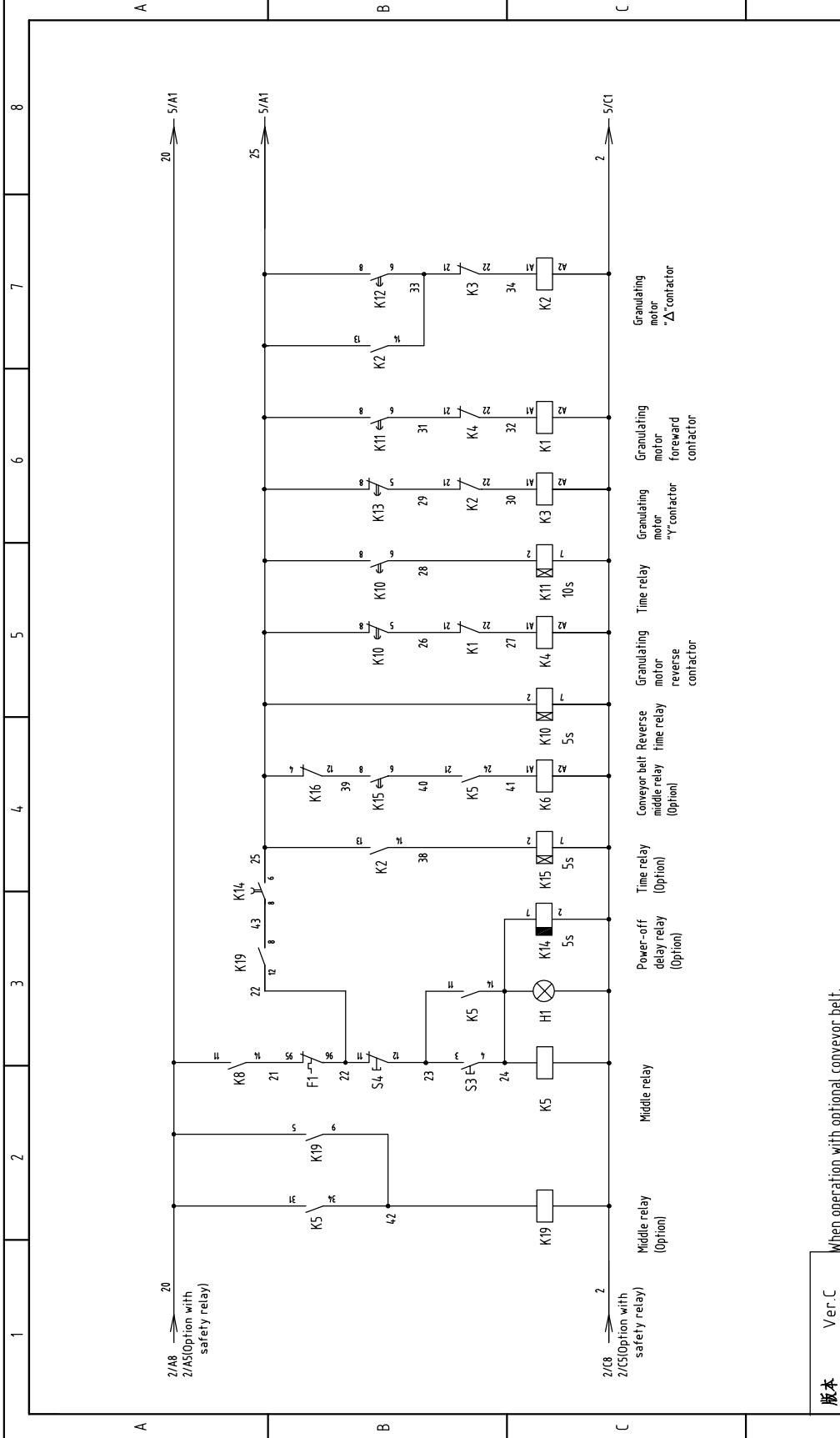
SGS-4860S	Control Circuit Diagram 2
SGS-4860S-CE-230V-D-3	

SGS-4860S	Control Circuit Diagram 2
SGS-4860S-CE-230V-D-3	

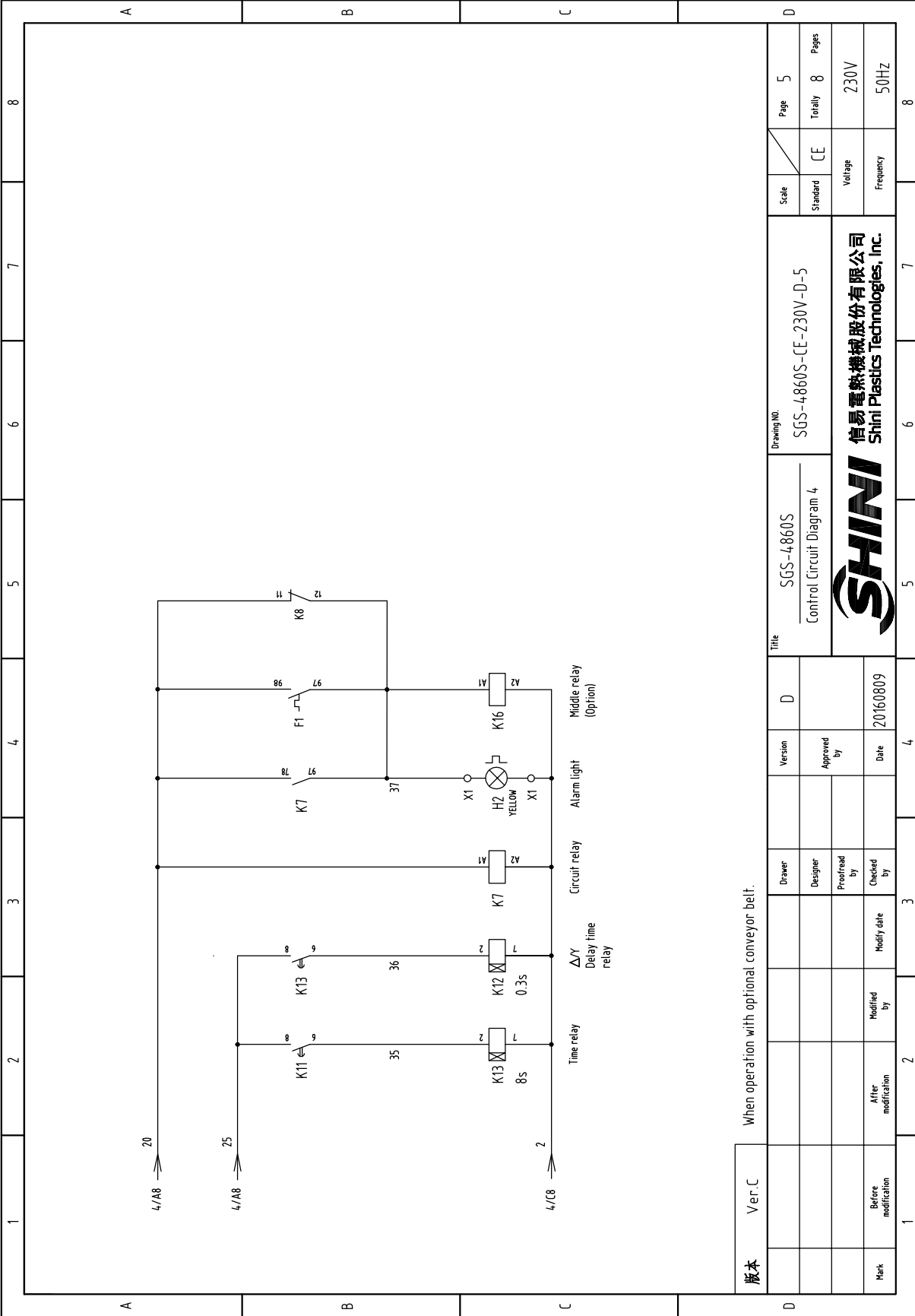
Scale	CE	Page	3
Standard	CE	Totally	8
		Pages	8
		Voltage	230V
		Frequency	50Hz

信易塑料机械股份有限公司  
Shini Plastics Technologies, Inc.





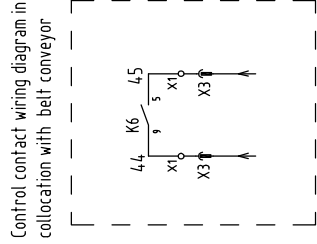
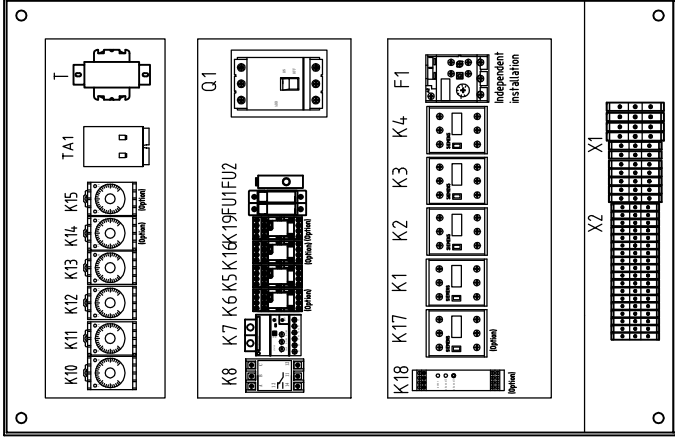
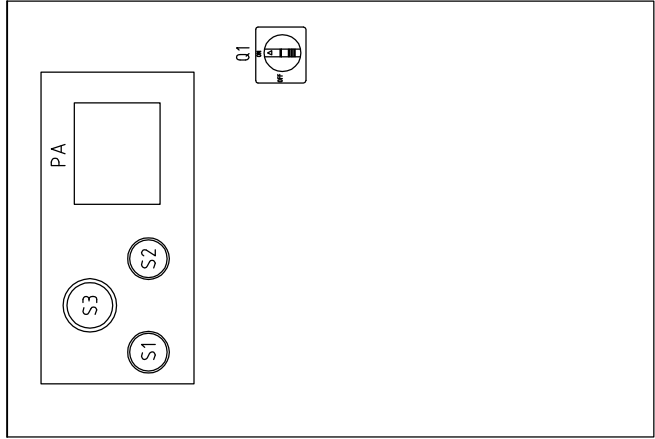
Ver.C	When operation with optional conveyor belt.		Title		Drawing No.		Scale	Page
	Version	D	SGS-4860S Control Circuit Diagram 3		SGS-4860S-CE-230V-D-4		Standard	4
Mark	Before modification	Modified by	Approved by	SHINI 信易電熱機械股份有限公司 Shini Plastics Technologies, Inc.		Voltage		Pages
		Modify date	Date	20160809		230V		Totally 8
				20160809		Frequency		8
				20160809		50Hz		8



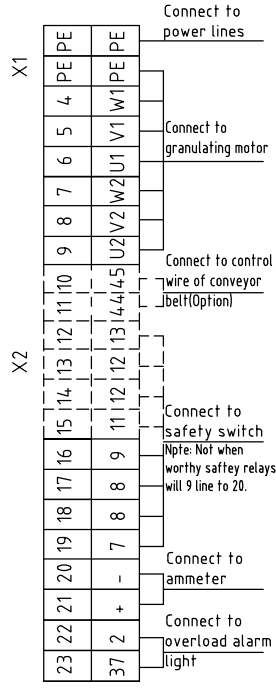
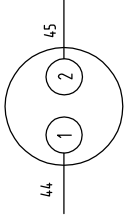
When operation with optional conveyor belt.

版本	Ver.C	Drawer	Version	D	Title	Drawing No.		Scale	Page
							SGS-4860S	SGS-4860S-CE-230V-D-5	CE
Mark	Before modification	Designer	Approved by	Date	SHINI 信易電熱機械股份有限公司 Shini Plastics Technologies, Inc.	Standard		Voltage	Pages
	After modification					Modified by	Checked by	CE	230V
				20160809		Frequency	50Hz		
1	2	3	4	5	6	7	8		

1 2 3 4 5 6 7 8



X3  
Connection diagram of metal connectors  
Connect to belt conveyor(Optional)



Ver.C

Scale	Page	6
Standard	Totally	8
CE	Voltage	230V
	Frequency	50HZ

Drawing No.	SGS-4860S
Title	SGS-4860S-CE-230V-D-6
Electrical Components Layout	

Version	D
Approved by	
Designer	
Proofread by	
Checked by	
Date	20160809

Mark	Before modification	After modification	Modify date



1 2 3 4 5 6 7 8

1		2		3		4		5		6		7		8	
NO.	Symbol	Name	Manufacturer	Type	Specification	Number	Material number	Remark							
1	Q1	Breaker interlock	ABB	A1A125TMF90	90A	1	YE41106200000								
2	K1,K4	Contact	SIEMENS	3RT5044-1AC20	24VAC 50/60Hz	2	YE00504402600								
3		Auxiliary contact terminal	SIEMENS	3RH5921-1CA01	1NC	2	YE00592110100								
4		Auxiliary contact terminal	SIEMENS	3RH5921-1CA01	1NC	2	YE00592110100	(3)							
5	K2,K3	Contact	SIEMENS	3RT5036-1AC20	24VAC 50/60Hz	2	YE00503602600								
6		Auxiliary contact terminal	SIEMENS	3RH5921-1CA10	1NO	1	YE00192101000								
7		Auxiliary contact terminal	SIEMENS	3RH5921-1CA01	1NC	2	YE00592110100								
8		Auxiliary contact terminal	SIEMENS	3RH5921-1CA10	1NO	1	YE00192101000	(2)							
9	K5	Middle relay	Honeywell	GR-4C-AC24V	24VAC	1	YE03042400300								
10	K6	Middle relay	Honeywell	GR-2C-AC24V	24VAC	1	YE03022400300	(2)							
11	K7	Current relay	Telemecanique	LT4760BA	24VAC 50/60Hz 5-60A	1	YE04047600900								
12	K8	Phase sequence protector	CHAOSHI	ABJ-10W	220V 50/60Hz	1	YE03102200000								
13	K10 K11 K13	Timer relay	YUYUN	TH3A-NAB	24VAC 60S	3	YE86602400300								
14	K12	Timer relay	YUYUN	TH3M-NAB	24VAC 3S-60M	1	YE86123000000								
15	K14	Timer relay	YUYUN	TRF-N	24VAC 3M	1	YE86032400000	(2)							
16	K15	Timer relay	YUYUN	TH3A-NAB	24VAC 60S	1	YE86602400300	(2)							
17	K16	Middle relay	Honeywell	GR-2C-AC24V	24VAC	1	YE03022400300	(2)							
18	K17	Contact	SIEMENS	3RT5044-1AC20	24VAC 50/60Hz	1	YE00504402600	(3)							
19	K18	Safety relay	PILZ	PN0Zx2.8P	24V AC/DC	1	YE04023000000	(3)							
20	K19	Middle relay	Honeywell	GR-2C-AC24V	24VAC	1	YE03022400300	(2)							
21	F1	Overload relay	SIEMENS	3RU5146-4FB0	28-40A	1	YE01514620000								
22		Base	SIEMENS	3RU5946-3AA01	S3	1	YE01594600000								
23	FU1	Fuse	CHINT	RTZ8-32	32A/2P	1	YE41032200000								
24		Fuse core	MRO	MRO/2A(10x38)500V	2A	2	YE46002000100								
25	FU2	Fuse	YINDA	FS-10	--	1	YE41001000000								
<b>版本</b> Ver.C Notes: (1)Means it's not the material inside the control box.(2)Stand for conveying belt options. (3)Stand for optional safety relay.															
		Drawer		Version		Title		Drawing NO.		Scale		Page		7	
		Designer		Approved by		SGS-4860S		SGS-4860S-CE-230V-D-7		Standard		CE		Voltage	
		Proofread by		Date		Electrical Components List 1				Frequency		230V		50Hz	
Mark		Before modification		Modify date		20160809				Frequency		230V		50Hz	
1		2		3		4		5		6		7		8	



1		2		3		4		5		6		7		8	
NO.	Symbol	Name	Manufacturer	Type	Specification	Number	Material number	Remark							
26		Glass tube	----	6x30	8A	1	YE46863000200								
27	S1	Emergency stop button	SCHNEIDER	XB2BS542C	230VAC	1	YE11254200000	(1)							
28		Contact block	SCHNEIDER	ZB2BE102C	1NC	1	YE00210203100	(1)(3)							
29	S4	Stop button	SCHNEIDER	XB2BA22C	230VAC	1	YE11222000000	(1)							
30	S3(H1)	Start button	SCHNEIDER	XB2BW33B1C	24VAC	1	YE11233100000	(1)							
31		Contact block	SCHNEIDER	ZB2BE101C	1NO	1	YE00210103100	(1)(3)							
32	S2 S5	Safety switch	SCHMERSAL	AZ15ZVRK-1476	AC-15	2	YE16147600100	(1)							
33	S2 S5	Safety switch	SCHMERSAL	AZ16-02ZVRK-M16-1476-1	AC-16	2	YE16147600000	(1)(3)							
34	T	Transformer	BAIYUN	IN=230V OUT=24VAC	180VA	1	YE70023005600								
35	H2	Alarm light	SHINI	LED-3501	24VAC	1	YE83305100900	(1)							
36	TA1	Current transformer	RATTO	RCT-35	75/5A	1	YE04750500000								
37	PA	Ammeter	SFIM	DH-670	75/5A	1	YE25677500000								
38	X1	Terminal board	HoneyWell	16mm <sup>2</sup> PE	---	1	YE60001603500								
39			HoneyWell	6mm <sup>2</sup>	---	8	YE60000603200								
40			HoneyWell	6mm <sup>2</sup> PE	---	1	YE60000603500								
41	X2	Terminal board	HoneyWell	2.5mm <sup>2</sup>	---	8	YE60002503200								
42			HoneyWell	2.5mm <sup>2</sup>	---	4	YE60002503200	(3)							
43			HoneyWell	2.5mm <sup>2</sup>	---	2	YE60002503200	(2)							
44	X3	Metal joint	SHINI	DF25-2P	2P	1	YE68025200000	(1)(2)							
45			----	DF25-2R	2P	1	YE68025200100	(1)(2)							
46	M1	Granulating motor	---	15kW	230V 50Hz	1	----	(1)							
<b>版本</b> Ver. C															
Notes: (1)Means it's not the material inside the control box.(2)Stands for conveying belt options. (3)Stand for optional safety relay.															
				Drawer		Version		Title		Drawing NO.		Scale		Page	
						D		SGS-4860S		SGS-4860S-CE-230V-D-8		CE		8	
				Designer		Approved by		Electrical Components List 2				Voltage		230V	
				Proofread by								Standard		Totally	
				Checked by		Date						Frequency		50Hz	
				Modify date											
				After modification											
				Before modification											
1															
1		2		3		4		5		6		7		8	

