

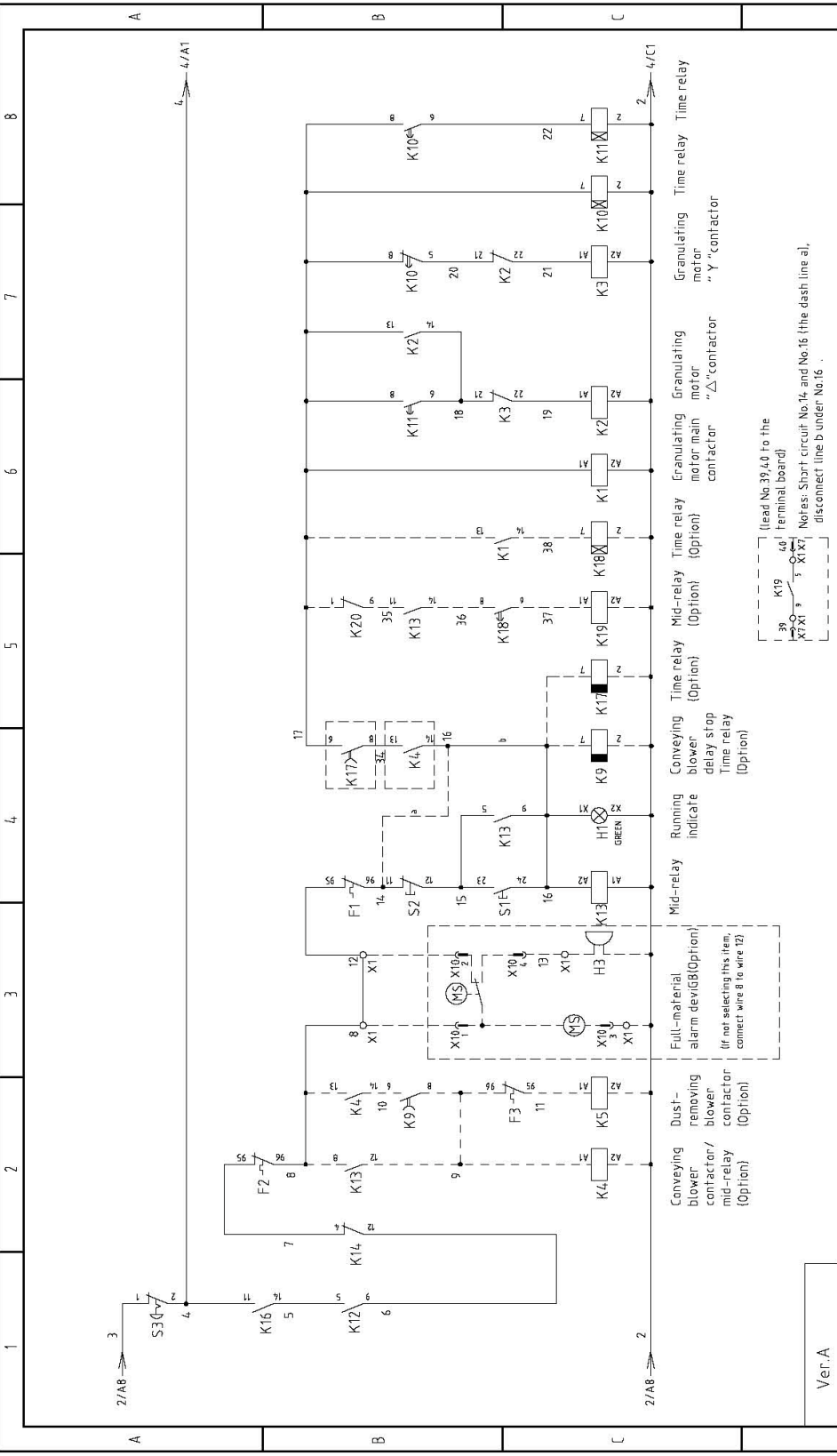
Scale	Page 1
Standard	Totally 8
GB	Pages
Voltage	400V
Frequency	50Hz

Drawing NO. SG-5080E-CB-400V-0-1  
Main Circuit Diagram 1



Ver.A	Version	0
	Designer	
	Proofread by	
	Checked by	
	Modified by	
	After modification	
Mark	Before modification	20150728
	Modified by	
	Checked by	
	Approved by	
	Date	
Title		SG-5080E
Drawer		

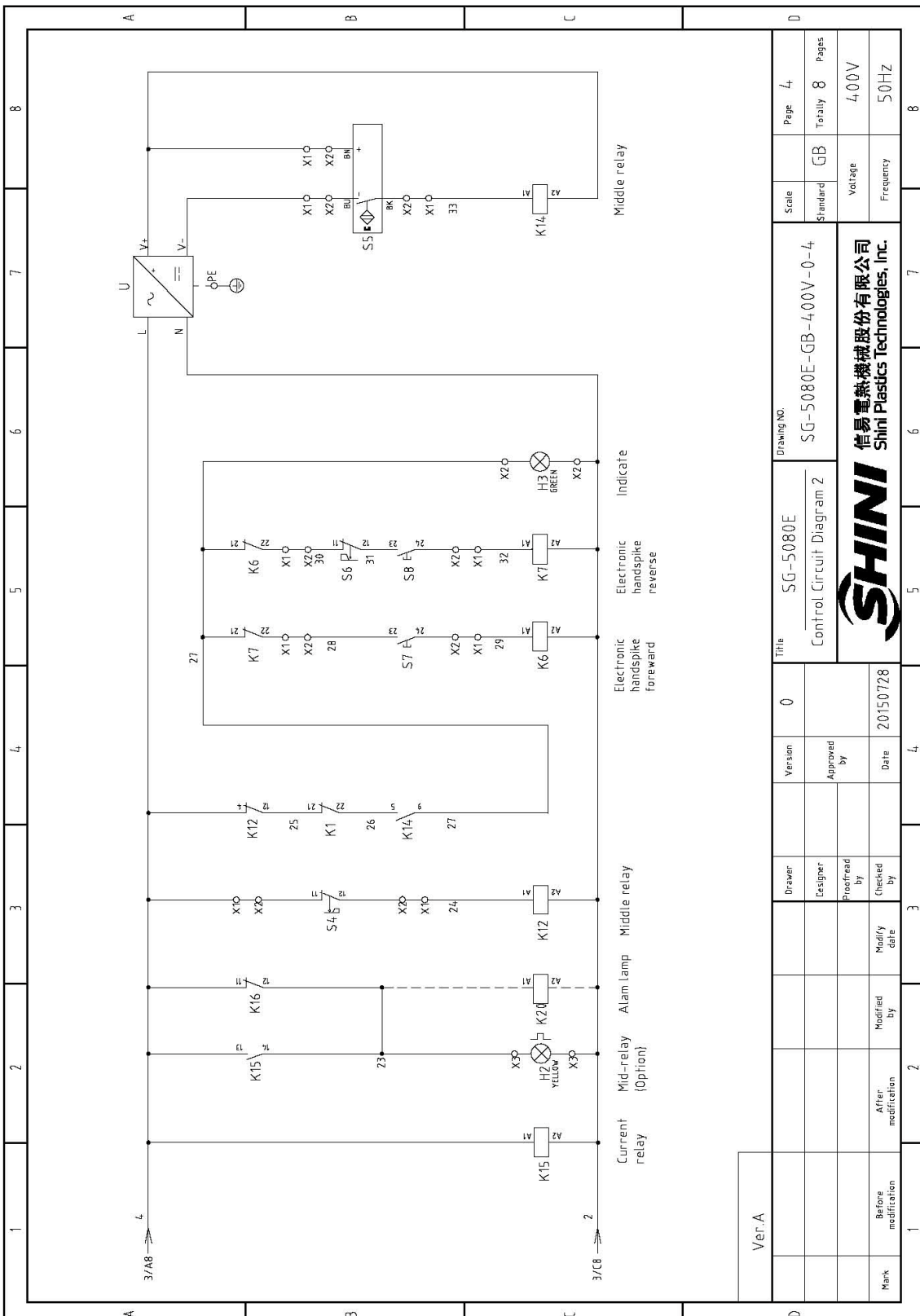




Ver A									
	Drawer	Version	Title	Scale	Drawing No.		Page 3		8
	Designer	Approved by	SG-5080E	Standard	SG-5080E-GB-400V-A-3		Standard	GB	
	Proofread by		Control Circuit Diagram 1					Totally 8	
	Checked by							Voltage	
	Modify date							4,00V	
	After modification							Frequency	
	Before modification							50HZ	
								8	

**SHINI**  
信易電熱機械股份有限公司  
Shini Plastics Technologies, Inc.

[ (Lead No. 39, 40 to the K19 terminal board) X7, X13, X17 ]  
[ (Lead No. 39, 40 to the K19 terminal board) X7, X13, X17 ]  
Notes: Short circuit No. 14, and No. 16 (the dash line al, disconnect line b under No. 16 .

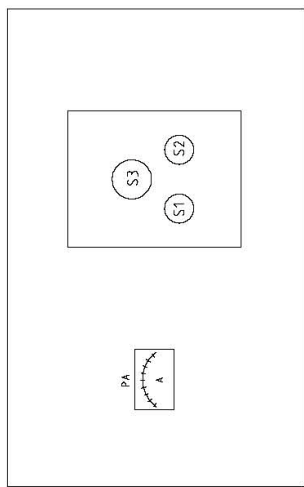


Ver.A		Title		Drawing NO.		Scale		Page	
		SG-5080E		SG-5080E-GB-400V-0-4		Standard		GB	
		Control Circuit Diagram 2				Voltage		400V	
						Frequency		50Hz	
		Version		0		Totally		8	
		Designer		Approved by		Pages			
		Proofread by		Date		400V		50Hz	
		Checked by		20150728		Voltage		400V	
		Modified by				Frequency		50Hz	
Mark		Before modification		After modification		Modified date			

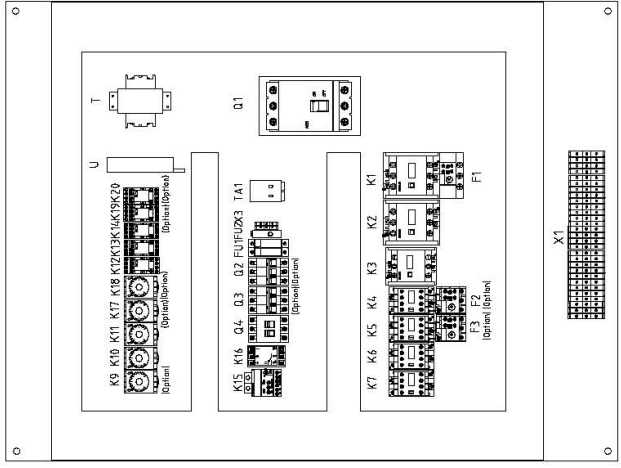
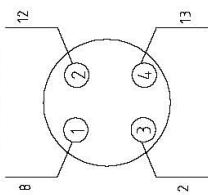


A B C D

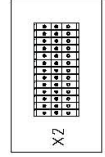
1 2 3 4 5 6 7 8



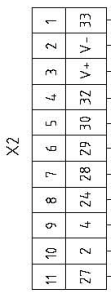
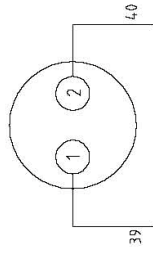
X10 Connection diagram of metal connectors (option)



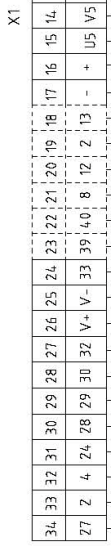
Connect to alarm light



X7 Connection diagram of metal connectors (option)



- 11 10 9 8 7 6 5 4 3 2 1
- 27 2 4 24 28 29 30 32 V+ V- 33
- Connect to indicator
- Connect to safety switch S4
- Connect to electric button S7
- Connect to position limit switch S6
- Connect to electric button S8
- Connect to electric sensor



- 27 2 4 24 28 29 30 32 V+ V- 33
- 34 33 32 31 30 29 28 27 26 25 24 23 22 21 20 19 18 17 16 15 14 13 PE 12 11 10 PE 9 8 7 PE 6 5 4 3 2 1 PE PE
- Connect to terminal board X2
- Connect to control wire of conveyor belt (Option)
- Full-receiver alarm device (optional)
- Connect to ammeter
- Connect to electronic handspike
- Connect to dust removing blower (Option)
- Connect to conveying blower (option)
- Connect to granulating motor
- Connect to the ground wire of the power supply

Ver.A

Mark	Before modification	Modified by	Modify date	Checked by	Date	Version	0	Title	SG-5080E	Drawing No.	SG-5080E-GB-400V-0-5	Scale	GB	Page	5
			20150728					Electrical Components Layout				Standard	GB	Totally	8
															Pages
															400V
															50HZ



1	2	3	4	5	6	7	8
NO	Symbol	Name	Manufacturer	Type	Specification	Number	Material number
1	Q1	Breaker interlock	ABB	A2B250TMF160	160A	1	YE41161500000
2	Q2	Circuit breakers	TECO	BM-63C/3032S	32A	1	YE40303203000
3	Q3	Circuit breakers	TECO	BM-63C/3006S	6A	1	YE40300603000
4	Q4	Thermomagnet circuit breaker	CHNT	NS2-25	1.6-2.5A	1	YE10162500100
5	K1,K2	Contact	SIEMENS	3RT5036-1AN20	220V 50/60Hz	2	YE00503600000
6	K3	Contact	SIEMENS	3RT5035-1AN20	220V 50/60Hz	1	YE00503500000
7		Auxiliary contact	SIEMENS	3RH5921-1CA10	1NO	1	YE00592110000
8		Auxiliary contact	SIEMENS	3RH5921-1CA01	1NC	3	YE00592110100
9		Auxiliary contact	SIEMENS	3RH5921-1CA10	1NO	1	YE00592110000
10	K4	Contact	SIEMENS	3RT6027-1AN20	220V 50/60Hz	1	YE00602722000
11		Auxiliary contact	SIEMENS	3RH6911-1AA10	1NO	1	YE00691110000
12	K5	Contact	SIEMENS	3RT6015-1AN21	220V 50/60Hz	1	YE00601521000
13	K6,K7	Contact	SIEMENS	3RT6015-1AN22	220V 50/60Hz	2	YE00601522000
14	K9	Timer	YUYUN	TRF-N/3M	220VAC	1	YE86322000000
15	K10 K11	Timer	YUYUN	TH3A-NAB/60S	220VAC	2	YE86300600000
16	K12,K13	Middle relay	WEIDMULLER	DRM270730LT	220VAC	2	YE03270700000
17	K13	Middle relay	WEIDMULLER	DRM570730LT	220VAC	1	YE03570700000
18	K14	Middle relay	WEIDMULLER	DRM270024LT	24VDC	1	YE03272400000
19	K15	Current relay	SCHNEIDER	LT4760M7A	220VAC 5-60A	1	YE04047600000
20	K16	Phase sequence protector	CHAOSHI	ABJ1-10-460	400VAC 50/60Hz	1	YE85104600000
21	K17	Timer	YUYUN	TRF-N/3M	220VAC	1	YE86322000000
22	K18	Timer	YUYUN	TH3A-NAB/60S	220VAC	1	YE86300600000
23	K19,K20	Middle relay	WEIDMULLER	DRM270730LT	220VAC	2	YE03270700000
24	F1	Overload relay	SIEMENS	3RU5136-4GB0	36-45A	1	YE01612660000
25	F2	Overload relay	SIEMENS	3RU6126-4B80	14-20A	1	YE01260140000
Ver A Notes: (2) Means accessories for material conveying blower.(3) Means optional accessories of full-receive alarm device.(4)Means optional accessories of dedusting blower.							
Title			Drawing NO.		Scale		Page
SG-5080E			0		SG-5080E-GB-400V-0-6		6
Electrical Components List 1			Version		Standard		Totaly
			Designer		GB		8
			Proofread by		Voltage		400V
			Date		Frequency		50Hz
20150728							
Mark			Before modification		After modification		Modify date

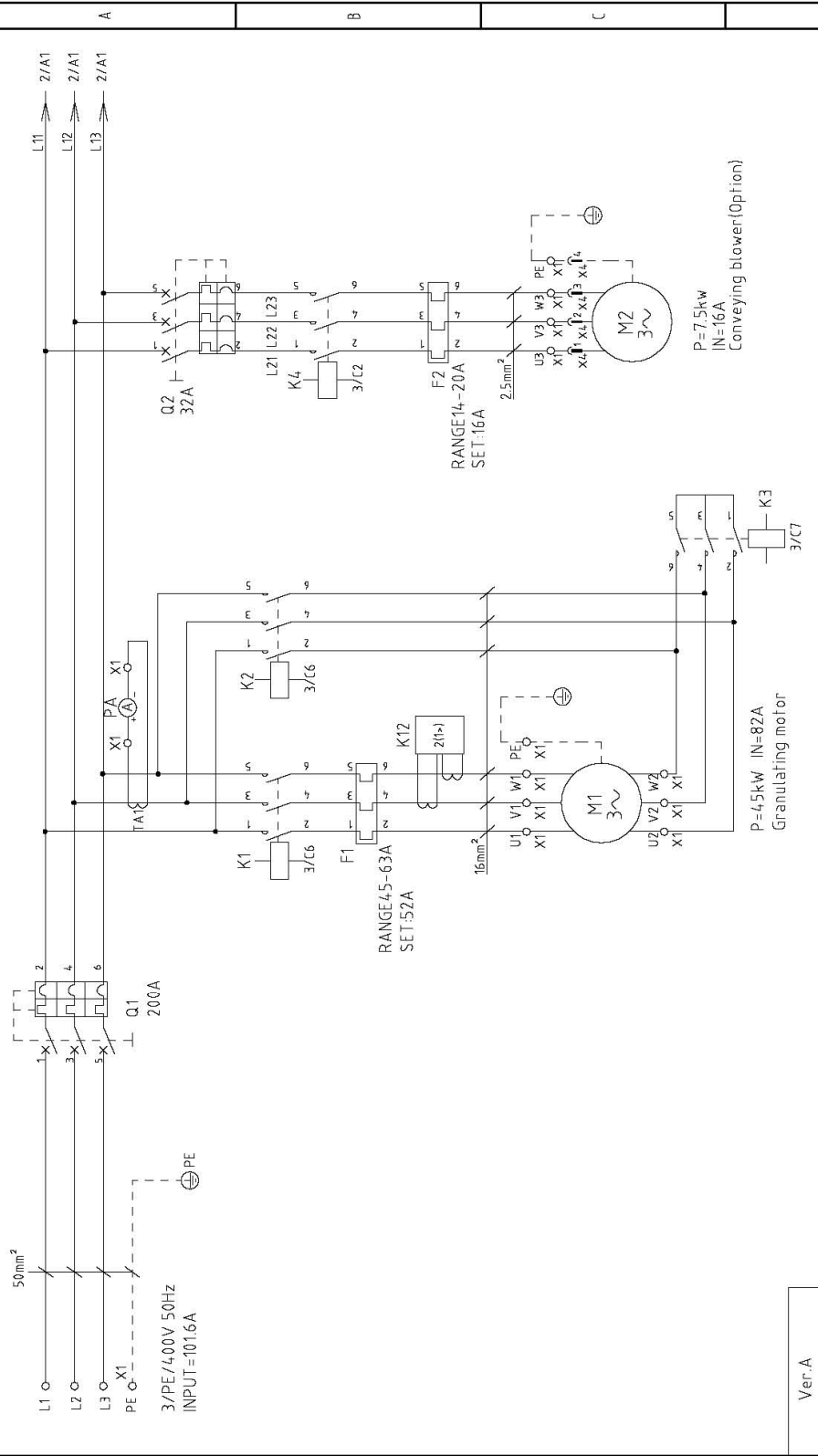


1		2		3		4		5		6		7		8	
No.	Symbol	Name	Manufacturer	Type	Specification	Number	Material number	Remark							
26	F3	Overload relay	SIEMENS	3RU6116-1DB0	2.2-3.2A	1	YE01160220000	(3)							
27	FU1	Fuse**	CHINT	RT28-32	32A/2P	1	YE4.1032200000								
28	FU2	Fuse core	MRO	MRO/2A(10x38)500V	2A Fuse core	2	YE4.6002000100								
29	FU2	Fuse**	YINDA	FS-10	2A	1	YE4.1001000000								
30	H2	Alarm light	SHINI	LED-3051	230VAC	1	YEB3305100200	(1)							
31	H3	Indicate lamp	ABB	CL-523G	230VAC GREEY	1	YEB3052300200	(1)							
32	S(H1),S7,SB	Start button	SCHNEIDER	XB2BW33M1C	400VAC	3	YE11223100000								
33	S2	Stop button	SCHNEIDER	XB2BA22C	400VAC	1	YE11222000000								
34	S3	Emergency stop button	SCHNEIDER	XB2BS542C	400VAC	1	YE11254.200000								
35	S4	Safety switch	SCHMERSAL	AZ 15ZVK-14.76	AC-15	1	YE1614.7600100	(1)							
36	S5	Inductive sensor	DELIN	DL-12	24VDC	1	YE151224.00000	(1)							
37	S6	Limit switch	SCHMERSAL	ZS 336-11Z	-----	1	YE14.332100000	(1)							
38	T	Transformer*	----	----	400V/ 230V 1500mA	1	YE704.02300300								
39	U	DC power	MEAN WELL	NES-35-24	OUT=24VDC 1.5A	1	YE71352400100								
40	X1	Terminal board	PHOENIX	35mm <sup>2</sup> PE	----	1	YE61353500000								
41			PHOENIX	10mm <sup>2</sup>	----	6	YE61100000000								
42			PHOENIX	10mm <sup>2</sup> PE	----	1	YE61103500000								
43			PHOENIX	2.5mm <sup>2</sup>	----	16	YE6125004.0000								
44			PHOENIX	2.5mm <sup>2</sup> PE	----	1	YE61253500000								
45			PHOENIX	2.5mm <sup>2</sup>	----	3	YE6125004.0000	(2)							
46			PHOENIX	2.5mm <sup>2</sup> PE	----	1	YE61253500000	(2)							
47			PHOENIX	2.5mm <sup>2</sup>	----	3	YE6125004.0000	(3)							
48			PHOENIX	2.5mm <sup>2</sup> PE	----	1	YE61253500000	(3)							
49			PHOENIX	2.5mm <sup>2</sup> PE	----	2	YE61253500000	(4)							
50			PHOENIX	2.5mm <sup>2</sup> PE	----	4	YE61253500000	(5)							
Ver. A Notes: (1)Means it's not the material inside the control box.(2)Means accessories for material conveying blower.(3)Means optional accessories of full-receive alarm device. (4)Means optional accessories of dedusting blower. (5) When optional with conveyor belt.															
D		Title		Drawing NO.		Scale		Page		Standard		Voltage		Pages	
		SG-5080E		SG-5080E-GB-4.00V-0-7		Standard		GB		Voltage		4.00V		Pages	
Mark		Before modification		After modification		Modified by		Modify date		Checked by		Date		20150728	
1		2		3		4		5		6		7		8	
								SHINI		信易电热机械股份有限公司		Shini Plastics Technologies, Inc.			



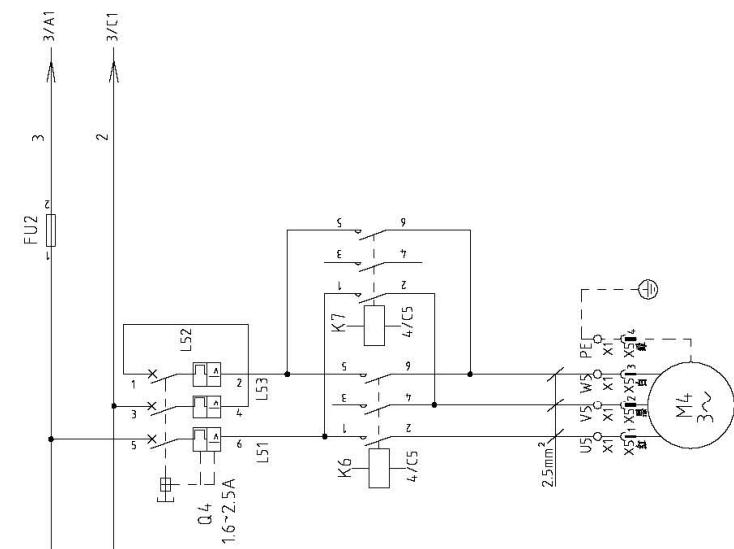




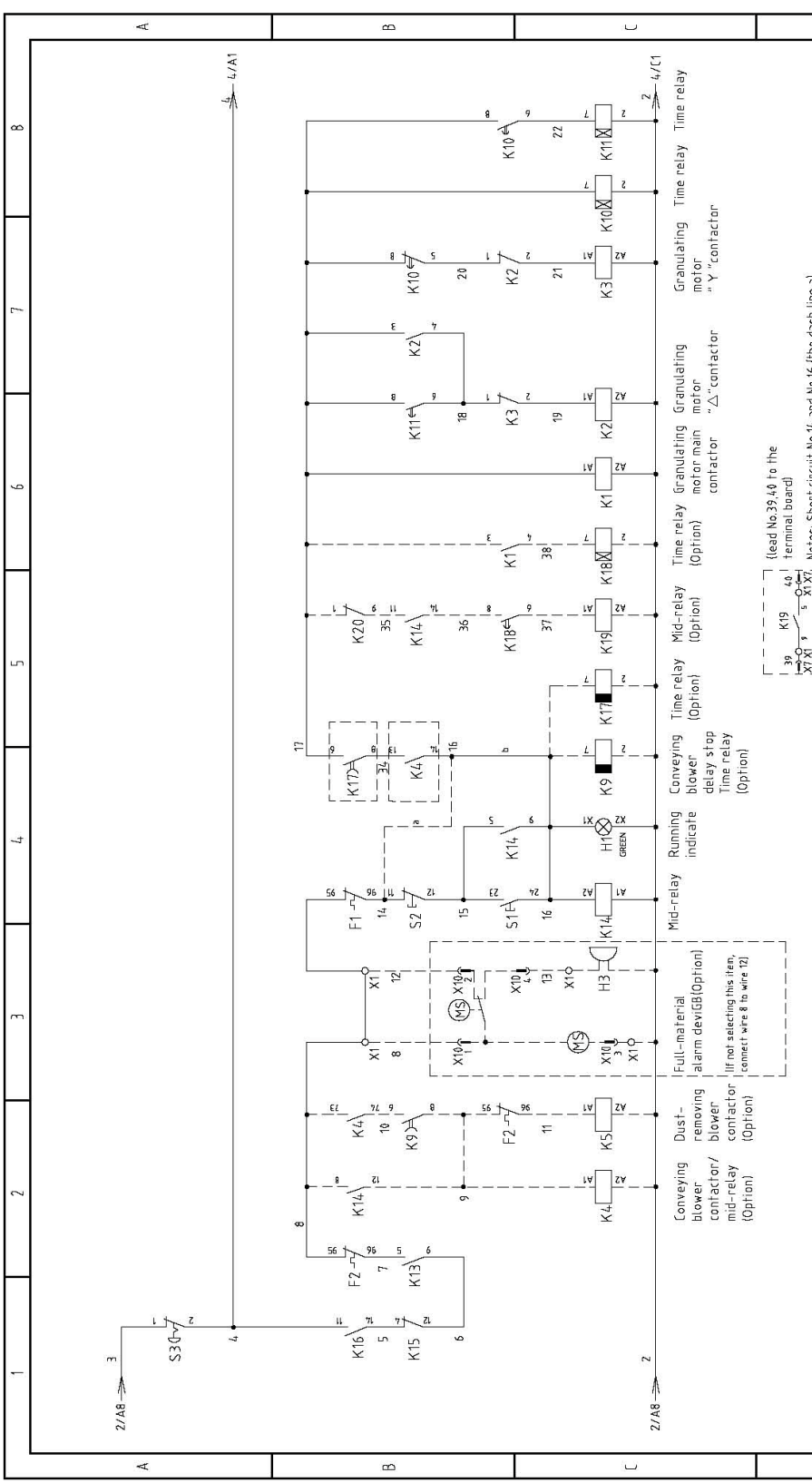


Ver. A	Title		Drawing NO.		Scale	Page 1
	SG-50110E		SG-50110E-GB-400V-0-1		Standard	Totally 8
	Main Circuit Diagram 1				Voltage	400V
					Frequency	50Hz
	Version	Approved by	Date			
	0		2015/0728			
	Drawer	Designer	Checked by			
	Modified by	Modify date				
	Before modification	After modification				

**SHINI**  
信易電熱機械股份有限公司  
Shini Plastics Technologies, Inc.



Ver. A	Title		Drawing NO.		Page		
	SG-50110E		SG-50110E-GB-4.00V-0-2		2		
Main Circuit Diagram 2		Standard		GB		Totally 8	
Voltage		Frequency		400V		50HZ	
Mark		SHINI		信易电热机械股份有限公司 Shini Plasstics Technologies, Inc.			
After modification		Date		20150728			
Modified by		Checked by		Approved by		Version	
0		0		0		0	
3		4		5		8	

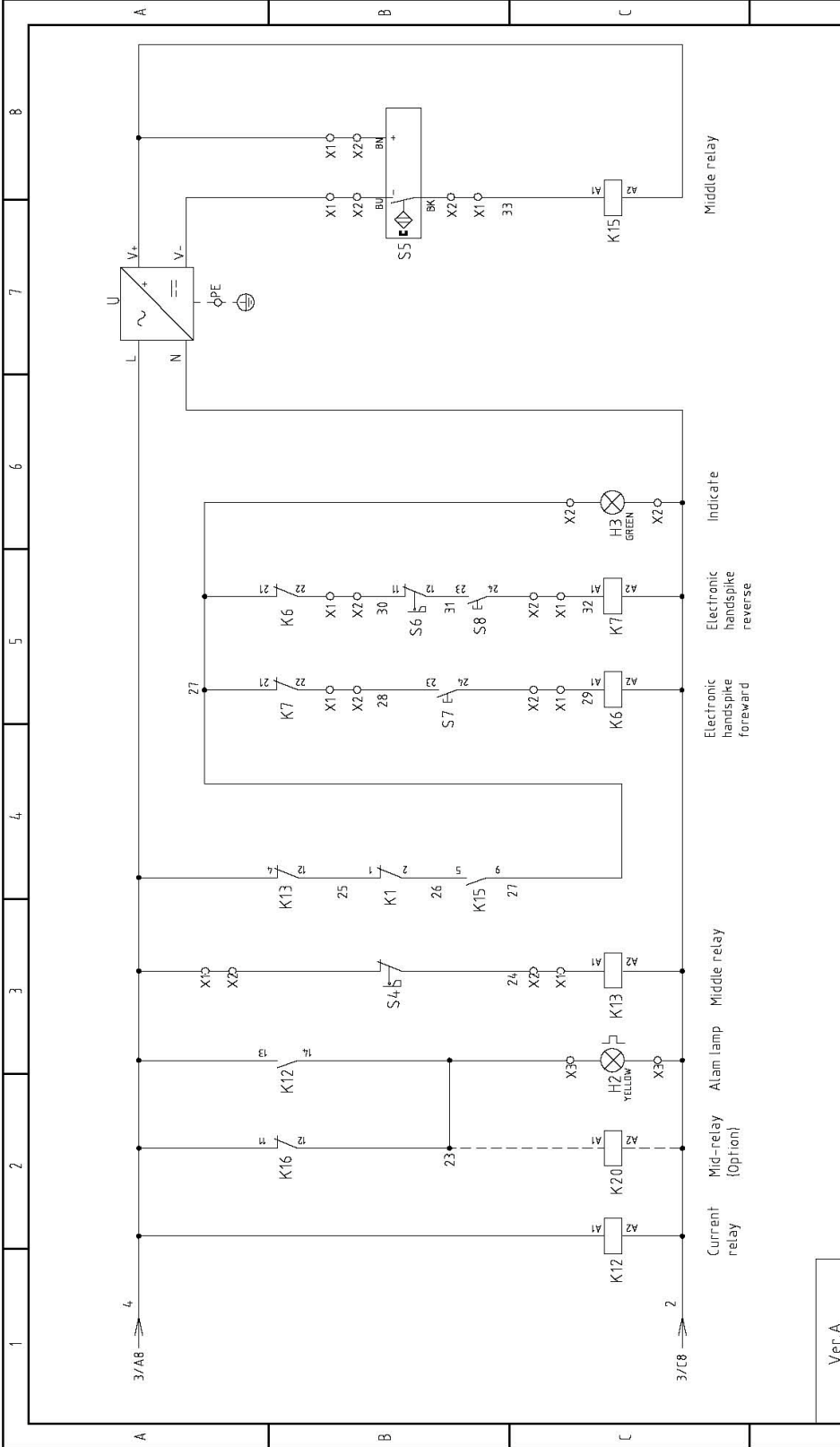


Ver. A		Title		Drawing No.	
		SG-50110E		SG-50110E-GB-4.00V-A-3	
Version		Control Circuit Diagram 1		Scale	
A				Standard GB	
Version		Approved by		Voltage	
				4.00V	
Date		Date		Frequency	
20151015				50HZ	
Mark		Modify date		Pages	
Before modification				Totally 8	
After modification		Modified by		Page 3	
				8	

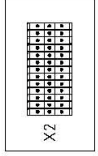
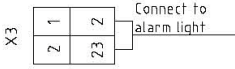
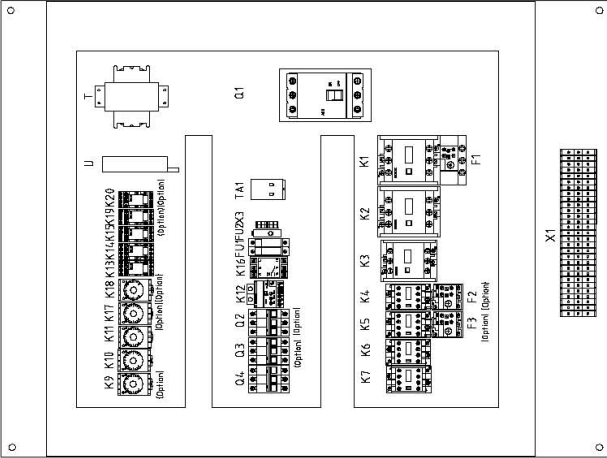
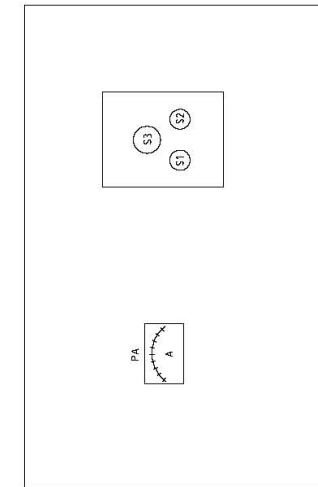


信易電熱機械股份有限公司  
Shini Plastics Technologies, Inc.

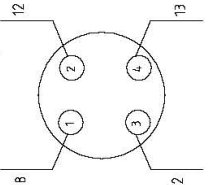
(lead No. 39, 40 to the terminal board)  
Notes: Short circuit No. 14, and No. 16 (the dash line a), disconnect line b under No. 16.



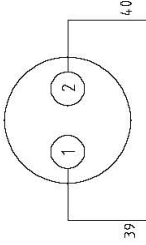
Ver. A		Title		Drawing NO.		Scale		Page	
0		SG-50110E		SG-50110E-GB-4.00V-0-4		Standard		Totally 8	
Control Circuit Diagram 2		0		GB		Voltage		4.00V	
20150728		Date		Frequency		50HZ		8	
SHINI		SHINI		SHINI		SHINI		SHINI	
信易電熱機械股份有限公司		信易電熱機械股份有限公司		信易電熱機械股份有限公司		信易電熱機械股份有限公司		信易電熱機械股份有限公司	
Shini Plastics Technologies, Inc.		Shini Plastics Technologies, Inc.		Shini Plastics Technologies, Inc.		Shini Plastics Technologies, Inc.		Shini Plastics Technologies, Inc.	
20150728		20150728		20150728		20150728		20150728	
2		3		4		5		6	
7		8		9		10		11	
12		13		14		15		16	
17		18		19		20		21	
22		23		24		25		26	
27		28		29		30		31	
32		33		34		35		36	
37		38		39		40		41	
42		43		44		45		46	
47		48		49		50		51	
52		53		54		55		56	
57		58		59		60		61	
62		63		64		65		66	
67		68		69		70		71	
72		73		74		75		76	
77		78		79		80		81	
82		83		84		85		86	
87		88		89		90		91	
92		93		94		95		96	
97		98		99		100		101	
102		103		104		105		106	
107		108		109		110		111	
112		113		114		115		116	
117		118		119		120		121	
122		123		124		125		126	
127		128		129		130		131	
132		133		134		135		136	
137		138		139		140		141	
142		143		144		145		146	
147		148		149		150		151	
152		153		154		155		156	
157		158		159		160		161	
162		163		164		165		166	
167		168		169		170		171	
172		173		174		175		176	
177		178		179		180		181	
182		183		184		185		186	
187		188		189		190		191	
192		193		194		195		196	
197		198		199		200		201	
202		203		204		205		206	
207		208		209		210		211	
212		213		214		215		216	
217		218		219		220		221	
222		223		224		225		226	
227		228		229		230		231	
232		233		234		235		236	
237		238		239		240		241	
242		243		244		245		246	
247		248		249		250		251	
252		253		254		255		256	
257		258		259		260		261	
262		263		264		265		266	
267		268		269		270		271	
272		273		274		275		276	
277		278		279		280		281	
282		283		284		285		286	
287		288		289		290		291	
292		293		294		295		296	
297		298		299		300		301	
302		303		304		305		306	
307		308		309		310		311	
312		313		314		315		316	
317		318		319		320		321	
322		323		324		325		326	
327		328		329		330		331	
332		333		334		335		336	
337		338		339		340		341	
342		343		344		345		346	
347		348		349		350		351	
352		353		354		355		356	
357		358		359		360		361	
362		363		364		365		366	
367		368		369		370		371	
372		373		374		375		376	
377		378		379		380		381	
382		383		384		385		386	
387		388		389		390		391	
392		393		394		395		396	
397		398		399		400		401	
402		403		404		405		406	
407		408		409		410		411	
412		413		414		415		416	
417		418		419		420		421	
422		423		424		425		426	
427		428		429		430		431	
432		433		434		435		436	
437		438		439		440		441	
442		443		444		445		446	
447		448		449		450		451	
452		453		454		455		456	
457		458		459		460		461	
462		463		464		465		466	
467		468		469		470		471	
472		473		474		475		476	
477		478		479		480		481	
482		483		484		485		486	
487		488		489		490		491	
492		493		494		495		496	
497		498		499		500		501	



X10 Connection diagram of metal connectors (option)



X7 Connection diagram of metal connectors (option)



11	10	9	8	7	6	5	4	3	2	1
27	2	4	24	28	29	30	32	V+	V-	33

- Connect to indicator
- Connect to safety switch S4
- Connect to electric button S7
- Connect to position limit switch S6
- Connect to electric button S8
- Connect to electric sensor

X1

34	33	32	31	30	29	28	27	26	25	24	23	22	21	20	19	18	17	16	15	14	13	12	11	10	9	8	7	6	5	4	3	2	1				
27	2	4	24	28	29	30	32	V+	V-	33	-	8	12	2	13	39	40	U5	V5	W5	PE	U4	V4	W4	PE	U3	V3	W3	PE	U2	V2	W2	U1	V1	W1	PE	PE

- Connect to terminal board X2
- Connect to ammeter
- Full-receiver alarm device (optional)
- Connect to control wire of conveyor belt (Option)
- Connect to electronic handspike
- Connect to dust removing blower (Option)
- Connect to conveying blower (option)
- Connect to granulating motor
- Connect to the ground wire of the power supply

Ver.A		Drawing No.		Scale		Page	
		SG-50110E		SG-50110E-GB-400V-0-5		5	
Electrical Components Layout		Standard		GB		Totally 8	
		Voltage		400V		Pages	
		Frequency		50HZ		8	
SHINI		信易電熱機械股份有限公司		Shini Plastics Technologies, Inc.			
Title		Version		Date		Mark	
0		Approved by		2015/07/28		Before modification	
Designer		Proofread by		Modified by		After modification	
Checked by		Checked by		Modify date			

1	2	3	4	5	6	7	8
NO.	Symbol	Name	Manufacturer	Type	Specification	Number	Material number
1	Q1	Breaker interlock	ABB	A2B50TMF200	200A	1	YE41252200000
2	Q2	Circuit breakers	TECO	BM-63C/3032S	32A	1	YE40303203000
3	Q3	Circuit breakers	TECO	BM-63C/3006S	6A	1	YE40300603000
4	Q4	Thermomagnet circuit breaker	CHNT	NS2-25	1.6-2.5A	1	YE10162500100
5	K1,K2	Contact	SIEMENS	3RT5044-1AN20	220V 50/60Hz	2	YE00504400000
6	K3	Contact	SIEMENS	3RT5036-1AN20	220V 50/60Hz	1	YE00503600000
7		Auxiliary contact	SIEMENS	3RH5921-1CA10	1NO	1	YE00592110000
8		Auxiliary contact	SIEMENS	3RH5921-1CA01	1NC	3	YE00592110100
9		Auxiliary contact	SIEMENS	3RH5921-1CA10	1NO	1	YE00592110000
10	K4	Contact	SIEMENS	3RT6027-1AN20	220V 50/60Hz	1	YE00602722000
11		Auxiliary contact	SIEMENS	3RH6911-1AA10	1NO	1	YE00691110000
12	K5	Contact	SIEMENS	3RT6015-1AN21	220V 50/60Hz	1	YE00601521000
13	K6,K7	Contact	SIEMENS	3RT6015-1AN22	220V 50/60Hz	2	YE00601522000
14	K9	Timer	YUYUN	TRF-N	220VAC	1	YE86322000000
15	K10,K11	Timer	YUYUN	TH3A-NAB 60S	220VAC	2	YE86300600000
16	K13,K14	Middle relay	WEIDMULLER	DRM270730LT	220VAC	2	YE03270700000
17	K14	Middle relay	WEIDMULLER	DRM570730LT	220VAC	1	YE03570700000
18	K15	Middle relay	WEIDMULLER	DRM270024LT	24VDC	1	YE03272400000
19	K12	Current realy	SCHNEIDER	LT4-760M7A	220VAC 5-60A	1	YE04047600000
20	K16	Fault phase relay	CHAOSHI	ABJ1-10W	380VAC 50/60Hz	1	YE03103800000
21	K17	Timer	YUYUN	TRF-N	220VAC	1	YE86322000000
22	K18	Timer	YUYUN	TH3A-NAB 60S	220VAC	1	YE86300600000
23	K19,K20	Middle relay	WEIDMULLER	DRM270730LT	220VAC	2	YE03270700000
24	F1	Overload relay	SIEMENS	3RU5146-4JB0	45-63A	1	YE01514640000
25	F2	Overload relay	SIEMENS	3RU6126-4BB0	14-20A	1	YE01260140000
Ver-A	Notes: (2) Means accessories for material conveying blower;(4)Means optional accessories of dedusting blower; (5) When optional with conveyor belt.						
D	Drawing NO		Title		Scale		Page
	SG-50110E		SG-50110E		SG-50110E-GB-400V-0-6		6
	Electrical Components List 1				Standard		Totally 8
					GB		Pages
					Voltage		400V
					Frequency		50Hz
Mark	Before modification	After modification	Modified by	Modify date	Checked by	Approved by	Version
				20150728			0



1	2	3	4	5	5	7	8	
NO	Symbol	Name	Manufacturer	Type	Specification	Number	Material number	Remark
26	F3	Overload relay	SIEMENS	3RU6116-1DB0	2.2-3.2A	1	YE01160220000	(4)
27	FU1	Fuse**	CHINT	RT28-32	32A/2P	1	YE41032200000	
28	FU2	Fuse core	MRO	MRO/2A110x381500V	2A Fuse core	2	YE46002000100	
29	FU2	Fuse**	YINDA	FS-10	2A	1	YE41001000000	
30	H2	Alarm light	SHINI	LED-3051	230VAC	1	YE83305100200	(1)
31	TA1	Current transformer	RATIO	RCT-35	150/5A	1	YE04150500000	
32	PA	Ammeter	SFIM	DH-670	150/5A	1	YE25671500000	(1)
33	H4	Indicate lamp	ABB	CL-523G	GREEN	1	YE83052300200	(1)
34	S1(H),S7,S8	Start button	SCHNEIDER	XB2BW33M1C	4.00VAC	3	YE11231000000	
35	S2	Stop button	SCHNEIDER	XB2BA22C	4.00VAC	1	YE11222000000	
36	S3	Emergency stop button	SCHNEIDER	XB2BS542C	4.00VAC	1	YE11254200000	
37	H3	Buzzer	TEND	EA-2	220VAC	1	YEB4222000000	(1)(3)
38	MS	Material level switch	SIPAI	SR-80	220VAC	1	YE15000200100	(1)(3)
39	S4	Safety switch	SCHMERSAL	AZ 15ZVK-14.76	AC-15	1	YE1614.7600100	(1)
40	S5	Inductive sensor	DELIN	DL-12	24VDC	1	YE15122400000	(1)
41	S6	Limit switch	SCHMERSAL	ZS 336-11Z	-----	1	YE14.332100000	
42	T	Transformer*	BAIJUN	IN=4.00V OUT=230V	2500mA	1	YE704.023004.00	(5)
43	U	DC power	MEAN WELL	NES-35-24	OUT=24VDC 1.5A	1	YE713524.00100	
44	X1	Terminal board	NACHI	50mm <sup>2</sup> PE	NCT-50PE	1	YE6100504.0100	
45			PHOENIX	16mm <sup>2</sup>	----	6	YE61160000000	
46			PHOENIX	16mm <sup>2</sup> PE	----	1	YE61163500000	
47			PHOENIX	2.5mm <sup>2</sup>	----	14	YE6125004.00000	
48			PHOENIX	2.5mm <sup>2</sup> PE	----	1	YE61253500000	
49			PHOENIX	2.5mm <sup>2</sup>	----	3	YE6125004.00000	(2)
50			PHOENIX	2.5mm <sup>2</sup> PE	----	1	YE61253500000	(2)

Ver. A Notes: (1)Means it's not the material inside the control box.(2) Means accessories for material conveying blower.(3) Means optional accessories of full-receive alarm device.  
(4)Means optional accessories of dusting blower.(5) When optional with conveyor belt.

D		Title		Drawing NO.		Scale		Page	
		SG-50110E		SG-50110E-GB-4.00V-0-7		Standard		7	
		Electrical Components List 2				GB		8	
						Voltage		4.00V	
						Frequency		50HZ	
Mark		Before modification	After modification	Modified by	Modify date	Checked by	Date	20150728	
		Designer	Proofread by	Approved by	Version	0		SHINI	
		信易電熱機械股份有限公司		Shini Plastics Technologies, Inc.					



