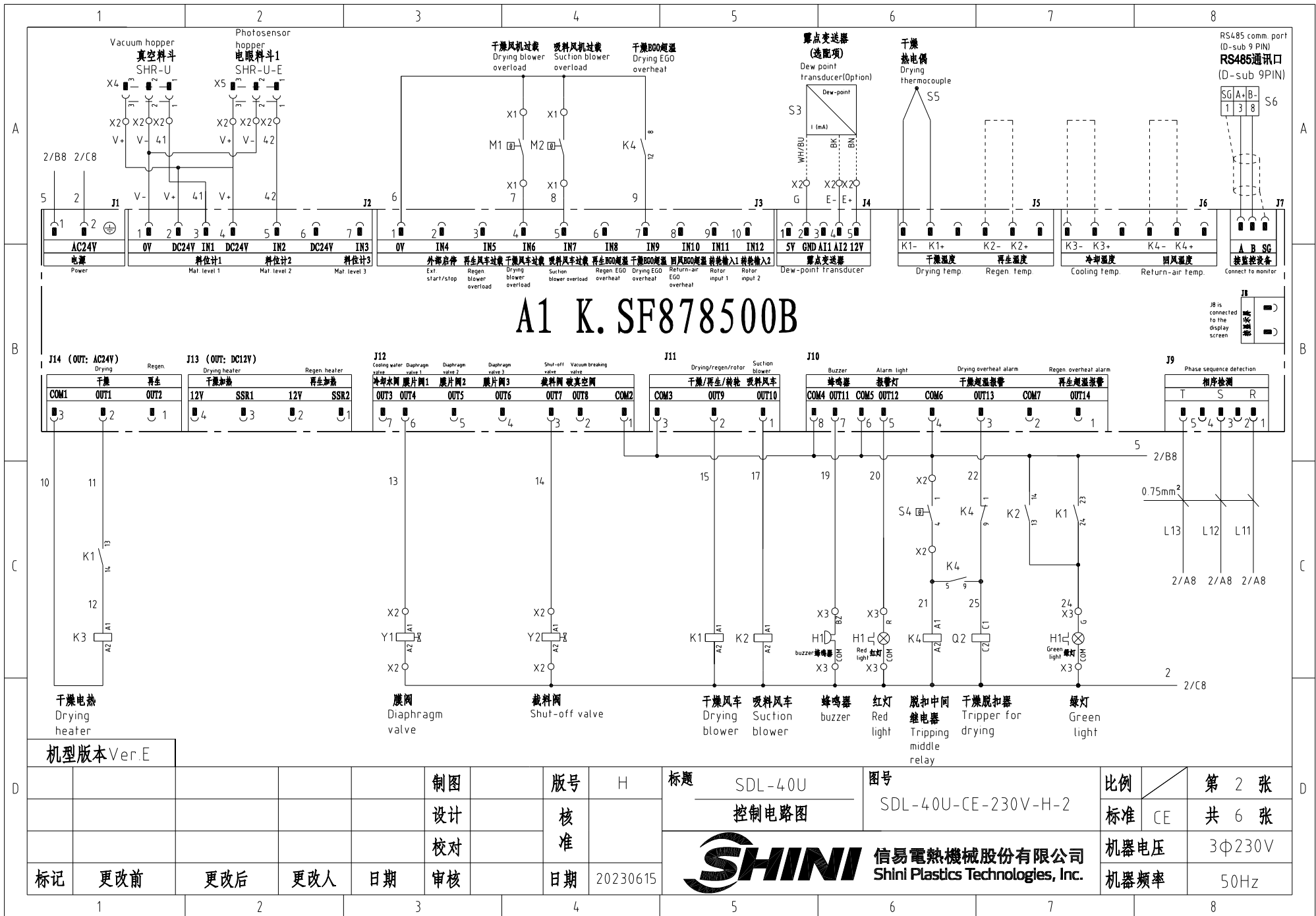


机型版本 Ver.E

D						制图	版号	H	标题	SDL-40U	图号	SDL-40U-CE-230V-H-1	比例	第 1 张
						设计	核准		主电路图		标准	CE	共 6 张	
						校对	核准				机器电压	3Φ230V		
	标记	更改前	更改后	更改人	日期	审核	日期	20230615			SHINI 信易電熱機械股份有限公司 Shini Plastics Technologies, Inc.	机器频率	50Hz	



# A1 K.SF878500B

机型版本 Ver.E

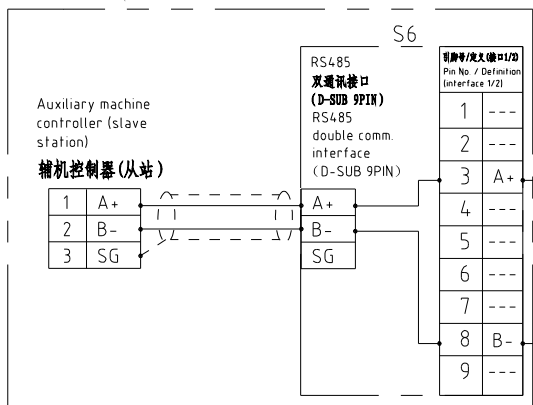
					制图	版本号	H	标题	SDL-40U	图号	比例	第 2 张
					设计	核准			控制电路图	SDL-40U-CE-230V-H-2	标准	共 6 张
					校对	核准					机器电压	3Φ230V
标记	更改前	更改后	更改人	日期	审核	日期	20230615				机器频率	50Hz



## 信易辅机RS-485通讯接线示意图

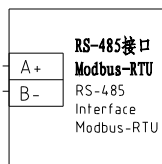
Shini auxiliary machine RS-485 comm. wiring diagram

信易辅机(从站)Shini auxiliary machine (slave station)



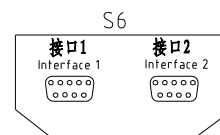
上位机(外部控制主站)  
PC/PLC/HMI

Host computer (ext. control master station)  
PC/PLC/HMI



## 信易RS-485接口定义

Shini RS-485 interface definition



D-sub-9针接口 D-sub-9 pin interface	引脚号 Pin No.	引脚定义 Pin definition
	1	-
	2	-
	3	A+ (RS-485 信号) A+ (RS-485 signal)
	4	-
	5	-
	6	-
	7	-
	8	B- (RS-485 信号) B- (RS-485 signal)
	9	-

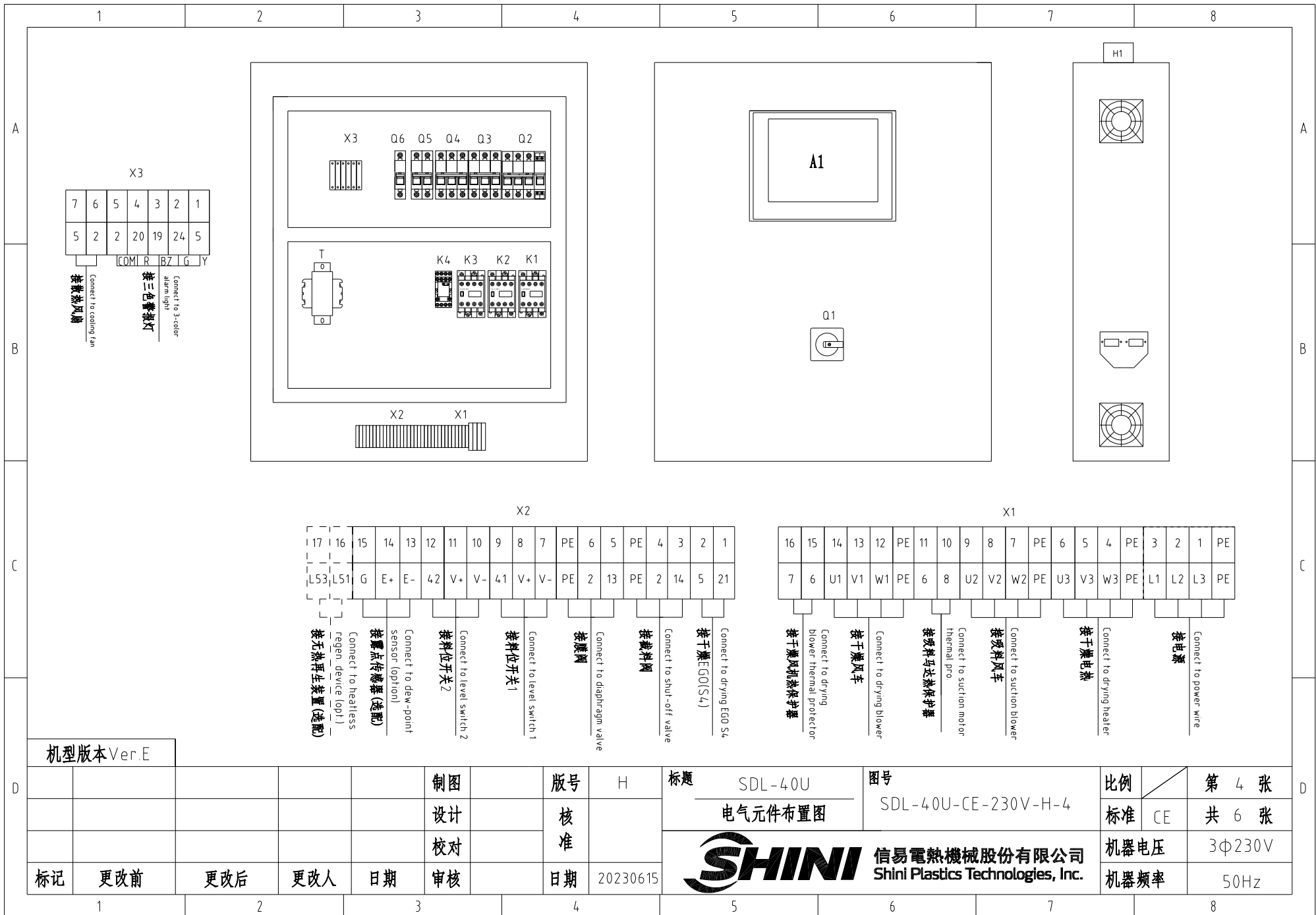
- 注: 1. 通讯接口: RS-485 (两线式)  
2. 通讯协议: Modbus-RTU  
3. 机器配备D-sub9母接头, 接口1和接口2内部并联, 功能相同, 不分主次;

Note:

1. Comm. interface: RS-485 (two wire)  
2. Comm. protocol: Modbus-RTU  
3. The machine is equipped with D-sub9 female connector; interface 1 and interface 2 are connected in parallel and have the same function, which is regardless of primary and secondary.

机型版本 Ver.E

						制图	版号	H	标题	SDL-40U	图号	比例	第 3 张	
						设计	核		通讯接口接线图	SDL-40U-CE-230V-H-3		标准	CE	共 6 张
						校对	准							
标记	更改前	更改后	更改人	日期	审核	日期	20230615		<b>信易電熱機械股份有限公司</b> <b>Shini Plastics Technologies, Inc.</b>	机器电压	3φ230V			
								机器频率		50Hz				

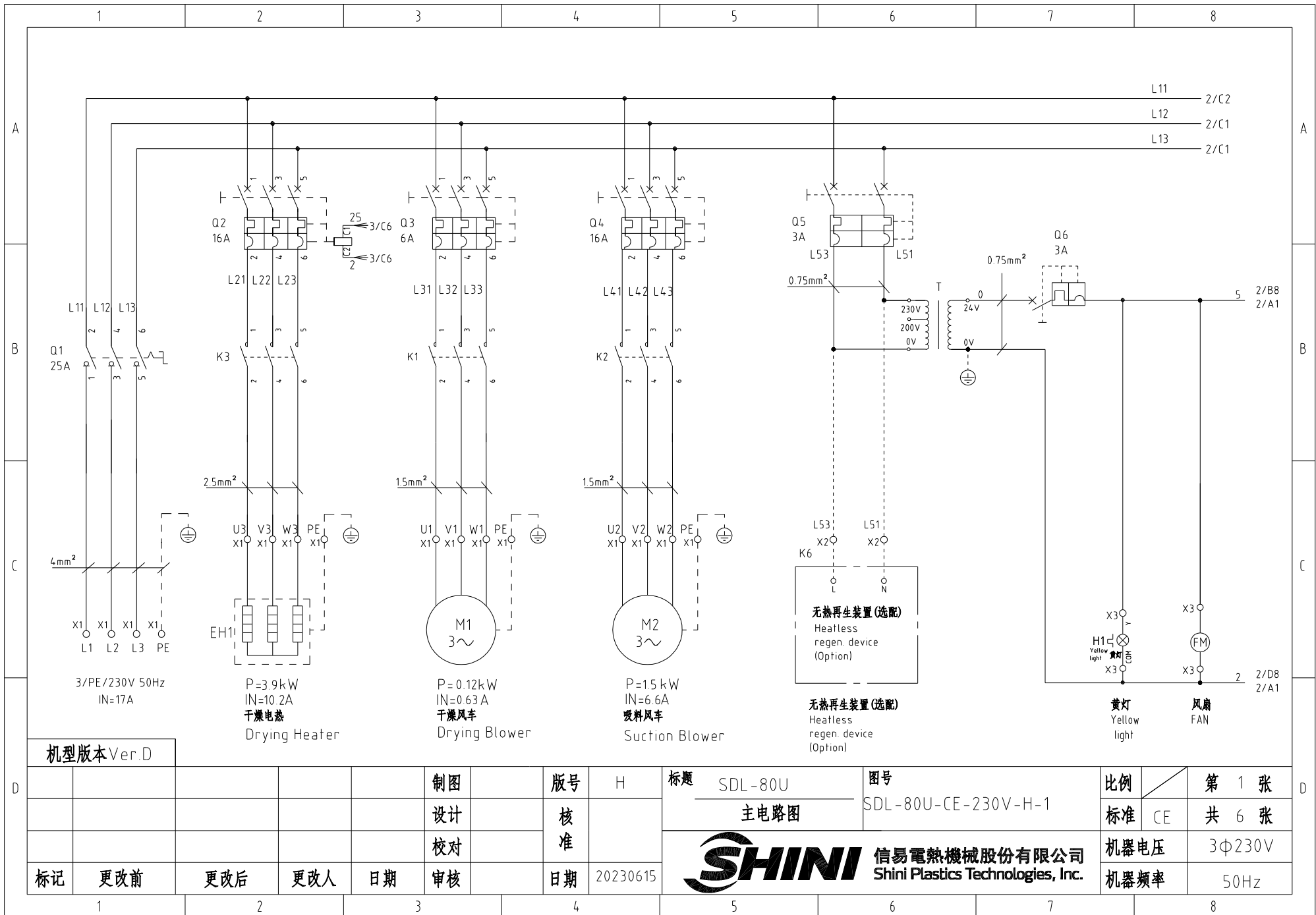


机型版本 Ver.E

				制图		版号		H		标题		图号		比例		第 4 张	
				设计		核准				SDL-40U 电气元件布置图		SDL-40U-CE-230V-H-4		标准		共 6 张	
				校对						SHINI 信易电热机械股份有限公司 Shini Plastics Technologies, Inc.		机器电压		3Φ230V			
标记		更改前		更改后		更改人		日期				20230615		机器频率		50Hz	

1		2		3		4		5		6		7		8	
序号/NO.	符号/Symbol	名称/Name		制造商/Manufacturer		型号/Type		规格/Specification		数量/Number	物料编号/Material number		备注/Remark		
1	Q1	主电源开关/Main power switch		EATON		P1-25/EA/SVB		25A		1	YE10125250000				
2	Q2	断路器/Circuit breaker		TECO		BM-63C/3010S		10A		1	YE40301003000				
3		励磁脱扣器/Excitation release		YIJIN		MX		24V 50/60Hz		1	YE40024000000				
4	Q3	断路器/Circuit breaker		TECO		BM-63C/3006S		6A		1	YE40300603000				
5	Q4	断路器/Circuit breaker		TECO		BM-63C/3016S		16A		1	YE40301603000				
6	Q5	断路器/Circuit breaker		TECO		BM-63C/2003S 3A 2P		3A		1	YE40200203000				
7	Q6	断路器/Circuit breaker		TECO		BM-63C/1003S 3A 1P		3A		1	YE40100203000				
8	K1	交流接触器/AC Contactor		SIEMENS		3RT6015-1AB01		24V 50/60Hz		1	YE00601502500				
9		辅助触点 Auxiliary contactor		SIEMENS		3RH6911		1AA10		1	YE00691110000				
10	K2 K3	交流接触器/AC Contactor		SIEMENS		3RT6017-1AB01		24V 50/60Hz		2	YE00601702500				
11	K4	中间继电器/Middle relay		Honeywell		GR-2C-AC24V		底座 base PGR-2C-E		1	YE03022400300				
12	T	变压器/Transformer		JIUXIN		IN=230V/200V OUT=24V		180VA		1	YE70023005400				
13	A1	微电脑控制板-微电脑显示屏 Microprocessor control board-Microprocessor displayer		PUMP		K.SF878500B		AC24V		1	YE81878500300				
14	H1	三色警报灯+蜂鸣器 Three-color alarm lamp+ buzzer		SHINI		优先级 Priority		24V 50/60Hz		1	BL90002401520		(1)		
15	S3	露点变送器/Dew-point transducer		VAISALA		DMT141		POWER=24VDC OUT=4-20mA		1	YE90014100100		(1)(2)		
16	S6	通信接口板RS-485(双Dsub-9pin接头) Communication interface board RS-485 (double Dsub-9pin connector)		YUYUN		----		----		1	YE90048501200				
17		外壳RS485(SAL-700C-1-19)0版 Shell RS485(SAL-700G-A-19)0		BINCHENG		----		----		1	YR40048500000				
18	X1 X2 X3	端子排/Terminal board		HONEYWELL		SK4		4mm <sup>2</sup>		16	YE60000403200				
19		端子排/Terminal board		HONEYWELL		GK5PE		4mm <sup>2</sup> PE		4	YE60000403500				
20		端子排/Terminal board		HONEYWELL		SK2.5		2.5mm <sup>2</sup>		22	YE60002503200				
21		端子排/Terminal board		HONEYWELL		GK2.5PE		2.5mm <sup>2</sup> PE		2	YE60002503400				
22		端子排/Terminal board		HONEYWELL		SK2.5		2.5mm <sup>2</sup>		2	YE60002503200		(3)		
23		终端固定件E/GK系列 Terminal fittings E/GK series		HONEYWELL		E		GK		5	YE60000003900				
24	X4 X5	重载接头/Heavy Duty Connector		HARTING		4P+PE(母座Female)Han 4A-F		4P		2	YE68000401400		(1)		
25	S4	温度保护器/Overheat protector		EGO		----		115-320°		1	----		(1)		
机型版本 Ver.E		注: (1)表示非电控箱内材料 (2)表示选配露点计 (3)表示选配无热再生装置-HD Notes: (1)Means it's not the material inside the control box. (2)Means accessories for Dew-point transducer. (3)Means optional heatless regen. device-HD.													
				制图		版号 H		标题 SDL-40U		图号		比例		第 5 张	
				设计		核 准		电气元件明细表一		SDL-40U-CE-230V-H-5		标准 CE		共 6 张	
				校对				 <b>信易電熱機械股份有限公司</b> <b>Shini Plastics Technologies, Inc.</b>		机器电压		3Φ230V			
标记		更改前		更改后		更改人				日期		20230615		机器频率	
1		2		3		4		5		6		7		8	



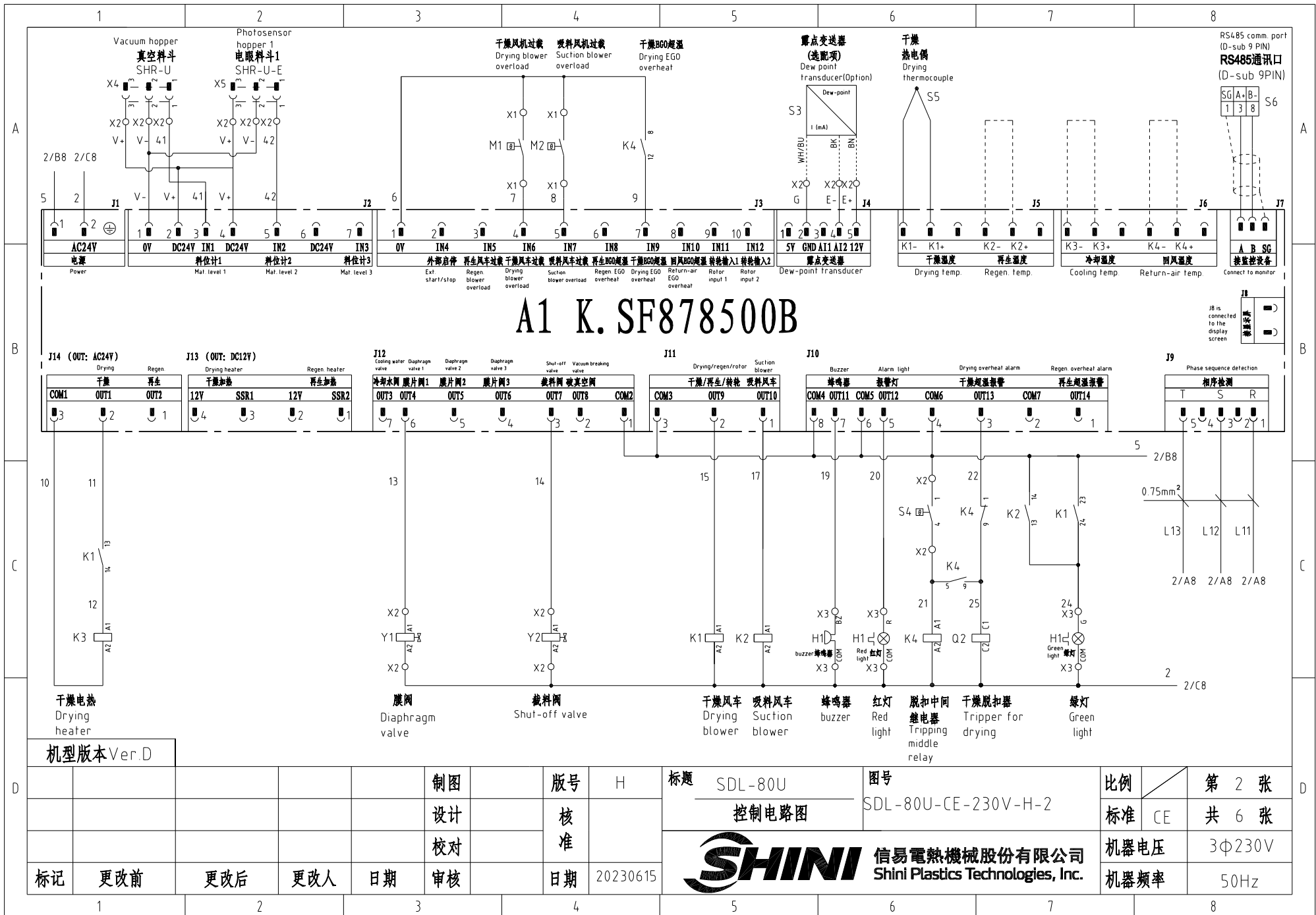


机型版本 Ver.D

制图	版号	H	标题	SDL-80U	图号	SDL-80U-CE-230V-H-1	比例	第 1 张	
设计	核准		主电路图			标准	CE	共 6 张	
校对	核准					机器电压		3Φ230V	
标记	更改前	更改后	更改人	日期	审核	日期	20230615	机器频率	50Hz



第 1 张
共 6 张
3Φ230V
50Hz

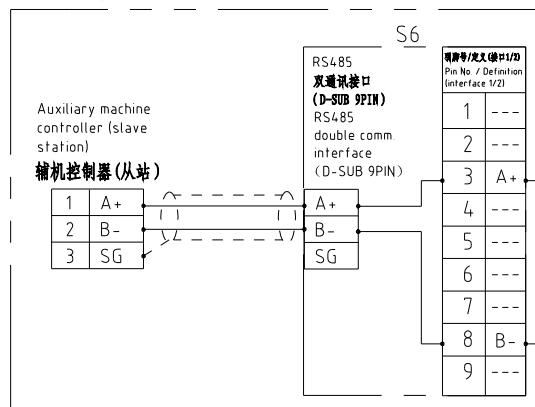




## 信易辅机RS-485通讯接线示意图

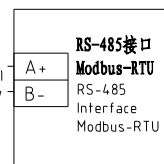
Shini auxiliary machine RS-485 comm. wiring diagram

信易辅机(从站)Shini auxiliary machine (slave station)

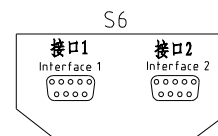


上位机(外部控制主站)  
PC/PLC/HMI

Host computer (ext. control master station)  
PC/PLC/HMI



信易RS-485接口定义  
Shini RS-485 interface definition



D-sub-9针接口 D-sub-9 pin interface	引脚号 Pin No.	引脚定义 Pin definition
	1	-
	2	-
	3	A+ (RS-485 信号) A+ (RS-485 signal)
	4	-
	5	-
	6	-
	7	-
	8	B- (RS-485 信号) B- (RS-485 signal)
	9	-

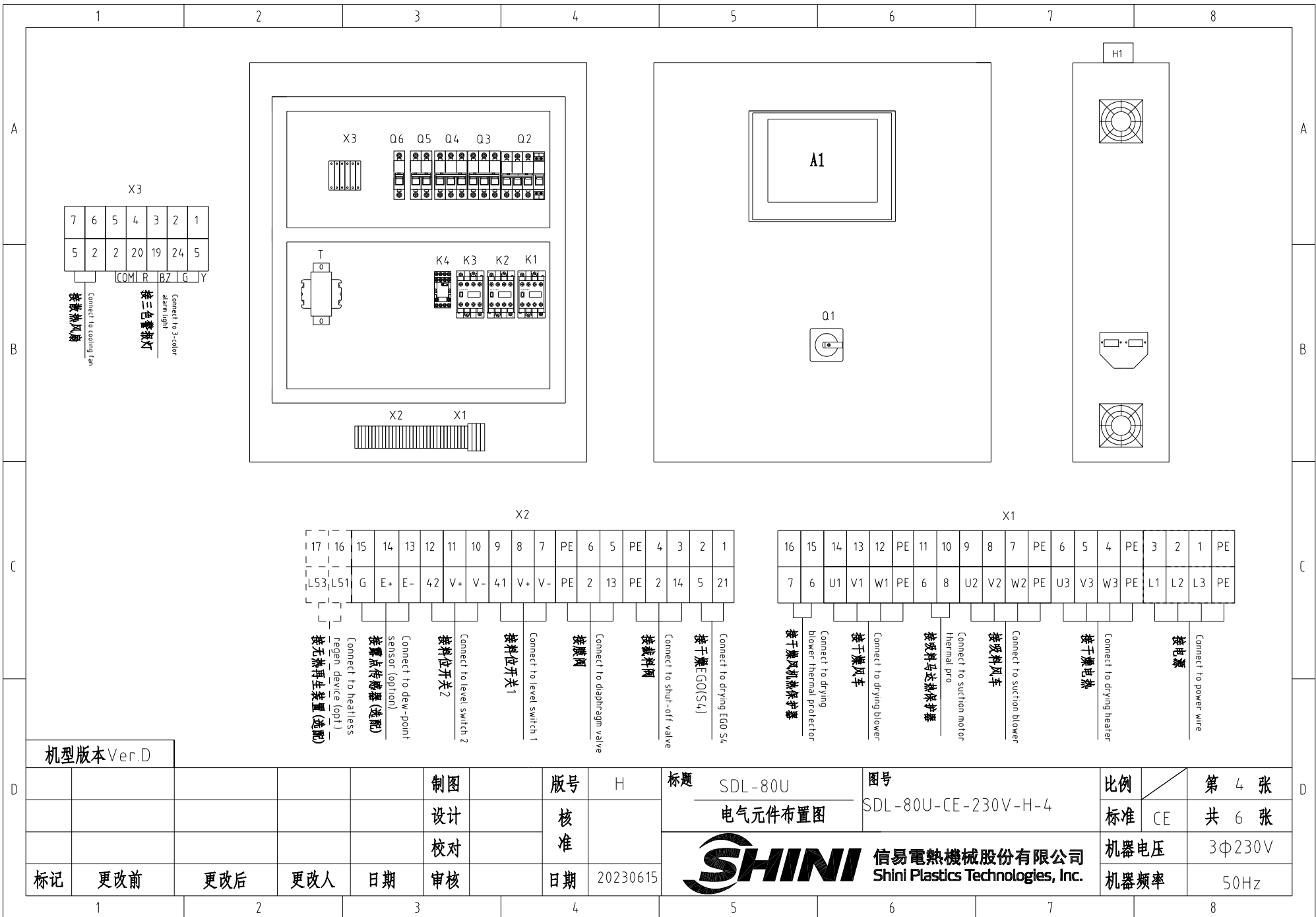
- 注: 1. 通讯接口: RS-485 (两线式)  
2. 通讯协议: Modbus-RTU  
3. 机器配备D-sub9母接头, 接口1和接口2内部并联, 功能相同, 不分主次;

Note:


1. Comm. interface: RS-485 (two wire)  
2. Comm. protocol: Modbus-RTU  
3. The machine is equipped with D-sub9 female connector, interface 1 and interface 2 are connected in parallel and have the same function, which is regardless of primary and secondary.

机型版本 Ver.D

					制图		版号	H	标题	SDL-80U	图号		比例		第 3 张
					设计		核		通讯接口接线图	SDL-80U-CE-230V-H-3		标准	CE	共 6 张	
					校对		准		信易電熱機械股份有限公司 Shini Plastics Technologies, Inc.			机器电压	3Φ230V		
标记	更改前	更改后	更改人	日期	审核	日期	20230615			机器频率	50Hz				

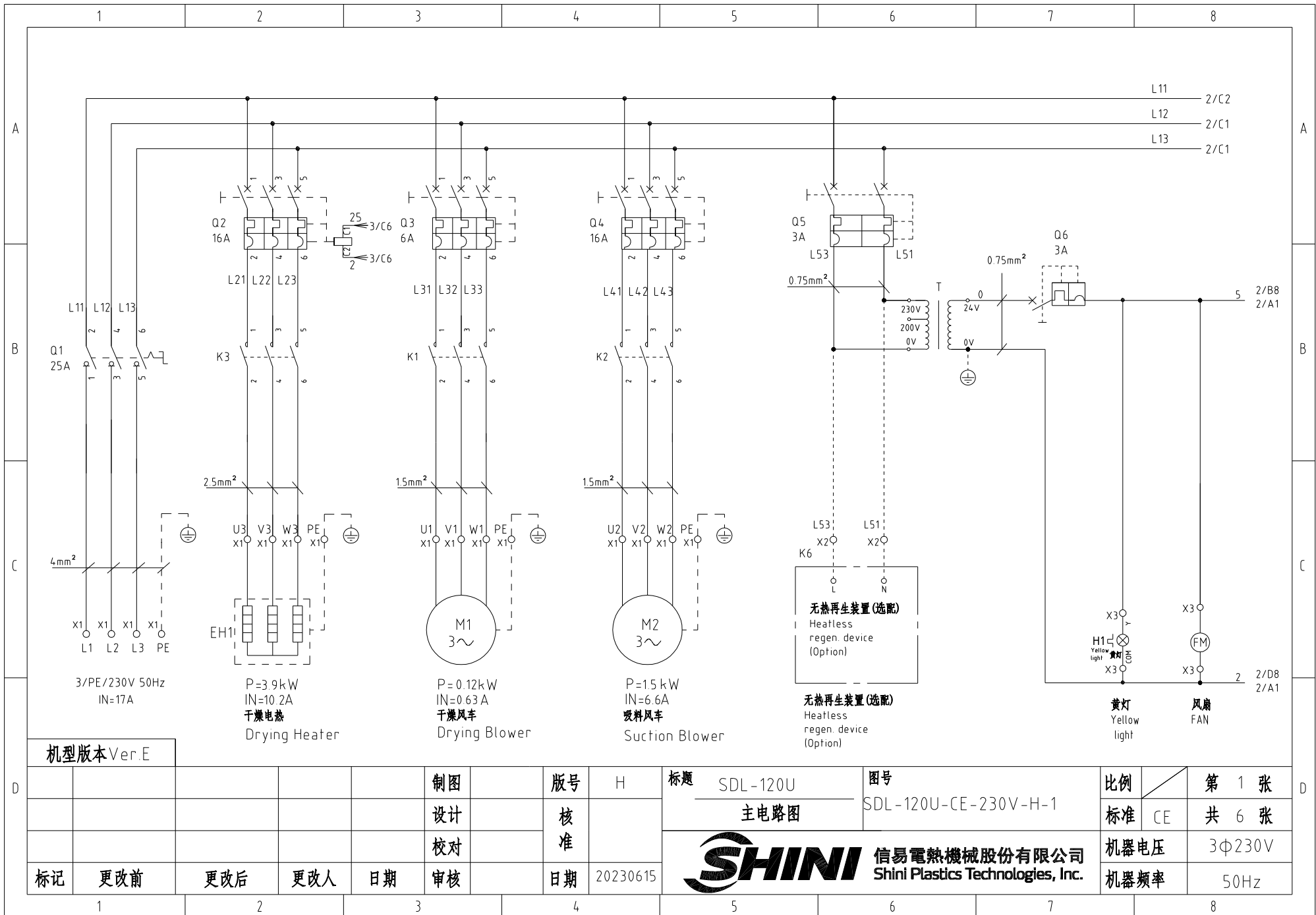


机型版本 Ver.D

标记	更改前	更改后	更改人	日期	制图	版号	H	标题	SDL-80U 电气元件布置图	图号	SDL-80U-CE-230V-H-4	比例	第 4 张
					设计	核准				标准	CE	共 6 张	
					校对				 <b>信易电热机械股份有限公司</b> <b>Shini Plastics Technologies, Inc.</b>	机器电压	3Φ230V		
					审核	日期	20230615	机器频率		50Hz			

1		2		3		4		5		6		7		8	
序号/NO.	符号/Symbol	名称/Name		制造商/Manufacturer		型号/Type		规格/Specification		数量/Number	物料编号/Material number		备注/Remark		
1	Q1	主电源开关/Main power switch		EATON		P1-25/EA/SVB		25A		1	YE10125250000				
2	Q2 Q4	断路器/Circuit breaker		TECO		BM-63C/3016S		16A		2	YE40301603000				
3		励磁脱扣器/Excitation release		YIJIN		MX		24V 50/60Hz		1	YE40024000000				
4	Q3	断路器/Circuit breaker		TECO		BM-63C/3006S		6A		1	YE40300603000				
5	Q5	断路器/Circuit breaker		TECO		BM-63C/2003S 3A 2P		3A		1	YE40200203000				
6	Q6	断路器/Circuit breaker		TECO		BM-63C/1003S 3A 1P		3A		1	YE40100203000				
7	K1	交流接触器/AC Contactor		SIEMENS		3RT6015-1AB01		24V 50/60Hz		1	YE00601502500				
8		辅助触点 Auxiliary contactor		SIEMENS		3RH6911		1AA10		1	YE00691110000				
9	K2	交流接触器/AC Contactor		SIEMENS		3RT6017-1AB01		24V 50/60Hz		1	YE00601702500				
10	K3	交流接触器/AC Contactor		SIEMENS		3RT6018-1AB01		24V 50/60Hz		1	YE00601802500				
11	K4	中间继电器/Middle Relay		Honeywell		GR-2C-AC24V		底座 base PGR-2C-E		1	YE03022400300				
12	T	变压器/Transformer		JIUXIN		IN=230V/200V OUT=24V		180VA		1	YE70023005400				
13	A1	微电脑控制板·微电脑显示屏 Microprocessor control board·Microprocessor displayer		PUMP		K SF878500B		AC24V		1	YE81878500300				
14	H1	三色警报灯·蜂鸣器 Three-color alarm lamp· buzzer		SHINI		优先级 Priority		24V 50/60Hz		1	BL90002401520		(1)		
15	S3	露点变送器/Dew-point transducer		VAISALA		DMT141		POWER=24VDC OUT=4-20mA		1	YE90014100100		(1)(2)		
16	S6	通信接口板RS-485(双Dsub-9pin接头) Communication interface board RS-485 (double Dsub-9pin connector)		YUYUN		----		----		1	YE90048501200				
17		外壳RS485(SAL-700C-A-19)0版 Shell RS485(SAL-700C-A-19)0		BINCHENG		----		----		1	YR40048500000				
18	X1 X2 X3	端子排/Terminal board		HONEYWELL		SK4		4mm <sup>2</sup>		16	YE60000403200				
19		端子排/Terminal board		HONEYWELL		GK5PE		4mm <sup>2</sup> PE		4	YE60000403500				
20		端子排/Terminal board		HONEYWELL		SK2.5		2.5mm <sup>2</sup>		22	YE60002503200				
21		端子排/Terminal board		HONEYWELL		GK2.5PE		2.5mm <sup>2</sup> PE		2	YE60002503400				
22		端子排/Terminal board		HONEYWELL		SK2.5		2.5mm <sup>2</sup>		2	YE60002503200		(3)		
23		终端固定件E/GK系列 Terminal fittings E/GK series		HONEYWELL		E		GK		5	YE60000003900				
24	X4 X5	重载接头/Heavy Duty Connector		HARTING		4P+PE(母座 Female)Han 4A-F		4P		2	YE68000401400		(1)		
25	S4	温度保护器/Overheat protector		EGO		----		115-320°		1	----		(1)		
机型版本 Ver.D		注: (1)表示非电控箱内材料 (2)表示选配露点计 (3)表示选配无热再生装置-HD Notes: (1)Means it's not the material inside the control box (2)Means accessories for Dew-point transducer. (3)Means optional heatless regen. device-HD.													
				制图		版号 H		标题 SDL-80U		图号		比例		第 5 张	
				设计		核 准		电气元件明细表一		SDL-80U-CE-230V-H-5		标准 CE		共 6 张	
				校对		日期 20230615		 <b>信易電熱機械股份有限公司</b> <b>Shini Plastics Technologies, Inc.</b>		机器电压		3Φ230V			
标记		更改前		更改后		更改人				日期		机器频率		50Hz	
1		2		3		4		5		6		7		8	

1		2		3		4		5		6		7		8	
序号/NO.	符号/Symbol	名称/Name			制造商/Manufacturer		型号/Type		规格/Specification		数量/Number	物料编号/Material number		备注/Remark	
26	S5	热电偶/Thermocouple			SHINI		ST-K		K		1	----		(1)	
27	FM	风扇/FAN			SUNON		DP-200A		24VAC 40W		1	----		(1)	
28	Y1,Y2	电磁阀/Solenoid valve			----		----		----		2	----		(1)	
29	M1	风车/Blower			SHINI		----		----		1	----		(1)	
30	M2	风车/Blower			SHINI		----		----		1	----		(1)	
31	EH	电热管/Pipe heater			SHINI		----		----		1	----		(1)	
机型版本 Ver.D		注: (1)表示非电控箱内材料 (2)表示选配露点计 (3)表示选配无热再生装置-HD Notes: (1)Means it 's not the material inside the control box. (2)Means accessories for Dew-point transducer. (3)Means optional heatless regen. device-HD													
					制图		版本号	H	标题	SDL-80U	图号		比例		第 6 张
					设计		核		电气元件明细表二	SDL-80U-CE-230V-H-6		标准	CE	共 6 张	
					校对		准		 信易電熱機械股份有限公司 Shini Plastics Technologies, Inc.			机器电压	3φ230V		
标记	更改前	更改后	更改人	日期	审核	日期	20230615					机器频率	50Hz		
1		2		3		4		5		6		7		8	



机型版本 Ver.E

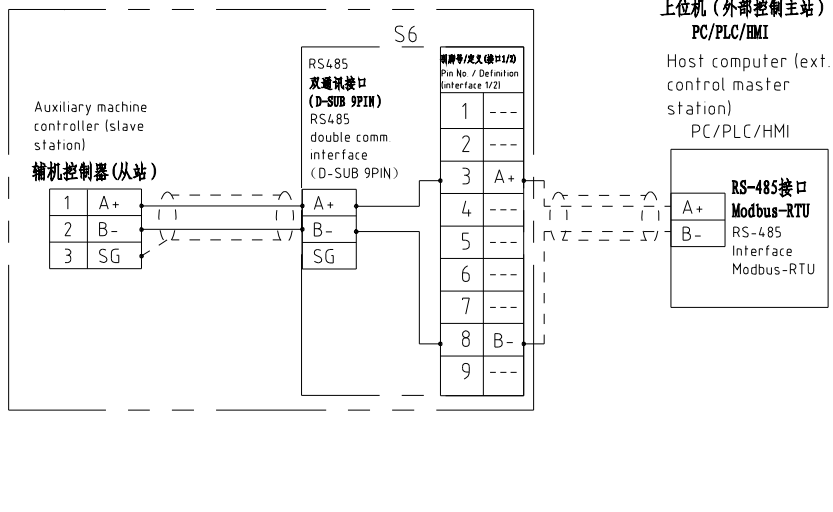
					制图	版号	H	标题	SDL-120U	图号	SDL-120U-CE-230V-H-1	比例	第 1 张
					设计	核准		主电路图		标准	CE	共 6 张	
					校对	核准		 <b>信易電熱機械股份有限公司</b> <b>Shini Plastics Technologies, Inc.</b>		机器电压	3Φ230V		
标记	更改前	更改后	更改人	日期	审核	日期	20230615			机器频率	50Hz		



## 信易辅机RS-485通讯接线示意图

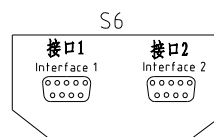
Shini auxiliary machine RS-485 comm. wiring diagram

信易辅机(从站)Shini auxiliary machine (slave station)



## 信易RS-485接口定义

Shini RS-485 interface definition



D-sub-9针接口 D-sub-9 pin interface	引脚号 Pin No.	引脚定义 Pin definition
	1	-
	2	-
	3	A+ (RS-485 信号) A+ (RS-485 signal)
	4	-
	5	-
	6	-
	7	-
	8	B- (RS-485 信号) B- (RS-485 signal)
	9	-

注: 1. 通讯接口: RS-485 (两线式)

2. 通讯协议: Modbus-RTU

3. 机器配备D-sub9母接头, 接口1和接口2内部并联, 功能相同, 不分主次;

Note:

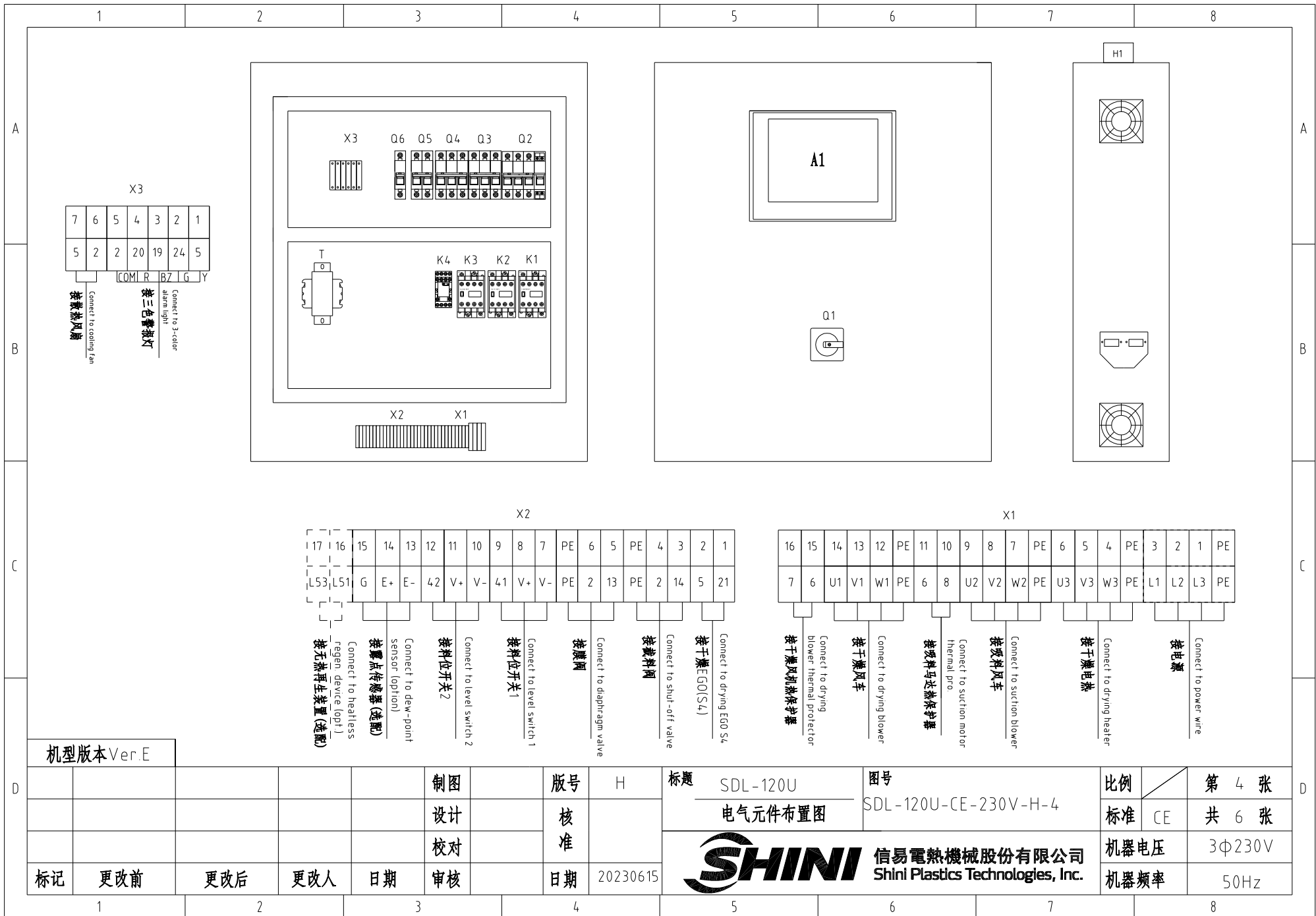
1. Comm. interface: RS-485 (two wire)

2. Comm. protocol: Modbus-RTU

3. The machine is equipped with D-sub9 female connector; interface 1 and interface 2 are connected in parallel and have the same function, which is regardless of primary and secondary.

机型版本 Ver.E

					制图		版号	H	标题	SDL-120U	图号		比例		第 3 张
					设计		核		通讯接口接线图	SDL-120U-CE-230V-H-3	标准	CE	共 6 张		
					校对		准								
标记	更改前	更改后	更改人	日期	审核		日期	20230615		信易電熱機械股份有限公司 Shini Plastics Technologies, Inc.	机器电压	3Φ230V			
								机器频率			50Hz				



机型版本 Ver.E

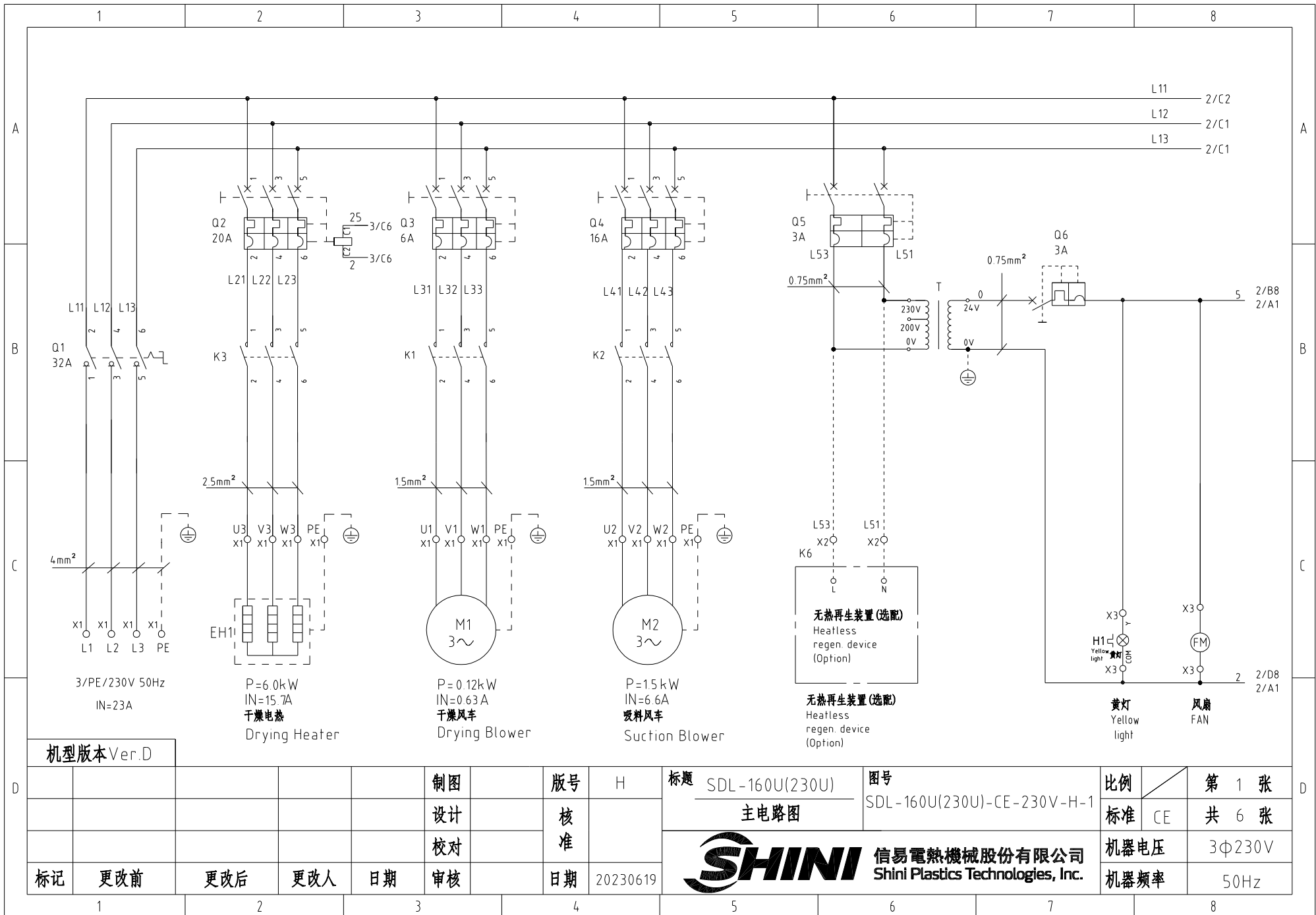
标记	更改前	更改后	更改人	日期	审核	制图	版号	H	标题	SDL-120U 电气元件布置图	图号	SDL-120U-CE-230V-H-4	比例	第 4 张
							核准					标准	CE	共 6 张
							核准						机器电压	3Φ230V
							日期	20230615					机器频率	50Hz





1		2		3		4		5		6		7		8	
序号/NO.	符号/Symbol	名称/Name		制造商/Manufacturer	型号/Type		规格/Specification		数量/Number	物料编号/Material number		备注/Remark			
1	Q1	主电源开关/Main power switch		EATON	P1-25/EA/SVB		25A		1	YE10125250000					
2	Q2 Q4	断路器/Circuit breaker		TECO	BM-63C/3016S		16A		2	YE40301603000					
3		励磁脱扣器/Excitation release		YIJIN	MX		24V 50/60Hz		1	YE40024000000					
4	Q3	断路器/Circuit breaker		TECO	BM-63C/3006S		6A		1	YE40300603000					
5	Q5	断路器/Circuit breaker		TECO	BM-63C/2003S 3A 2P		3A		1	YE40200203000					
6	Q6	断路器/Circuit breaker		TECO	BM-63C/1003S 3A 1P		3A		1	YE40100203000					
7	K1	交流接触器/AC contactor		SIEMENS	3RT6015-1AB01		24V 50/60Hz		1	YE00601502500					
8		辅助触点 Auxiliary contactor		SIEMENS	3RH6911		1AA10		1	YE00691110000					
9	K2	交流接触器/AC contactor		SIEMENS	3RT6017-1AB01		24V 50/60Hz		1	YE00601702500					
10	K3	交流接触器/AC contactor		SIEMENS	3RT6018-1AB01		24V 50/60Hz		1	YE00601802500					
11	K4	中间继电器/Relay		Honeywell	GR-2C-AC24V		底座 base PGR-2C-E		1	YE03022400300					
12	T	变压器/Transformer		JIUXIN	IN=230V/200V OUT=24V		180VA		1	YE70023005400					
13	A1	微电脑控制板-微电脑显示屏 Microprocessor control board+Microprocessor displayer		PUMP	K SF878500B		AC24V		1	YE81878500300					
14	H1	三色警报灯+蜂鸣器 Three-color alarm lamp+ buzzer		SHINI	优先级 Priority		24V 50/60Hz		1	BL90002401520		(1)			
15	S3	露点变送器/Dew-point transducer		VAISALA	DMT141		POWER=24VDC OUT=4-20mA		1	YE90014100100		(1)(2)			
16	S6	通信接口板RS-485(双Dsub-9pin接头) Communication interface board RS-485 (double Dsub-9pin connector)		YUYUN	----		----		1	YE90048501200					
17		外壳RS485(SAL-7000-A-19)0版 Shell RS485(SAL-7000-A-19)0		BINCHENG	----		----		1	YR40048500000					
18	X1 X2 X3	端子排/Terminal board		HONEYWELL	SK4		4mm <sup>2</sup>		16	YE60000403200					
19		端子排/Terminal board		HONEYWELL	GK5PE		4mm <sup>2</sup> PE		4	YE60000403500					
20		端子排/Terminal board		HONEYWELL	SK2.5		2.5mm <sup>2</sup>		22	YE60002503200					
21		端子排/Terminal board		HONEYWELL	GK2.5PE		2.5mm <sup>2</sup> PE		2	YE60002503400					
22		端子排/Terminal board		HONEYWELL	SK2.5		2.5mm <sup>2</sup>		2	YE60002503200		(3)			
23		终端固定件E/GK系列 Terminal fittings E/GK series		HONEYWELL	E		GK		5	YE60000003900					
24	X4 X5	重载接头/Heavy Duty Connector		HARTING	4P+PE(母座 Female)Han 4A-F		4P		2	YE68000401400		(1)			
25	S4	温度保护器/Overheat protector		EGO	----		115-320°		1	----		(1)			
机型版本 Ver.E		注: (1)表示非电控箱内材料 (2)表示选配露点计 (3)表示选配无热再生装置-HD Notes: (1)Means it's not the material inside the control box. (2)Means accessories for Dew-point transducer. (3)Means optional heatless regen. device-HD.													
				制图		版号 H		标题 SDL-120U		图号		比例		第 5 张	
				设计		核 准		电气元件明细表一		SDL-120U-CE-230V-H-5		标准 CE		共 6 张	
				校对				 <b>信易電熱機械股份有限公司</b> <b>Shini Plastics Technologies, Inc.</b>		机器电压		3Φ230V			
标记		更改前		更改后		更改人				日期		20230615		机器频率	
1		2		3		4		5		6		7		8	





机型版本 Ver.D

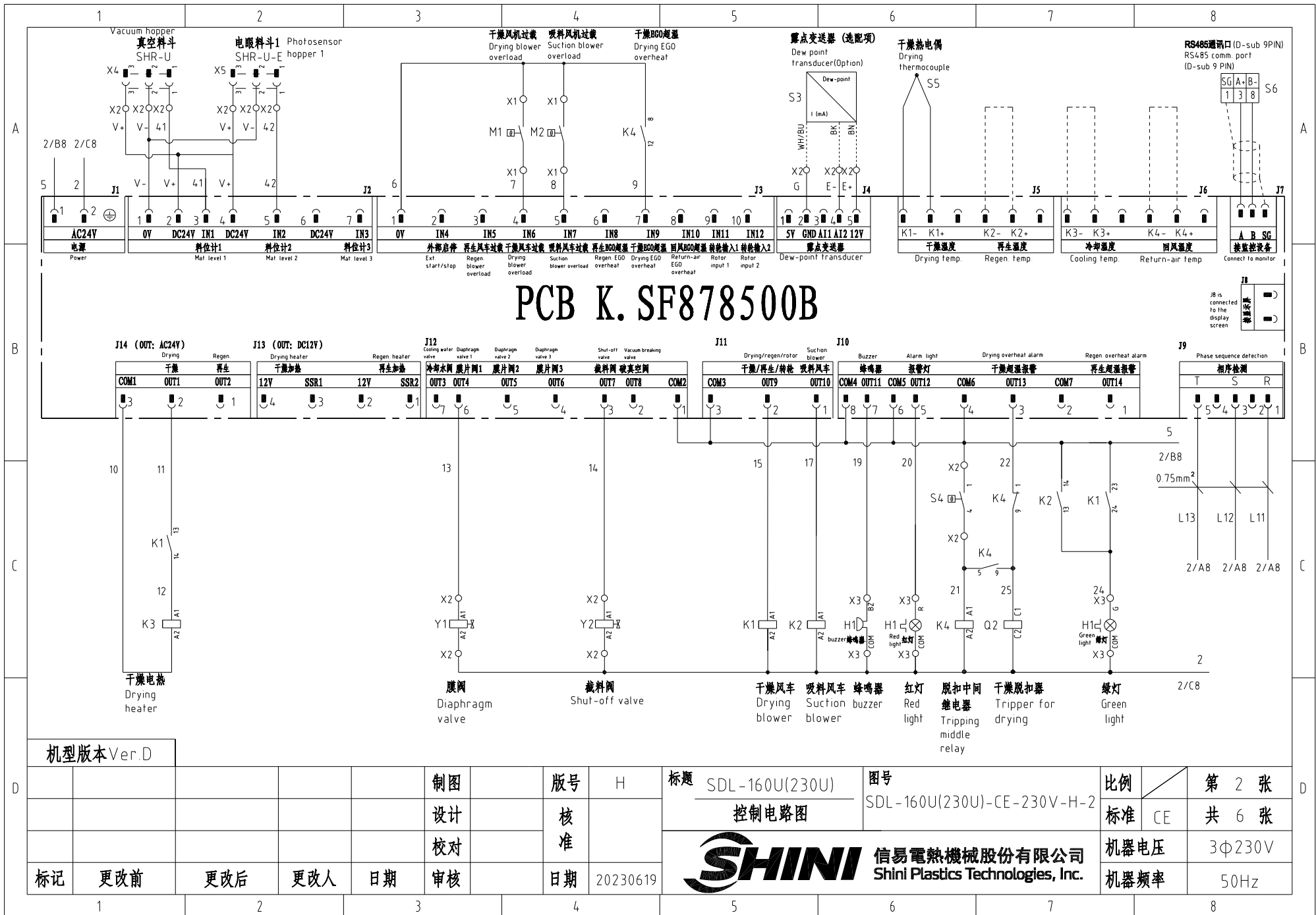
制图	版号	H
设计	核准	
校对	核准	
标记	更改前	更改后
	更改人	日期
日期	20230619	

标题 SDL-160U(230V)  
主电路图

图号 SDL-160U(230V)-CE-230V-H-1

**SHINI** 信易电热机械股份有限公司  
Shini Plastics Technologies, Inc.

比例	第 1 张
标准 CE	共 6 张
机器电压	3Φ230V
机器频率	50Hz



# PCB K. SF878500B

机型版本 Ver.D

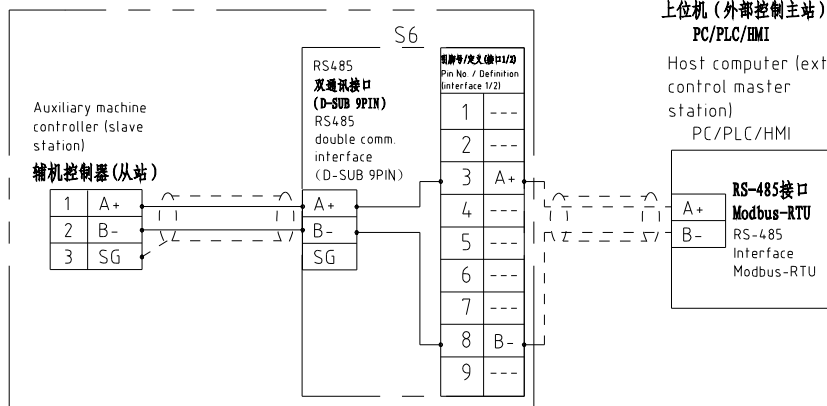
						制图	版本号	H	标题	SDL-160U(230U)	图号	SDL-160U(230U)-CE-230V-H-2	比例	第 2 张	
						设计	核准			控制电路图			标准	CE	共 6 张
						校对	核准						机器电压	3φ230V	
标记	更改前	更改后	更改人	日期	审核	日期	20230619						机器频率	50Hz	



## 信易辅机RS-485通讯接线示意图

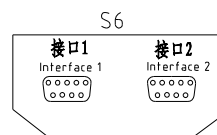
Shini auxiliary machine RS-485 comm. wiring diagram

信易辅机(从站) Shini auxiliary machine (slave station)



## 信易RS-485接口定义

Shini RS-485 interface definition



D-sub-9针接口 D-sub-9 pin interface	引脚号 Pin No.	引脚定义 Pin definition
	1	-
	2	-
	3	A+ (RS-485 信号) A+ (RS-485 signal)
	4	-
	5	-
	6	-
	7	-
	8	B- (RS-485 信号) B- (RS-485 signal)
	9	-

注: 1. 通讯接口: RS-485 (两线式)

2. 通讯协议: Modbus-RTU

3. 机器配备D-sub9针接头, 接口1和接口2内部并联, 功能相同, 不分主次;

Note:

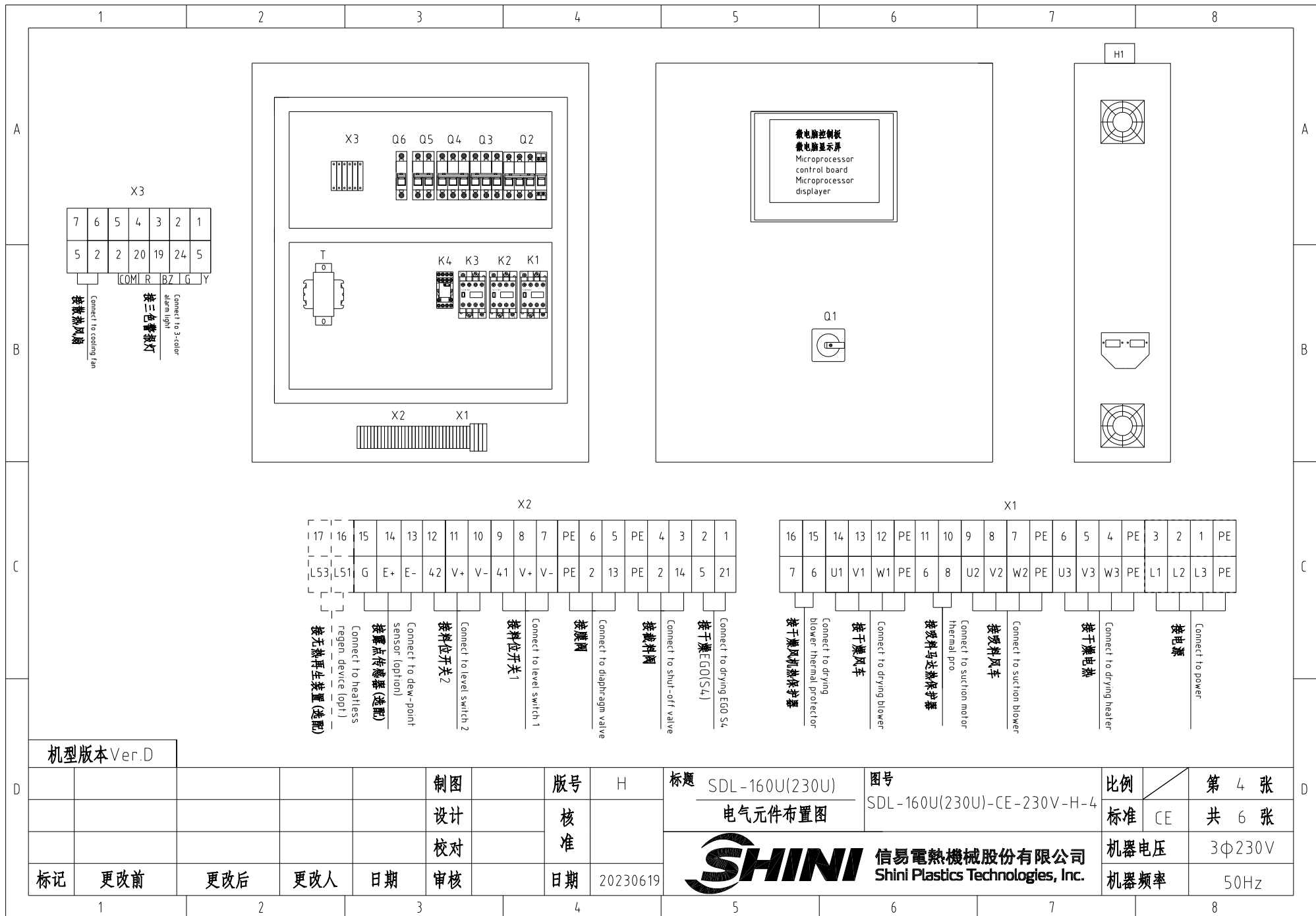
1. Comm. interface: RS-485 (two wire)

2. Comm. protocol: Modbus-RTU

3. The machine is equipped with D-sub9 female connector, interface 1 and interface 2 are connected in parallel and have the same function, regardless of primary and secondary.

机型版本 Ver.D

					制图		版号	H	标题	SDL-160U(230U)	图号	比例	第 3 张
					设计		核		通讯接口接线图	SDL-160U(230U)-CE-230V-H-3	标准	CE	共 6 张
					校对		准		信易电热机械股份有限公司 Shini Plastics Technologies, Inc.		机器电压	3φ230V	
标记	更改前	更改后	更改人	日期	审核	日期	20230619			机器频率	50Hz		



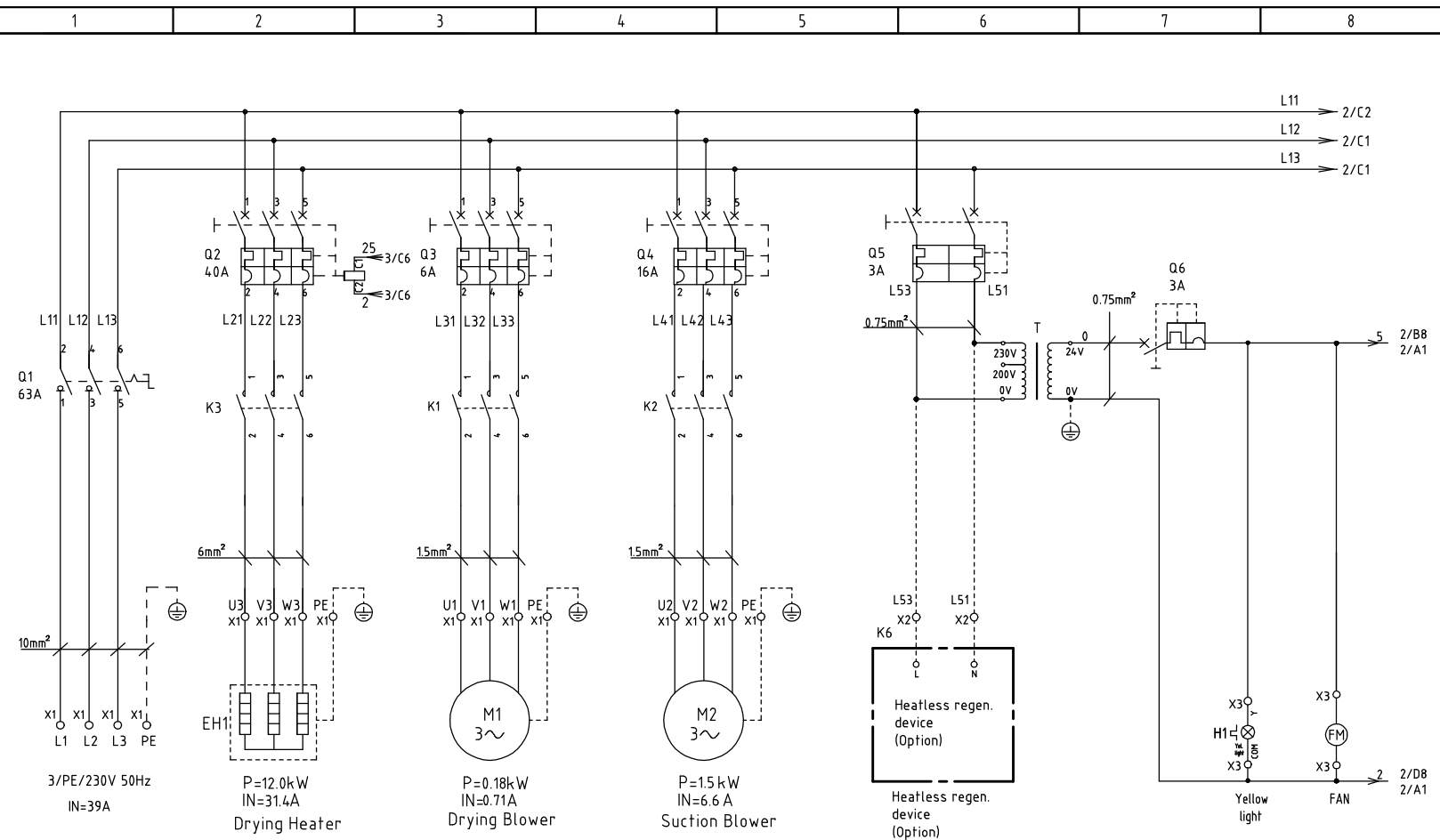
机型版本 Ver.D

标记	更改前	更改后	更改人	日期	制图	版号	H	标题	SDL-160U(230U)	图号	SDL-160U(230U)-CE-230V-H-4	比例	第 4 张
					设计	核准		电气元件布置图		标准	CE	共 6 张	
					校对			<b>信易电热机械股份有限公司</b> <b>Shini Plastics Technologies, Inc.</b>	机器电压	3Φ230V			
					审核	日期	20230619		机器频率	50Hz			


1		2		3		4		5		6		7		8	
序号/NO.	符号/Symbol	名称/Name	制造商/Manufacturer	型号/Type	规格/Specification	数量/Number	物料编号/Material number	备注/Remark							
1	Q1	主电源开关/Main power switch	EATON	P1-32/EA/SVB	32A	1	YE10323200000								
2	Q2	断路器/Circuit breaker	TECO	BM-63C/3020S	20A	1	YE40302003000								
3		励磁脱扣器/Excitation release	YIJIN	MX	24V 50/60Hz	1	YE40024000000								
4	Q3	断路器/Circuit breaker	TECO	BM-63C/3006S	6A	1	YE40300603000								
5	Q4	断路器/Circuit breaker	TECO	BM-63C/3016S	16A	1	YE40301603000								
6	Q5	断路器/Circuit breaker	TECO	BM-63C/2003S 3A 2P	3A	1	YE40200203000								
7	Q6	断路器/Circuit breaker	TECO	BM-63C/1003S 3A 1P	3A	1	YE40100203000								
8	K1	交流接触器/AC Contactor	SIEMENS	3RT6015-1AB01	24V 50/60Hz	1	YE00601502500								
9		辅助触点 Auxiliary contactor	SIEMENS	3RH6911	1AA10	1	YE00691100000								
10	K2	交流接触器/AC Contactor	SIEMENS	3RT6017-1AB01	24V 50/60Hz	1	YE00601702500								
11	K3	交流接触器/AC Contactor	SIEMENS	3RT6026-1AC20	24V 50/60Hz	1	YE00602602600								
12	K4	中间继电器/Middle relay	Honeywell	GR-2C-AC24V	底座 base PGR-2C-E	1	YE03022400300								
13	T	变压器/Transformer	JIUXIN	IN=230V/200V OUT=24V	180VA	1	YE70023005400								
14	PCB	微电脑控制板-微电脑显示屏 Microprocessor control board+Microprocessor displayer	PUMP	K.SF878500B	AC24V	1	YE81878500300								
15	H1	三色警报灯+蜂鸣器 Three-color alarm lamp+ buzzer	SHINI	优先级 Priority	24V 50/60Hz	1	BL90002401520	(1)							
16	S3	露点变送器/Dew-point transducer	VAISALA	DMT141	POWER=24VDC OUT=4-20mA	1	YE90014100100	(1)(2)							
17	S6	通信接口板RS-485(双Dsub-9pin接头) Communication interface board RS-485 (double Dsub-9pin connector)	YUYUN	----	----	1	YE90048501200								
18		外壳RS485(SAL-7000-A-19)0版 Shell RS485(SAL-7000-A-19)0	BINCHENG	----	----	1	YR40048500000								
19	X1 X2 X3	端子排/Terminal board	HONEYWELL	SK4	4mm <sup>2</sup>	16	YE60000403200								
20		端子排/Terminal board	HONEYWELL	GK5PE	4mm <sup>2</sup> PE	4	YE60000403500								
21		端子排/Terminal board	HONEYWELL	SK2.5	2.5mm <sup>2</sup>	22	YE60002503200								
22		端子排/Terminal board	HONEYWELL	GK2.5PE	2.5mm <sup>2</sup> PE	2	YE60002503400								
23		端子排/Terminal board	HONEYWELL	SK2.5	2.5mm <sup>2</sup>	2	YE60002503200	(3)							
24		终端固定件E/GK系列 Terminal fittings E/GK series	HONEYWELL	E	GK	5	YE60000003900								
25	X4 X5	重载接头/Heavy Duty Connector	HARTING	4P+PE(母座 Female)Han 4A-F	4P	2	YE68000401400	(1)							
机型版本 Ver.D		注: (1)表示非电控箱内材料 (2)表示选配露点计 (3)表示选配无热再生装置-HD Notes: (1)Means it's not the material inside the control box. (2)Means accessories for Dew-point transducer. (3)Means optional heatless regen. device-HD.													
				制图			版本号	H	标题		图号		比例	第 5 张	
				设计			核		SDL-160U(230U)		SDL-160U(230U)-CE-230V-H-5		标准	CE	共 6 张
				校对			准		电气元件明细表一		SHINI 信易電熱機械股份有限公司 Shini Plastics Technologies, Inc.		机器电压	3φ230V	
标记	更改前	更改后	更改人	日期	审核	日期	20230619					机器频率	50Hz		
1		2		3		4		5		6		7		8	



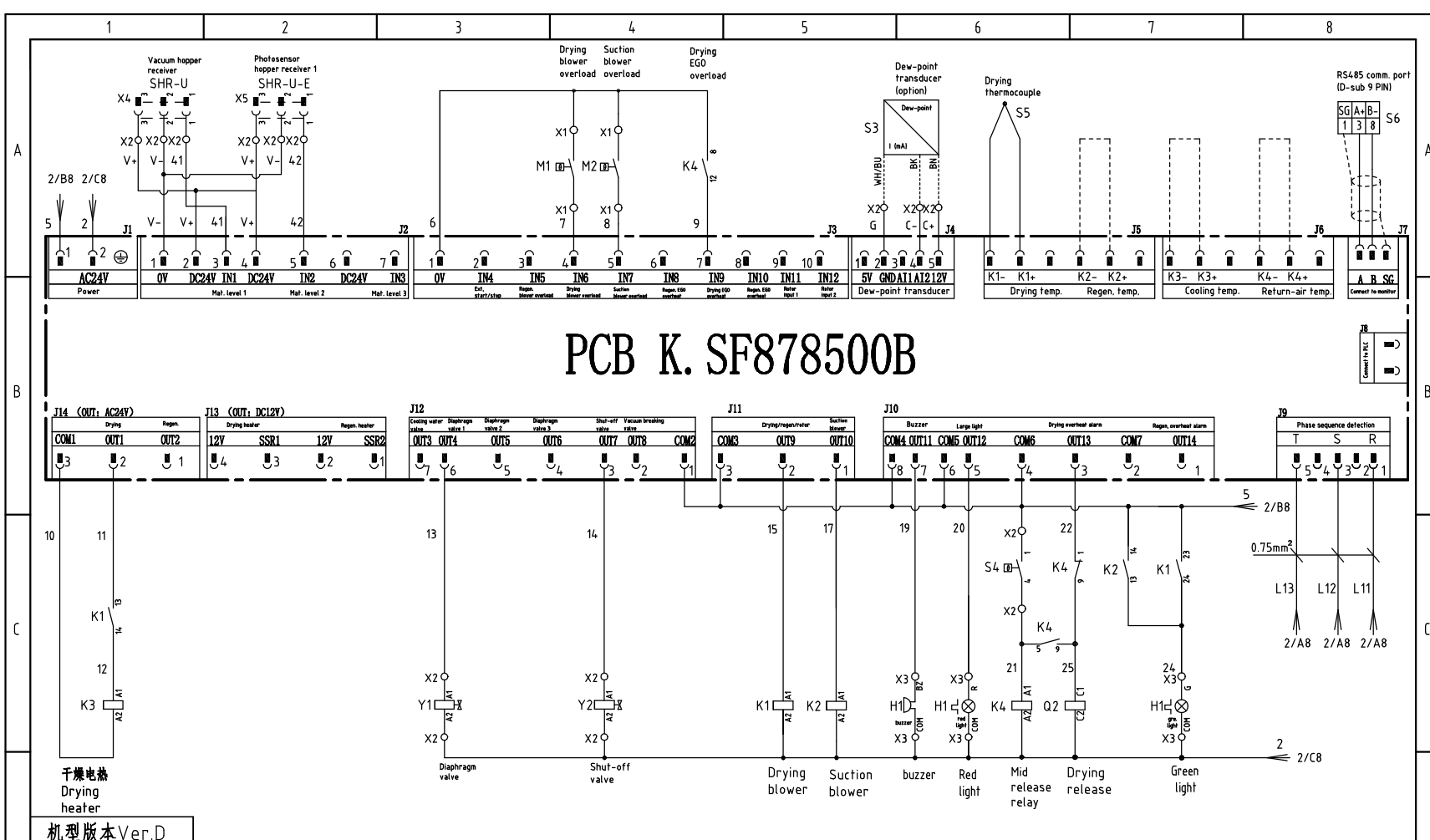




机型版本 Ver.D

				Drawer	Version	G	Title	SDL-300U(450U)	Drawing NO.	Scale	Page	1
				Designer	Approved by		Main Circuit Diagram	SDL-300U(450U)-CE-230V-G-1	Standard	CE	Totally	5 Pages
				Proofread by	Date	20210515	 <b>信易電熱機械股份有限公司</b> <b>Shini Plastics Technologies, Inc.</b>		Voltage	3Φ230V		
Mark	Before modification	After modification	Modified by	Modify date	Checked by				Frequency	50Hz		


1 2 3 4 5 6 7 8

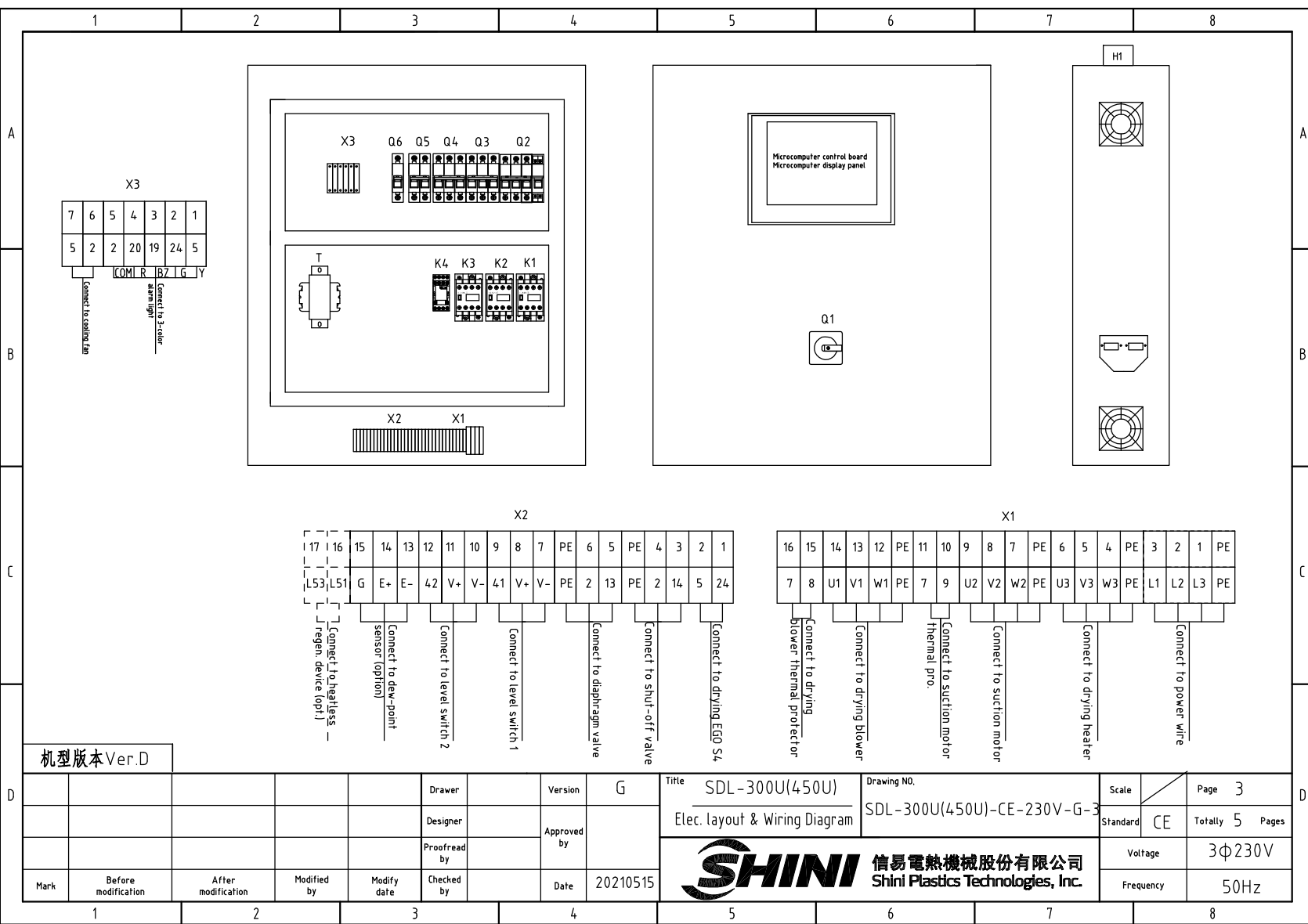


# PCB K. SF878500B

干燥电热  
Drying  
heater

机型版本 Ver.D

				Drawer		Version	G	Title	SDL-300U(450U)	Drawing NO.	Scale	Page	2
				Designer		Approved by		Control Circuit Diagram	SDL-300U(450U)-CE-230V-G-2	Standard	CE	Totally	5 Pages
				Proofread by		Date	20210515	 信易电热机械股份有限公司 Shini Plastics Technologies, Inc.	Voltage	3Φ230V			
				Checked by					Frequency	50Hz			



机型版本 Ver.D

				Drawer	Version	G	Title	SDL-300U(450U)	Drawing NO.	Scale	Page	3
				Designer	Approved by		Elec. layout & Wiring Diagram	SDL-300U(450U)-CE-230V-G-3	Standard	CE	Totally	5 Pages
				Proofread by	Date	20210515	信易電熱機械股份有限公司 Shini Plastics Technologies, Inc.		Voltage		3Φ230V	
Mark		Before modification	After modification	Modified by	Modify date	Checked by			Frequency		50Hz	

1		2		3		4		5		6		7		8	
NO.	Symbol	Name		Manufacturer		Type		Specification		Number	Material number		Remark		
A	1	Q1	Main power switch		EATON		P3-63/EA/SVB 63A		63A		1	YE10636300000			
	2	Q2	Circuit breaker		TECO		BM-63C/3040S/3P		40A		1	YE40304003000			
	3		Excitation release		YIJIN		MX		24V 50/60Hz		1	YE40024000000			
	4	Q3	Circuit breaker		TECO		BM-63C/3006S/3P		6A		1	YE40300603000			
	5	Q4	Circuit breaker		TECO		BM-63C/3016S/3P		16A		1	YE40301603000			
	6	Q5	Circuit breaker		TECO		BM-63C/2003S 3A 2P		3A		1	YE40200203000			
	7	Q6	Circuit breaker		TECO		BM-63C/1003S 3A 1P		3A		1	YE40100203000			
	8	K1	AC contactor		SIEMENS		3RT6015-1AB01		7A 24V 50/60Hz		1	YE00601502500			
	9		Auxiliary contactor		SIEMENS		3RH6911		1AA10		1	YE00691110000			
	10	K2	AC contactor		SIEMENS		3RT6017-1AB01		12A 24V 50/60Hz		1	YE00601702500			
	11	K3	AC contactor		SIEMENS		3RT6028-1AC20		38A 24V 50/60Hz		1	YE00602802600			
	12	K4	Middle relay		Honeywell		GR-2C-AC24V		base PGR-2C-E		1	YE03022400300			
	13	T	Transformer		JIUXIN		IN=230V/200V OUT=24V		180VA		1	YE70023005400			
	14	PCB	Microcomputer control panel+ microcomputer PLC/PCB		PUMP		K.SF878500B		AC24V		1	YE81878500300			
	15	H1	3-color alarm light + buzzer		SHINI		priority		24V 50/60Hz		1	BL90002401520		(1)	
	16	S3	Dew-point transducer		VAISALA		DMT141		POWER=24VDC OUT=4-20mA		1	YE90014.100100		(1)(2)	
	17	S4	Overheat protector		EGO		----		115-320°		1	----		(1)	
	18	S5	Thermocouple		SHINI		ST-K		K		1	----		(1)	
	19	S6	Comm. interface board RS-485 (double Dsub-9pin connector)		YUYUN		----		----		1	YE90048501200			
	20		Shell RS485(SAL-700G-A-19)ver.0		BINCHENG		----		----		1	YR40048500000			
	21	X1 X2 X3	Terminal board		HONEYWELL		SK10		10mm <sup>2</sup>		3	YE60001003200			
	22		Terminal board		HONEYWELL		GK10PE		10mm <sup>2</sup> PE		1	YE60001003500			
	23		Terminal board		HONEYWELL		SK6		6mm <sup>2</sup>		3	YE60000603200			
	24		Terminal board		HONEYWELL		GK6PE		6mm <sup>2</sup> PE		1	YE60000603500			
	25		Terminal board		HONEYWELL		SK4		4mm <sup>2</sup>		10	YE60000403200			

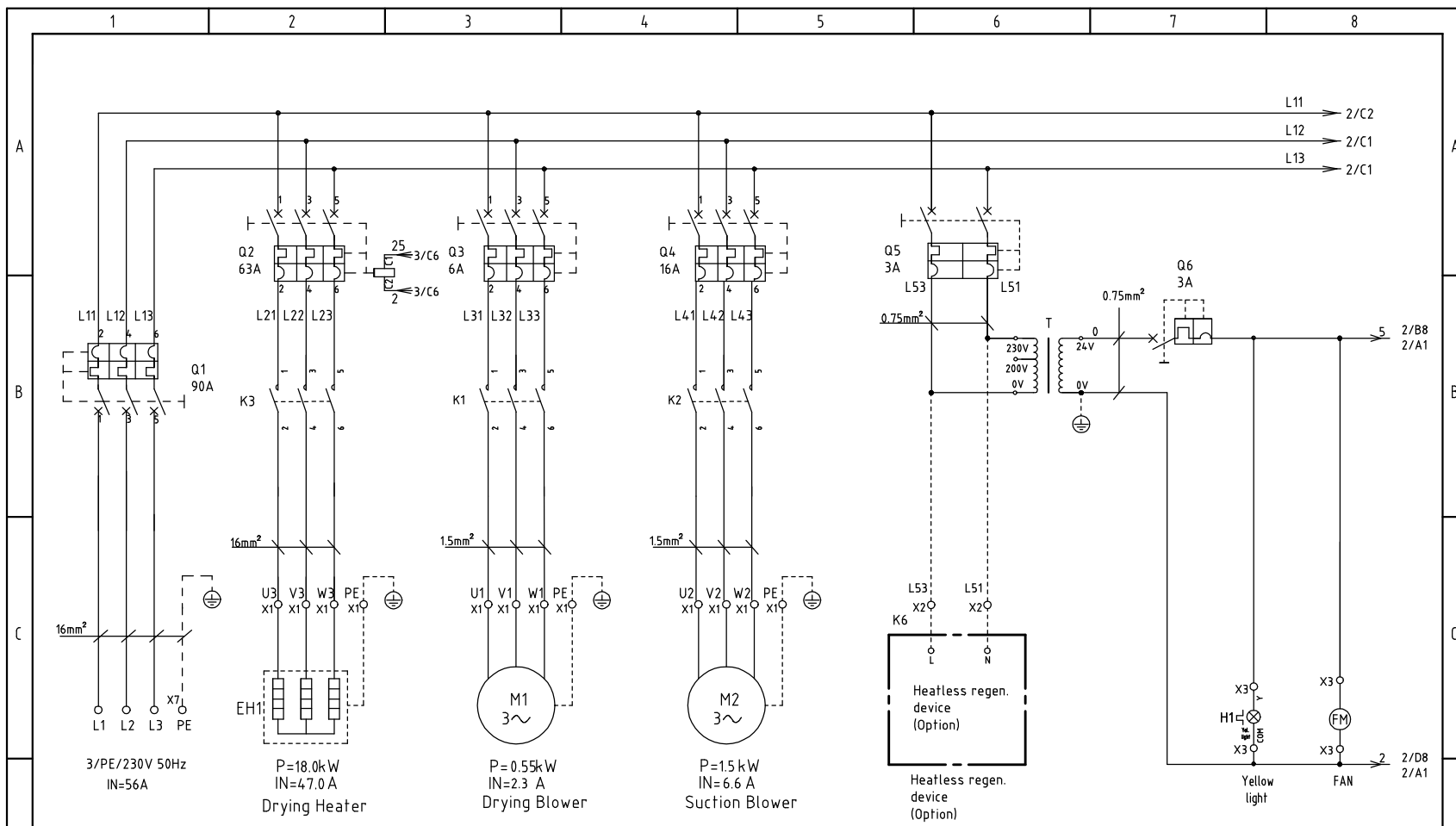
机型版本 Ver.D

Note: (1) Materials not in the control box; (2) Optional dew-point transducer; (3) Optional heatless regen. device -HD;

D	Mark	Before modification	After modification	Modified by	Modify date	Checked by	Date	20210515	Version	G	Title	SDL-300U(450U) Elec. Parts List 1	Drawing NO.	SDL-300U(450U)-CE-230V-G-4	Scale	Page 4
						Designer	Approved by						Standard	CE	Totally 5	Pages
						Proofread by								Voltage	3Φ230V	
														Frequency	50Hz	







机型版本 Ver.E

Mark	Before modification	After modification	Modified by	Modify date	Checked by	Date	20210425
Drawer					Version	G	
Designer					Approved by		
Proofread by							

Title	SDL-600U(750U)	Drawing NO.	SDL-600U(750U)-CE-230V-G-1
Main Circuit Diagram		Scale	Page 1
		Standard	CE
		Voltage	3φ230V
		Frequency	50Hz



D

D

1 2 3 4 5 6 7 8

A

A

B

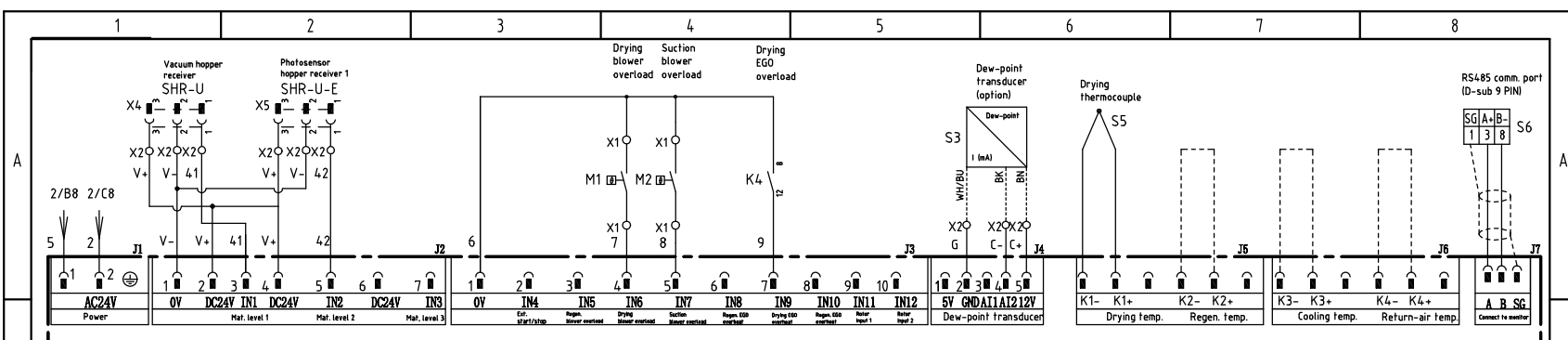
B

C

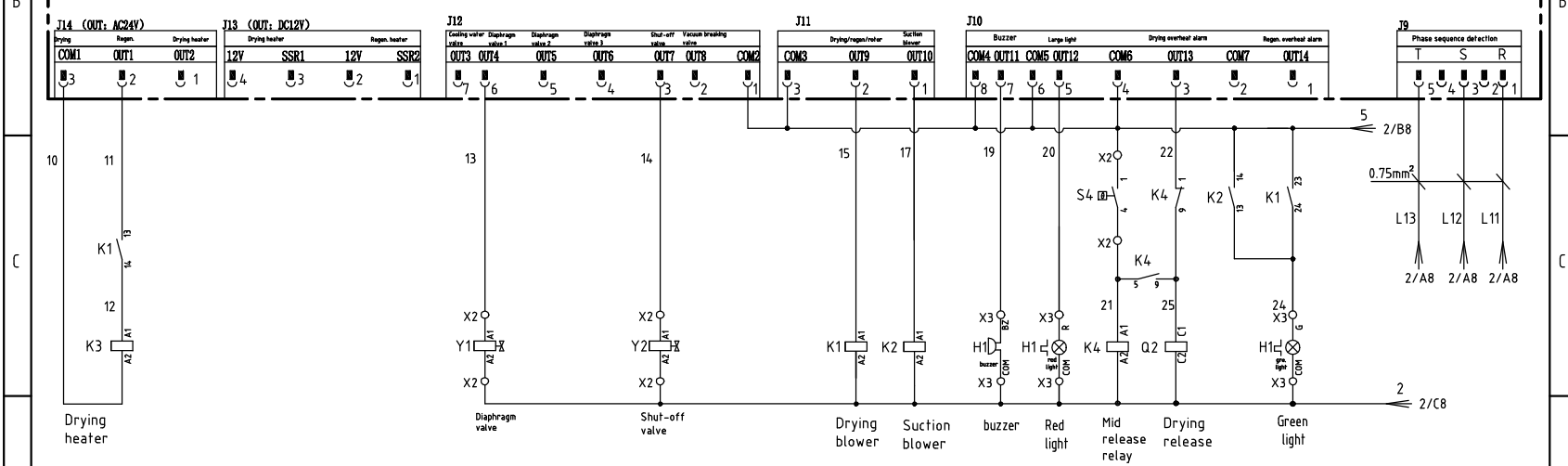
C

D


D



# PCB K. SF878500B



机型版本 Ver.E

				Drawer	Version	G	Title	SDL-600U(750U)	Drawing NO.	Scale	Page	2
				Designer	Approved by		Control Circuit Diagram	SDL-600U(750U)-CE-230V-G-2	Standard	CE	Totally	5 Pages
				Proofread by	Date	20210425	 信易電熱機械股份有限公司 Shini Plastics Technologies, Inc.		Voltage	3Φ230V		
Mark	Before modification	After modification	Modified by	Modify date	Checked by				Frequency	50Hz		

1 2 3 4 5 6 7 8

A

B

C

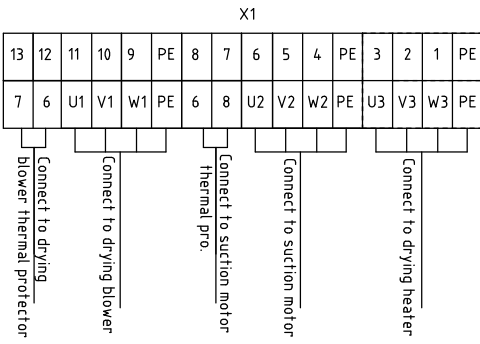
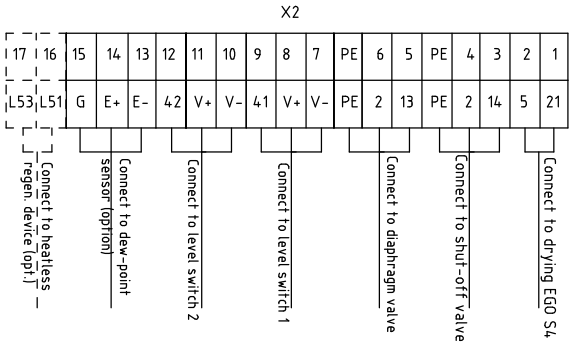
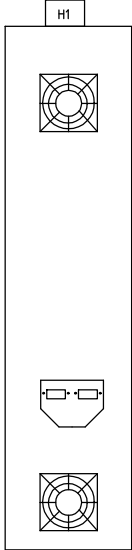
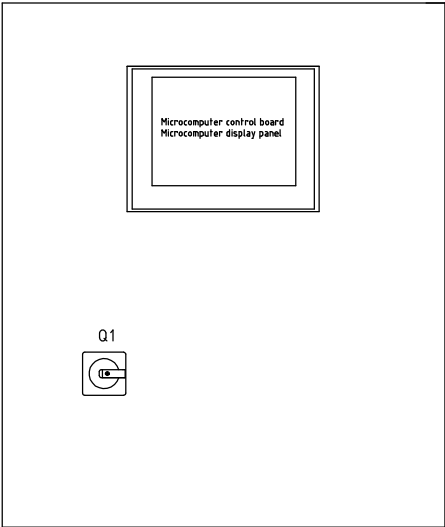
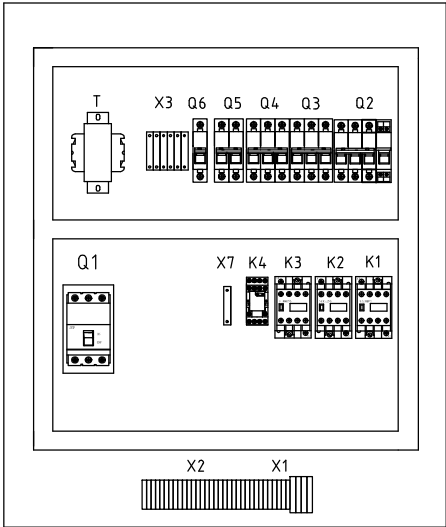
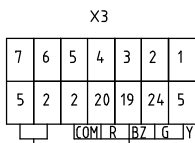
D

A

B

C

D



机型版本 Ver.E

Mark	Before modification	After modification	Modified by	Modify date	Checked by	Date	20210425
			Proofread by		Approved by		
			Designer		Version	G	
			Drawer		Title	SDL-600U(750U)	

Title: SDL-600U(750U)  
Elec. layout & Wiring Diagram

Drawing NO.: SDL-600U(750U)-CE-230V-G-3

Scale	Page 3
Standard	CE
Totally	5 Pages
Voltage	3φ230V
Frequency	50Hz



1 2 3 4 5 6 7 8

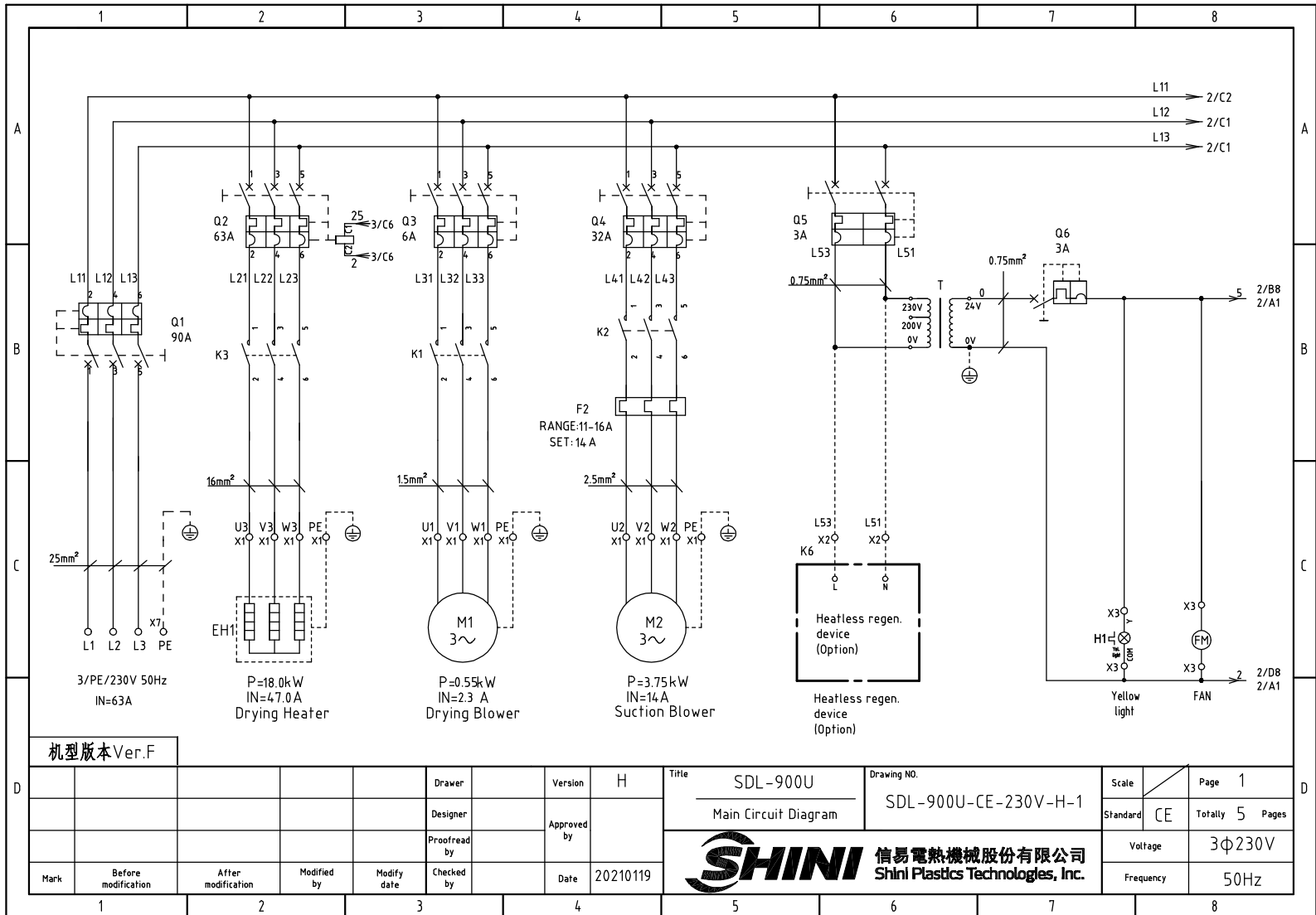


1		2		3		4		5		6		7		8					
N0.	Symbol	Name		Manufacturer		Type		Specification		Number	Material number		Remark						
A	1	Q1	Main power switch		ABB		A1A125TMF90/9003PFF		90A		1	YE41109200000							
	2	Q2	Circuit breaker		TECO		BM-63C/3063S/3P		63A		1	YE40306303000							
	3		Excitation release		YIJIN		MX		24V 50/60Hz		1	YE40024000000							
	4	Q3	Circuit breaker		TECO		BM-63C/3006S/3P		6A		1	YE40300603000							
	5	Q4	Circuit breaker		TECO		BM-63C/3016S/3P		16A		1	YE40301603000							
	6	Q5	Circuit breaker		TECO		BM-63C/2003S 3A 2P		3A		1	YE40200203000							
	7	Q6	Circuit breaker		TECO		BM-63C/1003S 3A 1P		3A		1	YE40100203000							
B	8	K1	AC contactor		SIEMENS		3RT6015-1AB01		7A 24V 50/60Hz		1	YE00601502500							
	9		Auxiliary contactor		SIEMENS		3RH6911		1AA10		1	YE00691110000							
	10	K2	AC contactor		SIEMENS		3RT6017-1AB01		12A 24V 50/60Hz		1	YE00601702500							
	11	K3	AC contactor		SIEMENS		3RT5044-1AC20		65A 24V 50/60Hz		1	YE00504402600							
	12	K4	Middle relay		Honeywell		GR-2C-AC24V		base PGR-2C-E		1	YE03022400300							
	13	T	Transformer		JIUXIN		IN=230V/200V OUT=24V		350VA		1	YE70023007000							
	14	PCB	Microcomputer control panel+ microcomputer PLC/PCB		PUMP		K.SF878500B		AC24V		1	YE81878500300							
C	15	H1	3-color alarm light + buzzer		SHINI		priority high grade		24V 50/60Hz		1	BL90242201520		(1)					
	16	S3	Dew-point transducer		VAISALA		DMT141		POWER=24VDC OUT=4-20mA		1	YE90014100100		(1)(2)					
	17	S4	Overheat protector		EGO		----		115-320°		1	----		(1)					
	18	S5	Thermocouple		SHINI		ST-K		K		1	----		(1)					
	19	S6	Comm. interface board RS-485 (double Dsub-9pin connector)		YUYUN		----		----		1	YE90048501200							
	20		Shell RS485(SAL-700G-A-19)ver.0		BINCHENG		----		----		1	YR40048500000							
	21	X1 X2 X3 X7	Terminal board		HONEYWELL		SK16		16mm <sup>2</sup>		3	YE60001603200							
D	22		Terminal board		HONEYWELL		GK16PE		16mm <sup>2</sup> PE		2	YE60001603500							
	23		Terminal board		HONEYWELL		SK4		4mm <sup>2</sup>		10	YE60000403200							
	24		Terminal board		HONEYWELL		GK5PE		4mm <sup>2</sup> PE		2	YE60000403500							
	25		Terminal board		HONEYWELL		SK2.5		2.5mm <sup>2</sup>		22	YE60002503200							
	机型版本 Ver.E		Note: (1) Materials not in the control box; (2) Optional dew-point transducer; (3) Optional heatless regen. device -HD;																
Mark	Before modification	After modification	Modified by	Modify date	Checked by	Date	20210425	Version	G	Title	SDL-600U(750U) Elec. Parts List 1		Drawing NO.	SDL-600U(750U)-CE-230V-G-4		Scale	Page	4	
					Designer	Approved by							Standard	CE	Totally	5	Pages		
					Proofread by										Voltage	3φ230V			
															Frequency	50Hz			
1		2		3		4		5		6		7		8					




信易電熱機械股份有限公司  
Shini Plastics Technologies, Inc.





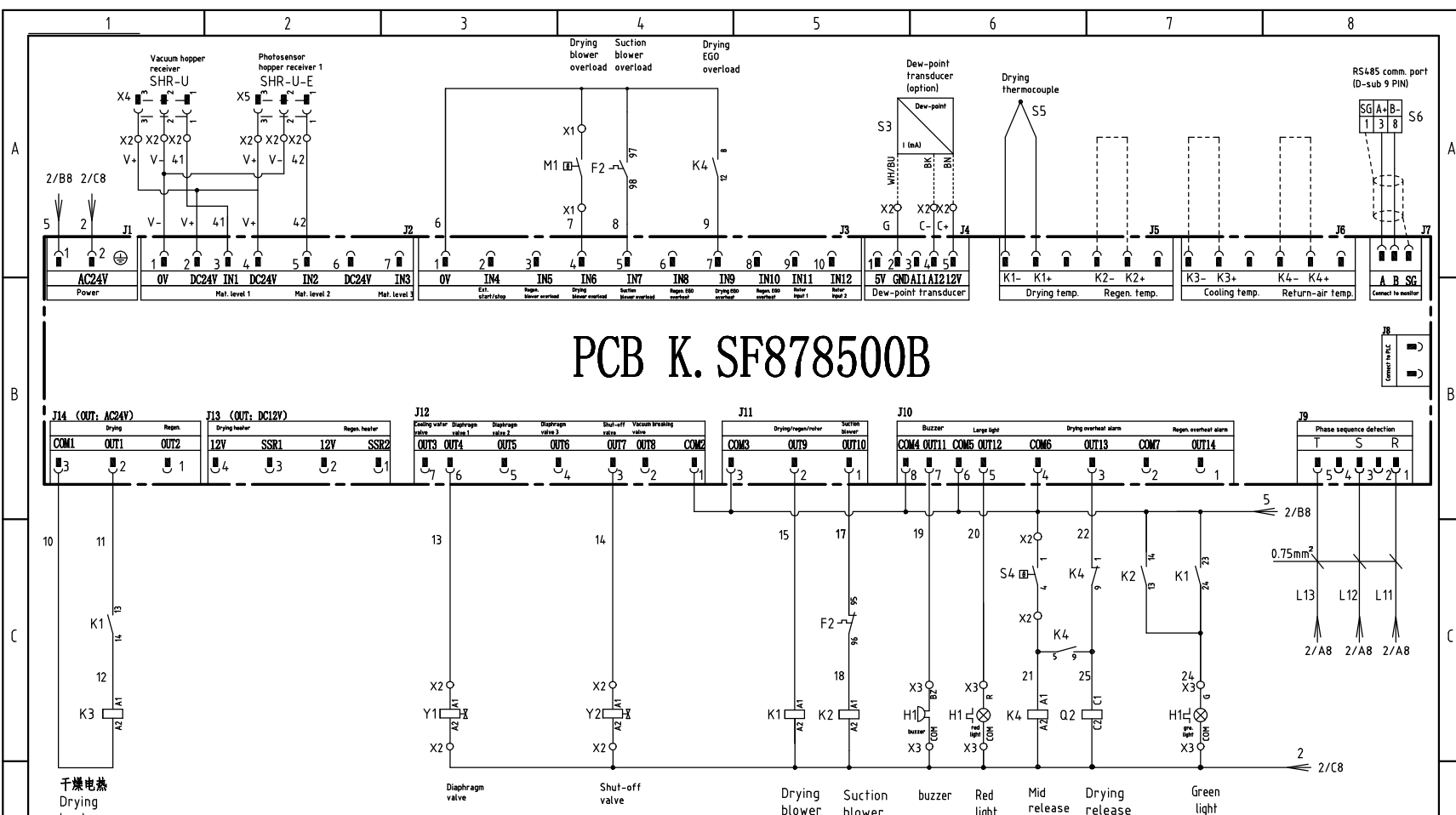
机型版本 Ver.F

Mark	Before modification	After modification	Modified by	Modify date	Checked by	Date	20210119
Drawer							
Version						H	
Designer							
Proofread by							
Approved by							

Title	SDL-900U	Drawing NO.	SDL-900U-CE-230V-H-1
Main Circuit Diagram			
 <b>信易電熱機械股份有限公司</b> <b>Shini Plastics Technologies, Inc.</b>			

Scale	Page 1
Standard	CE
Totally 5 Pages	
Voltage	3Φ230V
Frequency	50Hz

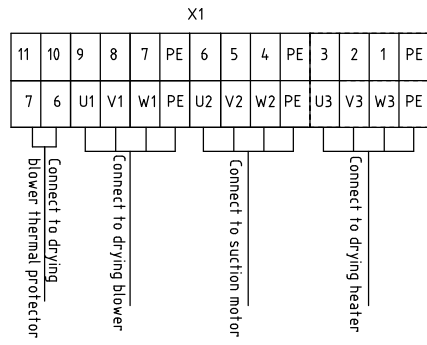
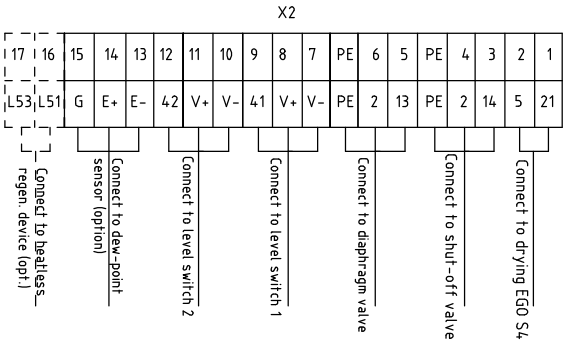
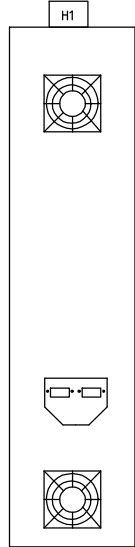
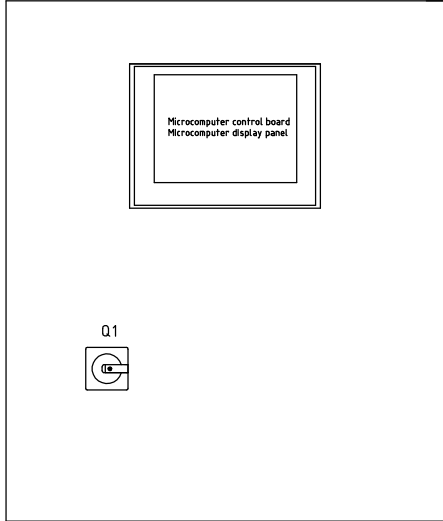
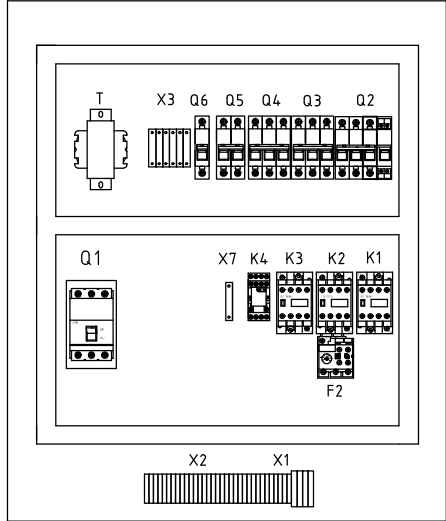
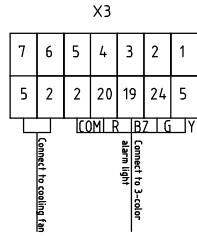
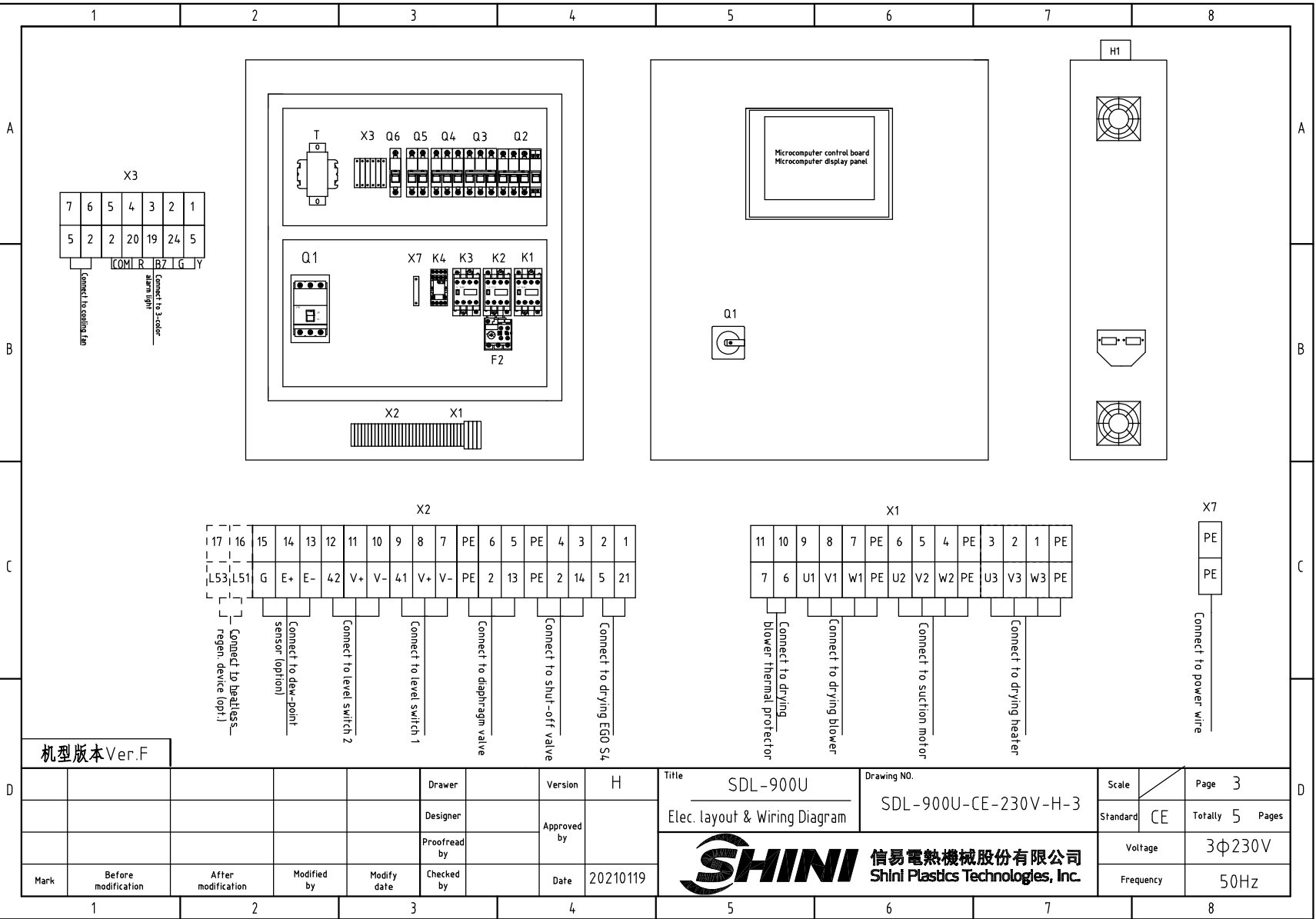
# PCB K. SF878500B



干燥电热  
Drying  
heater

机型版本 Ver.F

				Drawer	Version	H	Title	SDL-900U	Drawing NO.	Scale	Page 2
				Designer	Approved by		Control Circuit Diagram	SDL-900U-CE-230V-H-2	Standard	CE	Totally 5 Pages
				Proofread by	Checked by	Date	SHINI 信易電熱機械股份有限公司 Shini Plastics Technologies, Inc.		Voltage	3Φ230V	
Mark	Before modification	After modification	Modified by	Modify date	20210119				Frequency	50Hz	



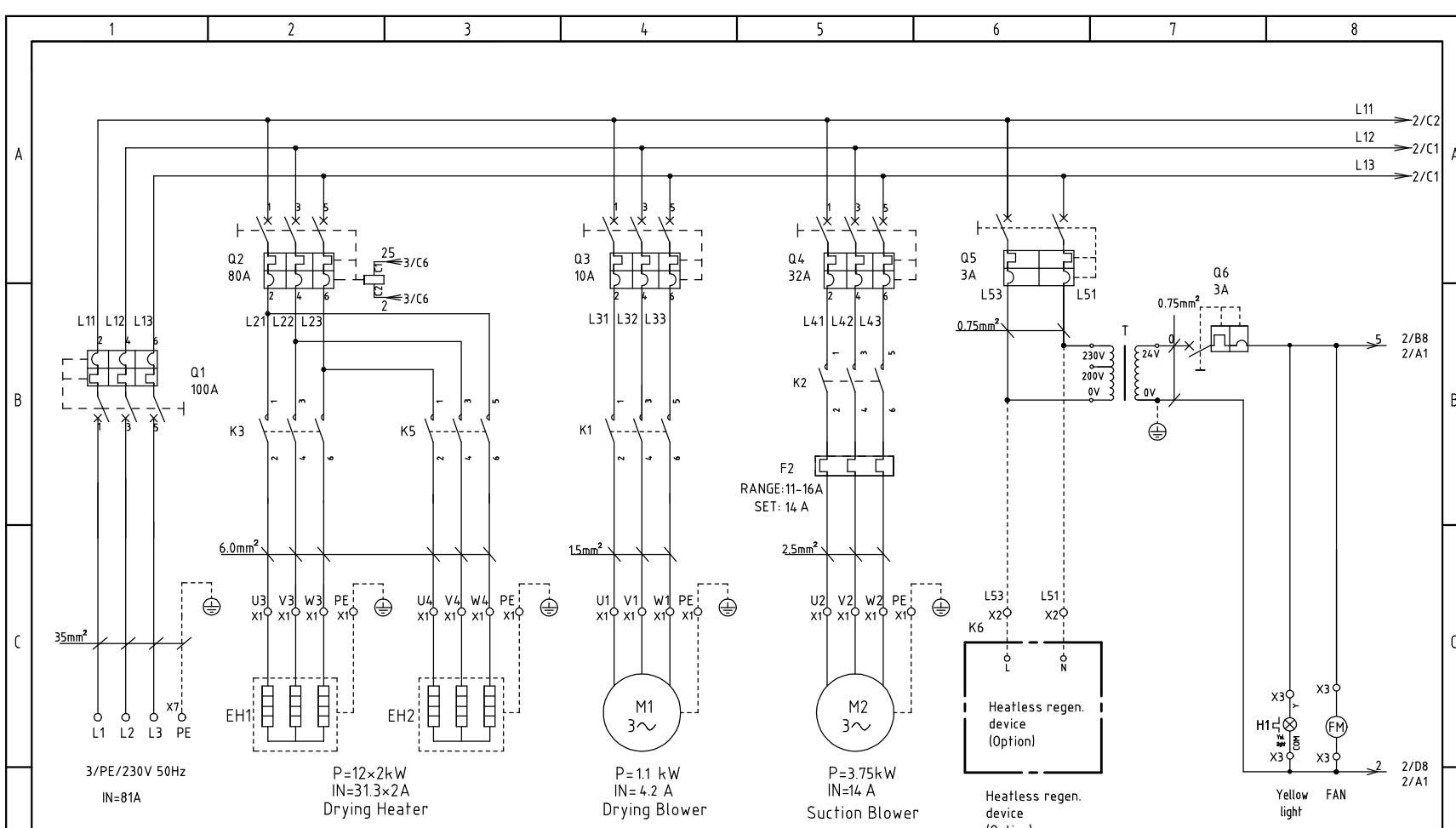
机型版本 Ver.F

Mark	Before modification	After modification	Modified by	Modify date	Checked by	Date	20210119
Drawer	Version	H	Designer	Approved by	Proofread by		

Title	SDL-900U	Drawing NO.	SDL-900U-CE-230V-H-3	Scale	Page 3
Elec. layout & Wiring Diagram			Standard	CE	Totally 5 Pages
 <b>信易電熱機械股份有限公司</b> <b>Shini Plastics Technologies, Inc.</b>			Voltage	3φ230V	
			Frequency	50Hz	

1		2		3		4		5		6		7		8				
NO.	Symbol	Name		Manufacturer		Type		Specification		Number	Material number		Remark					
1	Q1	Main power switch		ABB		A1A125TMF90/9003PFF		90A		1	YE41109200000							
2	Q2	Circuit breaker		TECO		BM-63C/3063S/3P		63A		1	YE40306303000							
3		Excitation release		YIJIN		MX		24V 50/60Hz		1	YE40024000000							
4	Q3	Circuit breaker		TECO		BM-63C/3006S/3P		6A		1	YE40300603000							
5	Q4	Circuit breaker		TECO		BM-63C/3032S/3P		32A		1	YE40303203000							
6	Q5	Circuit breaker		TECO		BM-63C/2003S 3A 2P		3A		1	YE40200203000							
7	Q6	Circuit breaker		TECO		BM-63C/1003S 3A 1P		3A		1	YE40100203000							
8	K1	AC contactor		SIEMENS		3RT6015-1AB01		7A 24V 50/60Hz		1	YE00601502500							
9		Auxiliary contactor		SIEMENS		3RH6911		1AA10		1	YE00691110000							
10	K2	AC contactor		SIEMENS		3RT6026-1AC20		25A 24V 50/60Hz		1	YE00602602600							
11	K3	AC contactor		SIEMENS		3RT5044-1AC20		65A 24V 50/60Hz		1	YE00504402600							
12	K4	Middle relay		Honeywell		GR-2C-AC24V		base PGR-2C-E		1	YE03022400300							
13	F2	Thermal overload relay		SIEMENS		3RU6126-4AB0		11-16A		1	YE01260110000							
14	T	Transformer		JIUXIN		IN=230V/200V OUT=24V		350VA		1	YE70023007000							
15	PCB	Microcomputer control panel+ microcomputer PLC/PCB		PUMP		K.SF878500B		AC24V		1	YE81878500300							
16	H1	3-color alarm light + buzzer(high)		SHINI		priority high grade		24V 50/60Hz		1	BL90242201520		(1)					
17	S3	Dew-point transducer		VAISALA		DMT141		POWER=24VDC OUT=4-20mA		1	YE90014100100		(1)(2)					
18	S4	Overheat protector		EGO		----		115-320°		1	----		(1)					
19	S5	Thermocouple		SHINI		ST-K		K		1	----		(1)					
20	S6	Comm. interface board RS-485 (double Dsub-9pin connector)		YUYUN		----		----		1	YE90048501200							
21		Shell RS485(SAL-700G-A-19)ver.0		BINCHENG		----		----		1	YR40048500000							
22	X1 X2 X3 X7	Terminal board		HONEYWELL		SK16		16mm <sup>2</sup>		3	YE60001603200							
23		Terminal board		HONEYWELL		GK16PE		16mm <sup>2</sup> PE		2	YE60001603500							
24		Terminal board		HONEYWELL		SK4		4mm <sup>2</sup>		10	YE60000403200							
25		Terminal board		HONEYWELL		GK5PE		4mm <sup>2</sup> PE		2	YE60000403500							
机型版本 Ver.F		Note: (1) Materials not in the control box; (2) Optional dew-point transducer; (3) Optional heatless regen. device -HD;																
D	Mark	Before modification	After modification	Modified by	Modify date	Checked by	Date	20210119	Drawer	Version	H	Title	SDL-900U	Drawing NO.	SDL-900U-CE-230V-H-4	Scale	Page	4
									Designer	Approved by		Elec. Parts List 1		Standard	CE	Totally	5	Pages
									Proofread by				信易電熱機械股份有限公司		Voltage	3Φ230V		
												Shini Plastics Technologies, Inc.		Frequency	50Hz			

1		2		3		4		5		6		7		8		
NO.	Symbol	Name		Manufacturer		Type		Specification		Number	Material number		Remark			
26		Terminal board		HONEYWELL		SK2.5		2.5mm <sup>2</sup>		22	YE60002503200					
27		Terminal board		HONEYWELL		GK2.5PE		2.5mm <sup>2</sup> PE		2	YE60002503400					
28		Terminal board		HONEYWELL		SK2.5		2.5mm <sup>2</sup>		2	YE60002503200		(3)			
29		Terminal fittings E/GK series		HONEYWELL		E		GK		5	YE60000003900					
30	X4 X5	Heavy duty connector		HARTING		4P*PE(socket)Han 4A-F		4P		2	YE68000401400		(1)			
31	FM	FAN		SUNON		DP-200A		24VAC 40W		1	----		(1)			
32	Y1,Y2	Solenoid valve		----		----		----		2	----		(1)			
33	M1	Blower		SHINI		----		----		1	----		(1)			
34	M2	Blower		SHINI		----		----		1	----		(1)			
35	EH	Pipe heater		SHINI		----		----		1	----		(1)			
机 型 版 本 Ver.F																
Note: (1) Materials not in the control box; (2) Optional dew-point transducer; (3) Optional heatless regen. device -HD;																
Mark		Before modification	After modification	Modified by	Modify date	Checked by	Date	20210119	<b>SHINI</b> 信易電熱機械股份有限公司 Shini Plastics Technologies, Inc.		Title: SDL-900U 电气元件明细表二		Drawing NO. SDL-900U-CE-230V-H-5		Scale: $\frac{\quad}{\quad}$ Standard: CE	Page 5 Totally 5 Pages
											Voltage: 3 $\phi$ 230V		Frequency: 50Hz			

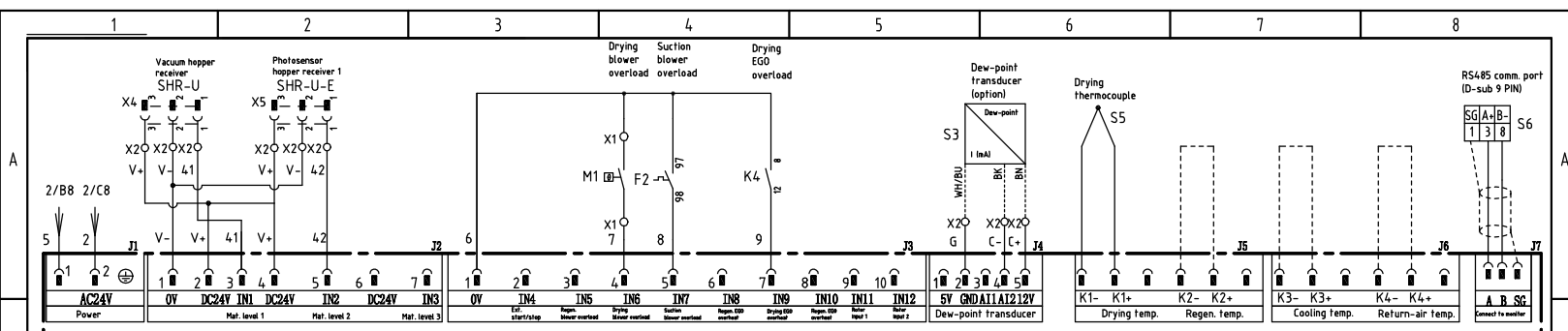


机型版本 Ver.F

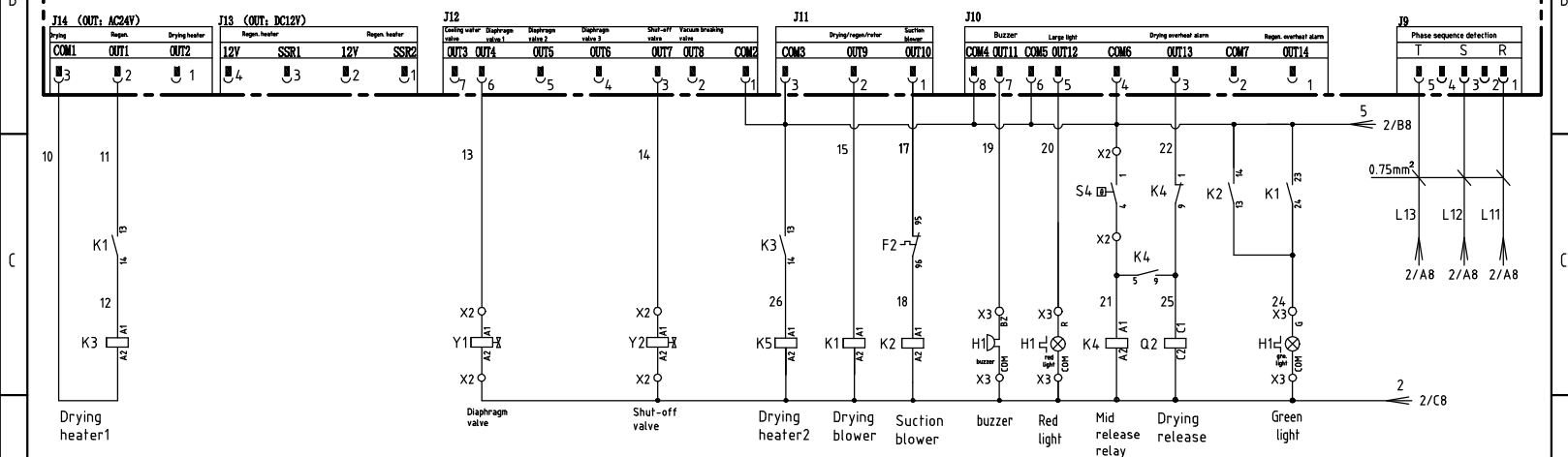
D					Drawer		Version	H	Title	SDL-1200U	Drawing NO.	SDL-1200U-CE-230V-H-1	Scale	Page 1
					Designer		Approved by		Main Circuit Diagram		Standard	CE	Totally 5 Pages	
					Proofread by		Date	20210119	信易電熱機械股份有限公司 Shini Plastics Technologies, Inc.		Volage	3Φ230V		
					Checked by					Frequency	50Hz			

1      2      3      4      5      6      7      8





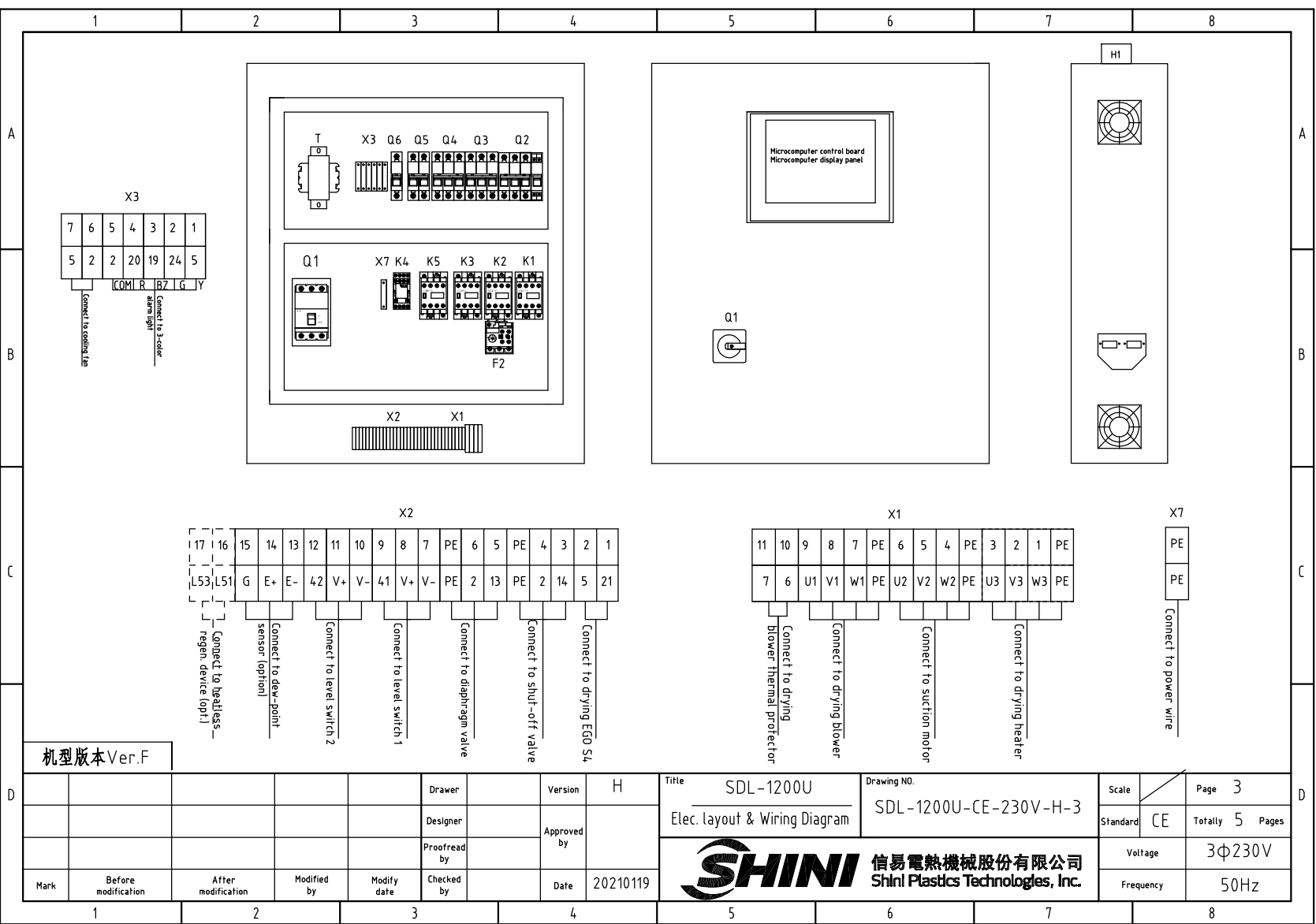
# PCB K. SF878500B



机型版本 Ver.F

Mark		Before modification	After modification	Modified by	Modify date	Checked by	Date	20210119	Version	H	Title	SDL-1200U Control Circuit Diagram	Drawing NO.	SDL-1200U-CE-230V-H-2	Scale	Page 2
									Designer	Approved by				Standard	CE	Totally 5 Pages
									Proofread by					Voltage	3Φ230V	
														Frequency	50Hz	





机型版本 Ver.F

Mark	Before modification	After modification	Modified by	Modify date	Checked by	Date	20210119
					Proofread by	Approved by	
					Designer	Version	H
					Drawer		

Title	SDL-1200U Elec. layout & Wiring Diagram	Drawing NO.	SDL-1200U-CE-230V-H-3
 <b>信易電熱機械股份有限公司</b> <b>Shini Plastics Technologies, Inc.</b>		Scale	Page 3
		Standard	CE Totally 5 Pages
		Voltage	3Φ230V
		Frequency	50Hz

1		2		3		4		5		6		7		8				
NO.	Symbol	Name		Manufacturer		Type		Specification		Number	Material number		Remark					
A	1	Q1	Breaker interlock		ABB		A1A125TMF100/10003PFF		100A	1	YE41110200000							
	2	Q2	Circuit breaker		TECO		BM-100D/3080S/3P		80A	1	YE40308003000							
	3		Excitation release		YIJIN		MX		24V 50/60Hz	1	YE40024000000							
	4	Q3	Circuit-breaker		TECO		BM-63C/3010S/3P		10A	1	YE40301003000							
	5	Q4	Circuit-breaker		TECO		BM-63C/3032S/3P		32A	1	YE40303203000							
	6	Q5	Circuit-breaker		TECO		BM-63C/2003S 3A 2P		3A	1	YE40200203000							
	7	Q6	Circuit-breaker		TECO		BM-63C/1003S 3A 1P		3A	1	YE40100203000							
B	8	K1	AC contactor		SIEMENS		3RT6016-1AB01		9A 24V 50/60Hz	1	YE00601602500							
	9		Auxiliary contactor		SIEMENS		3RH6911		1AA10	1	YE00691110000							
	10	K2	AC contactor		SIEMENS		3RT6026-1AC20		25A 24V 50/60Hz	1	YE00602602600							
	11	K3,K5	AC contactor		SIEMENS		3RT6028-1AC20		38A 24V 50/60Hz	2	YE00602802600							
	12	K4	Middle relay		Honeywell		GR-2C-AC24V		base PGR-2C-E	1	YE03022400300							
	13	F2	Thermal overload relay		SIEMENS		3RU6126-4AB0		11-16A	1	YE01260110000							
	14	T	Transformer		JIUXIN		IN=230V/200V OUT=24V		230VA	1	YE70023006100							
	15	PCB	Microcomputer control panel+ microcomputer PLC/PCB		PUMP		K.SF878500B		AC24V	1	YE81878500300							
C	16	H1	3-color alarm light + buzzer(high)		SHINI		priority high grade		24V 50/60Hz	1	BL90242201520		(1)					
	17	S3	Dew-point transducer		VAISALA		DMT141		POWER=24VDC OUT=4-20mA	1	YE90014100100		(1)(2)					
	18	S4	Overheat protector		EGO		----		115-320°	1	----		(1)					
	19	S5	Thermocouple		SHINI		ST-K		K	1	----		(1)					
	20	S6	Comm. interface board RS-485 (double Dsub-9pin connector)		YUYUN		----		----	1	YE90048501200							
	21		Shell RS485(SAL-700G-A-19)ver.0		BINCHENG		----		----	1	YR40048500000							
	22	X1 X2 X3 X7	Terminal board		HONEYWELL		SK6		6mm <sup>2</sup>	6	YE60000603200							
	23		Terminal board		HONEYWELL		GK6PE		6mm <sup>2</sup> PE	2	YE60000603500							
	24		Terminal board		HONEYWELL		SK4		4mm <sup>2</sup>	10	YE60000403200							
	25		Terminal board		HONEYWELL		GK5PE		4mm <sup>2</sup> PE	2	YE60000403500							
机型版本 Ver.F		Note: (1) Materials not in the control box; (2) Optional dew-point transducer; (3) Optional heatless regen. device -HD;																
D					Drawer		Version		H		Title		Drawing NO.		Scale		Page 4	
					Designer		Approved by				Elec. Parts List 1		SDL-1200U-CE-230V-H-4		Standard		CE	
					Proofread by		Date		20210119		 <b>信易電熱機械股份有限公司</b> <b>Shini Plastics Technologies, Inc.</b>		Voltage		3φ230V			
	Mark		Before modification		After modification		Modified by		Modify date				Checked by		Frequency		50Hz	
1		2		3		4		5		6		7		8				

