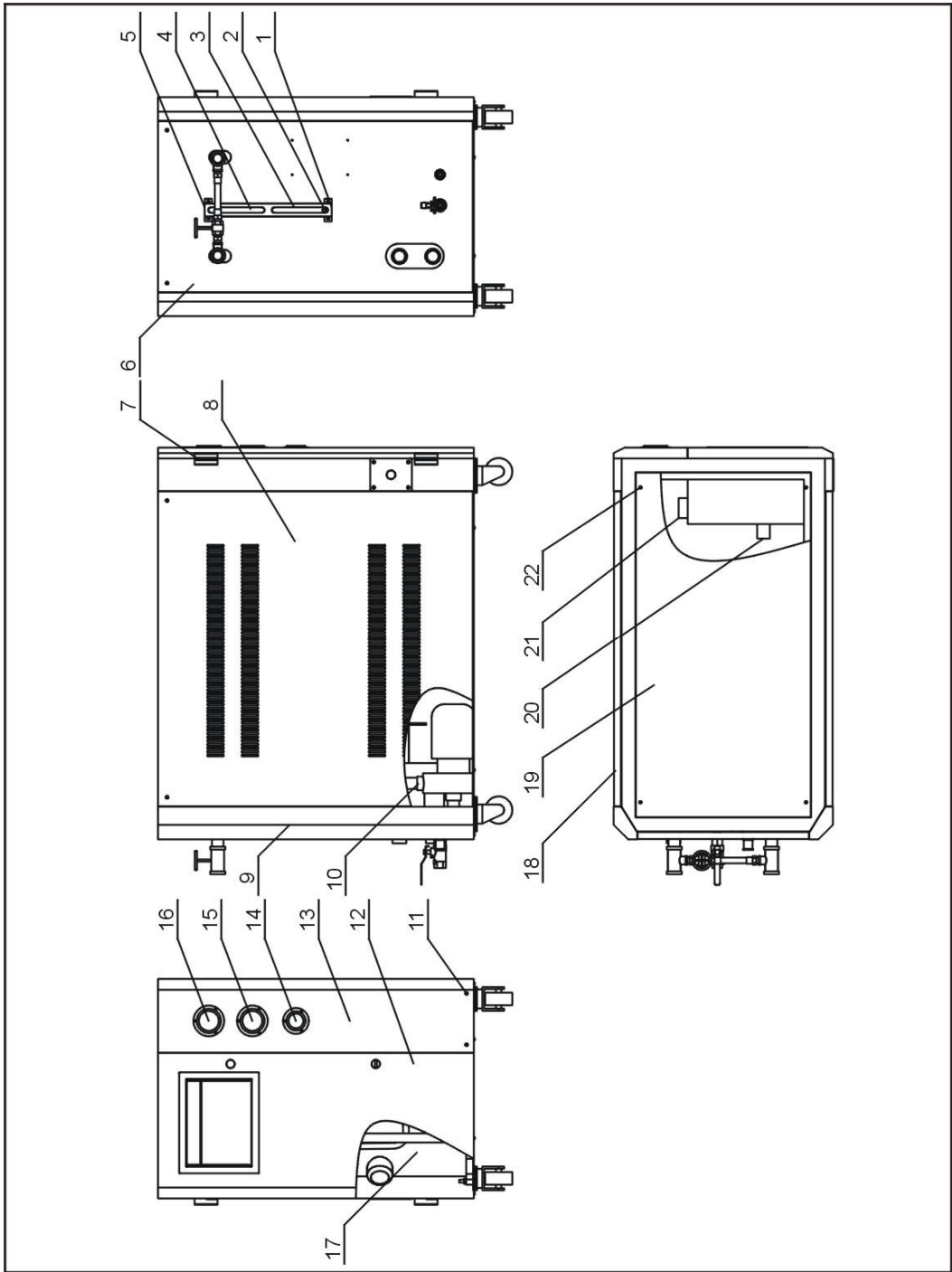


# 1. General Assembly Diagram (SIC-9W~14W-R2)



Note: For details of the numbers in the parts drawing, please refer to the part list in 2

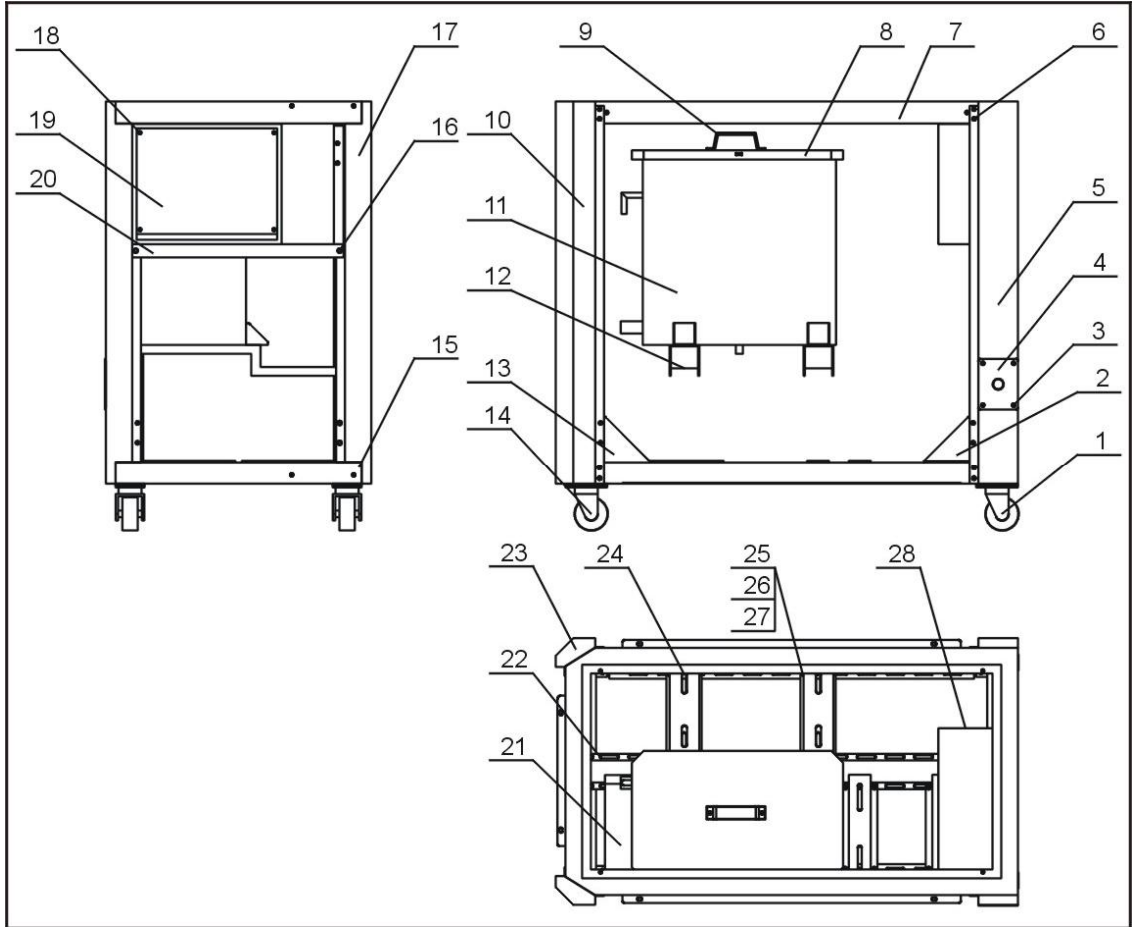
## 2. General Assembly Parts List (SIC-9W~14W-R2)

No.	Name	Parts No.
1	Level indicator base (Option)	YW20000000400
2	Level indicator screw (Option)	BH12060700110
3	Liquid level indicator(Option)	BH12030000010
4	Glass tube(Option)	YW70963000000
5	Liquid level indicator cover(Option)	BL90006800020
6	Rear plate	-
7	Hinge	YW06203100400
8	Side plate (left)	-
9	Rack	-
10	Water system	-
11	Cross socket head cap screw GB/T-818 M6×45 longzine	YW63064500000
12	Front door plate	-
13	Gauge plate	-
14	Water pressure gauge	YW85001000100
15	Low pressure gauge	YW85601800000
16	High pressure gauge	YW85603800000
17	Refrigerant system	-
18	Side plate (right)	-
19	Top plate	-
20	Anti-freeze switch	YW85071100000
21	High pressure switch	YE10254000300
	Low pressure switch	YE10050600300
22	Cross socket head cap screw GB/T-818 M6x30- longzine	YW63063000000

\* means possible broken parts. \*\* means easy broken parts. Spare backup is suggested.

Please confirm the version number of the manual before you order to ensure the stock number and the parts are consistent.

### 3. Rack Assembly (SIC-9W~14W-R2)



Note: For details of the numbers in the parts drawing, please refer to the part list in 4

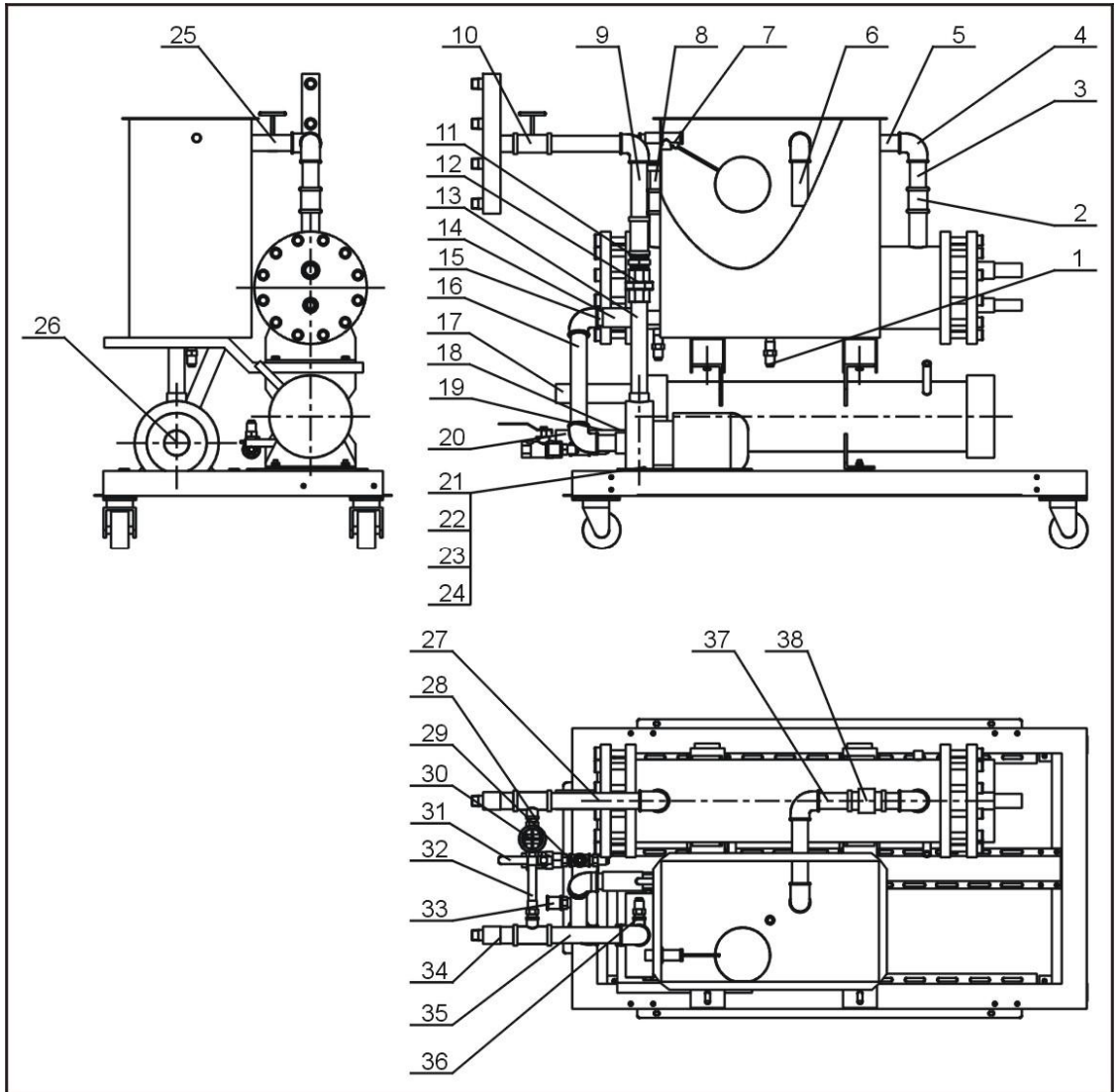
#### 4. Rack Parts List(SIC-9W~14W-R2)

No.	Name	Parts No.
1	Braking black castor 3"	YW03000300000
2	Triangle support (left)	-
3	Cross recessed raised countersunk head screw JIS1111 M6x10-longzine	YW62061000000
4	Line jig fixing plate	-
5	Left front stand column	-
6	Hexagon screw bolt GB/T5781 M6x20-4.8-longzine	YW60062000100
7	Upper-frame	-
8	Tank cover	-
9	Square handle	BW20012000040
10	Left back stand column	-
11	Tank body	-
12	Tank supporting	-
13	Triangle support (right)	-
14	Movable black caster 3"PP	YW03000300200
15	Base frame	-
16	External hexagonal screw M8x20-longzine 4.8	YW60082000300
17	Right front stand column	-
18	Cross recessed raised countersunk head screw JIS1111 M5x20-longzine	YW62052000000
19	Electric moubting plate	-
20	Electric contrl cabinet supporting	-
21	Pump supporting	-
22	Lower middle beam	-
23	Right back stand column	-
24	Lower beam	-
25	Hexagon nut GB/T6170 M6-longzine	YW64000600300
26	Standard spring washer GB/T93 6-longzine	YW65006000100
27	Flat gasket A GB/T97.1 6-longzine	YW66061300000
28	Electric control cabinet	-

\* means possible broken parts. \*\* means easy broken parts. Spare backup is suggested.

Please confirm the version number of the manual before you order to ensure the stock number and the parts are consistent.

### 5. Water System Diagram (SIC-9W~14W-R2)



Note: For details of the numbers in the parts drawing, please refer to the part list in 6

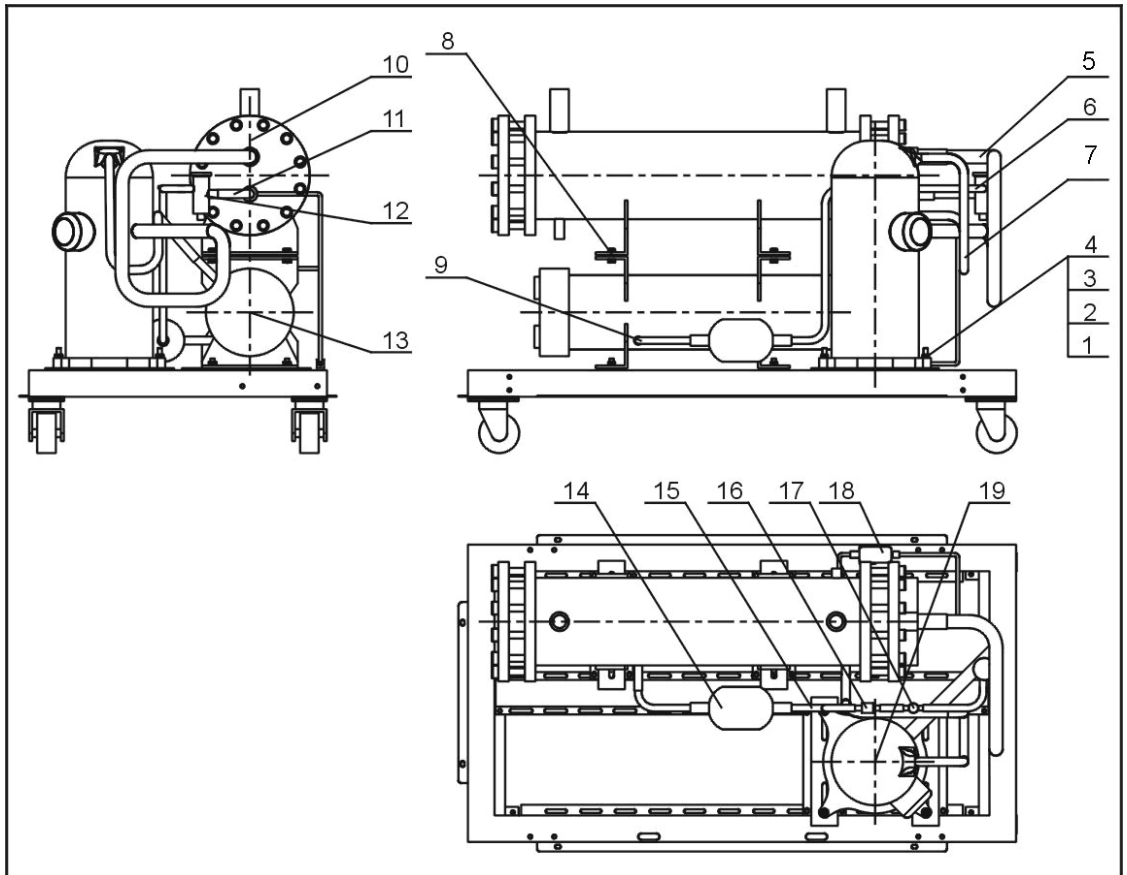
## 6. Water System Parts List (SIC-9W~14W-R2)

No.	Name	Parts No.
1	Copper inserted core 1/2"	BH12161200010
2	Direct connection1"	YW51000100000
3	Galvanized steel pipe 1	-
4	Pipe elbow 1"	YW53100000000
5	Galvanized steel pipe 2	-
6	Galvanized steel pipe 3	-
7	Floating ball valve 1/2"	YW59010200000
8	Galvanized steel pipe 4	-
9	Galvanized steel pipe 5	-
10	T connection1" ×1/2"	YW52101200100
11	Inner joint 1"	YW50000100000
12	Loose joint1"	YW54000100000
13	Galvanized steel pipe 7	-
14	Black rubber hose	YR60320500000
15	Galvanized steel pipe 8	-
16	Galvanized steel pipe 9	-
17	Galvanized steel pipe 10	-
18	Inner joint 1-1/2"	YW50001500100
19	T connection 1-1/2"×1/2"	YW52151200100
20	Galvanized steel pipe 13	-
21	Hexagon nut GB/T6170 M8-longzine	YW64080600000
22	Standard spring washer GB/T93 8-longzine	YW65008000100
23	Big gasket C GB/T968 (8.4x24x2) -longzine	YW66082200100
24	External hexagonal screw M8x20-longzine 4.8	YW60082000300
25	Galvanized steel pipe 11	-
26	Pump	-
27	Galvanized steel pipe 12	-
28	Copper pipe coupler 1/2"	BH12010200010
29	T connection1/2"	YW52100200000
30	Sluice valve1/2"	YW50010200000
31	Copper cored ball valve 1/2"	YW50010200100
32	Steel wire rubber hose 1/2"	YR60051000000
33	Direct connection1/2"	YW51001200000
34	Water manifold (Option)	-
35	Galvanized steel pipe 6	-
36	Copper pipe coupler 1/2"	BH12010400610
37	Galvanized steel pipe 7	-
38	Flow switch 1"(Option)	YW85005000000

\* means possible broken parts. \*\* means easy broken parts. Spare backup is suggested.

Please confirm the version number of the manual before you order to ensure the stock number and the parts are consistent.

## 7. Refrigerant System Diagram (SIC-9W~14W-R2)



Note: For details of the numbers in the parts drawing, please refer to the part list in 8

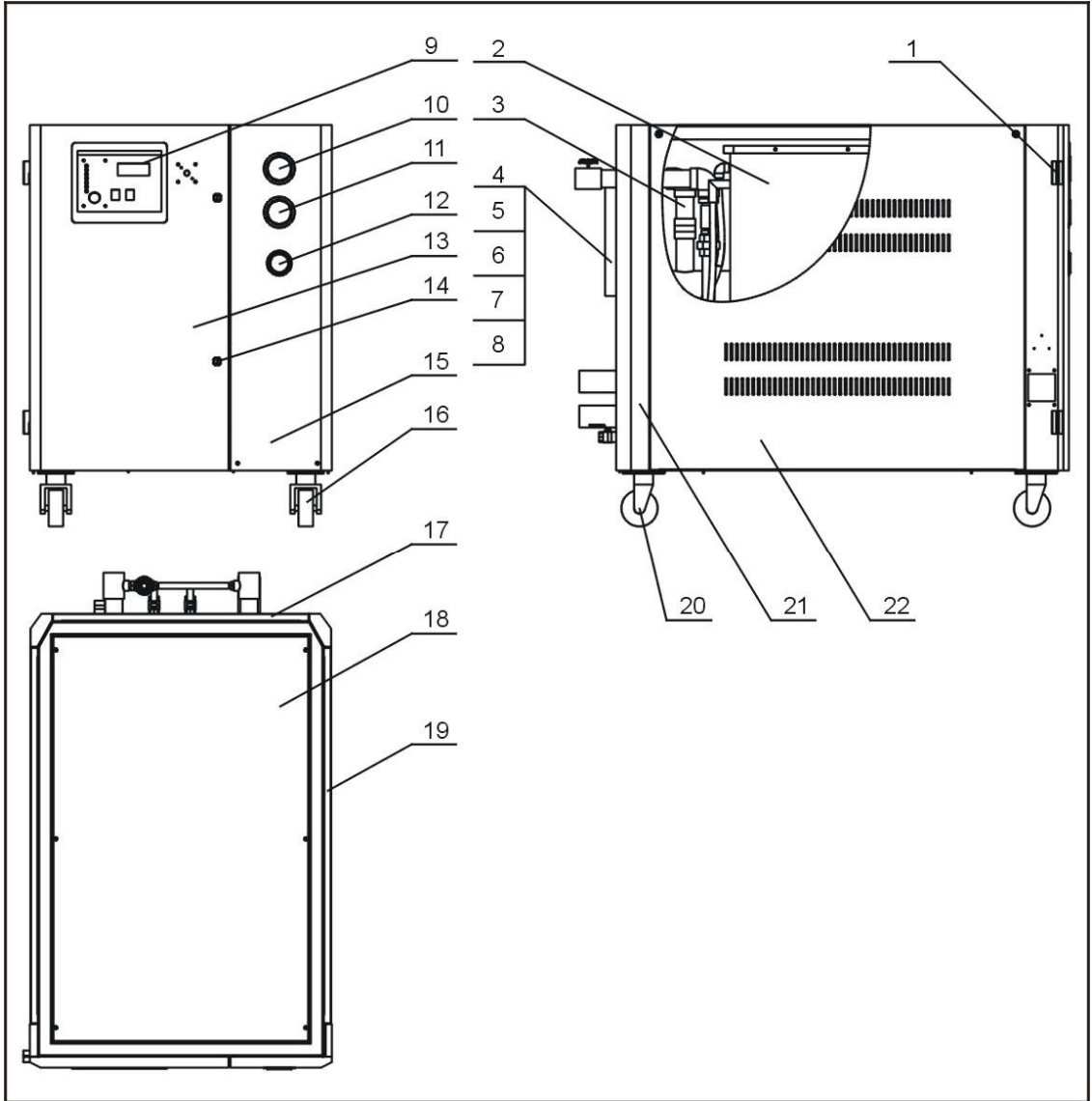
## 8. Refrigerant System Parts List(SIC-9W~14W-R2)

No.	Name	Parts No.
1	Hexagon screw bolt GB/T5783 M8x50-8.8-longzine	YW60085000000
2	Big gasket C GB/T968 (8.4x24x2) -longzine	YW66082200100
3	Standard spring washer GB/T93 8-longzine	YW65008000100
4	Hexagon nut GB/T6170 M8-longzine	YW64080600000
5	Air suction pipe	-
6	Liquid pipe 3	-
7	Exhaust pipe	-
8	Hexagon screw bolt GB/T5783 M8x30-8.8-longzine	YW60083000200
9	Liquid pipe 4	-
10	Evaporator	-
11	Liquid valve 4	-
12	Thermostate expansion valve	-
13	Condenser	-
14	Drying filter	YW85016530100
15	Liquid pipe 2	-
16	Liquid pipe solenoid valve(Option)	-
17	Refrigerant indicator(Option)	YW85001300100
18	Bypass solenoid valve	YE32008300000
19	Compressor	-

\* means possible broken parts. \*\* means easy broken parts. Spare backup is suggested. Please confirm the version number of the manual before you order to ensure the stock number and the parts are consistent.



### 9. General Assembly Diagram (SIC-21W~28W-R2)



Note: For details of the numbers in the parts drawing, please refer to the part list in 10

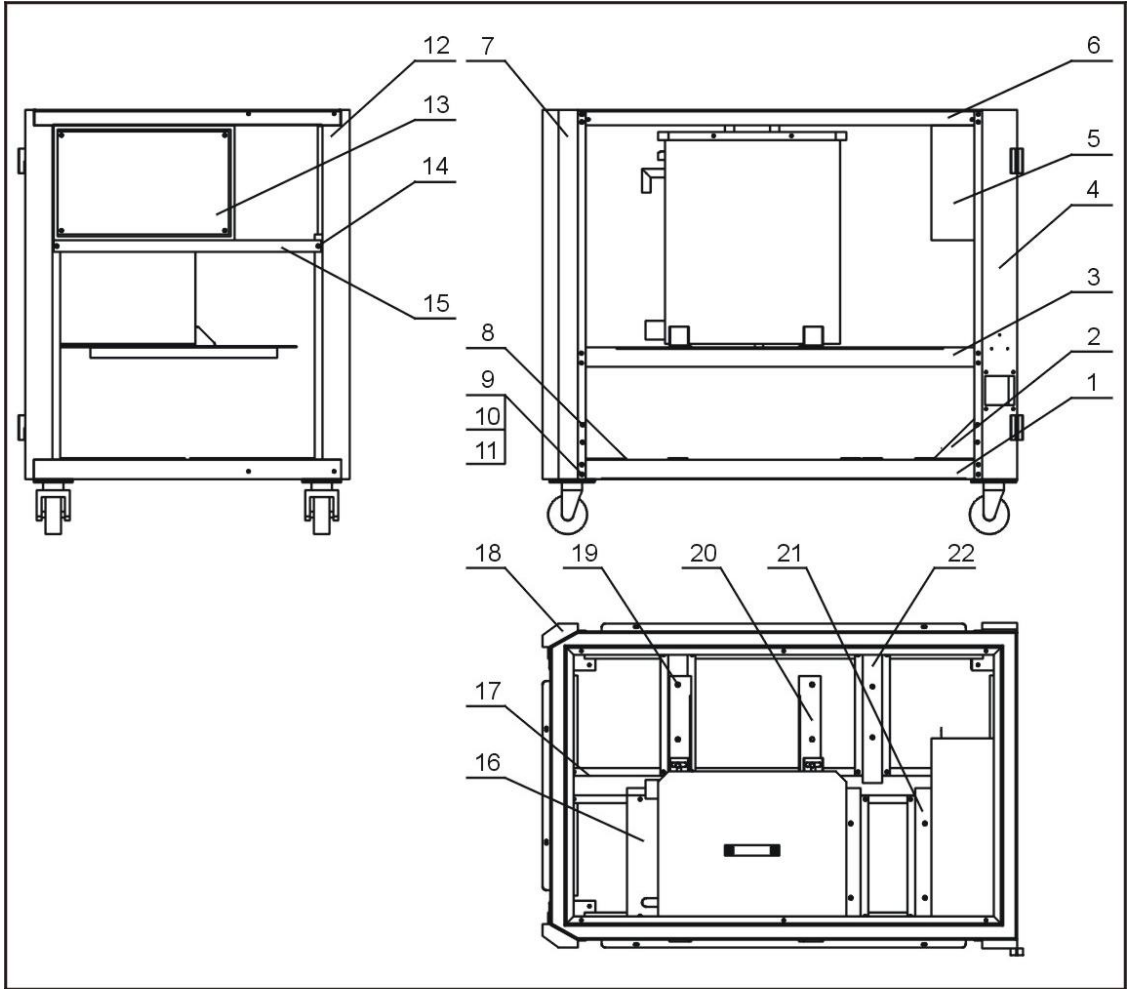
## 10. General Assembly Parts List(SIC-21W~28W-R2)

No.	Name	Parts No.
1	Hinge (left)	-
2	Water tank	-
3	System assembly	-
4	Level indicatorcover(Optional)	BL90006800020
5	Galss tube(Optional)	YW70963000000
6	Liquid level sensor(Optional)	BH12030000010
7	Level indicatorscrew(Optional)	BH12060700110
8	Level indicatorbase(Optional)	YW20000000400
9	Panel	-
10	High pressure gauge	YW85005500000
11	Low pressure gauge	YW85003500000
12	Water pressure gauge	YW85001000100
13	Front door plate	-
14	Gate lock	YW00000000100
15	Gauge plate	-
16	Braking black caster 4"	YW03000400000
17	Rear plate	-
18	Top plate	-
19	Side plate (right)	-
20	Movable black caster 4"	YW03000400200
21	Rack	-
22	Side plate (left)	-

\* means possible broken parts. \*\* means easy broken parts. Spare backup is suggested.

Please confirm the version number of the manual before you order to ensure the stock number and the parts are consistent.

### 11. Racking Diagram (SIC-21W~28W-R2)



Note: For details of the numbers in the parts drawing, please refer to the part list in 12

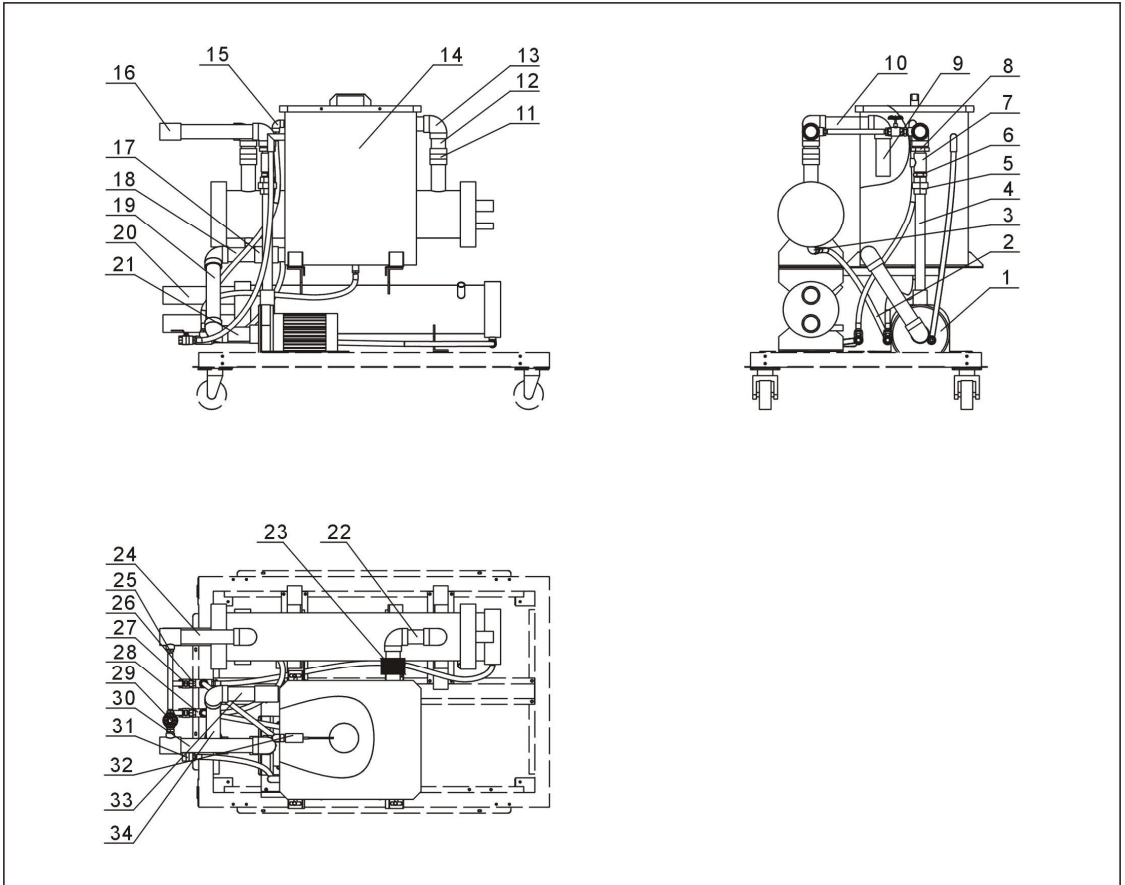
## 12. Rack Parts List (SIC-21W~28W-R2)

No.	Name	Parts No.
1	Base frame	-
2	Trangle support (right)	-
3	Water tank beam	-
4	Front stand column (left)	-
5	Electric control cabinet	-
6	Top frame	-
7	Back stand column (left)	-
8	Cross recessed raised countersunk head screw JIS1111 M6x10-longzine	YW62061000000
9	Hexagon screw bolt GB/T5781 M6x20-4.8-longzine	YW60062000100
10	Flat gasket A GB/T97.1 6-longzine	YW66061300000
11	Standard spring washer GB/T93 6-longzine	YW65006000100
12	Front stand column (right)	-
13	Electric mounting plate	-
14	Hexagon screw bolt GB/T5783 M8x30-8.8-longzine	YW60083000200
15	Electric cabinet supporting	-
16	Pump beam	-
17	Middle beam	-
18	Back stand column (left)	-
19	Water tank supporting (left)	-
20	Water tank supporting (right)	-
21	Compressor beam	-
22	Evaporator beam	-

\* means possible broken parts. \*\* means easy broken parts. Spare backup is suggested.

Please confirm the version number of the manual before you order to ensure the stock number and the parts are consistent.

### 13. Water System Diagram (SIC-21W-R2)



Note: For details of the numbers in the parts drawing, please refer to the part list in 14

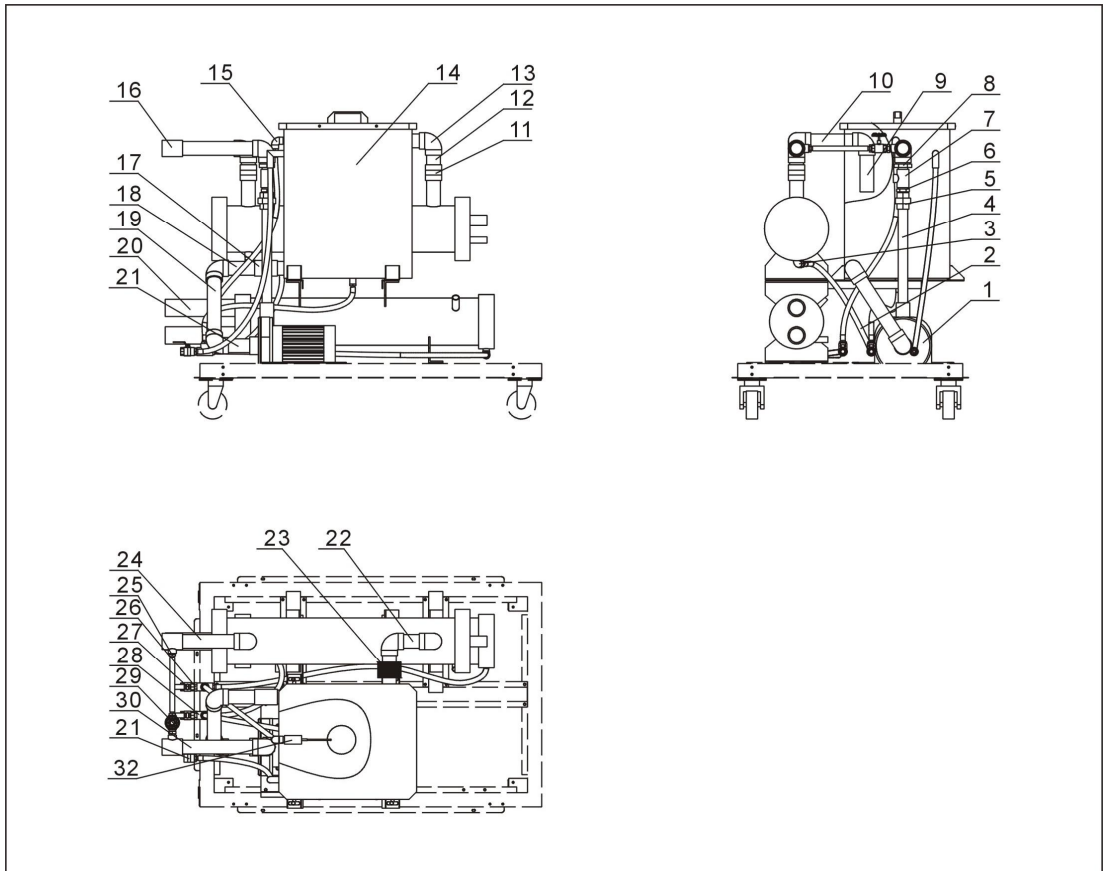
#### 14. Water System Parts List (SIC-21W-R2)

No.	Name	Parts No.
1	Water pump	-
2	Steel wire rubber hose 1/2"	YR60051000000
3	Street elbow 1/2"	YW53121200000
4	Pipe 6	-
5	Adjustable joint of galvanized pipe 1"	YW54000100000
6	Inner joint of galvanized pipe 1"	YW50000100000
7	Three way of galvanized pipe 1"x1/2"	YW52101200100
8	Galvanized stretch connector 1.5" x 1"	YW57150100000
9	Pipe 4	-
10	Pipe 3	-
11	Direct connection of galvanized pipe 1.5"	YW51000100000
12	Pipe 1	-
13	Galvanized pipe elbow 1.5"	YW53011200000
14	Water tank assembly	-
15	Galvanized pipe elbow 1/2"	YW53100200100
16	Three way of galvanized pipe 1.5" x 1/2"	YW52151200100
17	Black rubber hose	YR60480500000
18	Pipe 10	-
19	Pipe 8	-
20	Condensor water pipe	-
21	Pipe 9	-
22	Pipe 2	-
23	Flow switch (Option)	YW85005000000
24	Pipe 5	
25	Copper inserted core M16 x 1/2PT	BH12161200010
26	Inner joint of galvanized pipe 1/2"	YW50000400000
27	Ball valve 1/2"	YW50010200100
28	Three way of galvanized pipe 1/2"	YW52100200000
29	Sluice valve 1/2"	YW50010200000
30	Pipe 7	-
31	Direct connection of galvanized pipe 1/2"	YW51001200000
32	Float switch 1/2"	YW59010200000
33	Pipe 13	-
34	Pipe 14	-

\* means possible broken parts. \*\* means easy broken parts. Spare backup is suggested.

Please confirm the version number of the manual before you order to ensure the stock number and the parts are consistent.

### 15. Water System Diagram (SIC-28W-R2)



Note: For details of the numbers in the parts drawing, please refer to the part list in 16

## 16. Water System Parts List (SIC-28W-R2)

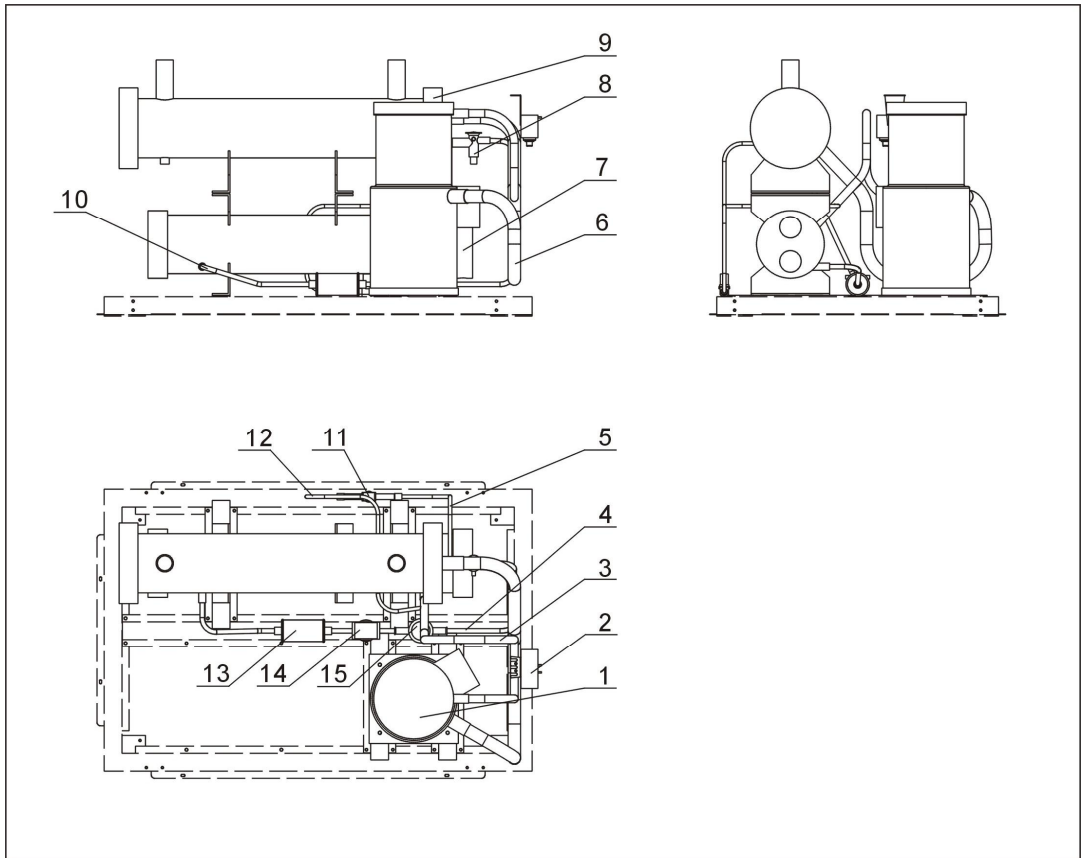
No.	Name	Parts No.
1	Water pump	-
2	Steel wire rubber hose 1/2"	YR60051000000
3	Street elbow 1/2"	YW53121200000
4	Pipe 6	-
5	Adjustable joint of galvanized pipe 1"	YW54000100000
6	Inner joint of galvanized pipe 1"	YW50000100000
7	Three way of galvanized pipe 1"x1/2"	YW52101200100
8	Galvanized stretch connector 1.5" x 1"	YW57150100000
9	Pipe 4	-
10	Pipe 3	-
11	Direct connection of galvanized pipe 1.5"	YW51000100000
12	Pipe 1	-
13	Galvanized pipe elbow 1.5"	YW53011200000
14	Water tank assembly	-
15	Galvanized pipe elbow 1/2"	YW53100200100
16	Three way of galvanized pipe 1.5" x 1/2"	YW52151200100
17	Black rubber hose	YR60480500000
18	Pipe 10	-
19	Pipe 8	-
20	Pipe 11	-
21	Pipe 9	-
22	Pipe 2	-
23	Flow switch (Option)	YW85005000000
24	Pipe 5	-
25	Copper inserted core M16x1/2PT	BH12161200010
26	Inner joint of galvanized pipe 1/2"	YW50000400000
27	Ball valve 1/2"	YW50010200100
28	Three way of galvanized pipe 1/2"	YW52100200000
29	Sluice valve 1/2"	YW50010200000
30	Pipe 7	-
31	Direct connection of galvanized pipe 1/2"	YW51001200000
32	Float switch 1/2"	YW59010200000

\* means possible broken parts. \*\* means easy broken parts. Spare backup is suggested.

Please confirm the version number of the manual before you order to ensure the stock number and the parts are consistent.



### 17. Refrigerant System Diagram (SIC-21W-R2)



Note: For details of the numbers in the parts drawing, please refer to the part list in 18

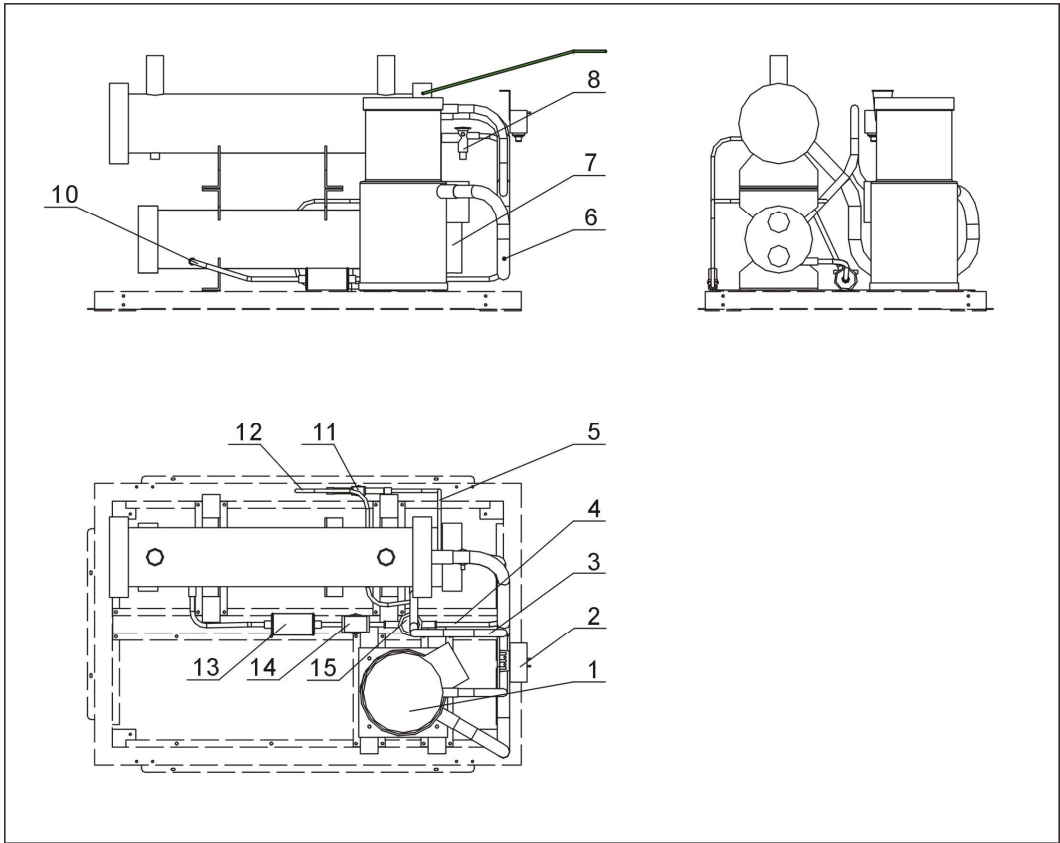
## 18. Refrigerant System Parts List (SIC-21W-R2)

No.	Name	Parts No.
1	Compressor	-
2	High pressure switch	YE10254000300
	Low pressure switch	YE10050600300
3	Exhaust pipe	-
4	Liquid pipe 2	-
5	By pass 2	-
6	Return air pipe	-
7	Condensor	-
8	Expansion valve	-
9	Evaporator	-
10	Liquid pipe 1	-
11	By-pass valve	YE32651600200
12	By pass 1	--
13	Drying filter EK164S	YW85016400100
14	Solenoid valve of liquid pipe (option)	YE32203400000
15	Liquid level indicator HIMI-1TT4 (option)	YW85001400000

\* means possible broken parts. \*\* means easy broken parts. Spare backup is suggested.

Please confirm the version number of the manual before you order to ensure the stock number and the parts are consistent.

### 19. Refrigerant System Diagram (SIC-28W-R2)



Note: For details of the numbers in the parts drawing, please refer to the part list in 20

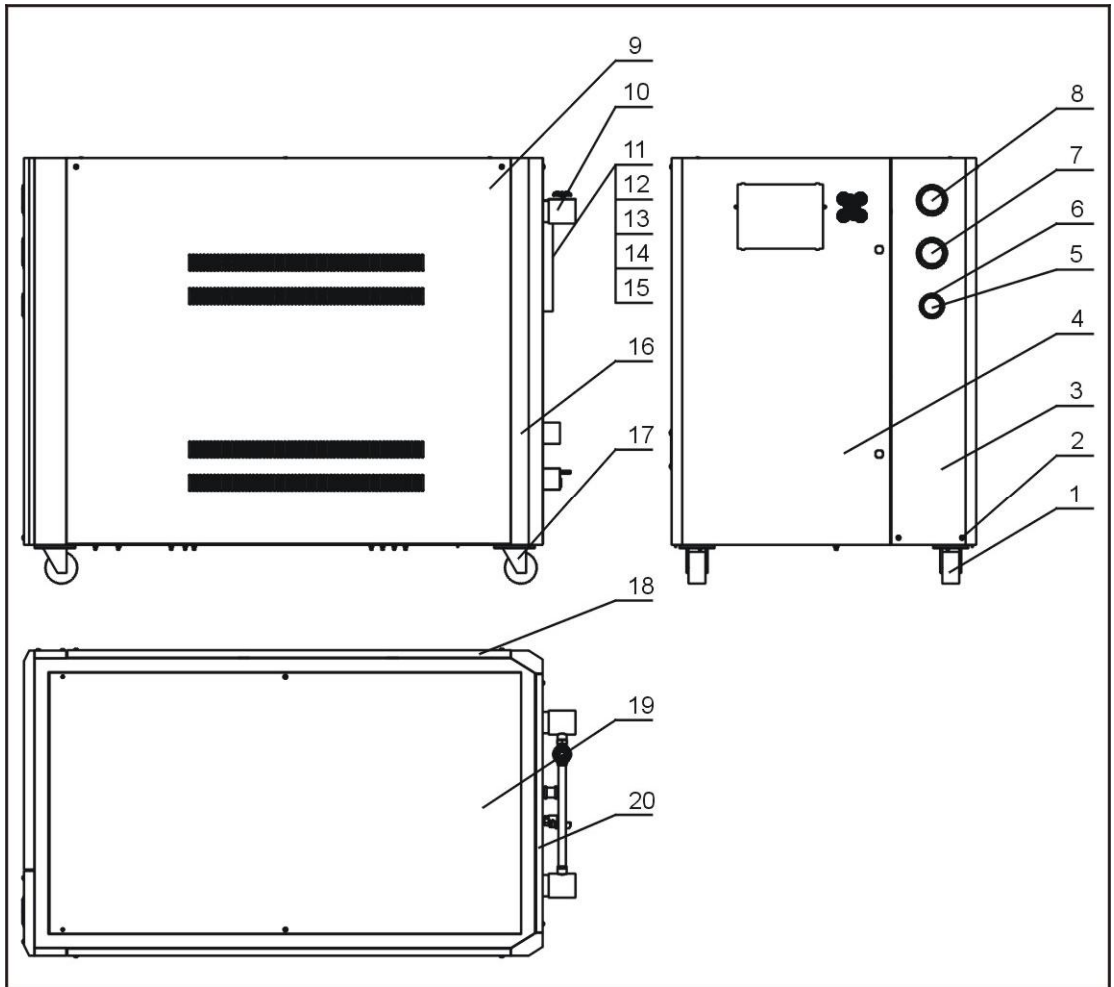
## 20. Refrigerant System Parts List (SIC-28W-R2)

No.	Name	Parts No.
1	Compressor	-
2	High pressure switch	YE10254000300
	Low pressure switch	YE10050600300
3	Exhaust pipe	-
4	Liquid pipe 2	-
5	By pass 2	-
6	Return air pipe	-
7	Condensor	-
8	Expansion valve	-
9	Evaporator	-
10	Liquid pipe 1	-
11	Hot-gas by-pass valve	YE32008300000
12	By pass 1	--
13	Drying filter EK164S	YW85016400100
14	Solenoid valve of liquid pipe	YE32070500000
15	Liquid level indicator HIMI-1TT4 (option)	YW85001400000

\* means possible broken parts. \*\* means easy broken parts. Spare backup is suggested.

Please confirm the version number of the manual before you order to ensure the stock number and the parts are consistent.

## 21. General Assembly Diagram (SIC-33W~42W-R2)



Note: For details of the numbers in the parts drawing, please refer to the part list in 22

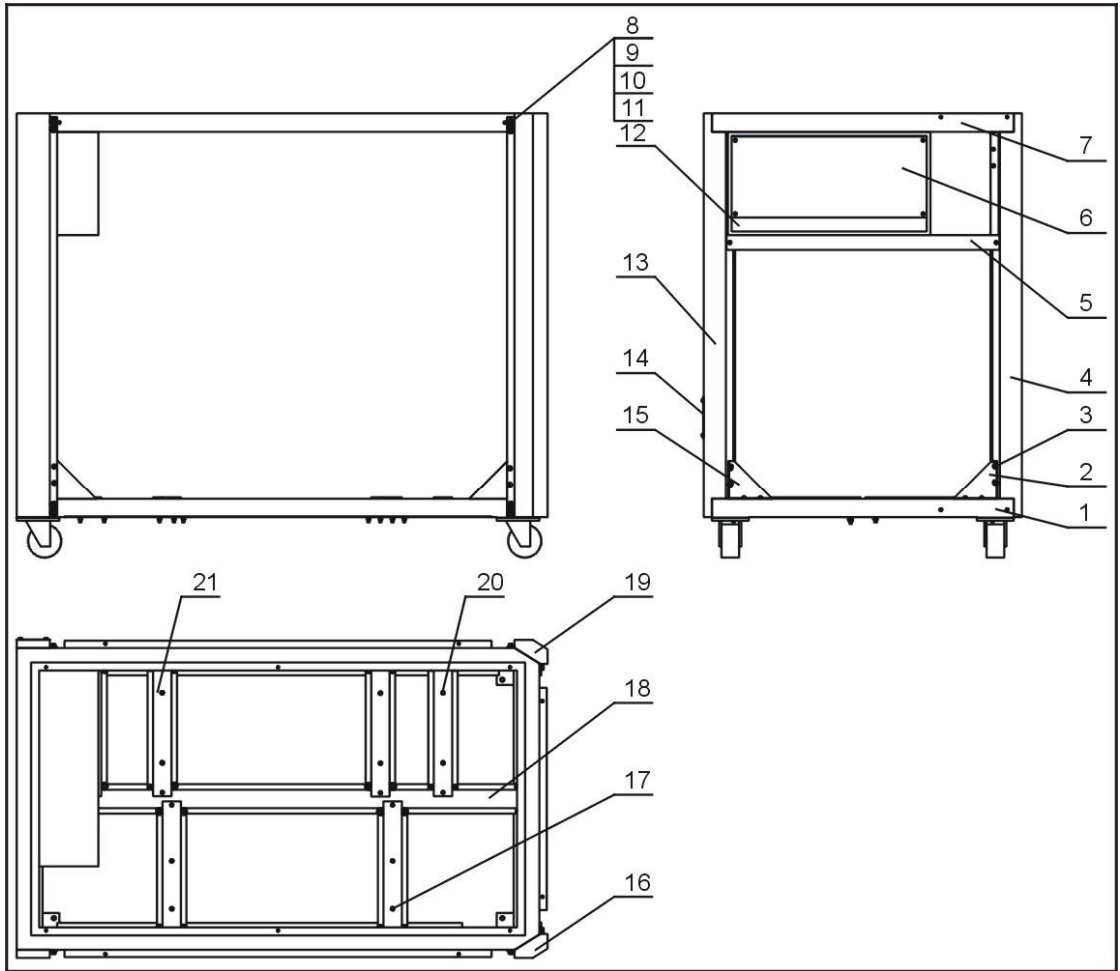
## 22. Genmeral Assembly Parts List (SIC-33W~42W-R2)

No.	Name	Parts No.
1	Movable black caster 4"	YW03000430100
2	Cross socket head cap screw GB/T-818 M6x35-longzine	YW63063500000
3	Gauge plate	-
4	Door plate	-
5	Water pressure gauge 0~10kg	YW85001000100
6	Cross recessed raised countersunk head screw JIS1111M4x10-longzine	YW62041000000
7	Low pressure gauge	YW85003500000
8	High pressure gauge	YW85005500000
9	Side plate (right)	-
10	Refrigeration system	-
11	Level indicator cover (Option)	BL90006800020
12	Glass tube(Option)	YW70963000000
13	Level indicator(Option)	BH12030000010
14	Level indicator screw(Option)	BH12060700110
15	Level indicator base (Option)	YW20000000400
16	Rack	-
17	Braking black caster 4"	YW03000430200
18	Side plate (left)	-
19	Top plate	-
20	Rear plate	-

\* means possible broken parts. \*\* means easy broken parts. Spare backup is suggested.

Please confirm the version number of the manual before you order to ensure the stock number and the parts are consistent.

### 23. Rack Diagram (SIC-33W~42W-R2)



Note: For details of the numbers in the parts drawing, please refer to the part list in 24

## 24. Rack Parts List (SIC-33W~42W-R2)

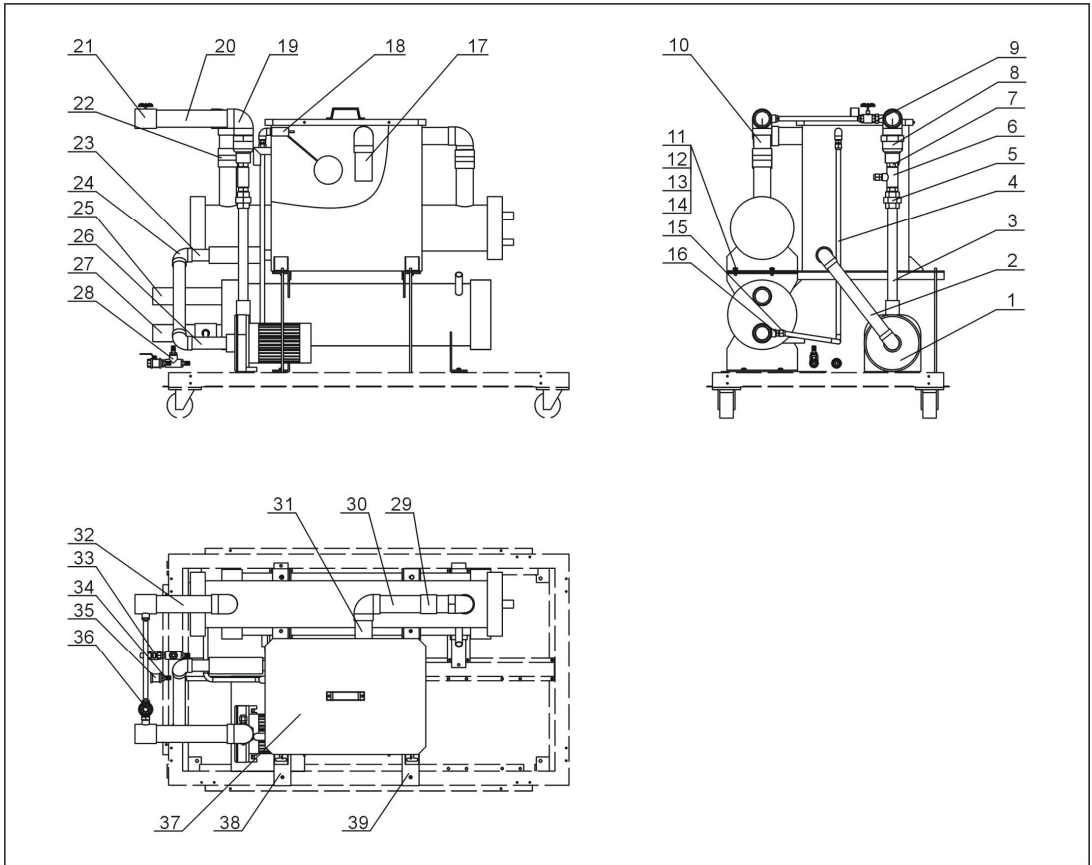
No.	Name	Parts No.
1	Base frame	-
2	Triangle supporting (left)	-
3	Cross recessed raised countersunk head screw JIS1111 M6x20-longzine	YW62062000000
4	Right front stand column	-
5	Front middle beam	-
6	Electric base plate	-
7	Top frame	-
8	Hexagon screw bolt GB/T5781 M6x25-4.8-longzine	YW60062500000
9	Standard spring washer GB/T93 6-longzine	YW65006000100
10	Flat gasket A GB/T97.1 6-longzine	YW66061300000
11	Hexagon nut GB/T6170 M6-longzine	YW64000600300
12	Electric control cabinet	-
13	Left front stand column	-
14	Line jig fixing plate	-
15	Triangle supporting (right)	-
16	Left back stand column	-
17	Condenser fixing beam	-
18	Base frame middle beam	-
19	Right back stand column	-
20	Pump fixing beam	-
21	Compressor fixing beam	-

\* means possible broken parts. \*\* means easy broken parts. Spare backup is suggested.

Please confirm the version number of the manual before you order to ensure the stock number and the parts are consistent.



## 25. Water System Diagram (SIC-33W-R2)



Note: For details of the numbers in the parts drawing, please refer to the part list in 26

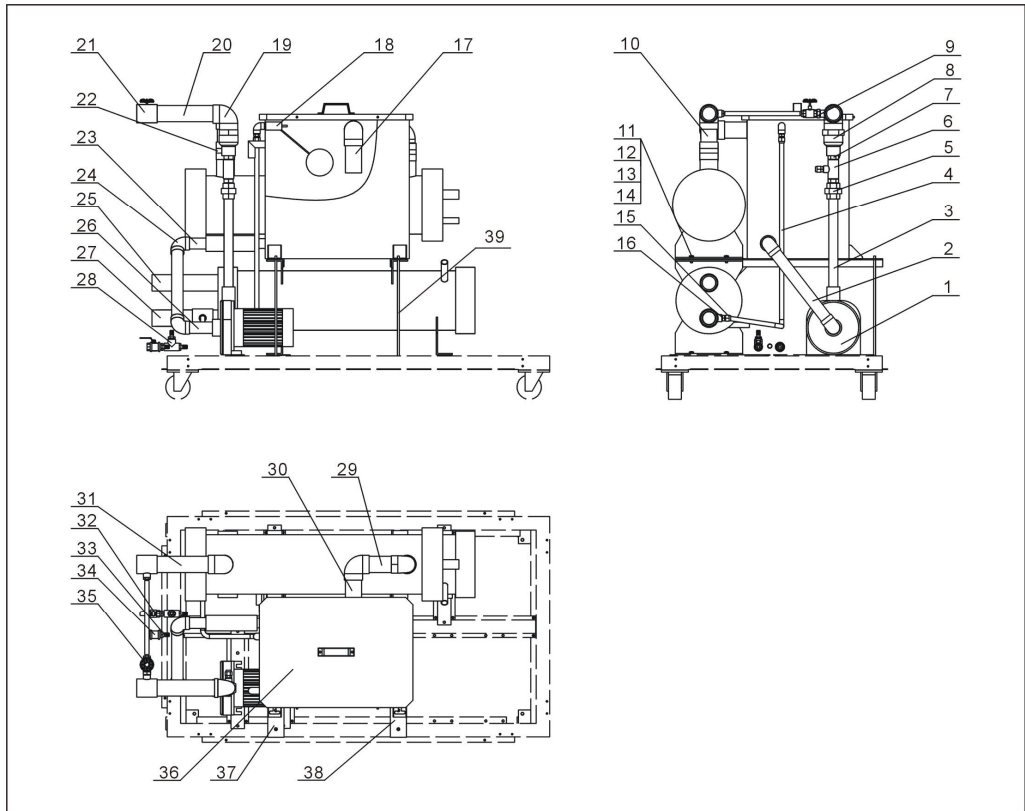
## 26. Water System Parts List (SIC-33W-R2)

No.	Name	Parts No.
1	Water pipe	-
2	Water pipe 8	-
3	Water pipe 10	-
4	Water-refill copper pipe	-
5	Adjustable joint of galvanized pipe 1"	YW54000100000
6	Three way of galvanized pipe 1"x1/2"	YW52101200100
7	Inner joint of galvanized pipe 1"	YW50000100000
8	Concentric educer 2" x 1"	YW56020100000
9	Inner joint of galvanized pipe 1/2"	YW50000400000
10	Water pipe 3	-
11	External hexagonal screw M8x25-longzine 8.8	YW60082500200
12	Standard spring washer GB/T93 8-longzine	YW65008000100
13	Big gasket C GB/T968 (8.4x24x2) -longzine	YW66082200100
14	Hexagon nut GB/T6170 M8-longzine	YW64080600000
15	Copper horn nut 4"	BH12000401010
16	Male connector of Tonflon pipe 1/2H x 1/2PT	BH12010200210
17	Water pipe 4	-
18	Float switch 1/2"	YW59010200000
19	Galvanized pipe elbow 2"	YW51000200000
20	Water pipe 1	-
21	Three way of galvanized pipe 2" x 1/2"	YW52201200100
22	Direct connection of galvanized pipe 2"	YW51000200000
23	Water pipe 7	-
24	Galvanized pipe elbow 1.25"	YW53012500100
25	Cooling water pipe 1	-
26	Water pipe 9	-
27	Cooling water pipe 2	-
28	Three way of galvanized pipe 1/2"	YW52100200000
29	Flow switch 1" (Option)	YW85005000000
30	Water pipe 1	-
31	Water pipe 5	-
32	Water pipe 2	-
33	Copper ball valve 1/2"	YW50010200100
34	Copper inserted core M1 x 1/2PT	BH12161200010
35	Direct connection of galvanized pipe 1/2"	YW52100200000
36	Sluice valve 1/2"	YW50010200000
37	Water tank assembly	-
38	Water tank support 2	-
39	Water tank support 1	-
40	Lead screw M10 x 1000	YW69100100000

\* means possible broken parts. \*\* means easy broken parts. Spare backup is suggested.

Please confirm the version number of the manual before you order to ensure the stock number and the parts are consistent.

## 27. Water System Diagram (SIC-42W-R2)



Note: For details of the numbers in the parts drawing, please refer to the part list in 28

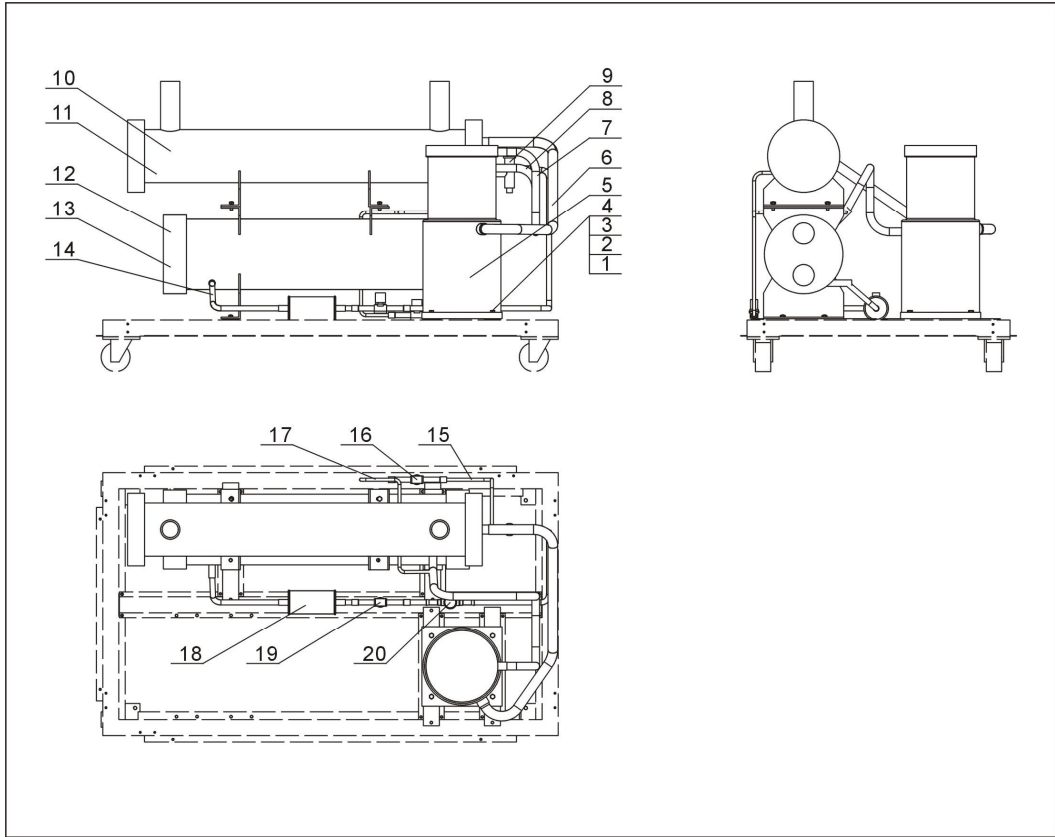
## 28. Water System Parts List (SIC-42W-R2)

No.	Name	Parts No.
1	Water pipe	-
2	Water pipe 8	-
3	Water pipe 10	-
4	Water-refill copper pipe	
5	Adjustable joint of galvanized pipe 1"	YW54000100000
6	Three way of galvanized pipe 1"x1/2"	YW52101200100
7	Inner joint of galvanized pipe 1"	YW50000100000
8	Concentric reducer 2" x 1"	YW56020100000
9	Inner joint of galvanized pipe 1/2"	YW50000400000
10	Water pipe 3	-
11	External hexagonal screw M8x25-longzine 8.8	YW60082500200
12	Standard spring washer GB/T93 8-longzine	YW65008000100
13	Big gasket C GB/T968 (8.4x24x2)- -longzine	YW66082200100
14	Hexagon nut GB/T6170 M8-longzine	YW64080600000
15	Copper horn nut 4"	BH12000401010
16	Male connector of Tonflon pipe 1/2H x 1/2PT	BH12010200210
17	Water pipe 4	-
18	Float switch 1/2"	YW59010200000
19	Galvanized pipe elbow 2"	YW51000200000
20	Water pipe 1	-
21	Three way of galvanized pipe 2" x 1/2"	YW52201200100
22	Direct connection of galvanized pipe 2"	YW51000200000
23	Water pipe 7	-
24	Galvanized pipe elbow 1.25"	YW53012500100
25	Cooling water pipe 1	-
26	Water pipe 9	-
27	Cooling water pipe 2	-
28	Three way of galvanized pipe 1/2"	YW52100200000
29	Water pipe 6	-
30	Water pipe 5	-
31	Water pipe 2	-
32	Copper ball valve 1/2"	YW50010200100
33	Copper inserted core M16 x 1/2PT	BH12161200010
34	Direct connection of galvanized pipe 1/2"	YW52100200000
35	Sluice valve 1/2"	YW50010200000
36	Water tank assembly	-
37	Water tank support 2	-
38	Water tank support 1	-
39	Lead screw M10 x 1000	YW69100100000

\* means possible broken parts. \*\* means easy broken parts. Spare backup is suggested.

Please confirm the version number of the manual before you order to ensure the stock number and the parts are consistent.

### 29. Refrigerant System Diagram (SIC-33W-R2)



Note: For details of the numbers in the parts drawing, please refer to the part list in 30

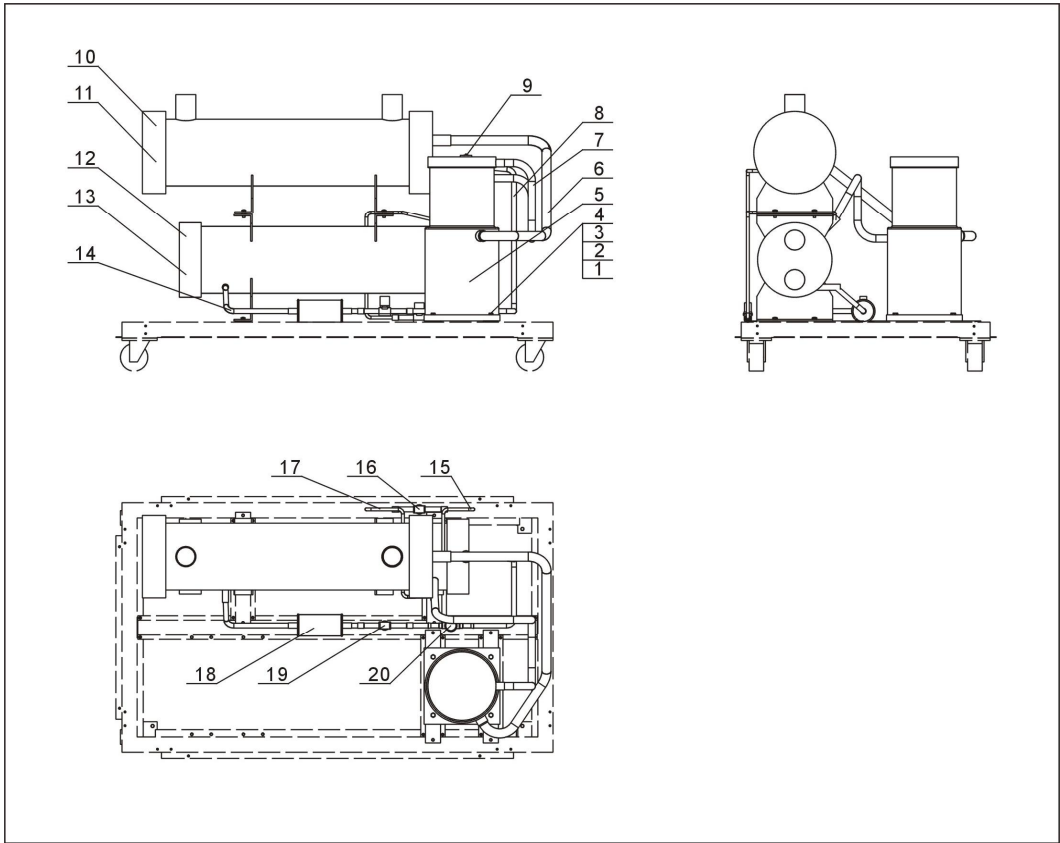
### 30. Refrigerant System Parts List (SIC-33W-R2)

No.	Name	Parts No.
1	Hexagon screw bolt GB/T5783 M8x50-8.8-longzine	YW60085000000
2	Standard spring washer GB/T93 8-longzine	YW65008000100
3	Big gasket C GB/T968 (8.4x24x2) -longzine	YW66082200100
4	Hexagon nut GB/T6170 M8-longzine	YW64080600000
5	Compressor	-
6	Return air pipe	-
7	Exhaust pipe	-
8	Liquid pipe 2	-
9	Expension valve TGEL13	-
10	Evaporator	-
11	Evaporator(voltage 60HZ)	-
12	Condensor	-
13	Condensor (voltage 60HZ )	-
14	Liquid pipe 1	-
15	By-pass pipe 1	-
16	Hot-gas by-pass valve NSV8W-L	YE32008300000
17	By-pass pipe 2	-
18	Drying filter EK165S	YW85016500100
19	Solenoid valve of liquid pipe (option)	YE32070500000
20	Liquid level indicator HMI-1TT5 (option)	YW85001500100

\* means possible broken parts. \*\* means easy broken parts. Spare backup is suggested.

Please confirm the version number of the manual before you order to ensure the stock number and the parts are consistent.

### 31. Refrigerant System Diagram (SIC-42W-R2)



Note: For details of the numbers in the parts drawing, please refer to the part list in 32

### 32. Refrigerant System Parts List(SIC-42W-R2)

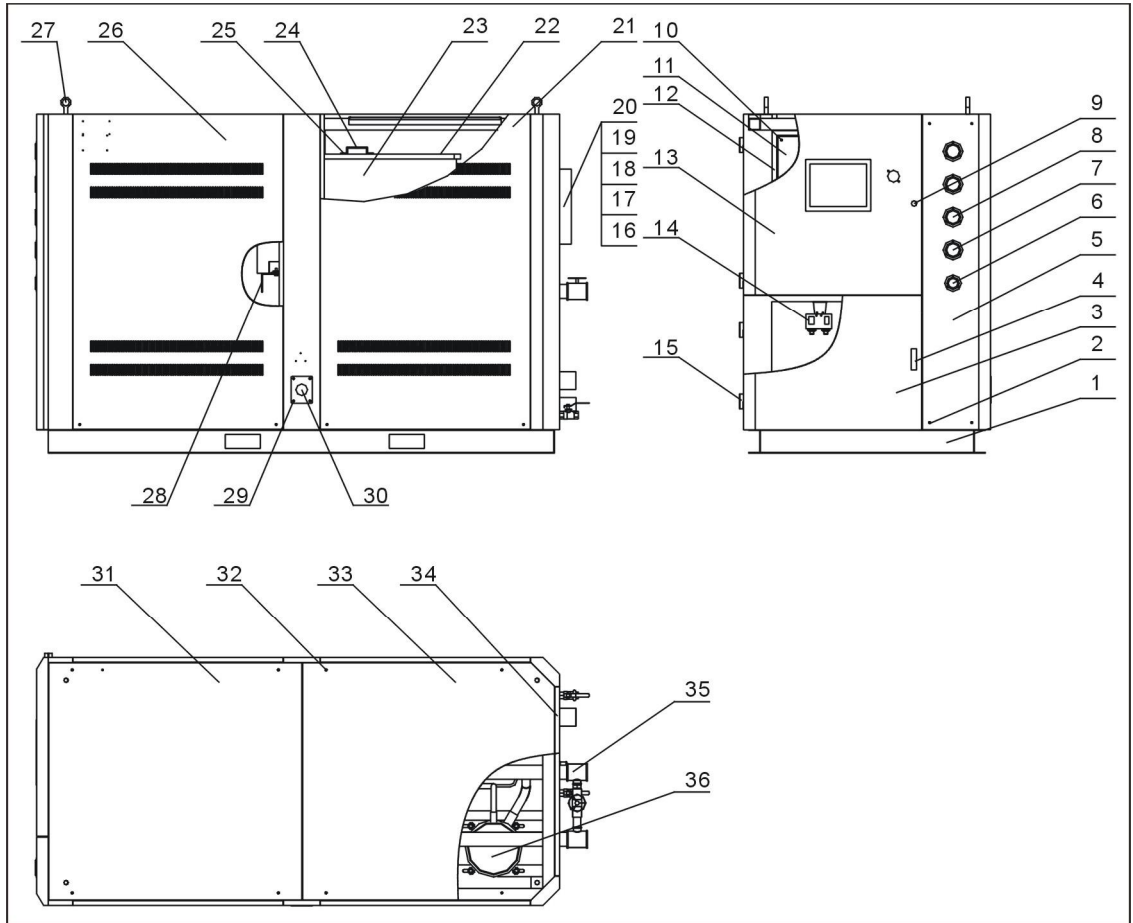
No.	Name	Parts No.
1	Hexagon screw bolt GB/T5783 M8x50-8.8-longzine	YW60085000000
2	Standard spring washer GB/T93 8-longzine	YW65008000100
3	Big gasket C GB/T968 (8.4x24x2) -longzine	YW66082200100
4	Hexagon nut GB/T6170 M8-longzine	YW64080600000
5	Compressor 15HP	-
6	Return air pipe	-
7	Exhaust pipe	-
8	Liquid pipe 2	-
9	Expension valve TGEL13	-
10	Evaporator	-
11	Evaporator (voltage 60HZ)	-
12	Condensor	-
13	Condensor (voltage 60HZ)	-
14	Liquid pipe 1	-
15	By-pass pipe 1	-
16	Hot-gas by-pass valve NSV8W-L	YE32008300000
17	By-pass pipe 2	-
18	Drying filter EK307S	YW85030700000
19	Solenoid valve of liquid pipe (option)	YE32070500000
20	Liquid level indicator HMI-1TT5(option)	YW85001500100

\* means possible broken parts. \*\* means easy broken parts. Spare backup is suggested.

Please confirm the version number of the manual before you order to ensure the stock number and the parts are consistent.



### 33. General Assembly Diagram (SIC-56W~84W-R2)



Note: For details of the numbers in the parts drawing, please refer to the part list in 34

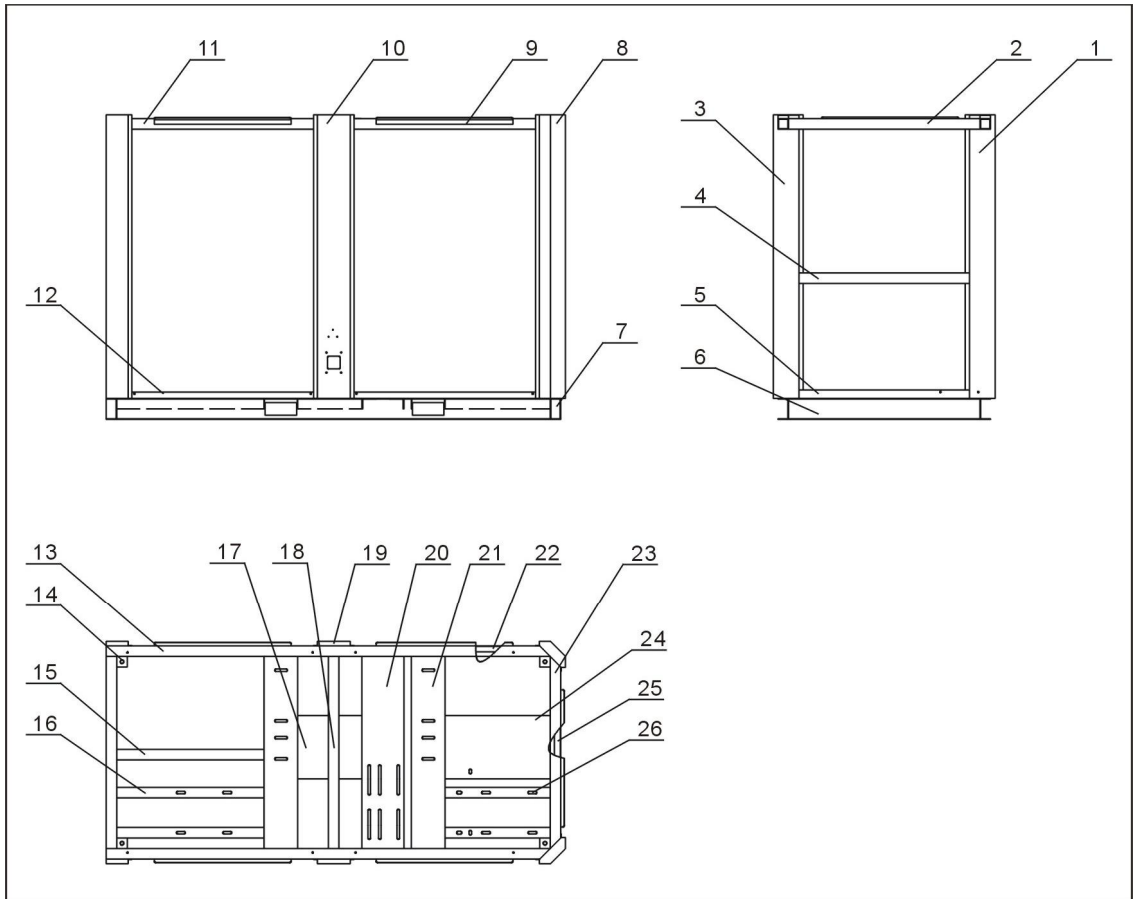
### 34. General Assemble Diagram Parts List (SIC-56W~84W-R2)

No.	Name	Parts No.
1	Rack	-
2	Inner hexagon cylindrical screw GB/T70.1 M6x60-12.9-longzine	YW61066000000
3	Front plate 2	-
4	Cabinet lock	YW00717100000
5	Gauge plate	-
6	Water pressure gauge	YW85001000100
7	Low pressure gauge	YW85003500000
8	High pressure gauge	YW85005500000
9	Door lock	YW00000000100
10	Cross recessed raised countersunk head screw JIS1111 M6x15-longzine	YW62061500000
11	Electrical cabinet base plate	-
12	Electric control cabinet	-
13	Front door plate 1	-
14	High pressure switch	YE10254000300
	Low pressure switch	YE10050600300
15	Hinge	YE06022500000
16	Indicator base (Option)	YE20000000400
17	Indicator nut (Option)	BH12060700110
18	Refrigerant indicator STM-310(Option)	BH12030000010
19	Glass pipe(Option)	YW70963000000
20	Liquid level glass cover(Option)	BL90006800020
21	Side plate 2	-
22	Tank cover	-
23	Tank body	-
24	Handle	BW20012000040
25	Cross recessed raised countersunk head screw JIS1111 M6x10-longzine	YW62061000000
26	Side plate 1	-
27	Stationary ring M16	YW09001600000
28	Water tank supporting	-
29	Cross recessed raised countersunk head screw JIS1111 M5x10-longzine	YW62051000100
30	Cable fixed plate	-
31	Cover plate 1	-
32	Cross recessed raised countersunk head screw JIS1111 M6x30-longzine	YW62063000000
33	Cover plate 2	-
34	Rear plate	-
35	Water system	-
36	Refrigerant system	-

\*\* means possible broken parts. \*\* means easy broken parts. Spare backup is suggested.

Please confirm the version number of the manual before you order to ensure the stock number and the parts are consistent.

### 35. Rack Diagram (SIC-56W~84W-R2)



Note: For details of the numbers in the parts drawing, please refer to the part list in 36

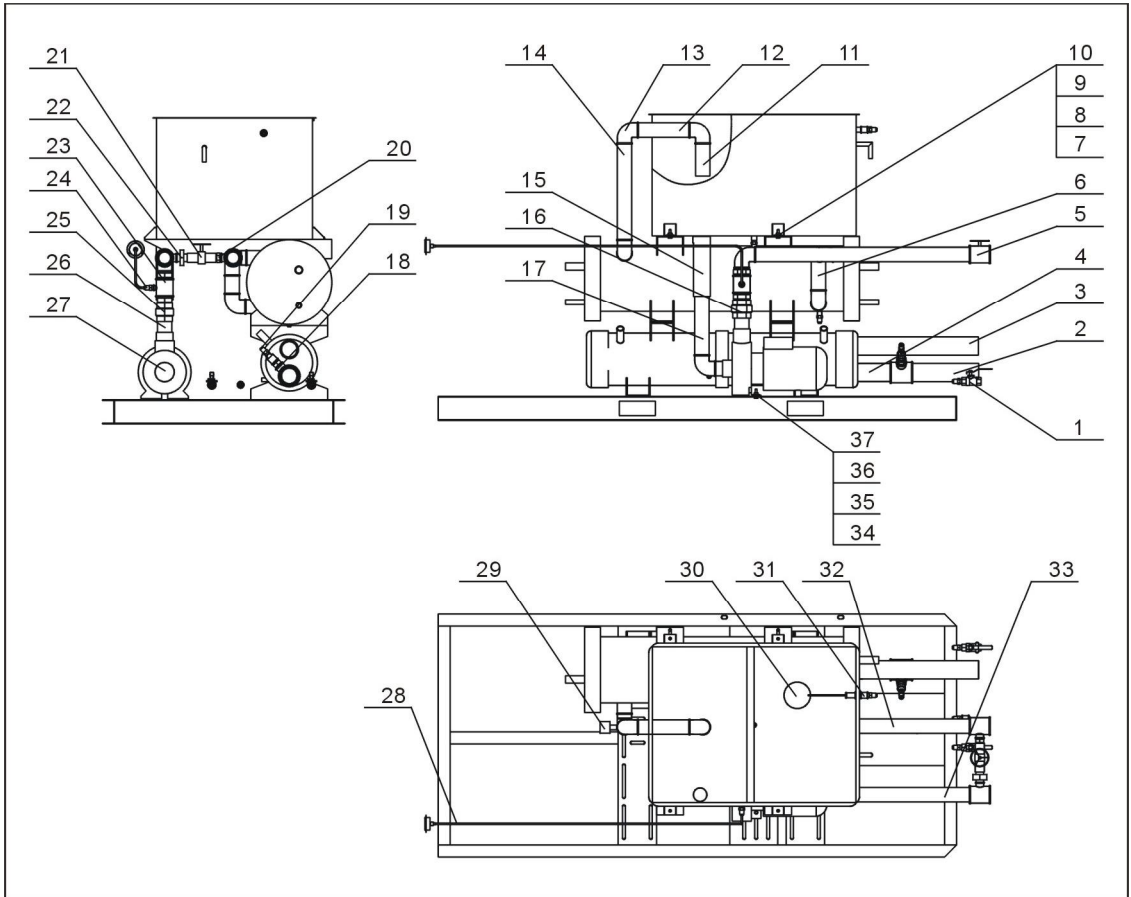
### 36. Rack Parts List (SIC-56W~84W-R2)

No.	Name	Parts No.
1	Workpiece 1	-
2	Workpiece 2	-
3	Workpiece 3	-
4	Workpiece 4	-
5	Workpiece 5	-
6	Workpiece 6	-
7	Workpiece 7	-
8	Workpiece 8	-
9	Workpiece 9	-
10	Workpiece 10	-
11	Workpiece 11	-
12	Workpiece 12	-
13	Workpiece 13	-
14	Workpiece 14	-
15	Workpiece 15	-
16	Workpiece 16	-
17	Workpiece 17	-
18	Workpiece 18	-
19	Workpiece 19	-
20	Workpiece 20	-
21	Workpiece 21	-
22	Workpiece 22	-
23	Workpiece 23	-
24	Workpiece 24	-
25	Workpiece 25	-
26	Workpiece 26	-

\* means possible broken parts. \*\* means easy broken parts. Spare backup is suggested.

Please confirm the version number of the manual before you order to ensure the stock number and the parts are consistent.

### 37. Water System Diagram(SIC-56W~84W-R2)



Note: For details of the numbers in the parts drawing, please refer to the part list in 38

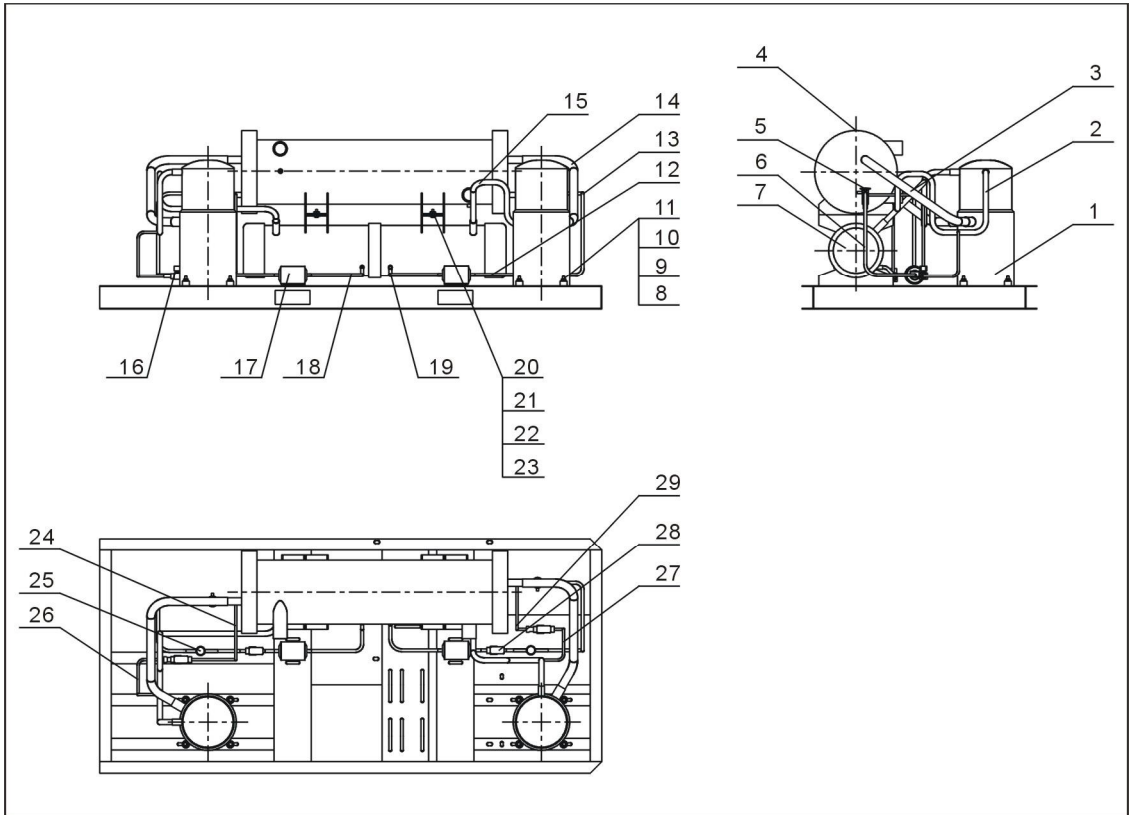
### 38. Water System Parts List (SIC-56W~84W-R2)

No.	Name	Parts No.
1	Copper cored ballvalve 1/2"	YW50010200100
2	Galvanized steel pipe 1	-
3	Galvanized steel pipe 2	-
4	Galvanized steel pipe 3	-
5	T connection 2"×1"	YW52020100000
6	Galvanized steel pipe 11	-
7	Hexagon screw bolt GB/T5783 M8x30-8.8-longzine	YW60083000200
8	Flat gasket A GB/T97.1(8.4x16x1.6) -longzine	YW66081600000
9	Standard spring washer GB/T93 8-longzine	YW65008000100
10	1 style Hexagon nut GB6170 M8-A2-70(SUS)	YW61000800200
11	Galvanized steel pipe 5	-
12	Galvanized steel pipe 6	-
13	Pipe elbow2"	YW53000200100
14	Galvanized steel pipe 7	-
15	Black rubber pipe	YR60600300000
16	Inner joint 2"	YW50000200000
17	Galvanized steel pipe 8	-
18	T connection 2-1/2"×1/2"	YW52251200000
19	Copper inserted core 1/2"	BH12161200010
20	Inner joint 1"	YW50000100000
21	Sluice valve 1"	YW50000101000
22	Loose joint 1"	YW54000100000
23	T connection 2" ×1/2"	YW52201200100
24	Teflon pipe connector 1/4" ×1/2"	BH12010400610
25	Loose joint 2"	YW54000200000
26	Galvanized steel pipe 9	-
27	Pump	-
28	Copper pipe 1	-
29	Flow switch 1"	YW85005000000
30	Floating ball valve 1/2"	YW59010200000
31	Direct connection 1/2"	YW51001200000
32	Galvanized steel pipe 10	-
33	Galvanized steel pipe 4	-
34	External hexagonal screw M10x30-longzine 8.8	YW60103000100
35	Big gasket A GB/T96 10(10.5x30x2.5) -longzine	YW66103200000
36	Standard spring washer GB/T93 10-longzine	YW65010000000
37	Hexagon nut GB/T6170 M10-longzine	YW64001000100

\* means possible broken parts. \*\* means easy broken parts. Spare backup is suggested.

Please confirm the version number of the manual before you order to ensure the stock number and the parts are consistent.

### 39. Refrigerant System Diagram (SIC-56W~84W-R2)



Note: For details of the numbers in the parts drawing, please refer to the part list in 40

#### 40. Refrigerant Sytem Parts List (SIC-56W~84W-R2)

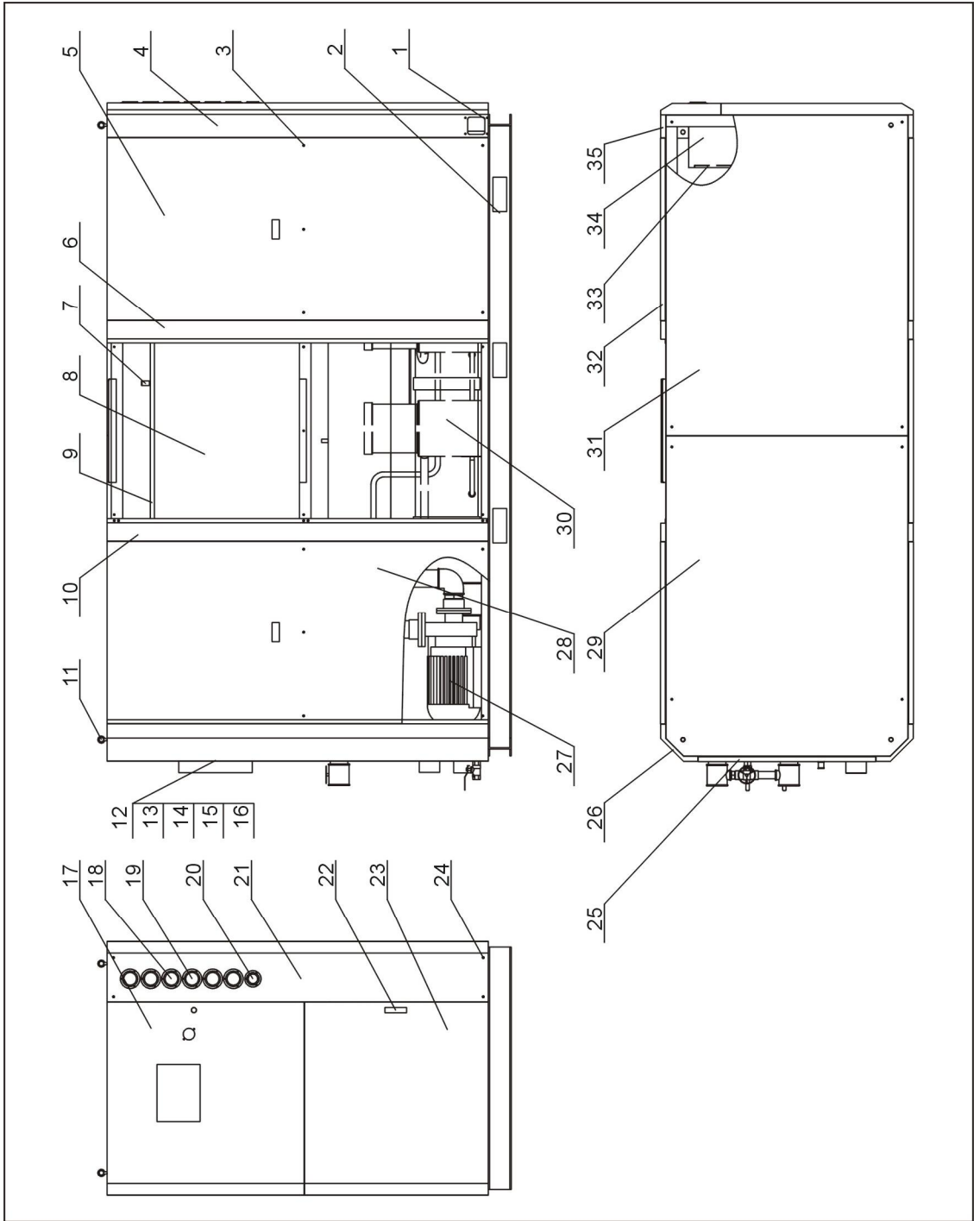
No.	Name	Parts No.
1	Compressor	-
2	Compressor 1 exhaust pipe	-
3	Compressor 1 return-air pipe	-
4	Evaporator	-
5	Thermostate expansion valve	-
6	Compressor 1 liquid pipe 1	-
7	Condensor	-
8	Hexagon screw bolt GB/T5783 M8x50-8.8-longzine	YW60085000000
9	Big gasket C GB/T968 (8.4x24x2) -longzine	YW66082200100
10	Standard spring washer GB/T93 8-longzine	YW65008000100
11	Hexagon nut GB/T6170 M8-longzine	YW64080600000
12	Compressor 2 liquid pipe 2	-
13	Compressor 2 liquid pipe 1	-
14	Compressor 2 return-air pipr	-
15	Compressor 2 exhuaust pipe	-
16	Bypass solenoid valve	YE32008300000
17	Drying filter	YW85016400100
18	Compressor 1 liquid pipe 2	-
19	Compressor 2 liquid pipe 3	-
20	External hexagonal screw M10x30-longzine 8.8	YW60103000100
21	Big gasket A GB/T96 10(10.5x30x2.5) -longzine	YW66103200000
22	Standard spring washer GB/T93 10-longzine	YW65010000000
23	Hexagon nut GB/T6170M10-longzine	YW64001000300
24	Compressor 1 copper pipe 2	-
25	Refrigerant indicator (Option)	YW85001400000
26	Compressor 1 copper pipe 1	-
27	Compressor 2 copper pipe 1	-
28	Liquid soleoid valve (Option)	YE32070500000
29	Compressor 2 copper pipe 2	-

\* means possible broken parts. \*\* means easy broken parts. Spare backup is suggested.

Please confirm the version number of the manual before you order to ensure the stock number and the parts are consistent.



### 41. General Assembly Diagram (SIC-112W-R2)



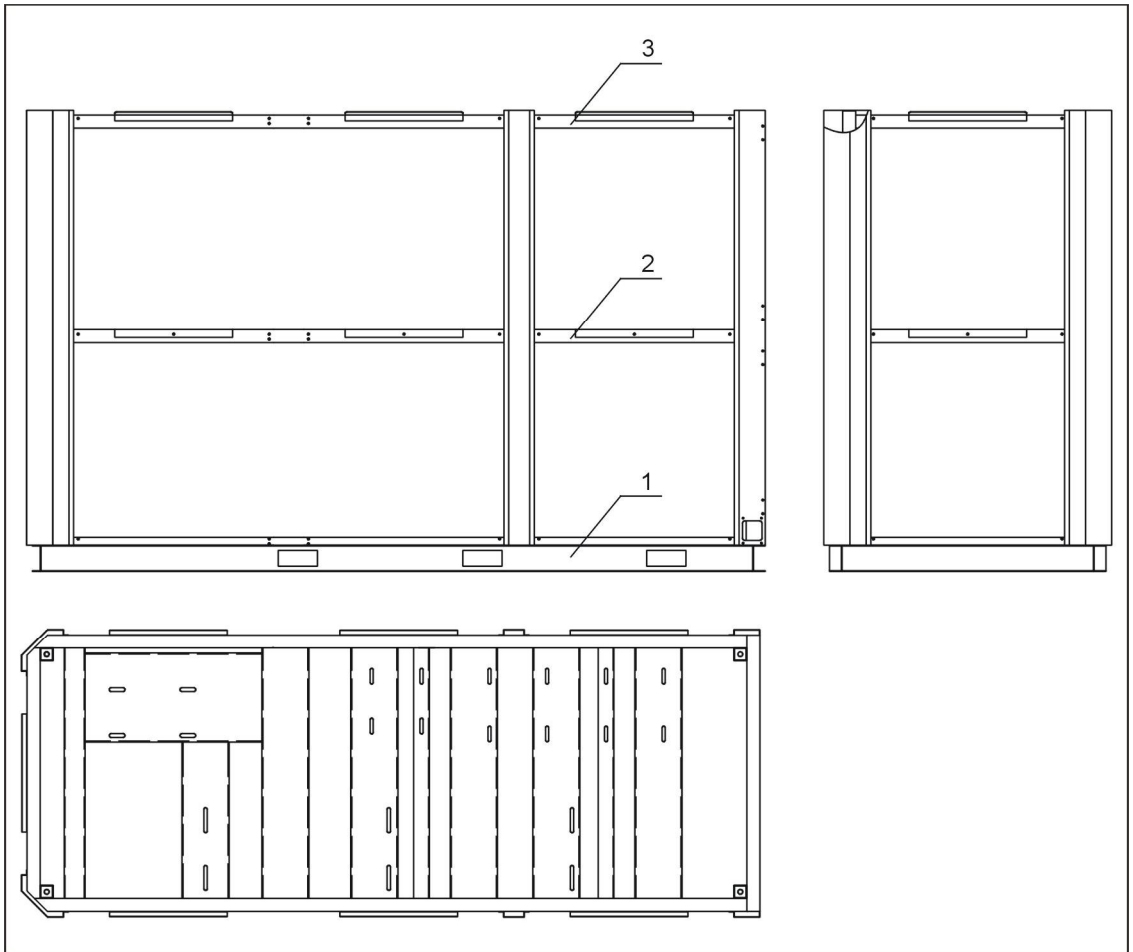
Note: For details of the numbers in the parts drawing, please refer to the part list in 42

## 42. General Assembly Diagram Parts List (SIC-112W-R2)

No.	Name	Parts No.
1	Line jig fixed plate	-
2	Rack	-
3	Cross socket head cap screw GB/T-818 M6x30-longzine	YW63063000000
4	Left front stand column	-
5	Side plate 3	-
6	Middle stand column	-
7	Aluminum square handle	BW20012000040
8	Water tank body	-
9	Water tank cover	-
10	Movable stand column	-
11	Ringbolt M16	YW09001600000
12	Liquid level indicator base (Option)	YW20000000400
13	Liquid level indicator screw(Option)	BH12060700110
14	Liquid level indicator STM-310(Option)	BH12030000010
15	Glass tube(Option)	YW70963000000
16	Liquid level indicator shelter(Option)	BL90006800020
17	Upper plate	-
18	High pressure gauge	YW85005500000
19	Low pressure gauge	YW85003500000
20	Water pressure gauge	YW85001000100
21	Gauge plate	-
22	Door lock of electrical cabinet	YW00717100000
23	Lower plate	-
24	Inner hexagon cylindrical screw GB/T70.1 M6x60-12.9-longzine	YW61066000000
25	Rear plate	-
26	Back stand column	-
27	Side plate 2	-
28	Water system	-
29	Rear top plate	-
30	Refrigerant system	-
31	Front top plate	-
32	Side plate 1	-
33	Base plate of electrical cabinet	-
34	Control cabinet	-
35	Right front stand column	-

Please confirm the version number of the manual before you order to ensure the stock number and the parts are consistent.

### 43. Rack Diagram (SIC-112W-R2)



Note: For details of the numbers in the parts drawing, please refer to the part list in 44

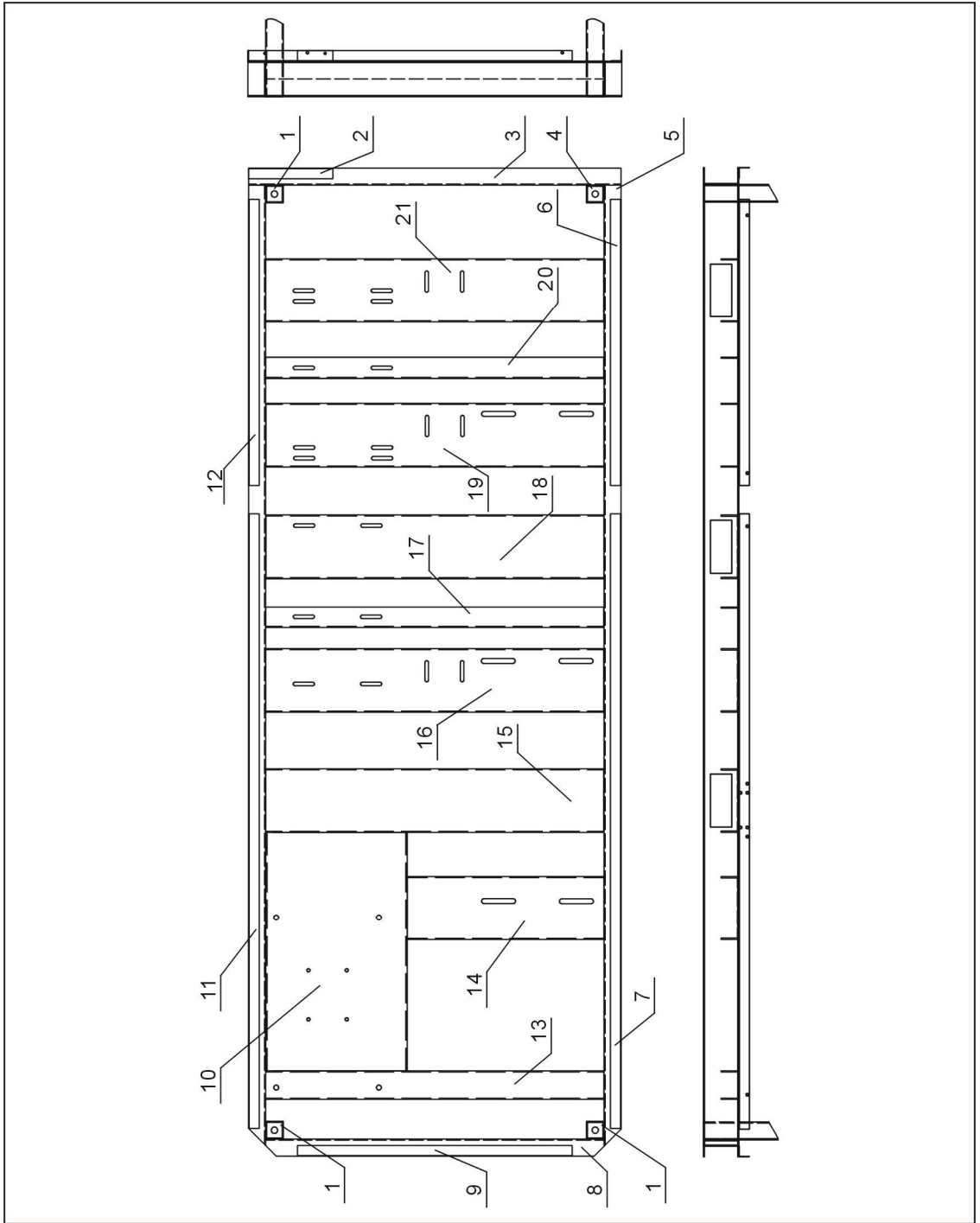
### 44. Rack Parts List (SIC-112W-R2)

No.	Name	Parts No.	No.	Name	Parts No.
1	Rack first layer	-	3	Rack third layer	-
2	Rack second layer	-			-

\* means possible broken parts. \*\* means easy broken parts. Spare backup is suggested.

Please confirm the version number of the manual before you order to ensure the stock number and the parts are consistent.

### 45. Rack Diagram 1(SIC-112W-R2)



Note: For details of the numbers in the parts drawing, please refer to the part list in 46

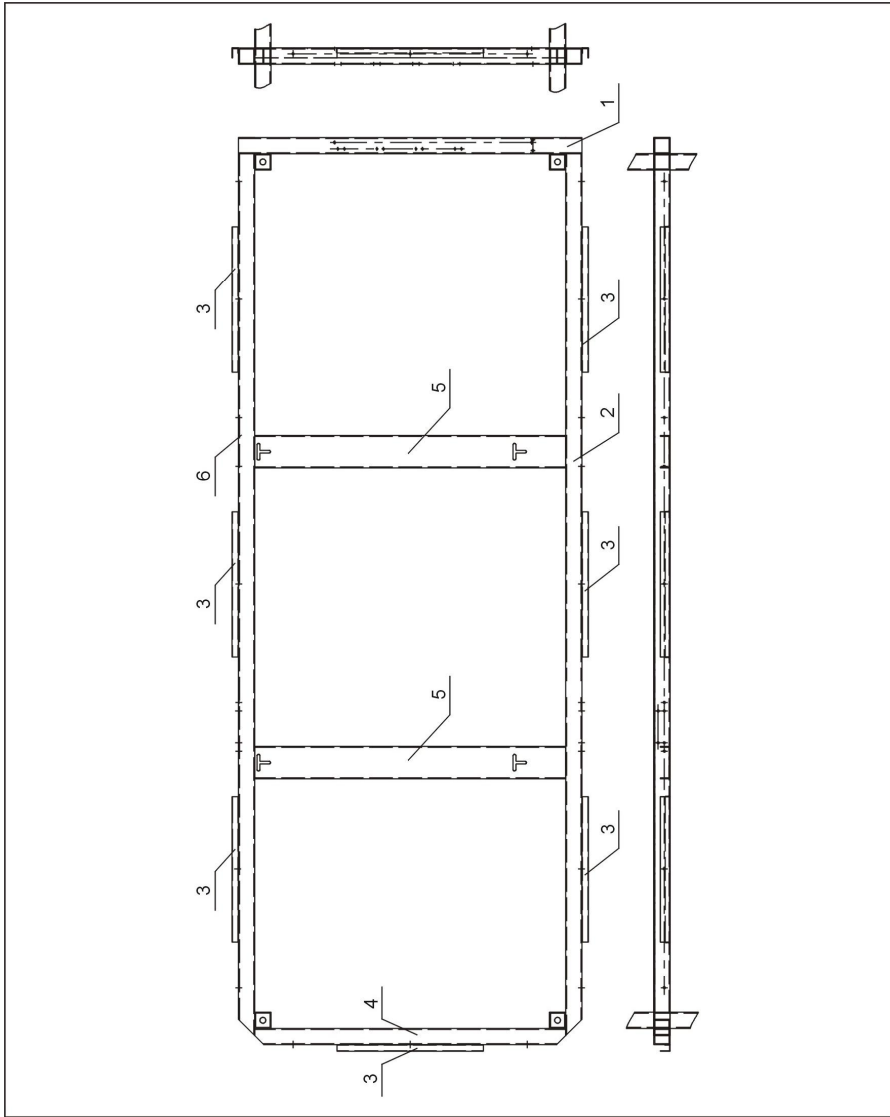
#### 46. Rack 1 Parts List (SIC-112W-R2)

No.	Name	Parts No.	No.	Name	Parts No.
1	Brace 2	-	12	Baffle 2	-
2	Baffle 6	-	13	Base beam 1	-
3	Base U-steel 3		14	Base beam 2	-
4	Brace 1	-	15	Base beam 3	-
5	Base U-stell 1	-	16	Base beam 4	-
6	Baffle 1	-	17	Base steel angle 1	-
7	Baffle 3	-	18	Base beam 5	-
8	Base U-steel 2	-	19	Base beam 6	-
9	Baffle 5	-	20	Base steel angle 2	-
10	Base beam 8	-	21	Base beam 7	-
11	Baffle 4	-			-

\* means possible broken parts. \*\* means easy broken parts. Spare backup is suggested.

Please confirm the version number of the manual before you order to ensure the stock number and the parts are consistent.

### 47. Rack Diagram 2(SIC-112W-R2)



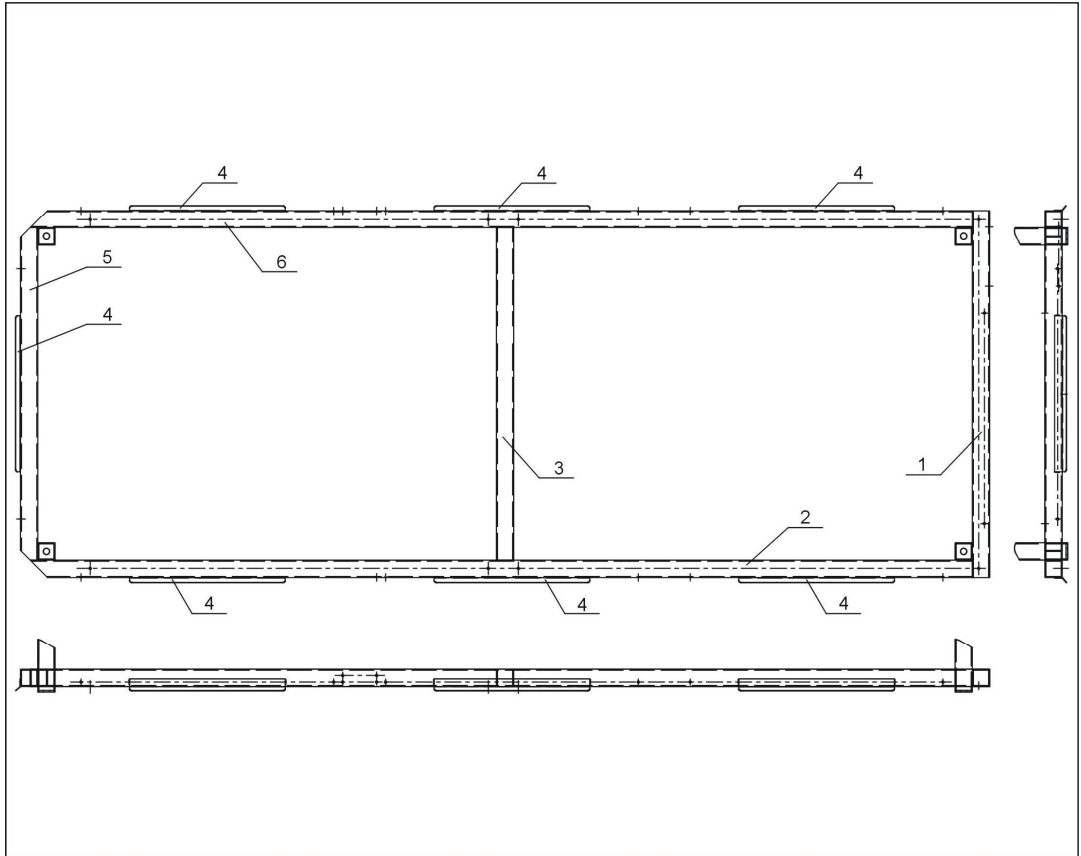
Note: For details of the numbers in the parts drawing, please refer to the part list in 48

### 48. Rack 2 Parts List (SIC-112W-R2)

No.	Name	Parts No.	No.	Name	Parts No.
1	Middle beam 1	-	4	Fixed block	-
2	Middle beam 2	-	5	Middle beam 3	-
3	Fixed block	-	6	Middle beam 4	-

Please confirm the version number of the manual before you order to ensure the stock number and the parts are consistent.

### 49. Rack Diagram 3(SIC-112W-R2)



Note: For details of the numbers in the parts drawing, please refer to the part list in 50

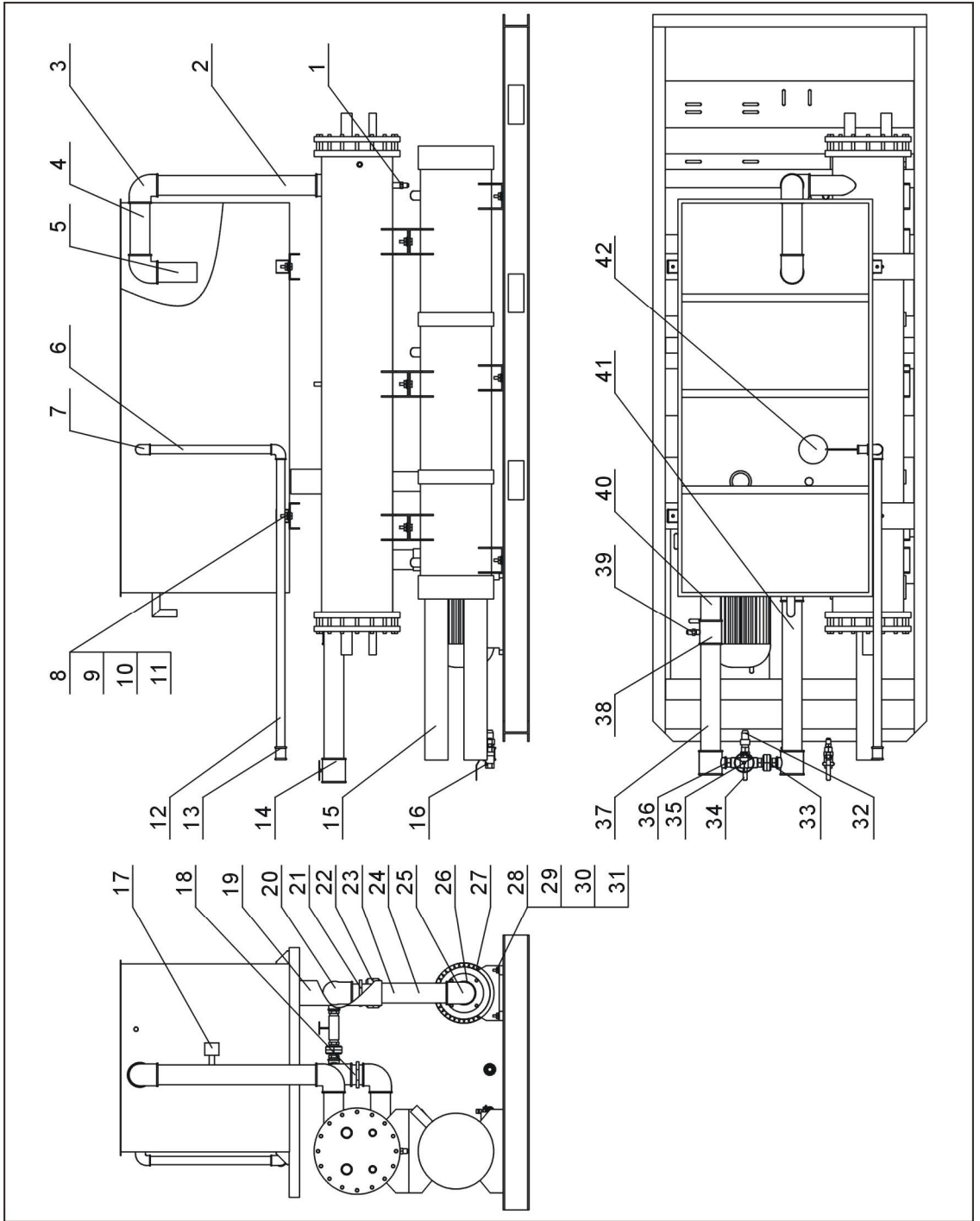
### 50. Rack 3 Parts List (SIC-112W-R2)

No.	Name	Parts No.	No.	Name	Parts No.
1	Top beam 1	-	4	Hanging strip	-
2	Top beam 2	-	5	Top beam 4	-
3	Top beam 3	-	6	Top beam 5	-

\* means possible broken parts. \*\* means easy broken parts. Spare backup is suggested.

Please confirm the version number of the manual before you order to ensure the stock number and the parts are consistent.

### 51. Water System Diagram (SIC-112W-R2)



Note: For details of the numbers in the parts drawing, please refer to the part list in 52

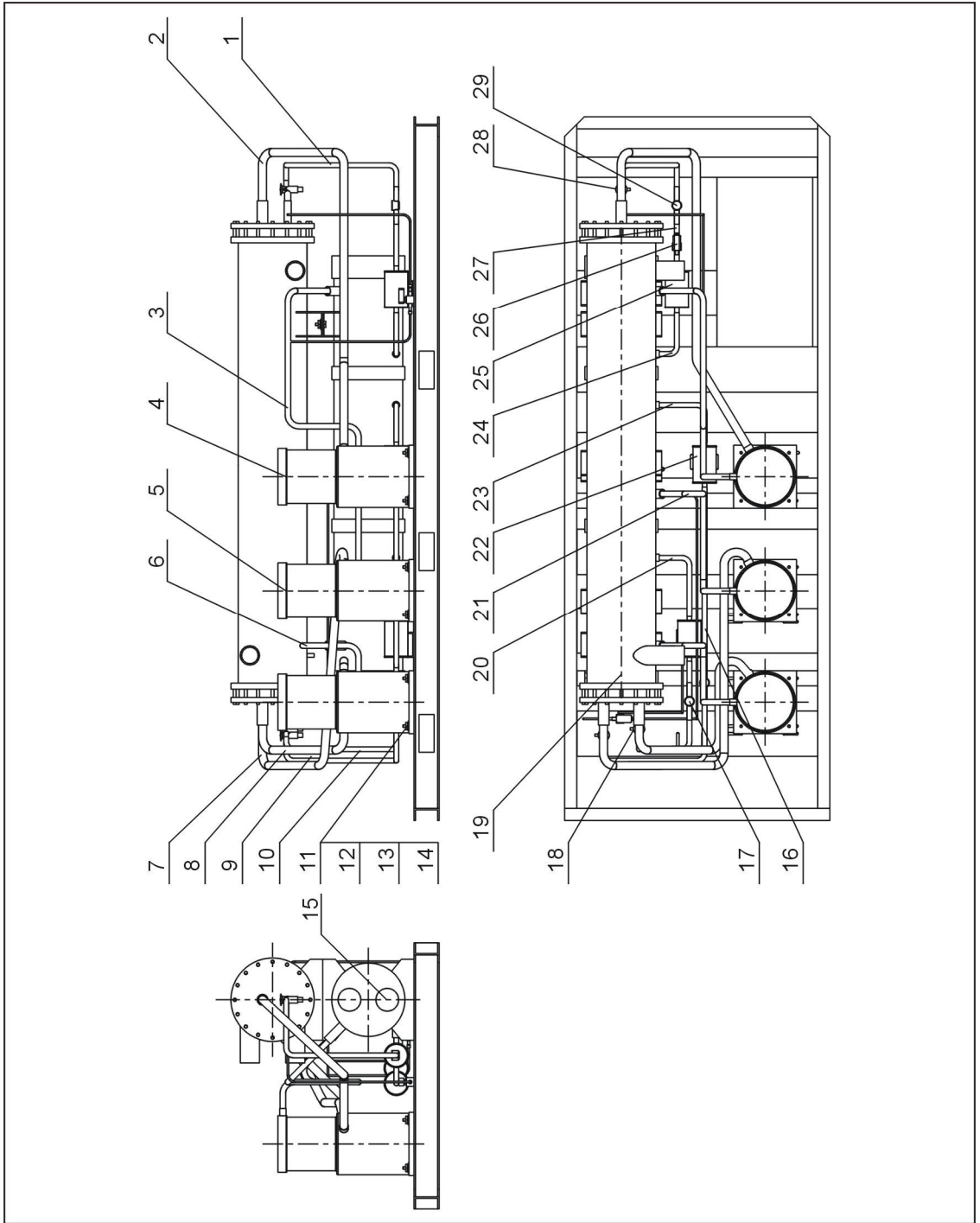


## 52. Water System Parts List (SIC-112W-R2)

No.	Name	Parts No.
1	Copper inserted core 1/2"	BH12121200210
2	Galvanized steel pipe 1	-
3	Pipe elbow 2-1/2"	YW53002500000
4	Galvanized steel pipe 2	-
5	Galvanized steel pipe 3	-
6	Galvanized steel pipe 4	-
7	Pipe elbow 1"	YW53100000000
8	Hexagon screw bolt GB/T5783 M8x30-8.8-longzine	YW60083000200
9	Hexagon nut GB/T6170 M8-longzine	YW64080600000
10	Standard spring washer GB/T93 8-longzine	YW65008000100
11	Big gasket C GB/T968 (8.4x24x2) -longzine	YW66082200100
12	Galvanized steel pipe 5	-
13	Pipe direct connection 1"	YW51000100000
14	Pipe T-joint 2-1/2" x1"	YW52250100000
15	Galvanized steel pipe 6	-
16	Copper globe valve 1/2"	YW50010200100
17	Flow switch 1" (Option)	YW85005000000
18	Pipe inner joint 2-1/2"	YW50002500100
19	Black rubber pipe 2"	YR60600300000
20	Pipe elbow 2" x2-1/2"	YW53250200000
21	Pipe inner joint"	YW50000200000
22	Pipe loose joint 2"	YW54000200000
23	Galvanized steel pipe 7	-
24	Galvanized steel pipe 8	-
25	Pipe elbow 2"	YW53000200100
26	Galvanized steel pipe 9	-
27	Pump	-
28	Hexagon screw bolt GB/T5783 M10x40-8.8-longzine	YW60104000100
29	Hexagon nut GB/T6170 M10-longzine	YW64001000100
30	Standard spring washer GB/T93 10-longzine	YW65010000000
31	Big gasket A GB/T96 10(10.5x30x2.5) -longzine	YW66103200000
32	Copper inserted core 1"	BH12012500010
33	Pipe loose joint 1"	YW54000100000
34	Copper globe valve 1"	YW50010000000
35	Sluice valve 1"	YW50000101000
36	Pipe inner joint 1"	YW50000100000
37	Galvanized steel pipe 10	-
38	Pipe T-joint 2-1/2" x1/2"	YW52251200000
39	Copper inserted core1/2"PTx1/4"H	BH12141200010
40	Galvanized steel pipe 11	-
41	Galvanized steel pipe 12	-
42	Floating ball valve 1"	YW59010000000

Please confirm the version number of the manual before you order to ensure the stock number and the parts are consistent.

### 53. Refrigerant System Diagram (SIC-112W-R2)



Note: For details of the numbers in the parts drawing, please refer to the part list in 54

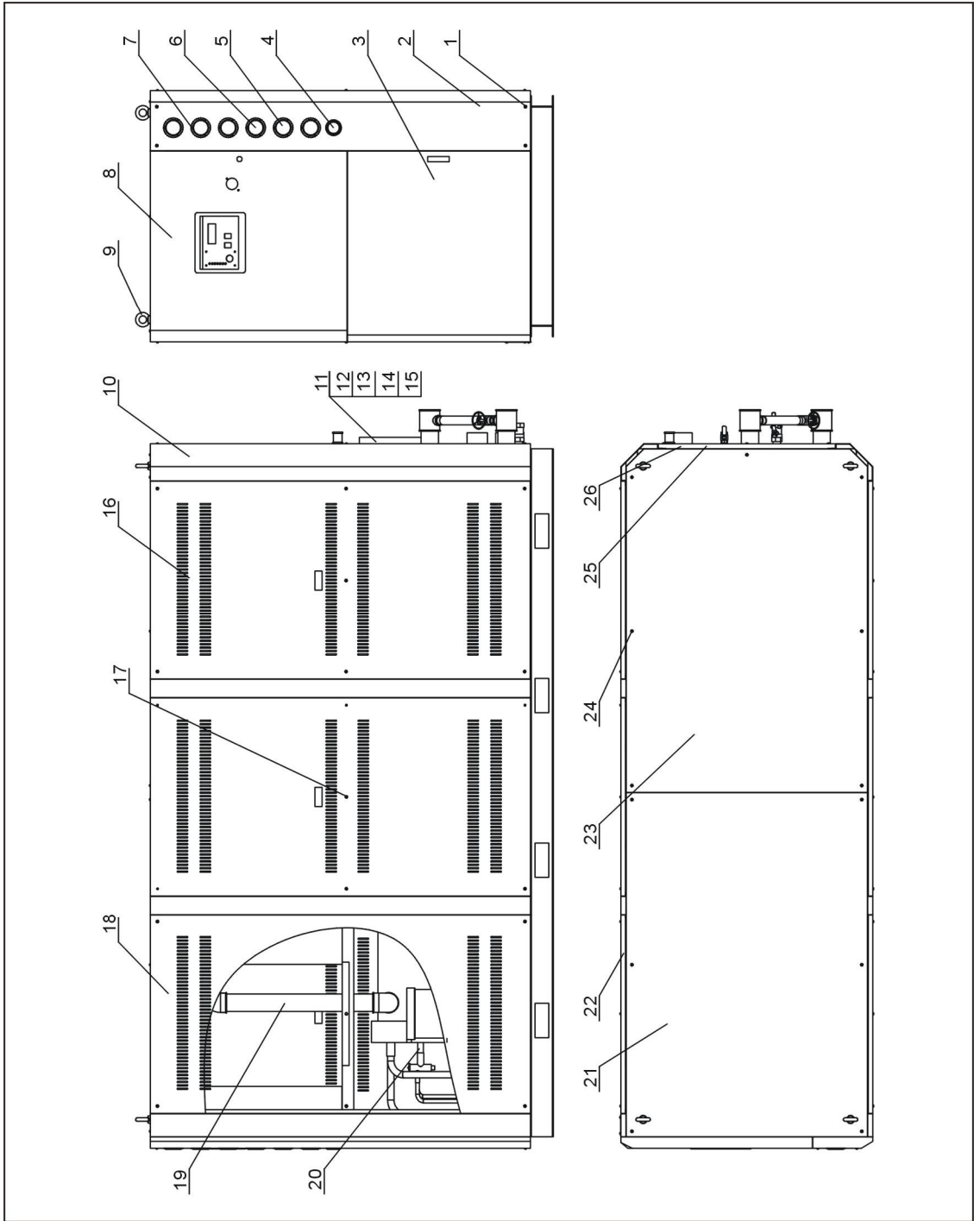
#### 54. Refrigerant Sytem Parts List (SIC-112W-R2)

No.	Name	Parts No.
1	Liquid pipe 3 of compressor 3	-
2	Air-return pipe of compressor 3	-
3	Exhaust pipe of compressor 3	-
4	Compressor 10HP	-
5	Compressor 15HP	-
6	Exhaust pipe of compressor 1	-
7	Air-return pipe of compressor 2	-
8	Air-return pipe of compressor 1	-
9	Liquid pipe 3 of compressor 2	-
10	Liquid pipe 2 of compressor 1	-
11	Hexagon screw bolt GB/T5783 M10x40-8.8-longzine	YW60104000100
12	Hexagon nut GB/T6170 M10-longzine	YW64001000100
13	Standard spring washer GB/T93 10-longzine	YW65010000000
14	Big gasket A GB/T96 10(10.5x30x2.5) -longzine	YW66103200000
15	Condenser	-
16	Liquid pipe 2 of compressor 2	-
17	Refrigerant indicator HMI-1TT5	YW85001500100
18	Thermal expansion valve	YW85001300000
19	Evaporator	-
20	Liquid pipe 1 of compressor 1	-
21	Exhaust pipe of compressor 2	-
22	Dryer filter EK-307S	YW85030700000
23	Liquid pipe 1 of compressor 2	-
24	Liquid pipe 1 of compressor 3	-
25	Dryer filter EK-164S	YW85016400100
26	Solenoid valve of liquid valve (Option)	YE32070500000
27	Liquid pipe 2 of compressor 3	-
28	Thermal expansion valve	YW85712700000
29	Refrigerant indicator HMI-1TT4(Option)	YW85001400000

\* means possible broken parts. \*\* means easy broken parts. Spare backup is suggested.

Please confirm the version number of the manual before you order to ensure the stock number and the parts are consistent.

### 55. General Assembly Diagram (SIC-126W-R2)



Note: For details of the numbers in the parts drawing, please refer to the part list in 56

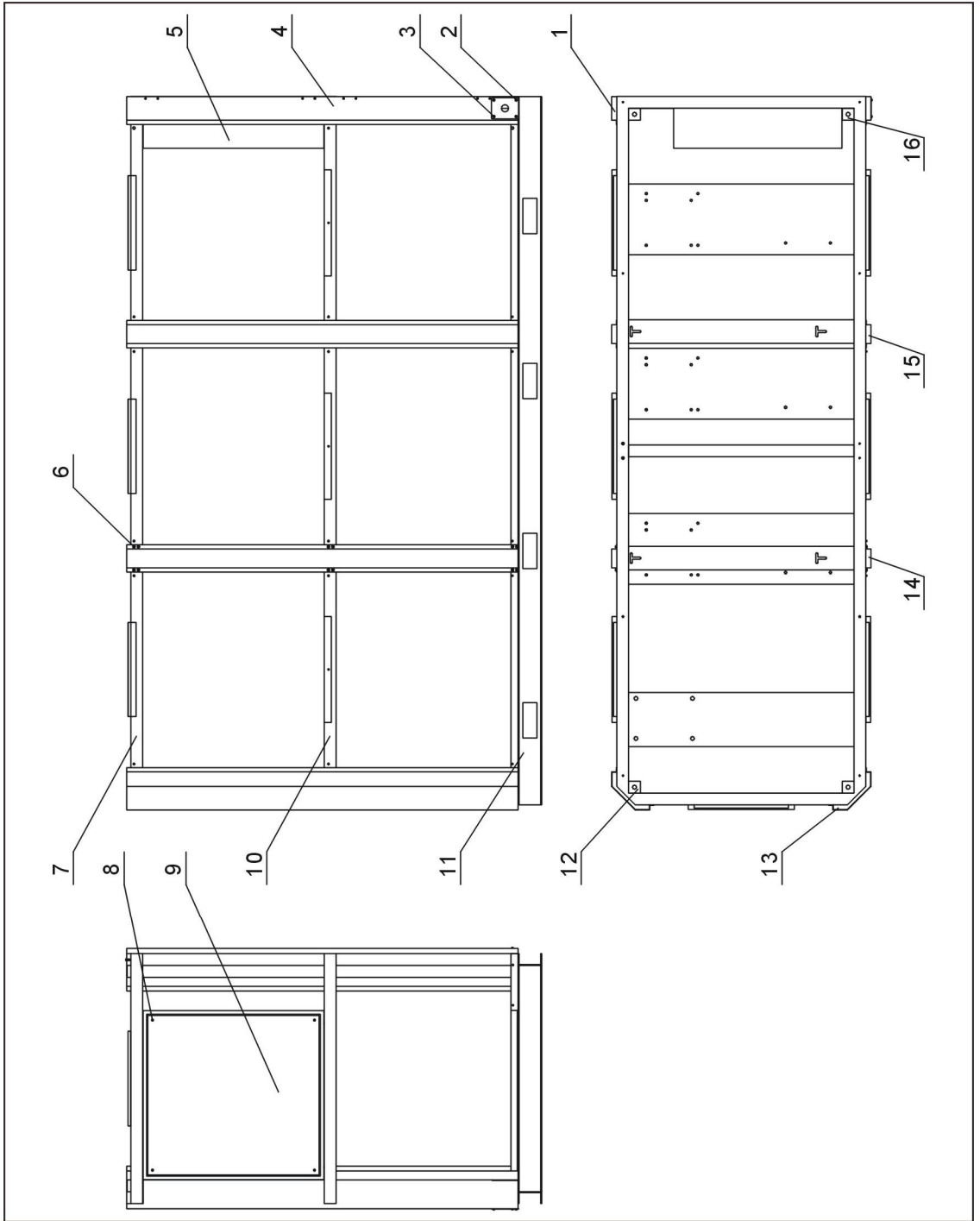
## 56. General Assembly Diagram Parts List (SIC-126W-R2)

No.	Name	Parts No.
1	Inner hexagon cylindrical screw GB/T70.1 M6x60-12.9-longzine	YW61066000000
2	Gauge plate	-
3	Lower plate	-
4	Pressure gauge 0~10kg	YW85001000100
5	Low pressure gauge 0~35kg	YW85003500000
6	Low pressure gauge 0~50kg	YW85005500000
7	Cross recessed raised countersunk head screw JIS1111 M4x5-longzine	YW62040500000
8	Upper plate	-
9	Ringbolt M16	YW09001600000
10	Rack	-
11	Liquid level indicator base (Option)	YW20000000400
12	Liquid level indicator screw(Option)	BH12060700110
13	Liquid level indicator STM-310(Option)	BH12030000010
14	Glass tube(Option)	YW70963000000
15	Liquid level indicator shelter(Option)	BL90006800020
16	Cross recessed raised countersunk head screw JIS1111 M6x10-longzine	YW62061000000
17	Side plate 1	-
18	Side plate 2	-
19	Chilled water system	-
20	Refrigerant system	-
21	Front top plate	-
22	Side plate 3	-
23	Back top plate	-
24	Cross recessed raised countersunk head screw JIS1111 M6x30-longzine	YW62063000000
25	Rear plate	-
26	Rear plate 2	-

\*\* means possible broken parts. \*\* means easy broken parts. Spare backup is suggested.

Please confirm the version number of the manual before you order to ensure the stock number and the parts are consistent.

### 57. Rack Diagram (SIC-126W-R2)



Note: For details of the numbers in the parts drawing, please refer to the part list in 58

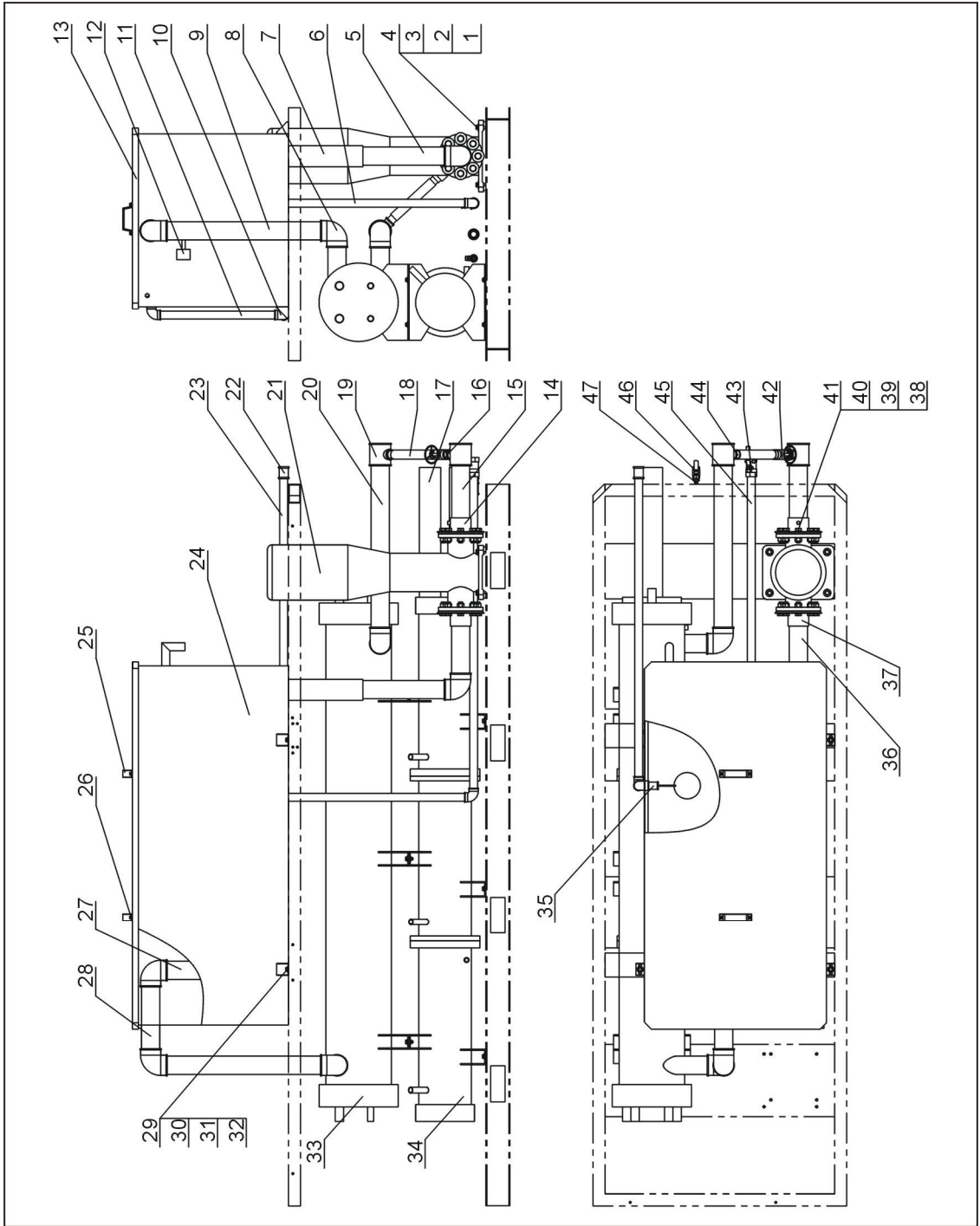
## 58. Rack Parts List (SIC-126W-R2)

No.	Name	Parts No.
1	Right front stand column	-
2	Line jig fixed board	-
3	Cross recessed raised countersunk head screw JIS1111 M5x10-A2-70(SUS)	YW62051000000
4	Left front stand column	-
5	Electrical cabinet	-
6	Cross recessed raised countersunk head screw JIS1111 M6x10-longzine	YW62061000000
7	Rack third layer	-
8	Cross recessed raised countersunk head screw JIS1111 M6x15-longzine	YW62061500000
9	Electrical cabinet base	-
10	Rack second layer	-
11	Rack first layer	-
12	Stand column 1	-
13	Back stand column	-
14	Movable stand column	-
15	Middle stand column	-
16	Stand column 2	-

\* means possible broken parts. \*\* means easy broken parts. Spare backup is suggested.

Please confirm the version number of the manual before you order to ensure the stock number and the parts are consistent.

### 59. Water System Diagram (SIC-126W-R2)



Note: For details of the numbers in the parts drawing, please refer to the part list in 60



## 60. Water System Parts List (SIC-126W-R2)

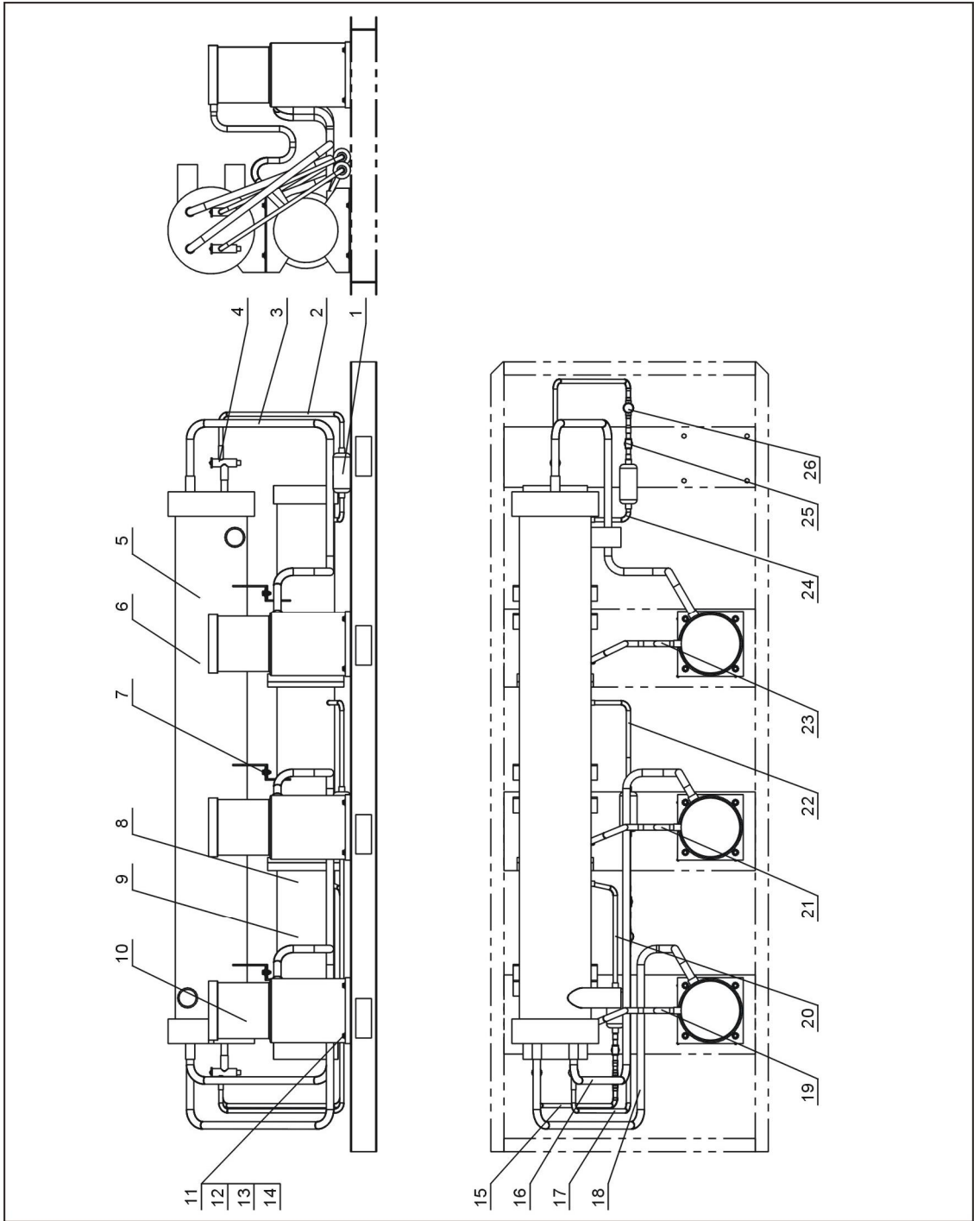
No.	Name	Parts No.
1	Hexagon screw bolt GB/T5783 M10x50-8.8-longzine	YW60105000000
2	Standard spring washer GB/T93 10-longzine	YW65010000000
3	Flat gasket A GB/T97.1 10(11x20x2) -longzine	YW66102000100
4	Hexagon nut GB/T6170 M10-longzine	YW64001000100
5	Water pipe 6	-
6	Water pipe 8	-
7	Black rubber inner diameter 89	YR60390300000
8	Galvanized pipe elbow 2.5"	YW53002500000
9	Water pipe 3	-
10	Galvanized pipe elbow 1"	YW53100000000
11	Water pipe 11	-
12	Flow switch (Option)	YW85005000000
13	Water tank cover	-
14	Water outlet flange	-
15	Water pipe 1	-
16	Galvanized pipe inner joint 1"	YW50000100000
17	Water pipe 13	-
18	Black rubber pipe inner diameter 32	YR60320500000
19	Galvanized pipe T-joint 2.5" x1"	YW52250100000
20	Water pipe 2	-
21	Pump	-
22	Galvanized pipe diret connection 1"	YW51000100000
23	Water pipe 10	-
24	Water tank body	-
25	Square handle	BW20012000040
26	Inner hexagon cylindrical screw GB/T70.1 M6x20-A2-70(SUS)	YW61062000000
27	Water pipe 5	-
28	Water pipe 4	-
29	External hexagonal screw M8x25-longzine 8.8	YW60082500200
30	Standard spring washer GB/T93 8-longzine	YW65008000100
31	Big gasket C GB/T968 (8.4x24x2) -longzine	YW66082200100
32	Hexagon nut GB/T6170 M8-longzine	YW64080600000
33	Evaporator	-
34	Condenser	-
35	Floating ball switch 1"	YW59010000000
36	Water pipe 7	-
37	Water inlet flange	-
38	Hexagon screw bolt GBT5783 M16x45-12.9-longzine	YW60040050000

No.	Name	Parts No.
39	Spring washer M16	YW65016000000
40	Flat gasket A GB/T97.1 16-longzine	YW66163000000
41	Hexagon nut GB/T6170 M16-longzine	YW64001600000
42	Sluice valve 1"	YW50000101000
43	Copper globe valve 1"	YW50010000000
44	Water pipe 12	-
45	Water pipe 9	-
46	Copper globe valve 1/2"	YW50010200100
47	Copper inserted core M16×1/2PT	BH12161200010

\* means possible broken parts. \*\* means easy broken parts. Spare backup is suggested.

Please confirm the version number of the manual before you order to ensure the stock number and the parts are consistent.

### 61. Refrigerant System Diagram (SIC-126W-R2)



Note: For details of the numbers in the parts drawing, please refer to the part list in 62

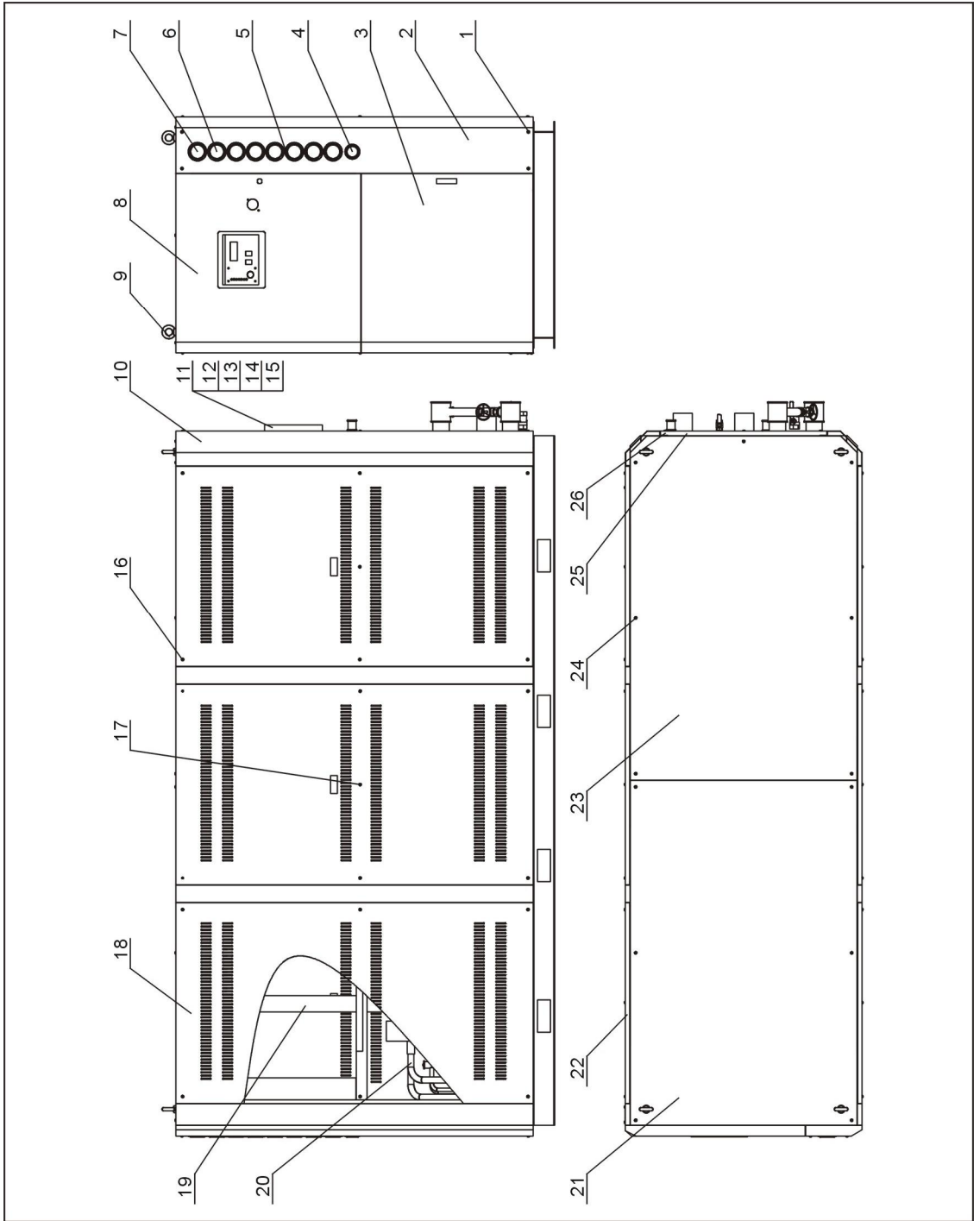
## 62. Refrigerant Sytem Parts List (SIC-126W-R2)

No.	Name	Parts No.
1	Dryer filter	YW85030700000
2	Liquid pipe 2	-
3	Air-return pipe 1	-
4	Expansion valve	-
5	Evaporator	-
6	Evaporator 60Hz	-
7	External hexagonal screw M8x25-longzine 8.8	YW60082500200
8	Condenser	-
9	Condenser 60Hz	-
10	Compressor	-
11	Hexagon screw bolt GB/T5783 M8x50-8.8-longzine	YW60085000000
12	Standard spring washer GB/T93 8-longzine	YW65008000100
13	Flat gasket A GB/T97.1(8.4x16x1.6) -longzine	YW66081600000
14	Hexagon nut GB/T6170 M8-longzine	YW64080600000
15	Liquid pipe 6	-
16	Air-return pipe 2	-
17	Liquid pipe 4	-
18	Air-return pipe 3	-
19	Exhaust piep 1	-
20	Liquid pipe 5	-
21	Air-return pipe 2	-
22	Liquid pipe 3	-
23	Air-return pipe 1	-
24	Liquid pipe 1	-
25	Solenoid valve of liquid pipe (Option)	YE32070500000
26	Refrigerant indicator (Option)	YW85001500100

\* means possible broken parts. \*\* means easy broken parts. Spare backup is suggested.

Please confirm the version number of the manual before you order to ensure the stock number and the parts are consistent.

### 63. General Assembly Diagram (SIC-132W-R2)



Note: For details of the numbers in the parts drawing, please refer to the part list in 64

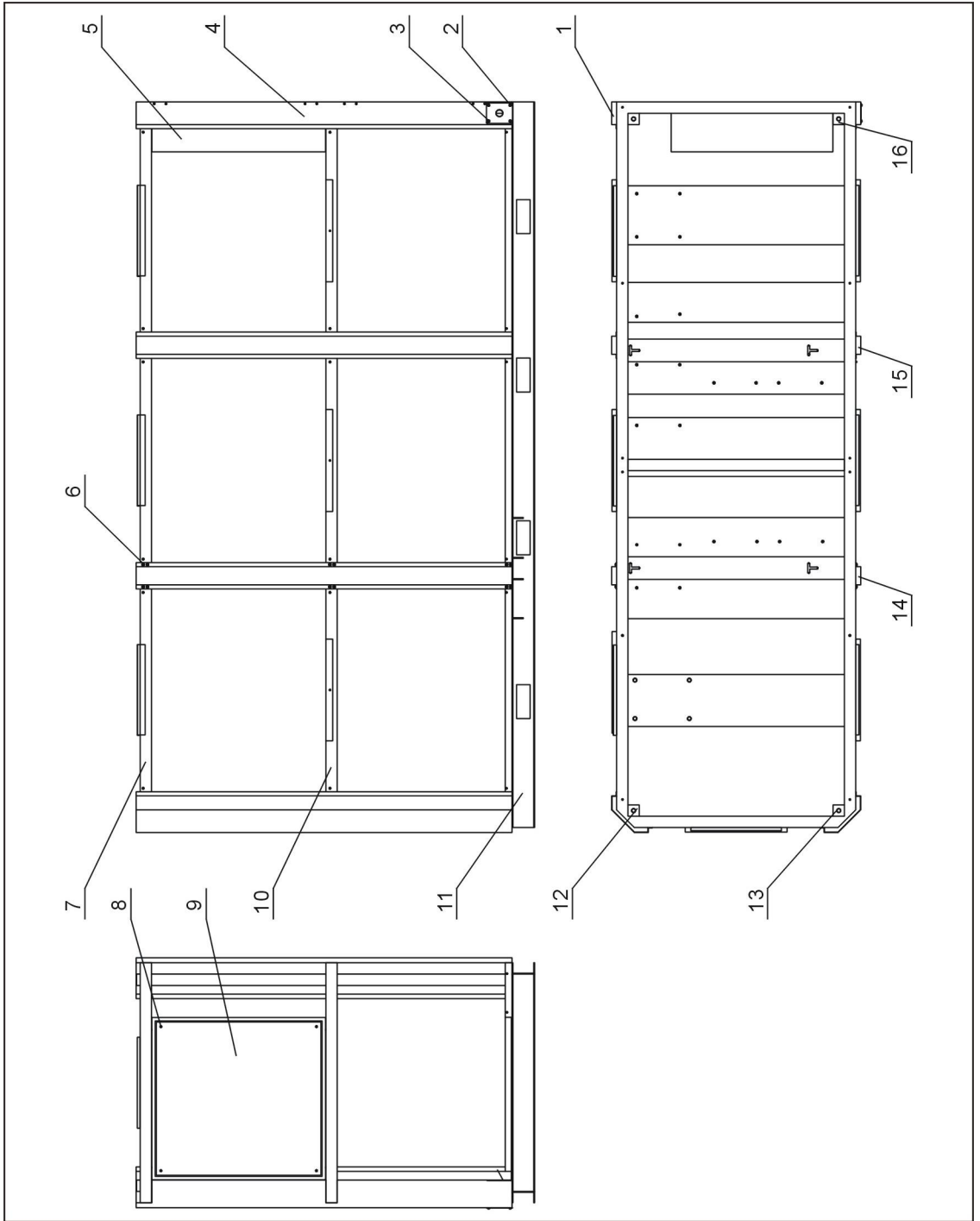
## 64. General Assembly Diagram Parts List (SIC-132W-R2)

No.	Name	Parts No.
1	Inner hexagon cylindrical screw GB/T70.1 M6x60-12.9-longzine	YW61066000000
2	Gauge plate	-
3	Lower plate	-
4	Pressure gauge 0~10kg	YW85001000100
5	Cross recessed raised countersunk head screw JIS1111 M4x5-longzine	YW62040500000
6	Low pressure gauge 0~35kg	YW85003500000
7	Low pressure gauge 0~50kg	YW85005500000
8	Upper plate	-
9	Ringbolt M16	YW09001600000
10	Rack	-
11	Liquid level indicator base (Opiton)	YW20000000400
12	Liquid level indicator screw(Opiton)	BH12060700110
13	Liquid level indicator STM-310(Opiton)	BH12030000010
14	Glass tube(Opiton)	YW70963000000
15	Liquid level indicator shelter(Opiton)	BL90006800020
16	Cross recessed raised countersunk head screw JIS1111 M6x10-longzine	YW62061000000
17	Side plate 1	-
18	Side plate 2	-
19	Chilled water system	-
20	Refrigerant system	-
21	Front top plate	-
22	Side plate 3	-
23	Back top plate	-
24	Cross recessed raised countersunk head screw JIS1111 M6x30-longzine	YW62063000000
25	Rear plate	-
26	Rear plate 2	-

\*\* means possible broken parts. \*\* means easy broken parts. Spare backup is suggested.

Please confirm the version number of the manual before you order to ensure the stock number and the parts are consistent.

### 65. Rack Diagram (SIC-132W-R2)



Note: For details of the numbers in the parts drawing, please refer to the part list in 66

## 66. Rack Parts List (SIC-132W-R2)

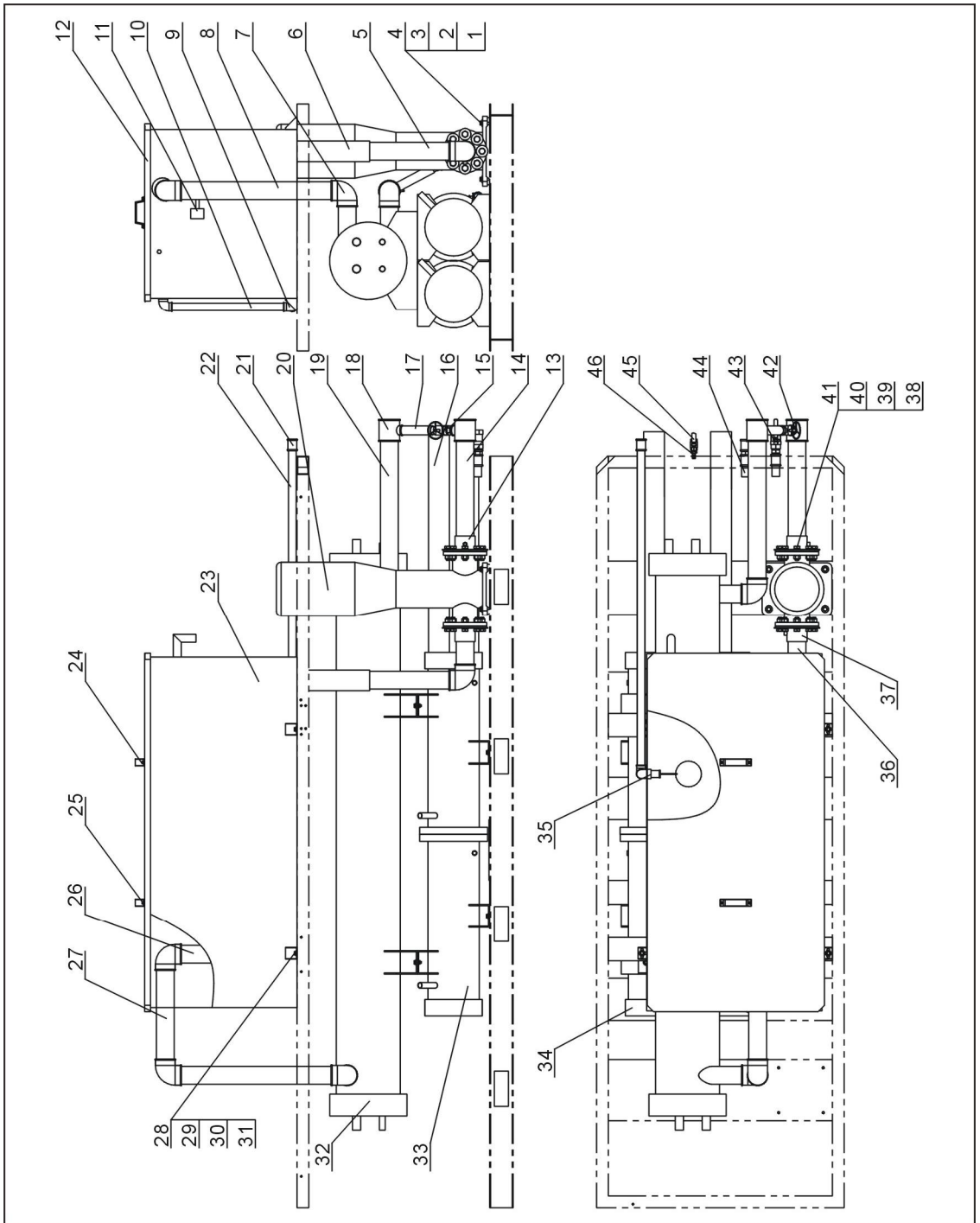
No.	Name	Parts No.
1	Right front stand column	-
2	Line jig fixed board	-
3	Cross recessed raised countersunk head screw JIS1111 M5x10-A2-70(SUS)	YW62051000000
4	Left front stand column	-
5	Electrical cabinet	-
6	Cross recessed raised countersunk head screw JIS1111 M6x10-longzine	YW62061000000
7	Rack third layer	-
8	Cross recessed raised countersunk head screw JIS1111 M6x15-longzine	YW62061500000
9	Base plate of electric cabinet	-
10	Rack second layer	-
11	Rack first layer	-
12	Stand column 1	-
13	Back stand column	-
14	Movable stand column	-
15	Middle stand column	-
16	Stand column 2	-

\* means possible broken parts. \*\* means easy broken parts. Spare backup is suggested.

Please confirm the version number of the manual before you order to ensure the stock number and the parts are consistent.



### 67. Water System Diagram (SIC-132W-R2)



Note: For details of the numbers in the parts drawing, please refer to the part list in 68

## 68. Water System Parts List (SIC-132W-R2)

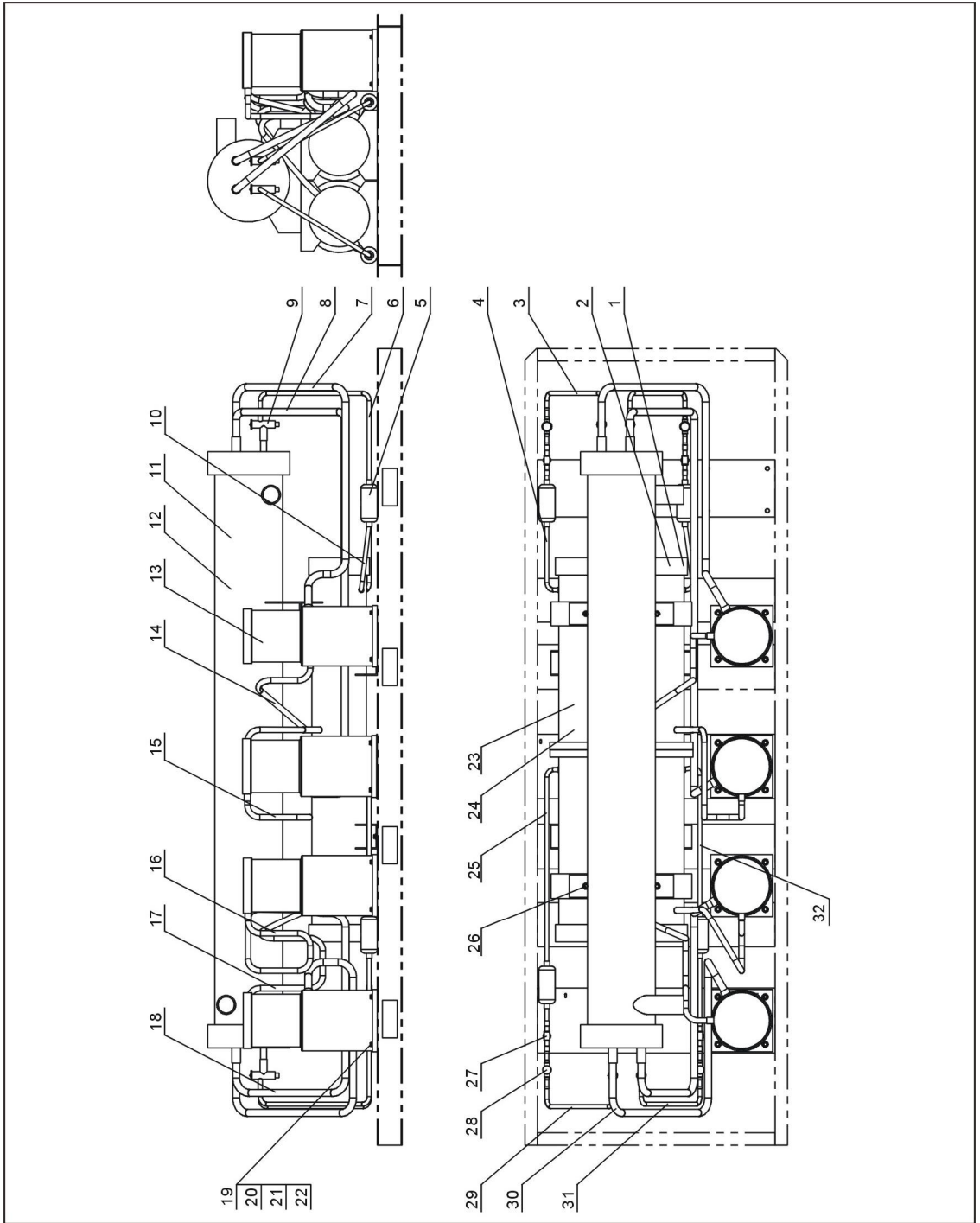
No.	Name	Parts No.
1	Hexagon screw bolt GB/T5783 M10x50-8.8-longzine	YW60105000000
2	Standard spring washer GB/T93 10-longzine	YW65010000000
3	Flat gasket A GB/T97.1 10(11x20x2) -longzine	YW66102000100
4	Hexagon nut GB/T6170 M10-longzine	YW64001000100
5	Water pipe 6	-
6	Inner diameter of black rubber pipe 89	YR60390300000
7	Galvanized pipe elbow 2.5"	YW53002500000
8	Water pipe 3	-
9	Galvanized pipe elnow 1"	YW53100000000
10	Water pipe 9	-
11	Water tank cover	-
12	Flow switch (Opiton)	YW85005000000
13	Water outlet flange	-
14	Water pipe 1	-
15	Galvanized pipe inner joint 1"	YW50000100000
16	Water pipe 11	-
17	Inner diameter of black rubber pipe 32	YR60320500000
18	Galvanized pipe T-joint 2.5" ×1"	YW52250100000
19	Water pipe 2	-
20	Pump	-
21	Direct connection of galvanized pipe 1"	YW51000100000
22	Water pipe 8	-
23	Water tank body	-
24	Square handle	BW20012000040
25	Inner hexagon cylindrical screw GB/T70.1 M6x20-A2-70(SUS)	YW61062000000
26	Water pipe 5	-
27	Water pipe 4	-
28	External hexagonal screw M8x25-longzine 8.8	YW60082500200
29	Standard spring washer GB/T93 8-longzine	YW65008000100
30	Big gasket C GB/T968 (8.4x24x2) -longzine	YW66082200100
31	Hexagon nut GB/T6170 M8-longzine	YW64080600000
32	Evaporator	-
33	Condenser 1	-
34	Condenser 2	-
35	Floating ball switch 1"	YW59010000000
36	Waer pipe 7	-
37	Water inlet flange	-
No.	Name	Parts No.

38	Hexagon screw bolt GBT5783 M16x45-12.9-longzine	YW60040050000
39	Spring washer M16	YW65016000000
40	Flat gasket A GB/T97.1 16-longzine	YW66163000000
41	Hexagon nut GB/T6170 M16-longzine	YW64001600000
42	Sluice valve 1"	YW50000101000
43	Copper globe valve1"	YW50010000000
44	Water pipe 10	-
45	Copper globe valve 1/2"	YW50010200100
46	Copper inserted core M16×1/2PT	BH12161200010

\* means possible broken parts. \*\* means easy broken parts. Spare backup is suggested.

Please confirm the version number of the manual before you order to ensure the stock number and the parts are consistent.

### 69. Refrigerant System Diagram (SIC-132W-R2)



Note: For details of the numbers in the parts drawing, please refer to the part list in 70

## 70. Refrigerant Sytem Parts List (SIC-132W-R2)

No.	Name	Parts No.
1	Condenser 2	-
2	Condenser 2 60Hz	-
3	Liquid pipe 2	-
4	Liquid pipe 1	-
5	Dryer filter	YW85016500100
6	Liquid pipe 4	-
7	Air-return pipe 1	-
8	Air-return pipe 2	-
9	Expansion valve	-
10	Liquid pipe 3	-
11	Evaporator	-
12	Evaporator 60Hz	-
13	Compressor	-
14	Exhaust pipe1	-
15	Exhaust pipe 2	-
16	Exhaust pipe 3	-
17	Exhaust pipe 4	-
18	Air-return pipe 3	-
19	Hexagon screw bolt GB/T5783 M8x50-8.8-longzine	YW60085000000
20	Standard spring washer GB/T93 8-longzine	YW65008000100
21	Flat gasket A GB/T97.1(8.4x16x1.6) -longzine	YW66081600000
22	Hexagon nut GB/T6170 M8-longzine	YW64080600000
23	Condenser 1	-
24	Condenser 1 60Hz	-
25	Liquid pipe 7	-
26	External hexagonal screw M8x25-longzine 8.8	YW60082500200
27	Liquid pipe solenoid valve (Option)	YE32070500000
28	Refrigerant indicator(Option)	YW85001500100
29	Liquid pipe 8	-
30	Air-return pipe 4	-
31	Liquid pipe 6	-
32	Liquid pipe 5	-

\* means possible broken parts. \*\* means easy broken parts. Spare backup is suggested.

Please confirm the version number of the manual before you order to ensure the stock number and the parts are consistent.