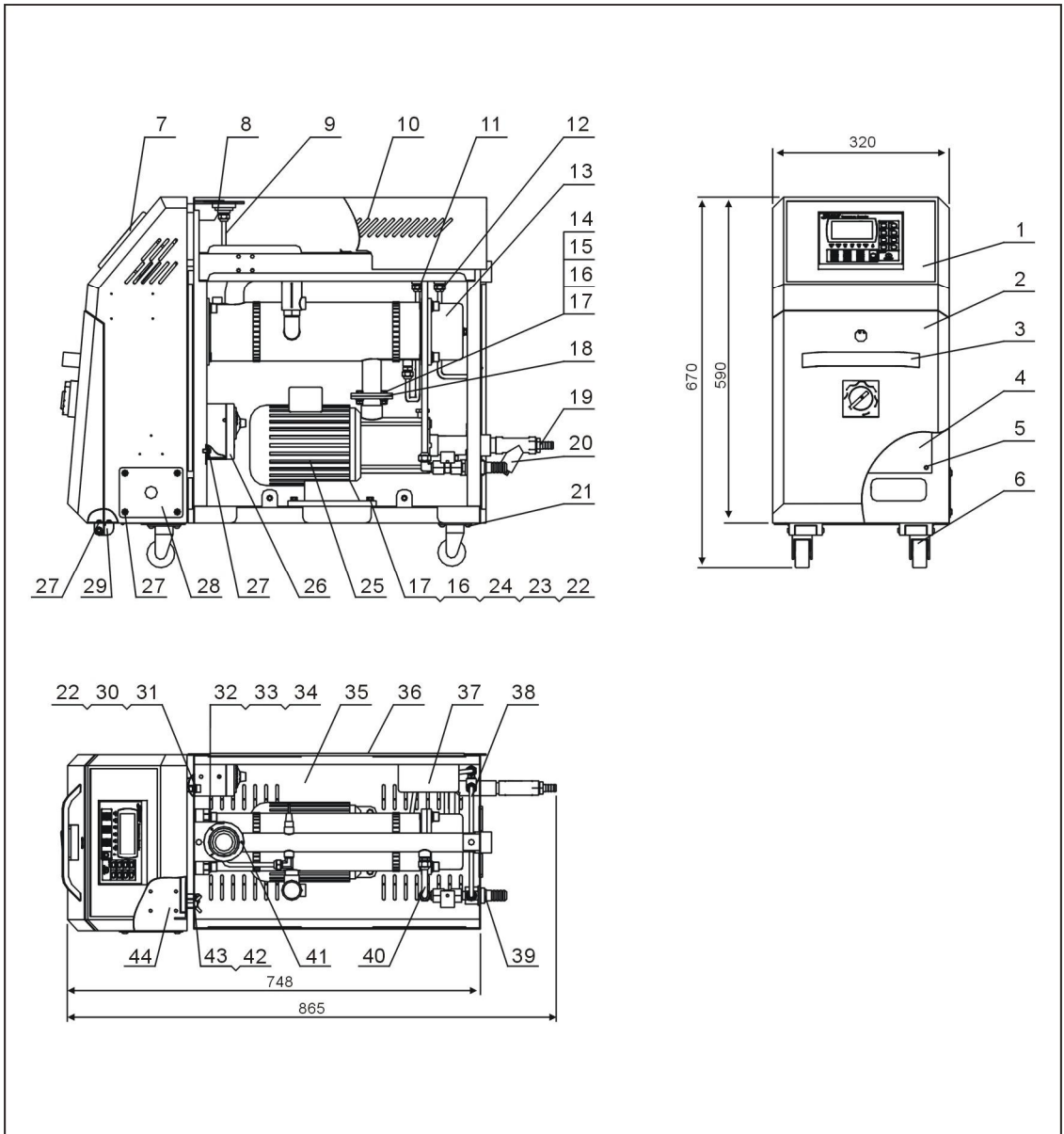


2.2 Assembly Drawing

2.2.1 Assembly Drawing (STM-607WF)



Remarks: Please refer to material list 2.2.2 for specific explanation of the Arabic numbers in parts drawing.

Picture 2-2: Assembly Drawing (STM-607WF)

2.2.2 Parts List (STM-607WF)

Table 2-1: Parts List (STM-607WF)

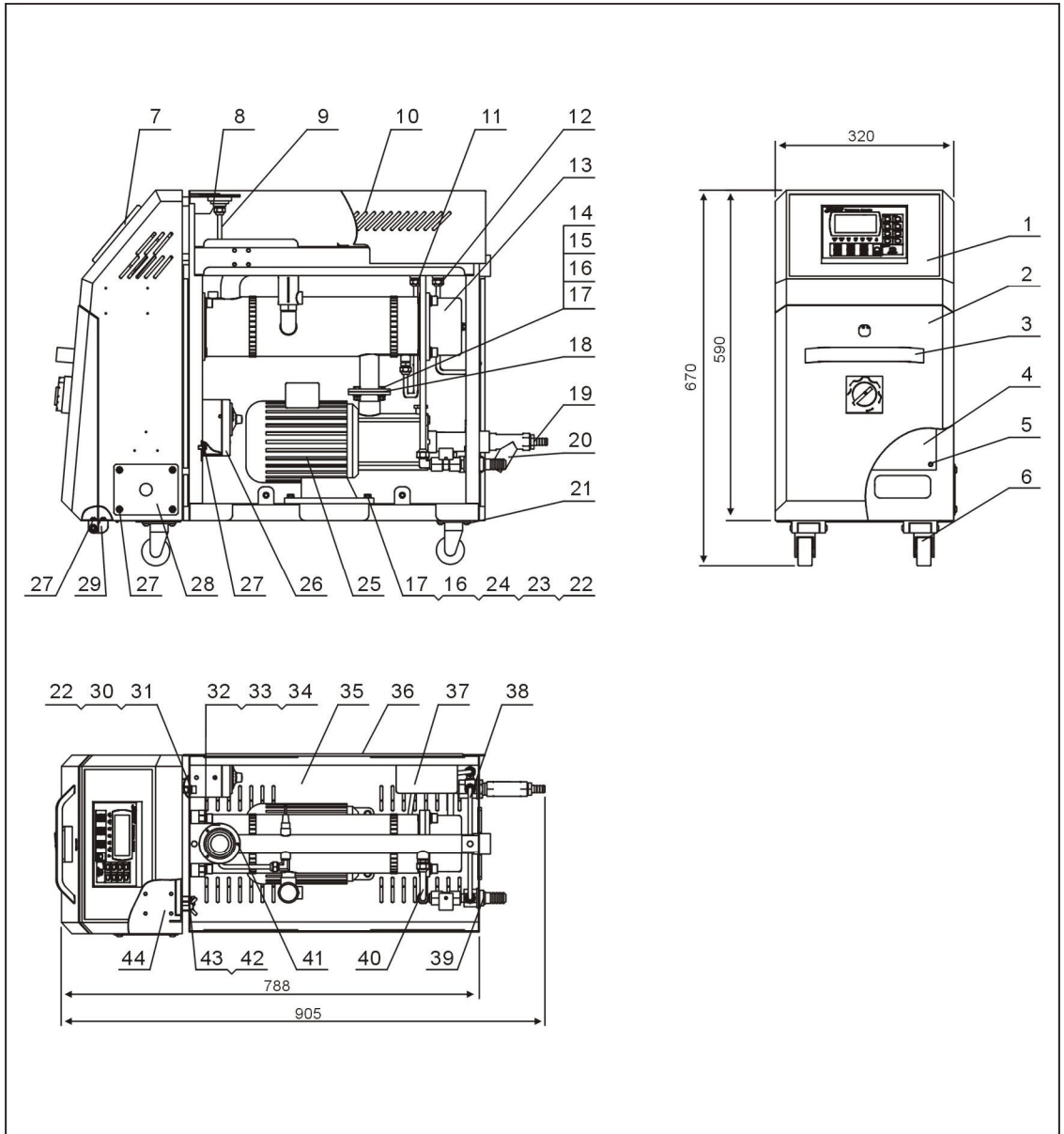
No.	Name	Part No.	No.	Name	Part No.
1	Control box	-	23	Flat washer 6 × 18 × 1.0	YW66061800000
2	Door plank	-	24	Hexagon head screw M6 × 25	YW60062500000
3	Aluminum handle 6609	YW20660900100	25	Pump joint assembly	Refer to Picture 2-9
4	Base plate of control box	-	26	EGO assembly	BH90115000050
5	Thick head screw M6 × 20	YW63062000000	27	Lentil-headed screw M5 × 10	YW62051000100
6	Castor 2"	YW03000200000	28	Line clamp fixing plate	-
7	HANYOUNG controller MT100-01	YE81100010000	29	Hinge CL219-1	YW06219100000
8	Pressure gauge 0-10KG	YW85015000100	30	Inner hexagon screw M8 × 20	YW61082000200
9	Pressure gauge pipe	-	31	Spring washer 8mm	YW65008000100
10	Cover plate	-	32	Inner hexagon screw M10 × 30	YW61103000100
11	High pressure pipe	-	33	Spring washer 10	YW65010000000
12	Low pressure pipe	-	34	Flat washer 10.5 × 20 × 2mm	YW66102000100
13	Heating tank parts	Refer to Picture 2-8	35	Rack	-
14	Outer hexagon screw M6 × 20	YW60062000100	36	Side plate	-
15	Flat washer 6 × 13 × 1.0mm	YW60061300000	37	High and low pressure switch HLP830HME	YE90832500000
16	Spring washer 6	YW65006000100	38	Chilling water by-pass pipe	-
17	Nut M6	YW64080600000	39	Drainage joint part	Refer to Picture 2-10
18	Flange washer **	YR20753300000	40	Teflon pipe and connector 3/8" × 46CM	YW59384600000
19	Copper core insert 3/4"PT × ∅25	BH12030401510	41	Thick head screw M3 × 6	YW63030600000
20	Y type filter water valve 3/4" *	YW57030400000	42	Butterfly screw M8 × 15	YW69081500000
21	Lentil-headed screw M6 × 10	YW62061000000	43	Spring washer 8 × 16 × 1.5mm	YW66081600000
22	Flat washer 8 × 22 × 1.5mm	YW66082200100	44	Rear plate of control box	-

* means possible broken parts.

** means easy broken part. and spare backup is suggested.

Please confirm the version of manual before placing the purchase order to guarantee that the item number of the spare part is in accordance with the real object.

2.2.3 Assembly Drawing (STM-910WF)



Remarks: Please refer to material list 2.2.4 for specific explanation of the Arabic numbers in parts drawing.

Picture 2-3: Assembly Drawing (STM-910WF)

2.2.4 Parts List (STM-910WF)

Table 2-2: Parts List (STM-910WF)

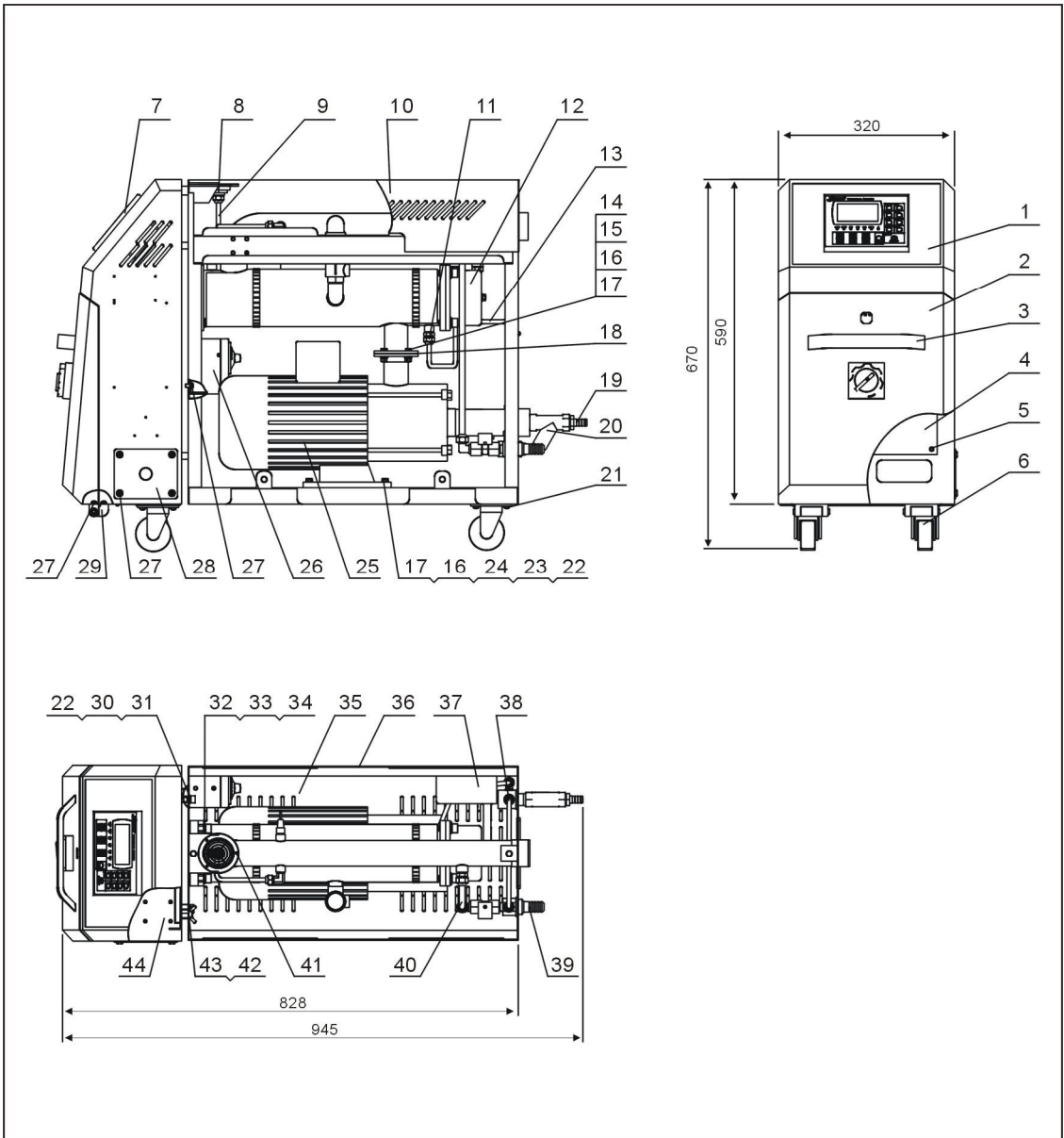
No.	Name	Part No.	No.	Name	Part No.
1	Control box	-	23	Flat washer 6 × 18 × 1.0	YW66061800000
2	Door plank	-	24	Hexagon head screw M6 × 25	YW60062500000
3	Aluminum handle 6609	YW20660900100	25	Pump joint assembly	Refer to Picture 2-9
4	Base plate of control box	-	26	EGO assembly	BH90115000050
5	Thick head screw M6 × 20	YW63062000000	27	Lentil-headed screw M5 × 10	YW62051000100
6	Castor 2"	YW03000200000	28	Line clamp fixing plate	-
7	HANYOUNG controller MT100-01	YE81100010000	29	Hinge CL219-1	YW06219100000
8	Pressure gauge 0-10KG	YW85015000100	30	Inner hexagon screw M8 × 20	YW61082000200
9	Pressure gauge pipe	-	31	Spring washer 8mm	YW65008000100
10	Cover plate	-	32	Inner hexagon screw M10 × 30	YW61103000100
11	High pressure pipe	-	33	Spring washer 10	YW65010000000
12	Low pressure pipe	-	34	Flat washer 10.5 × 20 × 2mm	YW66102000100
13	Heating tank parts	Refer to Picture 2-8	35	Rack	-
14	Outer hexagon screw M6 × 20	YW60062000100	36	Side plate	-
15	Flat washer 6 × 13 × 1.0mm	YW60061300000	37	High and low pressure switch HLP830HME	YE90832500000
16	Spring washer 6	YW65006000100	38	Chilling water by-pass pipe	-
17	Nut M6	YW64080600000	39	Drainage joint part	Refer to Picture 2-10
18	Flange washer **	YR20753300000	40	Teflon pipe and connector 3/8" × 46CM	YW59384600000
19	Copper core insert 3/4"PT × ∅25	BH12030401510	41	Thick head screw M3 × 6	YW63030600000
20	Y type filter water valve 3/4" *	YW57030400000	42	Butterfly screw M8 × 15	YW69081500000
21	Lentil-headed screw M6 × 10	YW62061000000	43	Spring washer 8 × 16 × 1.5mm	YW66081600000
22	Flat washer 8 × 22 × 1.5mm	YW66082200100	44	Rear plate of control box	-

* means possible broken parts.

** means easy broken part. and spare backup is suggested.

Please confirm the version of manual before placing the purchase order to guarantee that the item number of the spare part is in accordance with the real object.

2.2.5 Assembly Drawing (STM-1220WF)



Remarks: Please refer to material list 2.2.6 for specific explanation of the Arabic numbers in parts drawing.

Picture 2-4: Assembly Drawing (STM-1220WF)

2.2.6 Parts List (STM-1220WF)

Table 2-3: Parts List (STM-1220WF)

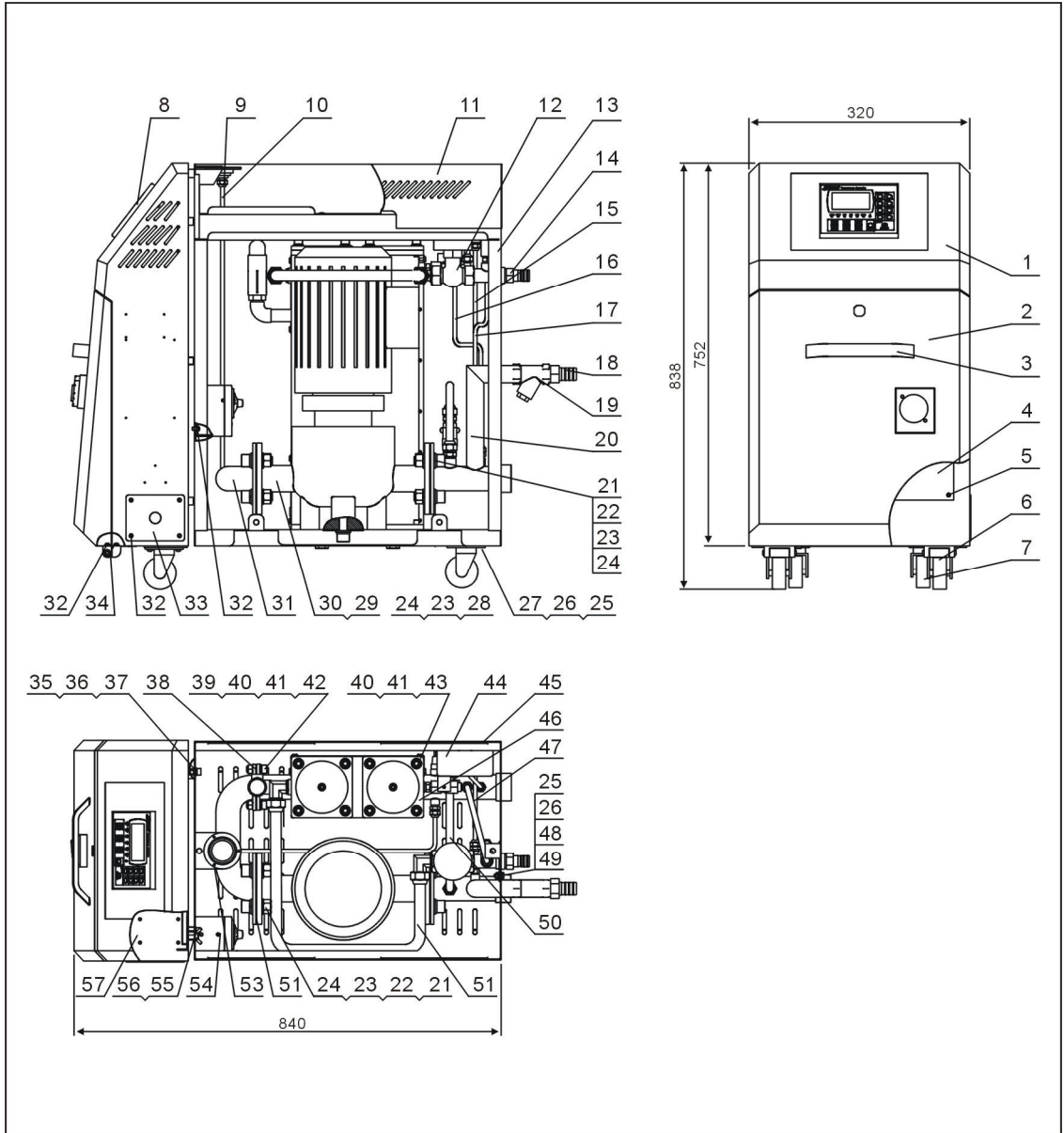
No.	Name	Part No.	No.	Name	Part No.
1	Control box	-	23	Flat washer 6 × 18 × 1.0	YW66061800000
2	Door plank	-	24	Hexagon head screw M6 × 25	YW60062500000
3	Aluminum handle 6609	YW20660900100	25	Pump joint assembly	Refer to Picture 2-9
4	Base plate of control box	-	26	EGO assembly	BH90115000050
5	Thick head screw M6 × 20	YW63062000000	27	Lentil-headed screw M5 × 10	YW62051000100
6	Castor 2.5"	YW03002500000	28	Line clamp fixing plate	-
7	HANYOUNG controller MT100-01	YE81100010000	29	Hinge CL219-1	YW06219100000
8	Pressure gauge 0-10KG	YW85015000100	30	Inner hexagon screw M8 × 20	YW61082000200
9	Pressure gauge pipe	-	31	Spring washer 8mm	YW65008000100
10	Cover plate	-	32	Inner hexagon screw M10 × 30	YW61103000100
11	High pressure pipe	-	33	Spring washer 10	YW65010000000
12	Heating tank parts	Refer to Picture 2-8	34	Flat washer 10.5 × 20 × 2mm	YW66102000100
13	Low pressure pipe	-	35	Rack	-
14	Outer hexagon screw M6 × 20	YE90832500000	36	Side plate	-
15	Flat washer 6 × 13 × 1.0mm	YW60061300000	37	High and low pressure switch HLP830HME	YE90832500000
16	Spring washer 6	YW65006000100	38	Chilling water by-pass pipe	-
17	Nut M6	YW64080600000	39	Drainage joint part	Refer to Picture 2-10
18	Flange washer **	YR20753300000	40	Teflon pipe and connector 3/8" × 50CM	YW59385000000
19	Copper core insert 1"PT	BH12012500010	41	Thick head screw M3 × 6	YW63030600000
20	Y type filter water valve 1"PT *	YW57010000000	42	Butterfly screw M8 × 15	YW69081500000
21	Lentil-headed screw M6 × 10	YW62061000000	43	Spring washer 8 × 16 × 1.5mm	YW66081600000
22	Flat washer 8 × 22 × 1.5mm	YW66082200100	44	Rear plate of control box	-

* means possible broken parts.

** means easy broken part. and spare backup is suggested.

Please confirm the version of manual before placing the purchase order to guarantee that the item number of the spare part is in accordance with the real object.

2.2.7 Assembly Drawing (STM-2430WF)



Remarks: Please refer to material list 2.2.8 for specific explanation of the Arabic numbers in parts drawing.

Picture 2-5: Assembly Drawing (STM-2430WF)

2.2.8 Parts List (STM-2430WF)

Table 2-4: Parts List (STM-2430WF)

No.	Name	Part No.	No.	Name	Part No.
1	Control box	-	30	Pump TD32-27/2	YM20322700000
2	Door plank 2	-	31	Connection pipe	-
	Door plank 1	-			
3	Aluminum handle 6609	YW20660900100	32	Lentil-headed screw M5 × 10	YW62051000100
4	Base plate 2 of control box	-	33	Line clamp fixing plate	-
	Base plate 1 of control box	-			
5	Thick head screw M6 × 20	YW63062000000	34	Hinge CL219-1	YW06219100000
6	Movable castor 3"	YW03000300200	35	Inner hexagon screw M8 × 20	YW61082000200
7	Castor with brake 3"	YW03000300000	36	Spring washer 8mm	YW65008000100
8	HANYOUNG controller MT100-01	YE81100010000	37	Flat washer 8 × 22 × 1.5mm	YW66082200100
9	Pressure gauge 0-10KG	YW85015000100	38	Flange washer 1**	-
10	Pressure gauge pipe	-	39	Inner hexagon screw M10 × 30	YW61103000100
11	Cover plate	-	40	Spring washer 10	YW65010000000
12	Water outlet joint parts	Refer to Picture 2-14	41	Flat washer 10 × 25 × 2mm	YW66102500000
13	Rack	-	42	Nut M10	YW64001000300
14	Copper core insert 3/4"PT × ∅25	BH12030401510	43	Inner hexagon screw M10 × 25	YW61102500000
15	Low pressure pipe	-	44	High and low pressure switch HLP830HME	YE90832500000
16	High pressure pipe	-	45	Side plate	-
17	Chilling water by-pass pipe	-	46	Heating tank parts	Refer to Picture 2-11
18	Copper core insert 1"PT	BH12012500010	47	Water drainage pipe 1	-
19	Y type filter water valve 1"PT *	YW57010000000	48	Flat washer 6 × 13 × 1mm	YW66061300000
20	Water inlet parts	-	49	Nut M6	YW64000600300
21	Inner hexagon screw M16 × 50	YW61165000000	50	Hot water by-pass pipe	-
22	Hex nut M16	YW64001600000	51	Water drainage pipe 2	-
23	Spring washer 16	YW65016000000	52	Flange washer 2**	-

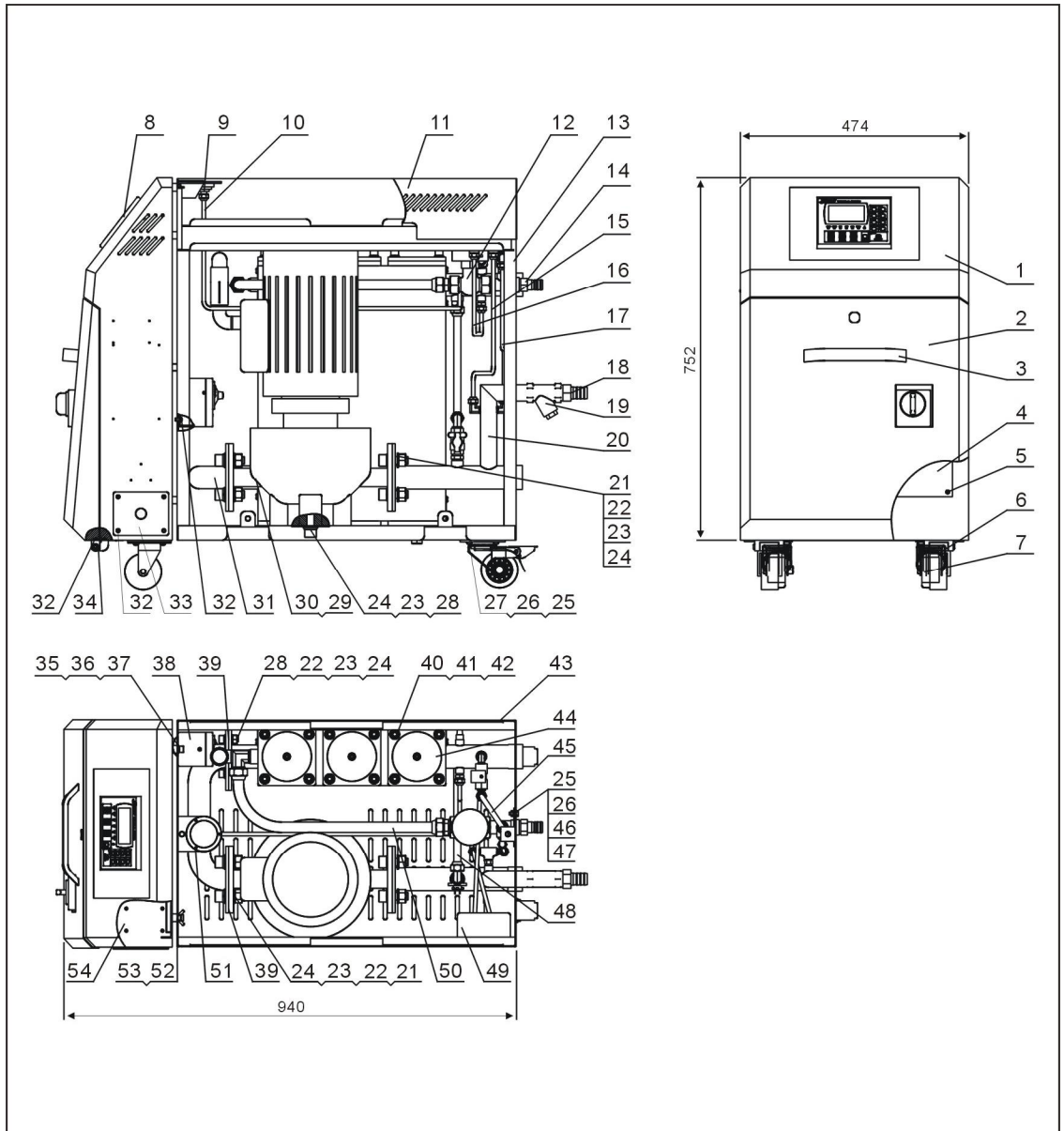
No.	Name	Part No.	No.	Name	Part No.
24	Flat washer 16 × 30 × 2mm	YW66163000000	53	Thick head screw M3 × 6	YW63030600000
25	Outer hexagon screw M6 × 15	YW60061500100	54	EGO assembly	BH90115000050
26	Spring washer 6	YW65006000100	55	Butterfly screw M8 × 15	YW69081500000
27	Flat washer 6 × 18 × 1mm	YW66061800000	56	Spring washer 8 × 16 × 1.5mm	YW66081600000
28	Inner hexagon screw M16 × 35	YW61163500000	57	Rear plate of control box	-
29	Pump TD32-25/2	YM20322500000			

* means possible broken parts.

** means easy broken part. and spare backup is suggested.

Please confirm the version of manual before placing the purchase order to guarantee that the item number of the spare part is in accordance with the real object.

2.2.9 Assembly Drawing (STM-3650WF)



Remarks: Please refer to material list 2.2.10 for specific explanation of the Arabic numbers in parts drawing.

Picture 2-6: Assembly Drawing (STM-3650WF)

2.2.10 Parts List (STM-3650WF)

Table 2-4: Parts List (STM-3650WF)

No.	Name	Part No.	No.	Name	Part No.
1	Control box	-	28	Inner hexagon screw M16 × 35	YW61163500000
2	Door plank	-	29	Pump TD32-32/2	YM20323200000
3	Aluminum handle 6609	YW20660900100	30	Pump TD32-38/2	YM20323800000
4	Base plate of control box	-	31	Connection pipe	-
5	Thick head screw M6 × 20	YW63062000000	32	Lentil-headed screw M5 × 10	YW62051000100
6	Movable castor 3"	YW03000300200	33	Line clamp fixing plate	-
7	Castor with brake 3"	YW03000300000	34	Hinge CL219-1	YW06219100000
8	HANYOUNG controller MT100-01	YE81100010000	35	Inner hexagon screw M8 × 20	YW61082000200
9	Pressure gauge 0-10KG	YW85015000100	36	Spring washer 8mm	YW65008000100
10	Pressure gauge pipe	-	37	Flat washer 8 × 22 × 1.5mm	YW66082200100
11	Cover plate	-	38	EGO assembly	BH90115000050
12	Water outlet joint parts	Refer to Picture 2-14	39	Flange washer **	-
13	Rack	-	40	Spring washer 10	YW65010000000
14	Copper core insert 3/4"PT × ∅25	BH12030401510	41	Flat washer 10 × 25 × 2mm	YW66102500000
15	Low pressure pipe	-	42	Inner hexagon screw M10 × 25	YW61102500000
16	High pressure pipe	-	43	Side plate	-
17	Chilling water by-pass pipe	-	44	Heating tank parts	Refer to Picture 2-12
18	Copper core insert 1"PT	BH12012500010	45	Water drainage pipe 1	-
19	Y type filter water valve 1"PT *	YW57010000000	46	Flat washer 6 × 13 × 1mm	YW66061300000
20	Water inlet parts	-	47	Nut M6	YW64000600300
21	Inner hexagon screw M16 × 50	YW61165000000	48	Hot water by-pass pipe	-
22	Hex nut M16	YW64001600000	49	High and low pressure switch HLP830HME	YE90832500000
23	Spring washer 16	YW65016000000	50	Water drainage pipe 2	-
24	Flat washer 16 × 30 × 2mm	YW66163000000	51	Thick head screw M3 × 6	YW63030600000
25	Outer hexagon screw M6 × 15	YW60061500100	52	Butterfly screw M8 × 15	YW69081500000

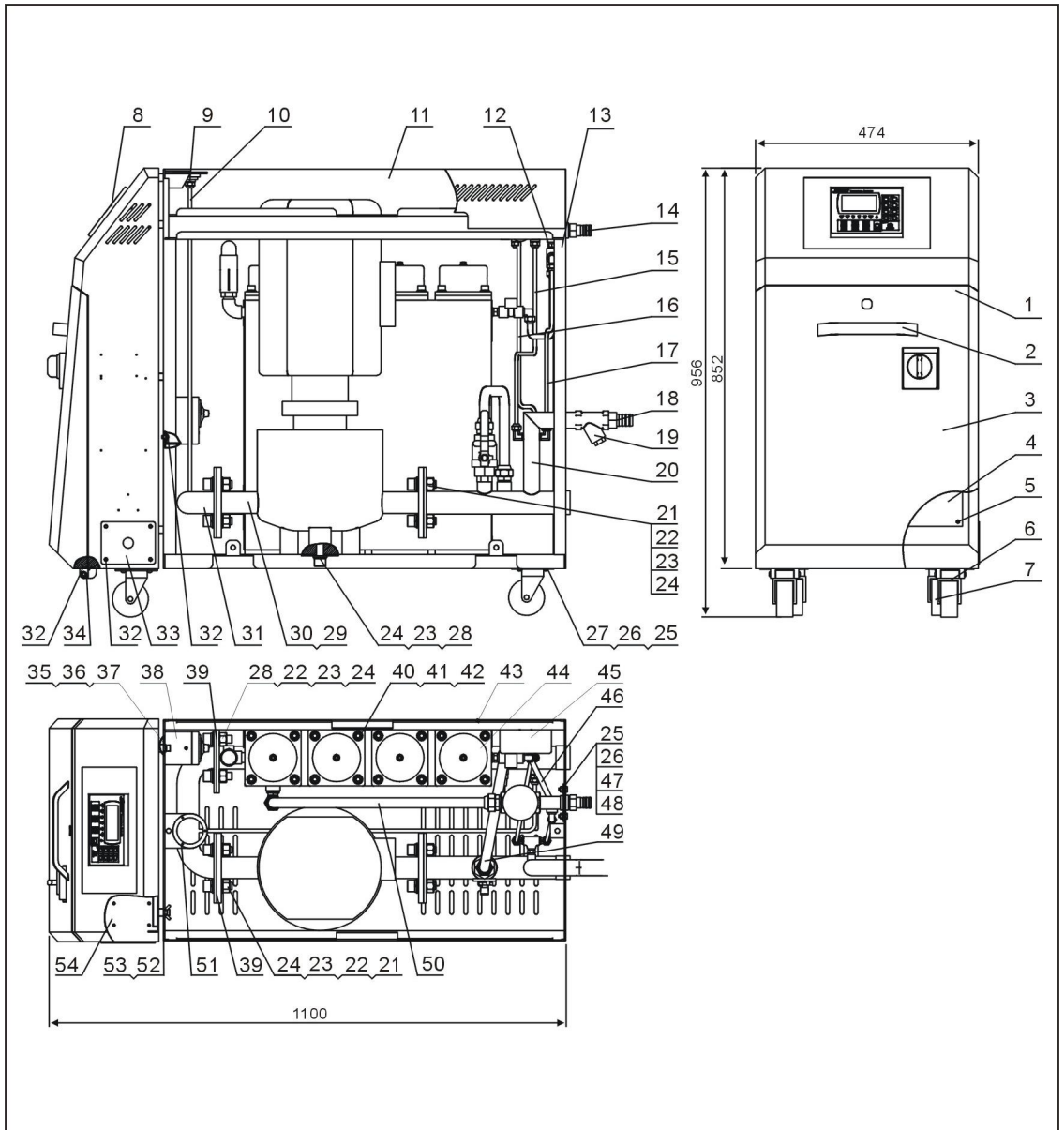
No.	Name	Part No.	No.	Name	Part No.
26	Spring washer 6	YW65006000100	53	Spring washer 8 × 16 × 1.5mm	YW66081600000
27	Flat washer 6 × 18 × 1mm	YW66061800000	54	Rear plate of control box	-

* means possible broken parts.

** means easy broken part. and spare backup is suggested.

Please confirm the version of manual before placing the purchase order to guarantee that the item number of the spare part is in accordance with the real object.

2.2.11 Assembly Drawing (STM-4875WF)



Remarks: Please refer to material list 2.2.12 for specific explanation of the Arabic numbers in parts drawing.

Picture 2-7: Assembly Drawing (STM-4875WF)

2.2.12 Parts List (STM-4875WF)

Table 2-4: Parts List (STM-4875WF)

No.	Name	Part No.	No.	Name	Part No.
1	Control box	-	28	Inner hexagon screw M16 × 35	YW61163500000
2	Aluminum handle 6609	YW20660900100	29	Pump TD40-36/2	YM20403600000
3	Door plank	-	30	Pump TD40-35/2	YM20403500000
4	Base plate of control box	-	31	Connection pipe	-
5	Thick head screw M6 × 20	YW63062000000	32	Lentil-headed screw M5 × 10	YW62051000100
6	Movable castor 3"	YW03000300200	33	Line clamp fixing plate	-
7	Castor with brake 3"	YW03000300000	34	Hinge CL219-1	YW06219100000
8	HANYOUNG controller MT100-01	YE81100010000	35	Inner hexagon screw M8 × 20	YW61082000200
9	Pressure gauge 0-10KG	YW85015000100	36	Spring washer 8mm	YW65008000100
10	Pressure gauge pipe	-	37	Flat washer 8 × 22 × 1.5mm	YW66082200100
11	Cover plate	-	38	EGO assembly	BH90115000050
12	Water outlet joint parts	Refer to Picture 2-14	39	Flange washer **	-
13	Rack	-	40	Spring washer 10	YW65010000000
14	Copper core insert 3/4"PT × ∅25	BH12030401510	41	Flat washer 10 × 25 × 2mm	YW66102500000
15	Low pressure pipe	-	42	Inner hexagon screw M10 × 25	YW61102500000
16	High pressure pipe	-	43	Side plate	-
17	Chilling water by-pass pipe	-	44	Heating tank parts	Refer to Picture 2-13
18	Copper core insert 1"PT	BH12012500010	45	High and low pressure switch HLP830HME	YE90832500000
19	Y type filter water valve 1"PT *	YW57010000000	46	Water drainage pipe 1	-
20	Water inlet parts	-	47	Flat washer 6 × 13 × 1mm	YW66061300000
21	Inner hexagon screw M16 × 50	YW61165000000	48	Nut M6	YW64000600300
22	Hex nut M16	YW64001600000	49	Hot water by-pass pipe	-
23	Spring washer 16	YW65016000000	50	Water drainage pipe 2	-
24	Flat washer 16 × 30 × 2mm	YW66163000000	51	Thick head screw M3 × 6	YW63030600000
25	Outer hexagon screw M6 × 15	YW60061500100	52	Butterfly screw M8 × 15	YW69081500000

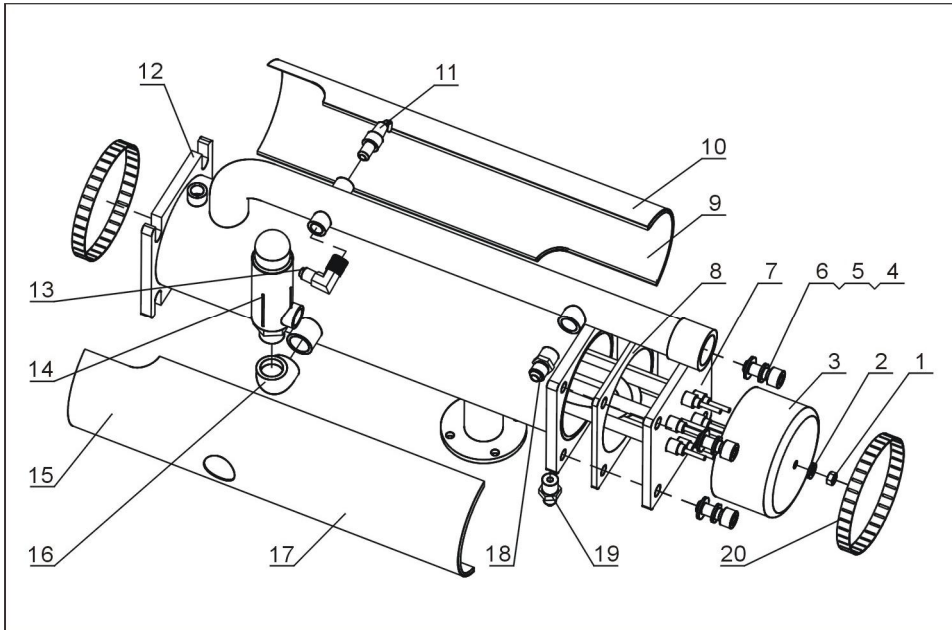
No.	Name	Part No.	No.	Name	Part No.
26	Spring washer 6	YW65006000100	53	Spring washer 8 × 16 × 1.5mm	YW66081600000
27	Flat washer 6 × 18 × 1mm	YW66061800000	54	Rear plate of control box	-

* means possible broken parts.

** means easy broken part. and spare backup is suggested.

Please confirm the version of manual before placing the purchase order to guarantee that the item number of the spare part is in accordance with the real object.

2.2.13 Heating Tank Parts Diagram (STM-607~1220WF)



Remarks: Please refer to material list 2.2.14 for specific explanation of the Arabic numbers in parts drawing.

Picture 2-8: Heating Tank Parts (STM-607~1220WF)

2.2.14 Table List of Heating Tank Parts (STM-607~1220WF)

Table 2-4: Table List of Heating Tank Parts (STM-607~1220WF)

No.	Name	Part No.	Notes
1	Hex nut M6	YW64000600300	-
2	Flat washer 6 × 13 × 1.0mm	YW66061300000	-
3	Heater cover	BL80091000120	-
4	Inner hexagon screw M10 × 25	YW61102500000	-
5	Spring washer 10	YW65010000000	-
6	Flat washer 10 × 25 × 1.5mm	YW66102500000	-
7	Heater set (6kW) *	BH70060700250	For 607WF
	Heater set (9kW) *	BH70091000250	For 910WF
	Heater set (12kW) *	BH70122000250	For 1220WF
8	Graphite washer 120 × 120 × 2.0 **	YR20121200000	-
9	Heating tank cotton layer 1	-	-

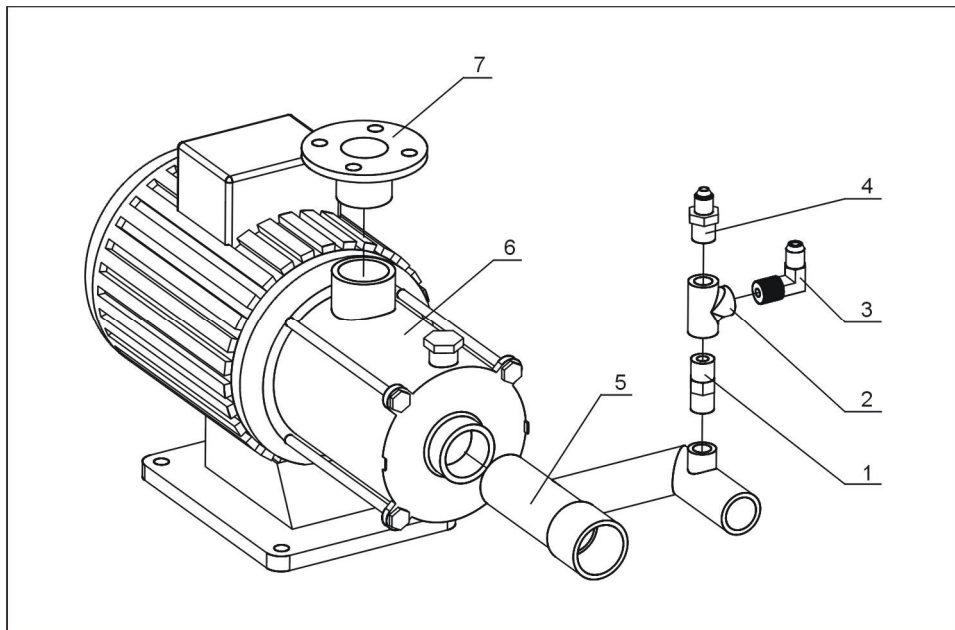
No.	Name	Part No.	Notes
10	Heating tank cover 1	-	-
11	Thermocouple	BE90341500050	-
12	Heating tank	-	-
13	Teflon pipe connector 1/4"H × 1/4"PT (L)	YW04010400400	-
14	Safety valve 1/2"	BW05100000050	-
15	Heating tank cover 2	-	-
16	Stainless steel water pipe bend 1/2"	YW53001200100	-
17	Heating tank cotton layer 2	-	-
18	Teflon pipe connector 3/8"H × 3/8"PT	BH12030800110	-
19	Teflon pipe connector 1/4"H × 1/4"PT	BH12010400410	-
20	Stainless steel clamp 4 1/2"(91~114mm)	YW02004500000	-

* means possible broken parts.

** means easy broken part. and spare backup is suggested.

Please confirm the version of manual before placing the purchase order to guarantee that the item number of the spare part is in accordance with the real object.

2.2.15 Pump Connector Assembly Diagram (STM-607~1220WF)



Remarks: Please refer to material list 2.2.16 for specific explanation of the Arabic numbers in parts drawing.

Picture 2-9: Pump Connector Assembly Diagram (STM-607~1220WF)

2.2.16 Parts List of Pump Connector Assembly (STM-607~1220WF)

Table 2-5: Parts List of Pump Connector Assembly (STM-607~1220WF)

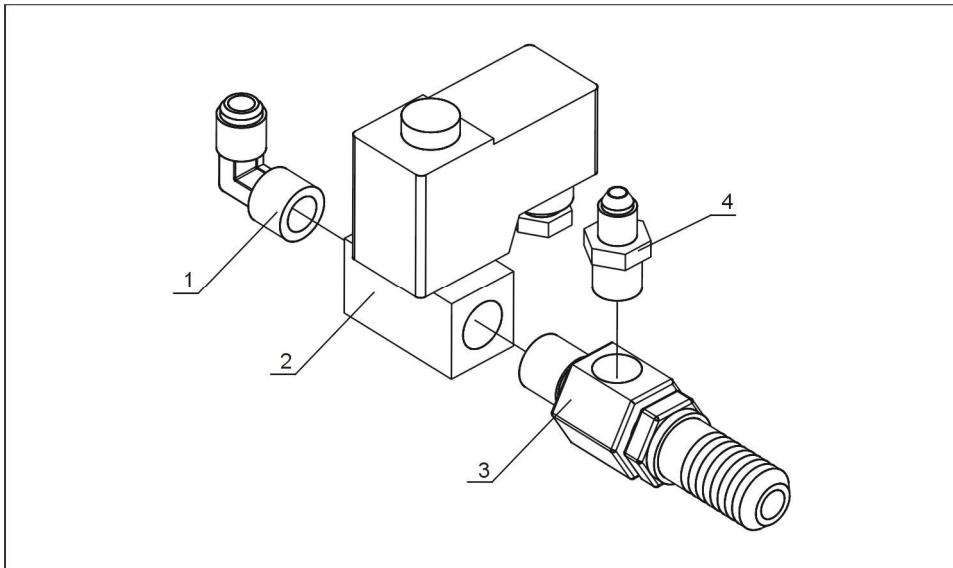
No.	Name	Part No.	Notes	
1	Copper pipe coupler 1/4"PT × 1/4"PT	BH12010400110	-	
2	Stainless steel water pipe T joint 1/4"	YW52010400000	-	
3	Copper Teflon Pipe Connector 1/4"H × 1/4"PT(L)	YW04010400400	-	
4	Copper Teflon Pipe Connector 1/4"H × 1/4"PT	BH12010400410	-	
5	Pump Inlet Connector	-	-	
6	Pump CHLF(2-40)	YM20024000000	607WF	For 50Hz
	Pump CHLF(2-20)	YM20022000000		For 60Hz
	Pump CHLF(4-40)	YM20044000000	910WF	For 50Hz
	Pump CHLF(4-20)	YM20042000400		For 60Hz
	Pump CHLF(8-30)	YM20083000000	1220WF	For 50Hz
	Pump CHLF(8-20)	YM20082000100		For 60Hz
7	Connector of pump outlet	-	-	

* means possible broken parts.

** means easy broken part. and spare backup is suggested.

Please confirm the version of manual before placing the purchase order to guarantee that the item number of the spare part is in accordance with the real object.

2.2.17 Water Drainage Connector Parts Diagram (STM-607~1220WF)



Remarks: Please refer to material list 2.2.18 for specific explanation of the Arabic numbers in parts drawing.

Picture 2-10: Water Drainage Connector Parts Diagram (STM-607~1220WF)

2.2.18 Table List of Water Drainage Connector Parts (STM-607~1220WF)

Table 2-6: Water Drainage Connector Parts (STM-607~1220WF)

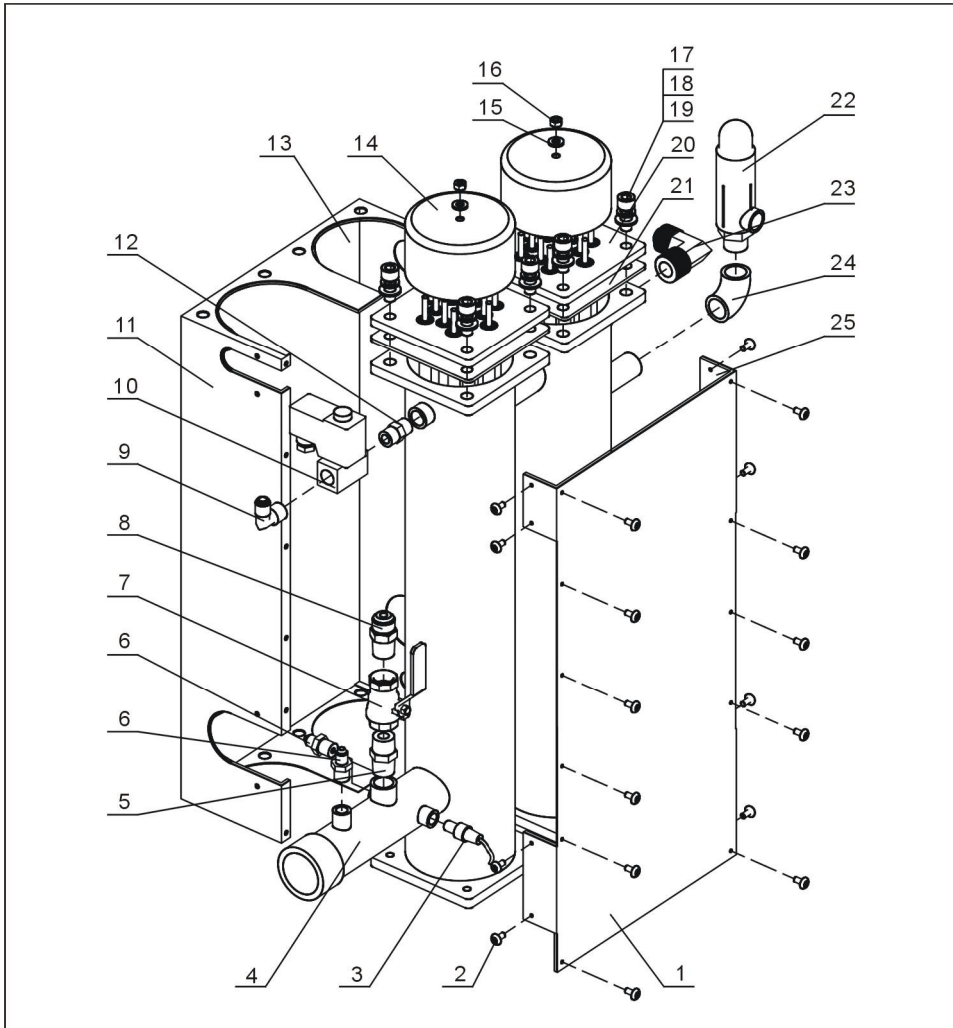
No.	Name	Part No.	Notes
1	Copper Teflon Pipe Connector 3/8H × 3/8PT(L)	YW04030800300	-
2	Solenoid valve 3/8" (Airtac) *	YE32331000000	-
3	The third set of copper joint	BH12060703710	-
4	Copper Teflon pipe male 1/4"H × 1/4"PT	BH12010400410	-

* means possible broken parts.

** means easy broken part. and spare backup is suggested.

Please confirm the version of manual before placing the purchase order to guarantee that the item number of the spare part is in accordance with the real object.

2.2.19 Heating Tank Parts Assembly Diagram (STM-2430WF)



Remarks: Please refer to material list 2.2.20 for specific explanation of the Arabic numbers in parts drawing.

Picture 2-11: Heating Tank Parts Assembly (STM-2430WF)

2.2.20 Table List of Heating Tank Parts (STM-2430WF)

Table 2-7: Heating Tank Parts (STM-2430WF)

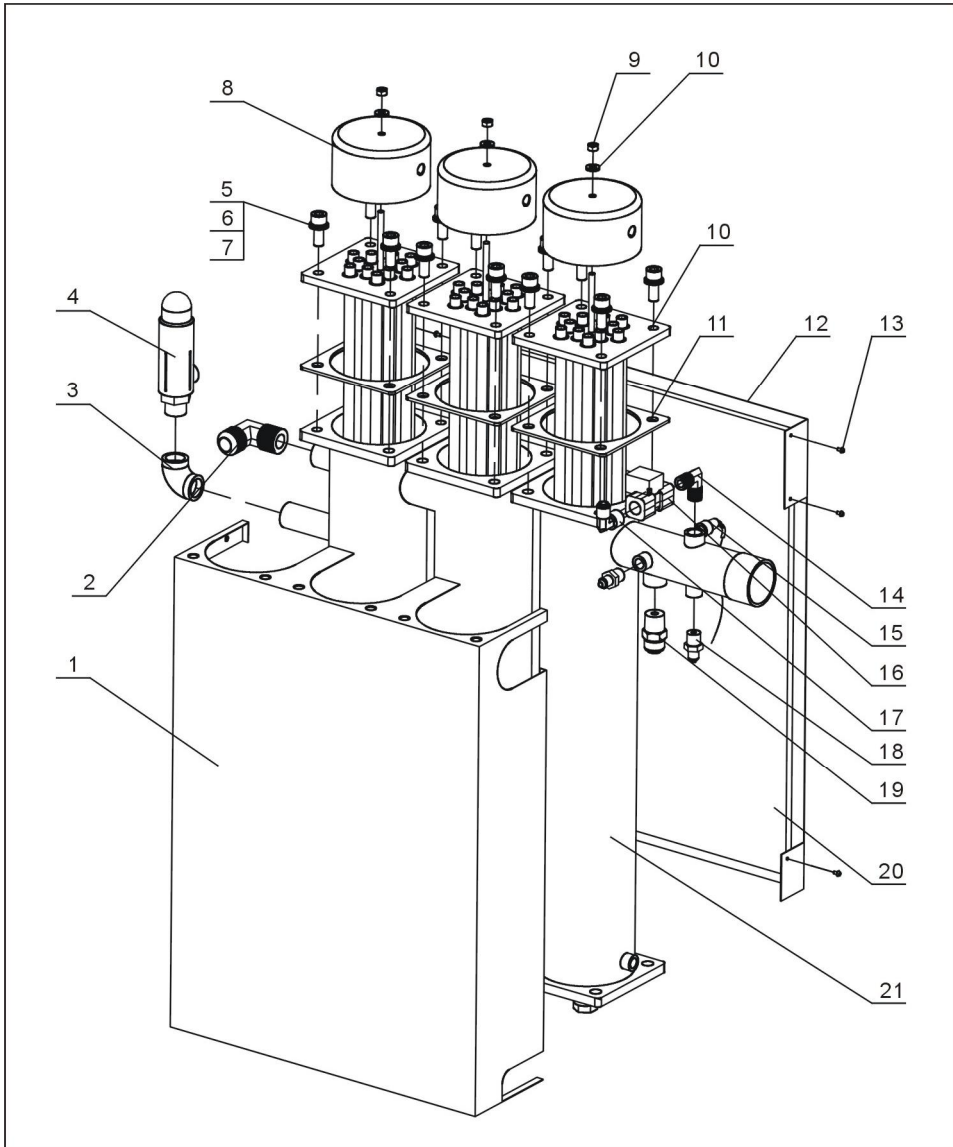
No.	Name	Part No.	Notes
1	Heating tank cover 2	-	-
2	Self-tapping screw M3.5 × 10	YW67351000000	-
3	Thermocouple	BE90341500050	-
4	Heating tank	-	-
5	Pipe coupler 1/2"	BH12010200010	-
6	Copper Teflon pipe connector 1/4"PT × 1/4"H	BH12010400410	-
7	Copper ball valve 1/2"PT(KITZ)	YW50010200500	-
8	Copper Teflon pipe connector 1/2"PT × 1/2"H	BH12121200610	-
9	Copper Teflon pipe connector 3/8"PT × 3/8"H(L type)	YW04030800300	-
10	Solenoid valve 2L030-10-DG1007C (Airtac) *	YE32331000000	-
11	Heating tank cover 1	-	-
12	Pipe coupler 3/8"	BH12030800110	-
13	Heating tank cotton layer 1	-	-
14	Pipe heater cover	BL80091000120	-
15	Flat washer 6 × 13 × 1.0mm	YW66061300000	-
16	Hex nut M6	YW64000600300	-
17	Inner hexagon screw M10 × 25	YW61102500000	-
18	Spring washer 10	YW65010000000	-
19	Flat washer 10 × 25 × 1.5mm	YW66102500000	-
20	Pipe heater set (12kW) *	BH70122000250	-
21	Graphite washer 120 × 120 × 2.0 **	YR20121200000	-
22	Safety valve 1/2"	BW05100000050	-
23	Copper Teflon Pipe Connector 3/4"PT×3/4"H (L type)	YW04030400000	-
24	Stainless steel bend 1/2"	YW53001200100	-
25	Heating tank cotton layer 2	-	-

* means possible broken parts.

** means easy broken part. and spare backup is suggested.

Please confirm the version of manual before placing the purchase order to guarantee that the item number of the spare part is in accordance with the real object.

2.2.21 Heating Tank Parts Diagram (STM-3650WF)



Remarks: Please refer to material list 2.2.22 for specific explanation of the Arabic numbers in parts drawing.

Picture 2-12: Heating Tank Parts (STM-3650WF)

2.2.22 Table List of Heating Tank Parts (STM-3650WF)

Table 2-8: Heating Tank Parts (STM-3650WF)

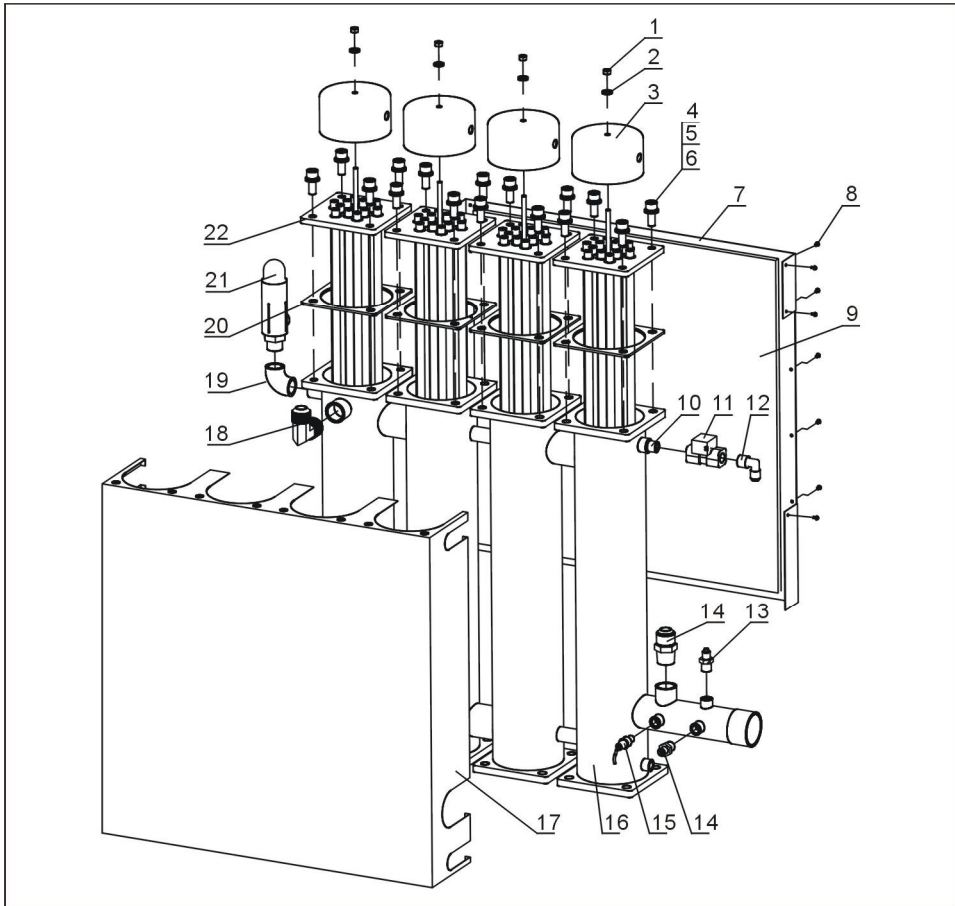
No.	Name	Part No.	Notes
1	Heating tank cover 1	-	-
2	Copper Teflon Pipe Connector 3/4"PT × 3/4"H(L type)	YW04030400000	-
3	Stainless steel bend 1/2"	YW53001200100	-
4	Safety valve 1/2"	BW05100000050	-
5	Inner hexgon screw M10×25	YW61102500000	-
6	Spring washer 10	YW65010000000	-
7	Flat washer 10×25×1.5mm	YW66102500000	-
8	Pipe heater cover	BL80091000120	-
9	Hex nut M6	YW64000600300	-
10	Flat washer 6×13×1.0mm	YW66061300000	-
11	Pipe heater set (12kW) *	BH70122000250	-
12	Graphite washer 120 × 120 × 2.0 **	YR20121200000	-
13	Heating tank cover 2	-	-
14	Self-tapping screw M3.5 × 10	YW67351000000	-
15	Pipe coupler 3/8" L type	YW04030800100	-
16	Solenoid valve 2L030-10-DG1007C (Airtac) *	YE32331000000	-
17	Copper Teflon pipe connector 3/8"PT×3/8"H (L type)	YW04030800300	-
18	Copper Teflon pipe connector 1/4"PT×1/4"H	BH12010400410	-
19	Copper Teflon pipe connector 1/2"PT×1/2"H	BH12121200610	-
20	Heating tank cotton layer	-	-
21	Heating tank	-	-

* means possible broken parts.

** means easy broken part. and spare backup is suggested.

Please confirm the version of manual before placing the purchase order to guarantee that the item number of the spare part is in accordance with the real object.

2.2.23 Heating Tank Parts Diagram (STM-4875WF)



Remarks: Please refer to material list 2.2.24 for specific explanation of the Arabic numbers in parts drawing.

Picture 2-13: Heating Tank Parts (STM-4875WF)

2.2.24 Table List of Heating Tank Parts (STM-4875WF)

Table 2-9: Heating Tank Parts (STM-4875WF)

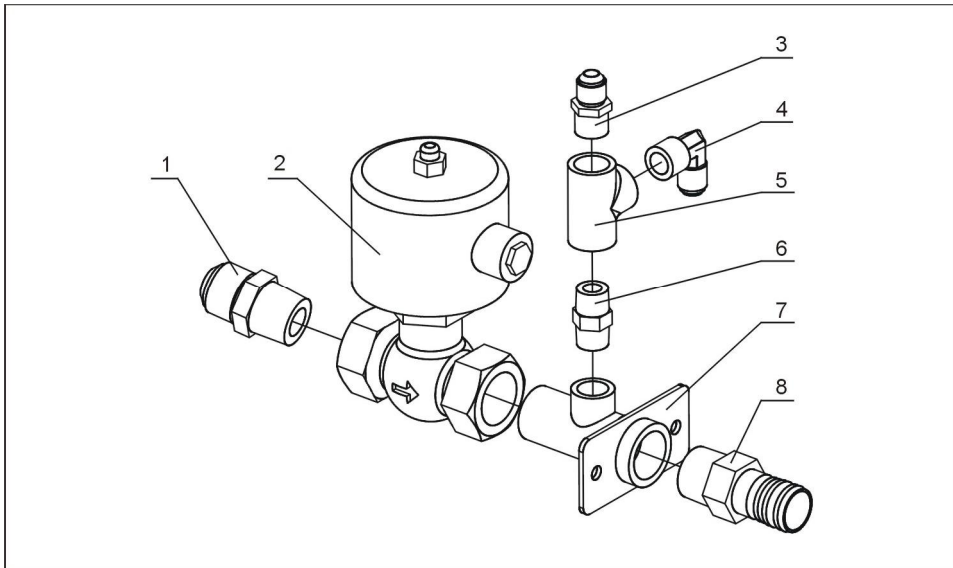
No.	Name	Part No.	Notes
1	Hex nut M6	YW64000600300	-
2	Flat washer 6 × 13 × 1.0mm	YW66061300000	-
3	Pipe heater cover	BL80091000120	-
4	Inner hexagon screw M10 × 25	YW61102500000	-
5	Spring washer 10	YW65010000000	-
6	Flat washer 10 × 25 × 1.5mm	YW66102500000	-
7	Heating tank cover 2	-	-
8	Self-tapping screw M3.5 × 10	YW67351000000	-
9	Heating tank cotton layer	-	-
10	Pipe coupler 3/8"	BH12030800110	-
11	Solenoid valve 2L030-10-DG1007C (Airtac) *	YE32331000000	-
12	Copper Teflon pipe connector 3/8"PT×3/8"H (L type)	YW04030800300	-
13	Copper Teflon pipe connector 3/4"PT × 3/4"H	BH12030400310	-
14	Copper Teflon pipe connector 1/4"PT × 1/4"H	BH12010400410	-
15	Thermocouple	BE90341500050	-
16	Heating tank	-	-
17	Heating tank cover 1	-	-
18	Copper Teflon pipe connector 3/4"PT × 3/4"H(L type)	YW04030400000	-
19	Stainless steel bend 1/2"	YW53001200100	-
20	Graphite washer 120 × 120 × 2.0 **	YR20121200000	-
21	Safety valve 1/2"	BW05100000050	-
22	Pipe heater set (12kW) *	BH70122000250	-

* means possible broken parts.

** means easy broken part. and spare backup is suggested.

Please confirm the version of manual before placing the purchase order to guarantee that the item number of the spare part is in accordance with the real object.

2.2.25 Water Outlet Connector Parts Diagram (STM-2430~4875WF)



Remarks: Please refer to material list 2.2.26 for specific explanation of the Arabic numbers in parts drawing.

Picture 2-14: Water Outlet Connector Parts (STM-2430~4875WF)

2.2.26 Table List of Water Outlet Connector Parts (STM-2430~4875WF)

Table 2-10: Water Outlet Connector Parts (STM-2430~4875WF)

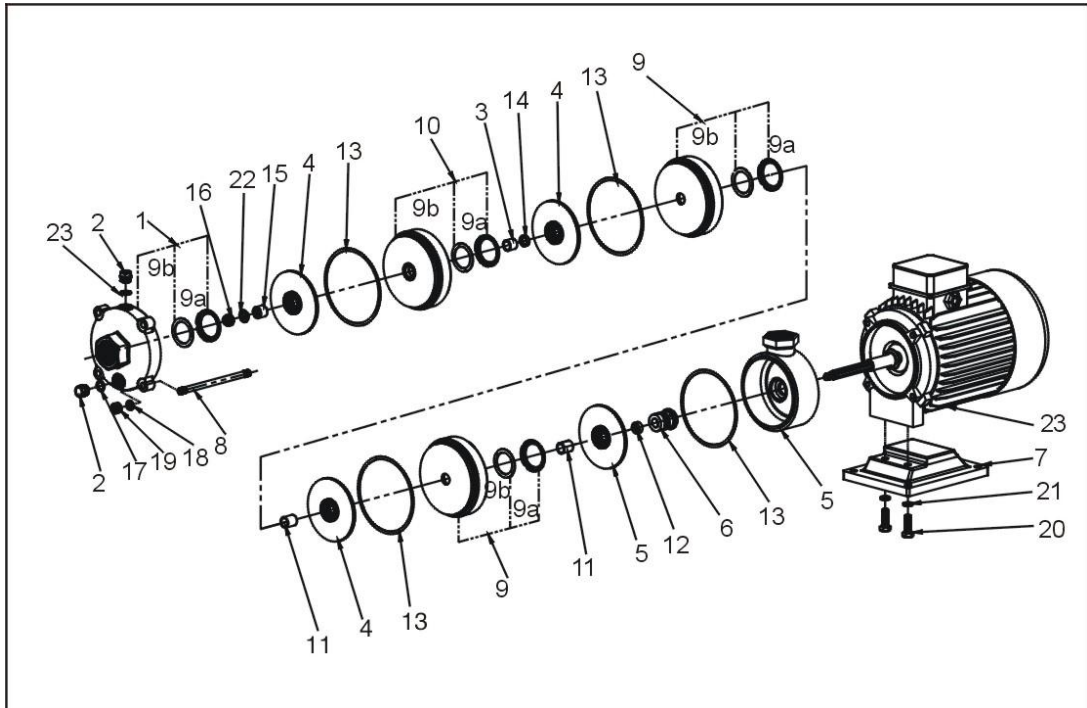
No.	Name	Part No.	Notes
1	Copper Teflon pipe connector 3/4"PT × 3/4"H	BH12030400310	For 2430/3650WF
	Copper Teflon pipe connector 3/4"PT × 3/4"H(L)	YW04030400000	For 4875WF
2	Solenoid valve 3/4"(Kailing)*	YE32342500000	-
3	Copper Teflon pipe connector 3/8"PT × 3/8"H	BH12030800610	-
4	Copper Teflon pipe connector 3/8"PT × 1/4"H (L type)	YW04030800500	-
5	Stainless steel water pipe T joint 3/8"PT	YW52030800000	-
6	Pipe coupler 3/8"PT	BH12030800110	-
7	Water outlet connector	-	-
8	Copper core insert 3/4"PT × ∅25	BH12030401510	-

* means possible broken parts.

** means easy broken part. and spare backup is suggested.

Please confirm the version of manual before placing the purchase order to guarantee that the item number of the spare part is in accordance with the real object.

2.2.27 Pump



- | | | | |
|---------------------------|--------------------------------|--------------------------|----------------------------|
| 1. Inlet water body | 2. End cap | 3. Wear-resistant sleeve | 4. Impeller |
| 5. Outlet water body | 6. Mechanical seal | 7. Base | 8. Draw bar |
| 9. Guide vane | 9a. Choma cover | 9b. Choma | 10. Guide vane for support |
| 11. Impeller spacer | 12. Spacer | 13. Sealing gasket | |
| 14. Impeller short spacer | 15. First-level impeller gland | 16. Locknut | 17. O-ring |
| 18. Elastic washer | 19. Nut | 20. Bolt | 21. Elastic washer |
| 22. Washer | 23. Motor | | |

Picture 2-15: Pump