
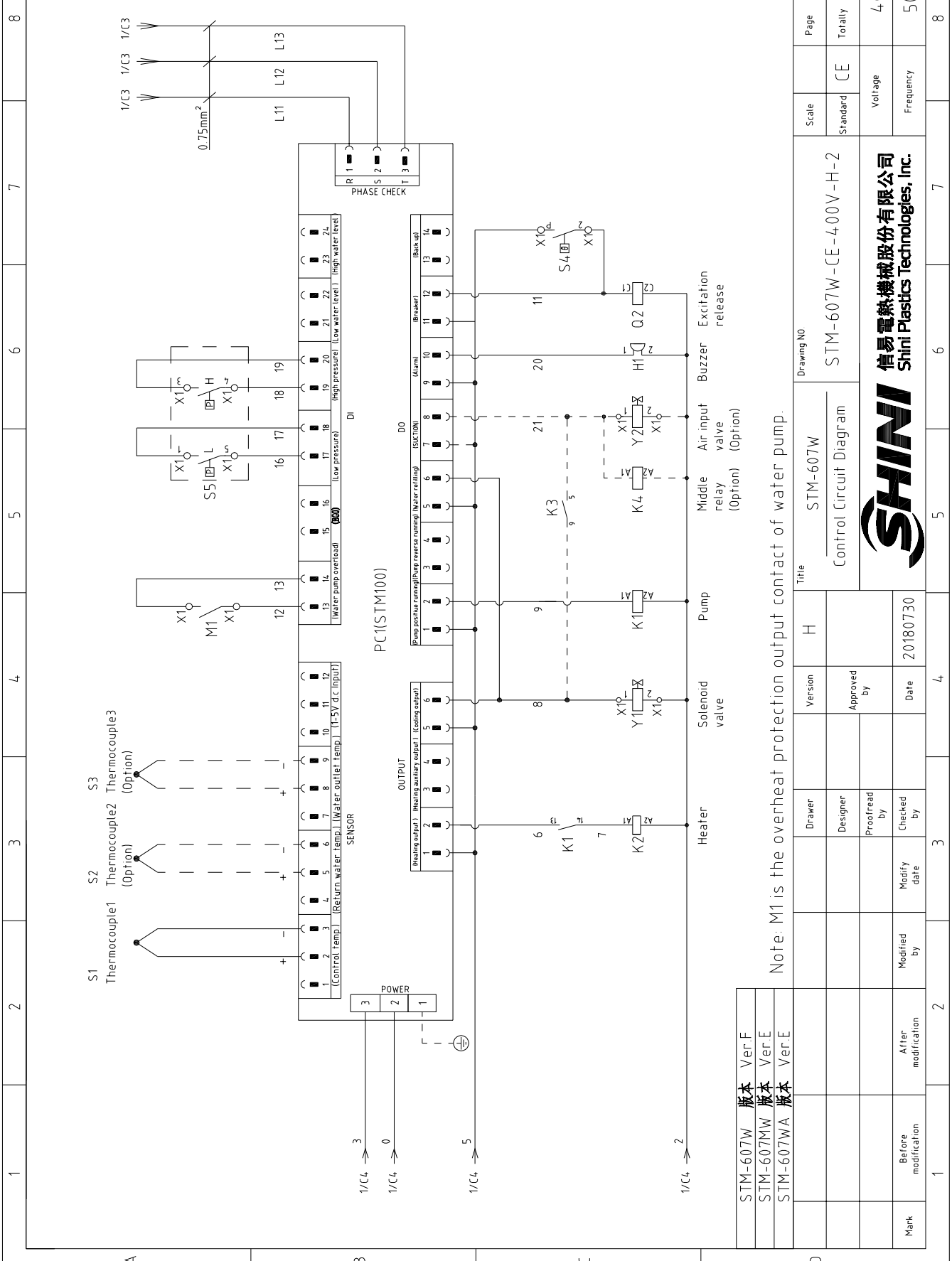


STM-607W	版本	Ver.F
STM-607MW	版本	Ver.E
STM-607WA	版本	Ver.E

When equipped with magnetic pump P=0.55KW IN=1.0A

D	Mark	Before modification	Modified by	2	3	4	5	6	7	8
	Modified date		20180730							
D	Drawer	Designer	Proofread by	Checked by						
	Version	Approved by								
	Title				STM-607W	Drawing NO				
Main Circuit Diagram				STM-607W-CE-400V-H-1	Standard	CE	Scale		Page 1	Totally 5 Pages
Voltage		Frequency								
400V		50HZ								
 <b>信易電熱機械股份有限公司</b> <b>Shini Plastics Technologies, Inc.</b>										



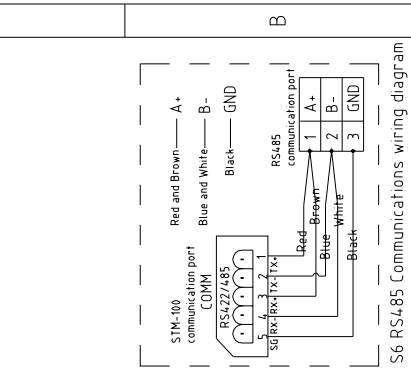
STM-607W	版本	Ver.F
STM-607MW	版本	Ver.E
STM-607WA	版本	Ver.E

Note: M1 is the overheat protection output contact of water pump.

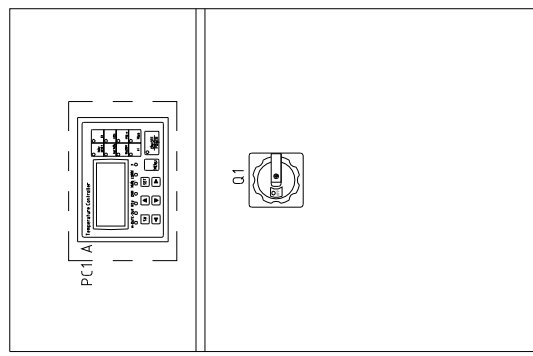
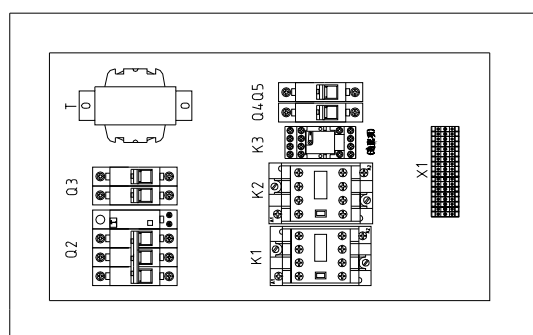
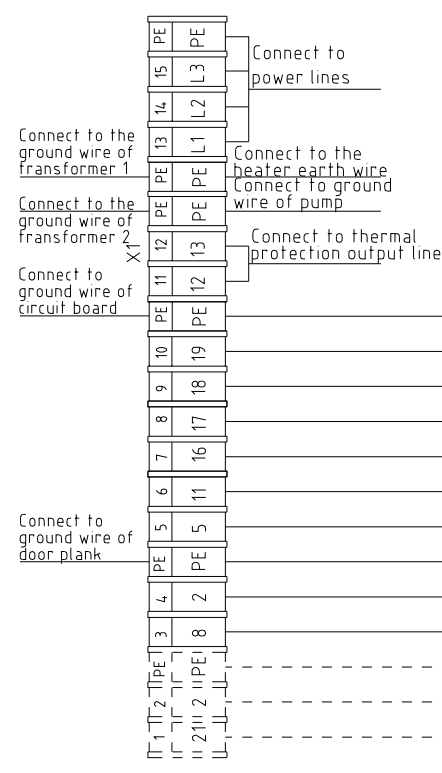
Title		Drawing NO	
STM-607W		STM-607W-CE-4.00V-H-2	
Version		Scale	
H		Standard	
Approved by		CE	
Date		Voltage	
20180730		400V	
Checked by		Frequency	
Modified by		50HZ	
Modified date		Page	
2		2	
3		Totally	
4		5	
5		Pages	
6		400V	
7		50HZ	
8		8	



A



S6 RS485 Communications wiring diagram



C

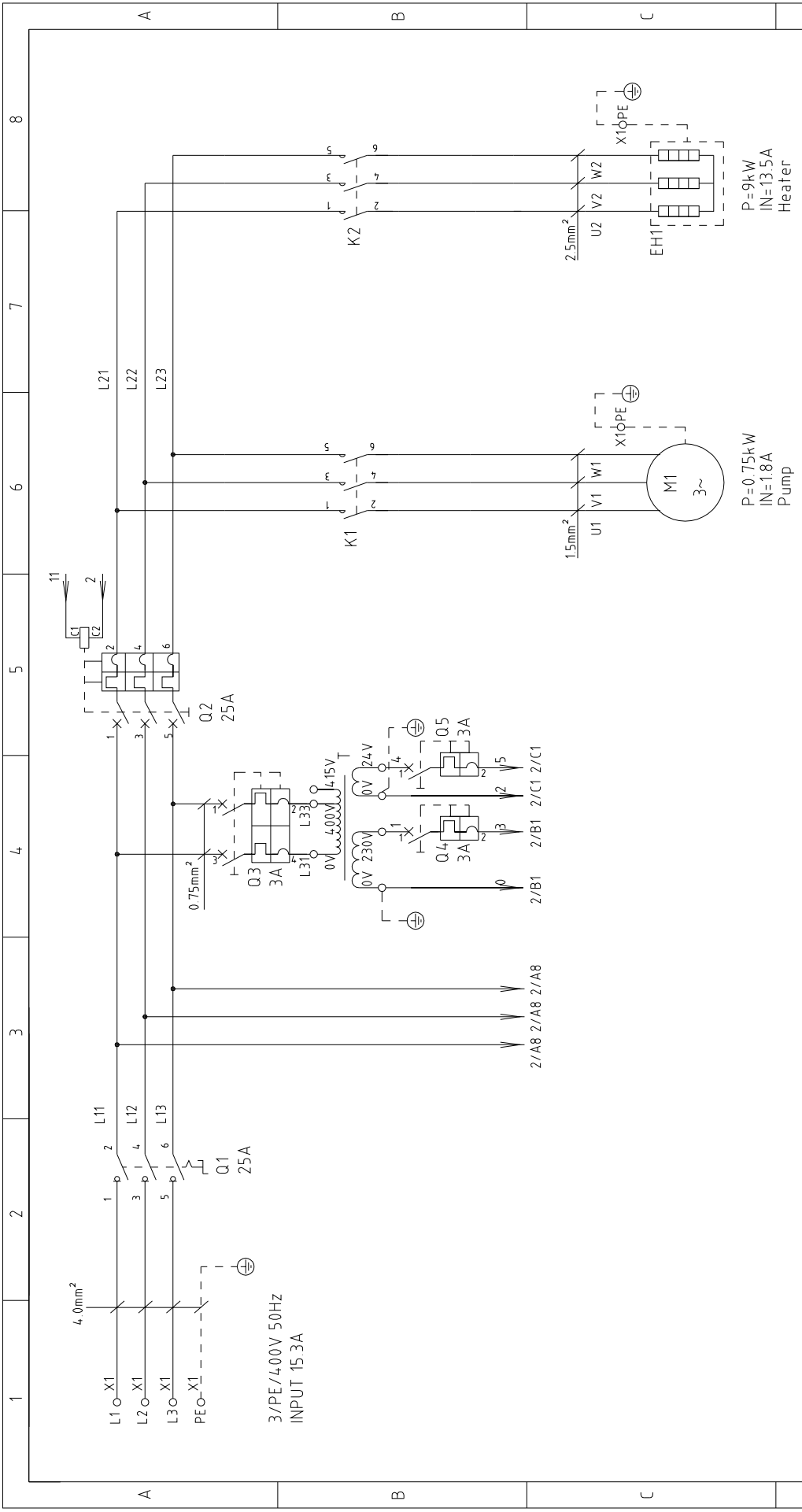
STM-607W	版本	Ver.F
STM-607MW	版本	Ver.E
STM-607WA	版本	Ver.E

Technical requirements: Pump and pipe heater should be directly connected to the output terminals of contactor and thermal overload relay.

D	Mark	Before modification	After modification	Modified by	Date	Checked by	Proofread by	Designer	Drawer	Version	H	Title	STM-607W	Drawing NO	STM-607W-CE-4.00V-H-3	Scale	Standard	CE	Page	3	Totally	5	Pages		
					20180730							Electrical Components Layout													
												<b>SHINI</b>													
												信易電熱機械股份有限公司 Shini Plastics Technologies, Inc.													

1	2	3	4	5	6	7	8	
NO.	Symbol	Name	Manufacturer	Type	Specification	Number	Material number	Remark
1	Q1	Main power switch	ERATON	TO-2-1/EA/SVB	20A	1	YE10021160000	
2	Q2	Circuit breakers	TECO	BM-63C/3016S	16A	1	YE40301603000	
3	Q3	Excitation release	TECO	MX	24VAC	1	YE40024000000	A
4	Q4 Q5	Circuit breakers	TECO	BM-63C/2003S 2P	3A	1	YE40200203000	
5	Q4 Q5	Circuit breakers	TECO	BM-63C/1003S 1P	3A	2	YE40100203000	
6	K1	Contactors	SIEMENS	3RT6015-1AB01	24VAC	1	YE00601502500	
7	K2	Contactors	SIEMENS	3RT6018-1AB01	24VAC	1	YE00601802500	
8	K4	Middle relay	HONEYWELL	GR-2C-AC24V	24VAC	1	YE03022400300	(4)
9	T	Transformer	JIUXIN	IN=400V/415V OUT=24V/230V	80VA/500mA	1	YE70040007200	
10	S1	Thermocouple	SHINI	----	K	1	----	(1)
11	S2 S3	Thermocouple	SHINI	----	K	2	----	(1)(2)
12	S4	Overheat protector	----	----	----	1	----	(1)
13	S5	HI-LO pressure switch	----	----	----	1	----	(1)
14	S6	Communication interface board RS-485 (double Dsub-9pin connector)	YUYUN	----	PCS	1	YE90048501200	
15	PC1 A	Shell RS485(SAL-700G-A-19)0	BINGHENG	----	PCS	1	YR40048500000	
16	PC1 A	Circuit board	HANYOUNGNUX	STM100-21 (含通讯)	180~4.30V 50/60Hz	1	YE811844300200	
17	H1	Buzzer	JINGKANG	PK-35A	24VAC/DC	1	YE840035000600	(1)
18	Y1	Solenoid valve	----	----	24VAC	1	----	(1)
19	Y2	Solenoid valve	----	----	24VAC	1	----	(1)(4)
20	X1	Terminal board	HONEYWELL	SK2.5	----	13	YE60002503200	
21	Terminal board	Terminal board	HONEYWELL	SK2.5PE	----	5	YE60002503400	
22	Terminal board	Terminal board	HONEYWELL	SK2.5	----	2	YE60002503200	(4)
23	Terminal board	Terminal board	HONEYWELL	SK2.5PE	----	1	YE60002503400	(4)
24	M1	Motor	SHINI	TP-55	400V 50Hz 0.55kW	1	----	(1)
25	M1	Motor	SHINI	MP-55	400V 50Hz 0.55kW	1	----	(1)(3)
STM-607W 版本 Ver.F			STM-607W A 版本 Ver.E		STM-607W A 版本 Ver.E			Notes: (1)Means it's not the material inside the control box.(2)Means equipped with function of displaying water outlet and return water temperature. (3)Means equipped with magnetic pump. (4)Means optional air-blowing cleaning function.
D			Title	Drawing NO	Scale	Page	4	8
			Electrical Components List 1	STM-607W	STM-607W-CE-4.00V-H-4	Standard	CE	Totally 5 Pages
Mark			Before modification	Modified by	Modify date	Checked by	Voltage	400V
			20180730	Date	20180730	Date	Frequency	50HZ
			SHINI	信易电热机械股份有限公司	Shini Plastics Technologies, Inc.	SHINI	SHINI	SHINI

1		2		3		4		5		6		7		8	
NO.	Symbol	Name	Manufacturer	Type	Specification	Number	Material number	Remark							
26	EH	Heater	SHINI	----	4.00V 50Hz 6kW	1	----	(1)							
27		Terminal fittings E/GKseries(honeywell)	HONEYWELL	----	PCS	6	YE60000003900								
A															
B															
C															
D															
STM-607W 版本 Ver.F STM-607MW 版本 Ver.E STM-607WA 版本 Ver.E										Notes: (1)Means it's not the material inside the control box.(2)Means equipped with function of displaying water outlet and return water temperature.(3)Means equipped with magnetic pump.(4)Means optional air-blowing cleaning function.					
		Title		Version		H		Drawing NO		Scale		Page		5	
		STM-607W		STM-607W		Electrical Components List 2		STM-607W-CE-4.00V-H-5		Standard		CE		Totally 5 Pages	
Mark		Before modification		Modified by		Modify date		Date		Voltage		Frequency		400V 50HZ	
		After modification				20180730									
										SHINI		信易电热机械股份有限公司 Shini Plastics Technologies, Inc.			
1	2	3	4	5	6	7	8								



STM-910W	版本	Ver.F
STM-910MW	版本	Ver.E
STM-910WA	版本	Ver.E

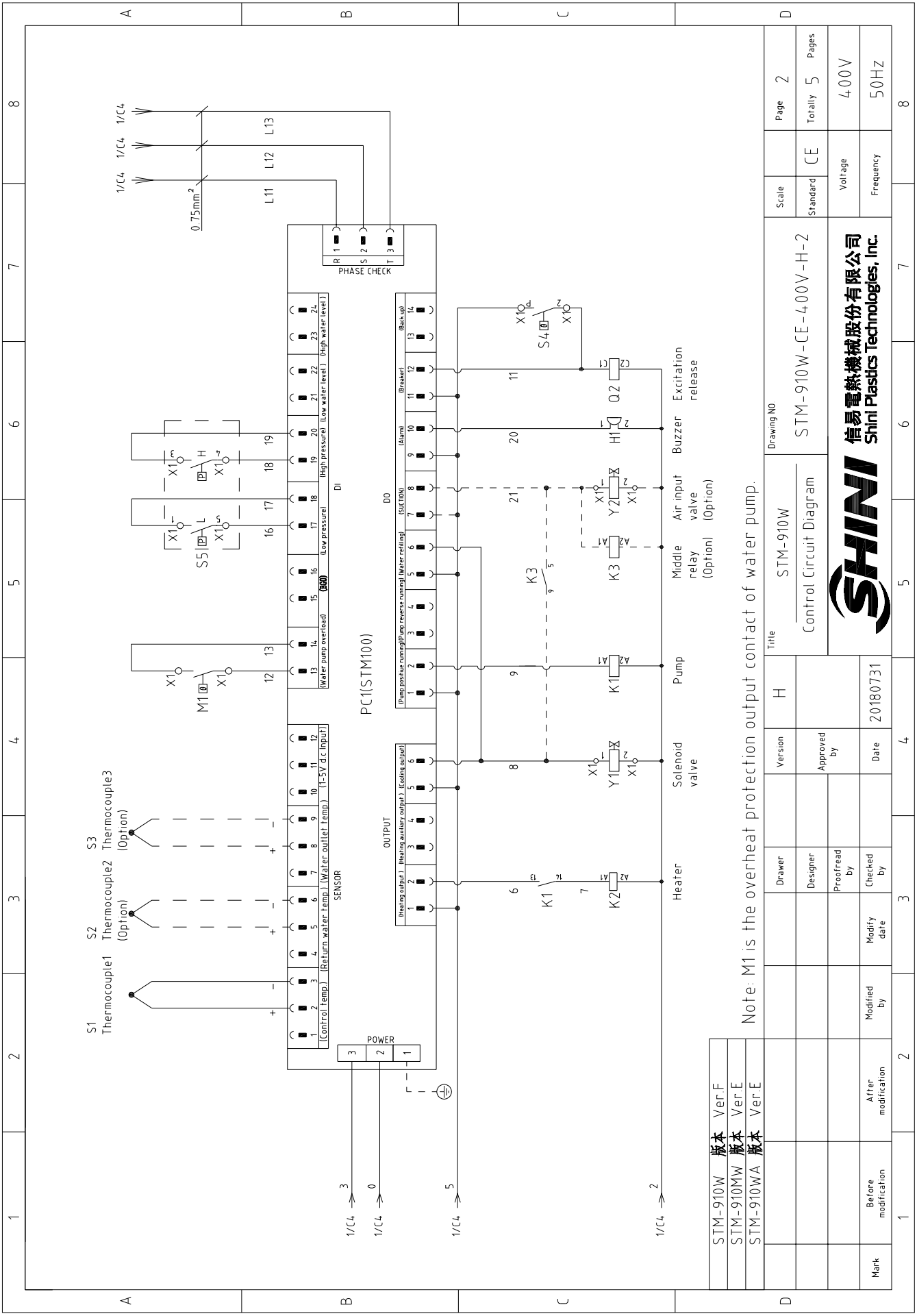
When equipped with magnetic pump P=1.0KW IN=18A

D	Mark	Before modification	Modified by	2	3	4	5	6	7	8
	After modification	Modify date	Checked by	20180731						
D	Drawer	Designer	Proofread by							
	Version	Approved by	H							
Title		STM-910W		Drawing NO		STM-910W-CE-4.00V-H-1		Scale	CE	Page 1
Main Circuit Diagram								Standard	Totally 5	Pages
Mark		Before modification	Modified by	2	3	4	5	6	7	8
Voltage								400V		
Frequency								50HZ		



P=0.75kW  
IN=18A  
Pump

P=9kW  
IN=13.5A  
Heater



STM-910W	版本	Ver.F
STM-910MW	版本	Ver.E
STM-910WA	版本	Ver.E

Note: M1 is the overheat protection output contact of water pump.

Mark	Before modification	Modified by	Date	20180731	Title	STM-910W	Drawing NO	STM-910W-CE-400V-H-2	Scale	Standard	CE	Page	2
	After modification	Modified by	Date	20180731		Control Circuit Diagram		SHINI		Shini Plastics Technologies, Inc.	Standard		CE
Mark	Before modification	Modified by	Date	20180731	Version	H	Approved by		Frequency	50HZ	Voltage	400V	
					Drawer		Designer						
					Proofread by		Checked by						

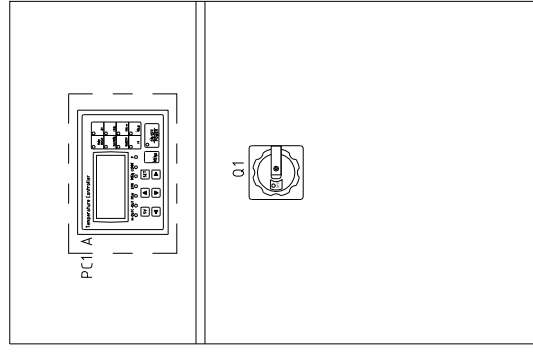
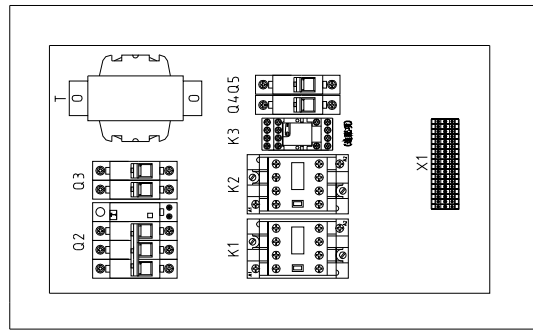
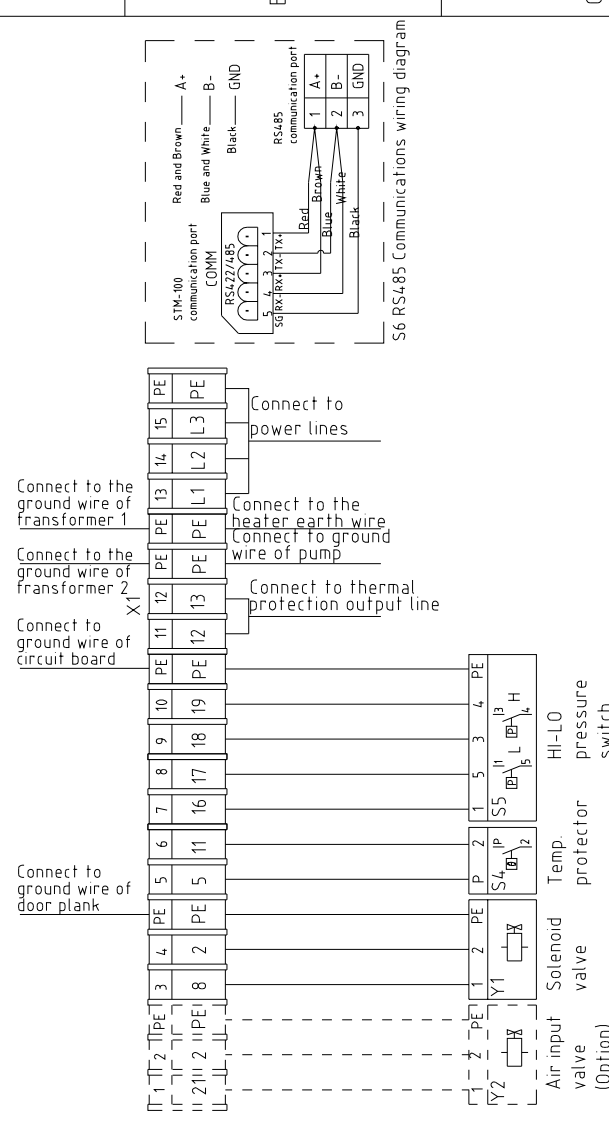


信易电热机械股份有限公司  
Shini Plastics Technologies, Inc.

A

B

C



STM-910W	版本	Ver.F
STM-910MW	版本	Ver.E
STM-910WA	版本	Ver.E

Technical requirements: Pump and pipe heater should be directly connected to the output terminals of contactor and thermal overload relay.

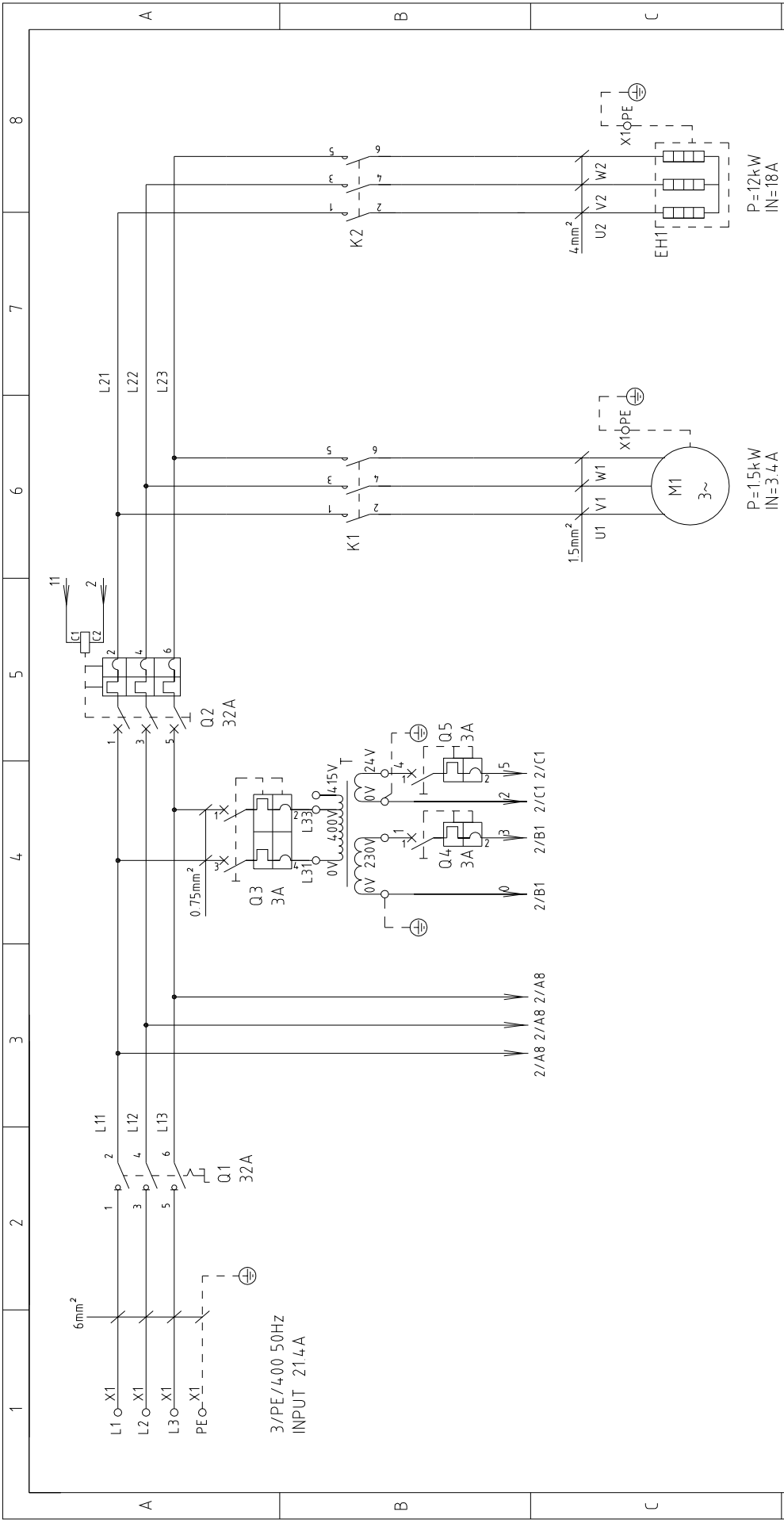
D	Scale	Standard	CE	Page	3
	Standard	CE	Totally	5	Pages
D	Title		STM-910W	Drawing NO	
	Electrical Components Layout		STM-910W-CE-4.00V-H-3	Voltage	
D	Approved by			Frequency	
	Date		20180731	400V	
D	Modified by			50HZ	
	Modify date			8	
SHINI			信易電熱機械股份有限公司 Shini Plastics Technologies, Inc.		



1	2		3	4	5	6	7	8
NO.	Symbol	Name	Manufacturer	Type	Specification	Number	Material number	Remark
1	Q1	Main power switch	EATON	TO-2-1/EA/SVB	20A	1	YE10021160000	
2	Q2	Circuit breakers	TECO	BM-63C/3025S	25A	1	YE40302503000	
3	Q3	Excitation release	TECO	MX	24VAC	1	YE40024000000	A
4	Q4 Q5	Circuit breakers	TECO	BM-63C/2003S 2P	3A	1	YE40200203000	
5	K1	Circuit breakers	TECO	BM-63C/1003S 1P	3A	2	YE40100203000	
6	K2	Contactors	SIEMENS	3RT6015-1AB01	24VAC	1	YE00601502500	
7	K3	Contactors	SIEMENS	3RT6025-1AC20	24VAC	1	YE00602502600	
8	T	Middle relay	HONEYWELL	GR-2C-AC24V	24VAC	1	YE03022400300	(4)
9	S1	Transformer	JIUXIN	IN=400V/415V OUT=24V/230V	80VA/350mA	1	YE70040007200	
10	S2 S3	Thermocouple	SHINI	----	K	1	----	(1)
11	S4	Thermocouple	SHINI	----	K	2	----	(1)(2)
12	S5	Overheat protector	----	----	----	1	----	(1)
13	S6	HI-LO pressure switch	----	----	----	1	----	(1)
14	PC1 A	Communication interface board RS-485 (double Dsub-9pin connector)	YUYUN	----	PCS	1	YE90048501200	
15	H1	Shell RS485(SAL-700G-A-19)0	BINCHENG	----	PCS	1	YR40048500000	
16	Y1	Circuit board	HANYOUNGUX	STM100-21 (含通讯)	180~4.30V 50/60Hz	1	YE81184300200	
17	Y2	Buzzer	JINGKANG	PK-35A	24VAC/DC	1	YE84003500600	(1)
18	X1	Solenoid valve	----	----	24VAC	1	----	(1)(4)
19	X2	Solenoid valve	----	----	24VAC	1	----	
20	X3	Terminal board	HONEYWELL	SK2.5	----	10	YE60002503200	
21	X4	Terminal board	HONEYWELL	SK2.5PE	----	4	YE60002503400	
22	X5	Terminal board	HONEYWELL	SK4	----	3	YE60000403200	
23	X6	Terminal board	HONEYWELL	GK5PE	----	1	YE60000403500	
24	X7	Terminal board	HONEYWELL	SK2.5	----	2	YE60002503200	(4)
25	X8	Terminal board	HONEYWELL	SK2.5PE	----	1	YE60002503400	(4)
STM-910W 版本 Ver.F STM-910MW 版本 Ver.E STM-910WA 版本 Ver.E Notes: (1)Means it's not the material inside the control box (2)Means equipped with function of displaying water outlet and return water temperature (3)Means equipped with magnetic pump (4)Means optional air-blowing cleaning function.								
D				Title	Drawing NO	Scale	Page	4
				Electrical Components List 1	STM-910W	Standard	CE	Totally 5
				Designer	Approved by	Date	Voltage	400V
				Proofread by	Date	Frequency	50HZ	
Mark				Before modification	After modification	Modify date	Checked by	20180731
1	2	3	4	5	6	7	8	



1		2		3		4		5		6		7		8	
No.	Symbol	Name	Manufacturer	Type	Specification	Number	Material number	Remark							
26	M1	Motor	SHINI	TP-75	400V 50Hz 0.75kW	1	----	(1)							
27	M1	Motor	SHINI	MP-100	400V 50Hz 1.0kW	1	----	(1)(3)							
28	EH	Heater	SHINI	----	400V 50Hz 9kW	1	----	(1)							
29		Terminal fittings E/GKseries(honeywell)	HONEYWELL	----	PCS	6	YE60000003900								
A															
B															
C															
D															
STM-910W 版本 Ver.F		STM-910W 版本 Ver.E		STM-910WA 版本 Ver.E		Notes: (1)Means it's not the material inside the control box (2)Means equipped with function of displaying water outlet and return water temperature. (3)Means equipped with magnetic pump. (4)Means optional air-blowing cleaning function.									
		Title		Version		H		Drawing NO		Scale		Page		5	
		Electrical Components List 2		STM-910W		STM-910W-CE-400V-H-5		Standard		CE		Voltage		400V	
Mark		Before modification		After modification		Modified by		Modify date		Checked by		Date		20180731	
		SHINI		SHINI PLASTICS TECHNOLOGIES, INC.											
1															

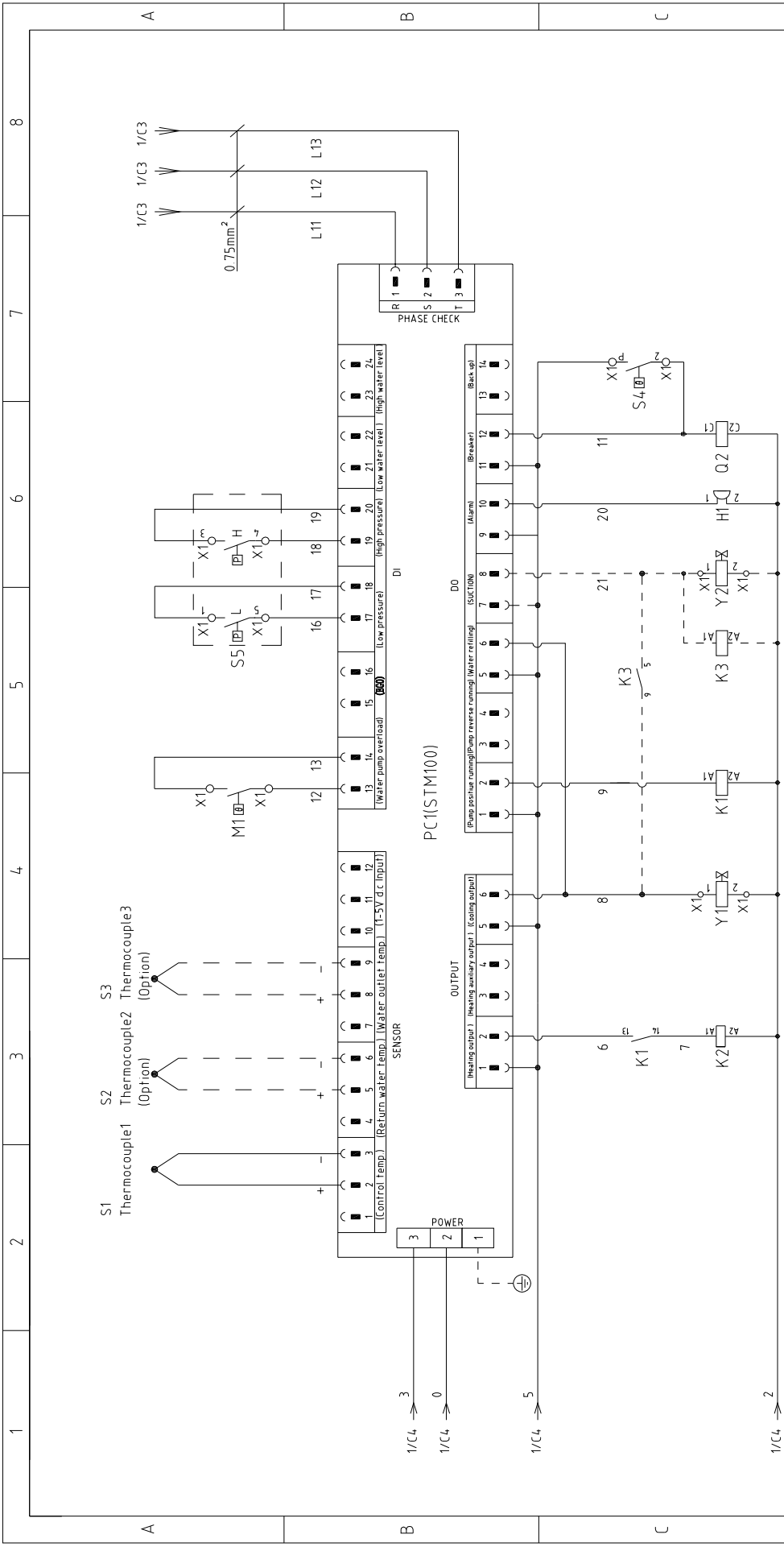


STM-1220W	版本	Ver.F
STM-1220MW	版本	Ver.F
STM-1220WA	版本	Ver.E

When equipped with magnetic pump P=1.0KW IN=1.8A

D	Mark	Before modification	After modification	Modified by	Modify date	Checked by	Proofread by	Designer	Drawer	Version	H	Title	STM-1220W	Drawing NO	STM-1220W-CE-4.00V-H-1	Scale	Standard	CE	Page	1	Totally	5	Pages

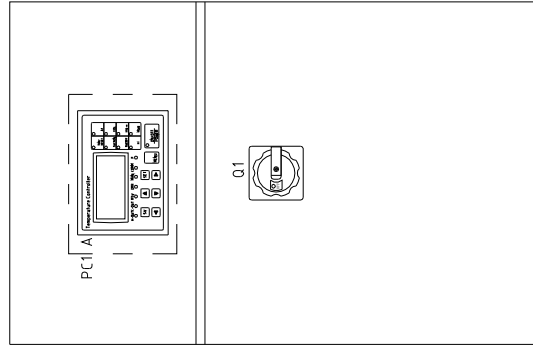
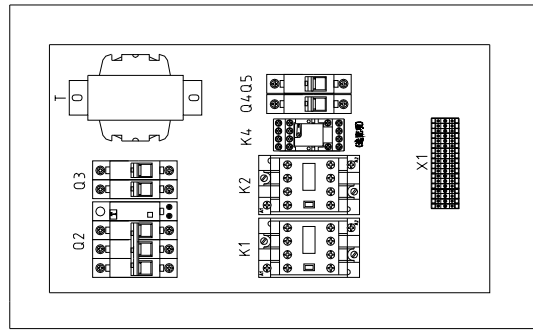
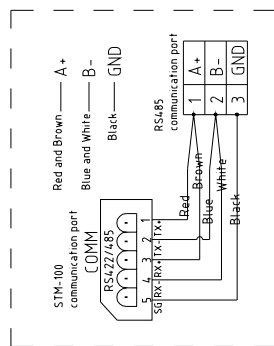
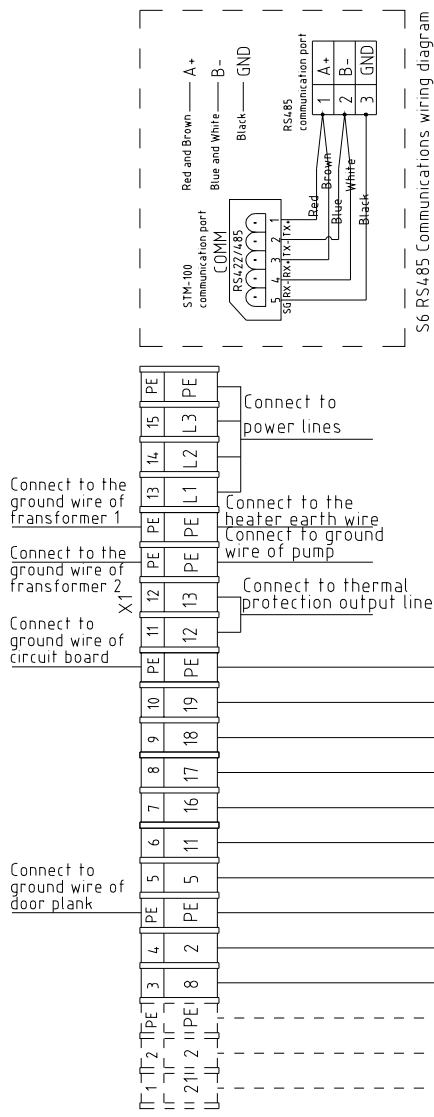




STM-1220W	版本	Ver.F
STM-1220MW	版本	Ver.F
STM-1220WA	版本	Ver.E

Note: M1 is the overheat protection output contact of water pump.


Title		Drawing NO	
STM-1220W		STM-1220W-CE-400V-H-2	
Version		Scale	
H		Standard	
Approved by		CE	
Date		Voltage	
20180801		400V	
Checked by		Frequency	
2		50HZ	
Modified by		Page	
3		2	
Designer		Totally	
4		5	
Proofread by		Pages	
5		8	
Drawer		SHINI	
6		信易电热机械股份有限公司	
7		Shini Plastics Technologies, Inc.	
8		SHINI	



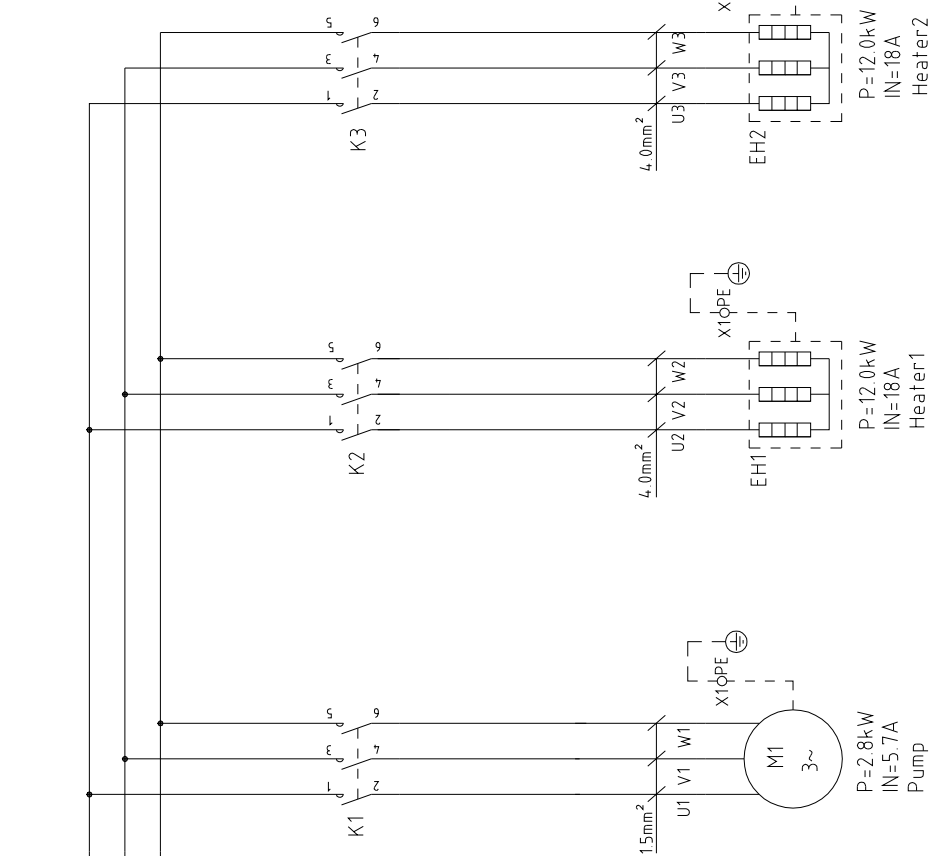
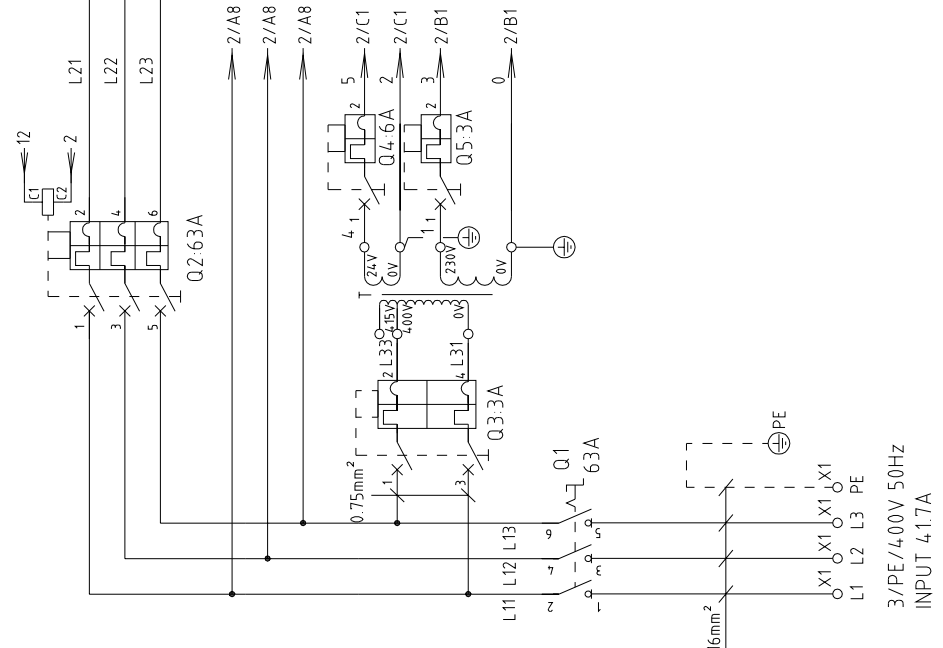
STM-1220W	版本	Ver.F
STM-1220MW	版本	Ver.F
STM-1220WA	版本	Ver.E

Technical requirements: Pump and pipe heater should be directly connected to the output terminals of contactor and thermal overload relay.

Mark	Before modification	After modification	Modified by	Modify date	Checked by	Proofread by	Designer	Drawer	Version	H	Title	STM-1220W	Drawing NO	STM-1220W-CE-4.00V-H-3	Scale	Standard	CE	Page	3	Totally	5	Pages	
				20180801					Approved by		Electrical Components Layout												
												Voltage		400V		Frequency		50HZ					
												SHINI		信易电热机械股份有限公司		Shini Plastics Technologies, Inc.							

1		2		3		4		5		6		7		8				
NO.	Symbol	Name	Manufacturer	Type	Specification	Number	Material number	Remark										
1	Q1	Main power switch	EATON	P1-32/EA/SVB	32A	1	YE10323200000											
2	Q2	Circuit breakers	TECO	BM-63C/3032S	32A	1	YE40303203000											
3	Q3	Excitation release	TECO	MX	24VAC	1	YE40024000000											
4	Q4	Circuit breakers	TECO	BM-63C/2003S 2P	3A	1	YE40200203000											
5	Q5	Circuit breakers	TECO	BM-63C/1003S 1P	3A	2	YE40100203000											
6	K1	Contactors	SIEMENS	3RT6015-1AB01	24VAC	1	YE00601502500											
7	K2	Contactors	SIEMENS	3RT6026-1AC20	24VAC	1	YE00602602600											
8	K4	Middle relay	HONEYWELL	GR-2C-AC24V	24VAC	1	YE03022400300	(4)										
9	T	Transformer	JIUXIN	IN=400V/415V OUT=24V/230V	80VA/ 350MA	1	YE70040007200											
10	S1	Thermocouple	SHINI	----	----	1	----	(1)										
11	S2	S3	SHINI	----	----	2	----	(1)(2)										
12	S4	Overheat protector	----	----	----	1	----	(1)										
13	S5	HI-LO pressure switch	----	----	----	1	----	(1)										
14	S6	Communication interface board RS-485 (double Dsub-9pin connector)	YUYUN	----	PCS	1	YE90048501200											
15	PC1	Shell RS485(SAL-700G-A-19)0	BINCHENG	----	PCS	1	YR40048500000											
16	H1	Circuit board	HANYOUNGUX	STM100-21 (含通讯)	180~430V 50/60Hz	1	YE81184300200											
17	Y1	Buzzer	JINGKANG	PK-35A	24VAC/DC	1	YE840035000600	(1)										
18	Y2	Solenoid valve	----	----	24VAC	1	----	(1)										
19	Y2	Solenoid valve	----	----	24VAC	1	----	(1)(4)										
20	X1	Terminal board	HONEYWELL	SK2.5	----	10	YE60002503200											
21		Terminal board	HONEYWELL	SK2.5PE	----	3	YE60002503400											
22		Terminal Board	HONEYWELL	GK5PE	----	1	YE60000403500											
23		Terminal board	HONEYWELL	GK6	----	3	YE60000603200											
24		Terminal board	HONEYWELL	GK6PE	----	1	YE60000603500											
25		Terminal board	HONEYWELL	SK2.5	----	2	YE60002503200	(4)										
STM-1220W 版本 Ver.F STM-1220MW 版本 Ver.F STM-1220WA 版本 Ver.E Notes: (1)Means it's not the material inside the control box.(2)Means equipped with function of displaying water outlet and return water temperature. (3)Means equipped with magnetic pump. (4)Means optional air-blowing cleaning function.																		
D				Drawer			Version	H	Title		Drawing NO		Scale		Page			
				Designer			Approved by		Electrical Components List 1		STM-1220W-CE-400V-H-4		Standard		CE			
				Proofread by			Date	20180801	 信易电热机械股份有限公司 Shini Plastics Technologies, Inc.		Voltage		400V		Frequency		50HZ	
Mark	Before modification	After modification	Modified by	Modify date														
1		2	3	4	5	6	7	8										



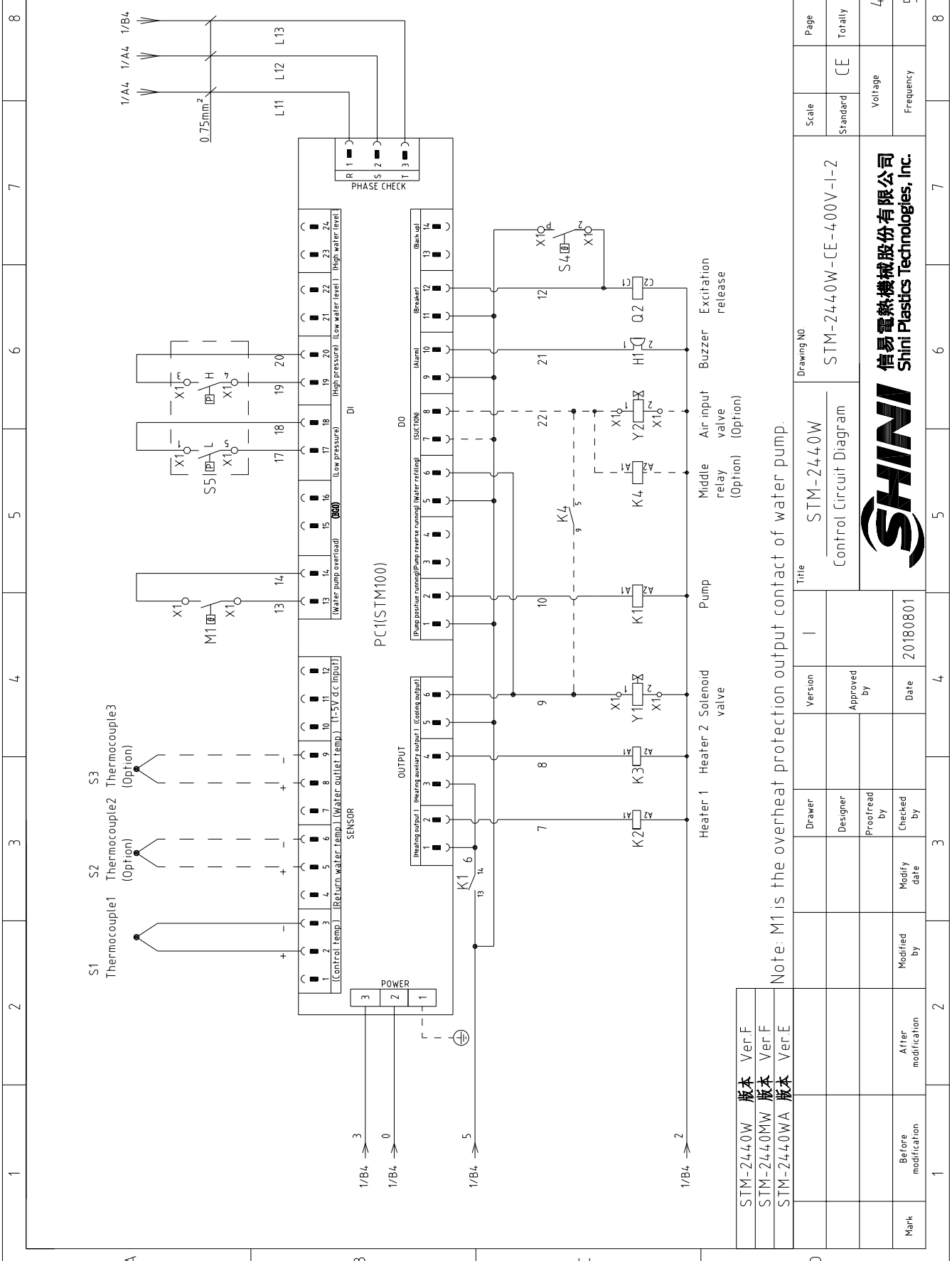


STM-2440W	版本	Ver.F
STM-2440MW	版本	Ver.F
STM-2440WA	版本	Ver.E

When equipped with magnetic pump P=2.8KW IN=6.5A

D	Title	STM-2440W	Scale	Page 1
		Main Circuit Diagram	Standard CE	Totally 5 Pages
Mark	Drawing NO	STM-2440W-CE-400V-1-1	Voltage	400V
			Frequency	50Hz
Before modification	After modification	20180801	SHINI 信易电热机械股份有限公司 Shini Plastics Technologies, Inc.	
1	2	3	4	5
1	2	3	4	5
1	2	3	4	5



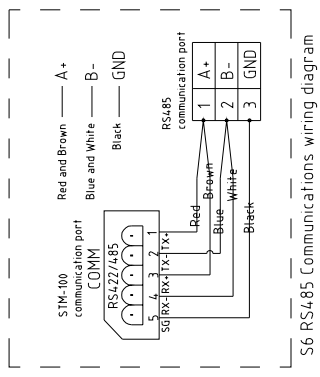
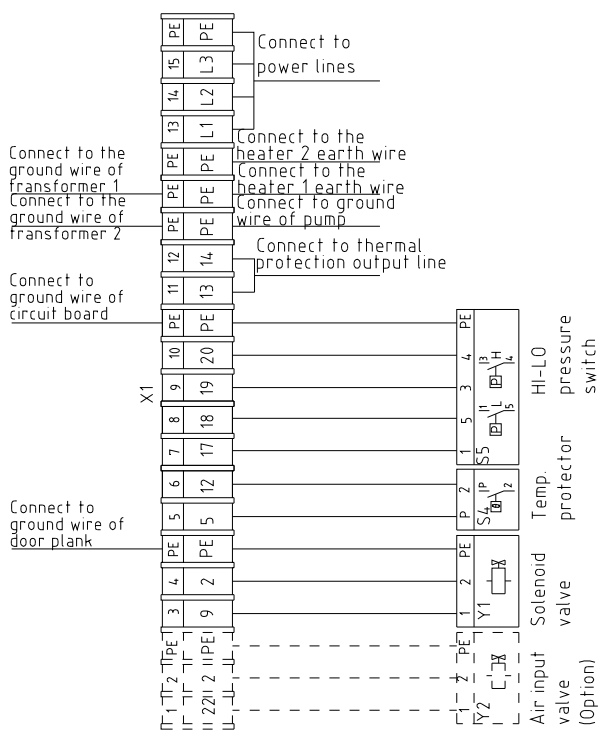
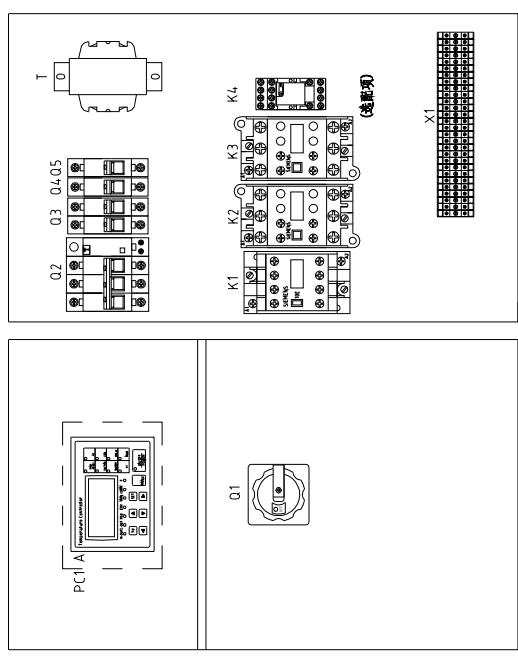


STM-2440W	版本	Ver.F
STM-2440MW	版本	Ver.F
STM-2440WA	版本	Ver.E

Note: M1 is the overheated protection output contact of water pump.

Mark	Before modification	Modified by	20180801	Version	I	Title	STM-2440W	
	After modification	Checked by	Date				Control Circuit Diagram	
Page	2	Standard	CE		Scale	Drawing NO	STM-2440W-CE-400V-1-2	
	5		Voltage				400V	
Pages	5	Frequency	50Hz		Totally	Page	2	
	8		Frequency				50Hz	







STM-2440W	版本	Ver.F
STM-2440MW	版本	Ver.F
STM-2440WA	版本	Ver.E

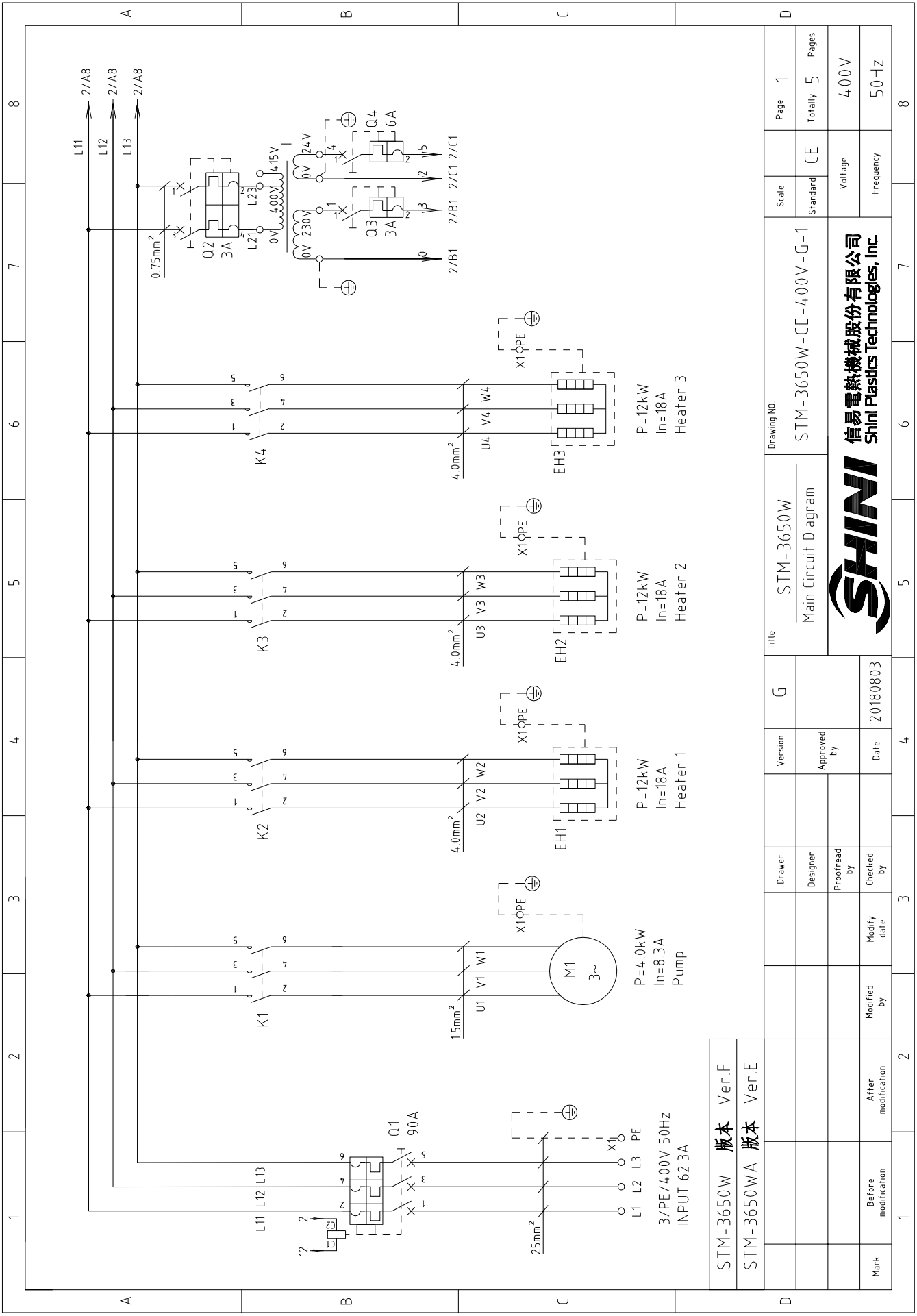
Technical requirements: Pump and pipe heater should be directly connected to the output terminals of contactor and thermal overload relay.

D	Version	1	Title	STM-2440W	Drawing NO	3
	Approved By		Electrical Components Layout	STM-2440W-CE-400V-1-3	Standard	Page
Mark	Modified by		Date	20180801	Voltage	Frequency
	After modification					
				Scale	Standard	Totally
				CE		5
				Voltage		400V
				Frequency		50Hz
				Page		3
				Totally		5
				Pages		5
				Voltage		400V
				Frequency		50Hz
				Page		3
				Totally		5
				Pages		5



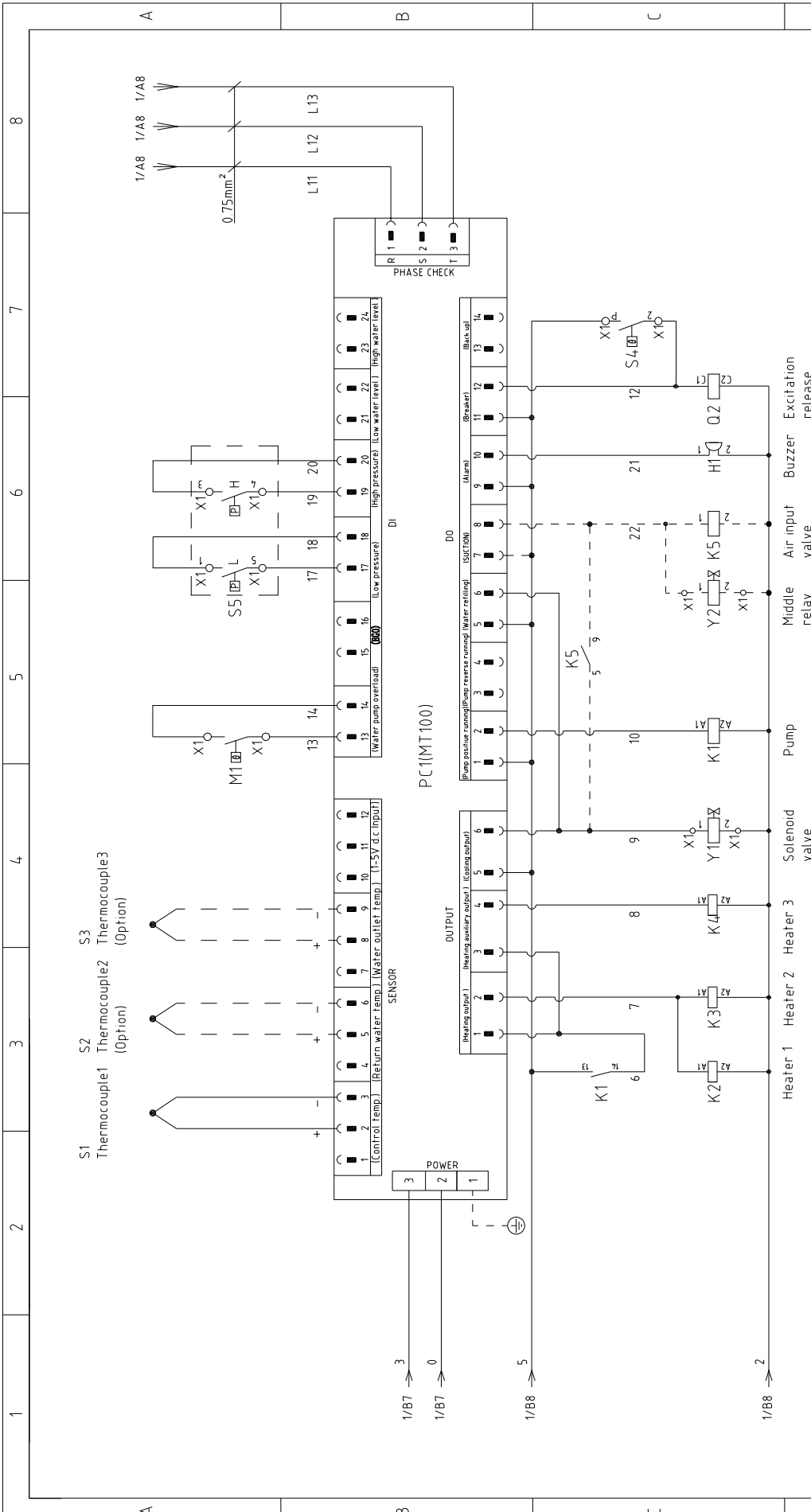
1		2		3		4		5		6		7		8	
NO.	Symbol	Name	Manufacturer	Type	Specification	Number	Material number	Remark							
1	Q1	Main power switch	EATON	P3-63/EA/SVB	63A	1	YE10636300000								
2	Q2	Circuit breaker	TECO	BM-63C/3063S	63A	1	YE40306303000								
3	A	Release	TECO	MX	24VAC	1	YE40024000000								
4	Q3	Circuit breakers	TECO	BM-63C/2003S 2P	3A	1	YE40200203000								
5	Q4	Circuit breakers	TECO	BM-63C/1006S 1P	6A	1	YE40100600100								
6	Q5	Circuit breakers	TECO	BM-63C/1003S 1P	3A	1	YE40100203000								
7	K1	Contactors	SIEMENS	3RT6016-1AB01	24VAC	1	YE00601602500								
8	K2 K3	Contactors	SIEMENS	3RT6026-1AC20	24VAC	2	YE00602602600								
9	K4	Middle relay	HONEYWELL	GR-2C-AC24V	24VAC	1	YE03022400300	(4)							
10	T	Transformer	JUJXIN	IN=400V/415V OUT=24V/230V	120VA/350mA	1	YE70040007300								
11	S1	Thermocouple	SHINI	----	----	1	----	(1)							
12	S2 S3	Thermocouple	SHINI	----	----	2	----	(1)(2)							
13	S4	Overheat protector	----	----	----	1	----	(1)							
14	S5	HI-LO pressure switch	----	----	----	1	----	(1)							
15	S6	Communication interface board (double Dsub-9pin connector)	YUYUN	----	PCS	1	YE90048501200								
16		Shell RS485(SAL-700G-A-19)0	BINCHENG	----	PCS	1	YR40048500000								
17	PC1 A	Circuit board	HANYOUNGUX	STM100-21 (含通讯)	180-4.30V 50/60Hz	1	YE81184300200								
18	H1	Buzzer	JINGKANG	PK-35A	24VAC/DC	1	YE84003500600								
19	Y1	Solenoid valve	----	----	24VAC	1	----	(1)							
20	Y2	Solenoid valve	----	----	24VAC	1	----	(1)(4)							
21	X1	Terminal board	HONEYWELL	SK2.5	----	10	YE60002503200								
22		Terminal board	HONEYWELL	SK2.5PE	----	3	YE60002503400								
23		Terminal board	HONEYWELL	GK5PE	----	2	YE60000403500								
24		Terminal board	HONEYWELL	GK16	----	3	YE60001603200								
25		Terminal board	HONEYWELL	GK16PE	----	1	YE60001603500								
STM-2440W 版本 Ver F STM-2440MW 版本 Ver F STM-2440WA 版本 Ver E Notes: (1)Means it's not the material inside the control box (2)Means equipped with function of displaying water outlet and return water temperature. (3)Means equipped with magnetic pump. (4)Means optional air-blowing cleaning function.															
D Drawing NO STM-2440W STM-2440W-CE-400V-1-4 Electrical Components List 1  信易电热机械股份有限公司 Shini Plastics Technologies, Inc.															
Scale Standard CE Voltage 400V Page 4 Totaly 5 Pages Frequency 50HZ															
Mark Before modification After modification Modify date 20180801 1 2 3 4 5 6 7 8															

1		2		3		4		5		6		7		8						
NO.	Symbol	Name	Manufacturer	Type	Specification	Number	Material number	Remark												
26		Terminal board	HONEYWELL	SK2.5	----	2	YE60002503200	(4)												
27		Terminal board	HONEYWELL	SK2.5PE	----	1	YE60002503400	(4)												
28	M1	Motor	SHINI	TP-280	400V 50Hz 2.8kW	1	----	(1)												
29	M1	Motor	SHINI	MP-280	400V 50Hz 2.8kW	1	----	(1)(3)												
30	EH1 EH2	Heater	SHINI	----	400V 50Hz 12kW	2	----	(1)												
31		Terminal fittings E/GKseries(honeywell)	HONEYWELL	----	PCS	6	YE60000003900													
B																				
C																				
D																				
Notes: (1)Means it's not the material inside the control box.(2)Means equipped with function of displaying water outlet and return water temperature.(3)Means equipped with magnetic pump.(4)Means optional air-blowing cleaning function.																				
STM-2440W 版本 Ver.F			STM-2440Mw 版本 Ver.F			STM-2440WA 版本 Ver.E			Title STM-2440W			Drawing NO STM-2440W-CE-400V-1-5			Scale Standard			Page 5		
Mark Before modification			After modification			Modified by			Modified date			Designer			Proofread by			Voltage 400V		
Mark						20180801			Date			Approved by			Frequency 50HZ					
 <b>信易電熱機械股份有限公司</b> <b>Shini Plastics Technologies, Inc.</b>																				




STM-3650W 版本 Ver.F  
 STM-3650WA 版本 Ver.E

D	Scale	Standard	CE	Page	1	D
	Standard		CE	Totally	5	
Title			Drawing NO		STM-3650W-CE-400V-G-1	
Version			G		STM-3650W	
Designer			Approved by		Main Circuit Diagram	
Proofread by			Date		20180803	
Checked by			Date		20180803	
Modified by			Date		20180803	
Mark			After modification		Before modification	
Voltage			Frequency		400V 50HZ	
SHINI			信易电热机械股份有限公司		Shini Plastics Technologies, Inc.	
1			2		3	
4			5		6	
7			8		8	



STM-3650W 版本 Ver.F  
 STM-3650WA 版本 Ver.E

Note: M1 is the overheat protection output contact of water pump.

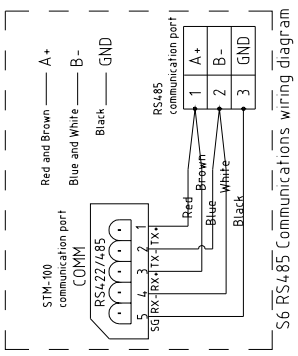
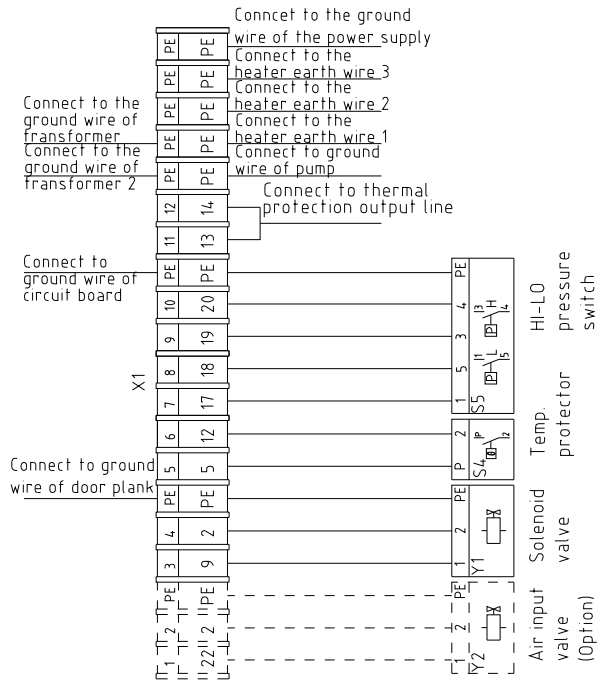
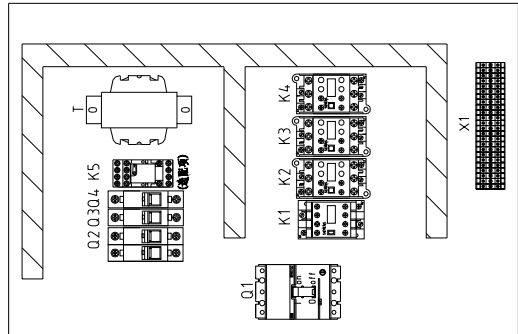
Title		Drawing No		Scale	Page
STM-3650W		STM-3650W-CE-400V-G-2		Standard	2
Version		Control Circuit Diagram		Totally	5
Approved by				Voltage	400V
Date		20180803		Frequency	50HZ
Modified by					
Checked by					
Proofread by					
Designer					
Drawer					
					
信易電熱機械股份有限公司 Shini Plastics Technologies, Inc.					
Mark		Before modification		8	
Modified by					
Checked by					
Proofread by					
Date					
Approved by					
Version		G			
Title		STM-3650W			

A

B

C

D



STM-3650W 版本 Ver.F  
STM-3650WA 版本 Ver.E

Technical requirements (1) Pump and pipe heater should be directly connected to the output terminals of contactor and thermal overload relay.  
(2) Main power inlet directly connects to breaker interlock without passing by terminal board.

Mark	Before modification	After modification	Modified by	Modify date	Checked by	Proofread by	Designer	Drawer	Version	G	Title	STM-3650W Electrical Components Layout	Drawing NO	STM-3650W-CE-400V-G-3	Scale	Standard	CE	Page	3	Totally	5	Pages	Voltage	400V	Frequency	50HZ
------	---------------------	--------------------	-------------	-------------	------------	--------------	----------	--------	---------	---	-------	---	------------	-----------------------	-------	----------	----	------	---	---------	---	-------	---------	------	-----------	------



1		2		3		4		5		6		7		8	
NO.	Symbol	Name	Manufacturer	Type	Specification	Number	Material number	Remark							
1	Q1	Breaker interlock	ABB	A1A125TMF90/9003PFF	90A	1	YE41109200000								
2		Release	ABB	SOR-C	24V-30V AC/DC	1	YE40243000900								
3	Q2	Circuit breakers	TECO	BM-63C/2003S 2P	3A	1	YE40200203000								
4	Q3	Circuit breakers	TECO	BM-63C/1003S 1P	3A	1	YE40100203000								
5	Q4	Circuit breakers	TECO	BM-63C/1006S 1P	6A	1	YE40100600100								
6	K1	Contactors	SIEMENS	3RT6017-1AB01	24VAC	1	YE00601702500								
7	K2 K3 K4	Contactors	SIEMENS	3RT6027-1AC20	24VAC	3	YE00602702600								
8	K5	Middle relay	HONEYWELL	GR-2C-AC24V	24VAC	1	YE03022400300	(3)							
9	T	Transformer	JIUXIN	IN=400V OUT=24VAC/230V	180VA/350mA	1	YE70040005600								
10	S1	Thermocouple	SHINI	----	----	1	----	(1)							
11	S2 S3	Thermocouple	SHINI	----	----	2	----	(1)(2)							
12	S4	Overheat protector	----	----	----	1	----	(1)							
13	S5	HI-LO pressure switch	----	----	----	1	----	(1)							
14	S6	Communication interface board RS-485 (double Dsub-9pin connector)	YUYUN	----	PCS	1	YE90048501200								
15		Shell RS485(SAL-700G-A-19)0	BINGCHENG	----	PCS	1	YR40048500000								
16	PC1 A	Circuit board	HANYOUNGNUX	STM100-21 (含通讯)	180~430V 50/60HZ	1	YE81184300200								
17	H1	Buzzer	JINGKANG	PK-35A	24VAC/DC	1	YE84003500600								
18	Y1	Solenoid valve	----	----	24VAC 50/60Hz	1	----	(1)							
19	Y2	Solenoid valve	----	----	24VAC	1	----	(1)(3)							
20	X1	Terminal board	HONEYWELL	SK2.5	----	10	YE60002503200								
21		Terminal board	HONEYWELL	SK2.5PE	----	3	YE60002503400								
22		Terminal board	HONEYWELL	SK2.5	----	2	YE60002503200	(3)							
23		Terminal board	HONEYWELL	SK2.5PE	----	1	YE60002503400	(3)							
24		Terminal board	HONEYWELL	GK5PE	----	3	YE60000403500								
25		Terminal board	HONEYWELL	GK35PE	----	1	YE60003503500								
STM-3650W 版本 Ver.F		STM-3650WA 版本 Ver.F		Notes: (1)Means it's not the material inside the control box (2)Means equipped with function of displaying water outlet and return water temperature. (3)Means equipped with magnetic pump. (4)Means optional air-blowing cleaning function.											
				Title		Drawing NO		Scale		Page		4		8	
				Electrical Components List 1		STM-3650W		Standard		CE		Totally		5 Pages	
				Designer		Approved by		Voltage		400V		Frequency		50HZ	
Mark				Before modification		Modified by		Modify date		Date		20180803			
1		2		3		4		5		6		7		8	



信易电热机械股份有限公司  
Shini Plastics Technologies, Inc.



1		2		3		4		5		6		7		8	
NO.	Symbol	Name	Manufacturer	Type	Specification	Number	Material number	Remark							
26	M1	Motor	SHINI	TP-400	400V 50Hz 4.0kW	1	----	(1)							
27	EH1 EH2 EH3	Heater	SHINI	----	400V 50Hz 12kW	3	----	(1)							
28		Terminal fittings E/GKseries(honeywell)	HONEYWELL	----	PCS	6	YE60000003900	A							
									B						
									C						
									D						
Notes: (1)Means it's not the material inside the control box (2)Means equipped with function of displaying water outlet and return water temperature (3)Means equipped with magnetic pump (4)Means optional air-blowing cleaning function															
STM-3650W 版本 Ver.F		STM-3650WA 版本 Ver.F		Title		Version		Drawing NO		Scale		Page		5	
				G		Approved by		STM-3650W		STM-3650W-CE-400V-G-5		Standard		CE	
				Date		20180803		Electrical Components List 2		Voltage		400V		Frequency	
Mark		Before modification		Modified by		Modify date		Checked by		Proofread by		Designer		Drawer	

