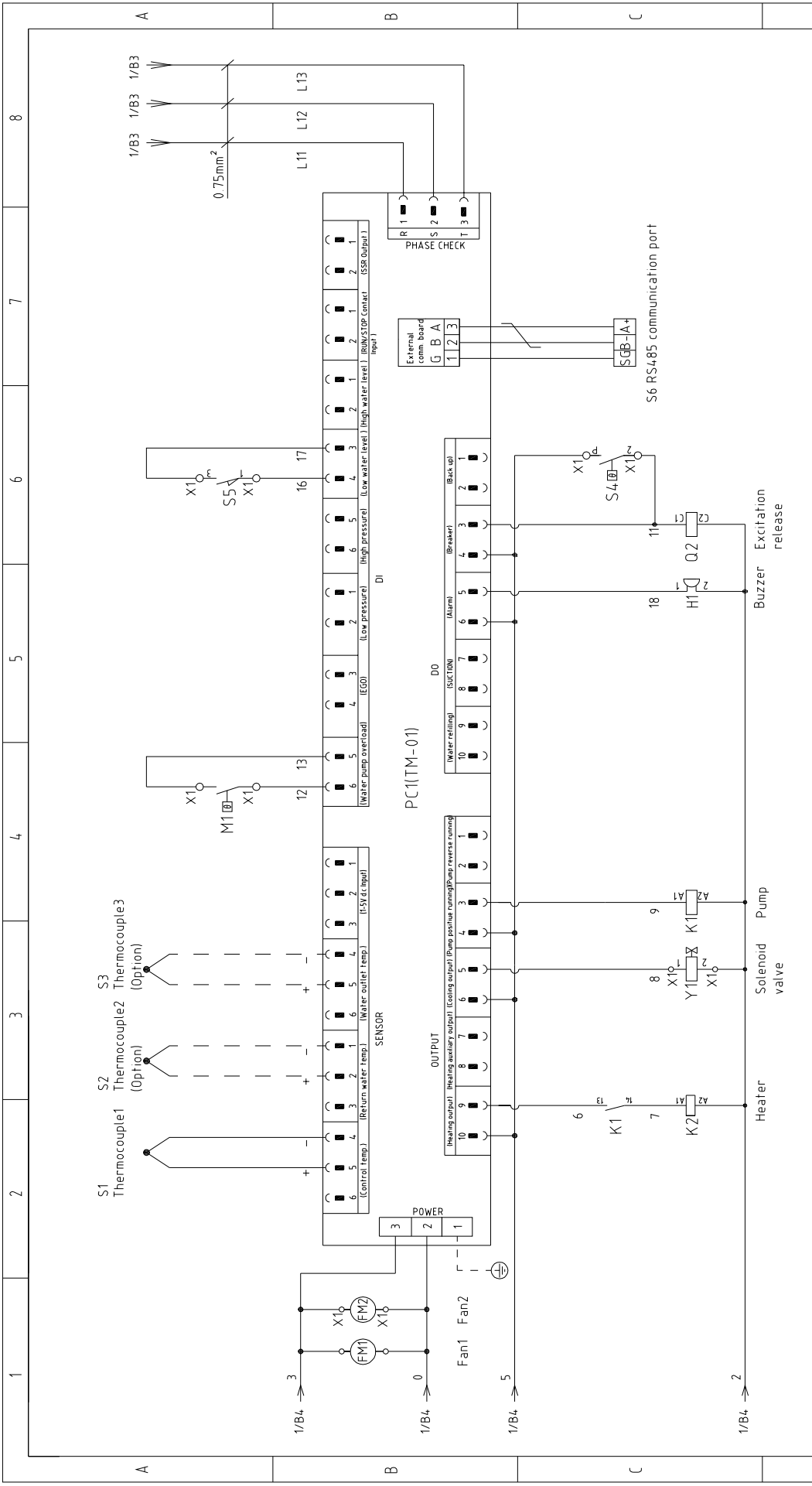


版本	Ver.F	Title		Drawing NO		Scale		Page 1	
		STM-907HT		STM-907HT-CE-400V-G-1		Standard CE		Totally 4 Pages	
G		Version		Approved by		Voltage		400V	
Date		Date		Date		Frequency		50HZ	
20180724		20180724		20180724					
2		3		4		5		6	
7		8		9		10		11	

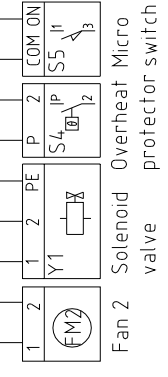
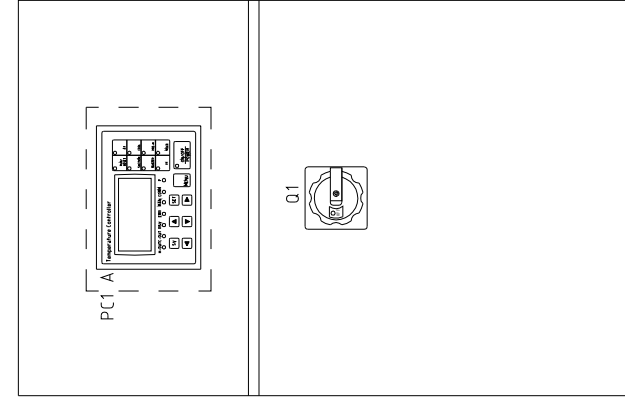
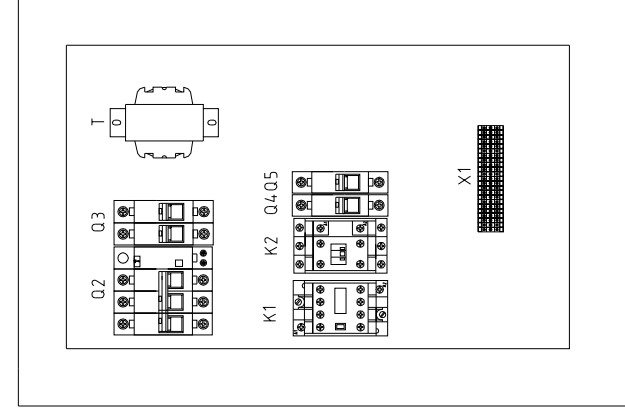
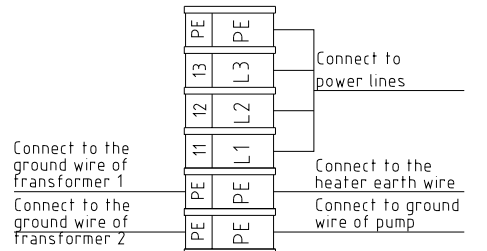




版本	Ver.F	Note: M1 is the overheat protection output contact of water pump.			
Mark	Before modification	Modified by	Modify date	20180724	
Scale	Standard	CE	Voltage		400V
			Frequency		50HZ
Page	2	Drawing NO			STM-907HT-CE-400V-G-2
	4	Title			STM-907HT Control Circuit Diagram
Totally	4	Version	G	SHINI	
	4	Approved by		信易电热机械股份有限公司 Shini Plastics Technologies, Inc.	
Pages	4	Designer			
	4	Proofread by			
Voltage	400V	Checked by			
	50HZ	Drawn			
Frequency	50HZ	Modified by			
		Checked by			
Scale	Standard	Approved by			
		Checked by			
Page	2	Version	G		
	4	Approved by			
Totally	4	Designer			
	4	Proofread by			
Voltage	400V	Checked by			
	50HZ	Drawn			
Frequency	50HZ	Modified by			
		Checked by			

1 2 3 4 5 6 7 8

A B C



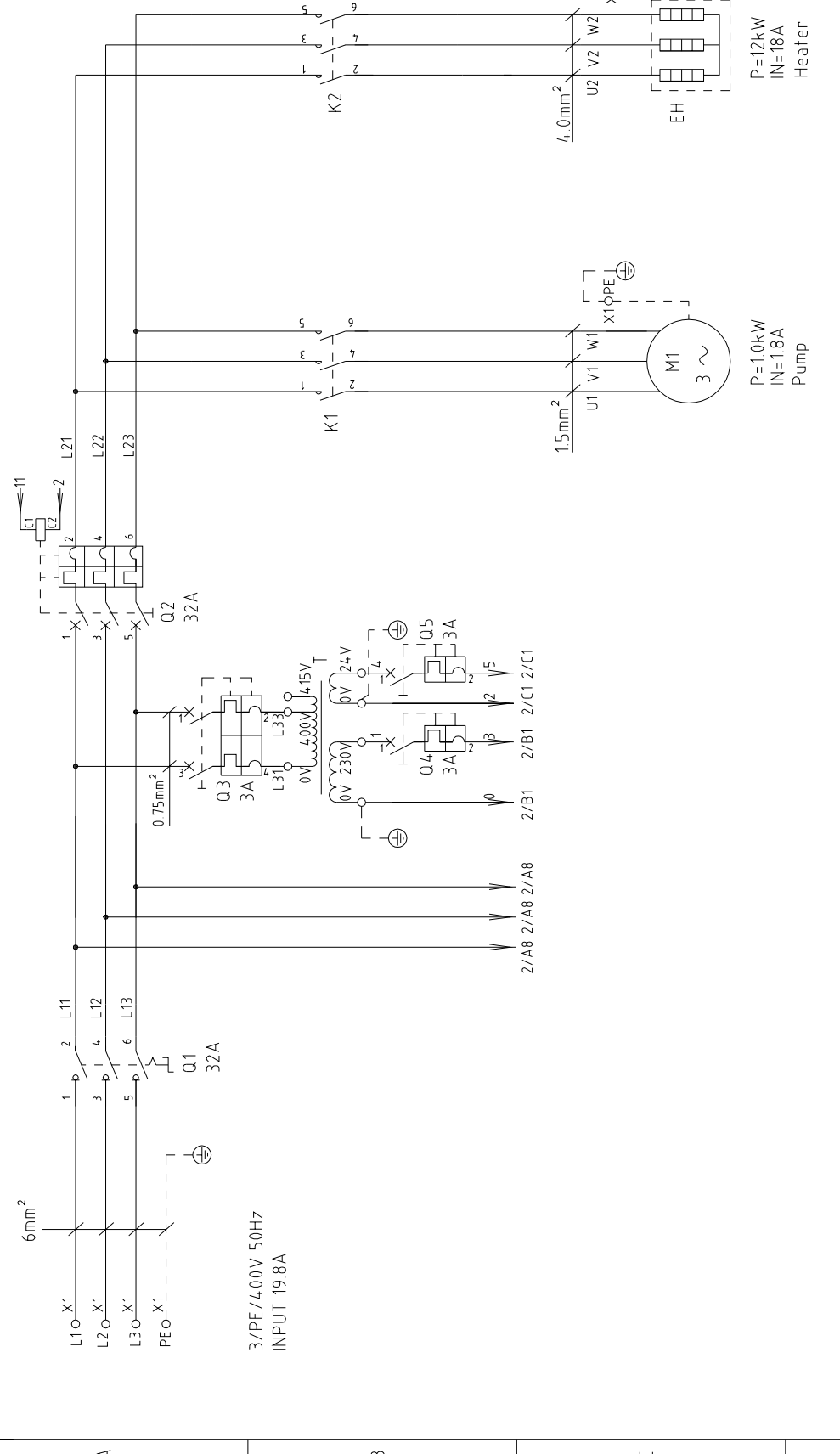
版本 Ver.F Technical requirements:(1)Pump and pipe heater should be directly connected to the output terminals of contactor and thermal overload relay.

Mark	Before modification	Modified by	20180724	Checked by	20180724	Date	20180724	Approved by	20180724	Version	G	Title	STM-907HT Electrical Components Layout	Drawing NO	STM-907HT-CE-4-00V-G-3	Scale	Standard	Page	3	Totally	4	Pages	400V 50HZ
Version	Ver.F	Modified by		Checked by		Date		Approved by		Version		Title	STM-907HT Electrical Components Layout	Drawing NO	STM-907HT-CE-4-00V-G-3	Scale	Standard	Page	3	Totally	4	Pages	400V 50HZ



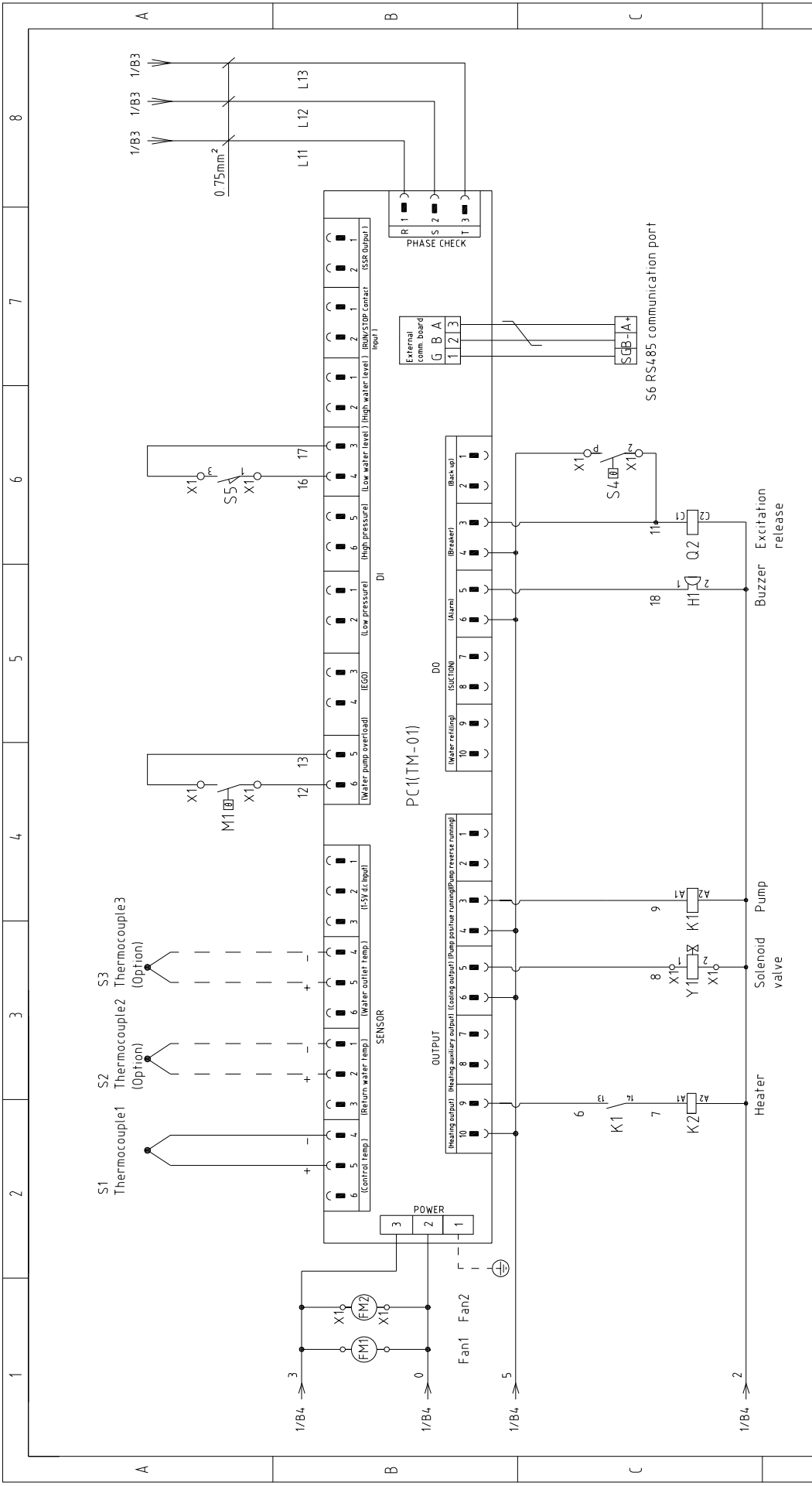
1 2 3 4 5 6 7 8

1		2		3		4		5		6		7		8	
NO.	Symbol	Name	Manufacturer	Type	Specification	Number	Material number	Remark							
1	Q1	Main power switch	EATON	P1-25/EA/SVB	25A	1	YE10125250000								
2	Q2	Circuit breakers	TECO	BM-63S	25A	1	YE40302503000								
3		Excitation release	CHINT	MX	24VAC	1	YE40024000000								
4	Q3	Circuit breakers	TECO	BM-63C/2003S 2P	3A	1	YE40200203000								
5	Q4 Q5	Circuit breakers	TECO	BM-63C/1003S 1P	3A	2	YE40100203000								
6	K1	Contactors	SIEMENS	3RT6015-1AB01	24VAC	1	YE00601502500								
7	K2	Contactors	SIEMENS	3RT6025-1AC20	24VAC	1	YE00602502600								
8	T	Transformer	JIUXIN	IN=400V/415V OUT=24V/230V	80VA/350mA	1	YE7004.0007200								
9	S1	Thermocouple	SHINI	----	K	1	----	(1)							
10	S2 S3	Thermocouple	SHINI	----	K	2	----	(1)(2)							
11	S4	Overheat protector	----	----	----	1	----	(1)							
12	S5	Limit switch	RENEW	----	250V 5(4)	1	----	(1)							
13	S6	Communication interface board RS-485 (double Dsub-9pin connector)	YUYUN	----	PCS	1	YE90048501200								
14		Shell RS485(SAL-700G-A-19)0	BINCHEG	----	PCS	1	YR40048500000								
15	PC1 A	Circuit board	YUYUN	TM-01 (含通讯)	180-430V 50/60Hz	1	YE81012200300								
16	X1	Terminal board	HONEYWELL	SK2 5	----	10	YE60002503200								
17		Terminal board	HONEYWELL	SK2 5PE	----	4	YE60002503400								
18		Terminal board	HONEYWELL	SK4	----	3	YE60000403200								
19		Terminal board	HONEYWELL	GK5PE	----	1	YE60000403500								
20	M1	Motor	SHINI	MP-55	400V 50Hz 0.55kW	1	----	(1)							
21	EH	Heater	SHINI	----	400V 50Hz 9kW	1	----	(1)							
22	FM1 FM2	Fan	----	----	230V 50/60Hz	2	----	(1)							
23	H1	Buzzer	JINGKANG	PK-35A	24VAC	1	YE84003500600								
24	Y1	Solenoid valve	----	----	24VAC	1	----	(1)							
25		Terminal fittings E/GKseries(honeywell)	HONEYWELL	----	PCS	6	YE60000003900								
版本		Notes: (1)Means it's not the material inside the control box.(2)Means equipped with function of displaying water outlet and return water temperature.													
Ver.F		Title		Drawing NO		Scale		Page		Page		Page		Page	
		STM-907HT		STM-907HT-CE-4.00V-G-4		Standard		CE		Voltage		400V		400V	
		Electrical Components List								Frequency		50HZ		50HZ	
		SHINI		信易电热机械股份有限公司		SHINI		Shini Plastics Technologies, Inc.							
Mark		Before modification		Modified by		Modify date		Checked by		Date		20180724			
1		2		3		4		5		6		7		8	



Mark	Before modification	Modified by	Modify date	Checked by	Date	20180724
Proofread by						
Designer						
Drawer						
Version	H	Approved by				
Title	STM-1215HT		Main Circuit Diagram		Drawing NO	
Ver.G			STM-1215HT-CE-400V-H-1			
			Standard		CE	
			Voltage		400V	
			Frequency		50HZ	
			Page		1	
			Totally		5	
			Pages		5	





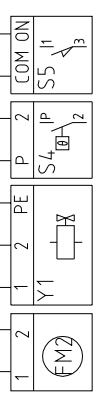
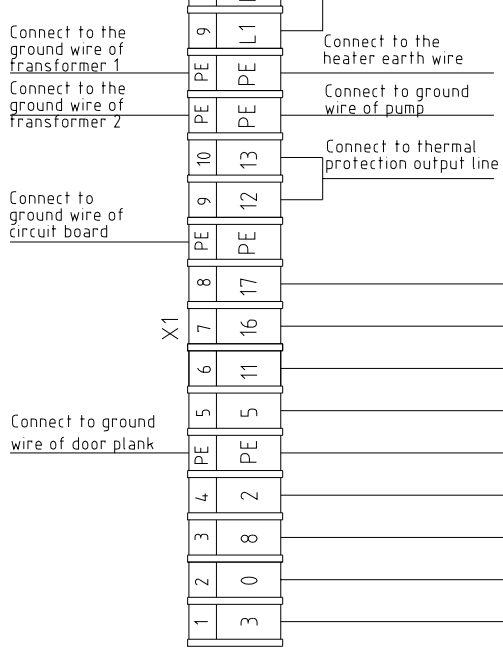
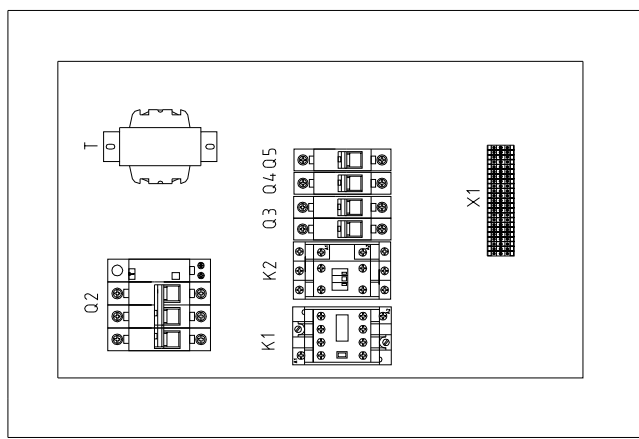
版本	Ver.G	Drawer	Designer	Proofread by	Checked by	Date	20180724	Title	STM-1215HT	Drawing NO	STM-1215HT-CE-400V-H-2	Scale	Page	2	
	Control Circuit Diagram								Standard		CE		Totally	5	Pages
Mark	Before modification	Modified by	Modify date										Voltage	400V	
													Frequency	50HZ	
1	2	3	4	5	6	7	8								



Note: M1 is the overheat protection output contact of water pump.

1 2 3 4 5 6 7 8

A B C



Fan 2 Solenoid valve
Overheat Micro protector switch

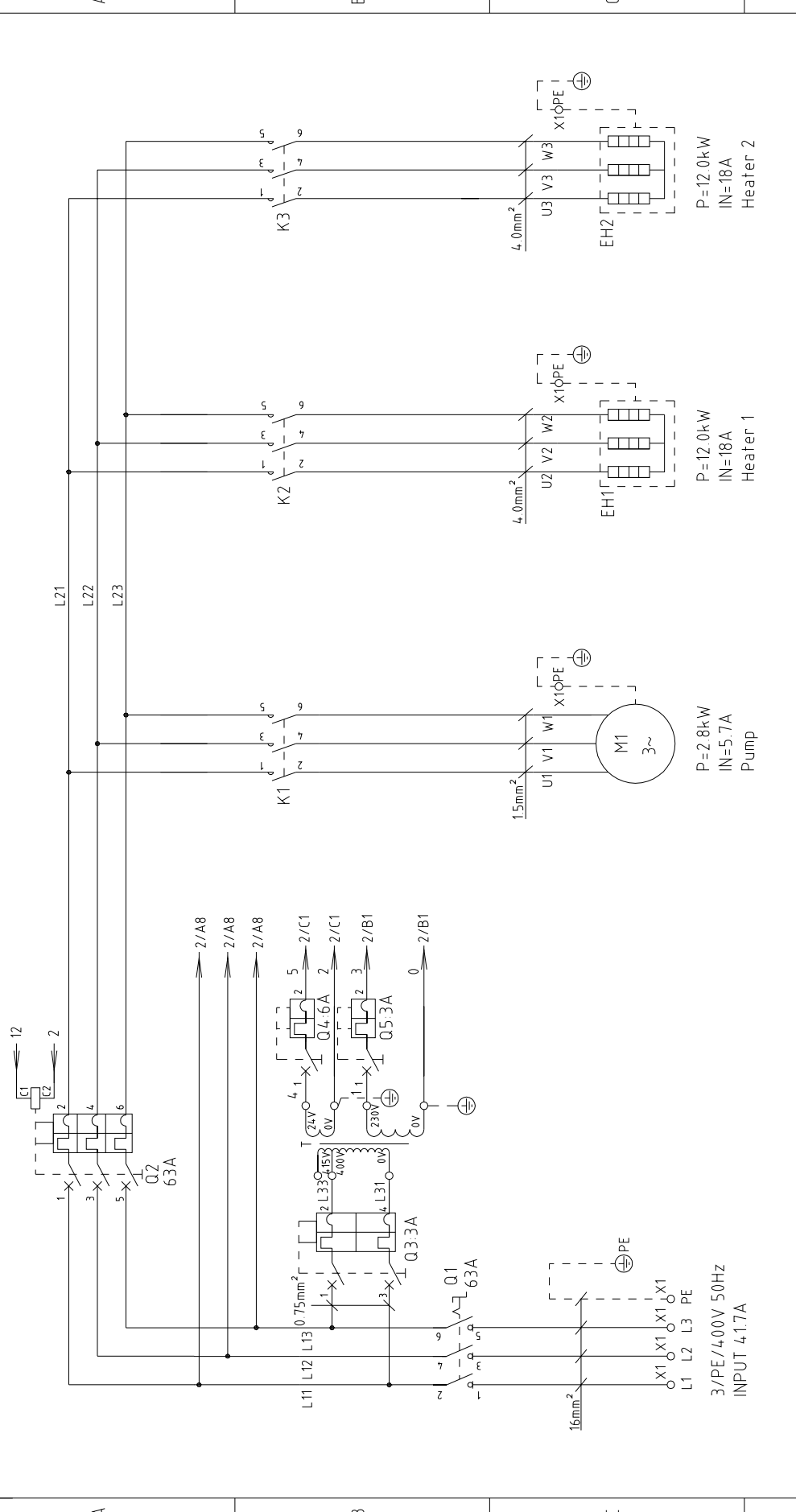
版本 Ver.G Technical requirements: (1) Pump and pipe heater should be directly connected to the output terminals of contactor and thermal overload relay.

D	Ver.G	STM-1215HT	H	Version	Scale	Page
		Electrical Components Layout		Approved by	Standard	Totally
					CE	5
					Voltage	400V
					Frequency	50HZ
Mark	Before modification	Modified by	Date			8
			20180724			
			4			
			3			
			2			
			1			

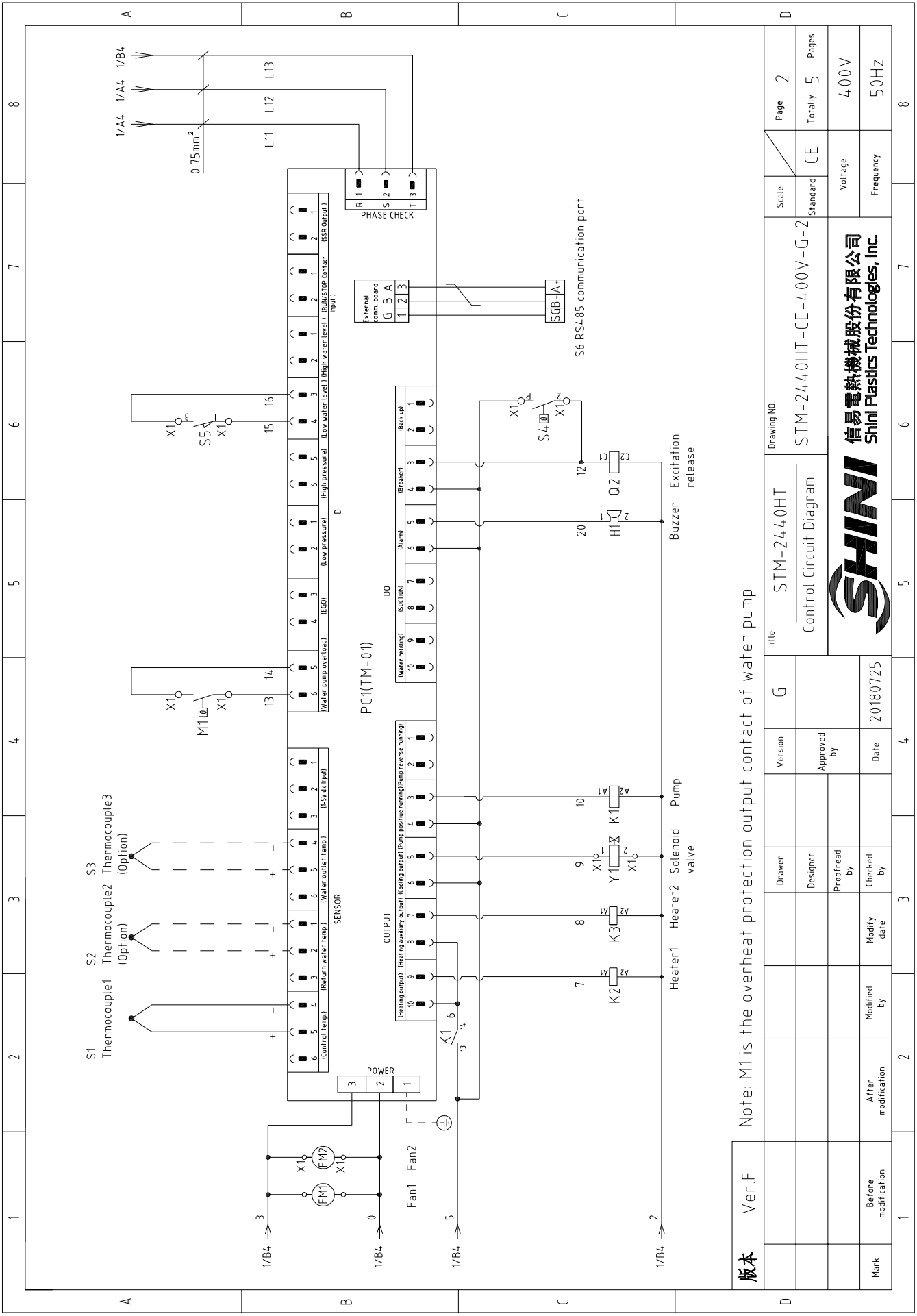



1		2		3		4		5		6		7		8	
NO.	Symbol	Name	Manufacturer	Type	Specification	Number	Material number	Remark							
1	Q1	Main power switch	EATON	P1-32/EA/SVB	32A	1	YE10323200000								
2	Q2	Circuit breakers	TECO	BM-63C/3032S	32A	1	YE40303203000								
3		Excitation release	CHINT	MX	24VAC	1	YE40024000000								
4	Q3	Circuit breakers	TECO	BM-63C/2003S 2P	3A	1	YE40200203000								
5	Q4 Q5	Circuit breakers	TECO	BM-63C/1003S 1P	3A	2	YE40100203000								
6	K1	Contactors	SIEMENS	3RT6015-1AB01	24VAC	1	YE00601502500								
7	K2	Contactors	SIEMENS	3RT6027-1AC20	24VAC	1	YE00602702600								
8	T	Transformer	JIUXIN	IN=400V/415V OUT=24V/230V	80VA/350mA	1	YE7004.0007200								
9	S1	Thermocouple	SHINI	----	K	1	----	(1)							
10	S2 S3	Thermocouple	SHINI	----	K	2	----	(1)(2)							
11	S4	Overheat protector	----	----	----	1	----	(1)							
12	S5	Limit switch	RENEW	----	250V 5(4)	1	----	(1)							
13	S6	Communication interface board RS-485 (double D-sub-9pin connector)	YUYUN	----	PCS	1	YE90048501200								
14		Shell RS485(SAL-700G-A-19)0	BINCHEG	----	PCS	1	YR40048500000								
15	PC1 A	Circuit board	YUYUN	TM-01 (含通讯)	180~430V 50/60Hz	1	YE81012200300								
16	X1	Terminal board	HONEYWELL	SK2 5	----	10	YE60002503200								
17		Terminal board	HONEYWELL	SK2 SPE	----	3	YE60002503400								
18		Terminal board	HONEYWELL	GK5PE	----	1	YE60000403500								
19		Terminal board	HONEYWELL	GK6	----	3	YE60000603200								
20		Terminal board	HONEYWELL	GK6PE	----	1	YE60000603500								
21	M1	Motor	SHINI	MP-100	4.00V 50Hz 1.0kW	1	----	(1)							
22	EH	Heater	SHINI	12kW	4.00V 50Hz	1	----	(1)							
23	FM1 FM2	Fan	----	----	230V 50/60Hz	2	----	(1)							
24	H1	Buzzer	JINGKANG	PK-35A	24VAC	1	YE84.003500600								
25	Y1	Solenoid valve	----	----	24VAC	1	----	(1)							
版本 Ver.G Notes: (1)Means it's not the material inside the control box (2)Means equipped with function of displaying water outlet and return water temperature.															
		Drawer		Version		H		Title		Drawing NO		Scale		Page	
		Designer		Approved by				STM-1215HT		STM-1215HT-CE-400V-H-4		Standard		CE	
		Proofread by		Date		20180724		Electrical Components list 1				Voltage		400V	
Mark		Before modification		Modified by		Modify date						Frequency		50HZ	
1		2		3		4		5		6		7		8	





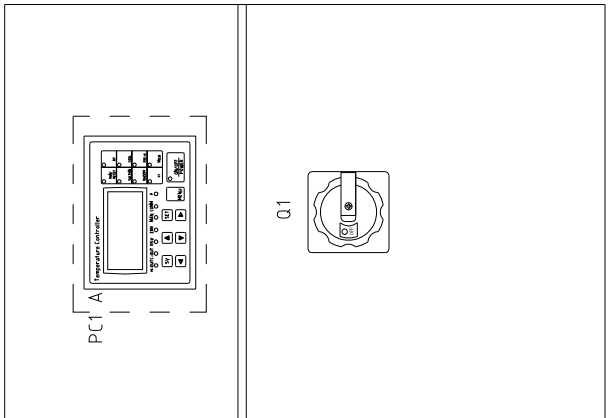
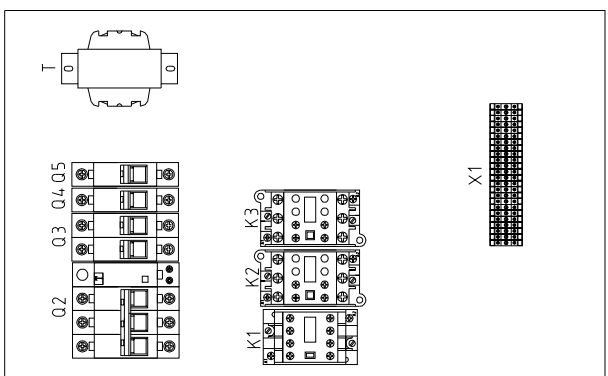
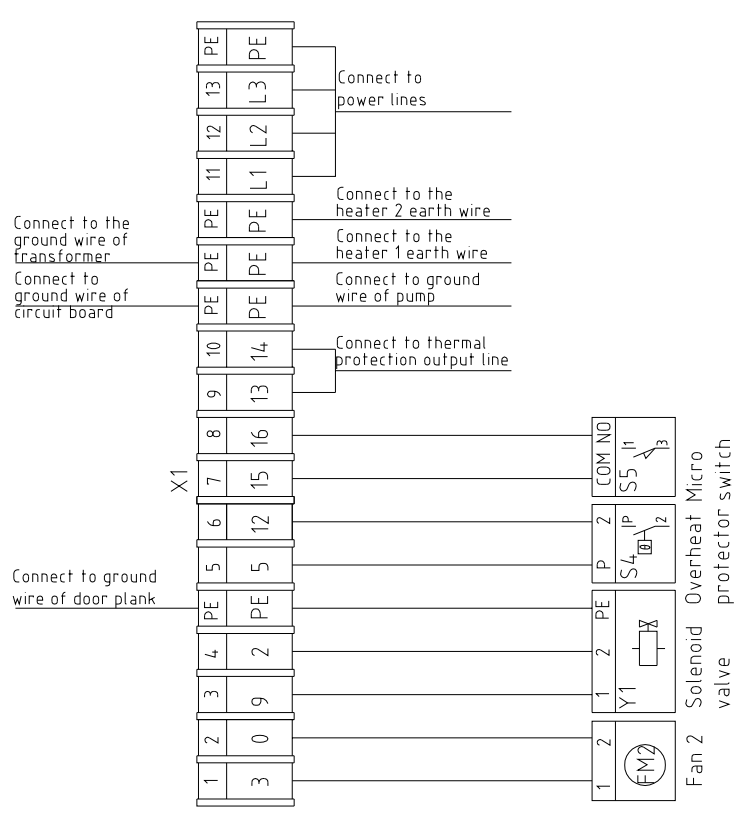
版本	Ver.F	Title	STM-2440HT		Drawing NO	STM-2440HT-CE-400V-G-1		Scale	Page 1	Standard	CE	Voltage	400V	Frequency	50HZ
	Mark		Before modification	After modification		Modified by	Modify date		Checked by		Proofread by		Designer		Drawer
<p style="text-align: center;">SHINI 信易电热机械股份有限公司 Shini Plastics Technologies, Inc.</p>															
<p style="text-align: center;">Main Circuit Diagram</p>															
<p style="text-align: center;">STM-2440HT-CE-400V-G-1</p>															
<p style="text-align: center;">Page 1</p>															
<p style="text-align: center;">Totally 5 Pages</p>															



版本	Ver.F	Version	G	Title	STM-2440HT			Drawing NO	STM-2440HT-CE-4.00V-G-2		
							Scale		Standard	CE	Page
Mark	Before modification	Modified by		Designer	Proofread by	Checked by	Date	20180725	Voltage	400V	
	After modification		Modify date							Frequency	50HZ
 <p>信易電熱機械股份有限公司 Shini Plastics Technologies, Inc.</p>											
<p>Note: M1 is the overheat protection output contact of water pump.</p>											
<p>Control Circuit Diagram</p>											
<p>Scale: Standard CE</p>											
<p>Page: 2</p>											
<p>Totally: 5 Pages</p>											
<p>Mark: Before modification, After modification, Modified by, Modify date, Checked by, Date, Designer, Proofread by, Version, Approved by, Title, Drawing NO, Standard, CE, Voltage, Frequency, Page</p>											

1 2 3 4 5 6 7 8

A B C



Technical requirements: (1) Pump and pipe heater should be directly connected to the output terminals of contactor and thermal overload relay.

版本	Ver.F	Title	STM-2440HT	Drawing NO	STM-2440HT-CE-4.00V-G-3	Scale	Standard	Page	3
	Electrical Components Layout		CE		Totally		5		
Mark	Before modification	Date	20180725	Approved by	Checked by	Modified by	Modify date	Voltage	400V
	After modification		2						3
		SHINI		信易電熱機械股份有限公司 Shini Plastics Technologies, Inc.				8	

1		2		3		4		5		6		7		8	
NO.	Symbol	Name	Manufacturer	Type	Specification	Number	Material number	Remark							
1	Q1	Main power switch	EATON	P3-63/EA/SVB	63A	1	YE10636300000								
2	Q2	Circuit breakers	TECO	BM-63C 63A	63A	1	YE40306303000								
3	Q3	Excitation release	TECO	MX	24VAC	1	YE40024000000								
4	Q4	Circuit breakers	TECO	BM-63C/2003S 2P	3A	1	YE40200203000								
5	Q4	Circuit breakers	TECO	BM-63C/1006S 1P	6A	1	YE40100600100								
6	Q5	Circuit breakers	TECO	BM-63C/1003S 1P	3A	1	YE40100203000								
7	K1	Contactors	SIEMENS	3RT6016-1AB01	24VAC	1	YE00601602500								
8	K2 K3	Contactors	SIEMENS	3RT6027-1AC20	24VAC	2	YE00602702600								
9	T	Transformer	JIUXIN	IN=400/415V OUT=24V/230V	120VA/350mA	1	YE70040007300								
10	S1	Thermocouple	SHINI	----	----	1	----	(1)							
11	S2 S3	Thermocouple	SHINI	----	----	2	----	(1)(2)							
12	S4	Overheat protector	----	----	----	1	----	(1)							
13	S5	Limit switch	RENEW	SM1709-A/SZ-15GHW24-BA	250V 5(4)	1	----	(1)							
14	S6	Communication interface board RS-485 (double Dsub-9pin connector)	YUYUN	----	PCS	1	YE90048501200								
15		Shell RS485(SAL-700G-A-19)0	BINGCHENG	----	PCS	1	YR40048500000								
16	PC1A	Circuit board	YUYUN	TM-01 (含通讯)	180~4.30V 50/60Hz	1	YE81012200300								
17	X1	Terminal board	HONEYWELL	SK2.5	----	10	YE60002503200								
18		Terminal board	HONEYWELL	GK2.5PE	----	2	YE60002503400								
19		Terminal board	HONEYWELL	GK5PE	----	2	YE60000403500								
20		Terminal board	HONEYWELL	GK16	----	3	YE60001603200								
21		Terminal board	HONEYWELL	GK16PE	----	1	YE60001603500								
22	M1	Motor	SHINI	TP-280	4.00V 50Hz 2.8kW	1	----	(1)							
23	EH1 EH2	Heater	SHINI	12kW	4.00V 50Hz	2	----	(1)							
24	FM1 FM2	Fan	----	----	230V 50/60Hz	2	----	(1)							
25	H1	Buzzer	JINGKANG	PK-35A	24VAC	1	YE84003500600								
版本		Notes: (1)Means it's not the material inside the control box (2)Means equipped with function of displaying water outlet and return water temperature.													
Ver.F		Drawer		Version		G		Title		Drawing NO		Scale		Page	
		Designer		Approved by				STM-244.0HT		STM-244.0HT-CE-4.00V-G-4		Standard		CE	
		Proofread by		Date		20180725		Electrical Components list 1				Voltage		400V	
Mark		Before modification		Modified by		Modify date						Frequency		50HZ	
1		2		3		4		5		6		7		8	



1	2	3	4	5	6	7	8	
NO.	Symbol	Name	Manufacturer	Type	Specification	Number	Material number	Remark
26		Terminal fittings E/GKseries(honeywell)	HONEYWELL	----	PCS	6	YE60000003900	
A								
B								
C								
D								
Ver.F		Notes: (1)Means it's not the material inside the control box (2)Means equipped with function of displaying water outlet and return water temperature.			Title		Scale	
					STM-244.0HT		Standard	
					Electrical Components List 2		CE	
					Drawing NO		Page	
					STM-244.0HT - CE - 4.00V - G - 5		Totally 5	
							Voltage	
							Frequency	
Mark		Before modification	Modified by	Modify date	Checked by	Date	400V	
1		2	3	4	5	6	7	8

