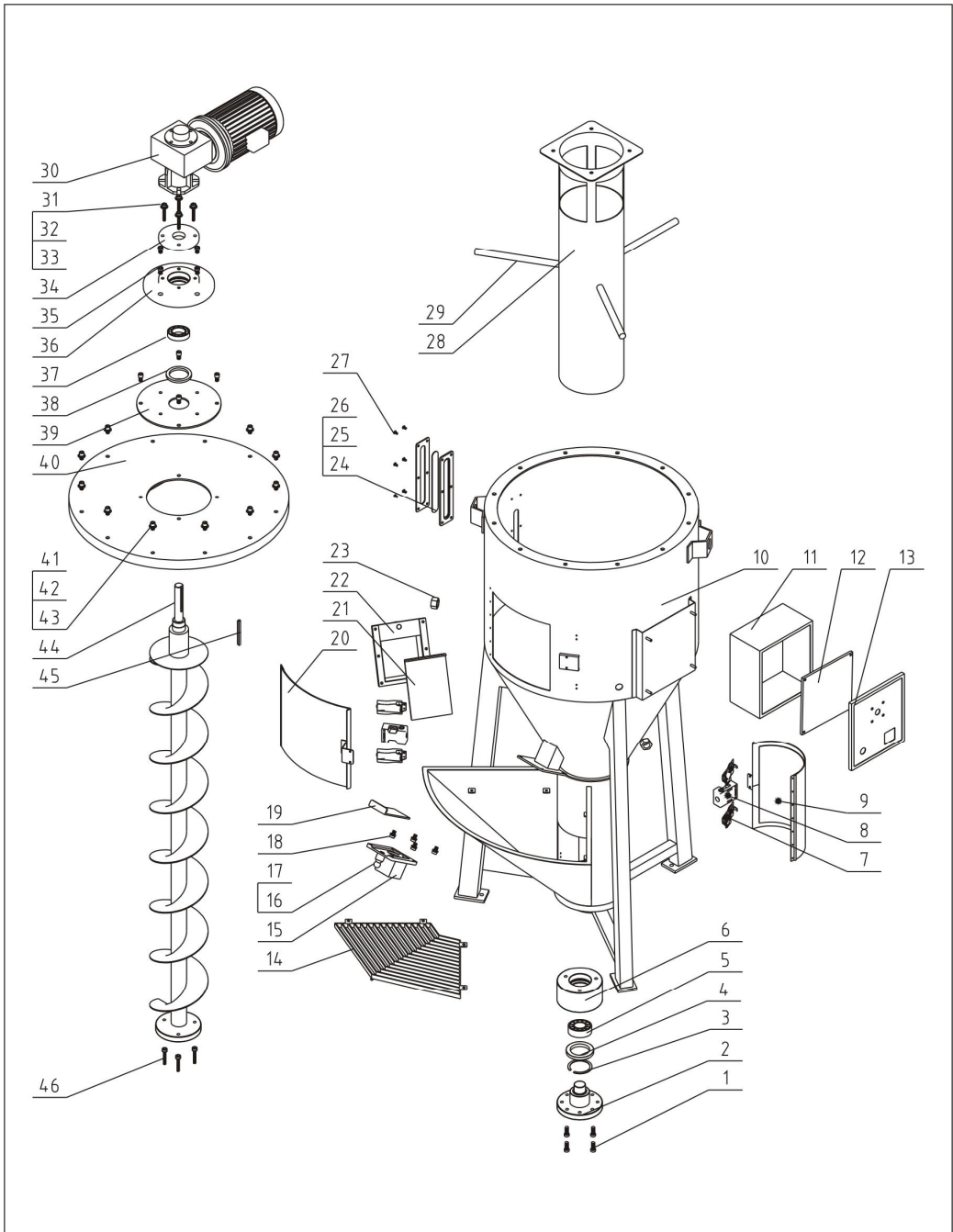


# 1. Assembly Drawing (SVM-160U/300U)



Remarks: Please refer to material list 2 for specific explanation of the Arabic numbers in parts drawing.

## 2. Parts List (SVM-160U/300U)

SVM-160U					
No.	Name	Part No.	No.	Name	Part No.
1	Socket head cap screw M8×20	YW61082000200	24	Six holes material sight glass fastener	YR40000600000
2	Fixed shaft	BH11016001810	25	Six hole acryl	YR40001200000
3	Self-aligning roller bearing 22207C(NSK)	YW11222070800	26	Six hole material sight glass sheet iron	YW09000600000
4	Circlip for hole ø85	YW69858900000	27	Cross recess pan head screw M6×15	YW61061500100
5	Framework oil seal GPø60×ø85×H10	YR20608500000	28	Sleeve	-
6	Bearing seat	BH11016001910	29	Screw	BH11160200110
7	Snap hook	YW02003000400	30	Gear motor NMRV050-FA-7.5-TS80D4B14MVP TC-1.1KW	YM50507500700
8	Safety switch	YE16152600100	31	Socket head cap screw M8×45	YW61084500000
9	Lower clearance door assembly	-	32	Spring washer 8	YW65008000100
10	Tank body weld	-	33	Flat washer 8	YW66081600000
11	Electrical cabinet	-	34	Upper bearing cover	BH11160200010
12	Electrical installation plate	-	35	Socket head cap screw M8×20	YW61082000200
13	Electrical cabinet cover	-	36	Upper bearing seat	BH11160300110
14	Wire frame	-	37	Deep groove ball bearing 6008	YW11600800000
15	Small discharging port weld	-	38	Felt collar 60	YR20805800000
16	Sphere handle	YW30003600100	39	Adapter flange	-
17	Spring latch	BH10233000310	40	Hopper lid assembly	-
18	Socket head cap screw M6×16	YW61061600200	41	Spring washer 10	YW65008000100
19	Small shut-off plate	BL34016002520	42	Flat washer 10	YW66081600000
20	Upper clearance door assembly	-	43	Socket head cap screw M10×15	YW61101500000
21	Big shut-off plate	BL34016002620	44	Mixer assembly	BL34016000620
22	Big discharging port weld	-	45	Motor shaft key	BH11160700010
23	Hexagon nut M20	YW64200200000	46	Socket head cap screw M8×25	YW61082501200

\* means possible broken parts. \*\* means easy broken part. and spare backup is suggested.

Please confirm the version of manual before placing the purchase order to guarantee that the item number of the spare part is in accordance with the real object.

SVM-300U					
No.	Name	Part No.	No.	Name	Part No.
1	Socket head cap screw M8×20	YW61082000200	24	Six holes material sight glass fastener	YR40000600000
2	Fixed shaft	BH11016001810	25	Six hole acryl	YR40001200000
3	Self-aligning roller bearing 22207C(NSK)	YW11222070800	26	Six hole material sight glass sheet iron	YW09000600000
4	Circlip for hole ø85	YW69858900000	27	Cross recess pan head screw M6×15	YW61061500100
5	Framework oil seal GPø60×ø85×H10	YR20608500000	28	Sleeve	-
6	Bearing seat	BH11016001910	29	Screw	BH11030000020
7	Snap hook	YW02003000400	30	Gear motor NMRV050-FA-7.5-TS80D4B14MVPTC-1.1KW	YM50507500700
8	Safety switch	YE16152600100	31	Socket head cap screw M8×45	YW61084500000
9	Lower clearance door assembly	-	32	Spring washer 8	YW65008000100
10	Tank body weld	-	33	Flat washer 8	YW66081600000
11	Electrical cabinet	-	34	Upper bearing cover	BH11160200010
12	Electrical installation plate	-	35	Socket head cap screw M8×20	YW61082000200
13	Electrical cabinet cover	-	36	Upper bearing seat	BH11160300110
14	Wire frame	-	37	Deep groove ball bearing 6008	YW11600800000
15	Small discharging port weld	-	38	Felt collar 60	YR20805800000
16	Sphere handle	YW30003600100	39	Adapter flange	
17	Spring latch	BH10233000310	40	Hopper lid assembly	
18	Socket head cap screw M6×16	YW61061600200	41	Spring washer 10	YW65008000100
19	Small shut-off plate	BL34016002520	42	Flat washer 10	YW66081600000
20	Upper clearance door assembly	-	43	Socket head cap screw M10×15	YW61101500000
21	Big shut-off plate	BL34016002620	44	Mixer assembly	BL34030002140
22	Big discharging port weld	-	45	Motor shaft key	BH11160700010
23	Hexagon nut M20	YW64200200000	46	Socket head cap screw M8×25	YW61082501200

\* means possible broken parts. \*\* means easy broken part. and spare backup is suggested.

Please confirm the version of manual before placing the purchase order to guarantee that the item number of the spare part is in accordance with the real object.