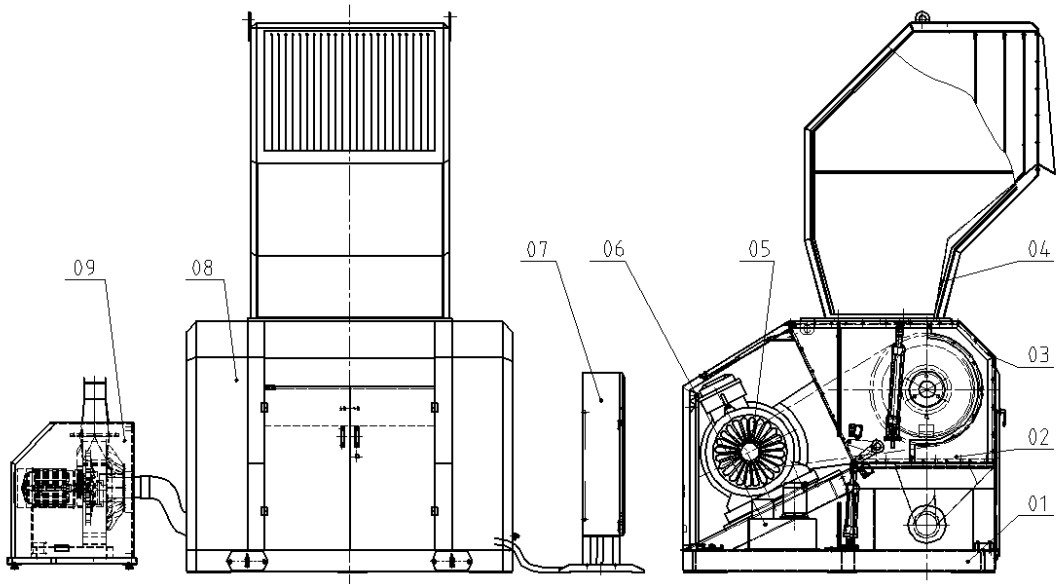


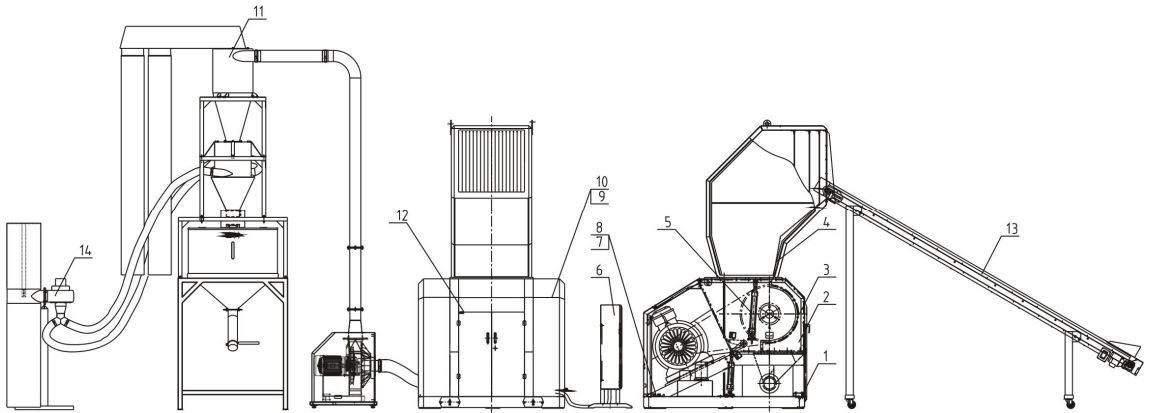
1. System Structure Drawing (SG-70(B))



Parts name:

- | | | |
|--|--|-----------------------------|
| 1. Rack assembly | 2. Screen bracket assembly | 3. Cutting chamber assembly |
| 4. Feeding box assembly | 5. Transmission gear | 6. Hydraulic device |
| 7. Control box assembly | 8. Sound-proof box assembly (optional in SG-70B) | |
| 9. Conveying device (optional in SG-70B) | | |

2. Assembly Drawing (SG-70)

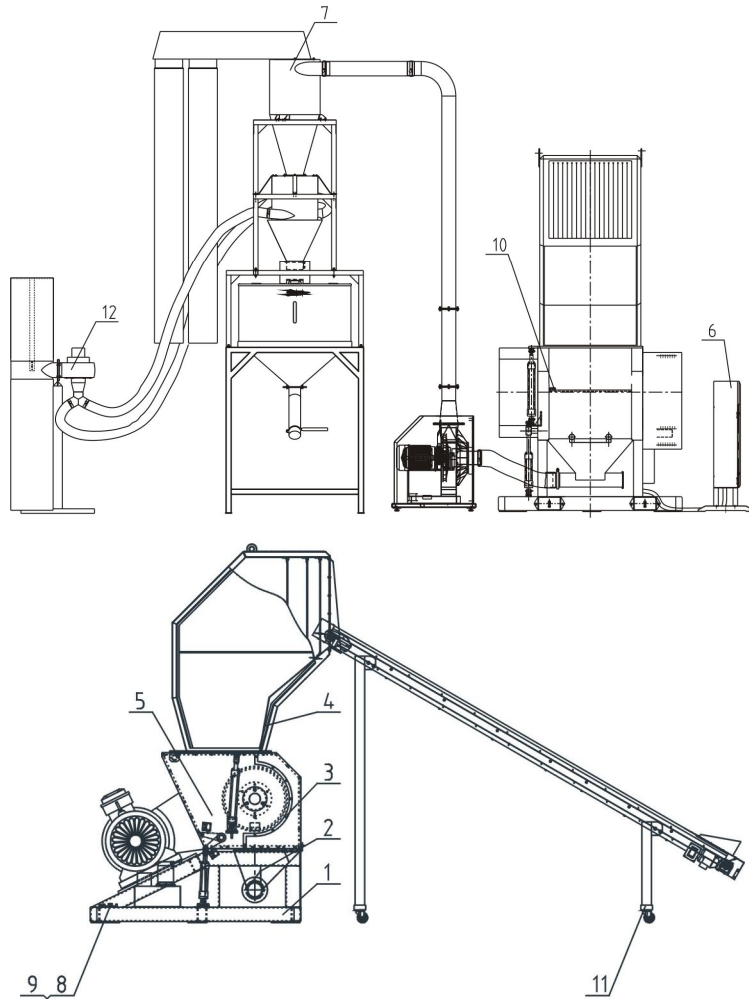


Note: Please refer to material list 3 about the parts code.

3. Part Lists of Assembly Drawing (SG-70)

No.	Name	Parts No.
1	Rack assembly	--
2	Screen bracket assembly	--
3	Cutting chamber assembly	--
4	Feeding box assembly	--
5	Lifting device	--
6	Control box	--
7	Presetting knife jig	--
8	Star knob B M8x35	YR4008350000
9	Sound-proof box assembly	--
10	Sound-proof cover-plate device	--
11	Feed separating assembly	--
12	Safety switch board	--
13	Belt conveyor	--
14	Dust Separating System	--

4. System Structure Drawing (SG-70B)



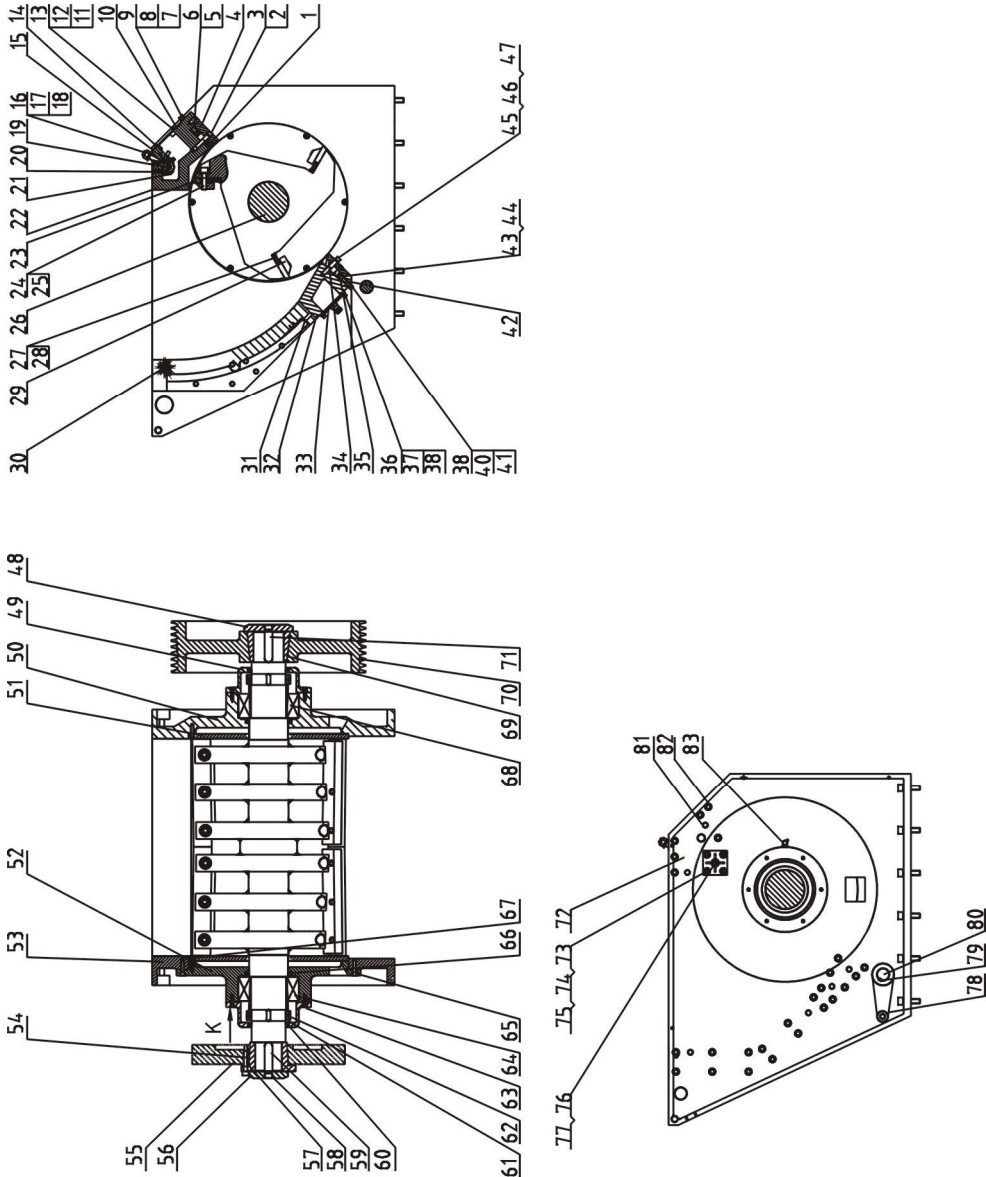
Note: Please refer to material list 5 about the parts code.

5. Part Lists of System Structure Drawing (SG-70B)

No.	Name	Parts No.
1	Rack assembly	--
2	Screen bracket assembly	--
3	Cutting chamber assembly	--
4	Feeding box assembly	--
5	Lifting device	--
6	Control box	--
7	Feed separating assembly	--
8	Presetting knife jig	--

9	Star knob B M8x35	YR40083500000
10	Safety switch board	-
11	Belt conveyor	-
12	Dust Separating System	-

6. Cutting Chamber Assembly



Note: Please refer to material list 7 about the parts code.

7. Parts List of Cutting Chamber Assembly

No.	Name	Parts No.	
		SG-7090(B)	SG-70120(B)
1	Fixed blade	YW40709000300	YW43070120000
2	Inner hexagon cylindrical screw GB/T70.1 M16x70-12.9(thread length 50)- Longzine	YW61167000000	YW61167000000
3	Spring washer 16	YW65016000000	YW65016000000
4	Fixed blade pressing blade I	BH11791100210	BH11701206910
5	Hexagon bolt GB/T5783 M10x40-10.9- Longzine	YW60104000000	YW60104000000
6	Hexagon nut GB/T6170 M10- Longzine	YW64001000100	YW64001000100
7	Inner hexagon cylindrical screw GB/T70.1 M10x100-12.9- Longzine	YW61101000000	YW61101000000
8	Flat gasket A Grade GB/T97.1 10 (11x20x2)- Longzine	YW66102000100	YW66102000100
9	Standard spring washer GB/T93 10- Longzine	YW65010000000	YW65010000000
10	Front block cover plate	--	--
11	Inner hexagon cylindrical screw GB/T70.1 M6x16-12.9 Longzine	YW61061601200	YW61061601200
12	Flat gasket A Grade GB/T97.1 10 (6.6x12x1.6)- Longzine	YW66061300000	YW66061300000
13	Standard spring washer GB/T93 6	YW65060000000	YW65060000000
14	Sensor bracket	--	--
15	Feeding box locking bolt	BH10070150040	BH10070150040
16	C Grade hexagon nut GB/T 41 M20x2.5- Longzine	YW64200200000	YW64200200000
17	Flat washer C Grade GB/T95 20	YW66203700000	YW66203700000
18	Standard spring washer GB/T93 20- Longzine	YW65205200000	YW65205200000
19	Locking bolt hinge pin	--	--
20	Inner hexagon cylindrical screw GB/T70.1 M8x50-12.9- Longzine	YW61085000000	YW61085000000
21	Locking bolt base	BH10701201110	BH10701201110
22	Front block	BW30791300010	BW30701280010
23	Rotating blade	YW42709000200 left YW42709000300 right	BH11701207210
24	Inner hexagon cylindrical screw GB/T70.1 M20x80-12.9- Longzine	YW61208000000	YW61208000000
25	Standard spring washer GB/T93 20	YW65020000000	YW65020000000
26	Blade rest shaft	BH10792100010 BH11709005810 (5 rotating blade)	BH11701207710 BH11701208510 (5 rotating blade)

27	Hexagon bolt GB/T5783 M10x50-8.8- Longzine	YW60105000000	YW60105000000
28	Hexagon bolt GB/T6170 M10- Longzine	YW64001000100	YW64001000100
29	Rotating blade pressing plate	--	BH10701214010
30	Rear upper block	BW30790300210 BH11709006010 (5 rotating blade)	BH10701430010 BH11701208010 (5 rotating blade)
31	Inner hexagon cylindrical screw GB/T70.1 M12x60-12.9- Longzine	YW61260000000	YW61260000000
32	Rear lower block	BW30790400010	BH10701410010
33	Water tank cover plate	BH10794200010	BH10701209410
34	Fixed blade	YW40709000300	YW43070120000
35	Fixed blade pressing plate II	BH11794400010	BH11701207110
36	Inner hexagon cylindrical screw GB/T70.1 M10x40-12.9- Longzine	YW61104000200	YW61104000200
37	Flat gasket A Grade GB/T97.1 10 (11x20x2)- Longzine	YW66102000100	YW66102000100
38	Standard spring washer GB/T93 10- Longzine	YW65010000000	YW65010000000
39	Inner hexagon cylindrical screw GB/T70.1 M10x95-12.9- Longzine	YW61109500000	YW61109500000
40	Flat gasket A Grade GB/T97.1 10 (11x20x2)- Longzine	YW66102000100	YW66102000100
41	Standard spring washer GB/T93 10- Longzine	YW65010000000	YW65010000000
42	Inner hexagon flat end locking screw GB/T77 M12x40-8.	YW61124000100	YW61124000100
43	Inner hexagon flat end locking screw GB/T5783 M10x40-10.9-Longzine	YW60104000000	YW60104000000
44	Hexagon bolt GB/T6170 M10-Longzine	YW64001000100	YW64001000100
45	Inner hexagon cylindrical screw GB/T70.1 M16x70-12.9 (length 50) Longzine	YW61167000000	YW61167000000
46	Flat gasket A Grade GB/T97.1 16- Longzine	YW66163000100	YW66163000100
47	Spring washer 16	YW65016000000	YW65016000000
48	Belt wheel taper sleeve baffle	BH10701202010	BH10701202010
49	Bearing cover	BH10701600010	BH10701600010
50	Right block	BH11701206110 BH11701208210 (5 rotating blade)	BH11701206110 BH11701208210 (5 rotating blade)
51	Left and right material feeder	BH10701202342	BH10701202342
52	Left bearing base	BH10701290010	BH10701290010

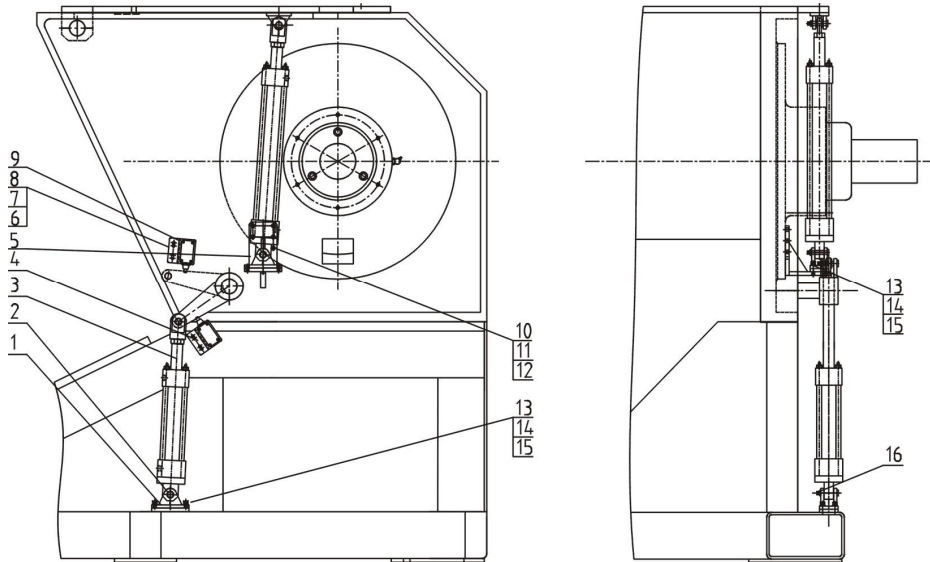
53	Left block	BH11701206010 BH11701208110 (5 rotating blade)	BH11701206010 BH11701208110 (5 rotating blade)
54	Flywheel taper sleeve	BW30509002910	BW30509002910
55	Flywheel	BW30509003010	BW30509003010
56	Flywheel taper sleeve	BH10701202610	BH10701202610
57	Inner hexagon cylindrical screw GB/T70.1 M16x70-12.9(length 50)- Longzine	YW61167000000	YW61167000000
58	Inner hexagon cylindrical screw GB/T70.1 M20x50-12.9- Longzine	YW61205000000	YW61205000000
59	Single round head common flat key	--	--
60	Inner framework rotary shaft lip seals	YR20140100000	YR20140100000
61	Small round nut GB/T810 M145x2-45 steel	YW64145200000	YW64145200000
62	Round nut lock washer GB/T858 140	YW65014500000	YW65014500000
63	Inner hexagon cylindrical screw GB/T70.1 M10x35-12.9- Longzine	YW61103500000	YW61103500000
64	NSK self-aligning roller bearing 24130CCK30/W33	YW11241300000	YW11241300000
65	Inner hexagon cylindrical screw GB/T70.1 M12x45-12.9- Longzine	YW61124500000	YW61124500000
66	Inner framework rotary shaft lip seals	YR20161901500	YR20161901500
67	Inner hexagonal sunk screw GB/T70.3 M12x30-10.9- Longzine	YW61123000100	YW61123000100
68	Dismantling sleeve AH24130 for rolling bearing	YW19241300000	YW19241300000
69	Belt pulley taper sleeve 5050 \varnothing 125	YW30505012500	YW30505012500
70	Belt pulley SPC800x8	YW30800800000	YW30800800000
71	Single round head common flat key C32x126	BH10704550010	BH10704550010
72	Feeding box limiting plate	BL55701203540	BL55701203540
73	Flat gasket A Grade GB/T97.1 12(13.5x24x2.5)- Longzine	YW66122400000	YW66122400000
74	Standard spring washer GB/T93 12- Longzine	YW65012000000	YW65012000000
75	Feeding box limiting plate fixed base	BH10701215410	BH10701215410
76	Large washer A Grade GB/T96 10(10.5x30x2.5)- Longzine	YW66103200000	YW66103200000
77	Standard spring washer GB/T93 10- Longzine	YW65010000000	YW65010000000
78	Screen bracket rotating arm	BH10701204010	BH10701204010
79	Single round head common flat key	BH10070122010	BH10070122010
80	Screen bracket shaft pin	BH11790500110	BH10701205010
81	Female column pin	--	--
82	Inner hexagon cylindrical screw GB/T70.1 M16x70-12.9 (length 50) - Longzine	YW61167000000	YW61167000000

83	Connector forced filling oil cup 45° M10x1	YW04010100000	YW04010100000
----	--	---------------	---------------

* means possible broken parts.** means easy broken part. and spare backup is suggested.

Please confirm the version of manual before placing the purchase order to guarantee that the item number of the spare part is in accordance with the real object.

8. Lifting Device Assembly



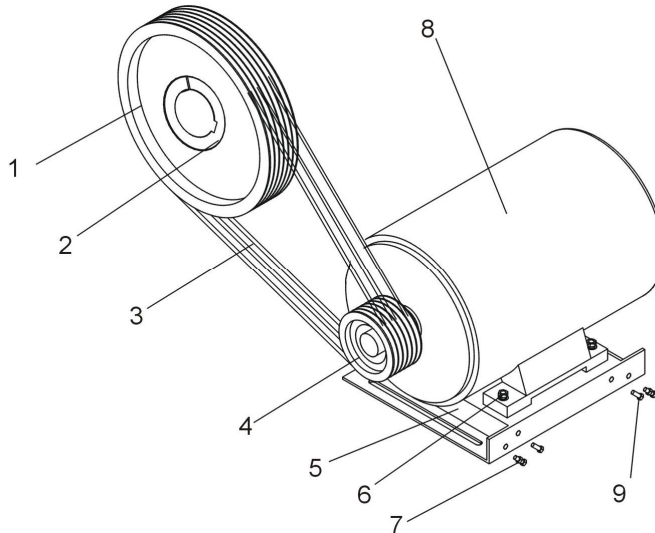
Note: Please refer to material list 9 about the parts code.

9. Parts List of Lifting Device

No.	Name	Parts No.
1	Oil cylinder lower base	--
2	Oil cylinder hinge pin	--
3	Hydraulic system	--
4	Lower limit switch fixed plate	--
5	Electronic handspike hinge pin	--
6	Inner hexagon cylindrical screw GB/T70.1 M6x16-12.9- Longzine	YW61061601200
7	Flat gasket A Grade GB/T97.1 6 (6.6x12x1.6)- Longzine	YW66061300000
8	Standard spring washer GB/T93 6	YW65060000000
9	Upper limit switch fixed plate	
10	Inner hexagon screw M10x35/12.9 Grade	YW60135900000
11	Flat gasket A Grade GB/T97.1 10 (11x20x2)- Longzine	YW66102000100
12	Standard spring washer GB/T93 10- Longzine	YW65010000000
13	Inner hexagon cylindrical screw GB/T70.1 M8x30-12.9-- Longzine	YW61083000000

14	Flat gasket A Grade GB/T97.1 8- Longzine	YW66081600000
15	Standard spring washer GB/T93 8- Longzine	YW65008000100
16	Flat gasket GB/T 96 8(8.4x24x2)-A2-70(SUS)	YW68240200000

10. Transmission Gear Assembly

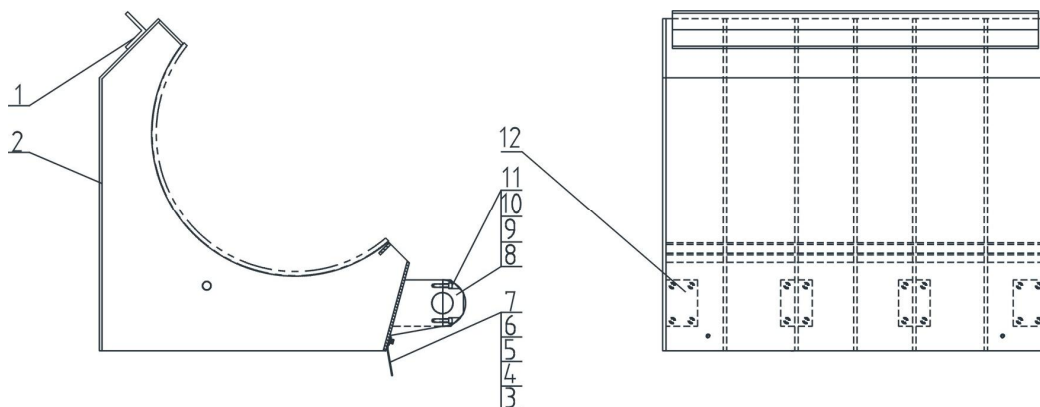


Note: Please refer to material list 11 about the parts code.

11. Parts List of Assembly

No.	Name	Parts No.	
		SG-7090(B)	SG-70120(B)
1	Belt pulley SPC800*8	YW30800800000	YW30800800000
2	Belt taper sleeve 5050 Ø125	YW30505012500	YW30505012500
3	Narrow V belt SPC L=4250	YR00425000000	YR00425000000
4	Belt pulley SPC224x8	YW30224800000	YW30224800000
5	Motor base	--	--
6	Hexagon nut GB/T5782 M20x100-8.8- Longzine	YW60201000000	YW60201000000
7	C Grade hexagon nut GB/T41 M20x2.5- Longzine	YW64200200000	YW64200200000
8	Motor 1LE0001-2DB03-4AA4(75KW)	YM10000107600	YM10000107700
9	Hexagon bolt GB/T5783 M20x160-12.9- Longzine (full thread)	YW61201600000	YW61201600000

12. Screen Bracket Assembly

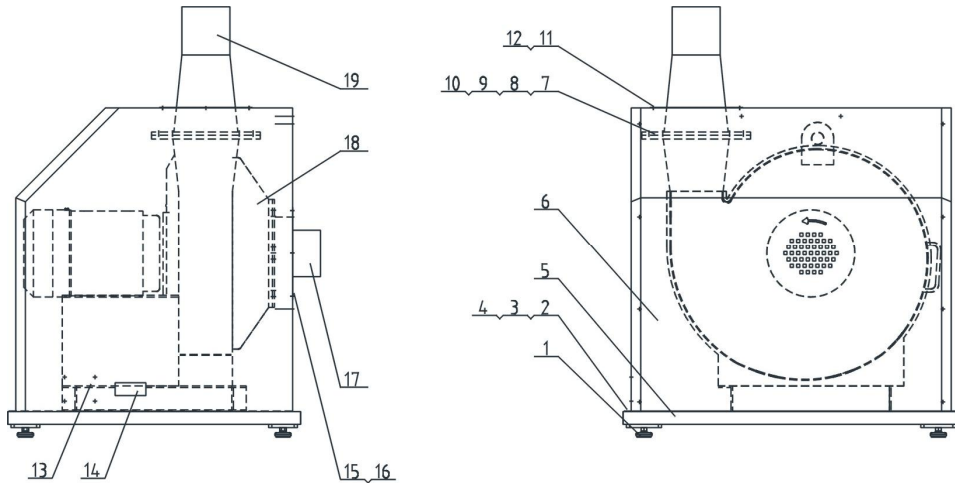


Note: Please refer to material list 13 about the parts code.

13. Parts List of Screen Bracket Assembly

No.	Name	Parts No.	
		SG-7090(B)	SG-70120(B)
1	Screen bracket locking support plate	--	--
2	Screen bracket main body		
3	Inner hexagon cylindrical screw GB/T70.1 M6x16-12.9- Longzine	YW61061601200	YW61061601200
4	Standard spring washer GB/T93 6	YW65060000000	YW65060000000
5	Flat gasket Grade A GB/T97.1 6- Longzine	YW66641216000	YW66641216000
6	Screen bracket rear buffer plate	--	--
7	Screen bracket rear press plate	--	--
8	Hinge pin hole-seat pressing plate of screen bracket	BH11701206610	BH11701206610
9	Inner hexagon cylindrical screw GB/T70.1 M8x30-12.9- Longzine	YW61083000000	YW61083000000
10	Standard spring washer GB/T93 8- Longzine	YW65008000100	YW65008000100
11	Flat gasket A Grade GB/T97.1 8- Longzine	YW66081600000	YW66081600000
12	Hinge pin hole seat of screen bracket	BH11701206710	BH11701206710

14. Conveyor Assembly

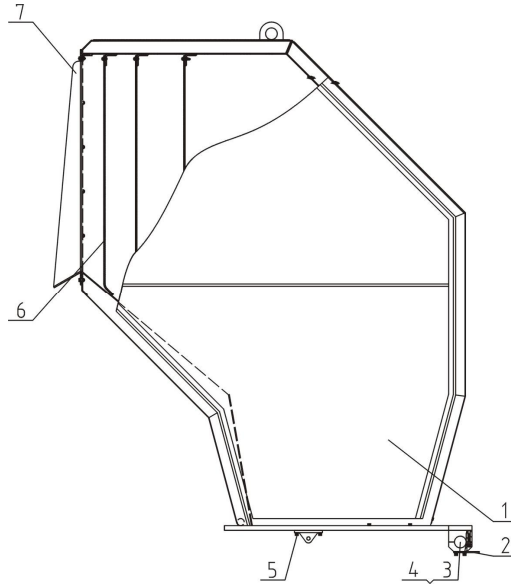


Note: Please refer to material list 15 about the parts code.

15. Parts List of Conveyor Assembly

No.	Name	Parts No.
1	Anti-vibration pad $\varnothing 50$	YW03005000000
2	Inner hexagon cylindrical screw GB/T70.1 M6x20-12.9-Longzine	YW61062000300
3	Standard spring washer GB/T93 6- Longzine	YW65006000100
4	Flat washer Grade A GB/T97.16 (6.6 x 12 x 1.6)- Longzine	YW66061300000
5	Base	--
6	Blower cover	--
7	Inner hexagon cylindrical screw GB/T70.1 M12 x45 -12.9- Longzine	YW61124500000
8	Standard spring washer GB/T93 12- Longzine	YW65012000000
9	Flat gasket A Grade GB/T97.1 12(13.5 x 24 x 2.5)- Longzine	YW66122400000
10	Hexagon nut GB/T6170 M12- Longzine	YW64012100000
11	Inner hexagon cylindrical screw GB/T70.1M5 x 10- Longzine	YW61051000000
12	Top cover plate	--
13	Clamp fixed plate	--
14	Embedded handle 3NL-5213	YR90521300000
15	Side cover plate	--
16	Side plate	--
17	Blower inlet pipe connector	--
18	High pressure Centrifugal blower (7.5KW)	BM30005500050
19	Blower outlet pipe connector	--

16. Feeding box Assembly

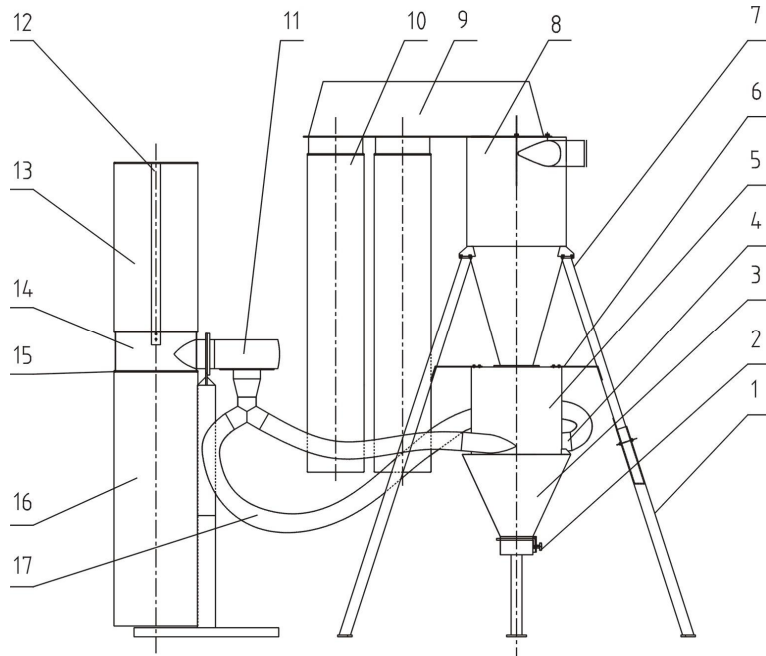


Note: Please refer to material list 17 about the parts code.

17. Parts List of Feeding Box Assembly

No.	Name	Parts No.	
		SG-7090(B)	SG-70120(B)
1	Feeding box main body	--	--
2	Switch spacing board	BH10702200040	BH10702200040
3	Feeding box rotation shaft base cover plate	BH10701900010	BH10701900010
4	Feeding box rotation shaft	BH10790700010	BH10701225010
5	Electrical handspike upper base	--	--
6	Plastic curtain	--	--
7	Feeding box	--	--

18. Cyclone and Dust Separator Assembly



Note: Please refer to material list 19 about the parts code.

19. Parts List of Cyclone and Dust Separator Assembly

No.	Name	Parts No.
1	Lower bracket	--
2	Start nut 5/16	YW09051600000
3	Lower hopper	--
4	Stainless steel pipe clamp 5"	YW02000500000
5	Large hopper	--
6	Tensioning strip	--
7	Upper bracket	--
8	Cyclone dust separator main body	--
9	Cyclone dust separator outlet	--
10	Cloth bag $\varnothing 314 \times 1800$	BP82313100044
11	Blower 1.1kw(for SG)	BM30112230050
12	Cloth bag bracket	--
13	Filter bag 2	--
14	Blower and cloth bag support (1.1kw)	--
15	Filter cloth bag pipe clamp	--

16	Filter bag 2	--
17	Steer wire plastic pipe 4" x3m	YR60000400100