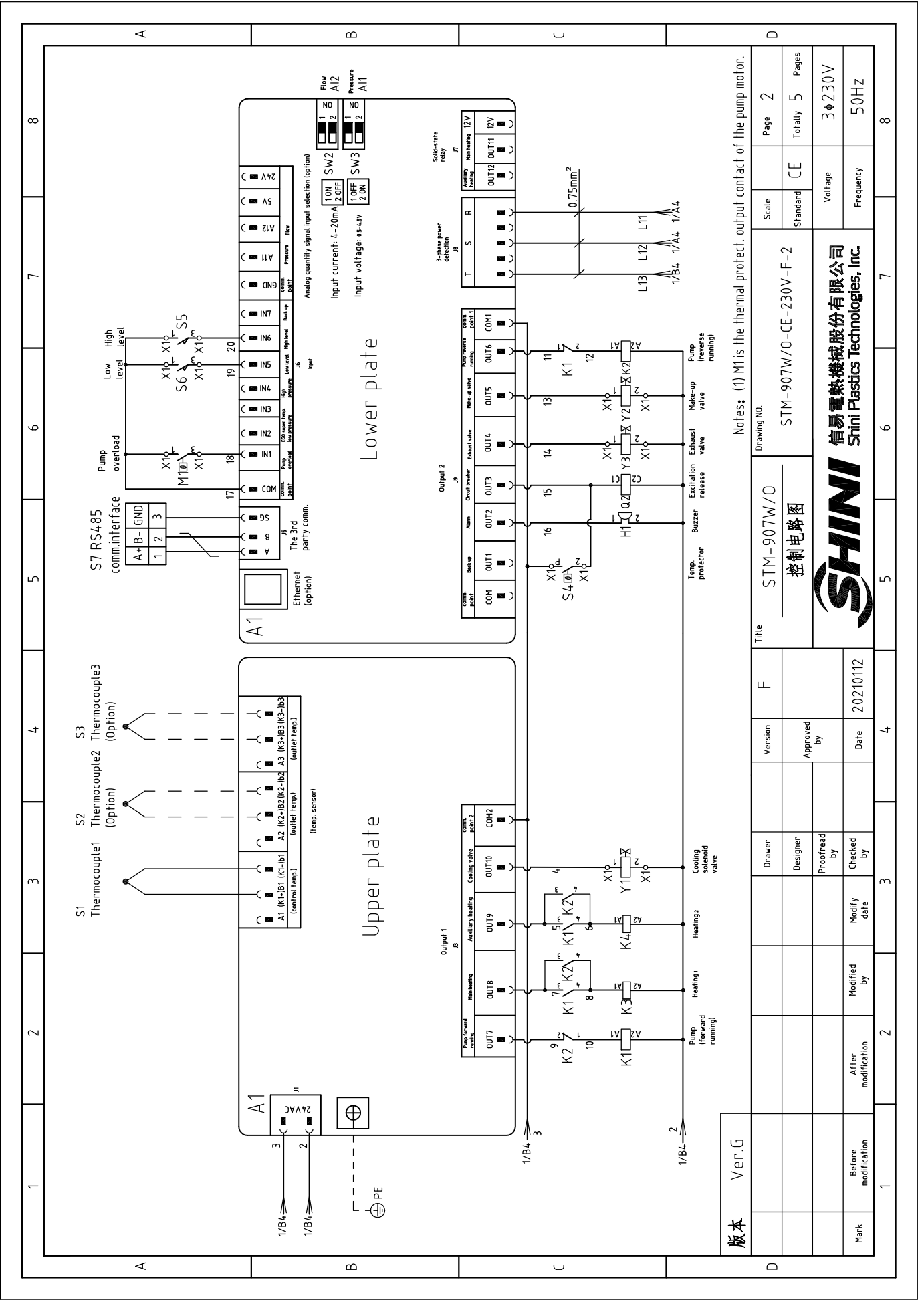


版本 Ver.G

Mark	Before modification	After modification	Date	20210112	Date	20210112	Checked by	Proofread by	Designer	Drawer	Version	F	Title	Drawing NO.		Scale	Page 1
	STM-907W/O													STM-907W/O-CE-230V-F-1			
主电路图														Voltage		3 ϕ 230V	
SHINI 信易电热机械股份有限公司 Shini Plastics Technologies, Inc.														Frequency		50Hz	



版本	Ver.G	1	2	3	4	5	6	7	8
Mark	Before modification		After modification	Modified by	Modify date	Checked by	Date	20210112	
Designer		Proofread by	Approved by	Version	F	Title	STM-907W/O		
Drawer							STM-907W/O-CE-230V-F-2		
Scale							Page 2		
Standard							CE		
Voltage	3φ230V						Totally 5 Pages		
Frequency	50HZ								

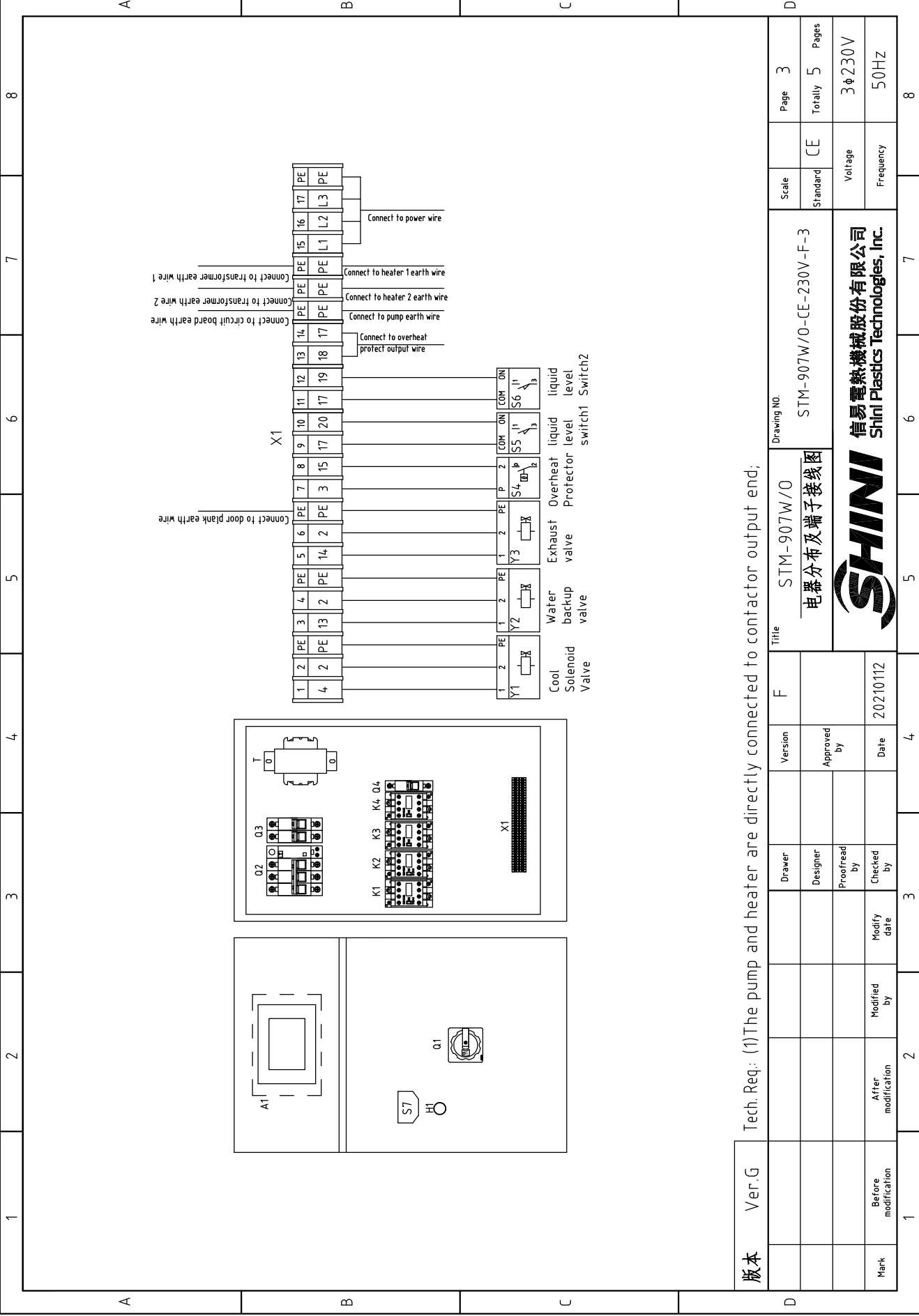
Notes: (1) M1 is the thermal protect. output contact of the pump motor.

Drawing NO.

控制电路图



信易电热机械股份有限公司
Shini Plastics Technologies, Inc.



版本 Ver.G

Tech. Req: (1)The pump and heater are directly connected to contactor output end;

Drawer	Version	F	Title	Scale	Page
Designer	Approved by		STM-907W/0	Standard	Totally 3
Proofread by	Date		电柜分布及端子接线图	CE	Pages 5
Checked by	Modify date	20210112	信易电热机械股份有限公司 Shini Plastics Technologies, Inc.	Voltage	3φ230V
After modification	Modified by			Frequency	50Hz

Drawing NO.			Page 3		
STM-907W/0-CE-230V-F-3			Totally 5 Pages		
电柜分布及端子接线图			Voltage 3φ230V		
20210112			Frequency 50Hz		



1		2		3		4		5		6		7		8	
NO.	Symbol	Name	Manufacturer	Type	Specification	Number	Material number	Remark							
1	Q1	Main switch	EATON	P1-32/EA/SVB	32A	1	YE10323200000								
2	Q2	Circuit breakers	TECO	BM-63C/3032S	32A	1	YE40303203000								
3		Excitation release	YIJIJIN	MX	24VAC	1	YE40024000000								
4	K1 K2	Contactors	SIEMENS	3RT6015-1AB01	24VAC	2	YE00601502500								
5		Auxiliary contact	SIEMENS	3RH6911-1HA22	2NO+2NC	2	YE00691100000								
6	K3	Contactors	SIEMENS	3RT6018-1AB01	24VAC	1	YE00601802500								
7	K4	Contactors	SIEMENS	3RT6016-1AB01	24VAC	1	YE00601602500								
8	Q3	Circuit breakers	TECO	BM-63C/2003S 2P	3A	1	YE40200203000								
9	Q4	Circuit breakers	TECO	BM-63C/1003S 1P	3A	1	YE40100203000								
10	T	Mutual transformer	JIUXIN	IN=230V/200V OUT=24V	80VA	1	YE70023005200								
11	S1	Thermocouple	SHINI	----	----	1	----	(1)							
12	S2 S3	Thermocouple	SHINI	----	----	2	----	(2)							
13	S4	Overheat protector	----	----	----	1	----	(1)							
14	S5 S6	Micro switch	----	----	----	2	----	(1)							
15	S7	Connect to comm. interface board RS-485IDsub-9pin connector	YUYUN	----	PCS	1	YE90048501200								
16		RS485(SAL-700G-A-19)ver.0	BINCHENG	----	PCS	1	YR40048500000								
17	A1	Circuit board	PUNP	TM-W0-24VAC	180~600V 50/60Hz	1	YE8124-1800100								
18	Y1 Y2 Y3	Solenoid valve	----	----	24VAC 50/60Hz	3	----	(1)							
19	X1	Terminal board	HONEYWELL	SK2.5	----	12	YE60002503200								
20		Earth terminal board	HONEYWELL	GK2.5PE	----	6	YE60002503400								
21		Terminal board	HONEYWELL	GK6	----	3	YE60000603200								
22		Earth terminal board	HONEYWELL	GK6PE	----	1	YE60000603500								
23	H1	Buzzer	JINGKANG	PK-35A	24VAC/DC	1	YE84003500600								
24	M1	Motor	SHINI	VP-55	230V 50Hz 0.55kW	1	----	(1)							
25	EH1	Heater	SHINI	----	230V 50Hz 6kW	1	----	(1)							
版本 Ver.G Notes: (1) Materials not in the control box; (2) Optional output and return water temp. display function;															
D				Version		F		Title		Drawing NO.		Scale		Page	
				Approved by				STM-907W/O		STM-907W/O-CE-230V-F-4		CE		4	
				Proofread by				电气元件明细表				Voltage		Totally	
				Checked by		Date		SHINI				Frequency		5	
Mark		Before modification		Modified by		Modify date		SHINI		20210112		3 ϕ 230V		50Hz	
1		2		3		4		5		6		7		8	



1		2		3		4		5		6		7		8	
N0.	Symbol	Name	Manufacturer	Type	Specification	Number	Material number	Remark							
26	EH2	Heater	SHINI	----	230V 50Hz 3kW	1	----	(1)							
27		Terminal fittings E/GK series (HONEYWELL)	HONEYWELL	----	PCS	6	YE60000003900								
A															
B															
C															
D															
版本		Ver.G		Notes: (1) Materials not in the control box; (2) Optional output and return water temp. display function;		Title		Drawing NO.		Scale		Page		5	
				F		STM-907W/0 电气元件明细表		STM-907W/0-CE-230V-F-5		Standard		CE		Totally 5	
				Approved by		SHINI		Voltage		3φ230V				Pages	
				Date		20210112		Frequency		50Hz					
Mark		Before modification		Modified by		Modify date		After modification		Checked by		Date		8	



信易电热机械股份有限公司
Shini Plastics Technologies, Inc.