

Crystallizing System

SICR-2500U-ML

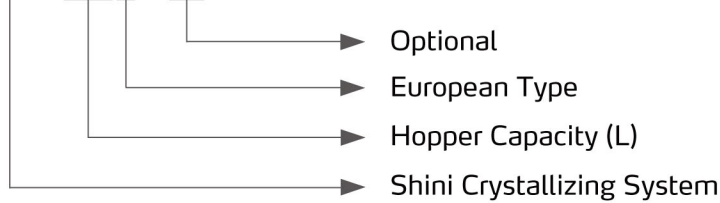


Refer carefully to this manual before operation.

SICR Series

■ Coding Principle

SICR-xxxU - xx

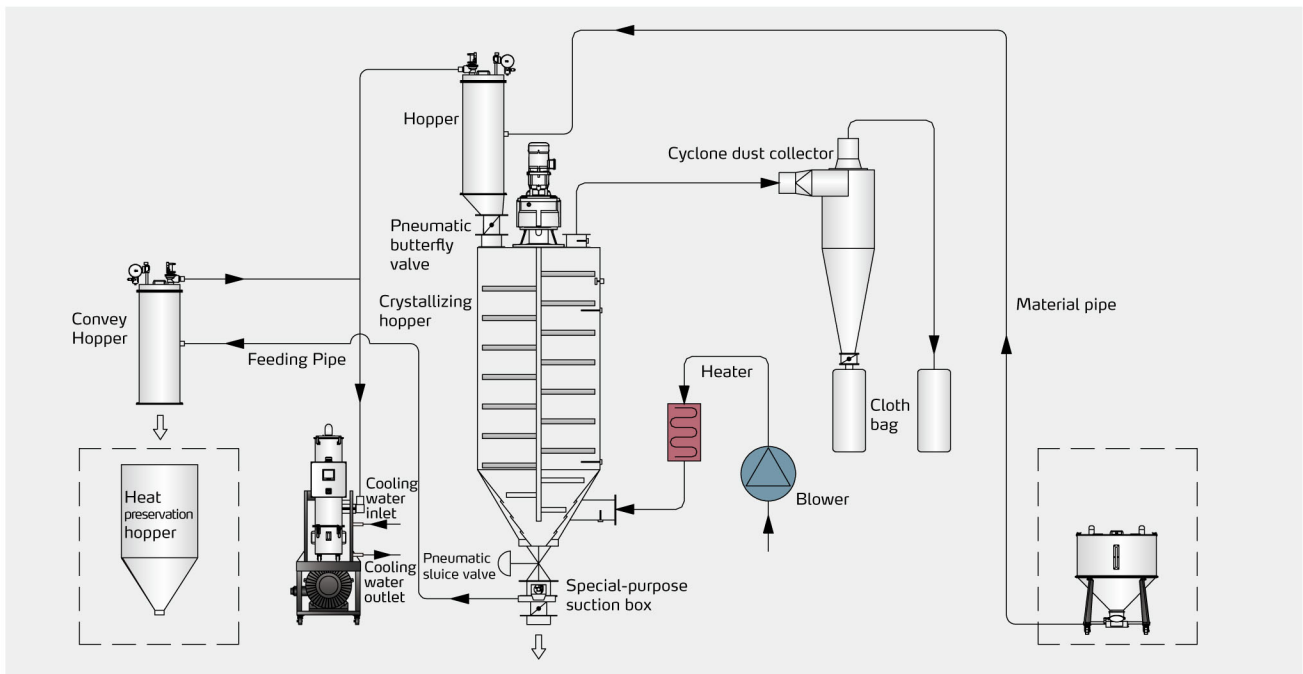


Inner Structure

■ Features

- Fix speed agitator controls materials through the crystallizing process to avoid the material from lumping together;
- Multi-step crystallizing temperature control ensures a simple and precise kick start of crystallization of non-crystalline material;
- The vacuum generator can work with the hopper and suction box to achieve auto loading and feeding;
- Siemens PLC controller with high reliability;
- 7" color screen for more intuitive control;
- SSR solid-state relay ensures precise temperature control;
- The cyclone dust collector can effectively collect the dust and reduce contamination of production space;
- With double overheat protection, it can reduce the possibility of either mechanical or manufactured problems;
- The material level switch can detect the material level accurately and make operation reliable;
- Safety switch ensures high machine safety during cleaning and maintenance.

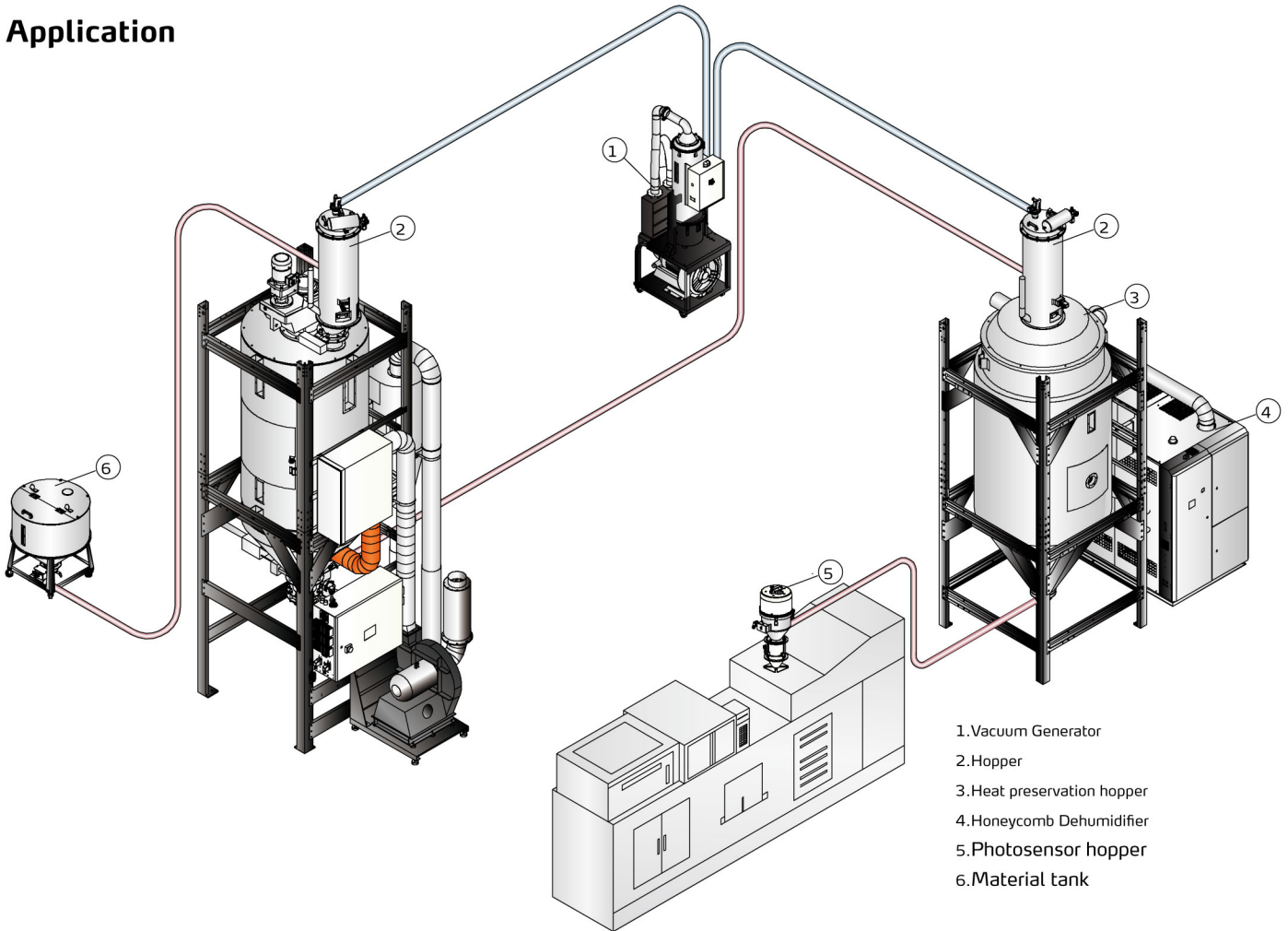
■ Working Principle



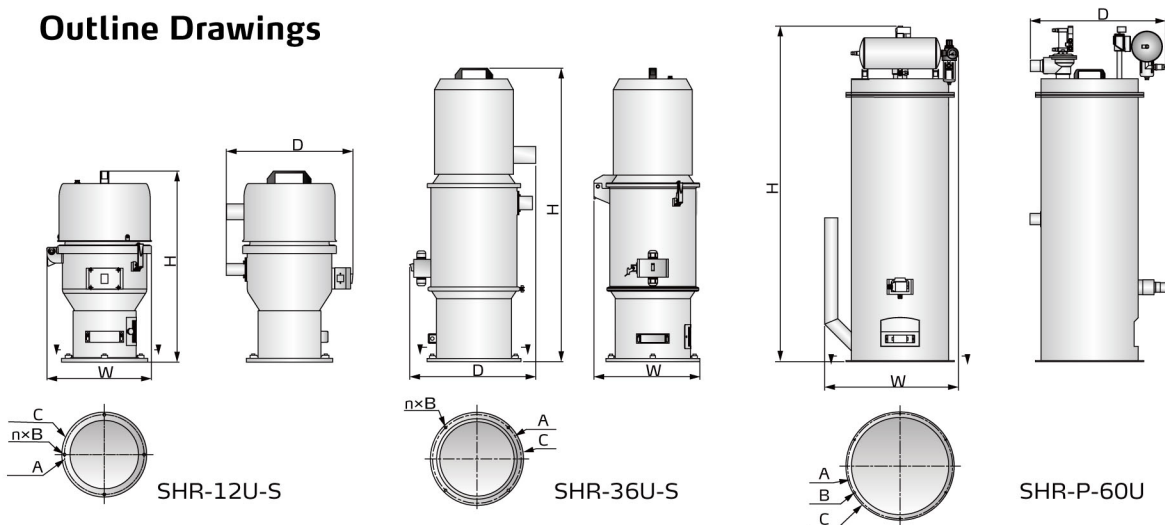
Options

- Safety ladder is optionally for SICR-900U and above models, and add "ML" at the end of the model code
- For models optional with stainless steel inlet and outlet pipes, add "SP" at the end of the model code

Application

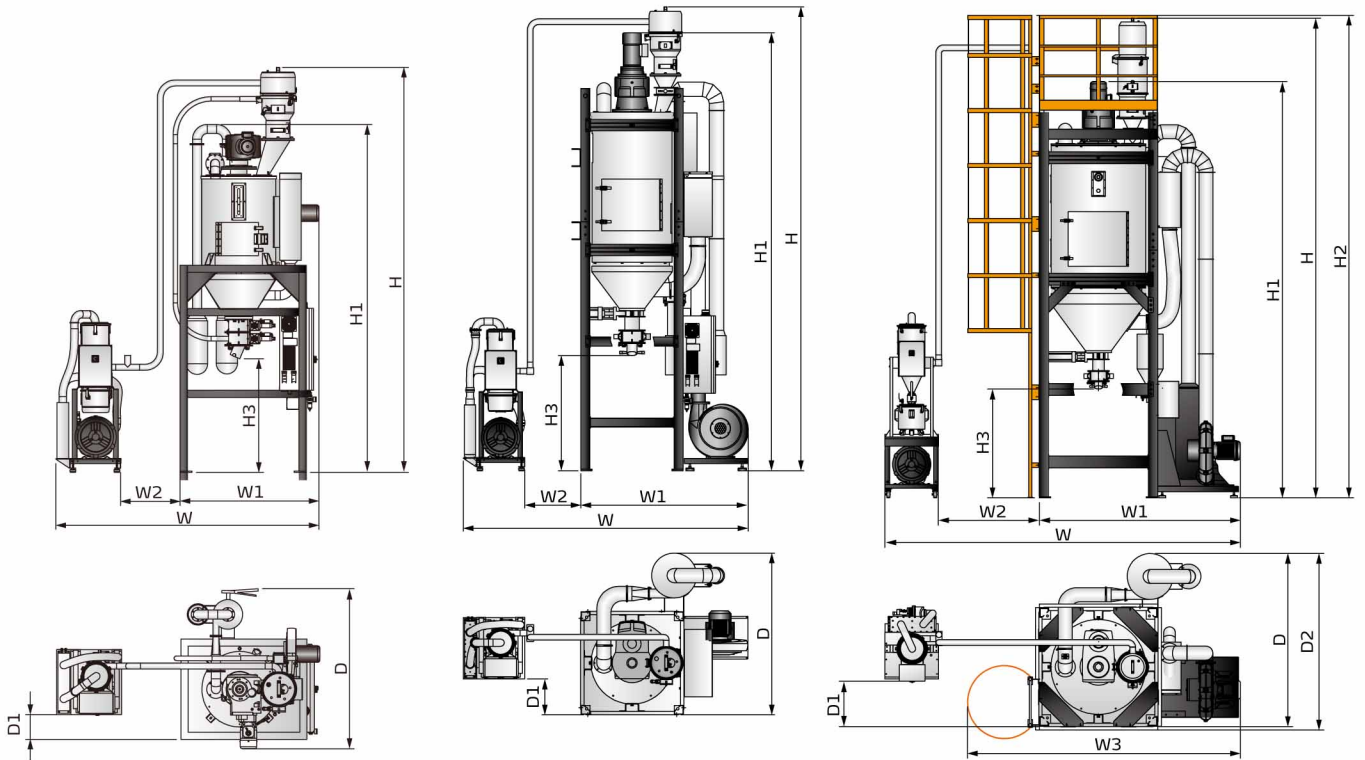


Outline Drawings



SICR Series

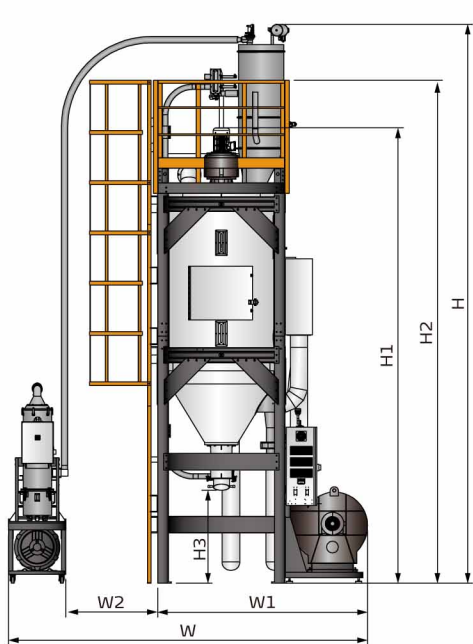
Outline Drawings



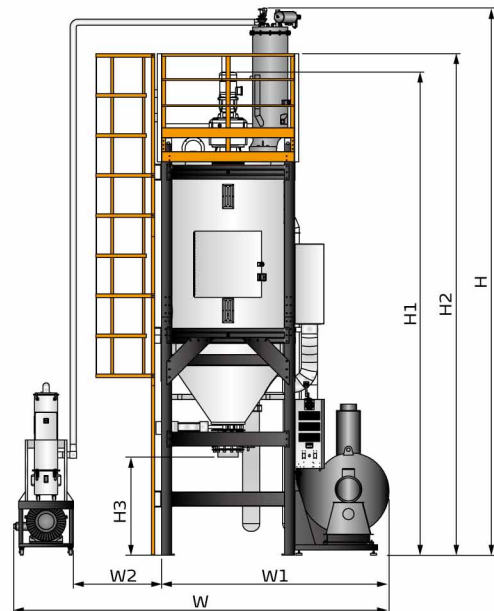
SICR-160U

SICR-450U

SICR-900U(Maintenance ladder is optional)



SICR-1600U(Maintenance ladder is optional)



SICR-2500U(Maintenance ladder is optional)



Specifications

Model	SICR-160U	SICR-450U	SICR-900U	SICR-1600U	SICR-2500U	
Heater Power(kW)	12	24	48	96	128	
Blower Power (kW)	0.55	2.2	3.7	7.5	15	
Blending Motor Power (kW)	0.25	0.55	1.5	2.2	4	
Max. Throughput (kg/hr)	50	150	300	500	750	
Hopper Capacity (L)	160	450	900	1600	2500	
H (mm)	3410	4162	5229	6675	6830	
H1 (mm)	2930	3896	4538	5440	6028	
H2 (mm)	-	-	5260	6005	6260	
H3 (mm)	955	1025	1186	1111	1224	
W (mm)	2215	2534	3876	4343	4685	
W1 (mm)	1169	1488	2193	2505	2840	
W2 (mm)	500	500	1100	1100	1100	
W3 (mm)	-	-	2975	3320	3658	
D(mm)	1348	1439	1887	2145	2315	
D1(mm)	210	320	496	469	541	
D2(mm)	-	-	1923	2195	2361	
Weight (kg)	330	595	1010	2530	3030	
Vacuum Generator	SVG-5HP-C	SVG-5HP-C	SVG-10HP-C	SVG-20HP-D-C	SVG-20HP-D-C	
Cooling Water Flow(L/min)	25	25	40	60	60	
Cooler Inlet and Outlet Dia.(mm)	φ16	φ16	φ16	φ16	φ16	
Hopper Receiver	SHR-12U-S	SHR-12U-S	SHR-36U-S	SHR-P-60U	SHR-P-60U	
Hopper Receiver	Model	SHR-12U-S	SHR-12U-S	SHR-P-60U	SHR-P-60U	
	Dimensions (mm) (H × W × D)	610×334×405	610×334×405	1094×395×469	1495×700×644	1519×605×613
	Flange Mounting Hole(mm)A/n×B	φ254.6/4×φ9	φ254.6/4×φ9	φ330/4×φ9	φ570/6×φ9	φ475/6×φ7
	Flange Outer Diameter(mm)C	φ271	φ271	φ347	φ590	φ490
Vacuum Pipe Diameter(inch)	2	2	2.5	3	3	
Material Conveying Pipe Diameter(inch)	1.5	1.5	2	2.5	2.5	
Applicable Material	Granules	Granules	Granules	Granules/Regrand	Granules/Regrand	

Notes:

- 1) Above maximum processing, capacity is obtained based on non-crystalline PET material (amorphous PET) of 0.85 kg/L in bulk density and 3~5mm in diameter under the temperature of 160°C;
- 2) The above parameters apply to models using recycled amorphous PET materials, and the length of recycled PET perform shall not exceed 10mm;
- 3) Cooling water pressure: 0.3~0.5MPa, cooling water temperature: ≤30°C;
- 4) Power: 3φ, 400VAC, 50Hz

Shini Group

Addr: No. 23, Minhe St., Shulin Dist.,
New Taipei, Taiwan

Tel: +886 2 2680 9119

Fax: +886 2 2680 9229

Email: shini@shini.com

Factories:

- Taiwan
- Dongguan
- Pinghu
- Ningbo
- Chongqing
- Pune

2024-01-15-04 Copyrights Reserved.

www.shini.com